

Lower tariff providers

Cycle years: 2011 - 2016

Cycle Reference Point: End of Cycle

Applicant coverage: UK domiciled

Reporting groups: Sex, POLAR3, ethnic group

Applicant statistics: June deadline applicants, placed June deadline applicants, all placed applicants, June deadline applicants per 10,000 population, placed June deadline applicants per 10,000 population, all placed applicants per 10,000 population

Application statistics: June deadline applications, offers, offer rate, average offer rate, percentage point difference between offer rate and average offer rate, contribution of group to the average offer rate

Non-disclosure controls: To avoid the disclosure of information about any individual the following measures are taken

- Applicants, placed applicants, applications and offers are rounded to the nearest 5.
- Applicants/placed applicants per 10,000 population figures are reported as 0 if the applicant/placed applicant figures are rounded to 0.
- All statistics related to the offer rate are not reported when the number of applications for a group is less than 10. The percentage point difference between the offer rate and the average offer rate is not reported when the number of applications for a group is less than 50.
- Offer rates are reported as 0% if there are fewer than 5 offers, and 100% if the number of offers is within 5 of the number of applications. When the offer rate is reported as 0% or 100%, it is reported in italics.

Contents:

18 year old applicants:	P.1
18 year old applications:	P.2
18 year old applicants by sex:	P.3
18 year old applications by sex:	P.4
18 year old applicants by POLAR3 quintile:	P.7
18 year old applications by POLAR3 quintile:	P.8
18 year old applicants by ethnic group:	P.11
18 year old applications by ethnic group:	P.12
Applicants (all ages):	P.15
Applications (all ages):	P.16
Applicants (all ages) by sex:	P.17
Applications (all ages) by sex:	P.18
Applicants (all ages) by POLAR3 quintile:	P.19
Applications (all ages) by POLAR3 quintile:	P.20
Applicants (all ages) by ethnic group:	P.21
Applications (all ages) by ethnic group:	P.22

P.1 18 year old applicants

Statistic	2011	2012	2013	2014	2015	2016
June deadline applicants	159,375	151,175	150,550	158,160	163,455	162,160
Placed June deadline applicants	67,475	61,345	63,600	65,235	67,655	66,080
All placed applicants	85,150	75,505	77,675	80,015	82,595	80,405
June deadline applicants per 10,000 population	2,069.5	1,954.4	1,978.4	2,100.0	2,133.5	2,163.4
Placed June deadline applicants per 10,000	876.2	793.1	835.8	866.2	883.1	881.6
All placed applicants per 10,000 population	1,105.7	976.2	1,020.7	1,062.4	1,078.1	1,072.7

P.2 18 year old applications

Statistic	2011	2012	2013	2014	2015	2016
June deadline applications	422,740	400,500	393,460	404,080	410,265	397,150
Offers	300,430	292,215	306,360	317,740	326,425	317,910
Offer rate	71.1%	73.0%	77.9%	78.6%	79.6%	80.0%

P.3 18 year old applicants by sex

Statistic	Sex	2011	2012	2013	2014	2015	2016
June deadline applicants	Men	66,965	62,095	62,260	65,865	66,995	66,970
	Women	92,405	89,080	88,290	92,295	96,460	95,190
Placed June deadline applicants	Men	28,870	25,445	27,000	27,830	28,560	27,950
	Women	38,605	35,900	36,605	37,410	39,100	38,130
All placed applicants	Men	36,650	31,530	32,845	34,055	34,725	33,750
	Women	48,500	43,975	44,830	45,960	47,870	46,655
June deadline applicants per 10,000 population	Men	1,701.8	1,565.7	1,594.7	1,701.4	1,707.2	1,743.3
	Women	2,453.8	2,363.4	2,382.5	2,521.4	2,581.2	2,605.1
Placed June deadline applicants per 10,000 population	Men	733.6	641.6	691.5	718.9	727.7	727.5
	Women	1,025.1	952.4	987.8	1,021.9	1,046.2	1,043.5
All placed applicants per 10,000 population	Men	931.3	795.1	841.3	879.7	884.9	878.5
	Women	1,287.8	1,166.6	1,209.8	1,255.6	1,280.9	1,276.8

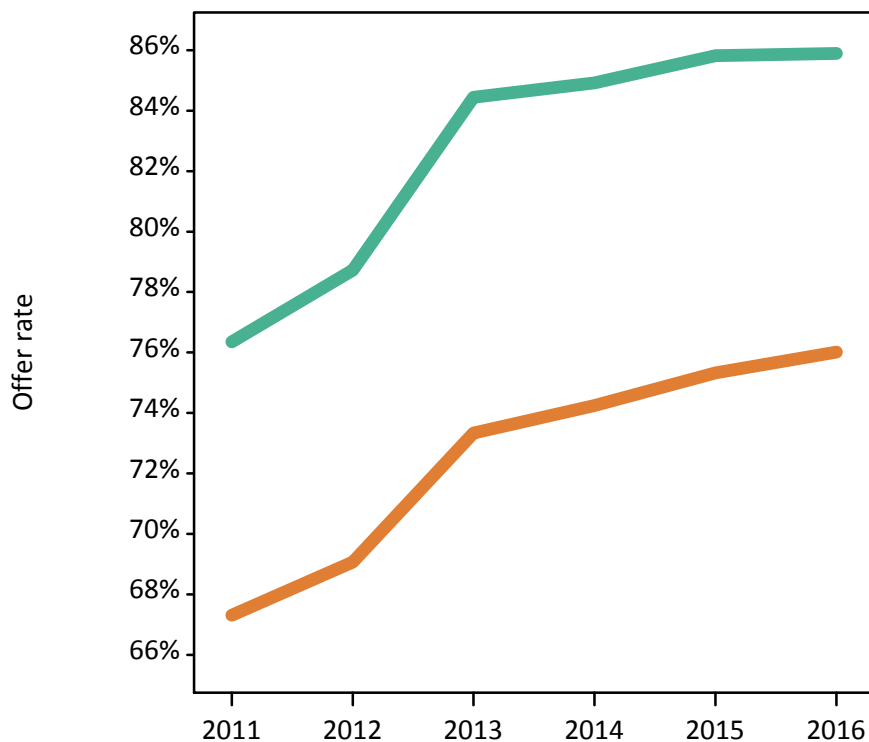
P.4 18 year old applications by sex

Statistic	Sex	2011	2012	2013	2014	2015	2016
June deadline applications	Men	175,565	161,700	160,540	166,160	165,725	162,005
	Women	247,175	238,800	232,920	237,915	244,545	235,145
Offers	Men	134,050	127,295	135,555	141,110	142,215	139,155
	Women	166,375	164,925	170,810	176,630	184,210	178,750
Offer rate	Men	76.4%	78.7%	84.4%	84.9%	85.8%	85.9%
	Women	67.3%	69.1%	73.3%	74.2%	75.3%	76.0%
Average offer rate	Men	76.7%	79.0%	84.5%	85.1%	86.0%	86.1%
	Women	67.1%	68.9%	73.3%	74.1%	75.2%	75.9%
Percentage point difference between offer rate and average offer rate	Men	-0.3	-0.3	-0.1	-0.2	-0.2	-0.2
	Women	0.2	0.2	0.1	0.1	0.1	0.1
Contribution of group to the average offer rate	Men	0.614	0.609	0.622	0.628	0.623	0.623
	Women	0.726	0.735	0.739	0.740	0.744	0.740

P.5 18 year old offer rate by sex

Note: The line for a group is not plotted when that group made fewer than 10 applications in any of the years from 2011-2016.

Men
Women



P.6 Percentage point difference between 18 year old offer rate and average offer rate by sex

Note: The line for a group is not plotted when that group made fewer than 50 applications in any of the years from 2011-2016.

Men
Women



P.7 18 year old applicants by POLAR3 quintile

Statistic	POLAR3 quintile	2011	2012	2013	2014	2015	2016
June deadline applicants	Quintile 1	21,010	20,235	20,515	22,745	23,550	23,340
	Quintile 2	28,510	27,210	27,595	29,545	30,645	30,555
	Quintile 3	33,645	32,375	32,335	34,095	35,290	34,850
	Quintile 4	37,230	34,800	34,620	35,650	36,870	36,225
	Quintile 5	38,685	36,300	35,235	35,840	36,720	36,510
Placed June deadline applicants	Quintile 1	9,565	9,085	9,620	10,295	10,575	10,310
	Quintile 2	12,605	11,910	12,485	13,025	13,395	13,200
	Quintile 3	14,630	13,510	14,075	14,445	15,140	14,585
	Quintile 4	15,460	13,635	14,170	14,305	14,795	14,360
	Quintile 5	15,110	13,105	13,145	13,040	13,600	13,345
All placed applicants	Quintile 1	11,505	10,870	11,490	12,310	12,615	12,285
	Quintile 2	15,520	14,435	15,015	15,790	16,165	15,875
	Quintile 3	18,665	16,840	17,295	17,760	18,705	17,945
	Quintile 4	19,625	16,830	17,370	17,630	18,025	17,440
	Quintile 5	19,695	16,395	16,355	16,370	16,870	16,500
June deadline applicants per 10,000 population	Quintile 1	1,461.6	1,420.3	1,471.9	1,634.4	1,680.7	1,728.7
	Quintile 2	1,896.5	1,814.7	1,872.9	2,019.3	2,063.3	2,112.9
	Quintile 3	2,186.4	2,096.5	2,120.2	2,265.4	2,298.1	2,318.2
	Quintile 4	2,376.9	2,192.9	2,213.5	2,313.2	2,355.2	2,346.3
	Quintile 5	2,337.1	2,160.8	2,131.0	2,197.6	2,193.4	2,209.7
Placed June deadline applicants per 10,000 population	Quintile 1	665.4	637.6	690.4	739.9	754.9	763.7
	Quintile 2	838.4	794.4	847.2	890.2	901.7	913.0
	Quintile 3	950.7	874.8	923.0	959.9	985.8	970.3
	Quintile 4	987.1	859.2	906.1	928.3	945.2	930.0
	Quintile 5	912.9	780.2	795.0	799.6	812.3	807.7
All placed applicants per 10,000 population	Quintile 1	800.3	763.0	824.4	884.7	900.5	909.9
	Quintile 2	1,032.3	962.7	1,019.1	1,079.3	1,088.3	1,098.0
	Quintile 3	1,212.9	1,090.5	1,134.1	1,180.0	1,218.3	1,193.6
	Quintile 4	1,252.8	1,060.7	1,110.6	1,143.9	1,151.5	1,129.5
	Quintile 5	1,189.9	975.9	989.2	1,003.8	1,007.8	998.7

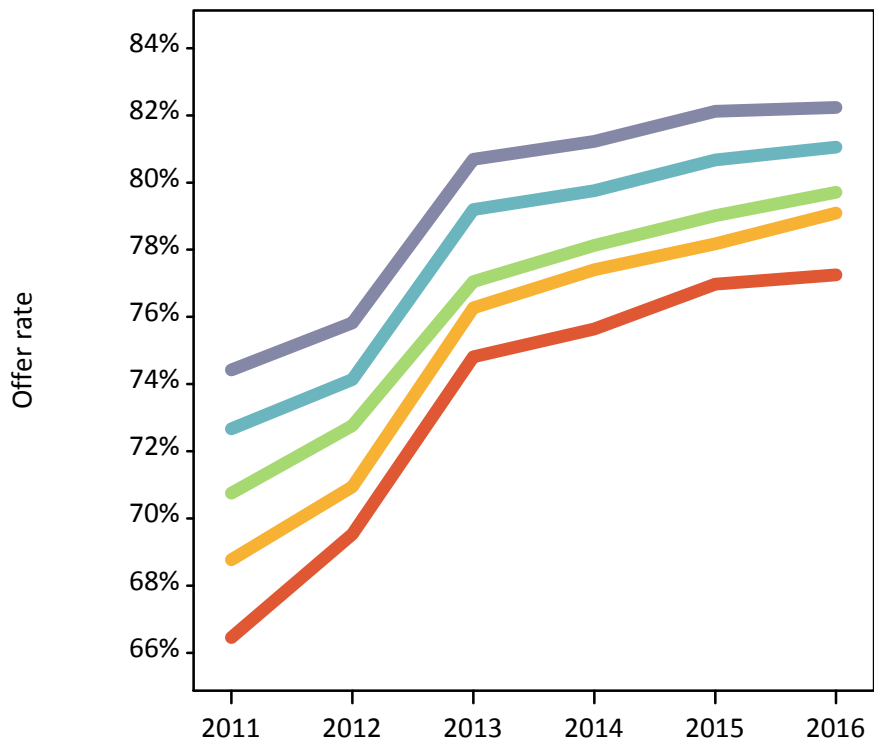
P.8 18 year old applications by POLAR3 quintile

Statistic	POLAR3 quintile	2011	2012	2013	2014	2015	2016
June deadline applications	Quintile 1	58,100	55,975	55,455	60,445	61,330	59,590
	Quintile 2	78,220	74,730	74,725	77,820	79,610	77,450
	Quintile 3	91,885	88,530	87,385	89,635	91,160	87,805
	Quintile 4	97,790	90,650	89,455	89,850	91,195	87,175
	Quintile 5	95,980	89,950	85,765	85,590	86,015	83,425
Offers	Quintile 1	38,605	38,920	41,490	45,725	47,210	46,030
	Quintile 2	53,790	53,015	56,990	60,235	62,235	61,260
	Quintile 3	65,015	64,420	67,330	70,025	72,035	69,990
	Quintile 4	71,065	67,200	70,840	71,660	73,570	70,660
	Quintile 5	71,430	68,200	69,205	69,520	70,640	68,610
Offer rate	Quintile 1	66.4%	69.5%	74.8%	75.6%	77.0%	77.2%
	Quintile 2	68.8%	70.9%	76.3%	77.4%	78.2%	79.1%
	Quintile 3	70.8%	72.8%	77.0%	78.1%	79.0%	79.7%
	Quintile 4	72.7%	74.1%	79.2%	79.8%	80.7%	81.1%
	Quintile 5	74.4%	75.8%	80.7%	81.2%	82.1%	82.2%
Average offer rate	Quintile 1	67.7%	70.3%	75.8%	77.0%	78.0%	78.4%
	Quintile 2	69.3%	71.3%	76.5%	77.6%	78.6%	79.3%
	Quintile 3	71.0%	73.0%	77.3%	78.3%	79.2%	79.9%
	Quintile 4	72.3%	73.8%	78.6%	79.3%	80.2%	80.6%
	Quintile 5	73.4%	75.1%	80.2%	80.4%	81.2%	81.6%
Percentage point difference between offer rate and average offer rate	Quintile 1	-1.3	-0.8	-1.0	-1.3	-1.1	-1.1
	Quintile 2	-0.6	-0.4	-0.3	-0.2	-0.4	-0.2
	Quintile 3	-0.2	-0.3	-0.3	-0.2	-0.2	-0.2
	Quintile 4	0.4	0.3	0.6	0.4	0.4	0.5
	Quintile 5	1.0	0.7	0.5	0.8	0.9	0.7
Contribution of group to the average offer rate	Quintile 1	0.245	0.248	0.251	0.254	0.252	0.255
	Quintile 2	0.275	0.279	0.283	0.282	0.282	0.286
	Quintile 3	0.300	0.304	0.304	0.301	0.302	0.302
	Quintile 4	0.314	0.312	0.314	0.307	0.306	0.305
	Quintile 5	0.327	0.326	0.323	0.318	0.315	0.315

P.9 18 year old offer rate by POLAR3 quintile

Note: The line for a group is not plotted when that group made fewer than 10 applications in any of the years from 2011-2016.

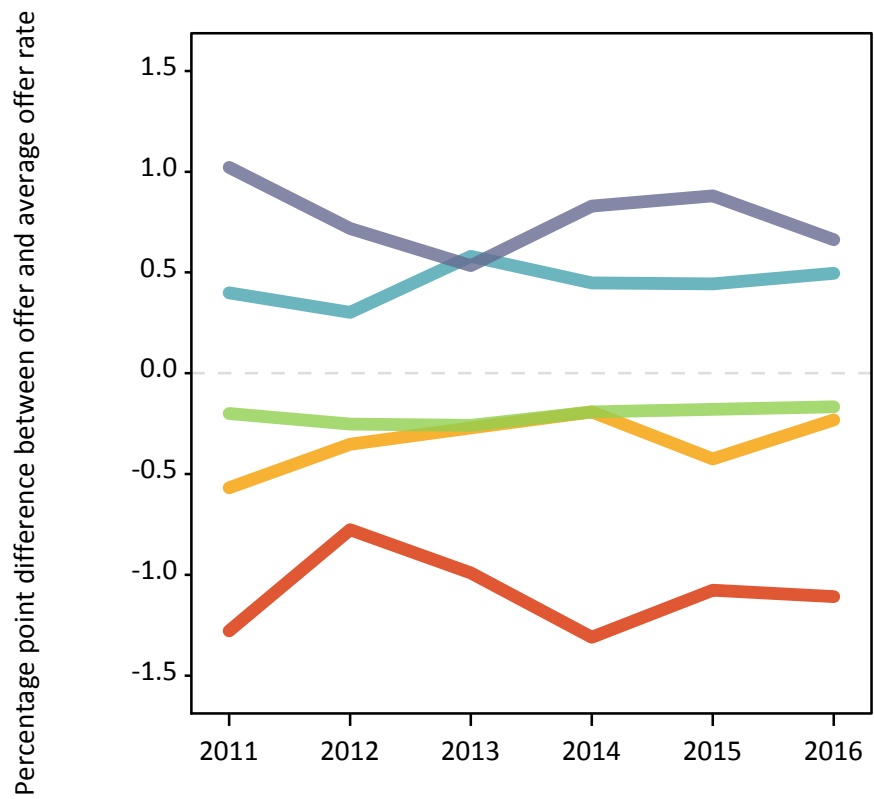
- Quintile 1
- Quintile 2
- Quintile 3
- Quintile 4
- Quintile 5



P.10 Percentage point difference between 18 year old offer rate and average offer rate by POLAR3 quintile

Note: The line for a group is not plotted when that group made fewer than 50 applications in any of the years from 2011-2016.

- Quintile 1
- Quintile 2
- Quintile 3
- Quintile 4
- Quintile 5



P.11 18 year old applicants by ethnic group

Statistic	Ethnic group	2011	2012	2013	2014	2015	2016
June deadline applicants	Asian	16,265	16,220	16,525	17,640	18,815	19,665
	Black	7,845	7,910	8,770	9,075	9,940	9,790
	Mixed	5,140	4,935	5,090	5,610	6,230	6,325
	White	128,020	119,845	117,865	123,245	125,485	123,200
	Other	1,500	1,755	1,820	2,085	2,295	2,390
Placed June deadline applicants	Asian	6,780	6,440	7,080	7,375	7,860	8,015
	Black	3,240	3,220	3,685	3,645	4,035	3,995
	Mixed	2,150	1,970	2,070	2,290	2,570	2,585
	White	54,440	48,825	49,840	50,890	51,950	50,235
	Other	640	690	745	865	960	930
All placed applicants	Asian	10,495	9,540	9,985	10,580	11,125	11,280
	Black	5,280	4,875	5,440	5,390	5,995	5,760
	Mixed	2,905	2,480	2,620	2,900	3,245	3,205
	White	65,050	57,185	58,150	59,500	60,375	58,290
	Other	1,000	1,045	1,080	1,240	1,380	1,325
June deadline applicants per 10,000 population	Asian	2,580.8	2,504.3	2,505.4	2,600.8	2,658.1	2,732.5
	Black	2,869.8	2,809.2	2,953.9	2,994.2	3,122.4	3,128.3
	Mixed	2,123.0	1,895.1	1,881.8	1,949.7	2,020.8	2,009.9
	White	1,977.3	1,856.1	1,873.2	1,997.7	2,014.0	2,036.7
	Other	1,849.4	1,982.2	2,009.3	2,240.1	2,378.9	2,405.3
Placed June deadline applicants per 10,000 population	Asian	1,075.5	994.7	1,073.2	1,087.2	1,110.7	1,113.9
	Black	1,185.1	1,143.4	1,240.5	1,202.8	1,267.6	1,277.0
	Mixed	887.3	756.3	764.9	795.6	833.1	821.7
	White	840.9	756.2	792.1	824.8	833.8	830.4
	Other	790.1	777.5	823.8	927.2	993.9	935.7
All placed applicants per 10,000 population	Asian	1,665.4	1,472.8	1,514.2	1,560.1	1,571.9	1,567.7
	Black	1,931.6	1,730.8	1,831.6	1,778.2	1,884.0	1,841.1
	Mixed	1,198.6	951.8	968.6	1,007.3	1,051.7	1,018.1
	White	1,004.7	885.6	924.2	964.4	969.0	963.6
	Other	1,237.1	1,183.2	1,188.8	1,332.2	1,430.7	1,335.6

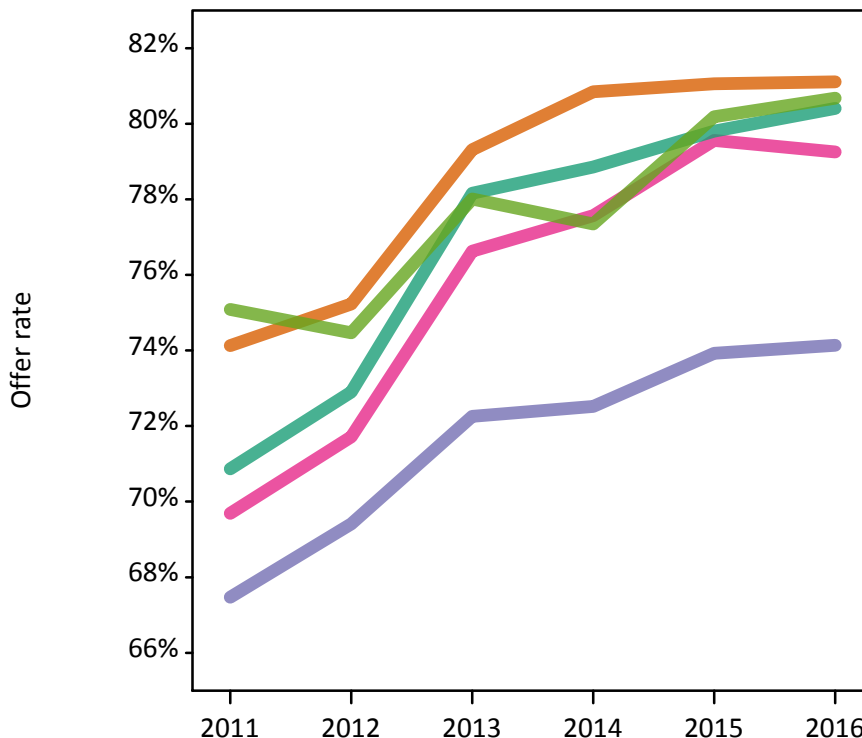
P.12 18 year old applications by ethnic group

Statistic	Ethnic group	2011	2012	2013	2014	2015	2016
June deadline applications	Asian	48,080	48,610	48,975	50,620	52,850	53,885
	Black	23,405	23,915	25,920	26,050	27,710	26,690
	Mixed	14,020	13,245	13,475	14,525	15,750	15,890
	White	331,340	308,350	298,445	305,670	305,955	292,435
	Other	4,360	5,085	5,340	5,960	6,240	6,290
Offers	Asian	35,640	36,570	38,845	40,925	42,845	43,710
	Black	15,790	16,600	18,730	18,895	20,485	19,785
	Mixed	9,770	9,500	10,325	11,270	12,530	12,595
	White	234,825	224,785	233,270	241,030	244,170	235,140
	Other	3,275	3,785	4,165	4,610	5,005	5,075
Offer rate	Asian	74.1%	75.2%	79.3%	80.9%	81.1%	81.1%
	Black	67.5%	69.4%	72.3%	72.5%	73.9%	74.1%
	Mixed	69.7%	71.7%	76.6%	77.6%	79.6%	79.3%
	White	70.9%	72.9%	78.2%	78.9%	79.8%	80.4%
	Other	75.1%	74.5%	78.0%	77.3%	80.2%	80.7%
Average offer rate	Asian	75.4%	76.4%	80.4%	81.6%	81.8%	81.9%
	Black	70.6%	73.0%	75.2%	75.7%	76.6%	77.0%
	Mixed	70.9%	73.0%	77.5%	78.1%	80.0%	80.2%
	White	70.4%	72.3%	77.7%	78.4%	79.4%	79.9%
	Other	76.6%	77.0%	79.5%	80.1%	81.5%	81.9%
Percentage point difference between offer rate and average offer rate	Asian	-1.3	-1.1	-1.1	-0.7	-0.8	-0.7
	Black	-3.1	-3.6	-3.0	-3.2	-2.7	-2.8
	Mixed	-1.2	-1.3	-0.9	-0.5	-0.4	-0.9
	White	0.5	0.6	0.5	0.5	0.4	0.5
	Other	-1.5	-2.5	-1.5	-2.7	-1.3	-1.2
Contribution of group to the average offer rate	Asian	0.353	0.359	0.353	0.346	0.344	0.350
	Black	0.216	0.217	0.223	0.212	0.212	0.215
	Mixed	0.137	0.135	0.136	0.137	0.139	0.138
	White	0.854	0.845	0.837	0.832	0.824	0.818
	Other	0.128	0.141	0.132	0.139	0.136	0.132

P.13 18 year old offer rate by ethnic group

Note: The line for a group is not plotted when that group made fewer than 10 applications in any of the years from 2011-2016.

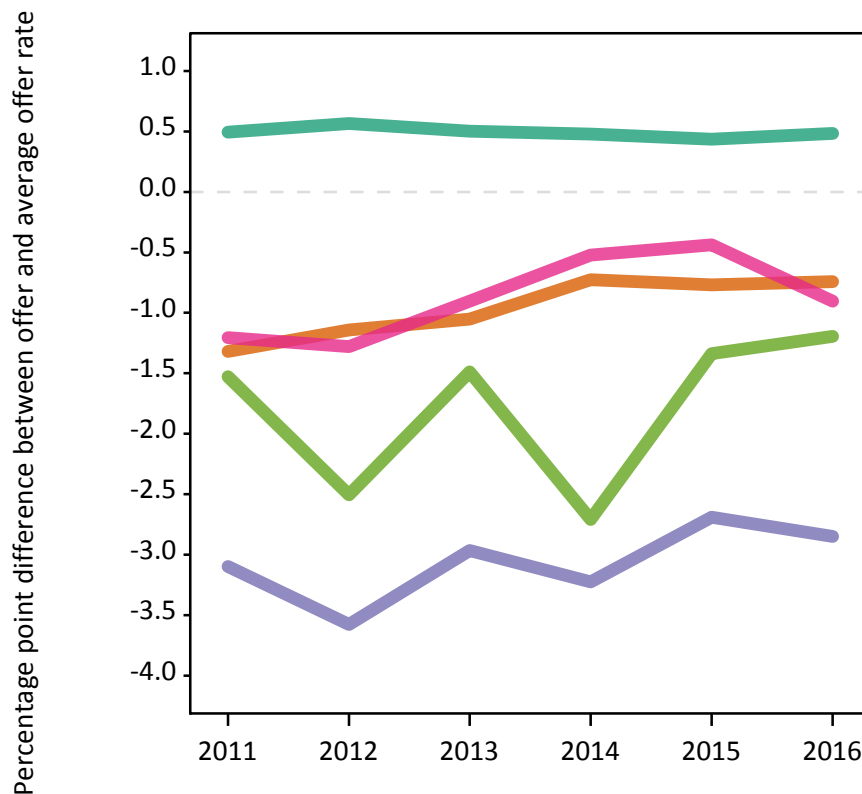
- Asian
- Black
- Mixed
- White
- Other



P.14 Percentage point difference between 18 year old offer rate and average offer rate by ethnic group

Note: The line for a group is not plotted when that group made fewer than 50 applications in any of the years from 2011-2016.

- Asian
- Black
- Mixed
- White
- Other



P.15 Applicants (all ages)

Statistic	2011	2012	2013	2014	2015	2016
June deadline applicants	368,825	333,730	338,570	356,815	356,580	352,315
Placed June deadline applicants	158,275	140,105	149,470	153,730	154,530	151,265
All placed applicants	202,750	183,600	196,535	204,645	205,805	199,415

P.16 Applications (all ages)

Statistic	2011	2012	2013	2014	2015	2016
June deadline applications	968,485	878,085	875,255	903,385	888,485	863,005
Offers	563,780	531,020	569,705	593,835	600,635	582,315
Offer rate	58.2%	60.5%	65.1%	65.7%	67.6%	67.5%

P.17 Applicants (all ages) by sex

Statistic	Sex	2011	2012	2013	2014	2015	2016
June deadline applicants	Men	152,590	135,010	137,225	144,505	143,860	141,495
	Women	216,235	198,720	201,345	212,310	212,715	210,815
Placed June deadline applicants	Men	68,125	58,885	63,745	64,985	64,665	62,700
	Women	90,150	81,220	85,730	88,740	89,865	88,565
All placed applicants	Men	88,650	78,915	85,085	87,805	87,125	83,490
	Women	114,105	104,685	111,450	116,845	118,680	115,930

P.18 Applications (all ages) by sex

Statistic	Sex	2011	2012	2013	2014	2015	2016
June deadline applications	Men	402,855	355,720	354,320	364,220	355,880	343,630
	Women	565,630	522,370	520,935	539,165	532,605	519,375
Offers	Men	258,720	239,830	259,165	268,935	267,995	257,635
	Women	305,060	291,190	310,540	324,895	332,640	324,675
Offer rate	Men	64.2%	67.4%	73.1%	73.8%	75.3%	75.0%
	Women	53.9%	55.7%	59.6%	60.3%	62.5%	62.5%

P.19 Applicants (all ages) by POLAR3 quintile

Statistic	POLAR3 quintile	2011	2012	2013	2014	2015	2016
June deadline applicants	Quintile 1	54,605	50,985	52,190	56,975	56,610	56,100
	Quintile 2	67,920	62,335	63,725	68,405	68,455	67,360
	Quintile 3	80,950	73,615	74,550	78,420	78,280	77,370
	Quintile 4	81,860	73,180	74,375	77,250	77,125	75,690
	Quintile 5	82,515	72,760	73,005	74,985	75,055	73,840
Placed June deadline applicants	Quintile 1	24,385	22,715	24,745	26,210	26,015	25,680
	Quintile 2	30,250	27,595	29,510	30,980	30,900	30,065
	Quintile 3	34,975	31,270	33,150	34,100	34,545	33,630
	Quintile 4	34,730	29,910	32,155	32,490	32,600	31,760
	Quintile 5	33,575	28,295	29,625	29,645	30,035	29,300
All placed applicants	Quintile 1	29,960	28,810	31,470	33,555	33,455	32,880
	Quintile 2	37,800	35,615	38,120	40,440	40,425	39,120
	Quintile 3	45,675	41,845	44,590	46,630	47,340	45,420
	Quintile 4	44,760	39,300	42,295	43,540	43,505	41,865
	Quintile 5	44,045	37,415	39,475	39,975	40,275	38,860

P.20 Applications (all ages) by POLAR3 quintile

Statistic	POLAR3 quintile	2011	2012	2013	2014	2015	2016
June deadline applications	Quintile 1	143,555	134,875	134,875	144,760	142,315	138,910
	Quintile 2	181,510	167,220	168,210	176,095	174,060	168,580
	Quintile 3	219,950	200,930	200,095	205,710	202,175	195,885
	Quintile 4	214,305	190,800	191,435	194,185	190,085	183,395
	Quintile 5	206,680	182,060	178,790	180,675	177,290	171,460
Offers	Quintile 1	77,615	76,695	83,460	91,235	92,135	89,720
	Quintile 2	102,430	98,275	106,840	113,905	115,555	112,085
	Quintile 3	124,840	119,185	127,245	132,250	133,715	129,440
	Quintile 4	128,735	118,215	128,065	130,280	131,555	126,330
	Quintile 5	128,900	117,500	122,995	124,945	126,125	121,865
Offer rate	Quintile 1	54.1%	56.9%	61.9%	63.0%	64.7%	64.6%
	Quintile 2	56.4%	58.8%	63.5%	64.7%	66.4%	66.5%
	Quintile 3	56.8%	59.3%	63.6%	64.3%	66.1%	66.1%
	Quintile 4	60.1%	62.0%	66.9%	67.1%	69.2%	68.9%
	Quintile 5	62.4%	64.5%	68.8%	69.2%	71.1%	71.1%

P.21 Applicants (all ages) by ethnic group

Statistic	Ethnic group	2011	2012	2013	2014	2015	2016
June deadline applicants	Asian	39,655	37,600	38,035	40,095	41,700	42,475
	Black	38,270	36,340	35,800	37,285	37,900	38,505
	Mixed	13,485	12,275	12,620	14,015	14,645	14,890
	White	270,440	240,135	244,740	257,435	253,530	247,215
	Other	4,520	5,365	5,310	5,950	6,195	6,435
Placed June deadline applicants	Asian	16,525	15,240	16,545	16,925	17,505	17,535
	Black	13,775	13,115	13,735	14,070	14,395	15,095
	Mixed	5,775	5,140	5,495	6,040	6,365	6,430
	White	119,415	103,705	110,715	113,515	112,645	108,450
	Other	1,820	2,120	2,135	2,395	2,560	2,605
All placed applicants	Asian	25,350	23,515	24,760	25,920	26,760	26,525
	Black	21,800	21,780	22,535	24,985	25,180	24,530
	Mixed	7,700	6,950	7,530	8,395	8,755	8,630
	White	142,380	125,470	134,925	138,210	137,300	132,050
	Other	2,825	3,430	3,555	4,025	4,300	4,270

P.22 Applications (all ages) by ethnic group

Statistic	Ethnic group	2011	2012	2013	2014	2015	2016
June deadline applications	Asian	118,285	113,335	112,650	115,000	116,480	116,175
	Black	117,520	112,890	109,825	112,450	111,825	112,395
	Mixed	36,950	33,415	33,800	36,385	37,315	37,500
	White	676,255	597,520	598,255	617,765	599,570	572,730
	Other	13,060	15,720	15,380	16,740	16,855	17,320
Offers	Asian	73,400	72,915	77,705	80,275	82,480	82,165
	Black	45,795	46,785	49,450	51,150	52,985	52,690
	Mixed	20,850	19,655	21,345	23,470	25,005	25,090
	White	412,690	379,330	408,175	425,175	425,120	406,835
	Other	7,640	9,480	9,905	10,890	11,215	11,340
Offer rate	Asian	62.1%	64.3%	69.0%	69.8%	70.8%	70.7%
	Black	39.0%	41.4%	45.0%	45.5%	47.4%	46.9%
	Mixed	56.4%	58.8%	63.2%	64.5%	67.0%	66.9%
	White	61.0%	63.5%	68.2%	68.8%	70.9%	71.0%
	Other	58.5%	60.3%	64.4%	65.1%	66.5%	65.5%

Technical Notes and Definitions

UCAS undergraduate scheme

Adjustment

Adjustment allows applicants who have met and exceeded the terms of their conditional firm offer to seek and find a place at another provider whilst keeping their place at their original firm choice provider.

Clearing

Clearing is a route for applicants that are not placed and holding no offers to find a place on courses with vacancies.

Cycle year

The UCAS application cycle which runs from September to October the following year. For example the 2016 cycle runs from September 2015 through to October 2016.

End of cycle

The point in the cycle to which the numbers in this report refer, and the point at which the cycle is closed such that no more applications or offers can be made, and no more applicants can be placed. Numbers reported at the end of cycle exclude information on a small number of applicants who cancelled during the cycle.

Extra

Applicants who are unsuccessful in obtaining an offer or decline all offers may be eligible to apply through Extra, where they can apply to one further course at a time. Extra operates from 25 February until early July. It provides applicants who are eligible the possibility of obtaining an offer before exam results are published and Clearing starts.

June 30 deadline

The deadline for main scheme applications. Applicants who apply after this date will go directly into Clearing.

Record of Prior Acceptance (RPA)

RPA is an acceptance route used when a provider informs UCAS of applicants it has accepted outside of the normal application process (e.g. individuals who have applied directly to the provider).

Reporting groups

Ethnic group

High level grouping of ethnic origin as declared by the applicant: 'White', 'Black', 'Asian', 'Mixed', 'Other', 'Unknown'. Applicants who declare themselves as 'Unknown' ethnic origin are not reported in these tables, but are included in the associated csv data file.

POLAR3 quintile

Developed by HEFCE, POLAR3 classifies small areas across the UK into five groups according to their level of young participation in Higher Education. Each of these groups represents around 20 per cent of young people and is ranked from Quintile 1 (areas with the lowest young participation rates, considered as the most disadvantaged) to Quintile 5 (highest young participation rates, considered most advantaged). POLAR3 is based on the participation rates of young people between 2005 and 2009 who entered Higher Education between 2005-06 and 2010-11, therefore is most suitable for applicants aged 19 and under. These groups are assigned using the postcode declared by the applicant at the time of their application. If a UK postcode is invalid, considered unsafe for measurement or there is no link to Census geography possible then the applicant is not assigned to a quintile. Applicants with no POLAR3 quintile are not reported.

Sex

Sex as declared by the applicant.

SIMD quintile

Scottish index of multiple deprivation (SIMD) for 2012 identifies small area concentrations of multiple deprivation across all of Scotland, providing a relative measure of deprivation amongst 6505 small areas (data zones) based on 7 socio-economic domains. These small areas are classified into five groups ranked from Quintile 1 (considered the most deprived) to Quintile 5 (considered least deprived), with equal populations in each quintile. Quintiles are assigned using the postcode declared by the applicant, applicants declaring invalid postcodes are classified as 'Not assigned' and are not reported.

SIMD is only defined for applicants domiciled in Scotland, therefore any applicants domiciled outside of Scotland cannot be assigned to an SIMD quintile and so are not reported for this measure.

SIMD is only reported for providers in Scotland. Application and entry rates by SIMD are reported in the 2016 End of Cycle Report and the 2016 cycle January deadline application rate report.

Statistics reported in the tables

All placed applicants

The number of applicants placed for entry into higher education at the provider through one of their choices, including any choices made through Extra, or via Adjustment, Clearing or RPA.

All placed applicants per 10,000 population

The number of total UK domiciled 18 year old placed applicants for entry into higher education at the provider divided by the number of UK 18 year olds in the population, multiplied by 10,000. This gives the number of 18 year olds, for every 10,000 in the population, that were placed at the provider through one of their choices, including any choices made through Extra, or via Adjustment, Clearing or RPA. It is an alternative way of expressing the entry rate to a provider. By referencing the underlying population this statistic shows how the number of placed applicants is changing in relation to the available pool of potential applicants and so gives the chance that somebody from the group will be placed at a provider.

This statistic is only reported for 18 year olds.

Average offer rate

The offer rate that you might expect if the predicted grades and subject choice of applicants were the only factors that influenced whether an applicant was made an offer by the provider. The average offer rate is calculated by dividing applicants according to their specific combination of grades (for A levels the best three predicted grades are used, for BTECs, International Baccalaureate and Scottish Highers and Advanced Highers, predicted grades along with any grades already achieved upon applying are used) and subject choice. For each combination the number of main scheme offers is divided by the number of main scheme applications, to give an overall offer rate. This is then multiplied by the number of applications made by the group for which the average offer rate is being calculated (for example POLAR3 quintile 1), to give an average number of offers for that group. These average number of offers are then added together across all combinations of predicted grade and subject and divided by the number of main scheme applications from the group to give the average offer rate.

The average offer rate does not attempt to control for any other factors that may play a part in the decision to make an offer, such as the subject of the qualifications studied, their relevance to a course, or the grade in each subject; higher numbers of A levels being studied; the exact profile of grades predicted; personal statements; teacher references; interviews; or any other criteria (such as work experience or portfolios) that may be part of the admissions decision.

This statistic is only reported for 18 year olds.

Contribution of group to the average offer rate

The way in which the average offer rate is defined means that the pattern of application and offers of a group (for example POLAR3 quintile 1) will always contribute, in part, to the average offer rate for that group. When this contribution is large, the average offer rate will mainly reflect the patterns for the group, meaning that the value of the average offer rate will be similar to the offer rate, the percentage point difference statistic will be small, and any real difference between the offer rate and what might be expected given the predicted grades and subject choices of the applicants will be difficult to detect.

Values of the contribution of group to the average offer rate range between 0 and 1. The closer the value is to 1 the greater the contribution a group makes to its own average offer rate.

This statistic is only reported for 18 year olds.

Placed June deadline applicants

An applicant who has been placed for entry into higher education at the provider through a June deadline application.

Placed June deadline applicants per 10,000 population

The number of UK domiciled 18 year old placed June deadline applicants at the provider divided by the number of UK 18 year olds in the population, multiplied by 10,000. This gives the number of 18 year olds, for every 10,000 in the population, that were placed at the provider through one of their June deadline applications. It is an alternative way of expressing the entry rate to a provider, but for placed June deadline applicants only. By referencing the underlying population this statistic shows how the number of placed June deadline applicants is changing in relation to the available pool of potential 18 year old applicants and so gives the chance that somebody from the group will be placed at a provider through a June deadline application.

This statistic is only reported for 18 year olds.

June deadline applications

An application (or choice) to a course in higher education to the provider that is made by the June 30 deadline. Each applicant can make up to five choices this way. The number of June deadline applications does not include choices made through the following routes: Clearing, Extra, Adjustment and RPAs. Applications made to October deadline courses received after the October deadline are not included in these statistics.

June deadline applicants

The number of applicants that made at least one application to the provider by the June 30 deadline.

June deadline applicants per 10,000 population

The number of UK domiciled 18 year old June deadline applicants to the provider divided by the number of UK 18 year olds in the population, multiplied by 10,000. This gives the number of 18 year olds, for every 10,000 in the population, who applied by the June 30 deadline. It is equivalent to the application rate. By referencing the underlying population this statistic shows how the number of June deadline applicants is changing in relation to the available pool of potential 18 year old applicants and so gives the chance that somebody from the group will apply to a provider by the June 30 deadline.

This statistic is only reported for 18 year olds.

Offers

An offer is defined as a provider's decision in response to an application to offer a place to an applicant, often subject to the applicant satisfying academic and/or other criteria, via a June deadline application (i.e. does not cover choices made through the following routes: Clearing, Extra, Adjustment and RPAs).

Offer rate

The number of offers made divided by the number of June deadline applications. This gives the proportion of all June deadline applications to the provider that received an offer.

Percentage point difference between offer rate and average offer rate

The offer rate minus the average offer rate.

The percentage point difference can be compared to the expected range of statistical variation resulting from the calculation of the average offer rate using the Average Offer Rate Lookup Table. Where the value of the percentage point difference lies outside of this range, the percentage point difference may be considered to represent a real difference between the offer rate and the average offer rate.

Other definitions

Age

This analysis uses country-specific age definitions that align with the cut off points for school and college cohorts within the different administrations of the UK. For England and Wales, ages are defined on the 31 August, for Northern Ireland on the 1 July and for Scotland on the 28 February the following year. Defining ages in this way matches the assignment of children to school cohorts. For applicants outside of the UK a cohort cut off of 31 August has been used.

Provider

A higher education provider - a university or college.

UK domiciled

Declared area of permanent residence within England, Northern Ireland, Scotland and Wales. Applicants from the Channel Islands and Isle of Man are not included.