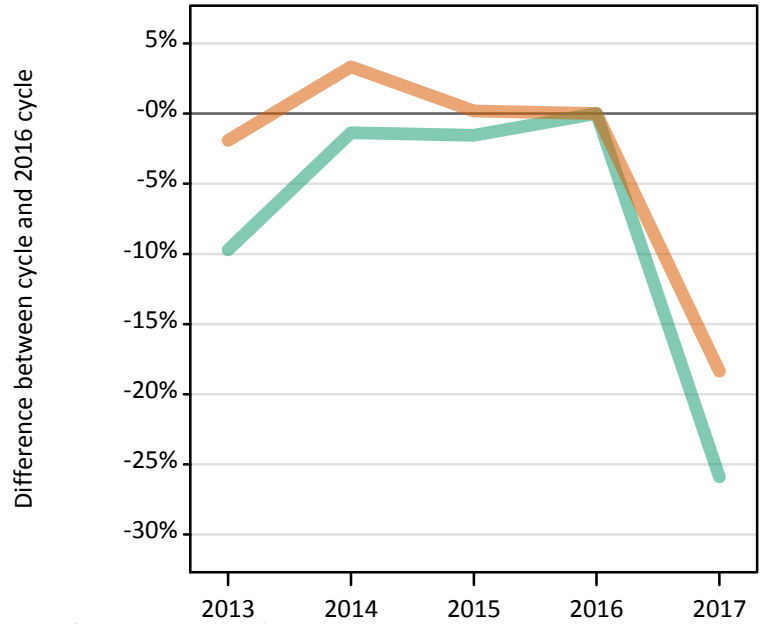


Nursing applicants by sex and age at the 24 March deadline

FB.2.1 Applicants by sex : All domiciles Difference between cycle and 2016 cycle

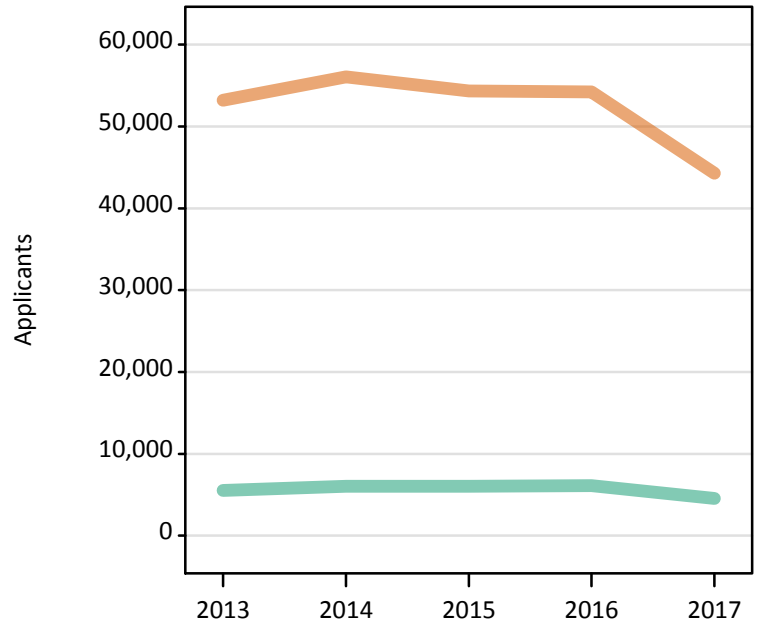
Men
Women



Note: The percentage change is not plotted in the above chart for groups with fewer than 500 applicants in any one cycle.

FB.2.2 Applicants by sex : All domiciles

Men
Women



FB.2.3 Applicants by age and sex : All domiciles

Age group and sex of applicant		2013	2014	2015	2016	2017
Under 18	Women					
	Men					
18	Women	11,710	11,850	12,280	12,020	11,000
	Men	530	560	560	560	500
19	Women	6,640	6,950	6,590	6,710	5,570
	Men	450	460	480	450	370
20-24	Women	14,530	15,500	14,530	13,670	10,890
	Men	1,270	1,410	1,320	1,250	910
25-29	Women	7,910	8,520	8,180	8,250	6,140
	Men	1,000	1,030	980	980	720
30-34	Women	5,100	5,300	4,960	5,180	4,040
	Men	760	790	760	800	510
35 and over	Women	7,190	7,770	7,680	8,290	6,530
	Men	1,510	1,790	1,910	2,080	1,510
All ages	Women	53,200	56,040	54,340	54,230	44,280
	Men	5,530	6,040	6,030	6,120	4,540

FB.2.4 Applicants by age and sex : All domiciles

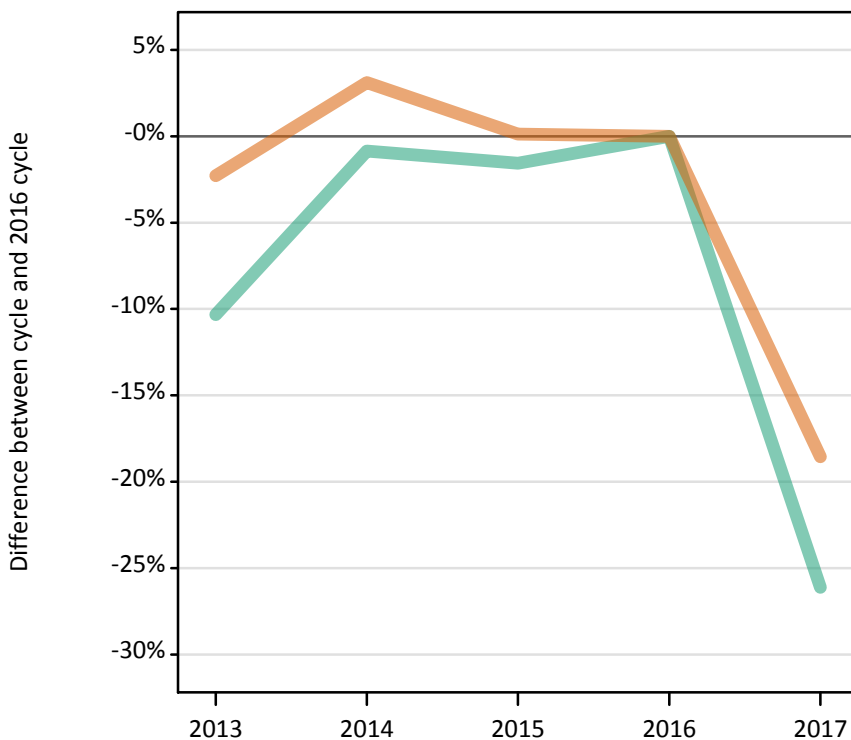
Difference between cycle and 2016 cycle

Age group and sex of applicant		2013	2014	2015	2016	2017
Under 18	Women					
	Men					
18	Women	-3%	-1%	2%	0%	-8%
	Men	-5%	1%	1%	0%	-11%
19	Women	-1%	4%	-2%	0%	-17%
	Men	-0%	2%	7%	0%	-17%
20-24	Women	6%	13%	6%	0%	-20%
	Men	2%	13%	6%	0%	-27%
25-29	Women	-4%	3%	-1%	0%	-26%
	Men	2%	5%	0%	0%	-26%
30-34	Women	-2%	2%	-4%	0%	-22%
	Men	-5%	-2%	-5%	0%	-36%
35 and over	Women	-13%	-6%	-7%	0%	-21%
	Men	-28%	-14%	-8%	0%	-27%
All ages	Women	-2%	3%	0%	0%	-18%
	Men	-10%	-1%	-2%	0%	-26%

FB.2.5 Applicants by sex : UK

Difference between cycle and 2016 cycle

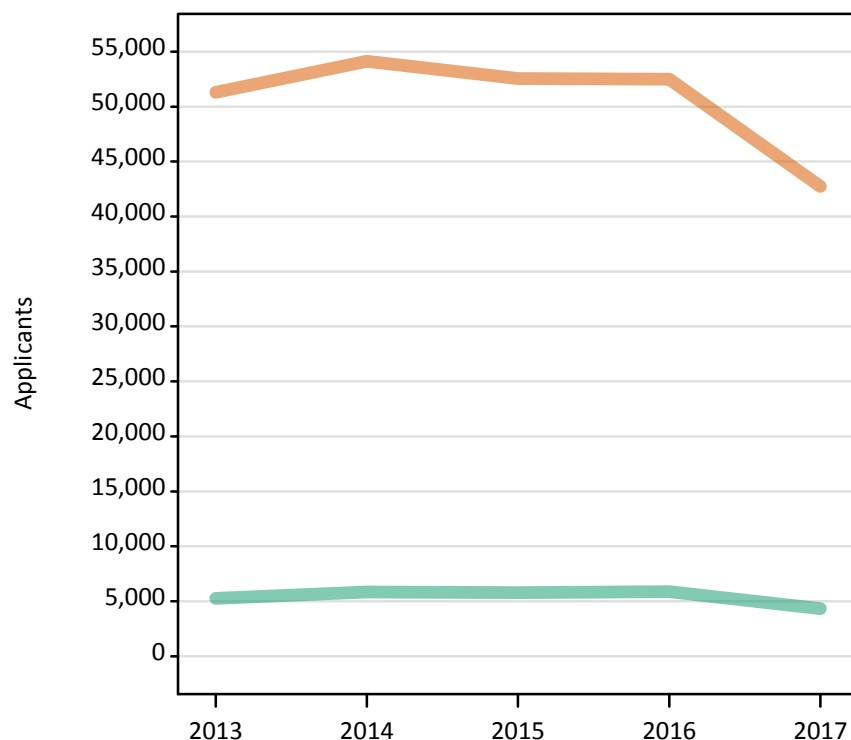
Men
Women



Note: The percentage change is not plotted in the above chart for groups with fewer than 500 applicants in any one cycle.

FB.2.6 Applicants by sex : UK

Men
Women



FB.2.7 Applicants by age and sex : UK

Age group and sex of applicant		2013	2014	2015	2016	2017
Under 18	Women					
	Men					
18	Women	11,250	11,450	11,910	11,620	10,680
	Men	500	530	530	520	470
19	Women	6,230	6,520	6,190	6,310	5,230
	Men	420	430	440	410	340
20-24	Women	13,930	14,880	13,970	13,130	10,400
	Men	1,190	1,340	1,250	1,180	860
25-29	Women	7,690	8,310	7,960	8,070	6,000
	Men	950	1,000	950	950	700
30-34	Women	5,020	5,220	4,890	5,110	3,960
	Men	740	770	730	790	490
35 and over	Women	7,110	7,670	7,580	8,190	6,440
	Men	1,470	1,760	1,880	2,030	1,490
All ages	Women	51,290	54,120	52,550	52,490	42,750
	Men	5,270	5,830	5,780	5,880	4,340

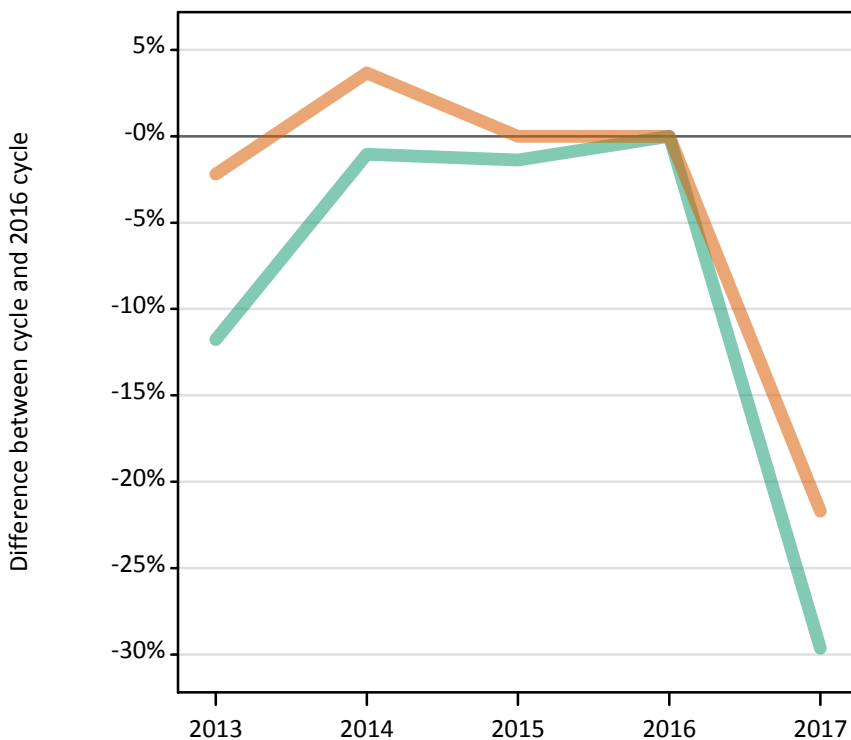
FB.2.8 Applicants by age and sex : UK

Difference between cycle and 2016 cycle

Age group and sex of applicant		2013	2014	2015	2016	2017
Under 18	Women					
	Men					
18	Women	-3%	-1%	2%	0%	-8%
	Men	-4%	3%	2%	0%	-10%
19	Women	-1%	3%	-2%	0%	-17%
	Men	1%	4%	8%	0%	-17%
20-24	Women	6%	13%	6%	0%	-21%
	Men	1%	13%	6%	0%	-28%
25-29	Women	-5%	3%	-1%	0%	-26%
	Men	0%	5%	-0%	0%	-27%
30-34	Women	-2%	2%	-4%	0%	-23%
	Men	-6%	-2%	-7%	0%	-37%
35 and over	Women	-13%	-6%	-7%	0%	-21%
	Men	-28%	-13%	-7%	0%	-27%
All ages	Women	-2%	3%	0%	0%	-19%
	Men	-10%	-1%	-2%	0%	-26%

FB.2.9 Applicants by sex : England
 Difference between cycle and 2016 cycle

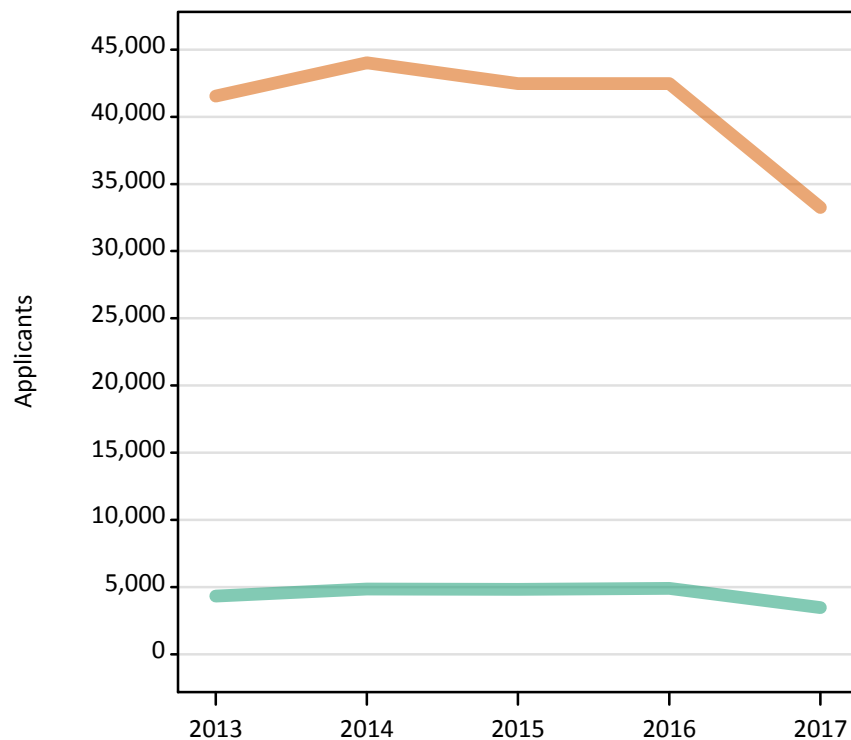
Men
 Women



Note: The percentage change is not plotted in the above chart for groups with fewer than 500 applicants in any one cycle.

FB.2.10 Applicants by sex : England

Men
 Women



FB.2.11 Applicants by age and sex : England

Age group and sex of applicant		2013	2014	2015	2016	2017
Under 18	Women					
	Men					
18	Women	8,640	8,870	9,200	9,040	8,140
	Men	340	370	380	370	320
19	Women	5,040	5,340	5,070	5,100	4,120
	Men	330	340	370	310	270
20-24	Women	11,240	12,110	11,270	10,540	8,060
	Men	960	1,090	1,010	960	640
25-29	Women	6,280	6,730	6,370	6,550	4,560
	Men	760	820	760	760	520
30-34	Women	4,220	4,360	4,040	4,210	3,040
	Men	630	650	620	660	390
35 and over	Women	6,110	6,610	6,510	7,030	5,330
	Men	1,320	1,600	1,690	1,850	1,320
All ages	Women	41,550	44,030	42,480	42,480	33,260
	Men	4,330	4,860	4,840	4,910	3,460

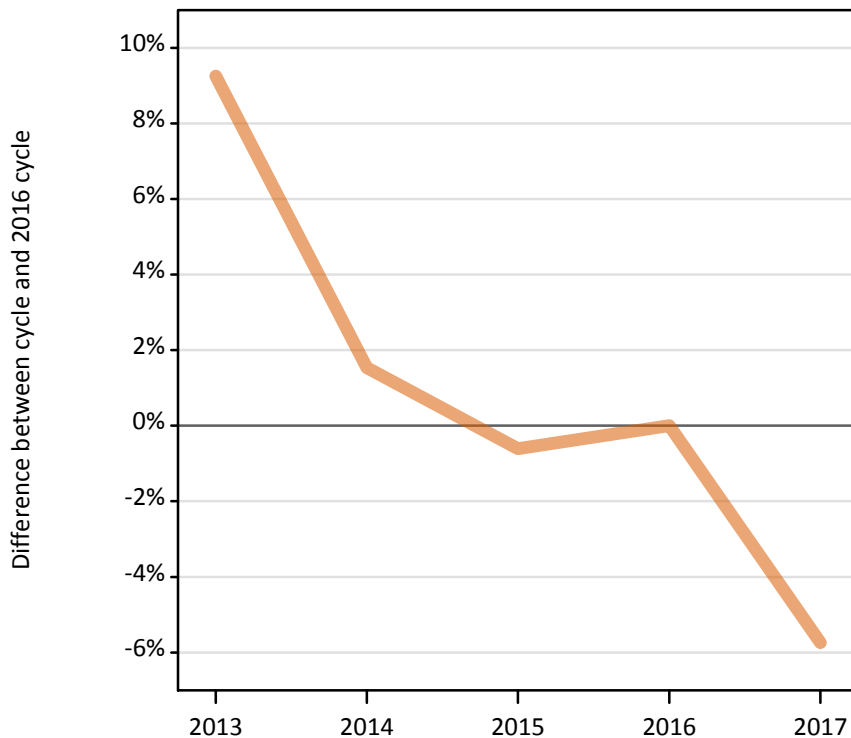
FB.2.12 Applicants by age and sex : England

Difference between cycle and 2016 cycle

Age group and sex of applicant		2013	2014	2015	2016	2017
Under 18	Women					
	Men					
18	Women	-4%	-2%	2%	0%	-10%
	Men	-10%	0%	2%	0%	-14%
19	Women	-1%	5%	-1%	0%	-19%
	Men	6%	9%	22%	0%	-13%
20-24	Women	7%	15%	7%	0%	-24%
	Men	-0%	13%	6%	0%	-34%
25-29	Women	-4%	3%	-3%	0%	-30%
	Men	0%	7%	0%	0%	-32%
30-34	Women	0%	4%	-4%	0%	-28%
	Men	-5%	-2%	-6%	0%	-41%
35 and over	Women	-13%	-6%	-7%	0%	-24%
	Men	-28%	-14%	-9%	0%	-28%
All ages	Women	-2%	4%	-0%	0%	-22%
	Men	-12%	-1%	-1%	0%	-30%

FB.2.13 Applicants by sex : Northern Ireland
Difference between cycle and 2016 cycle

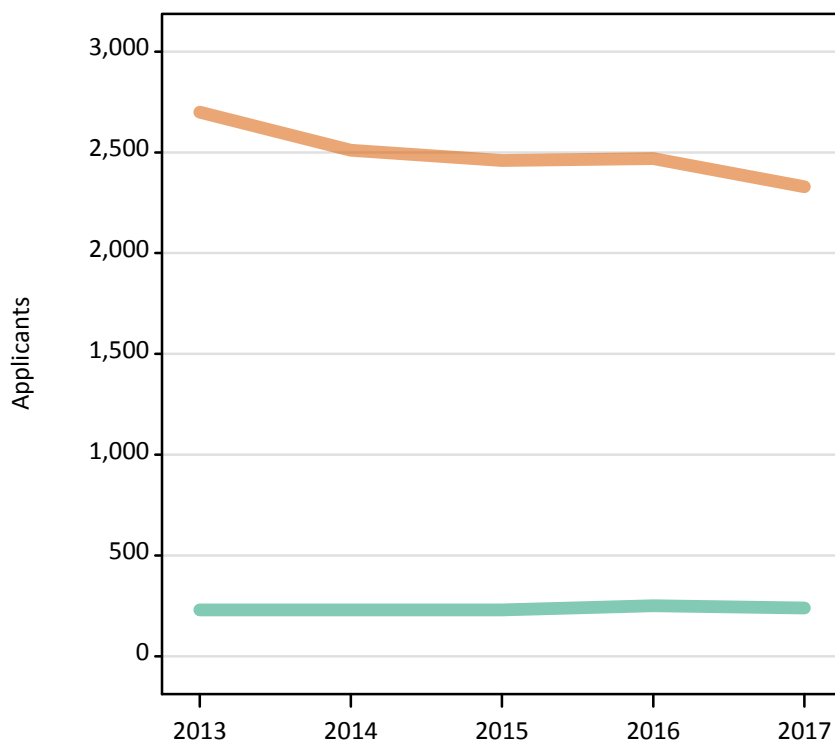
Men
Women



Note: The percentage change is not plotted in the above chart for groups with fewer than 500 applicants in any one cycle.

FB.2.14 Applicants by sex : Northern Ireland

Men
Women



FB.2.15 Applicants by age and sex : Northern Ireland

Age group and sex of applicant		2013	2014	2015	2016	2017
Under 18	Women					
	Men					
18	Women	930	830	850	840	820
	Men	60	60	50	50	70
19	Women	400	370	330	370	360
	Men	30	30	30	40	40
20-24	Women	750	690	670	630	590
	Men	50	70	50	60	60
25-29	Women	290	320	300	300	240
	Men	40	40	40	40	30
30-34	Women	160	170	160	160	150
	Men	20	20	20	20	20
35 and over	Women	170	140	150	170	170
	Men	20	20	30	30	20
All ages	Women	2,700	2,510	2,460	2,470	2,330
	Men	230	230	230	250	240

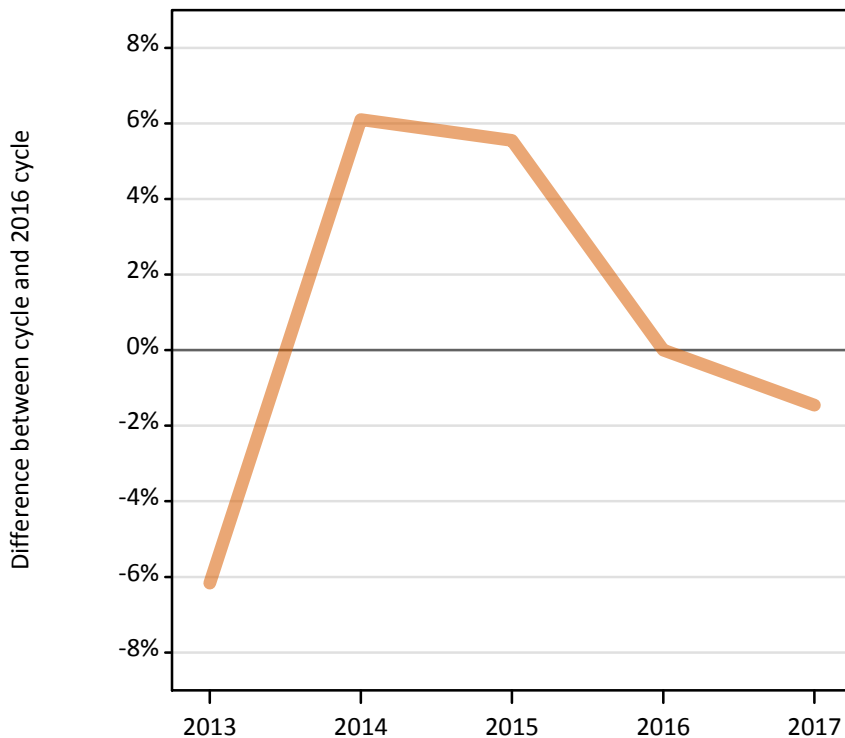
FB.2.16 Applicants by age and sex : Northern Ireland

Difference between cycle and 2016 cycle

Age group and sex of applicant		2013	2014	2015	2016	2017
Under 18	Women					
	Men					
18	Women	11%	-1%	2%	0%	-1%
	Men	20%	18%	6%	0%	35%
19	Women	8%	-0%	-12%	0%	-4%
	Men	-26%	-31%	-24%	0%	-17%
20-24	Women	18%	9%	6%	0%	-7%
	Men	-17%	5%	-17%	0%	-2%
25-29	Women	-2%	6%	0%	0%	-19%
	Men	2%	-12%	-19%	0%	-21%
30-34	Women	-1%	2%	-5%	0%	-9%
	Men	-13%	-30%	-4%	0%	-13%
35 and over	Women	0%	-18%	-9%	0%	-1%
	Men	-32%	-32%	0%	0%	-45%
All ages	Women	9%	2%	-1%	0%	-6%
	Men	-9%	-9%	-11%	0%	-6%

FB.2.17 Applicants by sex : Scotland
 Difference between cycle and 2016 cycle

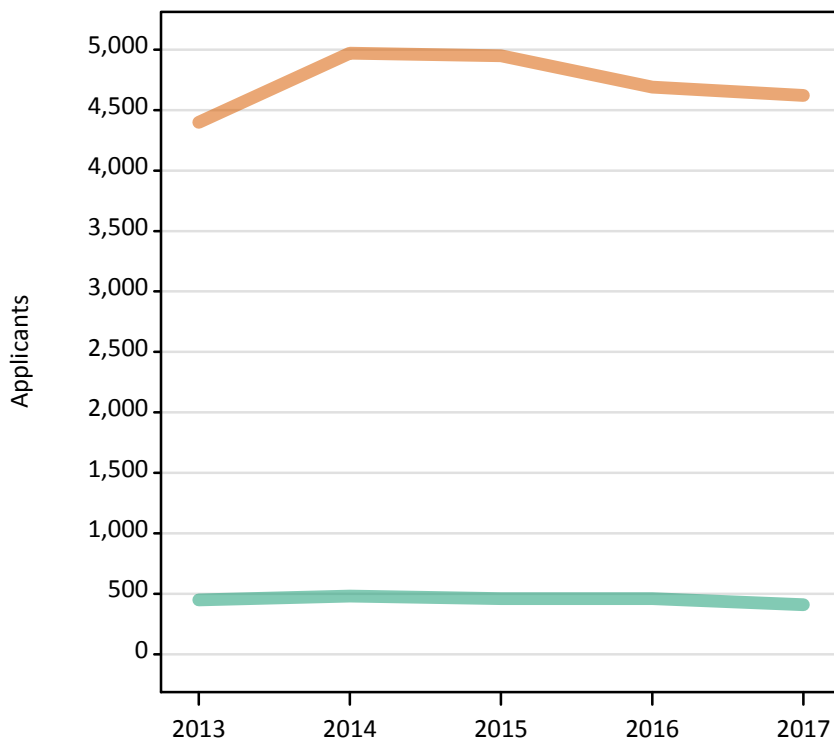
Men
 Women



Note: The percentage change is not plotted in the above chart for groups with fewer than 500 applicants in any one cycle.

FB.2.18 Applicants by sex : Scotland

Men
 Women



FB.2.19 Applicants by age and sex : Scotland

Age group and sex of applicant		2013	2014	2015	2016	2017
Under 18	Women					
	Men					
18	Women	1,110	1,170	1,210	1,090	1,100
	Men	70	70	70	70	40
19	Women	510	530	490	500	440
	Men	40	40	20	40	20
20-24	Women	1,190	1,360	1,270	1,150	1,110
	Men	100	120	120	100	100
25-29	Women	660	800	830	770	760
	Men	80	90	90	90	90
30-34	Women	370	450	480	470	510
	Men	60	70	50	70	60
35 and over	Women	530	630	640	670	660
	Men	90	100	110	90	90
All ages	Women	4,400	4,970	4,950	4,690	4,620
	Men	450	480	460	460	410

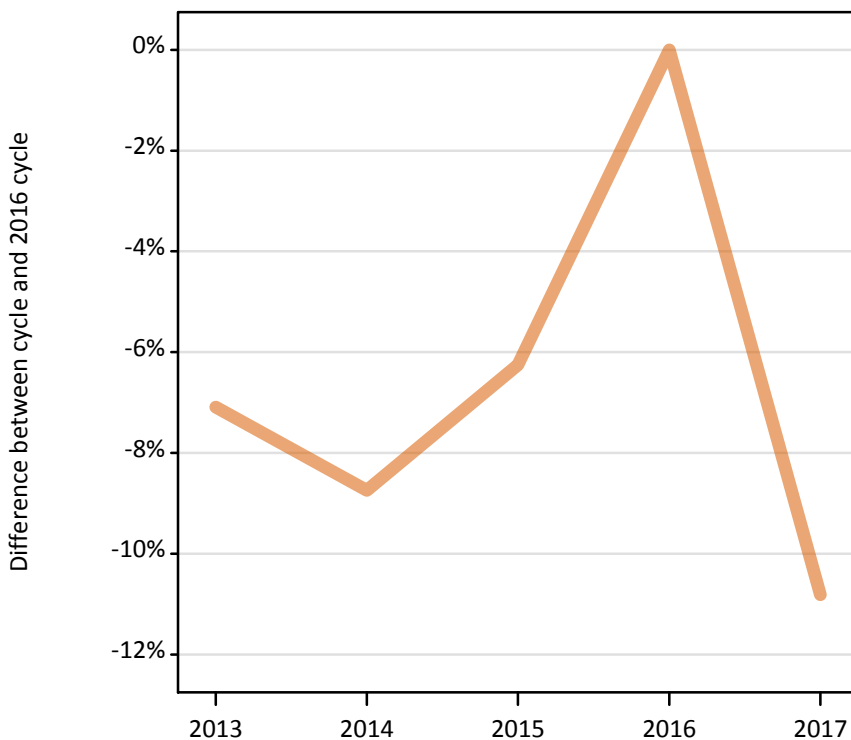
FB.2.20 Applicants by age and sex : Scotland

Difference between cycle and 2016 cycle

Age group and sex of applicant		2013	2014	2015	2016	2017
Under 18	Women					
	Men					
18	Women	1%	7%	11%	0%	1%
	Men	3%	-1%	-6%	0%	-41%
19	Women	0%	4%	-2%	0%	-13%
	Men	8%	8%	-41%	0%	-38%
20-24	Women	4%	18%	10%	0%	-4%
	Men	1%	13%	15%	0%	-2%
25-29	Women	-14%	4%	7%	0%	-1%
	Men	-7%	-3%	3%	0%	1%
30-34	Women	-21%	-4%	2%	0%	9%
	Men	-13%	0%	-19%	0%	-13%
35 and over	Women	-21%	-6%	-5%	0%	-2%
	Men	-2%	15%	22%	0%	2%
All ages	Women	-6%	6%	6%	0%	-1%
	Men	-2%	5%	2%	0%	-11%

FB.2.21 Applicants by sex : Wales
Difference between cycle and 2016 cycle

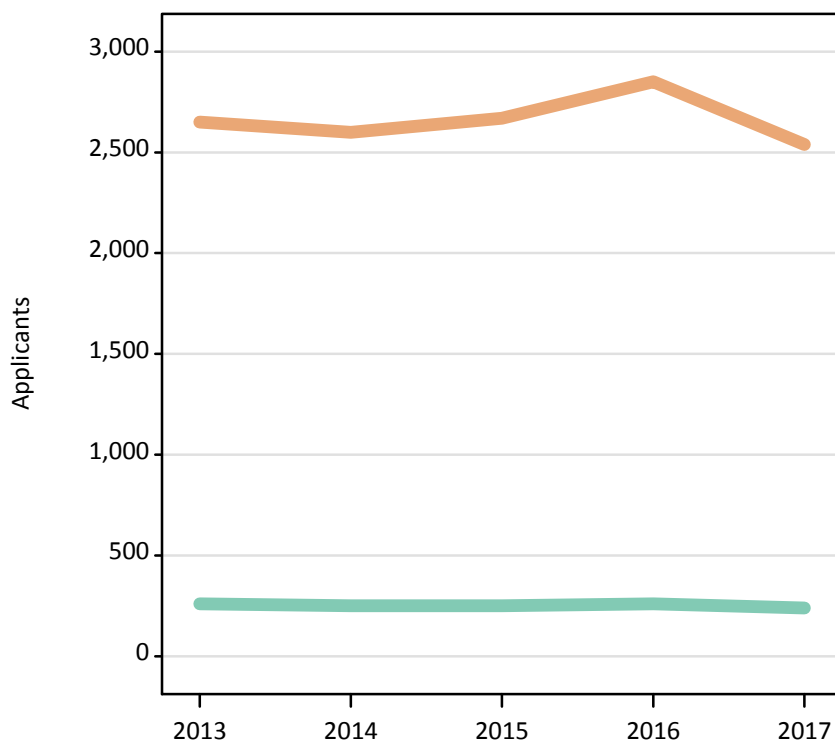
Men
Women



Note: The percentage change is not plotted in the above chart for groups with fewer than 500 applicants in any one cycle.

FB.2.22 Applicants by sex : Wales

Men
Women



FB.2.23 Applicants by age and sex : Wales

Age group and sex of applicant		2013	2014	2015	2016	2017
Under 18	Women					
	Men					
18	Women	580	580	650	650	610
	Men	30	30	30	30	30
19	Women	290	290	300	330	310
	Men	20	20	20	20	20
20-24	Women	760	720	760	810	640
	Men	80	80	70	60	60
25-29	Women	460	460	460	460	430
	Men	60	50	60	60	50
30-34	Women	270	250	220	270	270
	Men	30	30	40	30	30
35 and over	Women	300	300	290	320	280
	Men	40	40	50	60	50
All ages	Women	2,650	2,600	2,670	2,850	2,540
	Men	260	250	250	260	240

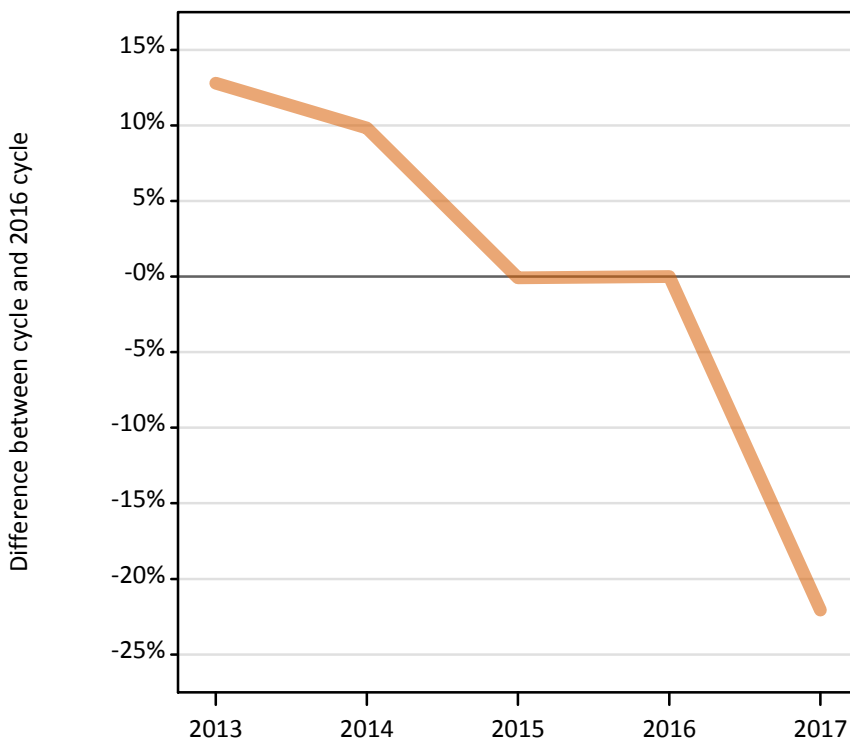
FB.2.24 Applicants by age and sex : Wales

Difference between cycle and 2016 cycle

Age group and sex of applicant		2013	2014	2015	2016	2017
Under 18	Women					
	Men					
18	Women	-12%	-11%	-1%	0%	-7%
	Men	4%	20%	16%	0%	36%
19	Women	-13%	-12%	-8%	0%	-7%
	Men	-22%	-9%	-35%	0%	-26%
20-24	Women	-7%	-11%	-7%	0%	-21%
	Men	39%	32%	18%	0%	0%
25-29	Women	-1%	1%	1%	0%	-5%
	Men	11%	-4%	4%	0%	-5%
30-34	Women	-1%	-10%	-21%	0%	-3%
	Men	0%	-3%	6%	0%	-18%
35 and over	Women	-6%	-7%	-10%	0%	-11%
	Men	-33%	-33%	-23%	0%	-10%
All ages	Women	-7%	-9%	-6%	0%	-11%
	Men	2%	-1%	-2%	0%	-5%

FB.2.25 Applicants by sex : EU (excluding UK)
Difference between cycle and 2016 cycle

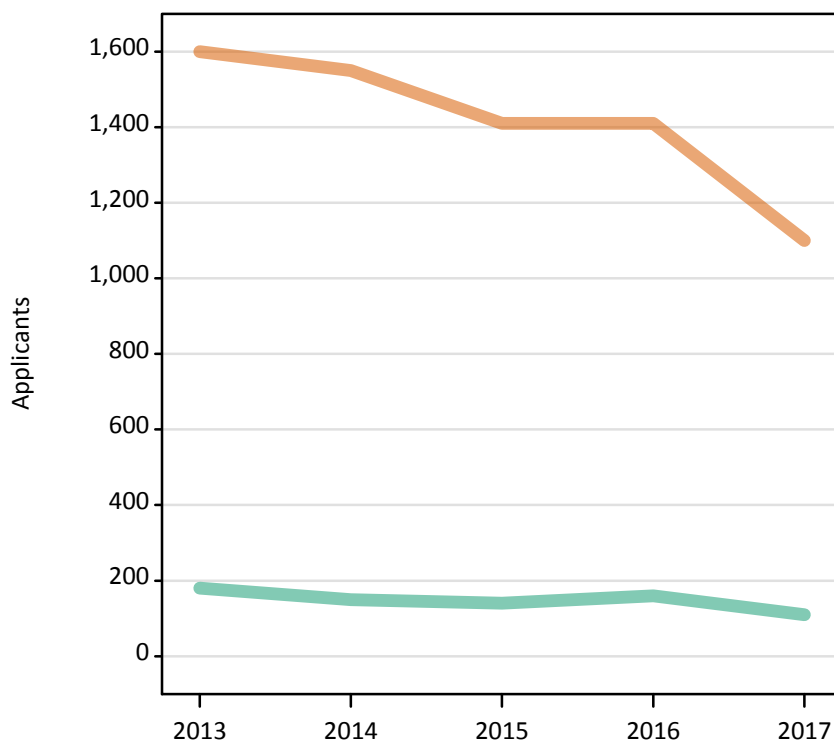
Men
Women



Note: The percentage change is not plotted in the above chart for groups with fewer than 500 applicants in any one cycle.

FB.2.26 Applicants by sex : EU (excluding UK)

Men
Women



FB.2.27 Applicants by age and sex : EU (excluding UK)

Age group and sex of applicant		2013	2014	2015	2016	2017
Under 18	Women					
	Men					
18	Women	400	340	310	340	250
	Men	30	20	20	30	20
19	Women	370	380	350	360	290
	Men	30	30	30	30	20
20-24	Women	500	490	460	430	370
	Men	60	50	40	50	30
25-29	Women	160	160	150	120	80
	Men	20	20	20	20	10
30-34	Women	50	50	40	30	30
	Men	10	10	10	10	0
35 and over	Women	50	60	50	60	40
	Men	30	20	20	30	20
All ages	Women	1,600	1,550	1,410	1,410	1,100
	Men	180	150	140	160	110

FB.2.28 Applicants by age and sex : EU (excluding UK)

Difference between cycle and 2016 cycle

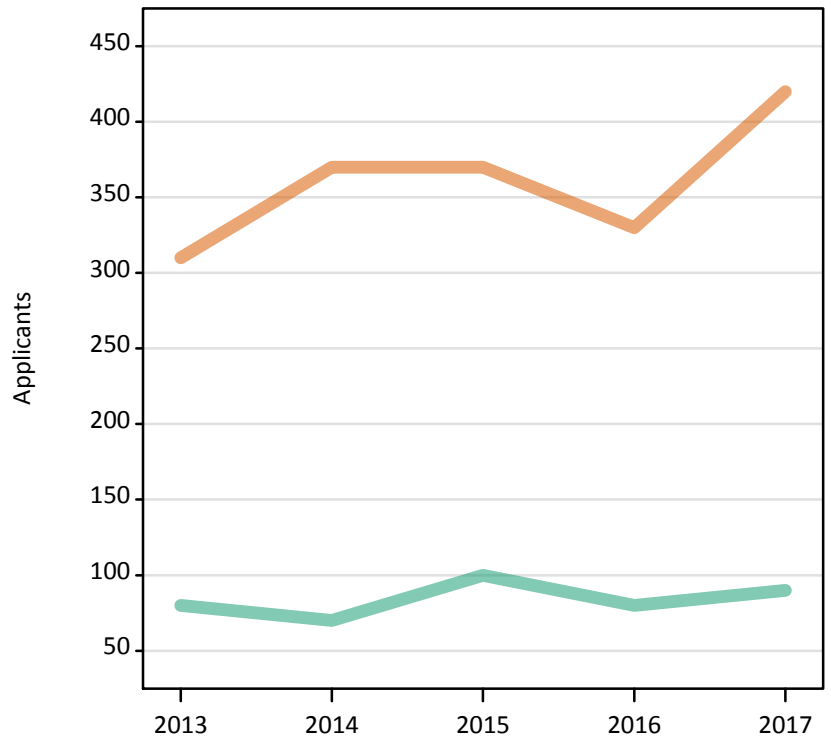
Age group and sex of applicant		2013	2014	2015	2016	2017
Under 18	Women					
	Men					
18	Women	15%	0%	-11%	0%	-29%
	Men	-13%	-27%	-33%	0%	-33%
19	Women	2%	3%	-3%	0%	-21%
	Men	4%	-7%	0%	0%	-25%
20-24	Women	16%	14%	6%	0%	-14%
	Men	12%	4%	-14%	0%	-31%
25-29	Women	26%	29%	20%	0%	-39%
	Men	38%	38%	-6%	0%	-38%
30-34	Women	41%	35%	15%	0%	-15%
	Men	86%	14%	14%	0%	-57%
35 and over	Women	-7%	7%	-5%	0%	-27%
	Men	-14%	-45%	-21%	0%	-45%
All ages	Women	13%	10%	-0%	0%	-22%
	Men	8%	-9%	-11%	0%	-33%

FB.2.29 Applicants by sex : Not EU
Difference between cycle and 2016 cycle

[Chart suppressed due to small numbers]

FB.2.30 Applicants by sex : Not EU

Men
Women



FB.2.31 Applicants by age and sex : Not EU

Age group and sex of applicant		2013	2014	2015	2016	2017
Under 18	Women					
	Men					
18	Women	60	60	70	50	80
	Men	10	10	10	10	10
19	Women	40	50	40	30	50
	Men	0	10	10	10	10
20-24	Women	90	130	100	100	120
	Men	30	20	30	20	20
25-29	Women	60	50	80	60	70
	Men	30	10	20	10	20
30-34	Women	30	30	30	30	50
	Men	10	10	20	10	20
35 and over	Women	20	40	40	50	50
	Men	10	10	10	20	10
All ages	Women	310	370	370	330	420
	Men	80	70	100	80	90

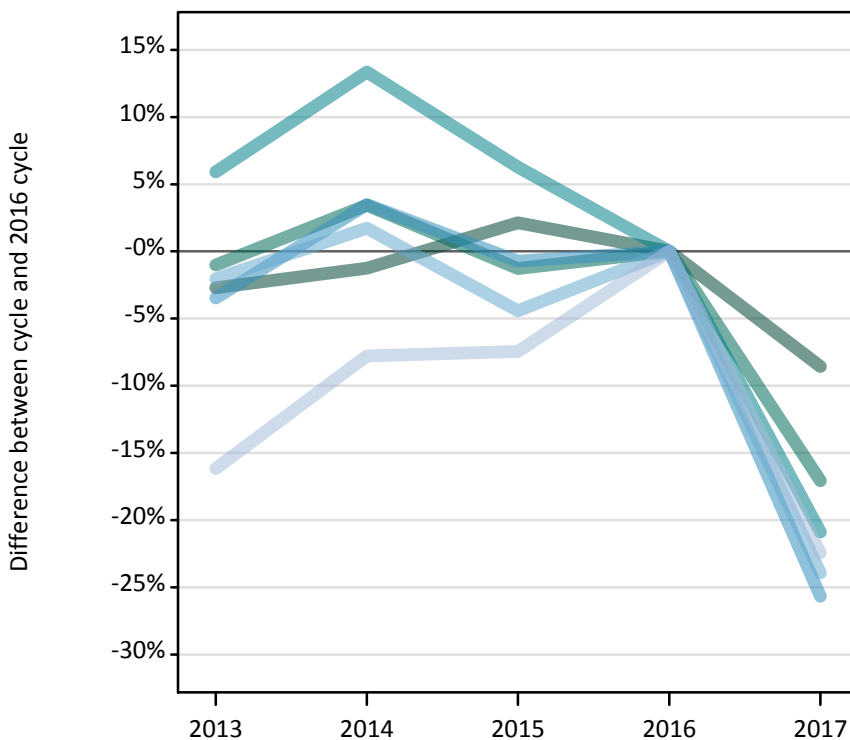
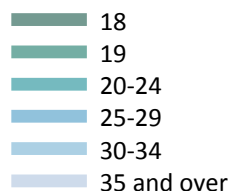
FB.2.32 Applicants by age and sex : Not EU

Difference between cycle and 2016 cycle

Age group and sex of applicant		2013	2014	2015	2016	2017
Under 18	Women					
	Men					
18	Women	11%	4%	25%	0%	43%
	Men	-25%	0%	25%	0%	25%
19	Women	3%	41%	24%	0%	53%
	Men	-73%	-45%	-18%	0%	-18%
20-24	Women	-7%	24%	1%	0%	15%
	Men	39%	0%	72%	0%	33%
25-29	Women	12%	-9%	37%	0%	18%
	Men	108%	-8%	31%	0%	31%
30-34	Women	-10%	10%	10%	0%	57%
	Men	10%	0%	70%	0%	60%
35 and over	Women	-56%	-4%	-7%	0%	18%
	Men	-52%	-57%	-33%	0%	-57%
All ages	Women	-6%	13%	14%	0%	29%
	Men	-1%	-22%	19%	0%	5%

FB.2.33 Applicants by domicile and age : All domiciles

Difference between cycle and 2016 cycle



Note: The percentage change is not plotted in the above chart for groups with fewer than 500 applicants in any one cycle.

FB.2.34 Applicants by domicile and age : All domiciles

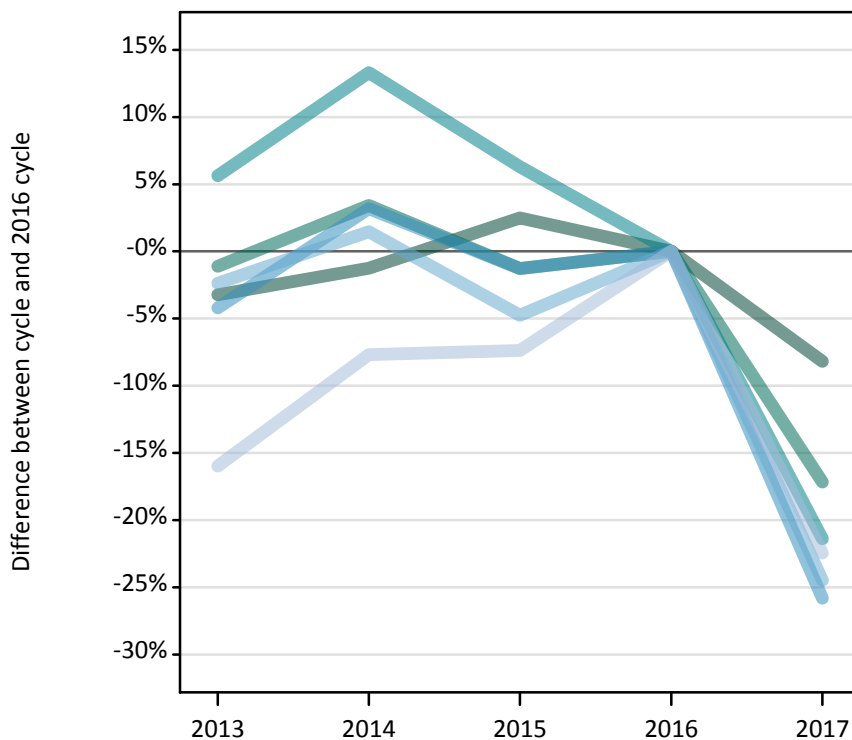
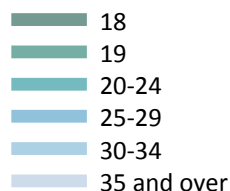
Domicile and age group		2013	2014	2015	2016	2017
All domiciles	Under 18					
	18	12,230	12,410	12,840	12,570	11,500
	19	7,080	7,400	7,070	7,160	5,940
	20-24	15,800	16,910	15,850	14,910	11,800
	25-29	8,910	9,550	9,160	9,230	6,860
	30-34	5,860	6,080	5,720	5,980	4,550
	35 and over	8,690	9,560	9,590	10,370	8,040

FB.2.35 Applicants by domicile and age : All domiciles

Difference between cycle and 2016 cycle

Domicile and age group		2013	2014	2015	2016	2017
All domiciles	Under 18					
	18	-3%	-1%	2%	0%	-9%
	19	-1%	3%	-1%	0%	-17%
	20-24	6%	13%	6%	0%	-21%
	25-29	-3%	3%	-1%	0%	-26%
	30-34	-2%	2%	-4%	0%	-24%
	35 and over	-16%	-8%	-7%	0%	-22%

FB.2.36 Applicants by domicile and age : UK
Difference between cycle and 2016 cycle



Note: The percentage change is not plotted in the above chart for groups with fewer than 500 applicants in any one cycle.

FB.2.37 Applicants by domicile and age : UK

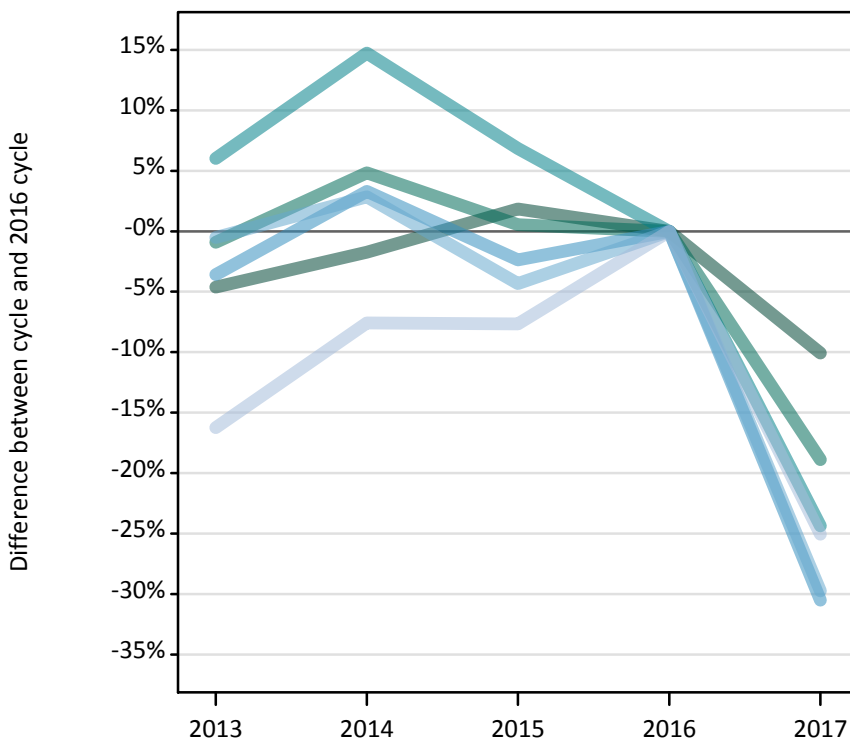
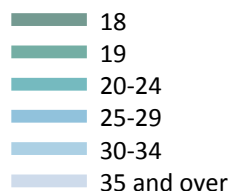
Domicile and age group		2013	2014	2015	2016	2017
UK	Under 18					
	18	11,750	11,990	12,440	12,140	11,140
	19	6,650	6,950	6,630	6,720	5,570
	20-24	15,120	16,220	15,220	14,310	11,250
	25-29	8,640	9,310	8,900	9,020	6,690
	30-34	5,760	5,990	5,620	5,900	4,460
	35 and over	8,580	9,430	9,460	10,220	7,920

FB.2.38 Applicants by domicile and age : UK
Difference between cycle and 2016 cycle

Domicile and age group		2013	2014	2015	2016	2017
UK	Under 18					
	18	-3%	-1%	2%	0%	-8%
	19	-1%	3%	-1%	0%	-17%
	20-24	6%	13%	6%	0%	-21%
	25-29	-4%	3%	-1%	0%	-26%
	30-34	-2%	1%	-5%	0%	-24%
	35 and over	-16%	-8%	-7%	0%	-22%

FB.2.39 Applicants by domicile and age : England

Difference between cycle and 2016 cycle



Note: The percentage change is not plotted in the above chart for groups with fewer than 500 applicants in any one cycle.

FB.2.40 Applicants by domicile and age : England

Domicile and age group		2013	2014	2015	2016	2017
England	Under 18					
	18	8,980	9,250	9,590	9,410	8,460
	19	5,360	5,670	5,440	5,410	4,390
	20-24	12,190	13,190	12,290	11,500	8,700
	25-29	7,040	7,550	7,130	7,310	5,080
	30-34	4,850	5,010	4,660	4,870	3,420
	35 and over	7,440	8,210	8,200	8,880	6,650

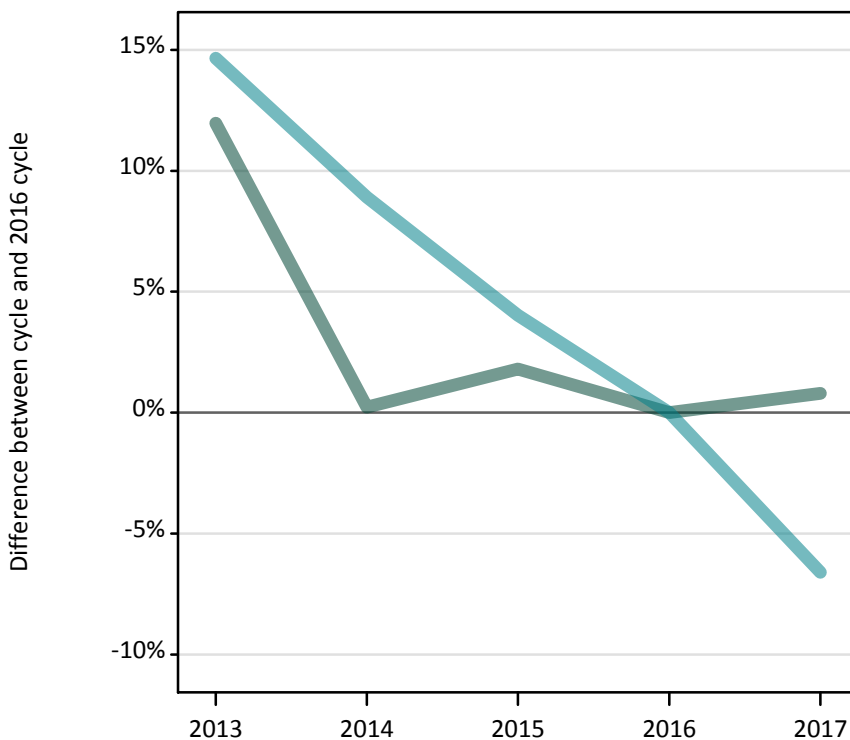
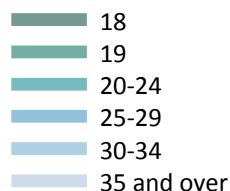
FB.2.41 Applicants by domicile and age : England

Difference between cycle and 2016 cycle

Domicile and age group		2013	2014	2015	2016	2017
England	Under 18					
	18	-5%	-2%	2%	0%	-10%
	19	-1%	5%	1%	0%	-19%
	20-24	6%	15%	7%	0%	-24%
	25-29	-4%	3%	-2%	0%	-30%
	30-34	-1%	3%	-4%	0%	-30%
	35 and over	-16%	-8%	-8%	0%	-25%

FB.2.42 Applicants by domicile and age : Northern Ireland

Difference between cycle and 2016 cycle



Note: The percentage change is not plotted in the above chart for groups with fewer than 500 applicants in any one cycle.

FB.2.43 Applicants by domicile and age : Northern Ireland

Domicile and age group		2013	2014	2015	2016	2017
Northern Ireland	Under 18					
	18	990	890	900	890	890
	19	430	400	360	410	390
	20-24	800	760	720	700	650
	25-29	340	360	340	340	280
	30-34	180	180	180	190	170
	35 and over	190	160	180	200	180

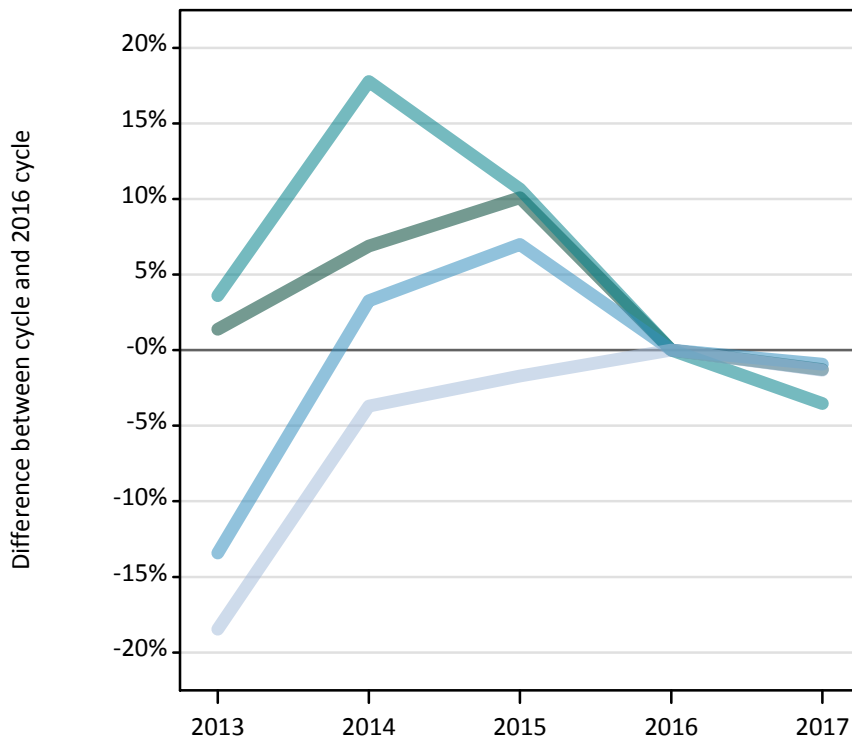
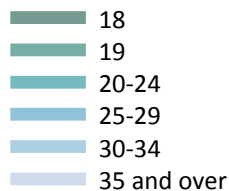
FB.2.44 Applicants by domicile and age : Northern Ireland

Difference between cycle and 2016 cycle

Domicile and age group		2013	2014	2015	2016	2017
Northern Ireland	Under 18					
	18	12%	0%	2%	0%	1%
	19	5%	-3%	-13%	0%	-5%
	20-24	15%	9%	4%	0%	-7%
	25-29	-1%	4%	-2%	0%	-19%
	30-34	-2%	-2%	-5%	0%	-9%
	35 and over	-5%	-21%	-8%	0%	-8%

FB.2.45 Applicants by domicile and age : Scotland

Difference between cycle and 2016 cycle



Note: The percentage change is not plotted in the above chart for groups with fewer than 500 applicants in any one cycle.

FB.2.46 Applicants by domicile and age : Scotland

Domicile and age group		2013	2014	2015	2016	2017
Scotland	Under 18					
	18	1,180	1,240	1,280	1,160	1,150
	19	550	570	520	540	460
	20-24	1,290	1,470	1,380	1,250	1,210
	25-29	740	890	920	860	850
	30-34	430	510	530	530	570
	35 and over	620	730	750	760	750

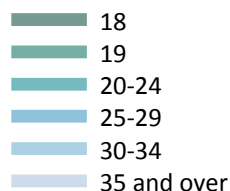
FB.2.47 Applicants by domicile and age : Scotland

Difference between cycle and 2016 cycle

Domicile and age group		2013	2014	2015	2016	2017
Scotland	Under 18					
	18	1%	7%	10%	0%	-1%
	19	1%	4%	-5%	0%	-15%
	20-24	4%	18%	11%	0%	-4%
	25-29	-13%	3%	7%	0%	-1%
	30-34	-20%	-4%	-1%	0%	6%
	35 and over	-18%	-4%	-2%	0%	-1%

FB.2.48 Applicants by domicile and age : Wales

Difference between cycle and 2016 cycle



Note: The percentage change is not plotted in the above chart for groups with fewer than 500 applicants in any one cycle.

FB.2.49 Applicants by domicile and age : Wales

Domicile and age group		2013	2014	2015	2016	2017
Wales	Under 18					
	18	600	610	680	680	640
	19	310	310	320	350	320
	20-24	840	800	820	870	700
	25-29	520	520	520	510	490
	30-34	300	280	250	310	290
	35 and over	340	340	330	380	340

FB.2.50 Applicants by domicile and age : Wales

Difference between cycle and 2016 cycle

Domicile and age group		2013	2014	2015	2016	2017
Wales	Under 18					
	18	-11%	-10%	-1%	0%	-5%
	19	-14%	-12%	-10%	0%	-8%
	20-24	-4%	-8%	-5%	0%	-19%
	25-29	1%	1%	1%	0%	-5%
	30-34	-1%	-9%	-18%	0%	-4%
	35 and over	-10%	-11%	-12%	0%	-11%

FB.2.51 Applicants by domicile and age : EU (excluding UK)

Difference between cycle and 2016 cycle

[Chart suppressed due to small numbers]**FB.2.52 Applicants by domicile and age : EU (excluding UK)**

Domicile and age group		2013	2014	2015	2016	2017
EU (excluding UK)	Under 18					
	18	420	370	330	370	270
	19	400	400	380	390	310
	20-24	560	540	500	480	410
	25-29	180	180	160	140	90
	30-34	60	50	50	40	30
	35 and over	80	80	80	90	60

FB.2.53 Applicants by domicile and age : EU (excluding UK)

Difference between cycle and 2016 cycle

Domicile and age group		2013	2014	2015	2016	2017
EU (excluding UK)	Under 18					
	18	13%	-2%	-13%	0%	-29%
	19	2%	2%	-3%	0%	-21%
	20-24	15%	13%	4%	0%	-15%
	25-29	27%	30%	17%	0%	-39%
	30-34	49%	32%	15%	0%	-22%
	35 and over	-9%	-11%	-11%	0%	-33%

FB.2.54 Applicants by domicile and age : Not EU

Difference between cycle and 2016 cycle

[Chart suppressed due to small numbers]

FB.2.55 Applicants by domicile and age : Not EU

Domicile and age group		2013	2014	2015	2016	2017
Not EU	Under 18					
	18	70	60	80	60	90
	19	40	50	50	50	60
	20-24	120	140	130	120	140
	25-29	90	60	100	70	80
	30-34	40	40	50	40	60
	35 and over	30	50	60	70	60

FB.2.56 Applicants by domicile and age : Not EU

Difference between cycle and 2016 cycle

Domicile and age group		2013	2014	2015	2016	2017
Not EU	Under 18					
	18	7%	3%	25%	0%	41%
	19	-16%	20%	13%	0%	36%
	20-24	0%	20%	12%	0%	18%
	25-29	30%	-9%	36%	0%	20%
	30-34	-5%	7%	25%	0%	58%
	35 and over	-55%	-21%	-15%	0%	-6%

FB.2.57 Technical notes and definitions

Applicants have been able to submit applications for all 2017 courses since early September.

People who submit their applications to UCAS by the January deadline are considered 'on time' applicants for the large majority of courses offered through UCAS. Some art and design courses have a later deadline of 24 March. Almost all main scheme applications have been received by the 24 March deadline.

Subject group 'B7' covers courses related to nursing. These additional tables include applicants who made at least one choice to a 'B7' course by the January deadline. The primary deadline applicant statistics, which include applicants to all courses, are available on the UCAS website.

Counts of the number of applicants reported have been rounded to the nearest 10 applicants, this may result in instances where totals do not equal the sum of the components. Proportional changes have been rounded to the nearest whole percentage point.

Applicants under the age of 18 are not shown, to avoid revealing data for any individual.

Age

This statistical release uses country-specific age definitions which align with the cut off points for school/college cohorts within the different administrations of the UK. For England and Wales ages are defined on the 31 August, for Northern Ireland on the 1 July and for Scotland on the 28 February the following year. Defining ages in this way matches the assignment of children to school cohorts. For applicants outside of the UK the cohort cut off for England and Wales has been used.

Applicant

A person who has made an application in the UCAS system during the cycle reported (including applications for deferred entry). Records of prior acceptance (RPAs) are excluded.

Application

An application to a course at a provider made by an applicant in the UCAS main scheme. Applicants may make up to five main scheme applications.

Country of provider

An applicant may be counted once for each provider country they have applied to in the main scheme. If an applicant has applied to providers in multiple countries then the applicant is counted once within each country of provider applied to.

This statistical release excludes a small number of applications to a provider based in the EU.

Domicile

Declared area of permanent residence. The Channel Islands and the Isle of Man have been assigned as 'Not EU'.

First time applicant

An applicant that did not apply to the UCAS scheme in the previous cycle.

Main scheme

The main UCAS application scheme through which up to five providers/courses can be applied to. This opens in September and closes to new applications on 30 June the following year.

Reapplicant

An applicant that applied to the UCAS scheme in the previous cycle.

Subject group

The JACS3 classification used to classify courses into subject groups.

Tariff group of provider

Providers are grouped as higher, medium or lower tariff based on their average levels of attainment of their accepted applicants (summarised through UCAS Tariff points) in recent cycles. Each group of providers accounted for around a third of all UK 18 year old acceptances in recent cycles.