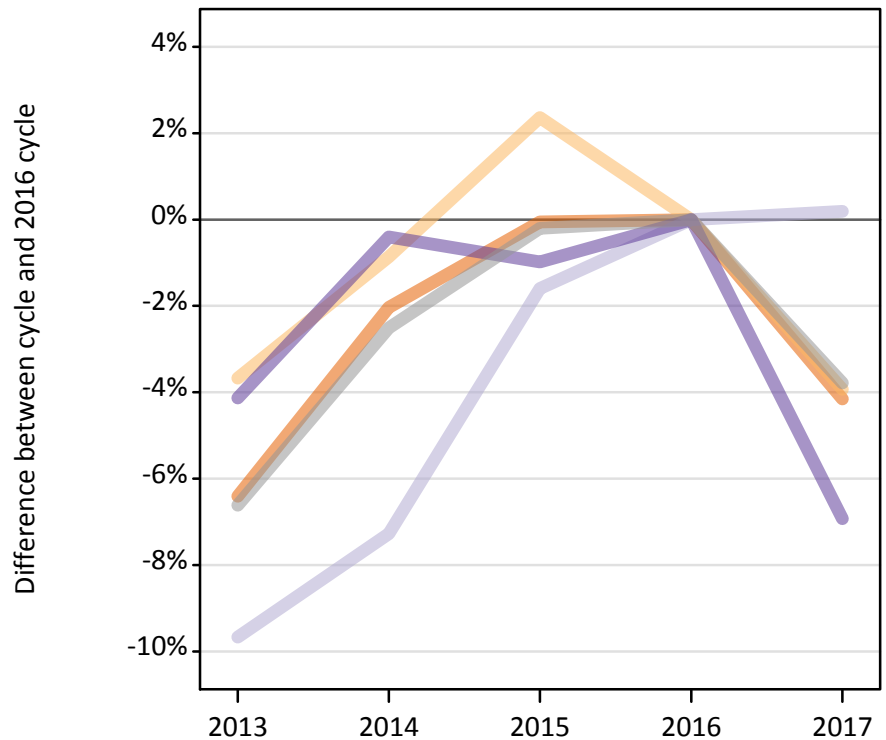
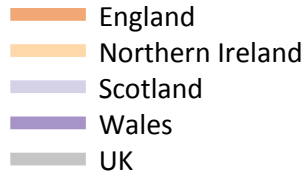


Applications by country and type of provider at the 24 March deadline

F.5.1 Applications by domicile and country of provider : All domiciles

Difference between cycle and 2016 cycle



F.5.2 Applications by domicile and country of provider : All domiciles

Domicile of applicant and country of provider		2013	2014	2015	2016	2017
All domiciles	England	2,135,400	2,235,340	2,280,350	2,281,690	2,186,950
	Northern Ireland	60,310	62,070	64,090	62,610	60,150
	Scotland	268,890	276,030	292,930	297,670	298,250
	Wales	99,500	103,370	102,770	103,790	96,600
	UK	2,564,110	2,676,810	2,740,140	2,745,760	2,641,950

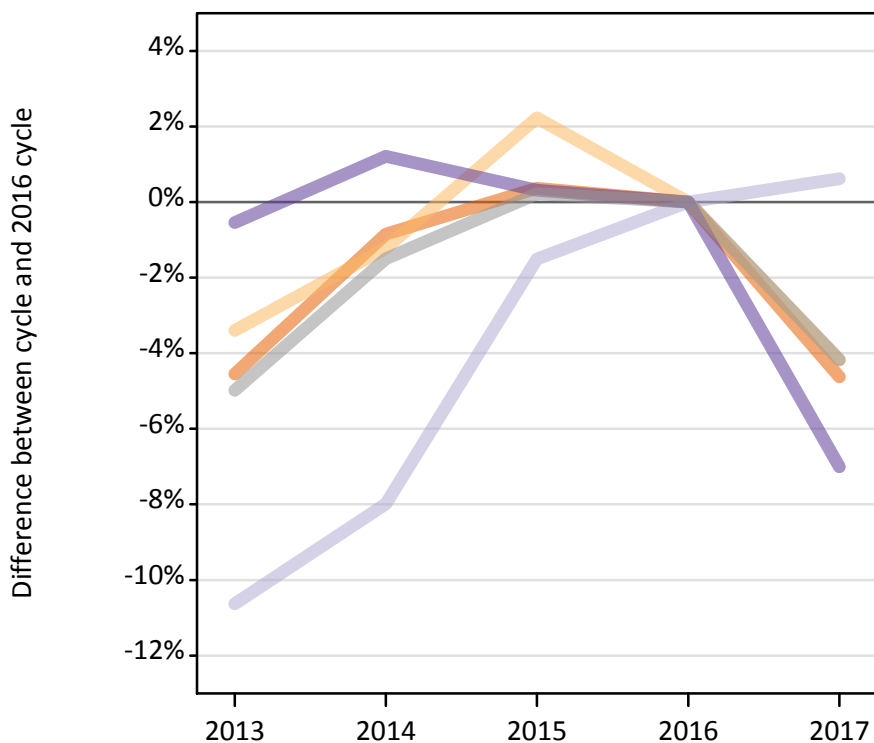
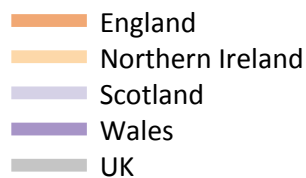
F.5.3 Applications by domicile and country of provider : All domiciles

Difference between cycle and 2016 cycle

Domicile of applicant and country of provider		2013	2014	2015	2016	2017
All domiciles	England	-6%	-2%	-0%	0%	-4%
	Northern Ireland	-4%	-1%	2%	0%	-4%
	Scotland	-10%	-7%	-2%	0%	0%
	Wales	-4%	-0%	-1%	0%	-7%
	UK	-7%	-3%	-0%	0%	-4%

F.5.4 Applications by domicile and country of provider : UK

Difference between cycle and 2016 cycle



F.5.5 Applications by domicile and country of provider : UK

Domicile of applicant and country of provider		2013	2014	2015	2016	2017
UK	England	1,804,270	1,874,210	1,897,230	1,890,260	1,802,900
	Northern Ireland	56,050	57,310	59,310	58,020	55,600
	Scotland	206,030	212,130	227,050	230,540	231,970
	Wales	88,900	90,470	89,660	89,380	83,120
	UK	2,155,250	2,234,120	2,273,260	2,268,200	2,173,580

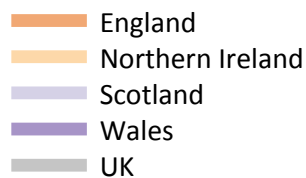
F.5.6 Applications by domicile and country of provider : UK

Difference between cycle and 2016 cycle

Domicile of applicant and country of provider		2013	2014	2015	2016	2017
UK	England	-5%	-1%	0%	0%	-5%
	Northern Ireland	-3%	-1%	2%	0%	-4%
	Scotland	-11%	-8%	-2%	0%	1%
	Wales	-1%	1%	0%	0%	-7%
	UK	-5%	-2%	0%	0%	-4%

F.5.7 Applications by domicile and country of provider : England

Difference between cycle and 2016 cycle



F.5.8 Applications by domicile and country of provider : England

Domicile of applicant and country of provider		2013	2014	2015	2016	2017
England	England	1,721,870	1,787,730	1,807,580	1,798,530	1,716,260
	Northern Ireland	2,400	2,670	3,200	2,570	2,520
	Scotland	35,700	36,130	36,690	36,990	38,900
	Wales	47,720	50,320	50,700	50,150	46,380
	UK	1,807,680	1,876,840	1,898,170	1,888,250	1,804,060

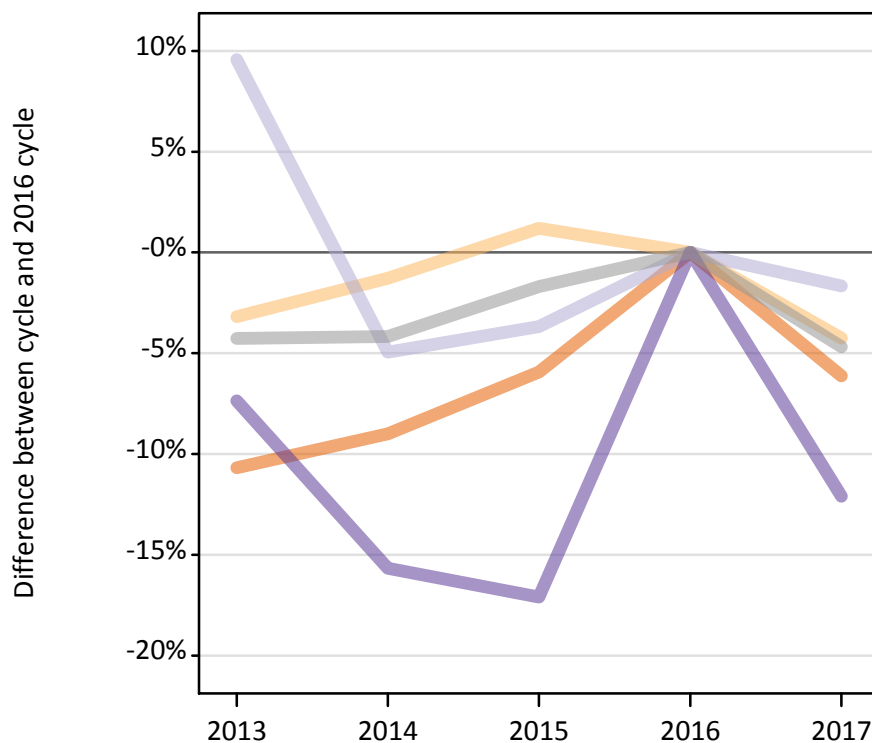
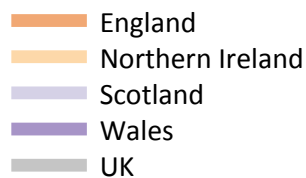
F.5.9 Applications by domicile and country of provider : England

Difference between cycle and 2016 cycle

Domicile of applicant and country of provider		2013	2014	2015	2016	2017
England	England	-4%	-1%	1%	0%	-5%
	Northern Ireland	-7%	4%	24%	0%	-2%
	Scotland	-3%	-2%	-1%	0%	5%
	Wales	-5%	0%	1%	0%	-8%
	UK	-4%	-1%	1%	0%	-4%

F.5.10 Applications by domicile and country of provider : Northern Ireland

Difference between cycle and 2016 cycle



F.5.11 Applications by domicile and country of provider : Northern Ireland

Domicile of applicant and country of provider		2013	2014	2015	2016	2017
Northern Ireland	England	25,260	25,730	26,590	28,270	26,540
	Northern Ireland	53,370	54,420	55,780	55,120	52,780
	Scotland	10,010	8,690	8,800	9,140	8,990
	Wales	1,300	1,180	1,160	1,400	1,230
	UK	89,930	90,010	92,340	93,930	89,530

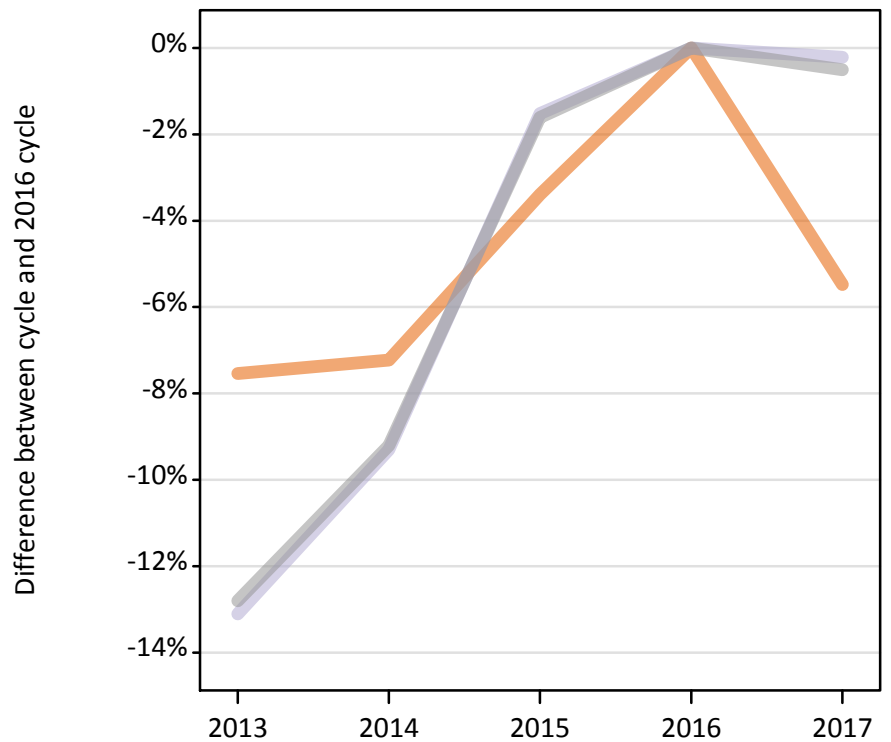
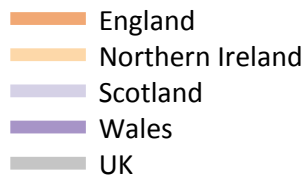
F.5.12 Applications by domicile and country of provider : Northern Ireland

Difference between cycle and 2016 cycle

Domicile of applicant and country of provider		2013	2014	2015	2016	2017
Northern Ireland	England	-11%	-9%	-6%	0%	-6%
	Northern Ireland	-3%	-1%	1%	0%	-4%
	Scotland	10%	-5%	-4%	0%	-2%
	Wales	-7%	-16%	-17%	0%	-12%
	UK	-4%	-4%	-2%	0%	-5%

F.5.13 Applications by domicile and country of provider : Scotland

Difference between cycle and 2016 cycle



F.5.14 Applications by domicile and country of provider : Scotland

Domicile of applicant and country of provider		2013	2014	2015	2016	2017
Scotland	England	9,260	9,290	9,680	10,020	9,470
	Northern Ireland	200	140	220	230	190
	Scotland	159,260	166,240	180,510	183,290	182,890
	Wales	220	230	230	220	220
	UK	168,940	175,900	190,630	193,750	192,770

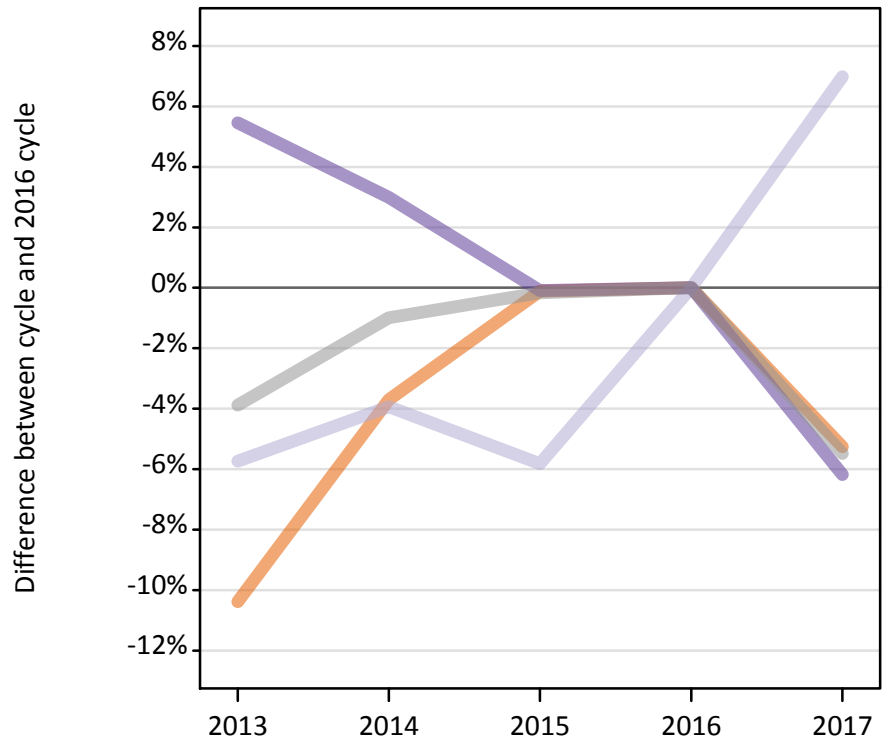
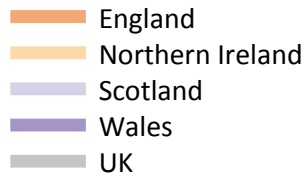
F.5.15 Applications by domicile and country of provider : Scotland

Difference between cycle and 2016 cycle

Domicile of applicant and country of provider		2013	2014	2015	2016	2017
Scotland	England	-8%	-7%	-3%	0%	-5%
	Northern Ireland	-13%	-38%	-2%	0%	-14%
	Scotland	-13%	-9%	-2%	0%	-0%
	Wales	3%	7%	5%	0%	1%
	UK	-13%	-9%	-2%	0%	-1%

F.5.16 Applications by domicile and country of provider : Wales

Difference between cycle and 2016 cycle



F.5.17 Applications by domicile and country of provider : Wales

Domicile of applicant and country of provider		2013	2014	2015	2016	2017
Wales	England	47,890	51,460	53,380	53,440	50,630
	Northern Ireland	90	90	110	100	110
	Scotland	1,050	1,070	1,050	1,120	1,200
	Wales	39,660	38,740	37,580	37,610	35,290
	UK	88,690	91,360	92,120	92,270	87,220

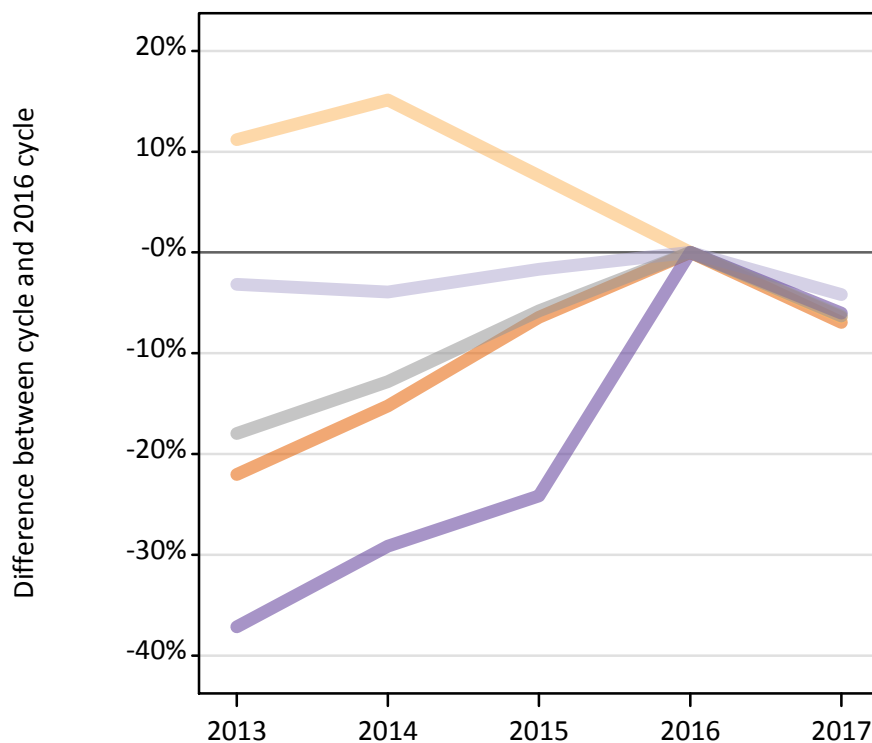
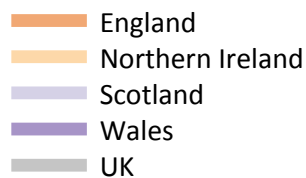
F.5.18 Applications by domicile and country of provider : Wales

Difference between cycle and 2016 cycle

Domicile of applicant and country of provider		2013	2014	2015	2016	2017
Wales	England	-10%	-4%	-0%	0%	-5%
	Northern Ireland	-16%	-13%	8%	0%	2%
	Scotland	-6%	-4%	-6%	0%	7%
	Wales	5%	3%	-0%	0%	-6%
	UK	-4%	-1%	-0%	0%	-5%

F.5.19 Applications by domicile and country of provider : EU (excluding UK)

Difference between cycle and 2016 cycle



F.5.20 Applications by domicile and country of provider : EU (excluding UK)

Domicile of applicant and country of provider		2013	2014	2015	2016	2017
EU (excluding UK)	England	122,290	132,980	146,740	156,850	145,970
	Northern Ireland	3,420	3,540	3,310	3,070	2,870
	Scotland	44,660	44,310	45,340	46,110	44,190
	Wales	4,510	5,080	5,440	7,170	6,740
	UK	174,870	185,910	200,830	213,200	199,770

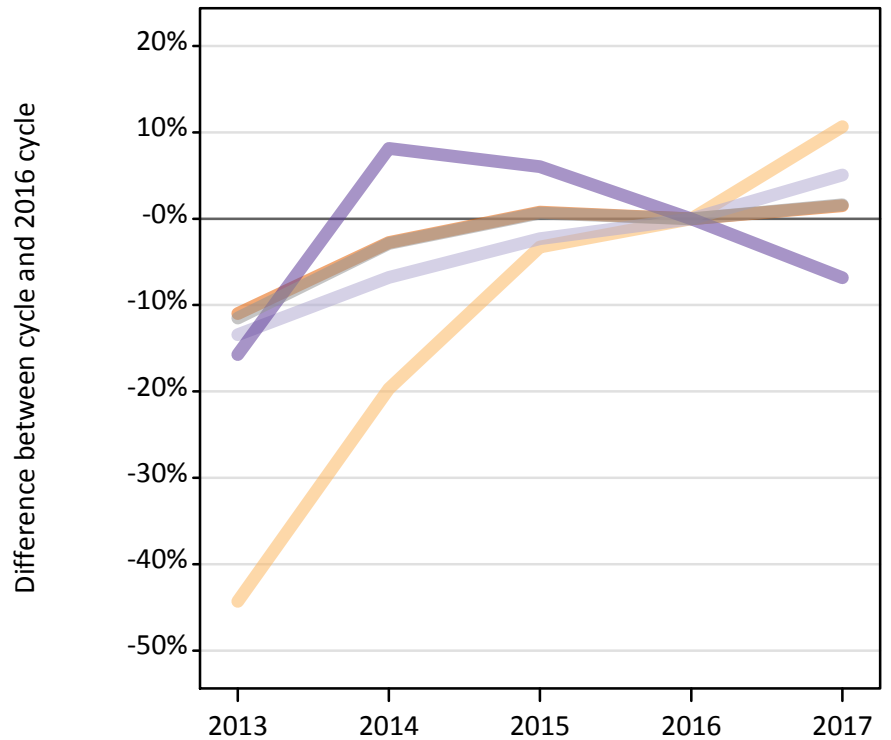
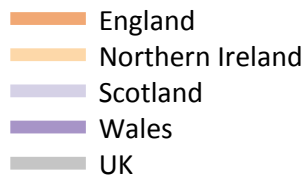
F.5.21 Applications by domicile and country of provider : EU (excluding UK)

Difference between cycle and 2016 cycle

Domicile of applicant and country of provider		2013	2014	2015	2016	2017
EU (excluding UK)	England	-22%	-15%	-6%	0%	-7%
	Northern Ireland	11%	15%	8%	0%	-6%
	Scotland	-3%	-4%	-2%	0%	-4%
	Wales	-37%	-29%	-24%	0%	-6%
	UK	-18%	-13%	-6%	0%	-6%

F.5.22 Applications by domicile and country of provider : Not EU

Difference between cycle and 2016 cycle



F.5.23 Applications by domicile and country of provider : Not EU

Domicile of applicant and country of provider		2013	2014	2015	2016	2017
Not EU	England	208,840	228,150	236,370	234,580	238,080
	Northern Ireland	850	1,220	1,470	1,520	1,680
	Scotland	18,200	19,600	20,540	21,030	22,090
	Wales	6,100	7,820	7,670	7,240	6,740
	UK	233,980	256,780	266,050	264,360	268,590

F.5.24 Applications by domicile and country of provider : Not EU

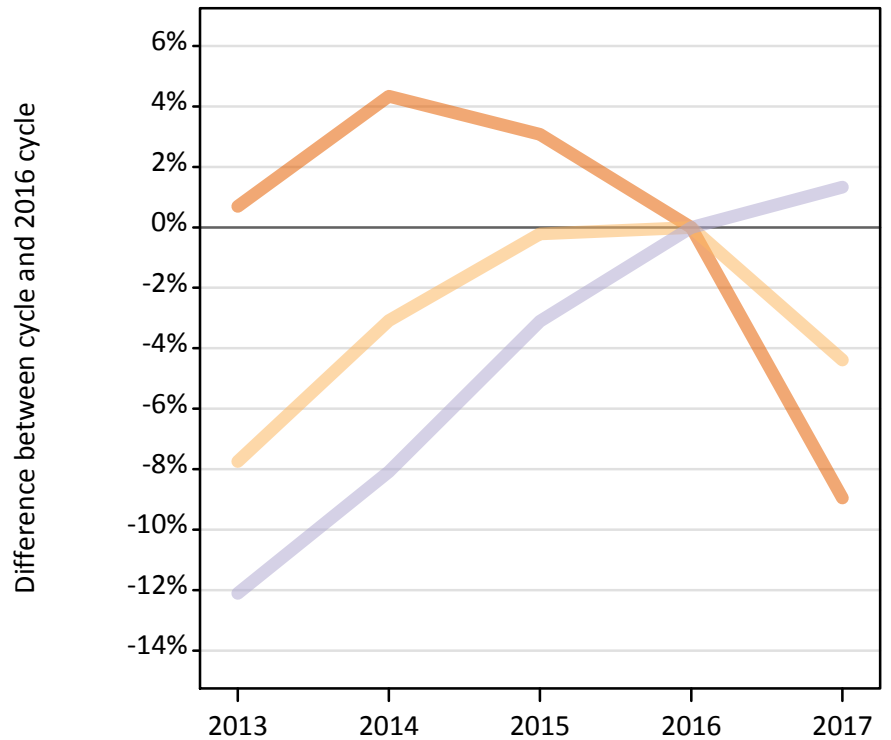
Difference between cycle and 2016 cycle

Domicile of applicant and country of provider		2013	2014	2015	2016	2017
Not EU	England	-11%	-3%	1%	0%	1%
	Northern Ireland	-44%	-20%	-3%	0%	11%
	Scotland	-13%	-7%	-2%	0%	5%
	Wales	-16%	8%	6%	0%	-7%
	UK	-11%	-3%	1%	0%	2%

F.5.25 Applications by domicile and tariff group of provider : All domiciles

Difference between cycle and 2016 cycle

- 1. Lower tariff
- 2. Medium tariff
- 3. Higher tariff



F.5.26 Applications by domicile and tariff group of provider : All domiciles

Domicile of applicant and tariff group of provider		2013	2014	2015	2016	2017
All domiciles	1. Lower tariff	890,180	922,450	911,290	884,080	804,910
	2. Medium tariff	796,780	837,070	861,860	863,720	825,830
	3. Higher tariff	877,150	917,290	966,980	997,950	1,011,210
	All	2,564,110	2,676,810	2,740,140	2,745,760	2,641,950

F.5.27 Applications by domicile and tariff group of provider : All domiciles

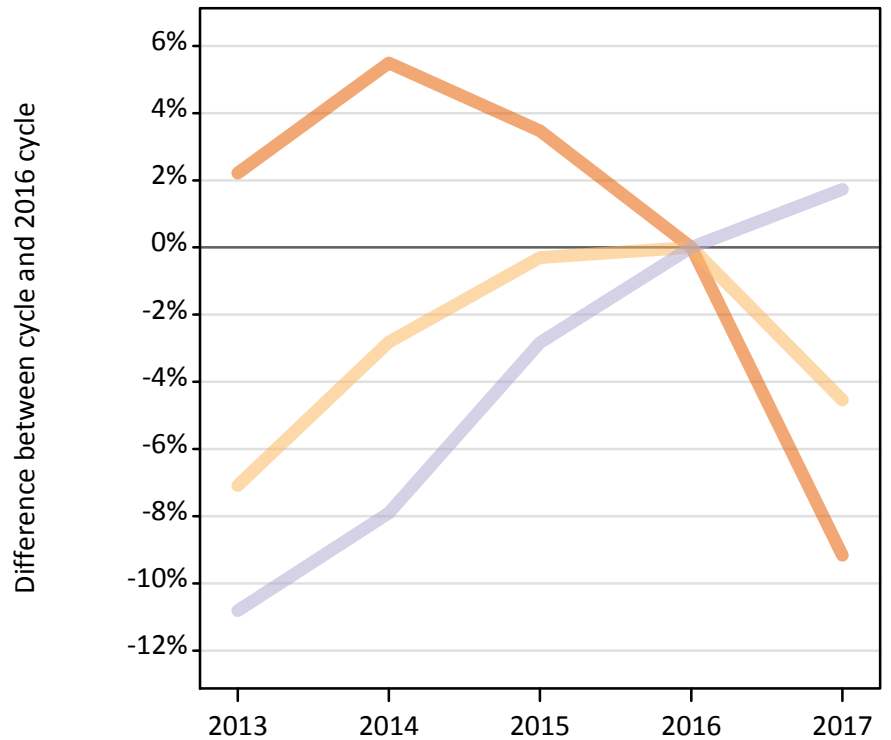
Difference between cycle and 2016 cycle

Domicile of applicant and tariff group of provider		2013	2014	2015	2016	2017
All domiciles	1. Lower tariff	1%	4%	3%	0%	-9%
	2. Medium tariff	-8%	-3%	-0%	0%	-4%
	3. Higher tariff	-12%	-8%	-3%	0%	1%
	All	-7%	-3%	-0%	0%	-4%

F.5.28 Applications by domicile and tariff group of provider : UK

Difference between cycle and 2016 cycle

- 1. Lower tariff
- 2. Medium tariff
- 3. Higher tariff



F.5.29 Applications by domicile and tariff group of provider : UK

Domicile of applicant and tariff group of provider		2013	2014	2015	2016	2017
UK	1. Lower tariff	821,100	847,370	831,180	803,280	729,680
	2. Medium tariff	687,060	718,580	737,160	739,420	705,830
	3. Higher tariff	647,090	668,160	704,920	725,500	738,070
	All	2,155,250	2,234,120	2,273,260	2,268,200	2,173,580

F.5.30 Applications by domicile and tariff group of provider : UK

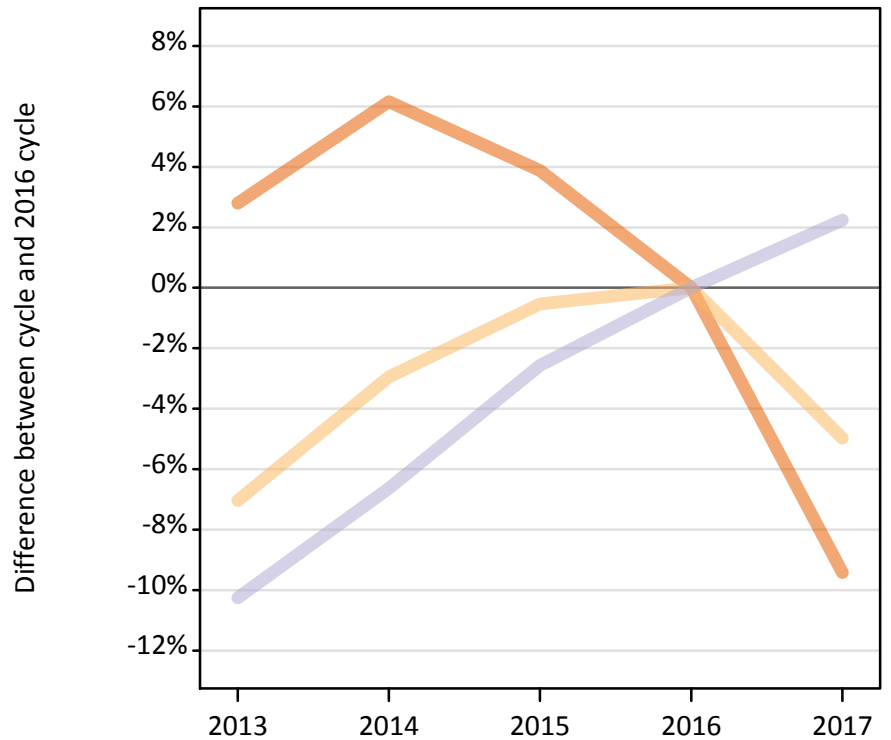
Difference between cycle and 2016 cycle

Domicile of applicant and tariff group of provider		2013	2014	2015	2016	2017
UK	1. Lower tariff	2%	5%	3%	0%	-9%
	2. Medium tariff	-7%	-3%	-0%	0%	-5%
	3. Higher tariff	-11%	-8%	-3%	0%	2%
	All	-5%	-2%	0%	0%	-4%

F.5.31 Applications by domicile and tariff group of provider : England

Difference between cycle and 2016 cycle

- 1. Lower tariff
- 2. Medium tariff
- 3. Higher tariff



F.5.32 Applications by domicile and tariff group of provider : England

Domicile of applicant and tariff group of provider		2013	2014	2015	2016	2017
England	1. Lower tariff	740,890	765,050	748,630	720,680	652,770
	2. Medium tariff	546,910	570,950	585,130	588,280	559,050
	3. Higher tariff	519,890	540,840	564,410	579,290	592,240
	All	1,807,680	1,876,840	1,898,170	1,888,250	1,804,060

F.5.33 Applications by domicile and tariff group of provider : England

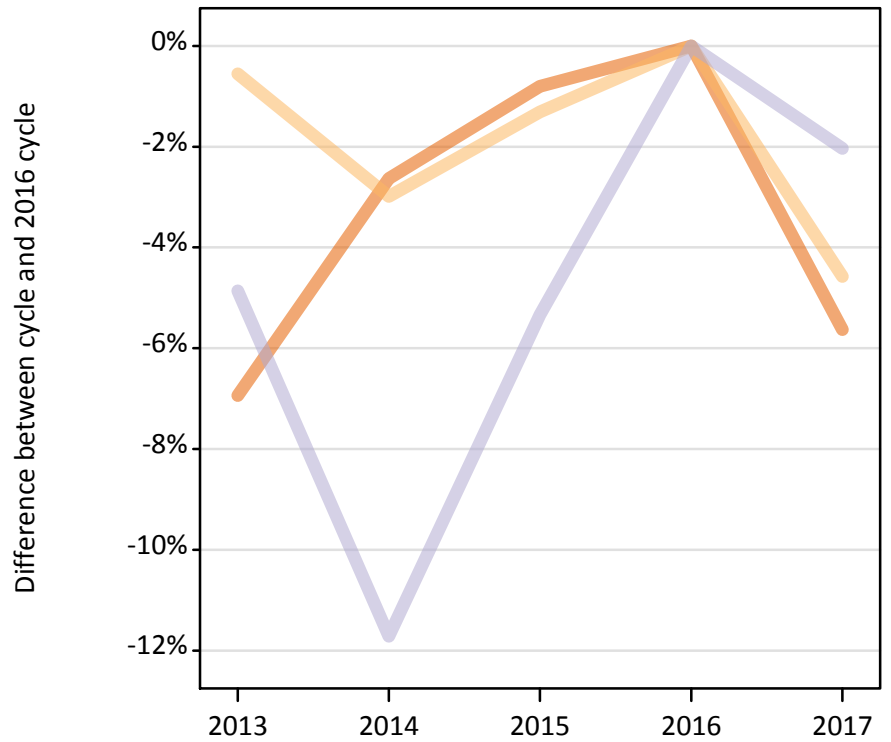
Difference between cycle and 2016 cycle

Domicile of applicant and tariff group of provider		2013	2014	2015	2016	2017
England	1. Lower tariff	3%	6%	4%	0%	-9%
	2. Medium tariff	-7%	-3%	-1%	0%	-5%
	3. Higher tariff	-10%	-7%	-3%	0%	2%
	All	-4%	-1%	1%	0%	-4%

F.5.34 Applications by domicile and tariff group of provider : Northern Ireland

Difference between cycle and 2016 cycle

- 1. Lower tariff
- 2. Medium tariff
- 3. Higher tariff



F.5.35 Applications by domicile and tariff group of provider : Northern Ireland

Domicile of applicant and tariff group of provider		2013	2014	2015	2016	2017
Northern Ireland	1. Lower tariff	41,570	43,500	44,310	44,670	42,150
	2. Medium tariff	34,490	33,650	34,230	34,690	33,100
	3. Higher tariff	13,870	12,870	13,800	14,580	14,280
	All	89,930	90,010	92,340	93,930	89,530

F.5.36 Applications by domicile and tariff group of provider : Northern Ireland

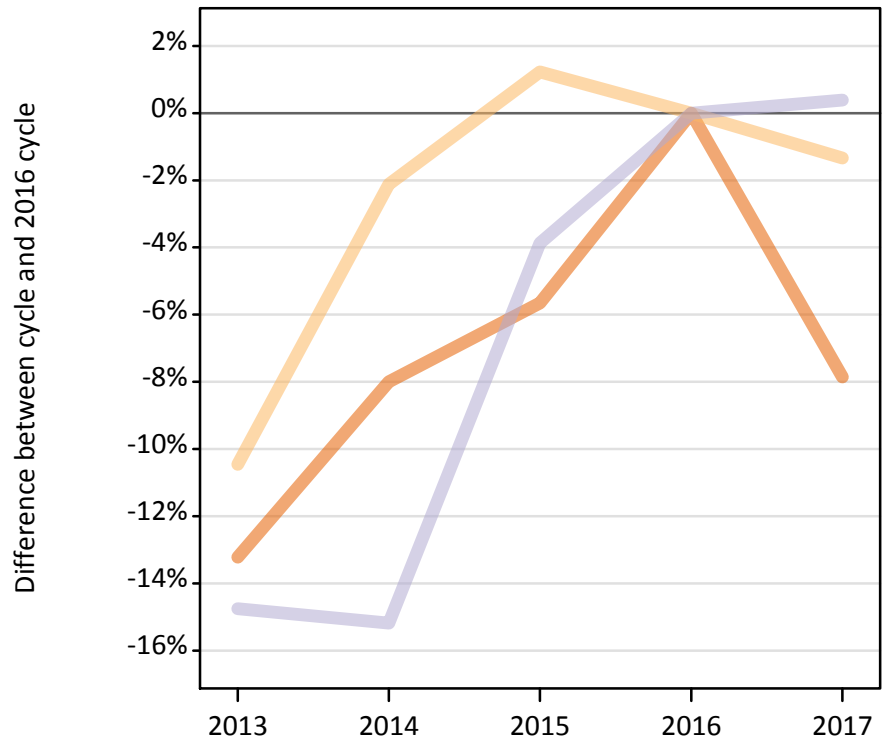
Difference between cycle and 2016 cycle

Domicile of applicant and tariff group of provider		2013	2014	2015	2016	2017
Northern Ireland	1. Lower tariff	-7%	-3%	-1%	0%	-6%
	2. Medium tariff	-1%	-3%	-1%	0%	-5%
	3. Higher tariff	-5%	-12%	-5%	0%	-2%
	All	-4%	-4%	-2%	0%	-5%

F.5.37 Applications by domicile and tariff group of provider : Scotland

Difference between cycle and 2016 cycle

- 1. Lower tariff
- 2. Medium tariff
- 3. Higher tariff



F.5.38 Applications by domicile and tariff group of provider : Scotland

Domicile of applicant and tariff group of provider		2013	2014	2015	2016	2017
Scotland	1. Lower tariff	2,440	2,590	2,660	2,810	2,590
	2. Medium tariff	77,930	85,180	88,100	87,030	85,870
	3. Higher tariff	88,570	88,130	99,880	103,900	104,310
	All	168,940	175,900	190,630	193,750	192,770

F.5.39 Applications by domicile and tariff group of provider : Scotland

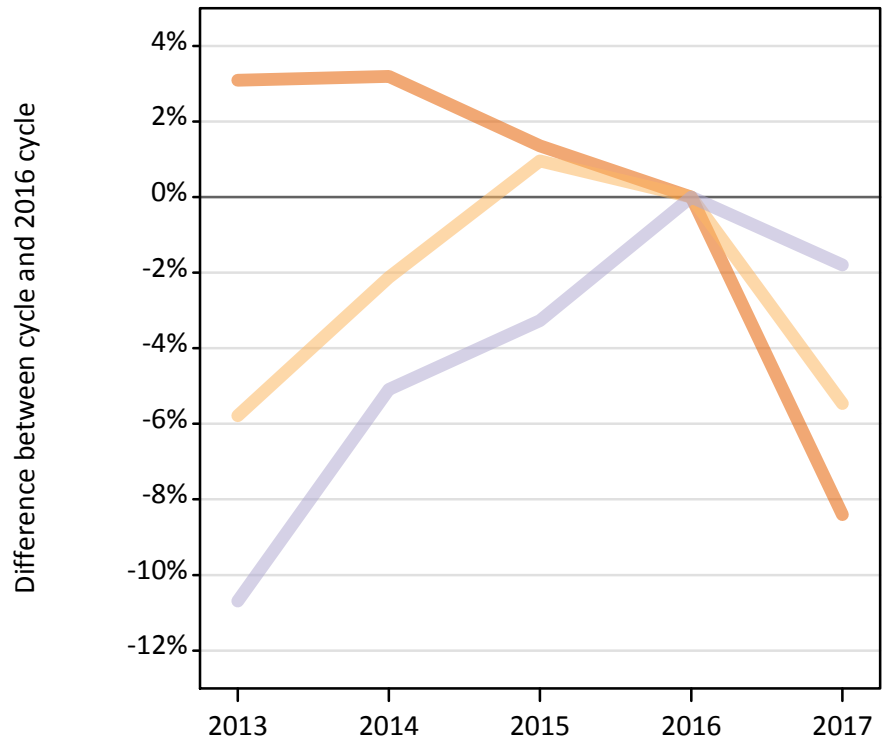
Difference between cycle and 2016 cycle

Domicile of applicant and tariff group of provider		2013	2014	2015	2016	2017
Scotland	1. Lower tariff	-13%	-8%	-6%	0%	-8%
	2. Medium tariff	-10%	-2%	1%	0%	-1%
	3. Higher tariff	-15%	-15%	-4%	0%	0%
	All	-13%	-9%	-2%	0%	-1%

F.5.40 Applications by domicile and tariff group of provider : Wales

Difference between cycle and 2016 cycle

- 1. Lower tariff
- 2. Medium tariff
- 3. Higher tariff



F.5.41 Applications by domicile and tariff group of provider : Wales

Domicile of applicant and tariff group of provider		2013	2014	2015	2016	2017
Wales	1. Lower tariff	36,200	36,240	35,590	35,110	32,170
	2. Medium tariff	27,720	28,800	29,710	29,420	27,820
	3. Higher tariff	24,770	26,320	26,830	27,740	27,240
	All	88,690	91,360	92,120	92,270	87,220

F.5.42 Applications by domicile and tariff group of provider : Wales

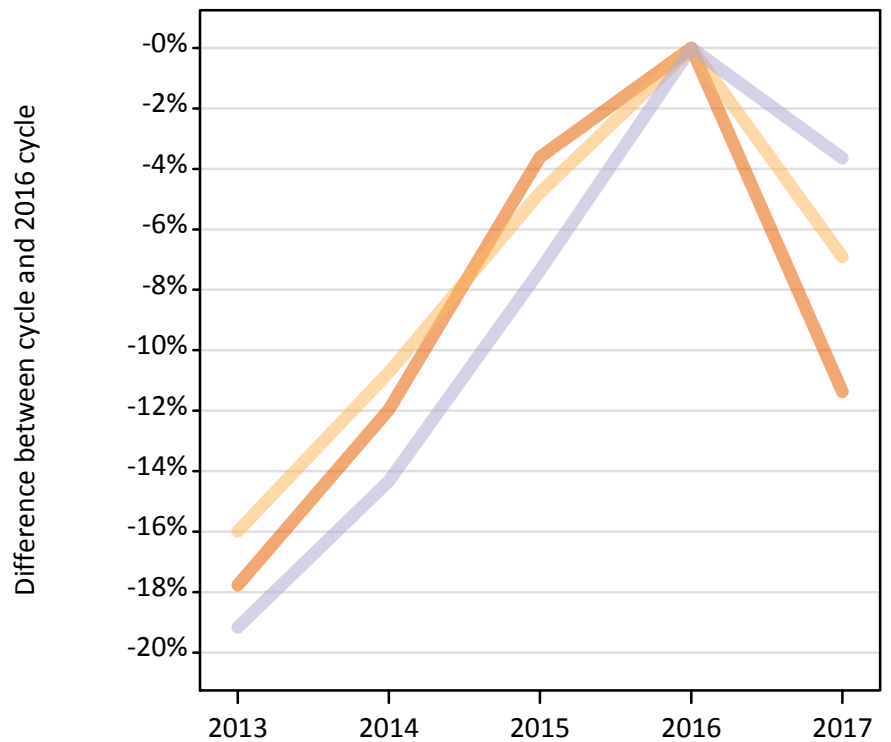
Difference between cycle and 2016 cycle

Domicile of applicant and tariff group of provider		2013	2014	2015	2016	2017
Wales	1. Lower tariff	3%	3%	1%	0%	-8%
	2. Medium tariff	-6%	-2%	1%	0%	-5%
	3. Higher tariff	-11%	-5%	-3%	0%	-2%
	All	-4%	-1%	-0%	0%	-5%

F.5.43 Applications by domicile and tariff group of provider : EU (excluding UK)

Difference between cycle and 2016 cycle

- 1. Lower tariff
- 2. Medium tariff
- 3. Higher tariff



F.5.44 Applications by domicile and tariff group of provider : EU (excluding UK)

Domicile of applicant and tariff group of provider		2013	2014	2015	2016	2017
EU (excluding UK)	1. Lower tariff	39,920	42,730	46,780	48,540	43,020
	2. Medium tariff	49,030	52,100	55,560	58,360	54,320
	3. Higher tariff	85,930	91,080	98,480	106,310	102,430
	All	174,870	185,910	200,830	213,200	199,770

F.5.45 Applications by domicile and tariff group of provider : EU (excluding UK)

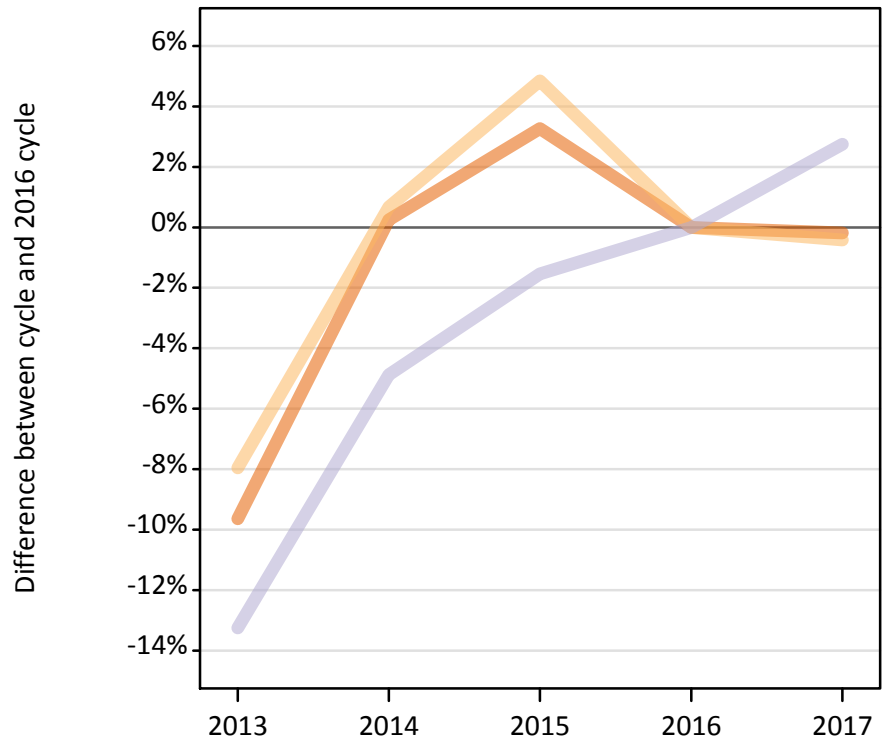
Difference between cycle and 2016 cycle

Domicile of applicant and tariff group of provider		2013	2014	2015	2016	2017
EU (excluding UK)	1. Lower tariff	-18%	-12%	-4%	0%	-11%
	2. Medium tariff	-16%	-11%	-5%	0%	-7%
	3. Higher tariff	-19%	-14%	-7%	0%	-4%
	All	-18%	-13%	-6%	0%	-6%

F.5.46 Applications by domicile and tariff group of provider : Not EU

Difference between cycle and 2016 cycle

- 1. Lower tariff
- 2. Medium tariff
- 3. Higher tariff



F.5.47 Applications by domicile and tariff group of provider : Not EU

Domicile of applicant and tariff group of provider		2013	2014	2015	2016	2017
Not EU	1. Lower tariff	29,160	32,350	33,320	32,270	32,210
	2. Medium tariff	60,700	66,390	69,140	65,950	65,670
	3. Higher tariff	144,130	158,050	163,590	166,140	170,710
	All	233,980	256,780	266,050	264,360	268,590

F.5.48 Applications by domicile and tariff group of provider : Not EU

Difference between cycle and 2016 cycle

Domicile of applicant and tariff group of provider		2013	2014	2015	2016	2017
Not EU	1. Lower tariff	-10%	0%	3%	0%	-0%
	2. Medium tariff	-8%	1%	5%	0%	-0%
	3. Higher tariff	-13%	-5%	-2%	0%	3%
	All	-11%	-3%	1%	0%	2%

F.5.49 Technical notes and definitions

Applicants have been able to submit applications for all 2017 courses since early September.

People who submit their applications to UCAS by the January deadline are considered 'on time' applicants for the large majority of courses offered through UCAS. Some art and design courses have a later deadline of 24 March. Almost all main scheme applications have been received by the 24 March deadline.

Counts of the number of applicants reported have been rounded to the nearest 10 applicants, this may result in instances where totals do not equal the sum of the components. Proportional changes have been rounded to the nearest whole percentage point.

Age

This statistical release uses country-specific age definitions which align with the cut off points for school/college cohorts within the different administrations of the UK. For England and Wales ages are defined on the 31 August, for Northern Ireland on the 1 July and for Scotland on the 28 February the following year. Defining ages in this way matches the assignment of children to school cohorts. For applicants outside of the UK the cohort cut off for England and Wales has been used.

Applicant

A person who has made an application in the UCAS system during the cycle reported (including applications for deferred entry). Records of prior acceptance (RPAs) are excluded.

Application

An application to a course at a provider made by an applicant in the UCAS main scheme. Applicants may make up to five main scheme applications.

Country of provider

An applicant may be counted once for each provider country they have applied to in the main scheme. If an applicant has applied to providers in multiple countries then the applicant is counted once within each country of provider applied to.

This statistical release excludes a small number of applications to a provider based in the EU.

Domicile

Declared area of permanent residence. The Channel Islands and the Isle of Man have been assigned as 'Not EU'.

First time applicant

An applicant that did not apply to the UCAS scheme in the previous cycle.

Main scheme

The main UCAS application scheme through which up to five providers/courses can be applied to. This opens in September and closes to new applications on 30 June the following year.

Reapplicant

An applicant that applied to the UCAS scheme in the previous cycle.

Subject group

The JACS3 classification used to classify courses into subject groups.

Tariff group of provider

Providers are grouped as higher, medium or lower tariff based on their average levels of attainment of their accepted applicants (summarised through UCAS Tariff points) in recent cycles. Each group of providers accounted for around a third of all UK 18 year old acceptances in recent cycles.