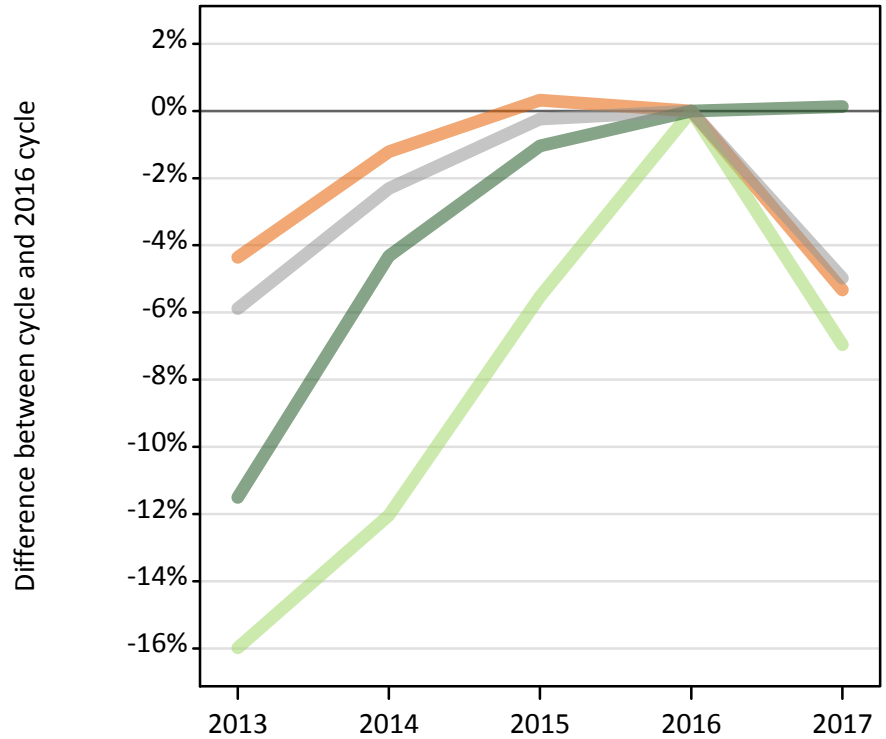


## Applicants by domicile at the 15 January deadline

### D.1.1 Applicants by domicile group

Difference between cycle and 2016 cycle

- UK
- EU (excluding UK)
- Not EU
- All domiciles



### D.1.2 Applicants by domicile group

Domicile group of applicant	2013	2014	2015	2016	2017
UK	474,310	489,940	497,550	495,940	469,490
EU (excluding UK)	37,990	39,780	42,720	45,220	42,070
Not EU	46,510	50,290	52,020	52,560	52,630
All domiciles	558,820	580,000	592,290	593,720	564,190

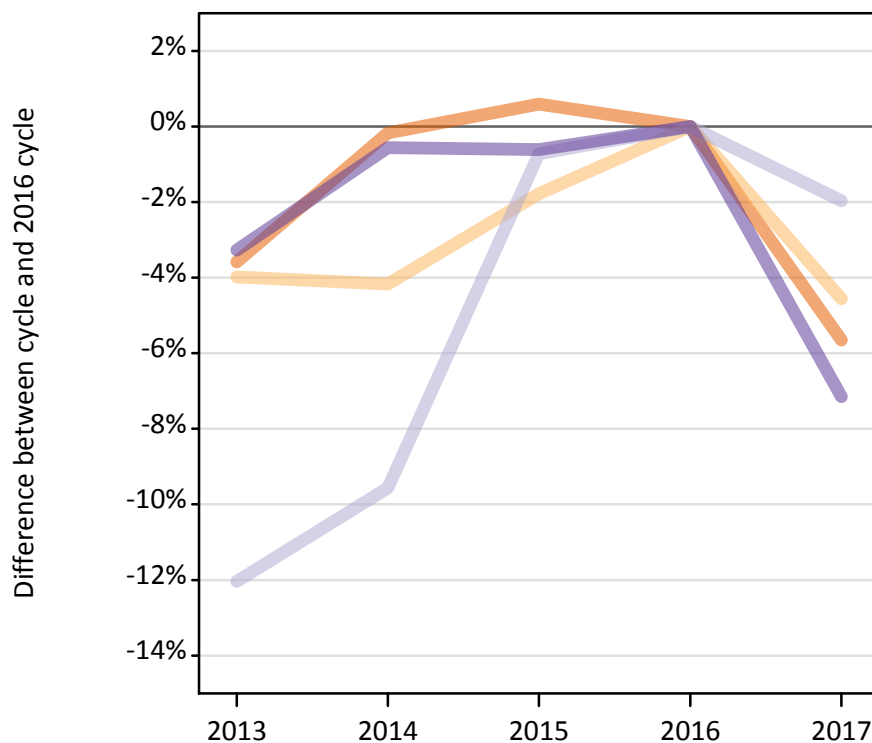
### D.1.3 Applicants by domicile group

Difference between cycle and 2016 cycle

Domicile group of applicant	2013	2014	2015	2016	2017
UK	-4%	-1%	0%	0%	-5%
EU (excluding UK)	-16%	-12%	-6%	0%	-7%
Not EU	-12%	-4%	-1%	0%	0%
All domiciles	-6%	-2%	-0%	0%	-5%

### D.1.4 Applicants by UK country of domicile

Difference between cycle and 2016 cycle



### D.1.5 Applicants by UK country of domicile

Domicile group of applicant	2013	2014	2015	2016	2017
England	394,330	408,300	411,420	408,990	385,870
Northern Ireland	19,590	19,550	20,040	20,400	19,470
Scotland	39,950	41,080	45,100	45,420	44,530
Wales	20,440	21,010	21,000	21,130	19,620
UK	474,310	489,940	497,550	495,940	469,490

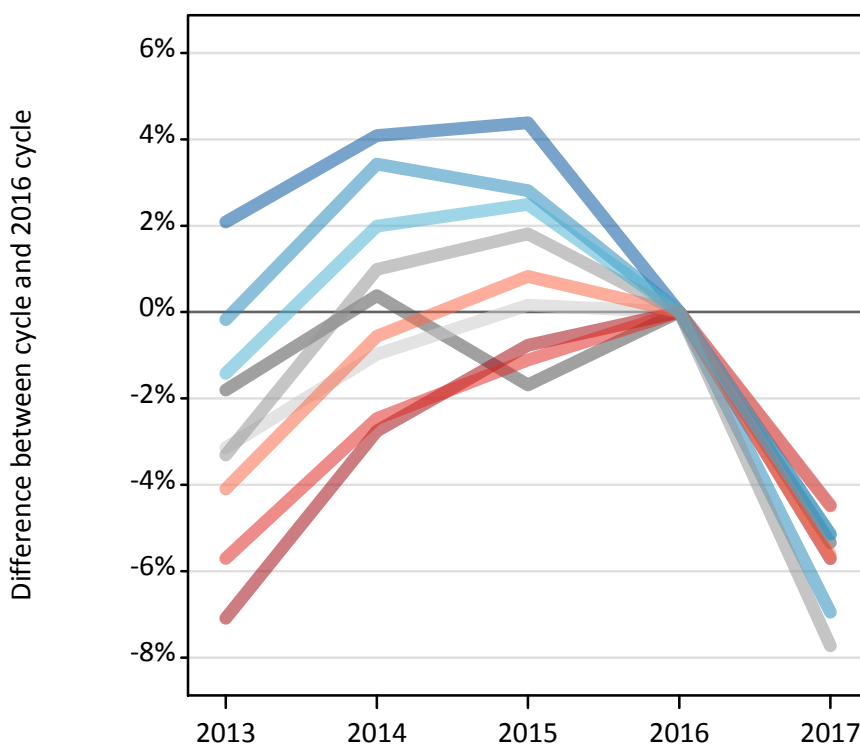
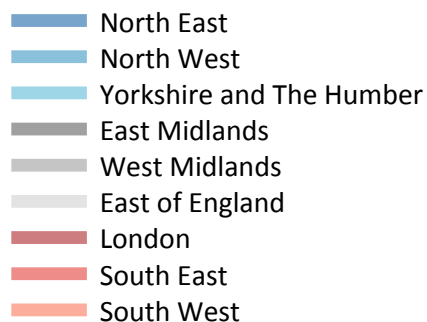
### D.1.6 Applicants by UK country of domicile

Difference between cycle and 2016 cycle

Domicile group of applicant	2013	2014	2015	2016	2017
England	-4%	-0%	1%	0%	-6%
Northern Ireland	-4%	-4%	-2%	0%	-5%
Scotland	-12%	-10%	-1%	0%	-2%
Wales	-3%	-1%	-1%	0%	-7%
UK	-4%	-1%	0%	0%	-5%

### D.1.7 Applicants by English region of domicile

Difference between cycle and 2016 cycle



### D.1.8 Applicants by English region of domicile

English region	2013	2014	2015	2016	2017
North East	17,470	17,810	17,860	17,110	16,230
North West	53,420	55,350	55,010	53,510	49,790
Yorkshire and The Humber	36,210	37,460	37,650	36,730	34,830
East Midlands	30,750	31,430	30,780	31,310	29,640
West Midlands	41,820	43,680	44,040	43,250	39,910
East of England	40,680	41,590	42,070	42,000	40,130
London	75,150	78,660	80,270	80,880	76,270
South East	63,110	65,280	66,190	66,930	63,920
South West	35,730	37,040	37,560	37,250	35,150

### D.1.9 Applicants by English region of domicile

Difference between cycle and 2016 cycle

English region	2013	2014	2015	2016	2017
North East	2%	4%	4%	0%	-5%
North West	-0%	3%	3%	0%	-7%
Yorkshire and The Humber	-1%	2%	2%	0%	-5%
East Midlands	-2%	0%	-2%	0%	-5%
West Midlands	-3%	1%	2%	0%	-8%
East of England	-3%	-1%	0%	0%	-4%
London	-7%	-3%	-1%	0%	-6%
South East	-6%	-2%	-1%	0%	-4%
South West	-4%	-1%	1%	0%	-6%

**D.1.10 Applicants by declared country of domicile**

Selected countries

Declared country of domicile	2013	2014	2015	2016	2017
Angola	50	50	110	100	50
Australia	450	480	510	480	480
Austria	520	540	570	590	520
Azerbaijan	150	190	180	120	90
Bahrain	280	280	250	260	310
Bangladesh	210	210	210	170	170
Belgium	860	920	990	1,000	970
Bermuda	150	170	150	180	160
Botswana	60	90	130	120	120
Brazil	160	190	230	230	200
Brunei	550	650	380	280	240
Bulgaria	2,440	2,160	2,130	2,320	2,080
Canada	1,700	1,690	1,750	1,660	1,490
Cayman Islands	80	110	80	100	110
China	6,900	7,170	8,010	9,000	9,880
Croatia	60	120	190	270	230
Cyprus (European Union)	2,850	2,810	2,780	2,710	2,800
Czech Republic	410	520	680	910	890
Denmark	400	390	410	440	460
Ecuador	30	50	60	150	110
Egypt	380	470	540	610	610
Estonia	550	440	450	420	340
Finland	720	800	900	910	760
France	3,380	3,850	4,340	4,650	4,480
Germany	2,750	2,740	2,910	3,150	2,820
Ghana	140	190	170	170	220
Gibraltar	290	270	270	270	260
Greece	1,990	1,970	1,970	2,040	1,990
Guernsey	280	290	310	320	250
Hong Kong	5,050	5,460	5,260	5,180	5,120
Hungary	720	730	790	880	820
India	2,610	2,870	3,020	3,050	3,290
Indonesia	350	380	480	460	510
Iran	180	170	150	160	200
Ireland	5,450	5,230	5,170	4,750	3,900
Isle of Man	470	480	450	470	490
Israel	110	90	110	110	90
Italy	2,730	3,440	4,120	4,270	3,780
Japan	400	440	390	380	360
Jersey	510	480	490	530	540
Jordan	330	330	330	320	380
Kazakhstan	280	270	270	240	190
Kenya	500	510	510	490	480
Korea (South)	1,110	1,050	1,160	1,260	1,290
Kuwait	240	290	330	330	410

Declared country of domicile	2013	2014	2015	2016	2017
Latvia	480	460	450	500	460
Lebanon	160	180	210	300	260
Lithuania	1,860	1,680	1,520	1,580	1,680
Luxembourg	400	440	420	410	410
Macao	120	150	220	180	240
Malaysia	3,230	4,080	4,210	4,070	3,030
Malta	100	90	90	110	90
Mauritius	250	340	280	290	250
Mexico	110	110	130	150	130
Morocco	220	270	290	270	270
Netherlands	680	710	770	810	820
New Zealand	140	160	160	180	170
Nigeria	1,060	1,120	1,060	920	850
Norway	990	960	990	810	860
Oman	140	160	210	210	210
Pakistan	1,370	1,350	1,390	1,460	1,520
Philippines	100	100	130	110	110
Poland	1,880	2,160	2,400	3,060	3,000
Portugal	680	710	900	930	1,080
Qatar	270	230	270	310	290
Romania	2,110	2,340	2,930	3,100	2,630
Russia	820	1,000	1,130	910	800
Saudi Arabia	560	580	600	600	580
Serbia	120	100	90	120	110
Singapore	3,460	3,730	3,560	3,210	3,060
Slovakia	400	530	520	730	540
Slovenia	120	140	150	150	140
South Africa	220	250	310	340	530
Spain	1,770	2,140	2,520	2,940	2,940
Sri Lanka	250	240	190	190	230
Sweden	1,360	1,370	1,300	1,220	1,030
Switzerland	1,010	1,030	1,150	1,170	1,130
Taiwan	230	270	300	280	320
Tanzania	110	140	120	100	90
Thailand	550	630	650	660	660
Trinidad and Tobago	150	140	180	190	160
Turkey	450	490	510	640	790
Uganda	100	90	90	110	110
Ukraine	250	270	230	200	190
United Arab Emirates	830	1,000	1,150	1,230	1,550
United States of America	2,710	2,930	3,080	3,260	3,220
Vietnam	520	460	370	300	310
Zambia	100	100	100	90	110
Zimbabwe	220	240	260	280	280

**D.1.11 Applicants by declared country of domicile**

Selected countries, difference between cycle and 2016 cycle

Declared country of domicile	2013	2014	2015	2016	2017
Angola	-48%	-46%	17%	0%	-53%
Australia	-6%	1%	6%	0%	-0%
Austria	-12%	-8%	-4%	0%	-12%
Azerbaijan	21%	61%	47%	0%	-23%
Bahrain	8%	10%	-3%	0%	23%
Bangladesh	25%	28%	27%	0%	2%
Belgium	-14%	-8%	-1%	0%	-3%
Bermuda	-14%	-7%	-14%	0%	-13%
Botswana	-52%	-23%	15%	0%	3%
Brazil	-29%	-17%	-1%	0%	-13%
Brunei	97%	135%	35%	0%	-13%
Bulgaria	5%	-7%	-8%	0%	-10%
Canada	2%	2%	5%	0%	-10%
Cayman Islands	-18%	4%	-17%	0%	7%
China	-23%	-20%	-11%	0%	10%
Croatia	-78%	-55%	-31%	0%	-14%
Cyprus (European Union)	5%	4%	3%	0%	3%
Czech Republic	-55%	-43%	-25%	0%	-2%
Denmark	-10%	-12%	-7%	0%	5%
Ecuador	-77%	-63%	-57%	0%	-22%
Egypt	-37%	-22%	-12%	0%	-1%
Estonia	31%	6%	7%	0%	-17%
Finland	-20%	-12%	-1%	0%	-16%
France	-27%	-17%	-7%	0%	-4%
Germany	-12%	-13%	-8%	0%	-10%
Ghana	-22%	6%	-4%	0%	25%
Gibraltar	7%	0%	0%	0%	-3%
Greece	-2%	-4%	-3%	0%	-3%
Guernsey	-10%	-8%	-3%	0%	-20%
Hong Kong	-3%	5%	1%	0%	-1%
Hungary	-18%	-17%	-10%	0%	-6%
India	-15%	-6%	-1%	0%	8%
Indonesia	-24%	-18%	3%	0%	9%
Iran	8%	6%	-10%	0%	21%
Ireland	15%	10%	9%	0%	-18%
Isle of Man	-1%	1%	-6%	0%	2%
Israel	5%	-19%	-4%	0%	-21%
Italy	-36%	-19%	-3%	0%	-11%
Japan	5%	16%	2%	0%	-5%
Jersey	-3%	-10%	-7%	0%	2%
Jordan	2%	3%	2%	0%	19%
Kazakhstan	18%	12%	11%	0%	-18%
Kenya	4%	5%	5%	0%	-2%
Korea (South)	-12%	-16%	-7%	0%	3%
Kuwait	-29%	-14%	-2%	0%	23%

Declared country of domicile	2013	2014	2015	2016	2017
Latvia	-4%	-9%	-9%	0%	-7%
Lebanon	-46%	-39%	-29%	0%	-13%
Lithuania	18%	6%	-4%	0%	7%
Luxembourg	-3%	7%	2%	0%	-1%
Macao	-35%	-16%	18%	0%	30%
Malaysia	-21%	0%	3%	0%	-26%
Malta	-13%	-22%	-19%	0%	-15%
Mauritius	-14%	18%	-4%	0%	-13%
Mexico	-27%	-27%	-16%	0%	-18%
Morocco	-20%	-0%	8%	0%	0%
Netherlands	-16%	-12%	-5%	0%	1%
New Zealand	-26%	-14%	-10%	0%	-9%
Nigeria	15%	22%	15%	0%	-7%
Norway	22%	18%	21%	0%	5%
Oman	-30%	-20%	1%	0%	3%
Pakistan	-6%	-8%	-5%	0%	4%
Philippines	-11%	-11%	15%	0%	-1%
Poland	-38%	-29%	-21%	0%	-2%
Portugal	-26%	-24%	-4%	0%	16%
Qatar	-15%	-28%	-14%	0%	-7%
Romania	-32%	-24%	-5%	0%	-15%
Russia	-10%	11%	25%	0%	-11%
Saudi Arabia	-6%	-3%	0%	0%	-2%
Serbia	1%	-15%	-24%	0%	-4%
Singapore	8%	16%	11%	0%	-5%
Slovakia	-44%	-28%	-28%	0%	-25%
Slovenia	-21%	-3%	5%	0%	-5%
South Africa	-35%	-26%	-10%	0%	54%
Spain	-40%	-27%	-14%	0%	0%
Sri Lanka	32%	29%	1%	0%	23%
Sweden	11%	12%	6%	0%	-16%
Switzerland	-14%	-12%	-2%	0%	-3%
Taiwan	-19%	-5%	8%	0%	16%
Tanzania	11%	35%	15%	0%	-10%
Thailand	-16%	-4%	-0%	0%	0%
Trinidad and Tobago	-20%	-23%	-1%	0%	-15%
Turkey	-30%	-24%	-20%	0%	24%
Uganda	-7%	-12%	-12%	0%	0%
Ukraine	24%	31%	13%	0%	-6%
United Arab Emirates	-33%	-19%	-6%	0%	26%
United States of America	-17%	-10%	-6%	0%	-1%
Vietnam	74%	51%	22%	0%	4%
Zambia	5%	3%	6%	0%	23%
Zimbabwe	-22%	-12%	-6%	0%	1%

## D.1.12 Technical notes and definitions

Applicants have been able to submit applications for all 2017 courses since early September.

Applicants who submit their applications to UCAS by the January deadline are considered as 'on time' applicants for the large majority of courses offered through UCAS.

This statistical release covers all Main Scheme applicants who submit their applications to UCAS by the January deadline, including those who have applied for courses with a 15 October deadline. Counts of RPAs (records of prior acceptance) are not included.

Counts of the number of applicants reported have been rounded to the nearest 10 applicants, this may result in instances where totals do not equal the sum of the components. Proportional changes have been rounded to the nearest whole percentage point.

### Age

This statistical release uses country-specific age definitions which align with the cut off points for school/college cohorts within the different administrations of the UK. For England and Wales ages are defined on the 31 August, for Northern Ireland on the 1 July and for Scotland on the 28 February the following year. Defining ages in this way matches the assignment of children to school cohorts. For applicants outside of the UK the cohort cut off for England and Wales has been used.

### Applicant

A person who has made an application in the UCAS system during the cycle reported (including applications for deferred entry). Records of prior acceptance (RPAs) are excluded.

### Application

An application to a course at a provider made by an applicant in the UCAS main scheme. Applicants may make up to five main scheme applications.

### Country of provider

An applicant may be counted once for each provider country they have applied to in the main scheme. If an applicant has applied to providers in multiple countries then the applicant is counted once within each country of provider applied to.

This statistical release excludes a small number of applications to a provider based in the EU.

### Domicile

Declared area of permanent residence. The Channel Islands and the Isle of Man have been assigned as 'Not EU'.

### First time applicant

An applicant that did not apply to the UCAS scheme in the previous cycle.

### Main scheme

The main UCAS application scheme through which up to five providers/courses can be applied to. This opens in September and closes to new applications on 30 June the following year.

### Reapplicant

An applicant that applied to the UCAS scheme in the previous cycle.

### Subject group

The JACS3 classification used to classify courses into subject groups.

### Tariff group of provider

Providers are grouped as higher, medium or lower tariff based on their average levels of attainment of their accepted applicants (summarised through UCAS Tariff points) in recent cycles. Each group of providers accounted for around a third of all UK 18 year old acceptances in recent cycles.