

## Y75 York St John University

**Cycle years:** 2011 - 2016

**Cycle Reference Point:** End of Cycle

**Applicant coverage:** UK domiciled

**Reporting groups:** Sex, POLAR3, ethnic group

**Applicant statistics:** June deadline applicants, placed June deadline applicants, all placed applicants, June deadline applicants per 10,000 population, placed June deadline applicants per 10,000 population, all placed applicants per 10,000 population

**Application statistics:** June deadline applications, offers, offer rate, average offer rate, percentage point difference between offer rate and average offer rate, contribution of group to the average offer rate

**Non-disclosure controls:** To avoid the disclosure of information about any individual the following measures are taken

- Applicants, placed applicants, applications and offers are rounded to the nearest 5.
- Applicants/placed applicants per 10,000 population figures are reported as 0 if the applicant/placed applicant figures are rounded to 0.
- All statistics related to the offer rate are not reported when the number of applications for a group is less than 10. The percentage point difference between the offer rate and the average offer rate is not reported when the number of applications for a group is less than 50.
- Offer rates are reported as 0% if there are fewer than 5 offers, and 100% if the number of offers is within 5 of the number of applications. When the offer rate is reported as 0% or 100%, it is reported in italics.

### Contents:

18 year old applicants:	P.1
18 year old applications:	P.2
18 year old applicants by sex:	P.3
18 year old applications by sex:	P.4
18 year old applicants by POLAR3 quintile:	P.7
18 year old applications by POLAR3 quintile:	P.8
18 year old applicants by ethnic group:	P.11
18 year old applications by ethnic group:	P.12
Applicants (all ages):	P.15
Applications (all ages):	P.16
Applicants (all ages) by sex:	P.17
Applications (all ages) by sex:	P.18
Applicants (all ages) by POLAR3 quintile:	P.19
Applications (all ages) by POLAR3 quintile:	P.20
Applicants (all ages) by ethnic group:	P.21
Applications (all ages) by ethnic group:	P.22

## P.1 18 year old applicants

Statistic	2011	2012	2013	2014	2015	2016
June deadline applicants	4,995	5,885	5,890	5,220	4,725	5,380
Placed June deadline applicants	765	940	1,020	970	825	1,275
All placed applicants	985	1,040	1,175	1,085	940	1,375
June deadline applicants per 10,000 population	64.9	76.1	77.4	69.3	61.7	71.8
Placed June deadline applicants per 10,000	9.9	12.1	13.4	12.9	10.8	17.0
All placed applicants per 10,000 population	12.8	13.5	15.4	14.4	12.3	18.4

## P.2 18 year old applications

Statistic	2011	2012	2013	2014	2015	2016
June deadline applications	5,220	6,130	6,125	5,455	4,870	5,605
Offers	2,665	3,800	4,455	4,455	4,005	4,415
Offer rate	51.1%	62.0%	72.8%	81.6%	82.2%	78.7%

### P.3 18 year old applicants by sex

Statistic	Sex	2011	2012	2013	2014	2015	2016
June deadline applicants	Men	1,485	1,820	1,840	1,715	1,410	1,510
	Women	3,515	4,065	4,050	3,505	3,315	3,870
Placed June deadline applicants	Men	205	290	340	275	220	345
	Women	560	650	680	690	605	930
All placed applicants	Men	285	320	390	310	250	375
	Women	695	720	785	775	690	1,000
June deadline applicants per 10,000 population	Men	37.7	45.9	47.1	44.3	36.0	39.3
	Women	93.3	107.8	109.3	95.8	88.7	105.9
Placed June deadline applicants per 10,000 population	Men	5.3	7.3	8.8	7.2	5.6	9.0
	Women	14.8	17.2	18.3	18.9	16.2	25.5
All placed applicants per 10,000 population	Men	7.3	8.1	10.0	8.0	6.4	9.8
	Women	18.5	19.1	21.1	21.1	18.5	27.4

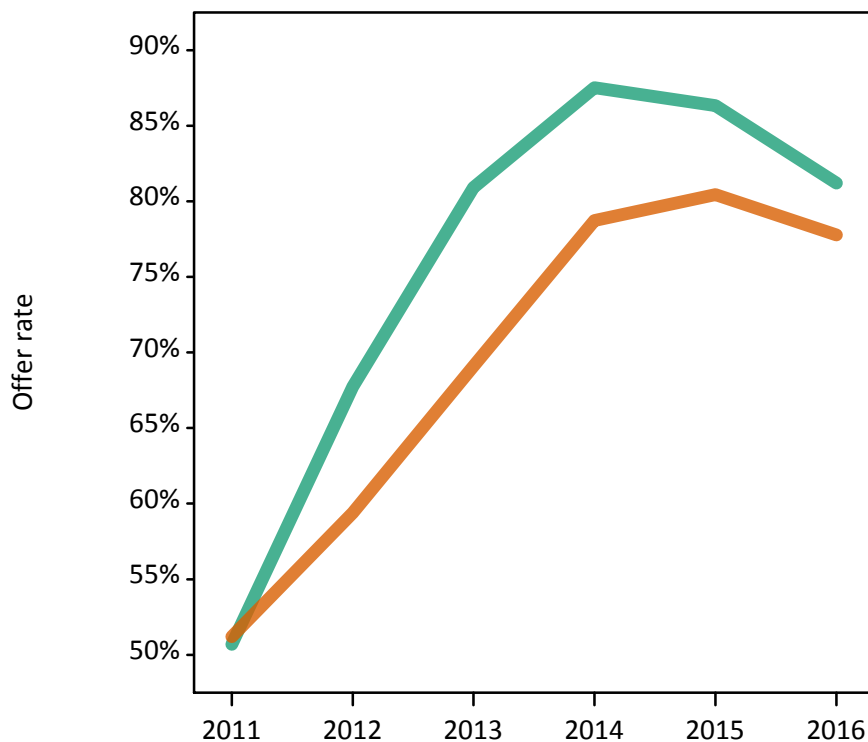
### P.4 18 year old applications by sex

Statistic	Sex	2011	2012	2013	2014	2015	2016
June deadline applications	Men	1,570	1,905	1,915	1,805	1,455	1,575
	Women	3,650	4,220	4,210	3,655	3,415	4,030
Offers	Men	795	1,290	1,550	1,580	1,260	1,280
	Women	1,870	2,510	2,910	2,875	2,745	3,135
Offer rate	Men	50.7%	67.8%	80.9%	87.5%	86.3%	81.2%
	Women	51.2%	59.4%	69.1%	78.7%	80.5%	77.8%
Average offer rate	Men	51.1%	68.3%	80.6%	88.4%	86.6%	82.3%
	Women	51.0%	59.1%	69.3%	78.3%	80.3%	77.3%
Percentage point difference between offer rate and average offer rate	Men	-0.4	-0.6	0.3	-0.8	-0.3	-1.1
	Women	0.2	0.3	-0.2	0.4	0.1	0.4
Contribution of group to the average offer rate	Men	0.499	0.518	0.482	0.525	0.489	0.482
	Women	0.784	0.782	0.765	0.766	0.782	0.798

### P.5 18 year old offer rate by sex

Note: The line for a group is not plotted when that group made fewer than 10 applications in any of the years from 2011-2016.

Men  
Women



### P.6 Percentage point difference between 18 year old offer rate and average offer rate by sex

Note: The line for a group is not plotted when that group made fewer than 50 applications in any of the years from 2011-2016.

Men  
Women



## P.7 18 year old applicants by POLAR3 quintile

Statistic	POLAR3 quintile	2011	2012	2013	2014	2015	2016
June deadline applicants	Quintile 1	745	930	950	965	880	1,055
	Quintile 2	910	1,050	1,185	995	895	1,060
	Quintile 3	1,015	1,205	1,195	1,045	960	1,070
	Quintile 4	1,155	1,350	1,260	1,130	1,020	1,120
	Quintile 5	1,165	1,345	1,295	1,065	960	1,065
Placed June deadline applicants	Quintile 1	85	145	170	170	130	240
	Quintile 2	140	160	190	160	175	230
	Quintile 3	160	195	225	215	155	270
	Quintile 4	185	220	225	225	185	275
	Quintile 5	195	225	210	200	175	260
All placed applicants	Quintile 1	115	155	190	190	155	260
	Quintile 2	175	180	215	185	200	245
	Quintile 3	210	215	255	240	175	285
	Quintile 4	235	240	265	255	210	295
	Quintile 5	250	250	250	215	195	285
June deadline applicants per 10,000 population	Quintile 1	52.0	65.1	68.0	69.4	63.0	78.1
	Quintile 2	60.5	69.9	80.6	68.1	60.3	73.3
	Quintile 3	66.0	78.1	78.2	69.6	62.6	71.2
	Quintile 4	73.6	85.1	80.5	73.4	65.2	72.4
	Quintile 5	70.5	80.2	78.3	65.4	57.3	64.5
Placed June deadline applicants per 10,000 population	Quintile 1	6.1	10.0	12.1	12.1	9.4	17.9
	Quintile 2	9.3	10.5	13.0	10.9	11.9	15.8
	Quintile 3	10.3	12.5	14.9	14.4	10.0	18.0
	Quintile 4	11.9	13.8	14.3	14.5	11.9	17.7
	Quintile 5	11.8	13.3	12.6	12.2	10.4	15.7
All placed applicants per 10,000 population	Quintile 1	7.9	10.9	13.8	13.7	11.1	19.1
	Quintile 2	11.6	12.1	14.5	12.6	13.4	17.0
	Quintile 3	13.6	14.1	16.7	15.8	11.5	19.1
	Quintile 4	14.9	15.1	17.0	16.4	13.4	19.1
	Quintile 5	15.2	14.8	15.0	13.3	11.7	17.4

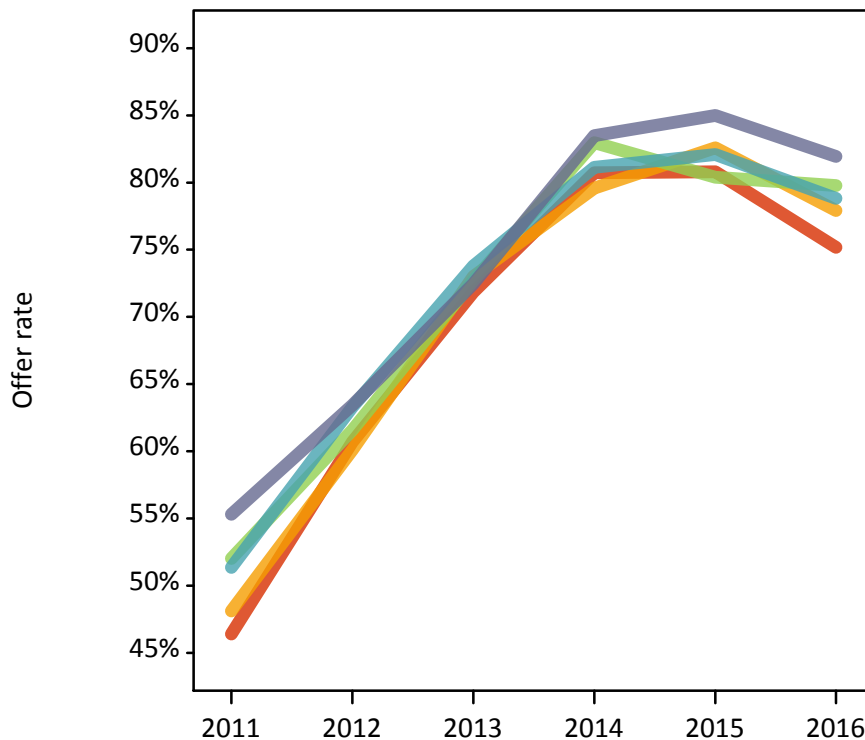
## P.8 18 year old applications by POLAR3 quintile

Statistic	POLAR3 quintile	2011	2012	2013	2014	2015	2016
June deadline applications	Quintile 1	780	975	985	1,015	910	1,090
	Quintile 2	950	1,090	1,250	1,045	925	1,110
	Quintile 3	1,065	1,260	1,245	1,110	990	1,115
	Quintile 4	1,215	1,395	1,305	1,165	1,050	1,165
	Quintile 5	1,210	1,400	1,330	1,110	985	1,105
Offers	Quintile 1	360	595	710	820	735	820
	Quintile 2	455	655	910	830	765	865
	Quintile 3	555	775	905	920	795	890
	Quintile 4	625	885	965	945	860	920
	Quintile 5	670	890	965	925	840	905
Offer rate	Quintile 1	46.4%	60.7%	71.8%	80.7%	80.8%	75.2%
	Quintile 2	48.1%	60.1%	73.0%	79.6%	82.6%	77.9%
	Quintile 3	52.0%	61.6%	72.7%	83.0%	80.4%	79.8%
	Quintile 4	51.4%	63.3%	73.8%	81.1%	82.1%	78.8%
	Quintile 5	55.3%	63.4%	72.5%	83.5%	85.0%	81.9%
Average offer rate	Quintile 1	48.5%	61.8%	73.2%	82.2%	81.9%	76.7%
	Quintile 2	49.7%	61.0%	73.1%	81.3%	83.4%	79.0%
	Quintile 3	51.9%	63.0%	73.3%	81.8%	80.2%	78.3%
	Quintile 4	51.4%	63.3%	72.3%	80.1%	81.9%	79.4%
	Quintile 5	52.8%	60.6%	72.3%	82.8%	83.7%	80.2%
Percentage point difference between offer rate and average offer rate	Quintile 1	-2.1	-1.1	-1.3	-1.4	-1.0	-1.5
	Quintile 2	-1.6	-0.9	-0.1	-1.7	-0.8	-1.1
	Quintile 3	0.2	-1.4	-0.6	1.2	0.2	1.5
	Quintile 4	-0.0	-0.0	1.5	1.0	0.2	-0.6
	Quintile 5	2.5	2.8	0.2	0.7	1.3	1.7
Contribution of group to the average offer rate	Quintile 1	0.238	0.235	0.227	0.272	0.264	0.281
	Quintile 2	0.252	0.235	0.258	0.261	0.260	0.269
	Quintile 3	0.270	0.271	0.251	0.271	0.267	0.272
	Quintile 4	0.295	0.290	0.262	0.282	0.282	0.285
	Quintile 5	0.312	0.296	0.289	0.286	0.284	0.289

### P.9 18 year old offer rate by POLAR3 quintile

Note: The line for a group is not plotted when that group made fewer than 10 applications in any of the years from 2011-2016.

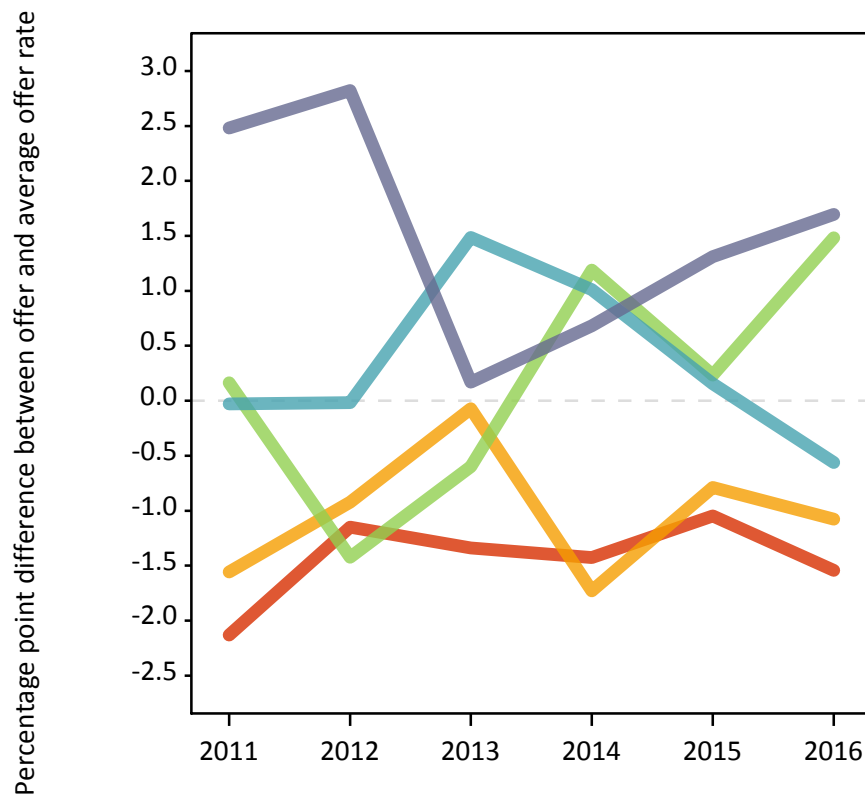
- Quintile 1
- Quintile 2
- Quintile 3
- Quintile 4
- Quintile 5



### P.10 Percentage point difference between 18 year old offer rate and average offer rate by POLAR3 quintile

Note: The line for a group is not plotted when that group made fewer than 50 applications in any of the years from 2011-2016.

- Quintile 1
- Quintile 2
- Quintile 3
- Quintile 4
- Quintile 5



## P.11 18 year old applicants by ethnic group

Statistic	Ethnic group	2011	2012	2013	2014	2015	2016
June deadline applicants	Asian	85	125	150	140	135	135
	Black	30	50	55	50	40	50
	Mixed	75	110	105	85	75	110
	White	4,790	5,575	5,565	4,930	4,450	5,060
	Other	5	15	10	5	20	15
Placed June deadline applicants	Asian	5	10	15	10	20	20
	Black	0	5	10	5	5	5
	Mixed	10	15	15	10	10	30
	White	745	905	985	935	790	1,215
	Other	0	0	0	5	5	0
All placed applicants	Asian	15	15	15	10	20	25
	Black	5	5	10	5	5	5
	Mixed	15	20	20	15	10	35
	White	950	995	1,130	1,045	900	1,310
	Other	0	0	0	5	5	0
June deadline applicants per 10,000 population	Asian	13.3	19.6	22.4	20.6	18.8	18.9
	Black	11.3	17.8	19.2	16.2	12.3	16.0
	Mixed	31.0	42.6	38.8	29.5	24.3	35.6
	White	74.0	86.3	88.4	79.9	71.4	83.6
	Other	8.6	17.0	9.9	7.5	18.7	14.1
Placed June deadline applicants per 10,000 population	Asian	1.1	1.7	2.1	1.8	2.7	2.8
	Black	0.0	1.4	2.7	1.6	0.9	2.2
	Mixed	3.7	5.8	5.2	4.2	2.9	9.9
	White	11.5	14.0	15.6	15.2	12.6	20.1
	Other	0.0	0.0	0.0	3.2	5.2	0.0
All placed applicants per 10,000 population	Asian	2.2	2.5	2.4	1.8	3.0	3.2
	Black	1.1	2.1	3.0	2.0	0.9	2.2
	Mixed	6.2	8.4	7.0	4.5	3.6	10.5
	White	14.6	15.4	17.9	17.0	14.4	21.6
	Other	0.0	0.0	0.0	3.2	6.2	0.0



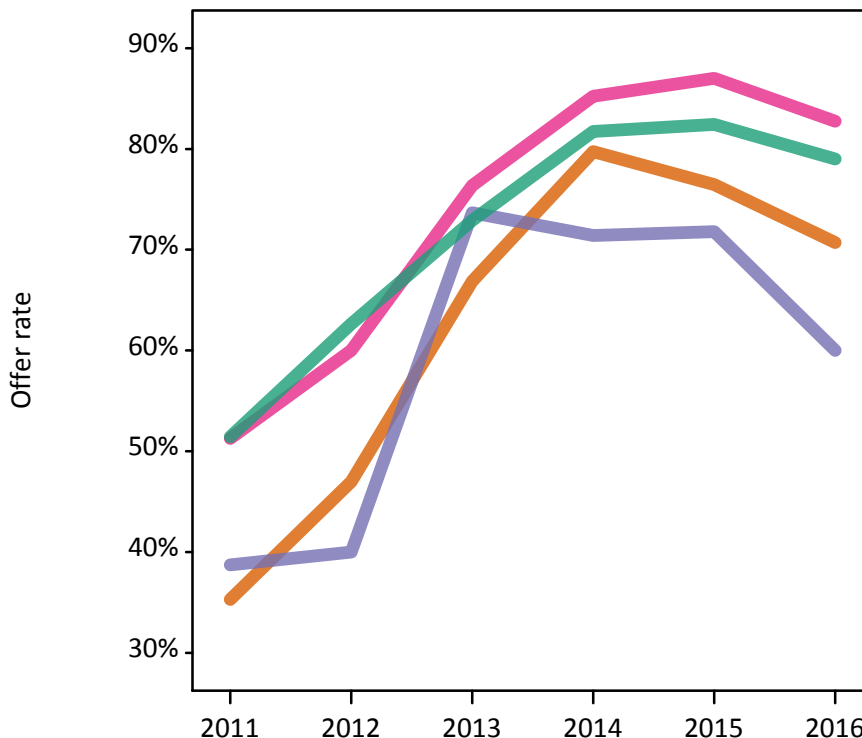
## P.12 18 year old applications by ethnic group

Statistic	Ethnic group	2011	2012	2013	2014	2015	2016
June deadline applications	Asian	85	130	155	150	135	140
	Black	30	50	55	50	40	50
	Mixed	80	115	110	90	75	115
	White	5,010	5,810	5,785	5,155	4,590	5,275
	Other	5	15	10	5	20	15
Offers	Asian	30	60	105	120	105	100
	Black	10	20	40	35	30	30
	Mixed	40	70	85	75	65	95
	White	2,580	3,640	4,220	4,215	3,780	4,170
	Other	0	5	5	5	15	15
Offer rate	Asian	35.3%	47.0%	66.9%	79.7%	76.5%	70.7%
	Black	38.7%	40.0%	73.7%	71.4%	71.8%	60.0%
	Mixed	51.3%	60.0%	76.4%	85.2%	87.0%	82.8%
	White	51.4%	62.6%	72.9%	81.7%	82.4%	79.0%
	Other	N/A	33.3%	N/A	N/A	73.7%	100.0%
Average offer rate	Asian	41.9%	53.3%	70.9%	83.1%	78.0%	76.0%
	Black	43.8%	56.7%	72.6%	82.1%	78.6%	74.0%
	Mixed	57.9%	60.6%	77.3%	86.3%	88.7%	79.0%
	White	51.2%	62.3%	72.8%	81.5%	82.2%	78.8%
	Other	N/A	51.2%	N/A	N/A	83.6%	86.6%
Percentage point difference between offer rate and average offer rate	Asian	-6.6	-6.3	-4.0	-3.4	-1.5	-5.3
	Black	N/A	-16.7	1.1	N/A	N/A	-14.0
	Mixed	-6.6	-0.6	-0.9	-1.1	-1.7	3.8
	White	0.3	0.4	0.2	0.3	0.2	0.2
	Other	N/A	N/A	N/A	N/A	N/A	N/A
Contribution of group to the average offer rate	Asian	0.155	0.120	0.134	0.111	0.159	0.126
	Black	0.128	0.124	0.097	0.110	0.152	0.082
	Mixed	0.100	0.109	0.072	0.087	0.120	0.135
	White	0.965	0.954	0.950	0.950	0.950	0.948
	Other	N/A	0.075	N/A	N/A	0.075	0.126

**P.13 18 year old offer rate by ethnic group**

Note: The line for a group is not plotted when that group made fewer than 10 applications in any of the years from 2011-2016.

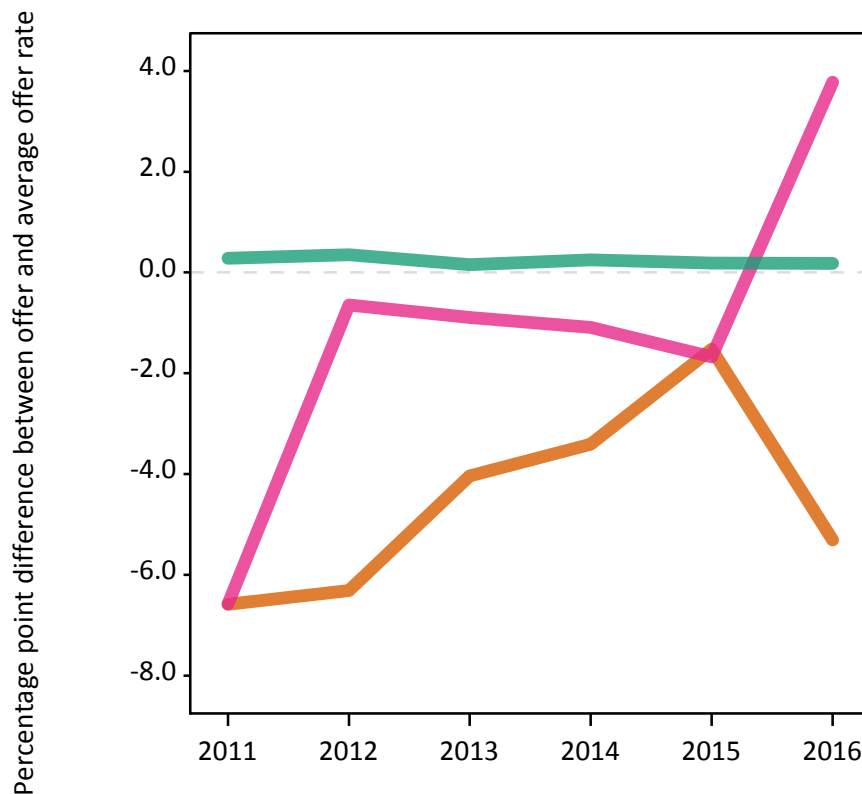
- Asian
- Black
- Mixed
- White
- Other



**P.14 Percentage point difference between 18 year old offer rate and average offer rate by ethnic group**

Note: The line for a group is not plotted when that group made fewer than 50 applications in any of the years from 2011-2016.

- Asian
- Black
- Mixed
- White
- Other



### P.15 Applicants (all ages)

Statistic	2011	2012	2013	2014	2015	2016
June deadline applicants	7,965	8,895	9,005	8,075	7,315	8,120
Placed June deadline applicants	1,140	1,405	1,555	1,500	1,310	1,780
All placed applicants	1,465	1,605	1,835	1,705	1,540	1,980

### P.16 Applications (all ages)

Statistic	2011	2012	2013	2014	2015	2016
June deadline applications	8,430	9,370	9,420	8,520	7,615	8,555
Offers	3,755	5,300	6,405	6,460	5,750	6,100
Offer rate	44.6%	56.6%	68.0%	75.8%	75.5%	71.3%

### P.17 Applicants (all ages) by sex

Statistic	Sex	2011	2012	2013	2014	2015	2016
June deadline applicants	Men	2,665	3,040	3,150	2,940	2,420	2,510
	Women	5,300	5,855	5,850	5,135	4,895	5,615
Placed June deadline applicants	Men	360	450	570	485	405	520
	Women	780	955	990	1,015	905	1,260
All placed applicants	Men	480	510	670	560	485	595
	Women	985	1,095	1,170	1,145	1,055	1,385

### P.18 Applications (all ages) by sex

Statistic	Sex	2011	2012	2013	2014	2015	2016
June deadline applications	Men	2,845	3,210	3,310	3,120	2,535	2,660
	Women	5,585	6,160	6,105	5,400	5,080	5,895
Offers	Men	1,235	1,900	2,435	2,480	1,950	1,890
	Women	2,525	3,400	3,970	3,980	3,805	4,205
Offer rate	Men	43.4%	59.3%	73.5%	79.5%	76.9%	71.1%
	Women	45.2%	55.2%	65.0%	73.7%	74.9%	71.4%

### P.19 Applicants (all ages) by POLAR3 quintile

Statistic	POLAR3 quintile	2011	2012	2013	2014	2015	2016
June deadline applicants	Quintile 1	1,265	1,515	1,550	1,515	1,380	1,590
	Quintile 2	1,475	1,630	1,775	1,540	1,390	1,645
	Quintile 3	1,635	1,820	1,820	1,625	1,455	1,580
	Quintile 4	1,775	1,945	1,910	1,710	1,535	1,655
	Quintile 5	1,805	1,970	1,935	1,675	1,540	1,625
Placed June deadline applicants	Quintile 1	135	240	270	280	215	315
	Quintile 2	210	255	295	245	270	305
	Quintile 3	250	280	330	325	240	375
	Quintile 4	255	305	325	335	295	405
	Quintile 5	285	320	335	310	280	370
All placed applicants	Quintile 1	175	275	310	315	250	345
	Quintile 2	260	295	345	290	315	355
	Quintile 3	325	320	385	360	290	415
	Quintile 4	330	350	395	380	350	440
	Quintile 5	375	365	395	360	335	420

### P.20 Applications (all ages) by POLAR3 quintile

Statistic	POLAR3 quintile	2011	2012	2013	2014	2015	2016
June deadline applications	Quintile 1	1,335	1,605	1,620	1,600	1,435	1,650
	Quintile 2	1,565	1,720	1,870	1,635	1,455	1,735
	Quintile 3	1,745	1,935	1,905	1,725	1,520	1,670
	Quintile 4	1,890	2,035	1,990	1,790	1,600	1,745
	Quintile 5	1,885	2,065	2,020	1,755	1,590	1,720
Offers	Quintile 1	530	895	1,065	1,190	1,075	1,110
	Quintile 2	655	965	1,270	1,235	1,095	1,200
	Quintile 3	790	1,055	1,295	1,320	1,115	1,210
	Quintile 4	855	1,170	1,375	1,355	1,210	1,270
	Quintile 5	925	1,210	1,390	1,350	1,240	1,290
Offer rate	Quintile 1	39.8%	55.6%	65.8%	74.4%	74.9%	67.2%
	Quintile 2	41.9%	56.2%	67.9%	75.5%	75.5%	69.2%
	Quintile 3	45.3%	54.7%	68.0%	76.3%	73.5%	72.4%
	Quintile 4	45.2%	57.4%	69.1%	75.6%	75.6%	72.7%
	Quintile 5	49.0%	58.6%	68.8%	77.0%	77.8%	75.0%

## P.21 Applicants (all ages) by ethnic group

Statistic	Ethnic group	2011	2012	2013	2014	2015	2016
June deadline applicants	Asian	155	210	270	235	230	255
	Black	85	140	145	120	105	115
	Mixed	135	195	180	175	130	190
	White	7,555	8,305	8,375	7,500	6,800	7,500
	Other	15	35	20	25	25	30
Placed June deadline applicants	Asian	15	20	30	20	25	35
	Black	5	15	15	15	5	10
	Mixed	15	25	25	20	20	45
	White	1,095	1,345	1,485	1,440	1,255	1,675
	Other	0	0	0	5	5	5
All placed applicants	Asian	25	25	40	20	30	40
	Black	10	25	15	15	10	15
	Mixed	25	30	30	25	25	50
	White	1,400	1,520	1,740	1,630	1,470	1,865
	Other	0	0	0	5	5	5

## P.22 Applications (all ages) by ethnic group

Statistic	Ethnic group	2011	2012	2013	2014	2015	2016
June deadline applications	Asian	160	220	275	245	235	265
	Black	90	145	145	120	105	120
	Mixed	140	205	190	185	135	200
	White	8,005	8,750	8,770	7,920	7,090	7,910
	Other	15	35	20	25	25	30
Offers	Asian	60	95	165	170	155	170
	Black	20	50	75	75	50	55
	Mixed	65	115	135	150	105	145
	White	3,605	5,025	6,005	6,045	5,410	5,695
	Other	0	10	10	15	20	20
Offer rate	Asian	37.0%	42.3%	59.2%	69.1%	65.4%	63.9%
	Black	24.2%	32.7%	53.5%	62.0%	46.7%	43.4%
	Mixed	45.1%	55.6%	70.7%	80.0%	77.8%	72.2%
	White	45.0%	57.4%	68.5%	76.3%	76.3%	72.0%
	Other	0.0%	30.6%	57.1%	50.0%	66.7%	66.7%

## Technical Notes and Definitions

### UCAS undergraduate scheme

#### Adjustment

Adjustment allows applicants who have met and exceeded the terms of their conditional firm offer to seek and find a place at another provider whilst keeping their place at their original firm choice provider.

#### Clearing

Clearing is a route for applicants that are not placed and holding no offers to find a place on courses with vacancies.

#### Cycle year

The UCAS application cycle which runs from September to October the following year. For example the 2016 cycle runs from September 2015 through to October 2016.

#### End of cycle

The point in the cycle to which the numbers in this report refer, and the point at which the cycle is closed such that no more applications or offers can be made, and no more applicants can be placed. Numbers reported at the end of cycle exclude information on a small number of applicants who cancelled during the cycle.

#### Extra

Applicants who are unsuccessful in obtaining an offer or decline all offers may be eligible to apply through Extra, where they can apply to one further course at a time. Extra operates from 25 February until early July. It provides applicants who are eligible the possibility of obtaining an offer before exam results are published and Clearing starts.

#### June 30 deadline

The deadline for main scheme applications. Applicants who apply after this date will go directly into Clearing.

#### Record of Prior Acceptance (RPA)

RPA is an acceptance route used when a provider informs UCAS of applicants it has accepted outside of the normal application process (e.g. individuals who have applied directly to the provider).

### Reporting groups

#### Ethnic group

High level grouping of ethnic origin as declared by the applicant: 'White', 'Black', 'Asian', 'Mixed', 'Other', 'Unknown'. Applicants who declare themselves as 'Unknown' ethnic origin are not reported in these tables, but are included in the associated csv data file.

#### POLAR3 quintile

Developed by HEFCE, POLAR3 classifies small areas across the UK into five groups according to their level of young participation in Higher Education. Each of these groups represents around 20 per cent of young people and is ranked from Quintile 1 (areas with the lowest young participation rates, considered as the most disadvantaged) to Quintile 5 (highest young participation rates, considered most advantaged). POLAR3 is based on the participation rates of young people between 2005 and 2009 who entered Higher Education between 2005-06 and 2010-11, therefore is most suitable for applicants aged 19 and under. These groups are assigned using the postcode declared by the applicant at the time of their application. If a UK postcode is invalid, considered unsafe for measurement or there is no link to Census geography possible then the applicant is not assigned to a quintile. Applicants with no POLAR3 quintile are not reported.

#### Sex

Sex as declared by the applicant.

### **SIMD quintile**

Scottish index of multiple deprivation (SIMD) for 2012 identifies small area concentrations of multiple deprivation across all of Scotland, providing a relative measure of deprivation amongst 6505 small areas (data zones) based on 7 socio-economic domains. These small areas are classified into five groups ranked from Quintile 1 (considered the most deprived) to Quintile 5 (considered least deprived), with equal populations in each quintile. Quintiles are assigned using the postcode declared by the applicant, applicants declaring invalid postcodes are classified as 'Not assigned' and are not reported.

SIMD is only defined for applicants domiciled in Scotland, therefore any applicants domiciled outside of Scotland cannot be assigned to an SIMD quintile and so are not reported for this measure.

SIMD is only reported for providers in Scotland. Application and entry rates by SIMD are reported in the 2016 End of Cycle Report and the 2016 cycle January deadline application rate report.

### **Statistics reported in the tables**

#### **All placed applicants**

The number of applicants placed for entry into higher education at the provider through one of their choices, including any choices made through Extra, or via Adjustment, Clearing or RPA.

#### **All placed applicants per 10,000 population**

The number of total UK domiciled 18 year old placed applicants for entry into higher education at the provider divided by the number of UK 18 year olds in the population, multiplied by 10,000. This gives the number of 18 year olds, for every 10,000 in the population, that were placed at the provider through one of their choices, including any choices made through Extra, or via Adjustment, Clearing or RPA. It is an alternative way of expressing the entry rate to a provider. By referencing the underlying population this statistic shows how the number of placed applicants is changing in relation to the available pool of potential applicants and so gives the chance that somebody from the group will be placed at a provider.

This statistic is only reported for 18 year olds.

#### **Average offer rate**

The offer rate that you might expect if the predicted grades and subject choice of applicants were the only factors that influenced whether an applicant was made an offer by the provider. The average offer rate is calculated by dividing applicants according to their specific combination of grades (for A levels the best three predicted grades are used, for BTECs, International Baccalaureate and Scottish Highers and Advanced Highers, predicted grades along with any grades already achieved upon applying are used) and subject choice. For each combination the number of main scheme offers is divided by the number of main scheme applications, to give an overall offer rate. This is then multiplied by the number of applications made by the group for which the average offer rate is being calculated (for example POLAR3 quintile 1), to give an average number of offers for that group. These average number of offers are then added together across all combinations of predicted grade and subject and divided by the number of main scheme applications from the group to give the average offer rate.

The average offer rate does not attempt to control for any other factors that may play a part in the decision to make an offer, such as the subject of the qualifications studied, their relevance to a course, or the grade in each subject; higher numbers of A levels being studied; the exact profile of grades predicted; personal statements; teacher references; interviews; or any other criteria (such as work experience or portfolios) that may be part of the admissions decision.

This statistic is only reported for 18 year olds.



### Contribution of group to the average offer rate

The way in which the average offer rate is defined means that the pattern of application and offers of a group (for example POLAR3 quintile 1) will always contribute, in part, to the average offer rate for that group. When this contribution is large, the average offer rate will mainly reflect the patterns for the group, meaning that the value of the average offer rate will be similar to the offer rate, the percentage point difference statistic will be small, and any real difference between the offer rate and what might be expected given the predicted grades and subject choices of the applicants will be difficult to detect.

Values of the contribution of group to the average offer rate range between 0 and 1. The closer the value is to 1 the greater the contribution a group makes to its own average offer rate.

This statistic is only reported for 18 year olds.

### Placed June deadline applicants

An applicant who has been placed for entry into higher education at the provider through a June deadline application.

### Placed June deadline applicants per 10,000 population

The number of UK domiciled 18 year old placed June deadline applicants at the provider divided by the number of UK 18 year olds in the population, multiplied by 10,000. This gives the number of 18 year olds, for every 10,000 in the population, that were placed at the provider through one of their June deadline applications. It is an alternative way of expressing the entry rate to a provider, but for placed June deadline applicants only. By referencing the underlying population this statistic shows how the number of placed June deadline applicants is changing in relation to the available pool of potential 18 year old applicants and so gives the chance that somebody from the group will be placed at a provider through a June deadline application.

This statistic is only reported for 18 year olds.

### June deadline applications

An application (or choice) to a course in higher education to the provider that is made by the June 30 deadline. Each applicant can make up to five choices this way. The number of June deadline applications does not include choices made through the following routes: Clearing, Extra, Adjustment and RPAs. Applications made to October deadline courses received after the October deadline are not included in these statistics.

### June deadline applicants

The number of applicants that made at least one application to the provider by the June 30 deadline.

### June deadline applicants per 10,000 population

The number of UK domiciled 18 year old June deadline applicants to the provider divided by the number of UK 18 year olds in the population, multiplied by 10,000. This gives the number of 18 year olds, for every 10,000 in the population, who applied by the June 30 deadline. It is equivalent to the application rate. By referencing the underlying population this statistic shows how the number of June deadline applicants is changing in relation to the available pool of potential 18 year old applicants and so gives the chance that somebody from the group will apply to a provider by the June 30 deadline.

This statistic is only reported for 18 year olds.

### Offers

An offer is defined as a provider's decision in response to an application to offer a place to an applicant, often subject to the applicant satisfying academic and/or other criteria, via a June deadline application (i.e. does not cover choices made through the following routes: Clearing, Extra, Adjustment and RPAs).

### Offer rate

The number of offers made divided by the number of June deadline applications. This gives the proportion of all June deadline applications to the provider that received an offer.

### Percentage point difference between offer rate and average offer rate

The offer rate minus the average offer rate.

The percentage point difference can be compared to the expected range of statistical variation resulting from the calculation of the average offer rate using the Average Offer Rate Lookup Table. Where the value of the percentage point difference lies outside of this range, the percentage point difference may be considered to represent a real difference between the offer rate and the average offer rate.

### Other definitions

#### Age

This analysis uses country-specific age definitions that align with the cut off points for school and college cohorts within the different administrations of the UK. For England and Wales, ages are defined on the 31 August, for Northern Ireland on the 1 July and for Scotland on the 28 February the following year. Defining ages in this way matches the assignment of children to school cohorts. For applicants outside of the UK a cohort cut off of 31 August has been used.

#### Provider

A higher education provider - a university or college.

#### UK domiciled

Declared area of permanent residence within England, Northern Ireland, Scotland and Wales. Applicants from the Channel Islands and Isle of Man are not included.