

## Y50 University of York

**Cycle years:** 2011 - 2016

**Cycle Reference Point:** End of Cycle

**Applicant coverage:** UK domiciled

**Reporting groups:** Sex, POLAR3, ethnic group

**Applicant statistics:** June deadline applicants, placed June deadline applicants, all placed applicants, June deadline applicants per 10,000 population, placed June deadline applicants per 10,000 population, all placed applicants per 10,000 population

**Application statistics:** June deadline applications, offers, offer rate, average offer rate, percentage point difference between offer rate and average offer rate, contribution of group to the average offer rate

**Non-disclosure controls:** To avoid the disclosure of information about any individual the following measures are taken

- Applicants, placed applicants, applications and offers are rounded to the nearest 5.
- Applicants/placed applicants per 10,000 population figures are reported as 0 if the applicant/placed applicant figures are rounded to 0.
- All statistics related to the offer rate are not reported when the number of applications for a group is less than 10. The percentage point difference between the offer rate and the average offer rate is not reported when the number of applications for a group is less than 50.
- Offer rates are reported as 0% if there are fewer than 5 offers, and 100% if the number of offers is within 5 of the number of applications. When the offer rate is reported as 0% or 100%, it is reported in italics.

### Contents:

18 year old applicants:	P.1
18 year old applications:	P.2
18 year old applicants by sex:	P.3
18 year old applications by sex:	P.4
18 year old applicants by POLAR3 quintile:	P.7
18 year old applications by POLAR3 quintile:	P.8
18 year old applicants by ethnic group:	P.11
18 year old applications by ethnic group:	P.12
Applicants (all ages):	P.15
Applications (all ages):	P.16
Applicants (all ages) by sex:	P.17
Applications (all ages) by sex:	P.18
Applicants (all ages) by POLAR3 quintile:	P.19
Applications (all ages) by POLAR3 quintile:	P.20
Applicants (all ages) by ethnic group:	P.21
Applications (all ages) by ethnic group:	P.22

## P.1 18 year old applicants

Statistic	2011	2012	2013	2014	2015	2016
June deadline applicants	12,750	13,455	13,900	13,785	14,300	15,140
Placed June deadline applicants	1,910	2,065	2,150	2,020	2,155	2,370
All placed applicants	1,990	2,265	2,475	2,335	2,565	2,870
June deadline applicants per 10,000 population	165.6	173.9	182.7	183.0	186.6	202.0
Placed June deadline applicants per 10,000	24.8	26.7	28.2	26.8	28.1	31.6
All placed applicants per 10,000 population	25.9	29.3	32.5	31.0	33.5	38.3

## P.2 18 year old applications

Statistic	2011	2012	2013	2014	2015	2016
June deadline applications	12,910	13,650	14,085	13,935	14,460	15,330
Offers	9,300	10,205	10,680	10,920	11,360	12,335
Offer rate	72.0%	74.8%	75.8%	78.4%	78.5%	80.5%

### P.3 18 year old applicants by sex

Statistic	Sex	2011	2012	2013	2014	2015	2016
June deadline applicants	Men	5,705	5,935	5,805	5,570	5,485	5,730
	Women	7,045	7,515	8,095	8,215	8,810	9,410
Placed June deadline applicants	Men	915	905	1,000	910	940	975
	Women	1,000	1,160	1,150	1,115	1,215	1,400
All placed applicants	Men	950	1,005	1,170	1,065	1,155	1,230
	Women	1,040	1,260	1,305	1,265	1,410	1,640
June deadline applicants per 10,000 population	Men	145.0	149.7	148.7	143.9	139.8	149.2
	Women	187.1	199.4	218.5	224.5	235.8	257.5
Placed June deadline applicants per 10,000 population	Men	23.2	22.8	25.6	23.5	24.0	25.3
	Women	26.5	30.8	31.0	30.4	32.5	38.3
All placed applicants per 10,000 population	Men	24.2	25.4	30.0	27.5	29.4	32.1
	Women	27.6	33.4	35.2	34.6	37.8	44.8

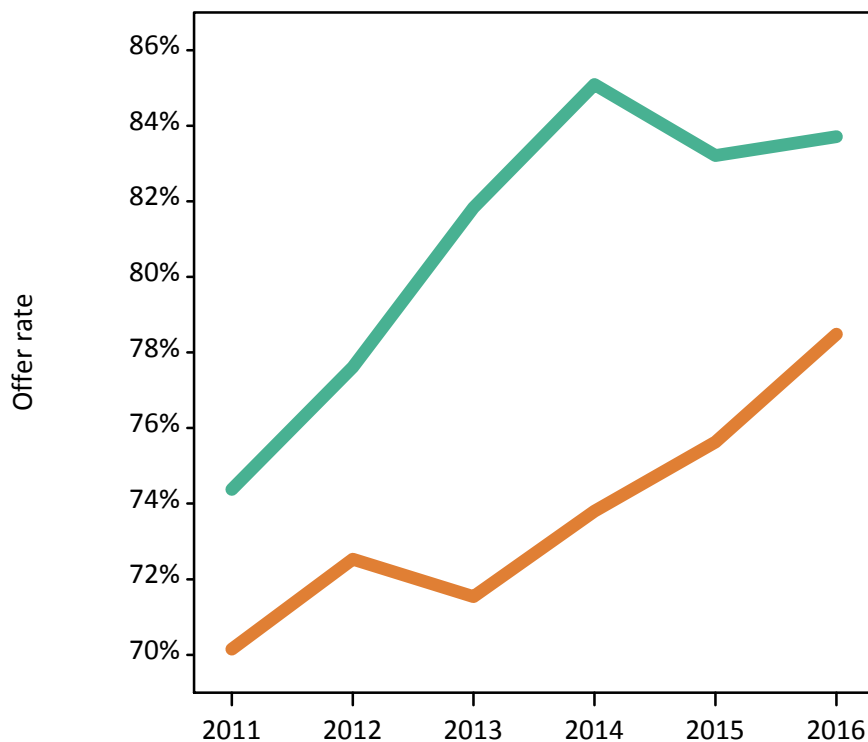
### P.4 18 year old applications by sex

Statistic	Sex	2011	2012	2013	2014	2015	2016
June deadline applications	Men	5,780	6,035	5,880	5,645	5,560	5,800
	Women	7,130	7,615	8,205	8,290	8,905	9,530
Offers	Men	4,300	4,685	4,810	4,800	4,625	4,855
	Women	5,000	5,520	5,870	6,120	6,735	7,480
Offer rate	Men	74.4%	77.6%	81.8%	85.1%	83.2%	83.7%
	Women	70.1%	72.5%	71.5%	73.8%	75.6%	78.5%
Average offer rate	Men	75.1%	78.2%	82.4%	85.3%	83.5%	83.7%
	Women	69.5%	72.1%	71.2%	73.6%	75.5%	78.5%
Percentage point difference between offer rate and average offer rate	Men	-0.8	-0.5	-0.5	-0.2	-0.3	0.0
	Women	0.6	0.4	0.4	0.2	0.2	-0.0
Contribution of group to the average offer rate	Men	0.596	0.593	0.579	0.559	0.550	0.535
	Women	0.672	0.678	0.699	0.700	0.719	0.717

### P.5 18 year old offer rate by sex

Note: The line for a group is not plotted when that group made fewer than 10 applications in any of the years from 2011-2016.

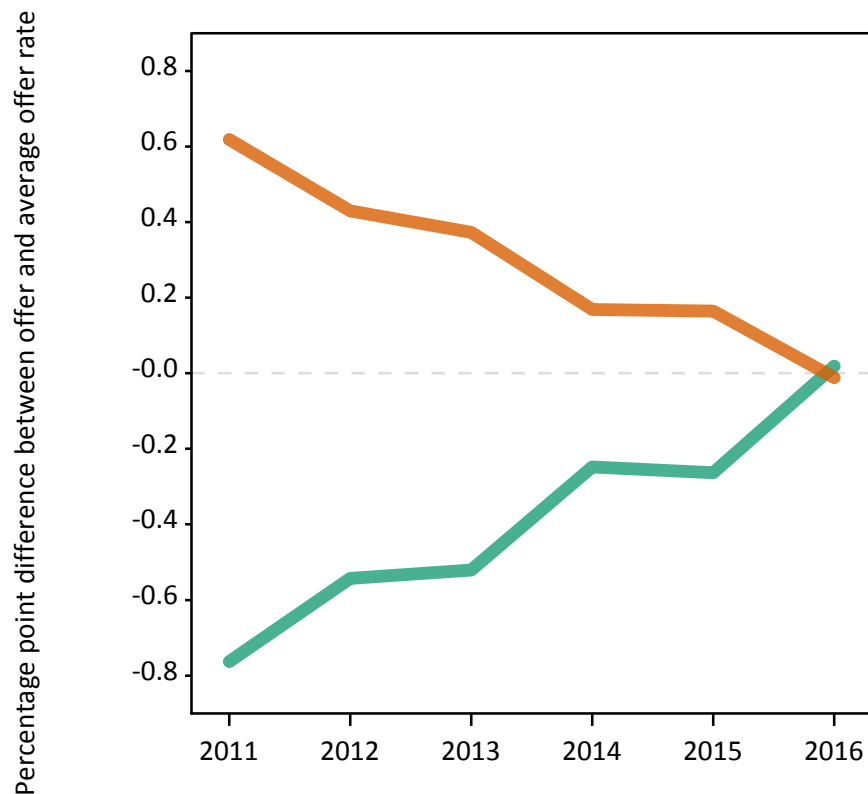
Men  
Women



### P.6 Percentage point difference between 18 year old offer rate and average offer rate by sex

Note: The line for a group is not plotted when that group made fewer than 50 applications in any of the years from 2011-2016.

Men  
Women



## P.7 18 year old applicants by POLAR3 quintile

Statistic	POLAR3 quintile	2011	2012	2013	2014	2015	2016
June deadline applicants	Quintile 1	1,025	1,075	1,210	1,280	1,400	1,535
	Quintile 2	1,510	1,600	1,770	1,810	1,900	2,005
	Quintile 3	2,120	2,210	2,395	2,355	2,490	2,600
	Quintile 4	3,095	3,220	3,285	3,165	3,385	3,645
	Quintile 5	4,970	5,320	5,230	5,155	5,080	5,310
Placed June deadline applicants	Quintile 1	125	125	140	165	170	205
	Quintile 2	210	240	235	235	275	295
	Quintile 3	285	335	405	350	370	410
	Quintile 4	480	545	525	500	580	565
	Quintile 5	805	815	845	775	755	890
All placed applicants	Quintile 1	135	140	160	190	200	220
	Quintile 2	215	270	265	260	315	345
	Quintile 3	295	370	460	395	440	475
	Quintile 4	500	580	595	580	665	690
	Quintile 5	845	910	990	905	930	1,125
June deadline applicants per 10,000 population	Quintile 1	71.3	75.5	86.7	92.1	100.1	113.6
	Quintile 2	100.4	106.6	120.0	123.6	128.0	138.7
	Quintile 3	137.9	143.2	157.1	156.4	162.1	172.8
	Quintile 4	197.7	203.0	210.2	205.5	216.2	236.2
	Quintile 5	300.3	316.7	316.2	316.0	303.4	321.3
Placed June deadline applicants per 10,000 population	Quintile 1	8.8	8.9	10.1	12.0	12.3	15.3
	Quintile 2	13.9	16.1	15.8	15.9	18.4	20.3
	Quintile 3	18.5	21.8	26.5	23.1	24.0	27.2
	Quintile 4	30.8	34.2	33.4	32.3	36.9	36.5
	Quintile 5	48.8	48.6	51.1	47.5	45.0	54.0
All placed applicants per 10,000 population	Quintile 1	9.5	9.7	11.6	13.6	14.4	16.4
	Quintile 2	14.4	17.9	17.8	17.8	21.1	23.9
	Quintile 3	19.0	23.8	30.0	26.3	28.7	31.7
	Quintile 4	31.9	36.6	38.1	37.8	42.5	44.6
	Quintile 5	51.0	54.1	59.8	55.4	55.7	68.2

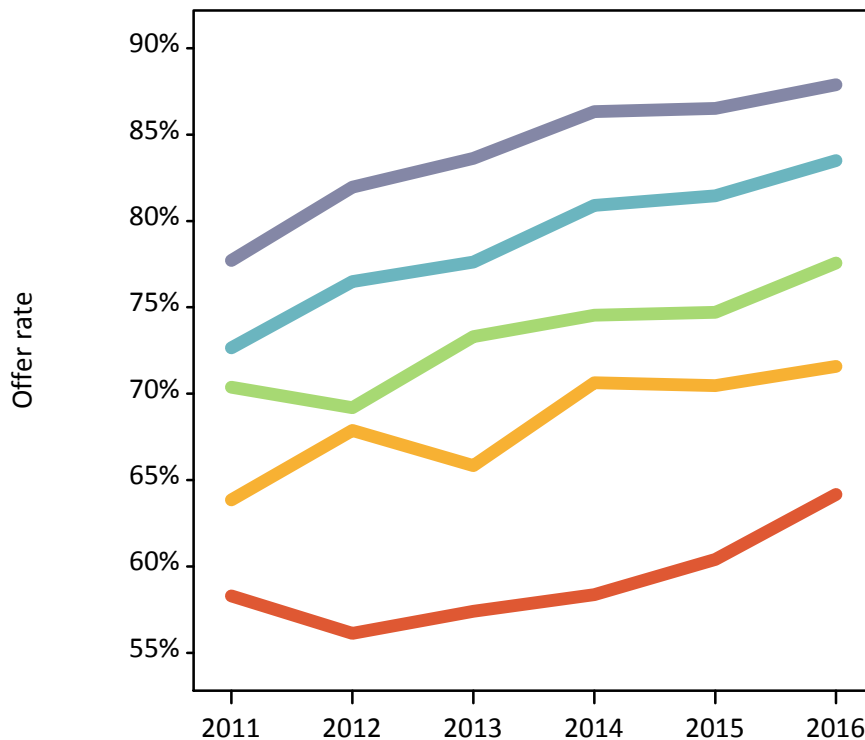
## P.8 18 year old applications by POLAR3 quintile

Statistic	POLAR3 quintile	2011	2012	2013	2014	2015	2016
June deadline applications	Quintile 1	1,045	1,100	1,235	1,300	1,415	1,560
	Quintile 2	1,530	1,630	1,805	1,820	1,930	2,035
	Quintile 3	2,145	2,250	2,435	2,385	2,520	2,630
	Quintile 4	3,135	3,265	3,325	3,210	3,430	3,690
	Quintile 5	5,030	5,375	5,275	5,195	5,120	5,365
Offers	Quintile 1	610	620	710	760	855	1,000
	Quintile 2	975	1,105	1,185	1,285	1,360	1,460
	Quintile 3	1,510	1,555	1,785	1,775	1,880	2,040
	Quintile 4	2,275	2,500	2,580	2,595	2,795	3,080
	Quintile 5	3,910	4,405	4,410	4,485	4,430	4,715
Offer rate	Quintile 1	58.3%	56.1%	57.4%	58.4%	60.4%	64.2%
	Quintile 2	63.9%	67.9%	65.8%	70.6%	70.5%	71.6%
	Quintile 3	70.4%	69.2%	73.3%	74.5%	74.7%	77.6%
	Quintile 4	72.6%	76.5%	77.6%	80.9%	81.5%	83.5%
	Quintile 5	77.7%	82.0%	83.6%	86.3%	86.5%	87.9%
Average offer rate	Quintile 1	61.0%	60.5%	60.4%	61.3%	62.3%	66.7%
	Quintile 2	66.0%	68.9%	68.0%	71.2%	70.8%	73.4%
	Quintile 3	70.6%	71.4%	73.6%	75.0%	76.0%	77.9%
	Quintile 4	72.9%	75.8%	77.0%	81.0%	81.1%	82.8%
	Quintile 5	76.3%	80.3%	82.5%	85.1%	85.5%	86.7%
Percentage point difference between offer rate and average offer rate	Quintile 1	-2.7	-4.4	-3.0	-2.9	-1.9	-2.5
	Quintile 2	-2.1	-1.0	-2.2	-0.5	-0.3	-1.8
	Quintile 3	-0.3	-2.2	-0.3	-0.5	-1.3	-0.4
	Quintile 4	-0.2	0.7	0.7	-0.1	0.4	0.7
	Quintile 5	1.4	1.7	1.2	1.2	1.0	1.2
Contribution of group to the average offer rate	Quintile 1	0.169	0.166	0.179	0.192	0.198	0.194
	Quintile 2	0.188	0.177	0.188	0.187	0.197	0.192
	Quintile 3	0.220	0.217	0.216	0.218	0.226	0.214
	Quintile 4	0.283	0.278	0.271	0.272	0.278	0.282
	Quintile 5	0.450	0.453	0.435	0.439	0.423	0.419

### P.9 18 year old offer rate by POLAR3 quintile

Note: The line for a group is not plotted when that group made fewer than 10 applications in any of the years from 2011-2016.

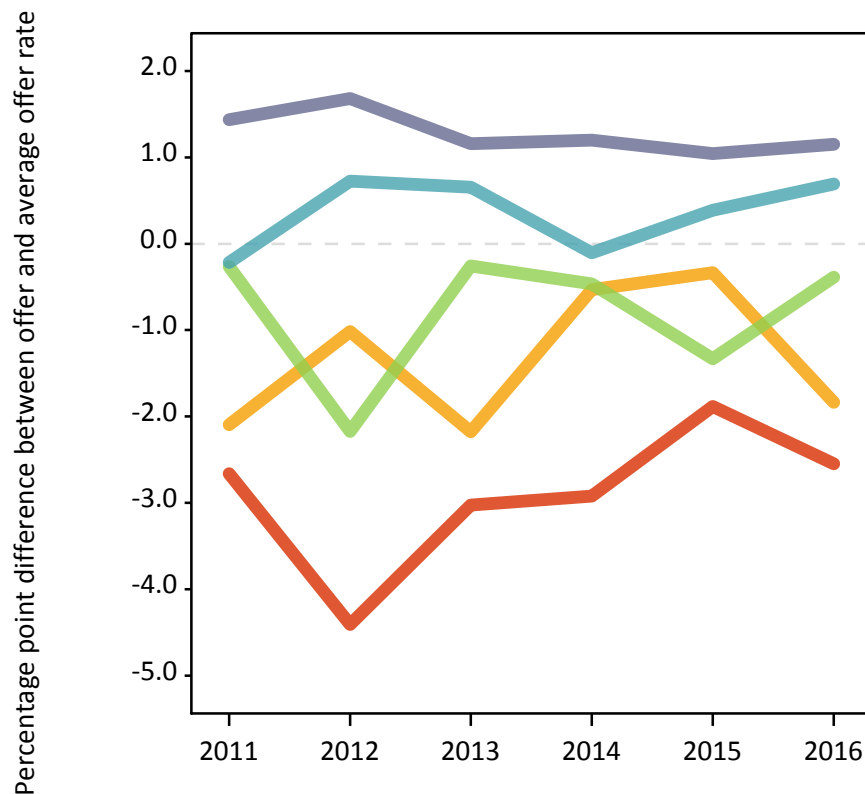
- Quintile 1
- Quintile 2
- Quintile 3
- Quintile 4
- Quintile 5



### P.10 Percentage point difference between 18 year old offer rate and average offer rate by POLAR3 quintile

Note: The line for a group is not plotted when that group made fewer than 50 applications in any of the years from 2011-2016.

- Quintile 1
- Quintile 2
- Quintile 3
- Quintile 4
- Quintile 5



## P.11 18 year old applicants by ethnic group

Statistic	Ethnic group	2011	2012	2013	2014	2015	2016
June deadline applicants	Asian	545	530	625	695	610	665
	Black	155	145	205	225	220	250
	Mixed	425	420	455	490	510	595
	White	11,470	12,210	12,480	12,255	12,795	13,465
	Other	50	45	70	75	60	65
Placed June deadline applicants	Asian	60	55	85	85	70	65
	Black	15	15	30	35	30	25
	Mixed	65	55	70	65	65	80
	White	1,750	1,915	1,935	1,810	1,960	2,180
	Other	10	5	10	15	10	10
All placed applicants	Asian	70	70	115	115	115	130
	Black	20	25	45	50	45	50
	Mixed	65	65	85	85	95	120
	White	1,815	2,080	2,195	2,055	2,280	2,535
	Other	10	10	15	20	10	15
June deadline applicants per 10,000 population	Asian	86.2	81.7	94.5	102.3	85.9	92.7
	Black	57.1	50.8	68.7	73.6	69.7	79.9
	Mixed	175.1	161.2	169.0	170.0	165.7	189.8
	White	177.1	189.1	198.3	198.6	205.4	222.6
	Other	63.0	50.9	75.0	82.7	60.2	66.5
Placed June deadline applicants per 10,000 population	Asian	9.4	8.2	12.7	12.7	10.2	9.3
	Black	5.5	6.0	10.8	10.9	9.1	8.6
	Mixed	26.4	20.7	26.6	23.3	21.7	25.4
	White	27.1	29.7	30.8	29.4	31.5	36.0
	Other	9.9	5.7	11.0	15.0	8.3	9.1
All placed applicants per 10,000 population	Asian	10.9	10.8	17.3	17.0	16.0	18.3
	Black	6.9	8.2	15.5	16.2	14.1	16.3
	Mixed	27.2	24.6	32.2	28.9	30.2	37.8
	White	28.0	32.2	34.9	33.3	36.6	41.9
	Other	11.1	9.0	17.6	22.6	11.4	16.1



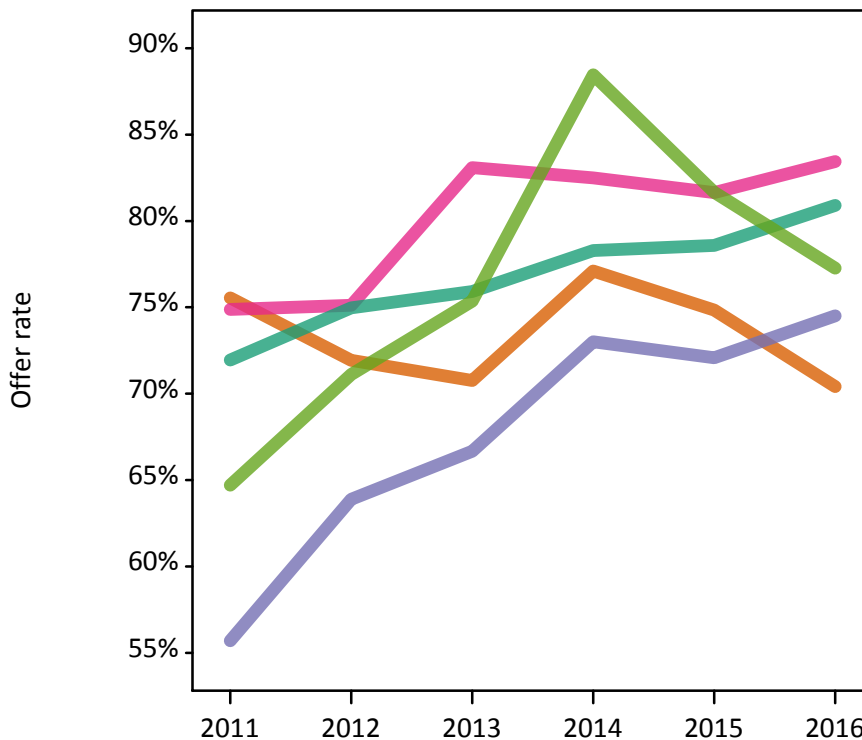
## P.12 18 year old applications by ethnic group

Statistic	Ethnic group	2011	2012	2013	2014	2015	2016
June deadline applications	Asian	545	530	625	700	615	670
	Black	160	145	205	225	220	250
	Mixed	425	420	460	490	510	600
	White	11,620	12,395	12,655	12,390	12,945	13,650
	Other	50	45	70	80	60	65
Offers	Asian	410	380	445	540	460	470
	Black	90	90	135	165	160	185
	Mixed	320	315	385	405	420	500
	White	8,360	9,295	9,605	9,700	10,175	11,040
	Other	35	30	50	70	50	50
Offer rate	Asian	75.6%	71.9%	70.8%	77.1%	74.8%	70.4%
	Black	55.7%	63.9%	66.7%	73.0%	72.1%	74.5%
	Mixed	74.9%	75.1%	83.1%	82.5%	81.6%	83.4%
	White	72.0%	75.0%	75.9%	78.3%	78.6%	80.9%
	Other	64.7%	71.1%	75.4%	88.5%	81.7%	77.3%
Average offer rate	Asian	74.3%	73.4%	72.5%	76.2%	75.4%	72.3%
	Black	61.4%	64.4%	67.7%	72.6%	72.4%	73.8%
	Mixed	73.5%	74.7%	81.8%	81.4%	81.7%	82.5%
	White	72.0%	74.9%	75.9%	78.4%	78.6%	80.8%
	Other	73.2%	71.9%	78.0%	85.7%	82.4%	81.0%
Percentage point difference between offer rate and average offer rate	Asian	1.3	-1.5	-1.7	1.0	-0.6	-1.9
	Black	-5.7	-0.5	-1.0	0.4	-0.3	0.7
	Mixed	1.4	0.4	1.3	1.1	-0.0	0.9
	White	-0.0	0.1	0.1	-0.1	0.0	0.1
	Other	-8.5	N/A	-2.7	2.8	-0.7	-3.7
Contribution of group to the average offer rate	Asian	0.136	0.115	0.130	0.130	0.116	0.108
	Black	0.086	0.086	0.097	0.087	0.090	0.076
	Mixed	0.079	0.097	0.089	0.092	0.089	0.097
	White	0.908	0.916	0.907	0.899	0.903	0.899
	Other	0.080	0.096	0.071	0.048	0.055	0.087

**P.13 18 year old offer rate by ethnic group**

Note: The line for a group is not plotted when that group made fewer than 10 applications in any of the years from 2011-2016.

- Asian
- Black
- Mixed
- White
- Other



**P.14 Percentage point difference between 18 year old offer rate and average offer rate by ethnic group**

Note: The line for a group is not plotted when that group made fewer than 50 applications in any of the years from 2011-2016.

- Asian
- Black
- Mixed
- White
- Other



### P.15 Applicants (all ages)

Statistic	2011	2012	2013	2014	2015	2016
June deadline applicants	18,770	18,810	20,250	20,345	20,890	21,440
Placed June deadline applicants	2,855	2,760	2,915	2,885	2,965	3,240
All placed applicants	3,015	3,065	3,390	3,360	3,580	3,950

### P.16 Applications (all ages)

Statistic	2011	2012	2013	2014	2015	2016
June deadline applications	19,155	19,185	20,660	20,730	21,260	21,820
Offers	12,110	12,440	13,360	13,905	14,315	15,475
Offer rate	63.2%	64.8%	64.7%	67.1%	67.3%	70.9%

### P.17 Applicants (all ages) by sex

Statistic	Sex	2011	2012	2013	2014	2015	2016
June deadline applicants	Men	8,085	7,885	8,010	7,795	7,675	7,965
	Women	10,685	10,925	12,240	12,550	13,215	13,475
Placed June deadline applicants	Men	1,330	1,205	1,340	1,275	1,285	1,335
	Women	1,525	1,555	1,575	1,610	1,675	1,905
All placed applicants	Men	1,405	1,365	1,575	1,515	1,615	1,705
	Women	1,610	1,700	1,815	1,850	1,965	2,245

### P.18 Applications (all ages) by sex

Statistic	Sex	2011	2012	2013	2014	2015	2016
June deadline applications	Men	8,245	8,050	8,150	7,945	7,810	8,125
	Women	10,910	11,135	12,510	12,785	13,445	13,700
Offers	Men	5,565	5,715	6,040	6,110	5,935	6,250
	Women	6,545	6,725	7,320	7,790	8,380	9,225
Offer rate	Men	67.5%	71.0%	74.1%	76.9%	76.0%	77.0%
	Women	60.0%	60.4%	58.5%	61.0%	62.3%	67.3%

### P.19 Applicants (all ages) by POLAR3 quintile

Statistic	POLAR3 quintile	2011	2012	2013	2014	2015	2016
June deadline applicants	Quintile 1	1,975	2,025	2,285	2,410	2,685	2,650
	Quintile 2	2,395	2,485	2,825	2,920	3,045	3,075
	Quintile 3	3,185	3,180	3,505	3,525	3,640	3,695
	Quintile 4	4,390	4,275	4,565	4,525	4,725	4,945
	Quintile 5	6,770	6,795	7,045	6,925	6,730	6,990
Placed June deadline applicants	Quintile 1	225	215	215	255	285	300
	Quintile 2	355	345	340	360	390	425
	Quintile 3	455	455	525	495	520	570
	Quintile 4	705	705	695	710	755	755
	Quintile 5	1,105	1,035	1,130	1,055	995	1,175
All placed applicants	Quintile 1	245	240	245	290	340	330
	Quintile 2	370	390	390	410	460	505
	Quintile 3	475	505	600	575	635	675
	Quintile 4	745	760	805	830	890	925
	Quintile 5	1,170	1,165	1,335	1,255	1,245	1,495

### P.20 Applications (all ages) by POLAR3 quintile

Statistic	POLAR3 quintile	2011	2012	2013	2014	2015	2016
June deadline applications	Quintile 1	2,030	2,080	2,335	2,450	2,730	2,695
	Quintile 2	2,440	2,545	2,905	2,980	3,105	3,145
	Quintile 3	3,260	3,250	3,585	3,620	3,710	3,760
	Quintile 4	4,465	4,355	4,650	4,615	4,820	5,025
	Quintile 5	6,900	6,910	7,155	7,025	6,830	7,110
Offers	Quintile 1	875	870	955	1,060	1,230	1,350
	Quintile 2	1,305	1,390	1,505	1,670	1,770	1,880
	Quintile 3	1,990	1,910	2,230	2,280	2,370	2,570
	Quintile 4	2,940	2,985	3,205	3,295	3,470	3,775
	Quintile 5	4,960	5,245	5,445	5,570	5,425	5,840
Offer rate	Quintile 1	43.0%	41.8%	40.9%	43.3%	45.1%	50.1%
	Quintile 2	53.5%	54.7%	51.9%	56.1%	57.1%	59.8%
	Quintile 3	61.1%	58.8%	62.2%	63.1%	64.0%	68.3%
	Quintile 4	65.8%	68.6%	69.0%	71.4%	72.0%	75.1%
	Quintile 5	71.9%	75.9%	76.1%	79.3%	79.4%	82.1%

## P.21 Applicants (all ages) by ethnic group

Statistic	Ethnic group	2011	2012	2013	2014	2015	2016
June deadline applicants	Asian	830	825	970	1,080	1,045	1,055
	Black	455	475	545	535	625	610
	Mixed	610	565	660	700	755	825
	White	16,610	16,705	17,830	17,790	18,170	18,650
	Other	95	85	115	140	120	115
Placed June deadline applicants	Asian	85	75	125	125	115	110
	Black	40	45	55	60	65	50
	Mixed	90	65	95	90	95	115
	White	2,600	2,535	2,600	2,560	2,640	2,930
	Other	15	10	15	25	10	15
All placed applicants	Asian	105	100	165	175	185	200
	Black	50	60	75	90	95	95
	Mixed	95	80	120	120	140	165
	White	2,720	2,775	2,965	2,920	3,095	3,425
	Other	15	10	25	35	20	25

## P.22 Applications (all ages) by ethnic group

Statistic	Ethnic group	2011	2012	2013	2014	2015	2016
June deadline applications	Asian	835	830	985	1,100	1,060	1,070
	Black	465	495	555	555	640	615
	Mixed	615	570	665	705	760	830
	White	16,965	17,040	18,200	18,120	18,495	19,005
	Other	95	85	115	145	120	125
Offers	Asian	545	510	615	740	675	670
	Black	170	165	205	250	270	290
	Mixed	420	390	480	525	565	620
	White	10,790	11,205	11,890	12,220	12,585	13,685
	Other	60	45	70	95	75	80
Offer rate	Asian	65.1%	61.6%	62.4%	67.1%	63.6%	62.8%
	Black	36.1%	33.7%	36.8%	44.9%	41.7%	46.9%
	Mixed	68.7%	68.2%	71.8%	74.8%	74.2%	74.8%
	White	63.6%	65.7%	65.3%	67.4%	68.1%	72.0%
	Other	64.9%	56.6%	62.3%	67.8%	62.8%	64.2%

## Technical Notes and Definitions

### UCAS undergraduate scheme

#### Adjustment

Adjustment allows applicants who have met and exceeded the terms of their conditional firm offer to seek and find a place at another provider whilst keeping their place at their original firm choice provider.

#### Clearing

Clearing is a route for applicants that are not placed and holding no offers to find a place on courses with vacancies.

#### Cycle year

The UCAS application cycle which runs from September to October the following year. For example the 2016 cycle runs from September 2015 through to October 2016.

#### End of cycle

The point in the cycle to which the numbers in this report refer, and the point at which the cycle is closed such that no more applications or offers can be made, and no more applicants can be placed. Numbers reported at the end of cycle exclude information on a small number of applicants who cancelled during the cycle.

#### Extra

Applicants who are unsuccessful in obtaining an offer or decline all offers may be eligible to apply through Extra, where they can apply to one further course at a time. Extra operates from 25 February until early July. It provides applicants who are eligible the possibility of obtaining an offer before exam results are published and Clearing starts.

#### June 30 deadline

The deadline for main scheme applications. Applicants who apply after this date will go directly into Clearing.

#### Record of Prior Acceptance (RPA)

RPA is an acceptance route used when a provider informs UCAS of applicants it has accepted outside of the normal application process (e.g. individuals who have applied directly to the provider).

### Reporting groups

#### Ethnic group

High level grouping of ethnic origin as declared by the applicant: 'White', 'Black', 'Asian', 'Mixed', 'Other', 'Unknown'. Applicants who declare themselves as 'Unknown' ethnic origin are not reported in these tables, but are included in the associated csv data file.

#### POLAR3 quintile

Developed by HEFCE, POLAR3 classifies small areas across the UK into five groups according to their level of young participation in Higher Education. Each of these groups represents around 20 per cent of young people and is ranked from Quintile 1 (areas with the lowest young participation rates, considered as the most disadvantaged) to Quintile 5 (highest young participation rates, considered most advantaged). POLAR3 is based on the participation rates of young people between 2005 and 2009 who entered Higher Education between 2005-06 and 2010-11, therefore is most suitable for applicants aged 19 and under. These groups are assigned using the postcode declared by the applicant at the time of their application. If a UK postcode is invalid, considered unsafe for measurement or there is no link to Census geography possible then the applicant is not assigned to a quintile. Applicants with no POLAR3 quintile are not reported.

#### Sex

Sex as declared by the applicant.

### SIMD quintile

Scottish index of multiple deprivation (SIMD) for 2012 identifies small area concentrations of multiple deprivation across all of Scotland, providing a relative measure of deprivation amongst 6505 small areas (data zones) based on 7 socio-economic domains. These small areas are classified into five groups ranked from Quintile 1 (considered the most deprived) to Quintile 5 (considered least deprived), with equal populations in each quintile. Quintiles are assigned using the postcode declared by the applicant, applicants declaring invalid postcodes are classified as 'Not assigned' and are not reported.

SIMD is only defined for applicants domiciled in Scotland, therefore any applicants domiciled outside of Scotland cannot be assigned to an SIMD quintile and so are not reported for this measure.

SIMD is only reported for providers in Scotland. Application and entry rates by SIMD are reported in the 2016 End of Cycle Report and the 2016 cycle January deadline application rate report.

### Statistics reported in the tables

#### All placed applicants

The number of applicants placed for entry into higher education at the provider through one of their choices, including any choices made through Extra, or via Adjustment, Clearing or RPA.

#### All placed applicants per 10,000 population

The number of total UK domiciled 18 year old placed applicants for entry into higher education at the provider divided by the number of UK 18 year olds in the population, multiplied by 10,000. This gives the number of 18 year olds, for every 10,000 in the population, that were placed at the provider through one of their choices, including any choices made through Extra, or via Adjustment, Clearing or RPA. It is an alternative way of expressing the entry rate to a provider. By referencing the underlying population this statistic shows how the number of placed applicants is changing in relation to the available pool of potential applicants and so gives the chance that somebody from the group will be placed at a provider.

This statistic is only reported for 18 year olds.

#### Average offer rate

The offer rate that you might expect if the predicted grades and subject choice of applicants were the only factors that influenced whether an applicant was made an offer by the provider. The average offer rate is calculated by dividing applicants according to their specific combination of grades (for A levels the best three predicted grades are used, for BTECs, International Baccalaureate and Scottish Highers and Advanced Highers, predicted grades along with any grades already achieved upon applying are used) and subject choice. For each combination the number of main scheme offers is divided by the number of main scheme applications, to give an overall offer rate. This is then multiplied by the number of applications made by the group for which the average offer rate is being calculated (for example POLAR3 quintile 1), to give an average number of offers for that group. These average number of offers are then added together across all combinations of predicted grade and subject and divided by the number of main scheme applications from the group to give the average offer rate.

The average offer rate does not attempt to control for any other factors that may play a part in the decision to make an offer, such as the subject of the qualifications studied, their relevance to a course, or the grade in each subject; higher numbers of A levels being studied; the exact profile of grades predicted; personal statements; teacher references; interviews; or any other criteria (such as work experience or portfolios) that may be part of the admissions decision.

This statistic is only reported for 18 year olds.



### Contribution of group to the average offer rate

The way in which the average offer rate is defined means that the pattern of application and offers of a group (for example POLAR3 quintile 1) will always contribute, in part, to the average offer rate for that group. When this contribution is large, the average offer rate will mainly reflect the patterns for the group, meaning that the value of the average offer rate will be similar to the offer rate, the percentage point difference statistic will be small, and any real difference between the offer rate and what might be expected given the predicted grades and subject choices of the applicants will be difficult to detect.

Values of the contribution of group to the average offer rate range between 0 and 1. The closer the value is to 1 the greater the contribution a group makes to its own average offer rate.

This statistic is only reported for 18 year olds.

### Placed June deadline applicants

An applicant who has been placed for entry into higher education at the provider through a June deadline application.

### Placed June deadline applicants per 10,000 population

The number of UK domiciled 18 year old placed June deadline applicants at the provider divided by the number of UK 18 year olds in the population, multiplied by 10,000. This gives the number of 18 year olds, for every 10,000 in the population, that were placed at the provider through one of their June deadline applications. It is an alternative way of expressing the entry rate to a provider, but for placed June deadline applicants only. By referencing the underlying population this statistic shows how the number of placed June deadline applicants is changing in relation to the available pool of potential 18 year old applicants and so gives the chance that somebody from the group will be placed at a provider through a June deadline application.

This statistic is only reported for 18 year olds.

### June deadline applications

An application (or choice) to a course in higher education to the provider that is made by the June 30 deadline. Each applicant can make up to five choices this way. The number of June deadline applications does not include choices made through the following routes: Clearing, Extra, Adjustment and RPAs. Applications made to October deadline courses received after the October deadline are not included in these statistics.

### June deadline applicants

The number of applicants that made at least one application to the provider by the June 30 deadline.

### June deadline applicants per 10,000 population

The number of UK domiciled 18 year old June deadline applicants to the provider divided by the number of UK 18 year olds in the population, multiplied by 10,000. This gives the number of 18 year olds, for every 10,000 in the population, who applied by the June 30 deadline. It is equivalent to the application rate. By referencing the underlying population this statistic shows how the number of June deadline applicants is changing in relation to the available pool of potential 18 year old applicants and so gives the chance that somebody from the group will apply to a provider by the June 30 deadline.

This statistic is only reported for 18 year olds.

### Offers

An offer is defined as a provider's decision in response to an application to offer a place to an applicant, often subject to the applicant satisfying academic and/or other criteria, via a June deadline application (i.e. does not cover choices made through the following routes: Clearing, Extra, Adjustment and RPAs).

### Offer rate

The number of offers made divided by the number of June deadline applications. This gives the proportion of all June deadline applications to the provider that received an offer.

### Percentage point difference between offer rate and average offer rate

The offer rate minus the average offer rate.

The percentage point difference can be compared to the expected range of statistical variation resulting from the calculation of the average offer rate using the Average Offer Rate Lookup Table. Where the value of the percentage point difference lies outside of this range, the percentage point difference may be considered to represent a real difference between the offer rate and the average offer rate.

### Other definitions

#### Age

This analysis uses country-specific age definitions that align with the cut off points for school and college cohorts within the different administrations of the UK. For England and Wales, ages are defined on the 31 August, for Northern Ireland on the 1 July and for Scotland on the 28 February the following year. Defining ages in this way matches the assignment of children to school cohorts. For applicants outside of the UK a cohort cut off of 31 August has been used.

#### Provider

A higher education provider - a university or college.

#### UK domiciled

Declared area of permanent residence within England, Northern Ireland, Scotland and Wales. Applicants from the Channel Islands and Isle of Man are not included.