

P63 University of St Mark & St John (frm. UCP Marjon)

Cycle years: 2011 - 2016

Cycle Reference Point: End of Cycle

Applicant coverage: UK domiciled

Reporting groups: Sex, POLAR3, ethnic group

Applicant statistics: June deadline applicants, placed June deadline applicants, all placed applicants, June deadline applicants per 10,000 population, placed June deadline applicants per 10,000 population, all placed applicants per 10,000 population

Application statistics: June deadline applications, offers, offer rate, average offer rate, percentage point difference between offer rate and average offer rate, contribution of group to the average offer rate

Non-disclosure controls: To avoid the disclosure of information about any individual the following measures are taken

- Applicants, placed applicants, applications and offers are rounded to the nearest 5.
- Applicants/placed applicants per 10,000 population figures are reported as 0 if the applicant/placed applicant figures are rounded to 0.
- All statistics related to the offer rate are not reported when the number of applications for a group is less than 10. The percentage point difference between the offer rate and the average offer rate is not reported when the number of applications for a group is less than 50.
- Offer rates are reported as 0% if there are fewer than 5 offers, and 100% if the number of offers is within 5 of the number of applications. When the offer rate is reported as 0% or 100%, it is reported in italics.

Contents:

18 year old applicants:	P.1
18 year old applications:	P.2
18 year old applicants by sex:	P.3
18 year old applications by sex:	P.4
18 year old applicants by POLAR3 quintile:	P.7
18 year old applications by POLAR3 quintile:	P.8
18 year old applicants by ethnic group:	P.11
18 year old applications by ethnic group:	P.12
Applicants (all ages):	P.15
Applications (all ages):	P.16
Applicants (all ages) by sex:	P.17
Applications (all ages) by sex:	P.18
Applicants (all ages) by POLAR3 quintile:	P.19
Applications (all ages) by POLAR3 quintile:	P.20
Applicants (all ages) by ethnic group:	P.21
Applications (all ages) by ethnic group:	P.22

P.1 18 year old applicants

Statistic	2011	2012	2013	2014	2015	2016
June deadline applicants	1,345	1,480	1,415	1,225	950	925
Placed June deadline applicants	295	340	345	295	250	255
All placed applicants	330	390	370	315	275	275
June deadline applicants per 10,000 population	17.4	19.2	18.6	16.2	12.4	12.3
Placed June deadline applicants per 10,000	3.8	4.4	4.5	3.9	3.3	3.4
All placed applicants per 10,000 population	4.3	5.0	4.8	4.2	3.6	3.7

P.2 18 year old applications

Statistic	2011	2012	2013	2014	2015	2016
June deadline applications	1,625	1,765	1,735	1,530	1,215	1,115
Offers	975	1,210	1,465	1,365	1,070	965
Offer rate	60.0%	68.7%	84.4%	89.2%	88.2%	86.5%

P.3 18 year old applicants by sex

Statistic	Sex	2011	2012	2013	2014	2015	2016
June deadline applicants	Men	575	575	545	515	405	395
	Women	770	905	870	705	545	525
Placed June deadline applicants	Men	135	130	140	130	100	110
	Women	155	210	205	165	150	145
All placed applicants	Men	150	140	150	140	110	115
	Women	180	245	215	180	165	160
June deadline applicants per 10,000 population	Men	14.6	14.5	13.9	13.3	10.3	10.3
	Women	20.4	24.0	23.5	19.3	14.6	14.4
Placed June deadline applicants per 10,000 population	Men	3.5	3.3	3.6	3.4	2.6	2.8
	Women	4.2	5.6	5.6	4.5	4.0	4.0
All placed applicants per 10,000 population	Men	3.8	3.6	3.9	3.6	2.9	3.0
	Women	4.8	6.5	5.9	4.9	4.4	4.4

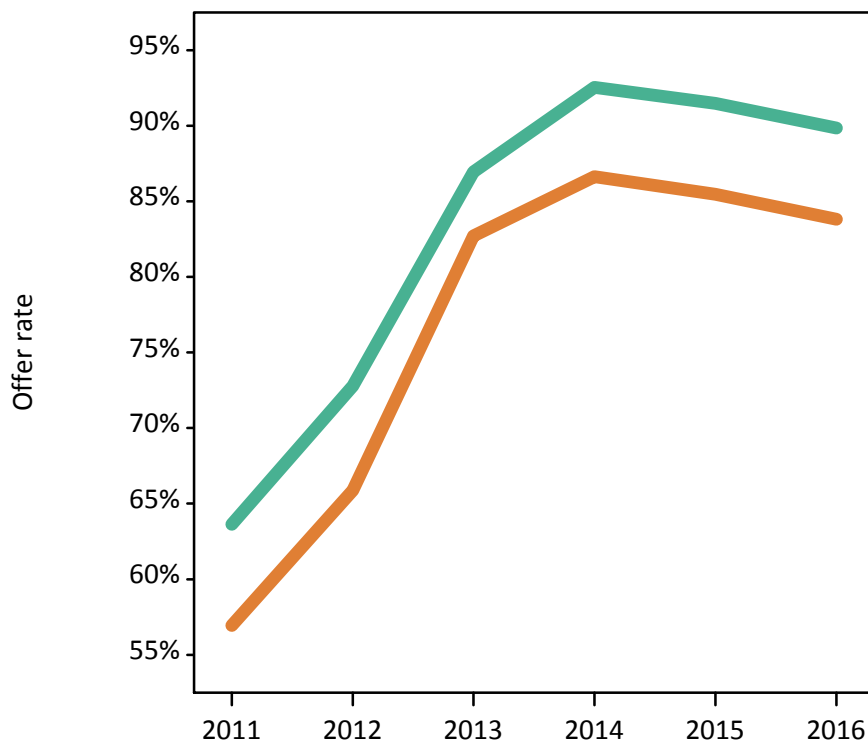
P.4 18 year old applications by sex

Statistic	Sex	2011	2012	2013	2014	2015	2016
June deadline applications	Men	745	715	695	670	550	495
	Women	880	1,050	1,035	860	660	625
Offers	Men	475	520	605	620	505	445
	Women	500	695	855	745	565	525
Offer rate	Men	63.6%	72.8%	86.9%	92.5%	91.5%	89.9%
	Women	56.9%	65.9%	82.7%	86.6%	85.5%	83.8%
Average offer rate	Men	65.1%	73.4%	88.2%	92.8%	90.5%	88.9%
	Women	55.7%	65.5%	81.8%	86.4%	86.3%	84.6%
Percentage point difference between offer rate and average offer rate	Men	-1.5	-0.6	-1.3	-0.3	1.0	1.0
	Women	1.2	0.4	0.9	0.2	-0.8	-0.8
Contribution of group to the average offer rate	Men	0.625	0.594	0.594	0.638	0.654	0.655
	Women	0.683	0.725	0.727	0.718	0.711	0.728

P.5 18 year old offer rate by sex

Note: The line for a group is not plotted when that group made fewer than 10 applications in any of the years from 2011-2016.

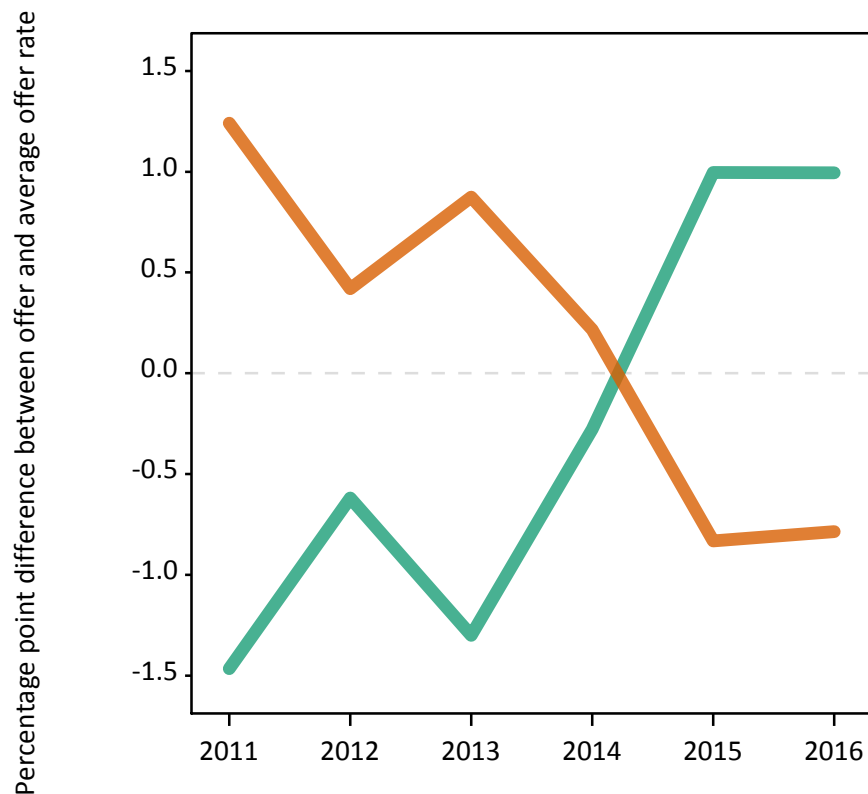
Men
Women



P.6 Percentage point difference between 18 year old offer rate and average offer rate by sex

Note: The line for a group is not plotted when that group made fewer than 50 applications in any of the years from 2011-2016.

Men
Women



P.7 18 year old applicants by POLAR3 quintile

Statistic	POLAR3 quintile	2011	2012	2013	2014	2015	2016
June deadline applicants	Quintile 1	195	215	235	220	165	160
	Quintile 2	305	305	285	285	195	190
	Quintile 3	330	345	325	265	215	240
	Quintile 4	285	370	330	275	235	210
	Quintile 5	230	250	230	175	135	125
Placed June deadline applicants	Quintile 1	50	50	70	60	40	45
	Quintile 2	65	70	75	70	55	50
	Quintile 3	75	85	80	60	70	70
	Quintile 4	60	85	75	70	65	65
	Quintile 5	45	50	40	40	25	25
All placed applicants	Quintile 1	55	60	70	60	45	45
	Quintile 2	75	75	85	75	60	55
	Quintile 3	85	90	80	65	75	80
	Quintile 4	65	100	85	80	70	65
	Quintile 5	50	60	45	40	30	30
June deadline applicants per 10,000 population	Quintile 1	13.6	15.2	16.8	15.7	11.9	11.8
	Quintile 2	20.2	20.3	19.5	19.5	13.0	13.2
	Quintile 3	21.3	22.2	21.4	17.7	14.1	15.8
	Quintile 4	18.3	23.2	21.2	17.9	15.0	13.7
	Quintile 5	13.8	14.8	14.0	10.8	8.2	7.4
Placed June deadline applicants per 10,000 population	Quintile 1	3.5	3.6	5.0	4.2	2.8	3.3
	Quintile 2	4.2	4.7	5.2	4.7	3.6	3.6
	Quintile 3	4.8	5.4	5.3	3.9	4.6	4.8
	Quintile 4	3.9	5.4	4.9	4.7	4.1	4.1
	Quintile 5	2.7	2.9	2.5	2.4	1.4	1.5
All placed applicants per 10,000 population	Quintile 1	4.0	4.2	5.2	4.5	3.1	3.5
	Quintile 2	4.9	5.1	5.6	5.0	3.9	3.9
	Quintile 3	5.4	5.8	5.3	4.2	4.8	5.2
	Quintile 4	4.3	6.4	5.4	5.1	4.5	4.2
	Quintile 5	3.0	3.5	2.8	2.5	1.8	1.8

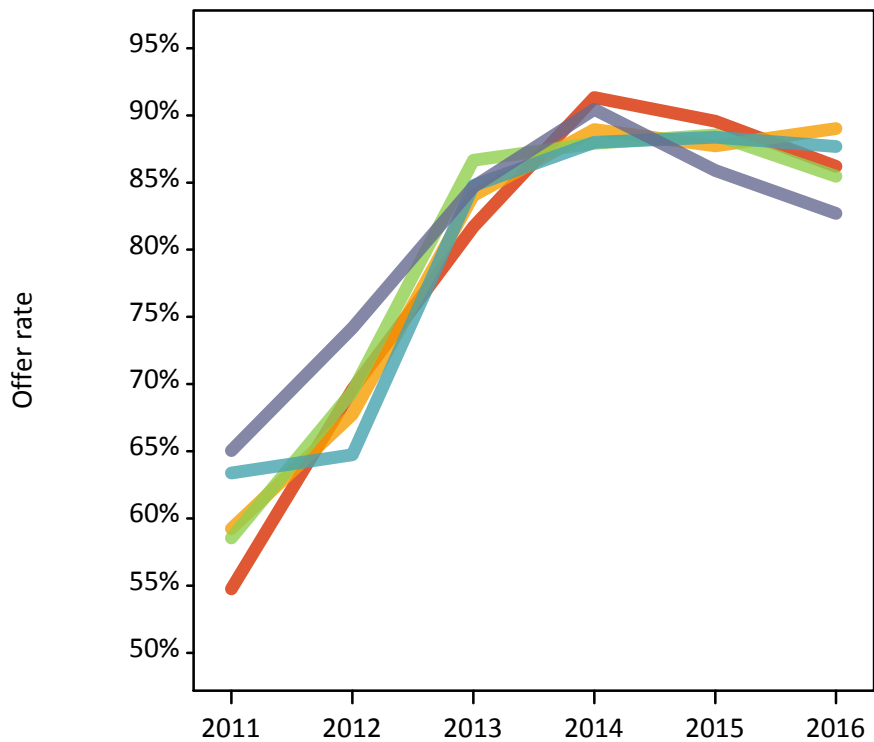
P.8 18 year old applications by POLAR3 quintile

Statistic	POLAR3 quintile	2011	2012	2013	2014	2015	2016
June deadline applications	Quintile 1	265	295	315	310	230	205
	Quintile 2	340	370	350	370	260	235
	Quintile 3	410	395	405	325	290	280
	Quintile 4	335	430	395	325	285	260
	Quintile 5	270	270	260	200	150	135
Offers	Quintile 1	145	205	260	285	205	175
	Quintile 2	200	250	295	330	230	210
	Quintile 3	240	275	350	285	255	240
	Quintile 4	215	280	335	285	250	230
	Quintile 5	175	200	220	180	130	110
Offer rate	Quintile 1	54.8%	69.6%	81.7%	91.3%	89.6%	86.2%
	Quintile 2	59.2%	67.8%	84.0%	88.9%	87.7%	89.0%
	Quintile 3	58.5%	69.4%	86.7%	87.9%	88.5%	85.5%
	Quintile 4	63.4%	64.7%	84.8%	88.0%	88.4%	87.7%
	Quintile 5	65.1%	74.2%	84.7%	90.5%	85.9%	82.7%
Average offer rate	Quintile 1	56.7%	71.1%	84.8%	89.7%	89.3%	87.0%
	Quintile 2	58.0%	69.3%	84.7%	89.5%	89.2%	88.5%
	Quintile 3	59.8%	67.2%	83.3%	90.8%	88.0%	85.6%
	Quintile 4	61.5%	67.2%	84.7%	87.2%	87.0%	86.0%
	Quintile 5	65.0%	69.6%	85.4%	88.4%	87.2%	85.5%
Percentage point difference between offer rate and average offer rate	Quintile 1	-2.0	-1.5	-3.0	1.6	0.2	-0.8
	Quintile 2	1.2	-1.6	-0.6	-0.6	-1.4	0.6
	Quintile 3	-1.3	2.2	3.3	-2.9	0.5	-0.1
	Quintile 4	1.9	-2.5	0.1	0.8	1.3	1.7
	Quintile 5	0.1	4.6	-0.8	2.1	-1.3	-2.8
Contribution of group to the average offer rate	Quintile 1	0.288	0.265	0.294	0.315	0.301	0.304
	Quintile 2	0.318	0.305	0.292	0.352	0.306	0.348
	Quintile 3	0.337	0.317	0.343	0.324	0.335	0.352
	Quintile 4	0.298	0.328	0.325	0.327	0.356	0.347
	Quintile 5	0.298	0.272	0.278	0.270	0.315	0.272

P.9 18 year old offer rate by POLAR3 quintile

Note: The line for a group is not plotted when that group made fewer than 10 applications in any of the years from 2011-2016.

- Quintile 1
- Quintile 2
- Quintile 3
- Quintile 4
- Quintile 5



P.10 Percentage point difference between 18 year old offer rate and average offer rate by POLAR3 quintile

Note: The line for a group is not plotted when that group made fewer than 50 applications in any of the years from 2011-2016.

- Quintile 1
- Quintile 2
- Quintile 3
- Quintile 4
- Quintile 5



P.11 18 year old applicants by ethnic group

Statistic	Ethnic group	2011	2012	2013	2014	2015	2016
June deadline applicants	Asian	5	15	10	10	10	10
	Black	10	10	15	10	10	5
	Mixed	15	15	25	20	10	15
	White	1,310	1,430	1,355	1,180	915	890
	Other	0	0	0	0	0	0
Placed June deadline applicants	Asian	0	0	0	0	0	5
	Black	5	0	0	5	0	0
	Mixed	0	5	5	5	5	0
	White	290	335	335	285	245	245
	Other	0	0	0	0	0	0
All placed applicants	Asian	0	0	0	0	0	5
	Black	5	0	0	5	0	5
	Mixed	5	5	5	5	5	0
	White	325	380	360	305	270	265
	Other	0	0	0	0	0	0
June deadline applicants per 10,000 population	Asian	0.6	2.5	1.5	1.3	1.1	1.4
	Black	4.0	4.3	5.4	3.6	3.1	2.2
	Mixed	6.6	6.5	10.0	7.3	3.9	4.8
	White	20.2	22.2	21.6	19.1	14.7	14.7
	Other	0.0	0.0	0.0	0.0	0.0	0.0
Placed June deadline applicants per 10,000 population	Asian	0.0	0.0	0.0	0.0	0.0	0.7
	Black	1.1	0.0	0.0	1.3	0.0	0.0
	Mixed	0.0	1.2	1.8	1.7	1.0	0.0
	White	4.4	5.2	5.4	4.6	3.9	4.1
	Other	0.0	0.0	0.0	0.0	0.0	0.0
All placed applicants per 10,000 population	Asian	0.0	0.0	0.0	0.0	0.0	0.7
	Black	1.5	0.0	0.0	1.3	0.0	1.3
	Mixed	1.2	1.9	1.8	2.1	1.3	0.0
	White	5.0	5.9	5.7	4.9	4.3	4.3
	Other	0.0	0.0	0.0	0.0	0.0	0.0

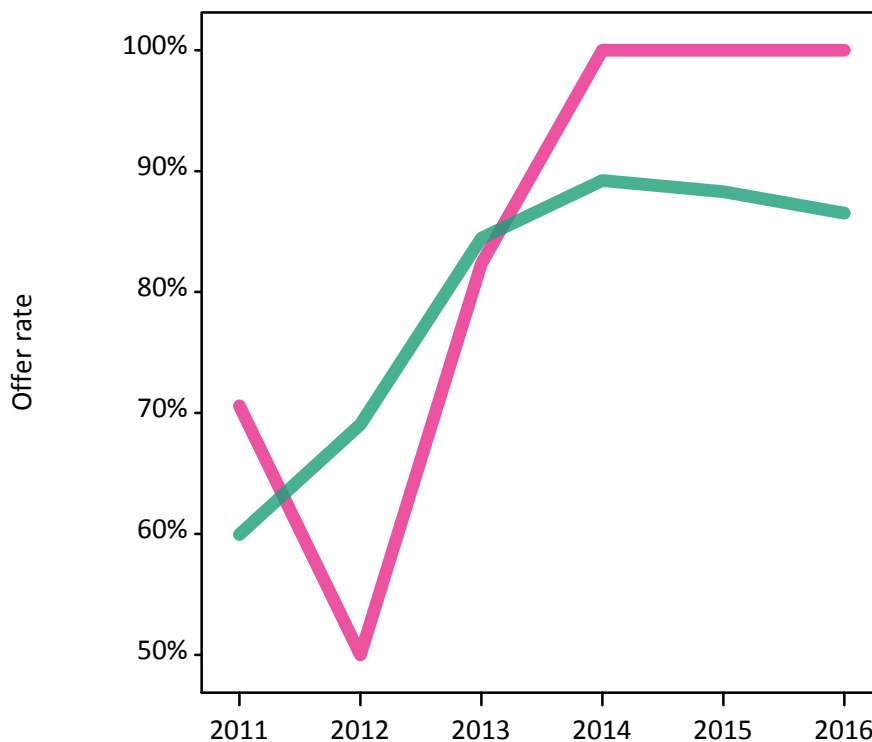
P.12 18 year old applications by ethnic group

Statistic	Ethnic group	2011	2012	2013	2014	2015	2016
June deadline applications	Asian	5	15	15	10	10	10
	Black	10	15	15	10	15	5
	Mixed	15	20	35	20	15	15
	White	1,590	1,710	1,660	1,485	1,170	1,085
	Other	0	0	0	0	5	0
Offers	Asian	5	10	15	10	5	5
	Black	5	10	15	10	10	5
	Mixed	10	10	30	20	10	15
	White	955	1,180	1,405	1,325	1,035	935
	Other	0	0	0	0	5	0
Offer rate	Asian	N/A	50.0%	100.0%	100.0%	N/A	100.0%
	Black	54.5%	100.0%	100.0%	100.0%	100.0%	N/A
	Mixed	70.6%	50.0%	82.4%	100.0%	100.0%	100.0%
	White	59.9%	69.1%	84.5%	89.2%	88.3%	86.5%
	Other	N/A	N/A	N/A	N/A	N/A	N/A
Average offer rate	Asian	N/A	61.2%	85.9%	97.9%	N/A	80.5%
	Black	64.7%	76.4%	84.7%	77.1%	90.7%	N/A
	Mixed	65.0%	64.8%	81.9%	94.6%	80.8%	90.2%
	White	59.9%	68.7%	84.4%	89.2%	88.2%	86.5%
	Other	N/A	N/A	N/A	N/A	N/A	N/A
Percentage point difference between offer rate and average offer rate	Asian	N/A	N/A	N/A	N/A	N/A	N/A
	Black	N/A	N/A	N/A	N/A	N/A	N/A
	Mixed	N/A	N/A	N/A	N/A	N/A	N/A
	White	0.1	0.3	0.1	0.0	0.1	0.0
	Other	N/A	N/A	N/A	N/A	N/A	N/A
Contribution of group to the average offer rate	Asian	N/A	0.142	0.060	0.161	N/A	0.088
	Black	0.224	0.217	0.062	0.079	0.063	N/A
	Mixed	0.213	0.104	0.222	0.247	0.163	0.196
	White	0.983	0.973	0.964	0.975	0.969	0.974
	Other	N/A	N/A	N/A	N/A	N/A	N/A

P.13 18 year old offer rate by ethnic group

Note: The line for a group is not plotted when that group made fewer than 10 applications in any of the years from 2011-2016.

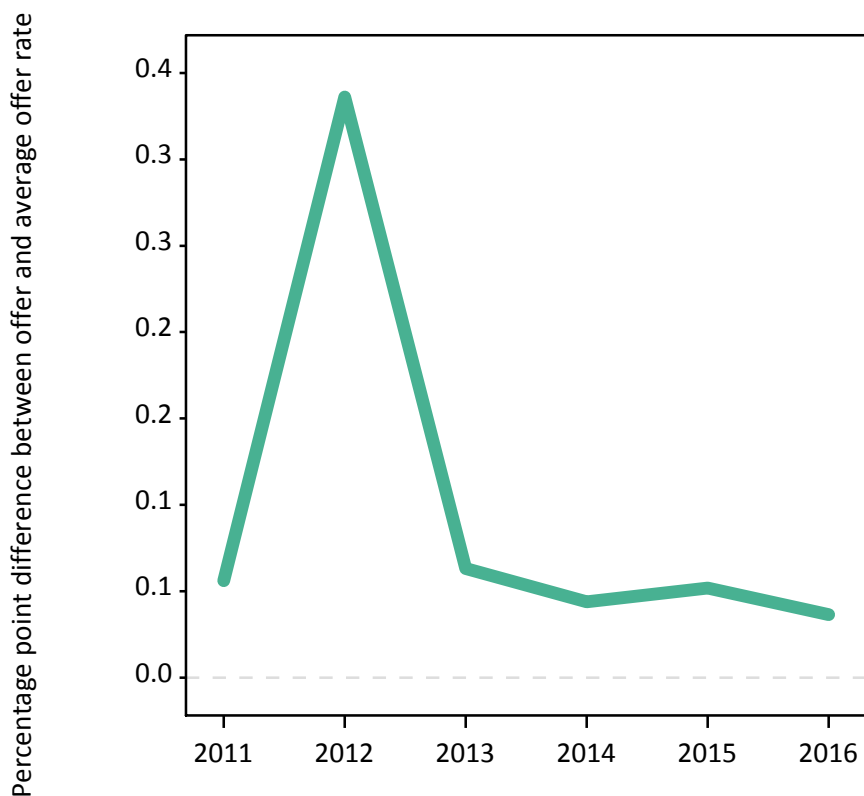
- Asian
- Black
- Mixed
- White
- Other



P.14 Percentage point difference between 18 year old offer rate and average offer rate by ethnic group

Note: The line for a group is not plotted when that group made fewer than 50 applications in any of the years from 2011-2016.

- Asian
- Black
- Mixed
- White
- Other



P.15 Applicants (all ages)

Statistic	2011	2012	2013	2014	2015	2016
June deadline applicants	2,720	2,715	2,665	2,370	2,020	1,875
Placed June deadline applicants	740	700	765	705	695	670
All placed applicants	795	785	805	760	760	720

P.16 Applications (all ages)

Statistic	2011	2012	2013	2014	2015	2016
June deadline applications	3,360	3,285	3,270	3,010	2,640	2,265
Offers	2,015	2,225	2,665	2,640	2,275	1,895
Offer rate	59.9%	67.7%	81.6%	87.7%	86.2%	83.7%

P.17 Applicants (all ages) by sex

Statistic	Sex	2011	2012	2013	2014	2015	2016
June deadline applicants	Men	1,250	1,150	1,115	1,075	1,005	940
	Women	1,465	1,565	1,550	1,295	1,010	935
Placed June deadline applicants	Men	330	285	335	330	350	355
	Women	410	415	430	370	345	315
All placed applicants	Men	350	315	350	360	375	380
	Women	445	470	450	400	385	340

P.18 Applications (all ages) by sex

Statistic	Sex	2011	2012	2013	2014	2015	2016
June deadline applications	Men	1,600	1,435	1,425	1,390	1,335	1,155
	Women	1,765	1,855	1,845	1,620	1,305	1,110
Offers	Men	985	1,005	1,175	1,235	1,160	975
	Women	1,025	1,220	1,490	1,405	1,115	920
Offer rate	Men	61.8%	70.1%	82.6%	88.9%	87.0%	84.3%
	Women	58.2%	65.7%	80.7%	86.6%	85.4%	83.1%

P.19 Applicants (all ages) by POLAR3 quintile

Statistic	POLAR3 quintile	2011	2012	2013	2014	2015	2016
June deadline applicants	Quintile 1	475	475	470	450	365	335
	Quintile 2	600	575	565	515	435	400
	Quintile 3	650	620	605	505	455	440
	Quintile 4	580	635	615	535	460	415
	Quintile 5	410	410	395	360	300	270
Placed June deadline applicants	Quintile 1	150	135	155	145	130	130
	Quintile 2	160	135	170	160	150	150
	Quintile 3	175	175	170	140	175	160
	Quintile 4	160	165	180	165	155	145
	Quintile 5	95	90	90	95	80	75
All placed applicants	Quintile 1	165	150	160	160	145	135
	Quintile 2	170	150	180	175	165	160
	Quintile 3	190	190	175	150	185	175
	Quintile 4	165	190	190	170	170	155
	Quintile 5	100	110	100	105	95	85

P.20 Applications (all ages) by POLAR3 quintile

Statistic	POLAR3 quintile	2011	2012	2013	2014	2015	2016
June deadline applications	Quintile 1	635	630	625	630	510	425
	Quintile 2	710	695	695	685	585	495
	Quintile 3	820	740	755	630	620	520
	Quintile 4	715	765	750	650	570	500
	Quintile 5	470	450	440	410	350	300
Offers	Quintile 1	365	430	490	555	440	365
	Quintile 2	415	465	565	615	500	425
	Quintile 3	485	505	625	555	540	430
	Quintile 4	445	500	610	565	500	425
	Quintile 5	295	320	370	350	295	225
Offer rate	Quintile 1	57.8%	67.8%	78.7%	87.9%	86.4%	86.1%
	Quintile 2	58.6%	67.0%	81.6%	89.5%	85.2%	85.9%
	Quintile 3	59.0%	68.3%	82.9%	87.5%	87.1%	82.9%
	Quintile 4	62.1%	65.4%	81.7%	87.0%	87.5%	84.9%
	Quintile 5	62.9%	71.4%	83.3%	85.4%	84.5%	75.9%

P.21 Applicants (all ages) by ethnic group

Statistic	Ethnic group	2011	2012	2013	2014	2015	2016
June deadline applicants	Asian	20	25	20	15	15	20
	Black	35	35	45	40	25	25
	Mixed	55	50	50	45	40	45
	White	2,605	2,590	2,530	2,255	1,920	1,770
	Other	5	5	5	5	5	5
Placed June deadline applicants	Asian	5	0	5	5	5	5
	Black	5	0	5	10	5	10
	Mixed	10	10	15	15	10	15
	White	720	680	740	670	670	635
	Other	0	0	0	0	0	0
All placed applicants	Asian	5	0	5	5	5	10
	Black	5	5	5	10	5	15
	Mixed	10	15	15	20	15	15
	White	775	760	775	720	730	680
	Other	0	0	0	0	0	0

P.22 Applications (all ages) by ethnic group

Statistic	Ethnic group	2011	2012	2013	2014	2015	2016
June deadline applications	Asian	20	25	30	20	15	25
	Black	35	40	45	40	30	30
	Mixed	55	60	60	55	45	50
	White	3,245	3,150	3,120	2,875	2,525	2,150
	Other	5	5	10	10	10	5
Offers	Asian	10	10	20	15	15	20
	Black	15	25	35	30	25	25
	Mixed	30	35	50	45	35	45
	White	1,955	2,145	2,545	2,525	2,180	1,795
	Other	0	5	10	5	5	5
Offer rate	Asian	42.1%	40.7%	75.9%	100.0%	100.0%	75.0%
	Black	41.7%	64.1%	82.2%	82.1%	80.6%	100.0%
	Mixed	57.1%	58.6%	84.5%	81.8%	75.6%	100.0%
	White	60.3%	68.2%	81.6%	87.8%	86.5%	83.6%
	Other	N/A	N/A	N/A	N/A	N/A	N/A

Technical Notes and Definitions

UCAS undergraduate scheme

Adjustment

Adjustment allows applicants who have met and exceeded the terms of their conditional firm offer to seek and find a place at another provider whilst keeping their place at their original firm choice provider.

Clearing

Clearing is a route for applicants that are not placed and holding no offers to find a place on courses with vacancies.

Cycle year

The UCAS application cycle which runs from September to October the following year. For example the 2016 cycle runs from September 2015 through to October 2016.

End of cycle

The point in the cycle to which the numbers in this report refer, and the point at which the cycle is closed such that no more applications or offers can be made, and no more applicants can be placed. Numbers reported at the end of cycle exclude information on a small number of applicants who cancelled during the cycle.

Extra

Applicants who are unsuccessful in obtaining an offer or decline all offers may be eligible to apply through Extra, where they can apply to one further course at a time. Extra operates from 25 February until early July. It provides applicants who are eligible the possibility of obtaining an offer before exam results are published and Clearing starts.

June 30 deadline

The deadline for main scheme applications. Applicants who apply after this date will go directly into Clearing.

Record of Prior Acceptance (RPA)

RPA is an acceptance route used when a provider informs UCAS of applicants it has accepted outside of the normal application process (e.g. individuals who have applied directly to the provider).

Reporting groups

Ethnic group

High level grouping of ethnic origin as declared by the applicant: 'White', 'Black', 'Asian', 'Mixed', 'Other', 'Unknown'. Applicants who declare themselves as 'Unknown' ethnic origin are not reported in these tables, but are included in the associated csv data file.

POLAR3 quintile

Developed by HEFCE, POLAR3 classifies small areas across the UK into five groups according to their level of young participation in Higher Education. Each of these groups represents around 20 per cent of young people and is ranked from Quintile 1 (areas with the lowest young participation rates, considered as the most disadvantaged) to Quintile 5 (highest young participation rates, considered most advantaged). POLAR3 is based on the participation rates of young people between 2005 and 2009 who entered Higher Education between 2005-06 and 2010-11, therefore is most suitable for applicants aged 19 and under. These groups are assigned using the postcode declared by the applicant at the time of their application. If a UK postcode is invalid, considered unsafe for measurement or there is no link to Census geography possible then the applicant is not assigned to a quintile. Applicants with no POLAR3 quintile are not reported.

Sex

Sex as declared by the applicant.

SIMD quintile

Scottish index of multiple deprivation (SIMD) for 2012 identifies small area concentrations of multiple deprivation across all of Scotland, providing a relative measure of deprivation amongst 6505 small areas (data zones) based on 7 socio-economic domains. These small areas are classified into five groups ranked from Quintile 1 (considered the most deprived) to Quintile 5 (considered least deprived), with equal populations in each quintile. Quintiles are assigned using the postcode declared by the applicant, applicants declaring invalid postcodes are classified as 'Not assigned' and are not reported.

SIMD is only defined for applicants domiciled in Scotland, therefore any applicants domiciled outside of Scotland cannot be assigned to an SIMD quintile and so are not reported for this measure.

SIMD is only reported for providers in Scotland. Application and entry rates by SIMD are reported in the 2016 End of Cycle Report and the 2016 cycle January deadline application rate report.

Statistics reported in the tables

All placed applicants

The number of applicants placed for entry into higher education at the provider through one of their choices, including any choices made through Extra, or via Adjustment, Clearing or RPA.

All placed applicants per 10,000 population

The number of total UK domiciled 18 year old placed applicants for entry into higher education at the provider divided by the number of UK 18 year olds in the population, multiplied by 10,000. This gives the number of 18 year olds, for every 10,000 in the population, that were placed at the provider through one of their choices, including any choices made through Extra, or via Adjustment, Clearing or RPA. It is an alternative way of expressing the entry rate to a provider. By referencing the underlying population this statistic shows how the number of placed applicants is changing in relation to the available pool of potential applicants and so gives the chance that somebody from the group will be placed at a provider.

This statistic is only reported for 18 year olds.

Average offer rate

The offer rate that you might expect if the predicted grades and subject choice of applicants were the only factors that influenced whether an applicant was made an offer by the provider. The average offer rate is calculated by dividing applicants according to their specific combination of grades (for A levels the best three predicted grades are used, for BTECs, International Baccalaureate and Scottish Highers and Advanced Highers, predicted grades along with any grades already achieved upon applying are used) and subject choice. For each combination the number of main scheme offers is divided by the number of main scheme applications, to give an overall offer rate. This is then multiplied by the number of applications made by the group for which the average offer rate is being calculated (for example POLAR3 quintile 1), to give an average number of offers for that group. These average number of offers are then added together across all combinations of predicted grade and subject and divided by the number of main scheme applications from the group to give the average offer rate.

The average offer rate does not attempt to control for any other factors that may play a part in the decision to make an offer, such as the subject of the qualifications studied, their relevance to a course, or the grade in each subject; higher numbers of A levels being studied; the exact profile of grades predicted; personal statements; teacher references; interviews; or any other criteria (such as work experience or portfolios) that may be part of the admissions decision.

This statistic is only reported for 18 year olds.

Contribution of group to the average offer rate

The way in which the average offer rate is defined means that the pattern of application and offers of a group (for example POLAR3 quintile 1) will always contribute, in part, to the average offer rate for that group. When this contribution is large, the average offer rate will mainly reflect the patterns for the group, meaning that the value of the average offer rate will be similar to the offer rate, the percentage point difference statistic will be small, and any real difference between the offer rate and what might be expected given the predicted grades and subject choices of the applicants will be difficult to detect.

Values of the contribution of group to the average offer rate range between 0 and 1. The closer the value is to 1 the greater the contribution a group makes to its own average offer rate.

This statistic is only reported for 18 year olds.

Placed June deadline applicants

An applicant who has been placed for entry into higher education at the provider through a June deadline application.

Placed June deadline applicants per 10,000 population

The number of UK domiciled 18 year old placed June deadline applicants at the provider divided by the number of UK 18 year olds in the population, multiplied by 10,000. This gives the number of 18 year olds, for every 10,000 in the population, that were placed at the provider through one of their June deadline applications. It is an alternative way of expressing the entry rate to a provider, but for placed June deadline applicants only. By referencing the underlying population this statistic shows how the number of placed June deadline applicants is changing in relation to the available pool of potential 18 year old applicants and so gives the chance that somebody from the group will be placed at a provider through a June deadline application.

This statistic is only reported for 18 year olds.

June deadline applications

An application (or choice) to a course in higher education to the provider that is made by the June 30 deadline. Each applicant can make up to five choices this way. The number of June deadline applications does not include choices made through the following routes: Clearing, Extra, Adjustment and RPAs. Applications made to October deadline courses received after the October deadline are not included in these statistics.

June deadline applicants

The number of applicants that made at least one application to the provider by the June 30 deadline.

June deadline applicants per 10,000 population

The number of UK domiciled 18 year old June deadline applicants to the provider divided by the number of UK 18 year olds in the population, multiplied by 10,000. This gives the number of 18 year olds, for every 10,000 in the population, who applied by the June 30 deadline. It is equivalent to the application rate. By referencing the underlying population this statistic shows how the number of June deadline applicants is changing in relation to the available pool of potential 18 year old applicants and so gives the chance that somebody from the group will apply to a provider by the June 30 deadline.

This statistic is only reported for 18 year olds.

Offers

An offer is defined as a provider's decision in response to an application to offer a place to an applicant, often subject to the applicant satisfying academic and/or other criteria, via a June deadline application (i.e. does not cover choices made through the following routes: Clearing, Extra, Adjustment and RPAs).

Offer rate

The number of offers made divided by the number of June deadline applications. This gives the proportion of all June deadline applications to the provider that received an offer.

Percentage point difference between offer rate and average offer rate

The offer rate minus the average offer rate.

The percentage point difference can be compared to the expected range of statistical variation resulting from the calculation of the average offer rate using the Average Offer Rate Lookup Table. Where the value of the percentage point difference lies outside of this range, the percentage point difference may be considered to represent a real difference between the offer rate and the average offer rate.

Other definitions

Age

This analysis uses country-specific age definitions that align with the cut off points for school and college cohorts within the different administrations of the UK. For England and Wales, ages are defined on the 31 August, for Northern Ireland on the 1 July and for Scotland on the 28 February the following year. Defining ages in this way matches the assignment of children to school cohorts. For applicants outside of the UK a cohort cut off of 31 August has been used.

Provider

A higher education provider - a university or college.

UK domiciled

Declared area of permanent residence within England, Northern Ireland, Scotland and Wales. Applicants from the Channel Islands and Isle of Man are not included.