

## S72 Staffordshire University

**Cycle years:** 2011 - 2016

**Cycle Reference Point:** End of Cycle

**Applicant coverage:** UK domiciled

**Reporting groups:** Sex, POLAR3, ethnic group

**Applicant statistics:** June deadline applicants, placed June deadline applicants, all placed applicants, June deadline applicants per 10,000 population, placed June deadline applicants per 10,000 population, all placed applicants per 10,000 population

**Application statistics:** June deadline applications, offers, offer rate, average offer rate, percentage point difference between offer rate and average offer rate, contribution of group to the average offer rate

**Non-disclosure controls:** To avoid the disclosure of information about any individual the following measures are taken

- Applicants, placed applicants, applications and offers are rounded to the nearest 5.
- Applicants/placed applicants per 10,000 population figures are reported as 0 if the applicant/placed applicant figures are rounded to 0.
- All statistics related to the offer rate are not reported when the number of applications for a group is less than 10. The percentage point difference between the offer rate and the average offer rate is not reported when the number of applications for a group is less than 50.
- Offer rates are reported as 0% if there are fewer than 5 offers, and 100% if the number of offers is within 5 of the number of applications. When the offer rate is reported as 0% or 100%, it is reported in italics.

### Contents:

18 year old applicants:	P.1
18 year old applications:	P.2
18 year old applicants by sex:	P.3
18 year old applications by sex:	P.4
18 year old applicants by POLAR3 quintile:	P.7
18 year old applications by POLAR3 quintile:	P.8
18 year old applicants by ethnic group:	P.11
18 year old applications by ethnic group:	P.12
Applicants (all ages):	P.15
Applications (all ages):	P.16
Applicants (all ages) by sex:	P.17
Applications (all ages) by sex:	P.18
Applicants (all ages) by POLAR3 quintile:	P.19
Applications (all ages) by POLAR3 quintile:	P.20
Applicants (all ages) by ethnic group:	P.21
Applications (all ages) by ethnic group:	P.22

## P.1 18 year old applicants

Statistic	2011	2012	2013	2014	2015	2016
June deadline applicants	8,380	7,550	6,570	5,715	5,445	5,385
Placed June deadline applicants	1,155	1,200	1,115	1,010	1,040	960
All placed applicants	1,780	1,490	1,395	1,240	1,250	1,180
June deadline applicants per 10,000 population	108.8	97.6	86.3	75.9	71.1	71.9
Placed June deadline applicants per 10,000	15.0	15.5	14.6	13.4	13.6	12.8
All placed applicants per 10,000 population	23.1	19.3	18.3	16.4	16.3	15.7

## P.2 18 year old applications

Statistic	2011	2012	2013	2014	2015	2016
June deadline applications	9,430	8,240	7,170	6,250	5,920	5,885
Offers	4,365	6,050	5,585	4,965	4,850	4,840
Offer rate	46.3%	73.4%	77.9%	79.4%	81.9%	82.3%

### P.3 18 year old applicants by sex

Statistic	Sex	2011	2012	2013	2014	2015	2016
June deadline applicants	Men	4,330	3,620	3,185	2,715	2,445	2,500
	Women	4,050	3,930	3,385	2,995	3,000	2,890
Placed June deadline applicants	Men	660	670	605	560	555	510
	Women	495	530	510	455	490	455
All placed applicants	Men	1,010	800	720	670	650	615
	Women	770	690	675	565	605	565
June deadline applicants per 10,000 population	Men	110.0	91.3	81.5	70.2	62.3	65.0
	Women	107.5	104.2	91.4	81.8	80.2	79.0
Placed June deadline applicants per 10,000 population	Men	16.7	16.9	15.5	14.4	14.1	13.3
	Women	13.1	14.0	13.7	12.4	13.1	12.4
All placed applicants per 10,000 population	Men	25.6	20.2	18.4	17.3	16.5	16.0
	Women	20.5	18.3	18.3	15.5	16.2	15.5

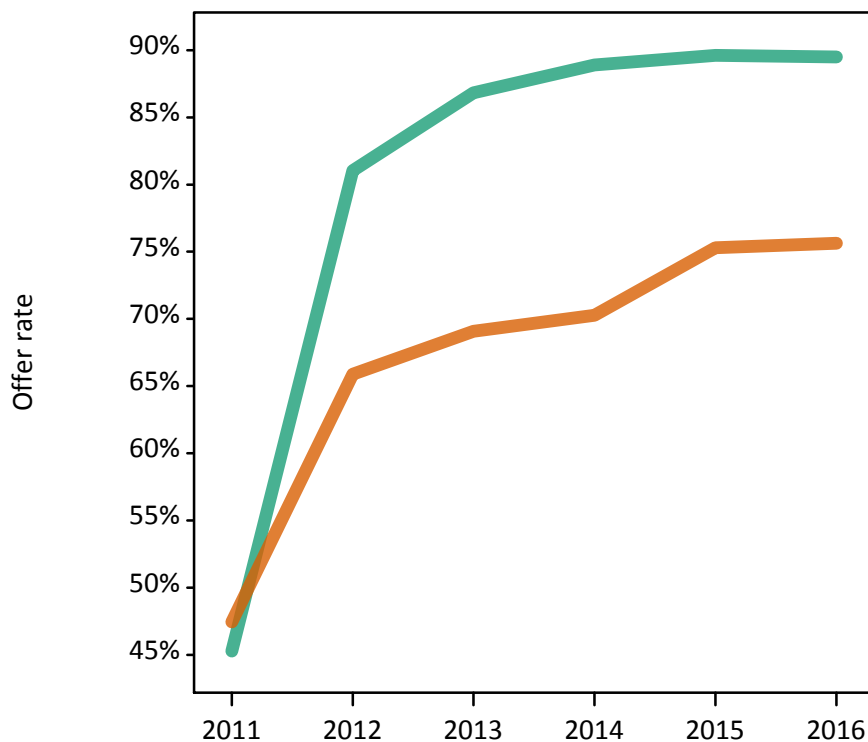
### P.4 18 year old applications by sex

Statistic	Sex	2011	2012	2013	2014	2015	2016
June deadline applications	Men	5,020	4,075	3,565	3,065	2,730	2,810
	Women	4,410	4,165	3,605	3,185	3,190	3,075
Offers	Men	2,270	3,305	3,095	2,725	2,450	2,515
	Women	2,090	2,745	2,490	2,240	2,400	2,325
Offer rate	Men	45.3%	81.0%	86.8%	88.9%	89.6%	89.5%
	Women	47.4%	65.9%	69.1%	70.3%	75.3%	75.6%
Average offer rate	Men	46.1%	80.9%	86.6%	88.4%	89.6%	89.0%
	Women	46.5%	66.1%	69.3%	70.8%	75.3%	76.1%
Percentage point difference between offer rate and average offer rate	Men	-0.8	0.2	0.2	0.5	-0.0	0.5
	Women	0.9	-0.2	-0.2	-0.5	0.0	-0.5
Contribution of group to the average offer rate	Men	0.702	0.675	0.703	0.704	0.681	0.682
	Women	0.661	0.681	0.707	0.715	0.727	0.709

### P.5 18 year old offer rate by sex

Note: The line for a group is not plotted when that group made fewer than 10 applications in any of the years from 2011-2016.

Men  
Women



### P.6 Percentage point difference between 18 year old offer rate and average offer rate by sex

Note: The line for a group is not plotted when that group made fewer than 50 applications in any of the years from 2011-2016.

Men  
Women



## P.7 18 year old applicants by POLAR3 quintile

Statistic	POLAR3 quintile	2011	2012	2013	2014	2015	2016
June deadline applicants	Quintile 1	1,510	1,360	1,235	1,155	1,150	1,125
	Quintile 2	1,740	1,655	1,475	1,345	1,255	1,215
	Quintile 3	1,745	1,595	1,405	1,190	1,115	1,135
	Quintile 4	1,760	1,480	1,265	1,050	1,030	1,015
	Quintile 5	1,615	1,440	1,185	960	885	880
Placed June deadline applicants	Quintile 1	245	245	230	220	225	225
	Quintile 2	245	275	255	240	220	210
	Quintile 3	220	235	230	205	225	180
	Quintile 4	235	225	220	185	195	180
	Quintile 5	205	210	180	160	175	160
All placed applicants	Quintile 1	335	310	300	275	280	275
	Quintile 2	370	340	325	300	280	265
	Quintile 3	355	305	275	245	250	225
	Quintile 4	365	275	265	225	240	210
	Quintile 5	350	260	230	190	200	200
June deadline applicants per 10,000 population	Quintile 1	104.9	95.5	88.5	83.1	82.1	83.3
	Quintile 2	115.7	110.3	100.0	91.8	84.6	84.2
	Quintile 3	113.3	103.2	92.1	79.0	72.6	75.4
	Quintile 4	112.2	93.2	80.8	68.2	65.7	65.7
	Quintile 5	97.5	85.8	71.6	58.9	52.8	53.3
Placed June deadline applicants per 10,000 population	Quintile 1	17.0	17.3	16.4	15.7	16.0	16.8
	Quintile 2	16.2	18.5	17.4	16.4	14.9	14.7
	Quintile 3	14.2	15.2	15.0	13.6	14.7	12.0
	Quintile 4	15.1	14.2	14.0	12.1	12.5	11.6
	Quintile 5	12.5	12.6	10.9	9.7	10.5	9.7
All placed applicants per 10,000 population	Quintile 1	23.2	21.7	21.7	19.8	19.8	20.4
	Quintile 2	24.7	22.6	22.0	20.6	18.9	18.5
	Quintile 3	23.0	19.8	18.0	16.1	16.3	15.0
	Quintile 4	23.3	17.3	17.1	14.7	15.2	13.6
	Quintile 5	21.2	15.5	13.8	11.5	12.1	12.0

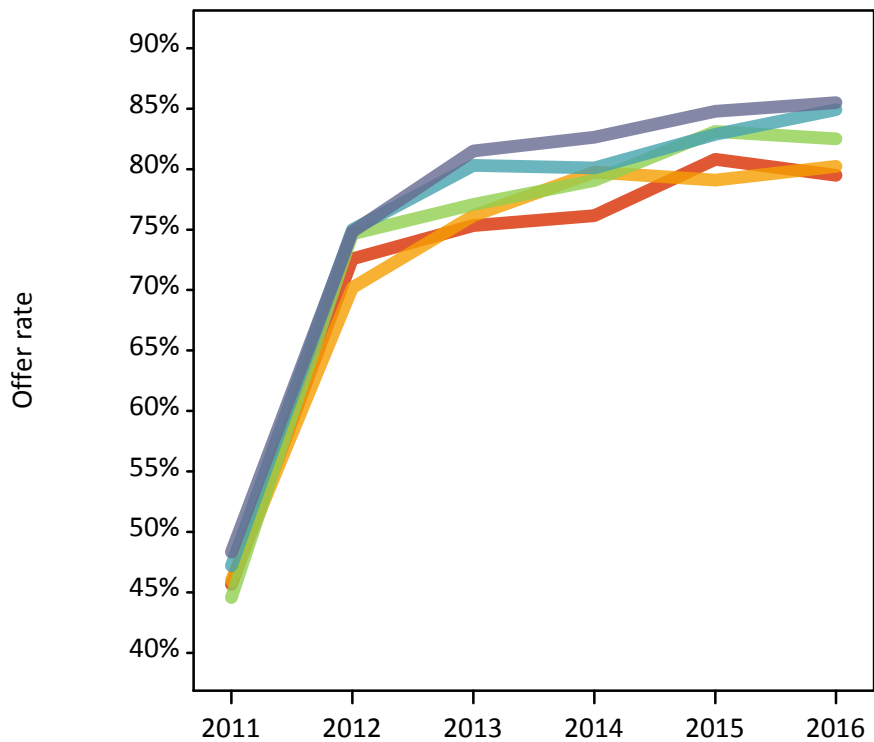
## P.8 18 year old applications by POLAR3 quintile

Statistic	POLAR3 quintile	2011	2012	2013	2014	2015	2016
June deadline applications	Quintile 1	1,795	1,545	1,380	1,280	1,275	1,255
	Quintile 2	1,980	1,805	1,640	1,490	1,375	1,345
	Quintile 3	1,930	1,725	1,525	1,300	1,215	1,215
	Quintile 4	1,965	1,600	1,345	1,135	1,105	1,100
	Quintile 5	1,740	1,540	1,270	1,030	940	950
Offers	Quintile 1	820	1,120	1,040	975	1,030	995
	Quintile 2	910	1,265	1,250	1,190	1,090	1,080
	Quintile 3	860	1,290	1,175	1,025	1,010	1,005
	Quintile 4	925	1,200	1,080	910	915	935
	Quintile 5	840	1,155	1,035	850	795	815
Offer rate	Quintile 1	45.7%	72.6%	75.3%	76.2%	80.8%	79.5%
	Quintile 2	46.0%	70.2%	76.1%	79.8%	79.1%	80.2%
	Quintile 3	44.6%	74.6%	77.1%	79.1%	83.1%	82.5%
	Quintile 4	47.2%	75.0%	80.3%	80.1%	82.9%	84.9%
	Quintile 5	48.3%	74.8%	81.5%	82.6%	84.8%	85.5%
Average offer rate	Quintile 1	45.8%	72.4%	77.0%	77.8%	80.8%	81.4%
	Quintile 2	46.1%	71.2%	77.3%	78.7%	79.1%	81.6%
	Quintile 3	45.1%	74.2%	77.2%	80.1%	82.0%	81.1%
	Quintile 4	46.9%	73.9%	78.5%	79.9%	83.9%	84.2%
	Quintile 5	47.9%	75.5%	79.9%	81.0%	85.0%	83.5%
Percentage point difference between offer rate and average offer rate	Quintile 1	-0.1	0.2	-1.6	-1.6	0.0	-1.9
	Quintile 2	-0.1	-1.0	-1.2	1.0	-0.0	-1.4
	Quintile 3	-0.5	0.4	-0.1	-1.1	1.1	1.4
	Quintile 4	0.3	1.1	1.8	0.2	-1.1	0.7
	Quintile 5	0.4	-0.7	1.6	1.7	-0.2	2.0
Contribution of group to the average offer rate	Quintile 1	0.273	0.277	0.278	0.300	0.298	0.298
	Quintile 2	0.280	0.295	0.305	0.323	0.306	0.309
	Quintile 3	0.276	0.291	0.285	0.291	0.291	0.288
	Quintile 4	0.294	0.276	0.277	0.288	0.284	0.275
	Quintile 5	0.273	0.274	0.289	0.276	0.263	0.268

### P.9 18 year old offer rate by POLAR3 quintile

Note: The line for a group is not plotted when that group made fewer than 10 applications in any of the years from 2011-2016.

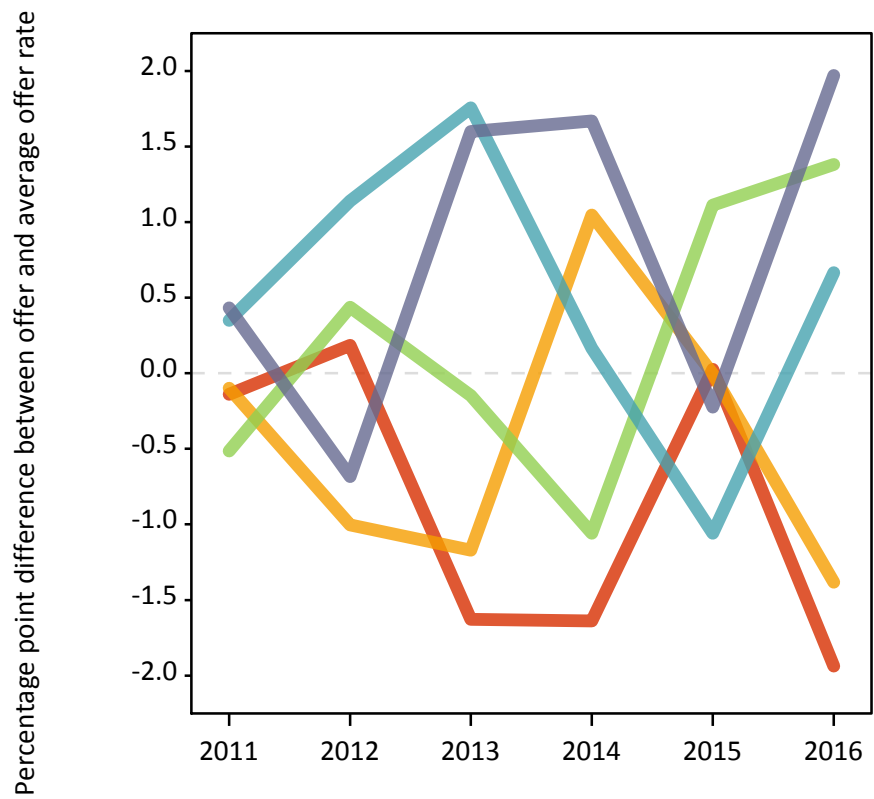
- Quintile 1
- Quintile 2
- Quintile 3
- Quintile 4
- Quintile 5



### P.10 Percentage point difference between 18 year old offer rate and average offer rate by POLAR3 quintile

Note: The line for a group is not plotted when that group made fewer than 50 applications in any of the years from 2011-2016.

- Quintile 1
- Quintile 2
- Quintile 3
- Quintile 4
- Quintile 5



## P.11 18 year old applicants by ethnic group

Statistic	Ethnic group	2011	2012	2013	2014	2015	2016
June deadline applicants	Asian	650	705	645	570	505	565
	Black	330	380	360	275	265	250
	Mixed	290	250	235	205	200	205
	White	7,050	6,155	5,275	4,605	4,410	4,310
	Other	35	40	45	40	40	35
Placed June deadline applicants	Asian	70	90	75	60	70	55
	Black	30	40	40	35	45	25
	Mixed	20	40	40	30	40	35
	White	1,025	1,020	955	880	880	840
	Other	5	5	5	5	10	0
All placed applicants	Asian	185	130	105	90	95	80
	Black	95	65	60	55	60	35
	Mixed	40	55	45	35	50	50
	White	1,445	1,230	1,180	1,050	1,035	1,000
	Other	5	5	5	5	10	10
June deadline applicants per 10,000 population	Asian	103.0	108.6	97.9	84.0	71.6	78.2
	Black	121.1	134.9	120.6	91.4	83.9	79.3
	Mixed	118.9	96.7	86.9	70.9	65.2	65.8
	White	108.9	95.3	83.8	74.7	70.8	71.3
	Other	45.7	45.2	49.6	40.8	43.6	34.2
Placed June deadline applicants per 10,000 population	Asian	11.3	13.6	11.4	8.8	9.9	7.5
	Black	10.6	14.2	13.1	11.5	13.5	7.7
	Mixed	7.8	16.1	14.4	10.4	12.6	11.4
	White	15.8	15.8	15.2	14.3	14.1	13.9
	Other	4.9	4.5	6.6	3.2	8.3	0.0
All placed applicants per 10,000 population	Asian	29.4	20.1	15.9	13.0	13.3	10.8
	Black	35.5	23.8	20.2	17.5	18.5	11.5
	Mixed	16.1	20.3	17.0	12.9	15.6	15.9
	White	22.3	19.1	18.7	17.0	16.6	16.6
	Other	4.9	7.9	7.7	7.5	9.3	8.1



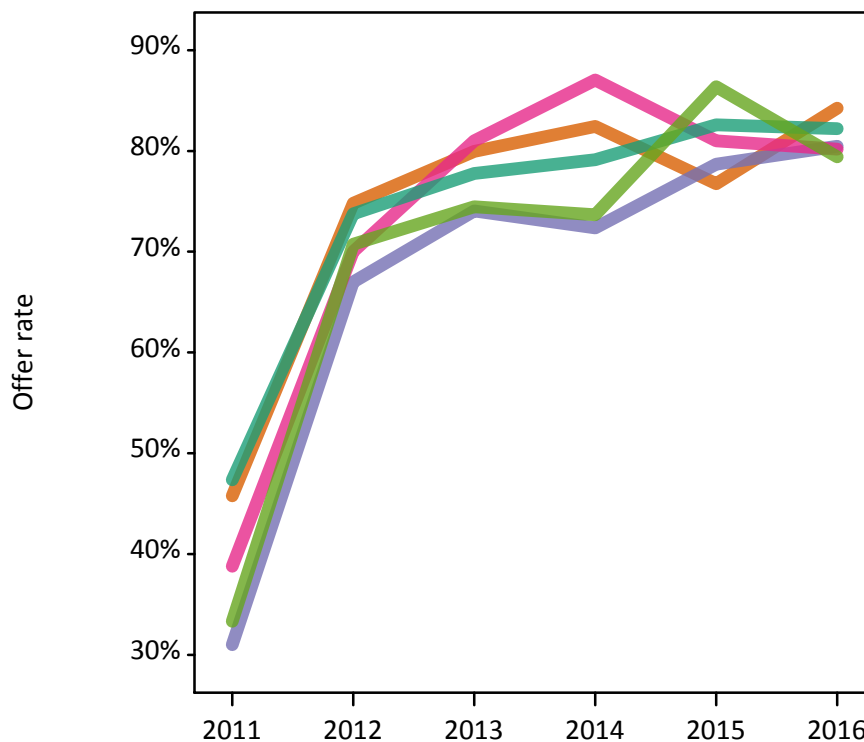
## P.12 18 year old applications by ethnic group

Statistic	Ethnic group	2011	2012	2013	2014	2015	2016
June deadline applications	Asian	710	745	695	610	545	610
	Black	340	395	370	285	275	255
	Mixed	310	260	260	215	215	225
	White	7,995	6,780	5,790	5,085	4,820	4,730
	Other	40	40	45	40	45	35
Offers	Asian	325	560	555	500	420	515
	Black	105	265	275	205	220	205
	Mixed	120	180	210	190	175	180
	White	3,785	5,000	4,505	4,025	3,980	3,890
	Other	15	30	35	30	40	25
Offer rate	Asian	45.8%	74.8%	80.0%	82.4%	76.7%	84.3%
	Black	31.0%	67.0%	74.1%	72.4%	78.7%	80.5%
	Mixed	38.8%	70.0%	81.0%	87.0%	81.0%	80.2%
	White	47.4%	73.8%	77.8%	79.1%	82.6%	82.2%
	Other	33.3%	70.7%	74.5%	73.7%	86.4%	79.4%
Average offer rate	Asian	49.2%	74.3%	78.8%	79.4%	75.9%	81.0%
	Black	42.1%	70.6%	74.6%	75.9%	78.9%	79.6%
	Mixed	46.0%	71.4%	79.5%	82.6%	81.5%	80.7%
	White	46.3%	73.5%	78.0%	79.5%	82.7%	82.6%
	Other	37.5%	71.0%	72.8%	76.1%	81.3%	81.1%
Percentage point difference between offer rate and average offer rate	Asian	-3.4	0.5	1.2	3.0	0.8	3.3
	Black	-11.1	-3.6	-0.5	-3.5	-0.2	0.8
	Mixed	-7.2	-1.4	1.5	4.4	-0.4	-0.6
	White	1.1	0.2	-0.2	-0.4	-0.1	-0.4
	Other	N/A	N/A	N/A	N/A	N/A	N/A
Contribution of group to the average offer rate	Asian	0.223	0.238	0.242	0.245	0.230	0.257
	Black	0.124	0.145	0.142	0.137	0.133	0.151
	Mixed	0.132	0.112	0.134	0.171	0.143	0.135
	White	0.871	0.850	0.838	0.844	0.841	0.836
	Other	0.129	0.088	0.086	0.064	0.108	0.129

### P.13 18 year old offer rate by ethnic group

Note: The line for a group is not plotted when that group made fewer than 10 applications in any of the years from 2011-2016.

- Asian
- Black
- Mixed
- White
- Other



### P.14 Percentage point difference between 18 year old offer rate and average offer rate by ethnic group

Note: The line for a group is not plotted when that group made fewer than 50 applications in any of the years from 2011-2016.

- Asian
- Black
- Mixed
- White
- Other



### P.15 Applicants (all ages)

Statistic	2011	2012	2013	2014	2015	2016
June deadline applicants	16,935	15,425	13,945	12,655	11,920	11,310
Placed June deadline applicants	2,465	2,760	2,630	2,410	2,405	2,370
All placed applicants	3,780	3,700	3,625	3,240	3,200	3,160

### P.16 Applications (all ages)

Statistic	2011	2012	2013	2014	2015	2016
June deadline applications	19,395	17,175	15,470	14,000	13,125	12,495
Offers	7,525	10,600	10,125	9,090	8,975	8,735
Offer rate	38.8%	61.7%	65.4%	64.9%	68.4%	69.9%

### P.17 Applicants (all ages) by sex

Statistic	Sex	2011	2012	2013	2014	2015	2016
June deadline applicants	Men	8,465	7,325	6,395	5,580	5,145	4,910
	Women	8,470	8,100	7,550	7,075	6,775	6,400
Placed June deadline applicants	Men	1,295	1,485	1,410	1,265	1,240	1,190
	Women	1,170	1,280	1,215	1,145	1,165	1,180
All placed applicants	Men	2,050	1,955	1,865	1,670	1,595	1,595
	Women	1,735	1,750	1,755	1,570	1,605	1,565

### P.18 Applications (all ages) by sex

Statistic	Sex	2011	2012	2013	2014	2015	2016
June deadline applications	Men	9,920	8,345	7,275	6,315	5,810	5,570
	Women	9,475	8,830	8,195	7,685	7,315	6,925
Offers	Men	3,795	5,895	5,645	4,960	4,660	4,485
	Women	3,730	4,705	4,480	4,130	4,315	4,250
Offer rate	Men	38.2%	70.6%	77.6%	78.5%	80.2%	80.5%
	Women	39.4%	53.3%	54.7%	53.7%	59.0%	61.4%

### P.19 Applicants (all ages) by POLAR3 quintile

Statistic	POLAR3 quintile	2011	2012	2013	2014	2015	2016
June deadline applicants	Quintile 1	3,375	3,195	2,875	2,855	2,725	2,605
	Quintile 2	3,705	3,450	3,280	2,985	2,815	2,635
	Quintile 3	3,540	3,260	2,960	2,680	2,405	2,340
	Quintile 4	3,275	2,810	2,550	2,150	2,105	1,965
	Quintile 5	3,005	2,660	2,250	1,950	1,840	1,720
Placed June deadline applicants	Quintile 1	550	630	585	610	580	625
	Quintile 2	550	630	655	560	545	530
	Quintile 3	490	575	515	475	485	460
	Quintile 4	480	500	495	430	440	405
	Quintile 5	390	415	375	330	355	340
All placed applicants	Quintile 1	785	835	855	825	800	830
	Quintile 2	840	865	900	775	735	730
	Quintile 3	765	800	710	635	625	605
	Quintile 4	725	650	630	560	570	535
	Quintile 5	655	540	520	440	460	440

### P.20 Applications (all ages) by POLAR3 quintile

Statistic	POLAR3 quintile	2011	2012	2013	2014	2015	2016
June deadline applications	Quintile 1	4,030	3,690	3,250	3,250	3,070	2,925
	Quintile 2	4,265	3,885	3,690	3,320	3,105	2,920
	Quintile 3	4,040	3,620	3,275	2,930	2,625	2,570
	Quintile 4	3,720	3,065	2,785	2,355	2,315	2,155
	Quintile 5	3,305	2,860	2,440	2,115	1,975	1,875
Offers	Quintile 1	1,520	2,135	2,015	1,995	2,015	1,945
	Quintile 2	1,640	2,355	2,360	2,160	2,050	1,950
	Quintile 3	1,515	2,275	2,135	1,865	1,805	1,820
	Quintile 4	1,505	1,985	1,910	1,585	1,660	1,600
	Quintile 5	1,335	1,820	1,695	1,460	1,425	1,380
Offer rate	Quintile 1	37.7%	57.8%	62.0%	61.4%	65.6%	66.6%
	Quintile 2	38.5%	60.6%	64.0%	65.1%	66.1%	66.8%
	Quintile 3	37.5%	62.8%	65.1%	63.7%	68.8%	71.0%
	Quintile 4	40.5%	64.8%	68.6%	67.4%	71.6%	74.2%
	Quintile 5	40.4%	63.6%	69.4%	69.0%	72.2%	73.6%

## P.21 Applicants (all ages) by ethnic group

Statistic	Ethnic group	2011	2012	2013	2014	2015	2016
June deadline applicants	Asian	1,460	1,585	1,455	1,315	1,190	1,120
	Black	1,185	1,280	1,220	1,080	1,065	1,060
	Mixed	595	545	495	475	440	465
	White	13,505	11,835	10,595	9,615	9,060	8,510
	Other	100	125	125	120	115	95
Placed June deadline applicants	Asian	170	230	185	170	165	145
	Black	115	170	165	135	135	140
	Mixed	55	100	90	80	90	90
	White	2,100	2,230	2,155	1,995	1,980	1,980
	Other	15	25	20	20	20	10
All placed applicants	Asian	420	375	305	280	265	240
	Black	300	300	305	255	245	235
	Mixed	105	135	120	110	120	135
	White	2,895	2,835	2,845	2,545	2,510	2,500
	Other	20	40	30	30	30	25

## P.22 Applications (all ages) by ethnic group

Statistic	Ethnic group	2011	2012	2013	2014	2015	2016
June deadline applications	Asian	1,650	1,745	1,565	1,410	1,270	1,220
	Black	1,285	1,385	1,300	1,130	1,130	1,110
	Mixed	655	580	545	510	475	505
	White	15,600	13,270	11,860	10,765	10,055	9,485
	Other	110	140	140	130	120	100
Offers	Asian	635	1,165	1,095	980	865	890
	Black	325	660	685	530	570	530
	Mixed	225	365	360	380	305	345
	White	6,285	8,285	7,860	7,085	7,105	6,860
	Other	30	90	90	85	90	60
Offer rate	Asian	38.4%	66.7%	69.8%	69.3%	68.1%	72.8%
	Black	25.3%	47.6%	52.7%	47.1%	50.4%	47.9%
	Mixed	34.3%	63.0%	66.7%	74.5%	63.5%	68.4%
	White	40.3%	62.4%	66.3%	65.8%	70.6%	72.3%
	Other	26.4%	65.0%	63.3%	65.6%	75.6%	60.0%

## Technical Notes and Definitions

### UCAS undergraduate scheme

#### Adjustment

Adjustment allows applicants who have met and exceeded the terms of their conditional firm offer to seek and find a place at another provider whilst keeping their place at their original firm choice provider.

#### Clearing

Clearing is a route for applicants that are not placed and holding no offers to find a place on courses with vacancies.

#### Cycle year

The UCAS application cycle which runs from September to October the following year. For example the 2016 cycle runs from September 2015 through to October 2016.

#### End of cycle

The point in the cycle to which the numbers in this report refer, and the point at which the cycle is closed such that no more applications or offers can be made, and no more applicants can be placed. Numbers reported at the end of cycle exclude information on a small number of applicants who cancelled during the cycle.

#### Extra

Applicants who are unsuccessful in obtaining an offer or decline all offers may be eligible to apply through Extra, where they can apply to one further course at a time. Extra operates from 25 February until early July. It provides applicants who are eligible the possibility of obtaining an offer before exam results are published and Clearing starts.

#### June 30 deadline

The deadline for main scheme applications. Applicants who apply after this date will go directly into Clearing.

#### Record of Prior Acceptance (RPA)

RPA is an acceptance route used when a provider informs UCAS of applicants it has accepted outside of the normal application process (e.g. individuals who have applied directly to the provider).

### Reporting groups

#### Ethnic group

High level grouping of ethnic origin as declared by the applicant: 'White', 'Black', 'Asian', 'Mixed', 'Other', 'Unknown'. Applicants who declare themselves as 'Unknown' ethnic origin are not reported in these tables, but are included in the associated csv data file.

#### POLAR3 quintile

Developed by HEFCE, POLAR3 classifies small areas across the UK into five groups according to their level of young participation in Higher Education. Each of these groups represents around 20 per cent of young people and is ranked from Quintile 1 (areas with the lowest young participation rates, considered as the most disadvantaged) to Quintile 5 (highest young participation rates, considered most advantaged). POLAR3 is based on the participation rates of young people between 2005 and 2009 who entered Higher Education between 2005-06 and 2010-11, therefore is most suitable for applicants aged 19 and under. These groups are assigned using the postcode declared by the applicant at the time of their application. If a UK postcode is invalid, considered unsafe for measurement or there is no link to Census geography possible then the applicant is not assigned to a quintile. Applicants with no POLAR3 quintile are not reported.

#### Sex

Sex as declared by the applicant.

### **SIMD quintile**

Scottish index of multiple deprivation (SIMD) for 2012 identifies small area concentrations of multiple deprivation across all of Scotland, providing a relative measure of deprivation amongst 6505 small areas (data zones) based on 7 socio-economic domains. These small areas are classified into five groups ranked from Quintile 1 (considered the most deprived) to Quintile 5 (considered least deprived), with equal populations in each quintile. Quintiles are assigned using the postcode declared by the applicant, applicants declaring invalid postcodes are classified as 'Not assigned' and are not reported.

SIMD is only defined for applicants domiciled in Scotland, therefore any applicants domiciled outside of Scotland cannot be assigned to an SIMD quintile and so are not reported for this measure.

SIMD is only reported for providers in Scotland. Application and entry rates by SIMD are reported in the 2016 End of Cycle Report and the 2016 cycle January deadline application rate report.

### **Statistics reported in the tables**

#### **All placed applicants**

The number of applicants placed for entry into higher education at the provider through one of their choices, including any choices made through Extra, or via Adjustment, Clearing or RPA.

#### **All placed applicants per 10,000 population**

The number of total UK domiciled 18 year old placed applicants for entry into higher education at the provider divided by the number of UK 18 year olds in the population, multiplied by 10,000. This gives the number of 18 year olds, for every 10,000 in the population, that were placed at the provider through one of their choices, including any choices made through Extra, or via Adjustment, Clearing or RPA. It is an alternative way of expressing the entry rate to a provider. By referencing the underlying population this statistic shows how the number of placed applicants is changing in relation to the available pool of potential applicants and so gives the chance that somebody from the group will be placed at a provider.

This statistic is only reported for 18 year olds.

#### **Average offer rate**

The offer rate that you might expect if the predicted grades and subject choice of applicants were the only factors that influenced whether an applicant was made an offer by the provider. The average offer rate is calculated by dividing applicants according to their specific combination of grades (for A levels the best three predicted grades are used, for BTECs, International Baccalaureate and Scottish Highers and Advanced Highers, predicted grades along with any grades already achieved upon applying are used) and subject choice. For each combination the number of main scheme offers is divided by the number of main scheme applications, to give an overall offer rate. This is then multiplied by the number of applications made by the group for which the average offer rate is being calculated (for example POLAR3 quintile 1), to give an average number of offers for that group. These average number of offers are then added together across all combinations of predicted grade and subject and divided by the number of main scheme applications from the group to give the average offer rate.

The average offer rate does not attempt to control for any other factors that may play a part in the decision to make an offer, such as the subject of the qualifications studied, their relevance to a course, or the grade in each subject; higher numbers of A levels being studied; the exact profile of grades predicted; personal statements; teacher references; interviews; or any other criteria (such as work experience or portfolios) that may be part of the admissions decision.

This statistic is only reported for 18 year olds.



### Contribution of group to the average offer rate

The way in which the average offer rate is defined means that the pattern of application and offers of a group (for example POLAR3 quintile 1) will always contribute, in part, to the average offer rate for that group. When this contribution is large, the average offer rate will mainly reflect the patterns for the group, meaning that the value of the average offer rate will be similar to the offer rate, the percentage point difference statistic will be small, and any real difference between the offer rate and what might be expected given the predicted grades and subject choices of the applicants will be difficult to detect.

Values of the contribution of group to the average offer rate range between 0 and 1. The closer the value is to 1 the greater the contribution a group makes to its own average offer rate.

This statistic is only reported for 18 year olds.

### Placed June deadline applicants

An applicant who has been placed for entry into higher education at the provider through a June deadline application.

### Placed June deadline applicants per 10,000 population

The number of UK domiciled 18 year old placed June deadline applicants at the provider divided by the number of UK 18 year olds in the population, multiplied by 10,000. This gives the number of 18 year olds, for every 10,000 in the population, that were placed at the provider through one of their June deadline applications. It is an alternative way of expressing the entry rate to a provider, but for placed June deadline applicants only. By referencing the underlying population this statistic shows how the number of placed June deadline applicants is changing in relation to the available pool of potential 18 year old applicants and so gives the chance that somebody from the group will be placed at a provider through a June deadline application.

This statistic is only reported for 18 year olds.

### June deadline applications

An application (or choice) to a course in higher education to the provider that is made by the June 30 deadline. Each applicant can make up to five choices this way. The number of June deadline applications does not include choices made through the following routes: Clearing, Extra, Adjustment and RPAs. Applications made to October deadline courses received after the October deadline are not included in these statistics.

### June deadline applicants

The number of applicants that made at least one application to the provider by the June 30 deadline.

### June deadline applicants per 10,000 population

The number of UK domiciled 18 year old June deadline applicants to the provider divided by the number of UK 18 year olds in the population, multiplied by 10,000. This gives the number of 18 year olds, for every 10,000 in the population, who applied by the June 30 deadline. It is equivalent to the application rate. By referencing the underlying population this statistic shows how the number of June deadline applicants is changing in relation to the available pool of potential 18 year old applicants and so gives the chance that somebody from the group will apply to a provider by the June 30 deadline.

This statistic is only reported for 18 year olds.

### Offers

An offer is defined as a provider's decision in response to an application to offer a place to an applicant, often subject to the applicant satisfying academic and/or other criteria, via a June deadline application (i.e. does not cover choices made through the following routes: Clearing, Extra, Adjustment and RPAs).

### Offer rate

The number of offers made divided by the number of June deadline applications. This gives the proportion of all June deadline applications to the provider that received an offer.

### Percentage point difference between offer rate and average offer rate

The offer rate minus the average offer rate.

The percentage point difference can be compared to the expected range of statistical variation resulting from the calculation of the average offer rate using the Average Offer Rate Lookup Table. Where the value of the percentage point difference lies outside of this range, the percentage point difference may be considered to represent a real difference between the offer rate and the average offer rate.

### Other definitions

#### Age

This analysis uses country-specific age definitions that align with the cut off points for school and college cohorts within the different administrations of the UK. For England and Wales, ages are defined on the 31 August, for Northern Ireland on the 1 July and for Scotland on the 28 February the following year. Defining ages in this way matches the assignment of children to school cohorts. For applicants outside of the UK a cohort cut off of 31 August has been used.

#### Provider

A higher education provider - a university or college.

#### UK domiciled

Declared area of permanent residence within England, Northern Ireland, Scotland and Wales. Applicants from the Channel Islands and Isle of Man are not included.