

P60 Plymouth University

Cycle years: 2011 - 2016

Cycle Reference Point: End of Cycle

Applicant coverage: UK domiciled

Reporting groups: Sex, POLAR3, ethnic group

Applicant statistics: June deadline applicants, placed June deadline applicants, all placed applicants, June deadline applicants per 10,000 population, placed June deadline applicants per 10,000 population, all placed applicants per 10,000 population

Application statistics: June deadline applications, offers, offer rate, average offer rate, percentage point difference between offer rate and average offer rate, contribution of group to the average offer rate

Non-disclosure controls: To avoid the disclosure of information about any individual the following measures are taken

- Applicants, placed applicants, applications and offers are rounded to the nearest 5.
- Applicants/placed applicants per 10,000 population figures are reported as 0 if the applicant/placed applicant figures are rounded to 0.
- All statistics related to the offer rate are not reported when the number of applications for a group is less than 10. The percentage point difference between the offer rate and the average offer rate is not reported when the number of applications for a group is less than 50.
- Offer rates are reported as 0% if there are fewer than 5 offers, and 100% if the number of offers is within 5 of the number of applications. When the offer rate is reported as 0% or 100%, it is reported in italics.

Contents:

18 year old applicants:	P.1
18 year old applications:	P.2
18 year old applicants by sex:	P.3
18 year old applications by sex:	P.4
18 year old applicants by POLAR3 quintile:	P.7
18 year old applications by POLAR3 quintile:	P.8
18 year old applicants by ethnic group:	P.11
18 year old applications by ethnic group:	P.12
Applicants (all ages):	P.15
Applications (all ages):	P.16
Applicants (all ages) by sex:	P.17
Applications (all ages) by sex:	P.18
Applicants (all ages) by POLAR3 quintile:	P.19
Applications (all ages) by POLAR3 quintile:	P.20
Applicants (all ages) by ethnic group:	P.21
Applications (all ages) by ethnic group:	P.22

P.1 18 year old applicants

Statistic	2011	2012	2013	2014	2015	2016
June deadline applicants	10,555	10,265	9,770	9,490	9,455	9,240
Placed June deadline applicants	2,610	2,160	2,040	2,125	1,920	2,110
All placed applicants	2,865	2,480	2,415	2,425	2,240	2,460
June deadline applicants per 10,000 population	137.1	132.7	128.4	126.0	123.4	123.3
Placed June deadline applicants per 10,000	33.9	27.9	26.8	28.2	25.0	28.2
All placed applicants per 10,000 population	37.2	32.0	31.7	32.2	29.3	32.8

P.2 18 year old applications

Statistic	2011	2012	2013	2014	2015	2016
June deadline applications	11,705	11,125	10,510	10,255	10,120	10,030
Offers	9,940	9,705	9,065	8,855	8,630	8,805
Offer rate	84.9%	87.3%	86.3%	86.4%	85.3%	87.8%

P.3 18 year old applicants by sex

Statistic	Sex	2011	2012	2013	2014	2015	2016
June deadline applicants	Men	4,880	4,745	4,555	4,265	4,155	3,870
	Women	5,680	5,520	5,215	5,230	5,300	5,370
Placed June deadline applicants	Men	1,335	1,075	1,010	1,020	915	955
	Women	1,275	1,080	1,030	1,105	1,005	1,155
All placed applicants	Men	1,450	1,250	1,200	1,170	1,070	1,110
	Women	1,415	1,230	1,215	1,255	1,170	1,350
June deadline applicants per 10,000 population	Men	124.0	119.7	116.7	110.1	105.9	100.8
	Women	150.8	146.4	140.8	142.8	141.8	146.9
Placed June deadline applicants per 10,000 population	Men	34.0	27.2	25.8	26.3	23.3	24.9
	Women	33.9	28.7	27.8	30.2	26.9	31.6
All placed applicants per 10,000 population	Men	36.9	31.5	30.8	30.3	27.3	28.9
	Women	37.6	32.7	32.7	34.3	31.4	36.9

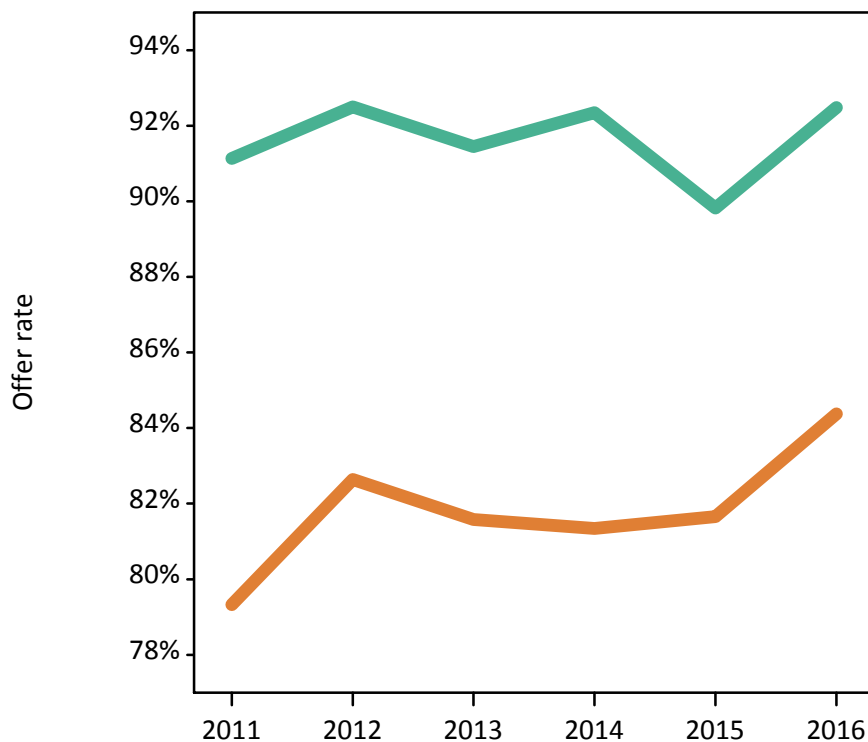
P.4 18 year old applications by sex

Statistic	Sex	2011	2012	2013	2014	2015	2016
June deadline applications	Men	5,530	5,215	4,980	4,690	4,500	4,220
	Women	6,175	5,910	5,525	5,565	5,620	5,810
Offers	Men	5,040	4,825	4,555	4,330	4,040	3,900
	Women	4,900	4,885	4,510	4,525	4,590	4,905
Offer rate	Men	91.1%	92.5%	91.4%	92.3%	89.8%	92.5%
	Women	79.3%	82.6%	81.6%	81.3%	81.7%	84.4%
Average offer rate	Men	91.3%	92.8%	91.5%	92.4%	89.7%	92.6%
	Women	79.2%	82.4%	81.6%	81.3%	81.8%	84.3%
Percentage point difference between offer rate and average offer rate	Men	-0.1	-0.3	-0.0	-0.1	0.1	-0.1
	Women	0.1	0.2	0.0	0.1	-0.1	0.1
Contribution of group to the average offer rate	Men	0.653	0.655	0.659	0.650	0.639	0.609
	Women	0.690	0.696	0.692	0.705	0.711	0.716

P.5 18 year old offer rate by sex

Note: The line for a group is not plotted when that group made fewer than 10 applications in any of the years from 2011-2016.

Men
Women



P.6 Percentage point difference between 18 year old offer rate and average offer rate by sex

Note: The line for a group is not plotted when that group made fewer than 50 applications in any of the years from 2011-2016.

Men
Women



P.7 18 year old applicants by POLAR3 quintile

Statistic	POLAR3 quintile	2011	2012	2013	2014	2015	2016
June deadline applicants	Quintile 1	1,130	1,120	1,125	1,150	1,205	1,155
	Quintile 2	1,695	1,640	1,600	1,535	1,515	1,570
	Quintile 3	2,135	2,135	2,025	1,945	1,940	1,945
	Quintile 4	2,690	2,640	2,415	2,370	2,275	2,185
	Quintile 5	2,880	2,705	2,595	2,475	2,495	2,340
Placed June deadline applicants	Quintile 1	280	250	255	270	260	285
	Quintile 2	425	365	330	380	315	355
	Quintile 3	540	470	460	450	430	460
	Quintile 4	675	550	500	540	490	510
	Quintile 5	690	520	490	485	415	490
All placed applicants	Quintile 1	315	285	295	300	305	315
	Quintile 2	450	415	385	420	360	410
	Quintile 3	590	540	535	510	495	540
	Quintile 4	740	630	595	625	580	595
	Quintile 5	760	605	600	560	495	585
June deadline applicants per 10,000 population	Quintile 1	78.8	78.5	80.6	82.7	86.1	85.7
	Quintile 2	112.9	109.2	108.7	104.8	101.9	108.5
	Quintile 3	138.8	138.3	132.7	129.4	126.5	129.4
	Quintile 4	171.6	166.5	154.4	153.7	145.3	141.5
	Quintile 5	174.1	161.1	156.9	151.6	149.0	141.7
Placed June deadline applicants per 10,000 population	Quintile 1	19.3	17.5	18.3	19.5	18.7	21.1
	Quintile 2	28.1	24.3	22.5	25.9	21.2	24.7
	Quintile 3	35.1	30.6	30.2	29.8	28.0	30.6
	Quintile 4	43.1	34.7	32.0	35.0	31.4	33.2
	Quintile 5	41.6	30.9	29.5	29.7	24.7	29.6
All placed applicants per 10,000 population	Quintile 1	22.1	20.0	21.1	21.7	21.6	23.4
	Quintile 2	30.1	27.5	26.1	28.7	24.3	28.4
	Quintile 3	38.3	35.0	35.1	34.0	32.2	36.1
	Quintile 4	47.3	39.7	38.2	40.6	37.1	38.6
	Quintile 5	45.9	36.1	36.2	34.4	29.6	35.3

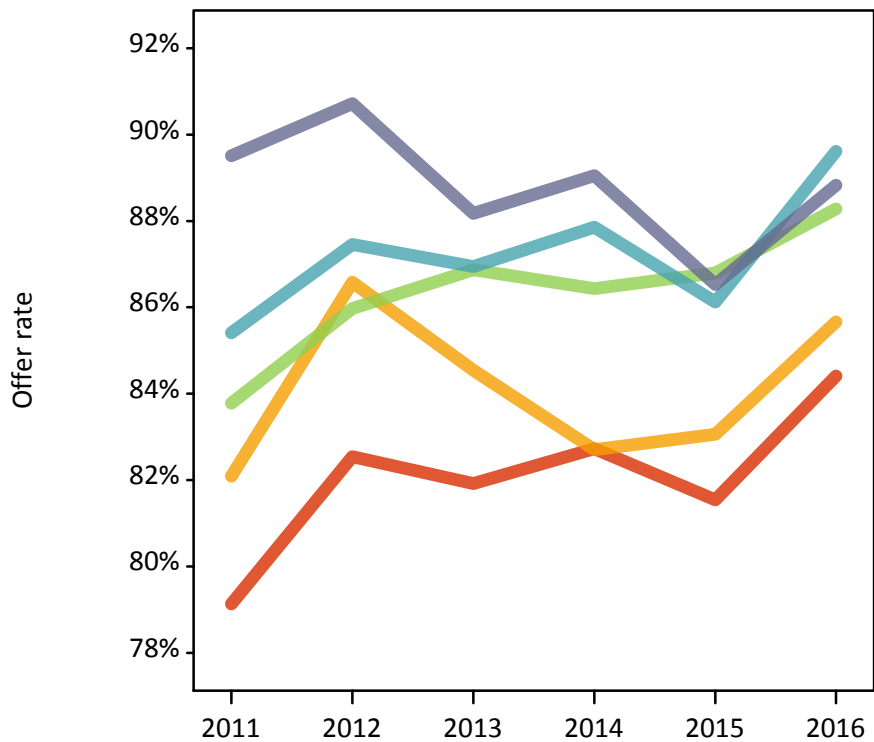
P.8 18 year old applications by POLAR3 quintile

Statistic	POLAR3 quintile	2011	2012	2013	2014	2015	2016
June deadline applications	Quintile 1	1,335	1,260	1,240	1,285	1,325	1,320
	Quintile 2	1,915	1,795	1,725	1,665	1,635	1,715
	Quintile 3	2,410	2,340	2,225	2,115	2,130	2,135
	Quintile 4	2,925	2,870	2,595	2,570	2,405	2,360
	Quintile 5	3,095	2,835	2,705	2,600	2,600	2,455
Offers	Quintile 1	1,060	1,040	1,015	1,065	1,080	1,115
	Quintile 2	1,570	1,555	1,460	1,375	1,360	1,470
	Quintile 3	2,020	2,010	1,930	1,830	1,845	1,885
	Quintile 4	2,500	2,510	2,260	2,255	2,070	2,115
	Quintile 5	2,770	2,570	2,385	2,315	2,250	2,180
Offer rate	Quintile 1	79.1%	82.5%	81.9%	82.7%	81.5%	84.4%
	Quintile 2	82.1%	86.6%	84.5%	82.7%	83.1%	85.7%
	Quintile 3	83.8%	86.0%	86.9%	86.4%	86.8%	88.3%
	Quintile 4	85.4%	87.5%	86.9%	87.9%	86.1%	89.6%
	Quintile 5	89.5%	90.7%	88.2%	89.0%	86.5%	88.8%
Average offer rate	Quintile 1	79.5%	83.5%	82.4%	83.7%	82.3%	86.1%
	Quintile 2	82.6%	85.4%	85.5%	83.2%	84.4%	86.3%
	Quintile 3	84.4%	86.3%	86.8%	86.5%	86.6%	88.3%
	Quintile 4	85.3%	88.0%	87.0%	87.3%	85.6%	88.7%
	Quintile 5	88.7%	90.2%	87.4%	88.7%	86.0%	88.3%
Percentage point difference between offer rate and average offer rate	Quintile 1	-0.4	-0.9	-0.5	-1.0	-0.8	-1.7
	Quintile 2	-0.5	1.1	-0.9	-0.5	-1.3	-0.7
	Quintile 3	-0.6	-0.3	0.1	-0.1	0.2	-0.0
	Quintile 4	0.1	-0.6	-0.0	0.6	0.5	0.9
	Quintile 5	0.8	0.5	0.8	0.3	0.6	0.5
Contribution of group to the average offer rate	Quintile 1	0.206	0.209	0.234	0.232	0.229	0.230
	Quintile 2	0.238	0.240	0.245	0.242	0.235	0.252
	Quintile 3	0.276	0.278	0.285	0.281	0.284	0.283
	Quintile 4	0.314	0.321	0.316	0.323	0.306	0.306
	Quintile 5	0.347	0.338	0.343	0.344	0.346	0.341

P.9 18 year old offer rate by POLAR3 quintile

Note: The line for a group is not plotted when that group made fewer than 10 applications in any of the years from 2011-2016.

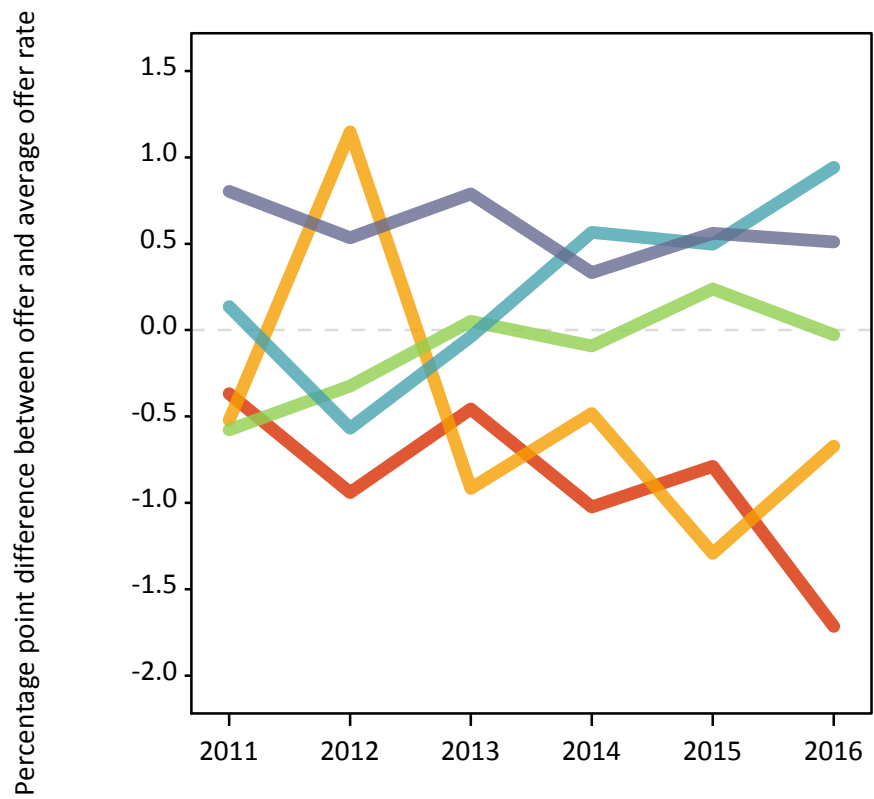
- Quintile 1
- Quintile 2
- Quintile 3
- Quintile 4
- Quintile 5



P.10 Percentage point difference between 18 year old offer rate and average offer rate by POLAR3 quintile

Note: The line for a group is not plotted when that group made fewer than 50 applications in any of the years from 2011-2016.

- Quintile 1
- Quintile 2
- Quintile 3
- Quintile 4
- Quintile 5



P.11 18 year old applicants by ethnic group

Statistic	Ethnic group	2011	2012	2013	2014	2015	2016
June deadline applicants	Asian	270	380	535	510	605	545
	Black	205	325	305	285	270	225
	Mixed	255	260	280	295	290	270
	White	9,740	9,225	8,545	8,310	8,195	8,080
	Other	45	45	80	60	65	75
Placed June deadline applicants	Asian	50	60	50	65	60	65
	Black	40	35	45	30	25	30
	Mixed	55	45	40	50	45	55
	White	2,450	2,005	1,885	1,975	1,775	1,945
	Other	10	5	10	5	10	10
All placed applicants	Asian	70	95	85	90	80	95
	Black	50	55	70	40	40	45
	Mixed	65	60	50	60	55	65
	White	2,660	2,255	2,185	2,225	2,045	2,225
	Other	15	5	15	5	15	15
June deadline applicants per 10,000 population	Asian	43.0	58.5	81.3	75.5	85.3	75.9
	Black	75.0	115.8	102.4	93.7	85.1	72.2
	Mixed	104.5	99.1	103.2	102.9	94.0	86.1
	White	150.5	142.9	135.8	134.7	131.5	133.6
	Other	56.8	48.6	86.0	65.5	68.5	74.5
Placed June deadline applicants per 10,000 population	Asian	8.1	9.4	7.3	9.4	8.2	8.9
	Black	14.6	12.8	15.2	9.2	8.5	10.2
	Mixed	22.3	17.7	15.2	17.4	14.6	16.8
	White	37.8	31.1	30.0	32.0	28.5	32.2
	Other	11.1	4.5	13.2	5.4	10.4	9.1
All placed applicants per 10,000 population	Asian	10.9	14.5	13.2	13.1	11.2	13.5
	Black	17.6	19.5	23.2	12.9	12.6	14.4
	Mixed	27.2	23.4	19.2	21.6	18.2	21.0
	White	41.1	34.9	34.7	36.1	32.9	36.8
	Other	16.0	5.7	16.5	7.5	13.5	13.1

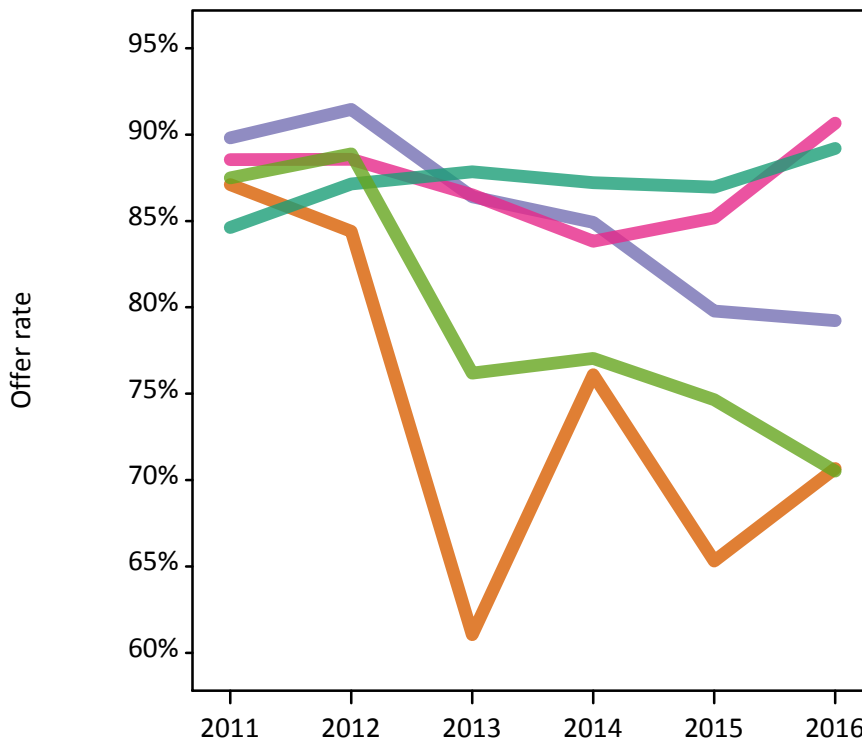
P.12 18 year old applications by ethnic group

Statistic	Ethnic group	2011	2012	2013	2014	2015	2016
June deadline applications	Asian	280	390	550	525	615	560
	Black	205	330	310	285	270	230
	Mixed	260	270	290	310	295	290
	White	10,870	10,055	9,245	9,050	8,830	8,830
	Other	50	45	85	60	70	80
Offers	Asian	245	330	335	400	405	395
	Black	185	300	265	240	215	185
	Mixed	230	240	250	260	255	260
	White	9,200	8,760	8,120	7,890	7,680	7,875
	Other	40	40	65	45	55	55
Offer rate	Asian	87.1%	84.4%	61.1%	76.1%	65.3%	70.7%
	Black	89.8%	91.5%	86.4%	84.9%	79.8%	79.2%
	Mixed	88.5%	88.6%	86.5%	83.8%	85.2%	90.7%
	White	84.6%	87.1%	87.8%	87.2%	87.0%	89.2%
	Other	87.5%	88.9%	76.2%	77.0%	74.6%	70.5%
Average offer rate	Asian	87.0%	84.2%	64.3%	76.3%	67.3%	72.5%
	Black	87.6%	92.2%	87.6%	85.9%	81.6%	81.6%
	Mixed	88.0%	89.0%	88.0%	88.5%	87.4%	91.0%
	White	84.7%	87.1%	87.6%	87.0%	86.7%	89.0%
	Other	83.5%	91.1%	74.4%	77.3%	78.8%	74.0%
Percentage point difference between offer rate and average offer rate	Asian	0.1	0.2	-3.2	-0.2	-2.0	-1.9
	Black	2.3	-0.7	-1.2	-0.9	-1.8	-2.4
	Mixed	0.6	-0.5	-1.5	-4.6	-2.2	-0.3
	White	-0.1	0.0	0.2	0.2	0.3	0.2
	Other	N/A	N/A	1.7	-0.2	-4.2	-3.4
Contribution of group to the average offer rate	Asian	0.116	0.203	0.308	0.255	0.315	0.302
	Black	0.114	0.142	0.145	0.144	0.130	0.114
	Mixed	0.097	0.097	0.106	0.141	0.123	0.135
	White	0.937	0.919	0.907	0.906	0.901	0.906
	Other	0.083	0.092	0.086	0.127	0.139	0.109

P.13 18 year old offer rate by ethnic group

Note: The line for a group is not plotted when that group made fewer than 10 applications in any of the years from 2011-2016.

- Asian
- Black
- Mixed
- White
- Other



P.14 Percentage point difference between 18 year old offer rate and average offer rate by ethnic group

Note: The line for a group is not plotted when that group made fewer than 50 applications in any of the years from 2011-2016.

- Asian
- Black
- Mixed
- White
- Other



P.15 Applicants (all ages)

Statistic	2011	2012	2013	2014	2015	2016
June deadline applicants	20,060	18,810	19,490	19,315	18,505	17,820
Placed June deadline applicants	5,060	4,250	4,375	4,615	4,140	4,295
All placed applicants	5,585	4,900	5,115	5,310	4,815	4,980

P.16 Applications (all ages)

Statistic	2011	2012	2013	2014	2015	2016
June deadline applications	22,920	20,905	21,445	21,445	20,330	19,790
Offers	16,845	15,815	15,905	15,910	15,015	15,145
Offer rate	73.5%	75.7%	74.2%	74.2%	73.8%	76.5%

P.17 Applicants (all ages) by sex

Statistic	Sex	2011	2012	2013	2014	2015	2016
June deadline applicants	Men	9,085	8,545	8,905	8,495	8,060	7,395
	Women	10,975	10,270	10,585	10,820	10,445	10,425
Placed June deadline applicants	Men	2,500	2,070	2,040	2,110	1,850	1,835
	Women	2,560	2,180	2,335	2,505	2,290	2,465
All placed applicants	Men	2,735	2,420	2,435	2,480	2,165	2,160
	Women	2,850	2,485	2,680	2,830	2,650	2,825

P.18 Applications (all ages) by sex

Statistic	Sex	2011	2012	2013	2014	2015	2016
June deadline applications	Men	10,500	9,590	9,860	9,495	8,850	8,190
	Women	12,420	11,315	11,580	11,945	11,485	11,595
Offers	Men	8,630	8,035	7,965	7,830	7,100	6,785
	Women	8,220	7,780	7,940	8,080	7,915	8,360
Offer rate	Men	82.2%	83.8%	80.8%	82.5%	80.2%	82.8%
	Women	66.2%	68.8%	68.6%	67.6%	68.9%	72.1%

P.19 Applicants (all ages) by POLAR3 quintile

Statistic	POLAR3 quintile	2011	2012	2013	2014	2015	2016
June deadline applicants	Quintile 1	2,605	2,480	2,630	2,670	2,615	2,585
	Quintile 2	3,545	3,295	3,460	3,455	3,310	3,285
	Quintile 3	4,190	4,035	3,985	4,115	3,860	3,720
	Quintile 4	4,905	4,610	4,655	4,565	4,330	4,130
	Quintile 5	4,755	4,345	4,720	4,470	4,345	3,980
Placed June deadline applicants	Quintile 1	695	615	645	730	665	680
	Quintile 2	900	780	810	890	790	850
	Quintile 3	1,065	950	970	1,045	890	875
	Quintile 4	1,245	1,055	1,065	1,035	1,015	1,035
	Quintile 5	1,140	845	880	905	765	830
All placed applicants	Quintile 1	785	700	735	820	765	765
	Quintile 2	985	885	935	1,005	910	975
	Quintile 3	1,175	1,095	1,115	1,185	1,030	1,035
	Quintile 4	1,360	1,220	1,255	1,215	1,180	1,195
	Quintile 5	1,260	990	1,065	1,070	910	985

P.20 Applications (all ages) by POLAR3 quintile

Statistic	POLAR3 quintile	2011	2012	2013	2014	2015	2016
June deadline applications	Quintile 1	3,205	2,875	2,965	3,110	3,000	2,995
	Quintile 2	4,140	3,760	3,860	3,915	3,690	3,745
	Quintile 3	4,835	4,490	4,480	4,575	4,310	4,135
	Quintile 4	5,520	5,125	5,115	5,040	4,715	4,580
	Quintile 5	5,155	4,600	4,965	4,750	4,560	4,200
Offers	Quintile 1	2,095	1,965	2,065	2,190	2,105	2,185
	Quintile 2	2,890	2,700	2,770	2,735	2,615	2,775
	Quintile 3	3,480	3,375	3,335	3,395	3,190	3,180
	Quintile 4	4,140	3,960	3,860	3,790	3,545	3,575
	Quintile 5	4,195	3,780	3,850	3,765	3,530	3,345
Offer rate	Quintile 1	65.4%	68.3%	69.6%	70.5%	70.2%	73.0%
	Quintile 2	69.8%	71.8%	71.7%	69.8%	70.9%	74.1%
	Quintile 3	72.0%	75.2%	74.4%	74.2%	74.0%	77.0%
	Quintile 4	75.0%	77.3%	75.4%	75.2%	75.1%	78.0%
	Quintile 5	81.4%	82.1%	77.5%	79.2%	77.4%	79.6%

P.21 Applicants (all ages) by ethnic group

Statistic	Ethnic group	2011	2012	2013	2014	2015	2016
June deadline applicants	Asian	575	825	1,370	1,345	1,380	1,335
	Black	585	775	790	780	725	665
	Mixed	490	470	570	605	550	545
	White	18,230	16,525	16,465	16,315	15,520	14,965
	Other	95	125	195	180	205	185
Placed June deadline applicants	Asian	105	130	115	150	155	170
	Black	85	95	90	75	85	80
	Mixed	105	90	95	120	95	90
	White	4,725	3,890	4,025	4,235	3,760	3,905
	Other	20	20	30	20	20	20
All placed applicants	Asian	140	190	185	210	205	230
	Black	110	135	145	115	135	115
	Mixed	120	115	115	145	125	115
	White	5,160	4,405	4,610	4,800	4,300	4,455
	Other	30	25	35	25	30	30

P.22 Applications (all ages) by ethnic group

Statistic	Ethnic group	2011	2012	2013	2014	2015	2016
June deadline applications	Asian	610	860	1,410	1,375	1,420	1,370
	Black	610	815	815	815	755	695
	Mixed	535	515	600	645	575	580
	White	20,960	18,465	18,310	18,325	17,240	16,820
	Other	105	145	205	185	210	190
Offers	Asian	460	655	675	775	805	800
	Black	390	570	510	525	435	400
	Mixed	395	410	455	485	430	450
	White	15,445	14,005	14,090	13,960	13,165	13,310
	Other	75	100	120	110	115	105
Offer rate	Asian	75.6%	76.2%	47.8%	56.4%	56.6%	58.4%
	Black	64.3%	69.7%	62.3%	64.7%	57.9%	57.3%
	Mixed	73.8%	79.4%	75.4%	75.7%	74.9%	77.9%
	White	73.7%	75.8%	76.9%	76.2%	76.4%	79.1%
	Other	72.4%	69.4%	58.3%	60.0%	53.3%	53.9%

Technical Notes and Definitions

UCAS undergraduate scheme

Adjustment

Adjustment allows applicants who have met and exceeded the terms of their conditional firm offer to seek and find a place at another provider whilst keeping their place at their original firm choice provider.

Clearing

Clearing is a route for applicants that are not placed and holding no offers to find a place on courses with vacancies.

Cycle year

The UCAS application cycle which runs from September to October the following year. For example the 2016 cycle runs from September 2015 through to October 2016.

End of cycle

The point in the cycle to which the numbers in this report refer, and the point at which the cycle is closed such that no more applications or offers can be made, and no more applicants can be placed. Numbers reported at the end of cycle exclude information on a small number of applicants who cancelled during the cycle.

Extra

Applicants who are unsuccessful in obtaining an offer or decline all offers may be eligible to apply through Extra, where they can apply to one further course at a time. Extra operates from 25 February until early July. It provides applicants who are eligible the possibility of obtaining an offer before exam results are published and Clearing starts.

June 30 deadline

The deadline for main scheme applications. Applicants who apply after this date will go directly into Clearing.

Record of Prior Acceptance (RPA)

RPA is an acceptance route used when a provider informs UCAS of applicants it has accepted outside of the normal application process (e.g. individuals who have applied directly to the provider).

Reporting groups

Ethnic group

High level grouping of ethnic origin as declared by the applicant: 'White', 'Black', 'Asian', 'Mixed', 'Other', 'Unknown'. Applicants who declare themselves as 'Unknown' ethnic origin are not reported in these tables, but are included in the associated csv data file.

POLAR3 quintile

Developed by HEFCE, POLAR3 classifies small areas across the UK into five groups according to their level of young participation in Higher Education. Each of these groups represents around 20 per cent of young people and is ranked from Quintile 1 (areas with the lowest young participation rates, considered as the most disadvantaged) to Quintile 5 (highest young participation rates, considered most advantaged). POLAR3 is based on the participation rates of young people between 2005 and 2009 who entered Higher Education between 2005-06 and 2010-11, therefore is most suitable for applicants aged 19 and under. These groups are assigned using the postcode declared by the applicant at the time of their application. If a UK postcode is invalid, considered unsafe for measurement or there is no link to Census geography possible then the applicant is not assigned to a quintile. Applicants with no POLAR3 quintile are not reported.

Sex

Sex as declared by the applicant.

SIMD quintile

Scottish index of multiple deprivation (SIMD) for 2012 identifies small area concentrations of multiple deprivation across all of Scotland, providing a relative measure of deprivation amongst 6505 small areas (data zones) based on 7 socio-economic domains. These small areas are classified into five groups ranked from Quintile 1 (considered the most deprived) to Quintile 5 (considered least deprived), with equal populations in each quintile. Quintiles are assigned using the postcode declared by the applicant, applicants declaring invalid postcodes are classified as 'Not assigned' and are not reported.

SIMD is only defined for applicants domiciled in Scotland, therefore any applicants domiciled outside of Scotland cannot be assigned to an SIMD quintile and so are not reported for this measure.

SIMD is only reported for providers in Scotland. Application and entry rates by SIMD are reported in the 2016 End of Cycle Report and the 2016 cycle January deadline application rate report.

Statistics reported in the tables

All placed applicants

The number of applicants placed for entry into higher education at the provider through one of their choices, including any choices made through Extra, or via Adjustment, Clearing or RPA.

All placed applicants per 10,000 population

The number of total UK domiciled 18 year old placed applicants for entry into higher education at the provider divided by the number of UK 18 year olds in the population, multiplied by 10,000. This gives the number of 18 year olds, for every 10,000 in the population, that were placed at the provider through one of their choices, including any choices made through Extra, or via Adjustment, Clearing or RPA. It is an alternative way of expressing the entry rate to a provider. By referencing the underlying population this statistic shows how the number of placed applicants is changing in relation to the available pool of potential applicants and so gives the chance that somebody from the group will be placed at a provider.

This statistic is only reported for 18 year olds.

Average offer rate

The offer rate that you might expect if the predicted grades and subject choice of applicants were the only factors that influenced whether an applicant was made an offer by the provider. The average offer rate is calculated by dividing applicants according to their specific combination of grades (for A levels the best three predicted grades are used, for BTECs, International Baccalaureate and Scottish Highers and Advanced Highers, predicted grades along with any grades already achieved upon applying are used) and subject choice. For each combination the number of main scheme offers is divided by the number of main scheme applications, to give an overall offer rate. This is then multiplied by the number of applications made by the group for which the average offer rate is being calculated (for example POLAR3 quintile 1), to give an average number of offers for that group. These average number of offers are then added together across all combinations of predicted grade and subject and divided by the number of main scheme applications from the group to give the average offer rate.

The average offer rate does not attempt to control for any other factors that may play a part in the decision to make an offer, such as the subject of the qualifications studied, their relevance to a course, or the grade in each subject; higher numbers of A levels being studied; the exact profile of grades predicted; personal statements; teacher references; interviews; or any other criteria (such as work experience or portfolios) that may be part of the admissions decision.

This statistic is only reported for 18 year olds.

Contribution of group to the average offer rate

The way in which the average offer rate is defined means that the pattern of application and offers of a group (for example POLAR3 quintile 1) will always contribute, in part, to the average offer rate for that group. When this contribution is large, the average offer rate will mainly reflect the patterns for the group, meaning that the value of the average offer rate will be similar to the offer rate, the percentage point difference statistic will be small, and any real difference between the offer rate and what might be expected given the predicted grades and subject choices of the applicants will be difficult to detect.

Values of the contribution of group to the average offer rate range between 0 and 1. The closer the value is to 1 the greater the contribution a group makes to its own average offer rate.

This statistic is only reported for 18 year olds.

Placed June deadline applicants

An applicant who has been placed for entry into higher education at the provider through a June deadline application.

Placed June deadline applicants per 10,000 population

The number of UK domiciled 18 year old placed June deadline applicants at the provider divided by the number of UK 18 year olds in the population, multiplied by 10,000. This gives the number of 18 year olds, for every 10,000 in the population, that were placed at the provider through one of their June deadline applications. It is an alternative way of expressing the entry rate to a provider, but for placed June deadline applicants only. By referencing the underlying population this statistic shows how the number of placed June deadline applicants is changing in relation to the available pool of potential 18 year old applicants and so gives the chance that somebody from the group will be placed at a provider through a June deadline application.

This statistic is only reported for 18 year olds.

June deadline applications

An application (or choice) to a course in higher education to the provider that is made by the June 30 deadline. Each applicant can make up to five choices this way. The number of June deadline applications does not include choices made through the following routes: Clearing, Extra, Adjustment and RPAs. Applications made to October deadline courses received after the October deadline are not included in these statistics.

June deadline applicants

The number of applicants that made at least one application to the provider by the June 30 deadline.

June deadline applicants per 10,000 population

The number of UK domiciled 18 year old June deadline applicants to the provider divided by the number of UK 18 year olds in the population, multiplied by 10,000. This gives the number of 18 year olds, for every 10,000 in the population, who applied by the June 30 deadline. It is equivalent to the application rate. By referencing the underlying population this statistic shows how the number of June deadline applicants is changing in relation to the available pool of potential 18 year old applicants and so gives the chance that somebody from the group will apply to a provider by the June 30 deadline.

This statistic is only reported for 18 year olds.

Offers

An offer is defined as a provider's decision in response to an application to offer a place to an applicant, often subject to the applicant satisfying academic and/or other criteria, via a June deadline application (i.e. does not cover choices made through the following routes: Clearing, Extra, Adjustment and RPAs).

Offer rate

The number of offers made divided by the number of June deadline applications. This gives the proportion of all June deadline applications to the provider that received an offer.

Percentage point difference between offer rate and average offer rate

The offer rate minus the average offer rate.

The percentage point difference can be compared to the expected range of statistical variation resulting from the calculation of the average offer rate using the Average Offer Rate Lookup Table. Where the value of the percentage point difference lies outside of this range, the percentage point difference may be considered to represent a real difference between the offer rate and the average offer rate.

Other definitions

Age

This analysis uses country-specific age definitions that align with the cut off points for school and college cohorts within the different administrations of the UK. For England and Wales, ages are defined on the 31 August, for Northern Ireland on the 1 July and for Scotland on the 28 February the following year. Defining ages in this way matches the assignment of children to school cohorts. For applicants outside of the UK a cohort cut off of 31 August has been used.

Provider

A higher education provider - a university or college.

UK domiciled

Declared area of permanent residence within England, Northern Ireland, Scotland and Wales. Applicants from the Channel Islands and Isle of Man are not included.