

N38 University of Northampton

Cycle years: 2011 - 2016

Cycle Reference Point: End of Cycle

Applicant coverage: UK domiciled

Reporting groups: Sex, POLAR3, ethnic group

Applicant statistics: June deadline applicants, placed June deadline applicants, all placed applicants, June deadline applicants per 10,000 population, placed June deadline applicants per 10,000 population, all placed applicants per 10,000 population

Application statistics: June deadline applications, offers, offer rate, average offer rate, percentage point difference between offer rate and average offer rate, contribution of group to the average offer rate

Non-disclosure controls: To avoid the disclosure of information about any individual the following measures are taken

- Applicants, placed applicants, applications and offers are rounded to the nearest 5.
- Applicants/placed applicants per 10,000 population figures are reported as 0 if the applicant/placed applicant figures are rounded to 0.
- All statistics related to the offer rate are not reported when the number of applications for a group is less than 10. The percentage point difference between the offer rate and the average offer rate is not reported when the number of applications for a group is less than 50.
- Offer rates are reported as 0% if there are fewer than 5 offers, and 100% if the number of offers is within 5 of the number of applications. When the offer rate is reported as 0% or 100%, it is reported in italics.

Contents:

18 year old applicants:	P.1
18 year old applications:	P.2
18 year old applicants by sex:	P.3
18 year old applications by sex:	P.4
18 year old applicants by POLAR3 quintile:	P.7
18 year old applications by POLAR3 quintile:	P.8
18 year old applicants by ethnic group:	P.11
18 year old applications by ethnic group:	P.12
Applicants (all ages):	P.15
Applications (all ages):	P.16
Applicants (all ages) by sex:	P.17
Applications (all ages) by sex:	P.18
Applicants (all ages) by POLAR3 quintile:	P.19
Applications (all ages) by POLAR3 quintile:	P.20
Applicants (all ages) by ethnic group:	P.21
Applications (all ages) by ethnic group:	P.22

P.1 18 year old applicants

Statistic	2011	2012	2013	2014	2015	2016
June deadline applicants	7,840	6,995	6,925	7,100	5,925	6,775
Placed June deadline applicants	1,040	1,050	1,055	1,105	985	1,115
All placed applicants	1,195	1,290	1,270	1,350	1,310	1,340
June deadline applicants per 10,000 population	101.8	90.4	91.0	94.2	77.3	90.4
Placed June deadline applicants per 10,000	13.5	13.6	13.8	14.6	12.9	14.9
All placed applicants per 10,000 population	15.5	16.7	16.7	17.9	17.1	17.9

P.2 18 year old applications

Statistic	2011	2012	2013	2014	2015	2016
June deadline applications	8,295	7,315	7,270	7,395	6,190	7,035
Offers	6,170	5,535	5,620	5,815	4,590	5,385
Offer rate	74.4%	75.7%	77.3%	78.7%	74.2%	76.6%

P.3 18 year old applicants by sex

Statistic	Sex	2011	2012	2013	2014	2015	2016
June deadline applicants	Men	2,820	2,525	2,330	2,390	1,895	2,400
	Women	5,015	4,470	4,595	4,710	4,030	4,375
Placed June deadline applicants	Men	355	370	360	385	340	395
	Women	685	680	695	720	645	720
All placed applicants	Men	415	465	455	475	470	480
	Women	780	820	810	875	840	860
June deadline applicants per 10,000 population	Men	71.7	63.6	59.7	61.7	48.3	62.5
	Women	133.2	118.6	124.0	128.6	107.8	119.7
Placed June deadline applicants per 10,000 population	Men	9.0	9.3	9.2	9.9	8.7	10.3
	Women	18.1	18.0	18.7	19.6	17.3	19.6
All placed applicants per 10,000 population	Men	10.5	11.8	11.7	12.2	11.9	12.4
	Women	20.7	21.8	21.9	23.9	22.5	23.6

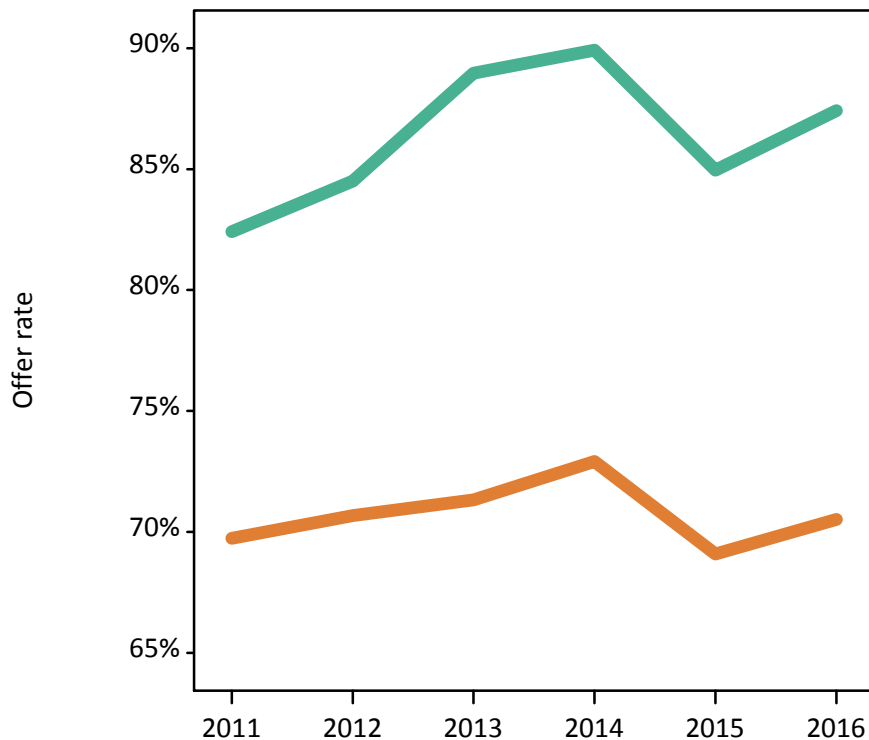
P.4 18 year old applications by sex

Statistic	Sex	2011	2012	2013	2014	2015	2016
June deadline applications	Men	3,035	2,650	2,475	2,500	1,985	2,520
	Women	5,260	4,660	4,795	4,890	4,200	4,515
Offers	Men	2,505	2,240	2,200	2,250	1,690	2,200
	Women	3,665	3,295	3,420	3,565	2,905	3,185
Offer rate	Men	82.4%	84.5%	89.0%	89.9%	85.0%	87.4%
	Women	69.7%	70.7%	71.3%	72.9%	69.1%	70.5%
Average offer rate	Men	82.7%	84.6%	88.9%	90.0%	84.6%	86.4%
	Women	69.6%	70.6%	71.4%	72.9%	69.3%	71.1%
Percentage point difference between offer rate and average offer rate	Men	-0.3	-0.1	0.1	-0.0	0.4	1.1
	Women	0.2	0.1	-0.0	0.0	-0.2	-0.6
Contribution of group to the average offer rate	Men	0.578	0.589	0.573	0.574	0.573	0.583
	Women	0.756	0.766	0.779	0.782	0.798	0.768

P.5 18 year old offer rate by sex

Note: The line for a group is not plotted when that group made fewer than 10 applications in any of the years from 2011-2016.

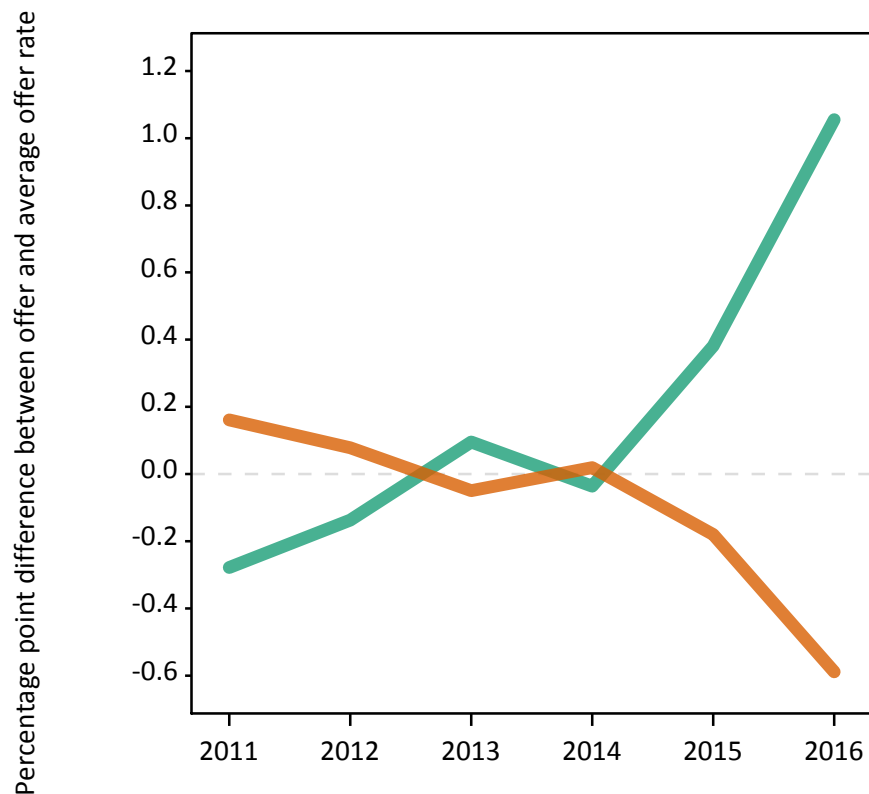
Men
Women



P.6 Percentage point difference between 18 year old offer rate and average offer rate by sex

Note: The line for a group is not plotted when that group made fewer than 50 applications in any of the years from 2011-2016.

Men
Women



P.7 18 year old applicants by POLAR3 quintile

Statistic	POLAR3 quintile	2011	2012	2013	2014	2015	2016
June deadline applicants	Quintile 1	975	845	895	965	770	865
	Quintile 2	1,435	1,255	1,355	1,295	1,110	1,260
	Quintile 3	1,750	1,585	1,585	1,585	1,410	1,625
	Quintile 4	1,895	1,725	1,575	1,735	1,375	1,585
	Quintile 5	1,780	1,565	1,500	1,510	1,245	1,405
Placed June deadline applicants	Quintile 1	125	145	160	165	135	140
	Quintile 2	190	205	200	190	190	210
	Quintile 3	240	260	240	255	245	295
	Quintile 4	265	240	250	285	245	270
	Quintile 5	220	200	195	205	175	195
All placed applicants	Quintile 1	135	175	185	190	170	165
	Quintile 2	215	255	235	235	250	250
	Quintile 3	280	305	295	315	330	355
	Quintile 4	310	295	310	350	320	325
	Quintile 5	255	260	245	250	240	230
June deadline applicants per 10,000 population	Quintile 1	67.7	59.5	64.4	69.2	54.8	64.0
	Quintile 2	95.4	83.8	91.9	88.4	74.7	87.1
	Quintile 3	113.7	102.8	103.9	105.5	92.0	108.0
	Quintile 4	120.9	108.8	100.8	112.6	87.9	102.6
	Quintile 5	107.7	93.2	90.7	92.6	74.4	85.0
Placed June deadline applicants per 10,000 population	Quintile 1	8.6	10.1	11.5	11.9	9.6	10.3
	Quintile 2	12.7	13.7	13.7	12.9	12.7	14.7
	Quintile 3	15.7	16.8	15.8	16.9	15.8	19.5
	Quintile 4	16.9	15.0	16.1	18.6	15.6	17.4
	Quintile 5	13.2	11.9	11.9	12.5	10.5	11.7
All placed applicants per 10,000 population	Quintile 1	9.5	12.1	13.1	13.8	12.1	12.4
	Quintile 2	14.4	16.9	15.8	16.1	16.8	17.3
	Quintile 3	18.2	19.9	19.2	21.0	21.5	23.6
	Quintile 4	19.7	18.5	19.9	22.6	20.3	21.1
	Quintile 5	15.3	15.5	14.9	15.5	14.2	14.0

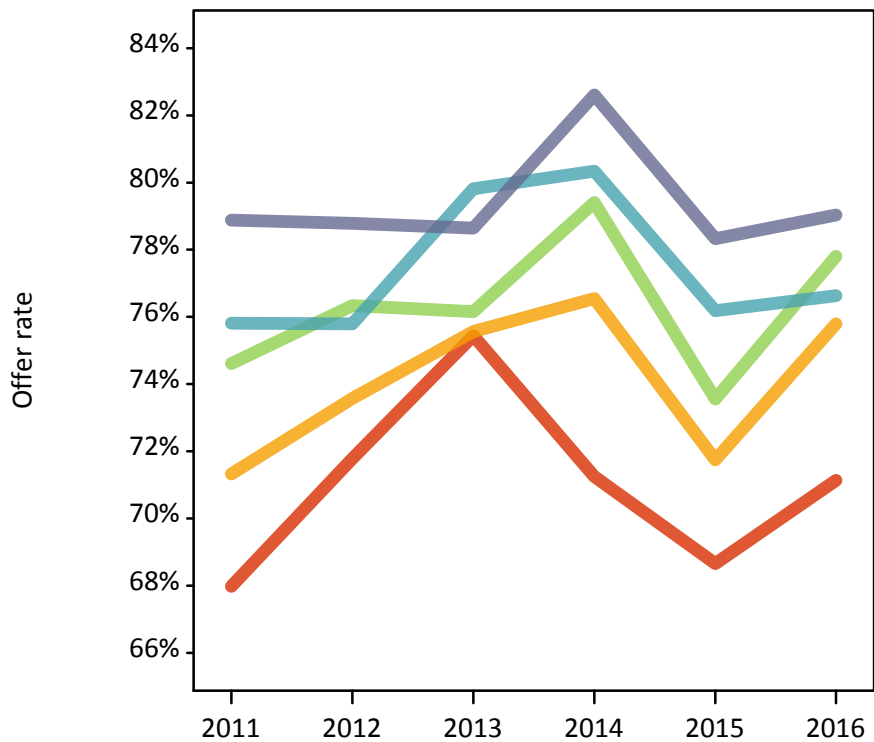
P.8 18 year old applications by POLAR3 quintile

Statistic	POLAR3 quintile	2011	2012	2013	2014	2015	2016
June deadline applications	Quintile 1	1,040	885	965	1,005	820	910
	Quintile 2	1,530	1,315	1,415	1,355	1,170	1,295
	Quintile 3	1,890	1,665	1,660	1,650	1,455	1,685
	Quintile 4	1,995	1,825	1,655	1,815	1,455	1,650
	Quintile 5	1,830	1,610	1,560	1,560	1,280	1,450
Offers	Quintile 1	705	635	730	715	565	650
	Quintile 2	1,090	965	1,070	1,040	840	985
	Quintile 3	1,410	1,270	1,265	1,310	1,070	1,310
	Quintile 4	1,515	1,385	1,320	1,460	1,105	1,265
	Quintile 5	1,440	1,270	1,225	1,285	1,000	1,145
Offer rate	Quintile 1	68.0%	71.8%	75.4%	71.2%	68.7%	71.1%
	Quintile 2	71.3%	73.6%	75.6%	76.5%	71.7%	75.8%
	Quintile 3	74.6%	76.3%	76.2%	79.4%	73.6%	77.8%
	Quintile 4	75.8%	75.8%	79.8%	80.3%	76.2%	76.6%
	Quintile 5	78.9%	78.8%	78.6%	82.6%	78.3%	79.0%
Average offer rate	Quintile 1	70.4%	72.1%	76.0%	73.0%	70.9%	74.0%
	Quintile 2	73.1%	75.3%	76.0%	77.4%	73.2%	76.1%
	Quintile 3	74.2%	75.2%	76.2%	79.8%	73.4%	76.8%
	Quintile 4	74.2%	76.0%	78.1%	79.3%	75.0%	76.8%
	Quintile 5	78.1%	78.2%	79.6%	81.6%	77.1%	77.9%
Percentage point difference between offer rate and average offer rate	Quintile 1	-2.4	-0.3	-0.5	-1.7	-2.3	-2.9
	Quintile 2	-1.8	-1.7	-0.5	-0.8	-1.4	-0.3
	Quintile 3	0.4	1.1	-0.0	-0.4	0.2	1.0
	Quintile 4	1.6	-0.2	1.7	1.0	1.2	-0.2
	Quintile 5	0.8	0.6	-1.0	1.0	1.2	1.1
Contribution of group to the average offer rate	Quintile 1	0.210	0.212	0.212	0.211	0.218	0.209
	Quintile 2	0.254	0.256	0.285	0.254	0.266	0.253
	Quintile 3	0.299	0.306	0.302	0.291	0.307	0.311
	Quintile 4	0.309	0.324	0.308	0.306	0.314	0.303
	Quintile 5	0.310	0.306	0.301	0.296	0.297	0.293

P.9 18 year old offer rate by POLAR3 quintile

Note: The line for a group is not plotted when that group made fewer than 10 applications in any of the years from 2011-2016.

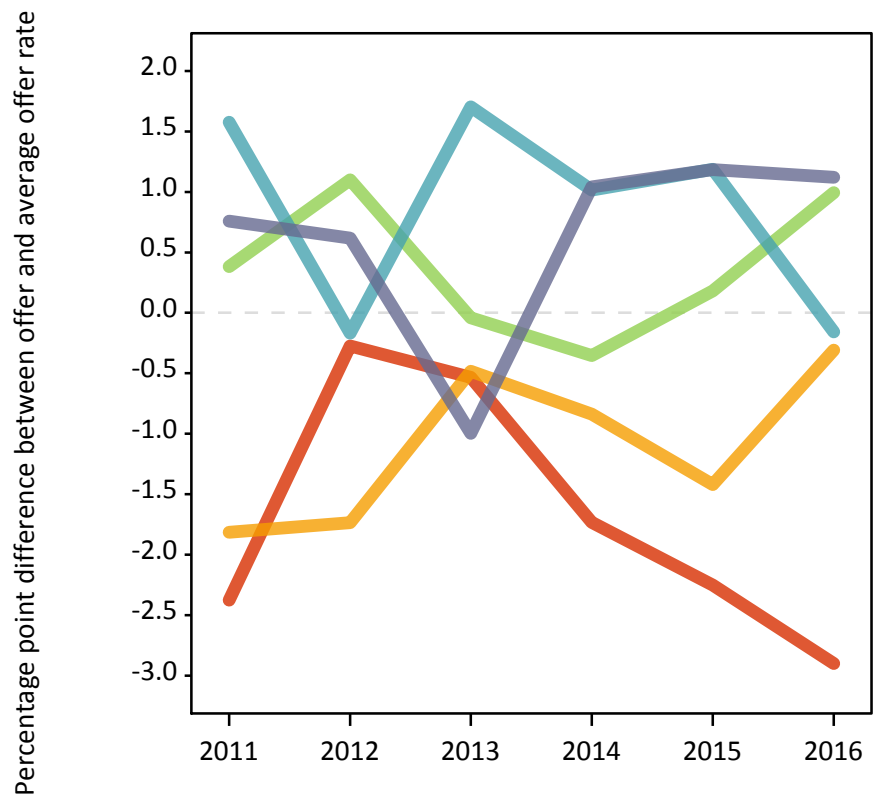
- Quintile 1
- Quintile 2
- Quintile 3
- Quintile 4
- Quintile 5



P.10 Percentage point difference between 18 year old offer rate and average offer rate by POLAR3 quintile

Note: The line for a group is not plotted when that group made fewer than 50 applications in any of the years from 2011-2016.

- Quintile 1
- Quintile 2
- Quintile 3
- Quintile 4
- Quintile 5



P.11 18 year old applicants by ethnic group

Statistic	Ethnic group	2011	2012	2013	2014	2015	2016
June deadline applicants	Asian	600	625	610	650	515	635
	Black	670	675	640	825	870	1,145
	Mixed	265	250	240	290	240	340
	White	6,205	5,355	5,360	5,245	4,230	4,560
	Other	70	65	60	70	45	65
Placed June deadline applicants	Asian	60	85	80	90	90	90
	Black	90	110	115	135	170	270
	Mixed	30	45	35	45	35	50
	White	845	805	815	815	680	685
	Other	10	5	10	10	5	10
All placed applicants	Asian	80	120	115	130	125	115
	Black	115	150	175	220	290	355
	Mixed	35	50	45	55	50	60
	White	950	955	925	930	825	790
	Other	10	5	10	15	15	15
June deadline applicants per 10,000 population	Asian	95.4	96.7	92.8	95.7	72.6	88.2
	Black	245.8	240.4	215.6	271.5	272.7	366.6
	Mixed	108.6	96.0	88.8	101.5	78.2	108.1
	White	95.8	83.0	85.2	85.0	67.9	75.4
	Other	86.4	71.2	65.1	76.3	47.7	66.5
Placed June deadline applicants per 10,000 population	Asian	9.5	13.3	12.0	13.3	13.0	12.5
	Black	32.9	39.1	38.1	45.2	53.4	86.9
	Mixed	12.4	16.5	12.6	16.0	11.7	16.2
	White	13.1	12.4	13.0	13.2	10.9	11.3
	Other	9.9	3.4	12.1	11.8	5.2	12.1
All placed applicants per 10,000 population	Asian	12.7	18.7	17.3	18.9	17.8	15.7
	Black	41.3	53.3	58.3	72.9	91.1	113.4
	Mixed	14.9	19.6	15.9	18.8	15.9	19.7
	White	14.7	14.8	14.7	15.0	13.2	13.0
	Other	11.1	6.8	13.2	14.0	13.5	14.1

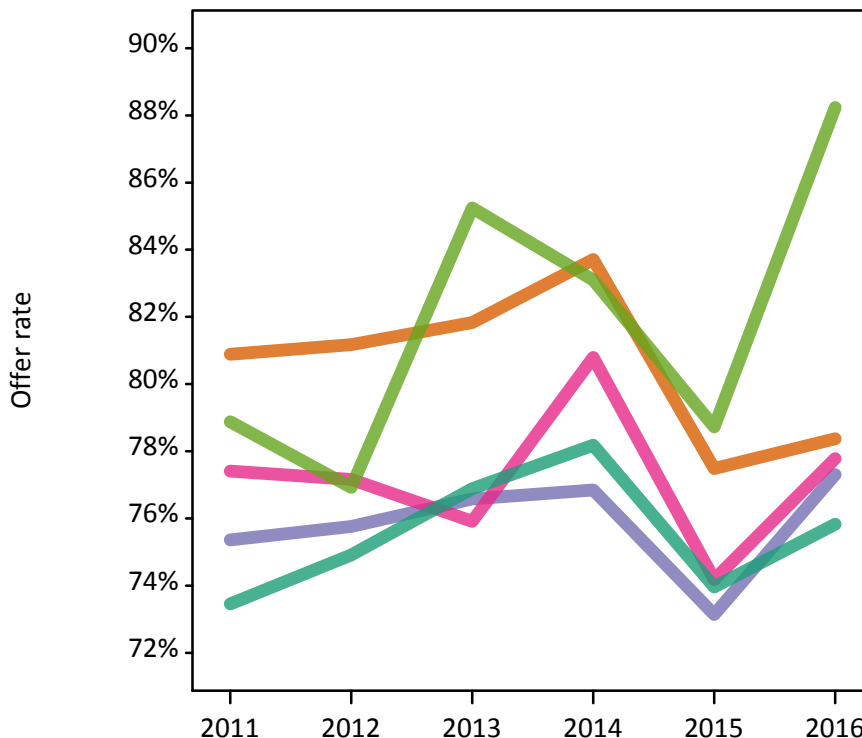
P.12 18 year old applications by ethnic group

Statistic	Ethnic group	2011	2012	2013	2014	2015	2016
June deadline applications	Asian	635	650	645	665	565	650
	Black	685	690	650	840	875	1,160
	Mixed	270	255	245	300	245	350
	White	6,605	5,635	5,655	5,500	4,425	4,780
	Other	70	65	60	70	45	70
Offers	Asian	510	525	525	555	435	510
	Black	515	520	495	645	640	895
	Mixed	210	195	185	245	180	275
	White	4,850	4,220	4,350	4,300	3,275	3,625
	Other	55	50	50	60	35	60
Offer rate	Asian	80.9%	81.2%	81.8%	83.7%	77.5%	78.4%
	Black	75.4%	75.8%	76.6%	76.8%	73.1%	77.3%
	Mixed	77.4%	77.2%	75.9%	80.8%	74.2%	77.8%
	White	73.5%	74.9%	76.9%	78.2%	74.0%	75.8%
	Other	78.9%	76.9%	85.2%	83.1%	78.7%	88.2%
Average offer rate	Asian	80.7%	82.7%	81.3%	83.9%	78.0%	79.6%
	Black	77.2%	79.2%	77.5%	78.7%	73.4%	78.0%
	Mixed	77.9%	79.2%	76.9%	83.4%	75.2%	78.1%
	White	73.2%	74.2%	76.8%	77.6%	73.7%	75.5%
	Other	81.1%	81.4%	83.5%	86.6%	80.8%	85.0%
Percentage point difference between offer rate and average offer rate	Asian	0.2	-1.5	0.5	-0.2	-0.5	-1.3
	Black	-1.8	-3.4	-0.9	-1.9	-0.3	-0.7
	Mixed	-0.4	-2.1	-0.9	-2.6	-1.1	-0.3
	White	0.2	0.7	0.1	0.6	0.2	0.3
	Other	-2.2	-4.5	1.8	-3.5	N/A	3.2
Contribution of group to the average offer rate	Asian	0.208	0.251	0.210	0.194	0.225	0.192
	Black	0.201	0.213	0.212	0.228	0.276	0.294
	Mixed	0.123	0.133	0.111	0.123	0.128	0.125
	White	0.833	0.816	0.815	0.783	0.767	0.734
	Other	0.140	0.128	0.106	0.108	0.110	0.084

P.13 18 year old offer rate by ethnic group

Note: The line for a group is not plotted when that group made fewer than 10 applications in any of the years from 2011-2016.

- Asian
- Black
- Mixed
- White
- Other



P.14 Percentage point difference between 18 year old offer rate and average offer rate by ethnic group

Note: The line for a group is not plotted when that group made fewer than 50 applications in any of the years from 2011-2016.

- Asian
- Black
- Mixed
- White
- Other



P.15 Applicants (all ages)

Statistic	2011	2012	2013	2014	2015	2016
June deadline applicants	16,735	14,720	15,115	14,900	13,015	14,320
Placed June deadline applicants	2,615	2,370	2,545	2,585	2,385	2,650
All placed applicants	2,990	2,945	3,080	3,230	3,175	3,230

P.16 Applications (all ages)

Statistic	2011	2012	2013	2014	2015	2016
June deadline applications	18,310	15,905	16,255	16,100	13,920	15,305
Offers	11,190	9,845	10,425	10,560	8,635	9,825
Offer rate	61.1%	61.9%	64.1%	65.6%	62.0%	64.2%

P.17 Applicants (all ages) by sex

Statistic	Sex	2011	2012	2013	2014	2015	2016
June deadline applicants	Men	6,155	5,405	5,195	5,015	4,280	4,970
	Women	10,580	9,315	9,920	9,880	8,740	9,355
Placed June deadline applicants	Men	970	905	975	925	840	945
	Women	1,645	1,465	1,570	1,660	1,545	1,705
All placed applicants	Men	1,120	1,145	1,205	1,185	1,180	1,190
	Women	1,870	1,800	1,875	2,045	1,995	2,040

P.18 Applications (all ages) by sex

Statistic	Sex	2011	2012	2013	2014	2015	2016
June deadline applications	Men	6,720	5,855	5,610	5,445	4,600	5,360
	Women	11,585	10,050	10,645	10,655	9,320	9,945
Offers	Men	4,665	4,180	4,320	4,235	3,340	4,025
	Women	6,530	5,670	6,110	6,330	5,300	5,800
Offer rate	Men	69.4%	71.4%	77.0%	77.8%	72.6%	75.1%
	Women	56.3%	56.4%	57.4%	59.4%	56.8%	58.3%

P.19 Applicants (all ages) by POLAR3 quintile

Statistic	POLAR3 quintile	2011	2012	2013	2014	2015	2016
June deadline applicants	Quintile 1	2,410	2,150	2,295	2,275	1,995	2,200
	Quintile 2	3,385	2,965	3,230	3,020	2,700	2,910
	Quintile 3	3,575	3,290	3,370	3,350	3,005	3,320
	Quintile 4	3,805	3,330	3,240	3,415	2,850	3,140
	Quintile 5	3,520	2,955	2,950	2,805	2,430	2,655
Placed June deadline applicants	Quintile 1	405	385	415	435	395	405
	Quintile 2	530	495	560	500	480	545
	Quintile 3	560	570	570	605	580	660
	Quintile 4	600	495	560	615	530	570
	Quintile 5	515	425	435	430	395	445
All placed applicants	Quintile 1	445	475	505	515	495	500
	Quintile 2	605	605	650	635	655	655
	Quintile 3	645	695	695	755	785	810
	Quintile 4	690	615	675	750	695	705
	Quintile 5	600	545	545	555	530	535

P.20 Applications (all ages) by POLAR3 quintile

Statistic	POLAR3 quintile	2011	2012	2013	2014	2015	2016
June deadline applications	Quintile 1	2,750	2,385	2,580	2,525	2,210	2,410
	Quintile 2	3,770	3,205	3,480	3,295	2,910	3,130
	Quintile 3	3,930	3,560	3,615	3,625	3,195	3,520
	Quintile 4	4,125	3,610	3,445	3,680	3,040	3,350
	Quintile 5	3,695	3,110	3,100	2,945	2,535	2,790
Offers	Quintile 1	1,485	1,345	1,525	1,460	1,195	1,375
	Quintile 2	2,155	1,820	2,130	2,000	1,655	1,895
	Quintile 3	2,415	2,265	2,340	2,415	2,025	2,310
	Quintile 4	2,630	2,275	2,290	2,540	1,985	2,220
	Quintile 5	2,485	2,120	2,120	2,125	1,755	1,960
Offer rate	Quintile 1	54.0%	56.4%	59.1%	57.9%	54.1%	57.1%
	Quintile 2	57.2%	56.8%	61.2%	60.7%	56.9%	60.5%
	Quintile 3	61.4%	63.6%	64.7%	66.7%	63.4%	65.6%
	Quintile 4	63.8%	63.0%	66.6%	69.0%	65.4%	66.3%
	Quintile 5	67.2%	68.2%	68.4%	72.2%	69.3%	70.2%

P.21 Applicants (all ages) by ethnic group

Statistic	Ethnic group	2011	2012	2013	2014	2015	2016
June deadline applicants	Asian	1,425	1,400	1,415	1,345	1,155	1,315
	Black	2,635	2,505	2,540	2,750	2,855	3,440
	Mixed	635	595	570	625	510	660
	White	11,800	10,000	10,365	9,955	8,285	8,665
	Other	150	160	155	160	125	155
Placed June deadline applicants	Asian	175	195	200	200	205	205
	Black	400	405	435	470	520	710
	Mixed	100	95	95	105	95	115
	White	1,900	1,655	1,775	1,780	1,535	1,580
	Other	25	15	25	20	20	25
All placed applicants	Asian	220	270	270	295	295	265
	Black	480	550	615	685	825	925
	Mixed	120	115	120	125	130	150
	White	2,130	1,980	2,025	2,080	1,865	1,840
	Other	25	20	35	25	35	30

P.22 Applications (all ages) by ethnic group

Statistic	Ethnic group	2011	2012	2013	2014	2015	2016
June deadline applications	Asian	1,540	1,500	1,500	1,395	1,250	1,385
	Black	2,950	2,740	2,745	2,980	3,020	3,615
	Mixed	700	630	615	685	530	705
	White	12,865	10,790	11,160	10,795	8,880	9,350
	Other	155	170	160	175	135	160
Offers	Asian	1,050	1,055	1,045	1,030	810	940
	Black	1,425	1,385	1,410	1,580	1,510	2,005
	Mixed	430	400	395	460	345	480
	White	8,125	6,860	7,420	7,345	5,825	6,240
	Other	100	105	110	110	85	105
Offer rate	Asian	68.1%	70.2%	69.8%	73.9%	65.0%	67.8%
	Black	48.3%	50.5%	51.4%	53.0%	50.1%	55.5%
	Mixed	61.6%	63.6%	64.8%	66.7%	65.4%	68.1%
	White	63.2%	63.6%	66.5%	68.0%	65.6%	66.7%
	Other	65.4%	61.4%	67.3%	64.2%	61.3%	65.4%

Technical Notes and Definitions

UCAS undergraduate scheme

Adjustment

Adjustment allows applicants who have met and exceeded the terms of their conditional firm offer to seek and find a place at another provider whilst keeping their place at their original firm choice provider.

Clearing

Clearing is a route for applicants that are not placed and holding no offers to find a place on courses with vacancies.

Cycle year

The UCAS application cycle which runs from September to October the following year. For example the 2016 cycle runs from September 2015 through to October 2016.

End of cycle

The point in the cycle to which the numbers in this report refer, and the point at which the cycle is closed such that no more applications or offers can be made, and no more applicants can be placed. Numbers reported at the end of cycle exclude information on a small number of applicants who cancelled during the cycle.

Extra

Applicants who are unsuccessful in obtaining an offer or decline all offers may be eligible to apply through Extra, where they can apply to one further course at a time. Extra operates from 25 February until early July. It provides applicants who are eligible the possibility of obtaining an offer before exam results are published and Clearing starts.

June 30 deadline

The deadline for main scheme applications. Applicants who apply after this date will go directly into Clearing.

Record of Prior Acceptance (RPA)

RPA is an acceptance route used when a provider informs UCAS of applicants it has accepted outside of the normal application process (e.g. individuals who have applied directly to the provider).

Reporting groups

Ethnic group

High level grouping of ethnic origin as declared by the applicant: 'White', 'Black', 'Asian', 'Mixed', 'Other', 'Unknown'. Applicants who declare themselves as 'Unknown' ethnic origin are not reported in these tables, but are included in the associated csv data file.

POLAR3 quintile

Developed by HEFCE, POLAR3 classifies small areas across the UK into five groups according to their level of young participation in Higher Education. Each of these groups represents around 20 per cent of young people and is ranked from Quintile 1 (areas with the lowest young participation rates, considered as the most disadvantaged) to Quintile 5 (highest young participation rates, considered most advantaged). POLAR3 is based on the participation rates of young people between 2005 and 2009 who entered Higher Education between 2005-06 and 2010-11, therefore is most suitable for applicants aged 19 and under. These groups are assigned using the postcode declared by the applicant at the time of their application. If a UK postcode is invalid, considered unsafe for measurement or there is no link to Census geography possible then the applicant is not assigned to a quintile. Applicants with no POLAR3 quintile are not reported.

Sex

Sex as declared by the applicant.

SIMD quintile

Scottish index of multiple deprivation (SIMD) for 2012 identifies small area concentrations of multiple deprivation across all of Scotland, providing a relative measure of deprivation amongst 6505 small areas (data zones) based on 7 socio-economic domains. These small areas are classified into five groups ranked from Quintile 1 (considered the most deprived) to Quintile 5 (considered least deprived), with equal populations in each quintile. Quintiles are assigned using the postcode declared by the applicant, applicants declaring invalid postcodes are classified as 'Not assigned' and are not reported.

SIMD is only defined for applicants domiciled in Scotland, therefore any applicants domiciled outside of Scotland cannot be assigned to an SIMD quintile and so are not reported for this measure.

SIMD is only reported for providers in Scotland. Application and entry rates by SIMD are reported in the 2016 End of Cycle Report and the 2016 cycle January deadline application rate report.

Statistics reported in the tables

All placed applicants

The number of applicants placed for entry into higher education at the provider through one of their choices, including any choices made through Extra, or via Adjustment, Clearing or RPA.

All placed applicants per 10,000 population

The number of total UK domiciled 18 year old placed applicants for entry into higher education at the provider divided by the number of UK 18 year olds in the population, multiplied by 10,000. This gives the number of 18 year olds, for every 10,000 in the population, that were placed at the provider through one of their choices, including any choices made through Extra, or via Adjustment, Clearing or RPA. It is an alternative way of expressing the entry rate to a provider. By referencing the underlying population this statistic shows how the number of placed applicants is changing in relation to the available pool of potential applicants and so gives the chance that somebody from the group will be placed at a provider.

This statistic is only reported for 18 year olds.

Average offer rate

The offer rate that you might expect if the predicted grades and subject choice of applicants were the only factors that influenced whether an applicant was made an offer by the provider. The average offer rate is calculated by dividing applicants according to their specific combination of grades (for A levels the best three predicted grades are used, for BTECs, International Baccalaureate and Scottish Highers and Advanced Highers, predicted grades along with any grades already achieved upon applying are used) and subject choice. For each combination the number of main scheme offers is divided by the number of main scheme applications, to give an overall offer rate. This is then multiplied by the number of applications made by the group for which the average offer rate is being calculated (for example POLAR3 quintile 1), to give an average number of offers for that group. These average number of offers are then added together across all combinations of predicted grade and subject and divided by the number of main scheme applications from the group to give the average offer rate.

The average offer rate does not attempt to control for any other factors that may play a part in the decision to make an offer, such as the subject of the qualifications studied, their relevance to a course, or the grade in each subject; higher numbers of A levels being studied; the exact profile of grades predicted; personal statements; teacher references; interviews; or any other criteria (such as work experience or portfolios) that may be part of the admissions decision.

This statistic is only reported for 18 year olds.

Contribution of group to the average offer rate

The way in which the average offer rate is defined means that the pattern of application and offers of a group (for example POLAR3 quintile 1) will always contribute, in part, to the average offer rate for that group. When this contribution is large, the average offer rate will mainly reflect the patterns for the group, meaning that the value of the average offer rate will be similar to the offer rate, the percentage point difference statistic will be small, and any real difference between the offer rate and what might be expected given the predicted grades and subject choices of the applicants will be difficult to detect.

Values of the contribution of group to the average offer rate range between 0 and 1. The closer the value is to 1 the greater the contribution a group makes to its own average offer rate.

This statistic is only reported for 18 year olds.

Placed June deadline applicants

An applicant who has been placed for entry into higher education at the provider through a June deadline application.

Placed June deadline applicants per 10,000 population

The number of UK domiciled 18 year old placed June deadline applicants at the provider divided by the number of UK 18 year olds in the population, multiplied by 10,000. This gives the number of 18 year olds, for every 10,000 in the population, that were placed at the provider through one of their June deadline applications. It is an alternative way of expressing the entry rate to a provider, but for placed June deadline applicants only. By referencing the underlying population this statistic shows how the number of placed June deadline applicants is changing in relation to the available pool of potential 18 year old applicants and so gives the chance that somebody from the group will be placed at a provider through a June deadline application.

This statistic is only reported for 18 year olds.

June deadline applications

An application (or choice) to a course in higher education to the provider that is made by the June 30 deadline. Each applicant can make up to five choices this way. The number of June deadline applications does not include choices made through the following routes: Clearing, Extra, Adjustment and RPAs. Applications made to October deadline courses received after the October deadline are not included in these statistics.

June deadline applicants

The number of applicants that made at least one application to the provider by the June 30 deadline.

June deadline applicants per 10,000 population

The number of UK domiciled 18 year old June deadline applicants to the provider divided by the number of UK 18 year olds in the population, multiplied by 10,000. This gives the number of 18 year olds, for every 10,000 in the population, who applied by the June 30 deadline. It is equivalent to the application rate. By referencing the underlying population this statistic shows how the number of June deadline applicants is changing in relation to the available pool of potential 18 year old applicants and so gives the chance that somebody from the group will apply to a provider by the June 30 deadline.

This statistic is only reported for 18 year olds.

Offers

An offer is defined as a provider's decision in response to an application to offer a place to an applicant, often subject to the applicant satisfying academic and/or other criteria, via a June deadline application (i.e. does not cover choices made through the following routes: Clearing, Extra, Adjustment and RPAs).

Offer rate

The number of offers made divided by the number of June deadline applications. This gives the proportion of all June deadline applications to the provider that received an offer.

Percentage point difference between offer rate and average offer rate

The offer rate minus the average offer rate.

The percentage point difference can be compared to the expected range of statistical variation resulting from the calculation of the average offer rate using the Average Offer Rate Lookup Table. Where the value of the percentage point difference lies outside of this range, the percentage point difference may be considered to represent a real difference between the offer rate and the average offer rate.

Other definitions

Age

This analysis uses country-specific age definitions that align with the cut off points for school and college cohorts within the different administrations of the UK. For England and Wales, ages are defined on the 31 August, for Northern Ireland on the 1 July and for Scotland on the 28 February the following year. Defining ages in this way matches the assignment of children to school cohorts. For applicants outside of the UK a cohort cut off of 31 August has been used.

Provider

A higher education provider - a university or college.

UK domiciled

Declared area of permanent residence within England, Northern Ireland, Scotland and Wales. Applicants from the Channel Islands and Isle of Man are not included.