

## H24 Heriot-Watt University Edinburgh

**Cycle years:** 2011 - 2016

**Cycle Reference Point:** End of Cycle

**Applicant coverage:** UK domiciled

**Reporting groups:** Sex, POLAR3, SIMD, ethnic group

**Applicant statistics:** June deadline applicants, placed June deadline applicants, all placed applicants, June deadline applicants per 10,000 population, placed June deadline applicants per 10,000 population, all placed applicants per 10,000 population

**Application statistics:** June deadline applications, offers, offer rate, average offer rate, percentage point difference between offer rate and average offer rate, contribution of group to the average offer rate

**Non-disclosure controls:** To avoid the disclosure of information about any individual the following measures are taken

- Applicants, placed applicants, applications and offers are rounded to the nearest 5.
- Applicants/placed applicants per 10,000 population figures are reported as 0 if the applicant/placed applicant figures are rounded to 0.
- All statistics related to the offer rate are not reported when the number of applications for a group is less than 10. The percentage point difference between the offer rate and the average offer rate is not reported when the number of applications for a group is less than 50.
- Offer rates are reported as 0% if there are fewer than 5 offers, and 100% if the number of offers is within 5 of the number of applications. When the offer rate is reported as 0% or 100%, it is reported in italics.

### Contents:

18 year old applicants:	P.1
18 year old applications:	P.2
18 year old applicants by sex:	P.3
18 year old applications by sex:	P.4
18 year old applicants by POLAR3 quintile:	P.7
18 year old applications by POLAR3 quintile:	P.8
18 year old, Scotland domiciled applicants by SIMD quintile:	P.11
18 year old, Scotland domiciled applications by SIMD quintile:	P.12
18 year old applicants by ethnic group:	P.15
18 year old applications by ethnic group:	P.16
Applicants (all ages):	P.19
Applications (all ages):	P.20
Applicants (all ages) by sex:	P.21
Applications (all ages) by sex:	P.22
Applicants (all ages) by POLAR3 quintile:	P.23
Applications (all ages) by POLAR3 quintile:	P.24
Scotland domiciled applicants (all ages) by SIMD quintile:	P.25
Scotland domiciled applications (all ages) by SIMD quintile:	P.26
Applicants (all ages) by ethnic group:	P.27
Applications (all ages) by ethnic group:	P.28

## P.1 18 year old applicants

Statistic	2011	2012	2013	2014	2015	2016
June deadline applicants	3,725	4,555	5,040	5,200	5,515	5,025
Placed June deadline applicants	695	815	930	800	830	925
All placed applicants	780	885	1,015	920	920	1,040
June deadline applicants per 10,000 population	48.4	58.9	66.2	69.0	72.0	67.0
Placed June deadline applicants per 10,000	9.0	10.5	12.2	10.6	10.8	12.3
All placed applicants per 10,000 population	10.1	11.4	13.4	12.2	12.0	13.9

## P.2 18 year old applications

Statistic	2011	2012	2013	2014	2015	2016
June deadline applications	4,375	5,310	5,820	6,080	6,295	5,685
Offers	3,350	4,380	4,815	4,845	5,155	5,070
Offer rate	76.5%	82.5%	82.7%	79.6%	81.9%	89.2%

### P.3 18 year old applicants by sex

Statistic	Sex	2011	2012	2013	2014	2015	2016
June deadline applicants	Men	2,045	2,555	2,935	3,170	3,310	3,010
	Women	1,680	2,000	2,105	2,025	2,200	2,015
Placed June deadline applicants	Men	395	460	525	495	490	575
	Women	295	355	400	310	340	350
All placed applicants	Men	435	500	570	560	550	640
	Women	340	385	445	355	370	400
June deadline applicants per 10,000 population	Men	51.9	64.4	75.1	81.9	84.4	78.4
	Women	44.6	53.1	56.8	55.4	58.9	55.1
Placed June deadline applicants per 10,000 population	Men	10.1	11.5	13.5	12.7	12.4	14.9
	Women	7.9	9.5	10.8	8.4	9.1	9.6
All placed applicants per 10,000 population	Men	11.1	12.6	14.6	14.5	14.0	16.7
	Women	9.1	10.2	12.1	9.7	9.9	10.9

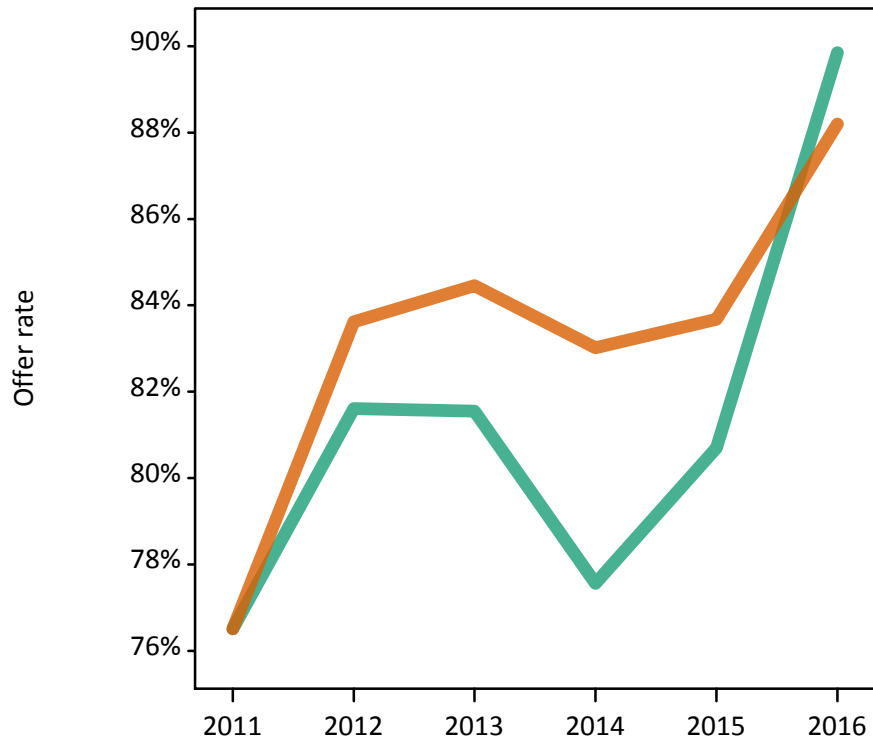
### P.4 18 year old applications by sex

Statistic	Sex	2011	2012	2013	2014	2015	2016
June deadline applications	Men	2,435	3,030	3,420	3,760	3,835	3,440
	Women	1,940	2,285	2,400	2,320	2,465	2,245
Offers	Men	1,865	2,470	2,790	2,920	3,095	3,090
	Women	1,485	1,910	2,025	1,925	2,060	1,980
Offer rate	Men	76.5%	81.6%	81.5%	77.6%	80.7%	89.8%
	Women	76.5%	83.6%	84.5%	83.0%	83.7%	88.2%
Average offer rate	Men	76.8%	81.8%	81.7%	77.7%	81.5%	90.1%
	Women	76.2%	83.3%	84.2%	82.7%	82.4%	87.8%
Percentage point difference between offer rate and average offer rate	Men	-0.2	-0.2	-0.2	-0.2	-0.8	-0.3
	Women	0.3	0.3	0.3	0.3	1.3	0.4
Contribution of group to the average offer rate	Men	0.719	0.730	0.725	0.753	0.734	0.729
	Women	0.648	0.642	0.609	0.600	0.587	0.585

### P.5 18 year old offer rate by sex

Note: The line for a group is not plotted when that group made fewer than 10 applications in any of the years from 2011-2016.

Men  
Women



### P.6 Percentage point difference between 18 year old offer rate and average offer rate by sex

Note: The line for a group is not plotted when that group made fewer than 50 applications in any of the years from 2011-2016.

Men  
Women



## P.7 18 year old applicants by POLAR3 quintile

Statistic	POLAR3 quintile	2011	2012	2013	2014	2015	2016
June deadline applicants	Quintile 1	185	215	260	295	330	270
	Quintile 2	375	475	520	535	580	520
	Quintile 3	595	765	805	860	900	790
	Quintile 4	925	1,095	1,235	1,280	1,325	1,260
	Quintile 5	1,630	1,990	2,205	2,210	2,360	2,165
Placed June deadline applicants	Quintile 1	35	30	40	40	45	35
	Quintile 2	45	90	95	100	85	110
	Quintile 3	125	125	150	135	145	155
	Quintile 4	190	185	230	185	200	215
	Quintile 5	300	390	415	340	355	410
All placed applicants	Quintile 1	40	35	45	55	55	40
	Quintile 2	50	100	105	110	95	125
	Quintile 3	140	130	165	160	165	170
	Quintile 4	210	205	255	210	215	240
	Quintile 5	335	415	450	385	390	465
June deadline applicants per 10,000 population	Quintile 1	12.9	15.2	18.8	21.3	23.5	20.0
	Quintile 2	25.1	31.6	35.2	36.7	39.1	35.9
	Quintile 3	38.7	49.5	52.7	57.2	58.7	52.5
	Quintile 4	59.0	68.9	79.0	83.2	84.6	81.7
	Quintile 5	98.6	118.4	133.4	135.6	141.1	131.0
Placed June deadline applicants per 10,000 population	Quintile 1	2.4	2.0	2.7	2.9	3.2	2.7
	Quintile 2	2.9	5.9	6.3	6.7	5.8	7.5
	Quintile 3	8.0	8.0	10.0	9.0	9.4	10.2
	Quintile 4	12.1	11.7	14.8	12.0	12.8	13.8
	Quintile 5	18.1	23.1	25.0	20.8	21.1	24.8
All placed applicants per 10,000 population	Quintile 1	2.8	2.4	3.2	3.8	3.9	3.0
	Quintile 2	3.5	6.5	7.3	7.4	6.3	8.5
	Quintile 3	9.0	8.3	10.8	10.6	10.7	11.2
	Quintile 4	13.3	13.0	16.2	13.5	13.9	15.7
	Quintile 5	20.3	24.7	27.1	23.6	23.2	28.0

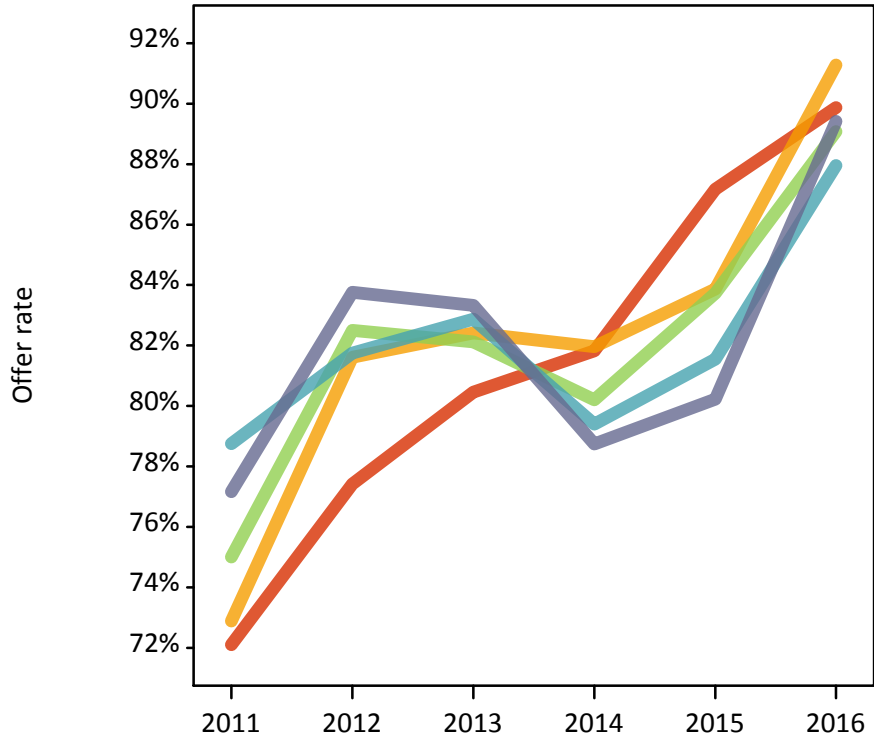
## P.8 18 year old applications by POLAR3 quintile

Statistic	POLAR3 quintile	2011	2012	2013	2014	2015	2016
June deadline applications	Quintile 1	235	250	305	340	375	305
	Quintile 2	450	570	595	655	655	575
	Quintile 3	710	905	925	1,010	1,045	905
	Quintile 4	1,085	1,295	1,440	1,495	1,540	1,420
	Quintile 5	1,885	2,280	2,535	2,570	2,665	2,455
Offers	Quintile 1	170	190	245	280	325	275
	Quintile 2	330	465	490	535	550	525
	Quintile 3	530	745	760	810	875	805
	Quintile 4	855	1,055	1,195	1,185	1,255	1,250
	Quintile 5	1,455	1,910	2,115	2,025	2,140	2,195
Offer rate	Quintile 1	72.1%	77.4%	80.5%	81.8%	87.2%	89.9%
	Quintile 2	72.9%	81.6%	82.4%	82.0%	83.9%	91.3%
	Quintile 3	75.0%	82.5%	82.1%	80.2%	83.7%	89.1%
	Quintile 4	78.7%	81.7%	82.9%	79.4%	81.5%	88.0%
	Quintile 5	77.2%	83.8%	83.3%	78.7%	80.2%	89.4%
Average offer rate	Quintile 1	71.2%	79.1%	81.6%	81.3%	84.2%	87.7%
	Quintile 2	74.9%	82.9%	81.0%	79.8%	80.2%	89.7%
	Quintile 3	75.7%	82.8%	82.3%	79.9%	81.5%	89.0%
	Quintile 4	78.4%	82.3%	83.8%	80.3%	82.7%	89.3%
	Quintile 5	76.7%	82.8%	82.9%	79.0%	81.8%	89.3%
Percentage point difference between offer rate and average offer rate	Quintile 1	0.9	-1.7	-1.1	0.5	3.0	2.2
	Quintile 2	-2.0	-1.3	1.4	2.2	3.7	1.5
	Quintile 3	-0.7	-0.3	-0.1	0.3	2.2	0.1
	Quintile 4	0.3	-0.6	-0.9	-0.9	-1.1	-1.4
	Quintile 5	0.4	1.0	0.4	-0.2	-1.5	0.1
Contribution of group to the average offer rate	Quintile 1	0.185	0.154	0.155	0.161	0.170	0.171
	Quintile 2	0.198	0.193	0.186	0.182	0.182	0.193
	Quintile 3	0.236	0.232	0.221	0.230	0.233	0.235
	Quintile 4	0.327	0.306	0.319	0.308	0.310	0.321
	Quintile 5	0.496	0.489	0.489	0.478	0.477	0.492

### P.9 18 year old offer rate by POLAR3 quintile

Note: The line for a group is not plotted when that group made fewer than 10 applications in any of the years from 2011-2016.

- Quintile 1
- Quintile 2
- Quintile 3
- Quintile 4
- Quintile 5



### P.10 Percentage point difference between 18 year old offer rate and average offer rate by POLAR3 quintile

Note: The line for a group is not plotted when that group made fewer than 50 applications in any of the years from 2011-2016.

- Quintile 1
- Quintile 2
- Quintile 3
- Quintile 4
- Quintile 5



**P.11 18 year old, Scotland domiciled applicants by SIMD quintile**

Statistic	SIMD quintile	2011	2012	2013	2014	2015	2016
June deadline applicants	Quintile 1	165	210	250	265	295	245
	Quintile 2	310	380	390	420	450	370
	Quintile 3	455	595	600	660	655	575
	Quintile 4	690	795	845	870	910	870
	Quintile 5	935	1,150	1,175	1,130	1,240	1,125
Placed June deadline applicants	Quintile 1	35	30	35	45	50	45
	Quintile 2	65	65	80	75	75	85
	Quintile 3	105	115	140	95	105	130
	Quintile 4	135	175	205	150	150	185
	Quintile 5	205	245	255	205	220	270
All placed applicants	Quintile 1	40	30	45	60	55	45
	Quintile 2	75	65	90	95	80	85
	Quintile 3	120	115	140	95	105	130
	Quintile 4	145	180	205	150	155	185
	Quintile 5	235	250	265	210	230	270
June deadline applicants per 10,000 population	Quintile 1	124.4	162.3	189.9	203.7	232.1	197.2
	Quintile 2	258.9	324.6	331.2	361.9	395.6	334.8
	Quintile 3	369.8	491.6	502.1	559.7	565.7	506.2
	Quintile 4	552.0	639.7	683.4	703.0	741.5	720.6
	Quintile 5	732.3	912.2	942.8	914.0	1,013.8	941.4
Placed June deadline applicants per 10,000 population	Quintile 1	25.5	21.4	26.7	35.9	39.2	35.4
	Quintile 2	54.9	53.5	70.0	65.5	67.0	74.7
	Quintile 3	85.5	95.2	115.9	79.6	90.5	114.0
	Quintile 4	109.0	141.6	165.6	122.0	124.0	151.9
	Quintile 5	161.7	193.7	204.6	164.9	181.8	224.5
All placed applicants per 10,000 population	Quintile 1	28.5	22.2	35.1	47.3	43.9	35.4
	Quintile 2	62.4	55.2	78.5	80.1	69.6	76.5
	Quintile 3	99.4	96.8	119.2	81.3	91.4	116.6
	Quintile 4	117.8	144.0	166.4	122.8	128.1	152.8
	Quintile 5	183.7	197.7	212.6	171.3	189.2	227.0



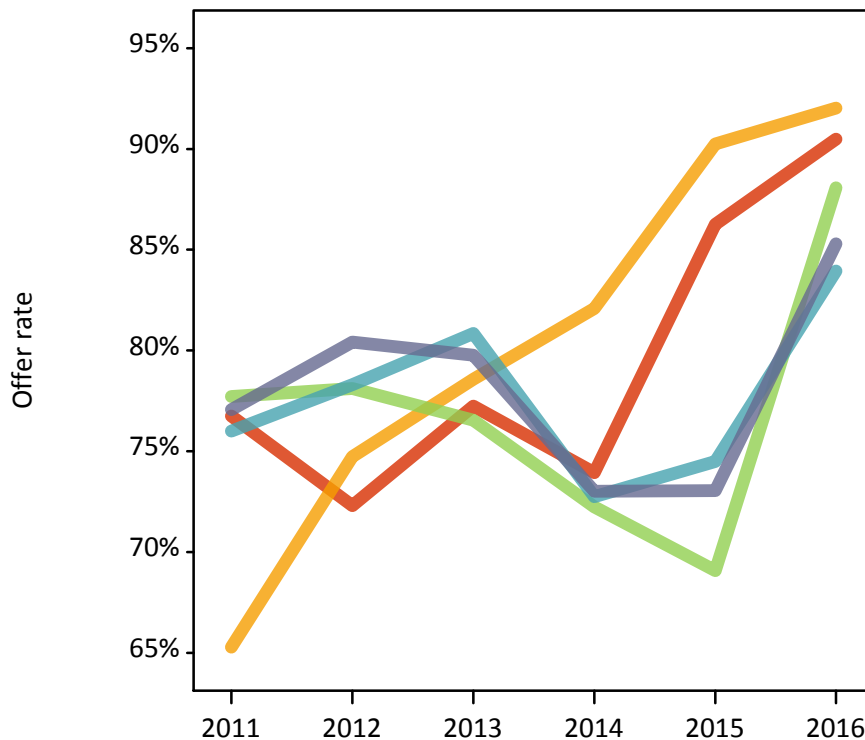
**P.12 18 year old, Scotland domiciled applications by SIMD quintile**

Statistic	SIMD quintile	2011	2012	2013	2014	2015	2016
June deadline applications	Quintile 1	215	260	290	330	340	285
	Quintile 2	385	470	460	520	535	450
	Quintile 3	550	730	715	825	785	680
	Quintile 4	840	960	1,040	1,075	1,095	1,010
	Quintile 5	1,135	1,405	1,445	1,390	1,475	1,335
Offers	Quintile 1	165	190	225	245	295	255
	Quintile 2	250	350	365	425	480	415
	Quintile 3	430	570	550	595	545	600
	Quintile 4	640	750	840	780	815	845
	Quintile 5	875	1,130	1,150	1,015	1,080	1,135
Offer rate	Quintile 1	76.7%	72.3%	77.2%	73.9%	86.3%	90.5%
	Quintile 2	65.3%	74.7%	78.6%	82.1%	90.2%	92.0%
	Quintile 3	77.7%	78.1%	76.5%	72.2%	69.1%	88.1%
	Quintile 4	76.0%	78.3%	80.8%	72.7%	74.5%	83.9%
	Quintile 5	77.1%	80.4%	79.8%	73.0%	73.1%	85.3%
Average offer rate	Quintile 1	77.6%	77.1%	78.2%	74.2%	75.1%	84.7%
	Quintile 2	71.2%	76.2%	78.5%	71.2%	77.8%	85.8%
	Quintile 3	77.2%	77.9%	78.6%	74.1%	74.9%	88.1%
	Quintile 4	75.8%	78.3%	80.3%	75.5%	77.0%	86.3%
	Quintile 5	75.3%	79.1%	79.0%	73.8%	75.2%	86.9%
Percentage point difference between offer rate and average offer rate	Quintile 1	-0.9	-4.8	-1.0	-0.3	11.1	5.8
	Quintile 2	-5.9	-1.5	0.1	10.9	12.5	6.2
	Quintile 3	0.6	0.2	-2.1	-1.8	-5.8	-0.0
	Quintile 4	0.2	-0.0	0.5	-2.8	-2.5	-2.3
	Quintile 5	1.8	1.3	0.8	-0.8	-2.1	-1.6
Contribution of group to the average offer rate	Quintile 1	0.107	0.099	0.116	0.115	0.126	0.105
	Quintile 2	0.174	0.166	0.143	0.166	0.164	0.157
	Quintile 3	0.217	0.233	0.210	0.234	0.211	0.219
	Quintile 4	0.297	0.277	0.294	0.292	0.287	0.298
	Quintile 5	0.407	0.397	0.399	0.364	0.380	0.384

**P.13 18 year old, Scotland domiciled offer rate by SIMD quintile**

Note: The line for a group is not plotted when that group made fewer than 10 applications in any of the years from 2011-2016.

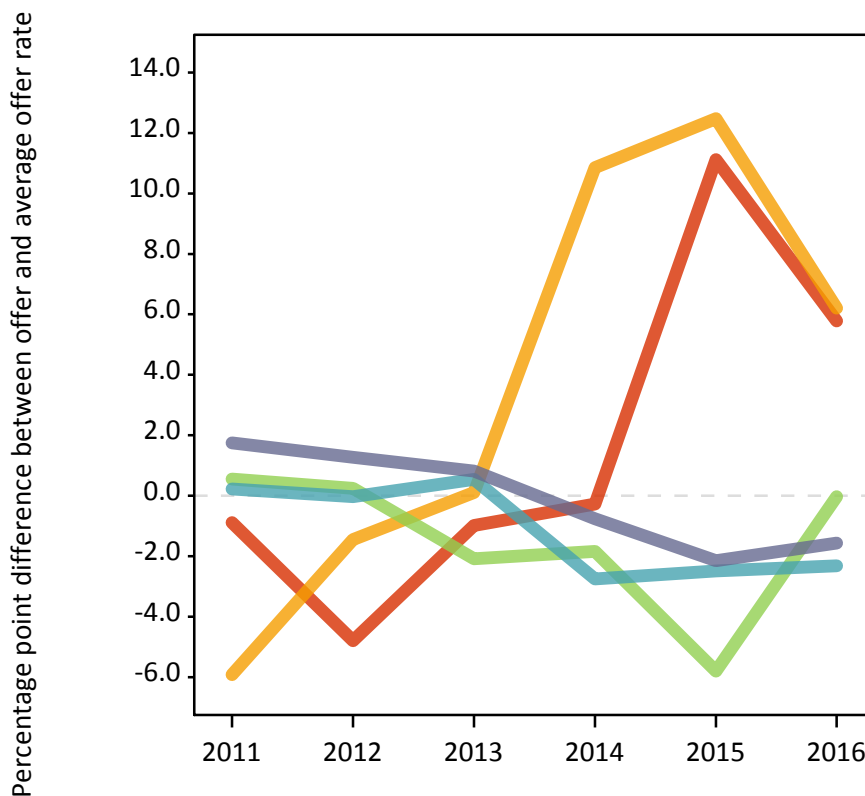
- Quintile 1
- Quintile 2
- Quintile 3
- Quintile 4
- Quintile 5



**P.14 Percentage point difference between 18 year old, Scotland domiciled offer rate and average offer rate by SIMD quintile**

Note: The line for a group is not plotted when that group made fewer than 50 applications in any of the years from 2011-2016.

- Quintile 1
- Quintile 2
- Quintile 3
- Quintile 4
- Quintile 5



## P.15 18 year old applicants by ethnic group

Statistic	Ethnic group	2011	2012	2013	2014	2015	2016
June deadline applicants	Asian	140	240	270	280	345	360
	Black	40	45	80	90	100	100
	Mixed	80	85	135	115	140	135
	White	3,440	4,150	4,510	4,670	4,855	4,365
	Other	10	25	25	25	50	30
Placed June deadline applicants	Asian	30	35	40	35	35	40
	Black	5	5	15	15	15	15
	Mixed	15	10	20	20	20	30
	White	640	760	845	725	755	830
	Other	5	0	5	5	5	5
All placed applicants	Asian	35	40	50	50	45	55
	Black	5	10	20	15	15	20
	Mixed	15	15	20	25	20	40
	White	715	815	915	815	825	920
	Other	5	5	5	5	5	5
June deadline applicants per 10,000 population	Asian	21.9	37.2	40.8	41.1	49.0	50.0
	Black	14.6	16.0	27.3	29.4	31.4	32.6
	Mixed	33.0	33.0	49.2	39.6	45.4	43.2
	White	53.1	64.2	71.7	75.7	77.9	72.2
	Other	13.6	26.0	27.6	29.0	51.9	32.2
Placed June deadline applicants per 10,000 population	Asian	4.4	5.7	5.8	5.0	4.9	5.8
	Black	1.1	2.1	5.1	4.3	4.1	5.1
	Mixed	6.2	4.2	7.0	6.3	5.8	9.5
	White	9.9	11.8	13.5	11.8	12.1	13.7
	Other	3.7	0.0	4.4	4.3	5.2	4.0
All placed applicants per 10,000 population	Asian	5.7	6.3	7.3	7.4	6.2	7.6
	Black	1.8	3.9	7.1	5.6	5.0	6.1
	Mixed	6.6	5.4	8.1	8.0	6.8	12.1
	White	11.0	12.6	14.5	13.2	13.3	15.2
	Other	3.7	3.4	6.6	7.5	6.2	4.0

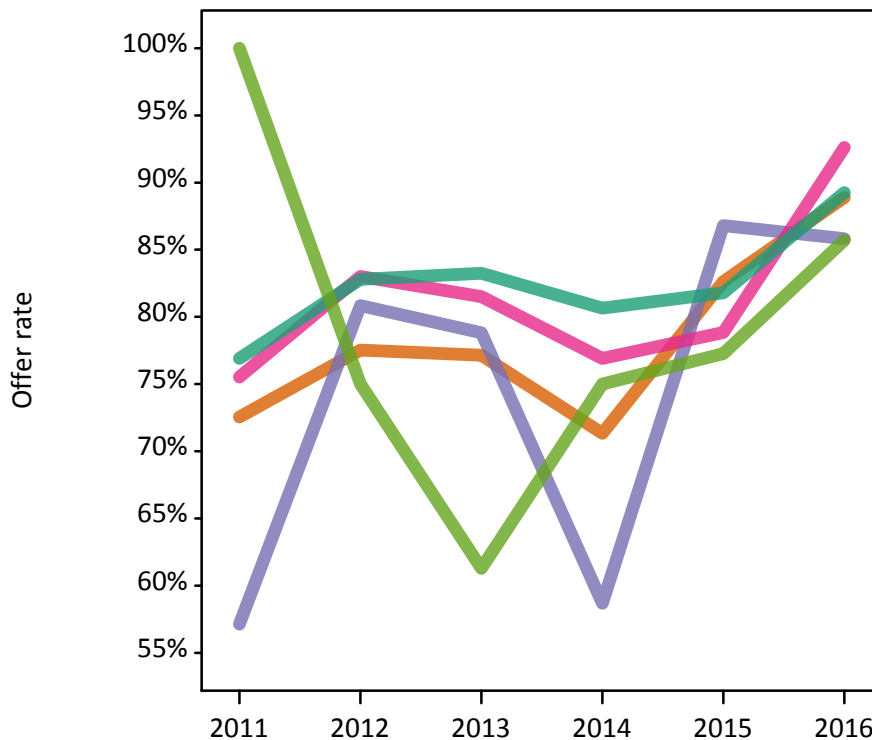
## P.16 18 year old applications by ethnic group

Statistic	Ethnic group	2011	2012	2013	2014	2015	2016
June deadline applications	Asian	165	265	300	320	380	395
	Black	40	45	85	90	105	120
	Mixed	95	100	145	130	155	150
	White	4,045	4,860	5,230	5,490	5,560	4,955
	Other	15	25	30	30	65	35
Offers	Asian	120	205	235	230	315	350
	Black	25	40	65	55	90	105
	Mixed	70	85	120	100	125	140
	White	3,110	4,025	4,355	4,430	4,550	4,420
	Other	10	20	20	20	50	30
Offer rate	Asian	72.6%	77.5%	77.2%	71.3%	82.6%	88.9%
	Black	57.1%	80.9%	78.8%	58.7%	86.8%	85.8%
	Mixed	75.5%	83.0%	81.5%	76.9%	78.8%	92.6%
	White	76.9%	82.8%	83.3%	80.6%	81.8%	89.2%
	Other	100.0%	75.0%	61.3%	75.0%	77.3%	85.7%
Average offer rate	Asian	73.9%	82.1%	78.9%	75.2%	81.5%	88.3%
	Black	64.9%	86.2%	79.8%	71.7%	84.6%	88.5%
	Mixed	73.7%	81.6%	85.3%	79.4%	81.3%	88.9%
	White	76.9%	82.5%	83.0%	80.1%	81.9%	89.4%
	Other	71.1%	83.8%	74.0%	79.7%	80.9%	83.6%
Percentage point difference between offer rate and average offer rate	Asian	-1.4	-4.6	-1.7	-3.8	1.1	0.6
	Black	N/A	N/A	-1.0	-13.1	2.2	-2.6
	Mixed	1.8	1.4	-3.8	-2.4	-2.5	3.8
	White	0.0	0.3	0.3	0.6	-0.1	-0.1
	Other	N/A	N/A	N/A	N/A	-3.7	N/A
Contribution of group to the average offer rate	Asian	0.127	0.148	0.134	0.144	0.158	0.181
	Black	0.209	0.152	0.149	0.190	0.182	0.184
	Mixed	0.138	0.160	0.124	0.125	0.111	0.137
	White	0.934	0.926	0.911	0.916	0.899	0.891
	Other	0.136	0.125	0.166	0.106	0.094	0.158

**P.17 18 year old offer rate by ethnic group**

Note: The line for a group is not plotted when that group made fewer than 10 applications in any of the years from 2011-2016.

- Asian
- Black
- Mixed
- White
- Other



**P.18 Percentage point difference between 18 year old offer rate and average offer rate by ethnic group**

Note: The line for a group is not plotted when that group made fewer than 50 applications in any of the years from 2011-2016.

- Asian
- Black
- Mixed
- White
- Other



### P.19 Applicants (all ages)

Statistic	2011	2012	2013	2014	2015	2016
June deadline applicants	6,155	7,240	7,895	8,220	8,600	8,190
Placed June deadline applicants	1,170	1,255	1,570	1,340	1,415	1,615
All placed applicants	1,345	1,375	1,730	1,535	1,585	1,780

### P.20 Applications (all ages)

Statistic	2011	2012	2013	2014	2015	2016
June deadline applications	7,535	8,705	9,450	9,845	10,065	9,565
Offers	5,045	6,060	6,945	6,850	7,405	7,630
Offer rate	66.9%	69.6%	73.5%	69.6%	73.5%	79.8%

### P.21 Applicants (all ages) by sex

Statistic	Sex	2011	2012	2013	2014	2015	2016
June deadline applicants	Men	3,375	4,045	4,585	4,935	5,185	4,955
	Women	2,780	3,195	3,310	3,285	3,415	3,240
Placed June deadline applicants	Men	630	685	880	785	815	950
	Women	540	570	690	555	600	665
All placed applicants	Men	715	750	965	910	920	1,055
	Women	625	620	765	625	665	730

### P.22 Applications (all ages) by sex

Statistic	Sex	2011	2012	2013	2014	2015	2016
June deadline applications	Men	4,165	4,915	5,530	5,980	6,145	5,820
	Women	3,370	3,790	3,920	3,865	3,920	3,745
Offers	Men	2,770	3,450	4,015	4,105	4,465	4,630
	Women	2,275	2,610	2,930	2,745	2,940	3,000
Offer rate	Men	66.5%	70.3%	72.6%	68.7%	72.7%	79.5%
	Women	67.5%	68.8%	74.7%	71.0%	74.9%	80.2%

### P.23 Applicants (all ages) by POLAR3 quintile

Statistic	POLAR3 quintile	2011	2012	2013	2014	2015	2016
June deadline applicants	Quintile 1	410	440	495	545	600	560
	Quintile 2	675	770	850	895	920	875
	Quintile 3	1,025	1,265	1,320	1,385	1,450	1,325
	Quintile 4	1,515	1,705	1,905	2,000	2,050	2,035
	Quintile 5	2,510	3,025	3,300	3,380	3,550	3,355
Placed June deadline applicants	Quintile 1	70	70	90	90	80	100
	Quintile 2	100	135	160	160	150	180
	Quintile 3	200	210	260	225	235	280
	Quintile 4	320	270	390	320	355	385
	Quintile 5	475	565	670	540	595	665
All placed applicants	Quintile 1	80	80	110	110	90	115
	Quintile 2	120	150	185	185	175	200
	Quintile 3	230	225	290	260	275	305
	Quintile 4	360	305	425	365	385	420
	Quintile 5	550	610	720	610	655	735

### P.24 Applications (all ages) by POLAR3 quintile

Statistic	POLAR3 quintile	2011	2012	2013	2014	2015	2016
June deadline applications	Quintile 1	545	545	615	660	725	690
	Quintile 2	830	940	1,035	1,105	1,040	1,005
	Quintile 3	1,260	1,540	1,580	1,675	1,705	1,580
	Quintile 4	1,860	2,070	2,300	2,395	2,460	2,330
	Quintile 5	3,015	3,560	3,890	3,990	4,100	3,910
Offers	Quintile 1	320	325	410	460	500	525
	Quintile 2	510	645	735	780	805	810
	Quintile 3	815	1,065	1,130	1,125	1,275	1,245
	Quintile 4	1,290	1,420	1,695	1,660	1,795	1,850
	Quintile 5	2,095	2,580	2,955	2,810	3,015	3,165
Offer rate	Quintile 1	58.9%	59.6%	67.2%	69.7%	69.3%	76.0%
	Quintile 2	61.6%	68.8%	71.3%	70.8%	77.3%	80.7%
	Quintile 3	64.5%	69.2%	71.5%	67.1%	74.7%	78.8%
	Quintile 4	69.2%	68.6%	73.7%	69.4%	73.0%	79.5%
	Quintile 5	69.5%	72.5%	75.9%	70.4%	73.5%	80.9%



### P.25 Scotland domiciled applicants (all ages) by SIMD quintile

Statistic	SIMD quintile	2011	2012	2013	2014	2015	2016
June deadline applicants	Quintile 1	420	495	555	535	620	590
	Quintile 2	640	750	725	775	825	760
	Quintile 3	820	970	1,030	1,145	1,110	1,070
	Quintile 4	1,110	1,295	1,320	1,375	1,445	1,410
	Quintile 5	1,500	1,805	1,840	1,795	1,910	1,795
Placed June deadline applicants	Quintile 1	85	85	105	100	110	120
	Quintile 2	135	120	165	150	165	195
	Quintile 3	175	170	240	165	200	245
	Quintile 4	240	260	325	260	255	315
	Quintile 5	325	365	435	335	370	430
All placed applicants	Quintile 1	100	90	125	130	125	120
	Quintile 2	150	130	190	190	175	195
	Quintile 3	210	175	250	170	215	255
	Quintile 4	270	270	335	265	270	325
	Quintile 5	375	380	455	350	385	435

### P.26 Scotland domiciled applications (all ages) by SIMD quintile

Statistic	SIMD quintile	2011	2012	2013	2014	2015	2016
June deadline applications	Quintile 1	570	640	695	675	750	715
	Quintile 2	845	970	920	995	1,010	960
	Quintile 3	1,045	1,215	1,285	1,480	1,365	1,320
	Quintile 4	1,405	1,605	1,640	1,705	1,760	1,690
	Quintile 5	1,885	2,245	2,345	2,265	2,345	2,185
Offers	Quintile 1	330	350	420	430	540	515
	Quintile 2	480	565	605	665	760	775
	Quintile 3	690	790	860	860	850	990
	Quintile 4	945	1,050	1,185	1,095	1,170	1,270
	Quintile 5	1,300	1,540	1,690	1,465	1,575	1,675
Offer rate	Quintile 1	57.9%	54.5%	60.5%	63.6%	72.0%	72.1%
	Quintile 2	56.7%	58.0%	65.7%	66.8%	75.5%	80.6%
	Quintile 3	66.2%	65.0%	66.8%	58.1%	62.4%	74.8%
	Quintile 4	67.5%	65.5%	72.1%	64.4%	66.6%	75.1%
	Quintile 5	68.9%	68.5%	72.2%	64.8%	67.1%	76.7%

### P.27 Applicants (all ages) by ethnic group

Statistic	Ethnic group	2011	2012	2013	2014	2015	2016
June deadline applicants	Asian	335	465	500	530	610	645
	Black	145	135	175	205	225	210
	Mixed	150	165	190	200	215	235
	White	5,475	6,395	6,930	7,180	7,400	6,960
	Other	25	50	55	65	100	80
Placed June deadline applicants	Asian	65	60	75	65	85	95
	Black	15	15	25	20	25	35
	Mixed	35	25	30	35	25	50
	White	1,045	1,140	1,420	1,200	1,255	1,420
	Other	5	10	10	5	10	10
All placed applicants	Asian	80	70	90	90	100	120
	Black	15	20	35	30	30	40
	Mixed	35	30	35	40	35	55
	White	1,185	1,225	1,525	1,345	1,385	1,545
	Other	5	15	10	15	15	10

### P.28 Applications (all ages) by ethnic group

Statistic	Ethnic group	2011	2012	2013	2014	2015	2016
June deadline applications	Asian	420	545	600	625	690	740
	Black	170	150	190	220	250	255
	Mixed	175	200	230	235	240	265
	White	6,700	7,720	8,310	8,635	8,690	8,140
	Other	35	60	65	75	125	95
Offers	Asian	245	335	390	370	515	565
	Black	70	90	110	110	160	180
	Mixed	125	130	165	160	165	215
	White	4,565	5,445	6,195	6,150	6,440	6,565
	Other	20	35	35	40	80	55
Offer rate	Asian	58.3%	61.5%	65.1%	58.9%	74.2%	76.4%
	Black	40.6%	58.6%	58.9%	49.3%	62.7%	71.1%
	Mixed	70.6%	66.2%	71.7%	67.1%	69.5%	80.8%
	White	68.1%	70.6%	74.6%	71.2%	74.1%	80.7%
	Other	52.8%	61.0%	54.7%	49.4%	62.7%	60.0%

## Technical Notes and Definitions

### UCAS undergraduate scheme

#### Adjustment

Adjustment allows applicants who have met and exceeded the terms of their conditional firm offer to seek and find a place at another provider whilst keeping their place at their original firm choice provider.

#### Clearing

Clearing is a route for applicants that are not placed and holding no offers to find a place on courses with vacancies.

#### Cycle year

The UCAS application cycle which runs from September to October the following year. For example the 2016 cycle runs from September 2015 through to October 2016.

#### End of cycle

The point in the cycle to which the numbers in this report refer, and the point at which the cycle is closed such that no more applications or offers can be made, and no more applicants can be placed. Numbers reported at the end of cycle exclude information on a small number of applicants who cancelled during the cycle.

#### Extra

Applicants who are unsuccessful in obtaining an offer or decline all offers may be eligible to apply through Extra, where they can apply to one further course at a time. Extra operates from 25 February until early July. It provides applicants who are eligible the possibility of obtaining an offer before exam results are published and Clearing starts.

#### June 30 deadline

The deadline for main scheme applications. Applicants who apply after this date will go directly into Clearing.

#### Record of Prior Acceptance (RPA)

RPA is an acceptance route used when a provider informs UCAS of applicants it has accepted outside of the normal application process (e.g. individuals who have applied directly to the provider).

### Reporting groups

#### Ethnic group

High level grouping of ethnic origin as declared by the applicant: 'White', 'Black', 'Asian', 'Mixed', 'Other', 'Unknown'. Applicants who declare themselves as 'Unknown' ethnic origin are not reported in these tables, but are included in the associated csv data file.

#### POLAR3 quintile

Developed by HEFCE, POLAR3 classifies small areas across the UK into five groups according to their level of young participation in Higher Education. Each of these groups represents around 20 per cent of young people and is ranked from Quintile 1 (areas with the lowest young participation rates, considered as the most disadvantaged) to Quintile 5 (highest young participation rates, considered most advantaged). POLAR3 is based on the participation rates of young people between 2005 and 2009 who entered Higher Education between 2005-06 and 2010-11, therefore is most suitable for applicants aged 19 and under. These groups are assigned using the postcode declared by the applicant at the time of their application. If a UK postcode is invalid, considered unsafe for measurement or there is no link to Census geography possible then the applicant is not assigned to a quintile. Applicants with no POLAR3 quintile are not reported.

#### Sex

Sex as declared by the applicant.

### **SIMD quintile**

Scottish index of multiple deprivation (SIMD) for 2012 identifies small area concentrations of multiple deprivation across all of Scotland, providing a relative measure of deprivation amongst 6505 small areas (data zones) based on 7 socio-economic domains. These small areas are classified into five groups ranked from Quintile 1 (considered the most deprived) to Quintile 5 (considered least deprived), with equal populations in each quintile. Quintiles are assigned using the postcode declared by the applicant, applicants declaring invalid postcodes are classified as 'Not assigned' and are not reported.

SIMD is only defined for applicants domiciled in Scotland, therefore any applicants domiciled outside of Scotland cannot be assigned to an SIMD quintile and so are not reported for this measure.

SIMD is only reported for providers in Scotland. Application and entry rates by SIMD are reported in the 2016 End of Cycle Report and the 2016 cycle January deadline application rate report.

### **Statistics reported in the tables**

#### **All placed applicants**

The number of applicants placed for entry into higher education at the provider through one of their choices, including any choices made through Extra, or via Adjustment, Clearing or RPA.

#### **All placed applicants per 10,000 population**

The number of total UK domiciled 18 year old placed applicants for entry into higher education at the provider divided by the number of UK 18 year olds in the population, multiplied by 10,000. This gives the number of 18 year olds, for every 10,000 in the population, that were placed at the provider through one of their choices, including any choices made through Extra, or via Adjustment, Clearing or RPA. It is an alternative way of expressing the entry rate to a provider. By referencing the underlying population this statistic shows how the number of placed applicants is changing in relation to the available pool of potential applicants and so gives the chance that somebody from the group will be placed at a provider.

This statistic is only reported for 18 year olds.

#### **Average offer rate**

The offer rate that you might expect if the predicted grades and subject choice of applicants were the only factors that influenced whether an applicant was made an offer by the provider. The average offer rate is calculated by dividing applicants according to their specific combination of grades (for A levels the best three predicted grades are used, for BTECs, International Baccalaureate and Scottish Highers and Advanced Highers, predicted grades along with any grades already achieved upon applying are used) and subject choice. For each combination the number of main scheme offers is divided by the number of main scheme applications, to give an overall offer rate. This is then multiplied by the number of applications made by the group for which the average offer rate is being calculated (for example POLAR3 quintile 1), to give an average number of offers for that group. These average number of offers are then added together across all combinations of predicted grade and subject and divided by the number of main scheme applications from the group to give the average offer rate.

The average offer rate does not attempt to control for any other factors that may play a part in the decision to make an offer, such as the subject of the qualifications studied, their relevance to a course, or the grade in each subject; higher numbers of A levels being studied; the exact profile of grades predicted; personal statements; teacher references; interviews; or any other criteria (such as work experience or portfolios) that may be part of the admissions decision.

This statistic is only reported for 18 year olds.

### Contribution of group to the average offer rate

The way in which the average offer rate is defined means that the pattern of application and offers of a group (for example POLAR3 quintile 1) will always contribute, in part, to the average offer rate for that group. When this contribution is large, the average offer rate will mainly reflect the patterns for the group, meaning that the value of the average offer rate will be similar to the offer rate, the percentage point difference statistic will be small, and any real difference between the offer rate and what might be expected given the predicted grades and subject choices of the applicants will be difficult to detect.

Values of the contribution of group to the average offer rate range between 0 and 1. The closer the value is to 1 the greater the contribution a group makes to its own average offer rate.

This statistic is only reported for 18 year olds.

### Placed June deadline applicants

An applicant who has been placed for entry into higher education at the provider through a June deadline application.

### Placed June deadline applicants per 10,000 population

The number of UK domiciled 18 year old placed June deadline applicants at the provider divided by the number of UK 18 year olds in the population, multiplied by 10,000. This gives the number of 18 year olds, for every 10,000 in the population, that were placed at the provider through one of their June deadline applications. It is an alternative way of expressing the entry rate to a provider, but for placed June deadline applicants only. By referencing the underlying population this statistic shows how the number of placed June deadline applicants is changing in relation to the available pool of potential 18 year old applicants and so gives the chance that somebody from the group will be placed at a provider through a June deadline application.

This statistic is only reported for 18 year olds.

### June deadline applications

An application (or choice) to a course in higher education to the provider that is made by the June 30 deadline. Each applicant can make up to five choices this way. The number of June deadline applications does not include choices made through the following routes: Clearing, Extra, Adjustment and RPAs. Applications made to October deadline courses received after the October deadline are not included in these statistics.

### June deadline applicants

The number of applicants that made at least one application to the provider by the June 30 deadline.

### June deadline applicants per 10,000 population

The number of UK domiciled 18 year old June deadline applicants to the provider divided by the number of UK 18 year olds in the population, multiplied by 10,000. This gives the number of 18 year olds, for every 10,000 in the population, who applied by the June 30 deadline. It is equivalent to the application rate. By referencing the underlying population this statistic shows how the number of June deadline applicants is changing in relation to the available pool of potential 18 year old applicants and so gives the chance that somebody from the group will apply to a provider by the June 30 deadline.

This statistic is only reported for 18 year olds.

### Offers

An offer is defined as a provider's decision in response to an application to offer a place to an applicant, often subject to the applicant satisfying academic and/or other criteria, via a June deadline application (i.e. does not cover choices made through the following routes: Clearing, Extra, Adjustment and RPAs).

### Offer rate

The number of offers made divided by the number of June deadline applications. This gives the proportion of all June deadline applications to the provider that received an offer.

### Percentage point difference between offer rate and average offer rate

The offer rate minus the average offer rate.

The percentage point difference can be compared to the expected range of statistical variation resulting from the calculation of the average offer rate using the Average Offer Rate Lookup Table. Where the value of the percentage point difference lies outside of this range, the percentage point difference may be considered to represent a real difference between the offer rate and the average offer rate.

### Other definitions

#### Age

This analysis uses country-specific age definitions that align with the cut off points for school and college cohorts within the different administrations of the UK. For England and Wales, ages are defined on the 31 August, for Northern Ireland on the 1 July and for Scotland on the 28 February the following year. Defining ages in this way matches the assignment of children to school cohorts. For applicants outside of the UK a cohort cut off of 31 August has been used.

#### Provider

A higher education provider - a university or college.

#### UK domiciled

Declared area of permanent residence within England, Northern Ireland, Scotland and Wales. Applicants from the Channel Islands and Isle of Man are not included.