

H12 Harper Adams University

Cycle years: 2011 - 2016

Cycle Reference Point: End of Cycle

Applicant coverage: UK domiciled

Reporting groups: Sex, POLAR3, ethnic group

Applicant statistics: June deadline applicants, placed June deadline applicants, all placed applicants, June deadline applicants per 10,000 population, placed June deadline applicants per 10,000 population, all placed applicants per 10,000 population

Application statistics: June deadline applications, offers, offer rate, average offer rate, percentage point difference between offer rate and average offer rate, contribution of group to the average offer rate

Non-disclosure controls: To avoid the disclosure of information about any individual the following measures are taken

- Applicants, placed applicants, applications and offers are rounded to the nearest 5.
- Applicants/placed applicants per 10,000 population figures are reported as 0 if the applicant/placed applicant figures are rounded to 0.
- All statistics related to the offer rate are not reported when the number of applications for a group is less than 10. The percentage point difference between the offer rate and the average offer rate is not reported when the number of applications for a group is less than 50.
- Offer rates are reported as 0% if there are fewer than 5 offers, and 100% if the number of offers is within 5 of the number of applications. When the offer rate is reported as 0% or 100%, it is reported in italics.

Contents:

18 year old applicants:	P.1
18 year old applications:	P.2
18 year old applicants by sex:	P.3
18 year old applications by sex:	P.4
18 year old applicants by POLAR3 quintile:	P.7
18 year old applications by POLAR3 quintile:	P.8
18 year old applicants by ethnic group:	P.11
18 year old applications by ethnic group:	P.12
Applicants (all ages):	P.15
Applications (all ages):	P.16
Applicants (all ages) by sex:	P.17
Applications (all ages) by sex:	P.18
Applicants (all ages) by POLAR3 quintile:	P.19
Applications (all ages) by POLAR3 quintile:	P.20
Applicants (all ages) by ethnic group:	P.21
Applications (all ages) by ethnic group:	P.22

P.1 18 year old applicants

Statistic	2011	2012	2013	2014	2015	2016
June deadline applicants	1,205	1,270	1,205	1,250	1,295	1,320
Placed June deadline applicants	420	460	420	405	440	420
All placed applicants	450	500	465	435	495	450
June deadline applicants per 10,000 population	15.6	16.4	15.9	16.6	16.9	17.6
Placed June deadline applicants per 10,000	5.4	5.9	5.5	5.4	5.8	5.6
All placed applicants per 10,000 population	5.8	6.5	6.1	5.8	6.4	6.0

P.2 18 year old applications

Statistic	2011	2012	2013	2014	2015	2016
June deadline applications	1,600	1,705	1,670	1,730	1,820	1,805
Offers	1,055	1,290	1,205	1,200	1,210	1,135
Offer rate	66.0%	75.6%	71.9%	69.3%	66.5%	62.7%

P.3 18 year old applicants by sex

Statistic	Sex	2011	2012	2013	2014	2015	2016
June deadline applicants	Men	530	530	520	480	500	470
	Women	675	745	690	770	795	855
Placed June deadline applicants	Men	220	215	205	195	210	190
	Women	200	245	215	210	230	230
All placed applicants	Men	235	235	225	210	230	195
	Women	215	270	240	225	265	250
June deadline applicants per 10,000 population	Men	13.4	13.3	13.3	12.4	12.7	12.2
	Women	17.9	19.7	18.6	21.1	21.2	23.4
Placed June deadline applicants per 10,000 population	Men	5.6	5.4	5.3	5.1	5.4	4.9
	Women	5.3	6.5	5.8	5.7	6.1	6.3
All placed applicants per 10,000 population	Men	5.9	5.9	5.8	5.5	5.8	5.1
	Women	5.7	7.1	6.4	6.1	7.1	6.9

P.4 18 year old applications by sex

Statistic	Sex	2011	2012	2013	2014	2015	2016
June deadline applications	Men	770	775	775	730	775	715
	Women	835	925	900	1,000	1,045	1,090
Offers	Men	540	630	605	575	580	510
	Women	520	655	600	625	630	625
Offer rate	Men	70.1%	81.2%	78.1%	78.7%	75.1%	71.3%
	Women	62.2%	71.0%	66.6%	62.5%	60.1%	57.1%
Average offer rate	Men	70.6%	81.1%	78.0%	77.3%	75.6%	70.7%
	Women	61.7%	71.0%	66.8%	63.5%	59.7%	57.5%
Percentage point difference between offer rate and average offer rate	Men	-0.5	0.1	0.2	1.4	-0.5	0.5
	Women	0.5	-0.1	-0.2	-1.0	0.4	-0.4
Contribution of group to the average offer rate	Men	0.694	0.669	0.700	0.672	0.650	0.617
	Women	0.718	0.722	0.742	0.759	0.740	0.750

P.5 18 year old offer rate by sex

Note: The line for a group is not plotted when that group made fewer than 10 applications in any of the years from 2011-2016.

Men
Women



P.6 Percentage point difference between 18 year old offer rate and average offer rate by sex

Note: The line for a group is not plotted when that group made fewer than 50 applications in any of the years from 2011-2016.

Men
Women



P.7 18 year old applicants by POLAR3 quintile

Statistic	POLAR3 quintile	2011	2012	2013	2014	2015	2016
June deadline applicants	Quintile 1	85	70	90	90	105	105
	Quintile 2	130	150	125	155	135	150
	Quintile 3	210	250	230	220	245	220
	Quintile 4	370	370	350	340	375	380
	Quintile 5	405	430	410	440	425	460
Placed June deadline applicants	Quintile 1	15	15	25	20	25	15
	Quintile 2	35	35	30	40	40	40
	Quintile 3	75	95	90	65	75	70
	Quintile 4	135	140	120	115	135	120
	Quintile 5	155	175	155	165	165	170
All placed applicants	Quintile 1	20	20	25	20	25	15
	Quintile 2	40	40	40	40	45	40
	Quintile 3	80	100	105	70	90	75
	Quintile 4	145	150	130	125	155	130
	Quintile 5	160	190	170	180	180	180
June deadline applicants per 10,000 population	Quintile 1	5.8	5.0	6.6	6.6	7.5	7.6
	Quintile 2	8.8	10.0	8.5	10.6	9.2	10.4
	Quintile 3	13.6	16.2	15.1	14.8	16.0	14.8
	Quintile 4	23.6	23.3	22.4	22.2	24.0	24.6
	Quintile 5	24.4	25.5	24.7	27.0	25.5	27.8
Placed June deadline applicants per 10,000 population	Quintile 1	1.2	1.1	1.7	1.3	1.6	1.1
	Quintile 2	2.3	2.5	2.2	2.8	2.8	2.8
	Quintile 3	4.9	6.1	6.0	4.5	4.9	4.8
	Quintile 4	8.7	8.8	7.7	7.4	8.6	7.9
	Quintile 5	9.2	10.3	9.4	10.1	9.8	10.3
All placed applicants per 10,000 population	Quintile 1	1.4	1.3	1.7	1.3	1.8	1.3
	Quintile 2	2.6	2.7	2.6	2.9	3.0	2.9
	Quintile 3	5.3	6.4	6.8	4.7	5.8	4.9
	Quintile 4	9.3	9.5	8.3	8.2	9.9	8.5
	Quintile 5	9.8	11.4	10.2	11.0	10.6	11.0

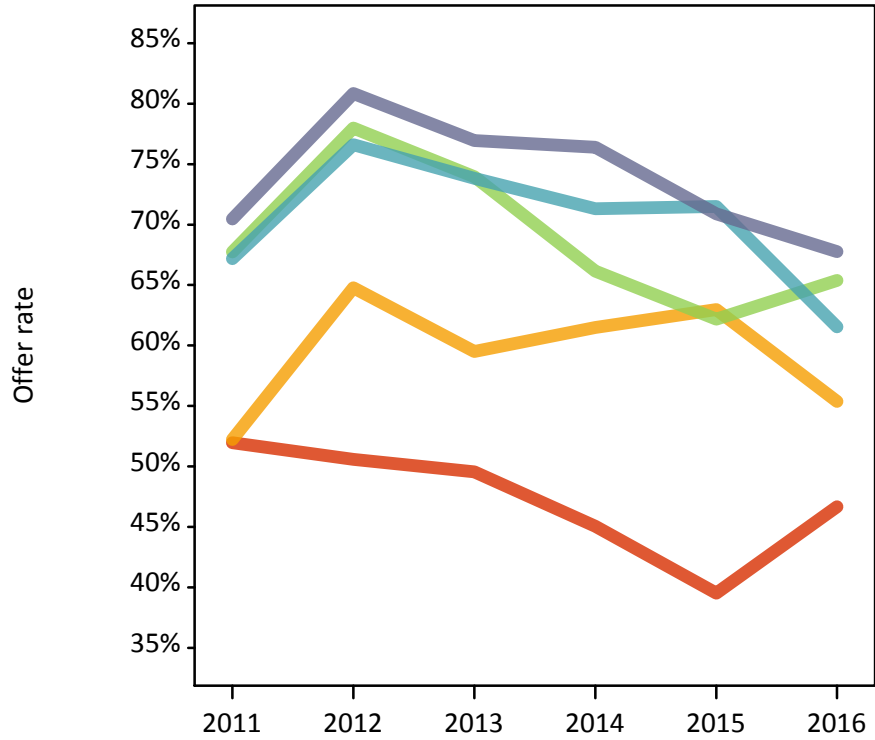
P.8 18 year old applications by POLAR3 quintile

Statistic	POLAR3 quintile	2011	2012	2013	2014	2015	2016
June deadline applications	Quintile 1	100	85	115	110	125	120
	Quintile 2	155	195	165	200	190	195
	Quintile 3	280	325	310	320	350	310
	Quintile 4	510	500	485	495	545	530
	Quintile 5	545	595	600	605	610	645
Offers	Quintile 1	55	45	55	50	50	55
	Quintile 2	80	125	95	125	120	110
	Quintile 3	190	255	230	210	215	200
	Quintile 4	340	385	360	355	390	325
	Quintile 5	385	480	460	465	430	435
Offer rate	Quintile 1	52.0%	50.6%	49.6%	45.0%	39.5%	46.7%
	Quintile 2	52.2%	64.8%	59.5%	61.5%	63.0%	55.4%
	Quintile 3	67.7%	78.0%	74.0%	66.1%	62.2%	65.4%
	Quintile 4	67.2%	76.6%	73.8%	71.3%	71.5%	61.6%
	Quintile 5	70.5%	80.8%	77.0%	76.4%	70.9%	67.8%
Average offer rate	Quintile 1	53.5%	62.3%	56.4%	50.5%	50.0%	48.1%
	Quintile 2	57.8%	68.8%	67.7%	59.9%	57.4%	55.1%
	Quintile 3	67.6%	74.8%	71.7%	68.9%	63.8%	63.6%
	Quintile 4	66.3%	78.2%	72.6%	72.3%	69.9%	62.1%
	Quintile 5	69.4%	78.2%	75.6%	73.6%	71.0%	68.0%
Percentage point difference between offer rate and average offer rate	Quintile 1	-1.5	-11.7	-6.9	-5.5	-10.5	-1.5
	Quintile 2	-5.5	-4.0	-8.2	1.6	5.6	0.3
	Quintile 3	0.1	3.2	2.3	-2.8	-1.6	1.8
	Quintile 4	0.9	-1.6	1.2	-1.0	1.6	-0.5
	Quintile 5	1.0	2.6	1.4	2.8	-0.1	-0.2
Contribution of group to the average offer rate	Quintile 1	0.236	0.147	0.200	0.180	0.209	0.177
	Quintile 2	0.208	0.219	0.186	0.214	0.194	0.243
	Quintile 3	0.278	0.277	0.269	0.259	0.254	0.242
	Quintile 4	0.406	0.382	0.366	0.357	0.390	0.359
	Quintile 5	0.441	0.434	0.461	0.421	0.418	0.451

P.9 18 year old offer rate by POLAR3 quintile

Note: The line for a group is not plotted when that group made fewer than 10 applications in any of the years from 2011-2016.

- Quintile 1
- Quintile 2
- Quintile 3
- Quintile 4
- Quintile 5



P.10 Percentage point difference between 18 year old offer rate and average offer rate by POLAR3 quintile

Note: The line for a group is not plotted when that group made fewer than 50 applications in any of the years from 2011-2016.

- Quintile 1
- Quintile 2
- Quintile 3
- Quintile 4
- Quintile 5



P.11 18 year old applicants by ethnic group

Statistic	Ethnic group	2011	2012	2013	2014	2015	2016
June deadline applicants	Asian	5	10	5	5	5	10
	Black	10	5	5	5	5	5
	Mixed	15	10	10	10	15	15
	White	1,175	1,240	1,180	1,225	1,265	1,280
	Other	0	5	0	0	0	5
Placed June deadline applicants	Asian	0	0	0	0	0	0
	Black	0	0	0	0	0	0
	Mixed	0	5	0	0	0	0
	White	415	455	420	400	440	420
	Other	0	0	0	0	0	0
All placed applicants	Asian	0	0	0	0	0	0
	Black	0	0	0	0	0	0
	Mixed	0	5	0	0	5	0
	White	445	495	460	435	490	445
	Other	0	0	0	0	0	0
June deadline applicants per 10,000 population	Asian	0.5	1.2	1.1	1.0	0.7	1.4
	Black	2.9	1.4	1.0	1.3	2.2	2.2
	Mixed	5.8	4.2	4.1	4.2	4.9	5.4
	White	18.2	19.2	18.8	19.9	20.3	21.2
	Other	0.0	3.4	0.0	0.0	0.0	4.0
Placed June deadline applicants per 10,000 population	Asian	0.0	0.0	0.0	0.0	0.0	0.0
	Black	0.0	0.0	0.0	0.0	0.0	0.0
	Mixed	0.0	1.5	0.0	0.0	0.0	0.0
	White	6.4	7.0	6.6	6.5	7.0	6.9
	Other	0.0	0.0	0.0	0.0	0.0	0.0
All placed applicants per 10,000 population	Asian	0.0	0.0	0.0	0.0	0.0	0.0
	Black	0.0	0.0	0.0	0.0	0.0	0.0
	Mixed	0.0	1.5	0.0	0.0	1.0	0.0
	White	6.9	7.7	7.3	7.0	7.8	7.4
	Other	0.0	0.0	0.0	0.0	0.0	0.0

P.12 18 year old applications by ethnic group

Statistic	Ethnic group	2011	2012	2013	2014	2015	2016
June deadline applications	Asian	5	10	5	10	5	10
	Black	10	5	5	5	10	5
	Mixed	15	15	10	15	15	20
	White	1,570	1,665	1,645	1,700	1,785	1,765
	Other	0	5	0	5	0	5
Offers	Asian	0	5	0	5	0	5
	Black	5	5	0	0	5	0
	Mixed	5	10	10	5	5	10
	White	1,045	1,265	1,190	1,185	1,200	1,115
	Other	0	5	0	0	0	0
Offer rate	Asian	N/A	N/A	N/A	N/A	N/A	0.0%
	Black	N/A	N/A	N/A	N/A	N/A	N/A
	Mixed	0.0%	64.3%	100.0%	50.0%	29.4%	61.1%
	White	66.6%	75.9%	72.3%	69.8%	67.2%	63.1%
	Other	N/A	N/A	N/A	N/A	N/A	N/A
Average offer rate	Asian	N/A	N/A	N/A	N/A	N/A	59.3%
	Black	N/A	N/A	N/A	N/A	N/A	N/A
	Mixed	61.1%	64.4%	64.1%	64.1%	40.8%	53.1%
	White	66.2%	75.9%	72.1%	69.5%	66.8%	62.9%
	Other	N/A	N/A	N/A	N/A	N/A	N/A
Percentage point difference between offer rate and average offer rate	Asian	N/A	N/A	N/A	N/A	N/A	N/A
	Black	N/A	N/A	N/A	N/A	N/A	N/A
	Mixed	N/A	N/A	N/A	N/A	N/A	N/A
	White	0.4	0.1	0.2	0.3	0.3	0.2
	Other	N/A	N/A	N/A	N/A	N/A	N/A
Contribution of group to the average offer rate	Asian	N/A	N/A	N/A	N/A	N/A	0.098
	Black	N/A	N/A	N/A	N/A	N/A	N/A
	Mixed	0.132	0.072	0.132	0.223	0.068	0.141
	White	0.984	0.981	0.985	0.986	0.983	0.980
	Other	N/A	N/A	N/A	N/A	N/A	N/A

P.13 18 year old offer rate by ethnic group

Note: The line for a group is not plotted when that group made fewer than 10 applications in any of the years from 2011-2016.

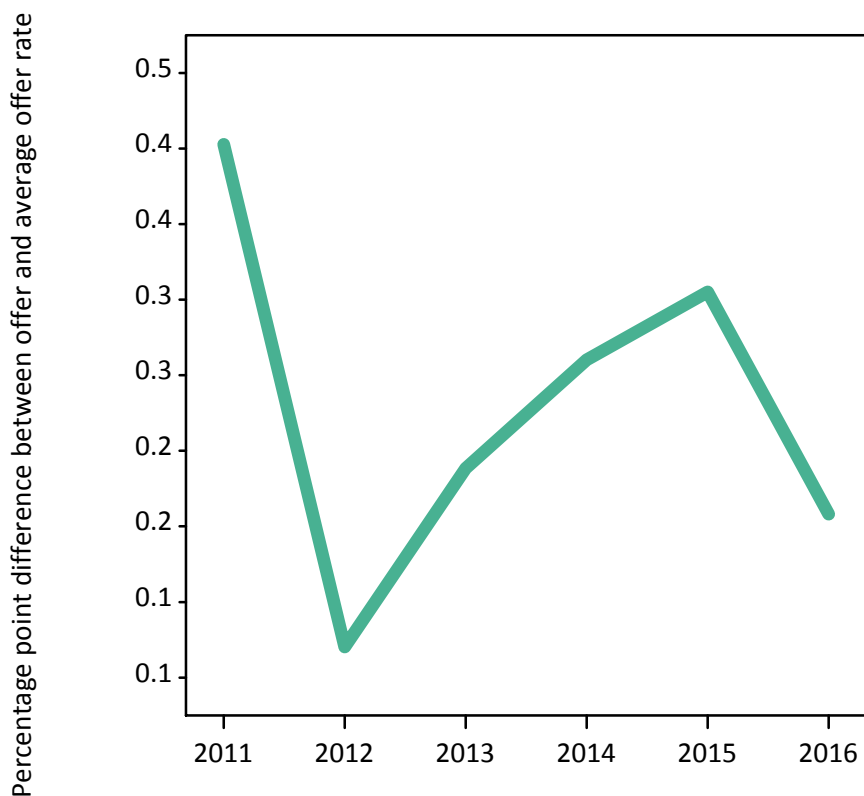
- Asian
- Black
- Mixed
- White
- Other



P.14 Percentage point difference between 18 year old offer rate and average offer rate by ethnic group

Note: The line for a group is not plotted when that group made fewer than 50 applications in any of the years from 2011-2016.

- Asian
- Black
- Mixed
- White
- Other



P.15 Applicants (all ages)

Statistic	2011	2012	2013	2014	2015	2016
June deadline applicants	1,940	1,955	1,975	2,025	2,120	2,185
Placed June deadline applicants	650	685	610	575	640	635
All placed applicants	710	770	680	640	720	690

P.16 Applications (all ages)

Statistic	2011	2012	2013	2014	2015	2016
June deadline applications	2,515	2,555	2,635	2,715	2,900	2,945
Offers	1,515	1,725	1,655	1,610	1,700	1,615
Offer rate	60.3%	67.6%	62.8%	59.3%	58.6%	54.7%

P.17 Applicants (all ages) by sex

Statistic	Sex	2011	2012	2013	2014	2015	2016
June deadline applicants	Men	835	800	820	735	780	750
	Women	1,105	1,160	1,155	1,290	1,335	1,440
Placed June deadline applicants	Men	320	315	295	260	300	280
	Women	330	365	310	320	340	355
All placed applicants	Men	345	360	330	290	330	300
	Women	365	410	345	355	390	390

P.18 Applications (all ages) by sex

Statistic	Sex	2011	2012	2013	2014	2015	2016
June deadline applications	Men	1,175	1,130	1,180	1,075	1,175	1,135
	Women	1,335	1,425	1,455	1,640	1,725	1,815
Offers	Men	745	835	825	755	795	720
	Women	770	890	830	860	905	890
Offer rate	Men	63.5%	73.9%	69.9%	70.1%	67.6%	63.6%
	Women	57.5%	62.5%	57.0%	52.3%	52.4%	49.2%

P.19 Applicants (all ages) by POLAR3 quintile

Statistic	POLAR3 quintile	2011	2012	2013	2014	2015	2016
June deadline applicants	Quintile 1	165	140	170	160	195	205
	Quintile 2	220	235	230	275	250	290
	Quintile 3	360	375	360	360	390	390
	Quintile 4	545	580	575	575	585	605
	Quintile 5	640	625	640	655	690	685
Placed June deadline applicants	Quintile 1	30	30	40	25	35	30
	Quintile 2	65	60	45	65	60	65
	Quintile 3	110	130	125	90	100	115
	Quintile 4	200	210	175	170	195	185
	Quintile 5	240	245	220	225	245	235
All placed applicants	Quintile 1	35	40	40	30	40	35
	Quintile 2	70	75	60	70	65	70
	Quintile 3	125	140	140	100	120	125
	Quintile 4	220	240	195	190	225	200
	Quintile 5	255	275	245	255	270	255

P.20 Applications (all ages) by POLAR3 quintile

Statistic	POLAR3 quintile	2011	2012	2013	2014	2015	2016
June deadline applications	Quintile 1	195	160	210	195	230	235
	Quintile 2	260	290	290	350	320	375
	Quintile 3	470	485	465	500	530	535
	Quintile 4	740	770	770	790	820	835
	Quintile 5	840	850	890	880	985	945
Offers	Quintile 1	85	70	90	75	75	90
	Quintile 2	135	160	135	180	165	165
	Quintile 3	275	340	305	280	290	300
	Quintile 4	465	535	500	485	530	465
	Quintile 5	555	625	625	595	630	585
Offer rate	Quintile 1	43.6%	43.8%	41.5%	38.1%	31.5%	38.0%
	Quintile 2	52.1%	54.7%	46.9%	50.6%	51.6%	43.2%
	Quintile 3	58.6%	70.5%	65.7%	56.0%	54.3%	56.2%
	Quintile 4	62.5%	69.1%	64.6%	61.4%	64.7%	55.8%
	Quintile 5	65.8%	73.5%	70.2%	67.5%	64.2%	62.0%

P.21 Applicants (all ages) by ethnic group

Statistic	Ethnic group	2011	2012	2013	2014	2015	2016
June deadline applicants	Asian	10	15	15	20	20	15
	Black	20	15	10	15	15	15
	Mixed	20	15	20	25	25	35
	White	1,885	1,895	1,920	1,960	2,050	2,115
	Other	5	5	5	5	0	5
Placed June deadline applicants	Asian	0	0	0	0	0	0
	Black	0	0	0	0	0	0
	Mixed	0	5	5	5	5	5
	White	645	675	600	570	635	625
	Other	0	0	0	0	0	0
All placed applicants	Asian	5	5	0	0	0	0
	Black	0	0	0	0	0	5
	Mixed	0	5	5	5	5	5
	White	700	760	670	635	710	675
	Other	0	0	0	0	0	0

P.22 Applications (all ages) by ethnic group

Statistic	Ethnic group	2011	2012	2013	2014	2015	2016
June deadline applications	Asian	10	20	15	20	20	15
	Black	20	20	10	15	20	20
	Mixed	25	20	25	25	25	40
	White	2,455	2,485	2,570	2,645	2,825	2,870
	Other	5	5	5	5	0	5
Offers	Asian	5	10	5	5	5	5
	Black	5	10	5	5	5	5
	Mixed	5	10	15	10	5	15
	White	1,495	1,690	1,625	1,590	1,675	1,580
	Other	0	5	0	0	0	5
Offer rate	Asian	N/A	55.6%	29.4%	31.8%	0.0%	0.0%
	Black	0.0%	44.4%	0.0%	0.0%	26.3%	38.9%
	Mixed	26.1%	47.6%	56.0%	38.5%	26.9%	44.7%
	White	61.0%	68.1%	63.2%	60.0%	59.3%	55.1%
	Other	N/A	N/A	N/A	N/A	N/A	N/A

Technical Notes and Definitions

UCAS undergraduate scheme

Adjustment

Adjustment allows applicants who have met and exceeded the terms of their conditional firm offer to seek and find a place at another provider whilst keeping their place at their original firm choice provider.

Clearing

Clearing is a route for applicants that are not placed and holding no offers to find a place on courses with vacancies.

Cycle year

The UCAS application cycle which runs from September to October the following year. For example the 2016 cycle runs from September 2015 through to October 2016.

End of cycle

The point in the cycle to which the numbers in this report refer, and the point at which the cycle is closed such that no more applications or offers can be made, and no more applicants can be placed. Numbers reported at the end of cycle exclude information on a small number of applicants who cancelled during the cycle.

Extra

Applicants who are unsuccessful in obtaining an offer or decline all offers may be eligible to apply through Extra, where they can apply to one further course at a time. Extra operates from 25 February until early July. It provides applicants who are eligible the possibility of obtaining an offer before exam results are published and Clearing starts.

June 30 deadline

The deadline for main scheme applications. Applicants who apply after this date will go directly into Clearing.

Record of Prior Acceptance (RPA)

RPA is an acceptance route used when a provider informs UCAS of applicants it has accepted outside of the normal application process (e.g. individuals who have applied directly to the provider).

Reporting groups

Ethnic group

High level grouping of ethnic origin as declared by the applicant: 'White', 'Black', 'Asian', 'Mixed', 'Other', 'Unknown'. Applicants who declare themselves as 'Unknown' ethnic origin are not reported in these tables, but are included in the associated csv data file.

POLAR3 quintile

Developed by HEFCE, POLAR3 classifies small areas across the UK into five groups according to their level of young participation in Higher Education. Each of these groups represents around 20 per cent of young people and is ranked from Quintile 1 (areas with the lowest young participation rates, considered as the most disadvantaged) to Quintile 5 (highest young participation rates, considered most advantaged). POLAR3 is based on the participation rates of young people between 2005 and 2009 who entered Higher Education between 2005-06 and 2010-11, therefore is most suitable for applicants aged 19 and under. These groups are assigned using the postcode declared by the applicant at the time of their application. If a UK postcode is invalid, considered unsafe for measurement or there is no link to Census geography possible then the applicant is not assigned to a quintile. Applicants with no POLAR3 quintile are not reported.

Sex

Sex as declared by the applicant.

SIMD quintile

Scottish index of multiple deprivation (SIMD) for 2012 identifies small area concentrations of multiple deprivation across all of Scotland, providing a relative measure of deprivation amongst 6505 small areas (data zones) based on 7 socio-economic domains. These small areas are classified into five groups ranked from Quintile 1 (considered the most deprived) to Quintile 5 (considered least deprived), with equal populations in each quintile. Quintiles are assigned using the postcode declared by the applicant, applicants declaring invalid postcodes are classified as 'Not assigned' and are not reported.

SIMD is only defined for applicants domiciled in Scotland, therefore any applicants domiciled outside of Scotland cannot be assigned to an SIMD quintile and so are not reported for this measure.

SIMD is only reported for providers in Scotland. Application and entry rates by SIMD are reported in the 2016 End of Cycle Report and the 2016 cycle January deadline application rate report.

Statistics reported in the tables

All placed applicants

The number of applicants placed for entry into higher education at the provider through one of their choices, including any choices made through Extra, or via Adjustment, Clearing or RPA.

All placed applicants per 10,000 population

The number of total UK domiciled 18 year old placed applicants for entry into higher education at the provider divided by the number of UK 18 year olds in the population, multiplied by 10,000. This gives the number of 18 year olds, for every 10,000 in the population, that were placed at the provider through one of their choices, including any choices made through Extra, or via Adjustment, Clearing or RPA. It is an alternative way of expressing the entry rate to a provider. By referencing the underlying population this statistic shows how the number of placed applicants is changing in relation to the available pool of potential applicants and so gives the chance that somebody from the group will be placed at a provider.

This statistic is only reported for 18 year olds.

Average offer rate

The offer rate that you might expect if the predicted grades and subject choice of applicants were the only factors that influenced whether an applicant was made an offer by the provider. The average offer rate is calculated by dividing applicants according to their specific combination of grades (for A levels the best three predicted grades are used, for BTECs, International Baccalaureate and Scottish Highers and Advanced Highers, predicted grades along with any grades already achieved upon applying are used) and subject choice. For each combination the number of main scheme offers is divided by the number of main scheme applications, to give an overall offer rate. This is then multiplied by the number of applications made by the group for which the average offer rate is being calculated (for example POLAR3 quintile 1), to give an average number of offers for that group. These average number of offers are then added together across all combinations of predicted grade and subject and divided by the number of main scheme applications from the group to give the average offer rate.

The average offer rate does not attempt to control for any other factors that may play a part in the decision to make an offer, such as the subject of the qualifications studied, their relevance to a course, or the grade in each subject; higher numbers of A levels being studied; the exact profile of grades predicted; personal statements; teacher references; interviews; or any other criteria (such as work experience or portfolios) that may be part of the admissions decision.

This statistic is only reported for 18 year olds.

Contribution of group to the average offer rate

The way in which the average offer rate is defined means that the pattern of application and offers of a group (for example POLAR3 quintile 1) will always contribute, in part, to the average offer rate for that group. When this contribution is large, the average offer rate will mainly reflect the patterns for the group, meaning that the value of the average offer rate will be similar to the offer rate, the percentage point difference statistic will be small, and any real difference between the offer rate and what might be expected given the predicted grades and subject choices of the applicants will be difficult to detect.

Values of the contribution of group to the average offer rate range between 0 and 1. The closer the value is to 1 the greater the contribution a group makes to its own average offer rate.

This statistic is only reported for 18 year olds.

Placed June deadline applicants

An applicant who has been placed for entry into higher education at the provider through a June deadline application.

Placed June deadline applicants per 10,000 population

The number of UK domiciled 18 year old placed June deadline applicants at the provider divided by the number of UK 18 year olds in the population, multiplied by 10,000. This gives the number of 18 year olds, for every 10,000 in the population, that were placed at the provider through one of their June deadline applications. It is an alternative way of expressing the entry rate to a provider, but for placed June deadline applicants only. By referencing the underlying population this statistic shows how the number of placed June deadline applicants is changing in relation to the available pool of potential 18 year old applicants and so gives the chance that somebody from the group will be placed at a provider through a June deadline application.

This statistic is only reported for 18 year olds.

June deadline applications

An application (or choice) to a course in higher education to the provider that is made by the June 30 deadline. Each applicant can make up to five choices this way. The number of June deadline applications does not include choices made through the following routes: Clearing, Extra, Adjustment and RPAs. Applications made to October deadline courses received after the October deadline are not included in these statistics.

June deadline applicants

The number of applicants that made at least one application to the provider by the June 30 deadline.

June deadline applicants per 10,000 population

The number of UK domiciled 18 year old June deadline applicants to the provider divided by the number of UK 18 year olds in the population, multiplied by 10,000. This gives the number of 18 year olds, for every 10,000 in the population, who applied by the June 30 deadline. It is equivalent to the application rate. By referencing the underlying population this statistic shows how the number of June deadline applicants is changing in relation to the available pool of potential 18 year old applicants and so gives the chance that somebody from the group will apply to a provider by the June 30 deadline.

This statistic is only reported for 18 year olds.

Offers

An offer is defined as a provider's decision in response to an application to offer a place to an applicant, often subject to the applicant satisfying academic and/or other criteria, via a June deadline application (i.e. does not cover choices made through the following routes: Clearing, Extra, Adjustment and RPAs).

Offer rate

The number of offers made divided by the number of June deadline applications. This gives the proportion of all June deadline applications to the provider that received an offer.

Percentage point difference between offer rate and average offer rate

The offer rate minus the average offer rate.

The percentage point difference can be compared to the expected range of statistical variation resulting from the calculation of the average offer rate using the Average Offer Rate Lookup Table. Where the value of the percentage point difference lies outside of this range, the percentage point difference may be considered to represent a real difference between the offer rate and the average offer rate.

Other definitions

Age

This analysis uses country-specific age definitions that align with the cut off points for school and college cohorts within the different administrations of the UK. For England and Wales, ages are defined on the 31 August, for Northern Ireland on the 1 July and for Scotland on the 28 February the following year. Defining ages in this way matches the assignment of children to school cohorts. For applicants outside of the UK a cohort cut off of 31 August has been used.

Provider

A higher education provider - a university or college.

UK domiciled

Declared area of permanent residence within England, Northern Ireland, Scotland and Wales. Applicants from the Channel Islands and Isle of Man are not included.