

E70 The University of Essex

Cycle years: 2011 - 2016

Cycle Reference Point: End of Cycle

Applicant coverage: UK domiciled

Reporting groups: Sex, POLAR3, ethnic group

Applicant statistics: June deadline applicants, placed June deadline applicants, all placed applicants, June deadline applicants per 10,000 population, placed June deadline applicants per 10,000 population, all placed applicants per 10,000 population

Application statistics: June deadline applications, offers, offer rate, average offer rate, percentage point difference between offer rate and average offer rate, contribution of group to the average offer rate

Non-disclosure controls: To avoid the disclosure of information about any individual the following measures are taken

- Applicants, placed applicants, applications and offers are rounded to the nearest 5.
- Applicants/placed applicants per 10,000 population figures are reported as 0 if the applicant/placed applicant figures are rounded to 0.
- All statistics related to the offer rate are not reported when the number of applications for a group is less than 10. The percentage point difference between the offer rate and the average offer rate is not reported when the number of applications for a group is less than 50.
- Offer rates are reported as 0% if there are fewer than 5 offers, and 100% if the number of offers is within 5 of the number of applications. When the offer rate is reported as 0% or 100%, it is reported in italics.

Contents:

18 year old applicants:	P.1
18 year old applications:	P.2
18 year old applicants by sex:	P.3
18 year old applications by sex:	P.4
18 year old applicants by POLAR3 quintile:	P.7
18 year old applications by POLAR3 quintile:	P.8
18 year old applicants by ethnic group:	P.11
18 year old applications by ethnic group:	P.12
Applicants (all ages):	P.15
Applications (all ages):	P.16
Applicants (all ages) by sex:	P.17
Applications (all ages) by sex:	P.18
Applicants (all ages) by POLAR3 quintile:	P.19
Applications (all ages) by POLAR3 quintile:	P.20
Applicants (all ages) by ethnic group:	P.21
Applications (all ages) by ethnic group:	P.22

P.1 18 year old applicants

Statistic	2011	2012	2013	2014	2015	2016
June deadline applicants	6,320	7,150	7,100	5,840	7,365	7,110
Placed June deadline applicants	920	870	920	950	1,145	1,140
All placed applicants	1,105	1,095	1,140	1,405	1,455	1,605
June deadline applicants per 10,000 population	82.1	92.5	93.3	77.6	96.1	94.8
Placed June deadline applicants per 10,000	11.9	11.3	12.1	12.6	15.0	15.2
All placed applicants per 10,000 population	14.3	14.2	15.0	18.7	19.0	21.4

P.2 18 year old applications

Statistic	2011	2012	2013	2014	2015	2016
June deadline applications	6,585	7,445	7,370	6,070	7,610	7,380
Offers	5,385	5,730	5,480	4,470	5,685	5,780
Offer rate	81.8%	77.0%	74.4%	73.6%	74.7%	78.3%

P.3 18 year old applicants by sex

Statistic	Sex	2011	2012	2013	2014	2015	2016
June deadline applicants	Men	3,190	3,355	3,255	2,705	3,570	3,390
	Women	3,130	3,800	3,845	3,140	3,795	3,720
Placed June deadline applicants	Men	475	420	435	445	565	585
	Women	445	450	490	505	585	550
All placed applicants	Men	550	535	550	685	720	825
	Women	555	560	595	720	740	780
June deadline applicants per 10,000 population	Men	81.1	84.5	83.3	69.8	91.0	88.2
	Women	83.1	100.8	103.7	85.8	101.5	101.8
Placed June deadline applicants per 10,000 population	Men	12.1	10.6	11.1	11.5	14.3	15.3
	Women	11.8	11.9	13.2	13.8	15.6	15.1
All placed applicants per 10,000 population	Men	14.0	13.5	14.1	17.7	18.3	21.5
	Women	14.7	14.9	16.0	19.7	19.7	21.3

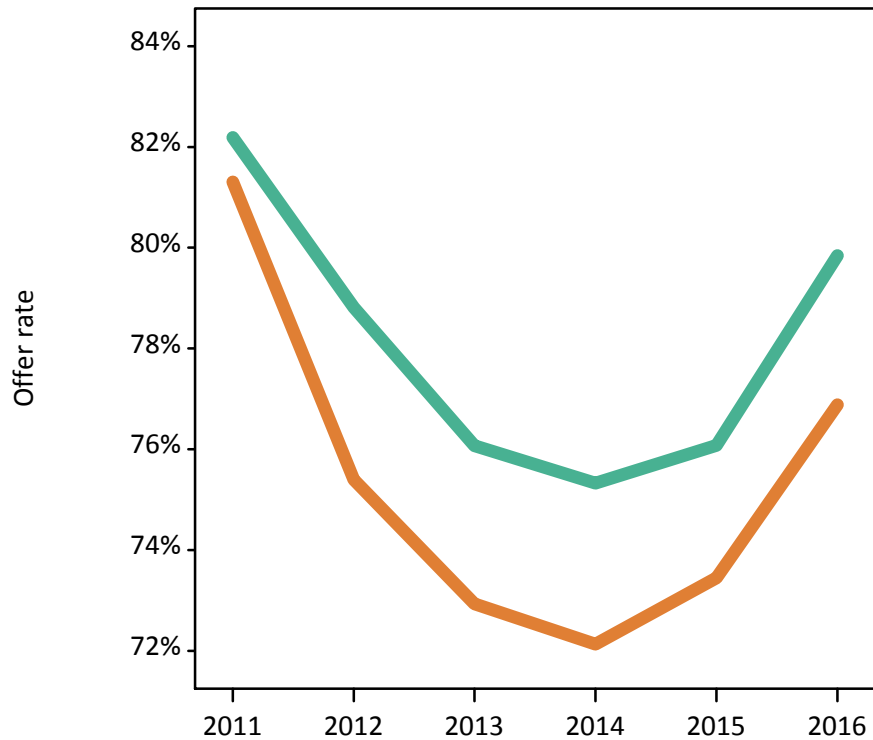
P.4 18 year old applications by sex

Statistic	Sex	2011	2012	2013	2014	2015	2016
June deadline applications	Men	3,330	3,495	3,390	2,810	3,705	3,540
	Women	3,260	3,950	3,980	3,260	3,905	3,840
Offers	Men	2,735	2,755	2,580	2,115	2,820	2,825
	Women	2,650	2,980	2,900	2,355	2,870	2,955
Offer rate	Men	82.2%	78.8%	76.1%	75.3%	76.1%	79.8%
	Women	81.3%	75.4%	72.9%	72.1%	73.4%	76.9%
Average offer rate	Men	81.8%	79.1%	76.2%	75.0%	75.9%	79.9%
	Women	81.7%	75.2%	72.8%	72.4%	73.6%	76.9%
Percentage point difference between offer rate and average offer rate	Men	0.4	-0.3	-0.2	0.3	0.2	-0.0
	Women	-0.4	0.2	0.1	-0.3	-0.2	0.0
Contribution of group to the average offer rate	Men	0.626	0.610	0.610	0.611	0.634	0.628
	Women	0.618	0.655	0.668	0.665	0.653	0.658

P.5 18 year old offer rate by sex

Note: The line for a group is not plotted when that group made fewer than 10 applications in any of the years from 2011-2016.

Men
Women



P.6 Percentage point difference between 18 year old offer rate and average offer rate by sex

Note: The line for a group is not plotted when that group made fewer than 50 applications in any of the years from 2011-2016.

Men
Women



P.7 18 year old applicants by POLAR3 quintile

Statistic	POLAR3 quintile	2011	2012	2013	2014	2015	2016
June deadline applicants	Quintile 1	700	780	785	680	895	780
	Quintile 2	985	1,190	1,190	1,015	1,205	1,180
	Quintile 3	1,365	1,525	1,630	1,355	1,795	1,640
	Quintile 4	1,510	1,735	1,710	1,385	1,760	1,775
	Quintile 5	1,740	1,910	1,770	1,405	1,695	1,695
Placed June deadline applicants	Quintile 1	90	95	105	120	130	135
	Quintile 2	155	155	160	145	180	190
	Quintile 3	190	190	220	235	300	290
	Quintile 4	245	215	225	235	290	285
	Quintile 5	240	220	210	215	250	235
All placed applicants	Quintile 1	100	110	120	160	160	170
	Quintile 2	180	185	190	200	220	250
	Quintile 3	220	250	270	360	375	420
	Quintile 4	290	270	290	345	375	395
	Quintile 5	310	280	270	340	320	365
June deadline applicants per 10,000 population	Quintile 1	48.6	54.7	56.3	48.9	64.0	57.7
	Quintile 2	65.5	79.4	80.8	69.2	81.1	81.7
	Quintile 3	88.7	98.6	107.0	90.0	117.0	109.0
	Quintile 4	96.3	109.2	109.3	89.7	112.6	115.0
	Quintile 5	105.2	113.6	107.0	86.1	101.2	102.7
Placed June deadline applicants per 10,000 population	Quintile 1	6.1	6.5	7.5	8.5	9.3	9.9
	Quintile 2	10.3	10.3	10.9	9.8	12.0	13.3
	Quintile 3	12.3	12.2	14.4	15.5	19.4	19.2
	Quintile 4	15.6	13.4	14.4	15.4	18.5	18.5
	Quintile 5	14.4	13.2	12.7	13.3	14.8	14.2
All placed applicants per 10,000 population	Quintile 1	7.0	7.7	8.6	11.4	11.3	12.5
	Quintile 2	12.0	12.5	12.8	13.7	14.9	17.4
	Quintile 3	14.2	16.1	17.8	23.9	24.5	28.0
	Quintile 4	18.5	16.9	18.7	22.4	24.1	25.6
	Quintile 5	18.7	16.7	16.2	20.8	19.1	22.1

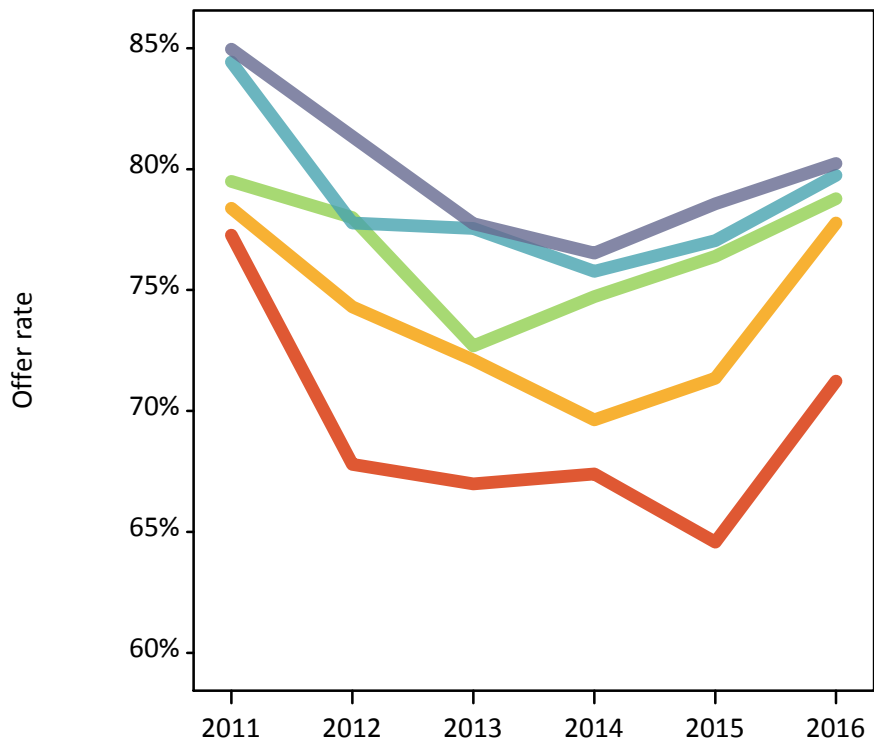
P.8 18 year old applications by POLAR3 quintile

Statistic	POLAR3 quintile	2011	2012	2013	2014	2015	2016
June deadline applications	Quintile 1	740	830	825	725	945	825
	Quintile 2	1,040	1,270	1,245	1,065	1,255	1,235
	Quintile 3	1,415	1,570	1,685	1,400	1,855	1,700
	Quintile 4	1,585	1,805	1,780	1,425	1,815	1,835
	Quintile 5	1,790	1,955	1,820	1,445	1,730	1,740
Offers	Quintile 1	570	560	550	490	610	585
	Quintile 2	815	945	895	745	895	960
	Quintile 3	1,125	1,225	1,225	1,045	1,420	1,340
	Quintile 4	1,340	1,405	1,380	1,080	1,400	1,465
	Quintile 5	1,520	1,590	1,415	1,105	1,360	1,395
Offer rate	Quintile 1	77.3%	67.8%	67.0%	67.4%	64.6%	71.2%
	Quintile 2	78.4%	74.3%	72.1%	69.6%	71.3%	77.8%
	Quintile 3	79.5%	78.0%	72.7%	74.7%	76.4%	78.8%
	Quintile 4	84.4%	77.8%	77.6%	75.8%	77.1%	79.7%
	Quintile 5	85.0%	81.3%	77.7%	76.5%	78.6%	80.2%
Average offer rate	Quintile 1	78.1%	71.3%	67.8%	70.1%	67.6%	73.5%
	Quintile 2	79.1%	74.4%	72.2%	71.9%	72.5%	78.3%
	Quintile 3	79.5%	77.2%	73.9%	73.9%	75.1%	78.5%
	Quintile 4	83.8%	77.6%	77.0%	74.8%	76.8%	79.4%
	Quintile 5	84.7%	80.6%	76.6%	75.3%	77.8%	79.4%
Percentage point difference between offer rate and average offer rate	Quintile 1	-0.9	-3.5	-0.8	-2.6	-3.0	-2.3
	Quintile 2	-0.7	-0.1	-0.1	-2.2	-1.1	-0.5
	Quintile 3	-0.0	0.8	-1.3	0.8	1.3	0.3
	Quintile 4	0.6	0.2	0.5	0.9	0.3	0.4
	Quintile 5	0.2	0.7	1.1	1.3	0.8	0.8
Contribution of group to the average offer rate	Quintile 1	0.227	0.217	0.216	0.226	0.219	0.211
	Quintile 2	0.258	0.261	0.246	0.270	0.242	0.239
	Quintile 3	0.299	0.292	0.300	0.311	0.314	0.301
	Quintile 4	0.325	0.314	0.312	0.318	0.309	0.315
	Quintile 5	0.370	0.346	0.334	0.327	0.314	0.316

P.9 18 year old offer rate by POLAR3 quintile

Note: The line for a group is not plotted when that group made fewer than 10 applications in any of the years from 2011-2016.

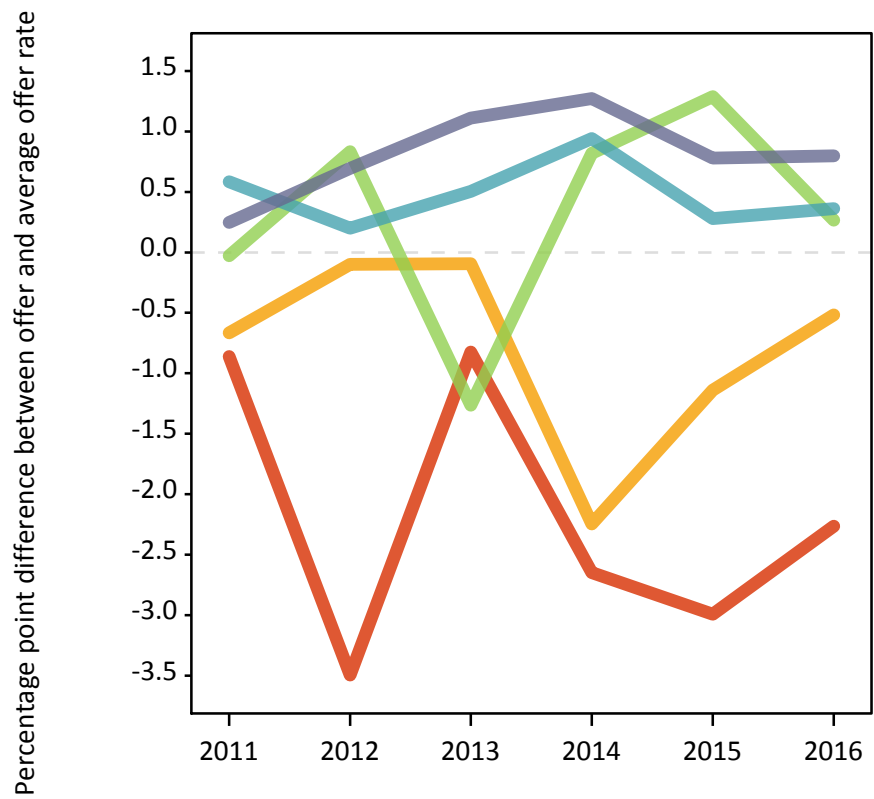
- Quintile 1
- Quintile 2
- Quintile 3
- Quintile 4
- Quintile 5



P.10 Percentage point difference between 18 year old offer rate and average offer rate by POLAR3 quintile

Note: The line for a group is not plotted when that group made fewer than 50 applications in any of the years from 2011-2016.

- Quintile 1
- Quintile 2
- Quintile 3
- Quintile 4
- Quintile 5



P.11 18 year old applicants by ethnic group

Statistic	Ethnic group	2011	2012	2013	2014	2015	2016
June deadline applicants	Asian	510	575	595	465	635	685
	Black	620	700	840	765	1,155	1,000
	Mixed	295	370	390	315	455	425
	White	4,735	5,360	5,130	4,180	4,930	4,810
	Other	115	105	110	105	150	140
Placed June deadline applicants	Asian	60	55	60	55	80	100
	Black	80	95	125	150	200	175
	Mixed	35	55	70	45	80	65
	White	730	645	645	680	755	765
	Other	10	15	15	15	25	15
All placed applicants	Asian	80	75	90	130	130	175
	Black	105	150	180	305	290	335
	Mixed	45	70	80	70	95	100
	White	855	765	765	875	905	945
	Other	15	15	20	25	30	35
June deadline applicants per 10,000 population	Asian	80.8	88.5	90.2	68.3	89.7	95.0
	Black	226.0	248.9	282.6	252.4	362.2	318.9
	Mixed	122.6	142.8	144.6	108.8	147.6	135.7
	White	73.2	83.0	81.5	67.7	79.1	79.5
	Other	139.5	118.7	122.4	111.7	154.6	139.0
Placed June deadline applicants per 10,000 population	Asian	9.2	8.8	9.2	8.4	11.6	14.0
	Black	30.0	33.0	41.4	49.8	62.8	55.6
	Mixed	13.6	21.5	25.5	16.0	25.9	21.3
	White	11.3	10.0	10.3	11.0	12.1	12.7
	Other	13.6	15.8	16.5	16.1	24.9	16.1
All placed applicants per 10,000 population	Asian	12.5	11.9	13.5	19.0	18.4	24.5
	Black	37.7	54.0	60.6	100.0	91.1	106.4
	Mixed	19.4	26.9	29.2	24.7	30.5	31.5
	White	13.2	11.8	12.2	14.2	14.5	15.6
	Other	16.0	19.2	21.0	25.8	32.2	35.3

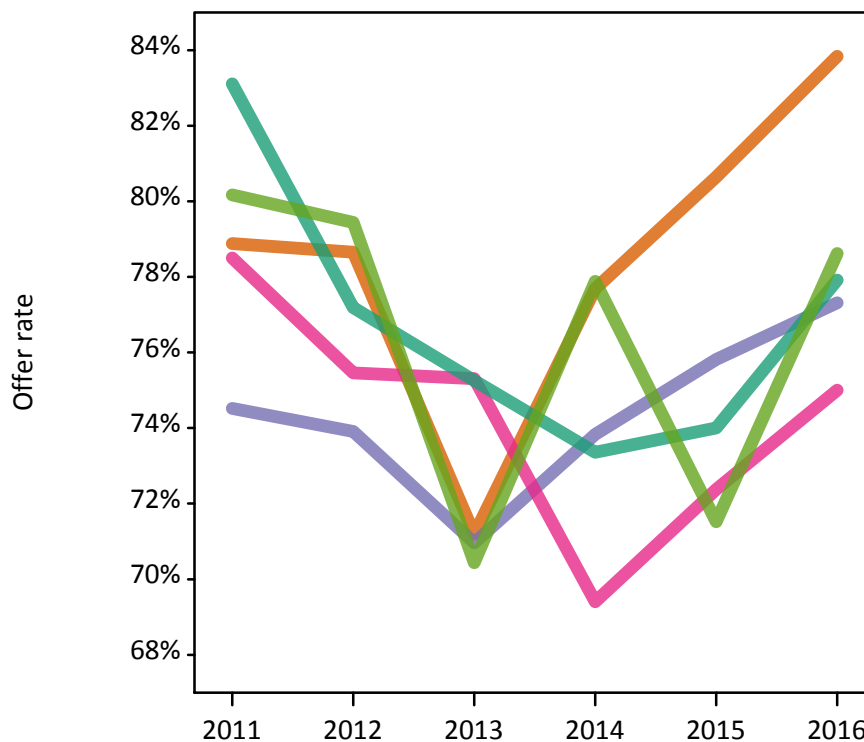
P.12 18 year old applications by ethnic group

Statistic	Ethnic group	2011	2012	2013	2014	2015	2016
June deadline applications	Asian	520	580	605	475	650	695
	Black	630	710	855	770	1,160	1,005
	Mixed	305	385	400	315	465	440
	White	4,970	5,625	5,360	4,385	5,135	5,045
	Other	115	105	115	105	150	145
Offers	Asian	410	455	430	370	525	580
	Black	470	525	605	570	880	775
	Mixed	240	290	300	220	340	330
	White	4,130	4,340	4,035	3,215	3,800	3,930
	Other	95	85	80	80	110	115
Offer rate	Asian	78.9%	78.7%	71.2%	77.7%	80.6%	83.8%
	Black	74.5%	73.9%	71.0%	73.8%	75.8%	77.3%
	Mixed	78.5%	75.5%	75.3%	69.4%	72.4%	75.0%
	White	83.1%	77.2%	75.3%	73.4%	74.0%	77.9%
	Other	80.2%	79.4%	70.4%	77.9%	71.5%	78.6%
Average offer rate	Asian	78.8%	80.8%	74.4%	79.2%	81.7%	84.4%
	Black	75.9%	74.1%	71.7%	74.3%	74.7%	78.2%
	Mixed	80.3%	76.1%	74.2%	69.8%	71.5%	77.4%
	White	82.8%	77.0%	74.8%	73.1%	74.0%	77.4%
	Other	83.4%	76.3%	72.3%	77.5%	76.8%	80.3%
Percentage point difference between offer rate and average offer rate	Asian	0.1	-2.2	-3.2	-1.5	-1.1	-0.5
	Black	-1.4	-0.2	-0.7	-0.5	1.1	-0.9
	Mixed	-1.8	-0.6	1.1	-0.4	0.8	-2.4
	White	0.3	0.2	0.4	0.3	-0.0	0.5
	Other	-3.3	3.2	-1.9	0.4	-5.3	-1.7
Contribution of group to the average offer rate	Asian	0.251	0.233	0.227	0.220	0.200	0.198
	Black	0.233	0.225	0.243	0.242	0.263	0.236
	Mixed	0.153	0.146	0.160	0.142	0.147	0.146
	White	0.799	0.797	0.779	0.771	0.728	0.737
	Other	0.181	0.115	0.150	0.147	0.115	0.137

P.13 18 year old offer rate by ethnic group

Note: The line for a group is not plotted when that group made fewer than 10 applications in any of the years from 2011-2016.

- Asian
- Black
- Mixed
- White
- Other



P.14 Percentage point difference between 18 year old offer rate and average offer rate by ethnic group

Note: The line for a group is not plotted when that group made fewer than 50 applications in any of the years from 2011-2016.

- Asian
- Black
- Mixed
- White
- Other



P.15 Applicants (all ages)

Statistic	2011	2012	2013	2014	2015	2016
June deadline applicants	11,350	11,915	12,285	10,835	13,075	12,985
Placed June deadline applicants	1,525	1,360	1,510	1,620	1,910	2,000
All placed applicants	1,925	1,835	1,995	2,510	2,695	3,010

P.16 Applications (all ages)

Statistic	2011	2012	2013	2014	2015	2016
June deadline applications	12,065	12,555	12,875	11,430	13,645	13,635
Offers	8,415	7,935	7,850	6,835	8,455	8,605
Offer rate	69.8%	63.2%	61.0%	59.8%	62.0%	63.1%

P.17 Applicants (all ages) by sex

Statistic	Sex	2011	2012	2013	2014	2015	2016
June deadline applicants	Men	5,690	5,595	5,625	4,950	6,190	6,105
	Women	5,660	6,315	6,655	5,885	6,885	6,880
Placed June deadline applicants	Men	765	645	660	760	925	1,015
	Women	765	715	850	860	985	985
All placed applicants	Men	925	870	890	1,190	1,265	1,525
	Women	995	965	1,105	1,320	1,435	1,485

P.18 Applications (all ages) by sex

Statistic	Sex	2011	2012	2013	2014	2015	2016
June deadline applications	Men	6,025	5,900	5,900	5,250	6,490	6,440
	Women	6,040	6,650	6,975	6,180	7,155	7,190
Offers	Men	4,265	3,900	3,740	3,335	4,230	4,350
	Women	4,155	4,035	4,110	3,505	4,220	4,260
Offer rate	Men	70.8%	66.0%	63.4%	63.5%	65.2%	67.5%
	Women	68.8%	60.7%	58.9%	56.7%	59.0%	59.2%

P.19 Applicants (all ages) by POLAR3 quintile

Statistic	POLAR3 quintile	2011	2012	2013	2014	2015	2016
June deadline applicants	Quintile 1	1,450	1,465	1,525	1,480	1,775	1,735
	Quintile 2	1,920	1,975	2,100	1,925	2,225	2,245
	Quintile 3	2,490	2,605	2,785	2,500	3,065	2,935
	Quintile 4	2,625	2,850	2,910	2,460	3,080	3,035
	Quintile 5	2,835	2,985	2,925	2,460	2,900	2,960
Placed June deadline applicants	Quintile 1	190	175	185	235	245	275
	Quintile 2	275	240	255	245	320	345
	Quintile 3	325	290	355	380	470	490
	Quintile 4	385	335	370	395	470	470
	Quintile 5	350	325	340	355	405	410
All placed applicants	Quintile 1	230	235	250	335	375	390
	Quintile 2	345	310	335	380	450	495
	Quintile 3	400	400	465	610	650	765
	Quintile 4	465	455	480	600	650	690
	Quintile 5	475	430	455	575	560	660

P.20 Applications (all ages) by POLAR3 quintile

Statistic	POLAR3 quintile	2011	2012	2013	2014	2015	2016
June deadline applications	Quintile 1	1,590	1,605	1,615	1,640	1,895	1,860
	Quintile 2	2,065	2,120	2,215	2,065	2,345	2,385
	Quintile 3	2,640	2,715	2,895	2,600	3,205	3,070
	Quintile 4	2,790	3,005	3,055	2,550	3,180	3,170
	Quintile 5	2,945	3,080	3,050	2,560	2,985	3,075
Offers	Quintile 1	1,000	835	835	860	1,000	970
	Quintile 2	1,330	1,285	1,270	1,155	1,360	1,460
	Quintile 3	1,775	1,695	1,730	1,575	2,030	1,965
	Quintile 4	2,060	1,960	1,980	1,625	2,050	2,125
	Quintile 5	2,230	2,140	2,015	1,620	2,000	2,045
Offer rate	Quintile 1	62.8%	52.2%	51.7%	52.3%	52.7%	52.2%
	Quintile 2	64.5%	60.7%	57.4%	55.9%	58.0%	61.1%
	Quintile 3	67.2%	62.4%	59.7%	60.5%	63.4%	64.0%
	Quintile 4	73.7%	65.3%	64.8%	63.7%	64.4%	67.1%
	Quintile 5	75.7%	69.5%	66.0%	63.2%	66.9%	66.5%

P.21 Applicants (all ages) by ethnic group

Statistic	Ethnic group	2011	2012	2013	2014	2015	2016
June deadline applicants	Asian	960	1,050	1,110	935	1,225	1,310
	Black	1,590	1,675	1,890	1,835	2,440	2,370
	Mixed	570	625	680	595	820	805
	White	7,945	8,270	8,315	7,215	8,220	8,115
	Other	190	215	200	195	275	275
Placed June deadline applicants	Asian	95	85	105	110	150	165
	Black	150	155	210	270	310	310
	Mixed	60	95	100	75	130	120
	White	1,190	990	1,050	1,135	1,260	1,350
	Other	15	25	20	30	40	35
All placed applicants	Asian	140	125	165	250	260	325
	Black	195	245	305	535	480	615
	Mixed	75	115	120	120	165	190
	White	1,390	1,200	1,295	1,480	1,610	1,710
	Other	20	45	25	50	55	75

P.22 Applications (all ages) by ethnic group

Statistic	Ethnic group	2011	2012	2013	2014	2015	2016
June deadline applications	Asian	990	1,075	1,140	965	1,265	1,335
	Black	1,630	1,710	1,930	1,885	2,485	2,430
	Mixed	605	655	705	615	855	835
	White	8,540	8,815	8,800	7,700	8,655	8,630
	Other	195	215	205	200	285	290
Offers	Asian	645	670	705	630	845	910
	Black	815	805	965	985	1,385	1,285
	Mixed	420	425	430	355	515	525
	White	6,320	5,835	5,570	4,705	5,470	5,635
	Other	135	140	125	130	170	175
Offer rate	Asian	65.2%	62.6%	61.9%	65.0%	67.0%	68.2%
	Black	50.1%	47.1%	49.9%	52.1%	55.6%	52.9%
	Mixed	69.4%	64.8%	61.1%	57.9%	60.5%	62.9%
	White	74.0%	66.2%	63.3%	61.1%	63.2%	65.3%
	Other	69.9%	65.3%	59.4%	65.3%	60.8%	60.5%

Technical Notes and Definitions

UCAS undergraduate scheme

Adjustment

Adjustment allows applicants who have met and exceeded the terms of their conditional firm offer to seek and find a place at another provider whilst keeping their place at their original firm choice provider.

Clearing

Clearing is a route for applicants that are not placed and holding no offers to find a place on courses with vacancies.

Cycle year

The UCAS application cycle which runs from September to October the following year. For example the 2016 cycle runs from September 2015 through to October 2016.

End of cycle

The point in the cycle to which the numbers in this report refer, and the point at which the cycle is closed such that no more applications or offers can be made, and no more applicants can be placed. Numbers reported at the end of cycle exclude information on a small number of applicants who cancelled during the cycle.

Extra

Applicants who are unsuccessful in obtaining an offer or decline all offers may be eligible to apply through Extra, where they can apply to one further course at a time. Extra operates from 25 February until early July. It provides applicants who are eligible the possibility of obtaining an offer before exam results are published and Clearing starts.

June 30 deadline

The deadline for main scheme applications. Applicants who apply after this date will go directly into Clearing.

Record of Prior Acceptance (RPA)

RPA is an acceptance route used when a provider informs UCAS of applicants it has accepted outside of the normal application process (e.g. individuals who have applied directly to the provider).

Reporting groups

Ethnic group

High level grouping of ethnic origin as declared by the applicant: 'White', 'Black', 'Asian', 'Mixed', 'Other', 'Unknown'. Applicants who declare themselves as 'Unknown' ethnic origin are not reported in these tables, but are included in the associated csv data file.

POLAR3 quintile

Developed by HEFCE, POLAR3 classifies small areas across the UK into five groups according to their level of young participation in Higher Education. Each of these groups represents around 20 per cent of young people and is ranked from Quintile 1 (areas with the lowest young participation rates, considered as the most disadvantaged) to Quintile 5 (highest young participation rates, considered most advantaged). POLAR3 is based on the participation rates of young people between 2005 and 2009 who entered Higher Education between 2005-06 and 2010-11, therefore is most suitable for applicants aged 19 and under. These groups are assigned using the postcode declared by the applicant at the time of their application. If a UK postcode is invalid, considered unsafe for measurement or there is no link to Census geography possible then the applicant is not assigned to a quintile. Applicants with no POLAR3 quintile are not reported.

Sex

Sex as declared by the applicant.

SIMD quintile

Scottish index of multiple deprivation (SIMD) for 2012 identifies small area concentrations of multiple deprivation across all of Scotland, providing a relative measure of deprivation amongst 6505 small areas (data zones) based on 7 socio-economic domains. These small areas are classified into five groups ranked from Quintile 1 (considered the most deprived) to Quintile 5 (considered least deprived), with equal populations in each quintile. Quintiles are assigned using the postcode declared by the applicant, applicants declaring invalid postcodes are classified as 'Not assigned' and are not reported.

SIMD is only defined for applicants domiciled in Scotland, therefore any applicants domiciled outside of Scotland cannot be assigned to an SIMD quintile and so are not reported for this measure.

SIMD is only reported for providers in Scotland. Application and entry rates by SIMD are reported in the 2016 End of Cycle Report and the 2016 cycle January deadline application rate report.

Statistics reported in the tables

All placed applicants

The number of applicants placed for entry into higher education at the provider through one of their choices, including any choices made through Extra, or via Adjustment, Clearing or RPA.

All placed applicants per 10,000 population

The number of total UK domiciled 18 year old placed applicants for entry into higher education at the provider divided by the number of UK 18 year olds in the population, multiplied by 10,000. This gives the number of 18 year olds, for every 10,000 in the population, that were placed at the provider through one of their choices, including any choices made through Extra, or via Adjustment, Clearing or RPA. It is an alternative way of expressing the entry rate to a provider. By referencing the underlying population this statistic shows how the number of placed applicants is changing in relation to the available pool of potential applicants and so gives the chance that somebody from the group will be placed at a provider.

This statistic is only reported for 18 year olds.

Average offer rate

The offer rate that you might expect if the predicted grades and subject choice of applicants were the only factors that influenced whether an applicant was made an offer by the provider. The average offer rate is calculated by dividing applicants according to their specific combination of grades (for A levels the best three predicted grades are used, for BTECs, International Baccalaureate and Scottish Highers and Advanced Highers, predicted grades along with any grades already achieved upon applying are used) and subject choice. For each combination the number of main scheme offers is divided by the number of main scheme applications, to give an overall offer rate. This is then multiplied by the number of applications made by the group for which the average offer rate is being calculated (for example POLAR3 quintile 1), to give an average number of offers for that group. These average number of offers are then added together across all combinations of predicted grade and subject and divided by the number of main scheme applications from the group to give the average offer rate.

The average offer rate does not attempt to control for any other factors that may play a part in the decision to make an offer, such as the subject of the qualifications studied, their relevance to a course, or the grade in each subject; higher numbers of A levels being studied; the exact profile of grades predicted; personal statements; teacher references; interviews; or any other criteria (such as work experience or portfolios) that may be part of the admissions decision.

This statistic is only reported for 18 year olds.

Contribution of group to the average offer rate

The way in which the average offer rate is defined means that the pattern of application and offers of a group (for example POLAR3 quintile 1) will always contribute, in part, to the average offer rate for that group. When this contribution is large, the average offer rate will mainly reflect the patterns for the group, meaning that the value of the average offer rate will be similar to the offer rate, the percentage point difference statistic will be small, and any real difference between the offer rate and what might be expected given the predicted grades and subject choices of the applicants will be difficult to detect.

Values of the contribution of group to the average offer rate range between 0 and 1. The closer the value is to 1 the greater the contribution a group makes to its own average offer rate.

This statistic is only reported for 18 year olds.

Placed June deadline applicants

An applicant who has been placed for entry into higher education at the provider through a June deadline application.

Placed June deadline applicants per 10,000 population

The number of UK domiciled 18 year old placed June deadline applicants at the provider divided by the number of UK 18 year olds in the population, multiplied by 10,000. This gives the number of 18 year olds, for every 10,000 in the population, that were placed at the provider through one of their June deadline applications. It is an alternative way of expressing the entry rate to a provider, but for placed June deadline applicants only. By referencing the underlying population this statistic shows how the number of placed June deadline applicants is changing in relation to the available pool of potential 18 year old applicants and so gives the chance that somebody from the group will be placed at a provider through a June deadline application.

This statistic is only reported for 18 year olds.

June deadline applications

An application (or choice) to a course in higher education to the provider that is made by the June 30 deadline. Each applicant can make up to five choices this way. The number of June deadline applications does not include choices made through the following routes: Clearing, Extra, Adjustment and RPAs. Applications made to October deadline courses received after the October deadline are not included in these statistics.

June deadline applicants

The number of applicants that made at least one application to the provider by the June 30 deadline.

June deadline applicants per 10,000 population

The number of UK domiciled 18 year old June deadline applicants to the provider divided by the number of UK 18 year olds in the population, multiplied by 10,000. This gives the number of 18 year olds, for every 10,000 in the population, who applied by the June 30 deadline. It is equivalent to the application rate. By referencing the underlying population this statistic shows how the number of June deadline applicants is changing in relation to the available pool of potential 18 year old applicants and so gives the chance that somebody from the group will apply to a provider by the June 30 deadline.

This statistic is only reported for 18 year olds.

Offers

An offer is defined as a provider's decision in response to an application to offer a place to an applicant, often subject to the applicant satisfying academic and/or other criteria, via a June deadline application (i.e. does not cover choices made through the following routes: Clearing, Extra, Adjustment and RPAs).

Offer rate

The number of offers made divided by the number of June deadline applications. This gives the proportion of all June deadline applications to the provider that received an offer.

Percentage point difference between offer rate and average offer rate

The offer rate minus the average offer rate.

The percentage point difference can be compared to the expected range of statistical variation resulting from the calculation of the average offer rate using the Average Offer Rate Lookup Table. Where the value of the percentage point difference lies outside of this range, the percentage point difference may be considered to represent a real difference between the offer rate and the average offer rate.

Other definitions

Age

This analysis uses country-specific age definitions that align with the cut off points for school and college cohorts within the different administrations of the UK. For England and Wales, ages are defined on the 31 August, for Northern Ireland on the 1 July and for Scotland on the 28 February the following year. Defining ages in this way matches the assignment of children to school cohorts. For applicants outside of the UK a cohort cut off of 31 August has been used.

Provider

A higher education provider - a university or college.

UK domiciled

Declared area of permanent residence within England, Northern Ireland, Scotland and Wales. Applicants from the Channel Islands and Isle of Man are not included.