

E14 University of East Anglia (UEA)

Cycle years: 2011 - 2016

Cycle Reference Point: End of Cycle

Applicant coverage: UK domiciled

Reporting groups: Sex, POLAR3, ethnic group

Applicant statistics: June deadline applicants, placed June deadline applicants, all placed applicants, June deadline applicants per 10,000 population, placed June deadline applicants per 10,000 population, all placed applicants per 10,000 population

Application statistics: June deadline applications, offers, offer rate, average offer rate, percentage point difference between offer rate and average offer rate, contribution of group to the average offer rate

Non-disclosure controls: To avoid the disclosure of information about any individual the following measures are taken

- Applicants, placed applicants, applications and offers are rounded to the nearest 5.
- Applicants/placed applicants per 10,000 population figures are reported as 0 if the applicant/placed applicant figures are rounded to 0.
- All statistics related to the offer rate are not reported when the number of applications for a group is less than 10. The percentage point difference between the offer rate and the average offer rate is not reported when the number of applications for a group is less than 50.
- Offer rates are reported as 0% if there are fewer than 5 offers, and 100% if the number of offers is within 5 of the number of applications. When the offer rate is reported as 0% or 100%, it is reported in italics.

Contents:

18 year old applicants:	P.1
18 year old applications:	P.2
18 year old applicants by sex:	P.3
18 year old applications by sex:	P.4
18 year old applicants by POLAR3 quintile:	P.7
18 year old applications by POLAR3 quintile:	P.8
18 year old applicants by ethnic group:	P.11
18 year old applications by ethnic group:	P.12
Applicants (all ages):	P.15
Applications (all ages):	P.16
Applicants (all ages) by sex:	P.17
Applications (all ages) by sex:	P.18
Applicants (all ages) by POLAR3 quintile:	P.19
Applications (all ages) by POLAR3 quintile:	P.20
Applicants (all ages) by ethnic group:	P.21
Applications (all ages) by ethnic group:	P.22

P.1 18 year old applicants

Statistic	2011	2012	2013	2014	2015	2016
June deadline applicants	12,530	10,770	8,610	9,435	11,460	11,840
Placed June deadline applicants	1,560	1,755	1,470	1,265	2,030	2,045
All placed applicants	1,680	1,910	1,605	1,385	2,105	2,295
June deadline applicants per 10,000 population	162.7	139.3	113.1	125.3	149.6	158.0
Placed June deadline applicants per 10,000	20.2	22.7	19.3	16.8	26.5	27.3
All placed applicants per 10,000 population	21.8	24.7	21.1	18.4	27.5	30.6

P.2 18 year old applications

Statistic	2011	2012	2013	2014	2015	2016
June deadline applications	13,100	11,220	8,920	9,810	11,910	12,290
Offers	8,900	8,020	6,840	7,725	9,575	9,815
Offer rate	67.9%	71.5%	76.7%	78.7%	80.4%	79.9%

P.3 18 year old applicants by sex

Statistic	Sex	2011	2012	2013	2014	2015	2016
June deadline applicants	Men	5,505	4,470	3,610	3,995	4,955	4,790
	Women	7,020	6,300	5,000	5,440	6,505	7,050
Placed June deadline applicants	Men	705	710	605	510	825	830
	Women	855	1,040	865	755	1,205	1,210
All placed applicants	Men	760	790	670	545	840	950
	Women	920	1,120	935	840	1,260	1,345
June deadline applicants per 10,000 population	Men	139.9	112.7	92.4	103.2	126.3	124.7
	Women	186.5	167.2	135.0	148.6	174.1	193.0
Placed June deadline applicants per 10,000 population	Men	17.9	17.9	15.5	13.2	21.0	21.7
	Women	22.7	27.6	23.3	20.7	32.3	33.1
All placed applicants per 10,000 population	Men	19.3	19.9	17.2	14.1	21.5	24.8
	Women	24.5	29.7	25.3	22.9	33.8	36.8

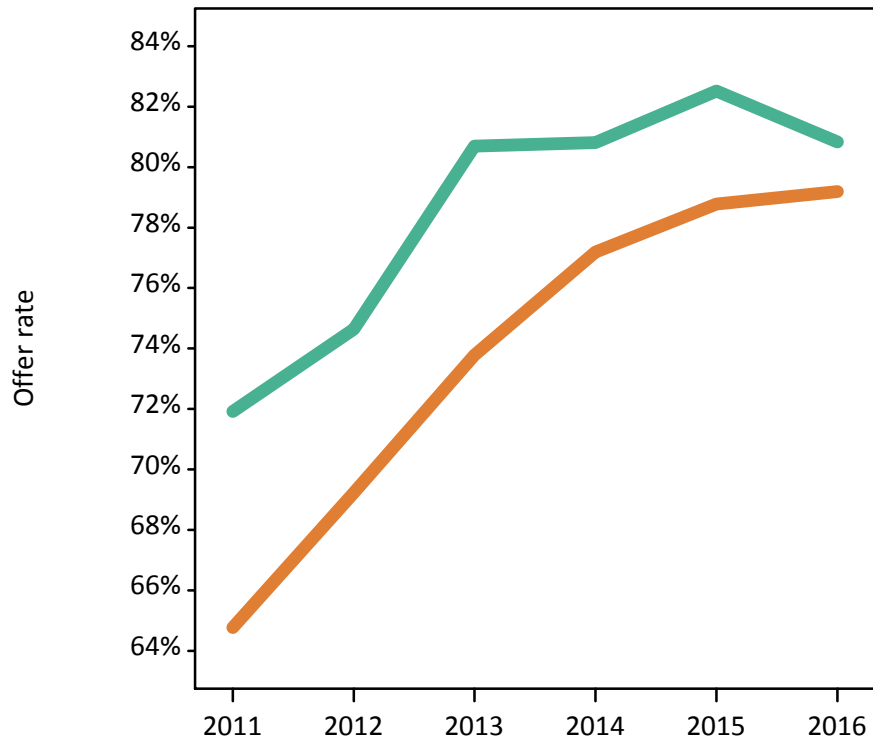
P.4 18 year old applications by sex

Statistic	Sex	2011	2012	2013	2014	2015	2016
June deadline applications	Men	5,780	4,695	3,745	4,180	5,175	5,000
	Women	7,320	6,520	5,175	5,630	6,735	7,285
Offers	Men	4,155	3,505	3,025	3,375	4,270	4,045
	Women	4,740	4,515	3,820	4,345	5,305	5,770
Offer rate	Men	71.9%	74.6%	80.7%	80.8%	82.5%	80.8%
	Women	64.8%	69.2%	73.8%	77.2%	78.8%	79.2%
Average offer rate	Men	72.1%	75.2%	81.4%	81.3%	82.8%	81.4%
	Women	64.6%	68.8%	73.3%	76.9%	78.5%	78.8%
Percentage point difference between offer rate and average offer rate	Men	-0.2	-0.5	-0.7	-0.5	-0.3	-0.6
	Women	0.2	0.4	0.5	0.3	0.3	0.4
Contribution of group to the average offer rate	Men	0.563	0.565	0.568	0.572	0.578	0.562
	Women	0.655	0.687	0.687	0.683	0.675	0.700

P.5 18 year old offer rate by sex

Note: The line for a group is not plotted when that group made fewer than 10 applications in any of the years from 2011-2016.

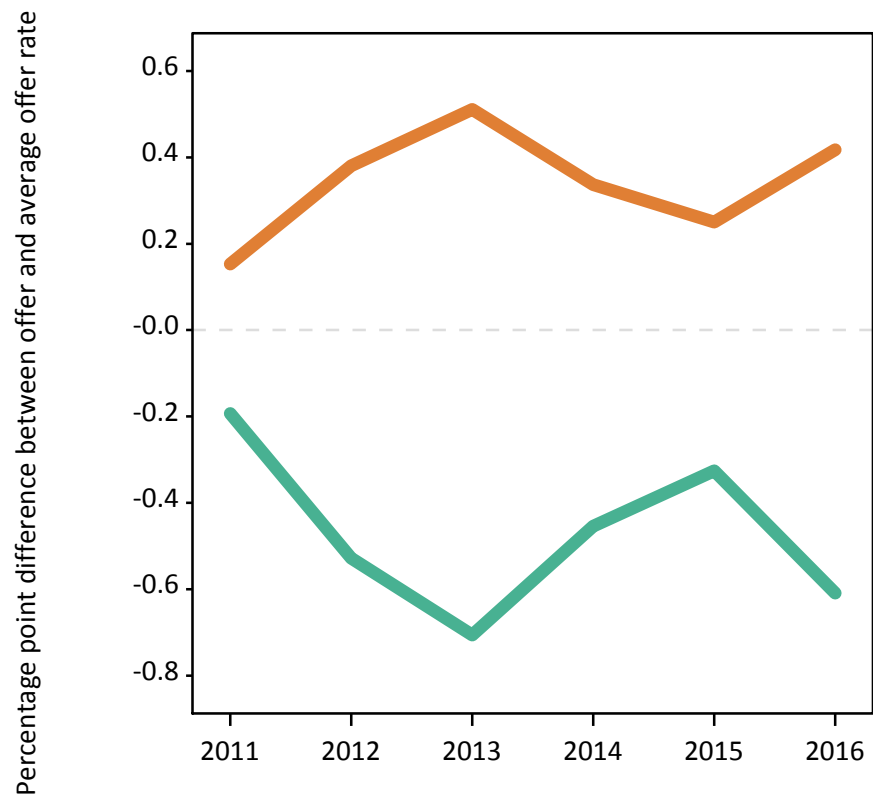
Men
Women



P.6 Percentage point difference between 18 year old offer rate and average offer rate by sex

Note: The line for a group is not plotted when that group made fewer than 50 applications in any of the years from 2011-2016.

Men
Women



P.7 18 year old applicants by POLAR3 quintile

Statistic	POLAR3 quintile	2011	2012	2013	2014	2015	2016
June deadline applicants	Quintile 1	950	770	705	760	985	1,055
	Quintile 2	1,705	1,485	1,255	1,375	1,635	1,730
	Quintile 3	2,260	2,000	1,700	1,770	2,265	2,290
	Quintile 4	3,270	2,790	2,210	2,370	2,850	3,090
	Quintile 5	4,320	3,710	2,735	3,140	3,695	3,635
Placed June deadline applicants	Quintile 1	105	105	115	120	185	180
	Quintile 2	225	260	220	195	320	295
	Quintile 3	275	325	295	225	380	410
	Quintile 4	425	485	390	360	500	555
	Quintile 5	525	570	445	360	645	585
All placed applicants	Quintile 1	115	125	120	130	190	200
	Quintile 2	235	290	245	215	335	320
	Quintile 3	300	340	325	255	390	465
	Quintile 4	450	530	425	390	520	620
	Quintile 5	575	620	490	390	660	680
June deadline applicants per 10,000 population	Quintile 1	66.2	54.2	50.4	54.5	70.3	78.1
	Quintile 2	113.3	99.1	85.1	93.8	110.1	119.7
	Quintile 3	146.7	129.5	111.4	117.5	147.4	152.3
	Quintile 4	208.7	175.7	141.4	153.9	182.2	200.2
	Quintile 5	261.1	220.7	165.3	192.5	220.8	220.0
Placed June deadline applicants per 10,000 population	Quintile 1	7.2	7.5	8.2	8.7	13.2	13.5
	Quintile 2	15.0	17.5	15.0	13.5	21.4	20.5
	Quintile 3	18.0	20.9	19.4	14.9	24.7	27.4
	Quintile 4	27.1	30.6	25.0	23.5	31.9	36.0
	Quintile 5	31.7	34.0	27.0	22.0	38.5	35.5
All placed applicants per 10,000 population	Quintile 1	8.0	8.6	8.8	9.3	13.6	15.0
	Quintile 2	15.6	19.4	16.6	14.7	22.5	22.1
	Quintile 3	19.5	22.0	21.4	16.8	25.4	31.0
	Quintile 4	28.7	33.3	27.0	25.4	33.3	40.2
	Quintile 5	34.9	37.0	29.6	24.0	39.5	41.1

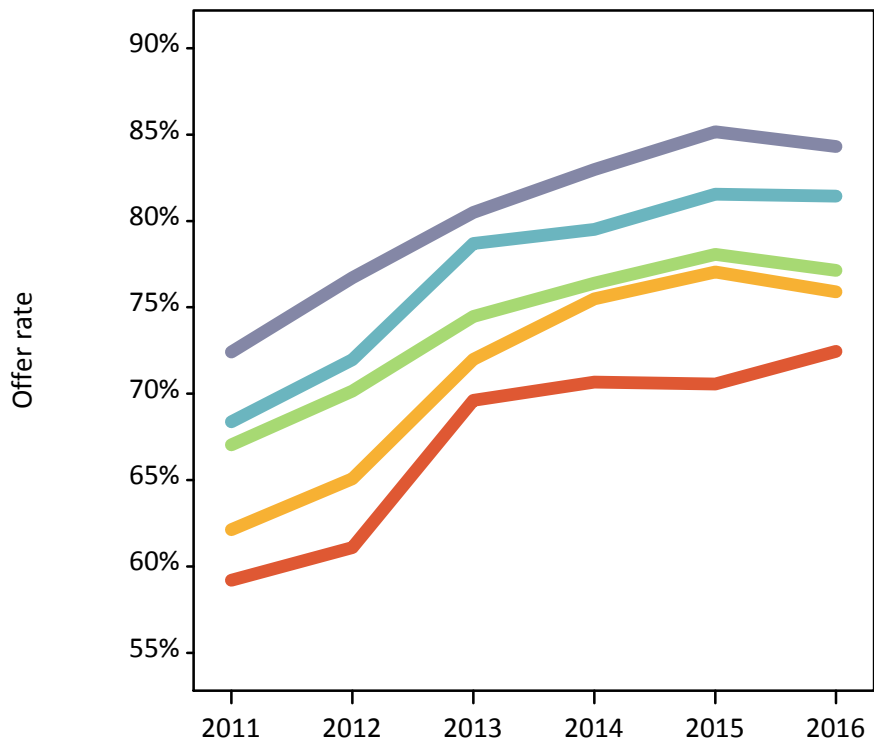
P.8 18 year old applications by POLAR3 quintile

Statistic	POLAR3 quintile	2011	2012	2013	2014	2015	2016
June deadline applications	Quintile 1	1,015	820	735	800	1,045	1,100
	Quintile 2	1,825	1,565	1,325	1,450	1,710	1,805
	Quintile 3	2,365	2,085	1,770	1,840	2,355	2,400
	Quintile 4	3,405	2,900	2,280	2,465	2,965	3,210
	Quintile 5	4,465	3,825	2,805	3,230	3,805	3,725
Offers	Quintile 1	600	500	510	565	735	795
	Quintile 2	1,135	1,020	955	1,095	1,320	1,370
	Quintile 3	1,585	1,465	1,320	1,405	1,835	1,855
	Quintile 4	2,330	2,085	1,795	1,960	2,420	2,615
	Quintile 5	3,230	2,935	2,255	2,680	3,240	3,140
Offer rate	Quintile 1	59.2%	61.1%	69.6%	70.7%	70.6%	72.5%
	Quintile 2	62.1%	65.1%	72.0%	75.5%	77.0%	75.9%
	Quintile 3	67.0%	70.1%	74.5%	76.4%	78.1%	77.1%
	Quintile 4	68.4%	72.0%	78.7%	79.5%	81.6%	81.4%
	Quintile 5	72.4%	76.7%	80.5%	83.0%	85.2%	84.3%
Average offer rate	Quintile 1	60.2%	63.8%	70.3%	71.5%	73.5%	74.8%
	Quintile 2	63.4%	65.0%	73.9%	75.7%	77.3%	76.6%
	Quintile 3	67.0%	70.4%	74.6%	77.1%	78.4%	77.2%
	Quintile 4	68.4%	71.8%	78.5%	79.4%	81.2%	81.0%
	Quintile 5	71.6%	76.2%	79.5%	82.4%	84.3%	83.6%
Percentage point difference between offer rate and average offer rate	Quintile 1	-1.0	-2.7	-0.7	-0.8	-2.9	-2.4
	Quintile 2	-1.3	0.1	-1.9	-0.2	-0.2	-0.7
	Quintile 3	0.0	-0.2	-0.1	-0.7	-0.4	-0.1
	Quintile 4	-0.1	0.2	0.2	0.1	0.3	0.4
	Quintile 5	0.8	0.5	1.0	0.6	0.9	0.7
Contribution of group to the average offer rate	Quintile 1	0.173	0.169	0.189	0.178	0.181	0.173
	Quintile 2	0.213	0.218	0.243	0.239	0.214	0.222
	Quintile 3	0.236	0.250	0.271	0.262	0.257	0.259
	Quintile 4	0.310	0.313	0.321	0.316	0.299	0.316
	Quintile 5	0.400	0.402	0.390	0.402	0.386	0.375

P.9 18 year old offer rate by POLAR3 quintile

Note: The line for a group is not plotted when that group made fewer than 10 applications in any of the years from 2011-2016.

- Quintile 1
- Quintile 2
- Quintile 3
- Quintile 4
- Quintile 5



P.10 Percentage point difference between 18 year old offer rate and average offer rate by POLAR3 quintile

Note: The line for a group is not plotted when that group made fewer than 50 applications in any of the years from 2011-2016.

- Quintile 1
- Quintile 2
- Quintile 3
- Quintile 4
- Quintile 5



P.11 18 year old applicants by ethnic group

Statistic	Ethnic group	2011	2012	2013	2014	2015	2016
June deadline applicants	Asian	910	805	720	800	1,070	1,065
	Black	580	525	455	545	740	755
	Mixed	485	430	335	400	485	585
	White	10,390	8,850	6,960	7,510	8,955	9,200
	Other	105	100	95	130	150	160
Placed June deadline applicants	Asian	60	85	65	70	85	100
	Black	60	50	50	45	70	75
	Mixed	55	65	40	45	90	90
	White	1,370	1,540	1,300	1,095	1,760	1,755
	Other	5	10	5	10	15	15
All placed applicants	Asian	85	100	90	90	95	135
	Black	75	65	65	60	85	95
	Mixed	60	70	55	45	90	100
	White	1,445	1,650	1,385	1,170	1,805	1,930
	Other	5	15	5	10	15	20
June deadline applicants per 10,000 population	Asian	144.2	124.5	109.2	118.1	150.9	148.3
	Black	212.5	186.4	153.3	179.5	233.1	241.0
	Mixed	199.4	164.3	123.5	139.0	156.6	185.3
	White	160.5	137.1	110.6	121.7	143.7	152.1
	Other	128.4	115.3	105.9	138.6	153.5	163.2
Placed June deadline applicants per 10,000 population	Asian	9.7	12.8	10.0	10.5	11.9	13.8
	Black	21.9	17.4	17.5	14.8	22.0	23.3
	Mixed	22.3	24.2	15.5	14.9	28.9	28.9
	White	21.1	23.8	20.7	17.7	28.2	29.0
	Other	4.9	11.3	5.5	10.7	17.6	13.1
All placed applicants per 10,000 population	Asian	13.6	15.4	13.8	13.0	13.6	18.6
	Black	26.7	23.1	22.2	20.5	26.7	29.7
	Mixed	24.4	26.1	19.6	16.3	29.8	32.4
	White	22.3	25.6	22.0	19.0	28.9	31.9
	Other	6.2	14.7	7.7	11.8	17.6	22.2

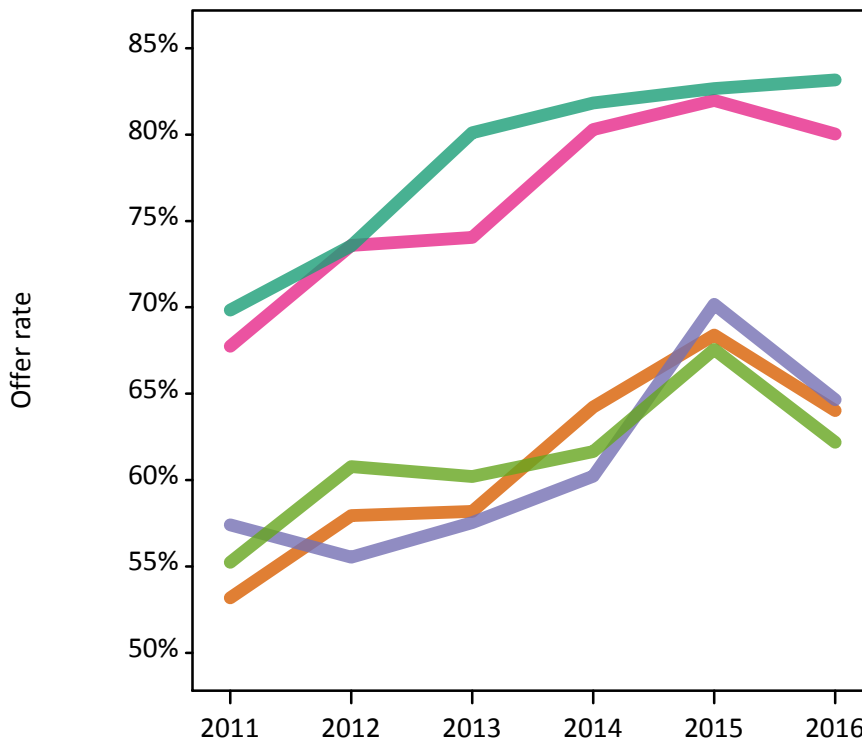
P.12 18 year old applications by ethnic group

Statistic	Ethnic group	2011	2012	2013	2014	2015	2016
June deadline applications	Asian	925	830	725	810	1,075	1,080
	Black	585	535	465	560	750	760
	Mixed	495	445	340	405	495	600
	White	10,920	9,250	7,250	7,850	9,375	9,600
	Other	105	100	100	135	150	165
Offers	Asian	495	480	425	520	735	690
	Black	335	295	265	335	525	490
	Mixed	335	325	250	325	405	480
	White	7,625	6,805	5,810	6,425	7,750	7,985
	Other	60	60	60	80	100	100
Offer rate	Asian	53.2%	58.0%	58.2%	64.2%	68.4%	64.0%
	Black	57.4%	55.5%	57.5%	60.2%	70.2%	64.7%
	Mixed	67.7%	73.6%	74.0%	80.3%	82.0%	80.0%
	White	69.8%	73.6%	80.1%	81.8%	82.7%	83.2%
	Other	55.2%	60.8%	60.2%	61.7%	67.6%	62.2%
Average offer rate	Asian	56.8%	61.2%	60.0%	66.4%	70.7%	67.0%
	Black	58.3%	59.2%	60.4%	63.1%	72.9%	67.8%
	Mixed	68.4%	73.3%	75.4%	78.8%	81.0%	81.1%
	White	69.4%	73.1%	79.7%	81.4%	82.2%	82.4%
	Other	61.7%	63.7%	62.2%	66.2%	70.5%	66.4%
Percentage point difference between offer rate and average offer rate	Asian	-3.7	-3.3	-1.8	-2.2	-2.3	-3.0
	Black	-0.9	-3.7	-2.9	-2.9	-2.7	-3.2
	Mixed	-0.7	0.3	-1.3	1.5	1.0	-1.0
	White	0.4	0.5	0.5	0.5	0.4	0.7
	Other	-6.5	-2.9	-2.0	-4.6	-2.9	-4.2
Contribution of group to the average offer rate	Asian	0.233	0.226	0.262	0.247	0.232	0.227
	Black	0.168	0.166	0.190	0.210	0.171	0.163
	Mixed	0.115	0.117	0.128	0.148	0.115	0.126
	White	0.867	0.857	0.859	0.848	0.825	0.823
	Other	0.089	0.097	0.146	0.105	0.084	0.087

P.13 18 year old offer rate by ethnic group

Note: The line for a group is not plotted when that group made fewer than 10 applications in any of the years from 2011-2016.

- Asian
- Black
- Mixed
- White
- Other



P.14 Percentage point difference between 18 year old offer rate and average offer rate by ethnic group

Note: The line for a group is not plotted when that group made fewer than 50 applications in any of the years from 2011-2016.

- Asian
- Black
- Mixed
- White
- Other



P.15 Applicants (all ages)

Statistic	2011	2012	2013	2014	2015	2016
June deadline applicants	19,475	16,200	13,780	15,200	17,840	18,330
Placed June deadline applicants	2,490	2,560	2,380	2,260	3,145	3,170
All placed applicants	2,735	2,875	2,645	2,545	3,355	3,610

P.16 Applications (all ages)

Statistic	2011	2012	2013	2014	2015	2016
June deadline applications	20,745	17,105	14,530	16,140	18,810	19,275
Offers	11,945	10,455	9,500	10,870	13,220	13,600
Offer rate	57.6%	61.1%	65.4%	67.3%	70.3%	70.6%

P.17 Applicants (all ages) by sex

Statistic	Sex	2011	2012	2013	2014	2015	2016
June deadline applicants	Men	8,570	6,715	5,745	6,435	7,730	7,590
	Women	10,905	9,485	8,035	8,770	10,110	10,740
Placed June deadline applicants	Men	1,130	1,040	955	895	1,275	1,315
	Women	1,360	1,520	1,425	1,365	1,870	1,860
All placed applicants	Men	1,230	1,165	1,070	975	1,345	1,515
	Women	1,500	1,710	1,575	1,570	2,010	2,095

P.18 Applications (all ages) by sex

Statistic	Sex	2011	2012	2013	2014	2015	2016
June deadline applications	Men	9,115	7,115	6,055	6,805	8,160	8,020
	Women	11,630	9,990	8,470	9,335	10,645	11,255
Offers	Men	5,690	4,680	4,240	4,790	5,980	5,830
	Women	6,255	5,775	5,260	6,080	7,240	7,770
Offer rate	Men	62.5%	65.8%	70.0%	70.4%	73.3%	72.7%
	Women	53.8%	57.8%	62.1%	65.1%	68.0%	69.0%

P.19 Applicants (all ages) by POLAR3 quintile

Statistic	POLAR3 quintile	2011	2012	2013	2014	2015	2016
June deadline applicants	Quintile 1	1,880	1,545	1,420	1,550	1,870	1,970
	Quintile 2	2,865	2,420	2,155	2,350	2,720	2,880
	Quintile 3	3,575	3,020	2,740	2,955	3,440	3,540
	Quintile 4	4,870	3,980	3,390	3,680	4,335	4,590
	Quintile 5	6,235	5,205	4,055	4,620	5,410	5,290
Placed June deadline applicants	Quintile 1	245	225	250	280	365	360
	Quintile 2	390	405	395	390	515	520
	Quintile 3	435	465	450	405	570	615
	Quintile 4	620	675	610	595	740	825
	Quintile 5	795	790	680	575	945	845
All placed applicants	Quintile 1	280	265	285	320	395	405
	Quintile 2	420	470	445	445	555	565
	Quintile 3	475	510	495	465	610	715
	Quintile 4	680	750	665	670	795	940
	Quintile 5	875	875	750	645	990	980

P.20 Applications (all ages) by POLAR3 quintile

Statistic	POLAR3 quintile	2011	2012	2013	2014	2015	2016
June deadline applications	Quintile 1	2,100	1,695	1,555	1,725	2,080	2,160
	Quintile 2	3,165	2,605	2,295	2,560	2,905	3,060
	Quintile 3	3,785	3,170	2,890	3,140	3,595	3,735
	Quintile 4	5,135	4,190	3,555	3,885	4,550	4,790
	Quintile 5	6,515	5,405	4,215	4,790	5,615	5,465
Offers	Quintile 1	955	770	815	990	1,200	1,295
	Quintile 2	1,605	1,375	1,390	1,585	1,915	2,005
	Quintile 3	2,105	1,880	1,800	2,035	2,465	2,555
	Quintile 4	3,055	2,660	2,450	2,690	3,290	3,530
	Quintile 5	4,200	3,750	3,035	3,540	4,310	4,170
Offer rate	Quintile 1	45.5%	45.5%	52.4%	57.4%	57.8%	60.0%
	Quintile 2	50.7%	52.8%	60.5%	62.0%	65.9%	65.6%
	Quintile 3	55.6%	59.3%	62.3%	64.7%	68.6%	68.4%
	Quintile 4	59.5%	63.4%	68.9%	69.3%	72.4%	73.7%
	Quintile 5	64.5%	69.4%	72.0%	73.9%	76.8%	76.3%

P.21 Applicants (all ages) by ethnic group

Statistic	Ethnic group	2011	2012	2013	2014	2015	2016
June deadline applicants	Asian	1,685	1,395	1,300	1,490	1,835	1,865
	Black	1,255	1,085	985	1,165	1,450	1,495
	Mixed	740	650	545	655	795	905
	White	15,440	12,735	10,670	11,565	13,345	13,630
	Other	190	205	180	205	270	295
Placed June deadline applicants	Asian	105	140	125	120	145	185
	Black	90	80	85	100	115	140
	Mixed	80	90	75	80	140	140
	White	2,185	2,210	2,075	1,930	2,700	2,645
	Other	5	20	10	15	30	35
All placed applicants	Asian	145	170	160	155	165	245
	Black	110	105	110	135	145	190
	Mixed	90	100	90	90	145	160
	White	2,325	2,425	2,245	2,120	2,840	2,935
	Other	20	25	15	20	30	50

P.22 Applications (all ages) by ethnic group

Statistic	Ethnic group	2011	2012	2013	2014	2015	2016
June deadline applications	Asian	1,725	1,430	1,320	1,530	1,855	1,900
	Black	1,305	1,120	1,020	1,205	1,485	1,520
	Mixed	765	675	565	680	825	940
	White	16,565	13,535	11,330	12,395	14,220	14,455
	Other	195	210	185	215	275	305
Offers	Asian	745	715	670	785	1,105	1,080
	Black	485	445	410	550	785	770
	Mixed	455	435	360	480	585	675
	White	10,080	8,680	7,910	8,870	10,480	10,805
	Other	85	100	95	115	160	170
Offer rate	Asian	43.0%	49.8%	50.6%	51.4%	59.7%	56.9%
	Black	37.0%	39.8%	40.2%	45.8%	53.0%	50.8%
	Mixed	59.7%	64.5%	64.0%	70.7%	71.2%	71.6%
	White	60.9%	64.1%	69.8%	71.5%	73.7%	74.7%
	Other	44.6%	46.9%	50.5%	53.5%	59.1%	56.6%

Technical Notes and Definitions

UCAS undergraduate scheme

Adjustment

Adjustment allows applicants who have met and exceeded the terms of their conditional firm offer to seek and find a place at another provider whilst keeping their place at their original firm choice provider.

Clearing

Clearing is a route for applicants that are not placed and holding no offers to find a place on courses with vacancies.

Cycle year

The UCAS application cycle which runs from September to October the following year. For example the 2016 cycle runs from September 2015 through to October 2016.

End of cycle

The point in the cycle to which the numbers in this report refer, and the point at which the cycle is closed such that no more applications or offers can be made, and no more applicants can be placed. Numbers reported at the end of cycle exclude information on a small number of applicants who cancelled during the cycle.

Extra

Applicants who are unsuccessful in obtaining an offer or decline all offers may be eligible to apply through Extra, where they can apply to one further course at a time. Extra operates from 25 February until early July. It provides applicants who are eligible the possibility of obtaining an offer before exam results are published and Clearing starts.

June 30 deadline

The deadline for main scheme applications. Applicants who apply after this date will go directly into Clearing.

Record of Prior Acceptance (RPA)

RPA is an acceptance route used when a provider informs UCAS of applicants it has accepted outside of the normal application process (e.g. individuals who have applied directly to the provider).

Reporting groups

Ethnic group

High level grouping of ethnic origin as declared by the applicant: 'White', 'Black', 'Asian', 'Mixed', 'Other', 'Unknown'. Applicants who declare themselves as 'Unknown' ethnic origin are not reported in these tables, but are included in the associated csv data file.

POLAR3 quintile

Developed by HEFCE, POLAR3 classifies small areas across the UK into five groups according to their level of young participation in Higher Education. Each of these groups represents around 20 per cent of young people and is ranked from Quintile 1 (areas with the lowest young participation rates, considered as the most disadvantaged) to Quintile 5 (highest young participation rates, considered most advantaged). POLAR3 is based on the participation rates of young people between 2005 and 2009 who entered Higher Education between 2005-06 and 2010-11, therefore is most suitable for applicants aged 19 and under. These groups are assigned using the postcode declared by the applicant at the time of their application. If a UK postcode is invalid, considered unsafe for measurement or there is no link to Census geography possible then the applicant is not assigned to a quintile. Applicants with no POLAR3 quintile are not reported.

Sex

Sex as declared by the applicant.

SIMD quintile

Scottish index of multiple deprivation (SIMD) for 2012 identifies small area concentrations of multiple deprivation across all of Scotland, providing a relative measure of deprivation amongst 6505 small areas (data zones) based on 7 socio-economic domains. These small areas are classified into five groups ranked from Quintile 1 (considered the most deprived) to Quintile 5 (considered least deprived), with equal populations in each quintile. Quintiles are assigned using the postcode declared by the applicant, applicants declaring invalid postcodes are classified as 'Not assigned' and are not reported.

SIMD is only defined for applicants domiciled in Scotland, therefore any applicants domiciled outside of Scotland cannot be assigned to an SIMD quintile and so are not reported for this measure.

SIMD is only reported for providers in Scotland. Application and entry rates by SIMD are reported in the 2016 End of Cycle Report and the 2016 cycle January deadline application rate report.

Statistics reported in the tables

All placed applicants

The number of applicants placed for entry into higher education at the provider through one of their choices, including any choices made through Extra, or via Adjustment, Clearing or RPA.

All placed applicants per 10,000 population

The number of total UK domiciled 18 year old placed applicants for entry into higher education at the provider divided by the number of UK 18 year olds in the population, multiplied by 10,000. This gives the number of 18 year olds, for every 10,000 in the population, that were placed at the provider through one of their choices, including any choices made through Extra, or via Adjustment, Clearing or RPA. It is an alternative way of expressing the entry rate to a provider. By referencing the underlying population this statistic shows how the number of placed applicants is changing in relation to the available pool of potential applicants and so gives the chance that somebody from the group will be placed at a provider.

This statistic is only reported for 18 year olds.

Average offer rate

The offer rate that you might expect if the predicted grades and subject choice of applicants were the only factors that influenced whether an applicant was made an offer by the provider. The average offer rate is calculated by dividing applicants according to their specific combination of grades (for A levels the best three predicted grades are used, for BTECs, International Baccalaureate and Scottish Highers and Advanced Highers, predicted grades along with any grades already achieved upon applying are used) and subject choice. For each combination the number of main scheme offers is divided by the number of main scheme applications, to give an overall offer rate. This is then multiplied by the number of applications made by the group for which the average offer rate is being calculated (for example POLAR3 quintile 1), to give an average number of offers for that group. These average number of offers are then added together across all combinations of predicted grade and subject and divided by the number of main scheme applications from the group to give the average offer rate.

The average offer rate does not attempt to control for any other factors that may play a part in the decision to make an offer, such as the subject of the qualifications studied, their relevance to a course, or the grade in each subject; higher numbers of A levels being studied; the exact profile of grades predicted; personal statements; teacher references; interviews; or any other criteria (such as work experience or portfolios) that may be part of the admissions decision.

This statistic is only reported for 18 year olds.

Contribution of group to the average offer rate

The way in which the average offer rate is defined means that the pattern of application and offers of a group (for example POLAR3 quintile 1) will always contribute, in part, to the average offer rate for that group. When this contribution is large, the average offer rate will mainly reflect the patterns for the group, meaning that the value of the average offer rate will be similar to the offer rate, the percentage point difference statistic will be small, and any real difference between the offer rate and what might be expected given the predicted grades and subject choices of the applicants will be difficult to detect.

Values of the contribution of group to the average offer rate range between 0 and 1. The closer the value is to 1 the greater the contribution a group makes to its own average offer rate.

This statistic is only reported for 18 year olds.

Placed June deadline applicants

An applicant who has been placed for entry into higher education at the provider through a June deadline application.

Placed June deadline applicants per 10,000 population

The number of UK domiciled 18 year old placed June deadline applicants at the provider divided by the number of UK 18 year olds in the population, multiplied by 10,000. This gives the number of 18 year olds, for every 10,000 in the population, that were placed at the provider through one of their June deadline applications. It is an alternative way of expressing the entry rate to a provider, but for placed June deadline applicants only. By referencing the underlying population this statistic shows how the number of placed June deadline applicants is changing in relation to the available pool of potential 18 year old applicants and so gives the chance that somebody from the group will be placed at a provider through a June deadline application.

This statistic is only reported for 18 year olds.

June deadline applications

An application (or choice) to a course in higher education to the provider that is made by the June 30 deadline. Each applicant can make up to five choices this way. The number of June deadline applications does not include choices made through the following routes: Clearing, Extra, Adjustment and RPAs. Applications made to October deadline courses received after the October deadline are not included in these statistics.

June deadline applicants

The number of applicants that made at least one application to the provider by the June 30 deadline.

June deadline applicants per 10,000 population

The number of UK domiciled 18 year old June deadline applicants to the provider divided by the number of UK 18 year olds in the population, multiplied by 10,000. This gives the number of 18 year olds, for every 10,000 in the population, who applied by the June 30 deadline. It is equivalent to the application rate. By referencing the underlying population this statistic shows how the number of June deadline applicants is changing in relation to the available pool of potential 18 year old applicants and so gives the chance that somebody from the group will apply to a provider by the June 30 deadline.

This statistic is only reported for 18 year olds.

Offers

An offer is defined as a provider's decision in response to an application to offer a place to an applicant, often subject to the applicant satisfying academic and/or other criteria, via a June deadline application (i.e. does not cover choices made through the following routes: Clearing, Extra, Adjustment and RPAs).

Offer rate

The number of offers made divided by the number of June deadline applications. This gives the proportion of all June deadline applications to the provider that received an offer.

Percentage point difference between offer rate and average offer rate

The offer rate minus the average offer rate.

The percentage point difference can be compared to the expected range of statistical variation resulting from the calculation of the average offer rate using the Average Offer Rate Lookup Table. Where the value of the percentage point difference lies outside of this range, the percentage point difference may be considered to represent a real difference between the offer rate and the average offer rate.

Other definitions

Age

This analysis uses country-specific age definitions that align with the cut off points for school and college cohorts within the different administrations of the UK. For England and Wales, ages are defined on the 31 August, for Northern Ireland on the 1 July and for Scotland on the 28 February the following year. Defining ages in this way matches the assignment of children to school cohorts. For applicants outside of the UK a cohort cut off of 31 August has been used.

Provider

A higher education provider - a university or college.

UK domiciled

Declared area of permanent residence within England, Northern Ireland, Scotland and Wales. Applicants from the Channel Islands and Isle of Man are not included.