

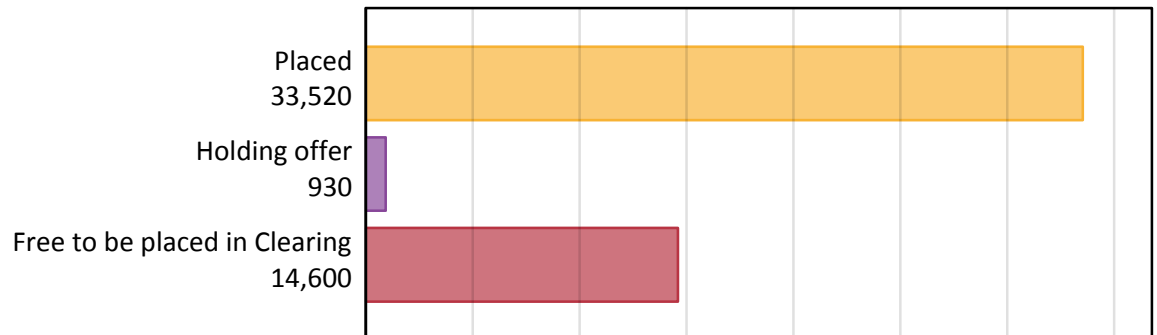
# Daily Clearing Analysis: Overview

Analysis at 00:05 on Friday 2 September 2016 (15 days after A level results day)

## A.1 Applicants by type and status from Scotland, 2016 cycle

| Applicant type     | Status                        | 2016   |
|--------------------|-------------------------------|--------|
| Main scheme        | Placed (Clearing)             | 1,230  |
|                    | Placed (Adjustment)           | 10     |
|                    | Placed (Firm)                 | 29,820 |
|                    | Placed (Insurance)            | 1,470  |
|                    | Placed (Other)                | 680    |
|                    | Holding offer                 | 930    |
|                    | Free to be placed in Clearing | 14,600 |
| Direct to Clearing | Placed (Direct to Clearing)   | 320    |
|                    | Other (Direct to Clearing)    | 340    |
| All applicants     | Placed                        | 33,520 |

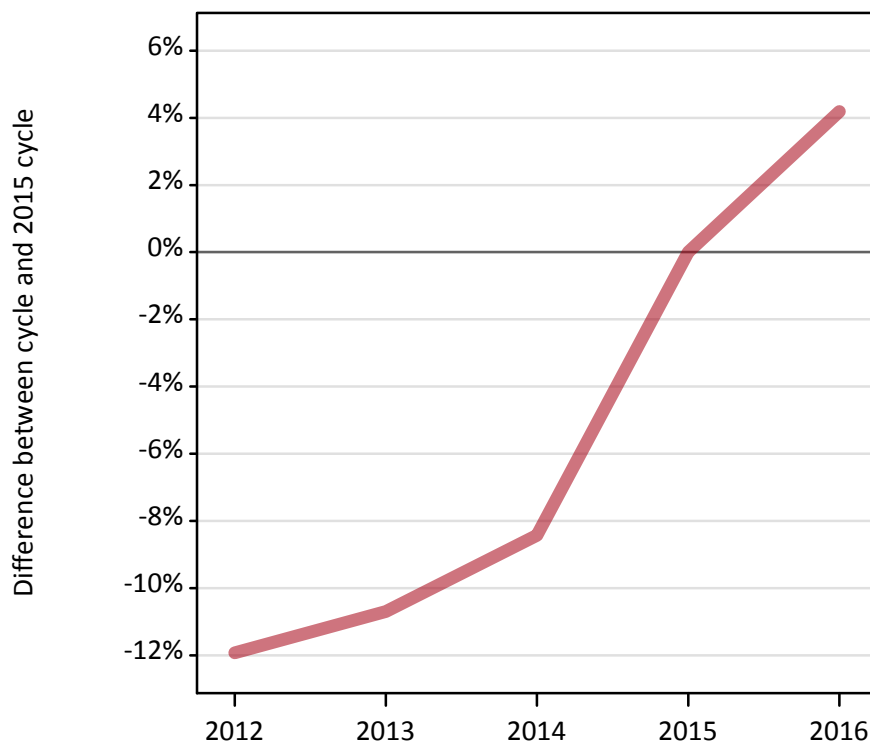
## A.2 Summary of applicants who are placed, holding offers or free to be placed in Clearing ( Scotland )



### A.3 All placed applicants from Scotland: 15 days after A level results day

All placed applicants: difference between cycle and 2015 cycle

Placed



### A.4 All placed applicants from Scotland: 15 days after A level results day

All placed applicants: applicants at 15 days after A level results day

| Applicant type | Status | 2012   | 2013   | 2014   | 2015   | 2016   |
|----------------|--------|--------|--------|--------|--------|--------|
| All applicants | Placed | 28,340 | 28,740 | 29,470 | 32,180 | 33,520 |

### A.5 All placed applicants from Scotland: 15 days after A level results day

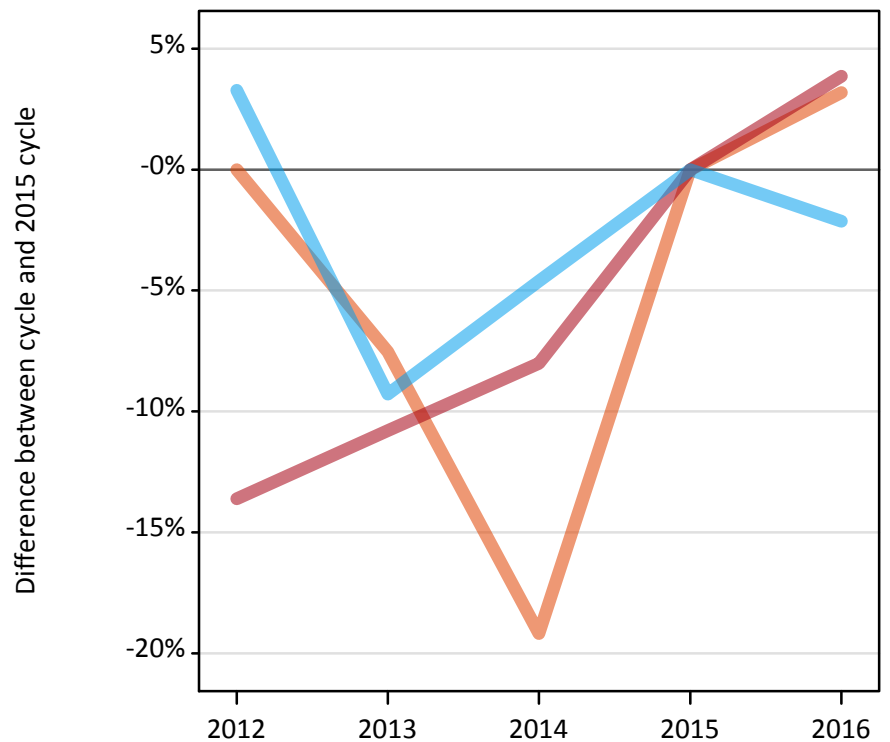
All placed applicants: difference between cycle and 2015 cycle

| Applicant type | Status | 2012 | 2013 | 2014 | 2015 | 2016 |
|----------------|--------|------|------|------|------|------|
| All applicants | Placed | -12% | -11% | -8%  | 0%   | 4%   |

### A.6 Placed main scheme applicants from Scotland: 15 days after A level results day

Selected placed routes: difference between cycle and 2015 cycle

- Placed (Clearing)
- Placed (Firm)
- Placed (Insurance)



### A.7 Placed main scheme applicants from Scotland: 15 days after A level results day

All Main scheme placed routes (excluding Adjustment): applicants at 15 days after A level results day

| Applicant type | Status             | 2012   | 2013   | 2014   | 2015   | 2016   |
|----------------|--------------------|--------|--------|--------|--------|--------|
| Main scheme    | Placed (Clearing)  | 1,190  | 1,100  | 970    | 1,190  | 1,230  |
|                | Placed (Firm)      | 24,800 | 25,610 | 26,410 | 28,710 | 29,820 |
|                | Placed (Insurance) | 1,550  | 1,360  | 1,430  | 1,500  | 1,470  |
|                | Placed (Other)     | 630    | 500    | 520    | 550    | 680    |

### A.8 Placed main scheme applicants from Scotland: 15 days after A level results day

Selected placed routes: difference between cycle and 2015 cycle

| Applicant type | Status             | 2012 | 2013 | 2014 | 2015 | 2016 |
|----------------|--------------------|------|------|------|------|------|
| Main scheme    | Placed (Clearing)  | 0%   | -8%  | -19% | 0%   | 3%   |
|                | Placed (Firm)      | -14% | -11% | -8%  | 0%   | 4%   |
|                | Placed (Insurance) | 3%   | -9%  | -5%  | 0%   | -2%  |

### A.9 Main scheme applicants placed through adjustment: 15 days after A level results day

Placed through adjustment: difference between cycle and 2015 cycle

Placed (Adjustment)



### A.10 Main scheme applicants placed through adjustment: 15 days after A level results day

Placed through adjustment: applicants at 15 days after A level results day

| Applicant type | Status              | 2012 | 2013 | 2014 | 2015 | 2016 |
|----------------|---------------------|------|------|------|------|------|
| Main scheme    | Placed (Adjustment) | 20   | 10   | 10   | 10   | 10   |

### A.11 Main scheme applicants placed through adjustment: 15 days after A level results day

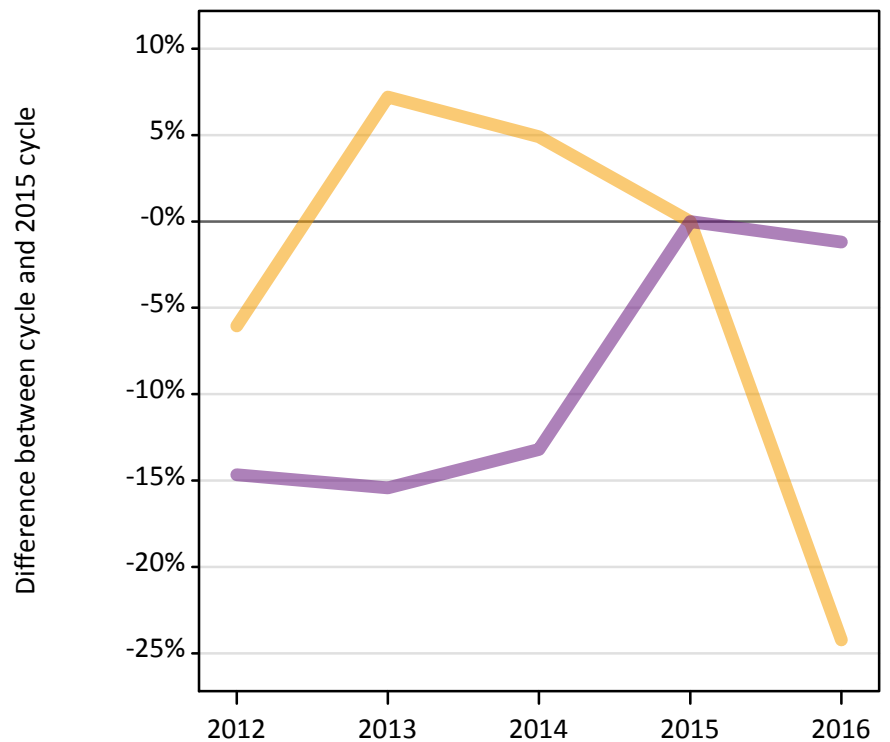
Placed through adjustment: difference between cycle and 2015 cycle

| Applicant type | Status              | 2012 | 2013 | 2014 | 2015 | 2016 |
|----------------|---------------------|------|------|------|------|------|
| Main scheme    | Placed (Adjustment) | 240% | 120% | 120% | 0%   | 80%  |

### A.12 Main scheme applicants not currently placed from Scotland: 15 days after A level results day

Applicants in unplaced states: difference between cycle and 2015 cycle

— Holding offer  
— Free to be placed in Clearing



### A.13 Main scheme applicants not currently placed from Scotland: 15 days after A level results day

Applicants in unplaced states: applicants at 15 days after A level results day

| Applicant type | Status                        | 2012   | 2013   | 2014   | 2015   | 2016   |
|----------------|-------------------------------|--------|--------|--------|--------|--------|
| Main scheme    | Holding offer                 | 1,150  | 1,310  | 1,280  | 1,220  | 930    |
|                | Free to be placed in Clearing | 12,610 | 12,500 | 12,820 | 14,770 | 14,600 |

### A.14 Main scheme applicants not currently placed from Scotland: 15 days after A level results day

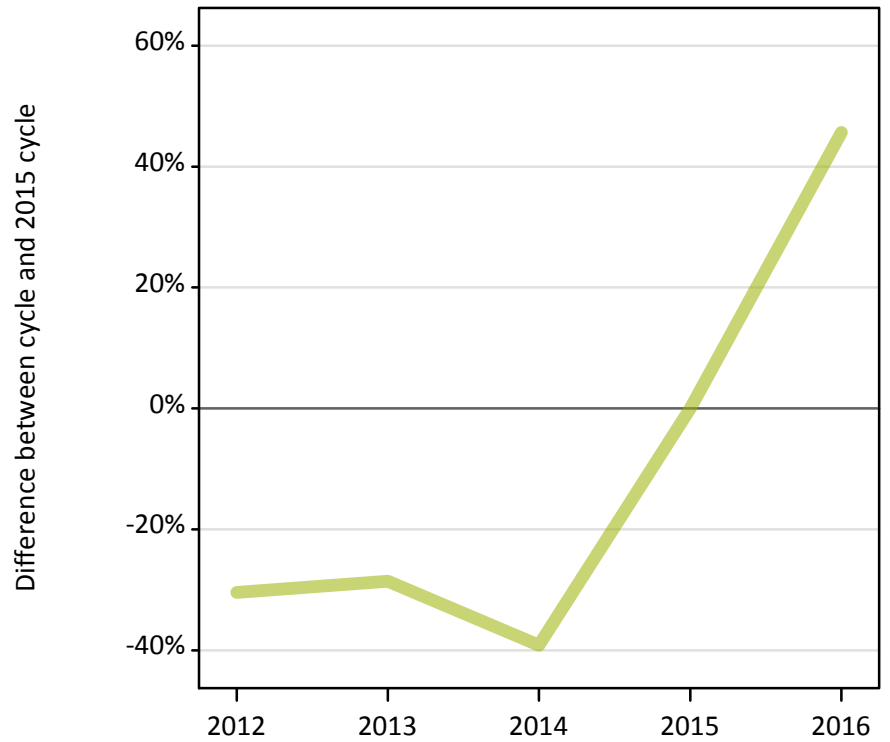
Applicants in unplaced states: difference between cycle and 2015 cycle

| Applicant type | Status                        | 2012 | 2013 | 2014 | 2015 | 2016 |
|----------------|-------------------------------|------|------|------|------|------|
| Main scheme    | Holding offer                 | -6%  | 7%   | 5%   | 0%   | -24% |
|                | Free to be placed in Clearing | -15% | -15% | -13% | 0%   | -1%  |

### A.15 Direct to Clearing applicants from Scotland: 15 days after A level results day

Placed (Direct to Clearing): difference between cycle and 2015 cycle

Placed (Direct to Clearing)



### A.16 Direct to Clearing applicants from Scotland: 15 days after A level results day

Direct to Clearing 15 days after A level results day

| Applicant type     | Status                      | 2012 | 2013 | 2014 | 2015 | 2016 |
|--------------------|-----------------------------|------|------|------|------|------|
| Direct to Clearing | Placed (Direct to Clearing) | 150  | 160  | 130  | 220  | 320  |
|                    | Other (Direct to Clearing)  | 270  | 280  | 260  | 350  | 340  |

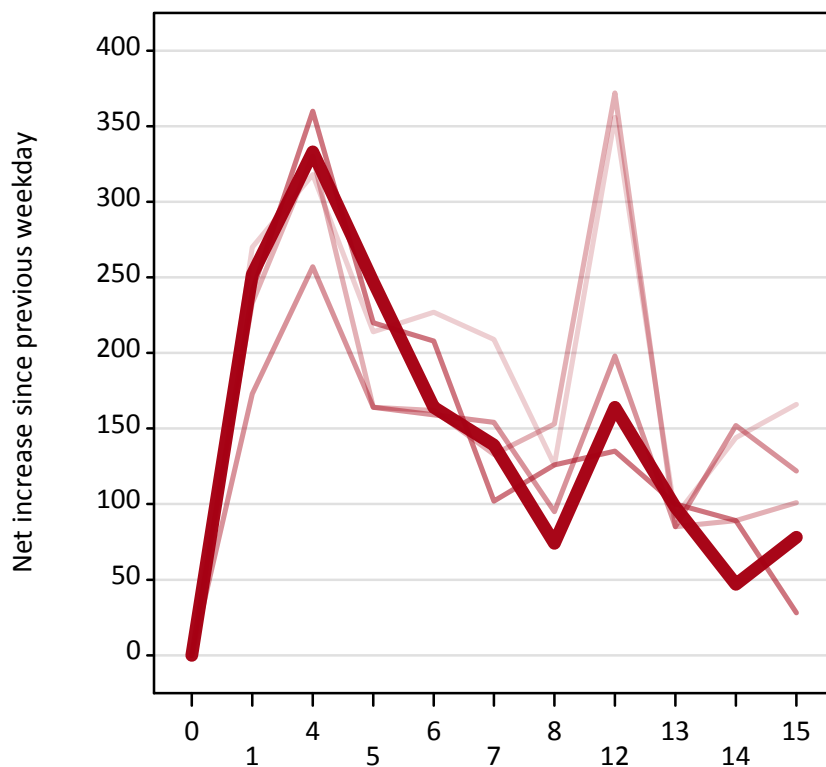
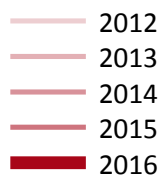
### A.17 Direct to Clearing applicants from Scotland: 15 days after A level results day

Placed (Direct to Clearing): difference between cycle and 2015 cycle

| Applicant type     | Status                      | 2012 | 2013 | 2014 | 2015 | 2016 |
|--------------------|-----------------------------|------|------|------|------|------|
| Direct to Clearing | Placed (Direct to Clearing) | -30% | -29% | -39% | 0%   | 46%  |

### A.18 All Placed: Daily net change (from Scotland)

Net increase since previous weekday (2016 cycle up to 15 days after A level results day)



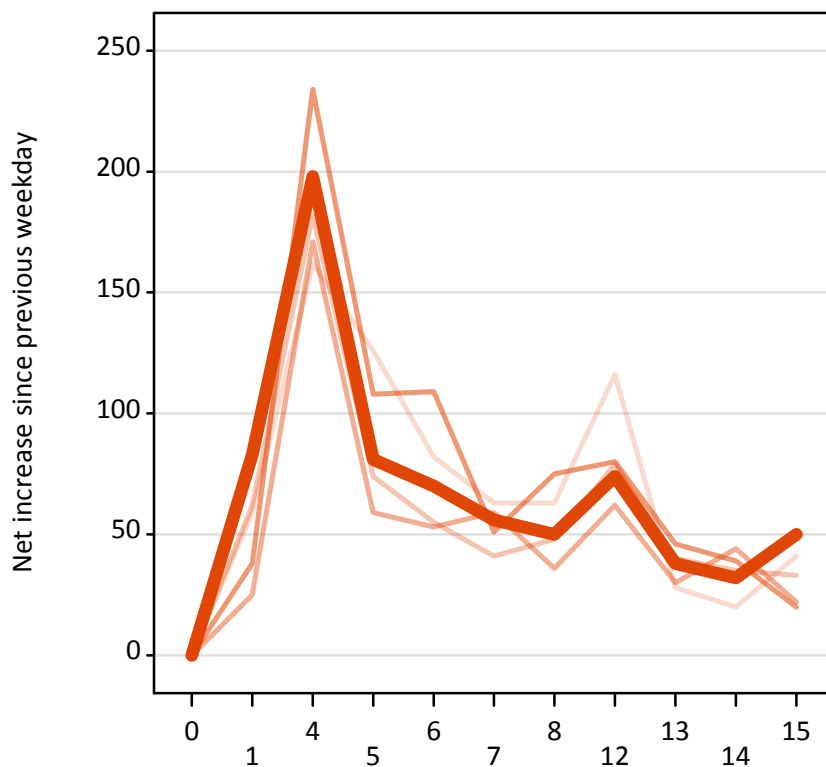
### A.19 All Placed: Daily net change (from Scotland)

Net increase since previous weekday (2016 cycle up to 15 days after A level results day)

| Applicant status, days since A level results day |    | 2012 | 2013 | 2014 | 2015 | 2016 |
|--|----|------|------|------|------|------|
| All Placed                                       | 0  | 0    | 0    | 0    | 0    | 0    |
|  | 1  | 270  | 230  | 170  | 240  | 250  |
|  | 4  | 320  | 330  | 260  | 360  | 330  |
|  | 5  | 210  | 160  | 160  | 220  | 250  |
|  | 6  | 230  | 160  | 160  | 210  | 160  |
|  | 7  | 210  | 130  | 150  | 100  | 140  |
|  | 8  | 130  | 150  | 100  | 130  | 70   |
|  | 12 | 360  | 370  | 200  | 140  | 160  |
|  | 13 | 90   | 90   | 90   | 100  | 100  |
|  | 14 | 140  | 90   | 150  | 90   | 50   |
|  | 15 | 170  | 100  | 120  | 30   | 80   |

### A.20 Placed through Clearing only: Daily net change (from Scotland)

Net increase since previous weekday (2016 cycle up to 15 days after A level results day)



### A.21 Placed through Clearing only: Daily net change (from Scotland)

Net increase since previous weekday (2016 cycle up to 15 days after A level results day)

| Applicant status, days since A level results day |    | 2012 | 2013 | 2014 | 2015 | 2016 |
|--|----|------|------|------|------|------|
| Placed through Clearing only                     | 0  | 0    | 0    | 0    | 0    | 0    |
|  | 1  | 60   | 60   | 30   | 40   | 80   |
|  | 4  | 160  | 180  | 170  | 230  | 200  |
|  | 5  | 130  | 70   | 60   | 110  | 80   |
|  | 6  | 80   | 60   | 50   | 110  | 70   |
|  | 7  | 60   | 40   | 60   | 50   | 60   |
|  | 8  | 60   | 50   | 40   | 80   | 50   |
|  | 12 | 120  | 80   | 60   | 80   | 70   |
|  | 13 | 30   | 40   | 30   | 50   | 40   |
|  | 14 | 20   | 40   | 40   | 40   | 30   |
|  | 15 | 40   | 30   | 20   | 20   | 50   |



### A.22 Holding Offer: Daily net change (from Scotland)

Net increase since previous weekday (2016 cycle up to 15 days after A level results day)



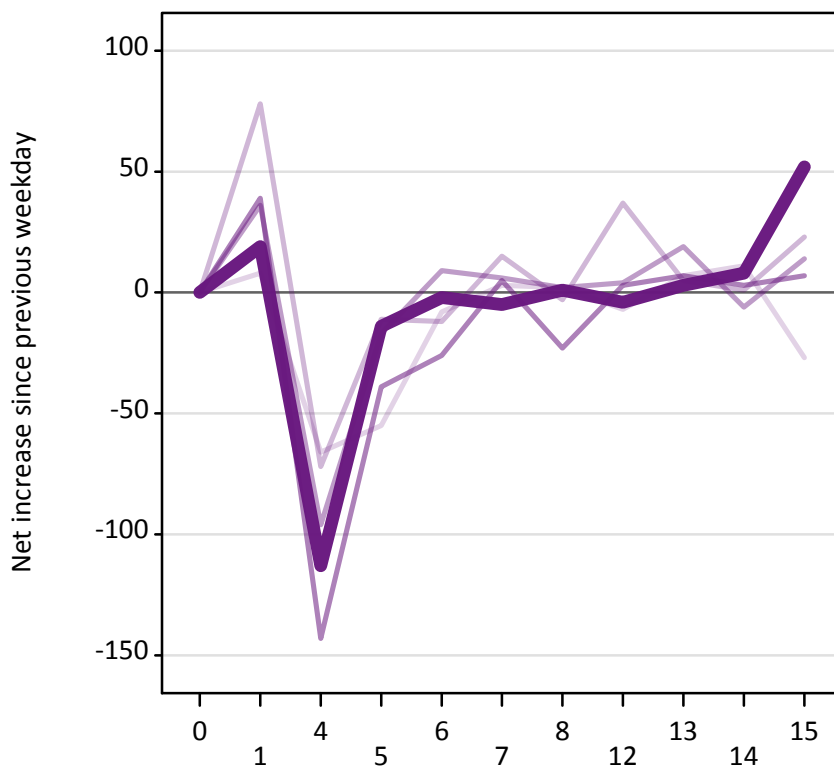
### A.23 Holding Offer: Daily net change (from Scotland)

Net increase since previous weekday (2016 cycle up to 15 days after A level results day)

| Applicant status, days since A level results day |    | 2012 | 2013 | 2014 | 2015 | 2016 |
|--|----|------|------|------|------|------|
| Holding Offer                                    | 0  | 0    | 0    | 0    | 0    | 0    |
|  | 1  | -280 | -330 | -210 | -290 | -270 |
|  | 4  | -250 | -260 | -170 | -220 | -210 |
|  | 5  | -150 | -160 | -160 | -190 | -240 |
|  | 6  | -220 | -150 | -180 | -180 | -180 |
|  | 7  | -220 | -160 | -160 | -120 | -130 |
|  | 8  | -130 | -150 | -100 | -100 | -90  |
|  | 12 | -360 | -410 | -210 | -150 | -180 |
|  | 13 | -110 | -100 | -110 | -110 | -110 |
|  | 14 | -160 | -100 | -150 | -90  | -70  |
|  | 15 | -140 | -120 | -140 | -50  | -140 |

### A.24 Free to be placed in Clearing: Daily net change (from Scotland)

Net increase since previous weekday (2016 cycle up to 15 days after A level results day)



### A.25 Free to be placed in Clearing: Daily net change (from Scotland)

Net increase since previous weekday (2016 cycle up to 15 days after A level results day)

| Applicant status, days since A level results day |    | 2012 | 2013 | 2014 | 2015 | 2016 |
|--|----|------|------|------|------|------|
| Free to be placed in Clearing                    | 0  | 0    | 0    | 0    | 0    | 0    |
|  | 1  | 10   | 80   | 40   | 40   | 20   |
|  | 4  | -70  | -70  | -100 | -140 | -110 |
|  | 5  | -60  | -10  | -20  | -40  | -10  |
|  | 6  | -10  | -10  | 10   | -30  | 0    |
|  | 7  | 0    | 20   | 10   | 10   | -10  |
|  | 8  | 0    | 0    | 0    | -20  | 0    |
|  | 12 | -10  | 40   | 0    | 0    | 0    |
|  | 13 | 10   | 10   | 20   | 10   | 0    |
|  | 14 | 10   | 0    | -10  | 0    | 10   |
|  | 15 | -30  | 20   | 10   | 10   | 50   |