

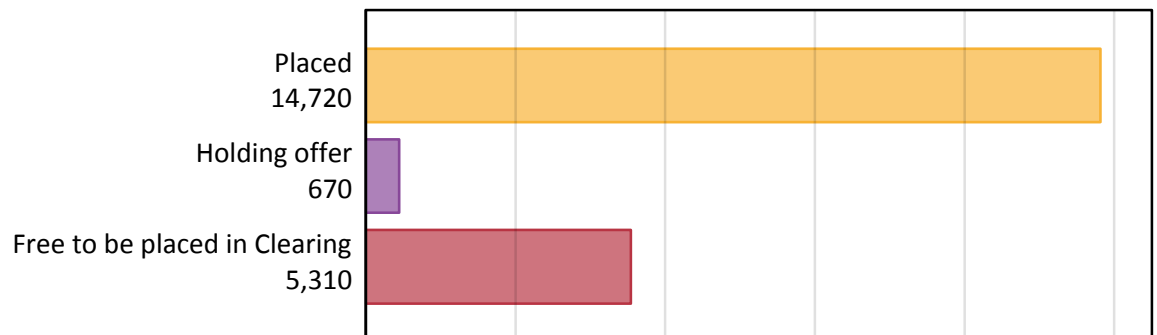
# Daily Clearing Analysis: Overview

Analysis at 00:05 on Friday 2 September 2016 (15 days after A level results day)

## A.1 Applicants by type and status from Northern Ireland, 2016 cycle

Applicant type	Status	2016
Main scheme	Placed (Clearing)	890
	Placed (Adjustment)	30
	Placed (Firm)	12,250
	Placed (Insurance)	1,370
	Placed (Other)	120
	Holding offer	670
	Free to be placed in Clearing	5,310
Direct to Clearing	Placed (Direct to Clearing)	80
	Other (Direct to Clearing)	60
All applicants	Placed	14,720

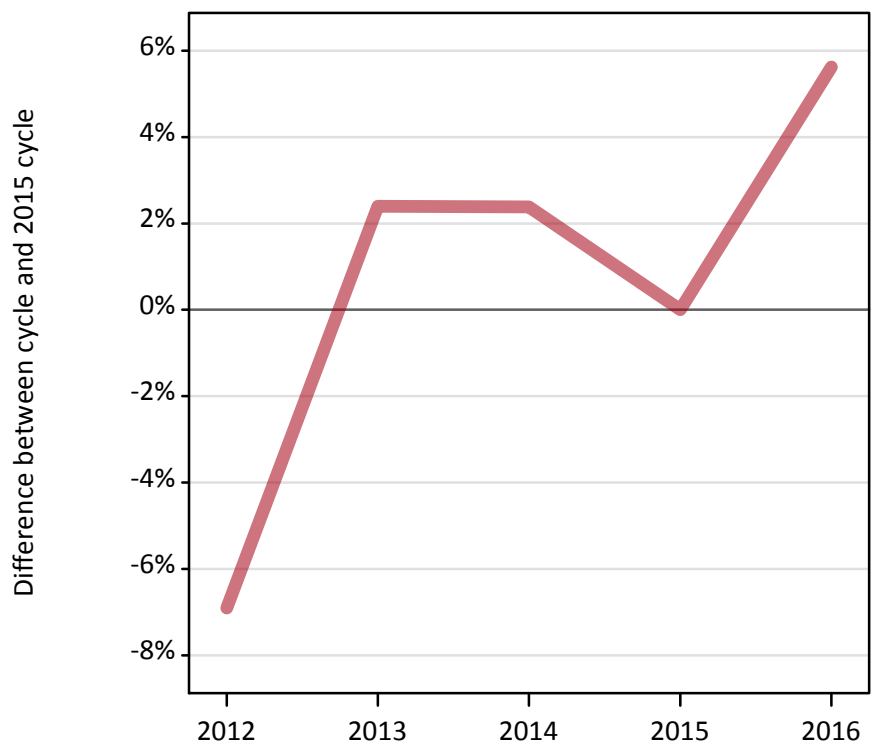
## A.2 Summary of applicants who are placed, holding offers or free to be placed in Clearing ( Northern Ireland )



### A.3 All placed applicants from Northern Ireland: 15 days after A level results day

All placed applicants: difference between cycle and 2015 cycle

Placed



### A.4 All placed applicants from Northern Ireland: 15 days after A level results day

All placed applicants: applicants at 15 days after A level results day

Applicant type	Status	2012	2013	2014	2015	2016
All applicants	Placed	12,980	14,270	14,270	13,940	14,720

### A.5 All placed applicants from Northern Ireland: 15 days after A level results day

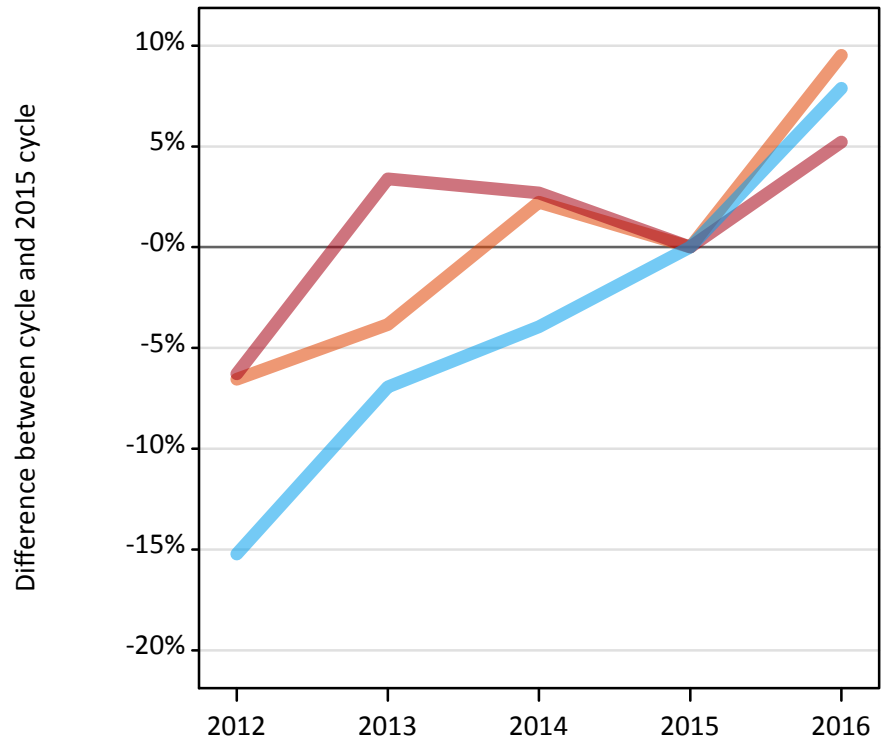
All placed applicants: difference between cycle and 2015 cycle

Applicant type	Status	2012	2013	2014	2015	2016
All applicants	Placed	-7%	2%	2%	0%	6%

### A.6 Placed main scheme applicants from Northern Ireland: 15 days after A level results day

Selected placed routes: difference between cycle and 2015 cycle

- Placed (Clearing)
- Placed (Firm)
- Placed (Insurance)



### A.7 Placed main scheme applicants from Northern Ireland: 15 days after A level results day

All Main scheme placed routes (excluding Adjustment): applicants at 15 days after A level results day

Applicant type	Status	2012	2013	2014	2015	2016
Main scheme	Placed (Clearing)	760	780	830	810	890
	Placed (Firm)	10,910	12,030	11,950	11,640	12,250
	Placed (Insurance)	1,080	1,180	1,220	1,270	1,370
	Placed (Other)	140	150	150	120	120

### A.8 Placed main scheme applicants from Northern Ireland: 15 days after A level results day

Selected placed routes: difference between cycle and 2015 cycle

Applicant type	Status	2012	2013	2014	2015	2016
Main scheme	Placed (Clearing)	-7%	-4%	2%	0%	10%
	Placed (Firm)	-6%	3%	3%	0%	5%
	Placed (Insurance)	-15%	-7%	-4%	0%	8%

### A.9 Main scheme applicants placed through adjustment: 15 days after A level results day

Placed through adjustment: difference between cycle and 2015 cycle

Placed (Adjustment)



### A.10 Main scheme applicants placed through adjustment: 15 days after A level results day

Placed through adjustment: applicants at 15 days after A level results day

Applicant type	Status	2012	2013	2014	2015	2016
Main scheme	Placed (Adjustment)	30	30	30	40	30

### A.11 Main scheme applicants placed through adjustment: 15 days after A level results day

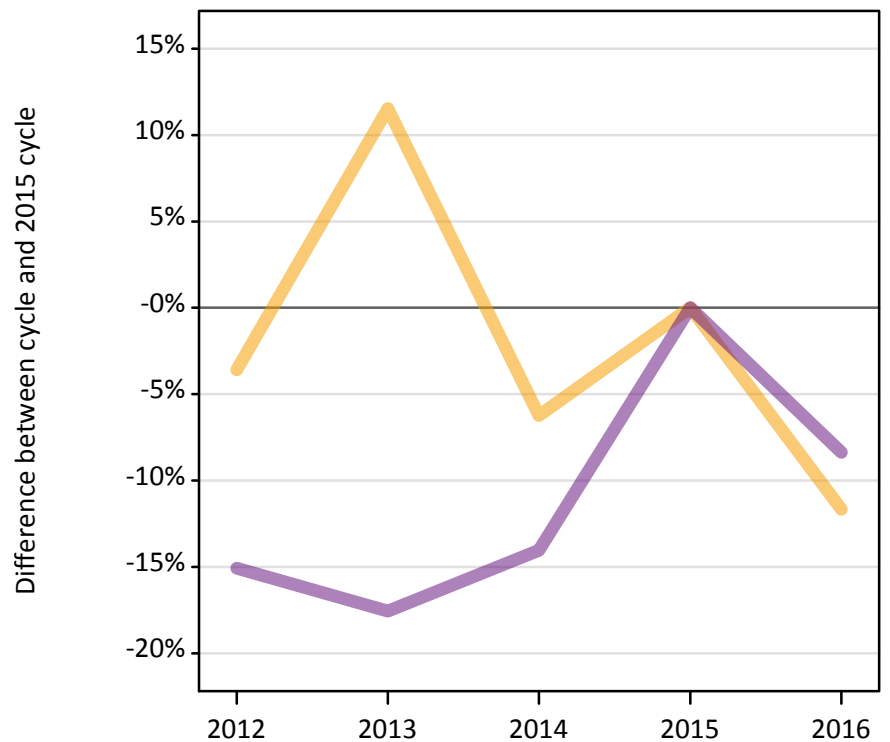
Placed through adjustment: difference between cycle and 2015 cycle

Applicant type	Status	2012	2013	2014	2015	2016
Main scheme	Placed (Adjustment)	-26%	-9%	-11%	0%	-29%

### A.12 Main scheme applicants not currently placed from Northern Ireland: 15 days after A level results day

Applicants in unplaced states: difference between cycle and 2015 cycle

— Holding offer  
— Free to be placed in Clearing



### A.13 Main scheme applicants not currently placed from Northern Ireland: 15 days after A level results day

Applicants in unplaced states: applicants at 15 days after A level results day

Applicant type	Status	2012	2013	2014	2015	2016
Main scheme	Holding offer	730	840	710	750	670
	Free to be placed in Clearing	4,920	4,780	4,980	5,800	5,310

### A.14 Main scheme applicants not currently placed from Northern Ireland: 15 days after A level results day

Applicants in unplaced states: difference between cycle and 2015 cycle

Applicant type	Status	2012	2013	2014	2015	2016
Main scheme	Holding offer	-4%	12%	-6%	0%	-12%
	Free to be placed in Clearing	-15%	-18%	-14%	0%	-8%

### A.15 Direct to Clearing applicants from Northern Ireland: 15 days after A level results day

Placed (Direct to Clearing): difference between cycle and 2015 cycle

Placed (Direct to Clearing)



### A.16 Direct to Clearing applicants from Northern Ireland: 15 days after A level results day

Direct to Clearing 15 days after A level results day

Applicant type	Status	2012	2013	2014	2015	2016
Direct to Clearing	Placed (Direct to Clearing)	70	100	90	70	80
	Other (Direct to Clearing)	80	70	90	60	60

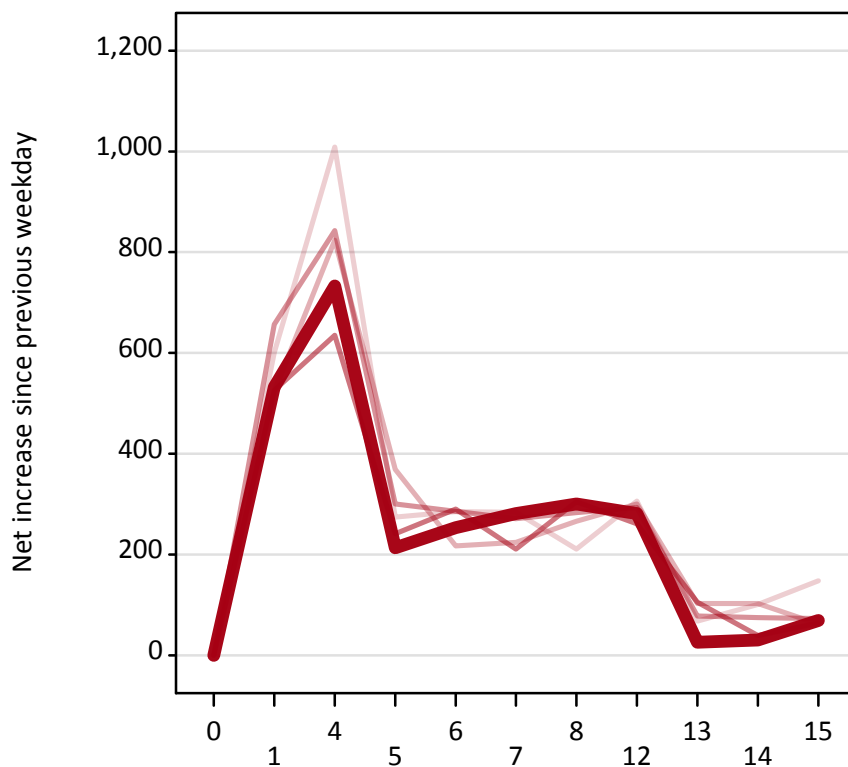
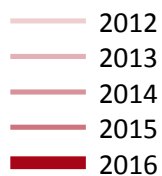
### A.17 Direct to Clearing applicants from Northern Ireland: 15 days after A level results day

Placed (Direct to Clearing): difference between cycle and 2015 cycle

Applicant type	Status	2012	2013	2014	2015	2016
Direct to Clearing	Placed (Direct to Clearing)	-5%	34%	27%	0%	11%

### A.18 All Placed: Daily net change (from Northern Ireland)

Net increase since previous weekday (2016 cycle up to 15 days after A level results day)



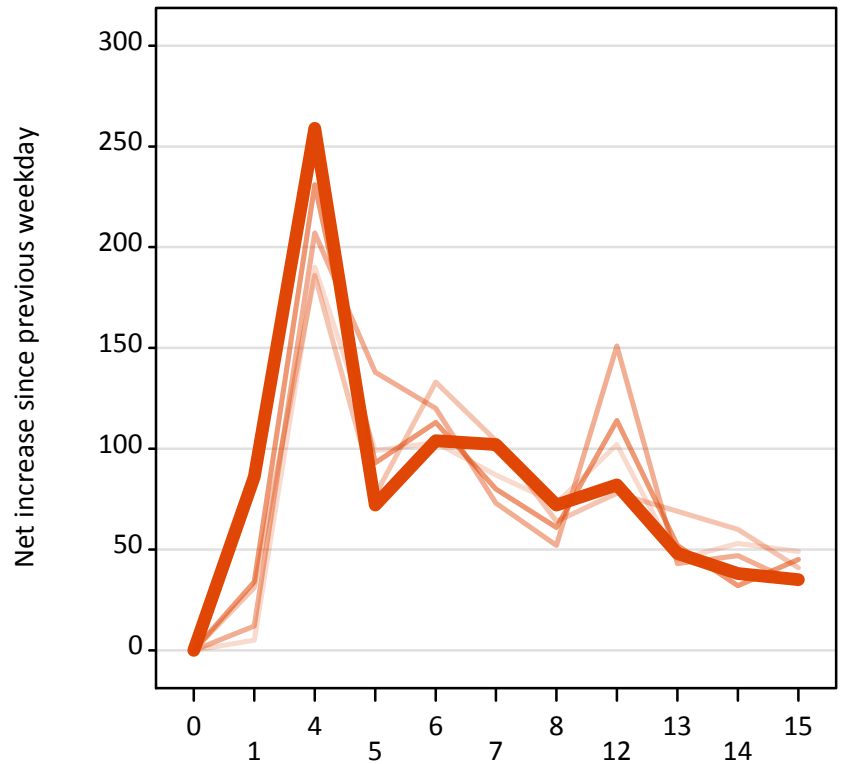
### A.19 All Placed: Daily net change (from Northern Ireland)

Net increase since previous weekday (2016 cycle up to 15 days after A level results day)

Applicant status, days since A level results day		2012	2013	2014	2015	2016
All Placed	0	0	0	0	0	0
	1	600	520	660	530	530
	4	1,010	820	840	640	730
	5	270	370	300	240	210
	6	290	220	290	290	250
	7	280	220	270	210	280
	8	210	270	280	310	300
	12	310	300	290	260	280
	13	70	100	80	110	30
	14	100	100	80	40	30
	15	150	60	70	60	70

### A.20 Placed through Clearing only: Daily net change (from Northern Ireland)

Net increase since previous weekday (2016 cycle up to 15 days after A level results day)



### A.21 Placed through Clearing only: Daily net change (from Northern Ireland)

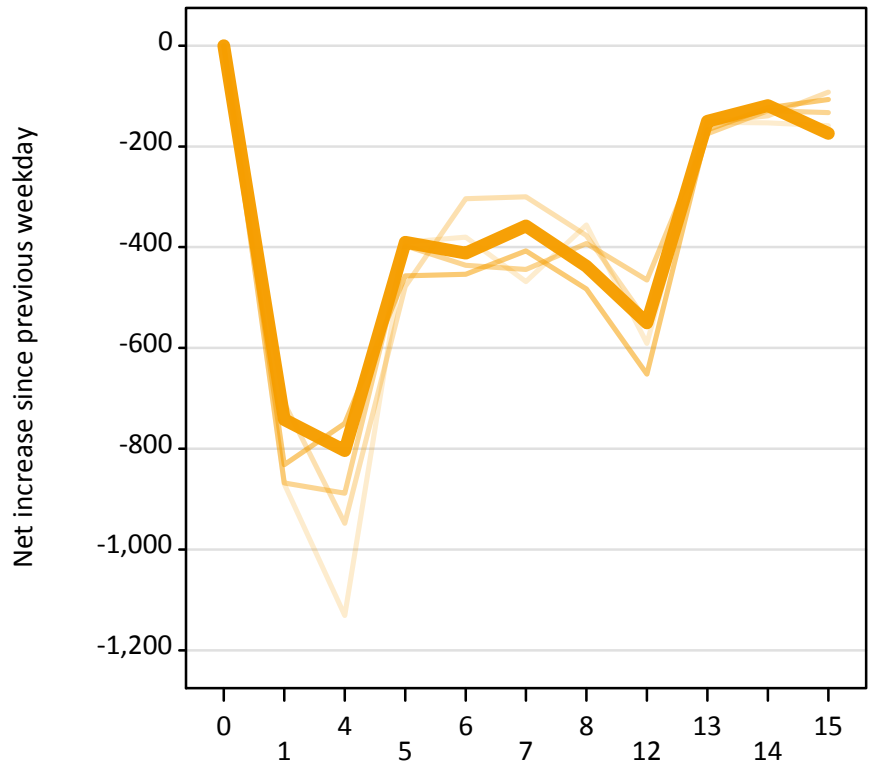
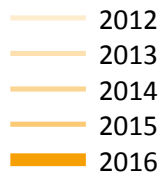
Net increase since previous weekday (2016 cycle up to 15 days after A level results day)

Applicant status, days since A level results day		2012	2013	2014	2015	2016
Placed through Clearing only	0	0	0	0	0	0
	1	10	30	10	30	90
	4	190	190	210	230	260
	5	100	80	140	90	70
	6	100	130	120	110	100
	7	90	100	70	80	100
	8	70	60	50	60	70
	12	100	80	150	110	80
	13	50	70	40	50	50
	14	50	60	50	30	40
	15	50	40	30	50	40



### A.22 Holding Offer: Daily net change (from Northern Ireland)

Net increase since previous weekday (2016 cycle up to 15 days after A level results day)



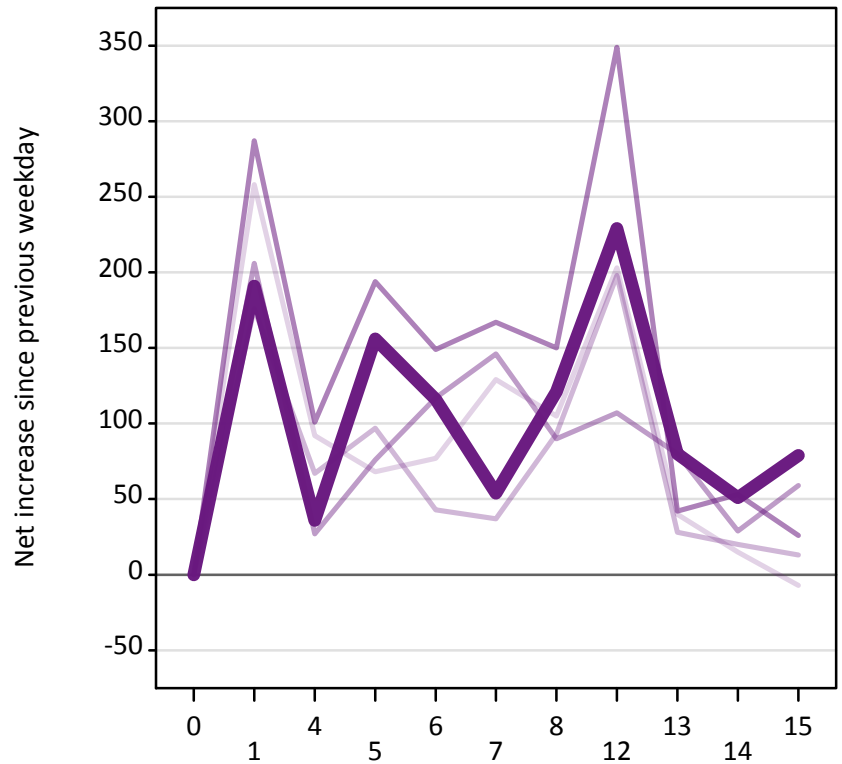
### A.23 Holding Offer: Daily net change (from Northern Ireland)

Net increase since previous weekday (2016 cycle up to 15 days after A level results day)

Applicant status, days since A level results day		2012	2013	2014	2015	2016
Holding Offer	0	0	0	0	0	0
	1	-870	-710	-870	-830	-740
	4	-1,130	-950	-890	-750	-800
	5	-390	-480	-400	-460	-390
	6	-380	-300	-440	-450	-410
	7	-470	-300	-440	-410	-360
	8	-360	-380	-390	-480	-440
	12	-590	-550	-470	-650	-550
	13	-150	-150	-180	-170	-150
	14	-150	-140	-130	-120	-120
	15	-160	-90	-130	-110	-170

### A.24 Free to be placed in Clearing: Daily net change (from Northern Ireland)

Net increase since previous weekday (2016 cycle up to 15 days after A level results day)



### A.25 Free to be placed in Clearing: Daily net change (from Northern Ireland)

Net increase since previous weekday (2016 cycle up to 15 days after A level results day)

Applicant status, days since A level results day		2012	2013	2014	2015	2016
Free to be placed in Clearing	0	0	0	0	0	0
	1	260	180	210	290	190
	4	90	70	30	100	40
	5	70	100	80	190	160
	6	80	40	120	150	120
	7	130	40	150	170	50
	8	110	90	90	150	120
	12	200	200	110	350	230
	13	40	30	80	40	80
	14	20	20	30	50	50
	15	-10	10	60	30	80