

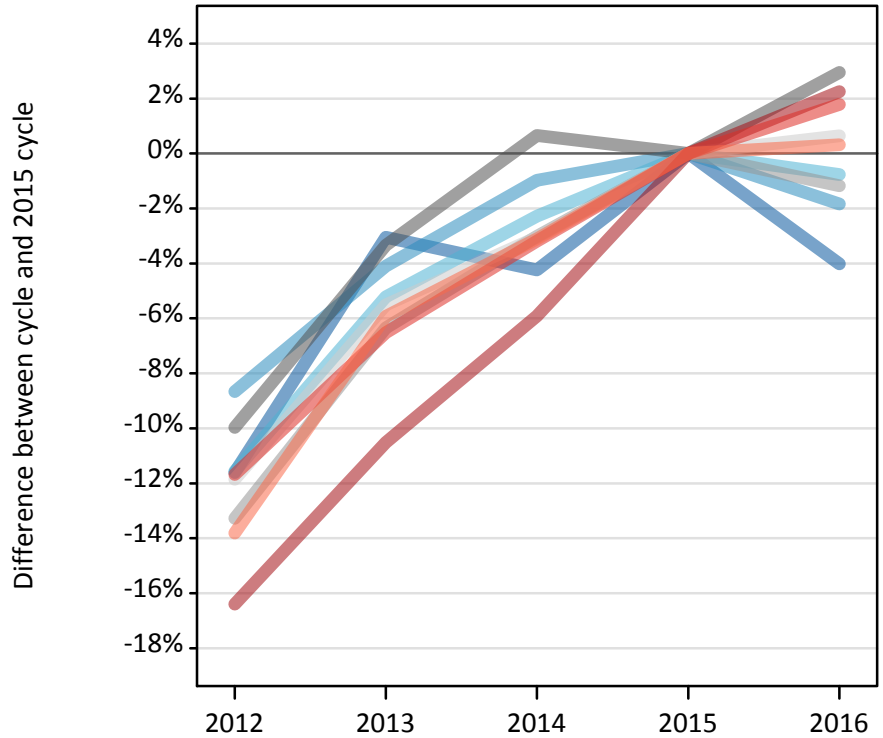
# Daily Clearing Analysis: Region

Analysis at 00:05 on Wednesday 31 August 2016 (13 days after A level results day)

## R.1 Placed applicants by region of domicile: 13 days after A level results day

Placed applicants: change relative to 2015 cycle totals

- North East
- North West
- Yorkshire and The Humber
- East Midlands
- West Midlands
- East of England
- London
- South East
- South West



## R.2 Placed applicants by region of domicile: 13 days after A level results day

Applicant Status	Domicile	2012	2013	2014	2015	2016
Placed	North East	14,000	15,350	15,170	15,840	15,200
	North West	44,080	46,280	47,790	48,260	47,370
	Yorkshire and The Humber	29,580	31,710	32,690	33,450	33,190
	East Midlands	24,760	26,580	27,680	27,500	28,310
	West Midlands	33,700	36,390	37,690	38,860	38,400
	East of England	33,100	35,480	36,410	37,550	37,800
	London	58,190	62,280	65,480	69,600	71,170
	South East	51,750	54,770	56,730	58,600	59,640
	South West	28,870	31,510	32,460	33,500	33,600
	(England total)	318,030	340,360	352,080	363,150	364,680
	Scotland	28,030	28,550	29,190	32,060	33,400
	Northern Ireland	12,730	14,110	14,120	13,840	14,620
	Wales	17,720	17,880	18,660	19,120	19,250
	UK	376,510	400,900	414,050	428,160	431,950

### R.3 Placed applicants by region of domicile: 13 days after A level results day

Placed applicants: change relative to 2015 cycle totals

Applicant Status	Domicile	2012	2013	2014	2015	2016
Placed	North East	-12%	-3%	-4%	0%	-4%
	North West	-9%	-4%	-1%	0%	-2%
	Yorkshire and The Humber	-12%	-5%	-2%	0%	-1%
	East Midlands	-10%	-3%	1%	0%	3%
	West Midlands	-13%	-6%	-3%	0%	-1%
	East of England	-12%	-6%	-3%	0%	1%
	London	-16%	-11%	-6%	0%	2%
	South East	-12%	-7%	-3%	0%	2%
	South West	-14%	-6%	-3%	0%	0%
	(England total)	-12%	-6%	-3%	0%	0%
	Scotland	-13%	-11%	-9%	0%	4%
	Northern Ireland	-8%	2%	2%	0%	6%
	Wales	-7%	-6%	-2%	0%	1%
	UK	-12%	-6%	-3%	0%	1%

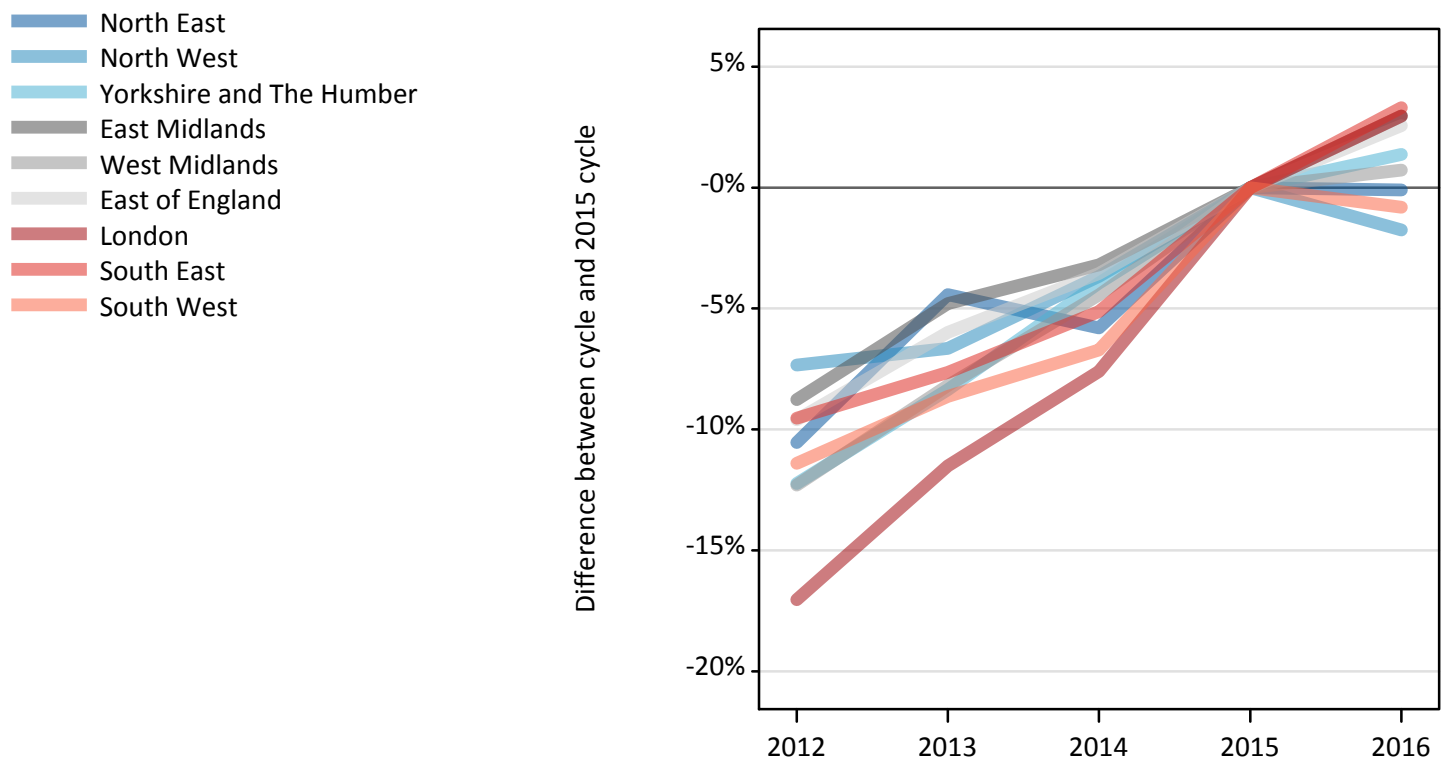
### R.4 Placed applicants by region of domicile: 13 days after A level results day

Placed applicants: absolute change relative to 2015 cycle totals

Applicant Status	Domicile	2012	2013	2014	2015	2016
Placed	North East	-1,840	-480	-670	0	-640
	North West	-4,180	-1,980	-470	0	-890
	Yorkshire and The Humber	-3,870	-1,750	-760	0	-260
	East Midlands	-2,740	-920	180	0	810
	West Midlands	-5,160	-2,470	-1,170	0	-460
	East of England	-4,450	-2,070	-1,140	0	240
	London	-11,410	-7,320	-4,120	0	1,570
	South East	-6,840	-3,820	-1,870	0	1,040
	South West	-4,630	-1,980	-1,040	0	110
	(England total)	-45,110	-22,780	-11,070	0	1,540
	Scotland	-4,030	-3,510	-2,870	0	1,340
	Northern Ireland	-1,110	270	290	0	790
	Wales	-1,400	-1,240	-460	0	130
	UK	-51,650	-27,260	-14,110	0	3,790

### R.5 Placed 18 year old applicants by region of domicile: 13 days after A level results day

Placed 18 year old applicants: change relative to 2015 cycle totals



### R.6 Placed 18 year old applicants by region of domicile: 13 days after A level results day

Applicant Status	Domicile	2012	2013	2014	2015	2016
Placed	North East	7,560	8,070	7,960	8,450	8,440
	North West	25,200	25,390	26,200	27,190	26,720
	Yorkshire and The Humber	16,510	17,240	18,060	18,810	19,070
	East Midlands	14,200	14,810	15,060	15,560	16,020
	West Midlands	18,590	19,460	20,250	21,200	21,350
	East of England	20,080	20,880	21,420	22,210	22,780
	London	29,320	31,270	32,650	35,340	36,380
	South East	30,620	31,270	32,120	33,850	34,970
	South West	15,440	15,930	16,260	17,430	17,290
	(England total)	177,510	184,310	189,980	200,030	203,020
	Scotland	14,060	14,140	14,310	14,400	14,640
	Northern Ireland	8,200	8,710	8,510	8,420	8,570
	Wales	9,700	9,630	10,030	10,500	10,600
	UK	209,470	216,800	222,830	233,350	236,820

## R.7 Placed 18 year old applicants by region of domicile: 13 days after A level results day

Placed 18 year old applicants: change relative to 2015 cycle totals

Applicant Status	Domicile	2012	2013	2014	2015	2016
Placed	North East	-11%	-4%	-6%	0%	-0%
	North West	-7%	-7%	-4%	0%	-2%
	Yorkshire and The Humber	-12%	-8%	-4%	0%	1%
	East Midlands	-9%	-5%	-3%	0%	3%
	West Midlands	-12%	-8%	-4%	0%	1%
	East of England	-10%	-6%	-4%	0%	3%
	London	-17%	-12%	-8%	0%	3%
	South East	-10%	-8%	-5%	0%	3%
	South West	-11%	-9%	-7%	0%	-1%
	(England total)	-11%	-8%	-5%	0%	1%
	Scotland	-2%	-2%	-1%	0%	2%
	Northern Ireland	-3%	3%	1%	0%	2%
	Wales	-8%	-8%	-4%	0%	1%
	UK	-10%	-7%	-5%	0%	1%

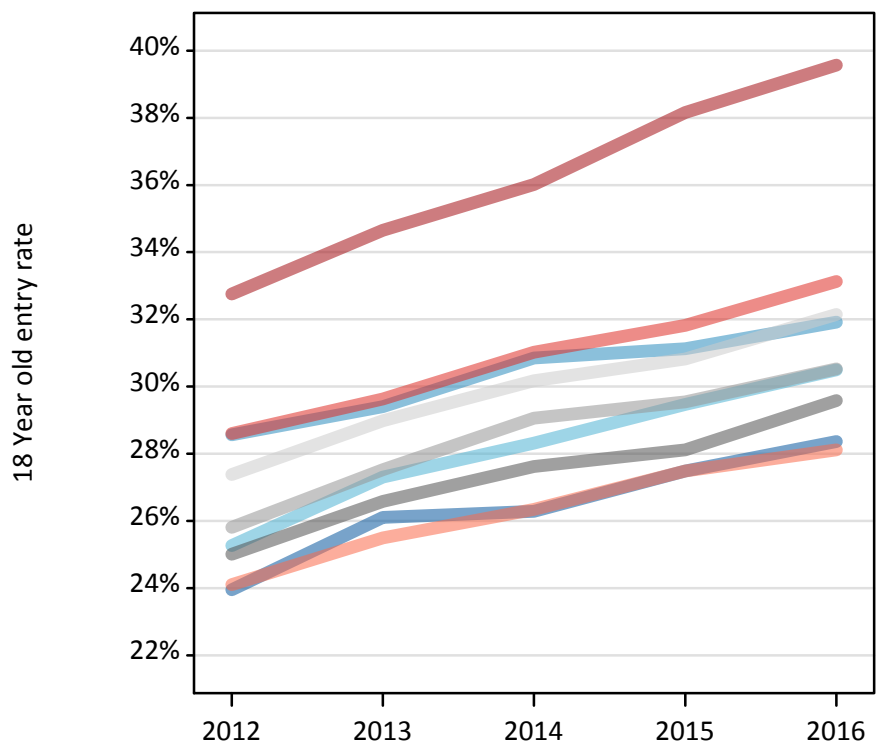
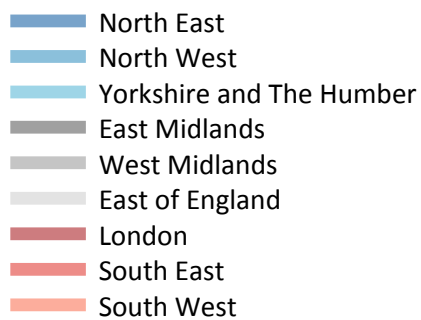
## R.8 Placed 18 year old applicants by region of domicile: 13 days after A level results day

Placed 18 year old applicants: absolute change relative to 2015 cycle totals

Applicant Status	Domicile	2012	2013	2014	2015	2016
Placed	North East	-890	-370	-490	0	-10
	North West	-1,990	-1,810	-1,000	0	-480
	Yorkshire and The Humber	-2,300	-1,570	-740	0	260
	East Midlands	-1,370	-750	-500	0	460
	West Midlands	-2,610	-1,740	-940	0	150
	East of England	-2,130	-1,330	-790	0	570
	London	-6,020	-4,070	-2,690	0	1,040
	South East	-3,230	-2,590	-1,740	0	1,120
	South West	-1,990	-1,510	-1,170	0	-140
	(England total)	-22,520	-15,720	-10,050	0	2,980
	Scotland	-340	-260	-90	0	240
	Northern Ireland	-220	290	90	0	150
	Wales	-800	-870	-470	0	100
	UK	-23,880	-16,550	-10,520	0	3,470

### R.9 Placed 18 year old applicants by region of domicile: 13 days after A level results day

Placed 18 year old applicants: entry rate



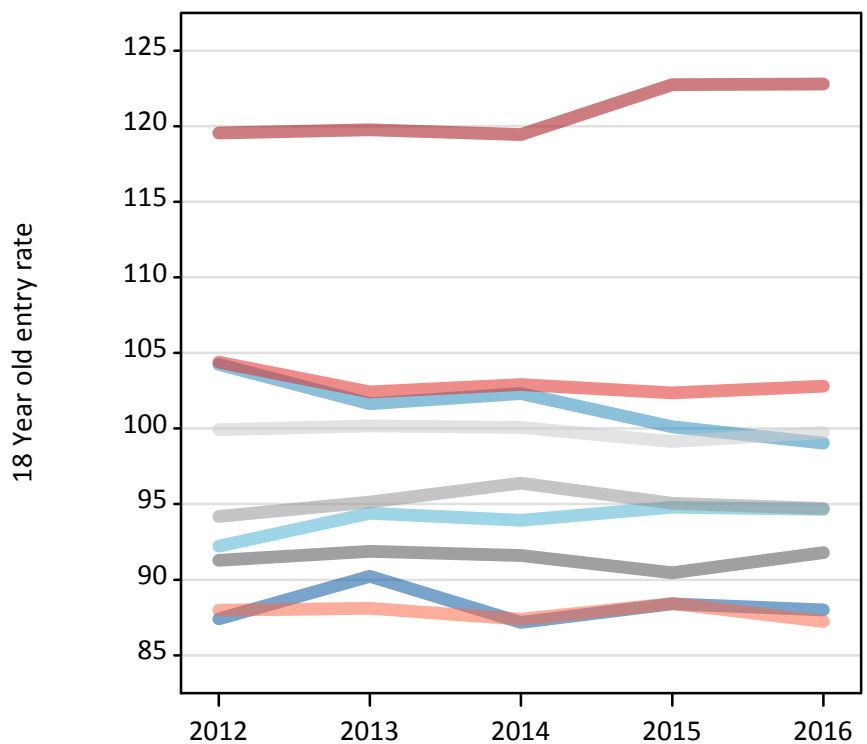
### R.10 Placed 18 year old applicants by region of domicile: 13 days after A level results day

Placed 18 year old applicants: entry rate

Applicant Status	Domicile	2012	2013	2014	2015	2016
Placed	North East	23.9%	26.1%	26.3%	27.5%	28.4%
	North West	28.6%	29.4%	30.8%	31.1%	31.9%
	Yorkshire and The Humber	25.3%	27.3%	28.3%	29.5%	30.5%
	East Midlands	25.0%	26.6%	27.6%	28.1%	29.6%
	West Midlands	25.8%	27.5%	29.1%	29.5%	30.5%
	East of England	27.4%	29.0%	30.2%	30.8%	32.1%
	London	32.8%	34.7%	36.0%	38.2%	39.6%
	South East	28.6%	29.6%	31.0%	31.8%	33.1%
	South West	24.1%	25.5%	26.3%	27.5%	28.1%
	(England total)	27.4%	28.9%	30.1%	31.1%	32.2%
	Scotland	22.7%	23.0%	23.3%	23.9%	24.9%
	Northern Ireland	32.6%	35.6%	35.1%	33.9%	35.0%
	Wales	25.2%	25.5%	26.7%	27.9%	29.2%
	UK	27.1%	28.5%	29.6%	30.5%	31.6%

### R.11 Placed 18 year old applicants by region of domicile: 13 days after A level results day

Placed 18 year old applicants: entry rates (indexed to 100 = England)



### R.12 Placed 18 year old applicants by region of domicile: 13 days after A level results day

Placed 18 year old applicants: entry rate (indexed to 100 = England)

Applicant Status	Domicile	2012	2013	2014	2015	2016
Placed	North East	87	90	87	88	88
	North West	104	102	102	100	99
	Yorkshire and The Humber	92	94	94	95	95
	East Midlands	91	92	92	90	92
	West Midlands	94	95	96	95	95
	East of England	100	100	100	99	100
	London	120	120	119	123	123
	South East	104	102	103	102	103
	South West	88	88	87	88	87
	(England total)	100	100	100	100	100