

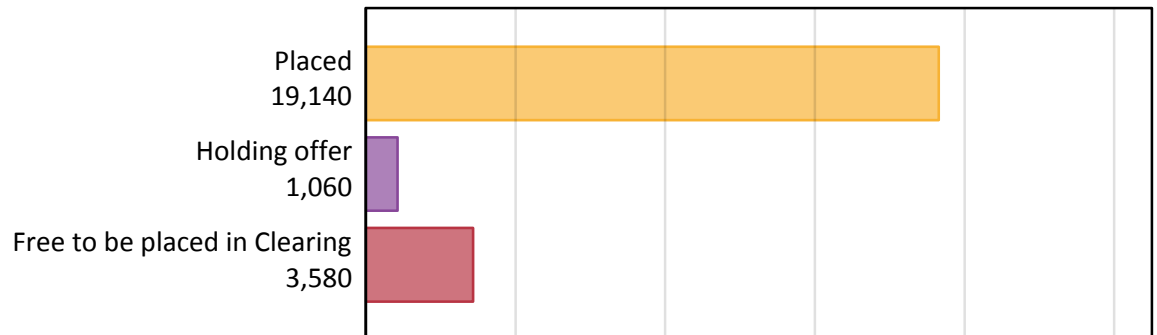
# Daily Clearing Analysis: Overview

Analysis at 00:05 on Tuesday 30 August 2016 (12 days after A level results day)

## A.1 Applicants by type and status from Wales, 2016 cycle

Applicant type	Status	2016
Main scheme	Placed (Clearing)	1,250
	Placed (Adjustment)	20
	Placed (Firm)	15,900
	Placed (Insurance)	1,110
	Placed (Other)	550
	Holding offer	1,060
	Free to be placed in Clearing	3,580
Direct to Clearing	Placed (Direct to Clearing)	320
	Other (Direct to Clearing)	250
All applicants	Placed	19,140

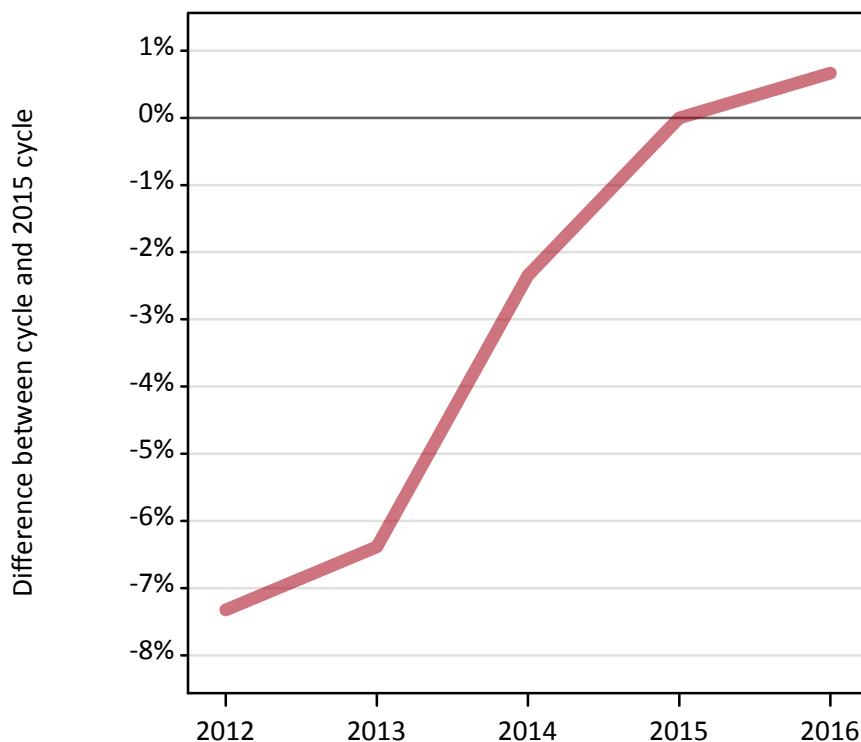
## A.2 Summary of applicants who are placed, holding offers or free to be placed in Clearing ( Wales )



### A.3 All placed applicants from Wales: 12 days after A level results day

All placed applicants: difference between cycle and 2015 cycle

Placed



### A.4 All placed applicants from Wales: 12 days after A level results day

All placed applicants: applicants at 12 days after A level results day

Applicant type	Status	2012	2013	2014	2015	2016
All applicants	Placed	17,620	17,800	18,570	19,010	19,140

### A.5 All placed applicants from Wales: 12 days after A level results day

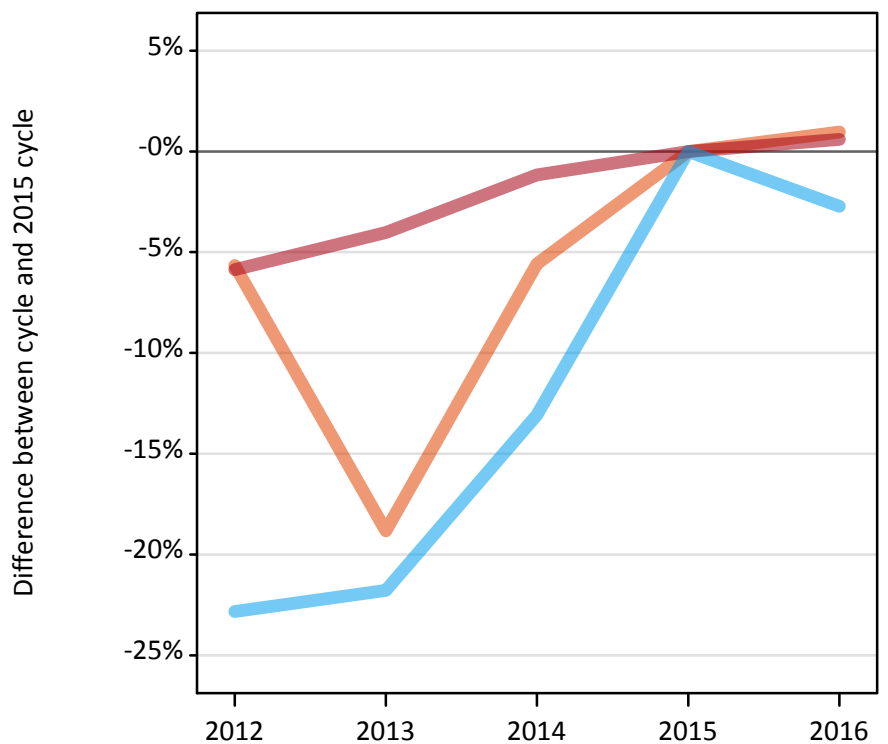
All placed applicants: difference between cycle and 2015 cycle

Applicant type	Status	2012	2013	2014	2015	2016
All applicants	Placed	-7%	-6%	-2%	0%	1%

### A.6 Placed main scheme applicants from Wales: 12 days after A level results day

Selected placed routes: difference between cycle and 2015 cycle

- Placed (Clearing)
- Placed (Firm)
- Placed (Insurance)



### A.7 Placed main scheme applicants from Wales: 12 days after A level results day

All Main scheme placed routes (excluding Adjustment): applicants at 12 days after A level results day

Applicant type	Status	2012	2013	2014	2015	2016
Main scheme	Placed (Clearing)	1,170	1,010	1,170	1,240	1,250
	Placed (Firm)	14,880	15,170	15,620	15,800	15,900
	Placed (Insurance)	880	890	990	1,140	1,110
	Placed (Other)	370	410	480	480	550

### A.8 Placed main scheme applicants from Wales: 12 days after A level results day

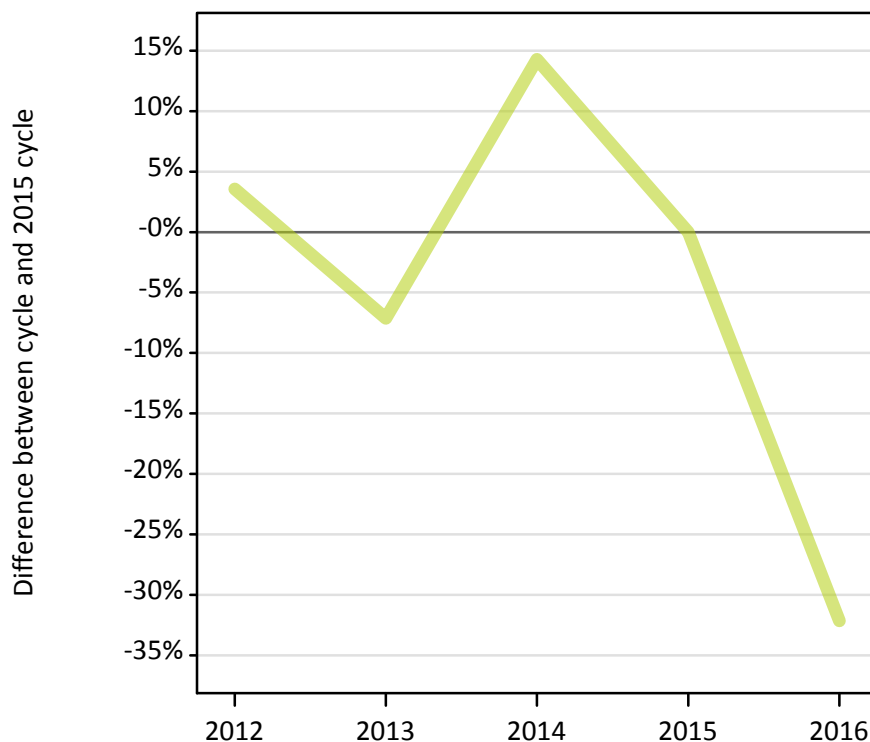
Selected placed routes: difference between cycle and 2015 cycle

Applicant type	Status	2012	2013	2014	2015	2016
Main scheme	Placed (Clearing)	-6%	-19%	-6%	0%	1%
	Placed (Firm)	-6%	-4%	-1%	0%	1%
	Placed (Insurance)	-23%	-22%	-13%	0%	-3%

### A.9 Main scheme applicants placed through adjustment: 12 days after A level results day

Placed through adjustment: difference between cycle and 2015 cycle

Placed (Adjustment)



### A.10 Main scheme applicants placed through adjustment: 12 days after A level results day

Placed through adjustment: applicants at 12 days after A level results day

Applicant type	Status	2012	2013	2014	2015	2016
Main scheme	Placed (Adjustment)	30	30	30	30	20

### A.11 Main scheme applicants placed through adjustment: 12 days after A level results day

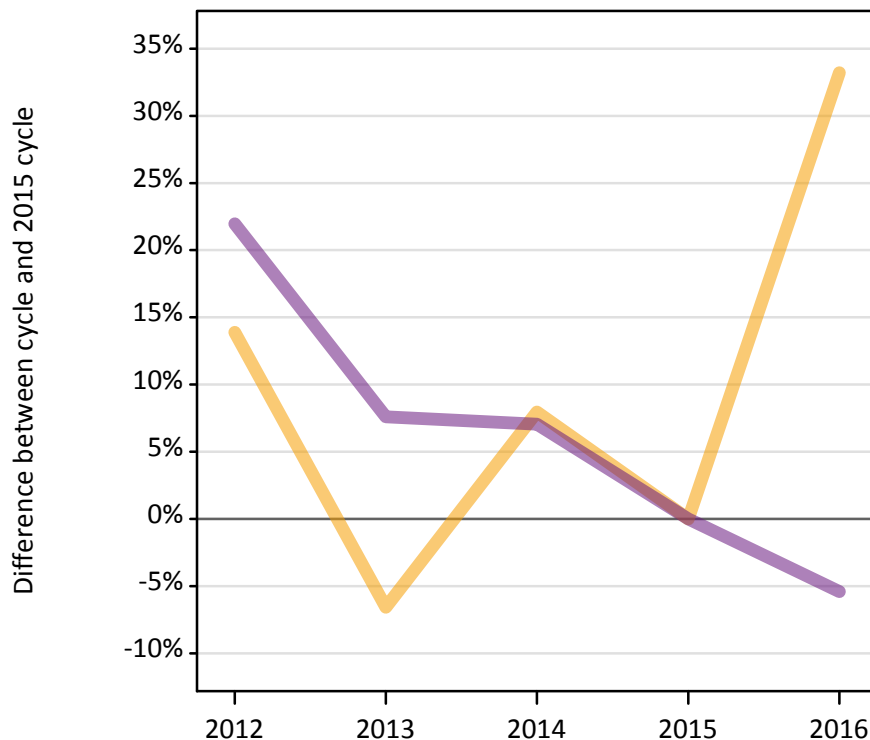
Placed through adjustment: difference between cycle and 2015 cycle

Applicant type	Status	2012	2013	2014	2015	2016
Main scheme	Placed (Adjustment)	4%	-7%	14%	0%	-32%

### A.12 Main scheme applicants not currently placed from Wales: 12 days after A level results day

Applicants in unplaced states: difference between cycle and 2015 cycle

— Holding offer  
— Free to be placed in Clearing



### A.13 Main scheme applicants not currently placed from Wales: 12 days after A level results day

Applicants in unplaced states: applicants at 12 days after A level results day

Applicant type	Status	2012	2013	2014	2015	2016
Main scheme	Holding offer	900	740	860	790	1,060
	Free to be placed in Clearing	4,620	4,080	4,050	3,790	3,580

### A.14 Main scheme applicants not currently placed from Wales: 12 days after A level results day

Applicants in unplaced states: difference between cycle and 2015 cycle

Applicant type	Status	2012	2013	2014	2015	2016
Main scheme	Holding offer	14%	-7%	8%	0%	33%
	Free to be placed in Clearing	22%	8%	7%	0%	-5%

### A.15 Direct to Clearing applicants from Wales: 12 days after A level results day

Placed (Direct to Clearing): difference between cycle and 2015 cycle

Placed (Direct to Clearing)



### A.16 Direct to Clearing applicants from Wales: 12 days after A level results day

Direct to Clearing 12 days after A level results day

Applicant type	Status	2012	2013	2014	2015	2016
Direct to Clearing	Placed (Direct to Clearing)	300	300	280	320	320
	Other (Direct to Clearing)	230	240	270	280	250

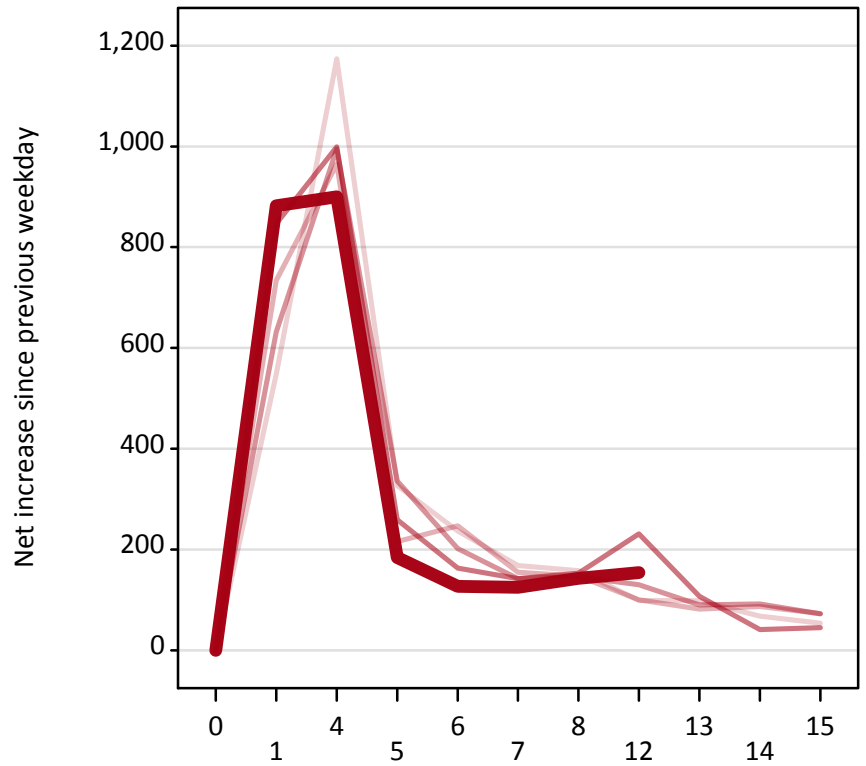
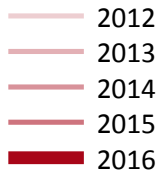
### A.17 Direct to Clearing applicants from Wales: 12 days after A level results day

Placed (Direct to Clearing): difference between cycle and 2015 cycle

Applicant type	Status	2012	2013	2014	2015	2016
Direct to Clearing	Placed (Direct to Clearing)	-7%	-8%	-12%	0%	-1%

### A.18 All Placed: Daily net change (from Wales)

Net increase since previous weekday (2016 cycle up to 12 days after A level results day)



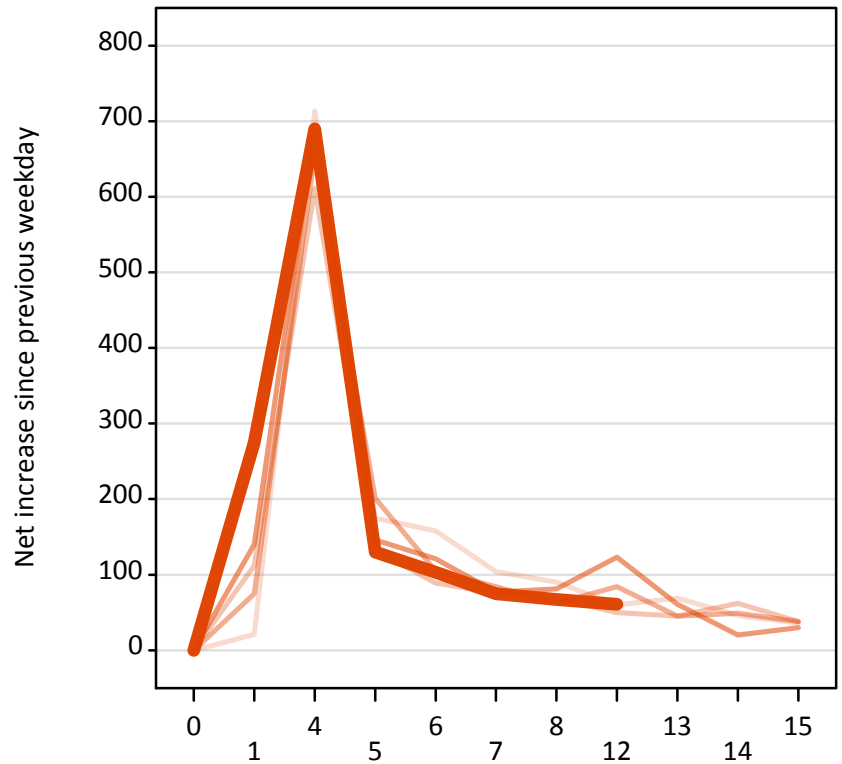
### A.19 All Placed: Daily net change (from Wales)

Net increase since previous weekday (2016 cycle up to 12 days after A level results day)

Applicant status, days since A level results day		2012	2013	2014	2015	2016
All Placed	0	0	0	0	0	0
	1	550	730	630	850	880
	4	1,170	970	1,000	1,000	900
	5	330	220	340	260	180
	6	240	250	200	160	130
	7	170	160	140	140	130
	8	160	150	150	150	140
	12	100	100	130	230	150
	13	100	80	90	110	
	14	70	90	90	40	
	15	50	70	70	50	

### A.20 Placed through Clearing only: Daily net change (from Wales)

Net increase since previous weekday (2016 cycle up to 12 days after A level results day)



### A.21 Placed through Clearing only: Daily net change (from Wales)

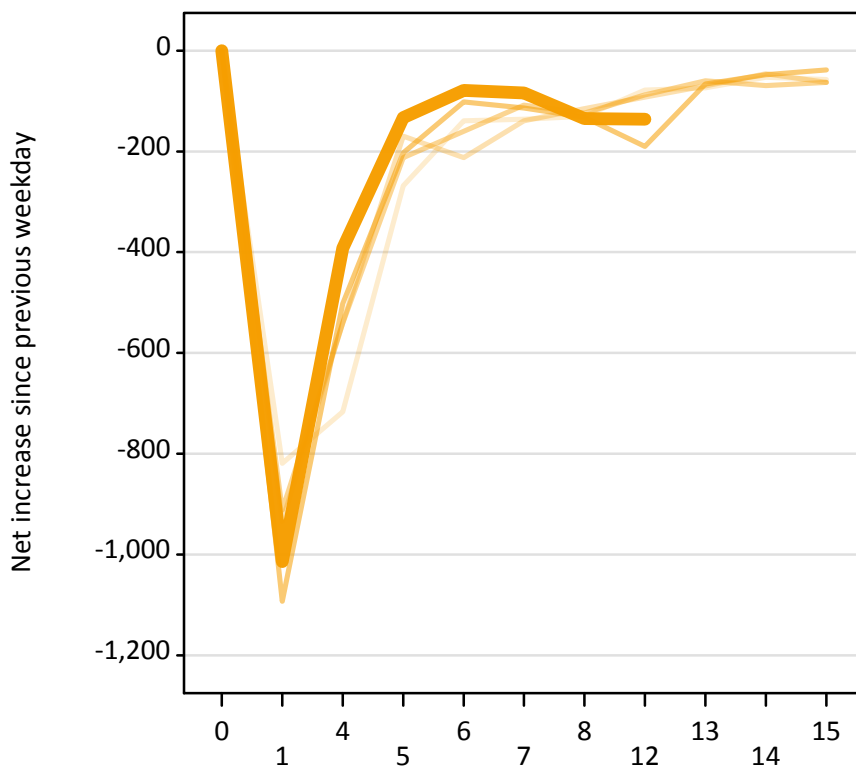
Net increase since previous weekday (2016 cycle up to 12 days after A level results day)

Applicant status, days since A level results day		2012	2013	2014	2015	2016
Placed through Clearing only	0	0	0	0	0	0
	1	20	110	80	140	280
	4	710	610	660	690	690
	5	180	130	200	150	130
	6	160	90	110	120	100
	7	100	80	80	80	80
	8	90	70	60	80	70
	12	60	50	80	120	60
	13	70	50	50	60	
	14	50	60	50	20	
	15	40	40	40	30	



### A.22 Holding Offer: Daily net change (from Wales)

Net increase since previous weekday (2016 cycle up to 12 days after A level results day)



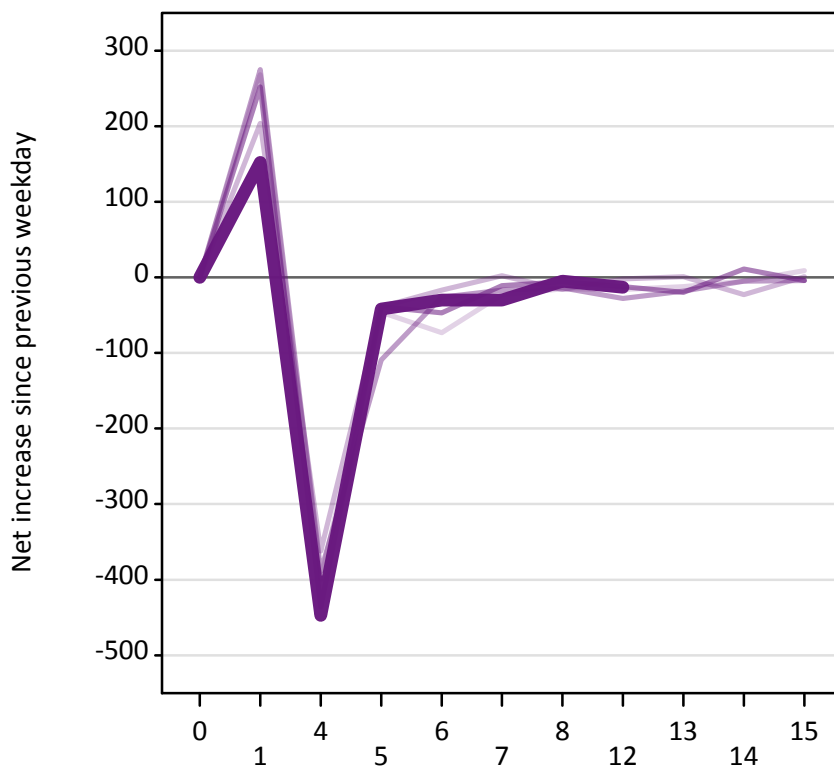
### A.23 Holding Offer: Daily net change (from Wales)

Net increase since previous weekday (2016 cycle up to 12 days after A level results day)

Applicant status, days since A level results day		2012	2013	2014	2015	2016
Holding Offer	0	0	0	0	0	0
	1	-820	-930	-910	-1,090	-1,010
	4	-720	-540	-540	-500	-390
	5	-270	-170	-210	-200	-130
	6	-140	-210	-160	-100	-80
	7	-140	-140	-110	-110	-80
	8	-130	-120	-120	-130	-140
	12	-80	-90	-90	-190	-140
	13	-70	-70	-60	-70	
	14	-50	-50	-70	-50	
	15	-60	-60	-60	-40	

### A.24 Free to be placed in Clearing: Daily net change (from Wales)

Net increase since previous weekday (2016 cycle up to 12 days after A level results day)



### A.25 Free to be placed in Clearing: Daily net change (from Wales)

Net increase since previous weekday (2016 cycle up to 12 days after A level results day)

Applicant status, days since A level results day		2012	2013	2014	2015	2016
Free to be placed in Clearing	0	0	0	0	0	0
	1	270	200	280	250	150
	4	-400	-360	-390	-440	-450
	5	-50	-40	-110	-40	-40
	6	-70	-20	-30	-50	-30
	7	-20	0	-20	-10	-30
	8	-20	-20	-10	-10	-10
	12	-20	0	-30	-10	-10
	13	-10	0	-20	-20	
	14	-10	-20	-10	10	
	15	10	0	0	0	