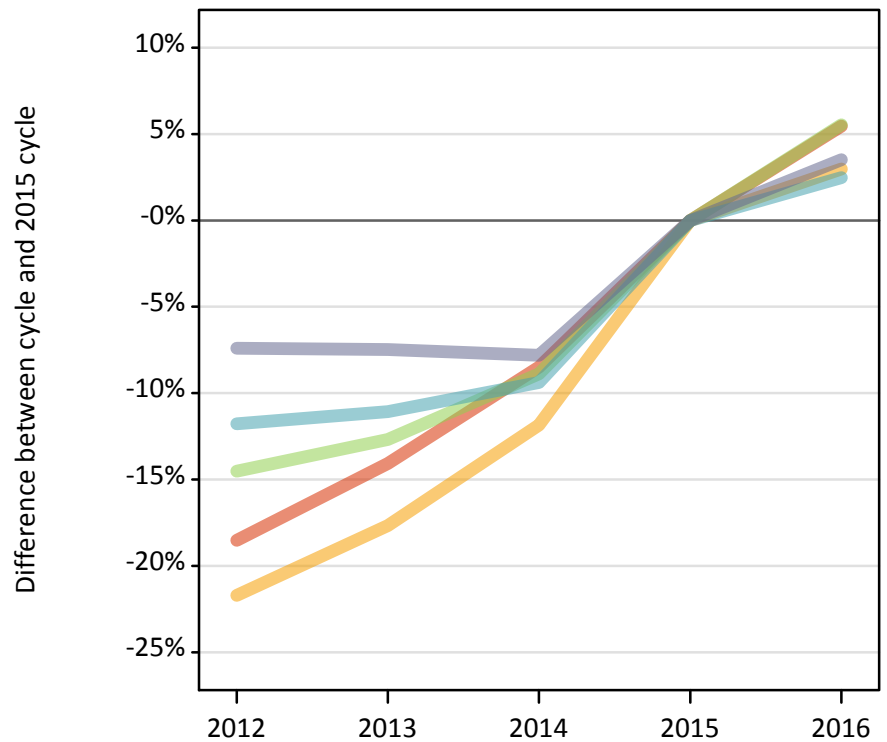


Analysis at 00:05 on Friday 26 August 2016 (8 days after A level results day)

J.1 Placed applicants from Scotland by SIMD quintile: 8 days after A level results day

Placed applicants: change relative to 2015 cycle totals

- Quintile 1
- Quintile 2
- Quintile 3
- Quintile 4
- Quintile 5



J.2 Placed applicants from Scotland by SIMD quintile: 8 days after A level results day

| Applicant Status | SIMD | 2012 | 2013 | 2014 | 2015 | 2016 |
|------------------|------------|-------|-------|-------|-------|-------|
| Placed | Quintile 1 | 3,480 | 3,670 | 3,910 | 4,270 | 4,510 |
| | Quintile 2 | 3,960 | 4,160 | 4,450 | 5,050 | 5,200 |
| | Quintile 3 | 5,140 | 5,250 | 5,480 | 6,010 | 6,350 |
| | Quintile 4 | 6,440 | 6,490 | 6,610 | 7,300 | 7,480 |
| | Quintile 5 | 8,420 | 8,410 | 8,380 | 9,090 | 9,410 |

J.3 Placed applicants from Scotland by SIMD quintile: 8 days after A level results day

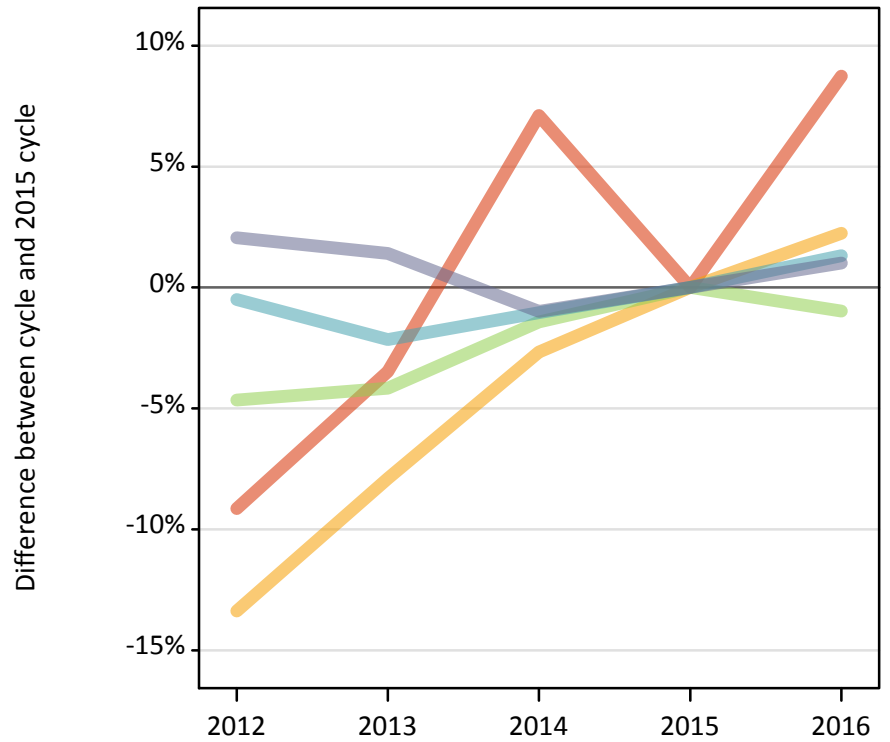
Placed applicants: change relative to 2015 cycle totals

| Applicant Status | SIMD | 2012 | 2013 | 2014 | 2015 | 2016 |
|------------------|------------|------|------|------|------|------|
| Placed | Quintile 1 | -19% | -14% | -8% | 0% | 5% |
| | Quintile 2 | -22% | -18% | -12% | 0% | 3% |
| | Quintile 3 | -15% | -13% | -9% | 0% | 6% |
| | Quintile 4 | -12% | -11% | -9% | 0% | 2% |
| | Quintile 5 | -7% | -7% | -8% | 0% | 4% |

J.4 Placed 18 year old applicants from Scotland by SIMD quintile: 8 days after A level results day

Placed 18 year old applicants: change relative to 2015 cycle totals

- Quintile 1
- Quintile 2
- Quintile 3
- Quintile 4
- Quintile 5



J.5 Placed 18 year old applicants from Scotland by SIMD quintile: 8 days after A level results day

| Applicant Status | SIMD | 2012 | 2013 | 2014 | 2015 | 2016 |
|------------------|------------|-------|-------|-------|-------|-------|
| Placed | Quintile 1 | 1,120 | 1,190 | 1,320 | 1,240 | 1,340 |
| | Quintile 2 | 1,660 | 1,760 | 1,860 | 1,910 | 1,960 |
| | Quintile 3 | 2,540 | 2,550 | 2,630 | 2,660 | 2,640 |
| | Quintile 4 | 3,560 | 3,500 | 3,540 | 3,580 | 3,630 |
| | Quintile 5 | 5,080 | 5,040 | 4,920 | 4,970 | 5,020 |

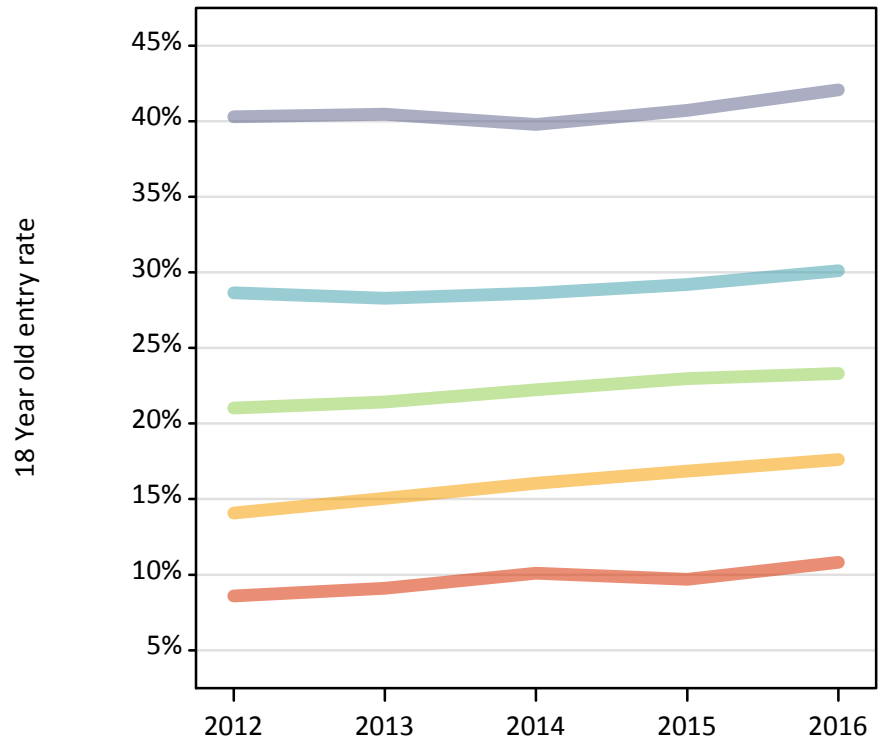
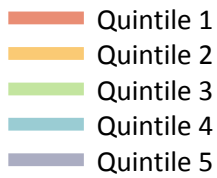
J.6 Placed 18 year old applicants from Scotland by SIMD quintile: 8 days after A level results day

Placed 18 year old applicants: change relative to 2015 cycle totals

| Applicant Status | SIMD | 2012 | 2013 | 2014 | 2015 | 2016 |
|------------------|------------|------|------|------|------|------|
| Placed | Quintile 1 | -9% | -3% | 7% | 0% | 9% |
| | Quintile 2 | -13% | -8% | -3% | 0% | 2% |
| | Quintile 3 | -5% | -4% | -1% | 0% | -1% |
| | Quintile 4 | -1% | -2% | -1% | 0% | 1% |
| | Quintile 5 | 2% | 1% | -1% | 0% | 1% |

J.7 Placed 18 year old applicants from Scotland by SIMD quintile: 8 days after A level results day

Placed 18 year old applicants: entry rate



J.8 Placed 18 year old applicants from Scotland by SIMD quintile: 8 days after A level results day

Placed 18 year old applicants: entry rate

| Applicant Status | SIMD | 2012 | 2013 | 2014 | 2015 | 2016 |
|------------------|------------|-------|-------|-------|-------|-------|
| Placed | Quintile 1 | 8.6% | 9.1% | 10.1% | 9.7% | 10.8% |
| | Quintile 2 | 14.1% | 15.0% | 16.0% | 16.9% | 17.6% |
| | Quintile 3 | 21.0% | 21.4% | 22.2% | 23.0% | 23.3% |
| | Quintile 4 | 28.7% | 28.3% | 28.6% | 29.2% | 30.1% |
| | Quintile 5 | 40.3% | 40.5% | 39.8% | 40.7% | 42.1% |

J.9 Placed 18 year old applicants from Scotland by SIMD quintile: 8 days after A level results day

Placed 18 year old applicants: entry rate (indexed to 100 = Quintile 1)

| Applicant Status | SIMD | 2012 | 2013 | 2014 | 2015 | 2016 |
|------------------|------------|------|------|------|------|------|
| Placed | Quintile 1 | 100 | 100 | 100 | 100 | 100 |
| | Quintile 2 | 164 | 165 | 159 | 174 | 163 |
| | Quintile 3 | 245 | 236 | 220 | 237 | 215 |
| | Quintile 4 | 333 | 311 | 283 | 301 | 278 |
| | Quintile 5 | 469 | 445 | 394 | 420 | 389 |