

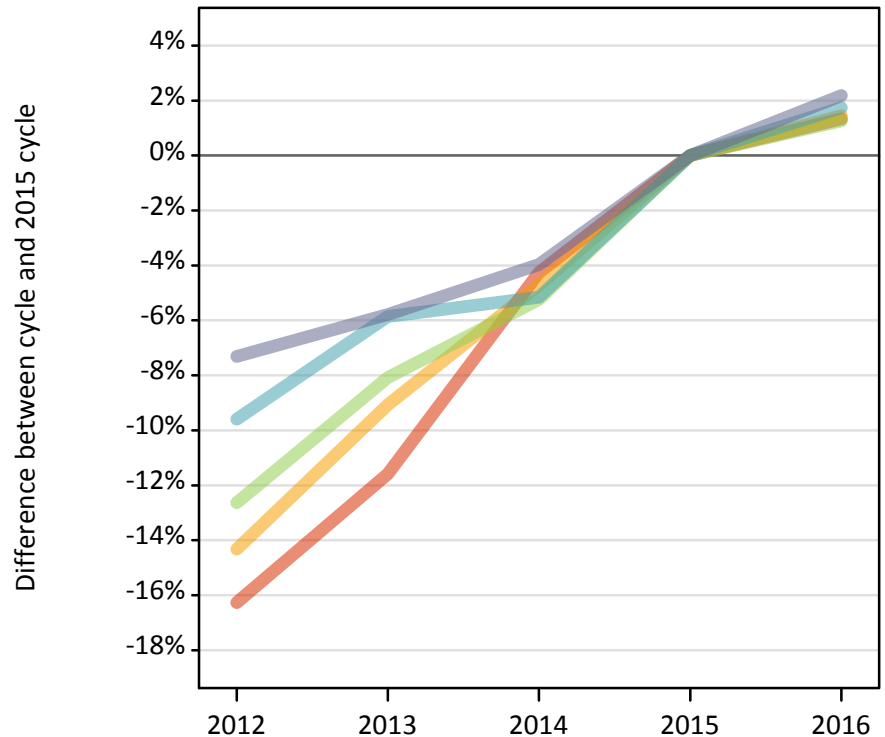
Daily Clearing Analysis: POLAR3

Analysis at 00:05 on Friday 26 August 2016 (8 days after A level results day)

P.1 Placed 18 year old applicants from England by POLAR3 quintile: 8 days after A level results day

Placed 18 year old applicants: change relative to 2015 cycle totals

- Quintile 1
- Quintile 2
- Quintile 3
- Quintile 4
- Quintile 5



P.2 Placed 18 year old applicants from England by POLAR3 quintile: 8 days after A level results day

Applicant Status	POLAR3	2012	2013	2014	2015	2016
Placed	Quintile 1	18,170	19,190	20,780	21,700	21,990
	Quintile 2	26,300	27,910	29,250	30,690	31,140
	Quintile 3	34,170	35,950	37,070	39,110	39,610
	Quintile 4	41,350	43,070	43,390	45,740	46,540
	Quintile 5	55,990	56,910	58,010	60,410	61,730

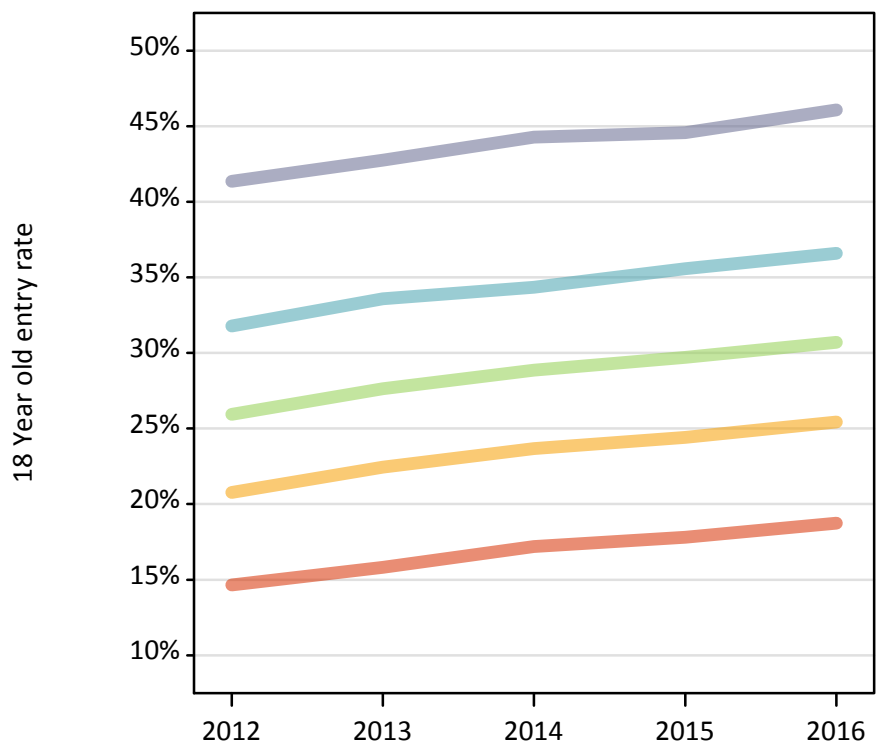
P.3 Placed 18 year old applicants from England by POLAR3 quintile: 8 days after A level results day

Placed 18 year old applicants: change relative to 2015 cycle totals

Applicant Status	POLAR3	2012	2013	2014	2015	2016
Placed	Quintile 1	-16%	-12%	-4%	0%	1%
	Quintile 2	-14%	-9%	-5%	0%	1%
	Quintile 3	-13%	-8%	-5%	0%	1%
	Quintile 4	-10%	-6%	-5%	0%	2%
	Quintile 5	-7%	-6%	-4%	0%	2%

P.4 Placed 18 year old applicants from England by POLAR3 quintile: 8 days after A level results day

Placed 18 year old applicants: entry rate



P.5 Placed 18 year old applicants from England by POLAR3 quintile: 8 days after A level results day

Placed 18 year old applicants: entry rate

Applicant Status	POLAR3	2012	2013	2014	2015	2016
Placed	Quintile 1	14.7%	15.8%	17.2%	17.8%	18.7%
	Quintile 2	20.8%	22.4%	23.7%	24.4%	25.4%
	Quintile 3	25.9%	27.6%	28.9%	29.7%	30.7%
	Quintile 4	31.8%	33.6%	34.4%	35.6%	36.6%
	Quintile 5	41.4%	42.8%	44.3%	44.6%	46.1%

P.6 Placed 18 year old applicants from England by POLAR3 quintile: 8 days after A level results day

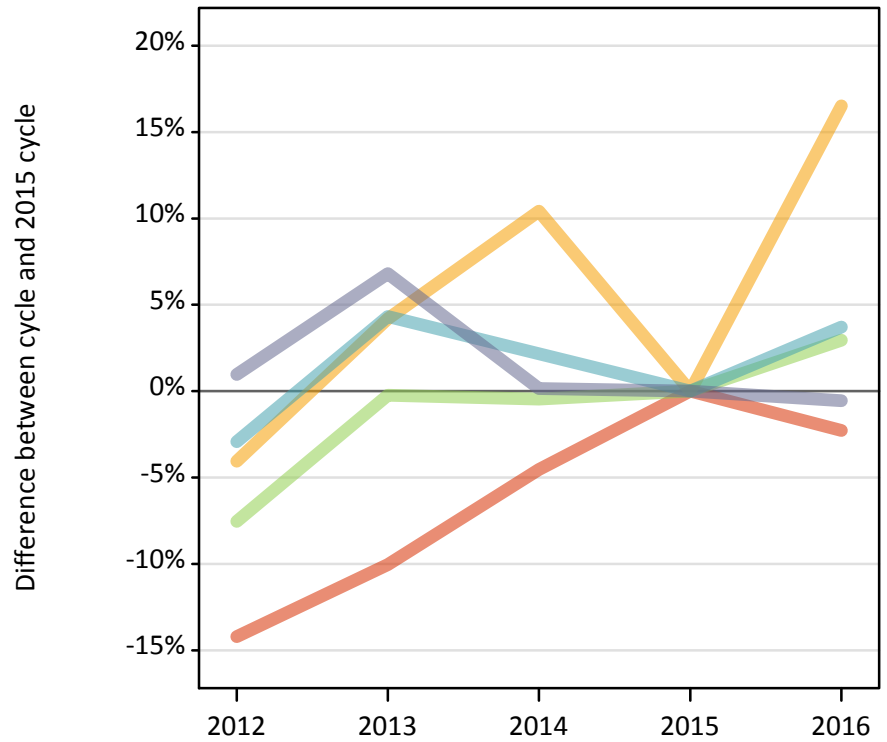
Placed 18 year old applicants: entry rate (indexed to 100 = Quintile 1)

Applicant Status	POLAR3	2012	2013	2014	2015	2016
Placed	Quintile 1	100	100	100	100	100
	Quintile 2	142	142	138	137	136
	Quintile 3	177	175	168	167	164
	Quintile 4	217	212	200	200	195
	Quintile 5	282	270	257	250	246

P.7 Placed 18 year old applicants from Northern Ireland by POLAR3 quintile: 8 days after A level results day

Placed 18 year old applicants: change relative to 2015 cycle totals

- Quintile 1
- Quintile 2
- Quintile 3
- Quintile 4
- Quintile 5



P.8 Placed 18 year old applicants from Northern Ireland by POLAR3 quintile: 8 days after A level results day

Applicant Status	POLAR3	2012	2013	2014	2015	2016
Placed	Quintile 1	450	480	500	530	520
	Quintile 2	710	770	820	740	860
	Quintile 3	1,190	1,280	1,280	1,290	1,330
	Quintile 4	2,380	2,560	2,510	2,460	2,550
	Quintile 5	3,250	3,430	3,220	3,220	3,200

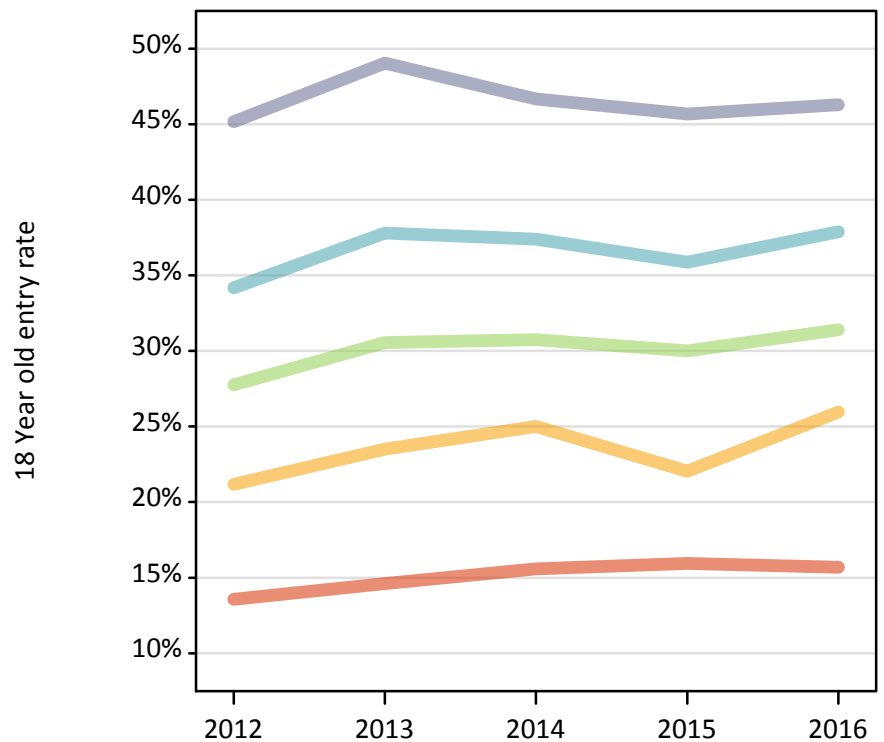
P.9 Placed 18 year old applicants from Northern Ireland by POLAR3 quintile: 8 days after A level results day

Placed 18 year old applicants: change relative to 2015 cycle totals

Applicant Status	POLAR3	2012	2013	2014	2015	2016
Placed	Quintile 1	-14%	-10%	-5%	0%	-2%
	Quintile 2	-4%	4%	10%	0%	17%
	Quintile 3	-8%	-0%	-0%	0%	3%
	Quintile 4	-3%	4%	2%	0%	4%
	Quintile 5	1%	7%	0%	0%	-1%

P.10 Placed 18 year old applicants from Northern Ireland by POLAR3 quintile: 8 days after A level results day

Placed 18 year old applicants: entry rate



P.11 Placed 18 year old applicants from Northern Ireland by POLAR3 quintile: 8 days after A level results day

Placed 18 year old applicants: entry rate

Applicant Status	POLAR3	2012	2013	2014	2015	2016
Placed	Quintile 1	13.6%	14.6%	15.6%	15.9%	15.7%
	Quintile 2	21.2%	23.5%	25.0%	22.1%	26.0%
	Quintile 3	27.8%	30.5%	30.7%	30.0%	31.4%
	Quintile 4	34.2%	37.8%	37.4%	35.9%	37.9%
	Quintile 5	45.2%	49.0%	46.7%	45.7%	46.3%

P.12 Placed 18 year old applicants from Northern Ireland by POLAR3 quintile: 8 days after A level results day

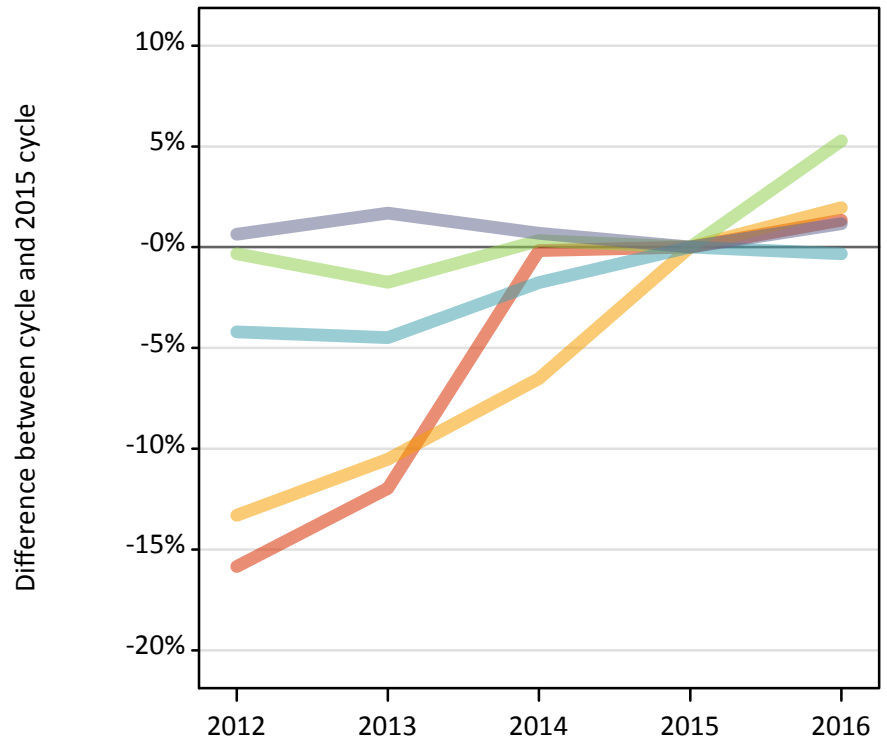
Placed 18 year old applicants: entry rate (indexed to 100 = Quintile 1)

Applicant Status	POLAR3	2012	2013	2014	2015	2016
Placed	Quintile 1	100	100	100	100	100
	Quintile 2	156	161	160	138	165
	Quintile 3	205	209	197	188	200
	Quintile 4	252	259	240	225	241
	Quintile 5	333	336	299	287	295

P.13 Placed 18 year old applicants from Scotland by POLAR3 quintile: 8 days after A level results day

Placed 18 year old applicants: change relative to 2015 cycle totals

- Quintile 1
- Quintile 2
- Quintile 3
- Quintile 4
- Quintile 5



P.14 Placed 18 year old applicants from Scotland by POLAR3 quintile: 8 days after A level results day

Applicant Status	POLAR3	2012	2013	2014	2015	2016
Placed	Quintile 1	500	520	590	590	600
	Quintile 2	1,280	1,320	1,380	1,470	1,500
	Quintile 3	2,170	2,140	2,190	2,180	2,300
	Quintile 4	3,290	3,280	3,370	3,430	3,420
	Quintile 5	6,730	6,800	6,730	6,690	6,760

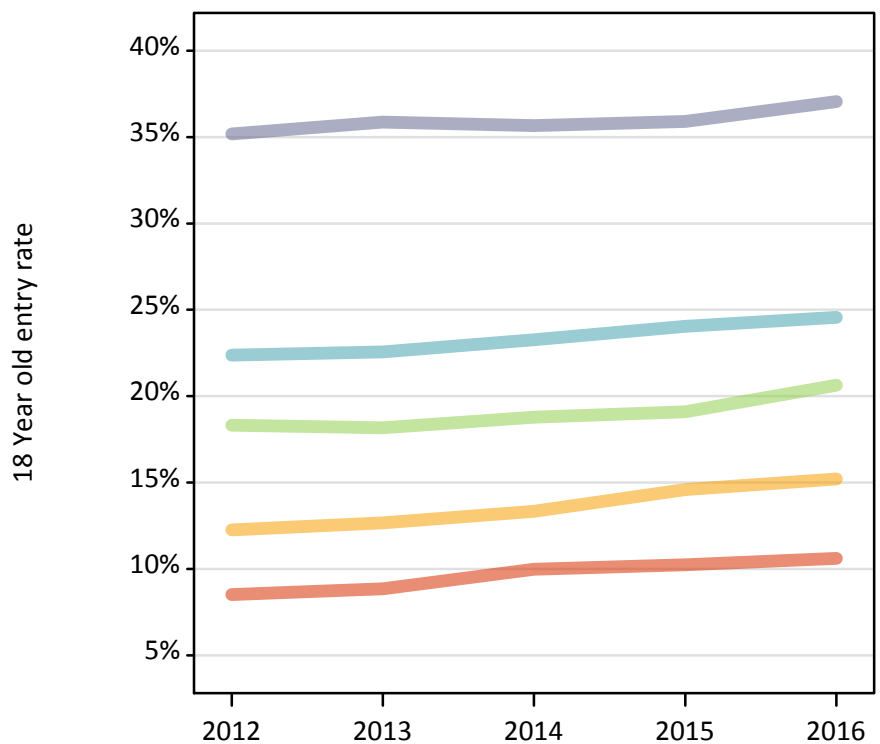
P.15 Placed 18 year old applicants from Scotland by POLAR3 quintile: 8 days after A level results day

Placed 18 year old applicants: change relative to 2015 cycle totals

Applicant Status	POLAR3	2012	2013	2014	2015	2016
Placed	Quintile 1	-16%	-12%	-0%	0%	1%
	Quintile 2	-13%	-11%	-7%	0%	2%
	Quintile 3	-0%	-2%	0%	0%	5%
	Quintile 4	-4%	-4%	-2%	0%	-0%
	Quintile 5	1%	2%	1%	0%	1%

P.16 Placed 18 year old applicants from Scotland by POLAR3 quintile: 8 days after A level results day

Placed 18 year old applicants: entry rate



P.17 Placed 18 year old applicants from Scotland by POLAR3 quintile: 8 days after A level results day

Placed 18 year old applicants: entry rate

Applicant Status	POLAR3	2012	2013	2014	2015	2016
Placed	Quintile 1	8.5%	8.8%	10.0%	10.2%	10.6%
	Quintile 2	12.3%	12.7%	13.3%	14.6%	15.2%
	Quintile 3	18.3%	18.2%	18.8%	19.1%	20.6%
	Quintile 4	22.4%	22.6%	23.3%	24.0%	24.6%
	Quintile 5	35.2%	35.9%	35.7%	35.9%	37.1%

P.18 Placed 18 year old applicants from Scotland by POLAR3 quintile: 8 days after A level results day

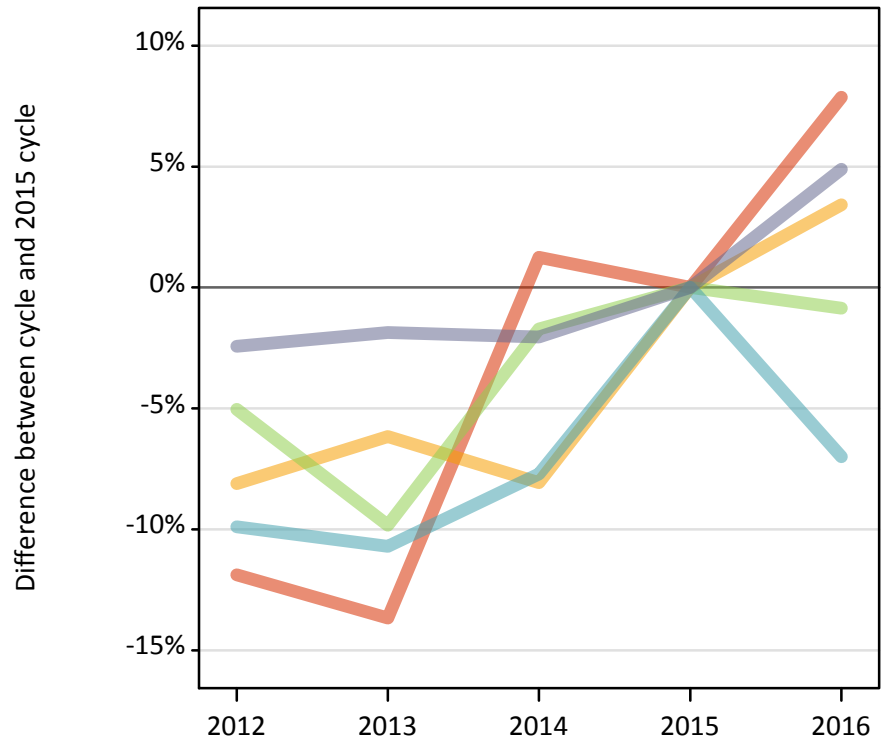
Placed 18 year old applicants: entry rate (indexed to 100 = Quintile 1)

Applicant Status	POLAR3	2012	2013	2014	2015	2016
Placed	Quintile 1	100	100	100	100	100
	Quintile 2	144	143	134	143	143
	Quintile 3	215	205	188	186	194
	Quintile 4	263	255	233	235	231
	Quintile 5	413	405	357	350	349

P.19 Placed 18 year old applicants from Wales by POLAR3 quintile: 8 days after A level results day

Placed 18 year old applicants: change relative to 2015 cycle totals

- Quintile 1
- Quintile 2
- Quintile 3
- Quintile 4
- Quintile 5



P.20 Placed 18 year old applicants from Wales by POLAR3 quintile: 8 days after A level results day

Applicant Status	POLAR3	2012	2013	2014	2015	2016
Placed	Quintile 1	1,280	1,250	1,470	1,450	1,560
	Quintile 2	1,940	1,980	1,940	2,110	2,180
	Quintile 3	1,660	1,580	1,720	1,750	1,730
	Quintile 4	2,140	2,120	2,190	2,370	2,210
	Quintile 5	2,620	2,630	2,630	2,680	2,810

P.21 Placed 18 year old applicants from Wales by POLAR3 quintile: 8 days after A level results day

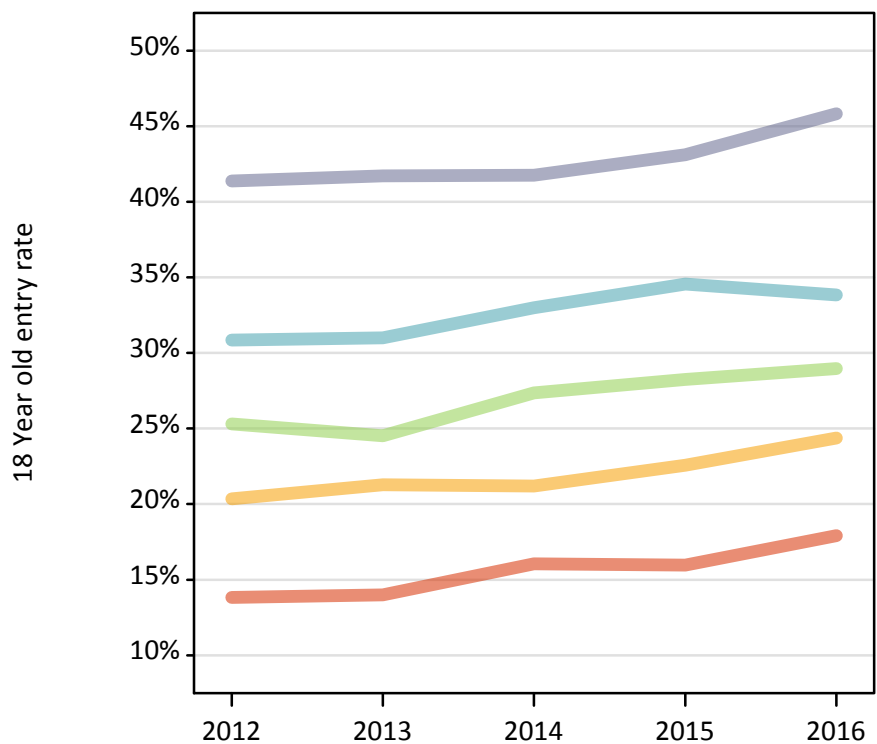
Placed 18 year old applicants: change relative to 2015 cycle totals

Applicant Status	POLAR3	2012	2013	2014	2015	2016
Placed	Quintile 1	-12%	-14%	1%	0%	8%
	Quintile 2	-8%	-6%	-8%	0%	3%
	Quintile 3	-5%	-10%	-2%	0%	-1%
	Quintile 4	-10%	-11%	-8%	0%	-7%
	Quintile 5	-2%	-2%	-2%	0%	5%

P.22 Placed 18 year old applicants from Wales by POLAR3 quintile: 8 days after A level results day

Placed 18 year old applicants: entry rate

- Quintile 1
- Quintile 2
- Quintile 3
- Quintile 4
- Quintile 5



P.23 Placed 18 year old applicants from Wales by POLAR3 quintile: 8 days after A level results day

Placed 18 year old applicants: entry rate

Applicant Status	POLAR3	2012	2013	2014	2015	2016
Placed	Quintile 1	13.8%	14.0%	16.0%	16.0%	17.9%
	Quintile 2	20.4%	21.3%	21.2%	22.6%	24.4%
	Quintile 3	25.3%	24.5%	27.4%	28.3%	29.0%
	Quintile 4	30.9%	31.0%	33.0%	34.6%	33.8%
	Quintile 5	41.4%	41.7%	41.8%	43.1%	45.8%

P.24 Placed 18 year old applicants from Wales by POLAR3 quintile: 8 days after A level results day

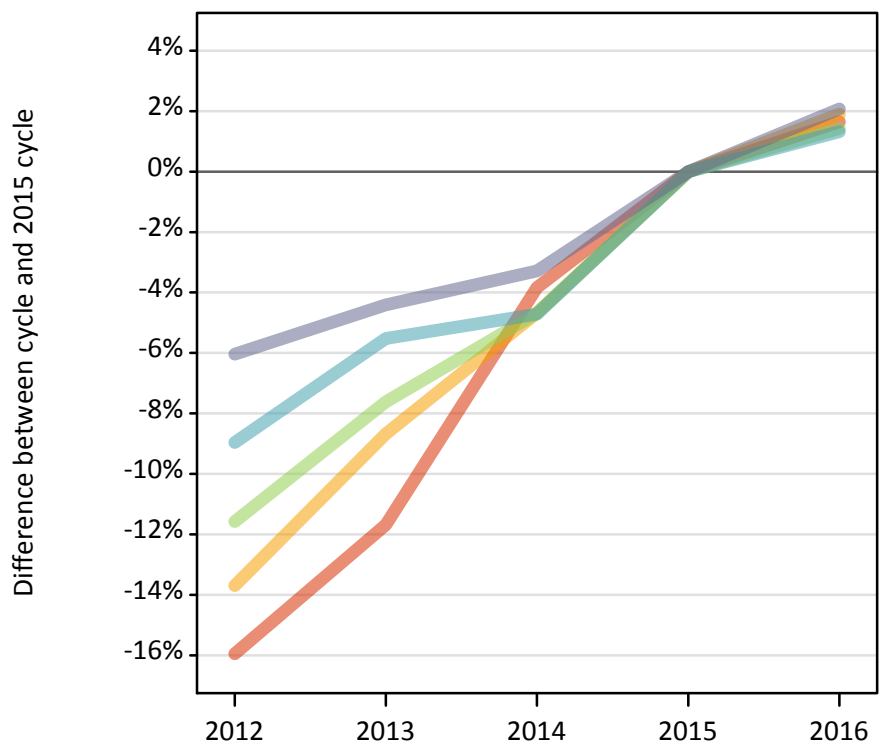
Placed 18 year old applicants: entry rate (indexed to 100 = Quintile 1)

Applicant Status	POLAR3	2012	2013	2014	2015	2016
Placed	Quintile 1	100	100	100	100	100
	Quintile 2	147	152	132	141	136
	Quintile 3	183	175	171	177	162
	Quintile 4	223	221	206	216	189
	Quintile 5	299	298	260	270	256

P.25 Placed 18 year old applicants from the UK by POLAR3 quintile: 8 days after A level results day

Placed 18 year old applicants: change relative to 2015 cycle totals

- Quintile 1
- Quintile 2
- Quintile 3
- Quintile 4
- Quintile 5



P.26 Placed 18 year old applicants from the UK by POLAR3 quintile: 8 days after A level results day

Applicant Status	POLAR3	2012	2013	2014	2015	2016
Placed	Quintile 1	20,400	21,440	23,340	24,270	24,670
	Quintile 2	30,220	31,980	33,380	35,020	35,680
	Quintile 3	39,200	40,950	42,250	44,330	44,960
	Quintile 4	49,160	51,020	51,450	54,000	54,720
	Quintile 5	68,580	69,770	70,590	72,990	74,500

P.27 Placed 18 year old applicants from the UK by POLAR3 quintile: 8 days after A level results day

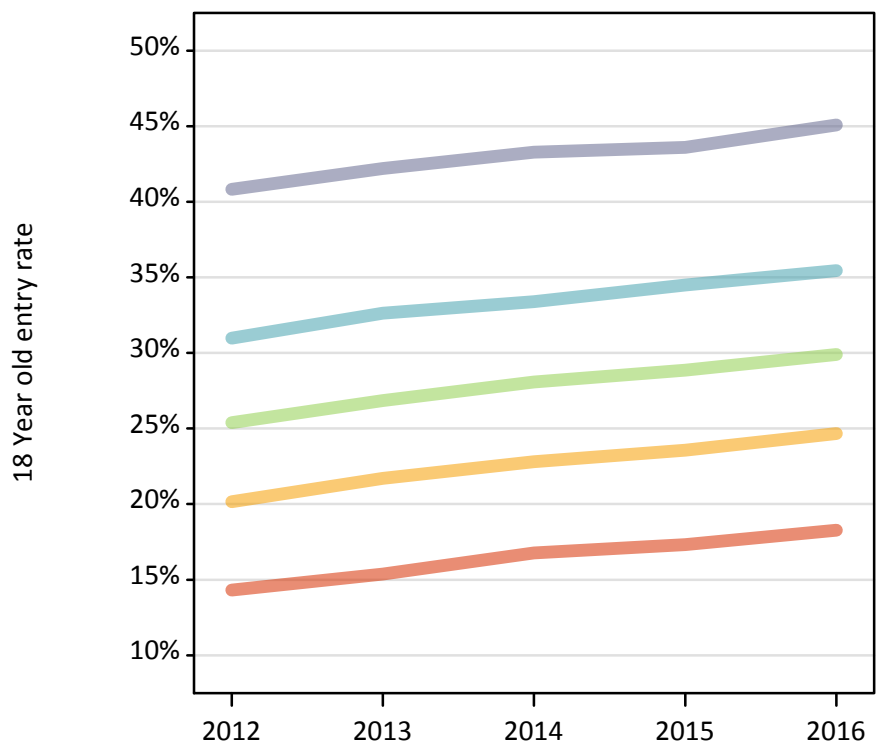
Placed 18 year old applicants: change relative to 2015 cycle totals

Applicant Status	POLAR3	2012	2013	2014	2015	2016
Placed	Quintile 1	-16%	-12%	-4%	0%	2%
	Quintile 2	-14%	-9%	-5%	0%	2%
	Quintile 3	-12%	-8%	-5%	0%	1%
	Quintile 4	-9%	-6%	-5%	0%	1%
	Quintile 5	-6%	-4%	-3%	0%	2%

P.28 Placed 18 year old applicants from the UK by POLAR3 quintile: 8 days after A level results day

Placed 18 year old applicants: entry rate

- Quintile 1
- Quintile 2
- Quintile 3
- Quintile 4
- Quintile 5



P.29 Placed 18 year old applicants from the UK by POLAR3 quintile: 8 days after A level results day

Placed 18 year old applicants: entry rate

Applicant Status	POLAR3	2012	2013	2014	2015	2016
Placed	Quintile 1	14.3%	15.4%	16.8%	17.3%	18.3%
	Quintile 2	20.2%	21.7%	22.8%	23.6%	24.7%
	Quintile 3	25.4%	26.9%	28.1%	28.9%	29.9%
	Quintile 4	31.0%	32.6%	33.4%	34.5%	35.4%
	Quintile 5	40.8%	42.2%	43.3%	43.6%	45.1%

P.30 Placed 18 year old applicants from the UK by POLAR3 quintile: 8 days after A level results day

Placed 18 year old applicants: entry rate (indexed to 100 = Quintile 1)

Applicant Status	POLAR3	2012	2013	2014	2015	2016
Placed	Quintile 1	100	100	100	100	100
	Quintile 2	141	141	136	136	135
	Quintile 3	177	175	167	167	164
	Quintile 4	216	212	199	199	194
	Quintile 5	285	274	258	252	247