

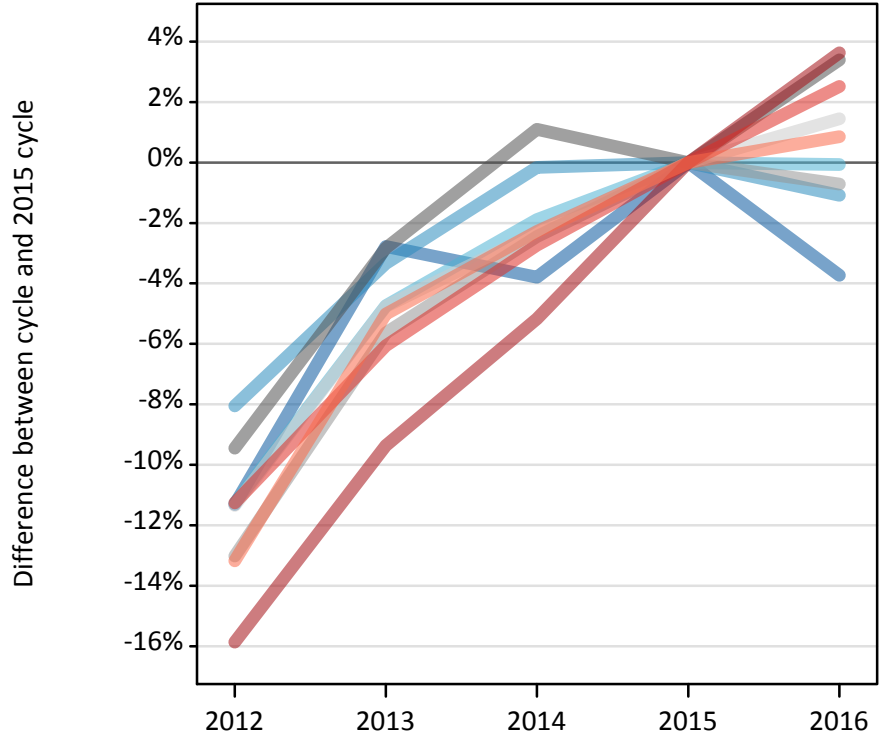
Daily Clearing Analysis: Region

Analysis at 00:05 on Friday 26 August 2016 (8 days after A level results day)

R.1 Placed applicants by region of domicile: 8 days after A level results day

Placed applicants: change relative to 2015 cycle totals

- North East
- North West
- Yorkshire and The Humber
- East Midlands
- West Midlands
- East of England
- London
- South East
- South West



R.2 Placed applicants by region of domicile: 8 days after A level results day

Applicant Status	Domicile	2012	2013	2014	2015	2016
Placed	North East	13,800	15,130	14,970	15,560	14,980
	North West	43,390	45,610	47,110	47,180	46,670
	Yorkshire and The Humber	29,140	31,280	32,210	32,830	32,810
	East Midlands	24,510	26,300	27,360	27,060	27,980
	West Midlands	33,140	35,950	37,170	38,100	37,830
	East of England	32,700	35,130	36,030	36,880	37,420
	London	56,700	61,080	63,900	67,390	69,830
	South East	51,170	54,170	56,080	57,660	59,110
	South West	28,530	31,220	32,110	32,860	33,140
	(England total)	313,060	335,850	346,940	355,540	359,780
	Scotland	27,580	28,090	28,910	31,830	33,140
	Northern Ireland	12,350	13,700	13,750	13,470	14,320
	Wales	17,520	17,700	18,440	18,780	18,990
	UK	370,520	395,340	408,040	419,620	426,220

R.3 Placed applicants by region of domicile: 8 days after A level results day

Placed applicants: change relative to 2015 cycle totals

Applicant Status	Domicile	2012	2013	2014	2015	2016
Placed	North East	-11%	-3%	-4%	0%	-4%
	North West	-8%	-3%	-0%	0%	-1%
	Yorkshire and The Humber	-11%	-5%	-2%	0%	-0%
	East Midlands	-9%	-3%	1%	0%	3%
	West Midlands	-13%	-6%	-2%	0%	-1%
	East of England	-11%	-5%	-2%	0%	1%
	London	-16%	-9%	-5%	0%	4%
	South East	-11%	-6%	-3%	0%	3%
	South West	-13%	-5%	-2%	0%	1%
	(England total)	-12%	-6%	-2%	0%	1%
	Scotland	-13%	-12%	-9%	0%	4%
	Northern Ireland	-8%	2%	2%	0%	6%
	Wales	-7%	-6%	-2%	0%	1%
	UK	-12%	-6%	-3%	0%	2%

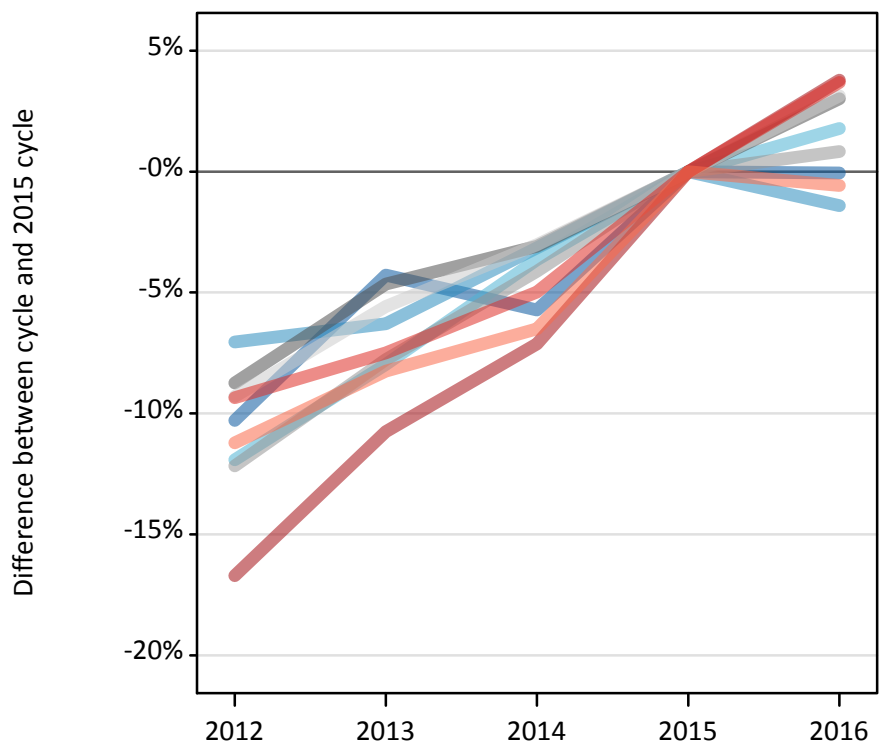
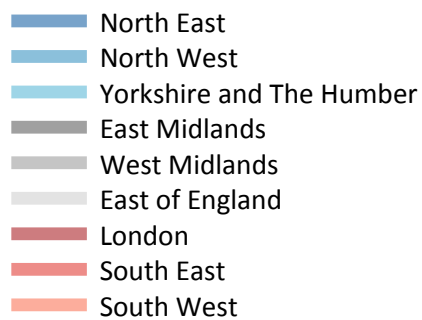
R.4 Placed applicants by region of domicile: 8 days after A level results day

Placed applicants: absolute change relative to 2015 cycle totals

Applicant Status	Domicile	2012	2013	2014	2015	2016
Placed	North East	-1,760	-430	-590	0	-580
	North West	-3,800	-1,580	-80	0	-510
	Yorkshire and The Humber	-3,700	-1,560	-620	0	-20
	East Midlands	-2,560	-770	300	0	920
	West Midlands	-4,960	-2,150	-930	0	-270
	East of England	-4,190	-1,760	-860	0	530
	London	-10,690	-6,310	-3,490	0	2,450
	South East	-6,490	-3,500	-1,580	0	1,450
	South West	-4,330	-1,650	-750	0	280
	(England total)	-42,480	-19,690	-8,600	0	4,240
	Scotland	-4,240	-3,740	-2,920	0	1,310
	Northern Ireland	-1,120	240	280	0	850
	Wales	-1,260	-1,080	-350	0	200
	UK	-49,100	-24,270	-11,580	0	6,600

R.5 Placed 18 year old applicants by region of domicile: 8 days after A level results day

Placed 18 year old applicants: change relative to 2015 cycle totals



R.6 Placed 18 year old applicants by region of domicile: 8 days after A level results day

Applicant Status	Domicile	2012	2013	2014	2015	2016
Placed	North East	7,500	8,000	7,880	8,360	8,360
	North West	25,010	25,210	26,050	26,900	26,520
	Yorkshire and The Humber	16,420	17,150	17,960	18,640	18,970
	East Midlands	14,130	14,760	15,000	15,480	15,950
	West Midlands	18,440	19,360	20,130	21,000	21,170
	East of England	19,960	20,780	21,350	22,010	22,700
	London	28,970	31,040	32,310	34,780	36,100
	South East	30,500	31,120	31,970	33,640	34,880
	South West	15,370	15,880	16,180	17,310	17,210
	(England total)	176,290	183,310	188,830	198,120	201,850
	Scotland	14,000	14,080	14,290	14,400	14,650
	Northern Ireland	7,990	8,540	8,340	8,240	8,470
	Wales	9,650	9,570	9,950	10,380	10,520
	UK	207,930	215,510	221,410	231,140	235,480

R.7 Placed 18 year old applicants by region of domicile: 8 days after A level results day

Placed 18 year old applicants: change relative to 2015 cycle totals

Applicant Status	Domicile	2012	2013	2014	2015	2016
Placed	North East	-10%	-4%	-6%	0%	-0%
	North West	-7%	-6%	-3%	0%	-1%
	Yorkshire and The Humber	-12%	-8%	-4%	0%	2%
	East Midlands	-9%	-5%	-3%	0%	3%
	West Midlands	-12%	-8%	-4%	0%	1%
	East of England	-9%	-6%	-3%	0%	3%
	London	-17%	-11%	-7%	0%	4%
	South East	-9%	-7%	-5%	0%	4%
	South West	-11%	-8%	-7%	0%	-1%
	(England total)	-11%	-7%	-5%	0%	2%
	Scotland	-3%	-2%	-1%	0%	2%
	Northern Ireland	-3%	4%	1%	0%	3%
	Wales	-7%	-8%	-4%	0%	1%
	UK	-10%	-7%	-4%	0%	2%

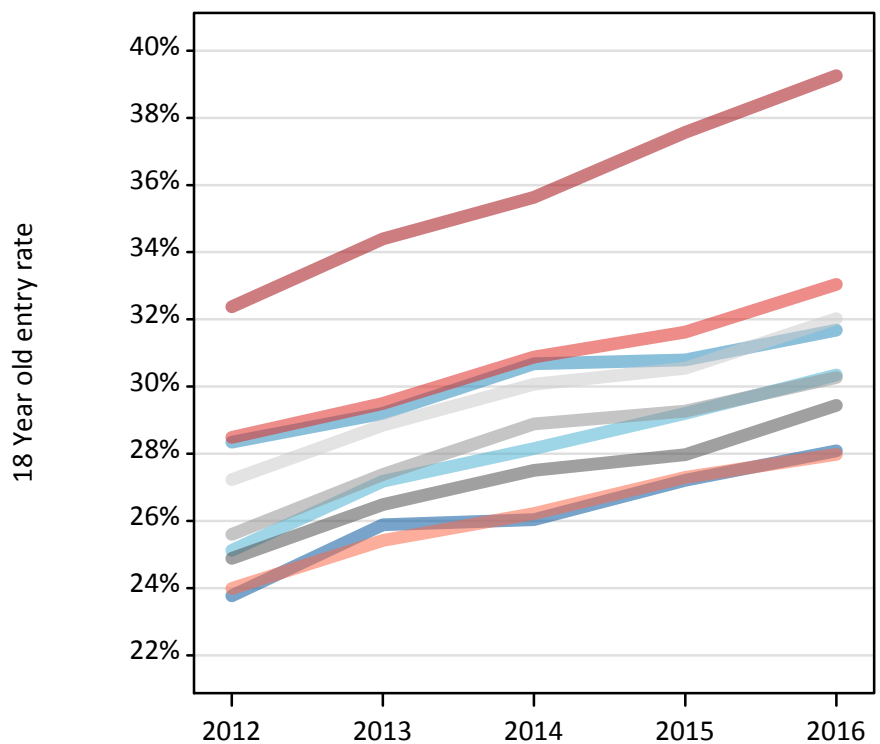
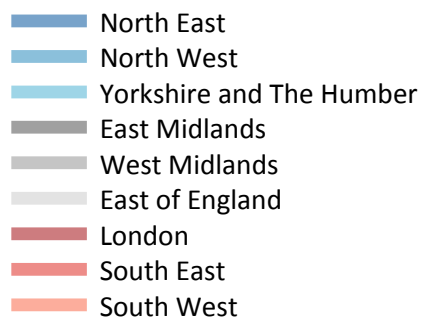
R.8 Placed 18 year old applicants by region of domicile: 8 days after A level results day

Placed 18 year old applicants: absolute change relative to 2015 cycle totals

Applicant Status	Domicile	2012	2013	2014	2015	2016
Placed	North East	-860	-360	-480	0	-10
	North West	-1,900	-1,690	-850	0	-380
	Yorkshire and The Humber	-2,220	-1,490	-680	0	330
	East Midlands	-1,350	-720	-480	0	470
	West Midlands	-2,560	-1,630	-860	0	180
	East of England	-2,050	-1,230	-660	0	690
	London	-5,810	-3,740	-2,480	0	1,310
	South East	-3,150	-2,520	-1,680	0	1,240
	South West	-1,940	-1,430	-1,130	0	-100
	(England total)	-21,830	-14,810	-9,290	0	3,730
	Scotland	-400	-320	-100	0	250
	Northern Ireland	-250	300	100	0	230
	Wales	-740	-810	-430	0	140
	UK	-23,210	-15,630	-9,730	0	4,350

R.9 Placed 18 year old applicants by region of domicile: 8 days after A level results day

Placed 18 year old applicants: entry rate



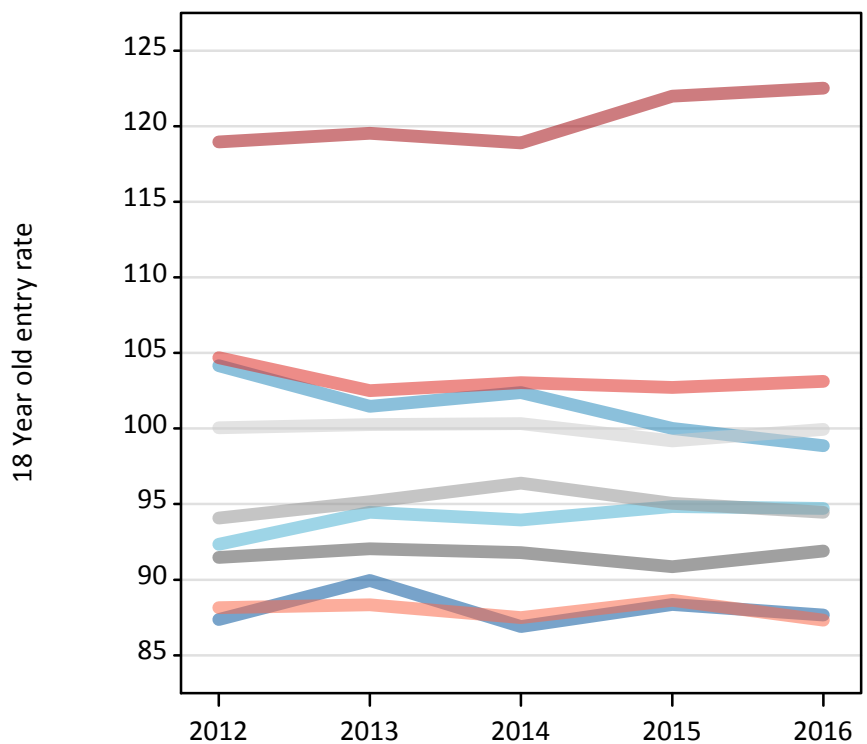
R.10 Placed 18 year old applicants by region of domicile: 8 days after A level results day

Placed 18 year old applicants: entry rate

Applicant Status	Domicile	2012	2013	2014	2015	2016
Placed	North East	23.8%	25.9%	26.0%	27.2%	28.1%
	North West	28.3%	29.2%	30.7%	30.8%	31.7%
	Yorkshire and The Humber	25.1%	27.2%	28.2%	29.2%	30.3%
	East Midlands	24.9%	26.5%	27.5%	28.0%	29.4%
	West Midlands	25.6%	27.4%	28.9%	29.3%	30.3%
	East of England	27.2%	28.8%	30.1%	30.5%	32.0%
	London	32.4%	34.4%	35.6%	37.6%	39.3%
	South East	28.5%	29.5%	30.9%	31.6%	33.0%
	South West	24.0%	25.4%	26.2%	27.3%	28.0%
	(England total)	27.2%	28.8%	30.0%	30.8%	32.0%
	Scotland	22.6%	22.9%	23.3%	23.9%	24.9%
	Northern Ireland	31.8%	34.8%	34.4%	33.2%	34.6%
	Wales	25.0%	25.3%	26.5%	27.6%	29.0%
	UK	26.9%	28.3%	29.4%	30.2%	31.4%

R.11 Placed 18 year old applicants by region of domicile: 8 days after A level results day

Placed 18 year old applicants: entry rates (indexed to 100 = England)



R.12 Placed 18 year old applicants by region of domicile: 8 days after A level results day

Placed 18 year old applicants: entry rate (indexed to 100 = England)

Applicant Status	Domicile	2012	2013	2014	2015	2016
Placed	North East	87	90	87	88	88
	North West	104	101	102	100	99
	Yorkshire and The Humber	92	94	94	95	95
	East Midlands	91	92	92	91	92
	West Midlands	94	95	96	95	94
	East of England	100	100	100	99	100
	London	119	120	119	122	123
	South East	105	103	103	103	103
	South West	88	88	87	89	87
	(England total)	100	100	100	100	100