

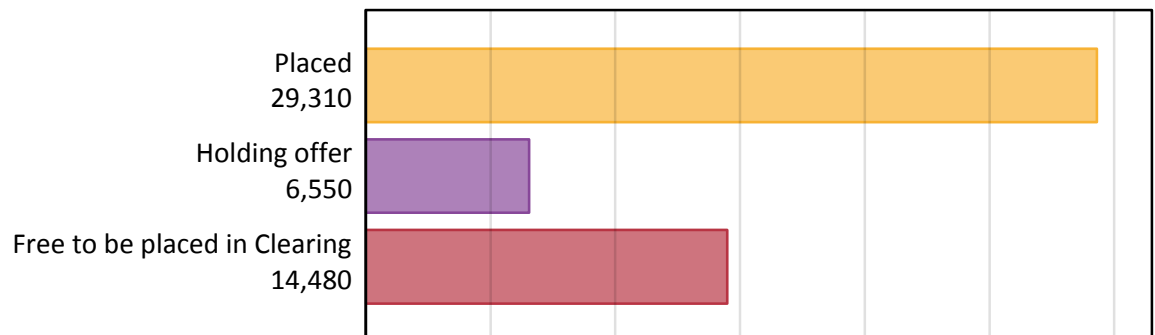
Daily Clearing Analysis: Overview

Analysis at 00:05 on Friday 26 August 2016 (8 days after A level results day)

A.1 Applicants by type and status from the EU - excluding UK, 2016 cycle

Applicant type	Status	2016
Main scheme	Placed (Clearing)	1,140
	Placed (Adjustment)	40
	Placed (Firm)	24,580
	Placed (Insurance)	2,100
	Placed (Other)	1,190
	Holding offer	6,550
	Free to be placed in Clearing	14,480
Direct to Clearing	Placed (Direct to Clearing)	260
	Other (Direct to Clearing)	330
All applicants	Placed	29,310

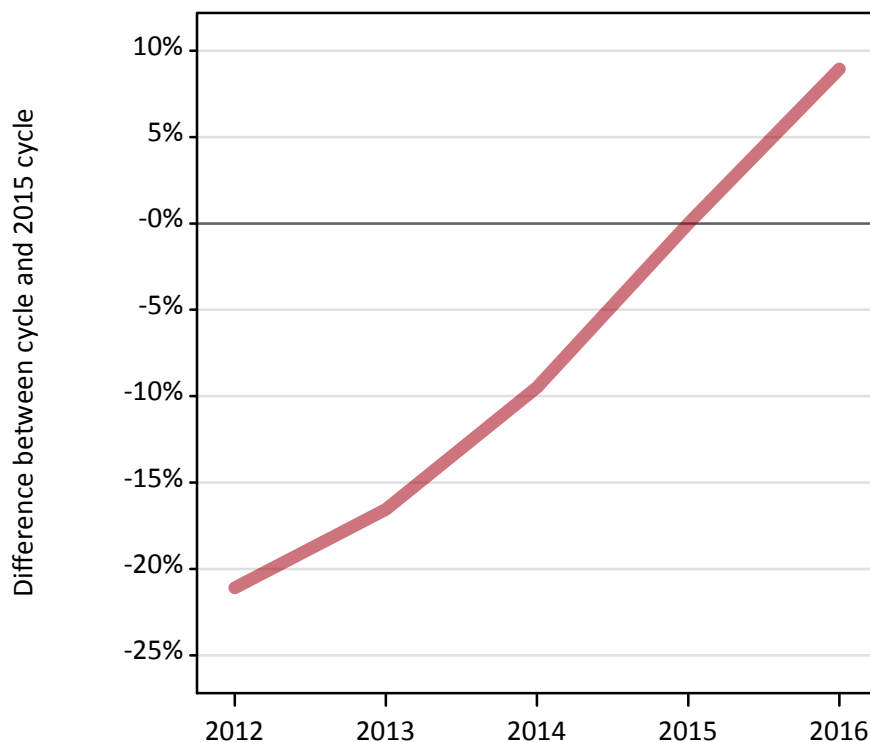
A.2 Summary of applicants who are placed, holding offers or free to be placed in Clearing (the EU - excluding UK)



A.3 All placed applicants from the EU - excluding UK: 8 days after A level results day

All placed applicants: difference between cycle and 2015 cycle

Placed



A.4 All placed applicants from the EU - excluding UK: 8 days after A level results day

All placed applicants: applicants at 8 days after A level results day

Applicant type	Status	2012	2013	2014	2015	2016
All applicants	Placed	21,230	22,450	24,340	26,900	29,310

A.5 All placed applicants from the EU - excluding UK: 8 days after A level results day

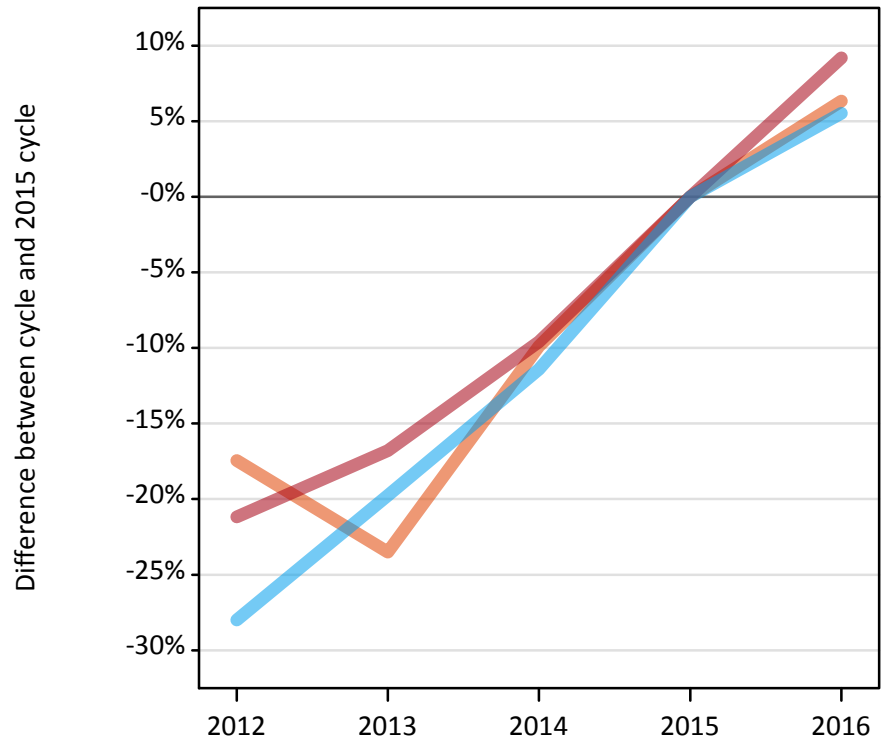
All placed applicants: difference between cycle and 2015 cycle

Applicant type	Status	2012	2013	2014	2015	2016
All applicants	Placed	-21%	-17%	-9%	0%	9%

A.6 Placed main scheme applicants from the EU - excluding UK: 8 days after A level results day

Selected placed routes: difference between cycle and 2015 cycle

- Placed (Clearing)
- Placed (Firm)
- Placed (Insurance)



A.7 Placed main scheme applicants from the EU - excluding UK: 8 days after A level results day

All Main scheme placed routes (excluding Adjustment): applicants at 8 days after A level results day

Applicant type	Status	2012	2013	2014	2015	2016
Main scheme	Placed (Clearing)	890	820	970	1,070	1,140
	Placed (Firm)	17,740	18,730	20,350	22,510	24,580
	Placed (Insurance)	1,430	1,600	1,760	1,990	2,100
	Placed (Other)	900	1,020	1,000	1,020	1,190

A.8 Placed main scheme applicants from the EU - excluding UK: 8 days after A level results day

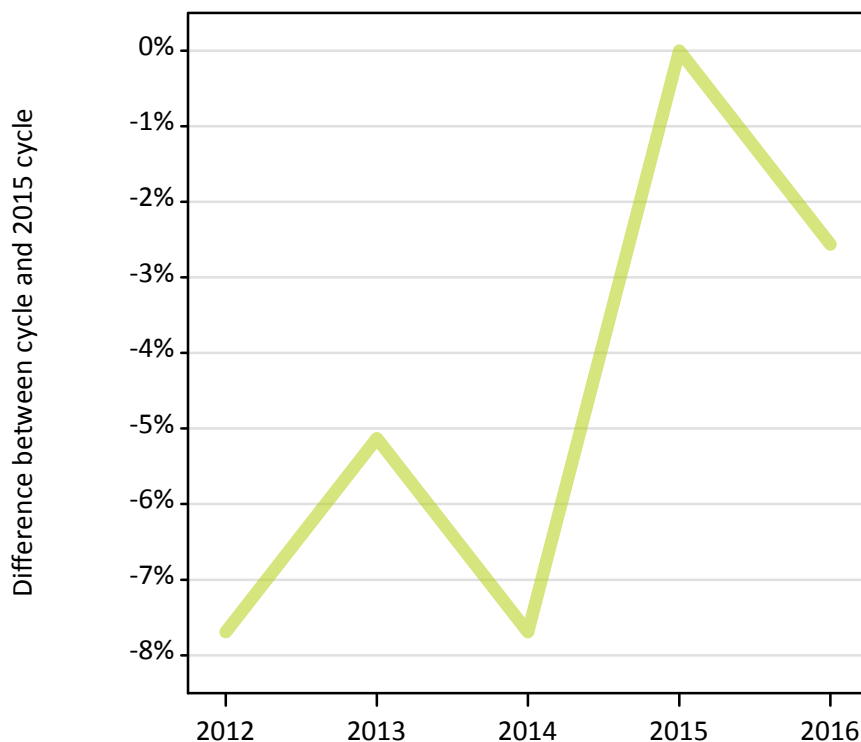
Selected placed routes: difference between cycle and 2015 cycle

Applicant type	Status	2012	2013	2014	2015	2016
Main scheme	Placed (Clearing)	-17%	-24%	-10%	0%	6%
	Placed (Firm)	-21%	-17%	-10%	0%	9%
	Placed (Insurance)	-28%	-20%	-11%	0%	6%

A.9 Main scheme applicants placed through adjustment: 8 days after A level results day

Placed through adjustment: difference between cycle and 2015 cycle

Placed (Adjustment)



A.10 Main scheme applicants placed through adjustment: 8 days after A level results day

Placed through adjustment: applicants at 8 days after A level results day

Applicant type	Status	2012	2013	2014	2015	2016
Main scheme	Placed (Adjustment)	40	40	40	40	40

A.11 Main scheme applicants placed through adjustment: 8 days after A level results day

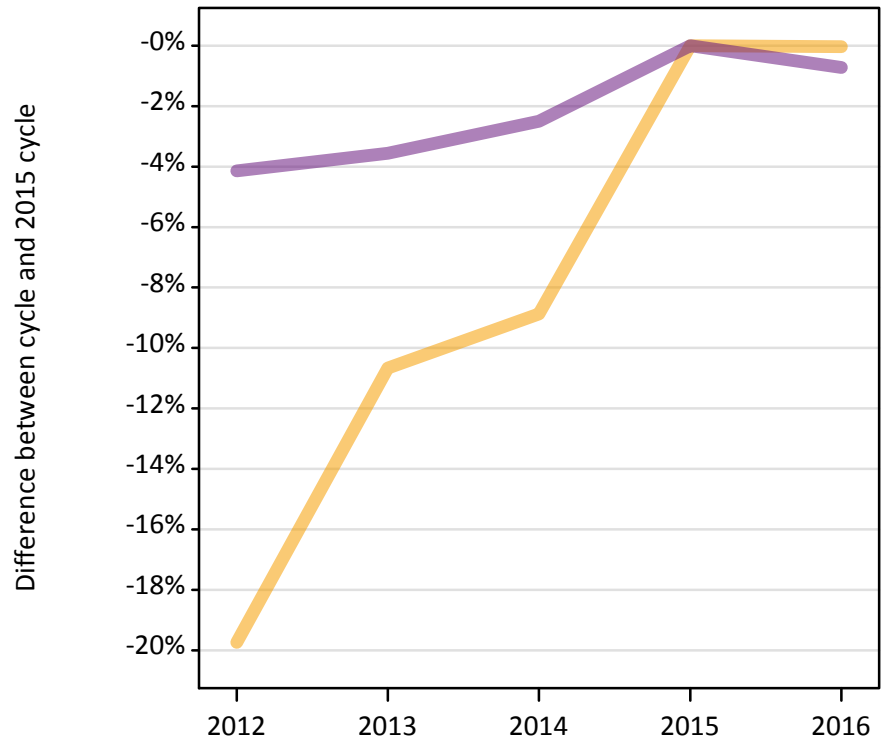
Placed through adjustment: difference between cycle and 2015 cycle

Applicant type	Status	2012	2013	2014	2015	2016
Main scheme	Placed (Adjustment)	-8%	-5%	-8%	0%	-3%

A.12 Main scheme applicants not currently placed from the EU - excluding UK: 8 days after A level results day

Applicants in unplaced states: difference between cycle and 2015 cycle

— Holding offer
— Free to be placed in Clearing



A.13 Main scheme applicants not currently placed from the EU - excluding UK: 8 days after A level results day

Applicants in unplaced states: applicants at 8 days after A level results day

Applicant type	Status	2012	2013	2014	2015	2016
Main scheme	Holding offer	5,260	5,850	5,970	6,550	6,550
	Free to be placed in Clearing	13,980	14,070	14,220	14,590	14,480

A.14 Main scheme applicants not currently placed from the EU - excluding UK: 8 days after A level results day

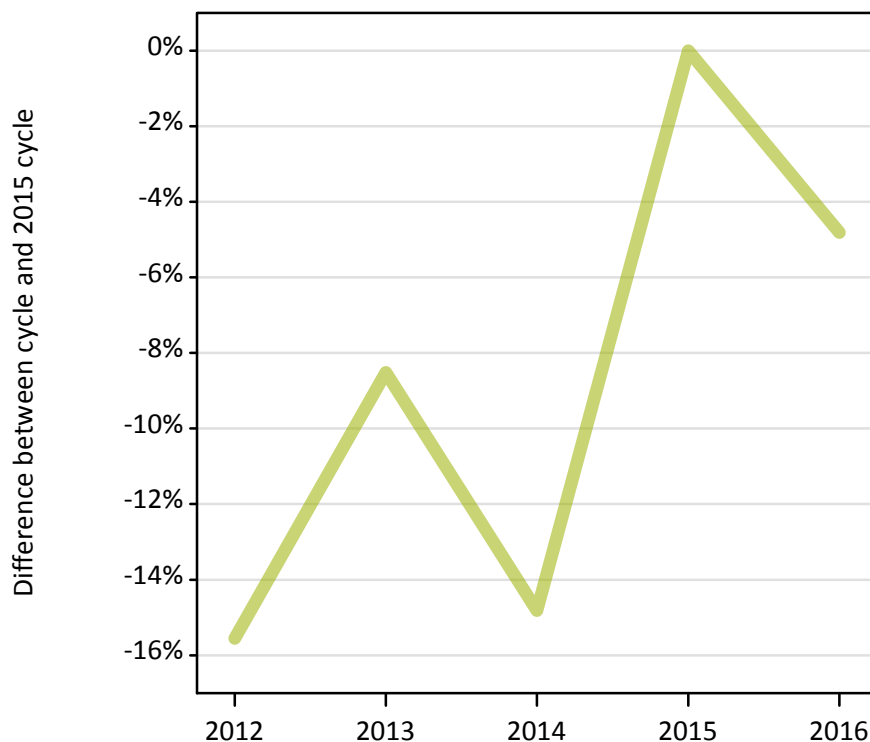
Applicants in unplaced states: difference between cycle and 2015 cycle

Applicant type	Status	2012	2013	2014	2015	2016
Main scheme	Holding offer	-20%	-11%	-9%	0%	-0%
	Free to be placed in Clearing	-4%	-4%	-3%	0%	-1%

A.15 Direct to Clearing applicants from the EU - excluding UK: 8 days after A level results day

Placed (Direct to Clearing): difference between cycle and 2015 cycle

Placed (Direct to Clearing)



A.16 Direct to Clearing applicants from the EU - excluding UK: 8 days after A level results day

Direct to Clearing 8 days after A level results day

Applicant type	Status	2012	2013	2014	2015	2016
Direct to Clearing	Placed (Direct to Clearing)	230	250	230	270	260
	Other (Direct to Clearing)	370	360	360	370	330

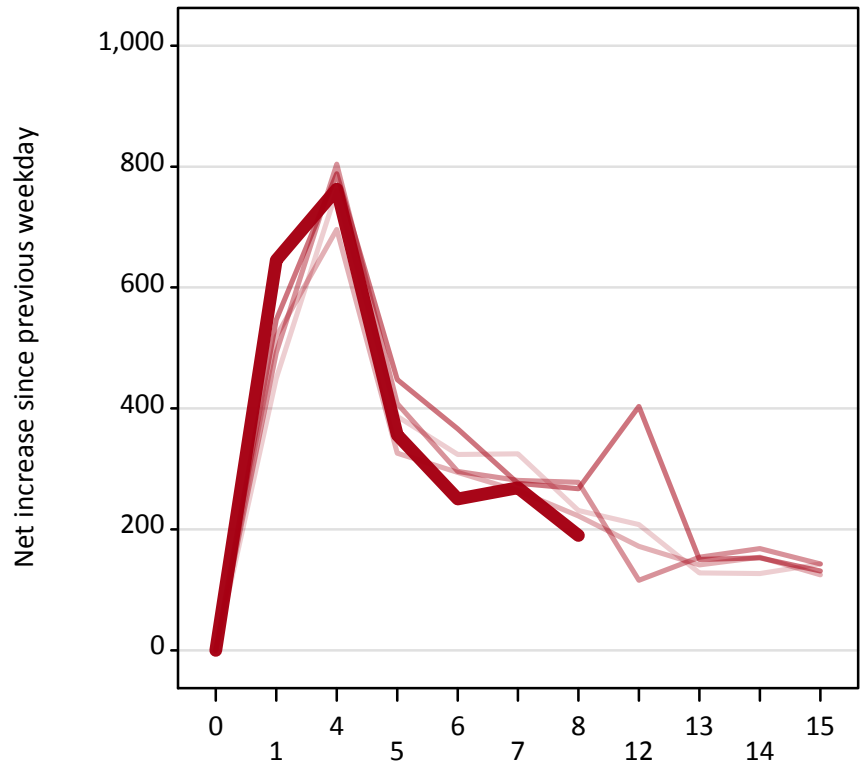
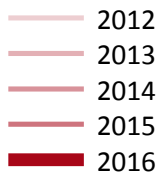
A.17 Direct to Clearing applicants from the EU - excluding UK: 8 days after A level results day

Placed (Direct to Clearing): difference between cycle and 2015 cycle

Applicant type	Status	2012	2013	2014	2015	2016
Direct to Clearing	Placed (Direct to Clearing)	-16%	-9%	-15%	0%	-5%

A.18 All Placed: Daily net change (from the EU - excluding UK)

Net increase since previous weekday (2016 cycle up to 8 days after A level results day)



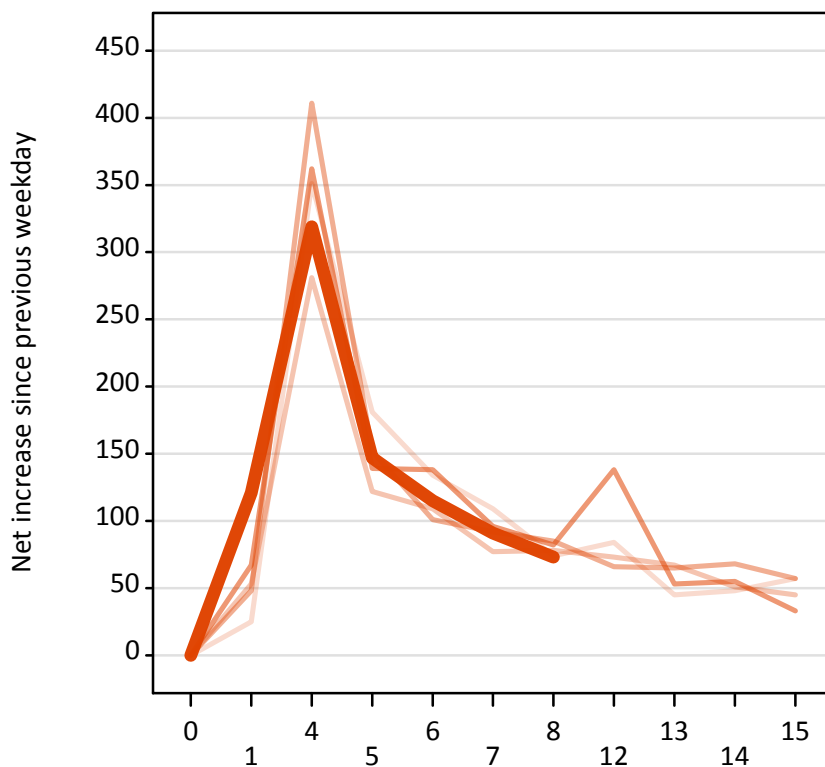
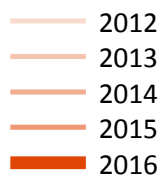
A.19 All Placed: Daily net change (from the EU - excluding UK)

Net increase since previous weekday (2016 cycle up to 8 days after A level results day)

Applicant status, days since A level results day		2012	2013	2014	2015	2016
All Placed	0	0	0	0	0	0
	1	450	520	490	550	650
	4	760	700	800	790	760
	5	390	330	410	450	360
	6	320	290	300	370	250
	7	330	260	280	280	270
	8	230	220	280	270	190
	12	210	170	120	400	
	13	130	140	150	150	
	14	130	150	170	150	
	15	140	130	140	130	

A.20 Placed through Clearing only: Daily net change (from the EU - excluding UK)

Net increase since previous weekday (2016 cycle up to 8 days after A level results day)



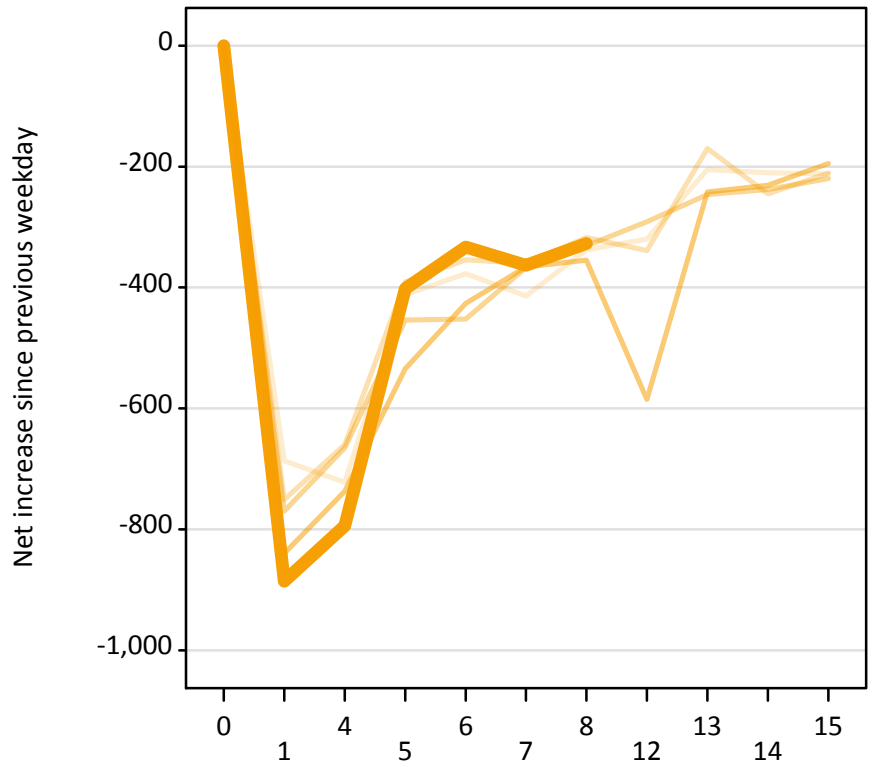
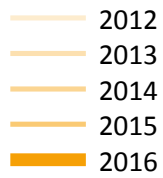
A.21 Placed through Clearing only: Daily net change (from the EU - excluding UK)

Net increase since previous weekday (2016 cycle up to 8 days after A level results day)

Applicant status, days since A level results day		2012	2013	2014	2015	2016
Placed through Clearing only	0	0	0	0	0	0
	1	30	50	50	70	120
	4	350	280	410	360	320
	5	180	120	150	140	150
	6	130	110	100	140	120
	7	110	80	90	100	90
	8	70	80	90	80	70
	12	80	70	70	140	
	13	50	70	70	50	
	14	50	50	70	60	
	15	60	50	60	30	

A.22 Holding Offer: Daily net change (from the EU - excluding UK)

Net increase since previous weekday (2016 cycle up to 8 days after A level results day)



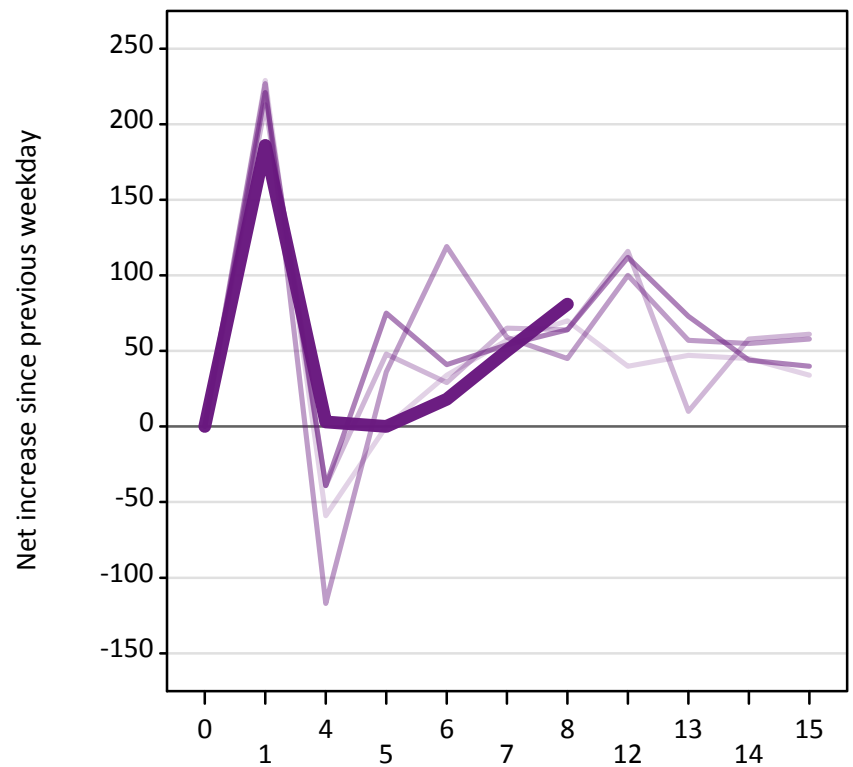
A.23 Holding Offer: Daily net change (from the EU - excluding UK)

Net increase since previous weekday (2016 cycle up to 8 days after A level results day)

Applicant status, days since A level results day		2012	2013	2014	2015	2016
Holding Offer	0	0	0	0	0	0
	1	-690	-750	-770	-840	-890
	4	-720	-660	-670	-740	-790
	5	-410	-390	-450	-530	-400
	6	-380	-350	-450	-430	-330
	7	-410	-360	-370	-370	-360
	8	-340	-320	-330	-360	-330
	12	-320	-340	-290	-590	
	13	-210	-170	-250	-240	
	14	-210	-250	-240	-230	
	15	-210	-210	-220	-200	

A.24 Free to be placed in Clearing: Daily net change (from the EU - excluding UK)

Net increase since previous weekday (2016 cycle up to 8 days after A level results day)



A.25 Free to be placed in Clearing: Daily net change (from the EU - excluding UK)

Net increase since previous weekday (2016 cycle up to 8 days after A level results day)

Applicant status, days since A level results day		2012	2013	2014	2015	2016
Free to be placed in Clearing	0	0	0	0	0	0
	1	230	210	230	220	190
	4	-60	-40	-120	-40	0
	5	0	50	40	80	0
	6	30	30	120	40	20
	7	60	70	60	50	50
	8	70	60	50	60	80
	12	40	120	100	110	
	13	50	10	60	70	
	14	50	60	60	40	
	15	30	60	60	40	