

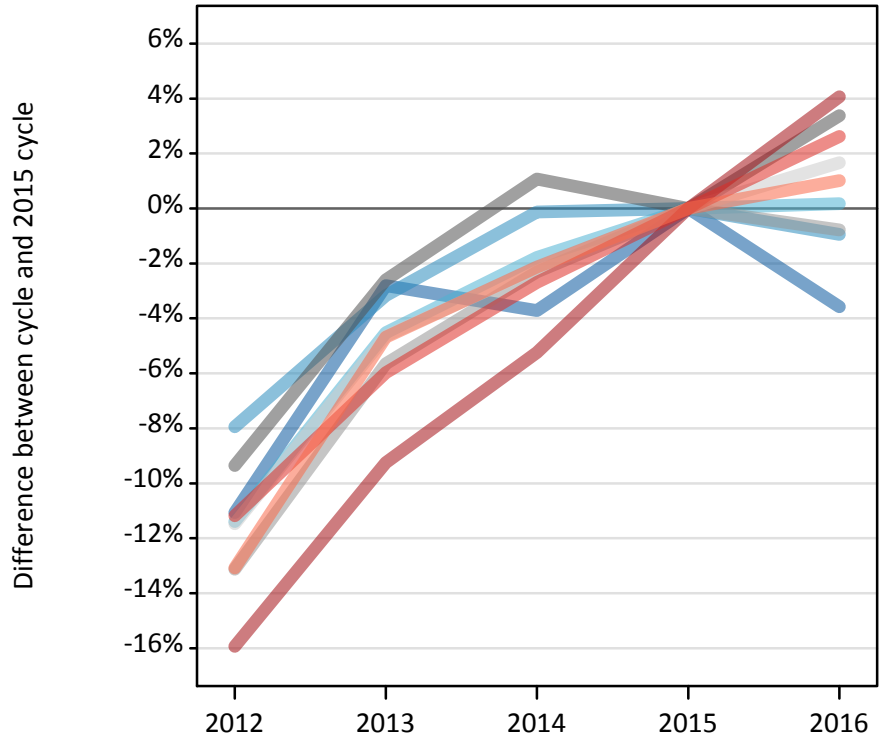
Daily Clearing Analysis: Region

Analysis at 00:05 on Thursday 25 August 2016 (7 days after A level results day)

R.1 Placed applicants by region of domicile: 7 days after A level results day

Placed applicants: change relative to 2015 cycle totals

- North East
- North West
- Yorkshire and The Humber
- East Midlands
- West Midlands
- East of England
- London
- South East
- South West



R.2 Placed applicants by region of domicile: 7 days after A level results day

Applicant Status	Domicile	2012	2013	2014	2015	2016
Placed	North East	13,680	14,950	14,810	15,390	14,840
	North West	42,930	45,160	46,580	46,640	46,200
	Yorkshire and The Humber	28,760	30,990	31,880	32,460	32,510
	East Midlands	24,300	26,110	27,090	26,800	27,710
	West Midlands	32,790	35,610	36,870	37,740	37,440
	East of England	32,330	34,820	35,720	36,520	37,130
	London	55,690	60,130	62,780	66,250	68,940
	South East	50,730	53,710	55,580	57,120	58,620
	South West	28,250	30,980	31,810	32,500	32,830
	(England total)	309,450	332,450	343,110	351,400	356,210
	Scotland	27,460	27,940	28,810	31,700	33,060
	Northern Ireland	12,140	13,440	13,470	13,160	14,020
	Wales	17,360	17,550	18,290	18,630	18,840
	UK	366,410	391,380	403,690	414,900	422,130

R.3 Placed applicants by region of domicile: 7 days after A level results day

Placed applicants: change relative to 2015 cycle totals

Applicant Status	Domicile	2012	2013	2014	2015	2016
Placed	North East	-11%	-3%	-4%	0%	-4%
	North West	-8%	-3%	-0%	0%	-1%
	Yorkshire and The Humber	-11%	-5%	-2%	0%	0%
	East Midlands	-9%	-3%	1%	0%	3%
	West Midlands	-13%	-6%	-2%	0%	-1%
	East of England	-11%	-5%	-2%	0%	2%
	London	-16%	-9%	-5%	0%	4%
	South East	-11%	-6%	-3%	0%	3%
	South West	-13%	-5%	-2%	0%	1%
	(England total)	-12%	-5%	-2%	0%	1%
	Scotland	-13%	-12%	-9%	0%	4%
	Northern Ireland	-8%	2%	2%	0%	6%
	Wales	-7%	-6%	-2%	0%	1%
	UK	-12%	-6%	-3%	0%	2%

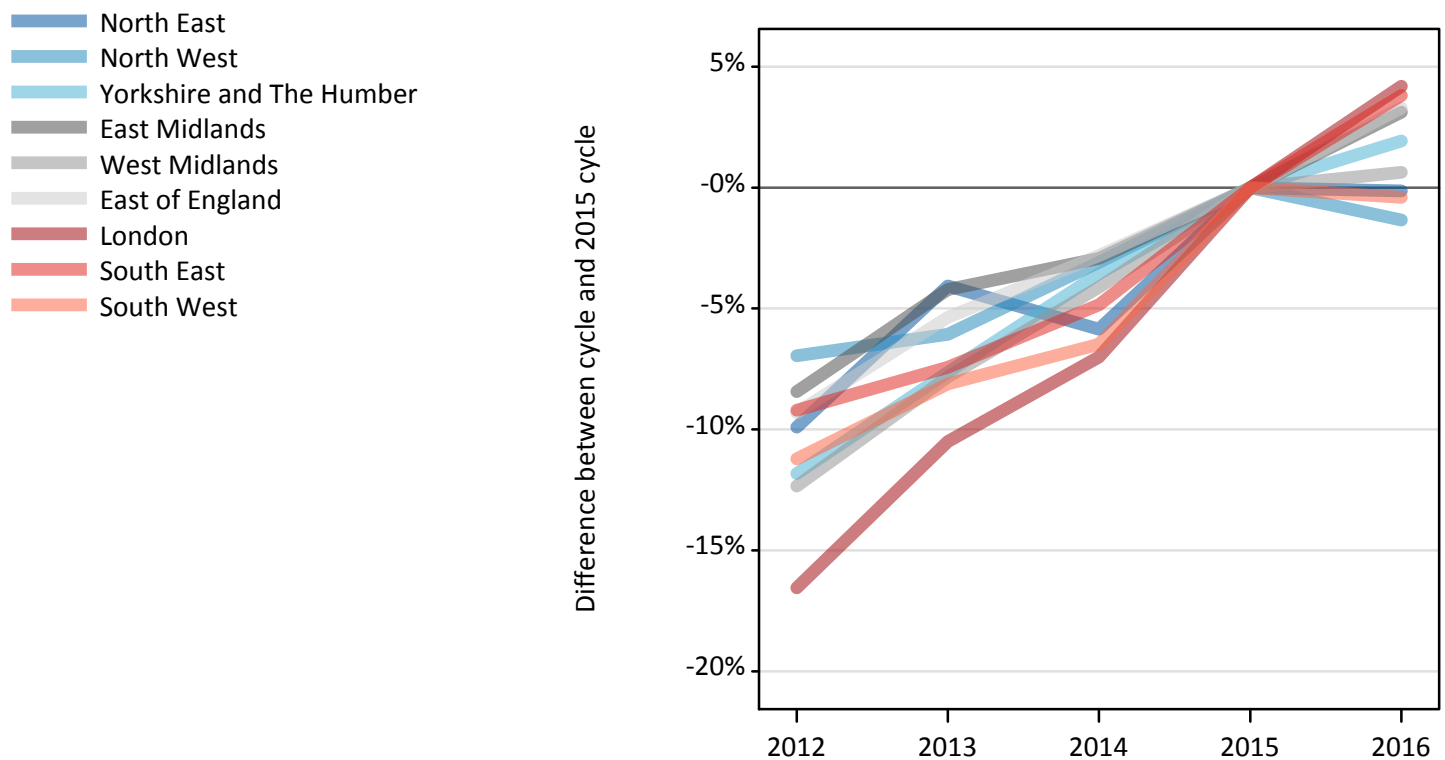
R.4 Placed applicants by region of domicile: 7 days after A level results day

Placed applicants: absolute change relative to 2015 cycle totals

Applicant Status	Domicile	2012	2013	2014	2015	2016
Placed	North East	-1,700	-430	-570	0	-550
	North West	-3,710	-1,480	-60	0	-440
	Yorkshire and The Humber	-3,700	-1,470	-580	0	60
	East Midlands	-2,510	-700	290	0	910
	West Midlands	-4,950	-2,130	-870	0	-300
	East of England	-4,190	-1,690	-790	0	610
	London	-10,560	-6,130	-3,470	0	2,690
	South East	-6,390	-3,410	-1,540	0	1,500
	South West	-4,250	-1,520	-690	0	330
	(England total)	-41,950	-18,950	-8,290	0	4,800
	Scotland	-4,240	-3,760	-2,890	0	1,360
	Northern Ireland	-1,020	270	300	0	850
	Wales	-1,270	-1,080	-340	0	210
	UK	-48,480	-23,520	-11,210	0	7,230

R.5 Placed 18 year old applicants by region of domicile: 7 days after A level results day

Placed 18 year old applicants: change relative to 2015 cycle totals



R.6 Placed 18 year old applicants by region of domicile: 7 days after A level results day

Applicant Status	Domicile	2012	2013	2014	2015	2016
Placed	North East	7,470	7,960	7,810	8,290	8,280
	North West	24,860	25,100	25,890	26,720	26,360
	Yorkshire and The Humber	16,320	17,090	17,850	18,510	18,860
	East Midlands	14,090	14,740	14,930	15,380	15,860
	West Midlands	18,320	19,260	20,040	20,900	21,030
	East of England	19,850	20,710	21,270	21,880	22,600
	London	28,700	30,770	31,980	34,390	35,830
	South East	30,400	30,990	31,850	33,470	34,750
	South West	15,280	15,810	16,100	17,210	17,140
	(England total)	175,270	182,420	187,710	196,750	200,710
	Scotland	13,980	14,060	14,270	14,380	14,630
	Northern Ireland	7,860	8,370	8,190	8,060	8,320
	Wales	9,600	9,530	9,900	10,330	10,480
	UK	206,710	214,380	220,070	229,520	234,150

R.7 Placed 18 year old applicants by region of domicile: 7 days after A level results day

Placed 18 year old applicants: change relative to 2015 cycle totals

Applicant Status	Domicile	2012	2013	2014	2015	2016
Placed	North East	-10%	-4%	-6%	0%	-0%
	North West	-7%	-6%	-3%	0%	-1%
	Yorkshire and The Humber	-12%	-8%	-4%	0%	2%
	East Midlands	-8%	-4%	-3%	0%	3%
	West Midlands	-12%	-8%	-4%	0%	1%
	East of England	-9%	-5%	-3%	0%	3%
	London	-17%	-11%	-7%	0%	4%
	South East	-9%	-7%	-5%	0%	4%
	South West	-11%	-8%	-6%	0%	-0%
	(England total)	-11%	-7%	-5%	0%	2%
	Scotland	-3%	-2%	-1%	0%	2%
	Northern Ireland	-3%	4%	2%	0%	3%
	Wales	-7%	-8%	-4%	0%	2%
	UK	-10%	-7%	-4%	0%	2%

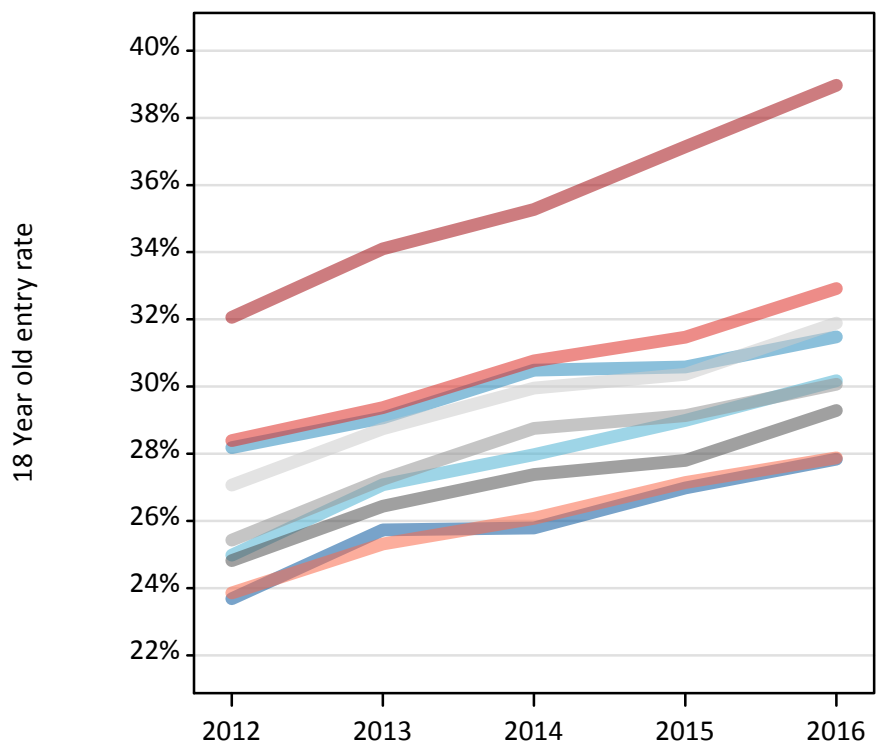
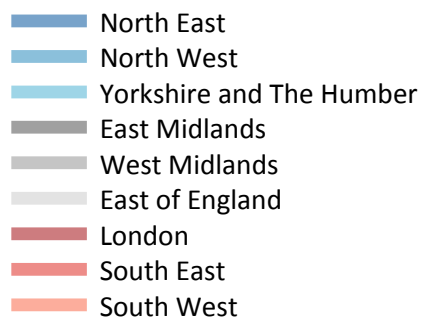
R.8 Placed 18 year old applicants by region of domicile: 7 days after A level results day

Placed 18 year old applicants: absolute change relative to 2015 cycle totals

Applicant Status	Domicile	2012	2013	2014	2015	2016
Placed	North East	-820	-340	-490	0	-10
	North West	-1,860	-1,620	-820	0	-360
	Yorkshire and The Humber	-2,190	-1,420	-660	0	360
	East Midlands	-1,300	-650	-450	0	480
	West Midlands	-2,580	-1,640	-860	0	130
	East of England	-2,040	-1,180	-620	0	720
	London	-5,690	-3,610	-2,410	0	1,440
	South East	-3,080	-2,490	-1,620	0	1,270
	South West	-1,930	-1,400	-1,120	0	-70
	(England total)	-21,480	-14,330	-9,040	0	3,960
	Scotland	-400	-320	-100	0	260
	Northern Ireland	-210	310	120	0	260
	Wales	-720	-800	-430	0	160
	UK	-22,810	-15,140	-9,450	0	4,630

R.9 Placed 18 year old applicants by region of domicile: 7 days after A level results day

Placed 18 year old applicants: entry rate



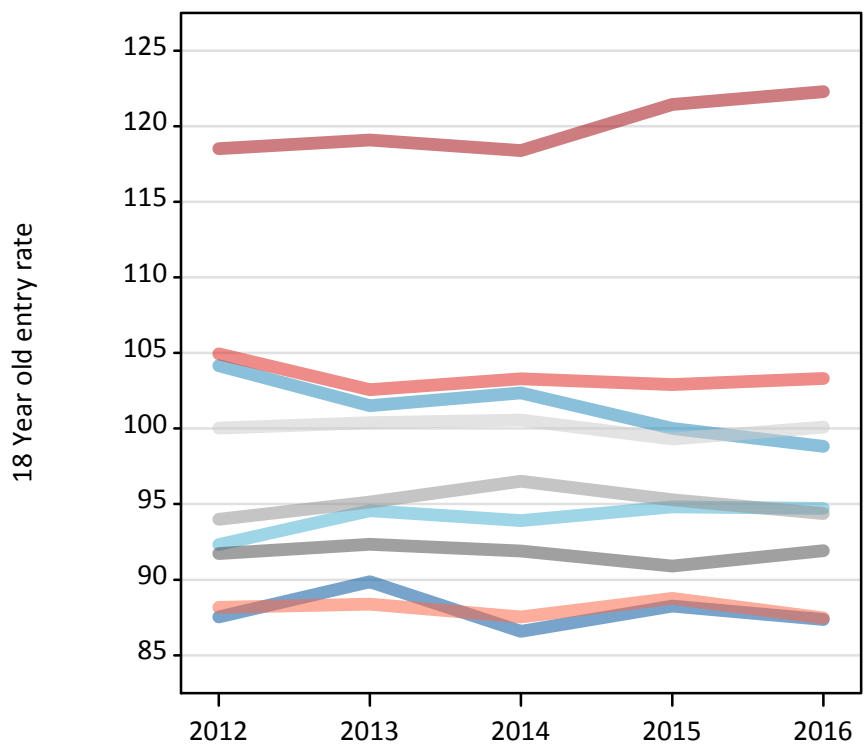
R.10 Placed 18 year old applicants by region of domicile: 7 days after A level results day

Placed 18 year old applicants: entry rate

Applicant Status	Domicile	2012	2013	2014	2015	2016
Placed	North East	23.7%	25.7%	25.8%	27.0%	27.8%
	North West	28.2%	29.1%	30.5%	30.6%	31.5%
	Yorkshire and The Humber	25.0%	27.1%	28.0%	29.0%	30.2%
	East Midlands	24.8%	26.4%	27.4%	27.8%	29.3%
	West Midlands	25.4%	27.2%	28.8%	29.1%	30.1%
	East of England	27.1%	28.7%	30.0%	30.4%	31.9%
	London	32.1%	34.1%	35.3%	37.1%	39.0%
	South East	28.4%	29.4%	30.8%	31.5%	32.9%
	South West	23.9%	25.3%	26.1%	27.1%	27.9%
	(England total)	27.1%	28.6%	29.8%	30.6%	31.9%
	Scotland	22.6%	22.8%	23.3%	23.9%	24.9%
	Northern Ireland	31.3%	34.2%	33.7%	32.5%	34.0%
	Wales	24.9%	25.2%	26.4%	27.4%	28.9%
	UK	26.7%	28.2%	29.2%	30.0%	31.2%

R.11 Placed 18 year old applicants by region of domicile: 7 days after A level results day

Placed 18 year old applicants: entry rates (indexed to 100 = England)



R.12 Placed 18 year old applicants by region of domicile: 7 days after A level results day

Placed 18 year old applicants: entry rate (indexed to 100 = England)

Applicant Status	Domicile	2012	2013	2014	2015	2016
Placed	North East	88	90	87	88	87
	North West	104	102	102	100	99
	Yorkshire and The Humber	92	95	94	95	95
	East Midlands	92	92	92	91	92
	West Midlands	94	95	97	95	94
	East of England	100	100	101	99	100
	London	119	119	118	121	122
	South East	105	103	103	103	103
	South West	88	88	88	89	87
	(England total)	100	100	100	100	100