

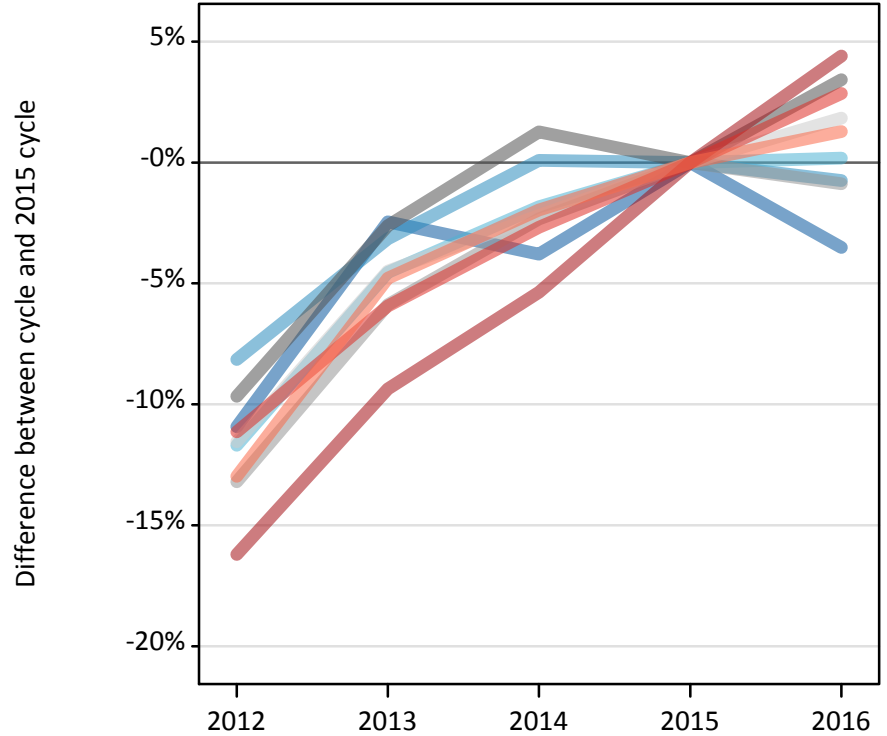
Daily Clearing Analysis: Region

Analysis at 00:05 on Wednesday 24 August 2016 (6 days after A level results day)

R.1 Placed applicants by region of domicile: 6 days after A level results day

Placed applicants: change relative to 2015 cycle totals

- North East
- North West
- Yorkshire and The Humber
- East Midlands
- West Midlands
- East of England
- London
- South East
- South West



R.2 Placed applicants by region of domicile: 6 days after A level results day

Applicant Status	Domicile	2012	2013	2014	2015	2016
Placed	North East	13,580	14,870	14,670	15,250	14,710
	North West	42,370	44,680	46,170	46,130	45,790
	Yorkshire and The Humber	28,440	30,740	31,620	32,210	32,270
	East Midlands	24,010	25,880	26,910	26,580	27,490
	West Midlands	32,450	35,190	36,520	37,390	37,060
	East of England	32,030	34,580	35,420	36,210	36,880
	London	54,620	59,090	61,690	65,180	68,060
	South East	50,330	53,280	55,120	56,640	58,260
	South West	28,030	30,670	31,580	32,210	32,630
	(England total)	305,870	328,990	339,690	347,800	353,130
	Scotland	27,250	27,800	28,660	31,600	32,920
	Northern Ireland	11,860	13,210	13,200	12,950	13,730
	Wales	17,200	17,400	18,150	18,490	18,720
	UK	362,170	387,400	399,700	410,840	418,500

R.3 Placed applicants by region of domicile: 6 days after A level results day

Placed applicants: change relative to 2015 cycle totals

Applicant Status	Domicile	2012	2013	2014	2015	2016
Placed	North East	-11%	-2%	-4%	0%	-4%
	North West	-8%	-3%	0%	0%	-1%
	Yorkshire and The Humber	-12%	-5%	-2%	0%	0%
	East Midlands	-10%	-3%	1%	0%	3%
	West Midlands	-13%	-6%	-2%	0%	-1%
	East of England	-12%	-4%	-2%	0%	2%
	London	-16%	-9%	-5%	0%	4%
	South East	-11%	-6%	-3%	0%	3%
	South West	-13%	-5%	-2%	0%	1%
	(England total)	-12%	-5%	-2%	0%	2%
	Scotland	-14%	-12%	-9%	0%	4%
	Northern Ireland	-8%	2%	2%	0%	6%
	Wales	-7%	-6%	-2%	0%	1%
	UK	-12%	-6%	-3%	0%	2%

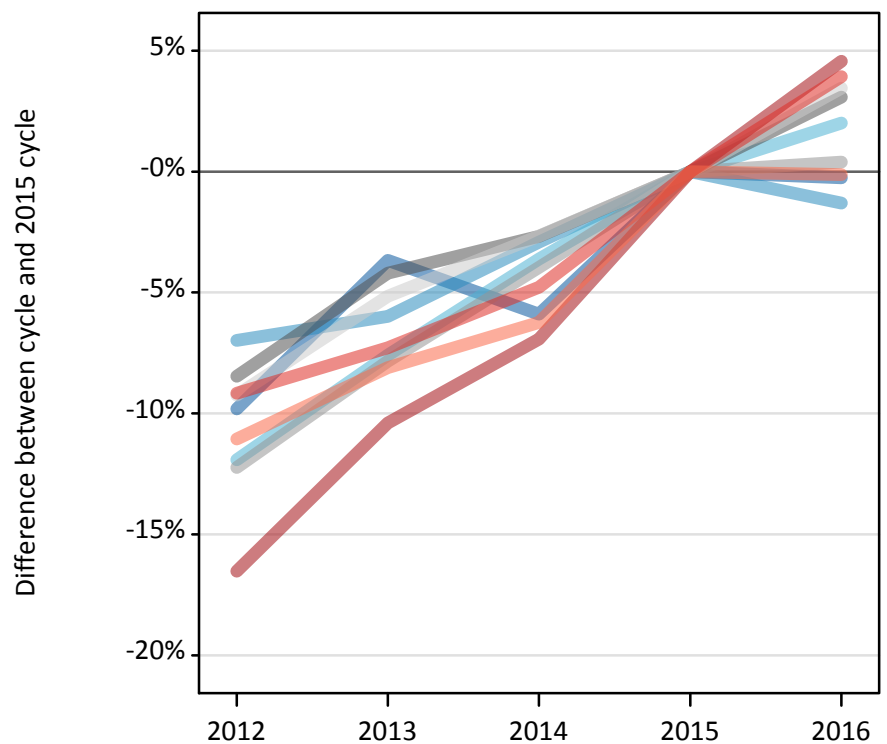
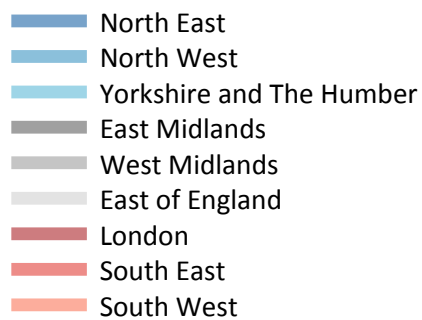
R.4 Placed applicants by region of domicile: 6 days after A level results day

Placed applicants: absolute change relative to 2015 cycle totals

Applicant Status	Domicile	2012	2013	2014	2015	2016
Placed	North East	-1,670	-370	-580	0	-540
	North West	-3,760	-1,450	40	0	-350
	Yorkshire and The Humber	-3,770	-1,470	-590	0	60
	East Midlands	-2,570	-690	340	0	910
	West Midlands	-4,940	-2,200	-870	0	-330
	East of England	-4,180	-1,630	-790	0	670
	London	-10,560	-6,100	-3,500	0	2,870
	South East	-6,310	-3,360	-1,520	0	1,620
	South West	-4,180	-1,540	-630	0	410
	(England total)	-41,930	-18,810	-8,110	0	5,330
	Scotland	-4,350	-3,790	-2,940	0	1,330
	Northern Ireland	-1,100	260	240	0	780
	Wales	-1,290	-1,090	-340	0	230
	UK	-48,670	-23,440	-11,140	0	7,670

R.5 Placed 18 year old applicants by region of domicile: 6 days after A level results day

Placed 18 year old applicants: change relative to 2015 cycle totals



R.6 Placed 18 year old applicants by region of domicile: 6 days after A level results day

Applicant Status	Domicile	2012	2013	2014	2015	2016
Placed	North East	7,430	7,930	7,750	8,240	8,220
	North West	24,670	24,930	25,750	26,520	26,170
	Yorkshire and The Humber	16,220	17,010	17,750	18,410	18,780
	East Midlands	14,000	14,650	14,880	15,290	15,760
	West Midlands	18,230	19,140	19,940	20,770	20,850
	East of England	19,730	20,620	21,160	21,740	22,490
	London	28,350	30,440	31,620	33,970	35,520
	South East	30,230	30,860	31,690	33,280	34,590
	South West	15,210	15,720	16,030	17,100	17,080
	(England total)	174,060	181,290	186,570	195,310	199,450
	Scotland	13,950	14,040	14,260	14,380	14,620
	Northern Ireland	7,650	8,250	8,020	7,950	8,140
	Wales	9,560	9,480	9,840	10,280	10,420
	UK	205,210	213,060	218,680	227,910	232,630

R.7 Placed 18 year old applicants by region of domicile: 6 days after A level results day

Placed 18 year old applicants: change relative to 2015 cycle totals

Applicant Status	Domicile	2012	2013	2014	2015	2016
Placed	North East	-10%	-4%	-6%	0%	-0%
	North West	-7%	-6%	-3%	0%	-1%
	Yorkshire and The Humber	-12%	-8%	-4%	0%	2%
	East Midlands	-8%	-4%	-3%	0%	3%
	West Midlands	-12%	-8%	-4%	0%	0%
	East of England	-9%	-5%	-3%	0%	3%
	London	-17%	-10%	-7%	0%	5%
	South East	-9%	-7%	-5%	0%	4%
	South West	-11%	-8%	-6%	0%	-0%
	(England total)	-11%	-7%	-4%	0%	2%
	Scotland	-3%	-2%	-1%	0%	2%
	Northern Ireland	-4%	4%	1%	0%	2%
	Wales	-7%	-8%	-4%	0%	1%
	UK	-10%	-7%	-4%	0%	2%

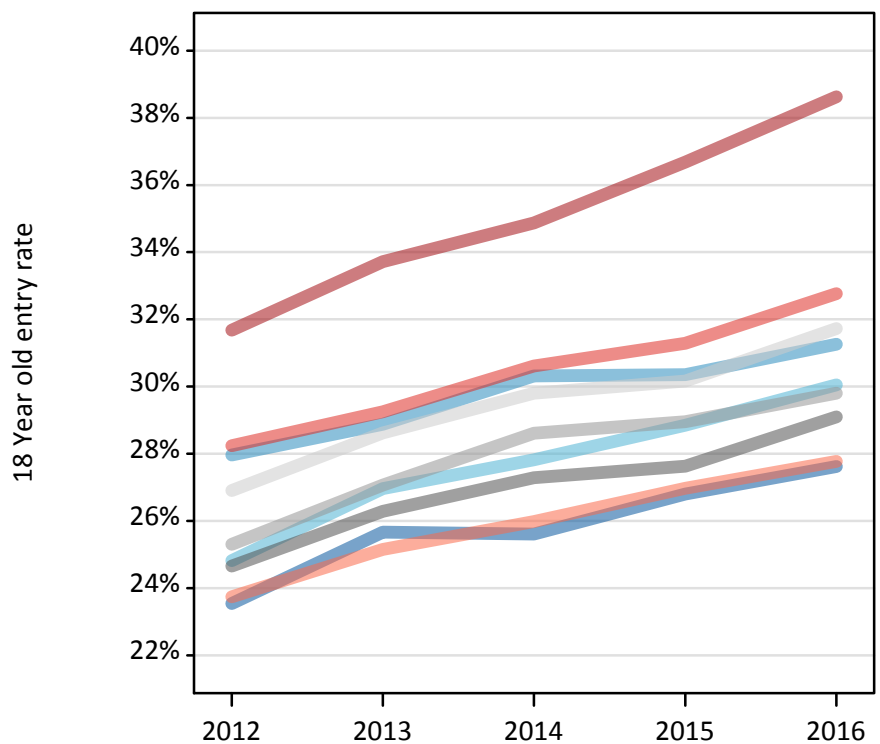
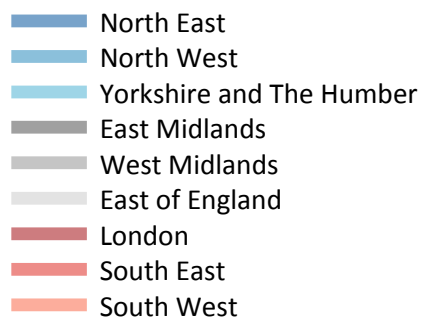
R.8 Placed 18 year old applicants by region of domicile: 6 days after A level results day

Placed 18 year old applicants: absolute change relative to 2015 cycle totals

Applicant Status	Domicile	2012	2013	2014	2015	2016
Placed	North East	-810	-300	-490	0	-20
	North West	-1,850	-1,590	-770	0	-350
	Yorkshire and The Humber	-2,200	-1,400	-670	0	370
	East Midlands	-1,290	-640	-410	0	470
	West Midlands	-2,540	-1,630	-820	0	80
	East of England	-2,010	-1,120	-580	0	750
	London	-5,610	-3,530	-2,350	0	1,550
	South East	-3,050	-2,430	-1,590	0	1,310
	South West	-1,890	-1,390	-1,070	0	-20
	(England total)	-21,250	-14,020	-8,750	0	4,140
	Scotland	-430	-340	-120	0	240
	Northern Ireland	-300	300	80	0	190
	Wales	-720	-800	-440	0	150
	UK	-22,710	-14,860	-9,230	0	4,720

R.9 Placed 18 year old applicants by region of domicile: 6 days after A level results day

Placed 18 year old applicants: entry rate



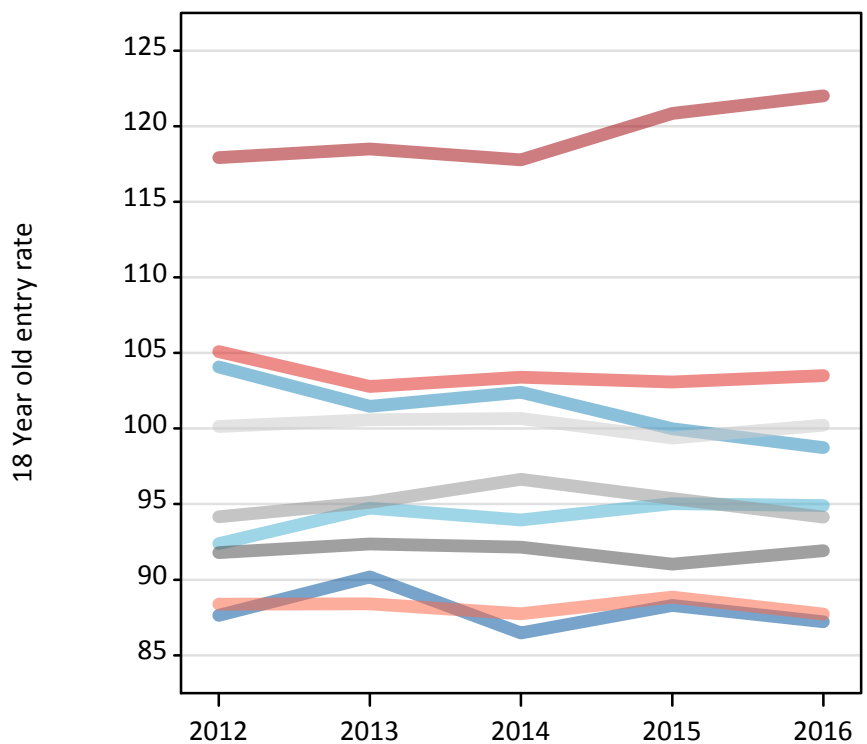
R.10 Placed 18 year old applicants by region of domicile: 6 days after A level results day

Placed 18 year old applicants: entry rate

Applicant Status	Domicile	2012	2013	2014	2015	2016
Placed	North East	23.5%	25.7%	25.6%	26.8%	27.6%
	North West	28.0%	28.9%	30.3%	30.4%	31.3%
	Yorkshire and The Humber	24.8%	27.0%	27.8%	28.8%	30.0%
	East Midlands	24.7%	26.3%	27.3%	27.6%	29.1%
	West Midlands	25.3%	27.1%	28.6%	28.9%	29.8%
	East of England	26.9%	28.6%	29.8%	30.2%	31.7%
	London	31.7%	33.7%	34.9%	36.7%	38.6%
	South East	28.2%	29.2%	30.6%	31.3%	32.8%
	South West	23.7%	25.2%	26.0%	27.0%	27.8%
	(England total)	26.9%	28.5%	29.6%	30.4%	31.7%
	Scotland	22.5%	22.8%	23.3%	23.9%	24.8%
	Northern Ireland	30.4%	33.6%	33.1%	32.0%	33.3%
	Wales	24.8%	25.1%	26.2%	27.3%	28.7%
	UK	26.5%	28.0%	29.0%	29.7%	31.0%

R.11 Placed 18 year old applicants by region of domicile: 6 days after A level results day

Placed 18 year old applicants: entry rates (indexed to 100 = England)



R.12 Placed 18 year old applicants by region of domicile: 6 days after A level results day

Placed 18 year old applicants: entry rate (indexed to 100 = England)

Applicant Status	Domicile	2012	2013	2014	2015	2016
Placed	North East	88	90	86	88	87
	North West	104	101	102	100	99
	Yorkshire and The Humber	92	95	94	95	95
	East Midlands	92	92	92	91	92
	West Midlands	94	95	97	95	94
	East of England	100	101	101	99	100
	London	118	119	118	121	122
	South East	105	103	103	103	103
	South West	88	88	88	89	88
	(England total)	100	100	100	100	100