

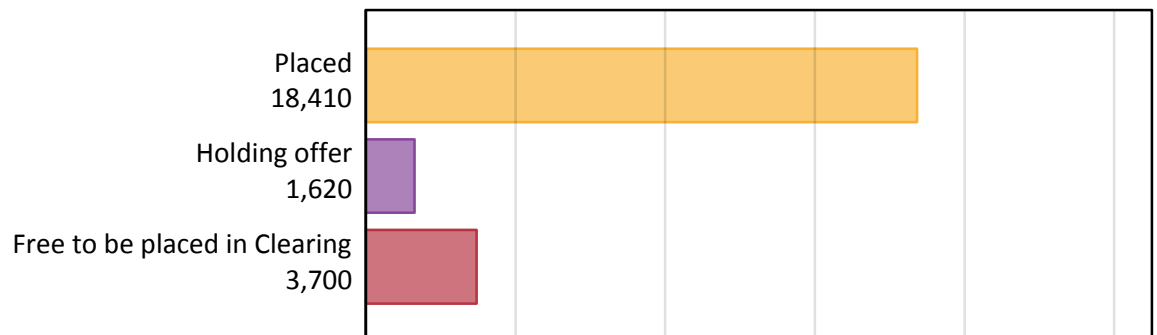
Daily Clearing Analysis: Overview

Analysis at 00:05 on Monday 22 August 2016 (4 days after A level results day)

A.1 Applicants by type and status from Wales, 2016 cycle

Applicant type	Status	2016
Main scheme	Placed (Clearing)	910
	Placed (Adjustment)	20
	Placed (Firm)	15,670
	Placed (Insurance)	1,070
	Placed (Other)	520
	Holding offer	1,620
	Free to be placed in Clearing	3,700
Direct to Clearing	Placed (Direct to Clearing)	220
	Other (Direct to Clearing)	260
All applicants	Placed	18,410

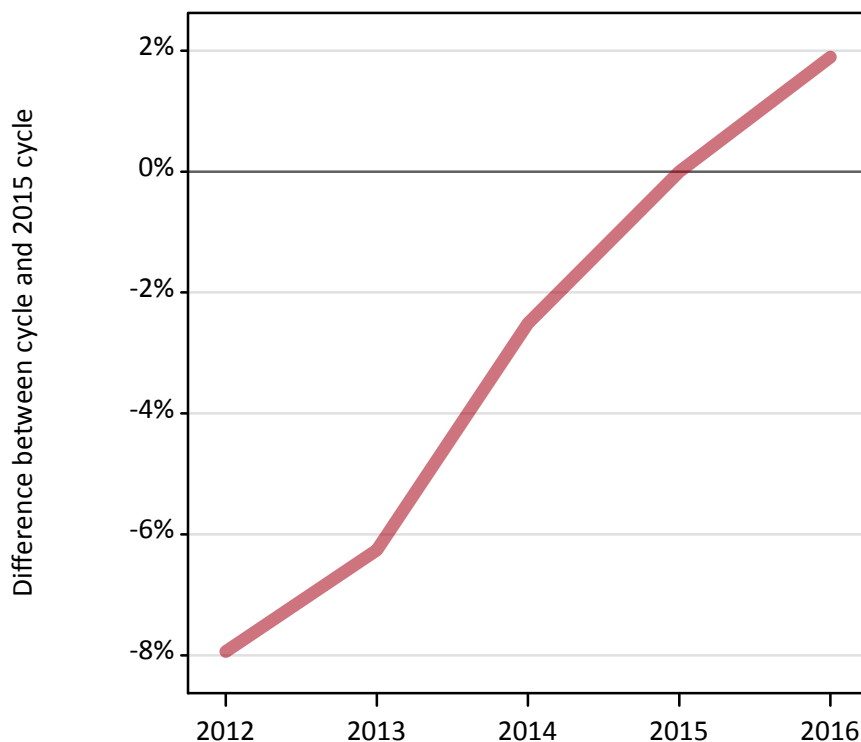
A.2 Summary of applicants who are placed, holding offers or free to be placed in Clearing (Wales)



A.3 All placed applicants from Wales: 4 days after A level results day

All placed applicants: difference between cycle and 2015 cycle

Placed



A.4 All placed applicants from Wales: 4 days after A level results day

All placed applicants: applicants at 4 days after A level results day

Applicant type	Status	2012	2013	2014	2015	2016
All applicants	Placed	16,630	16,930	17,610	18,070	18,410

A.5 All placed applicants from Wales: 4 days after A level results day

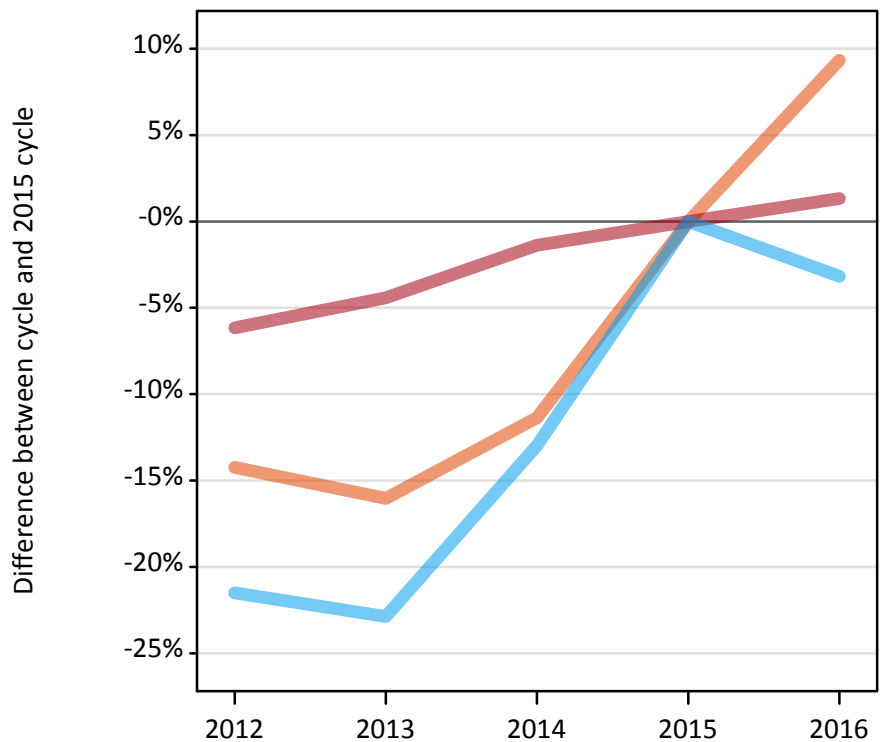
All placed applicants: difference between cycle and 2015 cycle

Applicant type	Status	2012	2013	2014	2015	2016
All applicants	Placed	-8%	-6%	-3%	0%	2%

A.6 Placed main scheme applicants from Wales: 4 days after A level results day

Selected placed routes: difference between cycle and 2015 cycle

- Placed (Clearing)
- Placed (Firm)
- Placed (Insurance)



A.7 Placed main scheme applicants from Wales: 4 days after A level results day

All Main scheme placed routes (excluding Adjustment): applicants at 4 days after A level results day

Applicant type	Status	2012	2013	2014	2015	2016
Main scheme	Placed (Clearing)	720	700	740	840	910
	Placed (Firm)	14,520	14,790	15,260	15,470	15,670
	Placed (Insurance)	870	850	960	1,100	1,070
	Placed (Other)	360	390	460	460	520

A.8 Placed main scheme applicants from Wales: 4 days after A level results day

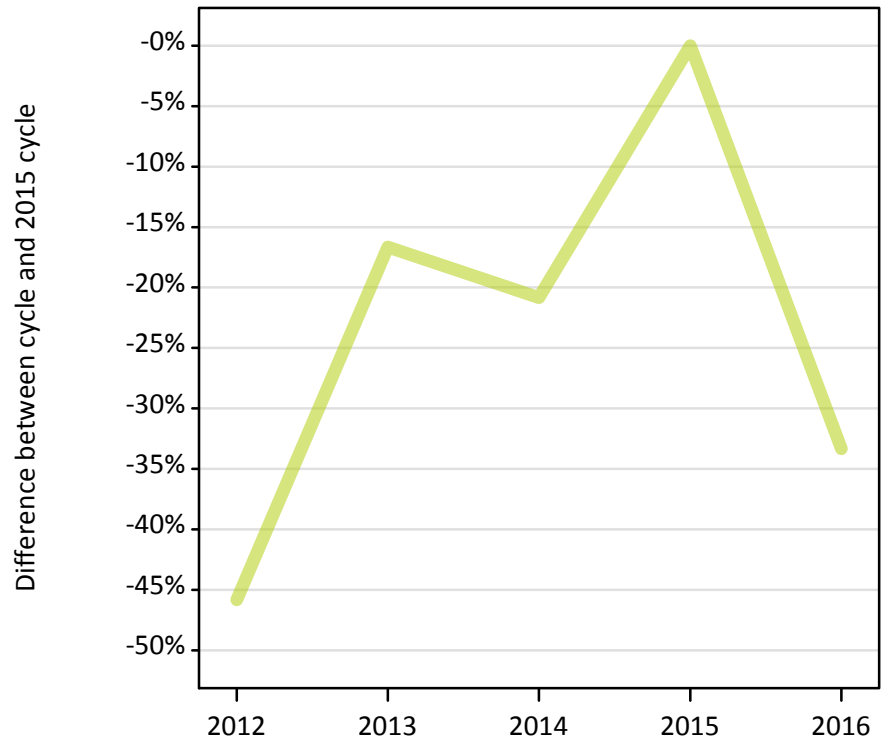
Selected placed routes: difference between cycle and 2015 cycle

Applicant type	Status	2012	2013	2014	2015	2016
Main scheme	Placed (Clearing)	-14%	-16%	-11%	0%	9%
	Placed (Firm)	-6%	-4%	-1%	0%	1%
	Placed (Insurance)	-22%	-23%	-13%	0%	-3%

A.9 Main scheme applicants placed through adjustment: 4 days after A level results day

Placed through adjustment: difference between cycle and 2015 cycle

Placed (Adjustment)



A.10 Main scheme applicants placed through adjustment: 4 days after A level results day

Placed through adjustment: applicants at 4 days after A level results day

Applicant type	Status	2012	2013	2014	2015	2016
Main scheme	Placed (Adjustment)	10	20	20	20	20

A.11 Main scheme applicants placed through adjustment: 4 days after A level results day

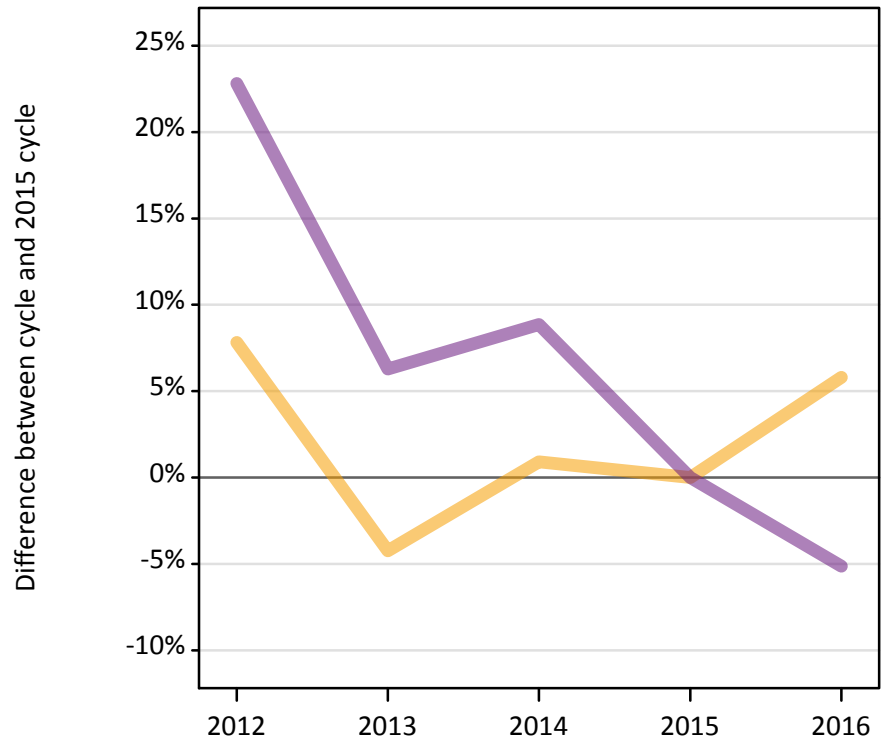
Placed through adjustment: difference between cycle and 2015 cycle

Applicant type	Status	2012	2013	2014	2015	2016
Main scheme	Placed (Adjustment)	-46%	-17%	-21%	0%	-33%

A.12 Main scheme applicants not currently placed from Wales: 4 days after A level results day

Applicants in unplaced states: difference between cycle and 2015 cycle

— Holding offer
— Free to be placed in Clearing



A.13 Main scheme applicants not currently placed from Wales: 4 days after A level results day

Applicants in unplaced states: applicants at 4 days after A level results day

Applicant type	Status	2012	2013	2014	2015	2016
Main scheme	Holding offer	1,650	1,470	1,550	1,530	1,620
	Free to be placed in Clearing	4,790	4,150	4,250	3,900	3,700

A.14 Main scheme applicants not currently placed from Wales: 4 days after A level results day

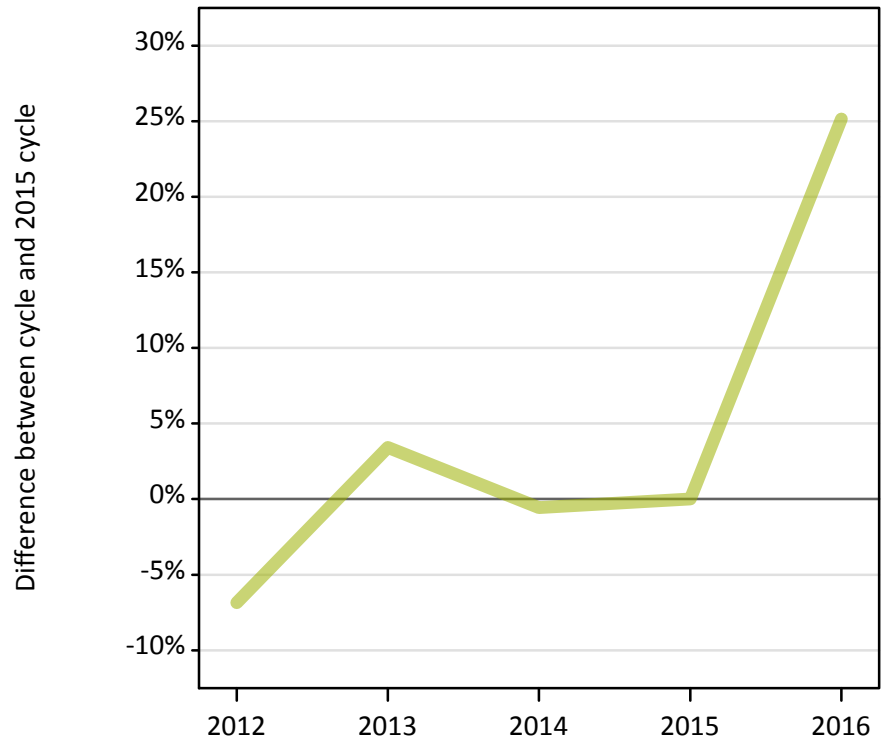
Applicants in unplaced states: difference between cycle and 2015 cycle

Applicant type	Status	2012	2013	2014	2015	2016
Main scheme	Holding offer	8%	-4%	1%	0%	6%
	Free to be placed in Clearing	23%	6%	9%	0%	-5%

A.15 Direct to Clearing applicants from Wales: 4 days after A level results day

Placed (Direct to Clearing): difference between cycle and 2015 cycle

Placed (Direct to Clearing)



A.16 Direct to Clearing applicants from Wales: 4 days after A level results day

Direct to Clearing 4 days after A level results day

Applicant type	Status	2012	2013	2014	2015	2016
Direct to Clearing	Placed (Direct to Clearing)	160	180	170	180	220
	Other (Direct to Clearing)	260	250	290	300	260

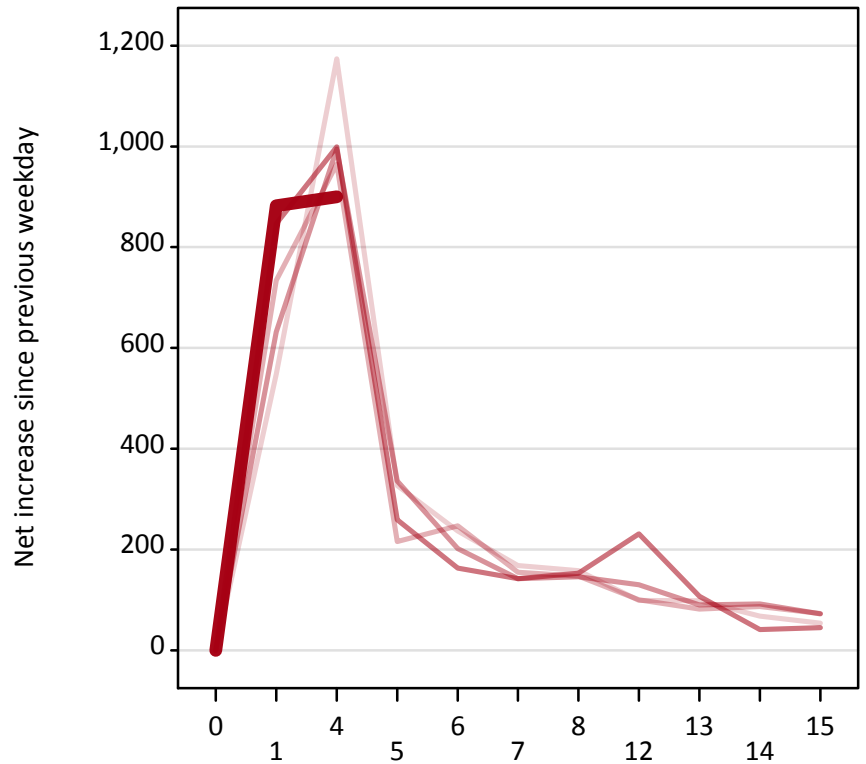
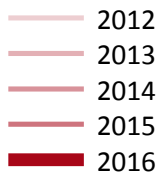
A.17 Direct to Clearing applicants from Wales: 4 days after A level results day

Placed (Direct to Clearing): difference between cycle and 2015 cycle

Applicant type	Status	2012	2013	2014	2015	2016
Direct to Clearing	Placed (Direct to Clearing)	-7%	3%	-1%	0%	25%

A.18 All Placed: Daily net change (from Wales)

Net increase since previous weekday (2016 cycle up to 4 days after A level results day)



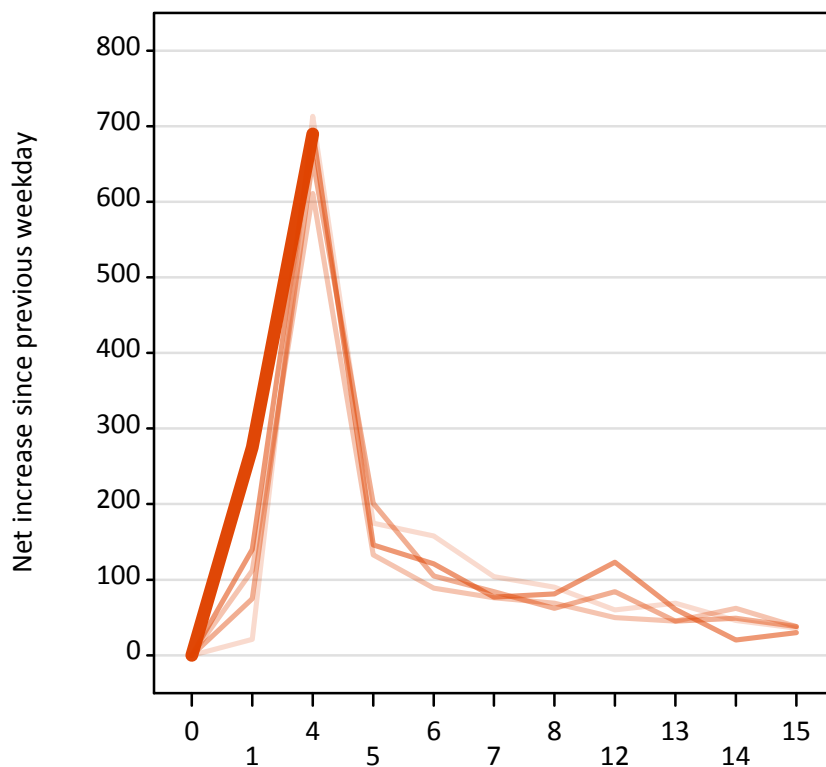
A.19 All Placed: Daily net change (from Wales)

Net increase since previous weekday (2016 cycle up to 4 days after A level results day)

Applicant status, days since A level results day		2012	2013	2014	2015	2016
All Placed	0	0	0	0	0	0
	1	550	730	630	850	880
	4	1,170	970	1,000	1,000	900
	5	330	220	340	260	
	6	240	250	200	160	
	7	170	160	140	140	
	8	160	150	150	150	
	12	100	100	130	230	
	13	100	80	90	110	
	14	70	90	90	40	
	15	50	70	70	50	

A.20 Placed through Clearing only: Daily net change (from Wales)

Net increase since previous weekday (2016 cycle up to 4 days after A level results day)



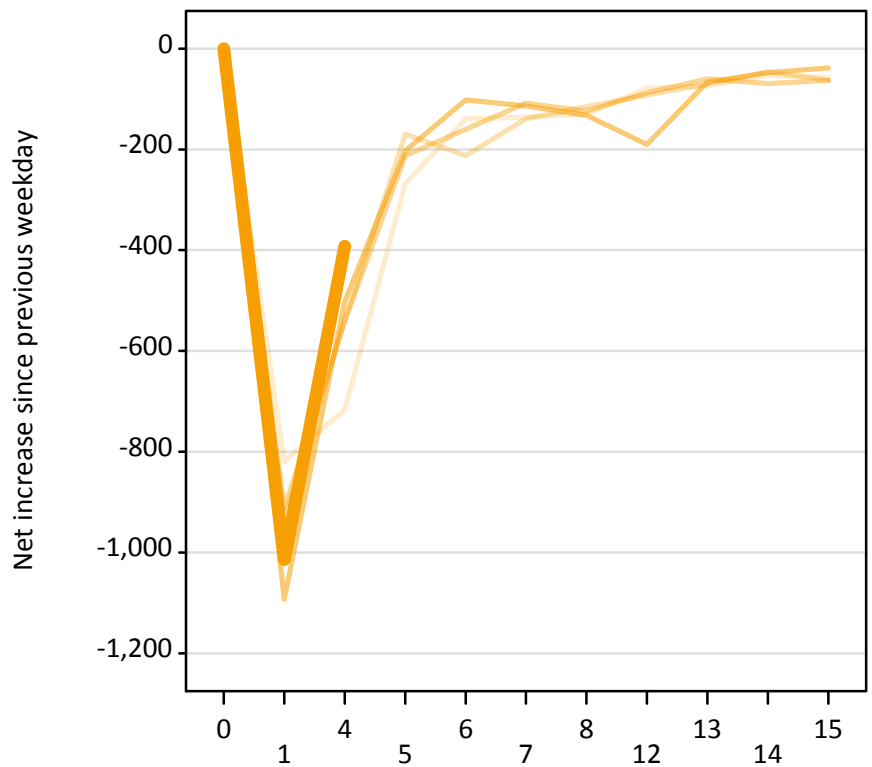
A.21 Placed through Clearing only: Daily net change (from Wales)

Net increase since previous weekday (2016 cycle up to 4 days after A level results day)

Applicant status, days since A level results day		2012	2013	2014	2015	2016
Placed through Clearing only	0	0	0	0	0	0
	1	20	110	80	140	280
	4	710	610	660	690	690
	5	180	130	200	150	
	6	160	90	110	120	
	7	100	80	80	80	
	8	90	70	60	80	
	12	60	50	80	120	
	13	70	50	50	60	
	14	50	60	50	20	
	15	40	40	40	30	

A.22 Holding Offer: Daily net change (from Wales)

Net increase since previous weekday (2016 cycle up to 4 days after A level results day)



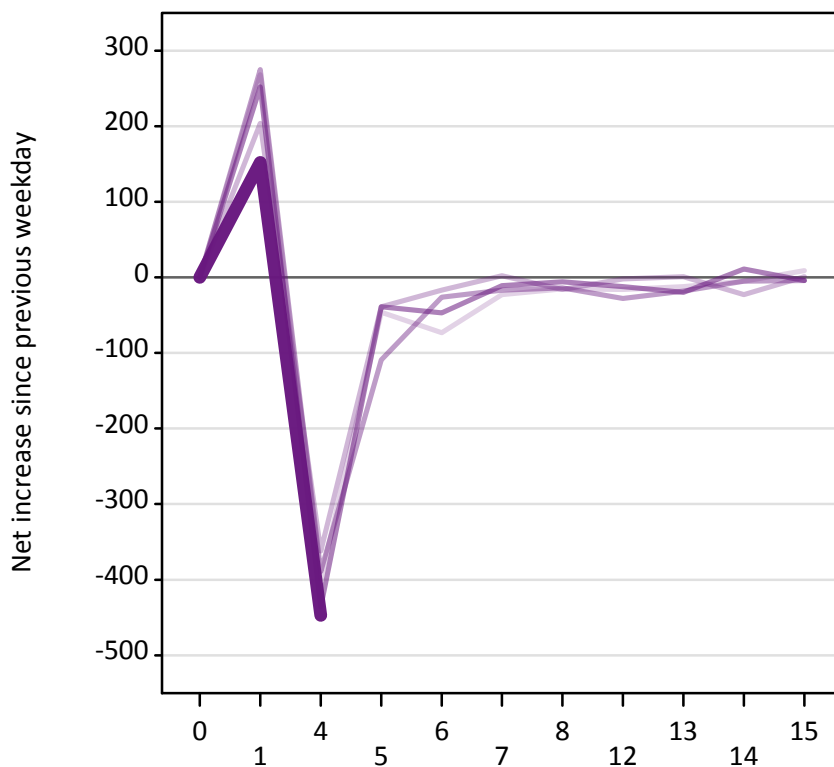
A.23 Holding Offer: Daily net change (from Wales)

Net increase since previous weekday (2016 cycle up to 4 days after A level results day)

Applicant status, days since A level results day		2012	2013	2014	2015	2016
Holding Offer	0	0	0	0	0	0
	1	-820	-930	-910	-1,090	-1,010
	4	-720	-540	-540	-500	-390
	5	-270	-170	-210	-200	
	6	-140	-210	-160	-100	
	7	-140	-140	-110	-110	
	8	-130	-120	-120	-130	
	12	-80	-90	-90	-190	
	13	-70	-70	-60	-70	
	14	-50	-50	-70	-50	
	15	-60	-60	-60	-40	

A.24 Free to be placed in Clearing: Daily net change (from Wales)

Net increase since previous weekday (2016 cycle up to 4 days after A level results day)



A.25 Free to be placed in Clearing: Daily net change (from Wales)

Net increase since previous weekday (2016 cycle up to 4 days after A level results day)

Applicant status, days since A level results day		2012	2013	2014	2015	2016
Free to be placed in Clearing	0	0	0	0	0	0
	1	270	200	280	250	150
	4	-400	-360	-390	-440	-450
	5	-50	-40	-110	-40	
	6	-70	-20	-30	-50	
	7	-20	0	-20	-10	
	8	-20	-20	-10	-10	
	12	-20	0	-30	-10	
	13	-10	0	-20	-20	
	14	-10	-20	-10	10	
	15	10	0	0	0	