

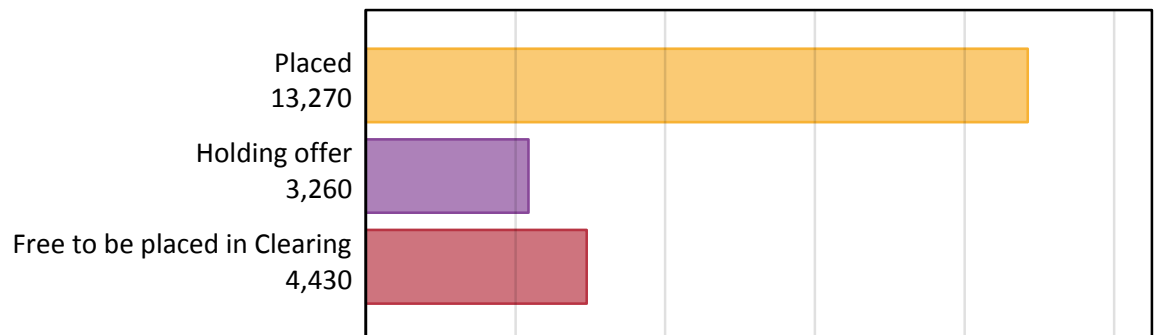
# Daily Clearing Analysis: Overview

Analysis at 00:05 on Monday 22 August 2016 (4 days after A level results day)

## A.1 Applicants by type and status from Northern Ireland, 2016 cycle

Applicant type	Status	2016
Main scheme	Placed (Clearing)	380
	Placed (Adjustment)	20
	Placed (Firm)	11,650
	Placed (Insurance)	1,080
	Placed (Other)	110
	Holding offer	3,260
	Free to be placed in Clearing	4,430
Direct to Clearing	Placed (Direct to Clearing)	30
	Other (Direct to Clearing)	60
All applicants	Placed	13,270

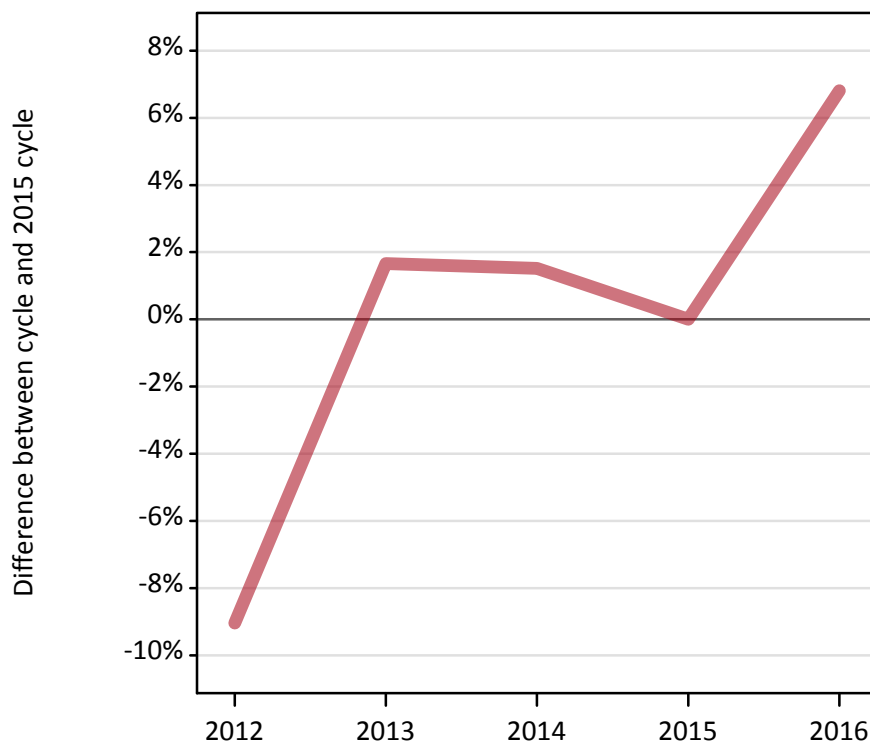
## A.2 Summary of applicants who are placed, holding offers or free to be placed in Clearing ( Northern Ireland )



### A.3 All placed applicants from Northern Ireland: 4 days after A level results day

All placed applicants: difference between cycle and 2015 cycle

Placed



### A.4 All placed applicants from Northern Ireland: 4 days after A level results day

All placed applicants: applicants at 4 days after A level results day

Applicant type	Status	2012	2013	2014	2015	2016
All applicants	Placed	11,300	12,630	12,610	12,420	13,270

### A.5 All placed applicants from Northern Ireland: 4 days after A level results day

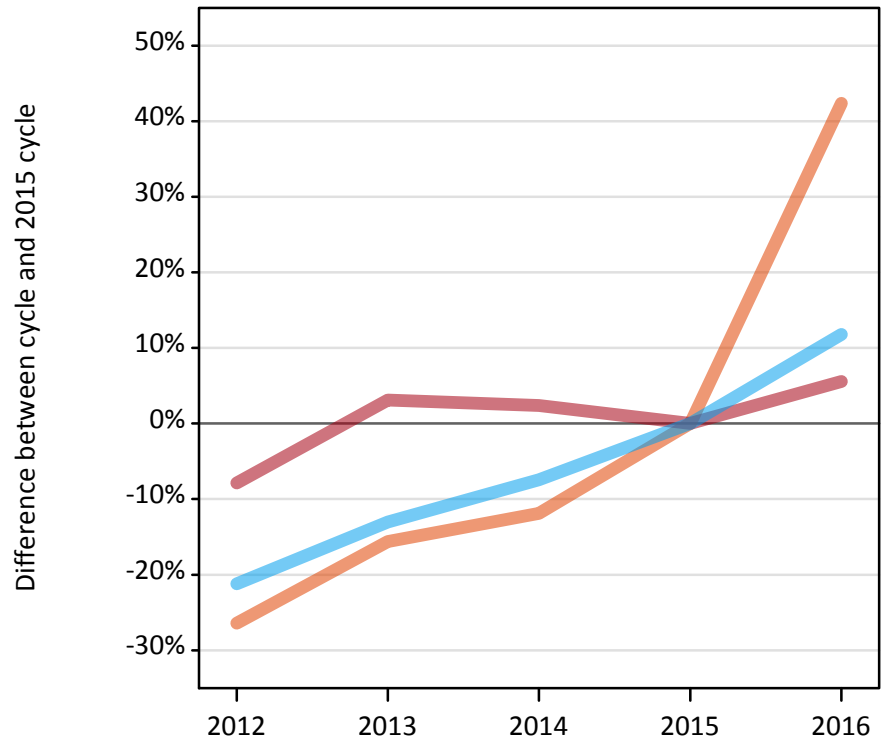
All placed applicants: difference between cycle and 2015 cycle

Applicant type	Status	2012	2013	2014	2015	2016
All applicants	Placed	-9%	2%	2%	0%	7%

### A.6 Placed main scheme applicants from Northern Ireland: 4 days after A level results day

Selected placed routes: difference between cycle and 2015 cycle

- Placed (Clearing)
- Placed (Firm)
- Placed (Insurance)



### A.7 Placed main scheme applicants from Northern Ireland: 4 days after A level results day

All Main scheme placed routes (excluding Adjustment): applicants at 4 days after A level results day

Applicant type	Status	2012	2013	2014	2015	2016
Main scheme	Placed (Clearing)	200	230	240	270	380
	Placed (Firm)	10,170	11,380	11,300	11,030	11,650
	Placed (Insurance)	760	840	900	970	1,080
	Placed (Other)	140	140	130	100	110

### A.8 Placed main scheme applicants from Northern Ireland: 4 days after A level results day

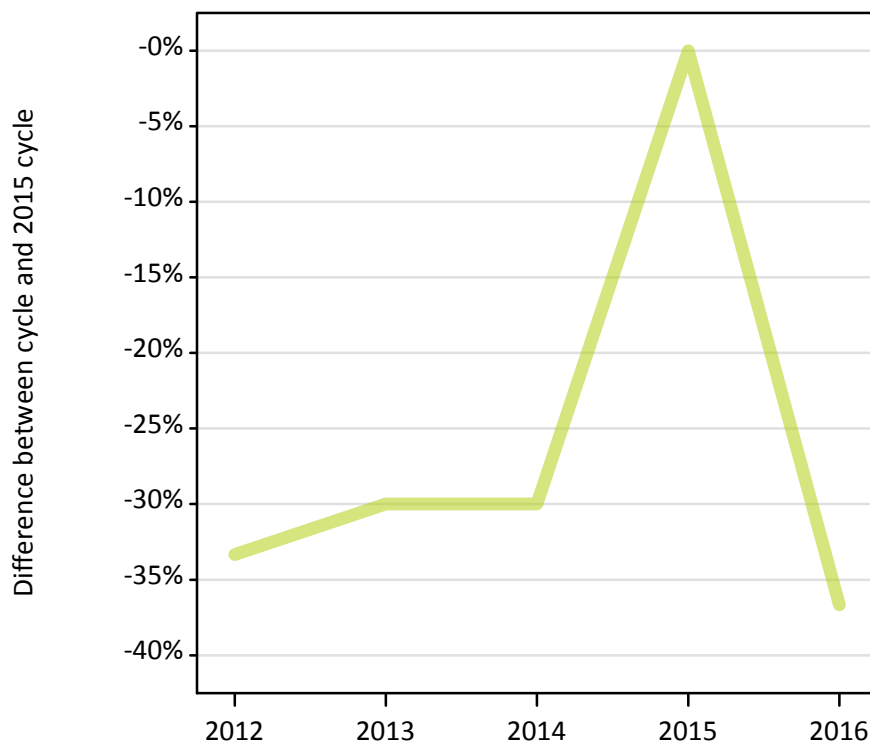
Selected placed routes: difference between cycle and 2015 cycle

Applicant type	Status	2012	2013	2014	2015	2016
Main scheme	Placed (Clearing)	-26%	-16%	-12%	0%	42%
	Placed (Firm)	-8%	3%	2%	0%	6%
	Placed (Insurance)	-21%	-13%	-7%	0%	12%

### A.9 Main scheme applicants placed through adjustment: 4 days after A level results day

Placed through adjustment: difference between cycle and 2015 cycle

Placed (Adjustment)



### A.10 Main scheme applicants placed through adjustment: 4 days after A level results day

Placed through adjustment: applicants at 4 days after A level results day

Applicant type	Status	2012	2013	2014	2015	2016
Main scheme	Placed (Adjustment)	20	20	20	30	20

### A.11 Main scheme applicants placed through adjustment: 4 days after A level results day

Placed through adjustment: difference between cycle and 2015 cycle

Applicant type	Status	2012	2013	2014	2015	2016
Main scheme	Placed (Adjustment)	-33%	-30%	-30%	0%	-37%

### A.12 Main scheme applicants not currently placed from Northern Ireland: 4 days after A level results day

Applicants in unplaced states: difference between cycle and 2015 cycle

— Holding offer  
— Free to be placed in Clearing



### A.13 Main scheme applicants not currently placed from Northern Ireland: 4 days after A level results day

Applicants in unplaced states: applicants at 4 days after A level results day

Applicant type	Status	2012	2013	2014	2015	2016
Main scheme	Holding offer	3,380	3,230	3,280	3,600	3,260
	Free to be placed in Clearing	4,290	4,250	4,280	4,670	4,430

### A.14 Main scheme applicants not currently placed from Northern Ireland: 4 days after A level results day

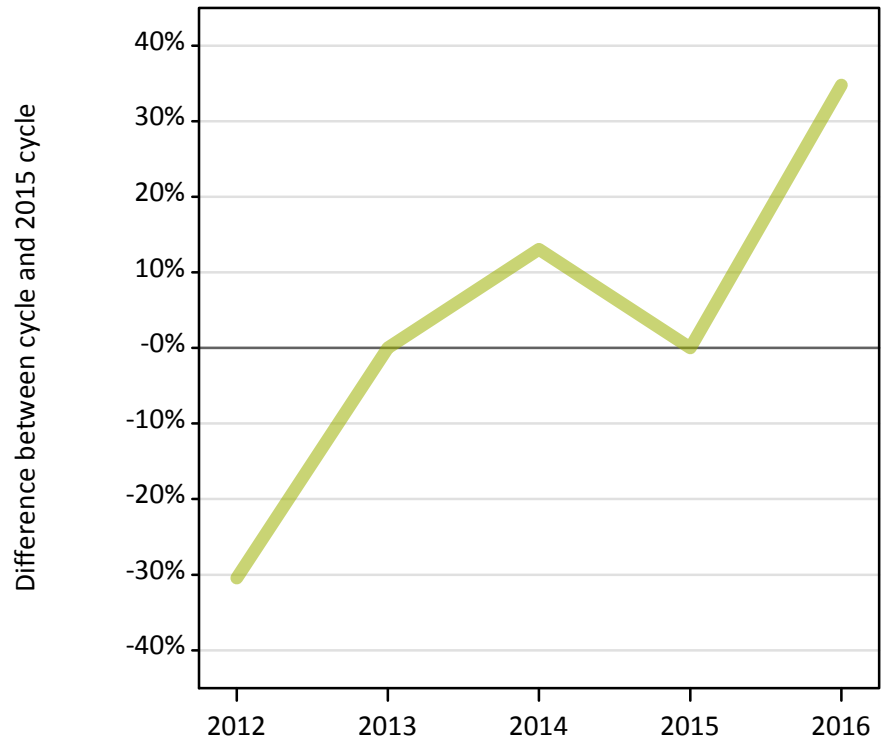
Applicants in unplaced states: difference between cycle and 2015 cycle

Applicant type	Status	2012	2013	2014	2015	2016
Main scheme	Holding offer	-6%	-10%	-9%	0%	-10%
	Free to be placed in Clearing	-8%	-9%	-8%	0%	-5%

### A.15 Direct to Clearing applicants from Northern Ireland: 4 days after A level results day

Placed (Direct to Clearing): difference between cycle and 2015 cycle

Placed (Direct to Clearing)



### A.16 Direct to Clearing applicants from Northern Ireland: 4 days after A level results day

Direct to Clearing 4 days after A level results day

Applicant type	Status	2012	2013	2014	2015	2016
Direct to Clearing	Placed (Direct to Clearing)	20	20	30	20	30
	Other (Direct to Clearing)	90	80	90	80	60

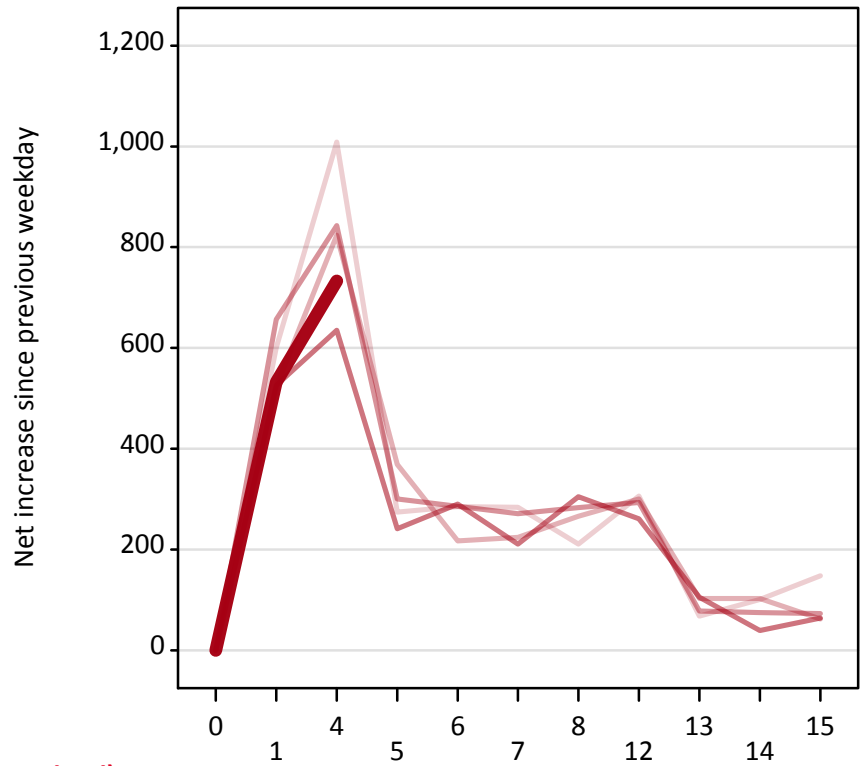
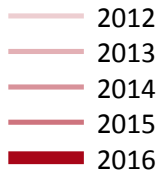
### A.17 Direct to Clearing applicants from Northern Ireland: 4 days after A level results day

Placed (Direct to Clearing): difference between cycle and 2015 cycle

Applicant type	Status	2012	2013	2014	2015	2016
Direct to Clearing	Placed (Direct to Clearing)	-30%	0%	13%	0%	35%

### A.18 All Placed: Daily net change (from Northern Ireland)

Net increase since previous weekday (2016 cycle up to 4 days after A level results day)



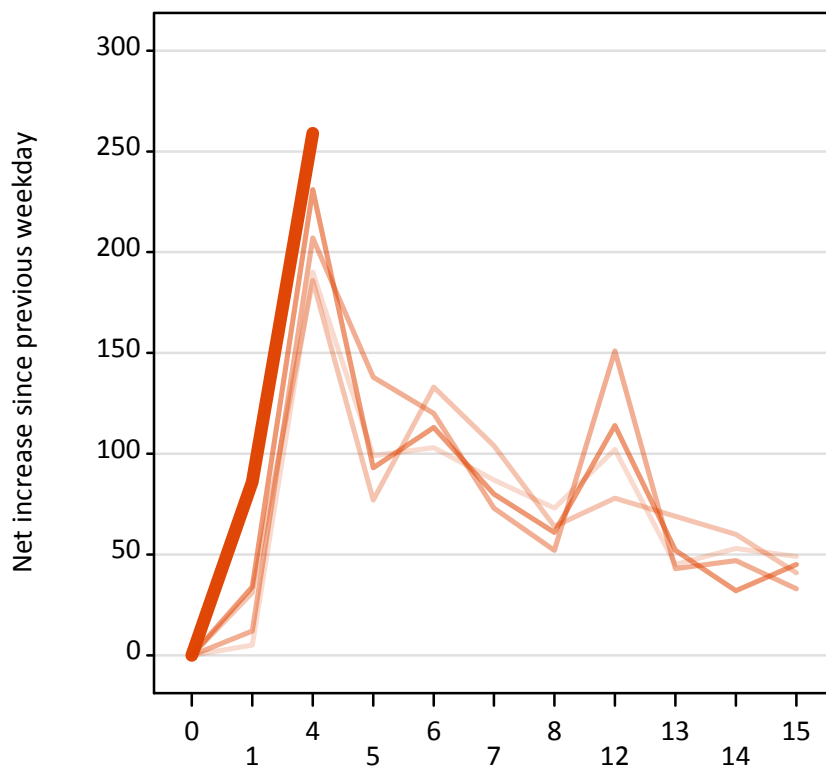
### A.19 All Placed: Daily net change (from Northern Ireland)

Net increase since previous weekday (2016 cycle up to 4 days after A level results day)

Applicant status, days since A level results day		2012	2013	2014	2015	2016
All Placed	0	0	0	0	0	0
	1	600	520	660	530	530
	4	1,010	820	840	640	730
	5	270	370	300	240	
	6	290	220	290	290	
	7	280	220	270	210	
	8	210	270	280	310	
	12	310	300	290	260	
	13	70	100	80	110	
	14	100	100	80	40	
	15	150	60	70	60	

### A.20 Placed through Clearing only: Daily net change (from Northern Ireland)

Net increase since previous weekday (2016 cycle up to 4 days after A level results day)



### A.21 Placed through Clearing only: Daily net change (from Northern Ireland)

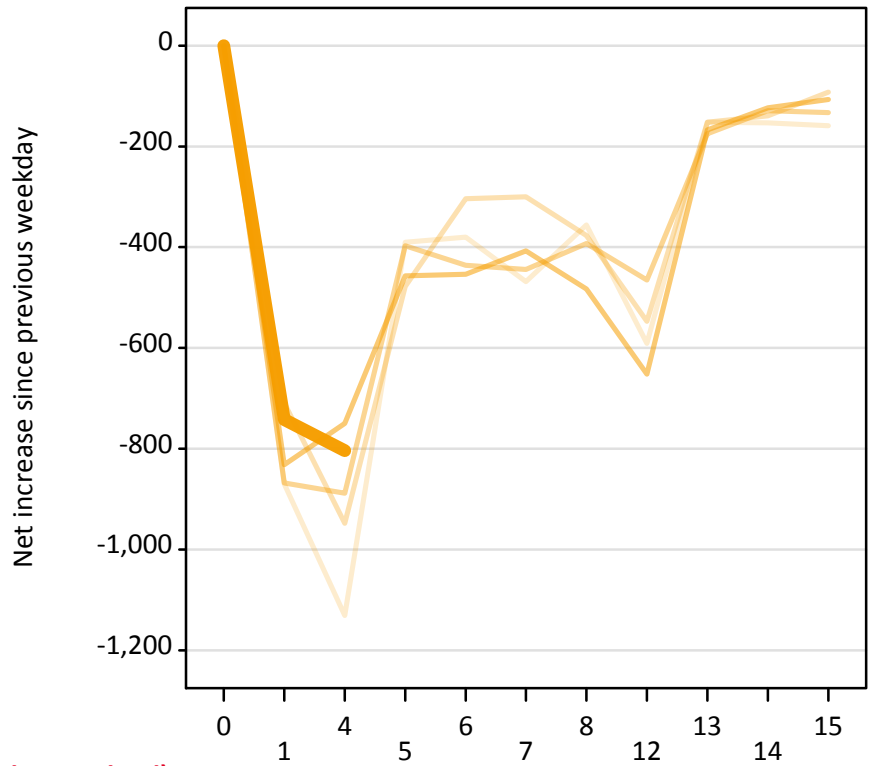
Net increase since previous weekday (2016 cycle up to 4 days after A level results day)

Applicant status, days since A level results day		2012	2013	2014	2015	2016
Placed through Clearing only	0	0	0	0	0	0
	1	10	30	10	30	90
	4	190	190	210	230	260
	5	100	80	140	90	
	6	100	130	120	110	
	7	90	100	70	80	
	8	70	60	50	60	
	12	100	80	150	110	
	13	50	70	40	50	
	14	50	60	50	30	
	15	50	40	30	50	



### A.22 Holding Offer: Daily net change (from Northern Ireland)

Net increase since previous weekday (2016 cycle up to 4 days after A level results day)



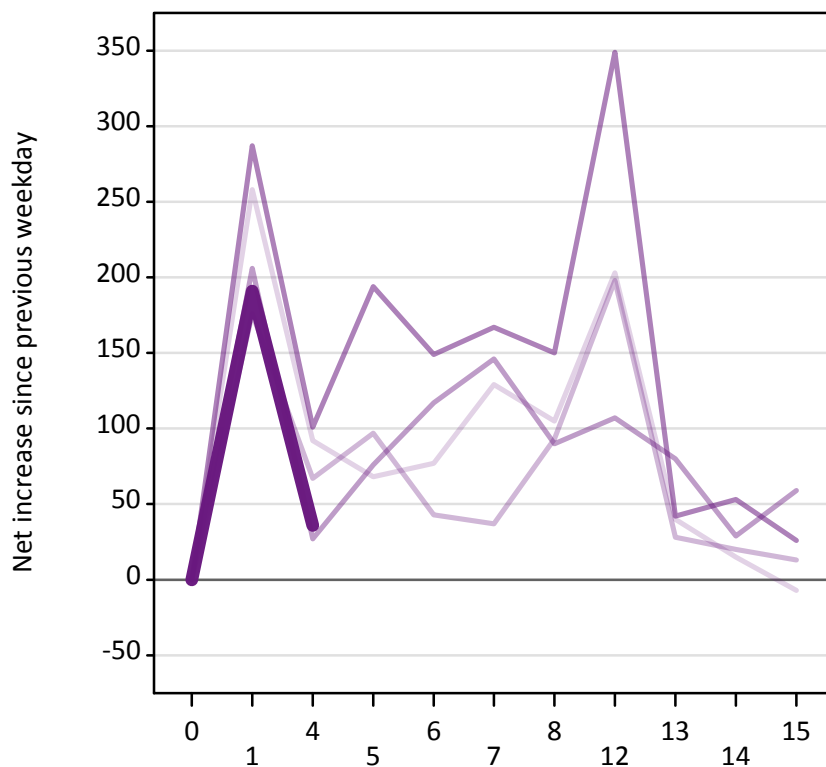
### A.23 Holding Offer: Daily net change (from Northern Ireland)

Net increase since previous weekday (2016 cycle up to 4 days after A level results day)

Applicant status, days since A level results day		2012	2013	2014	2015	2016
Holding Offer	0	0	0	0	0	0
	1	-870	-710	-870	-830	-740
	4	-1,130	-950	-890	-750	-800
	5	-390	-480	-400	-460	
	6	-380	-300	-440	-450	
	7	-470	-300	-440	-410	
	8	-360	-380	-390	-480	
	12	-590	-550	-470	-650	
	13	-150	-150	-180	-170	
	14	-150	-140	-130	-120	
	15	-160	-90	-130	-110	

### A.24 Free to be placed in Clearing: Daily net change (from Northern Ireland)

Net increase since previous weekday (2016 cycle up to 4 days after A level results day)



### A.25 Free to be placed in Clearing: Daily net change (from Northern Ireland)

Net increase since previous weekday (2016 cycle up to 4 days after A level results day)

Applicant status, days since A level results day		2012	2013	2014	2015	2016
Free to be placed in Clearing	0	0	0	0	0	0
	1	260	180	210	290	190
	4	90	70	30	100	40
	5	70	100	80	190	
	6	80	40	120	150	
	7	130	40	150	170	
	8	110	90	90	150	
	12	200	200	110	350	
	13	40	30	80	40	
	14	20	20	30	50	
	15	-10	10	60	30	