

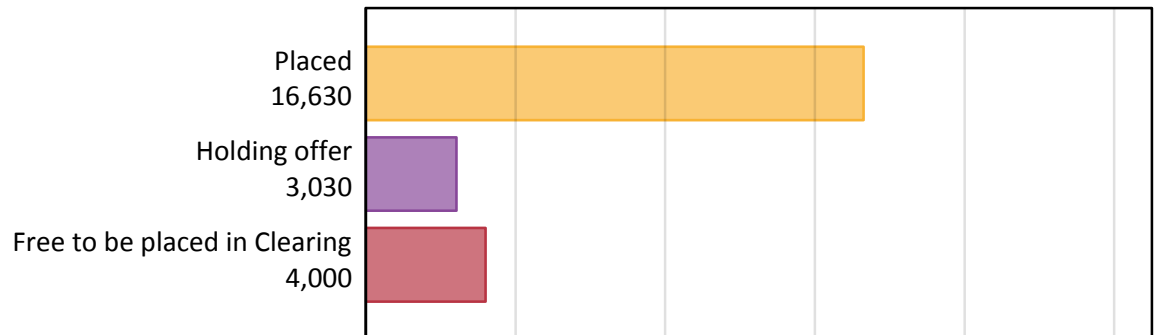
Daily Clearing Analysis: Overview

Analysis at 00:05 on Thursday 18 August 2016 (A level results day)

A.1 Applicants by type and status from Wales, 2016 cycle

Applicant type	Status	2016
Main scheme	Placed (Clearing)	70
	Placed (Adjustment)	0
	Placed (Firm)	15,060
	Placed (Insurance)	910
	Placed (Other)	490
	Holding offer	3,030
	Free to be placed in Clearing	4,000
Direct to Clearing	Placed (Direct to Clearing)	100
	Other (Direct to Clearing)	290
All applicants	Placed	16,630

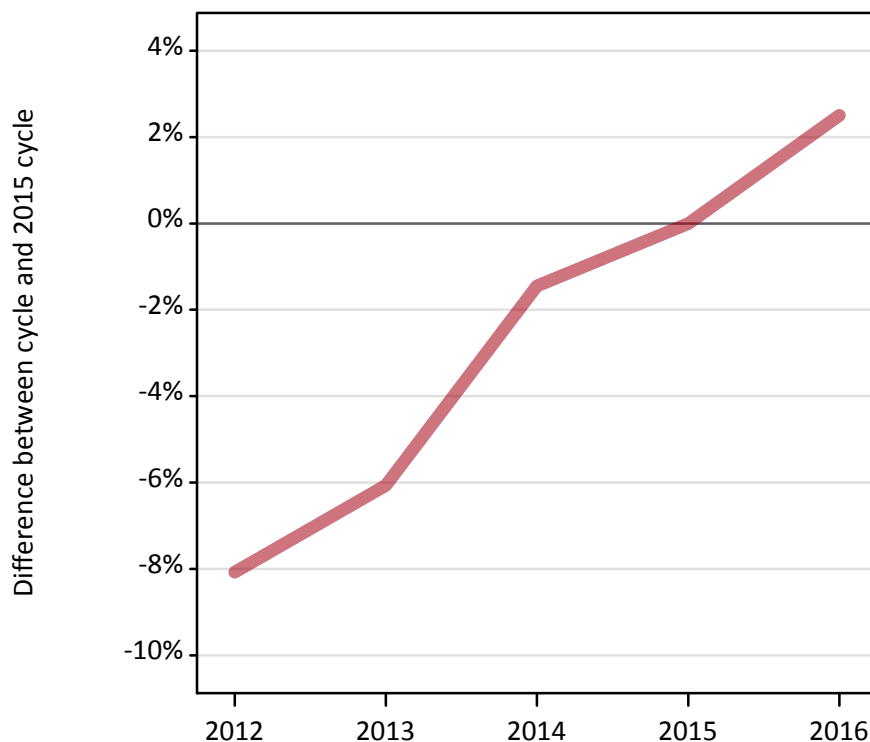
A.2 Summary of applicants who are placed, holding offers or free to be placed in Clearing (Wales)



A.3 All placed applicants from Wales: A level results day

All placed applicants: difference between cycle and 2015 cycle

Placed



A.4 All placed applicants from Wales: A level results day

All placed applicants: applicants at A level results day

Applicant type	Status	2012	2013	2014	2015	2016
All applicants	Placed	14,910	15,240	15,980	16,220	16,630

A.5 All placed applicants from Wales: A level results day

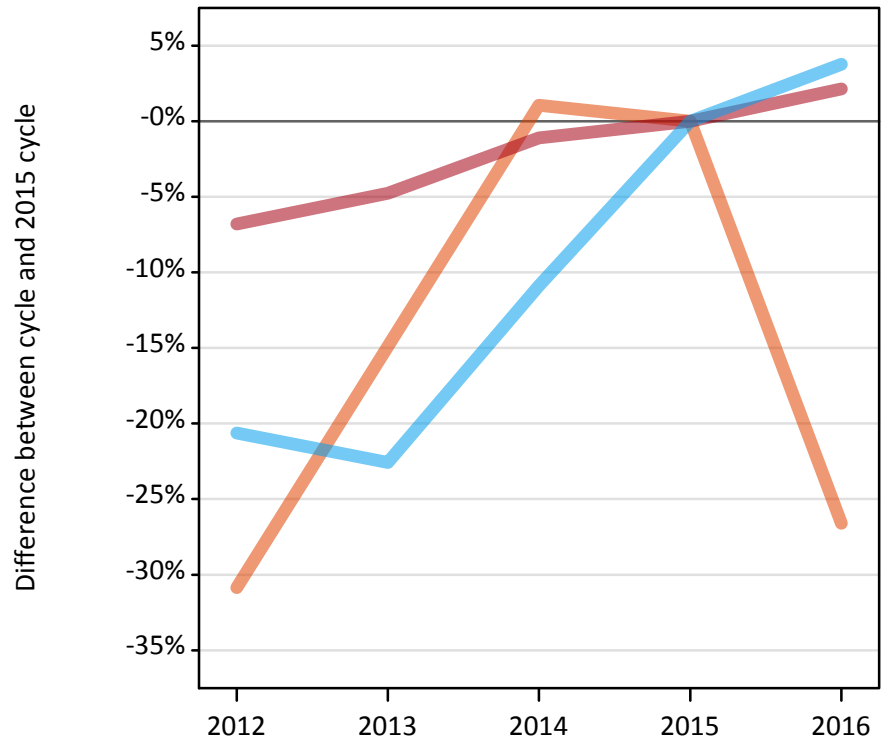
All placed applicants: difference between cycle and 2015 cycle

Applicant type	Status	2012	2013	2014	2015	2016
All applicants	Placed	-8%	-6%	-1%	0%	3%

A.6 Placed main scheme applicants from Wales: A level results day

Selected placed routes: difference between cycle and 2015 cycle

- Placed (Clearing)
- Placed (Firm)
- Placed (Insurance)



A.7 Placed main scheme applicants from Wales: A level results day

All Main scheme placed routes (excluding Adjustment): applicants at A level results day

Applicant type	Status	2012	2013	2014	2015	2016
Main scheme	Placed (Clearing)	70	80	100	90	70
	Placed (Firm)	13,740	14,040	14,580	14,740	15,060
	Placed (Insurance)	690	680	780	870	910
	Placed (Other)	330	360	440	430	490

A.8 Placed main scheme applicants from Wales: A level results day

Selected placed routes: difference between cycle and 2015 cycle

Applicant type	Status	2012	2013	2014	2015	2016
Main scheme	Placed (Clearing)	-31%	-15%	1%	0%	-27%
	Placed (Firm)	-7%	-5%	-1%	0%	2%
	Placed (Insurance)	-21%	-23%	-11%	0%	4%

A.9 Main scheme applicants placed through adjustment: A level results day

Placed through adjustment: difference between cycle and 2015 cycle

[Analysis on placed by adjustment available from 19 August 2016]

A.10 Main scheme applicants placed through adjustment: A level results day

Placed through adjustment: applicants at A level results day

[Analysis on placed by adjustment available from 19 August 2016]

A.11 Main scheme applicants placed through adjustment: A level results day

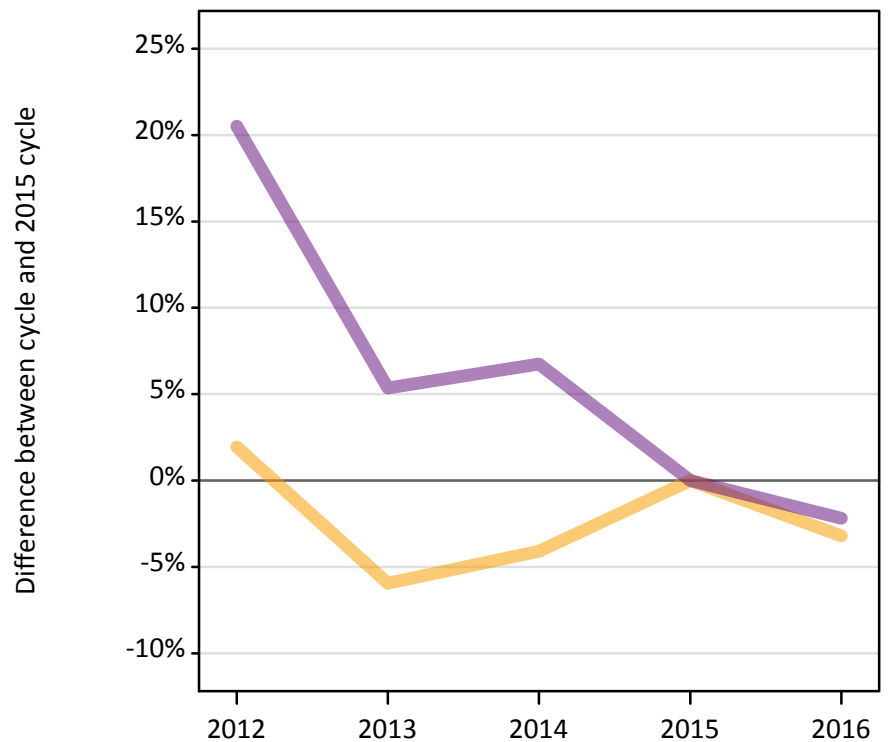
Placed through adjustment: difference between cycle and 2015 cycle

[Analysis on placed by adjustment available from 19 August 2016]

A.12 Main scheme applicants not currently placed from Wales: A level results day

Applicants in unplaced states: difference between cycle and 2015 cycle

— Holding offer
— Free to be placed in Clearing



A.13 Main scheme applicants not currently placed from Wales: A level results day

Applicants in unplaced states: applicants at A level results day

Applicant type	Status	2012	2013	2014	2015	2016
Main scheme	Holding offer	3,190	2,940	3,000	3,130	3,030
	Free to be placed in Clearing	4,920	4,310	4,360	4,090	4,000

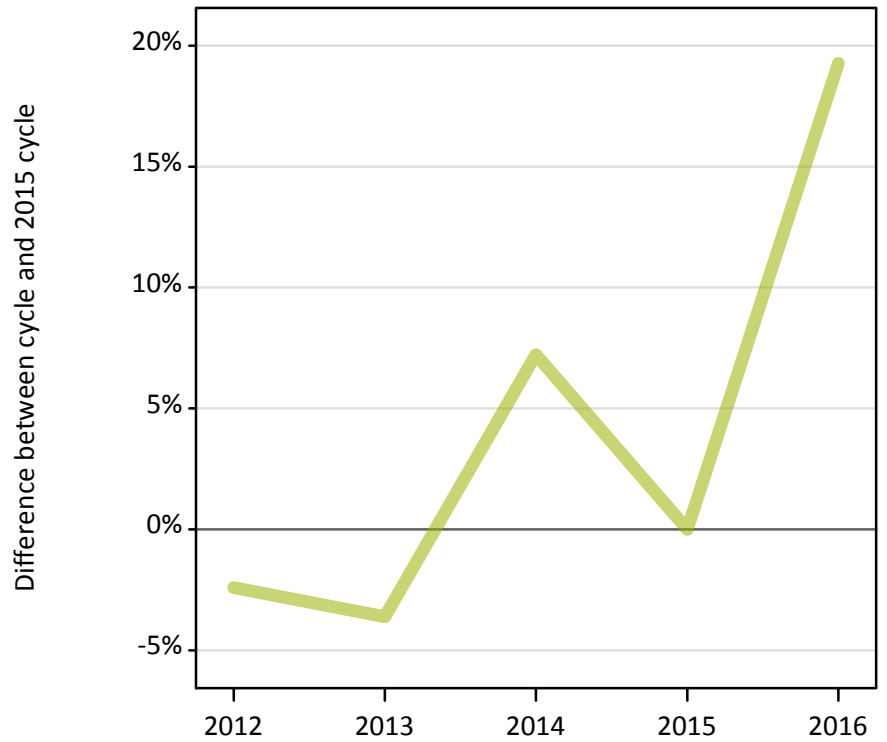
A.14 Main scheme applicants not currently placed from Wales: A level results day

Applicants in unplaced states: difference between cycle and 2015 cycle

Applicant type	Status	2012	2013	2014	2015	2016
Main scheme	Holding offer	2%	-6%	-4%	0%	-3%
	Free to be placed in Clearing	21%	5%	7%	0%	-2%

A.15 Direct to Clearing applicants from Wales: A level results day
 Placed (Direct to Clearing): difference between cycle and 2015 cycle

Placed (Direct to Clearing)



A.16 Direct to Clearing applicants from Wales: A level results day
 Direct to Clearing A level results day

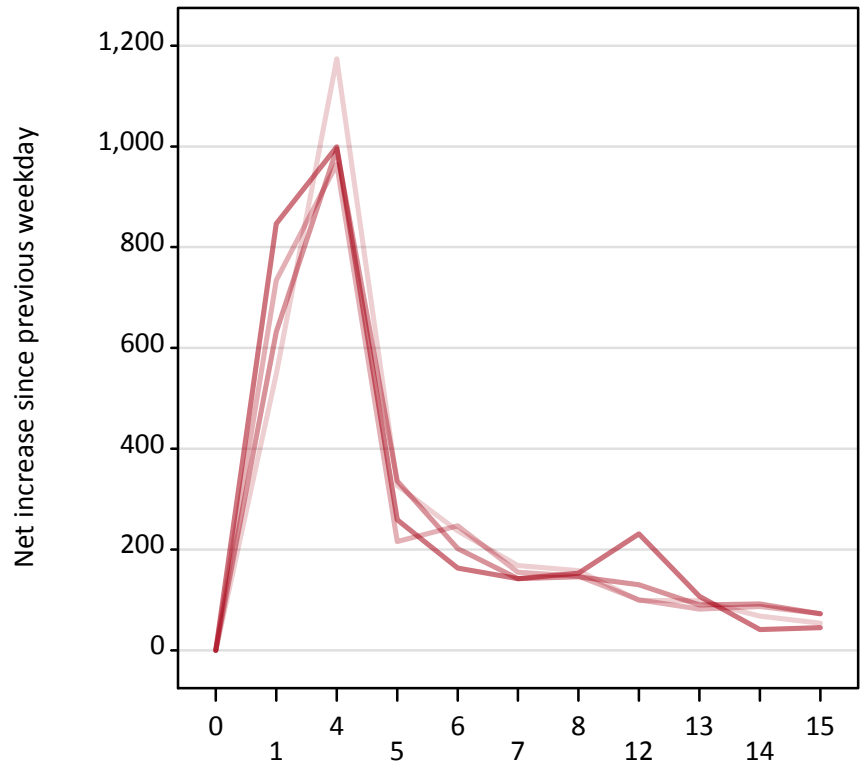
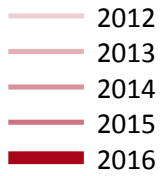
Applicant type	Status	2012	2013	2014	2015	2016
Direct to Clearing	Placed (Direct to Clearing)	80	80	90	80	100
	Other (Direct to Clearing)	250	250	270	290	290

A.17 Direct to Clearing applicants from Wales: A level results day
 Placed (Direct to Clearing): difference between cycle and 2015 cycle

Applicant type	Status	2012	2013	2014	2015	2016
Direct to Clearing	Placed (Direct to Clearing)	-2%	-4%	7%	0%	19%

A.18 All Placed: Daily net change (from Wales)

Net increase since previous weekday (2016 cycle up to A level results day)



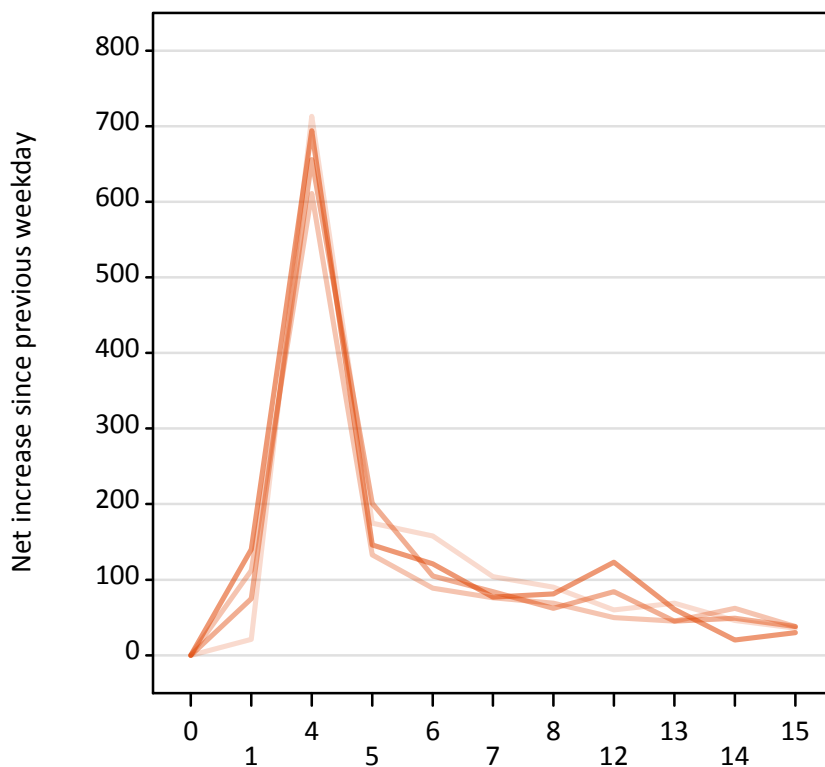
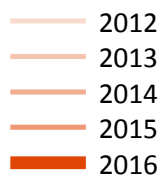
A.19 All Placed: Daily net change (from Wales)

Net increase since previous weekday (2016 cycle up to A level results day)

Applicant status, days since A level results day		2012	2013	2014	2015	2016
All Placed	0	0	0	0	0	0
	1	550	730	630	850	
	4	1,170	970	1,000	1,000	
	5	330	220	340	260	
	6	240	250	200	160	
	7	170	160	140	140	
	8	160	150	150	150	
	12	100	100	130	230	
	13	100	80	90	110	
	14	70	90	90	40	
	15	50	70	70	50	

A.20 Placed through Clearing only: Daily net change (from Wales)

Net increase since previous weekday (2016 cycle up to A level results day)



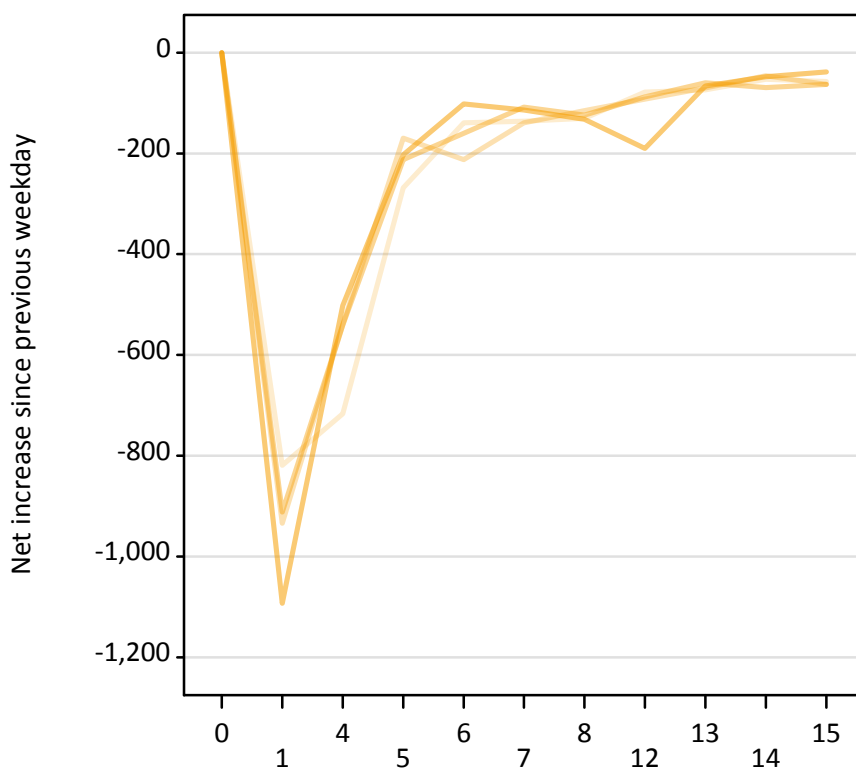
A.21 Placed through Clearing only: Daily net change (from Wales)

Net increase since previous weekday (2016 cycle up to A level results day)

Applicant status, days since A level results day		2012	2013	2014	2015	2016
Placed through Clearing only	0	0	0	0	0	0
	1	20	110	80	140	
	4	710	610	660	690	
	5	180	130	200	150	
	6	160	90	110	120	
	7	100	80	80	80	
	8	90	70	60	80	
	12	60	50	80	120	
	13	70	50	50	60	
	14	50	60	50	20	
	15	40	40	40	30	

A.22 Holding Offer: Daily net change (from Wales)

Net increase since previous weekday (2016 cycle up to A level results day)



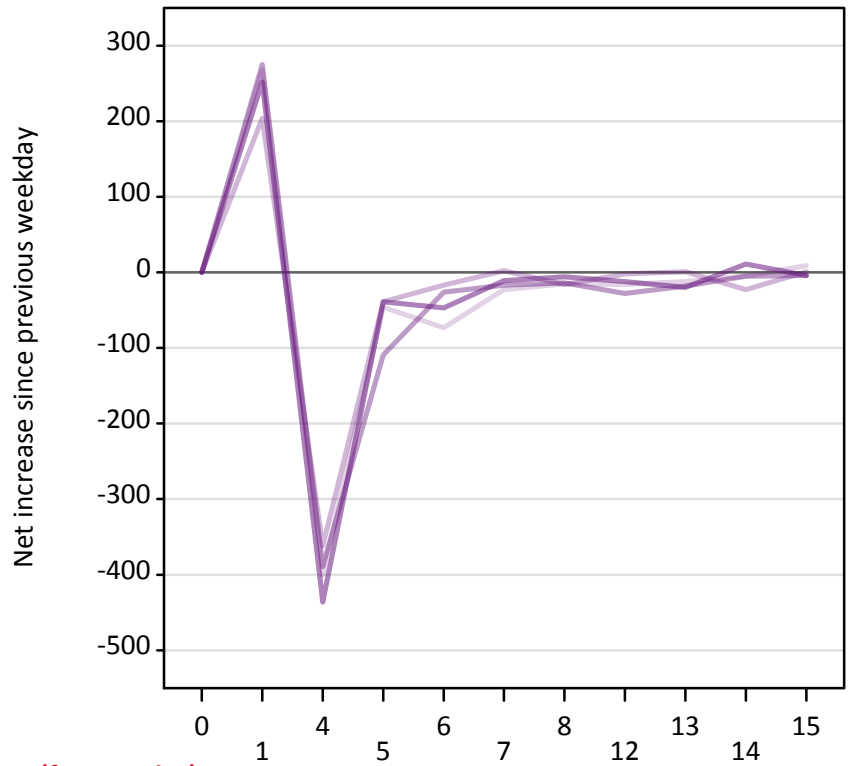
A.23 Holding Offer: Daily net change (from Wales)

Net increase since previous weekday (2016 cycle up to A level results day)

Applicant status, days since A level results day		2012	2013	2014	2015	2016
Holding Offer	0	0	0	0	0	0
	1	-820	-930	-910	-1,090	-930
	4	-720	-540	-540	-500	-540
	5	-270	-170	-210	-200	-170
	6	-140	-210	-160	-100	-210
	7	-140	-140	-110	-110	-140
	8	-130	-120	-120	-130	-120
	12	-80	-90	-90	-190	-90
	13	-70	-70	-60	-70	-70
	14	-50	-50	-70	-50	-50
	15	-60	-60	-60	-40	-60

A.24 Free to be placed in Clearing: Daily net change (from Wales)

Net increase since previous weekday (2016 cycle up to A level results day)



A.25 Free to be placed in Clearing: Daily net change (from Wales)

Net increase since previous weekday (2016 cycle up to A level results day)

Applicant status, days since A level results day		2012	2013	2014	2015	2016
Free to be placed in Clearing	0	0	0	0	0	0
	1	270	200	280	250	
	4	-400	-360	-390	-440	
	5	-50	-40	-110	-40	
	6	-70	-20	-30	-50	
	7	-20	0	-20	-10	
	8	-20	-20	-10	-10	
	12	-20	0	-30	-10	
	13	-10	0	-20	-20	
	14	-10	-20	-10	10	
	15	10	0	0	0	