

E84 University of Exeter

Cycle years: 2010 - 2015

Cycle Reference Point: End of Cycle

Applicant coverage: UK domiciled

Reporting groups: Sex, POLAR3, ethnic group

Applicant statistics: June deadline applicants, placed June deadline applicants, all placed applicants, June deadline applicants per 10,000 population, placed June deadline applicants per 10,000 population, all placed applicants per 10,000 population

Application statistics: June deadline applications, offers, offer rate, average offer rate, percentage point difference between offer rate and average offer rate, contribution of group to the average offer rate

Non-disclosure controls: To avoid the disclosure of information about any individual the following measures are taken

- Applicants, placed applicants, applications and offers are rounded to the nearest 5.
- Applicants/placed applicants per 10,000 population figures are reported as 0 if the applicant/placed applicant figures are rounded to 0.
- All statistics related to the offer rate are not reported when the number of applications for a group is less than 10. The percentage point difference between the offer rate and the average offer rate is not reported when the number of applications for a group is less than 50.
- Offer rates are reported as 0% if there are fewer than 5 offers, and 100% if the number of offers is within 5 of the number of applications. When the offer rate is reported as 0% or 100%, it is reported in italics.

Contents:

18 year old applicants:	P.1
18 year old applications:	P.2
18 year old applicants by sex:	P.3
18 year old applications by sex:	P.4
18 year old applicants by POLAR3 quintile:	P.7
18 year old applications by POLAR3 quintile:	P.8
18 year old applicants by ethnic group:	P.11
18 year old applications by ethnic group:	P.12
Applicants (all ages):	P.15
Applications (all ages):	P.16
Applicants (all ages) by sex:	P.17
Applications (all ages) by sex:	P.18
Applicants (all ages) by POLAR3 quintile:	P.19
Applications (all ages) by POLAR3 quintile:	P.20
Applicants (all ages) by ethnic group:	P.21
Applications (all ages) by ethnic group:	P.22

P.1 18 year old applicants

Statistic	2010	2011	2012	2013	2014	2015
June deadline applicants	17,580	14,755	15,500	19,215	21,050	22,945
Placed June deadline applicants	2,225	2,275	2,410	3,245	3,265	3,195
All placed applicants	2,235	2,330	2,600	3,290	3,390	3,315
June deadline applicants per 10,000 population	222.7	191.6	200.4	252.5	279.5	299.5
Placed June deadline applicants per 10,000	28.2	29.5	31.1	42.6	43.4	41.7
All placed applicants per 10,000 population	28.3	30.3	33.6	43.2	45.0	43.2

P.2 18 year old applications

Statistic	2010	2011	2012	2013	2014	2015
June deadline applications	18,115	15,205	15,925	19,850	21,770	23,750
Offers	12,975	12,275	14,855	17,235	19,280	21,555
Offer rate	71.6%	80.7%	93.3%	86.8%	88.6%	90.8%

P.3 18 year old applicants by sex

Statistic	Sex	2010	2011	2012	2013	2014	2015
June deadline applicants	Men	8,460	6,880	7,130	8,885	10,060	10,710
	Women	9,120	7,880	8,370	10,335	10,990	12,240
Placed June deadline applicants	Men	1,000	1,015	995	1,380	1,445	1,385
	Women	1,220	1,260	1,410	1,865	1,820	1,810
All placed applicants	Men	1,010	1,030	1,080	1,400	1,505	1,440
	Women	1,225	1,305	1,520	1,890	1,885	1,875
June deadline applicants per 10,000 population	Men	210.6	174.8	179.8	227.6	259.8	272.9
	Women	235.1	209.2	222.0	278.8	300.3	327.5
Placed June deadline applicants per 10,000 population	Men	24.9	25.8	25.1	35.3	37.3	35.3
	Women	31.5	33.5	37.5	50.3	49.7	48.5
All placed applicants per 10,000 population	Men	25.1	26.1	27.2	35.9	38.9	36.7
	Women	31.6	34.6	40.4	51.0	51.5	50.1

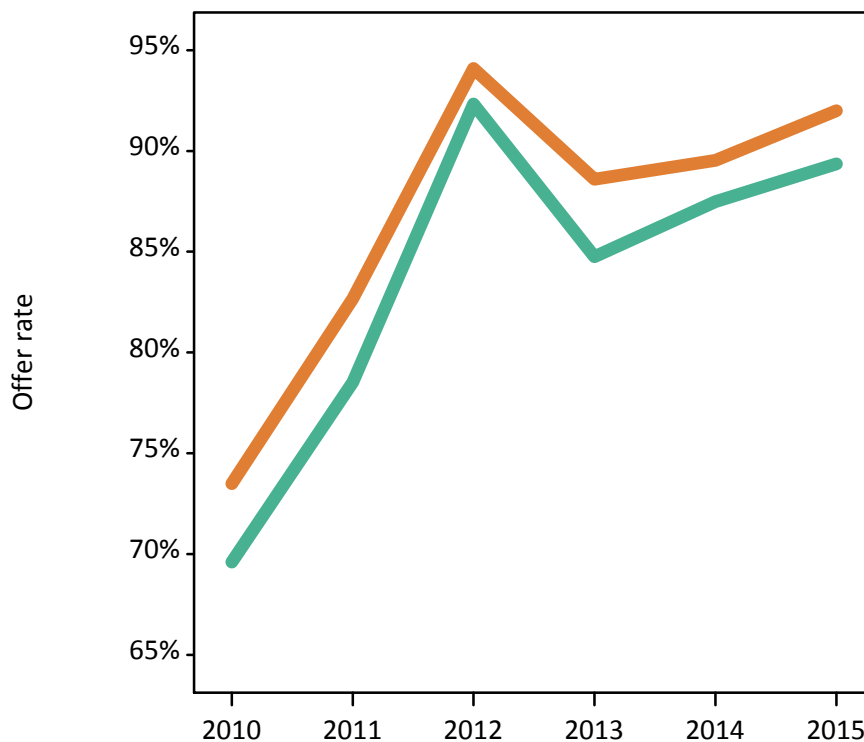
P.4 18 year old applications by sex

Statistic	Sex	2010	2011	2012	2013	2014	2015
June deadline applications	Men	8,715	7,085	7,350	9,150	10,385	11,035
	Women	9,400	8,120	8,575	10,700	11,385	12,715
Offers	Men	6,065	5,565	6,790	7,755	9,085	9,860
	Women	6,910	6,715	8,070	9,480	10,190	11,695
Offer rate	Men	69.6%	78.5%	92.3%	84.8%	87.5%	89.4%
	Women	73.5%	82.7%	94.1%	88.6%	89.5%	92.0%
Average offer rate	Men	71.4%	79.5%	93.1%	85.4%	87.6%	89.6%
	Women	71.9%	81.8%	93.4%	88.1%	89.4%	91.8%
Percentage point difference between offer rate and average offer rate	Men	-1.8	-0.9	-0.8	-0.6	-0.2	-0.3
	Women	1.6	0.8	0.7	0.5	0.2	0.2
Contribution of group to the average offer rate	Men	0.577	0.566	0.557	0.560	0.572	0.567
	Women	0.608	0.622	0.620	0.624	0.610	0.624

P.5 18 year old offer rate by sex

Note: The line for a group is not plotted when that group made fewer than 10 applications in any of the years from 2010-2015.

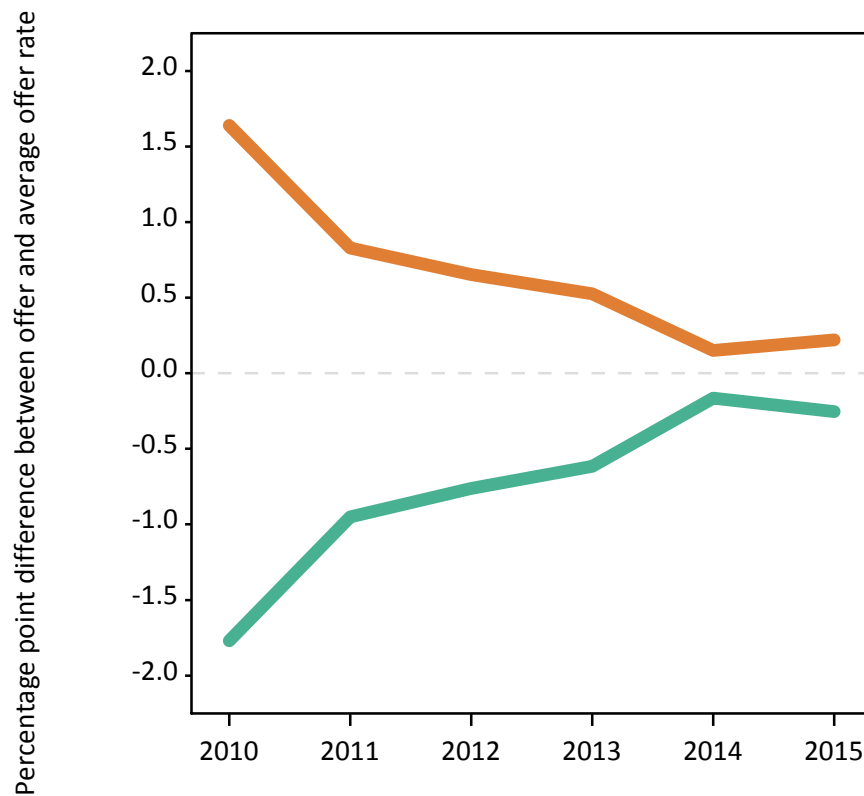
Men
Women



P.6 Percentage point difference between 18 year old offer rate and average offer rate by sex

Note: The line for a group is not plotted when that group made fewer than 50 applications in any of the years from 2010-2015.

Men
Women



P.7 18 year old applicants by POLAR3 quintile

Statistic	POLAR3 quintile	2010	2011	2012	2013	2014	2015
June deadline applicants	Quintile 1	775	660	665	835	1,010	1,170
	Quintile 2	1,545	1,320	1,395	1,630	1,965	2,170
	Quintile 3	2,700	2,205	2,265	2,745	3,140	3,460
	Quintile 4	4,410	3,675	3,880	4,810	5,000	5,610
	Quintile 5	8,100	6,850	7,260	9,150	9,880	10,465
Placed June deadline applicants	Quintile 1	80	90	105	130	140	135
	Quintile 2	180	185	200	265	265	280
	Quintile 3	345	340	335	445	510	480
	Quintile 4	570	595	610	820	785	800
	Quintile 5	1,040	1,060	1,155	1,575	1,555	1,490
All placed applicants	Quintile 1	80	95	110	130	145	140
	Quintile 2	180	190	210	270	285	290
	Quintile 3	350	345	365	450	525	505
	Quintile 4	575	610	670	835	810	835
	Quintile 5	1,045	1,085	1,240	1,600	1,615	1,535
June deadline applicants per 10,000 population	Quintile 1	52.2	46.1	46.7	59.8	72.7	83.7
	Quintile 2	100.5	87.9	93.0	110.8	134.2	146.0
	Quintile 3	169.7	143.4	146.6	179.9	208.5	225.3
	Quintile 4	277.0	234.5	244.5	307.6	324.4	358.5
	Quintile 5	477.9	414.0	432.1	553.4	605.8	625.2
Placed June deadline applicants per 10,000 population	Quintile 1	5.5	6.3	7.4	9.3	10.1	9.6
	Quintile 2	11.8	12.2	13.3	18.1	18.2	18.9
	Quintile 3	21.8	22.0	21.6	29.2	33.8	31.4
	Quintile 4	35.8	38.1	38.5	52.5	50.9	51.0
	Quintile 5	61.3	63.9	68.7	95.4	95.5	89.1
All placed applicants per 10,000 population	Quintile 1	5.5	6.5	7.7	9.3	10.4	10.1
	Quintile 2	11.8	12.7	14.0	18.3	19.3	19.4
	Quintile 3	21.9	22.4	23.6	29.6	35.0	32.8
	Quintile 4	36.0	38.9	42.2	53.4	52.7	53.3
	Quintile 5	61.6	65.6	73.7	96.7	99.1	91.7

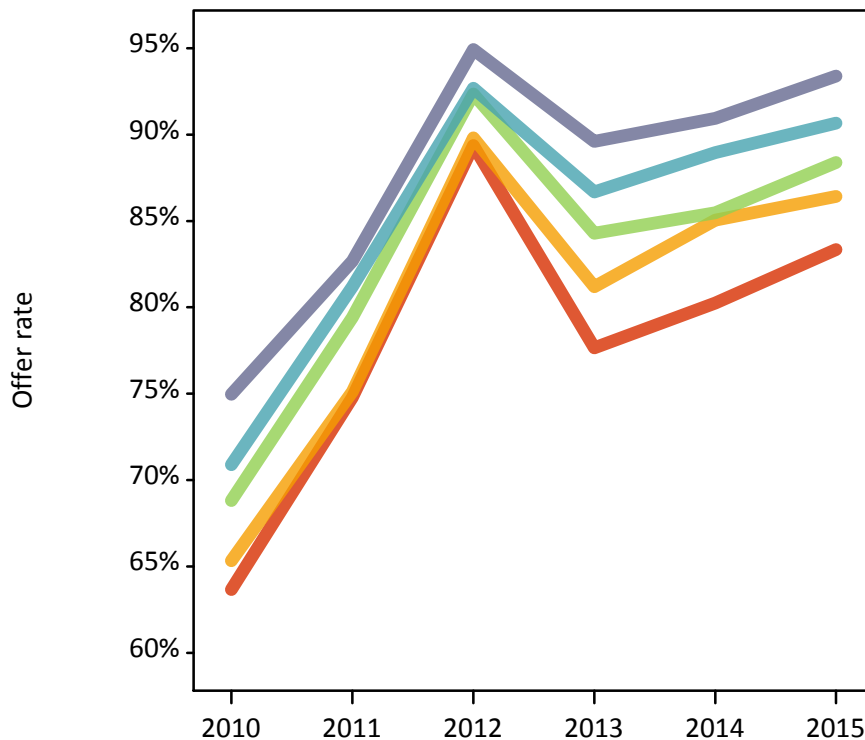
P.8 18 year old applications by POLAR3 quintile

Statistic	POLAR3 quintile	2010	2011	2012	2013	2014	2015
June deadline applications	Quintile 1	810	690	675	875	1,055	1,215
	Quintile 2	1,600	1,380	1,455	1,695	2,040	2,245
	Quintile 3	2,785	2,295	2,340	2,850	3,245	3,605
	Quintile 4	4,555	3,795	3,995	4,975	5,175	5,810
	Quintile 5	8,310	7,005	7,425	9,400	10,195	10,805
Offers	Quintile 1	515	515	605	680	845	1,010
	Quintile 2	1,045	1,035	1,305	1,375	1,735	1,940
	Quintile 3	1,920	1,820	2,165	2,400	2,770	3,185
	Quintile 4	3,230	3,085	3,700	4,315	4,605	5,265
	Quintile 5	6,230	5,790	7,045	8,425	9,275	10,090
Offer rate	Quintile 1	63.7%	74.8%	89.4%	77.7%	80.2%	83.3%
	Quintile 2	65.3%	75.1%	89.8%	81.2%	85.1%	86.4%
	Quintile 3	68.8%	79.4%	92.4%	84.3%	85.5%	88.4%
	Quintile 4	70.9%	81.2%	92.7%	86.7%	89.0%	90.7%
	Quintile 5	75.0%	82.7%	94.9%	89.6%	90.9%	93.4%
Average offer rate	Quintile 1	64.7%	74.9%	89.5%	78.1%	81.7%	85.6%
	Quintile 2	67.0%	75.3%	90.8%	82.6%	85.2%	88.1%
	Quintile 3	69.8%	79.3%	92.0%	84.7%	86.2%	89.3%
	Quintile 4	71.3%	81.1%	93.0%	86.6%	88.6%	90.3%
	Quintile 5	74.0%	82.7%	94.7%	89.2%	90.7%	92.7%
Percentage point difference between offer rate and average offer rate	Quintile 1	-1.0	-0.2	-0.1	-0.5	-1.5	-2.3
	Quintile 2	-1.7	-0.2	-1.0	-1.4	-0.1	-1.7
	Quintile 3	-1.0	0.1	0.3	-0.5	-0.8	-0.9
	Quintile 4	-0.4	0.1	-0.3	0.1	0.3	0.4
	Quintile 5	1.0	-0.0	0.3	0.4	0.2	0.7
Contribution of group to the average offer rate	Quintile 1	0.120	0.115	0.118	0.115	0.110	0.112
	Quintile 2	0.154	0.162	0.154	0.141	0.148	0.139
	Quintile 3	0.207	0.202	0.195	0.186	0.191	0.196
	Quintile 4	0.290	0.292	0.288	0.285	0.271	0.277
	Quintile 5	0.505	0.507	0.511	0.514	0.505	0.495

P.9 18 year old offer rate by POLAR3 quintile

Note: The line for a group is not plotted when that group made fewer than 10 applications in any of the years from 2010-2015.

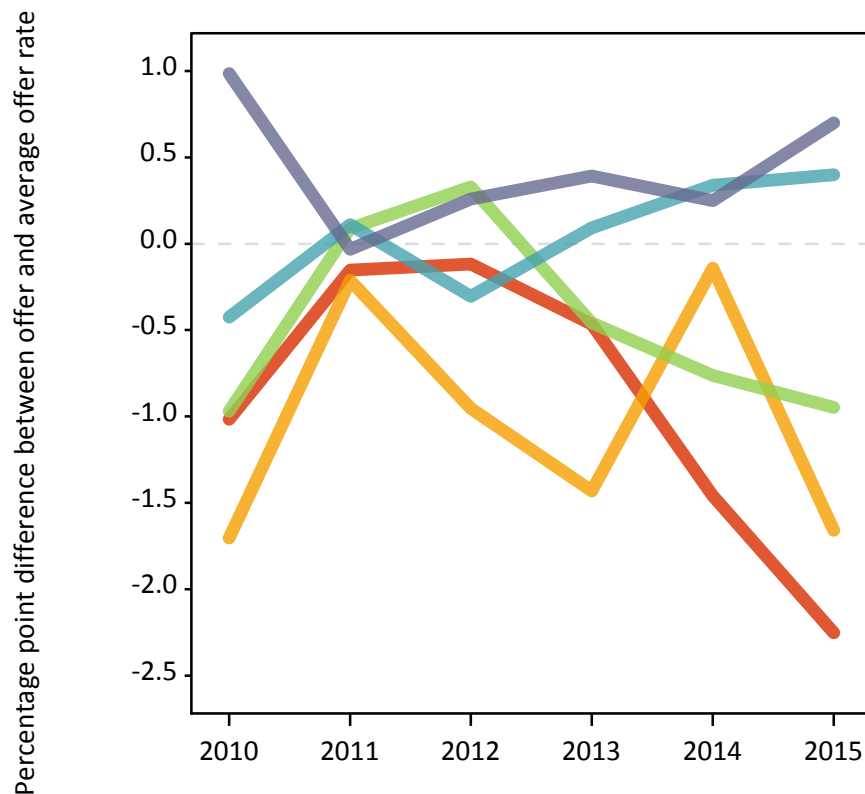
- Quintile 1
- Quintile 2
- Quintile 3
- Quintile 4
- Quintile 5



P.10 Percentage point difference between 18 year old offer rate and average offer rate by POLAR3 quintile

Note: The line for a group is not plotted when that group made fewer than 50 applications in any of the years from 2010-2015.

- Quintile 1
- Quintile 2
- Quintile 3
- Quintile 4
- Quintile 5



P.11 18 year old applicants by ethnic group

Statistic	Ethnic group	2010	2011	2012	2013	2014	2015
June deadline applicants	Asian	520	405	475	795	1,115	1,200
	Black	240	170	240	410	495	630
	Mixed	555	475	610	800	915	1,040
	White	16,015	13,515	13,975	17,005	18,270	19,715
	Other	70	70	100	115	145	170
Placed June deadline applicants	Asian	40	45	45	60	85	85
	Black	20	15	20	30	35	40
	Mixed	65	70	80	110	105	105
	White	2,070	2,125	2,235	3,020	3,015	2,930
	Other	10	5	10	10	10	15
All placed applicants	Asian	40	50	55	65	95	95
	Black	20	15	25	30	35	40
	Mixed	65	75	85	110	120	110
	White	2,085	2,175	2,410	3,060	3,120	3,035
	Other	10	5	10	10	10	15
June deadline applicants per 10,000 population	Asian	84.3	63.9	73.7	120.4	164.7	169.3
	Black	92.1	62.2	84.5	137.8	163.0	198.3
	Mixed	239.1	196.5	233.8	295.5	318.4	337.0
	White	238.8	208.8	216.5	270.3	296.1	316.4
	Other	88.3	85.2	114.1	127.9	156.9	174.5
Placed June deadline applicants per 10,000 population	Asian	6.6	7.0	7.3	9.2	12.8	12.3
	Black	7.3	5.9	7.8	10.4	11.2	12.9
	Mixed	27.2	28.1	30.7	41.1	37.2	33.7
	White	30.9	32.9	34.6	48.0	48.9	47.1
	Other	14.3	4.9	11.3	13.2	9.7	14.5
All placed applicants per 10,000 population	Asian	6.6	7.6	8.8	10.0	14.2	13.4
	Black	7.3	6.2	8.5	10.8	12.2	13.2
	Mixed	27.2	30.6	33.4	41.4	41.4	35.4
	White	31.1	33.6	37.3	48.6	50.5	48.7
	Other	14.3	4.9	11.3	13.2	9.7	15.6

P.12 18 year old applications by ethnic group

Statistic	Ethnic group	2010	2011	2012	2013	2014	2015
June deadline applications	Asian	525	410	485	800	1,135	1,205
	Black	245	170	240	415	500	630
	Mixed	560	480	620	815	940	1,065
	White	16,535	13,945	14,380	17,605	18,935	20,475
	Other	70	70	105	115	150	170
Offers	Asian	385	340	445	615	910	1,050
	Black	150	130	210	295	370	525
	Mixed	390	385	565	705	835	975
	White	11,875	11,270	13,445	15,450	16,950	18,680
	Other	45	55	100	90	115	145
Offer rate	Asian	73.2%	82.8%	91.7%	76.4%	80.4%	86.8%
	Black	62.6%	75.4%	88.3%	71.3%	74.3%	83.0%
	Mixed	69.6%	79.9%	91.5%	86.7%	88.7%	91.4%
	White	71.8%	80.8%	93.5%	87.8%	89.5%	91.2%
	Other	69.1%	78.3%	94.2%	77.8%	75.8%	84.1%
Average offer rate	Asian	72.2%	80.7%	91.5%	78.6%	81.1%	87.3%
	Black	60.9%	72.4%	88.6%	74.1%	77.0%	86.7%
	Mixed	69.9%	80.1%	92.0%	86.6%	88.5%	91.1%
	White	71.8%	80.9%	93.5%	87.6%	89.4%	91.1%
	Other	67.9%	75.2%	89.1%	78.0%	76.1%	88.3%
Percentage point difference between offer rate and average offer rate	Asian	1.0	2.2	0.3	-2.2	-0.7	-0.4
	Black	1.7	3.0	-0.4	-2.8	-2.7	-3.6
	Mixed	-0.3	-0.2	-0.5	0.1	0.3	0.3
	White	-0.0	-0.1	-0.0	0.2	0.1	0.1
	Other	1.3	3.1	5.1	-0.2	-0.3	-4.1
Contribution of group to the average offer rate	Asian	0.115	0.099	0.105	0.111	0.116	0.110
	Black	0.105	0.115	0.098	0.116	0.100	0.087
	Mixed	0.077	0.096	0.093	0.081	0.078	0.082
	White	0.920	0.924	0.911	0.896	0.880	0.871
	Other	0.093	0.119	0.113	0.086	0.044	0.045

P.13 18 year old offer rate by ethnic group

Note: The line for a group is not plotted when that group made fewer than 10 applications in any of the years from 2010-2015.

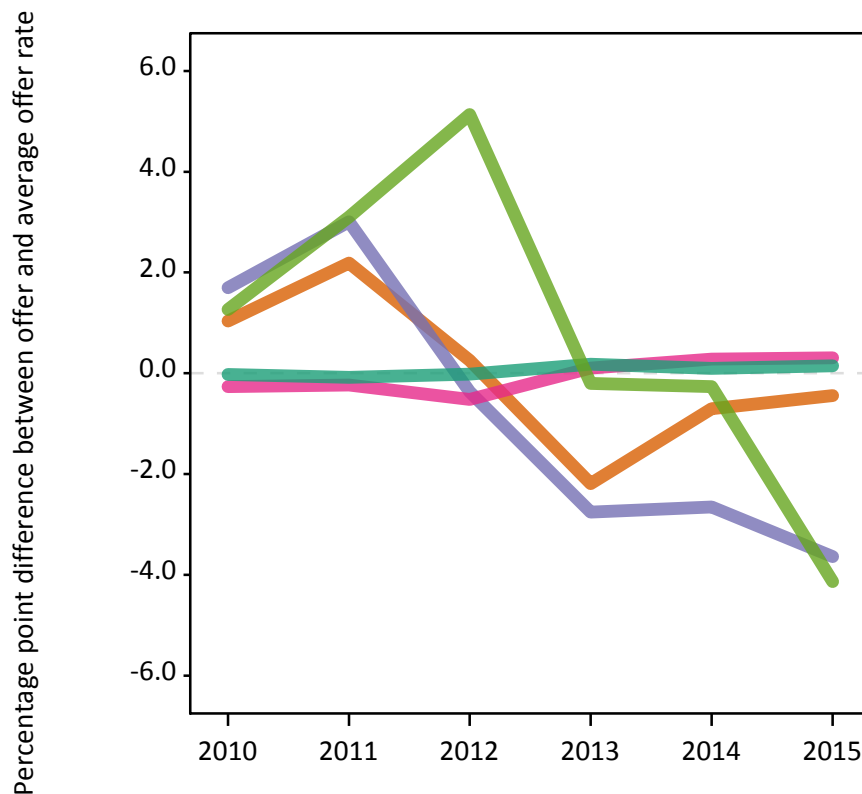
- Asian
- Black
- Mixed
- White
- Other



P.14 Percentage point difference between 18 year old offer rate and average offer rate by ethnic group

Note: The line for a group is not plotted when that group made fewer than 50 applications in any of the years from 2010-2015.

- Asian
- Black
- Mixed
- White
- Other



P.15 Applicants (all ages)

Statistic	2010	2011	2012	2013	2014	2015
June deadline applicants	22,720	19,595	19,365	25,395	27,870	30,035
Placed June deadline applicants	3,115	3,175	3,165	4,295	4,330	4,400
All placed applicants	3,130	3,255	3,410	4,380	4,540	4,590

P.16 Applications (all ages)

Statistic	2010	2011	2012	2013	2014	2015
June deadline applications	23,640	20,395	20,070	26,390	29,025	31,280
Offers	16,070	15,545	17,920	21,370	23,935	26,810
Offer rate	68.0%	76.2%	89.3%	81.0%	82.5%	85.7%

P.17 Applicants (all ages) by sex

Statistic	Sex	2010	2011	2012	2013	2014	2015
June deadline applicants	Men	11,160	9,380	9,190	12,160	13,670	14,460
	Women	11,560	10,220	10,175	13,240	14,200	15,575
Placed June deadline applicants	Men	1,470	1,465	1,395	1,950	1,985	2,005
	Women	1,645	1,710	1,770	2,345	2,350	2,395
All placed applicants	Men	1,475	1,495	1,505	1,990	2,090	2,105
	Women	1,655	1,760	1,900	2,390	2,450	2,490

P.18 Applications (all ages) by sex

Statistic	Sex	2010	2011	2012	2013	2014	2015
June deadline applications	Men	11,605	9,760	9,570	12,615	14,230	15,005
	Women	12,035	10,630	10,500	13,775	14,795	16,280
Offers	Men	7,620	7,210	8,410	9,895	11,490	12,585
	Women	8,450	8,335	9,510	11,475	12,445	14,225
Offer rate	Men	65.7%	73.9%	87.8%	78.5%	80.8%	83.9%
	Women	70.2%	78.4%	90.6%	83.3%	84.1%	87.4%

P.19 Applicants (all ages) by POLAR3 quintile

Statistic	POLAR3 quintile	2010	2011	2012	2013	2014	2015
June deadline applicants	Quintile 1	1,150	1,025	955	1,270	1,515	1,705
	Quintile 2	2,090	1,865	1,845	2,325	2,770	3,050
	Quintile 3	3,540	3,045	2,895	3,760	4,335	4,655
	Quintile 4	5,675	4,865	4,845	6,340	6,670	7,270
	Quintile 5	10,180	8,730	8,765	11,625	12,495	13,260
Placed June deadline applicants	Quintile 1	140	160	165	205	225	220
	Quintile 2	285	300	300	385	405	445
	Quintile 3	495	505	440	630	705	690
	Quintile 4	795	810	795	1,070	1,040	1,090
	Quintile 5	1,390	1,385	1,455	1,995	1,950	1,945
All placed applicants	Quintile 1	140	165	175	215	235	235
	Quintile 2	285	310	320	400	425	465
	Quintile 3	500	515	475	635	740	725
	Quintile 4	805	835	865	1,095	1,085	1,145
	Quintile 5	1,395	1,420	1,560	2,030	2,045	2,010

P.20 Applications (all ages) by POLAR3 quintile

Statistic	POLAR3 quintile	2010	2011	2012	2013	2014	2015
June deadline applications	Quintile 1	1,235	1,090	995	1,350	1,615	1,790
	Quintile 2	2,195	2,000	1,960	2,430	2,910	3,220
	Quintile 3	3,695	3,205	3,020	3,945	4,530	4,885
	Quintile 4	5,910	5,060	5,030	6,600	6,955	7,565
	Quintile 5	10,520	8,970	9,005	11,990	12,935	13,725
Offers	Quintile 1	710	725	810	935	1,150	1,340
	Quintile 2	1,345	1,420	1,655	1,805	2,265	2,545
	Quintile 3	2,380	2,370	2,625	3,050	3,570	4,045
	Quintile 4	4,020	3,890	4,495	5,345	5,740	6,530
	Quintile 5	7,565	7,090	8,290	10,180	11,145	12,275
Offer rate	Quintile 1	57.4%	66.5%	81.0%	69.3%	71.2%	74.8%
	Quintile 2	61.2%	71.1%	84.3%	74.2%	77.8%	79.1%
	Quintile 3	64.4%	74.0%	86.9%	77.3%	78.9%	82.8%
	Quintile 4	68.1%	76.9%	89.3%	81.0%	82.6%	86.3%
	Quintile 5	71.9%	79.0%	92.1%	84.9%	86.2%	89.4%

P.21 Applicants (all ages) by ethnic group

Statistic	Ethnic group	2010	2011	2012	2013	2014	2015
June deadline applicants	Asian	740	590	655	1,355	1,825	1,930
	Black	370	290	370	685	870	1,010
	Mixed	775	690	775	1,065	1,215	1,400
	White	20,480	17,725	17,260	21,905	23,515	25,125
	Other	105	105	160	210	235	265
Placed June deadline applicants	Asian	70	55	65	110	135	150
	Black	25	30	35	60	70	65
	Mixed	100	90	105	140	140	155
	White	2,885	2,965	2,915	3,945	3,950	3,970
	Other	15	10	20	20	15	25
All placed applicants	Asian	70	60	85	115	150	170
	Black	25	30	40	65	80	70
	Mixed	100	100	115	140	155	165
	White	2,900	3,030	3,125	4,025	4,115	4,130
	Other	15	10	20	20	15	30

P.22 Applications (all ages) by ethnic group

Statistic	Ethnic group	2010	2011	2012	2013	2014	2015
June deadline applications	Asian	745	605	670	1,375	1,850	1,960
	Black	375	295	380	695	890	1,010
	Mixed	795	705	795	1,090	1,250	1,440
	White	21,350	18,480	17,920	22,840	24,580	26,290
	Other	105	105	165	215	240	270
Offers	Asian	505	455	565	845	1,230	1,470
	Black	200	180	285	420	560	710
	Mixed	525	510	695	880	1,030	1,255
	White	14,610	14,175	16,105	18,975	20,805	22,915
	Other	60	70	140	125	155	205
Offer rate	Asian	67.7%	74.9%	84.8%	61.4%	66.3%	74.9%
	Black	52.8%	61.2%	75.7%	60.9%	62.9%	70.0%
	Mixed	66.0%	72.2%	87.7%	80.6%	82.5%	87.2%
	White	68.4%	76.7%	89.9%	83.1%	84.7%	87.2%
	Other	56.7%	67.9%	85.4%	58.9%	65.1%	77.0%

Technical Notes and Definitions

UCAS undergraduate scheme

Adjustment

Adjustment allows applicants who have met and exceeded the terms of their conditional firm offer to seek and find a place at another provider whilst keeping their place at their original firm choice provider.

Clearing

Clearing is a route for applicants that are not placed and holding no offers to find a place on courses with vacancies.

Cycle year

The UCAS application cycle which runs from September to October the following year. For example the 2015 cycle runs from September 2014 through to October 2015.

End of cycle

The point in the cycle to which the numbers in this report refer, and the point at which the cycle is closed such that no more applications or offers can be made, and no more applicants can be placed. Numbers reported at the end of cycle exclude information on a small number of applicants who cancelled during the cycle.

Extra

Applicants who are unsuccessful in obtaining an offer or decline all offers may be eligible to apply through Extra, where they can apply to one further course at a time. Extra operates from 25 February until early July. It provides applicants who are eligible the possibility of obtaining an offer before exam results are published and Clearing starts.

June 30 deadline

The deadline for main scheme applications. Applicants who apply after this date will go directly into Clearing.

Record of Prior Acceptance (RPA)

RPA is an acceptance route used when a provider informs UCAS of applicants it has accepted outside of the normal application process (e.g. individuals who have applied directly to the provider).

Reporting groups

Ethnic group

High level grouping of ethnic origin as declared by the applicant: 'White', 'Black', 'Asian', 'Mixed', 'Other', 'Unknown'. Applicants who declare themselves as 'Unknown' ethnic origin are not reported in these tables, but are included in the associated csv data file.

POLAR3 quintile

Developed by HEFCE, POLAR3 classifies small areas across the UK into five groups according to their level of young participation in Higher Education. Each of these groups represents around 20 per cent of young people and is ranked from Quintile 1 (areas with the lowest young participation rates, considered as the most disadvantaged) to Quintile 5 (highest young participation rates, considered most advantaged). POLAR3 is based on the participation rates of young people between 2005 and 2009 who entered Higher Education between 2005-06 and 2010-11, therefore is most suitable for applicants aged 19 and under. These groups are assigned using the postcode declared by the applicant at the time of their application. If a UK postcode is invalid, considered unsafe for measurement or there is no link to Census geography possible then the applicant is not assigned to a quintile. Applicants with no POLAR3 quintile are not reported.

Sex

Sex as declared by the applicant.

SIMD quintile

Scottish index of multiple deprivation (SIMD) for 2012 identifies small area concentrations of multiple deprivation across all of Scotland, providing a relative measure of deprivation amongst 6505 small areas (data zones) based on 7 socio-economic domains. These small areas are classified into five groups ranked from Quintile 1 (considered the most deprived) to Quintile 5 (considered least deprived), with equal populations in each quintile. Quintiles are assigned using the postcode declared by the applicant, applicants declaring invalid postcodes are classified as 'Not assigned' and are not reported.

SIMD is only defined for applicants domiciled in Scotland, therefore any applicants domiciled outside of Scotland cannot be assigned to an SIMD quintile and so are not reported for this measure.

SIMD is only reported for providers in Scotland. Application and entry rates by SIMD are reported in the 2015 End of Cycle Report and the 2016 cycle January deadline application rate report.

Statistics reported in the tables

All placed applicants

The number of applicants placed for entry into higher education at the provider through one of their choices, including any choices made through Extra, or via Adjustment, Clearing or RPA.

All placed applicants per 10,000 population

The number of total UK domiciled 18 year old placed applicants for entry into higher education at the provider divided by the number of UK 18 year olds in the population, multiplied by 10,000. This gives the number of 18 year olds, for every 10,000 in the population, that were placed at the provider through one of their choices, including any choices made through Extra, or via Adjustment, Clearing or RPA. It is an alternative way of expressing the entry rate to a provider. By referencing the underlying population this statistic shows how the number of placed applicants is changing in relation to the available pool of potential applicants and so gives the chance that somebody from the group will be placed at a provider.

This statistic is only reported for 18 year olds.

Average offer rate

The offer rate that you might expect if the predicted grades and subject choice of applicants were the only factors that influenced whether an applicant was made an offer by the provider. The average offer rate is calculated by dividing applicants according to their specific combination of grades (for A levels the best three predicted grades are used, for BTECs, International Baccalaureate and Scottish Highers and Advanced Highers, predicted grades along with any grades already achieved upon applying are used) and subject choice. For each combination the number of main scheme offers is divided by the number of main scheme applications, to give an overall offer rate. This is then multiplied by the number of applications made by the group for which the average offer rate is being calculated (for example POLAR3 quintile 1), to give an average number of offers for that group. These average number of offers are then added together across all combinations of predicted grade and subject and divided by the number of main scheme applications from the group to give the average offer rate.

The average offer rate does not attempt to control for any other factors that may play a part in the decision to make an offer, such as the subject of the qualifications studied, their relevance to a course, or the grade in each subject; higher numbers of A levels being studied; the exact profile of grades predicted; personal statements; teacher references; interviews; or any other criteria (such as work experience or portfolios) that may be part of the admissions decision.

This statistic is only reported for 18 year olds.

Contribution of group to the average offer rate

The way in which the average offer rate is defined means that the pattern of application and offers of a group (for example POLAR3 quintile 1) will always contribute, in part, to the average offer rate for that group. When this contribution is large, the average offer rate will mainly reflect the patterns for the group, meaning that the value of the average offer rate will be similar to the offer rate, the percentage point difference statistic will be small, and any real difference between the offer rate and what might be expected given the predicted grades and subject choices of the applicants will be difficult to detect.

Values of the contribution of group to the average offer rate range between 0 and 1. The closer the value is to 1 the greater the contribution a group makes to its own average offer rate.

This statistic is only reported for 18 year olds.

Placed June deadline applicants

An applicant who has been placed for entry into higher education at the provider through a June deadline application.

Placed June deadline applicants per 10,000 population

The number of UK domiciled 18 year old placed June deadline applicants at the provider divided by the number of UK 18 year olds in the population, multiplied by 10,000. This gives the number of 18 year olds, for every 10,000 in the population, that were placed at the provider through one of their June deadline applications. It is an alternative way of expressing the entry rate to a provider, but for placed June deadline applicants only. By referencing the underlying population this statistic shows how the number of placed June deadline applicants is changing in relation to the available pool of potential 18 year old applicants and so gives the chance that somebody from the group will be placed at a provider through a June deadline application.

This statistic is only reported for 18 year olds.

June deadline applications

An application (or choice) to a course in higher education to the provider that is made by the June 30 deadline. Each applicant can make up to five choices this way. The number of June deadline applications does not include choices made through the following routes: Clearing, Extra, Adjustment and RPAs. Applications made to October deadline courses received after the October deadline are not included in these statistics.

June deadline applicants

The number of applicants that made at least one application to the provider by the June 30 deadline.

June deadline applicants per 10,000 population

The number of UK domiciled 18 year old June deadline applicants to the provider divided by the number of UK 18 year olds in the population, multiplied by 10,000. This gives the number of 18 year olds, for every 10,000 in the population, who applied by the June 30 deadline. It is equivalent to the application rate. By referencing the underlying population this statistic shows how the number of June deadline applicants is changing in relation to the available pool of potential 18 year old applicants and so gives the chance that somebody from the group will apply to a provider by the June 30 deadline.

This statistic is only reported for 18 year olds.

Offers

An offer is defined as a provider's decision in response to an application to offer a place to an applicant, often subject to the applicant satisfying academic and/or other criteria, via a June deadline application (i.e. does not cover choices made through the following routes: Clearing, Extra, Adjustment and RPAs).

Offer rate

The number of offers made divided by the number of June deadline applications. This gives the proportion of all June deadline applications to the provider that received an offer.

Percentage point difference between offer rate and average offer rate

The offer rate minus the average offer rate.

The percentage point difference can be compared to the expected range of statistical variation resulting from the calculation of the average offer rate using the Average Offer Rate Lookup Table. Where the value of the percentage point difference lies outside of this range, the percentage point difference may be considered to represent a real difference between the offer rate and the average offer rate.

Other definitions

Age

This analysis uses country-specific age definitions that align with the cut off points for school and college cohorts within the different administrations of the UK. For England and Wales, ages are defined on the 31 August, for Northern Ireland on the 1 July and for Scotland on the 28 February the following year. Defining ages in this way matches the assignment of children to school cohorts. For applicants outside of the UK a cohort cut off of 31 August has been used.

Provider

A higher education provider - a university or college.

UK domiciled

Declared area of permanent residence within England, Northern Ireland, Scotland and Wales. Applicants from the Channel Islands and Isle of Man are not included.