

Lower tariff providers

Cycle years: 2010 - 2015

Cycle Reference Point: End of Cycle

Applicant coverage: UK domiciled

Reporting groups: Sex, POLAR3, ethnic group

Applicant statistics: June deadline applicants, placed June deadline applicants, all placed applicants, June deadline applicants per 10,000 population, placed June deadline applicants per 10,000 population, all placed applicants per 10,000 population

Application statistics: June deadline applications, offers, offer rate, average offer rate, percentage point difference between offer rate and average offer rate, contribution of group to the average offer rate

Non-disclosure controls: To avoid the disclosure of information about any individual the following measures are taken

- Applicants, placed applicants, applications and offers are rounded to the nearest 5.
- Applicants/placed applicants per 10,000 population figures are reported as 0 if the applicant/placed applicant figures are rounded to 0.
- All statistics related to the offer rate are not reported when the number of applications for a group is less than 10. The percentage point difference between the offer rate and the average offer rate is not reported when the number of applications for a group is less than 50.
- Offer rates are reported as 0% if there are fewer than 5 offers, and 100% if the number of offers is within 5 of the number of applications. When the offer rate is reported as 0% or 100%, it is reported in italics.

Contents:

18 year old applicants:	P.1
18 year old applications:	P.2
18 year old applicants by sex:	P.3
18 year old applications by sex:	P.4
18 year old applicants by POLAR3 quintile:	P.7
18 year old applications by POLAR3 quintile:	P.8
18 year old applicants by ethnic group:	P.11
18 year old applications by ethnic group:	P.12
Applicants (all ages):	P.15
Applications (all ages):	P.16
Applicants (all ages) by sex:	P.17
Applications (all ages) by sex:	P.18
Applicants (all ages) by POLAR3 quintile:	P.19
Applications (all ages) by POLAR3 quintile:	P.20
Applicants (all ages) by ethnic group:	P.21
Applications (all ages) by ethnic group:	P.22

P.1 18 year old applicants

Statistic	2010	2011	2012	2013	2014	2015
June deadline applicants	152,345	159,375	151,175	150,550	158,160	163,455
Placed June deadline applicants	63,440	67,475	61,345	63,600	65,235	67,655
All placed applicants	77,480	85,150	75,505	77,675	80,015	82,595
June deadline applicants per 10,000 population	1,929.5	2,069.5	1,954.4	1,978.4	2,100.0	2,133.5
Placed June deadline applicants per 10,000	803.5	876.2	793.1	835.8	866.2	883.1
All placed applicants per 10,000 population	981.4	1,105.7	976.2	1,020.7	1,062.4	1,078.1

P.2 18 year old applications

Statistic	2010	2011	2012	2013	2014	2015
June deadline applications	391,915	422,740	400,500	393,460	404,080	410,265
Offers	290,650	300,430	292,215	306,360	317,740	326,425
Offer rate	74.2%	71.1%	73.0%	77.9%	78.6%	79.6%

P.3 18 year old applicants by sex

Statistic	Sex	2010	2011	2012	2013	2014	2015
June deadline applicants	Men	63,650	66,965	62,095	62,260	65,865	66,995
	Women	88,690	92,405	89,080	88,290	92,295	96,460
Placed June deadline applicants	Men	26,770	28,870	25,445	27,000	27,830	28,560
	Women	36,665	38,605	35,900	36,605	37,410	39,100
All placed applicants	Men	32,985	36,650	31,530	32,845	34,055	34,725
	Women	44,495	48,500	43,975	44,830	45,960	47,870
June deadline applicants per 10,000 population	Men	1,584.7	1,701.8	1,565.7	1,594.7	1,701.4	1,707.2
	Women	2,286.6	2,453.8	2,363.4	2,382.5	2,521.4	2,581.2
Placed June deadline applicants per 10,000 population	Men	666.5	733.6	641.6	691.5	718.9	727.7
	Women	945.3	1,025.1	952.4	987.8	1,021.9	1,046.2
All placed applicants per 10,000 population	Men	821.3	931.3	795.1	841.3	879.7	884.9
	Women	1,147.1	1,287.8	1,166.6	1,209.8	1,255.6	1,280.9

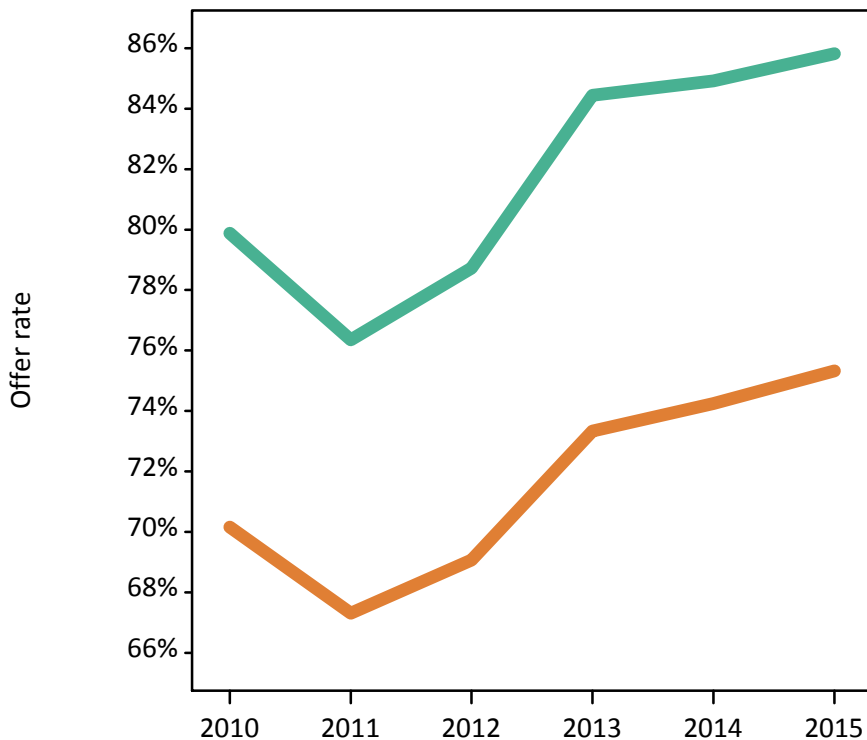
P.4 18 year old applications by sex

Statistic	Sex	2010	2011	2012	2013	2014	2015
June deadline applications	Men	161,585	175,565	161,700	160,540	166,160	165,725
	Women	230,330	247,175	238,800	232,920	237,915	244,545
Offers	Men	129,065	134,050	127,295	135,555	141,110	142,215
	Women	161,590	166,375	164,925	170,810	176,630	184,210
Offer rate	Men	79.9%	76.4%	78.7%	84.4%	84.9%	85.8%
	Women	70.2%	67.3%	69.1%	73.3%	74.2%	75.3%
Average offer rate	Men	79.9%	76.7%	79.0%	84.5%	85.1%	86.0%
	Women	70.2%	67.1%	68.9%	73.3%	74.1%	75.2%
Percentage point difference between offer rate and average offer rate	Men	0.0	-0.3	-0.3	-0.1	-0.2	-0.2
	Women	-0.0	0.2	0.2	0.1	0.1	0.1
Contribution of group to the average offer rate	Men	0.617	0.614	0.609	0.622	0.628	0.623
	Women	0.731	0.726	0.735	0.739	0.740	0.744

P.5 18 year old offer rate by sex

Note: The line for a group is not plotted when that group made fewer than 10 applications in any of the years from 2010-2015.

Men
Women



P.6 Percentage point difference between 18 year old offer rate and average offer rate by sex

Note: The line for a group is not plotted when that group made fewer than 50 applications in any of the years from 2010-2015.

Men
Women



P.7 18 year old applicants by POLAR3 quintile

Statistic	POLAR3 quintile	2010	2011	2012	2013	2014	2015
June deadline applicants	Quintile 1	20,350	21,010	20,235	20,515	22,745	23,550
	Quintile 2	27,085	28,510	27,210	27,595	29,545	30,645
	Quintile 3	32,370	33,645	32,375	32,335	34,095	35,290
	Quintile 4	35,565	37,230	34,800	34,620	35,650	36,870
	Quintile 5	36,670	38,685	36,300	35,235	35,840	36,720
Placed June deadline applicants	Quintile 1	9,080	9,565	9,085	9,620	10,295	10,575
	Quintile 2	11,920	12,605	11,910	12,485	13,025	13,395
	Quintile 3	13,895	14,630	13,510	14,075	14,445	15,140
	Quintile 4	14,490	15,460	13,635	14,170	14,305	14,795
	Quintile 5	13,940	15,110	13,105	13,145	13,040	13,600
All placed applicants	Quintile 1	10,655	11,505	10,870	11,490	12,310	12,615
	Quintile 2	14,300	15,520	14,435	15,015	15,790	16,165
	Quintile 3	17,070	18,665	16,840	17,295	17,760	18,705
	Quintile 4	17,745	19,625	16,830	17,370	17,630	18,025
	Quintile 5	17,560	19,695	16,395	16,355	16,370	16,870
June deadline applicants per 10,000 population	Quintile 1	1,374.9	1,461.6	1,420.3	1,471.9	1,634.4	1,680.7
	Quintile 2	1,761.5	1,896.5	1,814.7	1,872.9	2,019.3	2,063.3
	Quintile 3	2,035.5	2,186.4	2,096.5	2,120.2	2,265.4	2,298.1
	Quintile 4	2,233.3	2,376.9	2,192.9	2,213.5	2,313.2	2,355.2
	Quintile 5	2,163.8	2,337.1	2,160.8	2,131.0	2,197.6	2,193.4
Placed June deadline applicants per 10,000 population	Quintile 1	613.6	665.4	637.6	690.4	739.9	754.9
	Quintile 2	775.1	838.4	794.4	847.2	890.2	901.7
	Quintile 3	873.7	950.7	874.8	923.0	959.9	985.8
	Quintile 4	910.0	987.1	859.2	906.1	928.3	945.2
	Quintile 5	822.6	912.9	780.2	795.0	799.6	812.3
All placed applicants per 10,000 population	Quintile 1	720.0	800.3	763.0	824.4	884.7	900.5
	Quintile 2	930.1	1,032.3	962.7	1,019.1	1,079.3	1,088.3
	Quintile 3	1,073.3	1,212.9	1,090.5	1,134.1	1,180.0	1,218.3
	Quintile 4	1,114.2	1,252.8	1,060.7	1,110.6	1,143.9	1,151.5
	Quintile 5	1,036.1	1,189.9	975.9	989.2	1,003.8	1,007.8

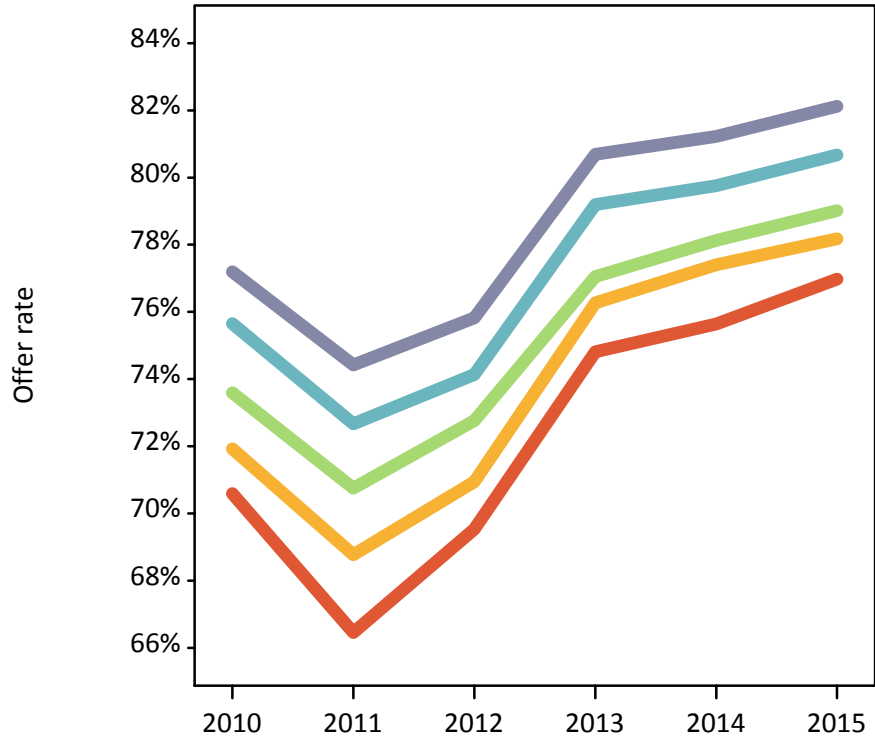
P.8 18 year old applications by POLAR3 quintile

Statistic	POLAR3 quintile	2010	2011	2012	2013	2014	2015
June deadline applications	Quintile 1	54,115	58,100	55,975	55,455	60,445	61,330
	Quintile 2	71,960	78,220	74,730	74,725	77,820	79,610
	Quintile 3	85,635	91,885	88,530	87,385	89,635	91,160
	Quintile 4	90,610	97,790	90,650	89,455	89,850	91,195
	Quintile 5	88,880	95,980	89,950	85,765	85,590	86,015
Offers	Quintile 1	38,200	38,605	38,920	41,490	45,725	47,210
	Quintile 2	51,755	53,790	53,015	56,990	60,235	62,235
	Quintile 3	63,020	65,015	64,420	67,330	70,025	72,035
	Quintile 4	68,545	71,065	67,200	70,840	71,660	73,570
	Quintile 5	68,610	71,430	68,200	69,205	69,520	70,640
Offer rate	Quintile 1	70.6%	66.4%	69.5%	74.8%	75.6%	77.0%
	Quintile 2	71.9%	68.8%	70.9%	76.3%	77.4%	78.2%
	Quintile 3	73.6%	70.8%	72.8%	77.0%	78.1%	79.0%
	Quintile 4	75.6%	72.7%	74.1%	79.2%	79.8%	80.7%
	Quintile 5	77.2%	74.4%	75.8%	80.7%	81.2%	82.1%
Average offer rate	Quintile 1	71.5%	67.7%	70.3%	75.8%	77.0%	78.0%
	Quintile 2	72.7%	69.3%	71.3%	76.5%	77.6%	78.6%
	Quintile 3	73.7%	71.0%	73.0%	77.3%	78.3%	79.2%
	Quintile 4	75.3%	72.3%	73.8%	78.6%	79.3%	80.2%
	Quintile 5	76.3%	73.4%	75.1%	80.2%	80.4%	81.2%
Percentage point difference between offer rate and average offer rate	Quintile 1	-0.9	-1.3	-0.8	-1.0	-1.3	-1.1
	Quintile 2	-0.8	-0.6	-0.4	-0.3	-0.2	-0.4
	Quintile 3	-0.1	-0.2	-0.3	-0.3	-0.2	-0.2
	Quintile 4	0.4	0.4	0.3	0.6	0.4	0.4
	Quintile 5	0.9	1.0	0.7	0.5	0.8	0.9
Contribution of group to the average offer rate	Quintile 1	0.250	0.245	0.248	0.251	0.254	0.252
	Quintile 2	0.279	0.275	0.279	0.283	0.282	0.282
	Quintile 3	0.305	0.300	0.304	0.304	0.301	0.302
	Quintile 4	0.318	0.314	0.312	0.314	0.307	0.306
	Quintile 5	0.330	0.327	0.326	0.323	0.318	0.315

P.9 18 year old offer rate by POLAR3 quintile

Note: The line for a group is not plotted when that group made fewer than 10 applications in any of the years from 2010-2015.

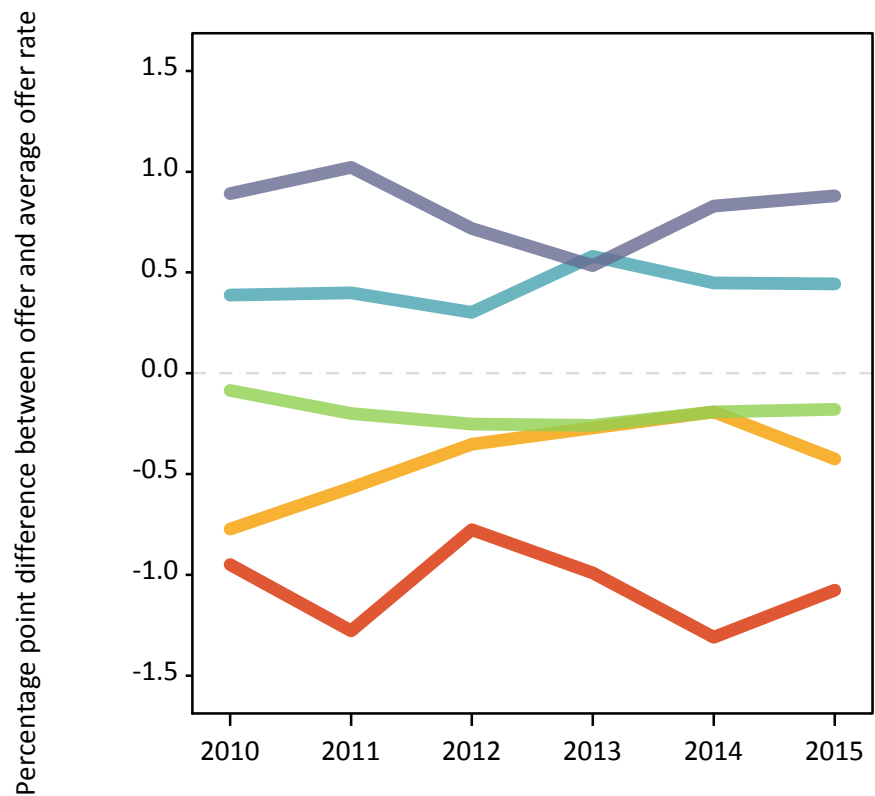
- Quintile 1
- Quintile 2
- Quintile 3
- Quintile 4
- Quintile 5



P.10 Percentage point difference between 18 year old offer rate and average offer rate by POLAR3 quintile

Note: The line for a group is not plotted when that group made fewer than 50 applications in any of the years from 2010-2015.

- Quintile 1
- Quintile 2
- Quintile 3
- Quintile 4
- Quintile 5



P.11 18 year old applicants by ethnic group

Statistic	Ethnic group	2010	2011	2012	2013	2014	2015
June deadline applicants	Asian	14,620	16,265	16,220	16,525	17,640	18,815
	Black	6,815	7,845	7,910	8,770	9,075	9,940
	Mixed	4,565	5,140	4,935	5,090	5,610	6,230
	White	124,375	128,020	119,845	117,865	123,245	125,485
	Other	1,335	1,500	1,755	1,820	2,085	2,295
Placed June deadline applicants	Asian	6,130	6,780	6,440	7,080	7,375	7,860
	Black	2,755	3,240	3,220	3,685	3,645	4,035
	Mixed	1,905	2,150	1,970	2,070	2,290	2,570
	White	51,850	54,440	48,825	49,840	50,890	51,950
	Other	560	640	690	745	865	960
All placed applicants	Asian	8,940	10,495	9,540	9,985	10,580	11,125
	Black	4,265	5,280	4,875	5,440	5,390	5,995
	Mixed	2,420	2,905	2,480	2,620	2,900	3,245
	White	60,560	65,050	57,185	58,150	59,500	60,375
	Other	820	1,000	1,045	1,080	1,240	1,380
June deadline applicants per 10,000 population	Asian	2,364.9	2,580.8	2,504.3	2,505.3	2,601.0	2,658.7
	Black	2,603.8	2,869.8	2,809.4	2,954.0	2,994.3	3,123.5
	Mixed	1,971.2	2,123.0	1,895.0	1,881.8	1,949.6	2,021.1
	White	1,854.5	1,977.3	1,856.1	1,873.2	1,997.7	2,013.9
	Other	1,734.0	1,849.4	1,982.2	2,009.3	2,240.1	2,381.1
Placed June deadline applicants per 10,000 population	Asian	991.6	1,075.5	994.7	1,073.2	1,087.3	1,111.0
	Black	1,052.5	1,185.1	1,143.5	1,240.5	1,202.9	1,268.1
	Mixed	822.2	887.3	756.3	764.9	795.6	833.3
	White	773.1	840.9	756.2	792.1	824.8	833.7
	Other	724.8	790.1	777.5	823.8	927.2	994.8
All placed applicants per 10,000 population	Asian	1,445.8	1,665.4	1,472.8	1,514.2	1,560.2	1,572.2
	Black	1,628.5	1,931.6	1,730.9	1,831.7	1,778.2	1,884.7
	Mixed	1,044.5	1,198.6	951.7	968.6	1,007.3	1,051.9
	White	903.0	1,004.7	885.6	924.2	964.4	968.9
	Other	1,067.7	1,237.1	1,183.2	1,188.8	1,332.2	1,432.0

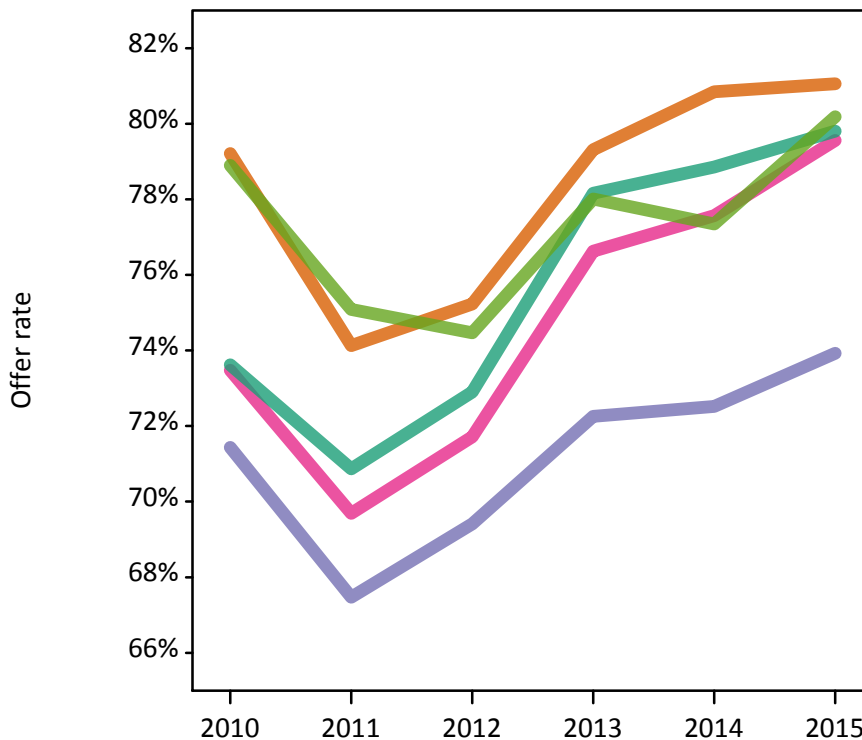
P.12 18 year old applications by ethnic group

Statistic	Ethnic group	2010	2011	2012	2013	2014	2015
June deadline applications	Asian	41,160	48,080	48,610	48,975	50,620	52,850
	Black	19,635	23,405	23,915	25,920	26,050	27,710
	Mixed	12,110	14,020	13,245	13,475	14,525	15,750
	White	313,735	331,340	308,350	298,445	305,670	305,955
	Other	3,705	4,360	5,085	5,340	5,960	6,240
Offers	Asian	32,605	35,640	36,570	38,845	40,925	42,845
	Black	14,025	15,790	16,600	18,730	18,895	20,485
	Mixed	8,900	9,770	9,500	10,325	11,270	12,530
	White	230,975	234,825	224,785	233,270	241,030	244,170
	Other	2,925	3,275	3,785	4,165	4,610	5,005
Offer rate	Asian	79.2%	74.1%	75.2%	79.3%	80.9%	81.1%
	Black	71.4%	67.5%	69.4%	72.3%	72.5%	73.9%
	Mixed	73.5%	69.7%	71.7%	76.6%	77.6%	79.6%
	White	73.6%	70.9%	72.9%	78.2%	78.9%	79.8%
	Other	78.9%	75.1%	74.5%	78.0%	77.3%	80.2%
Average offer rate	Asian	79.9%	75.4%	76.4%	80.4%	81.6%	81.8%
	Black	74.2%	70.6%	73.0%	75.2%	75.7%	76.6%
	Mixed	73.6%	70.9%	73.0%	77.5%	78.1%	80.0%
	White	73.3%	70.4%	72.3%	77.7%	78.4%	79.4%
	Other	79.1%	76.6%	77.0%	79.5%	80.1%	81.5%
Percentage point difference between offer rate and average offer rate	Asian	-0.7	-1.3	-1.1	-1.1	-0.7	-0.8
	Black	-2.8	-3.1	-3.6	-3.0	-3.2	-2.7
	Mixed	-0.1	-1.2	-1.3	-0.9	-0.5	-0.4
	White	0.3	0.5	0.6	0.5	0.5	0.4
	Other	-0.2	-1.5	-2.5	-1.5	-2.7	-1.3
Contribution of group to the average offer rate	Asian	0.361	0.353	0.359	0.353	0.346	0.344
	Black	0.216	0.216	0.217	0.223	0.212	0.212
	Mixed	0.135	0.137	0.135	0.136	0.137	0.139
	White	0.867	0.854	0.845	0.837	0.832	0.824
	Other	0.135	0.128	0.141	0.132	0.139	0.136

P.13 18 year old offer rate by ethnic group

Note: The line for a group is not plotted when that group made fewer than 10 applications in any of the years from 2010-2015.

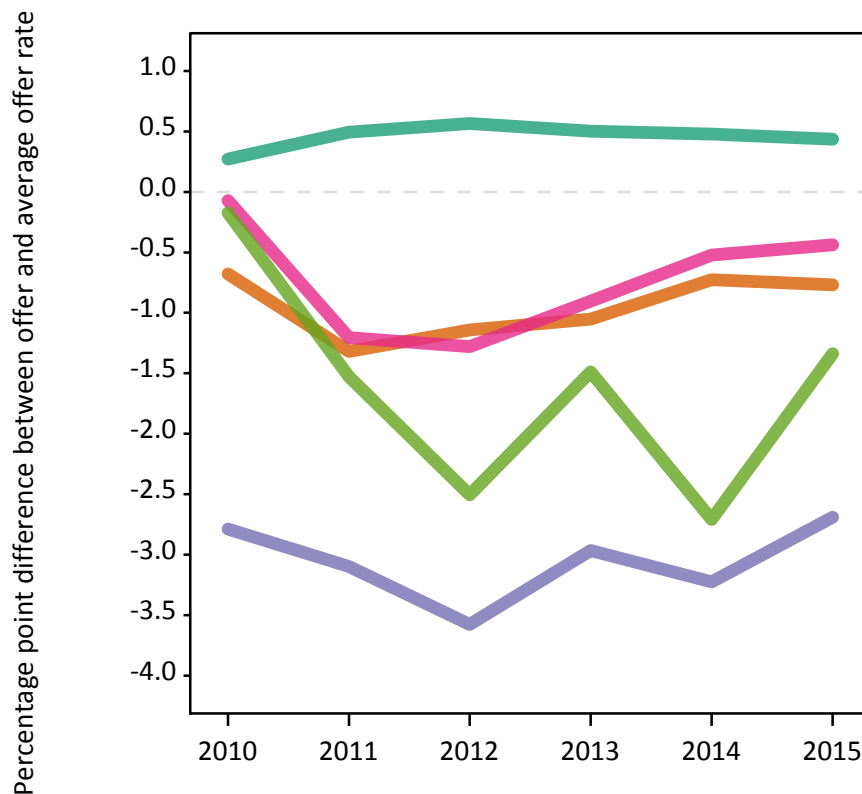
- Asian
- Black
- Mixed
- White
- Other



P.14 Percentage point difference between 18 year old offer rate and average offer rate by ethnic group

Note: The line for a group is not plotted when that group made fewer than 50 applications in any of the years from 2010-2015.

- Asian
- Black
- Mixed
- White
- Other



P.15 Applicants (all ages)

Statistic	2010	2011	2012	2013	2014	2015
June deadline applicants	351,290	368,825	333,730	338,570	356,815	356,580
Placed June deadline applicants	151,720	158,275	140,105	149,470	153,730	154,530
All placed applicants	191,995	202,750	183,600	196,535	204,645	205,805

P.16 Applications (all ages)

Statistic	2010	2011	2012	2013	2014	2015
June deadline applications	885,790	968,485	878,085	875,255	903,385	888,485
Offers	542,610	563,780	531,020	569,705	593,835	600,635
Offer rate	61.3%	58.2%	60.5%	65.1%	65.7%	67.6%

P.17 Applicants (all ages) by sex

Statistic	Sex	2010	2011	2012	2013	2014	2015
June deadline applicants	Men	144,110	152,590	135,010	137,225	144,505	143,860
	Women	207,180	216,235	198,720	201,345	212,310	212,715
Placed June deadline applicants	Men	64,140	68,125	58,885	63,745	64,985	64,665
	Women	87,580	90,150	81,220	85,730	88,740	89,865
All placed applicants	Men	83,000	88,650	78,915	85,085	87,805	87,125
	Women	108,990	114,105	104,685	111,450	116,845	118,680

P.18 Applications (all ages) by sex

Statistic	Sex	2010	2011	2012	2013	2014	2015
June deadline applications	Men	366,175	402,855	355,720	354,320	364,220	355,880
	Women	519,615	565,630	522,370	520,935	539,165	532,605
Offers	Men	247,545	258,720	239,830	259,165	268,935	267,995
	Women	295,065	305,060	291,190	310,540	324,895	332,640
Offer rate	Men	67.6%	64.2%	67.4%	73.1%	73.8%	75.3%
	Women	56.8%	53.9%	55.7%	59.6%	60.3%	62.5%

P.19 Applicants (all ages) by POLAR3 quintile

Statistic	POLAR3 quintile	2010	2011	2012	2013	2014	2015
June deadline applicants	Quintile 1	51,280	54,605	50,985	52,190	56,975	56,610
	Quintile 2	64,530	67,920	62,335	63,725	68,405	68,455
	Quintile 3	77,125	80,950	73,615	74,550	78,420	78,280
	Quintile 4	78,635	81,860	73,180	74,375	77,250	77,125
	Quintile 5	78,710	82,515	72,760	73,005	74,985	75,055
Placed June deadline applicants	Quintile 1	23,010	24,385	22,715	24,745	26,210	26,015
	Quintile 2	28,870	30,250	27,595	29,510	30,980	30,900
	Quintile 3	33,745	34,975	31,270	33,150	34,100	34,545
	Quintile 4	33,505	34,730	29,910	32,155	32,490	32,600
	Quintile 5	32,210	33,575	28,295	29,625	29,645	30,035
All placed applicants	Quintile 1	28,230	29,960	28,810	31,470	33,555	33,455
	Quintile 2	36,055	37,800	35,615	38,120	40,440	40,425
	Quintile 3	43,265	45,675	41,845	44,590	46,630	47,340
	Quintile 4	42,480	44,760	39,300	42,295	43,540	43,505
	Quintile 5	41,365	44,045	37,415	39,475	39,975	40,275

P.20 Applications (all ages) by POLAR3 quintile

Statistic	POLAR3 quintile	2010	2011	2012	2013	2014	2015
June deadline applications	Quintile 1	128,885	143,555	134,875	134,875	144,760	142,315
	Quintile 2	165,145	181,510	167,220	168,210	176,095	174,060
	Quintile 3	201,355	219,950	200,930	200,095	205,710	202,175
	Quintile 4	197,570	214,305	190,800	191,435	194,185	190,085
	Quintile 5	190,420	206,680	182,060	178,790	180,675	177,290
Offers	Quintile 1	74,460	77,615	76,695	83,460	91,235	92,135
	Quintile 2	98,030	102,430	98,275	106,840	113,905	115,555
	Quintile 3	120,575	124,840	119,185	127,245	132,250	133,715
	Quintile 4	124,475	128,735	118,215	128,065	130,280	131,555
	Quintile 5	123,715	128,900	117,500	122,995	124,945	126,125
Offer rate	Quintile 1	57.8%	54.1%	56.9%	61.9%	63.0%	64.7%
	Quintile 2	59.4%	56.4%	58.8%	63.5%	64.7%	66.4%
	Quintile 3	59.9%	56.8%	59.3%	63.6%	64.3%	66.1%
	Quintile 4	63.0%	60.1%	62.0%	66.9%	67.1%	69.2%
	Quintile 5	65.0%	62.4%	64.5%	68.8%	69.2%	71.1%

P.21 Applicants (all ages) by ethnic group

Statistic	Ethnic group	2010	2011	2012	2013	2014	2015
June deadline applicants	Asian	35,660	39,655	37,600	38,035	40,095	41,700
	Black	35,040	38,270	36,340	35,800	37,285	37,900
	Mixed	12,385	13,485	12,275	12,620	14,015	14,645
	White	261,690	270,440	240,135	244,740	257,435	253,530
	Other	4,145	4,520	5,365	5,310	5,950	6,195
Placed June deadline applicants	Asian	14,995	16,525	15,240	16,545	16,925	17,505
	Black	12,785	13,775	13,115	13,735	14,070	14,395
	Mixed	5,280	5,775	5,140	5,495	6,040	6,365
	White	116,045	119,415	103,705	110,715	113,515	112,645
	Other	1,650	1,820	2,120	2,135	2,395	2,560
All placed applicants	Asian	22,455	25,350	23,515	24,760	25,920	26,760
	Black	19,330	21,800	21,780	22,535	24,985	25,180
	Mixed	6,890	7,700	6,950	7,530	8,395	8,755
	White	137,075	142,380	125,470	134,925	138,210	137,300
	Other	2,560	2,825	3,430	3,555	4,025	4,300

P.22 Applications (all ages) by ethnic group

Statistic	Ethnic group	2010	2011	2012	2013	2014	2015
June deadline applications	Asian	101,590	118,285	113,335	112,650	115,000	116,480
	Black	103,590	117,520	112,890	109,825	112,450	111,825
	Mixed	32,655	36,950	33,415	33,800	36,385	37,315
	White	630,335	676,255	597,520	598,255	617,765	599,570
	Other	11,610	13,060	15,720	15,380	16,740	16,855
Offers	Asian	67,545	73,400	72,915	77,705	80,275	82,480
	Black	44,290	45,795	46,785	49,450	51,150	52,985
	Mixed	19,155	20,850	19,655	21,345	23,470	25,005
	White	401,105	412,690	379,330	408,175	425,175	425,120
	Other	7,080	7,640	9,480	9,905	10,890	11,215
Offer rate	Asian	66.5%	62.1%	64.3%	69.0%	69.8%	70.8%
	Black	42.8%	39.0%	41.4%	45.0%	45.5%	47.4%
	Mixed	58.7%	56.4%	58.8%	63.2%	64.5%	67.0%
	White	63.6%	61.0%	63.5%	68.2%	68.8%	70.9%
	Other	61.0%	58.5%	60.3%	64.4%	65.1%	66.5%

Technical Notes and Definitions

UCAS undergraduate scheme

Adjustment

Adjustment allows applicants who have met and exceeded the terms of their conditional firm offer to seek and find a place at another provider whilst keeping their place at their original firm choice provider.

Clearing

Clearing is a route for applicants that are not placed and holding no offers to find a place on courses with vacancies.

Cycle year

The UCAS application cycle which runs from September to October the following year. For example the 2015 cycle runs from September 2014 through to October 2015.

End of cycle

The point in the cycle to which the numbers in this report refer, and the point at which the cycle is closed such that no more applications or offers can be made, and no more applicants can be placed. Numbers reported at the end of cycle exclude information on a small number of applicants who cancelled during the cycle.

Extra

Applicants who are unsuccessful in obtaining an offer or decline all offers may be eligible to apply through Extra, where they can apply to one further course at a time. Extra operates from 25 February until early July. It provides applicants who are eligible the possibility of obtaining an offer before exam results are published and Clearing starts.

June 30 deadline

The deadline for main scheme applications. Applicants who apply after this date will go directly into Clearing.

Record of Prior Acceptance (RPA)

RPA is an acceptance route used when a provider informs UCAS of applicants it has accepted outside of the normal application process (e.g. individuals who have applied directly to the provider).

Reporting groups

Ethnic group

High level grouping of ethnic origin as declared by the applicant: 'White', 'Black', 'Asian', 'Mixed', 'Other', 'Unknown'. Applicants who declare themselves as 'Unknown' ethnic origin are not reported in these tables, but are included in the associated csv data file.

POLAR3 quintile

Developed by HEFCE, POLAR3 classifies small areas across the UK into five groups according to their level of young participation in Higher Education. Each of these groups represents around 20 per cent of young people and is ranked from Quintile 1 (areas with the lowest young participation rates, considered as the most disadvantaged) to Quintile 5 (highest young participation rates, considered most advantaged). POLAR3 is based on the participation rates of young people between 2005 and 2009 who entered Higher Education between 2005-06 and 2010-11, therefore is most suitable for applicants aged 19 and under. These groups are assigned using the postcode declared by the applicant at the time of their application. If a UK postcode is invalid, considered unsafe for measurement or there is no link to Census geography possible then the applicant is not assigned to a quintile. Applicants with no POLAR3 quintile are not reported.

Sex

Sex as declared by the applicant.

SIMD quintile

Scottish index of multiple deprivation (SIMD) for 2012 identifies small area concentrations of multiple deprivation across all of Scotland, providing a relative measure of deprivation amongst 6505 small areas (data zones) based on 7 socio-economic domains. These small areas are classified into five groups ranked from Quintile 1 (considered the most deprived) to Quintile 5 (considered least deprived), with equal populations in each quintile. Quintiles are assigned using the postcode declared by the applicant, applicants declaring invalid postcodes are classified as 'Not assigned' and are not reported.

SIMD is only defined for applicants domiciled in Scotland, therefore any applicants domiciled outside of Scotland cannot be assigned to an SIMD quintile and so are not reported for this measure.

SIMD is only reported for providers in Scotland. Application and entry rates by SIMD are reported in the 2015 End of Cycle Report and the 2016 cycle January deadline application rate report.

Statistics reported in the tables

All placed applicants

The number of applicants placed for entry into higher education at the provider through one of their choices, including any choices made through Extra, or via Adjustment, Clearing or RPA.

All placed applicants per 10,000 population

The number of total UK domiciled 18 year old placed applicants for entry into higher education at the provider divided by the number of UK 18 year olds in the population, multiplied by 10,000. This gives the number of 18 year olds, for every 10,000 in the population, that were placed at the provider through one of their choices, including any choices made through Extra, or via Adjustment, Clearing or RPA. It is an alternative way of expressing the entry rate to a provider. By referencing the underlying population this statistic shows how the number of placed applicants is changing in relation to the available pool of potential applicants and so gives the chance that somebody from the group will be placed at a provider.

This statistic is only reported for 18 year olds.

Average offer rate

The offer rate that you might expect if the predicted grades and subject choice of applicants were the only factors that influenced whether an applicant was made an offer by the provider. The average offer rate is calculated by dividing applicants according to their specific combination of grades (for A levels the best three predicted grades are used, for BTECs, International Baccalaureate and Scottish Highers and Advanced Highers, predicted grades along with any grades already achieved upon applying are used) and subject choice. For each combination the number of main scheme offers is divided by the number of main scheme applications, to give an overall offer rate. This is then multiplied by the number of applications made by the group for which the average offer rate is being calculated (for example POLAR3 quintile 1), to give an average number of offers for that group. These average number of offers are then added together across all combinations of predicted grade and subject and divided by the number of main scheme applications from the group to give the average offer rate.

The average offer rate does not attempt to control for any other factors that may play a part in the decision to make an offer, such as the subject of the qualifications studied, their relevance to a course, or the grade in each subject; higher numbers of A levels being studied; the exact profile of grades predicted; personal statements; teacher references; interviews; or any other criteria (such as work experience or portfolios) that may be part of the admissions decision.

This statistic is only reported for 18 year olds.

Contribution of group to the average offer rate

The way in which the average offer rate is defined means that the pattern of application and offers of a group (for example POLAR3 quintile 1) will always contribute, in part, to the average offer rate for that group. When this contribution is large, the average offer rate will mainly reflect the patterns for the group, meaning that the value of the average offer rate will be similar to the offer rate, the percentage point difference statistic will be small, and any real difference between the offer rate and what might be expected given the predicted grades and subject choices of the applicants will be difficult to detect.

Values of the contribution of group to the average offer rate range between 0 and 1. The closer the value is to 1 the greater the contribution a group makes to its own average offer rate.

This statistic is only reported for 18 year olds.

Placed June deadline applicants

An applicant who has been placed for entry into higher education at the provider through a June deadline application.

Placed June deadline applicants per 10,000 population

The number of UK domiciled 18 year old placed June deadline applicants at the provider divided by the number of UK 18 year olds in the population, multiplied by 10,000. This gives the number of 18 year olds, for every 10,000 in the population, that were placed at the provider through one of their June deadline applications. It is an alternative way of expressing the entry rate to a provider, but for placed June deadline applicants only. By referencing the underlying population this statistic shows how the number of placed June deadline applicants is changing in relation to the available pool of potential 18 year old applicants and so gives the chance that somebody from the group will be placed at a provider through a June deadline application.

This statistic is only reported for 18 year olds.

June deadline applications

An application (or choice) to a course in higher education to the provider that is made by the June 30 deadline. Each applicant can make up to five choices this way. The number of June deadline applications does not include choices made through the following routes: Clearing, Extra, Adjustment and RPAs. Applications made to October deadline courses received after the October deadline are not included in these statistics.

June deadline applicants

The number of applicants that made at least one application to the provider by the June 30 deadline.

June deadline applicants per 10,000 population

The number of UK domiciled 18 year old June deadline applicants to the provider divided by the number of UK 18 year olds in the population, multiplied by 10,000. This gives the number of 18 year olds, for every 10,000 in the population, who applied by the June 30 deadline. It is equivalent to the application rate. By referencing the underlying population this statistic shows how the number of June deadline applicants is changing in relation to the available pool of potential 18 year old applicants and so gives the chance that somebody from the group will apply to a provider by the June 30 deadline.

This statistic is only reported for 18 year olds.

Offers

An offer is defined as a provider's decision in response to an application to offer a place to an applicant, often subject to the applicant satisfying academic and/or other criteria, via a June deadline application (i.e. does not cover choices made through the following routes: Clearing, Extra, Adjustment and RPAs).

Offer rate

The number of offers made divided by the number of June deadline applications. This gives the proportion of all June deadline applications to the provider that received an offer.

Percentage point difference between offer rate and average offer rate

The offer rate minus the average offer rate.

The percentage point difference can be compared to the expected range of statistical variation resulting from the calculation of the average offer rate using the Average Offer Rate Lookup Table. Where the value of the percentage point difference lies outside of this range, the percentage point difference may be considered to represent a real difference between the offer rate and the average offer rate.

Other definitions

Age

This analysis uses country-specific age definitions that align with the cut off points for school and college cohorts within the different administrations of the UK. For England and Wales, ages are defined on the 31 August, for Northern Ireland on the 1 July and for Scotland on the 28 February the following year. Defining ages in this way matches the assignment of children to school cohorts. For applicants outside of the UK a cohort cut off of 31 August has been used.

Provider

A higher education provider - a university or college.

UK domiciled

Declared area of permanent residence within England, Northern Ireland, Scotland and Wales. Applicants from the Channel Islands and Isle of Man are not included.