

## Scottish providers

**Cycle years:** 2010 - 2015

**Cycle Reference Point:** End of Cycle

**Applicant coverage:** UK domiciled

**Reporting groups:** Sex, POLAR3, SIMD, ethnic group

**Applicant statistics:** June deadline applicants, placed June deadline applicants, all placed applicants, June deadline applicants per 10,000 population, placed June deadline applicants per 10,000 population, all placed applicants per 10,000 population

**Application statistics:** June deadline applications, offers, offer rate, average offer rate, percentage point difference between offer rate and average offer rate, contribution of group to the average offer rate

**Non-disclosure controls:** To avoid the disclosure of information about any individual the following measures are taken

- Applicants, placed applicants, applications and offers are rounded to the nearest 5.
- Applicants/placed applicants per 10,000 population figures are reported as 0 if the applicant/placed applicant figures are rounded to 0.
- All statistics related to the offer rate are not reported when the number of applications for a group is less than 10. The percentage point difference between the offer rate and the average offer rate is not reported when the number of applications for a group is less than 50.
- Offer rates are reported as 0% if there are fewer than 5 offers, and 100% if the number of offers is within 5 of the number of applications. When the offer rate is reported as 0% or 100%, it is reported in italics.

## Contents:

18 year old applicants:	P.1
18 year old applications:	P.2
18 year old applicants by sex:	P.3
18 year old applications by sex:	P.4
18 year old applicants by POLAR3 quintile:	P.7
18 year old applications by POLAR3 quintile:	P.8
18 year old, Scotland domiciled applicants by SIMD quintile:	P.11
18 year old, Scotland domiciled applications by SIMD quintile:	P.12
18 year old applicants by ethnic group:	P.15
18 year old applications by ethnic group:	P.16
Applicants (all ages):	P.19
Applications (all ages):	P.20
Applicants (all ages) by sex:	P.21
Applications (all ages) by sex:	P.22
Applicants (all ages) by POLAR3 quintile:	P.23
Applications (all ages) by POLAR3 quintile:	P.24
Scotland domiciled applicants (all ages) by SIMD quintile:	P.25
Scotland domiciled applications (all ages) by SIMD quintile:	P.26
Applicants (all ages) by ethnic group:	P.27
Applications (all ages) by ethnic group:	P.28

## P.1 18 year old applicants

Statistic	2010	2011	2012	2013	2014	2015
June deadline applicants	45,240	40,475	40,030	42,390	42,665	43,180
Placed June deadline applicants	15,985	15,195	15,820	15,930	16,350	16,265
All placed applicants	17,625	16,295	17,355	17,430	17,550	17,900
June deadline applicants per 10,000 population	573.0	525.6	517.5	557.1	566.5	563.6
Placed June deadline applicants per 10,000	202.5	197.3	204.5	209.4	217.1	212.3
All placed applicants per 10,000 population	223.2	211.6	224.4	229.0	233.0	233.7

## P.2 18 year old applications

Statistic	2010	2011	2012	2013	2014	2015
June deadline applications	116,565	110,490	110,470	113,645	115,575	116,655
Offers	69,220	60,515	67,110	68,720	72,965	73,025
Offer rate	59.4%	54.8%	60.8%	60.5%	63.1%	62.6%

### P.3 18 year old applicants by sex

Statistic	Sex	2010	2011	2012	2013	2014	2015
June deadline applicants	Men	19,925	17,820	17,180	18,265	18,080	18,385
	Women	25,315	22,655	22,850	24,125	24,585	24,795
Placed June deadline applicants	Men	6,830	6,505	6,565	6,710	6,735	6,740
	Women	9,160	8,695	9,255	9,220	9,610	9,525
All placed applicants	Men	7,605	7,010	7,330	7,395	7,305	7,520
	Women	10,015	9,285	10,020	10,030	10,245	10,380
June deadline applicants per 10,000 population	Men	496.1	452.8	433.3	467.9	467.1	468.5
	Women	652.7	601.6	606.2	651.0	671.6	663.5
Placed June deadline applicants per 10,000 population	Men	170.0	165.3	165.5	171.9	174.0	171.7
	Women	236.1	230.9	245.6	248.8	262.6	254.9
All placed applicants per 10,000 population	Men	189.4	178.2	184.9	189.5	188.7	191.7
	Women	258.2	246.5	265.9	270.7	279.8	277.8

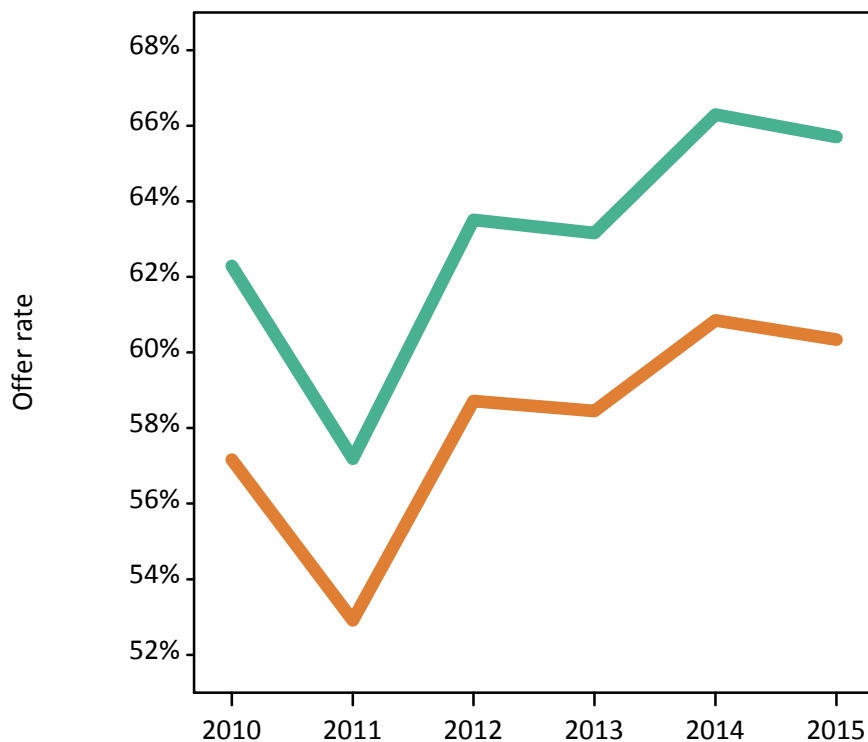
### P.4 18 year old applications by sex

Statistic	Sex	2010	2011	2012	2013	2014	2015
June deadline applications	Men	50,525	48,045	46,870	48,595	48,430	49,035
	Women	66,040	62,445	63,600	65,050	67,145	67,620
Offers	Men	31,470	27,475	29,770	30,695	32,110	32,215
	Women	37,750	33,040	37,340	38,025	40,860	40,805
Offer rate	Men	62.3%	57.2%	63.5%	63.2%	66.3%	65.7%
	Women	57.2%	52.9%	58.7%	58.5%	60.8%	60.3%
Average offer rate	Men	63.0%	58.1%	64.4%	64.2%	67.5%	66.9%
	Women	56.6%	52.2%	58.0%	57.7%	60.0%	59.5%
Percentage point difference between offer rate and average offer rate	Men	-0.7	-1.0	-0.9	-1.1	-1.2	-1.2
	Women	0.5	0.7	0.7	0.8	0.9	0.9
Contribution of group to the average offer rate	Men	0.592	0.597	0.596	0.593	0.589	0.590
	Women	0.688	0.690	0.702	0.696	0.703	0.703

### P.5 18 year old offer rate by sex

Note: The line for a group is not plotted when that group made fewer than 10 applications in any of the years from 2010-2015.

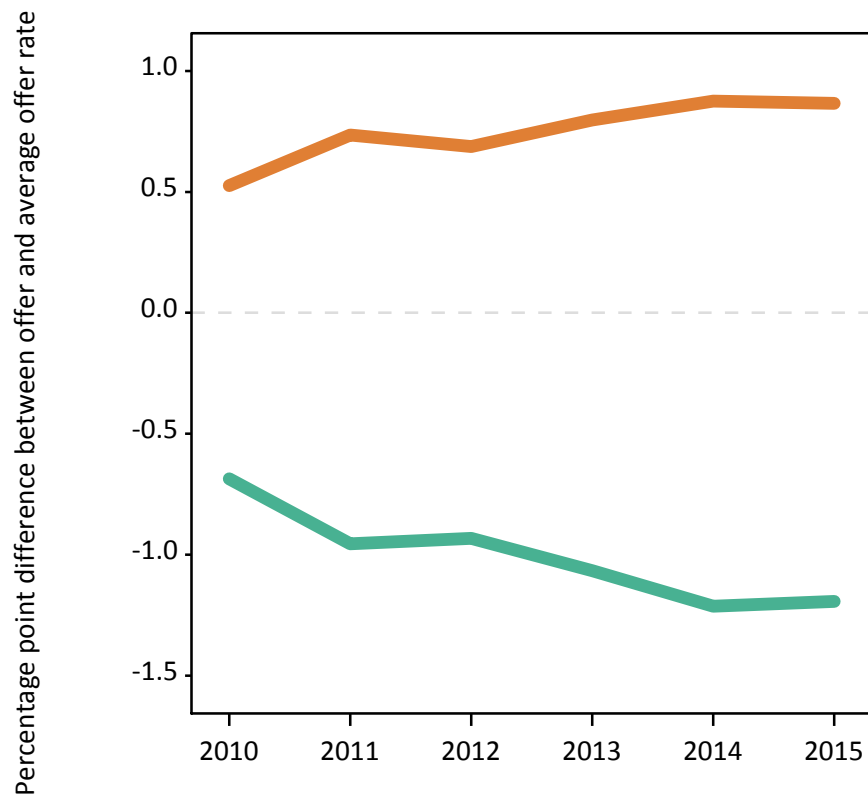
Men  
Women



### P.6 Percentage point difference between 18 year old offer rate and average offer rate by sex

Note: The line for a group is not plotted when that group made fewer than 50 applications in any of the years from 2010-2015.

Men  
Women



## P.7 18 year old applicants by POLAR3 quintile

Statistic	POLAR3 quintile	2010	2011	2012	2013	2014	2015
June deadline applicants	Quintile 1	2,505	2,125	2,100	2,210	2,370	2,500
	Quintile 2	4,555	4,335	4,065	4,355	4,430	4,670
	Quintile 3	6,865	6,220	6,290	6,545	6,580	6,675
	Quintile 4	11,240	10,040	9,855	10,395	10,435	10,480
	Quintile 5	19,940	17,640	17,610	18,770	18,745	18,740
Placed June deadline applicants	Quintile 1	645	550	610	635	725	710
	Quintile 2	1,500	1,510	1,425	1,515	1,570	1,660
	Quintile 3	2,365	2,185	2,405	2,440	2,495	2,450
	Quintile 4	3,935	3,635	3,770	3,755	3,905	3,915
	Quintile 5	7,510	7,275	7,580	7,555	7,625	7,495
All placed applicants	Quintile 1	725	600	695	720	810	800
	Quintile 2	1,680	1,645	1,595	1,695	1,695	1,840
	Quintile 3	2,675	2,385	2,645	2,685	2,670	2,730
	Quintile 4	4,375	3,910	4,185	4,150	4,190	4,375
	Quintile 5	8,130	7,715	8,200	8,150	8,155	8,115
June deadline applicants per 10,000 population	Quintile 1	169.1	147.9	147.3	158.7	170.2	178.6
	Quintile 2	296.2	288.4	271.2	295.7	302.9	314.5
	Quintile 3	431.8	404.2	407.3	429.2	437.3	434.7
	Quintile 4	705.7	641.1	621.2	664.7	677.3	669.5
	Quintile 5	1,176.6	1,065.6	1,048.2	1,135.1	1,149.3	1,119.5
Placed June deadline applicants per 10,000 population	Quintile 1	43.5	38.3	42.7	45.6	52.0	50.7
	Quintile 2	97.6	100.6	95.0	102.9	107.3	111.8
	Quintile 3	148.6	141.9	155.8	159.9	165.7	159.7
	Quintile 4	247.0	232.1	237.6	240.2	253.4	250.0
	Quintile 5	443.2	439.6	451.1	456.8	467.6	447.8
All placed applicants per 10,000 population	Quintile 1	49.0	41.9	48.9	51.6	58.1	57.1
	Quintile 2	109.3	109.4	106.4	114.9	115.9	123.7
	Quintile 3	168.2	155.1	171.3	176.0	177.3	177.9
	Quintile 4	274.7	249.6	263.6	265.3	271.8	279.5
	Quintile 5	479.8	466.0	488.0	492.8	500.0	484.8

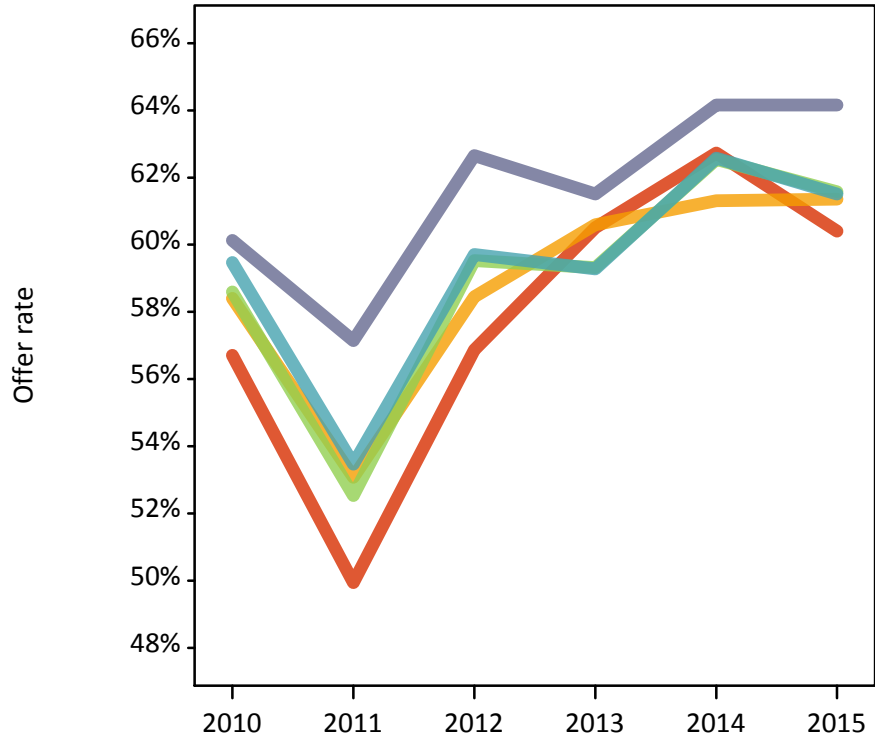
## P.8 18 year old applications by POLAR3 quintile

Statistic	POLAR3 quintile	2010	2011	2012	2013	2014	2015
June deadline applications	Quintile 1	5,565	4,980	5,045	5,240	5,940	6,130
	Quintile 2	11,865	11,750	11,205	11,770	12,285	12,930
	Quintile 3	18,015	17,015	17,585	17,860	18,130	18,325
	Quintile 4	28,860	27,025	26,760	27,510	28,110	28,450
	Quintile 5	51,970	49,455	49,630	51,000	50,870	50,570
Offers	Quintile 1	3,155	2,485	2,870	3,170	3,725	3,705
	Quintile 2	6,930	6,235	6,550	7,135	7,530	7,935
	Quintile 3	10,555	8,940	10,470	10,595	11,340	11,285
	Quintile 4	17,165	14,450	15,980	16,305	17,590	17,500
	Quintile 5	31,250	28,260	31,095	31,370	32,640	32,445
Offer rate	Quintile 1	56.7%	49.9%	56.9%	60.5%	62.7%	60.4%
	Quintile 2	58.4%	53.1%	58.4%	60.6%	61.3%	61.4%
	Quintile 3	58.6%	52.5%	59.5%	59.3%	62.5%	61.6%
	Quintile 4	59.5%	53.5%	59.7%	59.3%	62.6%	61.5%
	Quintile 5	60.1%	57.1%	62.7%	61.5%	64.2%	64.2%
Average offer rate	Quintile 1	57.7%	51.1%	58.4%	59.5%	60.6%	60.5%
	Quintile 2	59.2%	53.6%	60.1%	59.8%	60.6%	60.4%
	Quintile 3	59.5%	54.0%	60.2%	59.9%	62.2%	61.5%
	Quintile 4	59.7%	54.3%	60.2%	60.3%	63.2%	62.6%
	Quintile 5	59.4%	56.0%	61.6%	61.0%	64.3%	63.8%
Percentage point difference between offer rate and average offer rate	Quintile 1	-1.0	-1.2	-1.6	1.0	2.2	-0.1
	Quintile 2	-0.8	-0.6	-1.7	0.8	0.7	0.9
	Quintile 3	-0.9	-1.4	-0.7	-0.6	0.3	0.1
	Quintile 4	-0.2	-0.8	-0.5	-1.0	-0.6	-1.0
	Quintile 5	0.7	1.2	1.0	0.5	-0.2	0.3
Contribution of group to the average offer rate	Quintile 1	0.158	0.157	0.152	0.149	0.150	0.150
	Quintile 2	0.186	0.185	0.182	0.178	0.179	0.184
	Quintile 3	0.218	0.222	0.224	0.218	0.217	0.219
	Quintile 4	0.304	0.304	0.298	0.296	0.297	0.295
	Quintile 5	0.503	0.505	0.504	0.504	0.494	0.488

### P.9 18 year old offer rate by POLAR3 quintile

Note: The line for a group is not plotted when that group made fewer than 10 applications in any of the years from 2010-2015.

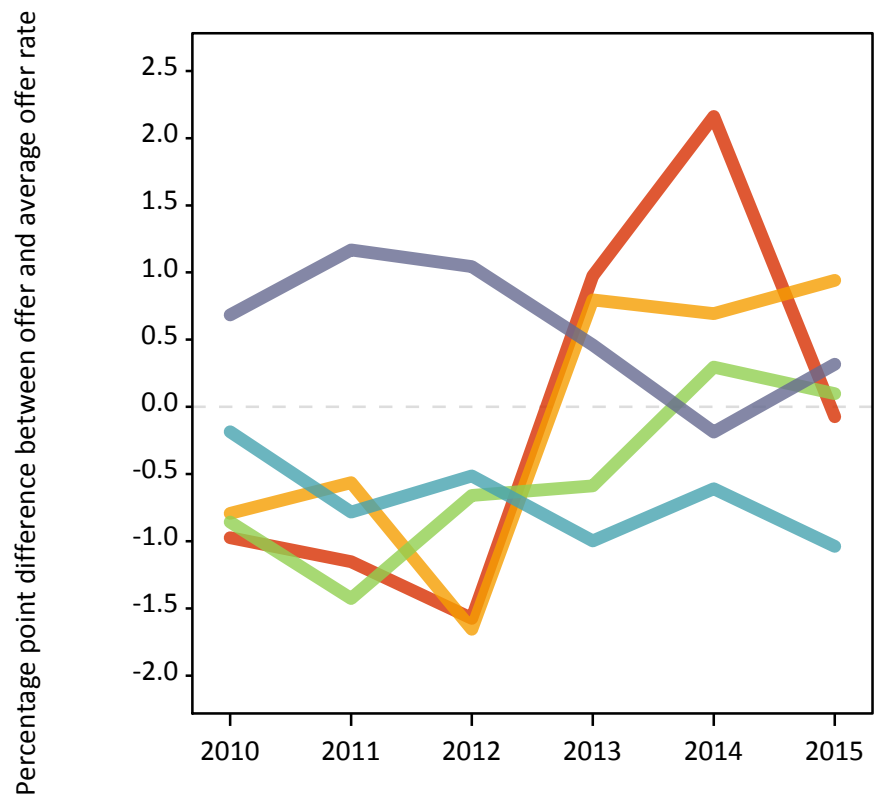
- Quintile 1
- Quintile 2
- Quintile 3
- Quintile 4
- Quintile 5



### P.10 Percentage point difference between 18 year old offer rate and average offer rate by POLAR3 quintile

Note: The line for a group is not plotted when that group made fewer than 50 applications in any of the years from 2010-2015.

- Quintile 1
- Quintile 2
- Quintile 3
- Quintile 4
- Quintile 5



**P.11 18 year old, Scotland domiciled applicants by SIMD quintile**

Statistic	SIMD quintile	2010	2011	2012	2013	2014	2015
June deadline applicants	Quintile 1	1,685	1,695	1,700	1,740	1,995	1,935
	Quintile 2	2,670	2,510	2,440	2,515	2,605	2,670
	Quintile 3	3,695	3,555	3,575	3,585	3,650	3,735
	Quintile 4	4,845	4,780	4,730	4,680	4,720	4,750
	Quintile 5	6,585	6,585	6,465	6,335	6,230	6,280
Placed June deadline applicants	Quintile 1	965	975	1,020	1,115	1,215	1,115
	Quintile 2	1,645	1,535	1,505	1,660	1,735	1,765
	Quintile 3	2,460	2,280	2,320	2,310	2,405	2,395
	Quintile 4	3,380	3,190	3,225	3,170	3,210	3,240
	Quintile 5	4,690	4,590	4,625	4,470	4,380	4,390
All placed applicants	Quintile 1	1,130	1,065	1,145	1,235	1,305	1,215
	Quintile 2	1,905	1,700	1,700	1,835	1,845	1,935
	Quintile 3	2,815	2,495	2,565	2,585	2,530	2,685
	Quintile 4	3,760	3,440	3,535	3,470	3,380	3,560
	Quintile 5	5,045	4,865	4,915	4,760	4,605	4,685
June deadline applicants per 10,000 population	Quintile 1	1,240.5	1,269.1	1,300.4	1,328.6	1,523.4	1,517.0
	Quintile 2	2,148.5	2,091.3	2,075.1	2,148.8	2,244.6	2,353.9
	Quintile 3	2,974.4	2,894.3	2,958.6	3,008.2	3,089.6	3,222.5
	Quintile 4	3,874.0	3,829.7	3,804.9	3,780.4	3,813.4	3,873.0
	Quintile 5	5,089.7	5,169.8	5,133.3	5,084.0	5,034.8	5,140.9
Placed June deadline applicants per 10,000 population	Quintile 1	708.5	729.7	780.7	850.4	926.9	874.9
	Quintile 2	1,322.1	1,278.8	1,280.6	1,418.9	1,494.1	1,554.9
	Quintile 3	1,981.6	1,857.3	1,919.1	1,939.4	2,036.3	2,065.3
	Quintile 4	2,703.4	2,554.2	2,595.6	2,559.8	2,593.2	2,642.1
	Quintile 5	3,625.6	3,600.9	3,673.4	3,585.9	3,540.5	3,593.3
All placed applicants per 10,000 population	Quintile 1	832.9	797.1	876.4	943.4	994.8	951.0
	Quintile 2	1,531.3	1,414.5	1,443.7	1,567.4	1,590.6	1,702.9
	Quintile 3	2,265.0	2,031.7	2,121.9	2,172.0	2,143.9	2,314.5
	Quintile 4	3,008.1	2,756.9	2,845.8	2,801.4	2,730.5	2,905.6
	Quintile 5	3,900.0	3,819.0	3,902.0	3,819.4	3,720.7	3,835.6



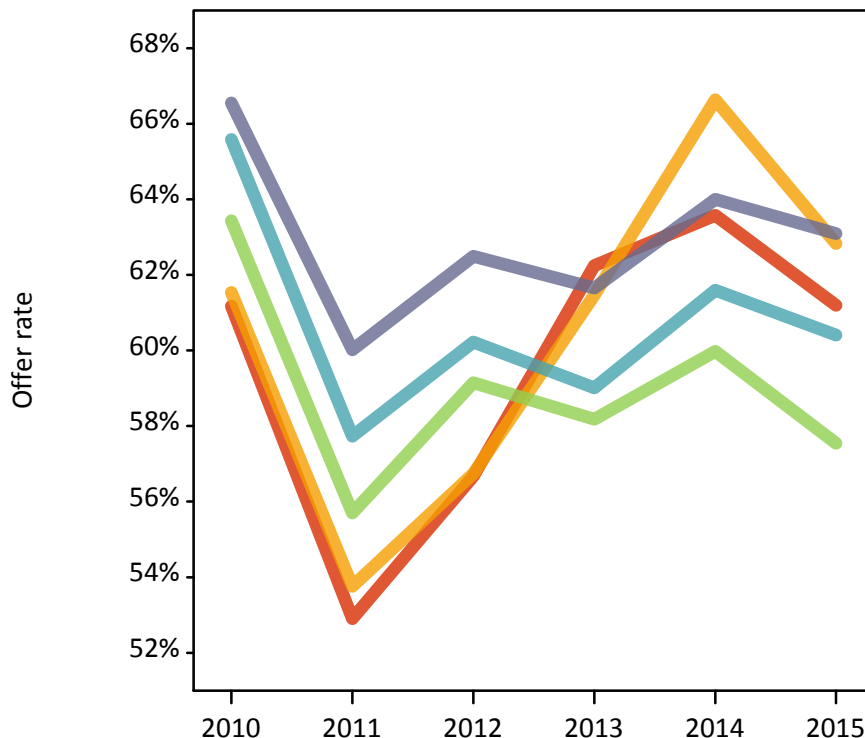
**P.12 18 year old, Scotland domiciled applications by SIMD quintile**

Statistic	SIMD quintile	2010	2011	2012	2013	2014	2015
June deadline applications	Quintile 1	6,920	7,215	7,415	7,665	8,960	8,630
	Quintile 2	11,240	10,935	10,775	11,080	11,660	11,965
	Quintile 3	15,635	15,355	15,525	15,640	16,140	16,660
	Quintile 4	20,290	20,355	20,565	20,565	20,790	21,025
	Quintile 5	27,605	28,255	28,430	27,520	27,490	27,685
Offers	Quintile 1	4,230	3,815	4,205	4,770	5,700	5,280
	Quintile 2	6,920	5,880	6,115	6,810	7,770	7,515
	Quintile 3	9,915	8,555	9,185	9,100	9,680	9,590
	Quintile 4	13,310	11,750	12,385	12,135	12,805	12,700
	Quintile 5	18,370	16,960	17,765	16,965	17,595	17,470
Offer rate	Quintile 1	61.2%	52.9%	56.7%	62.2%	63.6%	61.2%
	Quintile 2	61.5%	53.8%	56.7%	61.5%	66.6%	62.8%
	Quintile 3	63.4%	55.7%	59.1%	58.2%	60.0%	57.5%
	Quintile 4	65.6%	57.7%	60.2%	59.0%	61.6%	60.4%
	Quintile 5	66.5%	60.0%	62.5%	61.7%	64.0%	63.1%
Average offer rate	Quintile 1	62.9%	55.5%	58.8%	59.3%	60.4%	58.9%
	Quintile 2	63.7%	55.8%	58.0%	59.7%	61.7%	59.7%
	Quintile 3	64.2%	56.9%	59.9%	60.1%	62.1%	60.1%
	Quintile 4	64.9%	57.5%	60.2%	60.5%	63.4%	61.7%
	Quintile 5	65.3%	58.1%	61.1%	60.9%	64.5%	62.6%
Percentage point difference between offer rate and average offer rate	Quintile 1	-1.7	-2.6	-2.2	2.9	3.2	2.3
	Quintile 2	-2.2	-2.1	-1.3	1.8	5.0	3.2
	Quintile 3	-0.8	-1.2	-0.7	-2.0	-2.1	-2.6
	Quintile 4	0.7	0.2	0.0	-1.5	-1.9	-1.3
	Quintile 5	1.3	1.9	1.4	0.7	-0.5	0.5
Contribution of group to the average offer rate	Quintile 1	0.133	0.133	0.138	0.136	0.153	0.142
	Quintile 2	0.173	0.170	0.165	0.171	0.170	0.172
	Quintile 3	0.222	0.216	0.218	0.220	0.219	0.223
	Quintile 4	0.275	0.278	0.275	0.277	0.273	0.269
	Quintile 5	0.379	0.382	0.383	0.376	0.362	0.363

**P.13 18 year old, Scotland domiciled offer rate by SIMD quintile**

Note: The line for a group is not plotted when that group made fewer than 10 applications in any of the years from 2010-2015.

- Quintile 1
- Quintile 2
- Quintile 3
- Quintile 4
- Quintile 5



**P.14 Percentage point difference between 18 year old, Scotland domiciled offer rate and average offer rate by SIMD quintile**

Note: The line for a group is not plotted when that group made fewer than 50 applications in any of the years from 2010-2015.

- Quintile 1
- Quintile 2
- Quintile 3
- Quintile 4
- Quintile 5



## P.15 18 year old applicants by ethnic group

Statistic	Ethnic group	2010	2011	2012	2013	2014	2015
June deadline applicants	Asian	1,615	1,520	1,760	1,815	2,100	2,195
	Black	375	435	440	595	620	680
	Mixed	990	945	975	1,180	1,230	1,315
	White	41,825	37,185	36,450	38,380	38,280	38,430
	Other	140	145	190	215	240	285
Placed June deadline applicants	Asian	420	430	520	540	595	630
	Black	60	55	75	105	110	100
	Mixed	225	270	265	305	300	335
	White	15,200	14,360	14,865	14,890	15,250	15,045
	Other	25	30	50	45	45	70
All placed applicants	Asian	500	490	615	620	685	725
	Black	75	65	105	130	145	130
	Mixed	240	285	295	330	335	370
	White	16,655	15,360	16,225	16,235	16,260	16,500
	Other	25	30	50	55	60	85
June deadline applicants per 10,000 population	Asian	261.2	241.2	271.6	275.0	310.0	309.9
	Black	142.9	158.7	155.9	200.8	205.2	213.1
	Mixed	428.2	390.2	373.6	436.4	426.8	425.9
	White	623.6	574.4	564.5	609.9	620.5	616.8
	Other	184.4	176.5	214.7	234.9	260.0	298.0
Placed June deadline applicants per 10,000 population	Asian	67.8	68.4	80.6	81.7	87.7	89.2
	Black	22.5	19.8	25.9	35.4	36.6	31.7
	Mixed	96.3	111.9	101.0	112.4	104.6	108.0
	White	226.7	221.8	230.2	236.6	247.2	241.5
	Other	29.9	35.8	54.2	49.6	46.2	72.7
All placed applicants per 10,000 population	Asian	80.7	77.8	95.0	93.9	101.2	102.5
	Black	29.0	23.8	36.6	43.8	48.5	41.2
	Mixed	102.7	117.3	113.3	122.1	116.4	120.0
	White	248.4	237.3	251.3	258.0	263.5	264.8
	Other	35.1	39.5	58.8	61.8	62.3	89.3

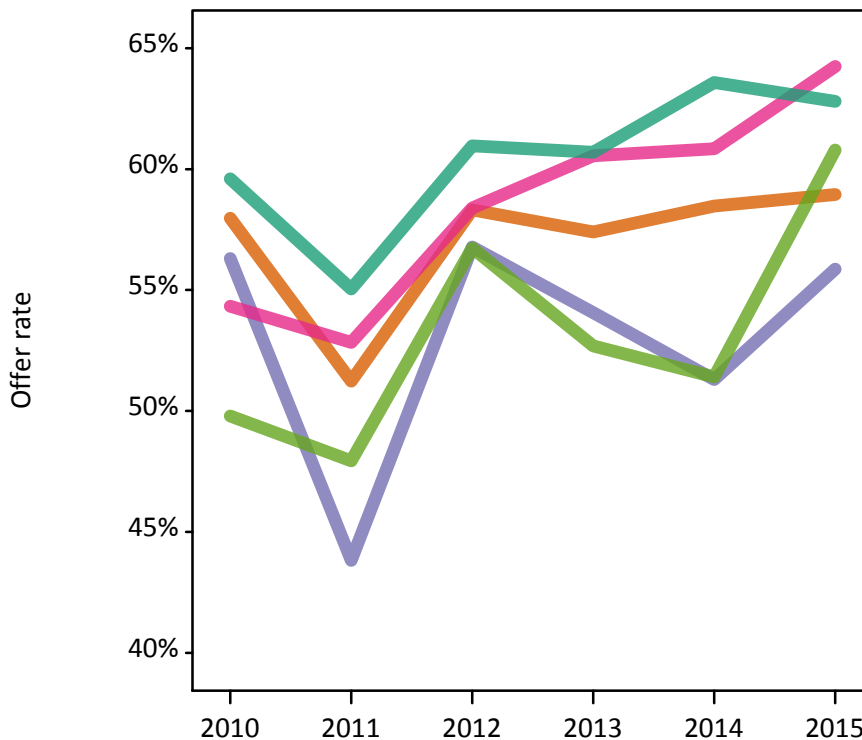
## P.16 18 year old applications by ethnic group

Statistic	Ethnic group	2010	2011	2012	2013	2014	2015
June deadline applications	Asian	3,855	3,830	4,450	4,450	4,930	5,235
	Black	660	760	790	1,060	1,110	1,230
	Mixed	1,905	2,010	1,990	2,305	2,365	2,585
	White	109,385	103,140	102,450	104,910	106,310	106,450
	Other	240	290	395	465	500	610
Offers	Asian	2,235	1,960	2,595	2,555	2,885	3,085
	Black	370	335	450	570	570	685
	Mixed	1,035	1,060	1,160	1,395	1,440	1,660
	White	65,195	56,775	62,450	63,685	67,595	66,850
	Other	120	140	225	245	255	370
Offer rate	Asian	58.0%	51.2%	58.3%	57.4%	58.5%	58.9%
	Black	56.3%	43.8%	56.8%	54.1%	51.3%	55.9%
	Mixed	54.3%	52.8%	58.4%	60.6%	60.8%	64.2%
	White	59.6%	55.0%	61.0%	60.7%	63.6%	62.8%
	Other	49.8%	47.9%	56.7%	52.7%	51.4%	60.8%
Average offer rate	Asian	59.7%	54.9%	60.8%	60.5%	60.4%	61.8%
	Black	56.6%	48.7%	60.6%	58.7%	56.3%	60.0%
	Mixed	54.0%	51.8%	58.8%	60.3%	62.1%	63.9%
	White	59.5%	54.9%	60.8%	60.5%	63.4%	62.6%
	Other	48.1%	48.4%	59.2%	56.6%	56.2%	61.8%
Percentage point difference between offer rate and average offer rate	Asian	-1.8	-3.7	-2.4	-3.0	-2.0	-2.9
	Black	-0.3	-4.9	-3.8	-4.6	-5.0	-4.1
	Mixed	0.3	1.0	-0.4	0.3	-1.3	0.3
	White	0.1	0.2	0.2	0.2	0.2	0.2
	Other	1.7	-0.4	-2.5	-3.9	-4.7	-1.1
Contribution of group to the average offer rate	Asian	0.144	0.148	0.147	0.145	0.155	0.157
	Black	0.154	0.201	0.165	0.175	0.194	0.170
	Mixed	0.118	0.120	0.123	0.130	0.120	0.121
	White	0.946	0.942	0.937	0.934	0.932	0.925
	Other	0.114	0.082	0.109	0.130	0.125	0.109

**P.17 18 year old offer rate by ethnic group**

Note: The line for a group is not plotted when that group made fewer than 10 applications in any of the years from 2010-2015.

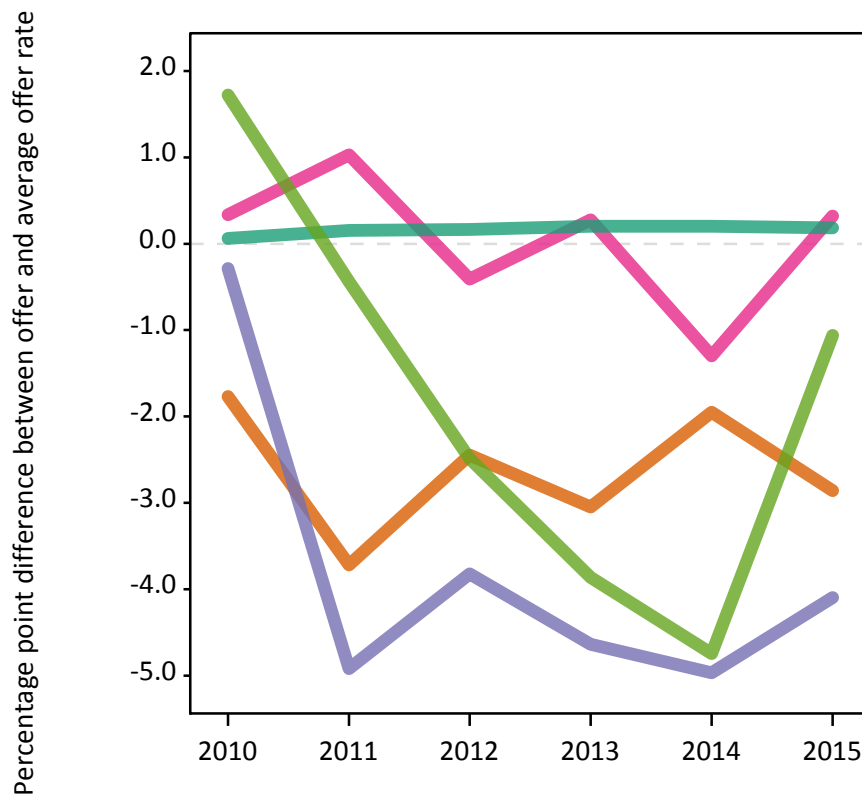
- Asian
- Black
- Mixed
- White
- Other



**P.18 Percentage point difference between 18 year old offer rate and average offer rate by ethnic group**

Note: The line for a group is not plotted when that group made fewer than 50 applications in any of the years from 2010-2015.

- Asian
- Black
- Mixed
- White
- Other



### P.19 Applicants (all ages)

Statistic	2010	2011	2012	2013	2014	2015
June deadline applicants	79,970	75,990	72,855	77,745	78,450	83,600
Placed June deadline applicants	30,020	29,520	30,020	30,655	31,940	34,055
All placed applicants	35,015	33,415	34,315	35,010	34,410	38,720

### P.20 Applications (all ages)

Statistic	2010	2011	2012	2013	2014	2015
June deadline applications	201,505	203,980	202,550	210,590	216,515	232,555
Offers	108,110	98,625	107,025	111,140	117,800	121,000
Offer rate	53.7%	48.4%	52.8%	52.8%	54.4%	52.0%

### P.21 Applicants (all ages) by sex

Statistic	Sex	2010	2011	2012	2013	2014	2015
June deadline applicants	Men	34,650	32,775	31,155	33,435	33,035	34,710
	Women	45,315	43,215	41,700	44,310	45,415	48,895
Placed June deadline applicants	Men	12,730	12,450	12,630	13,055	13,210	13,720
	Women	17,290	17,070	17,390	17,600	18,730	20,335
All placed applicants	Men	15,035	14,235	14,635	14,995	14,360	15,810
	Women	19,980	19,180	19,685	20,020	20,050	22,910

### P.22 Applications (all ages) by sex

Statistic	Sex	2010	2011	2012	2013	2014	2015
June deadline applications	Men	86,715	87,450	86,585	91,145	91,235	95,985
	Women	114,790	116,530	115,965	119,445	125,280	136,570
Offers	Men	49,535	44,890	48,605	50,760	52,600	53,585
	Women	58,575	53,735	58,420	60,375	65,205	67,415
Offer rate	Men	57.1%	51.3%	56.1%	55.7%	57.7%	55.8%
	Women	51.0%	46.1%	50.4%	50.5%	52.0%	49.4%

### P.23 Applicants (all ages) by POLAR3 quintile

Statistic	POLAR3 quintile	2010	2011	2012	2013	2014	2015
June deadline applicants	Quintile 1	5,200	5,125	4,745	5,180	5,380	5,845
	Quintile 2	9,190	9,110	8,530	9,125	9,435	10,190
	Quintile 3	12,890	12,580	12,175	12,755	12,960	13,830
	Quintile 4	19,450	18,330	17,570	18,720	18,855	19,910
	Quintile 5	32,895	30,570	29,555	31,690	31,630	33,585
Placed June deadline applicants	Quintile 1	1,625	1,620	1,655	1,740	1,895	2,040
	Quintile 2	3,380	3,435	3,315	3,570	3,750	4,035
	Quintile 3	4,780	4,680	4,840	4,955	5,235	5,545
	Quintile 4	7,285	7,040	7,095	7,170	7,620	8,020
	Quintile 5	12,855	12,670	13,035	13,140	13,380	14,345
All placed applicants	Quintile 1	1,945	1,860	1,945	2,025	2,090	2,360
	Quintile 2	3,995	3,915	3,850	4,125	4,055	4,635
	Quintile 3	5,650	5,425	5,580	5,740	5,635	6,390
	Quintile 4	8,610	8,095	8,260	8,305	8,195	9,310
	Quintile 5	14,695	14,035	14,585	14,710	14,365	15,925

### P.24 Applications (all ages) by POLAR3 quintile

Statistic	POLAR3 quintile	2010	2011	2012	2013	2014	2015
June deadline applications	Quintile 1	11,885	12,485	12,005	12,945	14,025	15,405
	Quintile 2	23,300	24,385	23,905	24,910	26,585	28,860
	Quintile 3	32,780	33,485	33,725	34,610	36,195	38,675
	Quintile 4	48,980	48,925	48,525	50,505	51,360	55,300
	Quintile 5	83,850	84,055	83,690	86,925	87,875	93,685
Offers	Quintile 1	5,945	5,305	5,715	6,470	6,990	7,320
	Quintile 2	12,005	11,035	11,820	12,930	13,640	14,235
	Quintile 3	17,295	15,500	17,355	17,640	19,155	19,505
	Quintile 4	26,285	23,360	25,185	26,120	27,915	28,605
	Quintile 5	46,210	43,140	46,640	47,675	49,870	51,040
Offer rate	Quintile 1	50.0%	42.5%	47.6%	50.0%	49.8%	47.5%
	Quintile 2	51.5%	45.2%	49.5%	51.9%	51.3%	49.3%
	Quintile 3	52.8%	46.3%	51.5%	51.0%	52.9%	50.4%
	Quintile 4	53.7%	47.7%	51.9%	51.7%	54.4%	51.7%
	Quintile 5	55.1%	51.3%	55.7%	54.8%	56.7%	54.5%



## P.25 Scotland domiciled applicants (all ages) by SIMD quintile

Statistic	SIMD quintile	2010	2011	2012	2013	2014	2015
June deadline applicants	Quintile 1	5,870	5,990	5,980	6,190	6,600	7,240
	Quintile 2	6,835	6,795	6,570	6,740	7,050	7,930
	Quintile 3	8,095	8,025	8,005	8,185	8,410	9,265
	Quintile 4	9,365	9,490	9,265	9,375	9,515	10,545
	Quintile 5	11,645	11,965	11,685	11,530	11,470	12,575
Placed June deadline applicants	Quintile 1	3,195	3,280	3,390	3,610	3,850	4,065
	Quintile 2	3,855	3,840	3,780	4,015	4,305	4,750
	Quintile 3	4,945	4,760	4,795	4,880	5,160	5,510
	Quintile 4	5,910	5,775	5,845	5,920	6,030	6,580
	Quintile 5	7,640	7,655	7,665	7,475	7,520	8,075
All placed applicants	Quintile 1	3,880	3,725	3,880	4,130	4,155	4,570
	Quintile 2	4,750	4,505	4,485	4,695	4,615	5,495
	Quintile 3	6,065	5,640	5,685	5,795	5,475	6,490
	Quintile 4	7,015	6,685	6,800	6,890	6,405	7,565
	Quintile 5	8,540	8,400	8,360	8,220	7,985	8,785

## P.26 Scotland domiciled applications (all ages) by SIMD quintile

Statistic	SIMD quintile	2010	2011	2012	2013	2014	2015
June deadline applications	Quintile 1	19,275	21,075	21,905	22,570	25,005	27,210
	Quintile 2	23,640	24,940	24,940	25,500	27,240	30,150
	Quintile 3	28,900	30,030	30,685	31,570	32,940	35,890
	Quintile 4	34,390	35,955	36,360	36,890	37,845	41,395
	Quintile 5	43,580	46,710	46,880	46,325	46,810	50,345
Offers	Quintile 1	9,935	9,360	10,355	11,585	12,590	12,740
	Quintile 2	12,730	11,625	12,100	13,215	14,615	14,965
	Quintile 3	16,325	14,580	15,770	15,940	17,080	17,265
	Quintile 4	20,250	18,575	19,550	19,420	20,730	21,290
	Quintile 5	26,515	25,510	26,295	25,585	26,655	27,245
Offer rate	Quintile 1	51.5%	44.4%	47.3%	51.3%	50.4%	46.8%
	Quintile 2	53.8%	46.6%	48.5%	51.8%	53.7%	49.6%
	Quintile 3	56.5%	48.6%	51.4%	50.5%	51.9%	48.1%
	Quintile 4	58.9%	51.7%	53.8%	52.6%	54.8%	51.4%
	Quintile 5	60.8%	54.6%	56.1%	55.2%	56.9%	54.1%

## P.27 Applicants (all ages) by ethnic group

Statistic	Ethnic group	2010	2011	2012	2013	2014	2015
June deadline applicants	Asian	3,425	3,520	3,655	3,890	4,235	4,605
	Black	1,480	1,680	1,625	1,760	1,880	2,045
	Mixed	1,800	1,740	1,755	2,000	2,115	2,325
	White	72,310	68,105	64,870	69,030	69,190	73,250
	Other	340	360	450	520	555	685
Placed June deadline applicants	Asian	920	1,035	1,090	1,215	1,245	1,370
	Black	310	320	370	385	385	430
	Mixed	450	495	535	560	575	635
	White	28,125	27,460	27,770	28,235	29,495	31,215
	Other	65	70	125	115	115	195
All placed applicants	Asian	1,120	1,180	1,295	1,410	1,420	1,605
	Black	390	390	455	455	460	540
	Mixed	495	540	610	625	635	725
	White	32,090	30,960	31,570	32,125	31,500	35,345
	Other	85	85	145	145	160	240

## P.28 Applications (all ages) by ethnic group

Statistic	Ethnic group	2010	2011	2012	2013	2014	2015
June deadline applications	Asian	8,360	8,850	9,460	9,925	10,515	11,625
	Black	3,180	3,620	3,650	3,745	4,140	4,615
	Mixed	3,555	3,850	3,845	4,205	4,370	4,980
	White	184,620	185,810	183,570	190,330	195,245	208,205
	Other	635	710	1,025	1,145	1,240	1,560
Offers	Asian	4,145	3,920	4,675	4,985	5,170	5,585
	Black	1,220	1,100	1,350	1,430	1,460	1,690
	Mixed	1,735	1,780	1,995	2,210	2,310	2,645
	White	100,235	91,025	98,065	101,465	107,840	109,585
	Other	270	290	460	485	535	730
Offer rate	Asian	49.6%	44.3%	49.4%	50.2%	49.2%	48.0%
	Black	38.3%	30.3%	36.9%	38.2%	35.3%	36.6%
	Mixed	48.8%	46.3%	51.8%	52.6%	52.9%	53.1%
	White	54.3%	49.0%	53.4%	53.3%	55.2%	52.6%
	Other	42.3%	41.0%	44.8%	42.5%	43.2%	46.7%

## Technical Notes and Definitions

### UCAS undergraduate scheme

#### Adjustment

Adjustment allows applicants who have met and exceeded the terms of their conditional firm offer to seek and find a place at another provider whilst keeping their place at their original firm choice provider.

#### Clearing

Clearing is a route for applicants that are not placed and holding no offers to find a place on courses with vacancies.

#### Cycle year

The UCAS application cycle which runs from September to October the following year. For example the 2015 cycle runs from September 2014 through to October 2015.

#### End of cycle

The point in the cycle to which the numbers in this report refer, and the point at which the cycle is closed such that no more applications or offers can be made, and no more applicants can be placed. Numbers reported at the end of cycle exclude information on a small number of applicants who cancelled during the cycle.

#### Extra

Applicants who are unsuccessful in obtaining an offer or decline all offers may be eligible to apply through Extra, where they can apply to one further course at a time. Extra operates from 25 February until early July. It provides applicants who are eligible the possibility of obtaining an offer before exam results are published and Clearing starts.

#### June 30 deadline

The deadline for main scheme applications. Applicants who apply after this date will go directly into Clearing.

#### Record of Prior Acceptance (RPA)

RPA is an acceptance route used when a provider informs UCAS of applicants it has accepted outside of the normal application process (e.g. individuals who have applied directly to the provider).

### Reporting groups

#### Ethnic group

High level grouping of ethnic origin as declared by the applicant: 'White', 'Black', 'Asian', 'Mixed', 'Other', 'Unknown'. Applicants who declare themselves as 'Unknown' ethnic origin are not reported in these tables, but are included in the associated csv data file.

#### POLAR3 quintile

Developed by HEFCE, POLAR3 classifies small areas across the UK into five groups according to their level of young participation in Higher Education. Each of these groups represents around 20 per cent of young people and is ranked from Quintile 1 (areas with the lowest young participation rates, considered as the most disadvantaged) to Quintile 5 (highest young participation rates, considered most advantaged). POLAR3 is based on the participation rates of young people between 2005 and 2009 who entered Higher Education between 2005-06 and 2010-11, therefore is most suitable for applicants aged 19 and under. These groups are assigned using the postcode declared by the applicant at the time of their application. If a UK postcode is invalid, considered unsafe for measurement or there is no link to Census geography possible then the applicant is not assigned to a quintile. Applicants with no POLAR3 quintile are not reported.

#### Sex

Sex as declared by the applicant.

### **SIMD quintile**

Scottish index of multiple deprivation (SIMD) for 2012 identifies small area concentrations of multiple deprivation across all of Scotland, providing a relative measure of deprivation amongst 6505 small areas (data zones) based on 7 socio-economic domains. These small areas are classified into five groups ranked from Quintile 1 (considered the most deprived) to Quintile 5 (considered least deprived), with equal populations in each quintile. Quintiles are assigned using the postcode declared by the applicant, applicants declaring invalid postcodes are classified as 'Not assigned' and are not reported.

SIMD is only defined for applicants domiciled in Scotland, therefore any applicants domiciled outside of Scotland cannot be assigned to an SIMD quintile and so are not reported for this measure.

SIMD is only reported for providers in Scotland. Application and entry rates by SIMD are reported in the 2015 End of Cycle Report and the 2016 cycle January deadline application rate report.

### **Statistics reported in the tables**

#### **All placed applicants**

The number of applicants placed for entry into higher education at the provider through one of their choices, including any choices made through Extra, or via Adjustment, Clearing or RPA.

#### **All placed applicants per 10,000 population**

The number of total UK domiciled 18 year old placed applicants for entry into higher education at the provider divided by the number of UK 18 year olds in the population, multiplied by 10,000. This gives the number of 18 year olds, for every 10,000 in the population, that were placed at the provider through one of their choices, including any choices made through Extra, or via Adjustment, Clearing or RPA. It is an alternative way of expressing the entry rate to a provider. By referencing the underlying population this statistic shows how the number of placed applicants is changing in relation to the available pool of potential applicants and so gives the chance that somebody from the group will be placed at a provider.

This statistic is only reported for 18 year olds.

#### **Average offer rate**

The offer rate that you might expect if the predicted grades and subject choice of applicants were the only factors that influenced whether an applicant was made an offer by the provider. The average offer rate is calculated by dividing applicants according to their specific combination of grades (for A levels the best three predicted grades are used, for BTECs, International Baccalaureate and Scottish Highers and Advanced Highers, predicted grades along with any grades already achieved upon applying are used) and subject choice. For each combination the number of main scheme offers is divided by the number of main scheme applications, to give an overall offer rate. This is then multiplied by the number of applications made by the group for which the average offer rate is being calculated (for example POLAR3 quintile 1), to give an average number of offers for that group. These average number of offers are then added together across all combinations of predicted grade and subject and divided by the number of main scheme applications from the group to give the average offer rate.

The average offer rate does not attempt to control for any other factors that may play a part in the decision to make an offer, such as the subject of the qualifications studied, their relevance to a course, or the grade in each subject; higher numbers of A levels being studied; the exact profile of grades predicted; personal statements; teacher references; interviews; or any other criteria (such as work experience or portfolios) that may be part of the admissions decision.

This statistic is only reported for 18 year olds.

### Contribution of group to the average offer rate

The way in which the average offer rate is defined means that the pattern of application and offers of a group (for example POLAR3 quintile 1) will always contribute, in part, to the average offer rate for that group. When this contribution is large, the average offer rate will mainly reflect the patterns for the group, meaning that the value of the average offer rate will be similar to the offer rate, the percentage point difference statistic will be small, and any real difference between the offer rate and what might be expected given the predicted grades and subject choices of the applicants will be difficult to detect.

Values of the contribution of group to the average offer rate range between 0 and 1. The closer the value is to 1 the greater the contribution a group makes to its own average offer rate.

This statistic is only reported for 18 year olds.

### Placed June deadline applicants

An applicant who has been placed for entry into higher education at the provider through a June deadline application.

### Placed June deadline applicants per 10,000 population

The number of UK domiciled 18 year old placed June deadline applicants at the provider divided by the number of UK 18 year olds in the population, multiplied by 10,000. This gives the number of 18 year olds, for every 10,000 in the population, that were placed at the provider through one of their June deadline applications. It is an alternative way of expressing the entry rate to a provider, but for placed June deadline applicants only. By referencing the underlying population this statistic shows how the number of placed June deadline applicants is changing in relation to the available pool of potential 18 year old applicants and so gives the chance that somebody from the group will be placed at a provider through a June deadline application.

This statistic is only reported for 18 year olds.

### June deadline applications

An application (or choice) to a course in higher education to the provider that is made by the June 30 deadline. Each applicant can make up to five choices this way. The number of June deadline applications does not include choices made through the following routes: Clearing, Extra, Adjustment and RPAs. Applications made to October deadline courses received after the October deadline are not included in these statistics.

### June deadline applicants

The number of applicants that made at least one application to the provider by the June 30 deadline.

### June deadline applicants per 10,000 population

The number of UK domiciled 18 year old June deadline applicants to the provider divided by the number of UK 18 year olds in the population, multiplied by 10,000. This gives the number of 18 year olds, for every 10,000 in the population, who applied by the June 30 deadline. It is equivalent to the application rate. By referencing the underlying population this statistic shows how the number of June deadline applicants is changing in relation to the available pool of potential 18 year old applicants and so gives the chance that somebody from the group will apply to a provider by the June 30 deadline.

This statistic is only reported for 18 year olds.

### Offers

An offer is defined as a provider's decision in response to an application to offer a place to an applicant, often subject to the applicant satisfying academic and/or other criteria, via a June deadline application (i.e. does not cover choices made through the following routes: Clearing, Extra, Adjustment and RPAs).

### Offer rate

The number of offers made divided by the number of June deadline applications. This gives the proportion of all June deadline applications to the provider that received an offer.

### Percentage point difference between offer rate and average offer rate

The offer rate minus the average offer rate.

The percentage point difference can be compared to the expected range of statistical variation resulting from the calculation of the average offer rate using the Average Offer Rate Lookup Table. Where the value of the percentage point difference lies outside of this range, the percentage point difference may be considered to represent a real difference between the offer rate and the average offer rate.

### Other definitions

#### Age

This analysis uses country-specific age definitions that align with the cut off points for school and college cohorts within the different administrations of the UK. For England and Wales, ages are defined on the 31 August, for Northern Ireland on the 1 July and for Scotland on the 28 February the following year. Defining ages in this way matches the assignment of children to school cohorts. For applicants outside of the UK a cohort cut off of 31 August has been used.

#### Provider

A higher education provider - a university or college.

#### UK domiciled

Declared area of permanent residence within England, Northern Ireland, Scotland and Wales. Applicants from the Channel Islands and Isle of Man are not included.