

## English providers

**Cycle years:** 2010 - 2015

**Cycle Reference Point:** End of Cycle

**Applicant coverage:** UK domiciled

**Reporting groups:** Sex, POLAR3, ethnic group

**Applicant statistics:** June deadline applicants, placed June deadline applicants, all placed applicants, June deadline applicants per 10,000 population, placed June deadline applicants per 10,000 population, all placed applicants per 10,000 population

**Application statistics:** June deadline applications, offers, offer rate, average offer rate, percentage point difference between offer rate and average offer rate, contribution of group to the average offer rate

**Non-disclosure controls:** To avoid the disclosure of information about any individual the following measures are taken

- Applicants, placed applicants, applications and offers are rounded to the nearest 5.
- Applicants/placed applicants per 10,000 population figures are reported as 0 if the applicant/placed applicant figures are rounded to 0.
- All statistics related to the offer rate are not reported when the number of applications for a group is less than 10. The percentage point difference between the offer rate and the average offer rate is not reported when the number of applications for a group is less than 50.
- Offer rates are reported as 0% if there are fewer than 5 offers, and 100% if the number of offers is within 5 of the number of applications. When the offer rate is reported as 0% or 100%, it is reported in italics.

## Contents:

18 year old applicants:	P.1
18 year old applications:	P.2
18 year old applicants by sex:	P.3
18 year old applications by sex:	P.4
18 year old applicants by POLAR3 quintile:	P.7
18 year old applications by POLAR3 quintile:	P.8
18 year old applicants by ethnic group:	P.11
18 year old applications by ethnic group:	P.12
Applicants (all ages):	P.15
Applications (all ages):	P.16
Applicants (all ages) by sex:	P.17
Applications (all ages) by sex:	P.18
Applicants (all ages) by POLAR3 quintile:	P.19
Applications (all ages) by POLAR3 quintile:	P.20
Applicants (all ages) by ethnic group:	P.21
Applications (all ages) by ethnic group:	P.22

## P.1 18 year old applicants

Statistic	2010	2011	2012	2013	2014	2015
June deadline applicants	242,290	242,620	232,260	234,665	241,170	250,920
Placed June deadline applicants	156,715	158,530	152,875	159,895	163,030	172,430
All placed applicants	177,060	182,490	176,845	183,635	188,875	200,055
June deadline applicants per 10,000 population	3,068.8	3,150.5	3,002.7	3,083.7	3,202.1	3,275.1
Placed June deadline applicants per 10,000	1,984.9	2,058.6	1,976.4	2,101.2	2,164.6	2,250.6
All placed applicants per 10,000 population	2,242.6	2,369.7	2,286.3	2,413.1	2,507.8	2,611.2

## P.2 18 year old applications

Statistic	2010	2011	2012	2013	2014	2015
June deadline applications	1,034,930	1,057,030	1,009,115	1,011,260	1,043,275	1,088,590
Offers	726,775	722,975	719,595	762,820	799,405	843,525
Offer rate	70.2%	68.4%	71.3%	75.4%	76.6%	77.5%

### P.3 18 year old applicants by sex

Statistic	Sex	2010	2011	2012	2013	2014	2015
June deadline applicants	Men	108,060	108,155	102,180	103,560	106,605	109,150
	Women	134,225	134,465	130,080	131,105	134,560	141,765
Placed June deadline applicants	Men	70,380	71,500	67,935	71,415	72,675	75,505
	Women	86,335	87,030	84,935	88,480	90,355	96,925
All placed applicants	Men	79,575	82,020	78,525	81,735	84,075	87,460
	Women	97,485	100,470	98,320	101,900	104,800	112,600
June deadline applicants per 10,000 population	Men	2,690.4	2,748.5	2,576.5	2,652.6	2,753.9	2,781.4
	Women	3,460.6	3,570.6	3,451.0	3,537.9	3,676.1	3,793.5
Placed June deadline applicants per 10,000 population	Men	1,752.2	1,817.0	1,713.1	1,829.2	1,877.4	1,924.0
	Women	2,225.9	2,311.0	2,253.4	2,387.7	2,468.3	2,593.5
All placed applicants per 10,000 population	Men	1,981.1	2,084.3	1,980.0	2,093.6	2,171.8	2,228.6
	Women	2,513.4	2,667.9	2,608.5	2,749.8	2,863.0	3,013.0

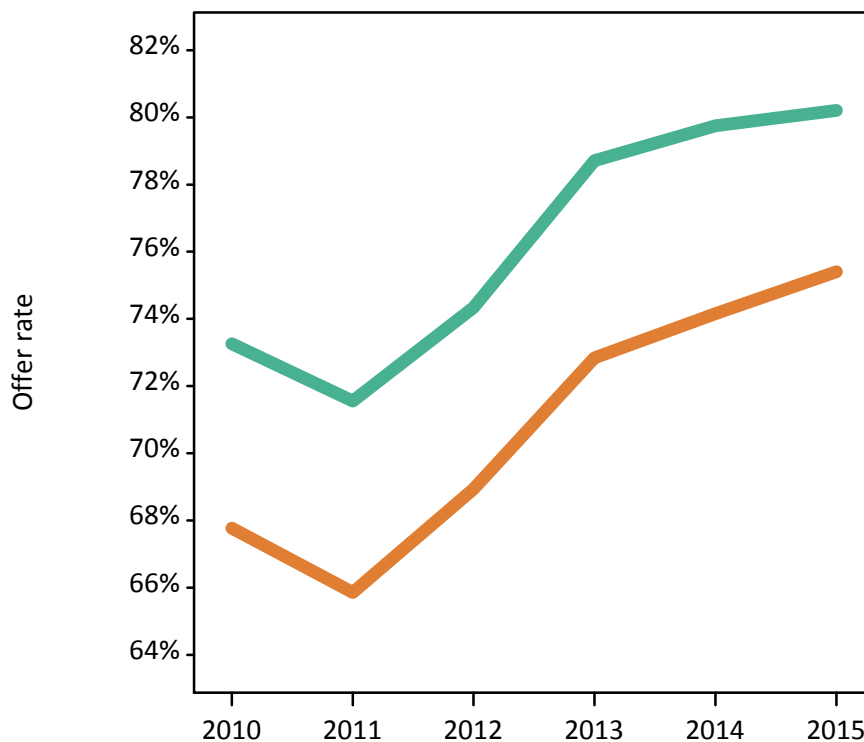
### P.4 18 year old applications by sex

Statistic	Sex	2010	2011	2012	2013	2014	2015
June deadline applications	Men	462,545	471,525	444,320	446,380	460,945	472,255
	Women	572,390	585,505	564,790	564,875	582,335	616,335
Offers	Men	338,845	337,415	330,280	351,350	367,580	378,775
	Women	387,930	385,560	389,315	411,475	431,825	464,750
Offer rate	Men	73.3%	71.6%	74.3%	78.7%	79.7%	80.2%
	Women	67.8%	65.9%	68.9%	72.8%	74.2%	75.4%
Average offer rate	Men	73.6%	71.9%	74.7%	79.0%	80.0%	80.5%
	Women	67.5%	65.6%	68.6%	72.6%	73.9%	75.2%
Percentage point difference between offer rate and average offer rate	Men	-0.3	-0.4	-0.4	-0.3	-0.3	-0.3
	Women	0.3	0.3	0.3	0.2	0.2	0.3
Contribution of group to the average offer rate	Men	0.606	0.606	0.605	0.610	0.613	0.607
	Women	0.682	0.682	0.689	0.692	0.694	0.699

### P.5 18 year old offer rate by sex

Note: The line for a group is not plotted when that group made fewer than 10 applications in any of the years from 2010-2015.

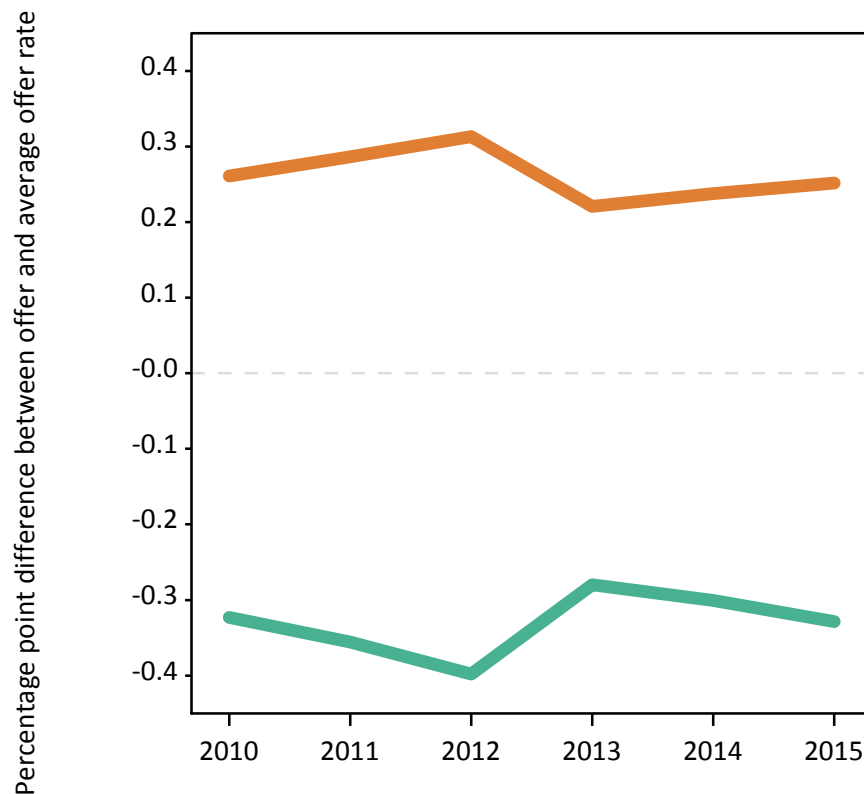
Men  
Women



### P.6 Percentage point difference between 18 year old offer rate and average offer rate by sex

Note: The line for a group is not plotted when that group made fewer than 50 applications in any of the years from 2010-2015.

Men  
Women



## P.7 18 year old applicants by POLAR3 quintile

Statistic	POLAR3 quintile	2010	2011	2012	2013	2014	2015
June deadline applicants	Quintile 1	25,395	25,605	24,570	25,215	27,210	28,290
	Quintile 2	36,085	36,690	35,220	36,045	37,655	39,390
	Quintile 3	46,630	46,530	44,920	45,695	47,065	49,090
	Quintile 4	57,580	57,250	54,430	55,035	55,455	57,995
	Quintile 5	76,070	76,060	72,655	72,275	73,330	75,530
Placed June deadline applicants	Quintile 1	16,035	16,225	16,120	17,115	18,465	19,295
	Quintile 2	23,055	23,580	23,070	24,610	25,670	26,955
	Quintile 3	29,890	30,140	29,245	31,095	31,625	33,620
	Quintile 4	37,360	37,475	35,745	37,310	37,390	39,910
	Quintile 5	50,050	50,820	48,435	49,535	49,605	52,240
All placed applicants	Quintile 1	17,990	18,625	18,600	19,645	21,270	22,365
	Quintile 2	26,095	27,165	26,815	28,260	29,725	31,300
	Quintile 3	34,205	35,205	34,400	36,145	37,095	39,590
	Quintile 4	42,140	43,105	41,280	42,930	43,305	46,090
	Quintile 5	56,255	58,040	55,430	56,360	57,140	60,200
June deadline applicants per 10,000 population	Quintile 1	1,715.6	1,781.3	1,724.8	1,809.3	1,955.3	2,019.0
	Quintile 2	2,346.8	2,440.6	2,349.0	2,446.2	2,573.4	2,652.1
	Quintile 3	2,932.3	3,023.8	2,909.0	2,996.1	3,127.2	3,197.0
	Quintile 4	3,615.8	3,655.2	3,430.1	3,518.8	3,598.5	3,704.7
	Quintile 5	4,488.6	4,595.2	4,324.6	4,370.9	4,496.2	4,511.8
Placed June deadline applicants per 10,000 population	Quintile 1	1,083.5	1,128.7	1,131.5	1,228.1	1,327.0	1,377.1
	Quintile 2	1,499.3	1,568.5	1,538.7	1,670.0	1,754.5	1,814.9
	Quintile 3	1,879.6	1,958.7	1,893.7	2,039.0	2,101.4	2,189.6
	Quintile 4	2,345.9	2,392.5	2,252.6	2,385.6	2,426.4	2,549.4
	Quintile 5	2,953.2	3,070.3	2,883.0	2,995.8	3,041.4	3,120.5
All placed applicants per 10,000 population	Quintile 1	1,215.3	1,295.9	1,305.5	1,409.7	1,528.6	1,596.4
	Quintile 2	1,697.1	1,807.0	1,788.6	1,917.8	2,031.6	2,107.3
	Quintile 3	2,150.9	2,287.7	2,227.5	2,369.9	2,465.0	2,578.3
	Quintile 4	2,646.2	2,752.1	2,601.4	2,744.8	2,810.2	2,944.3
	Quintile 5	3,319.2	3,506.5	3,299.3	3,408.5	3,503.6	3,596.1

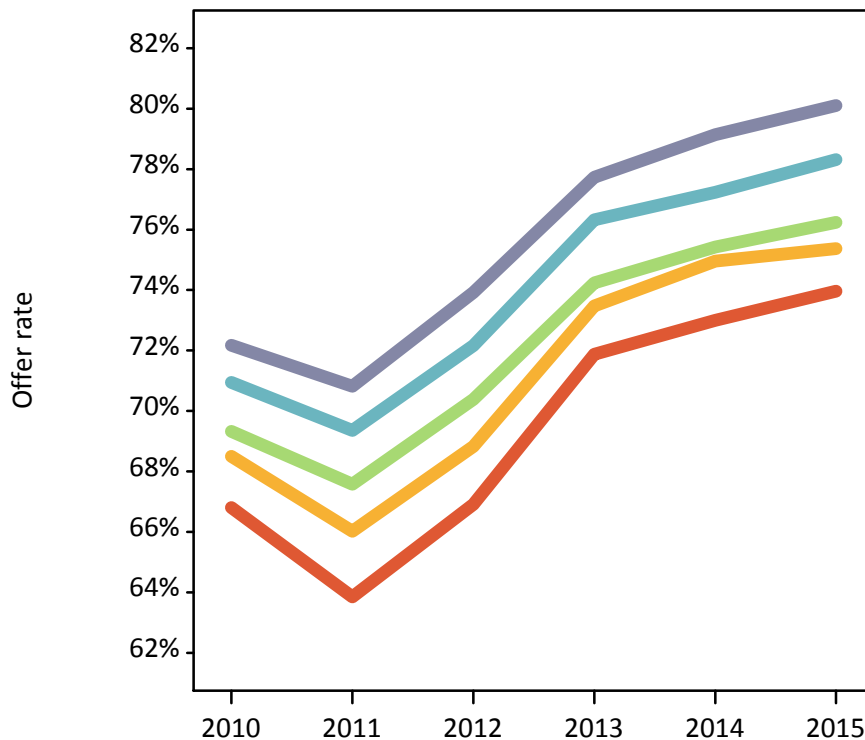
## P.8 18 year old applications by POLAR3 quintile

Statistic	POLAR3 quintile	2010	2011	2012	2013	2014	2015
June deadline applications	Quintile 1	105,145	109,335	104,590	106,240	115,670	120,585
	Quintile 2	153,175	158,800	152,210	154,915	162,690	170,545
	Quintile 3	200,890	204,040	196,505	198,785	205,830	215,285
	Quintile 4	246,490	249,600	236,395	237,460	239,530	251,185
	Quintile 5	327,070	333,210	317,455	312,160	317,615	328,295
Offers	Quintile 1	70,245	69,805	69,985	76,365	84,445	89,185
	Quintile 2	104,925	104,840	104,755	113,820	121,950	128,545
	Quintile 3	139,260	137,885	138,315	147,565	155,255	164,125
	Quintile 4	174,875	173,110	170,585	181,230	185,000	196,715
	Quintile 5	236,055	235,975	234,650	242,665	251,345	262,975
Offer rate	Quintile 1	66.8%	63.8%	66.9%	71.9%	73.0%	74.0%
	Quintile 2	68.5%	66.0%	68.8%	73.5%	75.0%	75.4%
	Quintile 3	69.3%	67.6%	70.4%	74.2%	75.4%	76.2%
	Quintile 4	70.9%	69.4%	72.2%	76.3%	77.2%	78.3%
	Quintile 5	72.2%	70.8%	73.9%	77.7%	79.1%	80.1%
Average offer rate	Quintile 1	68.1%	65.3%	68.0%	73.1%	74.2%	75.1%
	Quintile 2	69.4%	66.8%	69.3%	74.0%	75.3%	76.0%
	Quintile 3	69.8%	68.0%	70.8%	74.7%	75.8%	76.6%
	Quintile 4	70.8%	69.1%	72.1%	76.0%	77.1%	78.1%
	Quintile 5	71.2%	69.9%	73.1%	77.1%	78.4%	79.3%
Percentage point difference between offer rate and average offer rate	Quintile 1	-1.2	-1.4	-1.1	-1.2	-1.2	-1.1
	Quintile 2	-0.9	-0.7	-0.5	-0.5	-0.4	-0.6
	Quintile 3	-0.4	-0.4	-0.4	-0.4	-0.4	-0.4
	Quintile 4	0.1	0.2	0.1	0.3	0.2	0.2
	Quintile 5	1.0	0.9	0.8	0.7	0.8	0.8
Contribution of group to the average offer rate	Quintile 1	0.209	0.210	0.211	0.212	0.216	0.213
	Quintile 2	0.233	0.235	0.237	0.240	0.239	0.239
	Quintile 3	0.265	0.263	0.267	0.267	0.267	0.265
	Quintile 4	0.300	0.297	0.297	0.296	0.290	0.291
	Quintile 5	0.410	0.408	0.410	0.406	0.403	0.399

### P.9 18 year old offer rate by POLAR3 quintile

Note: The line for a group is not plotted when that group made fewer than 10 applications in any of the years from 2010-2015.

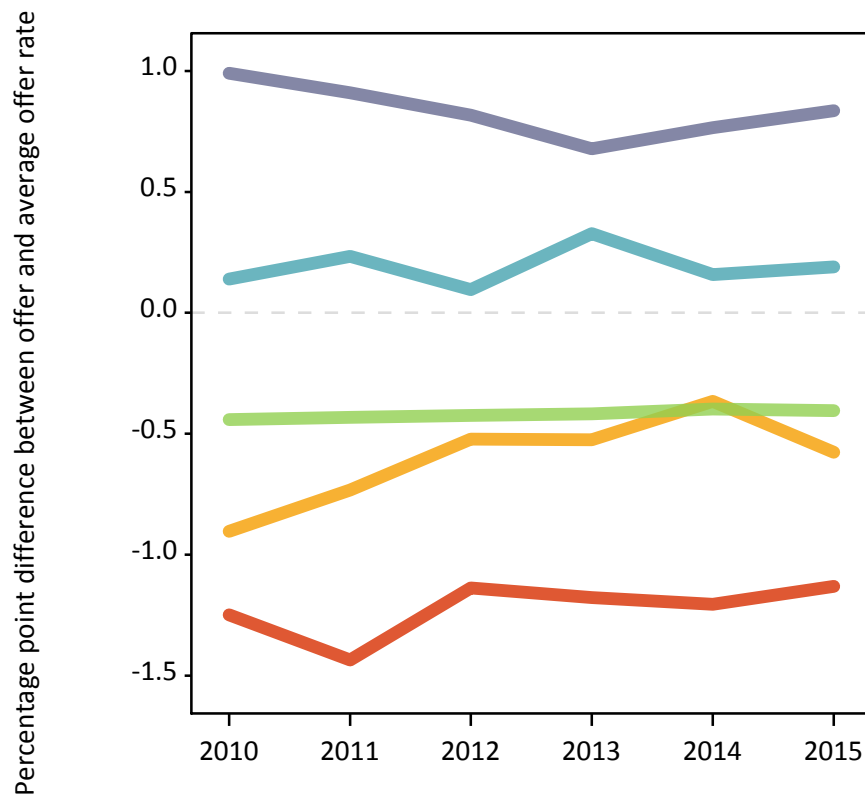
- Quintile 1
- Quintile 2
- Quintile 3
- Quintile 4
- Quintile 5



### P.10 Percentage point difference between 18 year old offer rate and average offer rate by POLAR3 quintile

Note: The line for a group is not plotted when that group made fewer than 50 applications in any of the years from 2010-2015.

- Quintile 1
- Quintile 2
- Quintile 3
- Quintile 4
- Quintile 5



## P.11 18 year old applicants by ethnic group

Statistic	Ethnic group	2010	2011	2012	2013	2014	2015
June deadline applicants	Asian	23,625	24,605	24,395	25,430	26,995	28,940
	Black	9,290	10,155	10,205	11,505	12,195	13,305
	Mixed	7,895	8,625	8,430	8,880	9,550	10,640
	White	197,920	195,615	185,420	185,045	188,205	193,090
	Other	2,095	2,285	2,630	2,745	3,175	3,440
Placed June deadline applicants	Asian	14,550	14,950	14,730	16,360	17,075	18,715
	Black	5,320	5,850	6,035	7,175	7,490	8,400
	Mixed	5,110	5,625	5,585	6,010	6,570	7,355
	White	129,500	129,845	124,215	127,935	129,290	134,750
	Other	1,285	1,390	1,570	1,720	1,970	2,200
All placed applicants	Asian	18,730	19,825	19,760	21,240	22,525	24,605
	Black	7,315	8,320	8,500	9,795	10,350	11,540
	Mixed	5,885	6,705	6,585	7,040	7,725	8,720
	White	142,230	144,690	138,845	142,290	144,690	150,925
	Other	1,670	1,855	2,130	2,250	2,615	2,930
June deadline applicants per 10,000 population	Asian	3,821.8	3,904.0	3,766.8	3,855.6	3,980.9	4,089.8
	Black	3,549.7	3,714.0	3,623.3	3,875.6	4,022.6	4,181.3
	Mixed	3,408.5	3,561.5	3,237.2	3,285.0	3,319.4	3,451.6
	White	2,951.1	3,021.4	2,871.7	2,940.8	3,050.6	3,098.8
	Other	2,723.7	2,818.6	2,974.5	3,026.1	3,412.3	3,574.2
Placed June deadline applicants per 10,000 population	Asian	2,353.7	2,372.5	2,274.4	2,480.2	2,518.1	2,644.6
	Black	2,032.7	2,140.5	2,143.1	2,416.7	2,471.0	2,640.1
	Mixed	2,206.0	2,321.6	2,143.4	2,223.2	2,283.6	2,385.7
	White	1,930.9	2,005.6	1,923.7	2,033.2	2,095.6	2,162.5
	Other	1,670.3	1,713.6	1,776.5	1,896.8	2,114.4	2,285.5
All placed applicants per 10,000 population	Asian	3,030.0	3,145.6	3,050.9	3,220.1	3,321.9	3,477.1
	Black	2,794.5	3,042.8	3,018.5	3,299.6	3,414.2	3,627.3
	Mixed	2,541.0	2,767.9	2,528.5	2,603.4	2,684.3	2,828.8
	White	2,120.7	2,234.9	2,150.4	2,261.4	2,345.2	2,422.1
	Other	2,170.4	2,287.7	2,409.4	2,479.1	2,810.6	3,042.5



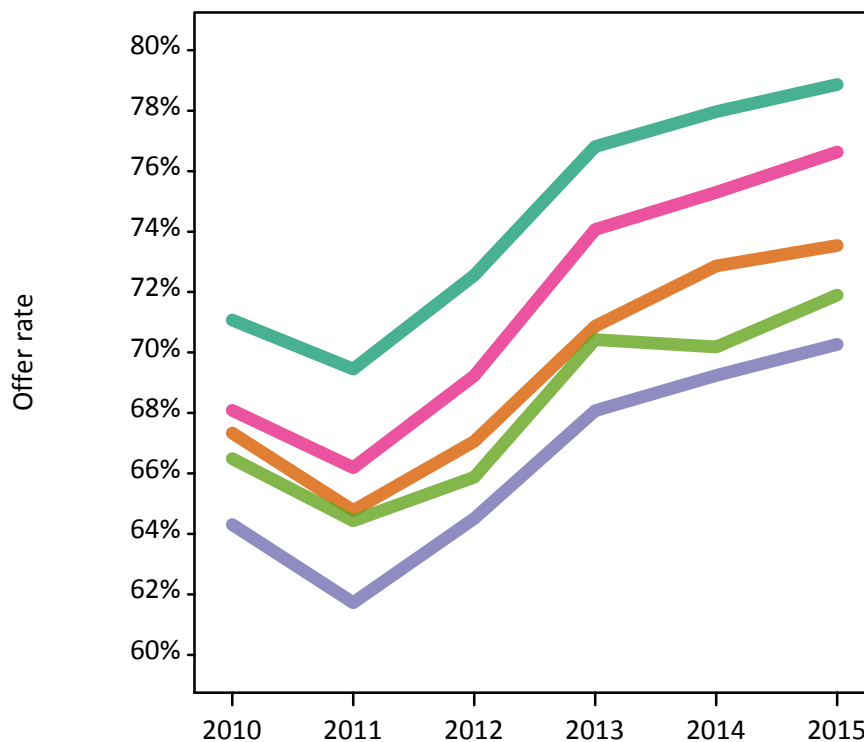
## P.12 18 year old applications by ethnic group

Statistic	Ethnic group	2010	2011	2012	2013	2014	2015
June deadline applications	Asian	111,125	116,740	115,185	119,430	126,395	135,565
	Black	44,350	48,825	49,030	54,885	58,045	63,545
	Mixed	35,170	39,135	38,115	39,755	42,770	47,760
	White	828,155	835,665	789,285	779,705	796,685	819,020
	Other	9,815	10,785	12,340	12,825	14,825	16,075
Offers	Asian	74,820	75,615	77,245	84,645	92,100	99,700
	Black	28,520	30,135	31,630	37,360	40,195	44,650
	Mixed	23,945	25,900	26,385	29,445	32,205	36,600
	White	588,605	580,385	572,630	598,940	621,180	645,965
	Other	6,525	6,950	8,130	9,030	10,405	11,555
Offer rate	Asian	67.3%	64.8%	67.1%	70.9%	72.9%	73.5%
	Black	64.3%	61.7%	64.5%	68.1%	69.2%	70.3%
	Mixed	68.1%	66.2%	69.2%	74.1%	75.3%	76.6%
	White	71.1%	69.5%	72.6%	76.8%	78.0%	78.9%
	Other	66.5%	64.4%	65.9%	70.4%	70.2%	71.9%
Average offer rate	Asian	68.4%	66.2%	68.4%	72.0%	73.9%	74.6%
	Black	67.0%	64.6%	67.9%	71.0%	72.1%	72.8%
	Mixed	68.4%	66.9%	69.7%	74.4%	75.7%	76.9%
	White	70.8%	69.0%	72.1%	76.4%	77.5%	78.4%
	Other	67.5%	66.5%	68.5%	71.9%	72.5%	73.9%
Percentage point difference between offer rate and average offer rate	Asian	-1.0	-1.4	-1.4	-1.1	-1.0	-1.0
	Black	-2.7	-2.9	-3.3	-2.9	-2.8	-2.5
	Mixed	-0.3	-0.7	-0.5	-0.3	-0.4	-0.3
	White	0.3	0.4	0.5	0.4	0.4	0.4
	Other	-1.1	-2.0	-2.6	-1.5	-2.3	-2.0
Contribution of group to the average offer rate	Asian	0.333	0.323	0.322	0.318	0.311	0.311
	Black	0.186	0.188	0.189	0.195	0.188	0.184
	Mixed	0.112	0.117	0.118	0.117	0.117	0.119
	White	0.856	0.847	0.840	0.831	0.823	0.814
	Other	0.111	0.107	0.121	0.114	0.116	0.112

### P.13 18 year old offer rate by ethnic group

Note: The line for a group is not plotted when that group made fewer than 10 applications in any of the years from 2010-2015.

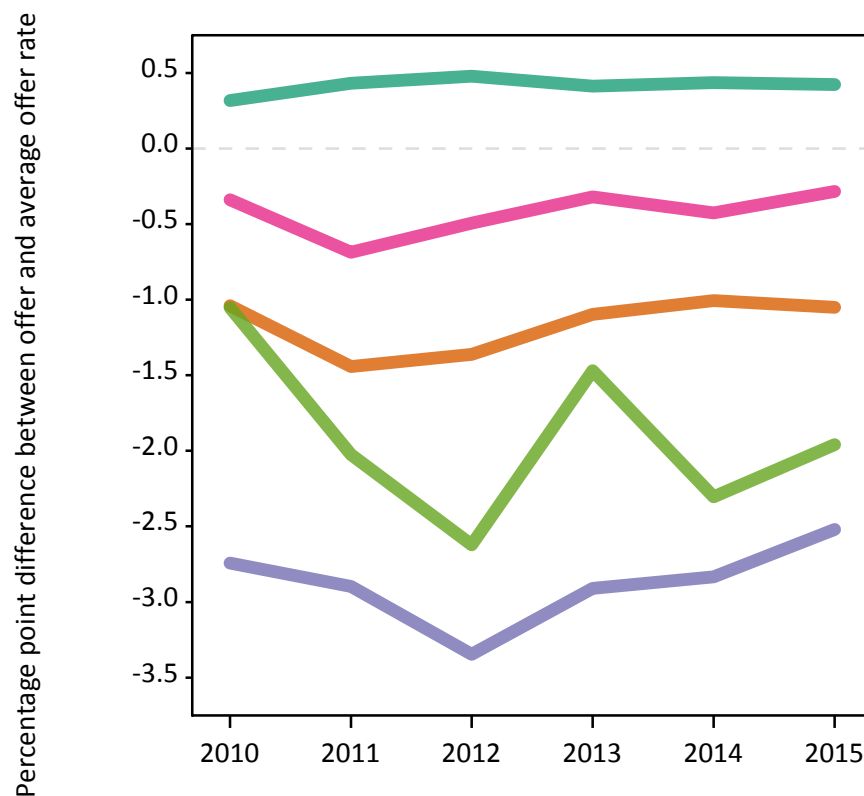
- Asian
- Black
- Mixed
- White
- Other



### P.14 Percentage point difference between 18 year old offer rate and average offer rate by ethnic group

Note: The line for a group is not plotted when that group made fewer than 50 applications in any of the years from 2010-2015.

- Asian
- Black
- Mixed
- White
- Other



### P.15 Applicants (all ages)

Statistic	2010	2011	2012	2013	2014	2015
June deadline applicants	502,025	507,485	457,965	471,035	487,145	491,190
Placed June deadline applicants	304,995	308,425	279,540	300,775	309,170	318,095
All placed applicants	356,395	364,075	340,740	365,250	379,410	392,480

### P.16 Applications (all ages)

Statistic	2010	2011	2012	2013	2014	2015
June deadline applications	1,955,140	2,043,540	1,845,305	1,881,515	1,954,270	1,979,080
Offers	1,152,445	1,164,570	1,106,675	1,205,330	1,270,425	1,322,025
Offer rate	58.9%	57.0%	60.0%	64.1%	65.0%	66.8%

### P.17 Applicants (all ages) by sex

Statistic	Sex	2010	2011	2012	2013	2014	2015
June deadline applicants	Men	215,290	218,750	194,435	200,725	206,625	207,650
	Women	286,735	288,740	263,530	270,310	280,520	283,535
Placed June deadline applicants	Men	134,710	137,840	123,135	132,970	135,435	138,035
	Women	170,285	170,585	156,405	167,805	173,735	180,060
All placed applicants	Men	158,770	163,065	151,260	162,430	167,410	171,340
	Women	197,625	201,010	189,480	202,820	212,000	221,145

### P.18 Applications (all ages) by sex

Statistic	Sex	2010	2011	2012	2013	2014	2015
June deadline applications	Men	860,085	898,780	797,995	814,235	842,435	848,115
	Women	1,095,055	1,144,760	1,047,305	1,067,280	1,111,835	1,130,965
Offers	Men	543,605	551,240	516,970	564,300	590,805	604,940
	Women	608,835	613,330	589,705	641,030	679,620	717,080
Offer rate	Men	63.2%	61.3%	64.8%	69.3%	70.1%	71.3%
	Women	55.6%	53.6%	56.3%	60.1%	61.1%	63.4%

### P.19 Applicants (all ages) by POLAR3 quintile

Statistic	POLAR3 quintile	2010	2011	2012	2013	2014	2015
June deadline applicants	Quintile 1	63,475	65,220	60,170	62,170	66,330	66,160
	Quintile 2	81,940	83,735	76,130	78,825	82,760	83,280
	Quintile 3	102,580	103,980	93,995	96,830	100,310	100,920
	Quintile 4	114,415	114,575	102,630	105,730	107,930	109,060
	Quintile 5	138,030	138,525	123,750	126,390	128,680	130,265
Placed June deadline applicants	Quintile 1	36,885	37,895	35,850	39,045	41,670	42,080
	Quintile 2	48,665	49,925	45,835	49,970	52,370	53,430
	Quintile 3	61,005	61,660	56,070	60,850	62,610	64,430
	Quintile 4	70,270	70,150	63,030	67,865	68,665	71,005
	Quintile 5	87,295	87,995	78,105	82,455	83,245	86,270
All placed applicants	Quintile 1	42,905	44,495	43,610	47,220	50,735	51,760
	Quintile 2	57,130	58,810	56,225	60,690	64,225	65,940
	Quintile 3	72,550	74,330	70,210	75,830	78,960	81,890
	Quintile 4	81,940	82,755	76,555	82,320	84,235	87,275
	Quintile 5	100,740	102,680	93,185	98,320	100,390	104,255

### P.20 Applications (all ages) by POLAR3 quintile

Statistic	POLAR3 quintile	2010	2011	2012	2013	2014	2015
June deadline applications	Quintile 1	229,975	249,115	230,110	234,305	252,560	253,980
	Quintile 2	309,935	329,070	300,440	308,810	326,265	329,935
	Quintile 3	402,550	421,075	382,115	390,900	406,465	410,920
	Quintile 4	450,835	465,025	416,290	426,600	435,995	442,415
	Quintile 5	555,795	573,505	511,270	516,615	528,530	535,895
Offers	Quintile 1	125,045	128,045	124,665	138,155	152,195	157,190
	Quintile 2	175,475	178,885	170,880	189,680	204,060	211,640
	Quintile 3	228,990	230,695	221,080	241,750	255,530	265,420
	Quintile 4	271,300	271,555	255,655	279,575	288,360	301,315
	Quintile 5	348,585	352,535	331,785	353,785	367,685	382,945
Offer rate	Quintile 1	54.4%	51.4%	54.2%	59.0%	60.3%	61.9%
	Quintile 2	56.6%	54.4%	56.9%	61.4%	62.5%	64.1%
	Quintile 3	56.9%	54.8%	57.9%	61.8%	62.9%	64.6%
	Quintile 4	60.2%	58.4%	61.4%	65.5%	66.1%	68.1%
	Quintile 5	62.7%	61.5%	64.9%	68.5%	69.6%	71.5%

## P.21 Applicants (all ages) by ethnic group

Statistic	Ethnic group	2010	2011	2012	2013	2014	2015
June deadline applicants	Asian	51,350	54,405	51,150	52,915	55,815	58,150
	Black	40,985	43,795	41,480	41,420	43,470	44,585
	Mixed	18,315	19,390	17,745	18,765	20,370	21,645
	White	381,420	379,655	337,145	347,420	356,215	354,250
	Other	5,815	6,145	7,110	7,190	7,960	8,380
Placed June deadline applicants	Asian	28,930	30,255	28,565	31,465	32,725	34,840
	Black	18,760	19,765	19,300	20,740	21,625	22,810
	Mixed	11,025	11,870	10,950	12,065	13,020	14,200
	White	240,835	240,960	215,050	230,560	235,520	238,930
	Other	3,060	3,260	3,820	3,995	4,470	4,835
All placed applicants	Asian	38,855	41,135	40,265	43,230	45,715	48,870
	Black	26,405	28,785	29,800	31,460	34,840	36,285
	Mixed	13,170	14,365	13,670	15,020	16,435	17,875
	White	268,525	271,100	247,475	264,965	271,145	276,490
	Other	4,225	4,500	5,605	5,875	6,610	7,285

## P.22 Applications (all ages) by ethnic group

Statistic	Ethnic group	2010	2011	2012	2013	2014	2015
June deadline applications	Asian	225,840	243,690	228,975	236,095	248,770	259,185
	Black	174,130	191,205	182,050	181,800	190,110	195,040
	Mixed	75,055	82,125	74,770	78,670	85,280	91,035
	White	1,439,080	1,483,390	1,314,960	1,340,240	1,382,305	1,380,395
	Other	24,850	26,745	31,105	31,365	34,745	36,690
Offers	Asian	130,880	135,035	133,400	146,715	158,185	168,390
	Black	70,030	71,440	72,915	80,870	86,760	93,245
	Mixed	41,990	44,980	43,690	49,315	54,345	60,015
	White	887,905	891,065	832,720	902,655	943,515	968,265
	Other	13,050	13,675	16,800	18,310	20,490	22,145
Offer rate	Asian	58.0%	55.4%	58.3%	62.1%	63.6%	65.0%
	Black	40.2%	37.4%	40.1%	44.5%	45.6%	47.8%
	Mixed	55.9%	54.8%	58.4%	62.7%	63.7%	65.9%
	White	61.7%	60.1%	63.3%	67.4%	68.3%	70.1%
	Other	52.5%	51.1%	54.0%	58.4%	59.0%	60.4%

## Technical Notes and Definitions

### UCAS undergraduate scheme

#### Adjustment

Adjustment allows applicants who have met and exceeded the terms of their conditional firm offer to seek and find a place at another provider whilst keeping their place at their original firm choice provider.

#### Clearing

Clearing is a route for applicants that are not placed and holding no offers to find a place on courses with vacancies.

#### Cycle year

The UCAS application cycle which runs from September to October the following year. For example the 2015 cycle runs from September 2014 through to October 2015.

#### End of cycle

The point in the cycle to which the numbers in this report refer, and the point at which the cycle is closed such that no more applications or offers can be made, and no more applicants can be placed. Numbers reported at the end of cycle exclude information on a small number of applicants who cancelled during the cycle.

#### Extra

Applicants who are unsuccessful in obtaining an offer or decline all offers may be eligible to apply through Extra, where they can apply to one further course at a time. Extra operates from 25 February until early July. It provides applicants who are eligible the possibility of obtaining an offer before exam results are published and Clearing starts.

#### June 30 deadline

The deadline for main scheme applications. Applicants who apply after this date will go directly into Clearing.

#### Record of Prior Acceptance (RPA)

RPA is an acceptance route used when a provider informs UCAS of applicants it has accepted outside of the normal application process (e.g. individuals who have applied directly to the provider).

### Reporting groups

#### Ethnic group

High level grouping of ethnic origin as declared by the applicant: 'White', 'Black', 'Asian', 'Mixed', 'Other', 'Unknown'. Applicants who declare themselves as 'Unknown' ethnic origin are not reported in these tables, but are included in the associated csv data file.

#### POLAR3 quintile

Developed by HEFCE, POLAR3 classifies small areas across the UK into five groups according to their level of young participation in Higher Education. Each of these groups represents around 20 per cent of young people and is ranked from Quintile 1 (areas with the lowest young participation rates, considered as the most disadvantaged) to Quintile 5 (highest young participation rates, considered most advantaged). POLAR3 is based on the participation rates of young people between 2005 and 2009 who entered Higher Education between 2005-06 and 2010-11, therefore is most suitable for applicants aged 19 and under. These groups are assigned using the postcode declared by the applicant at the time of their application. If a UK postcode is invalid, considered unsafe for measurement or there is no link to Census geography possible then the applicant is not assigned to a quintile. Applicants with no POLAR3 quintile are not reported.

#### Sex

Sex as declared by the applicant.

### **SIMD quintile**

Scottish index of multiple deprivation (SIMD) for 2012 identifies small area concentrations of multiple deprivation across all of Scotland, providing a relative measure of deprivation amongst 6505 small areas (data zones) based on 7 socio-economic domains. These small areas are classified into five groups ranked from Quintile 1 (considered the most deprived) to Quintile 5 (considered least deprived), with equal populations in each quintile. Quintiles are assigned using the postcode declared by the applicant, applicants declaring invalid postcodes are classified as 'Not assigned' and are not reported.

SIMD is only defined for applicants domiciled in Scotland, therefore any applicants domiciled outside of Scotland cannot be assigned to an SIMD quintile and so are not reported for this measure.

SIMD is only reported for providers in Scotland. Application and entry rates by SIMD are reported in the 2015 End of Cycle Report and the 2016 cycle January deadline application rate report.

### **Statistics reported in the tables**

#### **All placed applicants**

The number of applicants placed for entry into higher education at the provider through one of their choices, including any choices made through Extra, or via Adjustment, Clearing or RPA.

#### **All placed applicants per 10,000 population**

The number of total UK domiciled 18 year old placed applicants for entry into higher education at the provider divided by the number of UK 18 year olds in the population, multiplied by 10,000. This gives the number of 18 year olds, for every 10,000 in the population, that were placed at the provider through one of their choices, including any choices made through Extra, or via Adjustment, Clearing or RPA. It is an alternative way of expressing the entry rate to a provider. By referencing the underlying population this statistic shows how the number of placed applicants is changing in relation to the available pool of potential applicants and so gives the chance that somebody from the group will be placed at a provider.

This statistic is only reported for 18 year olds.

#### **Average offer rate**

The offer rate that you might expect if the predicted grades and subject choice of applicants were the only factors that influenced whether an applicant was made an offer by the provider. The average offer rate is calculated by dividing applicants according to their specific combination of grades (for A levels the best three predicted grades are used, for BTECs, International Baccalaureate and Scottish Highers and Advanced Highers, predicted grades along with any grades already achieved upon applying are used) and subject choice. For each combination the number of main scheme offers is divided by the number of main scheme applications, to give an overall offer rate. This is then multiplied by the number of applications made by the group for which the average offer rate is being calculated (for example POLAR3 quintile 1), to give an average number of offers for that group. These average number of offers are then added together across all combinations of predicted grade and subject and divided by the number of main scheme applications from the group to give the average offer rate.

The average offer rate does not attempt to control for any other factors that may play a part in the decision to make an offer, such as the subject of the qualifications studied, their relevance to a course, or the grade in each subject; higher numbers of A levels being studied; the exact profile of grades predicted; personal statements; teacher references; interviews; or any other criteria (such as work experience or portfolios) that may be part of the admissions decision.

This statistic is only reported for 18 year olds.



### Contribution of group to the average offer rate

The way in which the average offer rate is defined means that the pattern of application and offers of a group (for example POLAR3 quintile 1) will always contribute, in part, to the average offer rate for that group. When this contribution is large, the average offer rate will mainly reflect the patterns for the group, meaning that the value of the average offer rate will be similar to the offer rate, the percentage point difference statistic will be small, and any real difference between the offer rate and what might be expected given the predicted grades and subject choices of the applicants will be difficult to detect.

Values of the contribution of group to the average offer rate range between 0 and 1. The closer the value is to 1 the greater the contribution a group makes to its own average offer rate.

This statistic is only reported for 18 year olds.

### Placed June deadline applicants

An applicant who has been placed for entry into higher education at the provider through a June deadline application.

### Placed June deadline applicants per 10,000 population

The number of UK domiciled 18 year old placed June deadline applicants at the provider divided by the number of UK 18 year olds in the population, multiplied by 10,000. This gives the number of 18 year olds, for every 10,000 in the population, that were placed at the provider through one of their June deadline applications. It is an alternative way of expressing the entry rate to a provider, but for placed June deadline applicants only. By referencing the underlying population this statistic shows how the number of placed June deadline applicants is changing in relation to the available pool of potential 18 year old applicants and so gives the chance that somebody from the group will be placed at a provider through a June deadline application.

This statistic is only reported for 18 year olds.

### June deadline applications

An application (or choice) to a course in higher education to the provider that is made by the June 30 deadline. Each applicant can make up to five choices this way. The number of June deadline applications does not include choices made through the following routes: Clearing, Extra, Adjustment and RPAs. Applications made to October deadline courses received after the October deadline are not included in these statistics.

### June deadline applicants

The number of applicants that made at least one application to the provider by the June 30 deadline.

### June deadline applicants per 10,000 population

The number of UK domiciled 18 year old June deadline applicants to the provider divided by the number of UK 18 year olds in the population, multiplied by 10,000. This gives the number of 18 year olds, for every 10,000 in the population, who applied by the June 30 deadline. It is equivalent to the application rate. By referencing the underlying population this statistic shows how the number of June deadline applicants is changing in relation to the available pool of potential 18 year old applicants and so gives the chance that somebody from the group will apply to a provider by the June 30 deadline.

This statistic is only reported for 18 year olds.

### Offers

An offer is defined as a provider's decision in response to an application to offer a place to an applicant, often subject to the applicant satisfying academic and/or other criteria, via a June deadline application (i.e. does not cover choices made through the following routes: Clearing, Extra, Adjustment and RPAs).

### Offer rate

The number of offers made divided by the number of June deadline applications. This gives the proportion of all June deadline applications to the provider that received an offer.

### Percentage point difference between offer rate and average offer rate

The offer rate minus the average offer rate.

The percentage point difference can be compared to the expected range of statistical variation resulting from the calculation of the average offer rate using the Average Offer Rate Lookup Table. Where the value of the percentage point difference lies outside of this range, the percentage point difference may be considered to represent a real difference between the offer rate and the average offer rate.

### Other definitions

#### Age

This analysis uses country-specific age definitions that align with the cut off points for school and college cohorts within the different administrations of the UK. For England and Wales, ages are defined on the 31 August, for Northern Ireland on the 1 July and for Scotland on the 28 February the following year. Defining ages in this way matches the assignment of children to school cohorts. For applicants outside of the UK a cohort cut off of 31 August has been used.

#### Provider

A higher education provider - a university or college.

#### UK domiciled

Declared area of permanent residence within England, Northern Ireland, Scotland and Wales. Applicants from the Channel Islands and Isle of Man are not included.