

## Y75 York St John University

**Cycle years:** 2010 - 2015

**Cycle Reference Point:** End of Cycle

**Applicant coverage:** UK domiciled

**Reporting groups:** Sex, POLAR3, ethnic group

**Applicant statistics:** June deadline applicants, placed June deadline applicants, all placed applicants, June deadline applicants per 10,000 population, placed June deadline applicants per 10,000 population, all placed applicants per 10,000 population

**Application statistics:** June deadline applications, offers, offer rate, average offer rate, percentage point difference between offer rate and average offer rate, contribution of group to the average offer rate

**Non-disclosure controls:** To avoid the disclosure of information about any individual the following measures are taken

- Applicants, placed applicants, applications and offers are rounded to the nearest 5.
- Applicants/placed applicants per 10,000 population figures are reported as 0 if the applicant/placed applicant figures are rounded to 0.
- All statistics related to the offer rate are not reported when the number of applications for a group is less than 10. The percentage point difference between the offer rate and the average offer rate is not reported when the number of applications for a group is less than 50.
- Offer rates are reported as 0% if there are fewer than 5 offers, and 100% if the number of offers is within 5 of the number of applications. When the offer rate is reported as 0% or 100%, it is reported in italics.

### Contents:

18 year old applicants:	P.1
18 year old applications:	P.2
18 year old applicants by sex:	P.3
18 year old applications by sex:	P.4
18 year old applicants by POLAR3 quintile:	P.7
18 year old applications by POLAR3 quintile:	P.8
18 year old applicants by ethnic group:	P.11
18 year old applications by ethnic group:	P.12
Applicants (all ages):	P.15
Applications (all ages):	P.16
Applicants (all ages) by sex:	P.17
Applications (all ages) by sex:	P.18
Applicants (all ages) by POLAR3 quintile:	P.19
Applications (all ages) by POLAR3 quintile:	P.20
Applicants (all ages) by ethnic group:	P.21
Applications (all ages) by ethnic group:	P.22

## P.1 18 year old applicants

Statistic	2010	2011	2012	2013	2014	2015
June deadline applicants	4,485	4,995	5,885	5,890	5,220	4,725
Placed June deadline applicants	795	765	940	1,020	970	825
All placed applicants	850	985	1,040	1,175	1,085	940
June deadline applicants per 10,000 population	56.8	64.9	76.1	77.4	69.3	61.7
Placed June deadline applicants per 10,000	10.0	9.9	12.1	13.4	12.9	10.8
All placed applicants per 10,000 population	10.8	12.8	13.5	15.4	14.4	12.3

## P.2 18 year old applications

Statistic	2010	2011	2012	2013	2014	2015
June deadline applications	4,725	5,220	6,130	6,125	5,455	4,870
Offers	2,610	2,665	3,800	4,455	4,455	4,005
Offer rate	55.2%	51.1%	62.0%	72.8%	81.6%	82.2%

### P.3 18 year old applicants by sex

Statistic	Sex	2010	2011	2012	2013	2014	2015
June deadline applicants	Men	1,320	1,485	1,820	1,840	1,715	1,410
	Women	3,160	3,515	4,065	4,050	3,505	3,315
Placed June deadline applicants	Men	220	205	290	340	275	220
	Women	575	560	650	680	690	605
All placed applicants	Men	240	285	320	390	310	250
	Women	615	695	720	785	775	690
June deadline applicants per 10,000 population	Men	32.9	37.7	45.9	47.1	44.3	36.0
	Women	81.5	93.3	107.8	109.3	95.8	88.7
Placed June deadline applicants per 10,000 population	Men	5.5	5.3	7.3	8.8	7.2	5.6
	Women	14.8	14.8	17.2	18.3	18.9	16.2
All placed applicants per 10,000 population	Men	6.0	7.3	8.1	10.0	8.0	6.4
	Women	15.8	18.5	19.1	21.1	21.1	18.5

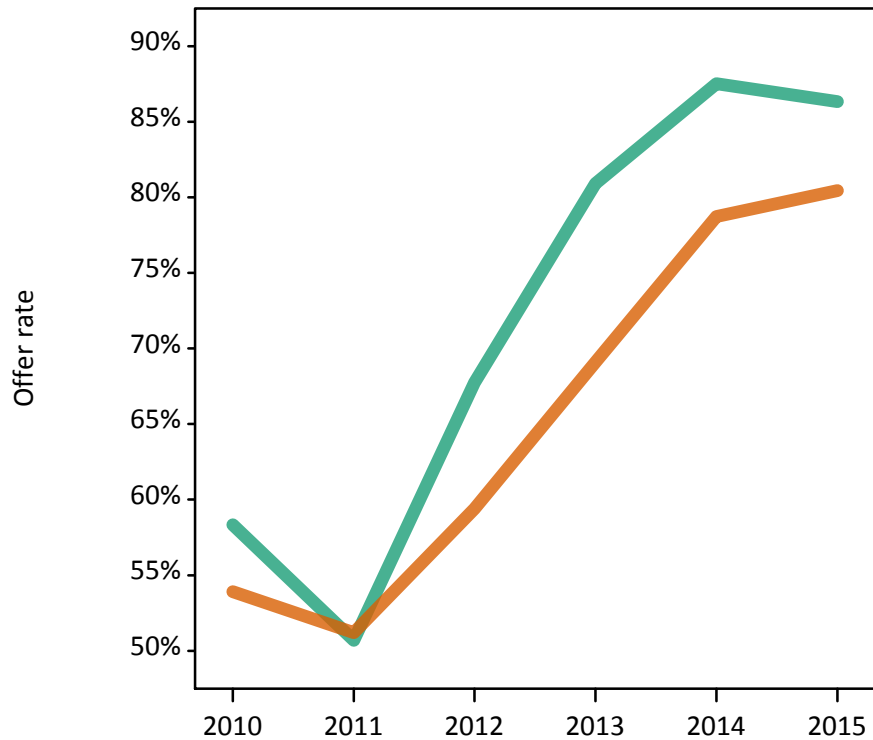
### P.4 18 year old applications by sex

Statistic	Sex	2010	2011	2012	2013	2014	2015
June deadline applications	Men	1,400	1,570	1,905	1,915	1,805	1,455
	Women	3,320	3,650	4,220	4,210	3,655	3,415
Offers	Men	820	795	1,290	1,550	1,580	1,260
	Women	1,790	1,870	2,510	2,910	2,875	2,745
Offer rate	Men	58.3%	50.7%	67.8%	80.9%	87.5%	86.3%
	Women	53.9%	51.2%	59.4%	69.1%	78.7%	80.5%
Average offer rate	Men	58.7%	51.1%	68.3%	80.6%	88.4%	86.6%
	Women	53.8%	51.0%	59.1%	69.3%	78.3%	80.3%
Percentage point difference between offer rate and average offer rate	Men	-0.4	-0.4	-0.6	0.3	-0.8	-0.3
	Women	0.2	0.2	0.3	-0.2	0.4	0.1
Contribution of group to the average offer rate	Men	0.499	0.499	0.518	0.482	0.525	0.489
	Women	0.789	0.784	0.782	0.765	0.766	0.782

### P.5 18 year old offer rate by sex

Note: The line for a group is not plotted when that group made fewer than 10 applications in any of the years from 2010-2015.

Men  
Women



### P.6 Percentage point difference between 18 year old offer rate and average offer rate by sex

Note: The line for a group is not plotted when that group made fewer than 50 applications in any of the years from 2010-2015.

Men  
Women



## P.7 18 year old applicants by POLAR3 quintile

Statistic	POLAR3 quintile	2010	2011	2012	2013	2014	2015
June deadline applicants	Quintile 1	705	745	930	950	965	880
	Quintile 2	835	910	1,050	1,185	995	895
	Quintile 3	910	1,015	1,205	1,195	1,045	960
	Quintile 4	1,020	1,155	1,350	1,260	1,130	1,020
	Quintile 5	1,005	1,165	1,345	1,295	1,065	960
Placed June deadline applicants	Quintile 1	110	85	145	170	170	130
	Quintile 2	160	140	160	190	160	175
	Quintile 3	150	160	195	225	215	155
	Quintile 4	190	185	220	225	225	185
	Quintile 5	175	195	225	210	200	175
All placed applicants	Quintile 1	115	115	155	190	190	155
	Quintile 2	175	175	180	215	185	200
	Quintile 3	165	210	215	255	240	175
	Quintile 4	205	235	240	265	255	210
	Quintile 5	185	250	250	250	215	195
June deadline applicants per 10,000 population	Quintile 1	47.7	52.0	65.1	68.0	69.4	63.0
	Quintile 2	54.2	60.5	69.9	80.6	68.1	60.3
	Quintile 3	57.1	66.0	78.1	78.2	69.6	62.6
	Quintile 4	64.1	73.6	85.1	80.5	73.4	65.2
	Quintile 5	59.4	70.5	80.2	78.3	65.4	57.3
Placed June deadline applicants per 10,000 population	Quintile 1	7.6	6.1	10.0	12.1	12.1	9.4
	Quintile 2	10.5	9.3	10.5	13.0	10.9	11.9
	Quintile 3	9.6	10.3	12.5	14.9	14.4	10.0
	Quintile 4	11.9	11.9	13.8	14.3	14.5	11.9
	Quintile 5	10.3	11.8	13.3	12.6	12.2	10.4
All placed applicants per 10,000 population	Quintile 1	7.9	7.9	10.9	13.8	13.7	11.1
	Quintile 2	11.3	11.6	12.1	14.5	12.6	13.4
	Quintile 3	10.4	13.6	14.1	16.7	15.8	11.5
	Quintile 4	12.9	14.9	15.1	17.0	16.4	13.4
	Quintile 5	11.0	15.2	14.8	15.0	13.3	11.7

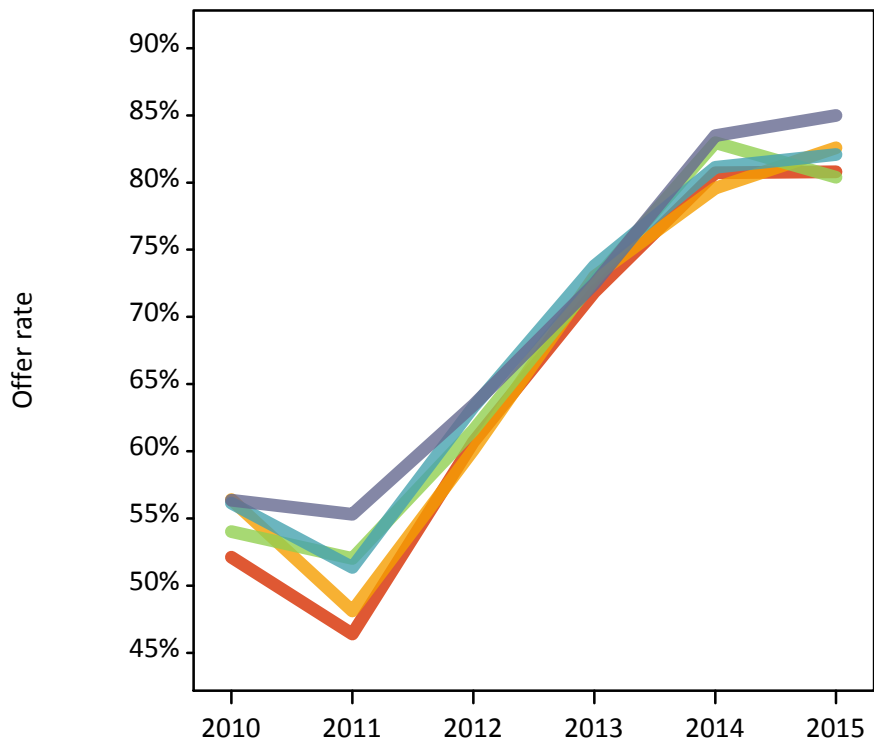
## P.8 18 year old applications by POLAR3 quintile

Statistic	POLAR3 quintile	2010	2011	2012	2013	2014	2015
June deadline applications	Quintile 1	735	780	975	985	1,015	910
	Quintile 2	880	950	1,090	1,250	1,045	925
	Quintile 3	970	1,065	1,260	1,245	1,110	990
	Quintile 4	1,090	1,215	1,395	1,305	1,165	1,050
	Quintile 5	1,040	1,210	1,400	1,330	1,110	985
Offers	Quintile 1	385	360	595	710	820	735
	Quintile 2	495	455	655	910	830	765
	Quintile 3	525	555	775	905	920	795
	Quintile 4	615	625	885	965	945	860
	Quintile 5	585	670	890	965	925	840
Offer rate	Quintile 1	52.1%	46.4%	60.7%	71.8%	80.7%	80.8%
	Quintile 2	56.4%	48.1%	60.1%	73.0%	79.6%	82.6%
	Quintile 3	54.0%	52.0%	61.6%	72.7%	83.0%	80.4%
	Quintile 4	56.1%	51.4%	63.3%	73.8%	81.1%	82.1%
	Quintile 5	56.4%	55.3%	63.4%	72.5%	83.5%	85.0%
Average offer rate	Quintile 1	53.0%	48.5%	61.8%	73.2%	82.2%	81.9%
	Quintile 2	55.3%	49.7%	61.0%	73.1%	81.3%	83.4%
	Quintile 3	55.7%	51.9%	63.0%	73.3%	81.8%	80.2%
	Quintile 4	55.7%	51.4%	63.3%	72.3%	80.1%	81.9%
	Quintile 5	55.6%	52.8%	60.6%	72.3%	82.8%	83.7%
Percentage point difference between offer rate and average offer rate	Quintile 1	-0.9	-2.1	-1.1	-1.3	-1.4	-1.0
	Quintile 2	1.1	-1.6	-0.9	-0.1	-1.7	-0.8
	Quintile 3	-1.7	0.2	-1.4	-0.6	1.2	0.2
	Quintile 4	0.5	-0.0	-0.0	1.5	1.0	0.2
	Quintile 5	0.8	2.5	2.8	0.2	0.7	1.3
Contribution of group to the average offer rate	Quintile 1	0.251	0.238	0.235	0.227	0.272	0.264
	Quintile 2	0.268	0.252	0.235	0.258	0.261	0.260
	Quintile 3	0.284	0.270	0.271	0.251	0.271	0.267
	Quintile 4	0.301	0.295	0.290	0.262	0.282	0.282
	Quintile 5	0.305	0.312	0.296	0.289	0.286	0.284

### P.9 18 year old offer rate by POLAR3 quintile

Note: The line for a group is not plotted when that group made fewer than 10 applications in any of the years from 2010-2015.

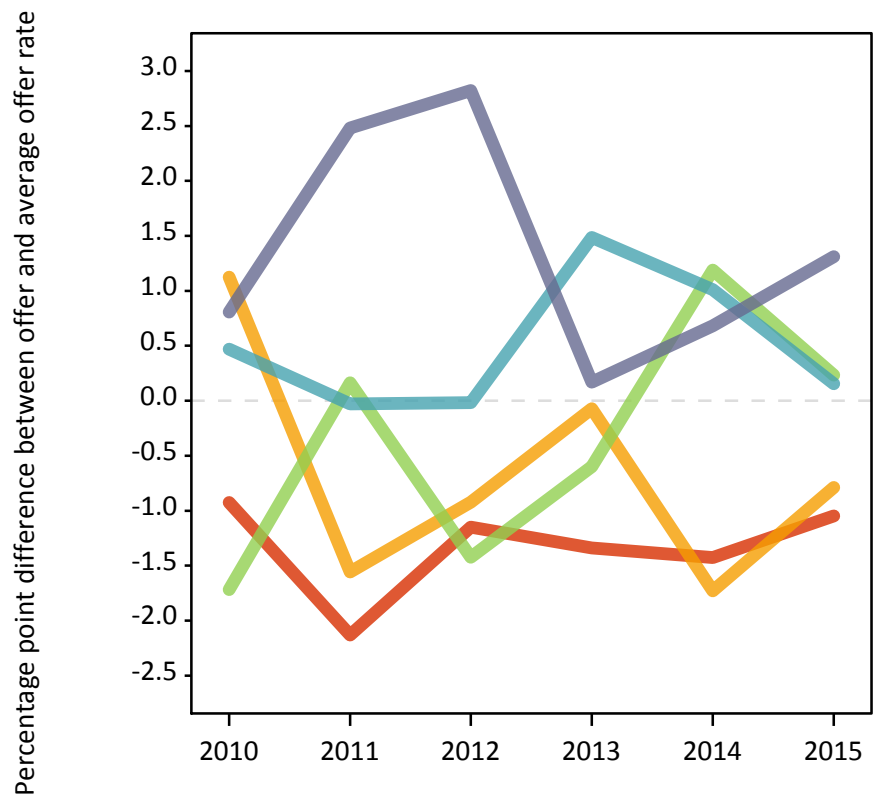
- Quintile 1
- Quintile 2
- Quintile 3
- Quintile 4
- Quintile 5



### P.10 Percentage point difference between 18 year old offer rate and average offer rate by POLAR3 quintile

Note: The line for a group is not plotted when that group made fewer than 50 applications in any of the years from 2010-2015.

- Quintile 1
- Quintile 2
- Quintile 3
- Quintile 4
- Quintile 5



## P.11 18 year old applicants by ethnic group

Statistic	Ethnic group	2010	2011	2012	2013	2014	2015
June deadline applicants	Asian	40	85	125	150	140	135
	Black	20	30	50	55	50	40
	Mixed	55	75	110	105	85	75
	White	4,350	4,790	5,575	5,565	4,930	4,450
	Other	5	5	15	10	5	20
Placed June deadline applicants	Asian	0	5	10	15	10	20
	Black	0	0	5	10	5	5
	Mixed	5	10	15	15	10	10
	White	780	745	905	985	935	790
	Other	0	0	0	0	5	5
All placed applicants	Asian	0	15	15	15	10	20
	Black	0	5	5	10	5	5
	Mixed	10	15	20	20	15	10
	White	835	950	995	1,130	1,045	900
	Other	0	0	0	0	5	5
June deadline applicants per 10,000 population	Asian	6.5	13.3	19.6	22.4	20.6	18.8
	Black	6.9	11.3	17.8	19.2	16.2	12.3
	Mixed	23.3	31.0	42.6	38.8	29.5	24.3
	White	64.9	74.0	86.3	88.4	79.9	71.4
	Other	7.8	8.6	17.0	9.9	7.5	18.7
Placed June deadline applicants per 10,000 population	Asian	0.0	1.1	1.7	2.1	1.8	2.7
	Black	0.0	0.0	1.4	2.7	1.6	0.9
	Mixed	3.0	3.7	5.8	5.2	4.2	2.9
	White	11.6	11.5	14.0	15.6	15.2	12.6
	Other	0.0	0.0	0.0	0.0	3.2	5.2
All placed applicants per 10,000 population	Asian	0.0	2.2	2.5	2.4	1.8	3.0
	Black	0.0	1.1	2.1	3.0	2.0	0.9
	Mixed	3.9	6.2	8.4	7.0	4.5	3.6
	White	12.5	14.6	15.4	17.9	17.0	14.4
	Other	0.0	0.0	0.0	0.0	3.2	6.2



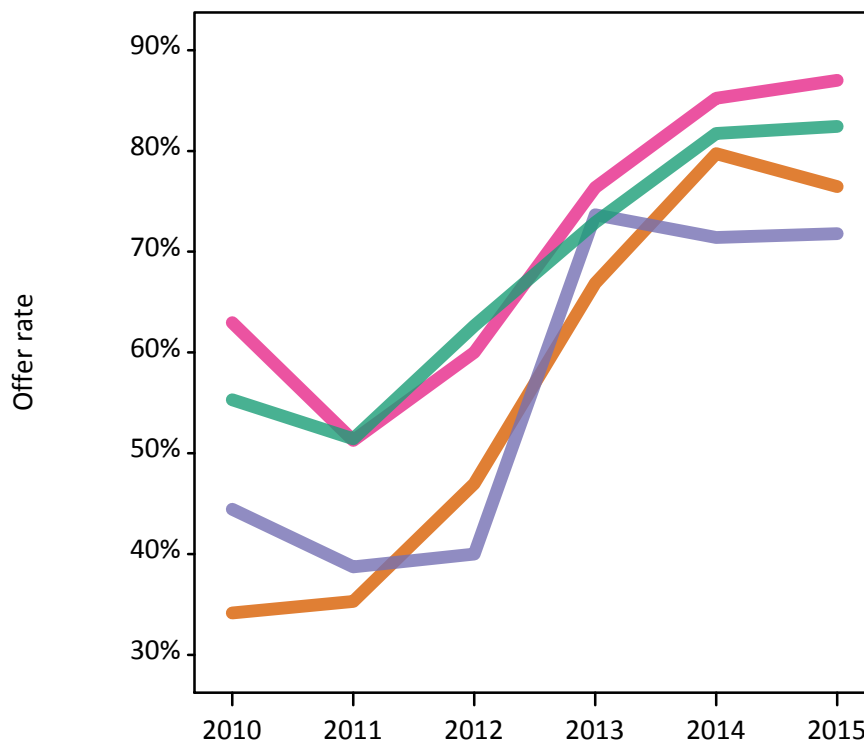
## P.12 18 year old applications by ethnic group

Statistic	Ethnic group	2010	2011	2012	2013	2014	2015
June deadline applications	Asian	40	85	130	155	150	135
	Black	20	30	50	55	50	40
	Mixed	55	80	115	110	90	75
	White	4,590	5,010	5,810	5,785	5,155	4,590
	Other	5	5	15	10	5	20
Offers	Asian	15	30	60	105	120	105
	Black	10	10	20	40	35	30
	Mixed	35	40	70	85	75	65
	White	2,540	2,580	3,640	4,220	4,215	3,780
	Other	0	0	5	5	5	15
Offer rate	Asian	34.1%	35.3%	47.0%	66.9%	79.7%	76.5%
	Black	44.4%	38.7%	40.0%	73.7%	71.4%	71.8%
	Mixed	63.0%	51.3%	60.0%	76.4%	85.2%	87.0%
	White	55.3%	51.4%	62.6%	72.9%	81.7%	82.4%
	Other	N/A	N/A	33.3%	N/A	N/A	73.7%
Average offer rate	Asian	39.9%	41.9%	53.3%	70.9%	83.1%	78.0%
	Black	46.6%	43.8%	56.7%	72.6%	82.1%	78.6%
	Mixed	58.6%	57.9%	60.6%	77.3%	86.3%	88.7%
	White	55.3%	51.2%	62.3%	72.8%	81.5%	82.2%
	Other	N/A	N/A	51.2%	N/A	N/A	83.6%
Percentage point difference between offer rate and average offer rate	Asian	N/A	-6.6	-6.3	-4.0	-3.4	-1.5
	Black	N/A	N/A	-16.7	1.1	N/A	N/A
	Mixed	4.3	-6.6	-0.6	-0.9	-1.1	-1.7
	White	-0.0	0.3	0.4	0.2	0.3	0.2
	Other	N/A	N/A	N/A	N/A	N/A	N/A
Contribution of group to the average offer rate	Asian	0.075	0.155	0.120	0.134	0.111	0.159
	Black	0.176	0.128	0.124	0.097	0.110	0.152
	Mixed	0.113	0.100	0.109	0.072	0.087	0.120
	White	0.975	0.965	0.954	0.950	0.950	0.950
	Other	N/A	N/A	0.075	N/A	N/A	0.075

### P.13 18 year old offer rate by ethnic group

Note: The line for a group is not plotted when that group made fewer than 10 applications in any of the years from 2010-2015.

- Asian
- Black
- Mixed
- White
- Other



### P.14 Percentage point difference between 18 year old offer rate and average offer rate by ethnic group

Note: The line for a group is not plotted when that group made fewer than 50 applications in any of the years from 2010-2015.

- Asian
- Black
- Mixed
- White
- Other



### P.15 Applicants (all ages)

Statistic	2010	2011	2012	2013	2014	2015
June deadline applicants	6,925	7,965	8,895	9,005	8,075	7,315
Placed June deadline applicants	1,185	1,140	1,405	1,555	1,500	1,310
All placed applicants	1,340	1,465	1,605	1,835	1,705	1,540

### P.16 Applications (all ages)

Statistic	2010	2011	2012	2013	2014	2015
June deadline applications	7,415	8,430	9,370	9,420	8,520	7,615
Offers	3,620	3,755	5,300	6,405	6,460	5,750
Offer rate	48.8%	44.6%	56.6%	68.0%	75.8%	75.5%

### P.17 Applicants (all ages) by sex

Statistic	Sex	2010	2011	2012	2013	2014	2015
June deadline applicants	Men	2,340	2,665	3,040	3,150	2,940	2,420
	Women	4,590	5,300	5,855	5,850	5,135	4,895
Placed June deadline applicants	Men	370	360	450	570	485	405
	Women	815	780	955	990	1,015	905
All placed applicants	Men	440	480	510	670	560	485
	Women	905	985	1,095	1,170	1,145	1,055

### P.18 Applications (all ages) by sex

Statistic	Sex	2010	2011	2012	2013	2014	2015
June deadline applications	Men	2,510	2,845	3,210	3,310	3,120	2,535
	Women	4,905	5,585	6,160	6,105	5,400	5,080
Offers	Men	1,245	1,235	1,900	2,435	2,480	1,950
	Women	2,375	2,525	3,400	3,970	3,980	3,805
Offer rate	Men	49.7%	43.4%	59.3%	73.5%	79.5%	76.9%
	Women	48.4%	45.2%	55.2%	65.0%	73.7%	74.9%

### P.19 Applicants (all ages) by POLAR3 quintile

Statistic	POLAR3 quintile	2010	2011	2012	2013	2014	2015
June deadline applicants	Quintile 1	1,165	1,265	1,515	1,550	1,515	1,380
	Quintile 2	1,265	1,475	1,630	1,775	1,540	1,390
	Quintile 3	1,390	1,635	1,820	1,820	1,625	1,455
	Quintile 4	1,535	1,775	1,945	1,910	1,710	1,535
	Quintile 5	1,555	1,805	1,970	1,935	1,675	1,540
Placed June deadline applicants	Quintile 1	180	135	240	270	280	215
	Quintile 2	235	210	255	295	245	270
	Quintile 3	230	250	280	330	325	240
	Quintile 4	275	255	305	325	335	295
	Quintile 5	260	285	320	335	310	280
All placed applicants	Quintile 1	195	175	275	310	315	250
	Quintile 2	260	260	295	345	290	315
	Quintile 3	255	325	320	385	360	290
	Quintile 4	325	330	350	395	380	350
	Quintile 5	300	375	365	395	360	335

### P.20 Applications (all ages) by POLAR3 quintile

Statistic	POLAR3 quintile	2010	2011	2012	2013	2014	2015
June deadline applications	Quintile 1	1,230	1,335	1,605	1,620	1,600	1,435
	Quintile 2	1,365	1,565	1,720	1,870	1,635	1,455
	Quintile 3	1,505	1,745	1,935	1,905	1,725	1,520
	Quintile 4	1,665	1,890	2,035	1,990	1,790	1,600
	Quintile 5	1,630	1,885	2,065	2,020	1,755	1,590
Offers	Quintile 1	555	530	895	1,065	1,190	1,075
	Quintile 2	680	655	965	1,270	1,235	1,095
	Quintile 3	735	790	1,055	1,295	1,320	1,115
	Quintile 4	825	855	1,170	1,375	1,355	1,210
	Quintile 5	815	925	1,210	1,390	1,350	1,240
Offer rate	Quintile 1	45.2%	39.8%	55.6%	65.8%	74.4%	74.9%
	Quintile 2	50.0%	41.9%	56.2%	67.9%	75.5%	75.5%
	Quintile 3	48.8%	45.3%	54.7%	68.0%	76.3%	73.5%
	Quintile 4	49.4%	45.2%	57.4%	69.1%	75.6%	75.6%
	Quintile 5	49.9%	49.0%	58.6%	68.8%	77.0%	77.8%

## P.21 Applicants (all ages) by ethnic group

Statistic	Ethnic group	2010	2011	2012	2013	2014	2015
June deadline applicants	Asian	85	155	210	270	235	230
	Black	80	85	140	145	120	105
	Mixed	95	135	195	180	175	130
	White	6,625	7,555	8,305	8,375	7,500	6,800
	Other	10	15	35	20	25	25
Placed June deadline applicants	Asian	5	15	20	30	20	25
	Black	10	5	15	15	15	5
	Mixed	10	15	25	25	20	20
	White	1,155	1,095	1,345	1,485	1,440	1,255
	Other	0	0	0	0	5	5
All placed applicants	Asian	10	25	25	40	20	30
	Black	10	10	25	15	15	10
	Mixed	15	25	30	30	25	25
	White	1,300	1,400	1,520	1,740	1,630	1,470
	Other	0	0	0	0	5	5

## P.22 Applications (all ages) by ethnic group

Statistic	Ethnic group	2010	2011	2012	2013	2014	2015
June deadline applications	Asian	90	160	220	275	245	235
	Black	80	90	145	145	120	105
	Mixed	100	140	205	190	185	135
	White	7,105	8,005	8,750	8,770	7,920	7,090
	Other	15	15	35	20	25	25
Offers	Asian	35	60	95	165	170	155
	Black	25	20	50	75	75	50
	Mixed	55	65	115	135	150	105
	White	3,485	3,605	5,025	6,005	6,045	5,410
	Other	0	0	10	10	15	20
Offer rate	Asian	37.8%	37.0%	42.3%	59.2%	69.1%	65.4%
	Black	31.6%	24.2%	32.7%	53.5%	62.0%	46.7%
	Mixed	55.1%	45.1%	55.6%	70.7%	80.0%	77.8%
	White	49.1%	45.0%	57.4%	68.5%	76.3%	76.3%
	Other	0.0%	0.0%	30.6%	57.1%	50.0%	66.7%

## Technical Notes and Definitions

### UCAS undergraduate scheme

#### Adjustment

Adjustment allows applicants who have met and exceeded the terms of their conditional firm offer to seek and find a place at another provider whilst keeping their place at their original firm choice provider.

#### Clearing

Clearing is a route for applicants that are not placed and holding no offers to find a place on courses with vacancies.

#### Cycle year

The UCAS application cycle which runs from September to October the following year. For example the 2015 cycle runs from September 2014 through to October 2015.

#### End of cycle

The point in the cycle to which the numbers in this report refer, and the point at which the cycle is closed such that no more applications or offers can be made, and no more applicants can be placed. Numbers reported at the end of cycle exclude information on a small number of applicants who cancelled during the cycle.

#### Extra

Applicants who are unsuccessful in obtaining an offer or decline all offers may be eligible to apply through Extra, where they can apply to one further course at a time. Extra operates from 25 February until early July. It provides applicants who are eligible the possibility of obtaining an offer before exam results are published and Clearing starts.

#### June 30 deadline

The deadline for main scheme applications. Applicants who apply after this date will go directly into Clearing.

#### Record of Prior Acceptance (RPA)

RPA is an acceptance route used when a provider informs UCAS of applicants it has accepted outside of the normal application process (e.g. individuals who have applied directly to the provider).

### Reporting groups

#### Ethnic group

High level grouping of ethnic origin as declared by the applicant: 'White', 'Black', 'Asian', 'Mixed', 'Other', 'Unknown'. Applicants who declare themselves as 'Unknown' ethnic origin are not reported in these tables, but are included in the associated csv data file.

#### POLAR3 quintile

Developed by HEFCE, POLAR3 classifies small areas across the UK into five groups according to their level of young participation in Higher Education. Each of these groups represents around 20 per cent of young people and is ranked from Quintile 1 (areas with the lowest young participation rates, considered as the most disadvantaged) to Quintile 5 (highest young participation rates, considered most advantaged). POLAR3 is based on the participation rates of young people between 2005 and 2009 who entered Higher Education between 2005-06 and 2010-11, therefore is most suitable for applicants aged 19 and under. These groups are assigned using the postcode declared by the applicant at the time of their application. If a UK postcode is invalid, considered unsafe for measurement or there is no link to Census geography possible then the applicant is not assigned to a quintile. Applicants with no POLAR3 quintile are not reported.

#### Sex

Sex as declared by the applicant.

### **SIMD quintile**

Scottish index of multiple deprivation (SIMD) for 2012 identifies small area concentrations of multiple deprivation across all of Scotland, providing a relative measure of deprivation amongst 6505 small areas (data zones) based on 7 socio-economic domains. These small areas are classified into five groups ranked from Quintile 1 (considered the most deprived) to Quintile 5 (considered least deprived), with equal populations in each quintile. Quintiles are assigned using the postcode declared by the applicant, applicants declaring invalid postcodes are classified as 'Not assigned' and are not reported.

SIMD is only defined for applicants domiciled in Scotland, therefore any applicants domiciled outside of Scotland cannot be assigned to an SIMD quintile and so are not reported for this measure.

SIMD is only reported for providers in Scotland. Application and entry rates by SIMD are reported in the 2015 End of Cycle Report and the 2016 cycle January deadline application rate report.

### **Statistics reported in the tables**

#### **All placed applicants**

The number of applicants placed for entry into higher education at the provider through one of their choices, including any choices made through Extra, or via Adjustment, Clearing or RPA.

#### **All placed applicants per 10,000 population**

The number of total UK domiciled 18 year old placed applicants for entry into higher education at the provider divided by the number of UK 18 year olds in the population, multiplied by 10,000. This gives the number of 18 year olds, for every 10,000 in the population, that were placed at the provider through one of their choices, including any choices made through Extra, or via Adjustment, Clearing or RPA. It is an alternative way of expressing the entry rate to a provider. By referencing the underlying population this statistic shows how the number of placed applicants is changing in relation to the available pool of potential applicants and so gives the chance that somebody from the group will be placed at a provider.

This statistic is only reported for 18 year olds.

#### **Average offer rate**

The offer rate that you might expect if the predicted grades and subject choice of applicants were the only factors that influenced whether an applicant was made an offer by the provider. The average offer rate is calculated by dividing applicants according to their specific combination of grades (for A levels the best three predicted grades are used, for BTECs, International Baccalaureate and Scottish Highers and Advanced Highers, predicted grades along with any grades already achieved upon applying are used) and subject choice. For each combination the number of main scheme offers is divided by the number of main scheme applications, to give an overall offer rate. This is then multiplied by the number of applications made by the group for which the average offer rate is being calculated (for example POLAR3 quintile 1), to give an average number of offers for that group. These average number of offers are then added together across all combinations of predicted grade and subject and divided by the number of main scheme applications from the group to give the average offer rate.

The average offer rate does not attempt to control for any other factors that may play a part in the decision to make an offer, such as the subject of the qualifications studied, their relevance to a course, or the grade in each subject; higher numbers of A levels being studied; the exact profile of grades predicted; personal statements; teacher references; interviews; or any other criteria (such as work experience or portfolios) that may be part of the admissions decision.

This statistic is only reported for 18 year olds.



### Contribution of group to the average offer rate

The way in which the average offer rate is defined means that the pattern of application and offers of a group (for example POLAR3 quintile 1) will always contribute, in part, to the average offer rate for that group. When this contribution is large, the average offer rate will mainly reflect the patterns for the group, meaning that the value of the average offer rate will be similar to the offer rate, the percentage point difference statistic will be small, and any real difference between the offer rate and what might be expected given the predicted grades and subject choices of the applicants will be difficult to detect.

Values of the contribution of group to the average offer rate range between 0 and 1. The closer the value is to 1 the greater the contribution a group makes to its own average offer rate.

This statistic is only reported for 18 year olds.

### Placed June deadline applicants

An applicant who has been placed for entry into higher education at the provider through a June deadline application.

### Placed June deadline applicants per 10,000 population

The number of UK domiciled 18 year old placed June deadline applicants at the provider divided by the number of UK 18 year olds in the population, multiplied by 10,000. This gives the number of 18 year olds, for every 10,000 in the population, that were placed at the provider through one of their June deadline applications. It is an alternative way of expressing the entry rate to a provider, but for placed June deadline applicants only. By referencing the underlying population this statistic shows how the number of placed June deadline applicants is changing in relation to the available pool of potential 18 year old applicants and so gives the chance that somebody from the group will be placed at a provider through a June deadline application.

This statistic is only reported for 18 year olds.

### June deadline applications

An application (or choice) to a course in higher education to the provider that is made by the June 30 deadline. Each applicant can make up to five choices this way. The number of June deadline applications does not include choices made through the following routes: Clearing, Extra, Adjustment and RPAs. Applications made to October deadline courses received after the October deadline are not included in these statistics.

### June deadline applicants

The number of applicants that made at least one application to the provider by the June 30 deadline.

### June deadline applicants per 10,000 population

The number of UK domiciled 18 year old June deadline applicants to the provider divided by the number of UK 18 year olds in the population, multiplied by 10,000. This gives the number of 18 year olds, for every 10,000 in the population, who applied by the June 30 deadline. It is equivalent to the application rate. By referencing the underlying population this statistic shows how the number of June deadline applicants is changing in relation to the available pool of potential 18 year old applicants and so gives the chance that somebody from the group will apply to a provider by the June 30 deadline.

This statistic is only reported for 18 year olds.

### Offers

An offer is defined as a provider's decision in response to an application to offer a place to an applicant, often subject to the applicant satisfying academic and/or other criteria, via a June deadline application (i.e. does not cover choices made through the following routes: Clearing, Extra, Adjustment and RPAs).

### Offer rate

The number of offers made divided by the number of June deadline applications. This gives the proportion of all June deadline applications to the provider that received an offer.

### Percentage point difference between offer rate and average offer rate

The offer rate minus the average offer rate.

The percentage point difference can be compared to the expected range of statistical variation resulting from the calculation of the average offer rate using the Average Offer Rate Lookup Table. Where the value of the percentage point difference lies outside of this range, the percentage point difference may be considered to represent a real difference between the offer rate and the average offer rate.

### Other definitions

#### Age

This analysis uses country-specific age definitions that align with the cut off points for school and college cohorts within the different administrations of the UK. For England and Wales, ages are defined on the 31 August, for Northern Ireland on the 1 July and for Scotland on the 28 February the following year. Defining ages in this way matches the assignment of children to school cohorts. For applicants outside of the UK a cohort cut off of 31 August has been used.

#### Provider

A higher education provider - a university or college.

#### UK domiciled

Declared area of permanent residence within England, Northern Ireland, Scotland and Wales. Applicants from the Channel Islands and Isle of Man are not included.