

## W80 University of Worcester

**Cycle years:** 2010 - 2015

**Cycle Reference Point:** End of Cycle

**Applicant coverage:** UK domiciled

**Reporting groups:** Sex, POLAR3, ethnic group

**Applicant statistics:** June deadline applicants, placed June deadline applicants, all placed applicants, June deadline applicants per 10,000 population, placed June deadline applicants per 10,000 population, all placed applicants per 10,000 population

**Application statistics:** June deadline applications, offers, offer rate, average offer rate, percentage point difference between offer rate and average offer rate, contribution of group to the average offer rate

**Non-disclosure controls:** To avoid the disclosure of information about any individual the following measures are taken

- Applicants, placed applicants, applications and offers are rounded to the nearest 5.
- Applicants/placed applicants per 10,000 population figures are reported as 0 if the applicant/placed applicant figures are rounded to 0.
- All statistics related to the offer rate are not reported when the number of applications for a group is less than 10. The percentage point difference between the offer rate and the average offer rate is not reported when the number of applications for a group is less than 50.
- Offer rates are reported as 0% if there are fewer than 5 offers, and 100% if the number of offers is within 5 of the number of applications. When the offer rate is reported as 0% or 100%, it is reported in italics.

### Contents:

18 year old applicants:	P.1
18 year old applications:	P.2
18 year old applicants by sex:	P.3
18 year old applications by sex:	P.4
18 year old applicants by POLAR3 quintile:	P.7
18 year old applications by POLAR3 quintile:	P.8
18 year old applicants by ethnic group:	P.11
18 year old applications by ethnic group:	P.12
Applicants (all ages):	P.15
Applications (all ages):	P.16
Applicants (all ages) by sex:	P.17
Applications (all ages) by sex:	P.18
Applicants (all ages) by POLAR3 quintile:	P.19
Applications (all ages) by POLAR3 quintile:	P.20
Applicants (all ages) by ethnic group:	P.21
Applications (all ages) by ethnic group:	P.22

## P.1 18 year old applicants

Statistic	2010	2011	2012	2013	2014	2015
June deadline applicants	5,345	5,870	6,100	6,015	5,465	6,015
Placed June deadline applicants	855	1,080	1,065	1,050	925	1,210
All placed applicants	1,020	1,255	1,220	1,155	1,060	1,330
June deadline applicants per 10,000 population	67.7	76.2	78.8	79.1	72.6	78.5
Placed June deadline applicants per 10,000	10.9	14.0	13.8	13.8	12.3	15.8
All placed applicants per 10,000 population	12.9	16.3	15.8	15.2	14.1	17.3

## P.2 18 year old applications

Statistic	2010	2011	2012	2013	2014	2015
June deadline applications	5,770	6,275	6,500	6,420	5,860	6,525
Offers	3,980	4,235	4,350	4,545	3,905	4,760
Offer rate	69.0%	67.4%	67.0%	70.8%	66.7%	73.0%

### P.3 18 year old applicants by sex

Statistic	Sex	2010	2011	2012	2013	2014	2015
June deadline applicants	Men	2,290	2,405	2,400	2,340	2,265	2,335
	Women	3,055	3,465	3,700	3,675	3,200	3,685
Placed June deadline applicants	Men	375	445	450	455	445	515
	Women	480	635	610	595	475	690
All placed applicants	Men	445	500	510	500	495	560
	Women	575	755	710	655	570	770
June deadline applicants per 10,000 population	Men	57.1	61.1	60.5	60.0	58.5	59.5
	Women	78.7	92.0	98.2	99.2	87.4	98.6
Placed June deadline applicants per 10,000 population	Men	9.3	11.3	11.4	11.6	11.5	13.1
	Women	12.4	16.9	16.2	16.1	13.0	18.5
All placed applicants per 10,000 population	Men	11.1	12.7	12.8	12.8	12.8	14.2
	Women	14.8	20.0	18.8	17.7	15.5	20.6

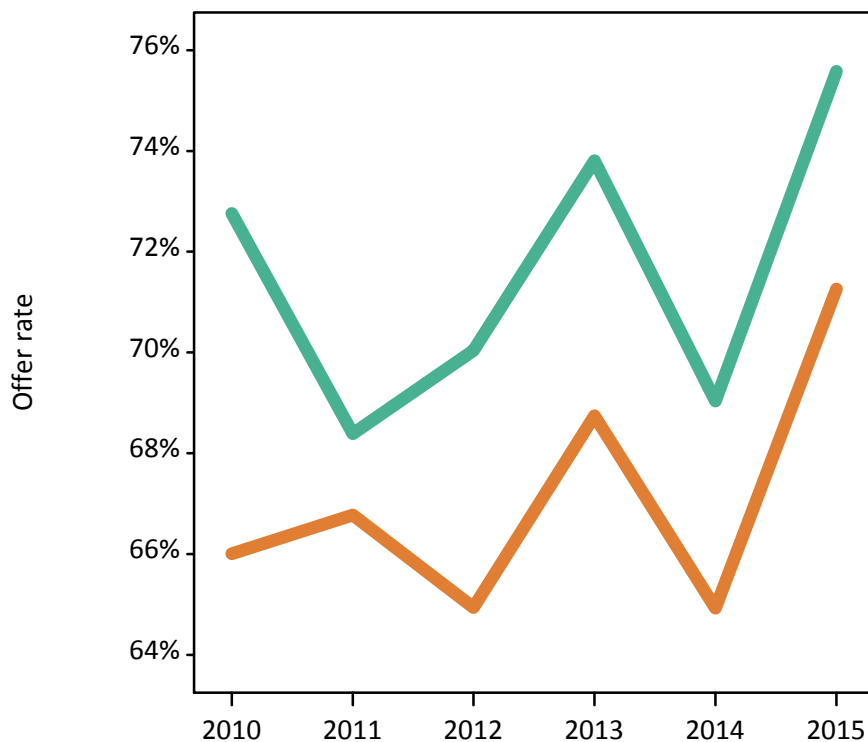
### P.4 18 year old applications by sex

Statistic	Sex	2010	2011	2012	2013	2014	2015
June deadline applications	Men	2,530	2,610	2,580	2,575	2,495	2,615
	Women	3,240	3,665	3,920	3,850	3,365	3,905
Offers	Men	1,840	1,785	1,805	1,900	1,720	1,980
	Women	2,140	2,450	2,545	2,645	2,185	2,785
Offer rate	Men	72.8%	68.4%	70.0%	73.8%	69.0%	75.6%
	Women	66.0%	66.8%	64.9%	68.7%	64.9%	71.3%
Average offer rate	Men	74.1%	70.5%	71.2%	74.8%	70.6%	77.2%
	Women	65.0%	65.3%	64.2%	68.1%	63.8%	70.2%
Percentage point difference between offer rate and average offer rate	Men	-1.3	-2.1	-1.1	-1.0	-1.6	-1.6
	Women	1.0	1.5	0.8	0.7	1.2	1.1
Contribution of group to the average offer rate	Men	0.644	0.606	0.602	0.619	0.639	0.614
	Women	0.722	0.719	0.738	0.745	0.733	0.741

### P.5 18 year old offer rate by sex

Note: The line for a group is not plotted when that group made fewer than 10 applications in any of the years from 2010-2015.

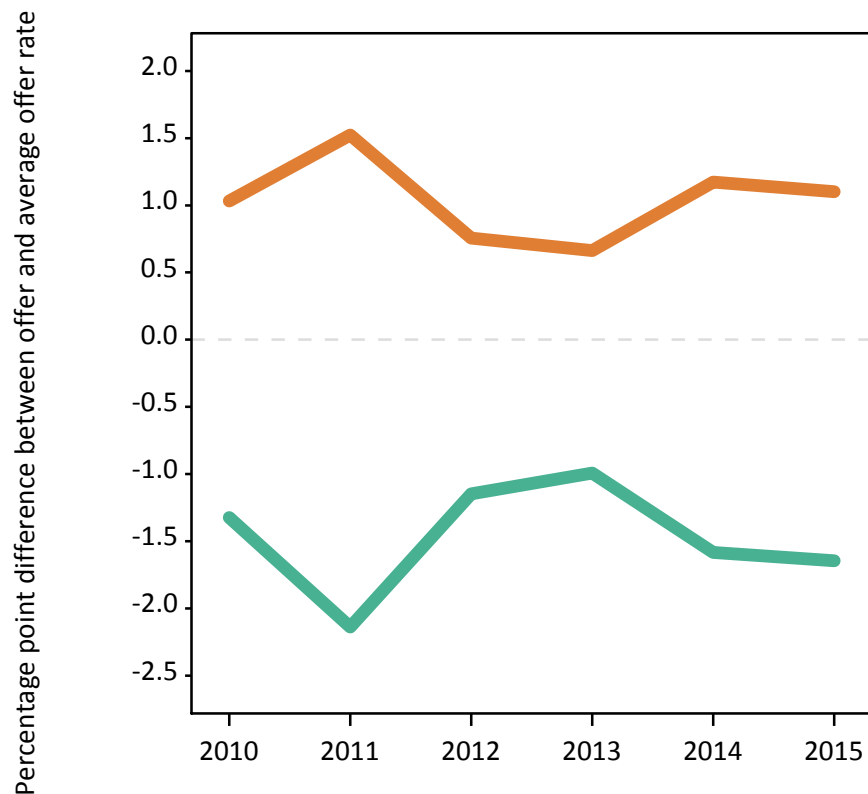
Men  
Women



### P.6 Percentage point difference between 18 year old offer rate and average offer rate by sex

Note: The line for a group is not plotted when that group made fewer than 50 applications in any of the years from 2010-2015.

Men  
Women



## P.7 18 year old applicants by POLAR3 quintile

Statistic	POLAR3 quintile	2010	2011	2012	2013	2014	2015
June deadline applicants	Quintile 1	705	795	830	890	845	1,015
	Quintile 2	1,030	1,085	1,145	1,185	1,095	1,240
	Quintile 3	1,225	1,315	1,395	1,335	1,265	1,320
	Quintile 4	1,175	1,340	1,355	1,275	1,145	1,245
	Quintile 5	1,205	1,330	1,370	1,325	1,110	1,180
Placed June deadline applicants	Quintile 1	105	155	160	160	165	210
	Quintile 2	170	195	190	190	165	225
	Quintile 3	195	260	255	250	230	280
	Quintile 4	180	240	215	210	190	230
	Quintile 5	205	235	245	235	175	260
All placed applicants	Quintile 1	130	180	185	175	185	240
	Quintile 2	190	230	215	210	195	240
	Quintile 3	230	290	290	270	265	300
	Quintile 4	220	280	250	245	225	260
	Quintile 5	250	270	275	250	190	285
June deadline applicants per 10,000 population	Quintile 1	47.6	55.3	58.1	64.0	60.9	72.4
	Quintile 2	67.1	72.0	76.3	80.5	74.8	83.3
	Quintile 3	76.9	85.4	90.3	87.5	84.1	86.1
	Quintile 4	73.9	85.6	85.5	81.4	74.2	79.7
	Quintile 5	71.0	80.5	81.5	80.2	67.9	70.4
Placed June deadline applicants per 10,000 population	Quintile 1	7.1	10.6	11.1	11.6	11.7	15.1
	Quintile 2	11.1	13.0	12.8	12.9	11.2	15.1
	Quintile 3	12.3	16.8	16.5	16.4	15.3	18.2
	Quintile 4	11.2	15.3	13.5	13.6	12.3	14.7
	Quintile 5	12.2	14.1	14.5	14.2	10.8	15.5
All placed applicants per 10,000 population	Quintile 1	8.6	12.5	13.1	12.7	13.2	17.3
	Quintile 2	12.3	15.2	14.3	14.3	13.3	16.2
	Quintile 3	14.6	19.0	18.8	17.8	17.7	19.4
	Quintile 4	13.8	18.0	15.7	15.7	14.5	16.6
	Quintile 5	14.6	16.4	16.5	15.1	11.8	17.1

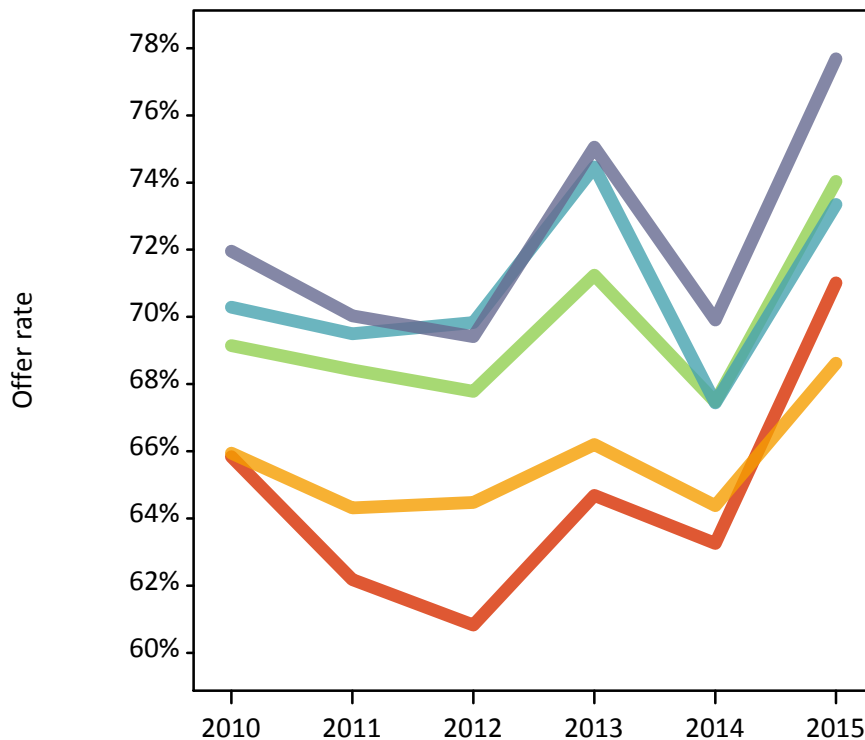
## P.8 18 year old applications by POLAR3 quintile

Statistic	POLAR3 quintile	2010	2011	2012	2013	2014	2015
June deadline applications	Quintile 1	765	855	920	960	920	1,130
	Quintile 2	1,105	1,175	1,215	1,280	1,180	1,330
	Quintile 3	1,330	1,410	1,490	1,430	1,370	1,450
	Quintile 4	1,280	1,425	1,420	1,345	1,210	1,330
	Quintile 5	1,280	1,410	1,445	1,405	1,175	1,270
Offers	Quintile 1	505	530	560	620	580	800
	Quintile 2	730	755	785	845	760	915
	Quintile 3	920	965	1,010	1,020	925	1,070
	Quintile 4	900	990	995	1,005	815	975
	Quintile 5	920	985	1,005	1,055	820	985
Offer rate	Quintile 1	65.8%	62.2%	60.8%	64.7%	63.3%	71.0%
	Quintile 2	65.9%	64.3%	64.5%	66.2%	64.4%	68.6%
	Quintile 3	69.1%	68.4%	67.8%	71.2%	67.5%	74.0%
	Quintile 4	70.3%	69.5%	69.8%	74.5%	67.4%	73.3%
	Quintile 5	72.0%	70.0%	69.4%	75.1%	69.9%	77.7%
Average offer rate	Quintile 1	66.7%	63.8%	64.9%	66.5%	65.3%	71.5%
	Quintile 2	67.5%	65.3%	63.6%	67.1%	65.6%	69.9%
	Quintile 3	68.6%	68.3%	67.2%	70.7%	66.6%	73.6%
	Quintile 4	70.0%	68.8%	68.7%	73.8%	67.1%	74.0%
	Quintile 5	71.0%	68.9%	69.3%	74.1%	68.4%	75.8%
Percentage point difference between offer rate and average offer rate	Quintile 1	-0.9	-1.6	-4.1	-1.8	-2.0	-0.5
	Quintile 2	-1.5	-1.0	0.9	-0.9	-1.2	-1.2
	Quintile 3	0.6	0.1	0.6	0.5	0.8	0.4
	Quintile 4	0.3	0.7	1.2	0.7	0.3	-0.6
	Quintile 5	1.0	1.1	0.1	0.9	1.5	1.9
Contribution of group to the average offer rate	Quintile 1	0.221	0.229	0.243	0.246	0.253	0.256
	Quintile 2	0.273	0.273	0.270	0.283	0.291	0.292
	Quintile 3	0.308	0.300	0.299	0.303	0.310	0.302
	Quintile 4	0.300	0.310	0.298	0.302	0.297	0.298
	Quintile 5	0.309	0.309	0.312	0.315	0.309	0.299

### P.9 18 year old offer rate by POLAR3 quintile

Note: The line for a group is not plotted when that group made fewer than 10 applications in any of the years from 2010-2015.

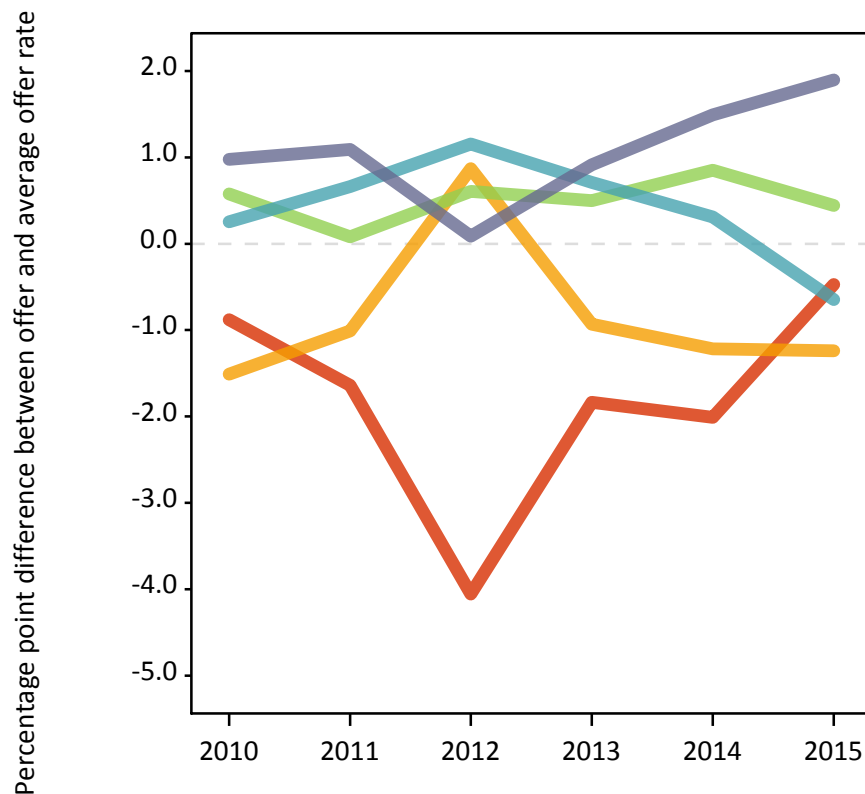
- Quintile 1
- Quintile 2
- Quintile 3
- Quintile 4
- Quintile 5



### P.10 Percentage point difference between 18 year old offer rate and average offer rate by POLAR3 quintile

Note: The line for a group is not plotted when that group made fewer than 50 applications in any of the years from 2010-2015.

- Quintile 1
- Quintile 2
- Quintile 3
- Quintile 4
- Quintile 5



## P.11 18 year old applicants by ethnic group

Statistic	Ethnic group	2010	2011	2012	2013	2014	2015
June deadline applicants	Asian	195	270	335	345	365	405
	Black	135	130	175	200	185	255
	Mixed	130	165	195	200	175	225
	White	4,865	5,280	5,360	5,230	4,710	5,085
	Other	15	15	25	30	25	30
Placed June deadline applicants	Asian	20	35	25	30	30	40
	Black	10	15	25	20	20	40
	Mixed	20	30	30	35	35	45
	White	805	995	980	960	835	1,085
	Other	0	0	5	0	0	0
All placed applicants	Asian	25	40	35	35	40	40
	Black	15	20	30	25	25	45
	Mixed	25	40	30	40	40	50
	White	945	1,145	1,115	1,055	955	1,190
	Other	0	5	5	0	0	5
June deadline applicants per 10,000 population	Asian	31.2	42.5	51.9	52.3	53.5	57.0
	Black	51.2	47.2	61.4	66.7	60.4	80.8
	Mixed	56.5	67.3	74.5	74.7	61.2	72.7
	White	72.5	81.6	83.0	83.1	76.4	81.6
	Other	19.5	21.0	27.1	32.0	26.9	31.2
Placed June deadline applicants per 10,000 population	Asian	3.1	5.6	4.2	4.2	4.4	5.5
	Black	4.6	5.1	8.9	6.7	7.3	12.6
	Mixed	8.6	13.2	10.7	12.6	12.5	13.9
	White	12.0	15.3	15.1	15.3	13.5	17.4
	Other	0.0	0.0	3.4	0.0	0.0	0.0
All placed applicants per 10,000 population	Asian	4.4	6.5	5.4	5.3	5.8	5.8
	Black	5.3	6.6	11.0	8.4	8.9	13.5
	Mixed	10.4	16.5	11.9	14.1	13.6	15.6
	White	14.1	17.7	17.3	16.7	15.5	19.1
	Other	0.0	3.7	3.4	0.0	0.0	3.1

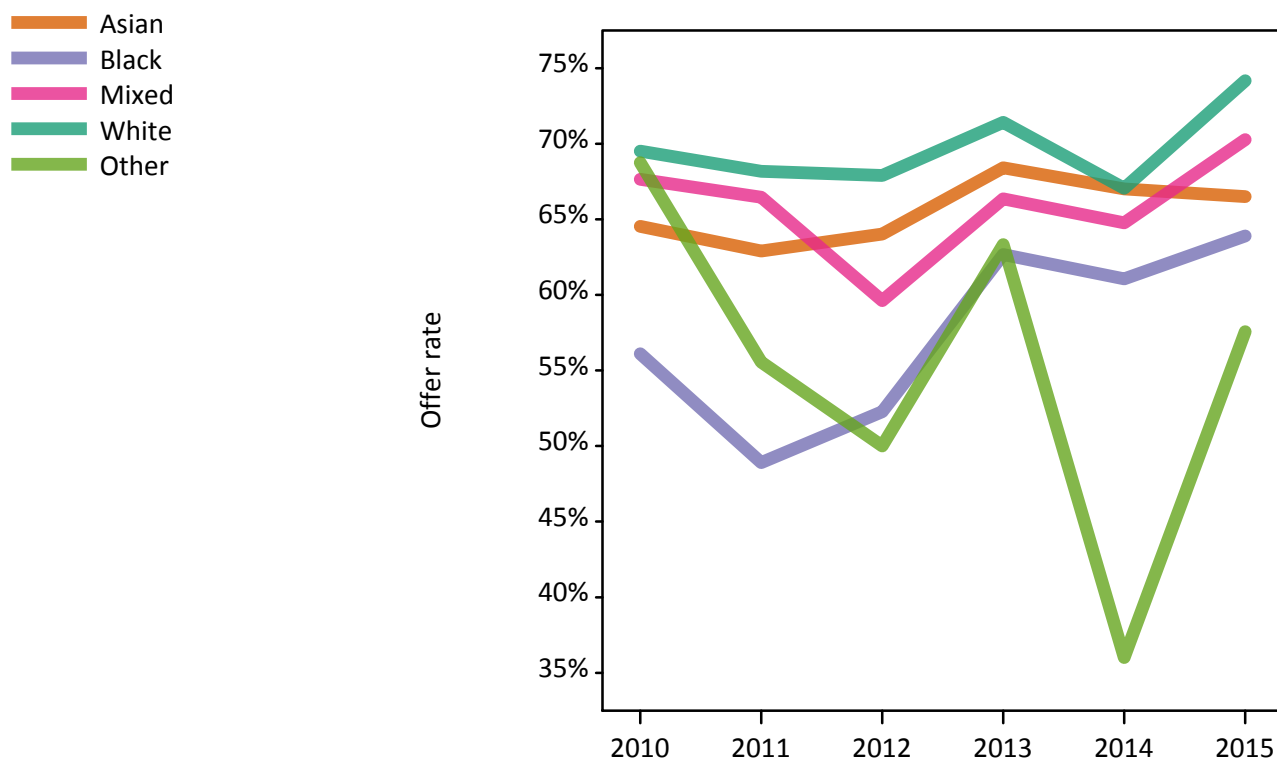


## P.12 18 year old applications by ethnic group

Statistic	Ethnic group	2010	2011	2012	2013	2014	2015
June deadline applications	Asian	205	285	355	360	375	420
	Black	140	135	175	210	190	275
	Mixed	135	170	210	215	195	250
	White	5,270	5,655	5,730	5,595	5,070	5,530
	Other	15	20	25	30	25	35
Offers	Asian	130	180	225	245	250	280
	Black	80	65	90	130	115	175
	Mixed	90	115	125	145	125	175
	White	3,665	3,855	3,890	3,995	3,400	4,100
	Other	10	10	10	20	10	20
Offer rate	Asian	64.5%	62.9%	64.0%	68.4%	67.0%	66.5%
	Black	56.1%	48.9%	52.3%	62.7%	61.1%	63.9%
	Mixed	67.6%	66.5%	59.6%	66.4%	64.8%	70.3%
	White	69.5%	68.2%	67.9%	71.4%	67.0%	74.2%
	Other	68.8%	55.6%	50.0%	63.3%	36.0%	57.6%
Average offer rate	Asian	69.4%	66.4%	67.8%	70.2%	68.3%	70.1%
	Black	64.4%	60.5%	63.4%	63.9%	65.0%	69.5%
	Mixed	70.1%	66.1%	65.2%	67.8%	67.6%	71.3%
	White	69.0%	67.7%	67.0%	71.2%	66.6%	73.5%
	Other	74.7%	66.1%	69.3%	69.7%	52.9%	61.5%
Percentage point difference between offer rate and average offer rate	Asian	-4.9	-3.5	-3.7	-1.8	-1.3	-3.6
	Black	-8.3	-11.6	-11.1	-1.3	-3.9	-5.6
	Mixed	-2.4	0.4	-5.6	-1.5	-2.9	-1.0
	White	0.5	0.5	0.8	0.2	0.4	0.6
	Other	N/A	N/A	N/A	N/A	N/A	N/A
Contribution of group to the average offer rate	Asian	0.159	0.185	0.174	0.191	0.203	0.185
	Black	0.157	0.160	0.137	0.164	0.132	0.155
	Mixed	0.121	0.134	0.132	0.115	0.158	0.135
	White	0.924	0.915	0.897	0.890	0.883	0.867
	Other	0.140	0.076	0.110	0.113	0.072	0.105

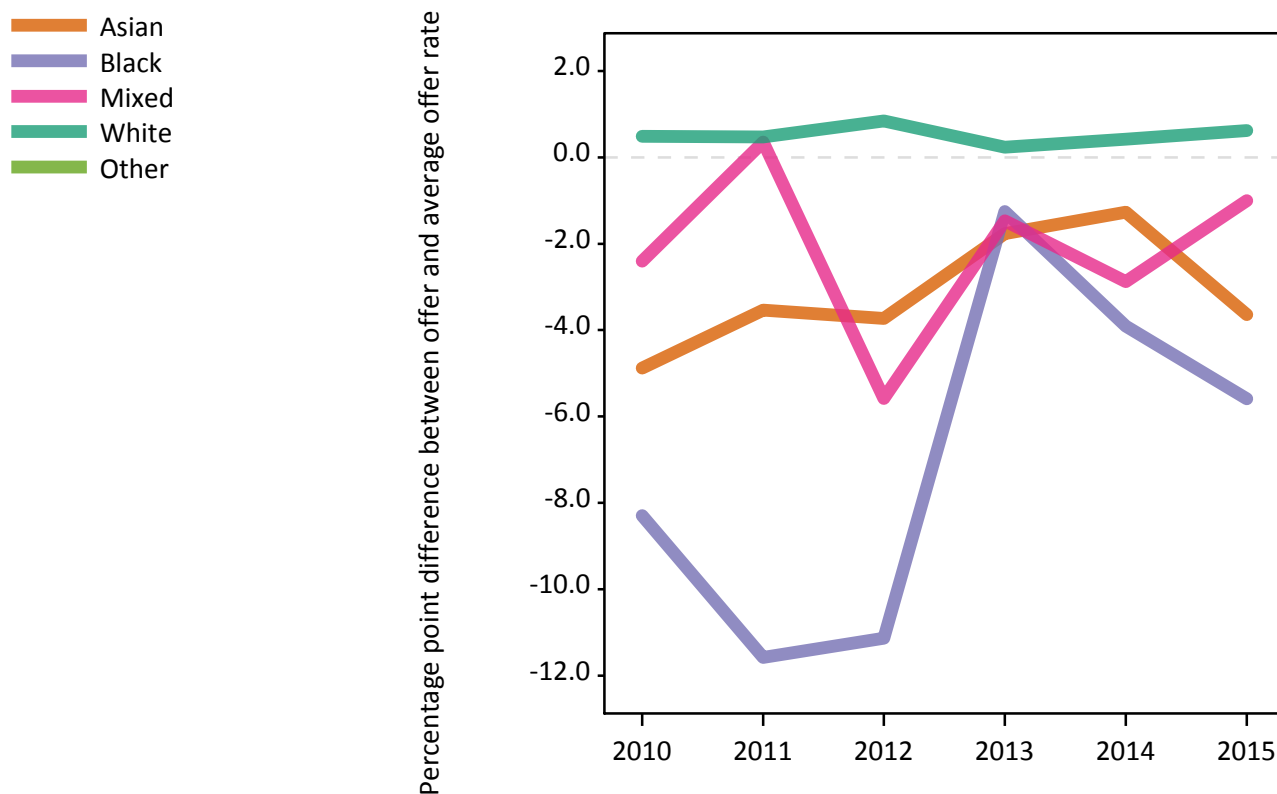
### P.13 18 year old offer rate by ethnic group

Note: The line for a group is not plotted when that group made fewer than 10 applications in any of the years from 2010-2015.



### P.14 Percentage point difference between 18 year old offer rate and average offer rate by ethnic group

Note: The line for a group is not plotted when that group made fewer than 50 applications in any of the years from 2010-2015.



### P.15 Applicants (all ages)

Statistic	2010	2011	2012	2013	2014	2015
June deadline applicants	10,320	11,295	11,300	11,960	11,470	12,125
Placed June deadline applicants	1,950	2,215	2,060	2,320	2,120	2,600
All placed applicants	2,500	2,755	2,565	2,835	2,685	3,075

### P.16 Applications (all ages)

Statistic	2010	2011	2012	2013	2014	2015
June deadline applications	11,340	12,250	12,160	12,890	12,395	13,185
Offers	6,440	6,830	6,685	7,600	6,760	8,045
Offer rate	56.8%	55.7%	55.0%	58.9%	54.5%	61.0%

### P.17 Applicants (all ages) by sex

Statistic	Sex	2010	2011	2012	2013	2014	2015
June deadline applicants	Men	4,195	4,445	4,285	4,350	4,275	4,300
	Women	6,125	6,850	7,015	7,610	7,195	7,825
Placed June deadline applicants	Men	730	830	790	865	835	915
	Women	1,215	1,385	1,270	1,460	1,285	1,685
All placed applicants	Men	935	990	940	1,050	1,005	1,050
	Women	1,565	1,765	1,625	1,790	1,680	2,025

### P.18 Applications (all ages) by sex

Statistic	Sex	2010	2011	2012	2013	2014	2015
June deadline applications	Men	4,690	4,845	4,655	4,820	4,695	4,800
	Women	6,650	7,405	7,505	8,070	7,700	8,390
Offers	Men	2,900	2,820	2,770	3,115	2,825	3,215
	Women	3,540	4,010	3,915	4,485	3,935	4,835
Offer rate	Men	61.9%	58.2%	59.5%	64.6%	60.2%	67.0%
	Women	53.2%	54.1%	52.2%	55.6%	51.1%	57.6%

### P.19 Applicants (all ages) by POLAR3 quintile

Statistic	POLAR3 quintile	2010	2011	2012	2013	2014	2015
June deadline applicants	Quintile 1	1,500	1,730	1,770	1,930	1,980	2,150
	Quintile 2	2,030	2,230	2,295	2,490	2,425	2,600
	Quintile 3	2,345	2,475	2,555	2,690	2,650	2,725
	Quintile 4	2,215	2,460	2,330	2,430	2,235	2,325
	Quintile 5	2,215	2,385	2,340	2,405	2,160	2,290
Placed June deadline applicants	Quintile 1	265	320	320	385	370	445
	Quintile 2	375	445	395	430	400	475
	Quintile 3	415	515	490	555	505	585
	Quintile 4	460	490	420	495	445	530
	Quintile 5	435	440	425	455	395	550
All placed applicants	Quintile 1	355	395	405	465	465	530
	Quintile 2	480	570	510	550	530	585
	Quintile 3	545	625	595	665	630	690
	Quintile 4	595	605	525	615	580	620
	Quintile 5	525	550	520	540	475	635

### P.20 Applications (all ages) by POLAR3 quintile

Statistic	POLAR3 quintile	2010	2011	2012	2013	2014	2015
June deadline applications	Quintile 1	1,655	1,880	1,950	2,105	2,150	2,360
	Quintile 2	2,210	2,450	2,460	2,675	2,600	2,795
	Quintile 3	2,585	2,675	2,760	2,895	2,870	2,965
	Quintile 4	2,450	2,670	2,480	2,630	2,425	2,520
	Quintile 5	2,425	2,560	2,495	2,570	2,330	2,500
Offers	Quintile 1	865	950	935	1,130	1,090	1,360
	Quintile 2	1,170	1,285	1,280	1,430	1,335	1,600
	Quintile 3	1,470	1,525	1,515	1,720	1,600	1,800
	Quintile 4	1,460	1,545	1,460	1,655	1,375	1,600
	Quintile 5	1,465	1,510	1,490	1,660	1,340	1,660
Offer rate	Quintile 1	52.3%	50.4%	48.0%	53.6%	50.7%	57.7%
	Quintile 2	52.9%	52.6%	52.0%	53.4%	51.4%	57.3%
	Quintile 3	57.0%	57.1%	54.8%	59.4%	55.8%	60.6%
	Quintile 4	59.7%	57.9%	58.8%	62.9%	56.8%	63.6%
	Quintile 5	60.5%	58.9%	59.7%	64.5%	57.5%	66.3%

## P.21 Applicants (all ages) by ethnic group

Statistic	Ethnic group	2010	2011	2012	2013	2014	2015
June deadline applicants	Asian	480	620	715	790	800	900
	Black	520	595	655	740	755	910
	Mixed	270	325	395	410	425	505
	White	8,985	9,665	9,435	9,895	9,375	9,665
	Other	35	40	65	70	75	90
Placed June deadline applicants	Asian	50	75	65	65	65	85
	Black	30	50	65	70	75	115
	Mixed	45	65	60	65	60	85
	White	1,820	2,010	1,850	2,100	1,910	2,300
	Other	5	5	5	10	5	10
All placed applicants	Asian	80	100	95	90	90	105
	Black	65	70	90	110	105	150
	Mixed	55	80	75	75	75	100
	White	2,260	2,470	2,280	2,530	2,390	2,695
	Other	5	10	10	15	5	15

## P.22 Applications (all ages) by ethnic group

Statistic	Ethnic group	2010	2011	2012	2013	2014	2015
June deadline applications	Asian	515	655	760	830	830	940
	Black	540	625	675	775	785	955
	Mixed	300	350	420	450	470	560
	White	9,920	10,530	10,200	10,715	10,190	10,580
	Other	35	45	65	75	75	95
Offers	Asian	240	330	385	450	450	540
	Black	150	160	195	300	280	380
	Mixed	160	190	225	245	215	310
	White	5,860	6,105	5,835	6,545	5,770	6,740
	Other	15	20	25	40	25	40
Offer rate	Asian	46.6%	50.2%	50.7%	54.1%	53.9%	57.6%
	Black	27.7%	25.3%	28.5%	38.4%	35.5%	39.9%
	Mixed	53.7%	53.6%	52.8%	54.5%	46.2%	55.5%
	White	59.1%	58.0%	57.2%	61.1%	56.6%	63.7%
	Other	47.1%	48.9%	39.4%	56.2%	32.5%	42.3%

## Technical Notes and Definitions

### UCAS undergraduate scheme

#### Adjustment

Adjustment allows applicants who have met and exceeded the terms of their conditional firm offer to seek and find a place at another provider whilst keeping their place at their original firm choice provider.

#### Clearing

Clearing is a route for applicants that are not placed and holding no offers to find a place on courses with vacancies.

#### Cycle year

The UCAS application cycle which runs from September to October the following year. For example the 2015 cycle runs from September 2014 through to October 2015.

#### End of cycle

The point in the cycle to which the numbers in this report refer, and the point at which the cycle is closed such that no more applications or offers can be made, and no more applicants can be placed. Numbers reported at the end of cycle exclude information on a small number of applicants who cancelled during the cycle.

#### Extra

Applicants who are unsuccessful in obtaining an offer or decline all offers may be eligible to apply through Extra, where they can apply to one further course at a time. Extra operates from 25 February until early July. It provides applicants who are eligible the possibility of obtaining an offer before exam results are published and Clearing starts.

#### June 30 deadline

The deadline for main scheme applications. Applicants who apply after this date will go directly into Clearing.

#### Record of Prior Acceptance (RPA)

RPA is an acceptance route used when a provider informs UCAS of applicants it has accepted outside of the normal application process (e.g. individuals who have applied directly to the provider).

### Reporting groups

#### Ethnic group

High level grouping of ethnic origin as declared by the applicant: 'White', 'Black', 'Asian', 'Mixed', 'Other', 'Unknown'. Applicants who declare themselves as 'Unknown' ethnic origin are not reported in these tables, but are included in the associated csv data file.

#### POLAR3 quintile

Developed by HEFCE, POLAR3 classifies small areas across the UK into five groups according to their level of young participation in Higher Education. Each of these groups represents around 20 per cent of young people and is ranked from Quintile 1 (areas with the lowest young participation rates, considered as the most disadvantaged) to Quintile 5 (highest young participation rates, considered most advantaged). POLAR3 is based on the participation rates of young people between 2005 and 2009 who entered Higher Education between 2005-06 and 2010-11, therefore is most suitable for applicants aged 19 and under. These groups are assigned using the postcode declared by the applicant at the time of their application. If a UK postcode is invalid, considered unsafe for measurement or there is no link to Census geography possible then the applicant is not assigned to a quintile. Applicants with no POLAR3 quintile are not reported.

#### Sex

Sex as declared by the applicant.

### **SIMD quintile**

Scottish index of multiple deprivation (SIMD) for 2012 identifies small area concentrations of multiple deprivation across all of Scotland, providing a relative measure of deprivation amongst 6505 small areas (data zones) based on 7 socio-economic domains. These small areas are classified into five groups ranked from Quintile 1 (considered the most deprived) to Quintile 5 (considered least deprived), with equal populations in each quintile. Quintiles are assigned using the postcode declared by the applicant, applicants declaring invalid postcodes are classified as 'Not assigned' and are not reported.

SIMD is only defined for applicants domiciled in Scotland, therefore any applicants domiciled outside of Scotland cannot be assigned to an SIMD quintile and so are not reported for this measure.

SIMD is only reported for providers in Scotland. Application and entry rates by SIMD are reported in the 2015 End of Cycle Report and the 2016 cycle January deadline application rate report.

### **Statistics reported in the tables**

#### **All placed applicants**

The number of applicants placed for entry into higher education at the provider through one of their choices, including any choices made through Extra, or via Adjustment, Clearing or RPA.

#### **All placed applicants per 10,000 population**

The number of total UK domiciled 18 year old placed applicants for entry into higher education at the provider divided by the number of UK 18 year olds in the population, multiplied by 10,000. This gives the number of 18 year olds, for every 10,000 in the population, that were placed at the provider through one of their choices, including any choices made through Extra, or via Adjustment, Clearing or RPA. It is an alternative way of expressing the entry rate to a provider. By referencing the underlying population this statistic shows how the number of placed applicants is changing in relation to the available pool of potential applicants and so gives the chance that somebody from the group will be placed at a provider.

This statistic is only reported for 18 year olds.

#### **Average offer rate**

The offer rate that you might expect if the predicted grades and subject choice of applicants were the only factors that influenced whether an applicant was made an offer by the provider. The average offer rate is calculated by dividing applicants according to their specific combination of grades (for A levels the best three predicted grades are used, for BTECs, International Baccalaureate and Scottish Highers and Advanced Highers, predicted grades along with any grades already achieved upon applying are used) and subject choice. For each combination the number of main scheme offers is divided by the number of main scheme applications, to give an overall offer rate. This is then multiplied by the number of applications made by the group for which the average offer rate is being calculated (for example POLAR3 quintile 1), to give an average number of offers for that group. These average number of offers are then added together across all combinations of predicted grade and subject and divided by the number of main scheme applications from the group to give the average offer rate.

The average offer rate does not attempt to control for any other factors that may play a part in the decision to make an offer, such as the subject of the qualifications studied, their relevance to a course, or the grade in each subject; higher numbers of A levels being studied; the exact profile of grades predicted; personal statements; teacher references; interviews; or any other criteria (such as work experience or portfolios) that may be part of the admissions decision.

This statistic is only reported for 18 year olds.



### Contribution of group to the average offer rate

The way in which the average offer rate is defined means that the pattern of application and offers of a group (for example POLAR3 quintile 1) will always contribute, in part, to the average offer rate for that group. When this contribution is large, the average offer rate will mainly reflect the patterns for the group, meaning that the value of the average offer rate will be similar to the offer rate, the percentage point difference statistic will be small, and any real difference between the offer rate and what might be expected given the predicted grades and subject choices of the applicants will be difficult to detect.

Values of the contribution of group to the average offer rate range between 0 and 1. The closer the value is to 1 the greater the contribution a group makes to its own average offer rate.

This statistic is only reported for 18 year olds.

### Placed June deadline applicants

An applicant who has been placed for entry into higher education at the provider through a June deadline application.

### Placed June deadline applicants per 10,000 population

The number of UK domiciled 18 year old placed June deadline applicants at the provider divided by the number of UK 18 year olds in the population, multiplied by 10,000. This gives the number of 18 year olds, for every 10,000 in the population, that were placed at the provider through one of their June deadline applications. It is an alternative way of expressing the entry rate to a provider, but for placed June deadline applicants only. By referencing the underlying population this statistic shows how the number of placed June deadline applicants is changing in relation to the available pool of potential 18 year old applicants and so gives the chance that somebody from the group will be placed at a provider through a June deadline application.

This statistic is only reported for 18 year olds.

### June deadline applications

An application (or choice) to a course in higher education to the provider that is made by the June 30 deadline. Each applicant can make up to five choices this way. The number of June deadline applications does not include choices made through the following routes: Clearing, Extra, Adjustment and RPAs. Applications made to October deadline courses received after the October deadline are not included in these statistics.

### June deadline applicants

The number of applicants that made at least one application to the provider by the June 30 deadline.

### June deadline applicants per 10,000 population

The number of UK domiciled 18 year old June deadline applicants to the provider divided by the number of UK 18 year olds in the population, multiplied by 10,000. This gives the number of 18 year olds, for every 10,000 in the population, who applied by the June 30 deadline. It is equivalent to the application rate. By referencing the underlying population this statistic shows how the number of June deadline applicants is changing in relation to the available pool of potential 18 year old applicants and so gives the chance that somebody from the group will apply to a provider by the June 30 deadline.

This statistic is only reported for 18 year olds.

### Offers

An offer is defined as a provider's decision in response to an application to offer a place to an applicant, often subject to the applicant satisfying academic and/or other criteria, via a June deadline application (i.e. does not cover choices made through the following routes: Clearing, Extra, Adjustment and RPAs).

### Offer rate

The number of offers made divided by the number of June deadline applications. This gives the proportion of all June deadline applications to the provider that received an offer.

### Percentage point difference between offer rate and average offer rate

The offer rate minus the average offer rate.

The percentage point difference can be compared to the expected range of statistical variation resulting from the calculation of the average offer rate using the Average Offer Rate Lookup Table. Where the value of the percentage point difference lies outside of this range, the percentage point difference may be considered to represent a real difference between the offer rate and the average offer rate.

### Other definitions

#### Age

This analysis uses country-specific age definitions that align with the cut off points for school and college cohorts within the different administrations of the UK. For England and Wales, ages are defined on the 31 August, for Northern Ireland on the 1 July and for Scotland on the 28 February the following year. Defining ages in this way matches the assignment of children to school cohorts. For applicants outside of the UK a cohort cut off of 31 August has been used.

#### Provider

A higher education provider - a university or college.

#### UK domiciled

Declared area of permanent residence within England, Northern Ireland, Scotland and Wales. Applicants from the Channel Islands and Isle of Man are not included.