

W20 The University of Warwick

Cycle years: 2010 - 2015

Cycle Reference Point: End of Cycle

Applicant coverage: UK domiciled

Reporting groups: Sex, POLAR3, ethnic group

Applicant statistics: June deadline applicants, placed June deadline applicants, all placed applicants, June deadline applicants per 10,000 population, placed June deadline applicants per 10,000 population, all placed applicants per 10,000 population

Application statistics: June deadline applications, offers, offer rate, average offer rate, percentage point difference between offer rate and average offer rate, contribution of group to the average offer rate

Non-disclosure controls: To avoid the disclosure of information about any individual the following measures are taken

- Applicants, placed applicants, applications and offers are rounded to the nearest 5.
- Applicants/placed applicants per 10,000 population figures are reported as 0 if the applicant/placed applicant figures are rounded to 0.
- All statistics related to the offer rate are not reported when the number of applications for a group is less than 10. The percentage point difference between the offer rate and the average offer rate is not reported when the number of applications for a group is less than 50.
- Offer rates are reported as 0% if there are fewer than 5 offers, and 100% if the number of offers is within 5 of the number of applications. When the offer rate is reported as 0% or 100%, it is reported in italics.

Contents:

18 year old applicants:	P.1
18 year old applications:	P.2
18 year old applicants by sex:	P.3
18 year old applications by sex:	P.4
18 year old applicants by POLAR3 quintile:	P.7
18 year old applications by POLAR3 quintile:	P.8
18 year old applicants by ethnic group:	P.11
18 year old applications by ethnic group:	P.12
Applicants (all ages):	P.15
Applications (all ages):	P.16
Applicants (all ages) by sex:	P.17
Applications (all ages) by sex:	P.18
Applicants (all ages) by POLAR3 quintile:	P.19
Applications (all ages) by POLAR3 quintile:	P.20
Applicants (all ages) by ethnic group:	P.21
Applications (all ages) by ethnic group:	P.22

P.1 18 year old applicants

Statistic	2010	2011	2012	2013	2014	2015
June deadline applicants	17,080	14,250	12,780	11,820	12,555	15,700
Placed June deadline applicants	2,240	1,955	1,965	2,060	2,015	2,450
All placed applicants	2,290	1,985	2,080	2,300	2,265	2,595
June deadline applicants per 10,000 population	216.3	185.0	165.2	155.3	166.7	204.9
Placed June deadline applicants per 10,000	28.4	25.4	25.4	27.1	26.8	32.0
All placed applicants per 10,000 population	29.0	25.8	26.9	30.2	30.1	33.8

P.2 18 year old applications

Statistic	2010	2011	2012	2013	2014	2015
June deadline applications	17,325	14,450	12,910	11,945	12,705	15,930
Offers	10,650	9,275	8,690	9,045	10,150	13,425
Offer rate	61.5%	64.2%	67.3%	75.7%	79.9%	84.3%

P.3 18 year old applicants by sex

Statistic	Sex	2010	2011	2012	2013	2014	2015
June deadline applicants	Men	9,160	7,640	6,940	6,375	6,795	8,295
	Women	7,920	6,610	5,840	5,445	5,760	7,405
Placed June deadline applicants	Men	1,270	1,040	1,130	1,150	1,095	1,330
	Women	970	915	840	910	920	1,120
All placed applicants	Men	1,300	1,055	1,180	1,270	1,220	1,395
	Women	990	930	900	1,030	1,040	1,200
June deadline applicants per 10,000 population	Men	228.1	194.1	175.0	163.3	175.5	211.4
	Women	204.2	175.5	154.9	146.9	157.4	198.1
Placed June deadline applicants per 10,000 population	Men	31.7	26.5	28.4	29.4	28.3	33.9
	Women	25.0	24.3	22.2	24.6	25.2	29.9
All placed applicants per 10,000 population	Men	32.4	26.9	29.7	32.5	31.6	35.5
	Women	25.5	24.6	23.9	27.8	28.5	32.1

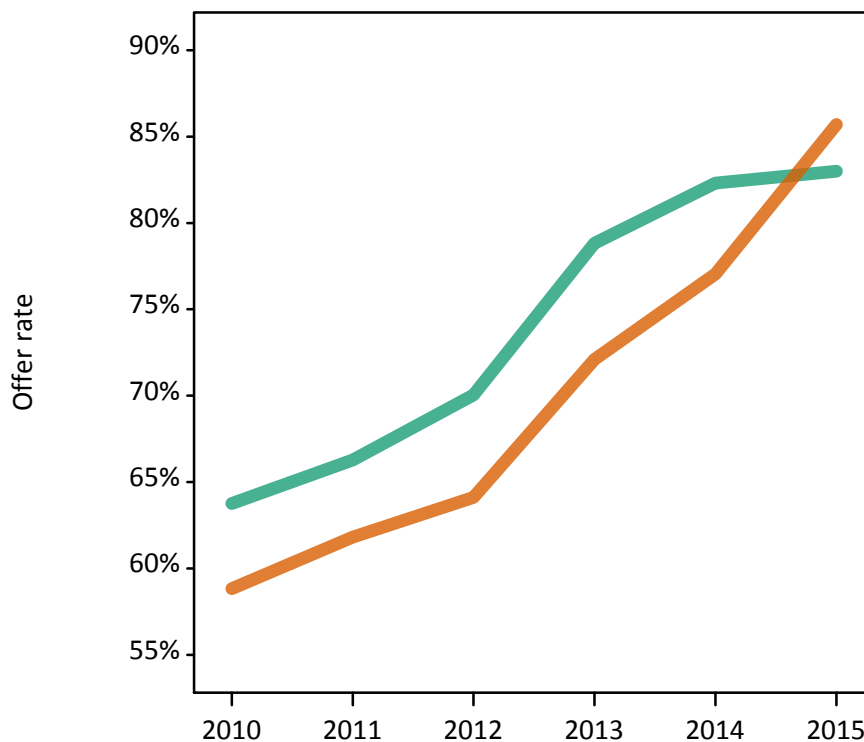
P.4 18 year old applications by sex

Statistic	Sex	2010	2011	2012	2013	2014	2015
June deadline applications	Men	9,290	7,740	7,010	6,445	6,875	8,425
	Women	8,035	6,710	5,900	5,500	5,830	7,505
Offers	Men	5,925	5,130	4,910	5,080	5,660	6,990
	Women	4,725	4,145	3,780	3,965	4,490	6,435
Offer rate	Men	63.8%	66.3%	70.0%	78.8%	82.3%	83.0%
	Women	58.8%	61.8%	64.1%	72.1%	77.0%	85.7%
Average offer rate	Men	64.2%	66.7%	70.3%	79.0%	82.4%	83.7%
	Women	58.3%	61.4%	63.8%	71.9%	77.0%	84.9%
Percentage point difference between offer rate and average offer rate	Men	-0.4	-0.4	-0.3	-0.2	-0.1	-0.7
	Women	0.5	0.5	0.3	0.2	0.1	0.8
Contribution of group to the average offer rate	Men	0.640	0.641	0.655	0.651	0.649	0.643
	Women	0.584	0.586	0.590	0.591	0.586	0.599

P.5 18 year old offer rate by sex

Note: The line for a group is not plotted when that group made fewer than 10 applications in any of the years from 2010-2015.

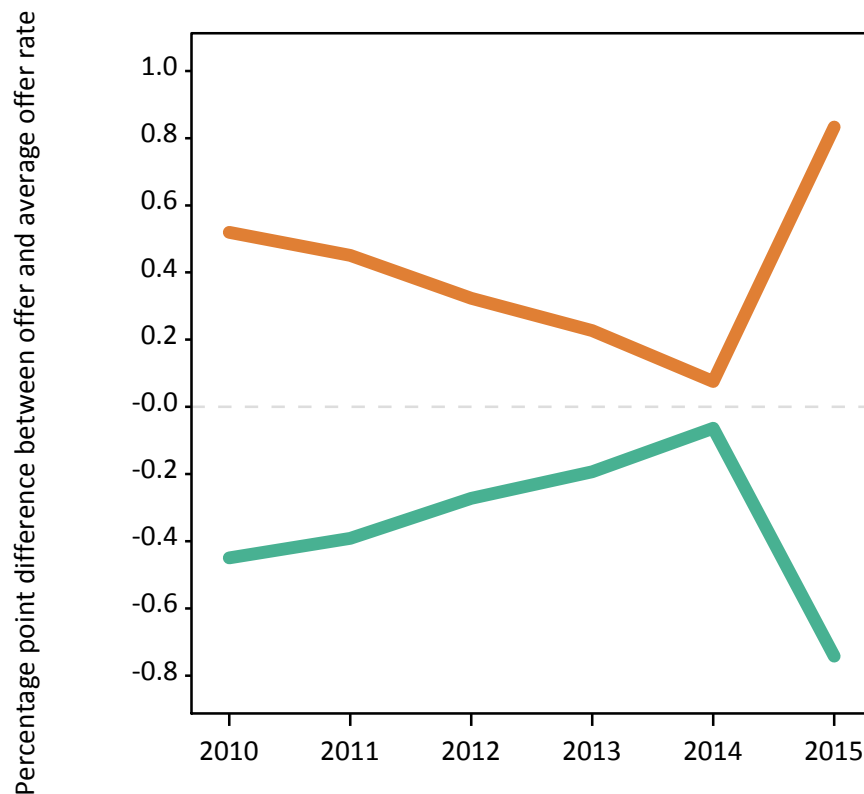
Men
Women



P.6 Percentage point difference between 18 year old offer rate and average offer rate by sex

Note: The line for a group is not plotted when that group made fewer than 50 applications in any of the years from 2010-2015.

Men
Women



P.7 18 year old applicants by POLAR3 quintile

Statistic	POLAR3 quintile	2010	2011	2012	2013	2014	2015
June deadline applicants	Quintile 1	900	725	675	600	735	860
	Quintile 2	1,800	1,515	1,370	1,265	1,375	1,775
	Quintile 3	2,795	2,230	2,000	1,885	1,985	2,550
	Quintile 4	4,300	3,370	3,125	2,820	3,010	3,705
	Quintile 5	7,250	6,370	5,585	5,235	5,425	6,775
Placed June deadline applicants	Quintile 1	105	100	95	105	110	115
	Quintile 2	220	205	230	205	225	270
	Quintile 3	335	285	300	310	305	385
	Quintile 4	595	470	490	505	485	605
	Quintile 5	980	890	845	935	890	1,070
All placed applicants	Quintile 1	105	105	100	115	120	120
	Quintile 2	225	210	235	225	260	290
	Quintile 3	345	290	320	355	345	405
	Quintile 4	605	475	515	570	530	640
	Quintile 5	1,005	900	900	1,040	1,010	1,130
June deadline applicants per 10,000 population	Quintile 1	60.7	50.3	47.2	42.9	53.0	61.5
	Quintile 2	117.0	100.9	91.5	85.7	94.1	119.6
	Quintile 3	175.7	145.0	129.4	123.6	131.8	166.0
	Quintile 4	269.9	215.3	196.8	180.2	195.4	236.8
	Quintile 5	427.8	384.8	332.6	316.7	332.6	404.8
Placed June deadline applicants per 10,000 population	Quintile 1	7.0	7.0	6.7	7.4	7.8	8.2
	Quintile 2	14.2	13.6	15.2	13.9	15.4	18.1
	Quintile 3	21.2	18.5	19.5	20.3	20.2	24.9
	Quintile 4	37.4	30.0	30.8	32.4	31.4	38.7
	Quintile 5	57.7	53.8	50.4	56.5	54.6	63.9
All placed applicants per 10,000 population	Quintile 1	7.2	7.2	7.0	8.1	8.6	8.6
	Quintile 2	14.5	13.9	15.6	15.2	17.6	19.5
	Quintile 3	21.6	18.8	20.9	23.1	22.9	26.5
	Quintile 4	38.1	30.4	32.5	36.4	34.5	40.8
	Quintile 5	59.3	54.4	53.7	62.8	61.9	67.6

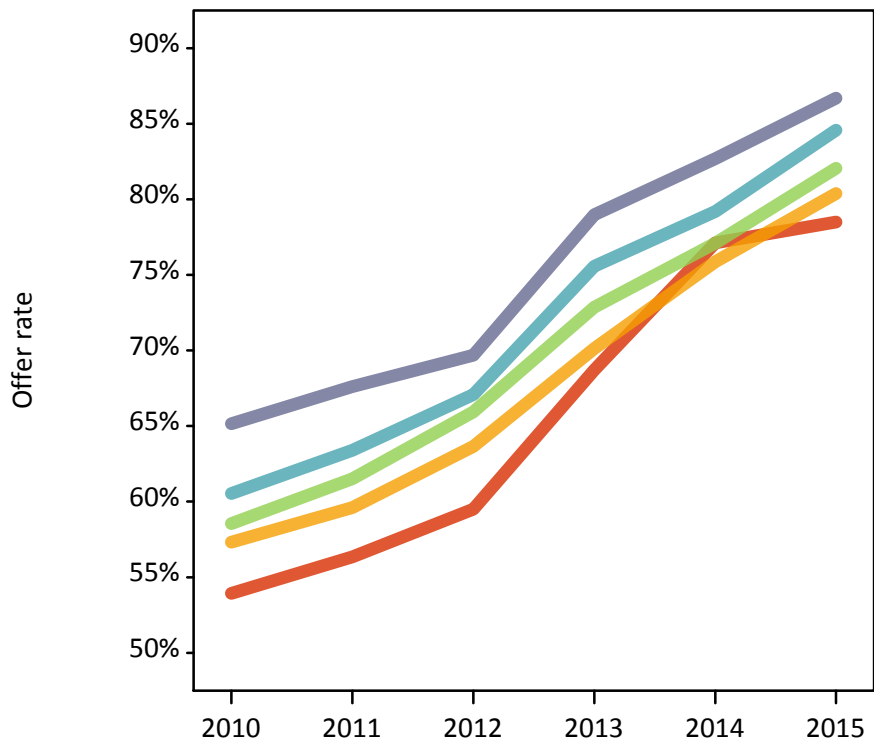
P.8 18 year old applications by POLAR3 quintile

Statistic	POLAR3 quintile	2010	2011	2012	2013	2014	2015
June deadline applications	Quintile 1	915	740	680	605	750	875
	Quintile 2	1,830	1,555	1,390	1,280	1,395	1,810
	Quintile 3	2,845	2,265	2,015	1,905	2,010	2,590
	Quintile 4	4,355	3,405	3,160	2,845	3,045	3,775
	Quintile 5	7,340	6,445	5,635	5,290	5,475	6,850
Offers	Quintile 1	495	415	405	415	580	685
	Quintile 2	1,050	930	885	900	1,060	1,455
	Quintile 3	1,665	1,390	1,330	1,390	1,550	2,125
	Quintile 4	2,640	2,160	2,120	2,150	2,415	3,190
	Quintile 5	4,785	4,355	3,925	4,175	4,525	5,940
Offer rate	Quintile 1	53.9%	56.4%	59.5%	68.7%	77.1%	78.5%
	Quintile 2	57.3%	59.6%	63.6%	70.1%	75.9%	80.4%
	Quintile 3	58.5%	61.5%	65.9%	72.9%	77.1%	82.1%
	Quintile 4	60.5%	63.4%	67.1%	75.6%	79.2%	84.6%
	Quintile 5	65.2%	67.6%	69.7%	79.0%	82.7%	86.7%
Average offer rate	Quintile 1	59.6%	58.6%	64.0%	71.3%	78.2%	80.1%
	Quintile 2	60.0%	61.4%	65.1%	72.1%	77.5%	81.3%
	Quintile 3	60.2%	62.7%	67.0%	74.4%	78.5%	83.7%
	Quintile 4	61.0%	64.2%	67.3%	76.4%	79.6%	84.7%
	Quintile 5	62.9%	66.1%	68.3%	77.2%	81.4%	85.5%
Percentage point difference between offer rate and average offer rate	Quintile 1	-5.6	-2.3	-4.5	-2.6	-1.1	-1.6
	Quintile 2	-2.7	-1.8	-1.5	-2.0	-1.6	-0.9
	Quintile 3	-1.6	-1.2	-1.1	-1.5	-1.4	-1.7
	Quintile 4	-0.4	-0.8	-0.2	-0.8	-0.4	-0.1
	Quintile 5	2.2	1.5	1.4	1.7	1.3	1.2
Contribution of group to the average offer rate	Quintile 1	0.114	0.124	0.112	0.116	0.127	0.115
	Quintile 2	0.165	0.165	0.168	0.173	0.171	0.172
	Quintile 3	0.203	0.203	0.204	0.213	0.212	0.205
	Quintile 4	0.284	0.270	0.281	0.279	0.276	0.271
	Quintile 5	0.465	0.484	0.475	0.489	0.475	0.472

P.9 18 year old offer rate by POLAR3 quintile

Note: The line for a group is not plotted when that group made fewer than 10 applications in any of the years from 2010-2015.

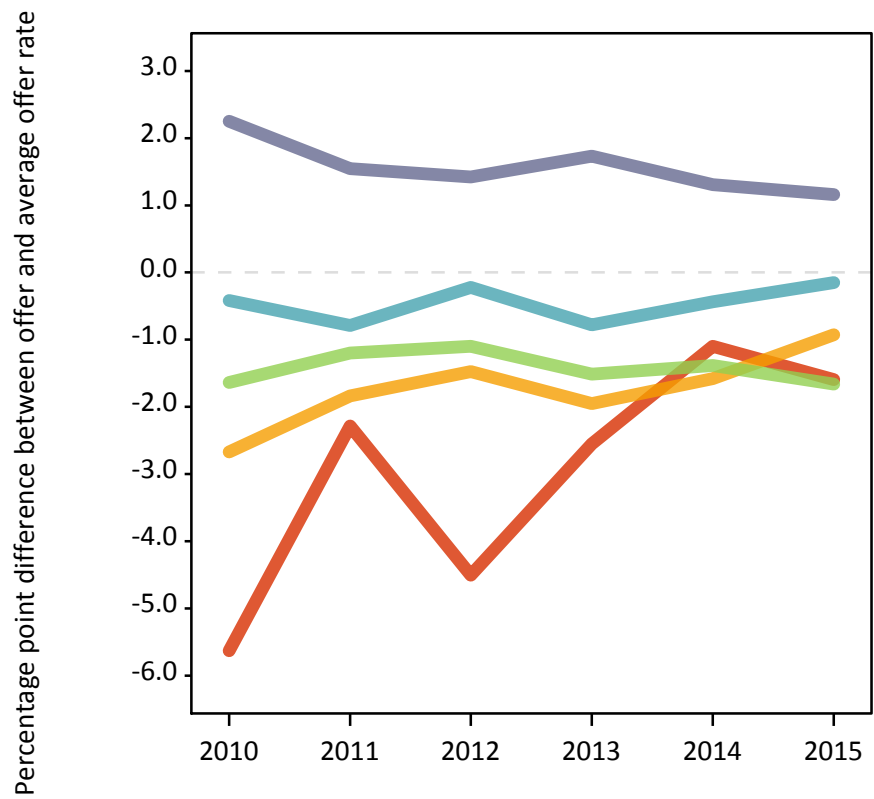
- Quintile 1
- Quintile 2
- Quintile 3
- Quintile 4
- Quintile 5



P.10 Percentage point difference between 18 year old offer rate and average offer rate by POLAR3 quintile

Note: The line for a group is not plotted when that group made fewer than 50 applications in any of the years from 2010-2015.

- Quintile 1
- Quintile 2
- Quintile 3
- Quintile 4
- Quintile 5



P.11 18 year old applicants by ethnic group

Statistic	Ethnic group	2010	2011	2012	2013	2014	2015
June deadline applicants	Asian	2,105	1,770	1,625	1,635	1,820	2,370
	Black	485	460	380	450	525	705
	Mixed	650	630	550	575	620	730
	White	13,565	11,140	9,975	8,945	9,370	11,535
	Other	130	120	135	120	135	180
Placed June deadline applicants	Asian	280	245	275	325	320	405
	Black	55	60	60	90	90	120
	Mixed	70	90	85	105	100	105
	White	1,810	1,530	1,505	1,505	1,490	1,760
	Other	10	20	25	20	10	30
All placed applicants	Asian	295	255	300	390	370	435
	Black	55	60	75	110	115	140
	Mixed	70	90	90	120	110	115
	White	1,840	1,545	1,570	1,635	1,640	1,830
	Other	10	20	25	25	15	35
June deadline applicants per 10,000 population	Asian	340.8	280.7	250.8	248.2	268.2	334.9
	Black	184.5	167.5	135.3	150.9	172.5	221.9
	Mixed	280.1	259.3	210.8	213.0	215.1	237.4
	White	202.2	172.0	154.5	142.2	151.9	185.1
	Other	166.3	150.6	152.6	134.5	147.2	184.8
Placed June deadline applicants per 10,000 population	Asian	45.0	38.9	42.3	49.1	47.2	57.0
	Black	20.2	21.6	21.3	31.0	29.4	38.0
	Mixed	31.1	36.3	31.9	39.6	34.8	34.1
	White	27.0	23.6	23.3	23.9	24.1	28.2
	Other	14.3	25.9	27.1	22.1	10.7	31.2
All placed applicants per 10,000 population	Asian	47.6	40.5	46.6	59.4	54.7	61.8
	Black	20.6	21.6	26.3	37.7	37.9	44.3
	Mixed	31.1	37.2	33.8	44.4	37.5	36.7
	White	27.5	23.8	24.3	26.0	26.6	29.4
	Other	14.3	25.9	29.4	26.5	16.1	36.3

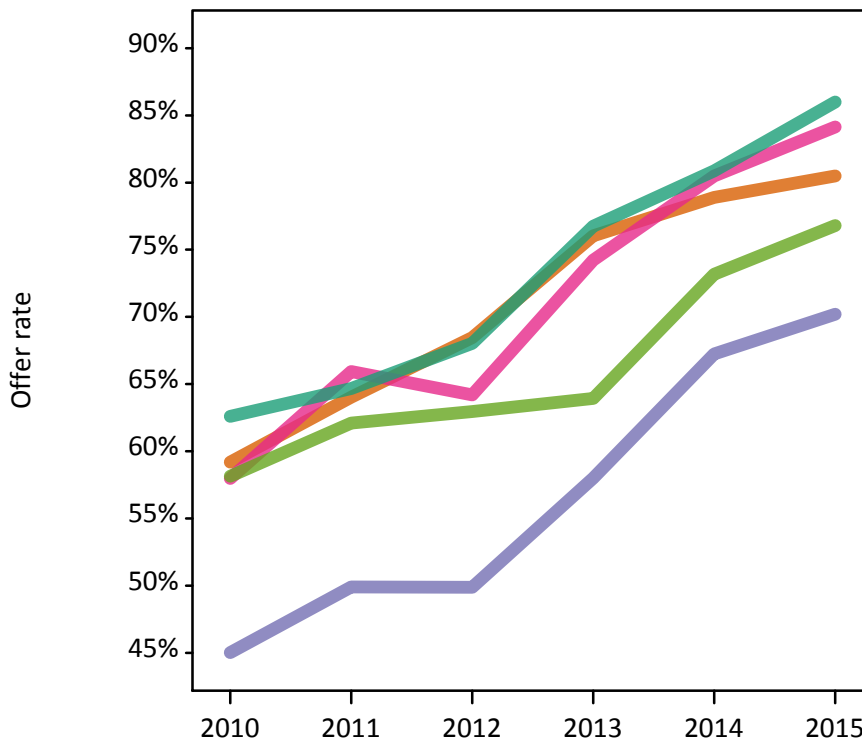
P.12 18 year old applications by ethnic group

Statistic	Ethnic group	2010	2011	2012	2013	2014	2015
June deadline applications	Asian	2,140	1,790	1,640	1,655	1,840	2,405
	Black	490	465	380	450	525	715
	Mixed	660	635	555	580	625	745
	White	13,750	11,300	10,085	9,050	9,490	11,705
	Other	130	125	135	120	140	180
Offers	Asian	1,270	1,145	1,120	1,260	1,450	1,935
	Black	220	230	190	260	355	500
	Mixed	380	420	355	430	505	625
	White	8,610	7,310	6,860	6,945	7,675	10,065
	Other	75	75	85	80	100	140
Offer rate	Asian	59.2%	64.0%	68.5%	76.0%	78.9%	80.5%
	Black	45.0%	49.9%	49.9%	58.0%	67.2%	70.2%
	Mixed	58.0%	65.9%	64.2%	74.2%	80.5%	84.1%
	White	62.6%	64.7%	68.0%	76.7%	80.9%	86.0%
	Other	58.1%	62.1%	63.0%	63.9%	73.2%	76.8%
Average offer rate	Asian	58.7%	63.1%	65.3%	73.9%	78.4%	80.3%
	Black	47.9%	50.4%	50.6%	58.3%	68.9%	75.2%
	Mixed	57.7%	63.7%	63.8%	73.9%	80.3%	84.7%
	White	62.6%	65.0%	68.6%	77.1%	80.9%	85.6%
	Other	58.3%	55.6%	61.3%	67.7%	72.8%	79.8%
Percentage point difference between offer rate and average offer rate	Asian	0.5	0.9	3.1	2.1	0.5	0.2
	Black	-2.9	-0.5	-0.7	-0.3	-1.7	-5.0
	Mixed	0.3	2.2	0.4	0.3	0.2	-0.5
	White	-0.0	-0.3	-0.5	-0.4	-0.0	0.3
	Other	-0.2	6.5	1.7	-3.7	0.3	-3.0
Contribution of group to the average offer rate	Asian	0.234	0.220	0.222	0.227	0.236	0.234
	Black	0.122	0.107	0.133	0.146	0.146	0.130
	Mixed	0.079	0.093	0.093	0.104	0.094	0.083
	White	0.821	0.806	0.805	0.785	0.776	0.763
	Other	0.050	0.066	0.080	0.100	0.074	0.058

P.13 18 year old offer rate by ethnic group

Note: The line for a group is not plotted when that group made fewer than 10 applications in any of the years from 2010-2015.

- Asian
- Black
- Mixed
- White
- Other



P.14 Percentage point difference between 18 year old offer rate and average offer rate by ethnic group

Note: The line for a group is not plotted when that group made fewer than 50 applications in any of the years from 2010-2015.

- Asian
- Black
- Mixed
- White
- Other



P.15 Applicants (all ages)

Statistic	2010	2011	2012	2013	2014	2015
June deadline applicants	23,270	20,145	17,255	16,840	18,545	21,270
Placed June deadline applicants	2,910	2,645	2,445	2,630	2,570	3,050
All placed applicants	2,975	2,690	2,590	2,955	2,890	3,260

P.16 Applications (all ages)

Statistic	2010	2011	2012	2013	2014	2015
June deadline applications	23,650	20,440	17,435	17,040	18,775	21,580
Offers	12,725	11,350	10,190	10,945	12,155	15,950
Offer rate	53.8%	55.5%	58.4%	64.2%	64.7%	73.9%

P.17 Applicants (all ages) by sex

Statistic	Sex	2010	2011	2012	2013	2014	2015
June deadline applicants	Men	12,210	10,585	9,165	8,875	9,745	11,025
	Women	11,060	9,560	8,090	7,965	8,805	10,245
Placed June deadline applicants	Men	1,605	1,355	1,370	1,435	1,355	1,625
	Women	1,310	1,290	1,075	1,195	1,215	1,425
All placed applicants	Men	1,640	1,380	1,435	1,595	1,520	1,730
	Women	1,335	1,310	1,155	1,360	1,370	1,530

P.18 Applications (all ages) by sex

Statistic	Sex	2010	2011	2012	2013	2014	2015
June deadline applications	Men	12,405	10,735	9,260	8,990	9,870	11,195
	Women	11,245	9,705	8,170	8,055	8,905	10,385
Offers	Men	7,030	6,220	5,690	6,090	6,690	8,265
	Women	5,700	5,130	4,500	4,855	5,460	7,690
Offer rate	Men	56.7%	57.9%	61.4%	67.7%	67.8%	73.8%
	Women	50.7%	52.9%	55.1%	60.3%	61.3%	74.0%

P.19 Applicants (all ages) by POLAR3 quintile

Statistic	POLAR3 quintile	2010	2011	2012	2013	2014	2015
June deadline applicants	Quintile 1	1,365	1,170	1,055	1,025	1,185	1,305
	Quintile 2	2,635	2,280	2,035	1,965	2,220	2,615
	Quintile 3	3,895	3,375	2,800	2,830	3,095	3,610
	Quintile 4	5,710	4,705	4,080	3,890	4,390	4,950
	Quintile 5	9,585	8,550	7,240	7,085	7,610	8,725
Placed June deadline applicants	Quintile 1	140	135	135	140	140	150
	Quintile 2	295	285	295	270	285	345
	Quintile 3	445	385	380	405	400	490
	Quintile 4	750	630	590	630	615	740
	Quintile 5	1,265	1,200	1,040	1,185	1,125	1,315
All placed applicants	Quintile 1	145	140	140	155	160	160
	Quintile 2	300	290	305	300	320	375
	Quintile 3	455	390	405	465	450	530
	Quintile 4	765	640	625	710	680	785
	Quintile 5	1,295	1,215	1,110	1,315	1,275	1,400

P.20 Applications (all ages) by POLAR3 quintile

Statistic	POLAR3 quintile	2010	2011	2012	2013	2014	2015
June deadline applications	Quintile 1	1,390	1,195	1,060	1,040	1,205	1,330
	Quintile 2	2,695	2,340	2,065	1,995	2,260	2,660
	Quintile 3	3,970	3,430	2,825	2,865	3,130	3,665
	Quintile 4	5,795	4,750	4,125	3,925	4,440	5,030
	Quintile 5	9,715	8,660	7,310	7,170	7,695	8,825
Offers	Quintile 1	605	540	500	545	705	850
	Quintile 2	1,280	1,140	1,060	1,115	1,305	1,755
	Quintile 3	2,000	1,745	1,565	1,700	1,885	2,570
	Quintile 4	3,100	2,630	2,440	2,575	2,885	3,760
	Quintile 5	5,695	5,265	4,595	4,990	5,340	6,975
Offer rate	Quintile 1	43.5%	45.3%	47.3%	52.3%	58.6%	64.0%
	Quintile 2	47.6%	48.7%	51.3%	55.9%	57.8%	65.9%
	Quintile 3	50.4%	50.8%	55.4%	59.3%	60.3%	70.1%
	Quintile 4	53.5%	55.3%	59.1%	65.6%	64.9%	74.7%
	Quintile 5	58.6%	60.8%	62.8%	69.6%	69.4%	79.0%

P.21 Applicants (all ages) by ethnic group

Statistic	Ethnic group	2010	2011	2012	2013	2014	2015
June deadline applicants	Asian	3,220	2,770	2,485	2,575	3,010	3,490
	Black	1,060	995	855	930	1,035	1,265
	Mixed	945	880	750	820	945	1,050
	White	17,570	15,020	12,740	12,130	13,100	14,885
	Other	210	220	220	205	260	290
Placed June deadline applicants	Asian	375	340	355	430	420	515
	Black	90	95	85	130	120	170
	Mixed	105	115	110	130	130	135
	White	2,300	2,040	1,840	1,905	1,860	2,150
	Other	15	30	35	25	20	40
All placed applicants	Asian	395	355	390	515	485	570
	Black	95	95	100	165	160	200
	Mixed	105	120	115	145	140	145
	White	2,340	2,060	1,925	2,070	2,045	2,250
	Other	15	30	35	30	30	45

P.22 Applications (all ages) by ethnic group

Statistic	Ethnic group	2010	2011	2012	2013	2014	2015
June deadline applications	Asian	3,285	2,805	2,510	2,610	3,050	3,535
	Black	1,075	1,015	860	935	1,040	1,280
	Mixed	965	890	755	820	955	1,065
	White	17,840	15,235	12,875	12,285	13,265	15,110
	Other	215	225	225	205	265	290
Offers	Asian	1,630	1,480	1,405	1,600	1,820	2,430
	Black	315	335	260	360	455	670
	Mixed	485	505	445	535	630	775
	White	10,060	8,775	7,865	8,245	9,000	11,690
	Other	100	105	110	100	140	180
Offer rate	Asian	49.6%	52.8%	56.0%	61.3%	59.6%	68.7%
	Black	29.4%	33.1%	29.9%	38.5%	43.9%	52.3%
	Mixed	50.4%	56.5%	58.8%	65.1%	65.6%	72.7%
	White	56.4%	57.6%	61.1%	67.1%	67.9%	77.4%
	Other	45.4%	47.6%	49.3%	49.5%	54.0%	61.3%

Technical Notes and Definitions

UCAS undergraduate scheme

Adjustment

Adjustment allows applicants who have met and exceeded the terms of their conditional firm offer to seek and find a place at another provider whilst keeping their place at their original firm choice provider.

Clearing

Clearing is a route for applicants that are not placed and holding no offers to find a place on courses with vacancies.

Cycle year

The UCAS application cycle which runs from September to October the following year. For example the 2015 cycle runs from September 2014 through to October 2015.

End of cycle

The point in the cycle to which the numbers in this report refer, and the point at which the cycle is closed such that no more applications or offers can be made, and no more applicants can be placed. Numbers reported at the end of cycle exclude information on a small number of applicants who cancelled during the cycle.

Extra

Applicants who are unsuccessful in obtaining an offer or decline all offers may be eligible to apply through Extra, where they can apply to one further course at a time. Extra operates from 25 February until early July. It provides applicants who are eligible the possibility of obtaining an offer before exam results are published and Clearing starts.

June 30 deadline

The deadline for main scheme applications. Applicants who apply after this date will go directly into Clearing.

Record of Prior Acceptance (RPA)

RPA is an acceptance route used when a provider informs UCAS of applicants it has accepted outside of the normal application process (e.g. individuals who have applied directly to the provider).

Reporting groups

Ethnic group

High level grouping of ethnic origin as declared by the applicant: 'White', 'Black', 'Asian', 'Mixed', 'Other', 'Unknown'. Applicants who declare themselves as 'Unknown' ethnic origin are not reported in these tables, but are included in the associated csv data file.

POLAR3 quintile

Developed by HEFCE, POLAR3 classifies small areas across the UK into five groups according to their level of young participation in Higher Education. Each of these groups represents around 20 per cent of young people and is ranked from Quintile 1 (areas with the lowest young participation rates, considered as the most disadvantaged) to Quintile 5 (highest young participation rates, considered most advantaged). POLAR3 is based on the participation rates of young people between 2005 and 2009 who entered Higher Education between 2005-06 and 2010-11, therefore is most suitable for applicants aged 19 and under. These groups are assigned using the postcode declared by the applicant at the time of their application. If a UK postcode is invalid, considered unsafe for measurement or there is no link to Census geography possible then the applicant is not assigned to a quintile. Applicants with no POLAR3 quintile are not reported.

Sex

Sex as declared by the applicant.

SIMD quintile

Scottish index of multiple deprivation (SIMD) for 2012 identifies small area concentrations of multiple deprivation across all of Scotland, providing a relative measure of deprivation amongst 6505 small areas (data zones) based on 7 socio-economic domains. These small areas are classified into five groups ranked from Quintile 1 (considered the most deprived) to Quintile 5 (considered least deprived), with equal populations in each quintile. Quintiles are assigned using the postcode declared by the applicant, applicants declaring invalid postcodes are classified as 'Not assigned' and are not reported.

SIMD is only defined for applicants domiciled in Scotland, therefore any applicants domiciled outside of Scotland cannot be assigned to an SIMD quintile and so are not reported for this measure.

SIMD is only reported for providers in Scotland. Application and entry rates by SIMD are reported in the 2015 End of Cycle Report and the 2016 cycle January deadline application rate report.

Statistics reported in the tables

All placed applicants

The number of applicants placed for entry into higher education at the provider through one of their choices, including any choices made through Extra, or via Adjustment, Clearing or RPA.

All placed applicants per 10,000 population

The number of total UK domiciled 18 year old placed applicants for entry into higher education at the provider divided by the number of UK 18 year olds in the population, multiplied by 10,000. This gives the number of 18 year olds, for every 10,000 in the population, that were placed at the provider through one of their choices, including any choices made through Extra, or via Adjustment, Clearing or RPA. It is an alternative way of expressing the entry rate to a provider. By referencing the underlying population this statistic shows how the number of placed applicants is changing in relation to the available pool of potential applicants and so gives the chance that somebody from the group will be placed at a provider.

This statistic is only reported for 18 year olds.

Average offer rate

The offer rate that you might expect if the predicted grades and subject choice of applicants were the only factors that influenced whether an applicant was made an offer by the provider. The average offer rate is calculated by dividing applicants according to their specific combination of grades (for A levels the best three predicted grades are used, for BTECs, International Baccalaureate and Scottish Highers and Advanced Highers, predicted grades along with any grades already achieved upon applying are used) and subject choice. For each combination the number of main scheme offers is divided by the number of main scheme applications, to give an overall offer rate. This is then multiplied by the number of applications made by the group for which the average offer rate is being calculated (for example POLAR3 quintile 1), to give an average number of offers for that group. These average number of offers are then added together across all combinations of predicted grade and subject and divided by the number of main scheme applications from the group to give the average offer rate.

The average offer rate does not attempt to control for any other factors that may play a part in the decision to make an offer, such as the subject of the qualifications studied, their relevance to a course, or the grade in each subject; higher numbers of A levels being studied; the exact profile of grades predicted; personal statements; teacher references; interviews; or any other criteria (such as work experience or portfolios) that may be part of the admissions decision.

This statistic is only reported for 18 year olds.

Contribution of group to the average offer rate

The way in which the average offer rate is defined means that the pattern of application and offers of a group (for example POLAR3 quintile 1) will always contribute, in part, to the average offer rate for that group. When this contribution is large, the average offer rate will mainly reflect the patterns for the group, meaning that the value of the average offer rate will be similar to the offer rate, the percentage point difference statistic will be small, and any real difference between the offer rate and what might be expected given the predicted grades and subject choices of the applicants will be difficult to detect.

Values of the contribution of group to the average offer rate range between 0 and 1. The closer the value is to 1 the greater the contribution a group makes to its own average offer rate.

This statistic is only reported for 18 year olds.

Placed June deadline applicants

An applicant who has been placed for entry into higher education at the provider through a June deadline application.

Placed June deadline applicants per 10,000 population

The number of UK domiciled 18 year old placed June deadline applicants at the provider divided by the number of UK 18 year olds in the population, multiplied by 10,000. This gives the number of 18 year olds, for every 10,000 in the population, that were placed at the provider through one of their June deadline applications. It is an alternative way of expressing the entry rate to a provider, but for placed June deadline applicants only. By referencing the underlying population this statistic shows how the number of placed June deadline applicants is changing in relation to the available pool of potential 18 year old applicants and so gives the chance that somebody from the group will be placed at a provider through a June deadline application.

This statistic is only reported for 18 year olds.

June deadline applications

An application (or choice) to a course in higher education to the provider that is made by the June 30 deadline. Each applicant can make up to five choices this way. The number of June deadline applications does not include choices made through the following routes: Clearing, Extra, Adjustment and RPAs. Applications made to October deadline courses received after the October deadline are not included in these statistics.

June deadline applicants

The number of applicants that made at least one application to the provider by the June 30 deadline.

June deadline applicants per 10,000 population

The number of UK domiciled 18 year old June deadline applicants to the provider divided by the number of UK 18 year olds in the population, multiplied by 10,000. This gives the number of 18 year olds, for every 10,000 in the population, who applied by the June 30 deadline. It is equivalent to the application rate. By referencing the underlying population this statistic shows how the number of June deadline applicants is changing in relation to the available pool of potential 18 year old applicants and so gives the chance that somebody from the group will apply to a provider by the June 30 deadline.

This statistic is only reported for 18 year olds.

Offers

An offer is defined as a provider's decision in response to an application to offer a place to an applicant, often subject to the applicant satisfying academic and/or other criteria, via a June deadline application (i.e. does not cover choices made through the following routes: Clearing, Extra, Adjustment and RPAs).

Offer rate

The number of offers made divided by the number of June deadline applications. This gives the proportion of all June deadline applications to the provider that received an offer.

Percentage point difference between offer rate and average offer rate

The offer rate minus the average offer rate.

The percentage point difference can be compared to the expected range of statistical variation resulting from the calculation of the average offer rate using the Average Offer Rate Lookup Table. Where the value of the percentage point difference lies outside of this range, the percentage point difference may be considered to represent a real difference between the offer rate and the average offer rate.

Other definitions

Age

This analysis uses country-specific age definitions that align with the cut off points for school and college cohorts within the different administrations of the UK. For England and Wales, ages are defined on the 31 August, for Northern Ireland on the 1 July and for Scotland on the 28 February the following year. Defining ages in this way matches the assignment of children to school cohorts. For applicants outside of the UK a cohort cut off of 31 August has been used.

Provider

A higher education provider - a university or college.

UK domiciled

Declared area of permanent residence within England, Northern Ireland, Scotland and Wales. Applicants from the Channel Islands and Isle of Man are not included.