

S82 UCS (University of Suffolk)

Cycle years: 2010 - 2015

Cycle Reference Point: End of Cycle

Applicant coverage: UK domiciled

Reporting groups: Sex, POLAR3, ethnic group

Applicant statistics: June deadline applicants, placed June deadline applicants, all placed applicants, June deadline applicants per 10,000 population, placed June deadline applicants per 10,000 population, all placed applicants per 10,000 population

Application statistics: June deadline applications, offers, offer rate, average offer rate, percentage point difference between offer rate and average offer rate, contribution of group to the average offer rate

Non-disclosure controls: To avoid the disclosure of information about any individual the following measures are taken

- Applicants, placed applicants, applications and offers are rounded to the nearest 5.
- Applicants/placed applicants per 10,000 population figures are reported as 0 if the applicant/placed applicant figures are rounded to 0.
- All statistics related to the offer rate are not reported when the number of applications for a group is less than 10. The percentage point difference between the offer rate and the average offer rate is not reported when the number of applications for a group is less than 50.
- Offer rates are reported as 0% if there are fewer than 5 offers, and 100% if the number of offers is within 5 of the number of applications. When the offer rate is reported as 0% or 100%, it is reported in italics.

Contents:

18 year old applicants:	P.1
18 year old applications:	P.2
18 year old applicants by sex:	P.3
18 year old applications by sex:	P.4
18 year old applicants by POLAR3 quintile:	P.7
18 year old applications by POLAR3 quintile:	P.8
18 year old applicants by ethnic group:	P.11
18 year old applications by ethnic group:	P.12
Applicants (all ages):	P.15
Applications (all ages):	P.16
Applicants (all ages) by sex:	P.17
Applications (all ages) by sex:	P.18
Applicants (all ages) by POLAR3 quintile:	P.19
Applications (all ages) by POLAR3 quintile:	P.20
Applicants (all ages) by ethnic group:	P.21
Applications (all ages) by ethnic group:	P.22

P.1 18 year old applicants

Statistic	2010	2011	2012	2013	2014	2015
June deadline applicants	1,005	1,100	870	985	1,195	1,175
Placed June deadline applicants	310	290	215	235	215	285
All placed applicants	465	515	290	305	285	365
June deadline applicants per 10,000 population	12.7	14.3	11.2	13.0	15.9	15.3
Placed June deadline applicants per 10,000	3.9	3.8	2.8	3.1	2.8	3.7
All placed applicants per 10,000 population	5.9	6.7	3.7	4.0	3.8	4.8

P.2 18 year old applications

Statistic	2010	2011	2012	2013	2014	2015
June deadline applications	1,115	1,240	985	1,075	1,290	1,305
Offers	875	905	710	790	900	925
Offer rate	78.4%	73.1%	72.1%	73.3%	69.7%	70.9%

P.3 18 year old applicants by sex

Statistic	Sex	2010	2011	2012	2013	2014	2015
June deadline applicants	Men	310	310	235	245	325	325
	Women	695	790	635	740	870	850
Placed June deadline applicants	Men	75	90	60	55	70	90
	Women	230	200	160	180	140	195
All placed applicants	Men	140	165	75	85	90	105
	Women	325	350	215	220	195	260
June deadline applicants per 10,000 population	Men	7.7	7.9	6.0	6.3	8.4	8.3
	Women	17.9	21.0	16.8	20.0	23.8	22.7
Placed June deadline applicants per 10,000 population	Men	1.9	2.3	1.5	1.4	1.9	2.2
	Women	6.0	5.3	4.2	4.9	3.9	5.2
All placed applicants per 10,000 population	Men	3.5	4.2	1.9	2.2	2.3	2.7
	Women	8.4	9.3	5.7	5.9	5.3	7.0

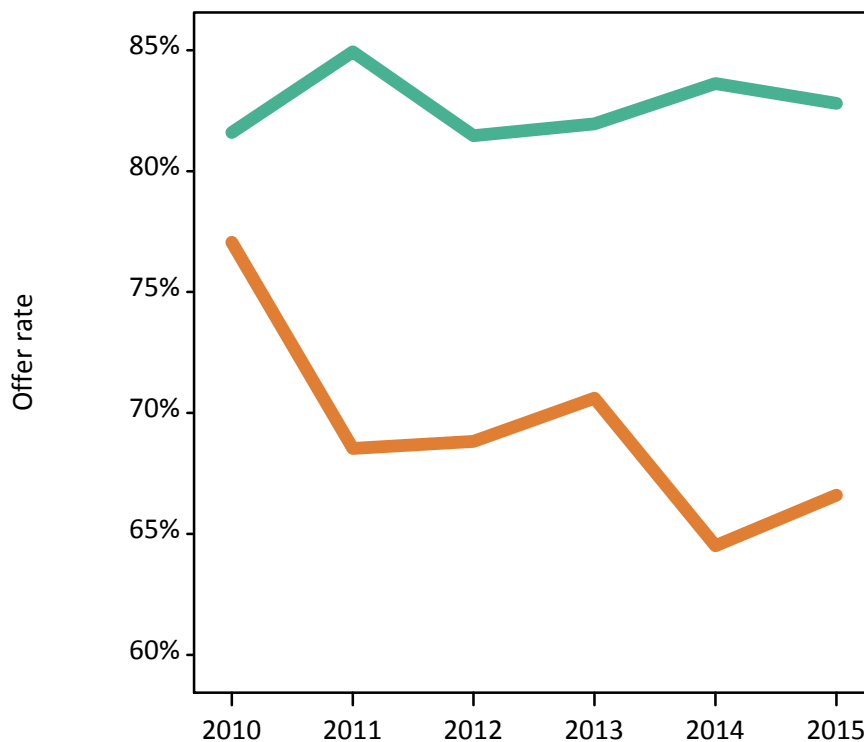
P.4 18 year old applications by sex

Statistic	Sex	2010	2011	2012	2013	2014	2015
June deadline applications	Men	335	345	260	255	350	350
	Women	775	895	730	820	940	955
Offers	Men	275	295	210	210	290	290
	Women	600	610	500	580	605	635
Offer rate	Men	81.6%	84.9%	81.5%	82.0%	83.6%	82.8%
	Women	77.1%	68.5%	68.8%	70.6%	64.5%	66.6%
Average offer rate	Men	83.5%	84.0%	80.9%	80.4%	82.7%	82.4%
	Women	76.2%	68.9%	69.0%	71.1%	64.9%	66.7%
Percentage point difference between offer rate and average offer rate	Men	-1.9	0.9	0.6	1.5	0.9	0.4
	Women	0.8	-0.4	-0.2	-0.5	-0.3	-0.2
Contribution of group to the average offer rate	Men	0.684	0.646	0.670	0.626	0.640	0.597
	Women	0.863	0.863	0.883	0.884	0.867	0.853

P.5 18 year old offer rate by sex

Note: The line for a group is not plotted when that group made fewer than 10 applications in any of the years from 2010-2015.

Men
Women



P.6 Percentage point difference between 18 year old offer rate and average offer rate by sex

Note: The line for a group is not plotted when that group made fewer than 50 applications in any of the years from 2010-2015.

Men
Women



P.7 18 year old applicants by POLAR3 quintile

Statistic	POLAR3 quintile	2010	2011	2012	2013	2014	2015
June deadline applicants	Quintile 1	205	195	185	195	240	240
	Quintile 2	185	235	165	225	235	230
	Quintile 3	200	250	210	200	280	270
	Quintile 4	245	225	195	215	270	260
	Quintile 5	170	190	115	155	170	170
Placed June deadline applicants	Quintile 1	70	60	55	55	50	70
	Quintile 2	60	70	50	45	45	60
	Quintile 3	60	55	45	60	55	60
	Quintile 4	75	55	45	45	45	60
	Quintile 5	40	50	25	30	20	35
All placed applicants	Quintile 1	100	90	70	75	65	85
	Quintile 2	85	110	60	60	65	70
	Quintile 3	95	110	60	70	65	85
	Quintile 4	110	115	65	60	55	80
	Quintile 5	75	90	35	40	30	45
June deadline applicants per 10,000 population	Quintile 1	13.8	13.5	13.1	14.0	17.2	17.1
	Quintile 2	11.9	15.8	11.1	15.1	16.1	15.4
	Quintile 3	12.6	16.2	13.5	13.1	18.6	17.7
	Quintile 4	15.4	14.4	12.2	13.6	17.5	16.7
	Quintile 5	9.9	11.5	6.9	9.4	10.4	10.0
Placed June deadline applicants per 10,000 population	Quintile 1	4.9	4.2	3.8	3.9	3.4	4.9
	Quintile 2	3.8	4.6	3.3	3.1	3.1	3.9
	Quintile 3	3.8	3.6	2.9	3.9	3.5	4.0
	Quintile 4	4.7	3.4	2.7	2.8	2.9	3.7
	Quintile 5	2.5	3.0	1.4	1.8	1.3	2.2
All placed applicants per 10,000 population	Quintile 1	6.9	6.3	5.0	5.3	4.7	5.9
	Quintile 2	5.4	7.3	4.0	3.9	4.4	4.8
	Quintile 3	5.9	7.0	3.8	4.7	4.5	5.5
	Quintile 4	7.0	7.4	4.0	3.8	3.7	5.1
	Quintile 5	4.4	5.4	2.0	2.5	1.8	2.7

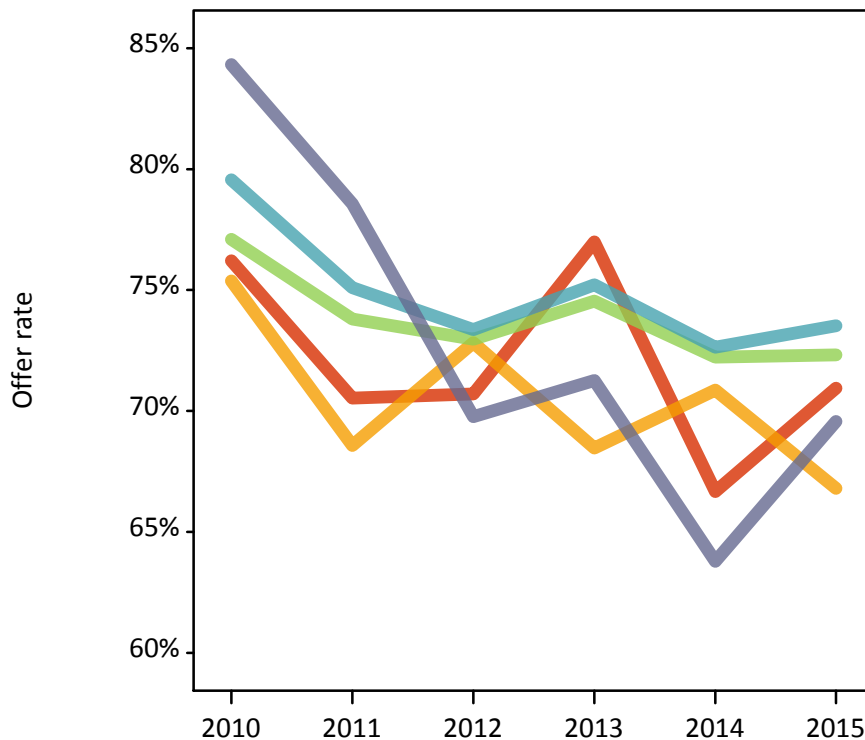
P.8 18 year old applications by POLAR3 quintile

Statistic	POLAR3 quintile	2010	2011	2012	2013	2014	2015
June deadline applications	Quintile 1	225	225	215	215	260	265
	Quintile 2	200	280	195	240	255	255
	Quintile 3	225	270	235	220	305	305
	Quintile 4	275	250	215	235	285	285
	Quintile 5	185	210	130	165	185	185
Offers	Quintile 1	175	160	150	165	170	190
	Quintile 2	150	190	140	165	180	170
	Quintile 3	175	200	170	165	220	220
	Quintile 4	220	185	155	175	205	210
	Quintile 5	155	165	90	120	120	130
Offer rate	Quintile 1	76.2%	70.5%	70.7%	77.0%	66.7%	70.9%
	Quintile 2	75.4%	68.6%	72.8%	68.5%	70.9%	66.8%
	Quintile 3	77.1%	73.8%	73.0%	74.5%	72.2%	72.3%
	Quintile 4	79.6%	75.1%	73.4%	75.2%	72.6%	73.5%
	Quintile 5	84.3%	78.6%	69.8%	71.3%	63.8%	69.6%
Average offer rate	Quintile 1	75.7%	73.1%	71.4%	73.7%	68.4%	70.8%
	Quintile 2	78.2%	69.4%	72.9%	70.1%	72.0%	67.7%
	Quintile 3	77.5%	70.7%	74.0%	75.3%	70.4%	74.4%
	Quintile 4	80.8%	73.9%	72.1%	73.5%	70.6%	69.8%
	Quintile 5	79.7%	80.2%	68.8%	74.5%	66.1%	70.9%
Percentage point difference between offer rate and average offer rate	Quintile 1	0.5	-2.6	-0.7	3.3	-1.7	0.1
	Quintile 2	-2.8	-0.8	-0.1	-1.6	-1.1	-0.9
	Quintile 3	-0.4	3.1	-1.0	-0.7	1.9	-2.1
	Quintile 4	-1.2	1.2	1.3	1.7	2.0	3.7
	Quintile 5	4.6	-1.6	0.9	-3.3	-2.3	-1.3
Contribution of group to the average offer rate	Quintile 1	0.435	0.430	0.427	0.438	0.424	0.397
	Quintile 2	0.394	0.425	0.440	0.412	0.390	0.385
	Quintile 3	0.458	0.405	0.474	0.393	0.418	0.447
	Quintile 4	0.451	0.433	0.488	0.426	0.417	0.428
	Quintile 5	0.435	0.422	0.435	0.400	0.371	0.404

P.9 18 year old offer rate by POLAR3 quintile

Note: The line for a group is not plotted when that group made fewer than 10 applications in any of the years from 2010-2015.

- Quintile 1
- Quintile 2
- Quintile 3
- Quintile 4
- Quintile 5



P.10 Percentage point difference between 18 year old offer rate and average offer rate by POLAR3 quintile

Note: The line for a group is not plotted when that group made fewer than 50 applications in any of the years from 2010-2015.

- Quintile 1
- Quintile 2
- Quintile 3
- Quintile 4
- Quintile 5



P.11 18 year old applicants by ethnic group

Statistic	Ethnic group	2010	2011	2012	2013	2014	2015
June deadline applicants	Asian	20	25	25	35	55	55
	Black	20	40	20	35	60	60
	Mixed	20	30	25	25	40	40
	White	935	1,000	800	885	1,030	1,010
	Other	0	5	0	5	10	10
Placed June deadline applicants	Asian	5	5	5	0	5	5
	Black	5	5	0	0	5	5
	Mixed	5	5	5	15	5	10
	White	295	275	205	215	200	265
	Other	0	0	0	0	0	0
All placed applicants	Asian	10	15	5	0	5	10
	Black	15	30	5	10	5	5
	Mixed	10	20	10	15	10	15
	White	420	445	265	280	260	330
	Other	0	5	0	0	0	5
June deadline applicants per 10,000 population	Asian	3.1	3.8	3.7	5.3	7.8	7.6
	Black	7.6	14.3	6.4	11.1	19.8	18.9
	Mixed	9.5	12.8	9.6	9.6	14.3	12.3
	White	14.0	15.5	12.4	14.1	16.7	16.2
	Other	0.0	3.7	0.0	4.4	9.7	8.3
Placed June deadline applicants per 10,000 population	Asian	0.8	0.6	0.6	0.0	0.4	0.4
	Black	1.9	1.8	0.0	0.0	1.3	1.9
	Mixed	1.7	2.5	2.7	4.8	2.1	3.2
	White	4.4	4.2	3.1	3.4	3.2	4.2
	Other	0.0	0.0	0.0	0.0	0.0	0.0
All placed applicants per 10,000 population	Asian	1.9	2.7	1.1	0.0	0.9	1.6
	Black	6.1	11.3	2.5	3.0	1.3	2.2
	Mixed	4.3	7.4	3.1	5.5	3.8	4.2
	White	6.3	6.9	4.1	4.4	4.2	5.3
	Other	0.0	4.9	0.0	0.0	0.0	4.2

P.12 18 year old applications by ethnic group

Statistic	Ethnic group	2010	2011	2012	2013	2014	2015
June deadline applications	Asian	25	25	25	35	55	60
	Black	20	40	20	35	60	60
	Mixed	25	40	30	25	40	40
	White	1,040	1,130	910	975	1,125	1,135
	Other	0	5	0	5	10	10
Offers	Asian	15	20	15	20	25	25
	Black	15	20	10	20	30	35
	Mixed	15	30	25	20	30	35
	White	825	830	660	725	810	825
	Other	0	5	0	5	5	5
Offer rate	Asian	56.5%	76.9%	61.5%	50.0%	44.4%	41.4%
	Black	65.0%	48.7%	61.1%	57.6%	48.3%	56.7%
	Mixed	60.9%	75.0%	80.0%	100.0%	69.0%	85.4%
	White	79.4%	73.8%	72.5%	74.4%	72.1%	73.0%
	Other	N/A	N/A	N/A	N/A	N/A	N/A
Average offer rate	Asian	70.1%	72.8%	63.5%	56.4%	53.8%	50.7%
	Black	78.2%	54.9%	63.7%	68.1%	51.9%	60.4%
	Mixed	65.1%	72.9%	80.8%	75.8%	67.0%	85.0%
	White	78.8%	73.7%	72.3%	74.2%	71.6%	72.2%
	Other	N/A	N/A	N/A	N/A	N/A	N/A
Percentage point difference between offer rate and average offer rate	Asian	N/A	N/A	N/A	N/A	-9.4	-9.3
	Black	N/A	N/A	N/A	N/A	-3.6	-3.7
	Mixed	N/A	N/A	N/A	N/A	N/A	N/A
	White	0.6	0.0	0.2	0.2	0.5	0.8
	Other	N/A	N/A	N/A	N/A	N/A	N/A
Contribution of group to the average offer rate	Asian	0.237	0.251	0.406	0.303	0.236	0.333
	Black	0.279	0.272	0.424	0.234	0.288	0.317
	Mixed	0.272	0.349	0.344	0.257	0.327	0.351
	White	0.952	0.938	0.950	0.930	0.908	0.912
	Other	N/A	N/A	N/A	N/A	N/A	N/A

P.13 18 year old offer rate by ethnic group

Note: The line for a group is not plotted when that group made fewer than 10 applications in any of the years from 2010-2015.

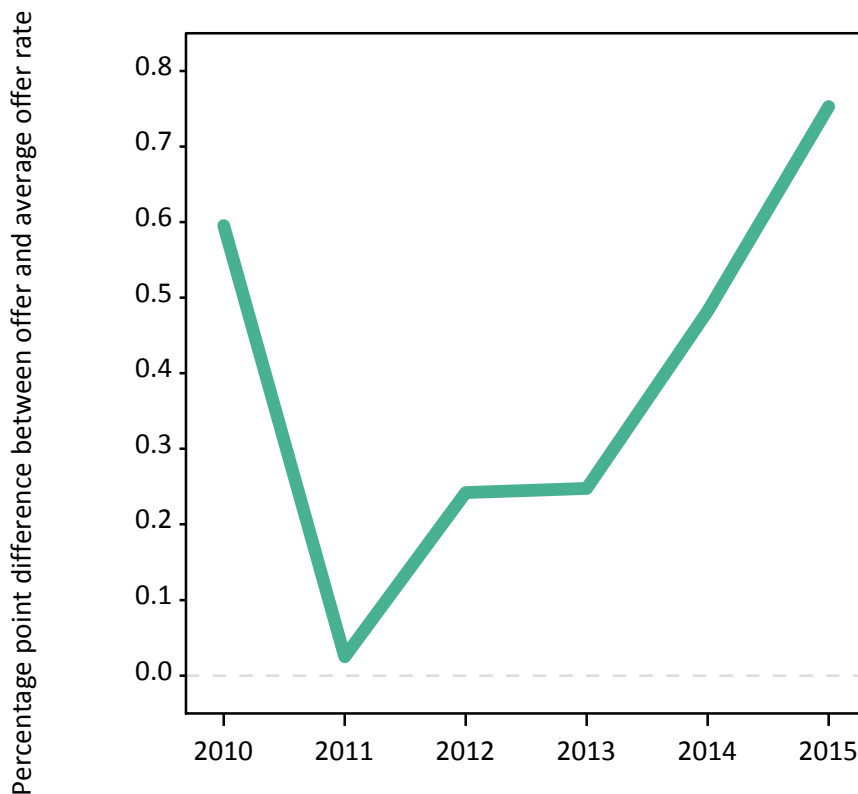
- Asian
- Black
- Mixed
- White
- Other



P.14 Percentage point difference between 18 year old offer rate and average offer rate by ethnic group

Note: The line for a group is not plotted when that group made fewer than 50 applications in any of the years from 2010-2015.

- Asian
- Black
- Mixed
- White
- Other



P.15 Applicants (all ages)

Statistic	2010	2011	2012	2013	2014	2015
June deadline applicants	3,200	3,465	2,850	3,125	3,510	3,415
Placed June deadline applicants	1,200	1,090	935	990	935	1,045
All placed applicants	1,775	1,770	1,370	1,490	1,425	1,560

P.16 Applications (all ages)

Statistic	2010	2011	2012	2013	2014	2015
June deadline applications	3,725	4,135	3,370	3,580	4,005	3,875
Offers	2,320	2,310	1,940	2,090	2,225	2,190
Offer rate	62.2%	55.9%	57.6%	58.4%	55.6%	56.6%

P.17 Applicants (all ages) by sex

Statistic	Sex	2010	2011	2012	2013	2014	2015
June deadline applicants	Men	920	970	780	880	975	965
	Women	2,280	2,495	2,070	2,245	2,535	2,450
Placed June deadline applicants	Men	290	315	290	305	280	315
	Women	910	775	645	685	655	730
All placed applicants	Men	520	570	445	500	465	485
	Women	1,255	1,200	925	990	960	1,075

P.18 Applications (all ages) by sex

Statistic	Sex	2010	2011	2012	2013	2014	2015
June deadline applications	Men	1,035	1,130	890	950	1,070	1,070
	Women	2,690	3,005	2,480	2,630	2,935	2,805
Offers	Men	690	740	615	645	750	695
	Women	1,630	1,570	1,330	1,450	1,475	1,495
Offer rate	Men	66.6%	65.6%	69.0%	67.7%	70.3%	65.0%
	Women	60.6%	52.3%	53.5%	55.1%	50.3%	53.4%

P.19 Applicants (all ages) by POLAR3 quintile

Statistic	POLAR3 quintile	2010	2011	2012	2013	2014	2015
June deadline applicants	Quintile 1	765	790	720	770	825	825
	Quintile 2	635	720	550	675	730	730
	Quintile 3	630	705	610	635	720	710
	Quintile 4	680	700	570	580	700	650
	Quintile 5	480	535	390	460	525	485
Placed June deadline applicants	Quintile 1	305	270	250	270	260	300
	Quintile 2	235	240	200	205	195	210
	Quintile 3	245	215	195	220	190	225
	Quintile 4	245	220	170	165	160	185
	Quintile 5	165	145	120	125	130	125
All placed applicants	Quintile 1	445	420	375	415	430	440
	Quintile 2	330	370	285	305	290	310
	Quintile 3	370	355	275	310	270	320
	Quintile 4	360	370	245	240	240	285
	Quintile 5	265	245	185	215	185	195

P.20 Applications (all ages) by POLAR3 quintile

Statistic	POLAR3 quintile	2010	2011	2012	2013	2014	2015
June deadline applications	Quintile 1	910	965	870	875	940	955
	Quintile 2	730	890	665	770	840	815
	Quintile 3	735	835	720	745	830	815
	Quintile 4	795	795	645	650	790	725
	Quintile 5	550	630	460	540	600	545
Offers	Quintile 1	520	515	460	525	500	560
	Quintile 2	435	480	400	445	460	430
	Quintile 3	475	470	430	440	500	480
	Quintile 4	515	470	375	385	440	420
	Quintile 5	365	370	270	295	320	290
Offer rate	Quintile 1	56.8%	53.3%	53.2%	60.0%	53.4%	58.6%
	Quintile 2	59.8%	53.9%	60.3%	57.6%	54.8%	52.8%
	Quintile 3	64.7%	56.3%	59.6%	59.1%	60.4%	58.8%
	Quintile 4	65.2%	59.2%	58.1%	59.4%	55.9%	57.7%
	Quintile 5	66.8%	58.5%	58.4%	54.5%	53.5%	53.7%

P.21 Applicants (all ages) by ethnic group

Statistic	Ethnic group	2010	2011	2012	2013	2014	2015
June deadline applicants	Asian	80	105	95	125	160	160
	Black	195	245	225	235	290	320
	Mixed	100	95	75	100	105	100
	White	2,790	2,990	2,420	2,635	2,920	2,790
	Other	15	15	15	20	25	25
Placed June deadline applicants	Asian	15	20	15	20	20	20
	Black	45	55	55	35	50	45
	Mixed	30	30	30	30	25	30
	White	1,100	980	830	895	830	945
	Other	5	5	5	5	5	5
All placed applicants	Asian	40	50	20	30	40	40
	Black	95	150	100	85	95	90
	Mixed	60	50	45	50	45	50
	White	1,540	1,495	1,175	1,290	1,225	1,350
	Other	10	10	5	15	15	15

P.22 Applications (all ages) by ethnic group

Statistic	Ethnic group	2010	2011	2012	2013	2014	2015
June deadline applications	Asian	95	120	110	135	180	170
	Black	225	270	260	270	315	340
	Mixed	125	120	100	110	125	110
	White	3,245	3,590	2,865	3,025	3,350	3,200
	Other	20	15	20	20	25	25
Offers	Asian	45	50	45	60	70	50
	Black	80	90	95	85	120	105
	Mixed	65	75	60	70	70	65
	White	2,105	2,075	1,725	1,860	1,950	1,945
	Other	10	10	5	10	15	10
Offer rate	Asian	50.0%	43.3%	41.7%	43.8%	40.4%	29.2%
	Black	36.6%	32.4%	36.8%	31.6%	37.2%	31.2%
	Mixed	50.8%	63.0%	63.3%	61.3%	54.8%	60.9%
	White	64.8%	57.9%	60.3%	61.5%	58.2%	60.8%
	Other	63.2%	100.0%	33.3%	45.0%	56.0%	44.4%

Technical Notes and Definitions

UCAS undergraduate scheme

Adjustment

Adjustment allows applicants who have met and exceeded the terms of their conditional firm offer to seek and find a place at another provider whilst keeping their place at their original firm choice provider.

Clearing

Clearing is a route for applicants that are not placed and holding no offers to find a place on courses with vacancies.

Cycle year

The UCAS application cycle which runs from September to October the following year. For example the 2015 cycle runs from September 2014 through to October 2015.

End of cycle

The point in the cycle to which the numbers in this report refer, and the point at which the cycle is closed such that no more applications or offers can be made, and no more applicants can be placed. Numbers reported at the end of cycle exclude information on a small number of applicants who cancelled during the cycle.

Extra

Applicants who are unsuccessful in obtaining an offer or decline all offers may be eligible to apply through Extra, where they can apply to one further course at a time. Extra operates from 25 February until early July. It provides applicants who are eligible the possibility of obtaining an offer before exam results are published and Clearing starts.

June 30 deadline

The deadline for main scheme applications. Applicants who apply after this date will go directly into Clearing.

Record of Prior Acceptance (RPA)

RPA is an acceptance route used when a provider informs UCAS of applicants it has accepted outside of the normal application process (e.g. individuals who have applied directly to the provider).

Reporting groups

Ethnic group

High level grouping of ethnic origin as declared by the applicant: 'White', 'Black', 'Asian', 'Mixed', 'Other', 'Unknown'. Applicants who declare themselves as 'Unknown' ethnic origin are not reported in these tables, but are included in the associated csv data file.

POLAR3 quintile

Developed by HEFCE, POLAR3 classifies small areas across the UK into five groups according to their level of young participation in Higher Education. Each of these groups represents around 20 per cent of young people and is ranked from Quintile 1 (areas with the lowest young participation rates, considered as the most disadvantaged) to Quintile 5 (highest young participation rates, considered most advantaged). POLAR3 is based on the participation rates of young people between 2005 and 2009 who entered Higher Education between 2005-06 and 2010-11, therefore is most suitable for applicants aged 19 and under. These groups are assigned using the postcode declared by the applicant at the time of their application. If a UK postcode is invalid, considered unsafe for measurement or there is no link to Census geography possible then the applicant is not assigned to a quintile. Applicants with no POLAR3 quintile are not reported.

Sex

Sex as declared by the applicant.

SIMD quintile

Scottish index of multiple deprivation (SIMD) for 2012 identifies small area concentrations of multiple deprivation across all of Scotland, providing a relative measure of deprivation amongst 6505 small areas (data zones) based on 7 socio-economic domains. These small areas are classified into five groups ranked from Quintile 1 (considered the most deprived) to Quintile 5 (considered least deprived), with equal populations in each quintile. Quintiles are assigned using the postcode declared by the applicant, applicants declaring invalid postcodes are classified as 'Not assigned' and are not reported.

SIMD is only defined for applicants domiciled in Scotland, therefore any applicants domiciled outside of Scotland cannot be assigned to an SIMD quintile and so are not reported for this measure.

SIMD is only reported for providers in Scotland. Application and entry rates by SIMD are reported in the 2015 End of Cycle Report and the 2016 cycle January deadline application rate report.

Statistics reported in the tables

All placed applicants

The number of applicants placed for entry into higher education at the provider through one of their choices, including any choices made through Extra, or via Adjustment, Clearing or RPA.

All placed applicants per 10,000 population

The number of total UK domiciled 18 year old placed applicants for entry into higher education at the provider divided by the number of UK 18 year olds in the population, multiplied by 10,000. This gives the number of 18 year olds, for every 10,000 in the population, that were placed at the provider through one of their choices, including any choices made through Extra, or via Adjustment, Clearing or RPA. It is an alternative way of expressing the entry rate to a provider. By referencing the underlying population this statistic shows how the number of placed applicants is changing in relation to the available pool of potential applicants and so gives the chance that somebody from the group will be placed at a provider.

This statistic is only reported for 18 year olds.

Average offer rate

The offer rate that you might expect if the predicted grades and subject choice of applicants were the only factors that influenced whether an applicant was made an offer by the provider. The average offer rate is calculated by dividing applicants according to their specific combination of grades (for A levels the best three predicted grades are used, for BTECs, International Baccalaureate and Scottish Highers and Advanced Highers, predicted grades along with any grades already achieved upon applying are used) and subject choice. For each combination the number of main scheme offers is divided by the number of main scheme applications, to give an overall offer rate. This is then multiplied by the number of applications made by the group for which the average offer rate is being calculated (for example POLAR3 quintile 1), to give an average number of offers for that group. These average number of offers are then added together across all combinations of predicted grade and subject and divided by the number of main scheme applications from the group to give the average offer rate.

The average offer rate does not attempt to control for any other factors that may play a part in the decision to make an offer, such as the subject of the qualifications studied, their relevance to a course, or the grade in each subject; higher numbers of A levels being studied; the exact profile of grades predicted; personal statements; teacher references; interviews; or any other criteria (such as work experience or portfolios) that may be part of the admissions decision.

This statistic is only reported for 18 year olds.

Contribution of group to the average offer rate

The way in which the average offer rate is defined means that the pattern of application and offers of a group (for example POLAR3 quintile 1) will always contribute, in part, to the average offer rate for that group. When this contribution is large, the average offer rate will mainly reflect the patterns for the group, meaning that the value of the average offer rate will be similar to the offer rate, the percentage point difference statistic will be small, and any real difference between the offer rate and what might be expected given the predicted grades and subject choices of the applicants will be difficult to detect.

Values of the contribution of group to the average offer rate range between 0 and 1. The closer the value is to 1 the greater the contribution a group makes to its own average offer rate.

This statistic is only reported for 18 year olds.

Placed June deadline applicants

An applicant who has been placed for entry into higher education at the provider through a June deadline application.

Placed June deadline applicants per 10,000 population

The number of UK domiciled 18 year old placed June deadline applicants at the provider divided by the number of UK 18 year olds in the population, multiplied by 10,000. This gives the number of 18 year olds, for every 10,000 in the population, that were placed at the provider through one of their June deadline applications. It is an alternative way of expressing the entry rate to a provider, but for placed June deadline applicants only. By referencing the underlying population this statistic shows how the number of placed June deadline applicants is changing in relation to the available pool of potential 18 year old applicants and so gives the chance that somebody from the group will be placed at a provider through a June deadline application.

This statistic is only reported for 18 year olds.

June deadline applications

An application (or choice) to a course in higher education to the provider that is made by the June 30 deadline. Each applicant can make up to five choices this way. The number of June deadline applications does not include choices made through the following routes: Clearing, Extra, Adjustment and RPAs. Applications made to October deadline courses received after the October deadline are not included in these statistics.

June deadline applicants

The number of applicants that made at least one application to the provider by the June 30 deadline.

June deadline applicants per 10,000 population

The number of UK domiciled 18 year old June deadline applicants to the provider divided by the number of UK 18 year olds in the population, multiplied by 10,000. This gives the number of 18 year olds, for every 10,000 in the population, who applied by the June 30 deadline. It is equivalent to the application rate. By referencing the underlying population this statistic shows how the number of June deadline applicants is changing in relation to the available pool of potential 18 year old applicants and so gives the chance that somebody from the group will apply to a provider by the June 30 deadline.

This statistic is only reported for 18 year olds.

Offers

An offer is defined as a provider's decision in response to an application to offer a place to an applicant, often subject to the applicant satisfying academic and/or other criteria, via a June deadline application (i.e. does not cover choices made through the following routes: Clearing, Extra, Adjustment and RPAs).

Offer rate

The number of offers made divided by the number of June deadline applications. This gives the proportion of all June deadline applications to the provider that received an offer.

Percentage point difference between offer rate and average offer rate

The offer rate minus the average offer rate.

The percentage point difference can be compared to the expected range of statistical variation resulting from the calculation of the average offer rate using the Average Offer Rate Lookup Table. Where the value of the percentage point difference lies outside of this range, the percentage point difference may be considered to represent a real difference between the offer rate and the average offer rate.

Other definitions

Age

This analysis uses country-specific age definitions that align with the cut off points for school and college cohorts within the different administrations of the UK. For England and Wales, ages are defined on the 31 August, for Northern Ireland on the 1 July and for Scotland on the 28 February the following year. Defining ages in this way matches the assignment of children to school cohorts. For applicants outside of the UK a cohort cut off of 31 August has been used.

Provider

A higher education provider - a university or college.

UK domiciled

Declared area of permanent residence within England, Northern Ireland, Scotland and Wales. Applicants from the Channel Islands and Isle of Man are not included.