

S36 University of St Andrews

Cycle years: 2010 - 2015

Cycle Reference Point: End of Cycle

Applicant coverage: UK domiciled

Reporting groups: Sex, POLAR3, SIMD, ethnic group

Applicant statistics: June deadline applicants, placed June deadline applicants, all placed applicants, June deadline applicants per 10,000 population, placed June deadline applicants per 10,000 population, all placed applicants per 10,000 population

Application statistics: June deadline applications, offers, offer rate, average offer rate, percentage point difference between offer rate and average offer rate, contribution of group to the average offer rate

Non-disclosure controls: To avoid the disclosure of information about any individual the following measures are taken

- Applicants, placed applicants, applications and offers are rounded to the nearest 5.
- Applicants/placed applicants per 10,000 population figures are reported as 0 if the applicant/placed applicant figures are rounded to 0.
- All statistics related to the offer rate are not reported when the number of applications for a group is less than 10. The percentage point difference between the offer rate and the average offer rate is not reported when the number of applications for a group is less than 50.
- Offer rates are reported as 0% if there are fewer than 5 offers, and 100% if the number of offers is within 5 of the number of applications. When the offer rate is reported as 0% or 100%, it is reported in italics.

Contents:

18 year old applicants:	P.1
18 year old applications:	P.2
18 year old applicants by sex:	P.3
18 year old applications by sex:	P.4
18 year old applicants by POLAR3 quintile:	P.7
18 year old applications by POLAR3 quintile:	P.8
18 year old, Scotland domiciled applicants by SIMD quintile:	P.11
18 year old, Scotland domiciled applications by SIMD quintile:	P.12
18 year old applicants by ethnic group:	P.15
18 year old applications by ethnic group:	P.16
Applicants (all ages):	P.19
Applications (all ages):	P.20
Applicants (all ages) by sex:	P.21
Applications (all ages) by sex:	P.22
Applicants (all ages) by POLAR3 quintile:	P.23
Applications (all ages) by POLAR3 quintile:	P.24
Scotland domiciled applicants (all ages) by SIMD quintile:	P.25
Scotland domiciled applications (all ages) by SIMD quintile:	P.26
Applicants (all ages) by ethnic group:	P.27
Applications (all ages) by ethnic group:	P.28

P.1 18 year old applicants

Statistic	2010	2011	2012	2013	2014	2015
June deadline applicants	6,025	4,820	5,610	5,835	5,735	5,740
Placed June deadline applicants	760	660	720	825	1,055	800
All placed applicants	765	665	725	830	1,060	800
June deadline applicants per 10,000 population	76.3	62.6	72.5	76.7	76.1	74.9
Placed June deadline applicants per 10,000	9.6	8.6	9.3	10.8	14.0	10.5
All placed applicants per 10,000 population	9.7	8.6	9.3	10.9	14.1	10.5

P.2 18 year old applications

Statistic	2010	2011	2012	2013	2014	2015
June deadline applications	6,315	5,035	5,800	6,010	5,925	5,950
Offers	2,410	1,840	2,195	2,865	3,775	3,105
Offer rate	38.2%	36.6%	37.8%	47.7%	63.7%	52.2%

P.3 18 year old applicants by sex

Statistic	Sex	2010	2011	2012	2013	2014	2015
June deadline applicants	Men	2,810	2,200	2,530	2,660	2,490	2,625
	Women	3,215	2,620	3,080	3,175	3,245	3,115
Placed June deadline applicants	Men	350	295	295	320	415	345
	Women	410	365	430	500	640	455
All placed applicants	Men	355	295	295	320	420	350
	Women	410	370	430	505	640	455
June deadline applicants per 10,000 population	Men	70.0	56.0	63.8	68.1	64.3	66.9
	Women	82.9	69.5	81.7	85.7	88.6	83.3
Placed June deadline applicants per 10,000 population	Men	8.7	7.5	7.4	8.2	10.8	8.8
	Women	10.5	9.7	11.4	13.5	17.4	12.1
All placed applicants per 10,000 population	Men	8.8	7.5	7.4	8.2	10.8	8.9
	Women	10.6	9.8	11.4	13.7	17.5	12.1

P.4 18 year old applications by sex

Statistic	Sex	2010	2011	2012	2013	2014	2015
June deadline applications	Men	2,945	2,300	2,620	2,740	2,565	2,725
	Women	3,365	2,730	3,180	3,265	3,360	3,225
Offers	Men	1,095	825	890	1,190	1,540	1,390
	Women	1,315	1,015	1,305	1,670	2,235	1,715
Offer rate	Men	37.2%	35.8%	34.0%	43.5%	60.0%	51.1%
	Women	39.1%	37.2%	41.0%	51.2%	66.5%	53.2%
Average offer rate	Men	38.0%	37.7%	36.1%	45.2%	61.9%	52.3%
	Women	38.4%	35.6%	39.2%	49.7%	65.0%	52.1%
Percentage point difference between offer rate and average offer rate	Men	-0.8	-1.9	-2.2	-1.8	-1.9	-1.2
	Women	0.7	1.6	1.8	1.5	1.4	1.0
Contribution of group to the average offer rate	Men	0.569	0.569	0.571	0.584	0.556	0.582
	Women	0.622	0.637	0.647	0.651	0.661	0.646

P.5 18 year old offer rate by sex

Note: The line for a group is not plotted when that group made fewer than 10 applications in any of the years from 2010-2015.

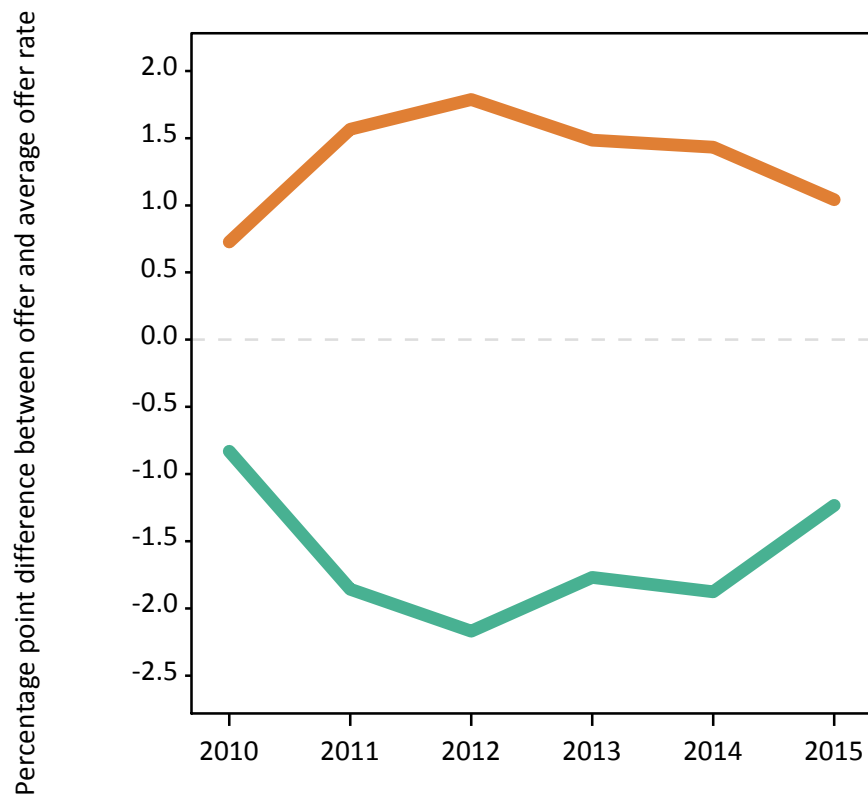
Men
Women



P.6 Percentage point difference between 18 year old offer rate and average offer rate by sex

Note: The line for a group is not plotted when that group made fewer than 50 applications in any of the years from 2010-2015.

Men
Women



P.7 18 year old applicants by POLAR3 quintile

Statistic	POLAR3 quintile	2010	2011	2012	2013	2014	2015
June deadline applicants	Quintile 1	250	180	190	195	215	210
	Quintile 2	420	395	390	455	430	485
	Quintile 3	795	615	690	760	720	735
	Quintile 4	1,360	1,100	1,350	1,270	1,290	1,310
	Quintile 5	3,195	2,525	2,970	3,135	3,060	2,975
Placed June deadline applicants	Quintile 1	20	15	25	30	30	30
	Quintile 2	35	40	35	65	70	50
	Quintile 3	115	80	70	100	115	105
	Quintile 4	175	155	180	150	225	180
	Quintile 5	415	370	410	470	610	435
All placed applicants	Quintile 1	20	15	25	30	30	30
	Quintile 2	35	40	40	65	70	50
	Quintile 3	115	80	70	100	115	105
	Quintile 4	175	155	180	150	225	180
	Quintile 5	415	370	410	475	615	440
June deadline applicants per 10,000 population	Quintile 1	16.8	12.5	13.3	14.1	15.5	14.9
	Quintile 2	27.2	26.3	26.0	30.9	29.3	32.7
	Quintile 3	50.0	40.0	44.7	50.0	47.9	48.0
	Quintile 4	85.3	70.1	85.2	81.1	83.6	83.7
	Quintile 5	188.5	152.5	176.7	189.5	187.7	177.8
Placed June deadline applicants per 10,000 population	Quintile 1	1.4	1.0	1.6	2.2	2.2	2.1
	Quintile 2	2.3	2.5	2.5	4.5	4.6	3.4
	Quintile 3	7.2	5.3	4.6	6.6	7.8	6.8
	Quintile 4	10.9	9.8	11.3	9.7	14.6	11.4
	Quintile 5	24.5	22.5	24.3	28.5	37.5	26.1
All placed applicants per 10,000 population	Quintile 1	1.4	1.0	1.6	2.2	2.2	2.1
	Quintile 2	2.3	2.5	2.5	4.5	4.6	3.4
	Quintile 3	7.3	5.3	4.7	6.6	7.8	6.8
	Quintile 4	11.0	10.0	11.3	9.7	14.7	11.4
	Quintile 5	24.6	22.5	24.3	28.7	37.6	26.2

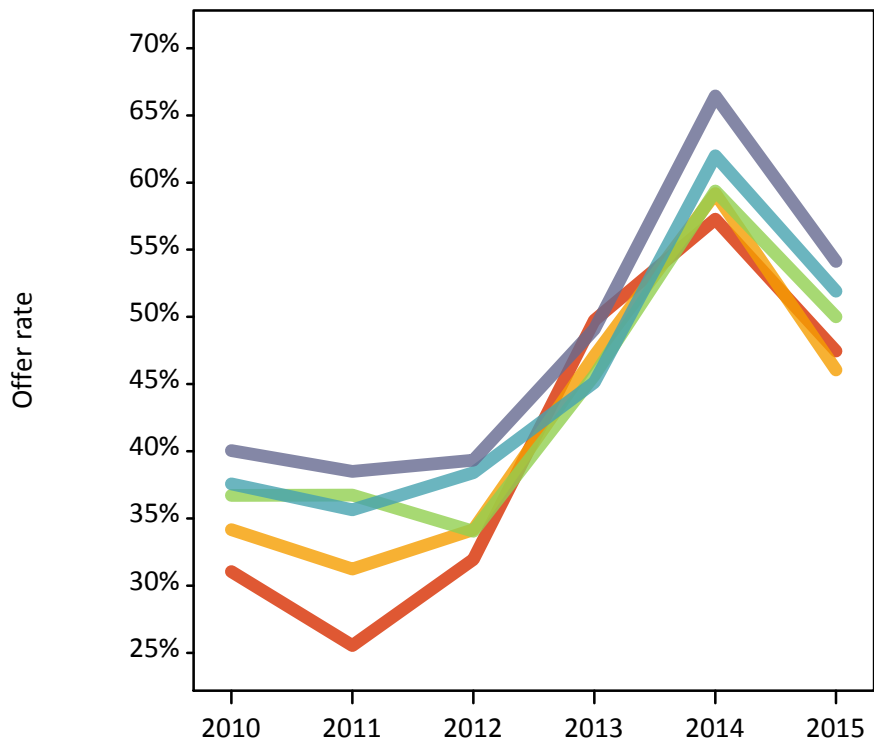
P.8 18 year old applications by POLAR3 quintile

Statistic	POLAR3 quintile	2010	2011	2012	2013	2014	2015
June deadline applications	Quintile 1	260	185	195	200	220	215
	Quintile 2	435	415	400	465	440	505
	Quintile 3	830	645	710	780	745	765
	Quintile 4	1,425	1,140	1,395	1,310	1,330	1,350
	Quintile 5	3,350	2,640	3,080	3,235	3,170	3,090
Offers	Quintile 1	80	45	60	100	125	105
	Quintile 2	150	130	135	220	260	235
	Quintile 3	305	235	240	355	445	385
	Quintile 4	535	405	535	590	825	700
	Quintile 5	1,340	1,015	1,210	1,585	2,105	1,670
Offer rate	Quintile 1	31.0%	25.5%	32.0%	49.8%	57.3%	47.5%
	Quintile 2	34.2%	31.2%	34.2%	47.1%	59.2%	46.0%
	Quintile 3	36.7%	36.7%	34.0%	45.7%	59.4%	50.0%
	Quintile 4	37.6%	35.6%	38.4%	45.1%	62.0%	51.9%
	Quintile 5	40.0%	38.5%	39.3%	49.1%	66.5%	54.1%
Average offer rate	Quintile 1	36.8%	30.2%	32.1%	46.9%	57.5%	52.4%
	Quintile 2	37.2%	35.5%	35.6%	47.6%	60.7%	46.9%
	Quintile 3	36.7%	36.3%	36.5%	47.0%	61.7%	50.6%
	Quintile 4	37.7%	37.0%	38.7%	46.6%	63.3%	52.9%
	Quintile 5	39.2%	37.1%	38.4%	48.3%	65.1%	53.0%
Percentage point difference between offer rate and average offer rate	Quintile 1	-5.7	-4.6	-0.2	2.9	-0.2	-4.9
	Quintile 2	-3.1	-4.3	-1.4	-0.5	-1.5	-0.9
	Quintile 3	0.0	0.4	-2.5	-1.3	-2.3	-0.6
	Quintile 4	-0.1	-1.3	-0.3	-1.5	-1.3	-1.0
	Quintile 5	0.9	1.5	0.9	0.8	1.3	1.1
Contribution of group to the average offer rate	Quintile 1	0.181	0.181	0.140	0.155	0.172	0.143
	Quintile 2	0.173	0.199	0.182	0.169	0.184	0.207
	Quintile 3	0.204	0.234	0.215	0.212	0.208	0.226
	Quintile 4	0.303	0.307	0.312	0.292	0.296	0.298
	Quintile 5	0.581	0.586	0.588	0.592	0.586	0.575

P.9 18 year old offer rate by POLAR3 quintile

Note: The line for a group is not plotted when that group made fewer than 10 applications in any of the years from 2010-2015.

- Quintile 1
- Quintile 2
- Quintile 3
- Quintile 4
- Quintile 5



P.10 Percentage point difference between 18 year old offer rate and average offer rate by POLAR3 quintile

Note: The line for a group is not plotted when that group made fewer than 50 applications in any of the years from 2010-2015.

- Quintile 1
- Quintile 2
- Quintile 3
- Quintile 4
- Quintile 5



P.11 18 year old, Scotland domiciled applicants by SIMD quintile

Statistic	SIMD quintile	2010	2011	2012	2013	2014	2015
June deadline applicants	Quintile 1	85	85	70	110	120	120
	Quintile 2	165	155	190	200	205	235
	Quintile 3	330	305	340	325	390	385
	Quintile 4	505	460	520	585	560	600
	Quintile 5	935	815	950	990	940	975
Placed June deadline applicants	Quintile 1	10	10	10	20	25	15
	Quintile 2	35	15	20	30	50	45
	Quintile 3	50	50	35	45	85	60
	Quintile 4	95	95	80	100	140	95
	Quintile 5	160	180	160	210	245	155
All placed applicants	Quintile 1	10	10	15	20	25	15
	Quintile 2	35	20	20	30	50	45
	Quintile 3	55	50	35	45	85	60
	Quintile 4	95	95	80	100	140	95
	Quintile 5	160	180	160	210	245	155
June deadline applicants per 10,000 population	Quintile 1	63.3	62.2	55.1	83.9	91.5	94.1
	Quintile 2	133.6	129.9	160.6	169.0	175.8	206.1
	Quintile 3	266.5	249.3	283.0	271.2	329.4	332.9
	Quintile 4	405.4	370.1	418.4	471.7	450.9	487.8
	Quintile 5	722.0	640.4	753.4	792.8	758.0	799.2
Placed June deadline applicants per 10,000 population	Quintile 1	6.6	9.0	9.2	15.3	19.1	13.3
	Quintile 2	26.6	14.2	18.7	25.6	43.1	39.6
	Quintile 3	41.9	39.1	30.6	37.8	70.3	50.0
	Quintile 4	75.2	76.1	63.6	80.8	112.3	79.1
	Quintile 5	125.2	141.3	127.8	167.7	198.0	128.6
All placed applicants per 10,000 population	Quintile 1	7.4	9.0	10.0	15.3	19.1	13.3
	Quintile 2	26.6	15.0	18.7	25.6	43.1	39.6
	Quintile 3	42.7	39.9	30.6	37.8	70.3	50.0
	Quintile 4	76.0	76.1	63.6	80.8	113.1	79.1
	Quintile 5	125.2	141.3	127.8	170.1	198.8	128.6

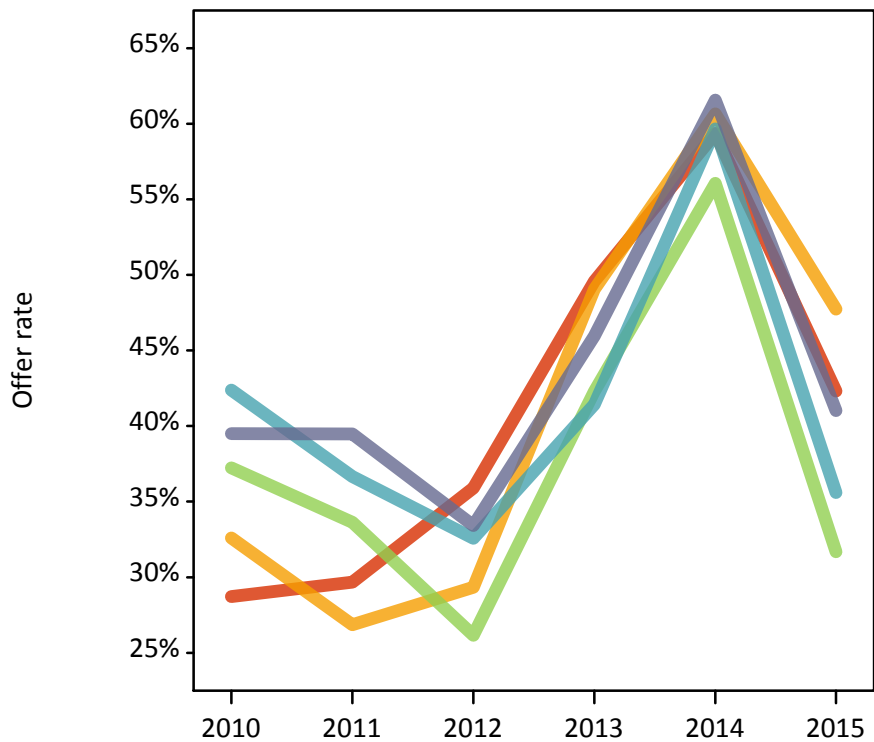
P.12 18 year old, Scotland domiciled applications by SIMD quintile

Statistic	SIMD quintile	2010	2011	2012	2013	2014	2015
June deadline applications	Quintile 1	95	90	80	120	130	130
	Quintile 2	180	175	210	210	215	245
	Quintile 3	370	325	365	350	410	425
	Quintile 4	555	510	570	620	595	645
	Quintile 5	1,035	890	1,015	1,050	1,000	1,040
Offers	Quintile 1	25	25	30	60	75	55
	Quintile 2	60	45	60	105	130	115
	Quintile 3	135	110	95	150	230	135
	Quintile 4	235	185	185	255	355	230
	Quintile 5	410	350	340	480	615	425
Offer rate	Quintile 1	28.7%	29.7%	35.9%	49.6%	59.4%	42.3%
	Quintile 2	32.6%	26.9%	29.3%	49.0%	60.6%	47.7%
	Quintile 3	37.2%	33.6%	26.2%	42.3%	56.1%	31.7%
	Quintile 4	42.4%	36.7%	32.6%	41.4%	59.7%	35.6%
	Quintile 5	39.5%	39.5%	33.4%	45.9%	61.6%	41.0%
Average offer rate	Quintile 1	37.6%	33.5%	30.0%	42.8%	59.3%	36.9%
	Quintile 2	38.1%	33.7%	31.3%	43.4%	55.7%	40.5%
	Quintile 3	37.8%	33.9%	30.7%	44.5%	59.0%	38.1%
	Quintile 4	39.7%	37.8%	32.7%	44.8%	60.5%	38.9%
	Quintile 5	39.0%	37.0%	31.8%	45.1%	60.9%	38.7%
Percentage point difference between offer rate and average offer rate	Quintile 1	-8.9	-3.8	5.9	6.8	0.0	5.4
	Quintile 2	-5.5	-6.9	-1.9	5.6	5.0	7.2
	Quintile 3	-0.6	-0.3	-4.5	-2.2	-3.0	-6.4
	Quintile 4	2.7	-1.1	-0.1	-3.4	-0.9	-3.3
	Quintile 5	0.5	2.5	1.6	0.8	0.7	2.3
Contribution of group to the average offer rate	Quintile 1	0.111	0.136	0.130	0.105	0.114	0.132
	Quintile 2	0.153	0.175	0.151	0.170	0.158	0.142
	Quintile 3	0.234	0.246	0.225	0.224	0.228	0.240
	Quintile 4	0.307	0.316	0.307	0.310	0.307	0.310
	Quintile 5	0.502	0.499	0.500	0.491	0.468	0.468

P.13 18 year old, Scotland domiciled offer rate by SIMD quintile

Note: The line for a group is not plotted when that group made fewer than 10 applications in any of the years from 2010-2015.

- Quintile 1
- Quintile 2
- Quintile 3
- Quintile 4
- Quintile 5



P.14 Percentage point difference between 18 year old, Scotland domiciled offer rate and average offer rate by SIMD quintile

Note: The line for a group is not plotted when that group made fewer than 50 applications in any of the years from 2010-2015.

- Quintile 1
- Quintile 2
- Quintile 3
- Quintile 4
- Quintile 5



P.15 18 year old applicants by ethnic group

Statistic	Ethnic group	2010	2011	2012	2013	2014	2015
June deadline applicants	Asian	235	165	240	255	270	260
	Black	40	35	35	65	60	65
	Mixed	185	145	210	215	230	245
	White	5,470	4,390	5,050	5,210	5,090	5,075
	Other	30	20	30	40	35	25
Placed June deadline applicants	Asian	20	10	25	30	30	20
	Black	5	5	0	10	5	0
	Mixed	15	15	15	35	30	30
	White	710	625	670	740	975	740
	Other	0	0	5	5	5	0
All placed applicants	Asian	20	10	25	30	30	20
	Black	5	5	0	10	10	0
	Mixed	15	15	15	35	30	30
	White	715	625	670	745	980	740
	Other	0	0	5	5	5	0
June deadline applicants per 10,000 population	Asian	38.0	26.5	37.2	39.0	40.1	37.0
	Black	14.9	13.5	13.1	21.6	19.1	20.4
	Mixed	80.3	60.7	81.4	80.3	79.2	80.1
	White	81.6	67.8	78.2	82.8	82.5	81.4
	Other	36.4	27.2	35.0	43.0	39.8	28.0
Placed June deadline applicants per 10,000 population	Asian	3.2	1.9	3.9	4.4	4.4	3.0
	Black	1.5	1.5	0.0	3.7	2.3	0.0
	Mixed	6.5	6.2	5.8	12.9	10.8	9.1
	White	10.6	9.6	10.4	11.8	15.8	11.9
	Other	0.0	0.0	4.5	3.3	5.4	0.0
All placed applicants per 10,000 population	Asian	3.4	1.9	3.9	4.4	4.4	3.0
	Black	1.5	1.5	0.0	3.7	2.6	0.0
	Mixed	6.5	6.2	5.8	12.9	10.8	9.1
	White	10.7	9.7	10.4	11.9	15.9	11.9
	Other	0.0	0.0	4.5	4.4	5.4	0.0

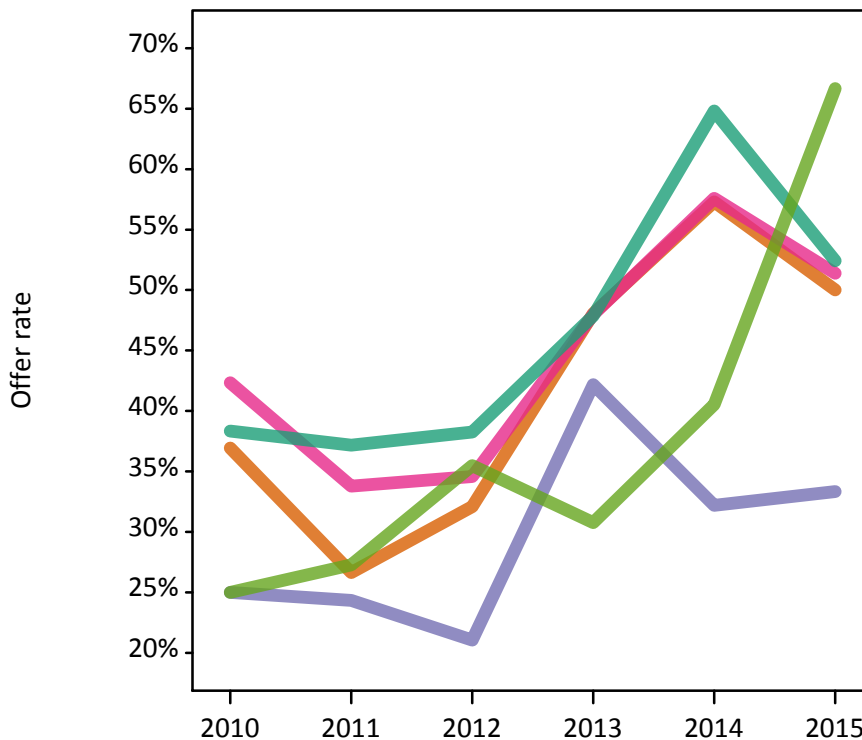
P.16 18 year old applications by ethnic group

Statistic	Ethnic group	2010	2011	2012	2013	2014	2015
June deadline applications	Asian	240	170	245	260	275	265
	Black	40	35	40	65	60	65
	Mixed	190	150	215	220	230	250
	White	5,745	4,595	5,235	5,375	5,275	5,275
	Other	30	20	30	40	35	25
Offers	Asian	90	45	80	125	155	130
	Black	10	10	10	25	20	20
	Mixed	80	50	75	105	135	130
	White	2,205	1,710	2,005	2,575	3,420	2,765
	Other	5	5	10	10	15	20
Offer rate	Asian	36.9%	26.6%	32.1%	48.1%	57.3%	50.0%
	Black	25.0%	24.3%	21.1%	42.2%	32.2%	33.3%
	Mixed	42.3%	33.8%	34.6%	48.0%	57.6%	51.4%
	White	38.3%	37.2%	38.3%	47.9%	64.8%	52.4%
	Other	25.0%	27.3%	35.5%	30.8%	40.5%	66.7%
Average offer rate	Asian	35.8%	31.9%	31.8%	45.4%	54.3%	52.5%
	Black	20.1%	20.2%	27.1%	43.3%	41.3%	40.2%
	Mixed	41.2%	33.9%	37.6%	46.7%	62.5%	53.7%
	White	38.4%	37.0%	38.2%	48.0%	64.5%	52.1%
	Other	22.3%	22.4%	26.8%	30.6%	47.8%	57.4%
Percentage point difference between offer rate and average offer rate	Asian	1.1	-5.3	0.3	2.7	3.0	-2.5
	Black	N/A	N/A	N/A	-1.2	-9.1	-6.9
	Mixed	1.1	-0.1	-3.0	1.3	-5.0	-2.4
	White	-0.1	0.1	0.1	-0.1	0.3	0.3
	Other	N/A	N/A	N/A	N/A	N/A	N/A
Contribution of group to the average offer rate	Asian	0.159	0.147	0.160	0.177	0.196	0.176
	Black	0.145	0.271	0.178	0.166	0.268	0.267
	Mixed	0.125	0.191	0.137	0.161	0.157	0.181
	White	0.923	0.927	0.915	0.912	0.909	0.905
	Other	0.228	0.096	0.129	0.135	0.118	0.070

P.17 18 year old offer rate by ethnic group

Note: The line for a group is not plotted when that group made fewer than 10 applications in any of the years from 2010-2015.

- Asian
- Black
- Mixed
- White
- Other



P.18 Percentage point difference between 18 year old offer rate and average offer rate by ethnic group

Note: The line for a group is not plotted when that group made fewer than 50 applications in any of the years from 2010-2015.

- Asian
- Black
- Mixed
- White
- Other



P.19 Applicants (all ages)

Statistic	2010	2011	2012	2013	2014	2015
June deadline applicants	8,000	6,715	7,465	7,870	7,710	7,685
Placed June deadline applicants	1,005	900	930	1,085	1,400	1,015
All placed applicants	1,010	905	930	1,095	1,405	1,020

P.20 Applications (all ages)

Statistic	2010	2011	2012	2013	2014	2015
June deadline applications	8,430	7,030	7,780	8,145	8,010	8,005
Offers	3,010	2,395	2,705	3,575	4,765	3,825
Offer rate	35.7%	34.1%	34.8%	43.9%	59.5%	47.8%

P.21 Applicants (all ages) by sex

Statistic	Sex	2010	2011	2012	2013	2014	2015
June deadline applicants	Men	3,775	3,145	3,445	3,670	3,445	3,560
	Women	4,225	3,565	4,020	4,200	4,265	4,125
Placed June deadline applicants	Men	455	405	400	440	570	440
	Women	550	495	530	650	830	580
All placed applicants	Men	460	405	400	440	575	440
	Women	555	500	530	655	830	580

P.22 Applications (all ages) by sex

Statistic	Sex	2010	2011	2012	2013	2014	2015
June deadline applications	Men	3,970	3,290	3,590	3,805	3,575	3,710
	Women	4,460	3,740	4,190	4,340	4,440	4,295
Offers	Men	1,370	1,075	1,140	1,525	1,965	1,710
	Women	1,645	1,325	1,565	2,050	2,800	2,115
Offer rate	Men	34.5%	32.6%	31.7%	40.0%	55.0%	46.2%
	Women	36.8%	35.4%	37.4%	47.3%	63.1%	49.2%

P.23 Applicants (all ages) by POLAR3 quintile

Statistic	POLAR3 quintile	2010	2011	2012	2013	2014	2015
June deadline applicants	Quintile 1	340	270	275	295	300	310
	Quintile 2	580	535	550	630	600	635
	Quintile 3	1,060	885	955	1,050	985	1,015
	Quintile 4	1,820	1,555	1,765	1,750	1,780	1,770
	Quintile 5	4,170	3,440	3,875	4,115	4,020	3,925
Placed June deadline applicants	Quintile 1	25	20	30	35	40	35
	Quintile 2	55	45	50	90	95	65
	Quintile 3	150	110	95	145	155	130
	Quintile 4	225	220	230	210	315	230
	Quintile 5	545	505	515	600	785	560
All placed applicants	Quintile 1	25	20	30	35	40	35
	Quintile 2	55	45	55	90	95	65
	Quintile 3	150	110	95	145	155	130
	Quintile 4	230	220	230	210	320	230
	Quintile 5	550	505	515	605	790	560

P.24 Applications (all ages) by POLAR3 quintile

Statistic	POLAR3 quintile	2010	2011	2012	2013	2014	2015
June deadline applications	Quintile 1	360	280	285	300	315	325
	Quintile 2	610	560	580	655	615	670
	Quintile 3	1,115	925	995	1,080	1,035	1,055
	Quintile 4	1,935	1,620	1,825	1,820	1,850	1,830
	Quintile 5	4,375	3,615	4,055	4,255	4,170	4,095
Offers	Quintile 1	95	60	75	125	155	130
	Quintile 2	190	155	175	275	325	280
	Quintile 3	365	300	295	455	565	470
	Quintile 4	675	545	660	765	1,075	870
	Quintile 5	1,680	1,330	1,495	1,950	2,625	2,055
Offer rate	Quintile 1	26.3%	21.8%	26.3%	40.7%	49.4%	40.4%
	Quintile 2	31.3%	27.4%	29.8%	41.7%	53.2%	42.1%
	Quintile 3	32.8%	32.4%	29.7%	42.2%	54.4%	44.7%
	Quintile 4	35.0%	33.7%	36.0%	42.0%	58.0%	47.6%
	Quintile 5	38.4%	36.8%	36.9%	45.8%	63.0%	50.2%

P.25 Scotland domiciled applicants (all ages) by SIMD quintile

Statistic	SIMD quintile	2010	2011	2012	2013	2014	2015
June deadline applicants	Quintile 1	155	160	165	215	205	200
	Quintile 2	255	255	295	295	310	335
	Quintile 3	470	435	510	495	560	565
	Quintile 4	705	655	745	795	795	820
	Quintile 5	1,210	1,125	1,290	1,315	1,265	1,295
Placed June deadline applicants	Quintile 1	15	15	15	35	40	25
	Quintile 2	45	25	30	40	65	55
	Quintile 3	75	75	50	60	115	80
	Quintile 4	125	130	105	125	200	120
	Quintile 5	210	230	210	265	320	205
All placed applicants	Quintile 1	15	15	20	35	40	25
	Quintile 2	45	25	30	40	65	55
	Quintile 3	75	75	50	60	115	80
	Quintile 4	125	130	105	125	200	120
	Quintile 5	210	230	210	270	320	205

P.26 Scotland domiciled applications (all ages) by SIMD quintile

Statistic	SIMD quintile	2010	2011	2012	2013	2014	2015
June deadline applications	Quintile 1	180	175	190	235	225	215
	Quintile 2	280	280	330	320	325	355
	Quintile 3	530	470	555	540	605	620
	Quintile 4	790	725	820	845	860	885
	Quintile 5	1,340	1,220	1,390	1,405	1,350	1,395
Offers	Quintile 1	40	40	40	95	105	75
	Quintile 2	80	65	75	130	170	145
	Quintile 3	175	160	125	190	300	185
	Quintile 4	310	250	240	320	475	290
	Quintile 5	515	460	445	595	785	540
Offer rate	Quintile 1	21.2%	22.4%	20.8%	40.5%	46.7%	34.3%
	Quintile 2	28.8%	23.2%	22.6%	41.1%	52.0%	40.5%
	Quintile 3	33.5%	33.5%	22.2%	35.4%	49.6%	29.6%
	Quintile 4	39.1%	34.7%	29.6%	38.0%	54.9%	32.9%
	Quintile 5	38.2%	37.8%	32.1%	42.5%	58.3%	38.6%

P.27 Applicants (all ages) by ethnic group

Statistic	Ethnic group	2010	2011	2012	2013	2014	2015
June deadline applicants	Asian	365	275	385	400	410	390
	Black	85	80	75	100	95	110
	Mixed	275	220	290	295	320	340
	White	7,130	5,990	6,585	6,935	6,760	6,700
	Other	45	40	50	65	55	45
Placed June deadline applicants	Asian	30	25	40	50	45	30
	Black	5	5	5	10	10	0
	Mixed	25	20	25	45	50	35
	White	930	835	840	965	1,285	930
	Other	5	5	10	5	5	5
All placed applicants	Asian	30	25	40	50	45	30
	Black	5	5	5	10	10	0
	Mixed	25	20	25	45	50	35
	White	935	840	840	975	1,285	935
	Other	5	5	10	5	5	5

P.28 Applications (all ages) by ethnic group

Statistic	Ethnic group	2010	2011	2012	2013	2014	2015
June deadline applications	Asian	375	275	390	405	415	400
	Black	90	85	80	105	95	115
	Mixed	285	230	295	305	325	345
	White	7,530	6,295	6,890	7,190	7,050	6,995
	Other	45	40	50	65	55	50
Offers	Asian	115	75	115	180	210	165
	Black	20	15	15	30	25	30
	Mixed	110	75	100	135	190	170
	White	2,725	2,195	2,435	3,180	4,275	3,380
	Other	10	10	20	15	20	25
Offer rate	Asian	30.8%	26.7%	29.6%	44.7%	51.1%	41.2%
	Black	20.2%	16.9%	16.3%	30.8%	26.8%	26.1%
	Mixed	38.2%	32.5%	33.0%	44.7%	57.8%	49.9%
	White	36.2%	34.9%	35.3%	44.2%	60.7%	48.3%
	Other	24.4%	22.0%	36.5%	25.4%	38.9%	55.1%

Technical Notes and Definitions

UCAS undergraduate scheme

Adjustment

Adjustment allows applicants who have met and exceeded the terms of their conditional firm offer to seek and find a place at another provider whilst keeping their place at their original firm choice provider.

Clearing

Clearing is a route for applicants that are not placed and holding no offers to find a place on courses with vacancies.

Cycle year

The UCAS application cycle which runs from September to October the following year. For example the 2015 cycle runs from September 2014 through to October 2015.

End of cycle

The point in the cycle to which the numbers in this report refer, and the point at which the cycle is closed such that no more applications or offers can be made, and no more applicants can be placed. Numbers reported at the end of cycle exclude information on a small number of applicants who cancelled during the cycle.

Extra

Applicants who are unsuccessful in obtaining an offer or decline all offers may be eligible to apply through Extra, where they can apply to one further course at a time. Extra operates from 25 February until early July. It provides applicants who are eligible the possibility of obtaining an offer before exam results are published and Clearing starts.

June 30 deadline

The deadline for main scheme applications. Applicants who apply after this date will go directly into Clearing.

Record of Prior Acceptance (RPA)

RPA is an acceptance route used when a provider informs UCAS of applicants it has accepted outside of the normal application process (e.g. individuals who have applied directly to the provider).

Reporting groups

Ethnic group

High level grouping of ethnic origin as declared by the applicant: 'White', 'Black', 'Asian', 'Mixed', 'Other', 'Unknown'. Applicants who declare themselves as 'Unknown' ethnic origin are not reported in these tables, but are included in the associated csv data file.

POLAR3 quintile

Developed by HEFCE, POLAR3 classifies small areas across the UK into five groups according to their level of young participation in Higher Education. Each of these groups represents around 20 per cent of young people and is ranked from Quintile 1 (areas with the lowest young participation rates, considered as the most disadvantaged) to Quintile 5 (highest young participation rates, considered most advantaged). POLAR3 is based on the participation rates of young people between 2005 and 2009 who entered Higher Education between 2005-06 and 2010-11, therefore is most suitable for applicants aged 19 and under. These groups are assigned using the postcode declared by the applicant at the time of their application. If a UK postcode is invalid, considered unsafe for measurement or there is no link to Census geography possible then the applicant is not assigned to a quintile. Applicants with no POLAR3 quintile are not reported.

Sex

Sex as declared by the applicant.

SIMD quintile

Scottish index of multiple deprivation (SIMD) for 2012 identifies small area concentrations of multiple deprivation across all of Scotland, providing a relative measure of deprivation amongst 6505 small areas (data zones) based on 7 socio-economic domains. These small areas are classified into five groups ranked from Quintile 1 (considered the most deprived) to Quintile 5 (considered least deprived), with equal populations in each quintile. Quintiles are assigned using the postcode declared by the applicant, applicants declaring invalid postcodes are classified as 'Not assigned' and are not reported.

SIMD is only defined for applicants domiciled in Scotland, therefore any applicants domiciled outside of Scotland cannot be assigned to an SIMD quintile and so are not reported for this measure.

SIMD is only reported for providers in Scotland. Application and entry rates by SIMD are reported in the 2015 End of Cycle Report and the 2016 cycle January deadline application rate report.

Statistics reported in the tables

All placed applicants

The number of applicants placed for entry into higher education at the provider through one of their choices, including any choices made through Extra, or via Adjustment, Clearing or RPA.

All placed applicants per 10,000 population

The number of total UK domiciled 18 year old placed applicants for entry into higher education at the provider divided by the number of UK 18 year olds in the population, multiplied by 10,000. This gives the number of 18 year olds, for every 10,000 in the population, that were placed at the provider through one of their choices, including any choices made through Extra, or via Adjustment, Clearing or RPA. It is an alternative way of expressing the entry rate to a provider. By referencing the underlying population this statistic shows how the number of placed applicants is changing in relation to the available pool of potential applicants and so gives the chance that somebody from the group will be placed at a provider.

This statistic is only reported for 18 year olds.

Average offer rate

The offer rate that you might expect if the predicted grades and subject choice of applicants were the only factors that influenced whether an applicant was made an offer by the provider. The average offer rate is calculated by dividing applicants according to their specific combination of grades (for A levels the best three predicted grades are used, for BTECs, International Baccalaureate and Scottish Highers and Advanced Highers, predicted grades along with any grades already achieved upon applying are used) and subject choice. For each combination the number of main scheme offers is divided by the number of main scheme applications, to give an overall offer rate. This is then multiplied by the number of applications made by the group for which the average offer rate is being calculated (for example POLAR3 quintile 1), to give an average number of offers for that group. These average number of offers are then added together across all combinations of predicted grade and subject and divided by the number of main scheme applications from the group to give the average offer rate.

The average offer rate does not attempt to control for any other factors that may play a part in the decision to make an offer, such as the subject of the qualifications studied, their relevance to a course, or the grade in each subject; higher numbers of A levels being studied; the exact profile of grades predicted; personal statements; teacher references; interviews; or any other criteria (such as work experience or portfolios) that may be part of the admissions decision.

This statistic is only reported for 18 year olds.

Contribution of group to the average offer rate

The way in which the average offer rate is defined means that the pattern of application and offers of a group (for example POLAR3 quintile 1) will always contribute, in part, to the average offer rate for that group. When this contribution is large, the average offer rate will mainly reflect the patterns for the group, meaning that the value of the average offer rate will be similar to the offer rate, the percentage point difference statistic will be small, and any real difference between the offer rate and what might be expected given the predicted grades and subject choices of the applicants will be difficult to detect.

Values of the contribution of group to the average offer rate range between 0 and 1. The closer the value is to 1 the greater the contribution a group makes to its own average offer rate.

This statistic is only reported for 18 year olds.

Placed June deadline applicants

An applicant who has been placed for entry into higher education at the provider through a June deadline application.

Placed June deadline applicants per 10,000 population

The number of UK domiciled 18 year old placed June deadline applicants at the provider divided by the number of UK 18 year olds in the population, multiplied by 10,000. This gives the number of 18 year olds, for every 10,000 in the population, that were placed at the provider through one of their June deadline applications. It is an alternative way of expressing the entry rate to a provider, but for placed June deadline applicants only. By referencing the underlying population this statistic shows how the number of placed June deadline applicants is changing in relation to the available pool of potential 18 year old applicants and so gives the chance that somebody from the group will be placed at a provider through a June deadline application.

This statistic is only reported for 18 year olds.

June deadline applications

An application (or choice) to a course in higher education to the provider that is made by the June 30 deadline. Each applicant can make up to five choices this way. The number of June deadline applications does not include choices made through the following routes: Clearing, Extra, Adjustment and RPAs. Applications made to October deadline courses received after the October deadline are not included in these statistics.

June deadline applicants

The number of applicants that made at least one application to the provider by the June 30 deadline.

June deadline applicants per 10,000 population

The number of UK domiciled 18 year old June deadline applicants to the provider divided by the number of UK 18 year olds in the population, multiplied by 10,000. This gives the number of 18 year olds, for every 10,000 in the population, who applied by the June 30 deadline. It is equivalent to the application rate. By referencing the underlying population this statistic shows how the number of June deadline applicants is changing in relation to the available pool of potential 18 year old applicants and so gives the chance that somebody from the group will apply to a provider by the June 30 deadline.

This statistic is only reported for 18 year olds.

Offers

An offer is defined as a provider's decision in response to an application to offer a place to an applicant, often subject to the applicant satisfying academic and/or other criteria, via a June deadline application (i.e. does not cover choices made through the following routes: Clearing, Extra, Adjustment and RPAs).

Offer rate

The number of offers made divided by the number of June deadline applications. This gives the proportion of all June deadline applications to the provider that received an offer.

Percentage point difference between offer rate and average offer rate

The offer rate minus the average offer rate.

The percentage point difference can be compared to the expected range of statistical variation resulting from the calculation of the average offer rate using the Average Offer Rate Lookup Table. Where the value of the percentage point difference lies outside of this range, the percentage point difference may be considered to represent a real difference between the offer rate and the average offer rate.

Other definitions

Age

This analysis uses country-specific age definitions that align with the cut off points for school and college cohorts within the different administrations of the UK. For England and Wales, ages are defined on the 31 August, for Northern Ireland on the 1 July and for Scotland on the 28 February the following year. Defining ages in this way matches the assignment of children to school cohorts. For applicants outside of the UK a cohort cut off of 31 August has been used.

Provider

A higher education provider - a university or college.

UK domiciled

Declared area of permanent residence within England, Northern Ireland, Scotland and Wales. Applicants from the Channel Islands and Isle of Man are not included.