

S30 Southampton Solent University

Cycle years: 2010 - 2015

Cycle Reference Point: End of Cycle

Applicant coverage: UK domiciled

Reporting groups: Sex, POLAR3, ethnic group

Applicant statistics: June deadline applicants, placed June deadline applicants, all placed applicants, June deadline applicants per 10,000 population, placed June deadline applicants per 10,000 population, all placed applicants per 10,000 population

Application statistics: June deadline applications, offers, offer rate, average offer rate, percentage point difference between offer rate and average offer rate, contribution of group to the average offer rate

Non-disclosure controls: To avoid the disclosure of information about any individual the following measures are taken

- Applicants, placed applicants, applications and offers are rounded to the nearest 5.
- Applicants/placed applicants per 10,000 population figures are reported as 0 if the applicant/placed applicant figures are rounded to 0.
- All statistics related to the offer rate are not reported when the number of applications for a group is less than 10. The percentage point difference between the offer rate and the average offer rate is not reported when the number of applications for a group is less than 50.
- Offer rates are reported as 0% if there are fewer than 5 offers, and 100% if the number of offers is within 5 of the number of applications. When the offer rate is reported as 0% or 100%, it is reported in italics.

Contents:

18 year old applicants:	P.1
18 year old applications:	P.2
18 year old applicants by sex:	P.3
18 year old applications by sex:	P.4
18 year old applicants by POLAR3 quintile:	P.7
18 year old applications by POLAR3 quintile:	P.8
18 year old applicants by ethnic group:	P.11
18 year old applications by ethnic group:	P.12
Applicants (all ages):	P.15
Applications (all ages):	P.16
Applicants (all ages) by sex:	P.17
Applications (all ages) by sex:	P.18
Applicants (all ages) by POLAR3 quintile:	P.19
Applications (all ages) by POLAR3 quintile:	P.20
Applicants (all ages) by ethnic group:	P.21
Applications (all ages) by ethnic group:	P.22

P.1 18 year old applicants

Statistic	2010	2011	2012	2013	2014	2015
June deadline applicants	5,815	6,355	5,505	5,345	5,855	6,470
Placed June deadline applicants	1,070	1,420	1,305	1,120	1,270	1,175
All placed applicants	1,250	1,525	1,505	1,285	1,435	1,320
June deadline applicants per 10,000 population	73.6	82.5	71.1	70.3	77.8	84.4
Placed June deadline applicants per 10,000	13.5	18.5	16.9	14.7	16.9	15.3
All placed applicants per 10,000 population	15.8	19.8	19.4	16.9	19.0	17.2

P.2 18 year old applications

Statistic	2010	2011	2012	2013	2014	2015
June deadline applications	6,410	6,985	6,045	5,790	6,475	7,115
Offers	4,990	5,635	4,975	4,895	5,545	5,980
Offer rate	77.8%	80.6%	82.3%	84.5%	85.6%	84.1%

P.3 18 year old applicants by sex

Statistic	Sex	2010	2011	2012	2013	2014	2015
June deadline applicants	Men	2,650	3,045	2,715	2,635	3,070	3,250
	Women	3,165	3,310	2,790	2,710	2,785	3,220
Placed June deadline applicants	Men	490	730	680	620	700	660
	Women	575	695	625	500	570	515
All placed applicants	Men	600	790	790	715	785	745
	Women	650	735	715	570	650	575
June deadline applicants per 10,000 population	Men	66.0	77.4	68.4	67.5	79.3	82.8
	Women	81.5	87.9	74.0	73.2	76.1	86.2
Placed June deadline applicants per 10,000 population	Men	12.2	18.5	17.1	15.9	18.1	16.8
	Women	14.9	18.4	16.6	13.5	15.5	13.7
All placed applicants per 10,000 population	Men	14.9	20.1	19.9	18.3	20.3	19.0
	Women	16.7	19.5	18.9	15.4	17.7	15.4

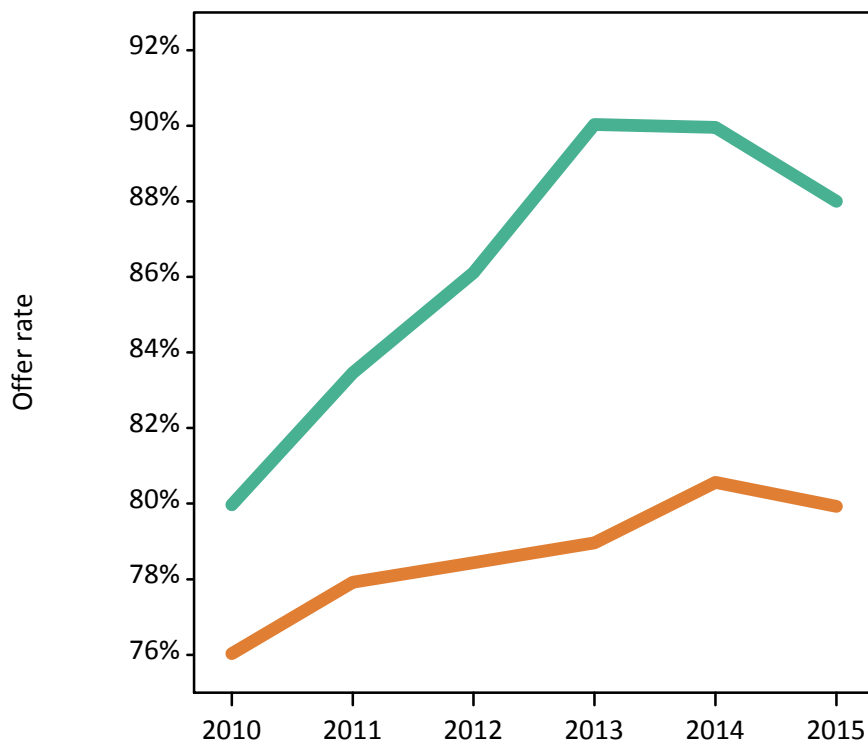
P.4 18 year old applications by sex

Statistic	Sex	2010	2011	2012	2013	2014	2015
June deadline applications	Men	2,945	3,440	3,040	2,910	3,485	3,665
	Women	3,465	3,545	3,005	2,880	2,990	3,445
Offers	Men	2,355	2,870	2,615	2,620	3,135	3,225
	Women	2,635	2,765	2,355	2,275	2,410	2,755
Offer rate	Men	80.0%	83.5%	86.1%	90.0%	90.0%	88.0%
	Women	76.0%	77.9%	78.4%	79.0%	80.6%	79.9%
Average offer rate	Men	79.7%	83.0%	85.7%	89.5%	89.5%	87.9%
	Women	76.2%	78.3%	78.9%	79.5%	81.1%	80.1%
Percentage point difference between offer rate and average offer rate	Men	0.2	0.4	0.4	0.5	0.5	0.1
	Women	-0.2	-0.4	-0.4	-0.5	-0.5	-0.2
Contribution of group to the average offer rate	Men	0.644	0.677	0.686	0.700	0.710	0.695
	Women	0.697	0.687	0.682	0.697	0.662	0.675

P.5 18 year old offer rate by sex

Note: The line for a group is not plotted when that group made fewer than 10 applications in any of the years from 2010-2015.

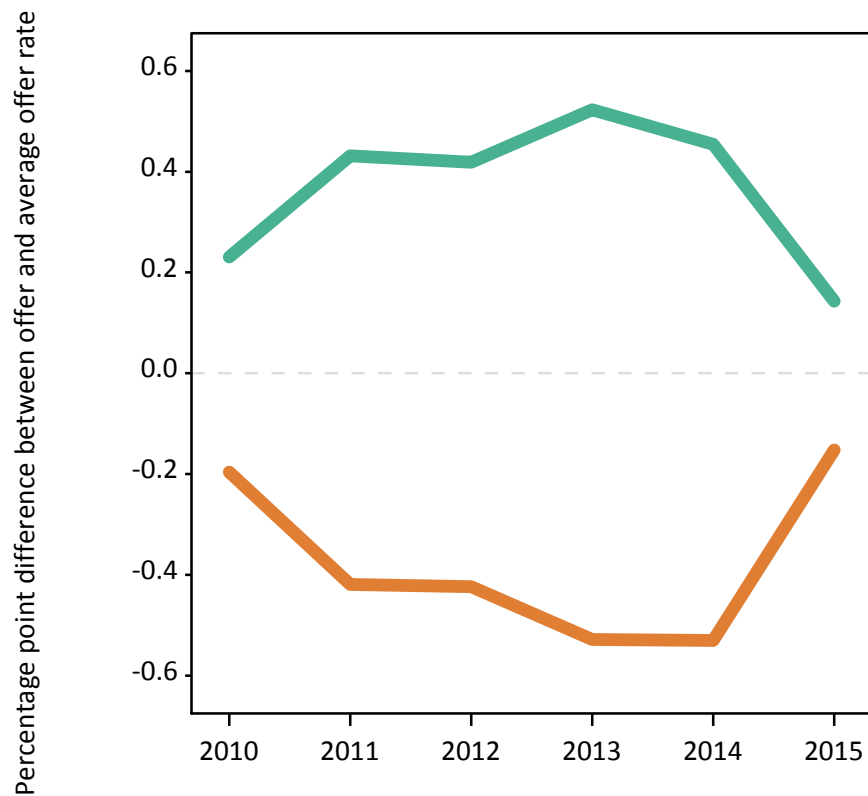
Men
Women



P.6 Percentage point difference between 18 year old offer rate and average offer rate by sex

Note: The line for a group is not plotted when that group made fewer than 50 applications in any of the years from 2010-2015.

Men
Women



P.7 18 year old applicants by POLAR3 quintile

Statistic	POLAR3 quintile	2010	2011	2012	2013	2014	2015
June deadline applicants	Quintile 1	640	715	680	695	735	810
	Quintile 2	950	1,035	890	905	1,035	1,075
	Quintile 3	1,155	1,280	1,150	1,105	1,285	1,375
	Quintile 4	1,480	1,585	1,350	1,275	1,385	1,620
	Quintile 5	1,580	1,730	1,420	1,350	1,405	1,570
Placed June deadline applicants	Quintile 1	120	160	185	155	175	145
	Quintile 2	180	245	230	200	230	210
	Quintile 3	195	275	270	235	275	255
	Quintile 4	265	360	315	270	295	305
	Quintile 5	305	380	310	255	285	255
All placed applicants	Quintile 1	140	165	205	180	200	170
	Quintile 2	210	260	265	225	250	235
	Quintile 3	225	300	310	260	315	280
	Quintile 4	315	380	360	310	340	340
	Quintile 5	350	420	360	305	320	295
June deadline applicants per 10,000 population	Quintile 1	43.2	49.7	47.9	49.9	52.7	58.0
	Quintile 2	61.7	69.0	59.3	61.4	70.7	72.5
	Quintile 3	72.5	83.2	74.6	72.5	85.3	89.6
	Quintile 4	92.8	101.1	85.2	81.5	90.0	103.6
	Quintile 5	93.2	104.5	84.5	81.8	86.3	93.7
Placed June deadline applicants per 10,000 population	Quintile 1	8.1	11.1	12.8	11.1	12.7	10.5
	Quintile 2	11.6	16.3	15.3	13.5	15.9	14.2
	Quintile 3	12.4	18.0	17.4	15.3	18.3	16.5
	Quintile 4	16.7	22.9	19.8	17.3	19.1	19.4
	Quintile 5	17.9	23.0	18.5	15.5	17.6	15.3
All placed applicants per 10,000 population	Quintile 1	9.5	11.3	14.2	12.8	14.5	12.1
	Quintile 2	13.7	17.3	17.8	15.2	17.2	15.7
	Quintile 3	14.2	19.6	20.2	17.0	20.9	18.3
	Quintile 4	19.8	24.3	22.7	19.9	22.1	21.7
	Quintile 5	20.7	25.3	21.5	18.5	19.7	17.5

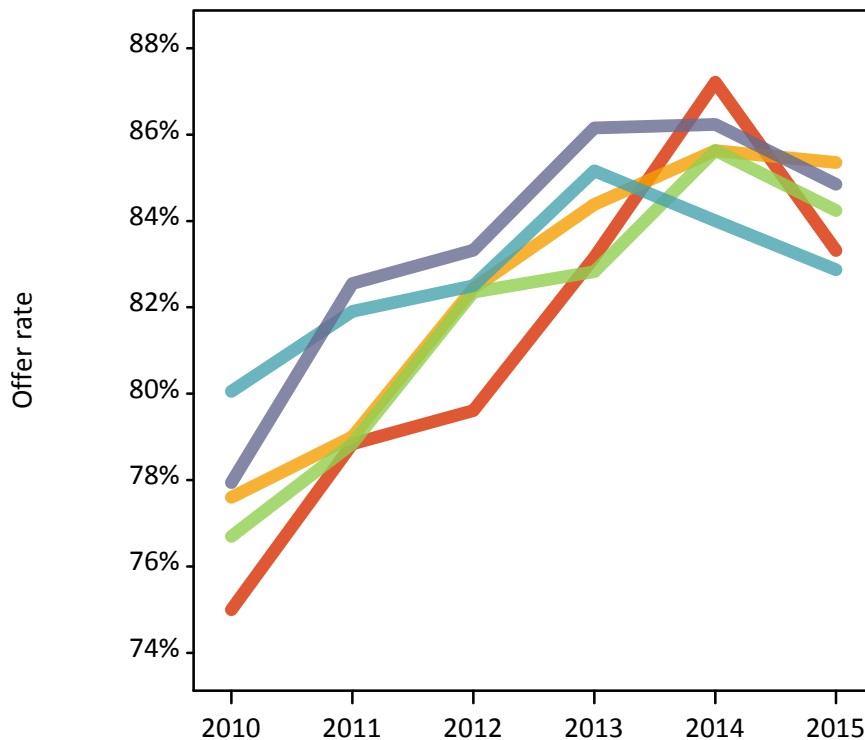
P.8 18 year old applications by POLAR3 quintile

Statistic	POLAR3 quintile	2010	2011	2012	2013	2014	2015
June deadline applications	Quintile 1	710	795	765	765	830	925
	Quintile 2	1,060	1,145	985	985	1,140	1,190
	Quintile 3	1,285	1,405	1,260	1,210	1,425	1,505
	Quintile 4	1,610	1,720	1,480	1,375	1,540	1,765
	Quintile 5	1,730	1,915	1,545	1,435	1,525	1,715
Offers	Quintile 1	535	625	610	635	725	770
	Quintile 2	820	905	810	830	975	1,015
	Quintile 3	985	1,105	1,035	1,005	1,220	1,265
	Quintile 4	1,290	1,410	1,220	1,170	1,290	1,460
	Quintile 5	1,350	1,580	1,290	1,240	1,315	1,455
Offer rate	Quintile 1	75.0%	78.8%	79.6%	83.2%	87.2%	83.3%
	Quintile 2	77.6%	79.0%	82.4%	84.4%	85.6%	85.4%
	Quintile 3	76.7%	78.8%	82.4%	82.8%	85.6%	84.2%
	Quintile 4	80.0%	81.9%	82.5%	85.2%	84.0%	82.9%
	Quintile 5	77.9%	82.5%	83.3%	86.2%	86.2%	84.8%
Average offer rate	Quintile 1	76.6%	80.0%	82.2%	84.0%	86.9%	84.2%
	Quintile 2	77.4%	79.6%	81.5%	83.9%	85.5%	85.0%
	Quintile 3	77.1%	80.5%	82.4%	84.5%	85.7%	84.0%
	Quintile 4	78.7%	81.5%	82.7%	84.4%	85.0%	83.4%
	Quintile 5	78.3%	80.9%	82.4%	85.4%	85.5%	84.3%
Percentage point difference between offer rate and average offer rate	Quintile 1	-1.6	-1.2	-2.6	-0.9	0.3	-0.9
	Quintile 2	0.2	-0.6	0.9	0.5	0.1	0.3
	Quintile 3	-0.4	-1.7	-0.0	-1.6	-0.0	0.2
	Quintile 4	1.3	0.4	-0.2	0.7	-1.0	-0.5
	Quintile 5	-0.4	1.7	0.9	0.8	0.7	0.6
Contribution of group to the average offer rate	Quintile 1	0.206	0.189	0.213	0.223	0.201	0.199
	Quintile 2	0.240	0.237	0.244	0.254	0.252	0.241
	Quintile 3	0.277	0.282	0.282	0.291	0.288	0.275
	Quintile 4	0.320	0.316	0.318	0.325	0.303	0.310
	Quintile 5	0.347	0.345	0.342	0.345	0.321	0.320

P.9 18 year old offer rate by POLAR3 quintile

Note: The line for a group is not plotted when that group made fewer than 10 applications in any of the years from 2010-2015.

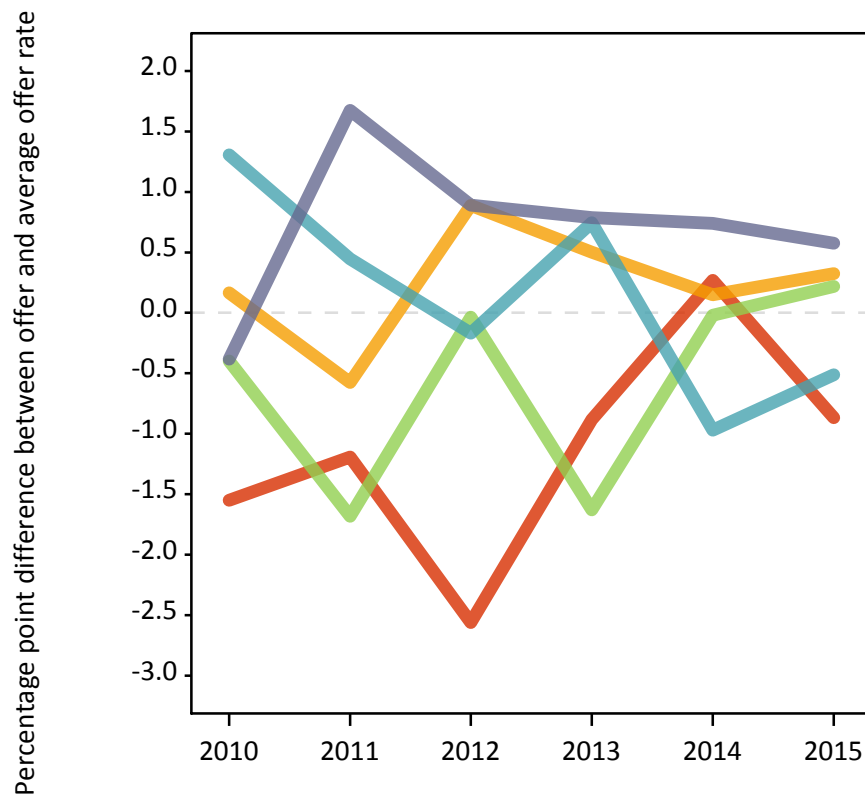
- Quintile 1
- Quintile 2
- Quintile 3
- Quintile 4
- Quintile 5



P.10 Percentage point difference between 18 year old offer rate and average offer rate by POLAR3 quintile

Note: The line for a group is not plotted when that group made fewer than 50 applications in any of the years from 2010-2015.

- Quintile 1
- Quintile 2
- Quintile 3
- Quintile 4
- Quintile 5



P.11 18 year old applicants by ethnic group

Statistic	Ethnic group	2010	2011	2012	2013	2014	2015
June deadline applicants	Asian	165	225	195	215	225	305
	Black	265	340	295	330	385	480
	Mixed	210	250	230	220	250	295
	White	5,115	5,485	4,740	4,530	4,935	5,325
	Other	35	40	35	45	45	45
Placed June deadline applicants	Asian	25	45	30	35	45	40
	Black	40	65	70	75	60	80
	Mixed	45	60	60	40	55	55
	White	950	1,240	1,140	960	1,110	990
	Other	5	10	5	5	5	5
All placed applicants	Asian	45	60	55	45	65	50
	Black	55	75	90	90	75	100
	Mixed	50	65	70	50	60	65
	White	1,090	1,315	1,280	1,085	1,230	1,095
	Other	10	10	10	10	5	5
June deadline applicants per 10,000 population	Asian	27.0	35.5	30.1	32.3	33.2	43.4
	Black	101.2	124.7	105.1	110.5	127.7	150.5
	Mixed	91.1	104.0	88.3	81.4	86.9	96.3
	White	76.3	84.7	73.4	72.0	80.0	85.5
	Other	46.8	50.6	37.3	47.4	49.4	46.7
Placed June deadline applicants per 10,000 population	Asian	3.9	7.5	4.5	5.2	6.5	5.4
	Black	14.9	23.8	24.5	24.9	19.1	25.1
	Mixed	19.4	23.9	22.3	14.8	18.4	17.8
	White	14.2	19.2	17.7	15.3	18.0	15.9
	Other	9.1	9.9	7.9	7.7	4.3	6.2
All placed applicants per 10,000 population	Asian	7.1	9.2	8.3	7.1	9.3	7.3
	Black	20.6	27.4	32.0	30.7	25.1	30.8
	Mixed	21.6	27.2	26.1	17.8	20.2	20.8
	White	16.2	20.3	19.8	17.3	19.9	17.6
	Other	13.0	9.9	9.0	11.0	5.4	7.3

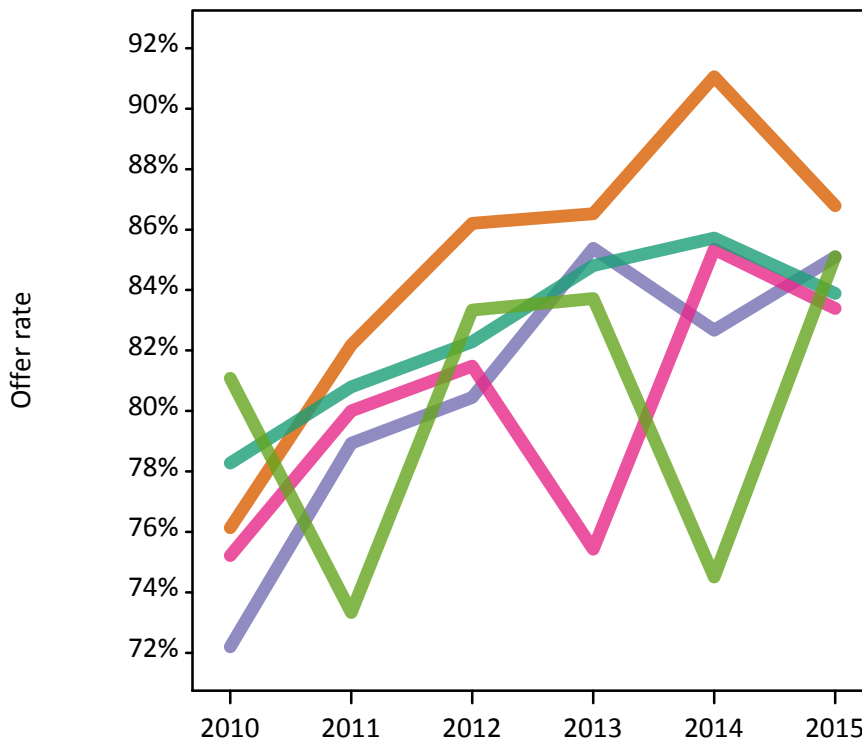
P.12 18 year old applications by ethnic group

Statistic	Ethnic group	2010	2011	2012	2013	2014	2015
June deadline applications	Asian	175	245	205	230	245	320
	Black	275	355	310	340	405	510
	Mixed	230	270	245	230	275	320
	White	5,670	6,050	5,240	4,930	5,490	5,905
	Other	35	45	35	45	50	45
Offers	Asian	135	205	175	200	225	275
	Black	200	280	250	290	335	435
	Mixed	175	215	200	175	235	265
	White	4,440	4,890	4,310	4,180	4,705	4,955
	Other	30	35	30	35	40	40
Offer rate	Asian	76.1%	82.2%	86.2%	86.5%	91.1%	86.8%
	Black	72.2%	78.9%	80.4%	85.4%	82.7%	85.1%
	Mixed	75.2%	80.0%	81.5%	75.4%	85.3%	83.4%
	White	78.3%	80.8%	82.3%	84.8%	85.7%	83.9%
	Other	81.1%	73.3%	83.3%	83.7%	74.5%	85.1%
Average offer rate	Asian	78.4%	82.5%	85.1%	89.1%	89.1%	88.7%
	Black	77.8%	80.8%	82.6%	86.2%	85.9%	84.9%
	Mixed	77.0%	81.6%	81.0%	80.1%	85.4%	84.7%
	White	77.9%	80.6%	82.2%	84.4%	85.5%	83.7%
	Other	79.0%	79.8%	79.6%	85.2%	84.5%	83.4%
Percentage point difference between offer rate and average offer rate	Asian	-2.2	-0.3	1.1	-2.6	2.0	-1.9
	Black	-5.6	-1.9	-2.2	-0.8	-3.3	0.2
	Mixed	-1.8	-1.6	0.5	-4.7	-0.0	-1.3
	White	0.4	0.2	0.0	0.4	0.2	0.2
	Other	N/A	N/A	N/A	N/A	-10.0	N/A
Contribution of group to the average offer rate	Asian	0.149	0.160	0.176	0.193	0.146	0.150
	Black	0.129	0.152	0.147	0.163	0.157	0.162
	Mixed	0.120	0.119	0.132	0.118	0.127	0.120
	White	0.899	0.883	0.885	0.873	0.865	0.851
	Other	0.130	0.088	0.120	0.075	0.052	0.142

P.13 18 year old offer rate by ethnic group

Note: The line for a group is not plotted when that group made fewer than 10 applications in any of the years from 2010-2015.

- Asian
- Black
- Mixed
- White
- Other



P.14 Percentage point difference between 18 year old offer rate and average offer rate by ethnic group

Note: The line for a group is not plotted when that group made fewer than 50 applications in any of the years from 2010-2015.

- Asian
- Black
- Mixed
- White
- Other



P.15 Applicants (all ages)

Statistic	2010	2011	2012	2013	2014	2015
June deadline applicants	12,075	13,070	11,090	10,945	11,585	11,990
Placed June deadline applicants	2,440	3,255	2,825	2,545	2,705	2,505
All placed applicants	2,860	3,490	3,330	3,040	3,160	2,860

P.16 Applications (all ages)

Statistic	2010	2011	2012	2013	2014	2015
June deadline applications	13,785	14,770	12,475	12,150	12,975	13,480
Offers	9,360	10,805	9,540	9,570	10,390	10,625
Offer rate	67.9%	73.2%	76.5%	78.8%	80.1%	78.8%

P.17 Applicants (all ages) by sex

Statistic	Sex	2010	2011	2012	2013	2014	2015
June deadline applicants	Men	5,995	6,735	5,790	5,690	6,295	6,305
	Women	6,080	6,335	5,300	5,255	5,285	5,680
Placed June deadline applicants	Men	1,280	1,830	1,610	1,475	1,560	1,455
	Women	1,165	1,430	1,215	1,065	1,145	1,050
All placed applicants	Men	1,520	1,970	1,920	1,795	1,820	1,650
	Women	1,340	1,520	1,410	1,245	1,340	1,210

P.18 Applications (all ages) by sex

Statistic	Sex	2010	2011	2012	2013	2014	2015
June deadline applications	Men	6,945	7,805	6,675	6,455	7,210	7,285
	Women	6,840	6,965	5,800	5,695	5,770	6,195
Offers	Men	4,830	5,875	5,335	5,410	6,055	6,010
	Women	4,530	4,930	4,205	4,160	4,335	4,610
Offer rate	Men	69.6%	75.3%	79.9%	83.9%	84.0%	82.5%
	Women	66.2%	70.7%	72.5%	73.0%	75.2%	74.5%

P.19 Applicants (all ages) by POLAR3 quintile

Statistic	POLAR3 quintile	2010	2011	2012	2013	2014	2015
June deadline applicants	Quintile 1	1,560	1,715	1,625	1,595	1,685	1,770
	Quintile 2	1,980	2,260	1,910	1,910	2,030	2,030
	Quintile 3	2,465	2,670	2,295	2,285	2,495	2,515
	Quintile 4	2,935	3,135	2,620	2,550	2,730	2,880
	Quintile 5	3,090	3,255	2,610	2,580	2,620	2,765
Placed June deadline applicants	Quintile 1	335	445	425	380	435	390
	Quintile 2	405	585	500	460	495	435
	Quintile 3	455	640	595	535	560	535
	Quintile 4	620	790	665	605	635	595
	Quintile 5	620	790	635	555	575	535
All placed applicants	Quintile 1	385	470	500	460	505	450
	Quintile 2	470	615	585	540	565	490
	Quintile 3	530	685	705	635	660	610
	Quintile 4	750	845	780	725	755	680
	Quintile 5	715	865	750	670	675	620

P.20 Applications (all ages) by POLAR3 quintile

Statistic	POLAR3 quintile	2010	2011	2012	2013	2014	2015
June deadline applications	Quintile 1	1,845	1,995	1,880	1,805	1,930	2,080
	Quintile 2	2,295	2,535	2,160	2,140	2,280	2,275
	Quintile 3	2,820	3,040	2,585	2,560	2,810	2,815
	Quintile 4	3,320	3,515	2,930	2,815	3,065	3,225
	Quintile 5	3,460	3,645	2,875	2,805	2,865	3,050
Offers	Quintile 1	1,185	1,410	1,400	1,370	1,535	1,580
	Quintile 2	1,560	1,815	1,660	1,670	1,815	1,790
	Quintile 3	1,875	2,205	1,975	1,985	2,225	2,210
	Quintile 4	2,300	2,585	2,240	2,275	2,445	2,550
	Quintile 5	2,415	2,765	2,235	2,245	2,345	2,465
Offer rate	Quintile 1	64.4%	70.8%	74.6%	76.0%	79.7%	76.1%
	Quintile 2	67.9%	71.6%	76.9%	78.0%	79.7%	78.7%
	Quintile 3	66.4%	72.5%	76.4%	77.6%	79.2%	78.4%
	Quintile 4	69.3%	73.4%	76.3%	80.9%	79.7%	79.1%
	Quintile 5	69.8%	75.9%	77.6%	80.2%	81.8%	80.9%

P.21 Applicants (all ages) by ethnic group

Statistic	Ethnic group	2010	2011	2012	2013	2014	2015
June deadline applicants	Asian	445	610	545	505	585	625
	Black	785	915	895	895	985	1,065
	Mixed	460	580	505	480	545	565
	White	10,235	10,815	8,990	8,900	9,315	9,575
	Other	100	95	100	110	120	100
Placed June deadline applicants	Asian	80	150	110	90	115	100
	Black	120	180	235	230	175	185
	Mixed	90	140	140	110	120	115
	White	2,120	2,750	2,310	2,070	2,260	2,075
	Other	25	25	20	25	25	15
All placed applicants	Asian	130	170	175	135	160	135
	Black	170	215	305	300	250	240
	Mixed	110	160	165	130	150	135
	White	2,410	2,905	2,640	2,420	2,550	2,310
	Other	30	25	30	35	35	25

P.22 Applications (all ages) by ethnic group

Statistic	Ethnic group	2010	2011	2012	2013	2014	2015
June deadline applications	Asian	500	690	600	545	650	675
	Black	850	980	965	960	1,065	1,150
	Mixed	515	640	570	530	605	625
	White	11,750	12,300	10,160	9,925	10,485	10,855
	Other	105	105	110	125	140	115
Offers	Asian	345	515	490	445	550	560
	Black	490	640	695	740	790	860
	Mixed	320	460	435	385	475	495
	White	8,105	9,080	7,805	7,855	8,440	8,580
	Other	70	75	80	95	105	90
Offer rate	Asian	69.1%	74.8%	81.4%	82.0%	84.9%	83.0%
	Black	57.4%	65.5%	71.9%	77.0%	74.4%	75.0%
	Mixed	61.7%	71.8%	75.9%	73.0%	78.8%	78.9%
	White	68.9%	73.8%	76.8%	79.2%	80.5%	79.1%
	Other	67.0%	73.1%	73.2%	74.0%	75.2%	78.1%

Technical Notes and Definitions

UCAS undergraduate scheme

Adjustment

Adjustment allows applicants who have met and exceeded the terms of their conditional firm offer to seek and find a place at another provider whilst keeping their place at their original firm choice provider.

Clearing

Clearing is a route for applicants that are not placed and holding no offers to find a place on courses with vacancies.

Cycle year

The UCAS application cycle which runs from September to October the following year. For example the 2015 cycle runs from September 2014 through to October 2015.

End of cycle

The point in the cycle to which the numbers in this report refer, and the point at which the cycle is closed such that no more applications or offers can be made, and no more applicants can be placed. Numbers reported at the end of cycle exclude information on a small number of applicants who cancelled during the cycle.

Extra

Applicants who are unsuccessful in obtaining an offer or decline all offers may be eligible to apply through Extra, where they can apply to one further course at a time. Extra operates from 25 February until early July. It provides applicants who are eligible the possibility of obtaining an offer before exam results are published and Clearing starts.

June 30 deadline

The deadline for main scheme applications. Applicants who apply after this date will go directly into Clearing.

Record of Prior Acceptance (RPA)

RPA is an acceptance route used when a provider informs UCAS of applicants it has accepted outside of the normal application process (e.g. individuals who have applied directly to the provider).

Reporting groups

Ethnic group

High level grouping of ethnic origin as declared by the applicant: 'White', 'Black', 'Asian', 'Mixed', 'Other', 'Unknown'. Applicants who declare themselves as 'Unknown' ethnic origin are not reported in these tables, but are included in the associated csv data file.

POLAR3 quintile

Developed by HEFCE, POLAR3 classifies small areas across the UK into five groups according to their level of young participation in Higher Education. Each of these groups represents around 20 per cent of young people and is ranked from Quintile 1 (areas with the lowest young participation rates, considered as the most disadvantaged) to Quintile 5 (highest young participation rates, considered most advantaged). POLAR3 is based on the participation rates of young people between 2005 and 2009 who entered Higher Education between 2005-06 and 2010-11, therefore is most suitable for applicants aged 19 and under. These groups are assigned using the postcode declared by the applicant at the time of their application. If a UK postcode is invalid, considered unsafe for measurement or there is no link to Census geography possible then the applicant is not assigned to a quintile. Applicants with no POLAR3 quintile are not reported.

Sex

Sex as declared by the applicant.

SIMD quintile

Scottish index of multiple deprivation (SIMD) for 2012 identifies small area concentrations of multiple deprivation across all of Scotland, providing a relative measure of deprivation amongst 6505 small areas (data zones) based on 7 socio-economic domains. These small areas are classified into five groups ranked from Quintile 1 (considered the most deprived) to Quintile 5 (considered least deprived), with equal populations in each quintile. Quintiles are assigned using the postcode declared by the applicant, applicants declaring invalid postcodes are classified as 'Not assigned' and are not reported.

SIMD is only defined for applicants domiciled in Scotland, therefore any applicants domiciled outside of Scotland cannot be assigned to an SIMD quintile and so are not reported for this measure.

SIMD is only reported for providers in Scotland. Application and entry rates by SIMD are reported in the 2015 End of Cycle Report and the 2016 cycle January deadline application rate report.

Statistics reported in the tables

All placed applicants

The number of applicants placed for entry into higher education at the provider through one of their choices, including any choices made through Extra, or via Adjustment, Clearing or RPA.

All placed applicants per 10,000 population

The number of total UK domiciled 18 year old placed applicants for entry into higher education at the provider divided by the number of UK 18 year olds in the population, multiplied by 10,000. This gives the number of 18 year olds, for every 10,000 in the population, that were placed at the provider through one of their choices, including any choices made through Extra, or via Adjustment, Clearing or RPA. It is an alternative way of expressing the entry rate to a provider. By referencing the underlying population this statistic shows how the number of placed applicants is changing in relation to the available pool of potential applicants and so gives the chance that somebody from the group will be placed at a provider.

This statistic is only reported for 18 year olds.

Average offer rate

The offer rate that you might expect if the predicted grades and subject choice of applicants were the only factors that influenced whether an applicant was made an offer by the provider. The average offer rate is calculated by dividing applicants according to their specific combination of grades (for A levels the best three predicted grades are used, for BTECs, International Baccalaureate and Scottish Highers and Advanced Highers, predicted grades along with any grades already achieved upon applying are used) and subject choice. For each combination the number of main scheme offers is divided by the number of main scheme applications, to give an overall offer rate. This is then multiplied by the number of applications made by the group for which the average offer rate is being calculated (for example POLAR3 quintile 1), to give an average number of offers for that group. These average number of offers are then added together across all combinations of predicted grade and subject and divided by the number of main scheme applications from the group to give the average offer rate.

The average offer rate does not attempt to control for any other factors that may play a part in the decision to make an offer, such as the subject of the qualifications studied, their relevance to a course, or the grade in each subject; higher numbers of A levels being studied; the exact profile of grades predicted; personal statements; teacher references; interviews; or any other criteria (such as work experience or portfolios) that may be part of the admissions decision.

This statistic is only reported for 18 year olds.

Contribution of group to the average offer rate

The way in which the average offer rate is defined means that the pattern of application and offers of a group (for example POLAR3 quintile 1) will always contribute, in part, to the average offer rate for that group. When this contribution is large, the average offer rate will mainly reflect the patterns for the group, meaning that the value of the average offer rate will be similar to the offer rate, the percentage point difference statistic will be small, and any real difference between the offer rate and what might be expected given the predicted grades and subject choices of the applicants will be difficult to detect.

Values of the contribution of group to the average offer rate range between 0 and 1. The closer the value is to 1 the greater the contribution a group makes to its own average offer rate.

This statistic is only reported for 18 year olds.

Placed June deadline applicants

An applicant who has been placed for entry into higher education at the provider through a June deadline application.

Placed June deadline applicants per 10,000 population

The number of UK domiciled 18 year old placed June deadline applicants at the provider divided by the number of UK 18 year olds in the population, multiplied by 10,000. This gives the number of 18 year olds, for every 10,000 in the population, that were placed at the provider through one of their June deadline applications. It is an alternative way of expressing the entry rate to a provider, but for placed June deadline applicants only. By referencing the underlying population this statistic shows how the number of placed June deadline applicants is changing in relation to the available pool of potential 18 year old applicants and so gives the chance that somebody from the group will be placed at a provider through a June deadline application.

This statistic is only reported for 18 year olds.

June deadline applications

An application (or choice) to a course in higher education to the provider that is made by the June 30 deadline. Each applicant can make up to five choices this way. The number of June deadline applications does not include choices made through the following routes: Clearing, Extra, Adjustment and RPAs. Applications made to October deadline courses received after the October deadline are not included in these statistics.

June deadline applicants

The number of applicants that made at least one application to the provider by the June 30 deadline.

June deadline applicants per 10,000 population

The number of UK domiciled 18 year old June deadline applicants to the provider divided by the number of UK 18 year olds in the population, multiplied by 10,000. This gives the number of 18 year olds, for every 10,000 in the population, who applied by the June 30 deadline. It is equivalent to the application rate. By referencing the underlying population this statistic shows how the number of June deadline applicants is changing in relation to the available pool of potential 18 year old applicants and so gives the chance that somebody from the group will apply to a provider by the June 30 deadline.

This statistic is only reported for 18 year olds.

Offers

An offer is defined as a provider's decision in response to an application to offer a place to an applicant, often subject to the applicant satisfying academic and/or other criteria, via a June deadline application (i.e. does not cover choices made through the following routes: Clearing, Extra, Adjustment and RPAs).

Offer rate

The number of offers made divided by the number of June deadline applications. This gives the proportion of all June deadline applications to the provider that received an offer.

Percentage point difference between offer rate and average offer rate

The offer rate minus the average offer rate.

The percentage point difference can be compared to the expected range of statistical variation resulting from the calculation of the average offer rate using the Average Offer Rate Lookup Table. Where the value of the percentage point difference lies outside of this range, the percentage point difference may be considered to represent a real difference between the offer rate and the average offer rate.

Other definitions

Age

This analysis uses country-specific age definitions that align with the cut off points for school and college cohorts within the different administrations of the UK. For England and Wales, ages are defined on the 31 August, for Northern Ireland on the 1 July and for Scotland on the 28 February the following year. Defining ages in this way matches the assignment of children to school cohorts. For applicants outside of the UK a cohort cut off of 31 August has been used.

Provider

A higher education provider - a university or college.

UK domiciled

Declared area of permanent residence within England, Northern Ireland, Scotland and Wales. Applicants from the Channel Islands and Isle of Man are not included.