

R12 University of Reading

Cycle years: 2010 - 2015

Cycle Reference Point: End of Cycle

Applicant coverage: UK domiciled

Reporting groups: Sex, POLAR3, ethnic group

Applicant statistics: June deadline applicants, placed June deadline applicants, all placed applicants, June deadline applicants per 10,000 population, placed June deadline applicants per 10,000 population, all placed applicants per 10,000 population

Application statistics: June deadline applications, offers, offer rate, average offer rate, percentage point difference between offer rate and average offer rate, contribution of group to the average offer rate

Non-disclosure controls: To avoid the disclosure of information about any individual the following measures are taken

- Applicants, placed applicants, applications and offers are rounded to the nearest 5.
- Applicants/placed applicants per 10,000 population figures are reported as 0 if the applicant/placed applicant figures are rounded to 0.
- All statistics related to the offer rate are not reported when the number of applications for a group is less than 10. The percentage point difference between the offer rate and the average offer rate is not reported when the number of applications for a group is less than 50.
- Offer rates are reported as 0% if there are fewer than 5 offers, and 100% if the number of offers is within 5 of the number of applications. When the offer rate is reported as 0% or 100%, it is reported in italics.

Contents:

18 year old applicants:	P.1
18 year old applications:	P.2
18 year old applicants by sex:	P.3
18 year old applications by sex:	P.4
18 year old applicants by POLAR3 quintile:	P.7
18 year old applications by POLAR3 quintile:	P.8
18 year old applicants by ethnic group:	P.11
18 year old applications by ethnic group:	P.12
Applicants (all ages):	P.15
Applications (all ages):	P.16
Applicants (all ages) by sex:	P.17
Applications (all ages) by sex:	P.18
Applicants (all ages) by POLAR3 quintile:	P.19
Applications (all ages) by POLAR3 quintile:	P.20
Applicants (all ages) by ethnic group:	P.21
Applications (all ages) by ethnic group:	P.22

P.1 18 year old applicants

Statistic	2010	2011	2012	2013	2014	2015
June deadline applicants	10,140	10,460	12,565	11,840	10,745	13,450
Placed June deadline applicants	1,565	1,710	1,800	1,725	1,815	1,920
All placed applicants	1,630	1,725	1,835	1,825	1,920	2,080
June deadline applicants per 10,000 population	128.5	135.8	162.5	155.6	142.7	175.6
Placed June deadline applicants per 10,000	19.8	22.2	23.3	22.7	24.1	25.0
All placed applicants per 10,000 population	20.7	22.4	23.7	24.0	25.5	27.2

P.2 18 year old applications

Statistic	2010	2011	2012	2013	2014	2015
June deadline applications	10,455	10,720	12,840	12,100	11,050	13,820
Offers	8,530	8,785	10,480	10,050	9,545	11,730
Offer rate	81.6%	81.9%	81.6%	83.0%	86.4%	84.9%

P.3 18 year old applicants by sex

Statistic	Sex	2010	2011	2012	2013	2014	2015
June deadline applicants	Men	4,620	4,770	5,610	5,320	4,640	5,710
	Women	5,520	5,690	6,955	6,520	6,105	7,740
Placed June deadline applicants	Men	735	750	780	745	765	785
	Women	835	960	1,020	975	1,045	1,135
All placed applicants	Men	765	755	790	790	810	845
	Women	865	970	1,045	1,035	1,110	1,235
June deadline applicants per 10,000 population	Men	115.1	121.2	141.5	136.3	119.9	145.5
	Women	142.3	151.1	184.5	175.9	166.8	207.1
Placed June deadline applicants per 10,000 population	Men	18.2	19.0	19.7	19.1	19.8	20.0
	Women	21.5	25.5	27.0	26.4	28.6	30.3
All placed applicants per 10,000 population	Men	19.0	19.2	20.0	20.2	20.9	21.6
	Women	22.4	25.7	27.7	28.0	30.3	33.1

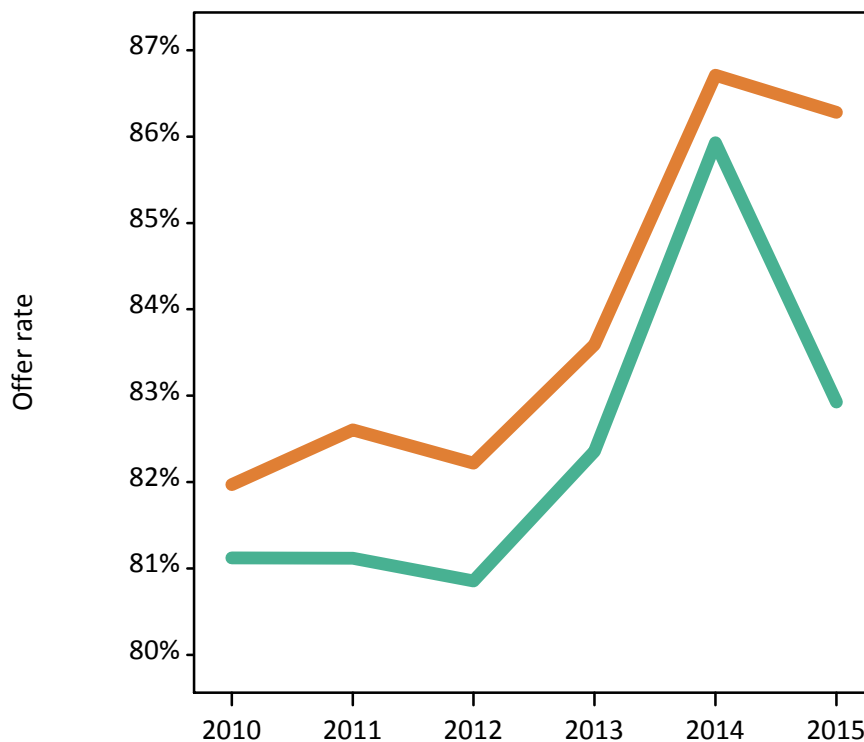
P.4 18 year old applications by sex

Statistic	Sex	2010	2011	2012	2013	2014	2015
June deadline applications	Men	4,795	4,905	5,770	5,445	4,775	5,870
	Women	5,665	5,815	7,070	6,655	6,275	7,955
Offers	Men	3,890	3,980	4,665	4,485	4,105	4,865
	Women	4,640	4,805	5,810	5,565	5,440	6,860
Offer rate	Men	81.1%	81.1%	80.9%	82.4%	85.9%	82.9%
	Women	82.0%	82.6%	82.2%	83.6%	86.7%	86.3%
Average offer rate	Men	81.7%	81.7%	81.7%	82.7%	85.9%	82.8%
	Women	81.5%	82.1%	81.6%	83.3%	86.7%	86.3%
Percentage point difference between offer rate and average offer rate	Men	-0.5	-0.6	-0.8	-0.4	-0.0	0.1
	Women	0.5	0.5	0.7	0.3	0.0	-0.1
Contribution of group to the average offer rate	Men	0.605	0.606	0.584	0.590	0.583	0.570
	Women	0.666	0.668	0.661	0.664	0.682	0.682

P.5 18 year old offer rate by sex

Note: The line for a group is not plotted when that group made fewer than 10 applications in any of the years from 2010-2015.

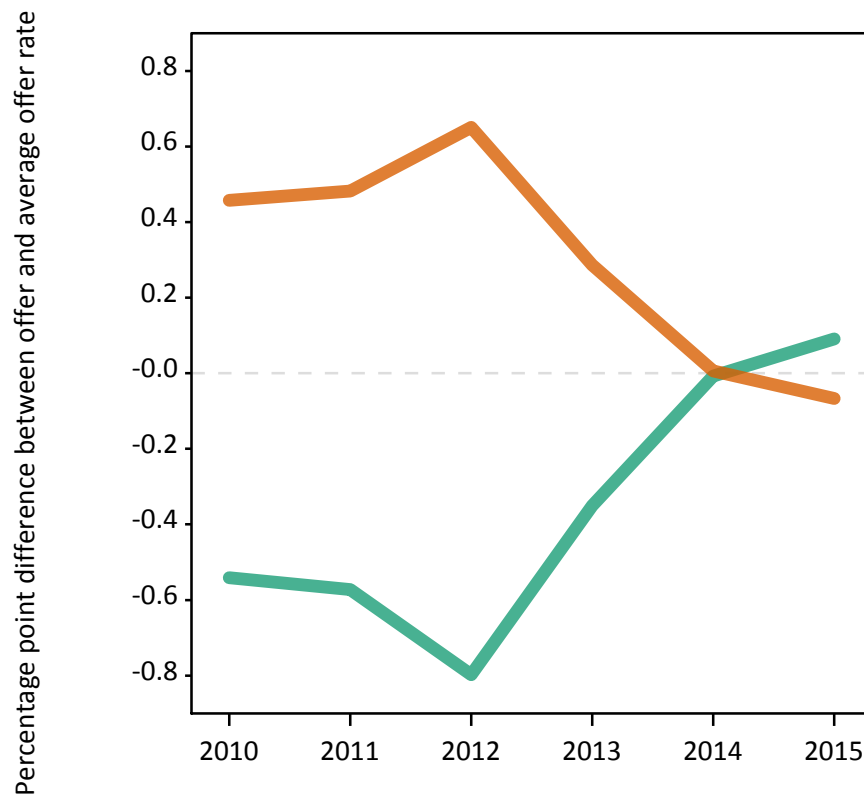
Men
Women



P.6 Percentage point difference between 18 year old offer rate and average offer rate by sex

Note: The line for a group is not plotted when that group made fewer than 50 applications in any of the years from 2010-2015.

Men
Women



P.7 18 year old applicants by POLAR3 quintile

Statistic	POLAR3 quintile	2010	2011	2012	2013	2014	2015
June deadline applicants	Quintile 1	685	720	825	810	775	1,025
	Quintile 2	1,185	1,285	1,560	1,490	1,355	1,725
	Quintile 3	1,900	1,830	2,265	2,135	1,955	2,475
	Quintile 4	2,725	2,780	3,355	3,225	2,845	3,500
	Quintile 5	3,625	3,820	4,540	4,160	3,790	4,685
Placed June deadline applicants	Quintile 1	100	120	120	115	120	140
	Quintile 2	185	185	210	205	215	245
	Quintile 3	280	290	335	275	330	320
	Quintile 4	410	455	485	475	515	510
	Quintile 5	595	655	650	645	625	705
All placed applicants	Quintile 1	100	120	120	120	130	145
	Quintile 2	190	190	210	215	220	270
	Quintile 3	295	290	340	295	350	345
	Quintile 4	425	455	495	505	540	550
	Quintile 5	620	665	660	685	675	765
June deadline applicants per 10,000 population	Quintile 1	46.2	50.0	58.1	58.0	55.7	73.3
	Quintile 2	77.1	85.5	104.0	101.2	92.7	116.3
	Quintile 3	119.6	118.8	146.8	140.1	130.0	161.0
	Quintile 4	171.2	177.6	211.3	206.1	184.5	223.5
	Quintile 5	213.9	230.8	270.2	251.7	232.5	279.9
Placed June deadline applicants per 10,000 population	Quintile 1	6.6	8.3	8.4	8.3	8.8	9.8
	Quintile 2	12.0	12.4	13.9	14.0	14.6	16.4
	Quintile 3	17.6	18.8	21.6	18.2	22.1	20.8
	Quintile 4	25.8	29.0	30.6	30.5	33.4	32.5
	Quintile 5	35.0	39.6	38.6	38.9	38.4	42.0
All placed applicants per 10,000 population	Quintile 1	6.8	8.3	8.5	8.7	9.2	10.5
	Quintile 2	12.3	12.5	14.1	14.5	14.9	18.0
	Quintile 3	18.7	18.9	22.1	19.3	23.3	22.4
	Quintile 4	26.6	29.2	31.3	32.4	35.0	35.3
	Quintile 5	36.5	40.1	39.4	41.5	41.5	45.8

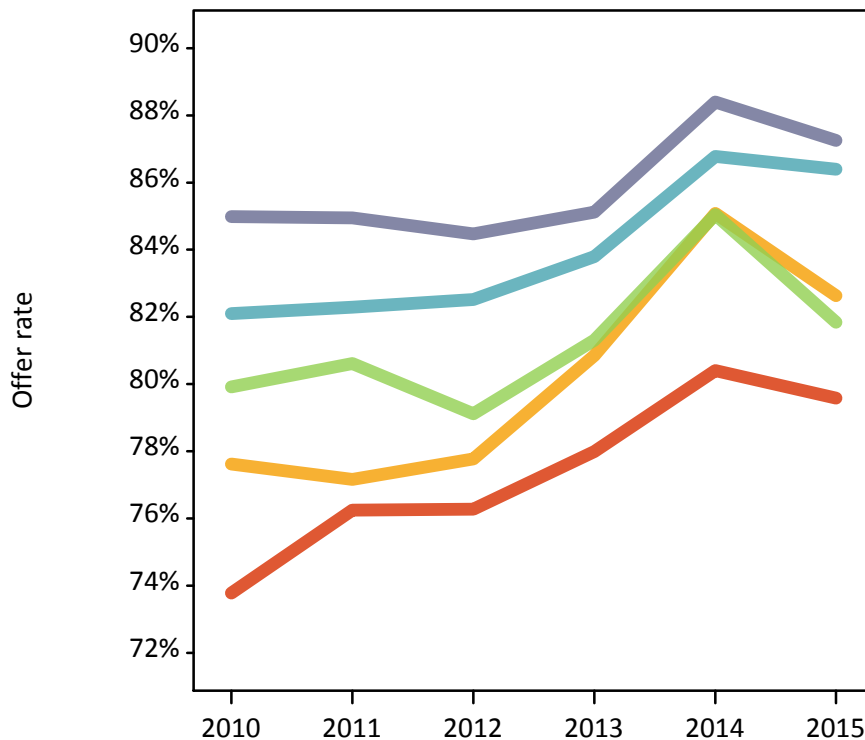
P.8 18 year old applications by POLAR3 quintile

Statistic	POLAR3 quintile	2010	2011	2012	2013	2014	2015
June deadline applications	Quintile 1	700	740	845	825	790	1,065
	Quintile 2	1,235	1,330	1,595	1,530	1,395	1,770
	Quintile 3	1,950	1,875	2,315	2,185	2,010	2,535
	Quintile 4	2,805	2,845	3,430	3,290	2,935	3,610
	Quintile 5	3,750	3,900	4,635	4,255	3,895	4,810
Offers	Quintile 1	515	565	645	645	635	845
	Quintile 2	955	1,025	1,240	1,235	1,185	1,460
	Quintile 3	1,560	1,515	1,830	1,775	1,710	2,075
	Quintile 4	2,300	2,340	2,830	2,755	2,545	3,120
	Quintile 5	3,190	3,310	3,915	3,620	3,445	4,195
Offer rate	Quintile 1	73.8%	76.2%	76.3%	78.0%	80.4%	79.6%
	Quintile 2	77.6%	77.2%	77.8%	80.8%	85.1%	82.6%
	Quintile 3	79.9%	80.6%	79.1%	81.3%	85.0%	81.8%
	Quintile 4	82.1%	82.3%	82.5%	83.8%	86.8%	86.4%
	Quintile 5	85.0%	84.9%	84.5%	85.1%	88.4%	87.3%
Average offer rate	Quintile 1	77.3%	77.2%	76.8%	78.5%	82.3%	80.3%
	Quintile 2	79.4%	78.7%	79.3%	80.9%	84.2%	83.3%
	Quintile 3	79.8%	81.1%	80.3%	81.9%	85.7%	82.4%
	Quintile 4	81.8%	82.3%	82.0%	84.2%	87.0%	86.4%
	Quintile 5	84.0%	84.0%	83.6%	84.4%	87.8%	86.6%
Percentage point difference between offer rate and average offer rate	Quintile 1	-3.5	-0.9	-0.6	-0.5	-1.9	-0.7
	Quintile 2	-1.8	-1.6	-1.5	-0.1	0.8	-0.7
	Quintile 3	0.1	-0.5	-1.2	-0.6	-0.7	-0.5
	Quintile 4	0.2	-0.0	0.5	-0.4	-0.3	0.0
	Quintile 5	1.0	1.0	0.8	0.8	0.6	0.6
Contribution of group to the average offer rate	Quintile 1	0.160	0.155	0.141	0.151	0.163	0.159
	Quintile 2	0.200	0.217	0.187	0.197	0.203	0.192
	Quintile 3	0.257	0.249	0.236	0.249	0.250	0.239
	Quintile 4	0.334	0.323	0.319	0.324	0.325	0.312
	Quintile 5	0.425	0.424	0.417	0.409	0.413	0.401

P.9 18 year old offer rate by POLAR3 quintile

Note: The line for a group is not plotted when that group made fewer than 10 applications in any of the years from 2010-2015.

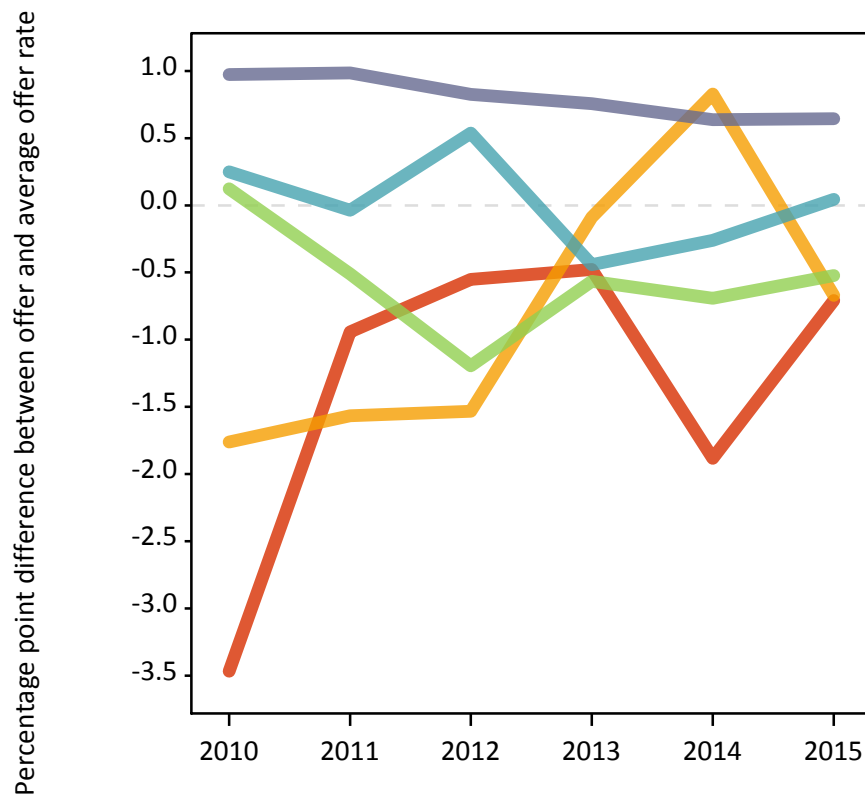
- Quintile 1
- Quintile 2
- Quintile 3
- Quintile 4
- Quintile 5



P.10 Percentage point difference between 18 year old offer rate and average offer rate by POLAR3 quintile

Note: The line for a group is not plotted when that group made fewer than 50 applications in any of the years from 2010-2015.

- Quintile 1
- Quintile 2
- Quintile 3
- Quintile 4
- Quintile 5



P.11 18 year old applicants by ethnic group

Statistic	Ethnic group	2010	2011	2012	2013	2014	2015
June deadline applicants	Asian	910	1,010	1,240	1,175	1,005	1,275
	Black	330	360	540	505	440	590
	Mixed	285	355	410	430	425	605
	White	8,450	8,580	10,160	9,510	8,695	10,785
	Other	100	95	140	165	130	145
Placed June deadline applicants	Asian	120	135	155	150	135	125
	Black	25	35	45	45	40	40
	Mixed	40	55	55	60	70	80
	White	1,360	1,475	1,525	1,435	1,540	1,655
	Other	15	10	15	25	15	15
All placed applicants	Asian	125	135	160	165	150	160
	Black	25	35	45	45	50	45
	Mixed	45	55	55	60	75	85
	White	1,410	1,480	1,555	1,515	1,615	1,770
	Other	15	10	15	25	15	15
June deadline applicants per 10,000 population	Asian	147.0	160.3	191.3	178.2	148.1	179.9
	Black	126.1	131.7	191.1	170.1	145.2	185.7
	Mixed	123.9	145.7	157.4	158.3	148.1	195.9
	White	126.0	132.5	157.3	151.2	140.9	173.1
	Other	127.3	117.3	156.0	179.8	139.7	149.5
Placed June deadline applicants per 10,000 population	Asian	19.4	21.3	23.8	22.9	20.1	17.4
	Black	8.8	12.4	15.3	14.5	13.5	12.6
	Mixed	18.1	21.9	20.7	21.8	24.7	25.9
	White	20.3	22.8	23.6	22.8	24.9	26.6
	Other	18.2	12.3	14.7	28.7	16.1	14.5
All placed applicants per 10,000 population	Asian	20.1	21.7	24.6	25.3	22.1	22.6
	Black	10.3	13.5	15.6	15.8	16.8	14.1
	Mixed	19.0	22.3	21.1	22.6	26.8	27.6
	White	21.0	22.9	24.1	24.1	26.2	28.4
	Other	19.5	12.3	15.8	29.8	17.2	16.6

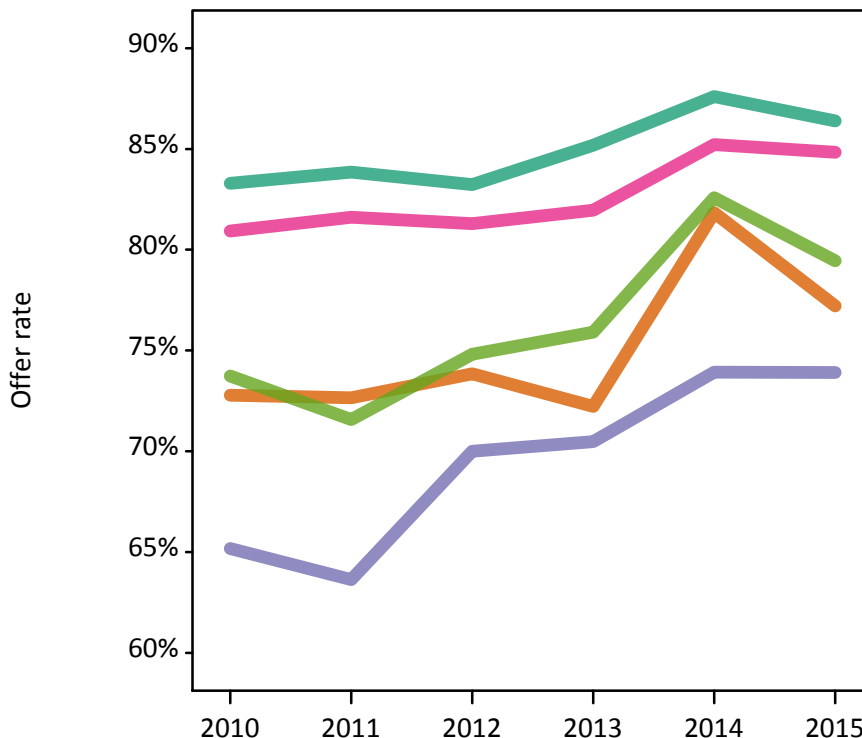
P.12 18 year old applications by ethnic group

Statistic	Ethnic group	2010	2011	2012	2013	2014	2015
June deadline applications	Asian	935	1,025	1,260	1,195	1,030	1,290
	Black	335	365	540	510	440	600
	Mixed	300	360	415	440	435	615
	White	8,720	8,815	10,405	9,735	8,965	11,115
	Other	100	95	140	165	130	145
Offers	Asian	680	745	930	865	840	995
	Black	215	230	380	360	325	440
	Mixed	240	295	340	360	370	520
	White	7,265	7,390	8,660	8,295	7,850	9,605
	Other	75	70	105	125	110	115
Offer rate	Asian	72.8%	72.7%	73.8%	72.2%	81.8%	77.2%
	Black	65.2%	63.6%	70.0%	70.5%	73.9%	73.9%
	Mixed	80.9%	81.6%	81.3%	82.0%	85.2%	84.8%
	White	83.3%	83.8%	83.2%	85.2%	87.6%	86.4%
	Other	73.7%	71.6%	74.8%	75.9%	82.6%	79.5%
Average offer rate	Asian	73.7%	74.2%	75.6%	75.3%	81.8%	79.3%
	Black	69.6%	67.4%	73.6%	72.6%	78.8%	77.5%
	Mixed	82.0%	81.5%	81.4%	81.5%	85.6%	84.7%
	White	82.9%	83.5%	82.8%	84.7%	87.4%	86.0%
	Other	75.1%	73.1%	78.6%	78.3%	78.7%	79.3%
Percentage point difference between offer rate and average offer rate	Asian	-1.0	-1.5	-1.8	-3.1	-0.0	-2.1
	Black	-4.4	-3.8	-3.6	-2.1	-4.9	-3.5
	Mixed	-1.0	0.1	-0.1	0.5	-0.4	0.1
	White	0.4	0.3	0.5	0.5	0.2	0.4
	Other	-1.3	-1.5	-3.8	-2.4	3.9	0.2
Contribution of group to the average offer rate	Asian	0.263	0.282	0.228	0.250	0.237	0.234
	Black	0.159	0.163	0.128	0.159	0.162	0.149
	Mixed	0.100	0.116	0.107	0.113	0.132	0.117
	White	0.867	0.861	0.841	0.844	0.848	0.840
	Other	0.096	0.091	0.082	0.088	0.108	0.083

P.13 18 year old offer rate by ethnic group

Note: The line for a group is not plotted when that group made fewer than 10 applications in any of the years from 2010-2015.

- Asian
- Black
- Mixed
- White
- Other



P.14 Percentage point difference between 18 year old offer rate and average offer rate by ethnic group

Note: The line for a group is not plotted when that group made fewer than 50 applications in any of the years from 2010-2015.

- Asian
- Black
- Mixed
- White
- Other



P.15 Applicants (all ages)

Statistic	2010	2011	2012	2013	2014	2015
June deadline applicants	15,010	15,655	17,120	16,975	15,740	19,010
Placed June deadline applicants	2,345	2,555	2,435	2,405	2,620	2,685
All placed applicants	2,480	2,620	2,535	2,615	2,850	2,975

P.16 Applications (all ages)

Statistic	2010	2011	2012	2013	2014	2015
June deadline applications	15,640	16,200	17,640	17,455	16,265	19,625
Offers	11,435	11,980	13,195	13,260	12,995	15,445
Offer rate	73.1%	74.0%	74.8%	76.0%	79.9%	78.7%

P.17 Applicants (all ages) by sex

Statistic	Sex	2010	2011	2012	2013	2014	2015
June deadline applicants	Men	7,035	7,380	7,870	7,900	7,105	8,465
	Women	7,975	8,275	9,245	9,075	8,635	10,545
Placed June deadline applicants	Men	1,090	1,165	1,080	1,060	1,150	1,120
	Women	1,255	1,390	1,355	1,345	1,470	1,560
All placed applicants	Men	1,130	1,170	1,095	1,140	1,235	1,225
	Women	1,350	1,445	1,440	1,475	1,615	1,750

P.18 Applications (all ages) by sex

Statistic	Sex	2010	2011	2012	2013	2014	2015
June deadline applications	Men	7,360	7,675	8,140	8,160	7,355	8,730
	Women	8,280	8,520	9,505	9,295	8,910	10,895
Offers	Men	5,330	5,595	6,005	6,150	5,790	6,650
	Women	6,105	6,385	7,190	7,110	7,205	8,795
Offer rate	Men	72.4%	72.9%	73.8%	75.4%	78.8%	76.2%
	Women	73.7%	74.9%	75.7%	76.5%	80.9%	80.7%

P.19 Applicants (all ages) by POLAR3 quintile

Statistic	POLAR3 quintile	2010	2011	2012	2013	2014	2015
June deadline applicants	Quintile 1	1,125	1,180	1,240	1,235	1,260	1,535
	Quintile 2	1,855	2,010	2,175	2,245	2,030	2,495
	Quintile 3	2,785	2,815	3,135	3,065	2,870	3,505
	Quintile 4	3,975	4,040	4,510	4,550	4,085	4,925
	Quintile 5	5,235	5,560	6,025	5,845	5,460	6,485
Placed June deadline applicants	Quintile 1	165	180	170	160	190	200
	Quintile 2	285	295	305	310	335	345
	Quintile 3	420	450	440	390	470	460
	Quintile 4	620	675	660	675	725	705
	Quintile 5	855	945	855	865	900	965
All placed applicants	Quintile 1	175	185	175	175	205	225
	Quintile 2	305	305	320	325	355	385
	Quintile 3	450	455	460	435	505	500
	Quintile 4	650	690	685	730	780	780
	Quintile 5	905	970	890	945	995	1,080

P.20 Applications (all ages) by POLAR3 quintile

Statistic	POLAR3 quintile	2010	2011	2012	2013	2014	2015
June deadline applications	Quintile 1	1,170	1,230	1,280	1,270	1,300	1,595
	Quintile 2	1,965	2,090	2,255	2,325	2,120	2,570
	Quintile 3	2,880	2,905	3,235	3,145	2,960	3,615
	Quintile 4	4,140	4,180	4,640	4,690	4,230	5,095
	Quintile 5	5,450	5,740	6,200	5,995	5,620	6,685
Offers	Quintile 1	760	805	860	865	925	1,140
	Quintile 2	1,325	1,400	1,565	1,665	1,650	1,955
	Quintile 3	2,075	2,110	2,315	2,325	2,305	2,755
	Quintile 4	3,050	3,160	3,550	3,620	3,425	4,090
	Quintile 5	4,205	4,470	4,885	4,770	4,665	5,455
Offer rate	Quintile 1	65.1%	65.6%	67.0%	67.9%	71.1%	71.4%
	Quintile 2	67.5%	67.0%	69.4%	71.5%	77.9%	76.1%
	Quintile 3	72.0%	72.5%	71.7%	73.9%	77.8%	76.2%
	Quintile 4	73.7%	75.6%	76.5%	77.1%	81.0%	80.3%
	Quintile 5	77.2%	77.8%	78.8%	79.6%	83.0%	81.6%

P.21 Applicants (all ages) by ethnic group

Statistic	Ethnic group	2010	2011	2012	2013	2014	2015
June deadline applicants	Asian	1,585	1,825	2,010	2,055	1,845	2,140
	Black	755	835	1,020	950	875	1,090
	Mixed	495	555	620	655	665	890
	White	11,875	12,125	13,095	12,890	11,970	14,455
	Other	175	190	250	315	285	315
Placed June deadline applicants	Asian	195	200	215	245	260	210
	Black	55	75	75	75	75	75
	Mixed	60	85	75	80	105	110
	White	1,995	2,165	2,040	1,950	2,135	2,245
	Other	20	15	20	40	35	30
All placed applicants	Asian	205	205	225	275	290	260
	Black	65	80	75	85	90	90
	Mixed	65	85	75	90	115	125
	White	2,110	2,225	2,115	2,105	2,295	2,445
	Other	25	15	20	50	40	40

P.22 Applications (all ages) by ethnic group

Statistic	Ethnic group	2010	2011	2012	2013	2014	2015
June deadline applications	Asian	1,650	1,865	2,060	2,105	1,910	2,185
	Black	775	855	1,045	960	890	1,110
	Mixed	515	570	635	675	675	915
	White	12,395	12,595	13,515	13,275	12,395	14,970
	Other	180	190	255	325	290	320
Offers	Asian	1,005	1,130	1,360	1,365	1,400	1,525
	Black	360	410	560	540	540	670
	Mixed	360	425	450	505	525	695
	White	9,510	9,825	10,585	10,560	10,255	12,265
	Other	110	105	150	210	200	200
Offer rate	Asian	61.0%	60.8%	66.1%	64.8%	73.4%	69.9%
	Black	46.8%	47.7%	53.5%	56.1%	60.7%	60.6%
	Mixed	70.0%	74.3%	70.6%	75.0%	77.5%	76.2%
	White	76.7%	78.0%	78.3%	79.6%	82.7%	81.9%
	Other	60.9%	56.1%	58.4%	64.6%	68.5%	61.9%

Technical Notes and Definitions

UCAS undergraduate scheme

Adjustment

Adjustment allows applicants who have met and exceeded the terms of their conditional firm offer to seek and find a place at another provider whilst keeping their place at their original firm choice provider.

Clearing

Clearing is a route for applicants that are not placed and holding no offers to find a place on courses with vacancies.

Cycle year

The UCAS application cycle which runs from September to October the following year. For example the 2015 cycle runs from September 2014 through to October 2015.

End of cycle

The point in the cycle to which the numbers in this report refer, and the point at which the cycle is closed such that no more applications or offers can be made, and no more applicants can be placed. Numbers reported at the end of cycle exclude information on a small number of applicants who cancelled during the cycle.

Extra

Applicants who are unsuccessful in obtaining an offer or decline all offers may be eligible to apply through Extra, where they can apply to one further course at a time. Extra operates from 25 February until early July. It provides applicants who are eligible the possibility of obtaining an offer before exam results are published and Clearing starts.

June 30 deadline

The deadline for main scheme applications. Applicants who apply after this date will go directly into Clearing.

Record of Prior Acceptance (RPA)

RPA is an acceptance route used when a provider informs UCAS of applicants it has accepted outside of the normal application process (e.g. individuals who have applied directly to the provider).

Reporting groups

Ethnic group

High level grouping of ethnic origin as declared by the applicant: 'White', 'Black', 'Asian', 'Mixed', 'Other', 'Unknown'. Applicants who declare themselves as 'Unknown' ethnic origin are not reported in these tables, but are included in the associated csv data file.

POLAR3 quintile

Developed by HEFCE, POLAR3 classifies small areas across the UK into five groups according to their level of young participation in Higher Education. Each of these groups represents around 20 per cent of young people and is ranked from Quintile 1 (areas with the lowest young participation rates, considered as the most disadvantaged) to Quintile 5 (highest young participation rates, considered most advantaged). POLAR3 is based on the participation rates of young people between 2005 and 2009 who entered Higher Education between 2005-06 and 2010-11, therefore is most suitable for applicants aged 19 and under. These groups are assigned using the postcode declared by the applicant at the time of their application. If a UK postcode is invalid, considered unsafe for measurement or there is no link to Census geography possible then the applicant is not assigned to a quintile. Applicants with no POLAR3 quintile are not reported.

Sex

Sex as declared by the applicant.

SIMD quintile

Scottish index of multiple deprivation (SIMD) for 2012 identifies small area concentrations of multiple deprivation across all of Scotland, providing a relative measure of deprivation amongst 6505 small areas (data zones) based on 7 socio-economic domains. These small areas are classified into five groups ranked from Quintile 1 (considered the most deprived) to Quintile 5 (considered least deprived), with equal populations in each quintile. Quintiles are assigned using the postcode declared by the applicant, applicants declaring invalid postcodes are classified as 'Not assigned' and are not reported.

SIMD is only defined for applicants domiciled in Scotland, therefore any applicants domiciled outside of Scotland cannot be assigned to an SIMD quintile and so are not reported for this measure.

SIMD is only reported for providers in Scotland. Application and entry rates by SIMD are reported in the 2015 End of Cycle Report and the 2016 cycle January deadline application rate report.

Statistics reported in the tables

All placed applicants

The number of applicants placed for entry into higher education at the provider through one of their choices, including any choices made through Extra, or via Adjustment, Clearing or RPA.

All placed applicants per 10,000 population

The number of total UK domiciled 18 year old placed applicants for entry into higher education at the provider divided by the number of UK 18 year olds in the population, multiplied by 10,000. This gives the number of 18 year olds, for every 10,000 in the population, that were placed at the provider through one of their choices, including any choices made through Extra, or via Adjustment, Clearing or RPA. It is an alternative way of expressing the entry rate to a provider. By referencing the underlying population this statistic shows how the number of placed applicants is changing in relation to the available pool of potential applicants and so gives the chance that somebody from the group will be placed at a provider.

This statistic is only reported for 18 year olds.

Average offer rate

The offer rate that you might expect if the predicted grades and subject choice of applicants were the only factors that influenced whether an applicant was made an offer by the provider. The average offer rate is calculated by dividing applicants according to their specific combination of grades (for A levels the best three predicted grades are used, for BTECs, International Baccalaureate and Scottish Highers and Advanced Highers, predicted grades along with any grades already achieved upon applying are used) and subject choice. For each combination the number of main scheme offers is divided by the number of main scheme applications, to give an overall offer rate. This is then multiplied by the number of applications made by the group for which the average offer rate is being calculated (for example POLAR3 quintile 1), to give an average number of offers for that group. These average number of offers are then added together across all combinations of predicted grade and subject and divided by the number of main scheme applications from the group to give the average offer rate.

The average offer rate does not attempt to control for any other factors that may play a part in the decision to make an offer, such as the subject of the qualifications studied, their relevance to a course, or the grade in each subject; higher numbers of A levels being studied; the exact profile of grades predicted; personal statements; teacher references; interviews; or any other criteria (such as work experience or portfolios) that may be part of the admissions decision.

This statistic is only reported for 18 year olds.

Contribution of group to the average offer rate

The way in which the average offer rate is defined means that the pattern of application and offers of a group (for example POLAR3 quintile 1) will always contribute, in part, to the average offer rate for that group. When this contribution is large, the average offer rate will mainly reflect the patterns for the group, meaning that the value of the average offer rate will be similar to the offer rate, the percentage point difference statistic will be small, and any real difference between the offer rate and what might be expected given the predicted grades and subject choices of the applicants will be difficult to detect.

Values of the contribution of group to the average offer rate range between 0 and 1. The closer the value is to 1 the greater the contribution a group makes to its own average offer rate.

This statistic is only reported for 18 year olds.

Placed June deadline applicants

An applicant who has been placed for entry into higher education at the provider through a June deadline application.

Placed June deadline applicants per 10,000 population

The number of UK domiciled 18 year old placed June deadline applicants at the provider divided by the number of UK 18 year olds in the population, multiplied by 10,000. This gives the number of 18 year olds, for every 10,000 in the population, that were placed at the provider through one of their June deadline applications. It is an alternative way of expressing the entry rate to a provider, but for placed June deadline applicants only. By referencing the underlying population this statistic shows how the number of placed June deadline applicants is changing in relation to the available pool of potential 18 year old applicants and so gives the chance that somebody from the group will be placed at a provider through a June deadline application.

This statistic is only reported for 18 year olds.

June deadline applications

An application (or choice) to a course in higher education to the provider that is made by the June 30 deadline. Each applicant can make up to five choices this way. The number of June deadline applications does not include choices made through the following routes: Clearing, Extra, Adjustment and RPAs. Applications made to October deadline courses received after the October deadline are not included in these statistics.

June deadline applicants

The number of applicants that made at least one application to the provider by the June 30 deadline.

June deadline applicants per 10,000 population

The number of UK domiciled 18 year old June deadline applicants to the provider divided by the number of UK 18 year olds in the population, multiplied by 10,000. This gives the number of 18 year olds, for every 10,000 in the population, who applied by the June 30 deadline. It is equivalent to the application rate. By referencing the underlying population this statistic shows how the number of June deadline applicants is changing in relation to the available pool of potential 18 year old applicants and so gives the chance that somebody from the group will apply to a provider by the June 30 deadline.

This statistic is only reported for 18 year olds.

Offers

An offer is defined as a provider's decision in response to an application to offer a place to an applicant, often subject to the applicant satisfying academic and/or other criteria, via a June deadline application (i.e. does not cover choices made through the following routes: Clearing, Extra, Adjustment and RPAs).

Offer rate

The number of offers made divided by the number of June deadline applications. This gives the proportion of all June deadline applications to the provider that received an offer.

Percentage point difference between offer rate and average offer rate

The offer rate minus the average offer rate.

The percentage point difference can be compared to the expected range of statistical variation resulting from the calculation of the average offer rate using the Average Offer Rate Lookup Table. Where the value of the percentage point difference lies outside of this range, the percentage point difference may be considered to represent a real difference between the offer rate and the average offer rate.

Other definitions

Age

This analysis uses country-specific age definitions that align with the cut off points for school and college cohorts within the different administrations of the UK. For England and Wales, ages are defined on the 31 August, for Northern Ireland on the 1 July and for Scotland on the 28 February the following year. Defining ages in this way matches the assignment of children to school cohorts. For applicants outside of the UK a cohort cut off of 31 August has been used.

Provider

A higher education provider - a university or college.

UK domiciled

Declared area of permanent residence within England, Northern Ireland, Scotland and Wales. Applicants from the Channel Islands and Isle of Man are not included.