

## Q75 Queens University Belfast

**Cycle years:** 2010 - 2015

**Cycle Reference Point:** End of Cycle

**Applicant coverage:** UK domiciled

**Reporting groups:** Sex, POLAR3, ethnic group

**Applicant statistics:** June deadline applicants, placed June deadline applicants, all placed applicants, June deadline applicants per 10,000 population, placed June deadline applicants per 10,000 population, all placed applicants per 10,000 population

**Application statistics:** June deadline applications, offers, offer rate, average offer rate, percentage point difference between offer rate and average offer rate, contribution of group to the average offer rate

**Non-disclosure controls:** To avoid the disclosure of information about any individual the following measures are taken

- Applicants, placed applicants, applications and offers are rounded to the nearest 5.
- Applicants/placed applicants per 10,000 population figures are reported as 0 if the applicant/placed applicant figures are rounded to 0.
- All statistics related to the offer rate are not reported when the number of applications for a group is less than 10. The percentage point difference between the offer rate and the average offer rate is not reported when the number of applications for a group is less than 50.
- Offer rates are reported as 0% if there are fewer than 5 offers, and 100% if the number of offers is within 5 of the number of applications. When the offer rate is reported as 0% or 100%, it is reported in italics.

### Contents:

18 year old applicants:	P.1
18 year old applications:	P.2
18 year old applicants by sex:	P.3
18 year old applications by sex:	P.4
18 year old applicants by POLAR3 quintile:	P.7
18 year old applications by POLAR3 quintile:	P.8
18 year old applicants by ethnic group:	P.11
18 year old applications by ethnic group:	P.12
Applicants (all ages):	P.15
Applications (all ages):	P.16
Applicants (all ages) by sex:	P.17
Applications (all ages) by sex:	P.18
Applicants (all ages) by POLAR3 quintile:	P.19
Applications (all ages) by POLAR3 quintile:	P.20
Applicants (all ages) by ethnic group:	P.21
Applications (all ages) by ethnic group:	P.22

## P.1 18 year old applicants

Statistic	2010	2011	2012	2013	2014	2015
June deadline applicants	7,810	7,720	8,060	8,715	8,755	9,095
Placed June deadline applicants	2,545	2,425	2,590	2,840	2,690	2,545
All placed applicants	2,670	2,535	2,720	2,955	2,815	2,660
June deadline applicants per 10,000 population	98.9	100.3	104.2	114.5	116.3	118.7
Placed June deadline applicants per 10,000	32.3	31.5	33.5	37.3	35.7	33.2
All placed applicants per 10,000 population	33.8	32.9	35.2	38.8	37.3	34.7

## P.2 18 year old applications

Statistic	2010	2011	2012	2013	2014	2015
June deadline applications	13,795	13,105	14,095	15,625	15,580	15,975
Offers	12,460	11,990	12,975	13,310	13,495	13,755
Offer rate	90.3%	91.5%	92.1%	85.2%	86.6%	86.1%

### P.3 18 year old applicants by sex

Statistic	Sex	2010	2011	2012	2013	2014	2015
June deadline applicants	Men	3,715	3,775	3,885	3,995	3,955	4,000
	Women	4,090	3,950	4,170	4,720	4,800	5,095
Placed June deadline applicants	Men	1,270	1,220	1,260	1,380	1,295	1,160
	Women	1,275	1,210	1,330	1,460	1,400	1,390
All placed applicants	Men	1,340	1,265	1,310	1,425	1,345	1,205
	Women	1,330	1,270	1,410	1,530	1,470	1,455
June deadline applicants per 10,000 population	Men	92.5	95.9	98.0	102.3	102.1	102.0
	Women	105.5	104.8	110.7	127.4	131.2	136.3
Placed June deadline applicants per 10,000 population	Men	31.6	31.0	31.8	35.4	33.4	29.5
	Women	32.9	32.1	35.3	39.4	38.2	37.1
All placed applicants per 10,000 population	Men	33.4	32.1	33.0	36.5	34.7	30.7
	Women	34.3	33.7	37.4	41.3	40.2	38.9

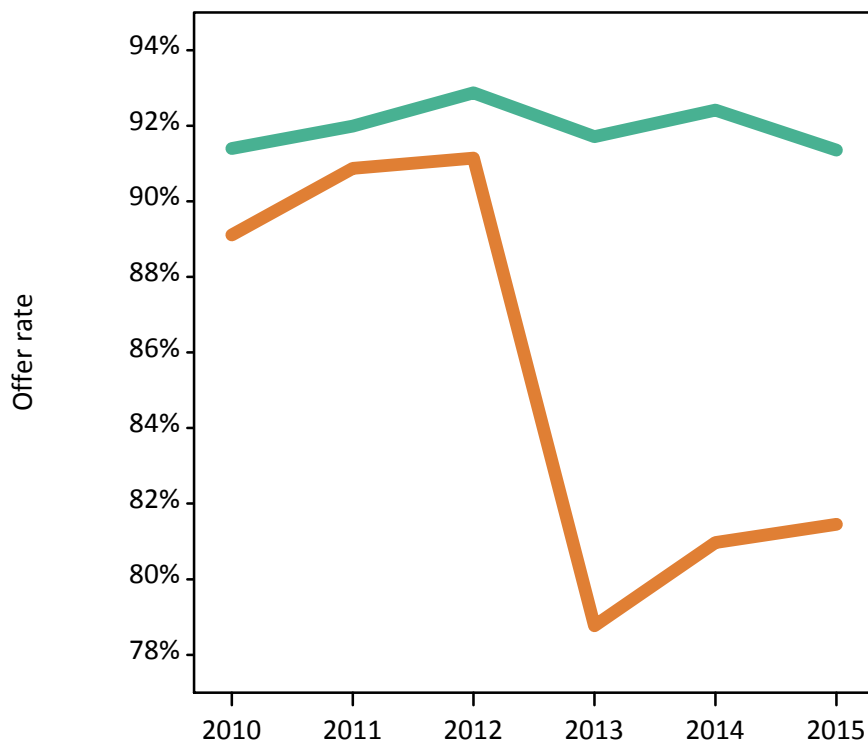
### P.4 18 year old applications by sex

Statistic	Sex	2010	2011	2012	2013	2014	2015
June deadline applications	Men	7,140	6,980	7,455	7,735	7,670	7,475
	Women	6,655	6,125	6,640	7,890	7,910	8,500
Offers	Men	6,525	6,420	6,920	7,095	7,090	6,830
	Women	5,930	5,565	6,050	6,215	6,405	6,920
Offer rate	Men	91.4%	92.0%	92.9%	91.7%	92.4%	91.4%
	Women	89.1%	90.9%	91.1%	78.8%	81.0%	81.5%
Average offer rate	Men	91.6%	92.5%	93.2%	92.1%	92.8%	91.9%
	Women	88.9%	90.3%	90.7%	78.4%	80.6%	81.0%
Percentage point difference between offer rate and average offer rate	Men	-0.2	-0.5	-0.4	-0.4	-0.4	-0.5
	Women	0.2	0.5	0.4	0.4	0.4	0.4
Contribution of group to the average offer rate	Men	0.635	0.645	0.641	0.658	0.637	0.608
	Women	0.608	0.596	0.597	0.664	0.648	0.655

### P.5 18 year old offer rate by sex

Note: The line for a group is not plotted when that group made fewer than 10 applications in any of the years from 2010-2015.

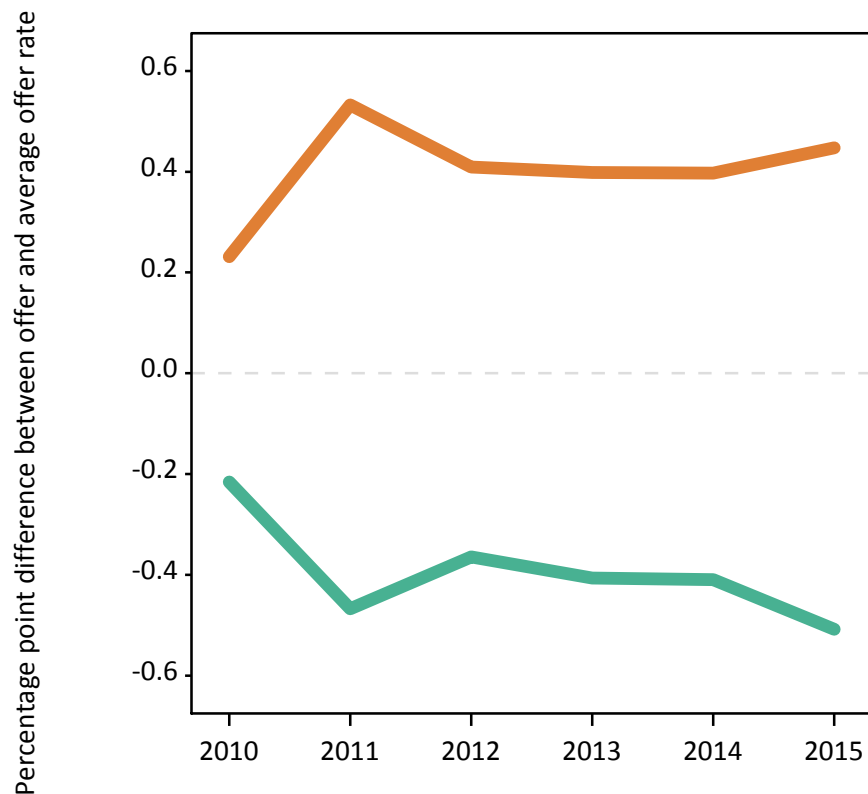
Men  
Women



### P.6 Percentage point difference between 18 year old offer rate and average offer rate by sex

Note: The line for a group is not plotted when that group made fewer than 50 applications in any of the years from 2010-2015.

Men  
Women



## P.7 18 year old applicants by POLAR3 quintile

Statistic	POLAR3 quintile	2010	2011	2012	2013	2014	2015
June deadline applicants	Quintile 1	470	420	480	520	540	590
	Quintile 2	690	740	755	820	865	890
	Quintile 3	1,225	1,130	1,195	1,335	1,360	1,410
	Quintile 4	2,330	2,300	2,340	2,500	2,575	2,660
	Quintile 5	3,075	3,115	3,275	3,520	3,405	3,530
Placed June deadline applicants	Quintile 1	135	100	135	125	140	115
	Quintile 2	215	215	220	265	240	220
	Quintile 3	395	350	390	405	415	395
	Quintile 4	765	740	765	855	815	805
	Quintile 5	1,040	1,015	1,080	1,185	1,080	1,010
All placed applicants	Quintile 1	135	105	135	130	145	125
	Quintile 2	225	225	230	270	250	225
	Quintile 3	405	365	410	420	440	415
	Quintile 4	805	765	805	885	850	840
	Quintile 5	1,095	1,070	1,135	1,235	1,125	1,050
June deadline applicants per 10,000 population	Quintile 1	31.8	29.2	33.8	37.5	38.7	42.0
	Quintile 2	44.8	49.3	50.3	55.6	59.1	59.9
	Quintile 3	76.9	73.3	77.5	87.5	90.5	91.8
	Quintile 4	146.3	147.0	147.5	159.7	167.2	170.1
	Quintile 5	181.6	188.2	194.9	213.0	208.7	211.0
Placed June deadline applicants per 10,000 population	Quintile 1	9.0	7.0	9.4	9.0	10.0	8.1
	Quintile 2	14.0	14.2	14.6	17.9	16.4	14.7
	Quintile 3	24.8	22.9	25.2	26.6	27.7	25.8
	Quintile 4	47.9	47.2	48.2	54.5	53.0	51.5
	Quintile 5	61.2	61.4	64.3	71.7	66.1	60.5
All placed applicants per 10,000 population	Quintile 1	9.3	7.2	9.5	9.4	10.4	8.9
	Quintile 2	14.6	15.0	15.3	18.5	16.9	15.3
	Quintile 3	25.5	23.8	26.7	27.7	29.2	27.2
	Quintile 4	50.6	48.9	50.7	56.6	55.2	53.5
	Quintile 5	64.6	64.5	67.7	74.7	69.1	62.8

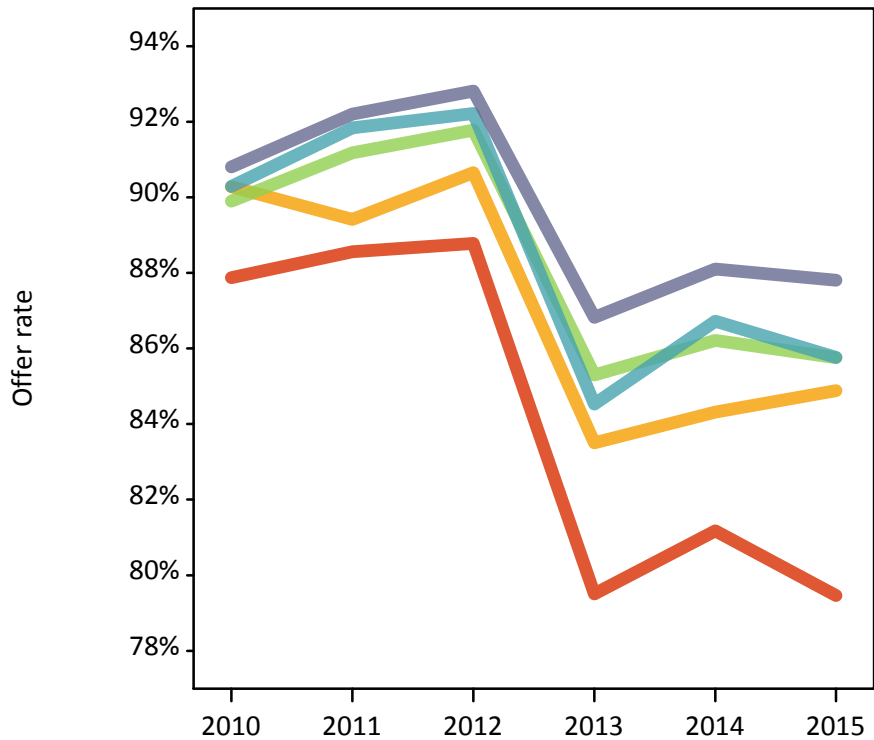
## P.8 18 year old applications by POLAR3 quintile

Statistic	POLAR3 quintile	2010	2011	2012	2013	2014	2015
June deadline applications	Quintile 1	835	710	820	920	920	970
	Quintile 2	1,235	1,275	1,285	1,475	1,525	1,510
	Quintile 3	2,235	1,905	2,140	2,395	2,395	2,505
	Quintile 4	4,150	3,955	4,150	4,585	4,690	4,750
	Quintile 5	5,305	5,245	5,680	6,215	6,035	6,225
Offers	Quintile 1	730	625	730	735	745	770
	Quintile 2	1,115	1,140	1,165	1,230	1,285	1,280
	Quintile 3	2,010	1,735	1,965	2,045	2,065	2,150
	Quintile 4	3,745	3,635	3,830	3,875	4,070	4,070
	Quintile 5	4,820	4,835	5,270	5,400	5,315	5,465
Offer rate	Quintile 1	87.9%	88.6%	88.8%	79.5%	81.2%	79.5%
	Quintile 2	90.3%	89.4%	90.7%	83.5%	84.3%	84.9%
	Quintile 3	89.9%	91.2%	91.8%	85.3%	86.2%	85.8%
	Quintile 4	90.3%	91.8%	92.2%	84.5%	86.7%	85.8%
	Quintile 5	90.8%	92.2%	92.8%	86.8%	88.1%	87.8%
Average offer rate	Quintile 1	89.3%	90.8%	89.8%	82.4%	83.7%	82.4%
	Quintile 2	90.2%	91.0%	92.2%	84.2%	85.6%	85.3%
	Quintile 3	90.0%	91.7%	92.1%	84.8%	86.5%	86.3%
	Quintile 4	90.5%	91.6%	91.9%	84.9%	86.3%	85.6%
	Quintile 5	90.4%	91.5%	92.4%	86.2%	87.6%	87.2%
Percentage point difference between offer rate and average offer rate	Quintile 1	-1.4	-2.2	-1.1	-2.9	-2.5	-2.9
	Quintile 2	0.1	-1.6	-1.6	-0.7	-1.3	-0.4
	Quintile 3	-0.1	-0.5	-0.4	0.5	-0.3	-0.5
	Quintile 4	-0.2	0.3	0.3	-0.3	0.4	0.2
	Quintile 5	0.4	0.7	0.4	0.6	0.5	0.7
Contribution of group to the average offer rate	Quintile 1	0.162	0.155	0.148	0.153	0.144	0.154
	Quintile 2	0.163	0.172	0.171	0.155	0.168	0.161
	Quintile 3	0.233	0.215	0.224	0.210	0.212	0.215
	Quintile 4	0.355	0.366	0.349	0.345	0.345	0.342
	Quintile 5	0.438	0.456	0.458	0.447	0.437	0.439

### P.9 18 year old offer rate by POLAR3 quintile

Note: The line for a group is not plotted when that group made fewer than 10 applications in any of the years from 2010-2015.

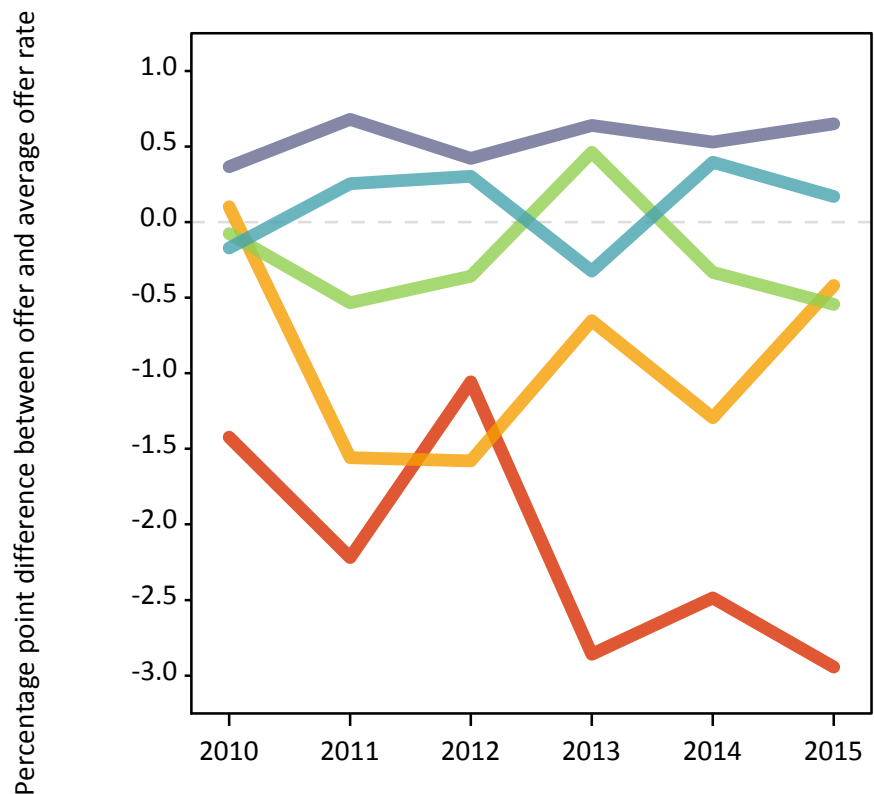
- Quintile 1
- Quintile 2
- Quintile 3
- Quintile 4
- Quintile 5



### P.10 Percentage point difference between 18 year old offer rate and average offer rate by POLAR3 quintile

Note: The line for a group is not plotted when that group made fewer than 50 applications in any of the years from 2010-2015.

- Quintile 1
- Quintile 2
- Quintile 3
- Quintile 4
- Quintile 5



## P.11 18 year old applicants by ethnic group

Statistic	Ethnic group	2010	2011	2012	2013	2014	2015
June deadline applicants	Asian	70	90	110	120	140	175
	Black	15	20	25	35	35	40
	Mixed	55	80	85	105	100	140
	White	7,640	7,500	7,790	8,420	8,435	8,685
	Other	5	15	15	20	25	25
Placed June deadline applicants	Asian	15	20	20	25	30	25
	Black	0	0	0	5	0	5
	Mixed	10	15	20	15	15	25
	White	2,510	2,390	2,540	2,790	2,640	2,485
	Other	0	5	0	0	5	5
All placed applicants	Asian	15	20	25	25	30	25
	Black	0	0	0	5	0	5
	Mixed	15	20	20	15	15	25
	White	2,630	2,490	2,670	2,900	2,760	2,590
	Other	0	5	0	0	5	5
June deadline applicants per 10,000 population	Asian	11.0	14.4	17.1	18.0	20.8	25.0
	Black	5.0	6.9	8.2	12.5	11.2	12.3
	Mixed	24.2	32.6	33.4	38.5	35.5	45.1
	White	113.9	115.9	120.7	133.8	136.7	139.4
	Other	9.1	16.0	17.0	23.2	24.7	24.9
Placed June deadline applicants per 10,000 population	Asian	2.3	2.9	3.4	3.5	4.1	3.5
	Black	0.0	0.0	0.0	2.0	0.0	0.9
	Mixed	4.7	6.2	6.9	5.9	5.6	8.1
	White	37.5	36.9	39.4	44.4	42.8	39.9
	Other	0.0	3.7	0.0	0.0	3.2	3.1
All placed applicants per 10,000 population	Asian	2.4	3.2	3.6	3.8	4.6	3.8
	Black	0.0	0.0	0.0	2.0	0.0	1.9
	Mixed	6.9	7.4	7.3	6.3	5.6	8.1
	White	39.2	38.4	41.3	46.1	44.7	41.6
	Other	0.0	3.7	0.0	0.0	3.2	3.1

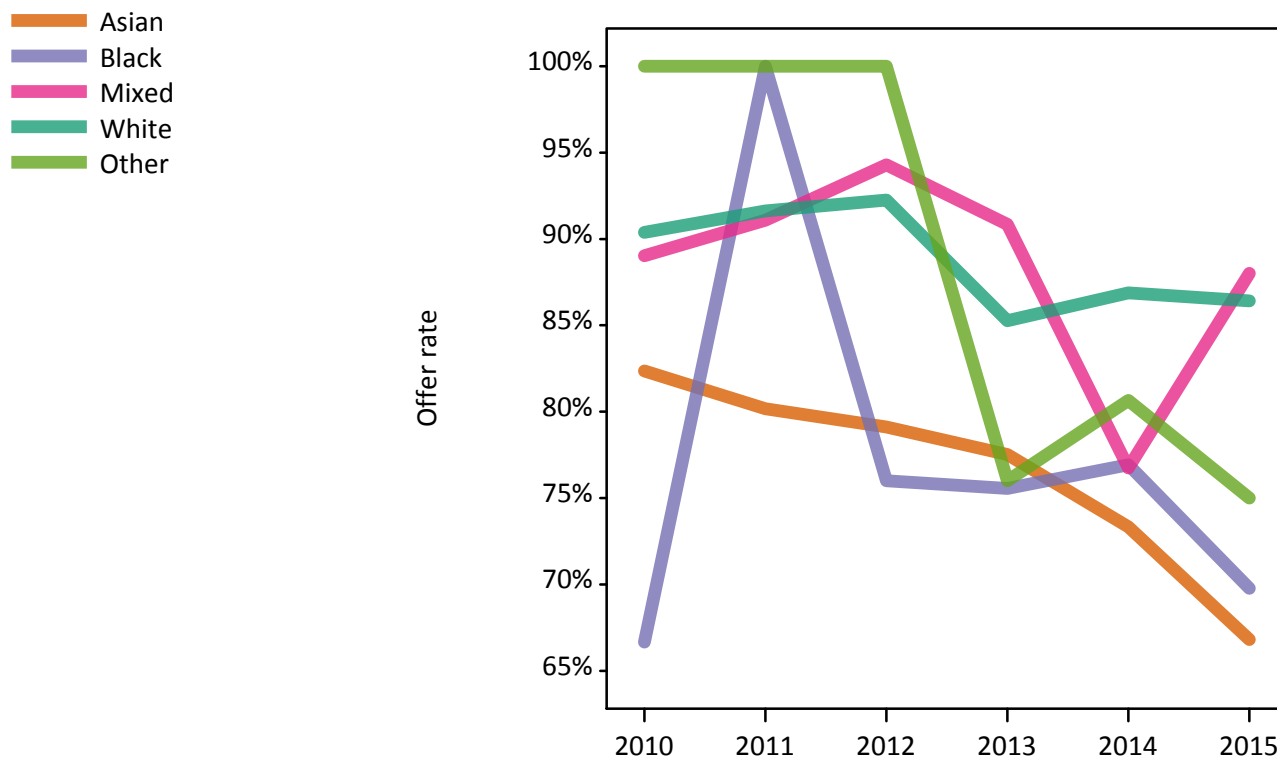


## P.12 18 year old applications by ethnic group

Statistic	Ethnic group	2010	2011	2012	2013	2014	2015
June deadline applications	Asian	100	115	160	170	180	230
	Black	15	20	25	45	40	45
	Mixed	80	100	105	130	130	175
	White	13,550	12,825	13,745	15,240	15,175	15,450
	Other	15	15	20	25	30	30
Offers	Asian	85	95	125	130	130	155
	Black	10	20	20	35	30	30
	Mixed	75	90	100	120	100	155
	White	12,245	11,750	12,680	12,995	13,185	13,350
	Other	10	10	15	20	25	20
Offer rate	Asian	82.4%	80.2%	79.1%	77.5%	73.3%	66.8%
	Black	66.7%	100.0%	76.0%	75.6%	76.9%	69.8%
	Mixed	89.0%	91.1%	94.3%	90.8%	76.7%	88.0%
	White	90.4%	91.6%	92.2%	85.3%	86.9%	86.4%
	Other	100.0%	100.0%	100.0%	76.0%	80.6%	75.0%
Average offer rate	Asian	86.7%	84.5%	83.4%	79.1%	78.5%	73.2%
	Black	85.0%	94.1%	83.2%	79.5%	80.0%	67.0%
	Mixed	92.5%	91.1%	95.4%	92.0%	82.4%	89.0%
	White	90.3%	91.5%	92.2%	85.2%	86.7%	86.3%
	Other	83.3%	78.9%	87.4%	86.4%	87.2%	69.2%
Percentage point difference between offer rate and average offer rate	Asian	-4.3	-4.3	-4.3	-1.5	-5.2	-6.4
	Black	N/A	N/A	N/A	N/A	N/A	N/A
	Mixed	-3.4	0.0	-1.1	-1.2	-5.7	-1.0
	White	0.1	0.1	0.1	0.1	0.1	0.1
	Other	N/A	N/A	N/A	N/A	N/A	N/A
Contribution of group to the average offer rate	Asian	0.109	0.141	0.116	0.106	0.086	0.102
	Black	0.156	0.088	0.171	0.212	0.120	0.221
	Mixed	0.089	0.095	0.112	0.098	0.093	0.097
	White	0.984	0.981	0.978	0.978	0.976	0.971
	Other	0.112	0.080	0.083	0.091	0.049	0.102

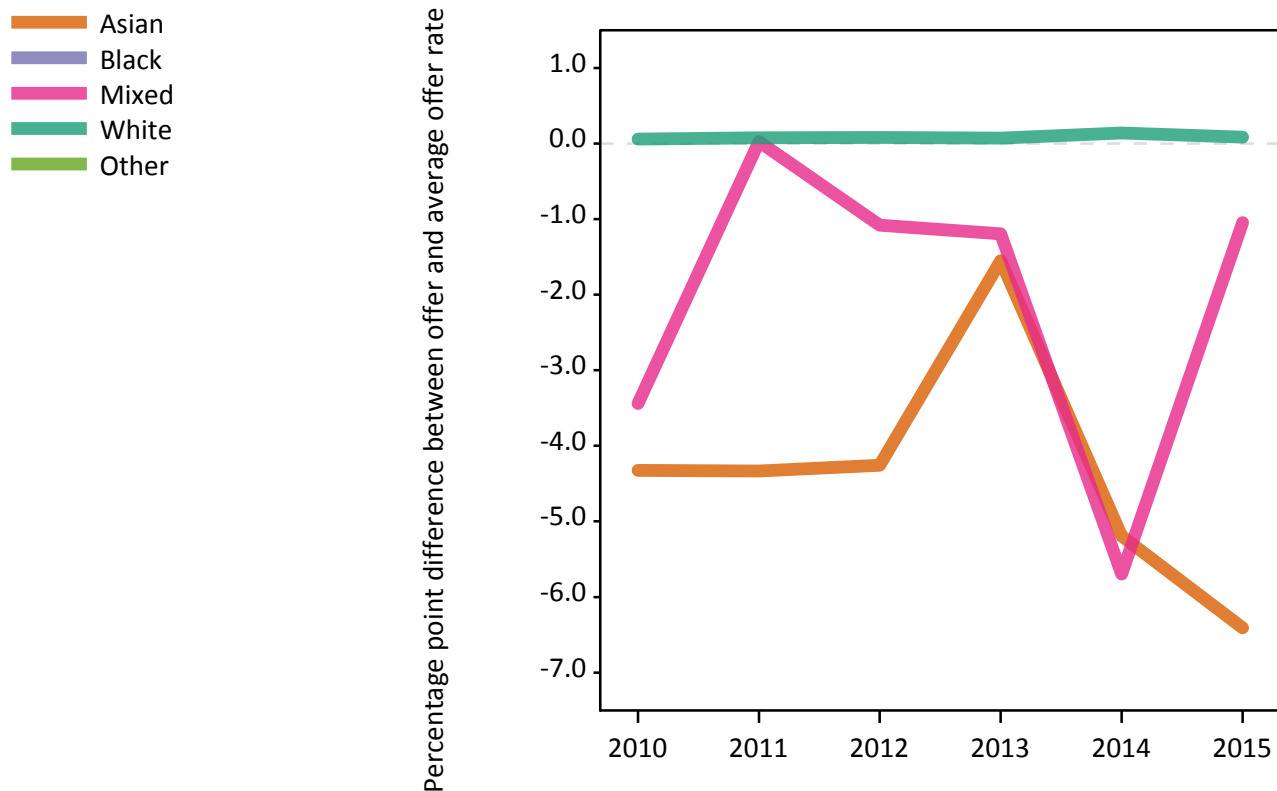
**P.13 18 year old offer rate by ethnic group**

Note: The line for a group is not plotted when that group made fewer than 10 applications in any of the years from 2010-2015.



**P.14 Percentage point difference between 18 year old offer rate and average offer rate by ethnic group**

Note: The line for a group is not plotted when that group made fewer than 50 applications in any of the years from 2010-2015.



### P.15 Applicants (all ages)

Statistic	2010	2011	2012	2013	2014	2015
June deadline applicants	11,045	11,280	11,470	14,070	14,075	14,685
Placed June deadline applicants	3,390	3,395	3,530	4,075	3,995	3,810
All placed applicants	3,570	3,540	3,735	4,295	4,260	4,030

### P.16 Applications (all ages)

Statistic	2010	2011	2012	2013	2014	2015
June deadline applications	19,150	18,960	19,595	25,250	25,050	25,800
Offers	15,685	15,595	16,465	17,880	18,190	18,695
Offer rate	81.9%	82.2%	84.0%	70.8%	72.6%	72.5%

### P.17 Applicants (all ages) by sex

Statistic	Sex	2010	2011	2012	2013	2014	2015
June deadline applicants	Men	5,190	5,480	5,570	6,115	6,000	6,255
	Women	5,855	5,800	5,900	7,955	8,075	8,430
Placed June deadline applicants	Men	1,645	1,685	1,755	1,935	1,850	1,700
	Women	1,745	1,710	1,775	2,140	2,150	2,110
All placed applicants	Men	1,740	1,750	1,840	2,010	1,935	1,780
	Women	1,830	1,790	1,895	2,285	2,325	2,250

### P.18 Applications (all ages) by sex

Statistic	Sex	2010	2011	2012	2013	2014	2015
June deadline applications	Men	9,675	9,840	10,275	11,405	11,190	11,270
	Women	9,475	9,120	9,320	13,845	13,860	14,530
Offers	Men	8,060	8,250	8,785	9,480	9,360	9,250
	Women	7,625	7,345	7,680	8,400	8,830	9,445
Offer rate	Men	83.3%	83.8%	85.5%	83.1%	83.7%	82.1%
	Women	80.5%	80.6%	82.4%	60.7%	63.7%	65.0%

### P.19 Applicants (all ages) by POLAR3 quintile

Statistic	POLAR3 quintile	2010	2011	2012	2013	2014	2015
June deadline applicants	Quintile 1	835	800	835	1,085	1,115	1,140
	Quintile 2	1,095	1,185	1,180	1,485	1,605	1,630
	Quintile 3	1,750	1,710	1,780	2,260	2,215	2,330
	Quintile 4	3,185	3,260	3,245	3,960	4,015	4,235
	Quintile 5	4,150	4,305	4,410	5,250	5,100	5,315
Placed June deadline applicants	Quintile 1	225	185	220	260	260	245
	Quintile 2	315	340	325	405	390	370
	Quintile 3	535	505	545	610	645	615
	Quintile 4	960	1,005	1,005	1,190	1,140	1,145
	Quintile 5	1,345	1,350	1,435	1,605	1,550	1,430
All placed applicants	Quintile 1	235	190	230	280	280	265
	Quintile 2	330	355	340	425	425	390
	Quintile 3	555	525	575	645	685	655
	Quintile 4	1,020	1,045	1,070	1,245	1,215	1,210
	Quintile 5	1,420	1,420	1,515	1,685	1,645	1,505

### P.20 Applications (all ages) by POLAR3 quintile

Statistic	POLAR3 quintile	2010	2011	2012	2013	2014	2015
June deadline applications	Quintile 1	1,460	1,365	1,405	2,065	2,085	1,980
	Quintile 2	1,900	2,040	1,965	2,680	2,870	2,815
	Quintile 3	3,140	2,910	3,100	4,110	3,900	4,125
	Quintile 4	5,535	5,495	5,590	7,110	7,225	7,520
	Quintile 5	7,055	7,115	7,495	9,230	8,925	9,315
Offers	Quintile 1	1,105	1,000	1,065	1,195	1,270	1,230
	Quintile 2	1,525	1,610	1,570	1,780	1,905	1,910
	Quintile 3	2,560	2,330	2,580	2,810	2,865	2,990
	Quintile 4	4,520	4,590	4,730	5,100	5,250	5,455
	Quintile 5	5,925	6,035	6,490	6,950	6,865	7,085
Offer rate	Quintile 1	75.7%	73.2%	75.9%	57.9%	61.0%	62.3%
	Quintile 2	80.3%	78.9%	79.9%	66.4%	66.4%	67.7%
	Quintile 3	81.5%	80.1%	83.2%	68.5%	73.4%	72.4%
	Quintile 4	81.7%	83.5%	84.6%	71.7%	72.7%	72.5%
	Quintile 5	83.9%	84.8%	86.5%	75.3%	76.9%	76.1%

## P.21 Applicants (all ages) by ethnic group

Statistic	Ethnic group	2010	2011	2012	2013	2014	2015
June deadline applicants	Asian	125	170	225	260	300	405
	Black	55	65	75	105	120	125
	Mixed	95	135	140	160	170	220
	White	10,715	10,845	10,950	13,455	13,385	13,810
	Other	20	25	30	50	50	45
Placed June deadline applicants	Asian	25	35	45	45	50	55
	Black	5	5	10	15	10	10
	Mixed	20	30	30	30	25	35
	White	3,325	3,315	3,430	3,980	3,900	3,685
	Other	5	5	5	5	5	10
All placed applicants	Asian	25	40	50	50	60	60
	Black	5	5	15	15	10	15
	Mixed	25	30	35	30	30	35
	White	3,500	3,455	3,625	4,190	4,140	3,895
	Other	5	5	5	5	5	10

## P.22 Applications (all ages) by ethnic group

Statistic	Ethnic group	2010	2011	2012	2013	2014	2015
June deadline applications	Asian	175	230	315	345	370	515
	Black	60	75	90	135	155	140
	Mixed	130	180	170	210	225	270
	White	18,690	18,400	18,915	24,440	24,160	24,705
	Other	35	30	35	65	70	55
Offers	Asian	120	155	220	215	215	285
	Black	20	35	45	60	65	50
	Mixed	105	140	140	170	150	210
	White	15,360	15,205	15,980	17,375	17,670	18,035
	Other	30	20	25	30	45	35
Offer rate	Asian	68.8%	68.9%	69.3%	63.0%	58.8%	55.2%
	Black	32.3%	46.7%	51.1%	45.9%	42.2%	37.0%
	Mixed	80.0%	77.8%	84.0%	81.8%	67.3%	76.5%
	White	82.2%	82.6%	84.5%	71.1%	73.1%	73.0%
	Other	75.7%	56.3%	66.7%	47.8%	63.2%	61.1%

## Technical Notes and Definitions

### UCAS undergraduate scheme

#### Adjustment

Adjustment allows applicants who have met and exceeded the terms of their conditional firm offer to seek and find a place at another provider whilst keeping their place at their original firm choice provider.

#### Clearing

Clearing is a route for applicants that are not placed and holding no offers to find a place on courses with vacancies.

#### Cycle year

The UCAS application cycle which runs from September to October the following year. For example the 2015 cycle runs from September 2014 through to October 2015.

#### End of cycle

The point in the cycle to which the numbers in this report refer, and the point at which the cycle is closed such that no more applications or offers can be made, and no more applicants can be placed. Numbers reported at the end of cycle exclude information on a small number of applicants who cancelled during the cycle.

#### Extra

Applicants who are unsuccessful in obtaining an offer or decline all offers may be eligible to apply through Extra, where they can apply to one further course at a time. Extra operates from 25 February until early July. It provides applicants who are eligible the possibility of obtaining an offer before exam results are published and Clearing starts.

#### June 30 deadline

The deadline for main scheme applications. Applicants who apply after this date will go directly into Clearing.

#### Record of Prior Acceptance (RPA)

RPA is an acceptance route used when a provider informs UCAS of applicants it has accepted outside of the normal application process (e.g. individuals who have applied directly to the provider).

### Reporting groups

#### Ethnic group

High level grouping of ethnic origin as declared by the applicant: 'White', 'Black', 'Asian', 'Mixed', 'Other', 'Unknown'. Applicants who declare themselves as 'Unknown' ethnic origin are not reported in these tables, but are included in the associated csv data file.

#### POLAR3 quintile

Developed by HEFCE, POLAR3 classifies small areas across the UK into five groups according to their level of young participation in Higher Education. Each of these groups represents around 20 per cent of young people and is ranked from Quintile 1 (areas with the lowest young participation rates, considered as the most disadvantaged) to Quintile 5 (highest young participation rates, considered most advantaged). POLAR3 is based on the participation rates of young people between 2005 and 2009 who entered Higher Education between 2005-06 and 2010-11, therefore is most suitable for applicants aged 19 and under. These groups are assigned using the postcode declared by the applicant at the time of their application. If a UK postcode is invalid, considered unsafe for measurement or there is no link to Census geography possible then the applicant is not assigned to a quintile. Applicants with no POLAR3 quintile are not reported.

#### Sex

Sex as declared by the applicant.

### **SIMD quintile**

Scottish index of multiple deprivation (SIMD) for 2012 identifies small area concentrations of multiple deprivation across all of Scotland, providing a relative measure of deprivation amongst 6505 small areas (data zones) based on 7 socio-economic domains. These small areas are classified into five groups ranked from Quintile 1 (considered the most deprived) to Quintile 5 (considered least deprived), with equal populations in each quintile. Quintiles are assigned using the postcode declared by the applicant, applicants declaring invalid postcodes are classified as 'Not assigned' and are not reported.

SIMD is only defined for applicants domiciled in Scotland, therefore any applicants domiciled outside of Scotland cannot be assigned to an SIMD quintile and so are not reported for this measure.

SIMD is only reported for providers in Scotland. Application and entry rates by SIMD are reported in the 2015 End of Cycle Report and the 2016 cycle January deadline application rate report.

### **Statistics reported in the tables**

#### **All placed applicants**

The number of applicants placed for entry into higher education at the provider through one of their choices, including any choices made through Extra, or via Adjustment, Clearing or RPA.

#### **All placed applicants per 10,000 population**

The number of total UK domiciled 18 year old placed applicants for entry into higher education at the provider divided by the number of UK 18 year olds in the population, multiplied by 10,000. This gives the number of 18 year olds, for every 10,000 in the population, that were placed at the provider through one of their choices, including any choices made through Extra, or via Adjustment, Clearing or RPA. It is an alternative way of expressing the entry rate to a provider. By referencing the underlying population this statistic shows how the number of placed applicants is changing in relation to the available pool of potential applicants and so gives the chance that somebody from the group will be placed at a provider.

This statistic is only reported for 18 year olds.

#### **Average offer rate**

The offer rate that you might expect if the predicted grades and subject choice of applicants were the only factors that influenced whether an applicant was made an offer by the provider. The average offer rate is calculated by dividing applicants according to their specific combination of grades (for A levels the best three predicted grades are used, for BTECs, International Baccalaureate and Scottish Highers and Advanced Highers, predicted grades along with any grades already achieved upon applying are used) and subject choice. For each combination the number of main scheme offers is divided by the number of main scheme applications, to give an overall offer rate. This is then multiplied by the number of applications made by the group for which the average offer rate is being calculated (for example POLAR3 quintile 1), to give an average number of offers for that group. These average number of offers are then added together across all combinations of predicted grade and subject and divided by the number of main scheme applications from the group to give the average offer rate.

The average offer rate does not attempt to control for any other factors that may play a part in the decision to make an offer, such as the subject of the qualifications studied, their relevance to a course, or the grade in each subject; higher numbers of A levels being studied; the exact profile of grades predicted; personal statements; teacher references; interviews; or any other criteria (such as work experience or portfolios) that may be part of the admissions decision.

This statistic is only reported for 18 year olds.



### Contribution of group to the average offer rate

The way in which the average offer rate is defined means that the pattern of application and offers of a group (for example POLAR3 quintile 1) will always contribute, in part, to the average offer rate for that group. When this contribution is large, the average offer rate will mainly reflect the patterns for the group, meaning that the value of the average offer rate will be similar to the offer rate, the percentage point difference statistic will be small, and any real difference between the offer rate and what might be expected given the predicted grades and subject choices of the applicants will be difficult to detect.

Values of the contribution of group to the average offer rate range between 0 and 1. The closer the value is to 1 the greater the contribution a group makes to its own average offer rate.

This statistic is only reported for 18 year olds.

### Placed June deadline applicants

An applicant who has been placed for entry into higher education at the provider through a June deadline application.

### Placed June deadline applicants per 10,000 population

The number of UK domiciled 18 year old placed June deadline applicants at the provider divided by the number of UK 18 year olds in the population, multiplied by 10,000. This gives the number of 18 year olds, for every 10,000 in the population, that were placed at the provider through one of their June deadline applications. It is an alternative way of expressing the entry rate to a provider, but for placed June deadline applicants only. By referencing the underlying population this statistic shows how the number of placed June deadline applicants is changing in relation to the available pool of potential 18 year old applicants and so gives the chance that somebody from the group will be placed at a provider through a June deadline application.

This statistic is only reported for 18 year olds.

### June deadline applications

An application (or choice) to a course in higher education to the provider that is made by the June 30 deadline. Each applicant can make up to five choices this way. The number of June deadline applications does not include choices made through the following routes: Clearing, Extra, Adjustment and RPAs. Applications made to October deadline courses received after the October deadline are not included in these statistics.

### June deadline applicants

The number of applicants that made at least one application to the provider by the June 30 deadline.

### June deadline applicants per 10,000 population

The number of UK domiciled 18 year old June deadline applicants to the provider divided by the number of UK 18 year olds in the population, multiplied by 10,000. This gives the number of 18 year olds, for every 10,000 in the population, who applied by the June 30 deadline. It is equivalent to the application rate. By referencing the underlying population this statistic shows how the number of June deadline applicants is changing in relation to the available pool of potential 18 year old applicants and so gives the chance that somebody from the group will apply to a provider by the June 30 deadline.

This statistic is only reported for 18 year olds.

### Offers

An offer is defined as a provider's decision in response to an application to offer a place to an applicant, often subject to the applicant satisfying academic and/or other criteria, via a June deadline application (i.e. does not cover choices made through the following routes: Clearing, Extra, Adjustment and RPAs).

### Offer rate

The number of offers made divided by the number of June deadline applications. This gives the proportion of all June deadline applications to the provider that received an offer.

### Percentage point difference between offer rate and average offer rate

The offer rate minus the average offer rate.

The percentage point difference can be compared to the expected range of statistical variation resulting from the calculation of the average offer rate using the Average Offer Rate Lookup Table. Where the value of the percentage point difference lies outside of this range, the percentage point difference may be considered to represent a real difference between the offer rate and the average offer rate.

### Other definitions

#### Age

This analysis uses country-specific age definitions that align with the cut off points for school and college cohorts within the different administrations of the UK. For England and Wales, ages are defined on the 31 August, for Northern Ireland on the 1 July and for Scotland on the 28 February the following year. Defining ages in this way matches the assignment of children to school cohorts. For applicants outside of the UK a cohort cut off of 31 August has been used.

#### Provider

A higher education provider - a university or college.

#### UK domiciled

Declared area of permanent residence within England, Northern Ireland, Scotland and Wales. Applicants from the Channel Islands and Isle of Man are not included.