

P65 Plymouth College of Art

Cycle years: 2010 - 2015

Cycle Reference Point: End of Cycle

Applicant coverage: UK domiciled

Reporting groups: Sex, POLAR3, ethnic group

Applicant statistics: June deadline applicants, placed June deadline applicants, all placed applicants, June deadline applicants per 10,000 population, placed June deadline applicants per 10,000 population, all placed applicants per 10,000 population

Application statistics: June deadline applications, offers, offer rate, average offer rate, percentage point difference between offer rate and average offer rate, contribution of group to the average offer rate

Non-disclosure controls: To avoid the disclosure of information about any individual the following measures are taken

- Applicants, placed applicants, applications and offers are rounded to the nearest 5.
- Applicants/placed applicants per 10,000 population figures are reported as 0 if the applicant/placed applicant figures are rounded to 0.
- All statistics related to the offer rate are not reported when the number of applications for a group is less than 10. The percentage point difference between the offer rate and the average offer rate is not reported when the number of applications for a group is less than 50.
- Offer rates are reported as 0% if there are fewer than 5 offers, and 100% if the number of offers is within 5 of the number of applications. When the offer rate is reported as 0% or 100%, it is reported in italics.

Contents:

18 year old applicants:	P.1
18 year old applications:	P.2
18 year old applicants by sex:	P.3
18 year old applications by sex:	P.4
18 year old applicants by POLAR3 quintile:	P.7
18 year old applications by POLAR3 quintile:	P.8
18 year old applicants by ethnic group:	P.11
18 year old applications by ethnic group:	P.12
Applicants (all ages):	P.15
Applications (all ages):	P.16
Applicants (all ages) by sex:	P.17
Applications (all ages) by sex:	P.18
Applicants (all ages) by POLAR3 quintile:	P.19
Applications (all ages) by POLAR3 quintile:	P.20
Applicants (all ages) by ethnic group:	P.21
Applications (all ages) by ethnic group:	P.22

P.1 18 year old applicants

Statistic	2010	2011	2012	2013	2014	2015
June deadline applicants	285	345	305	275	365	525
Placed June deadline applicants	80	90	90	90	100	175
All placed applicants	90	100	95	95	110	185
June deadline applicants per 10,000 population	3.6	4.5	3.9	3.6	4.8	6.8
Placed June deadline applicants per 10,000	1.0	1.2	1.1	1.2	1.3	2.3
All placed applicants per 10,000 population	1.2	1.3	1.2	1.3	1.5	2.4

P.2 18 year old applications

Statistic	2010	2011	2012	2013	2014	2015
June deadline applications	310	375	325	305	410	565
Offers	180	200	210	205	300	375
Offer rate	58.6%	52.8%	64.2%	67.4%	72.5%	66.2%

P.3 18 year old applicants by sex

Statistic	Sex	2010	2011	2012	2013	2014	2015
June deadline applicants	Men	105	120	90	85	100	135
	Women	180	225	210	190	260	390
Placed June deadline applicants	Men	30	25	30	25	25	50
	Women	50	65	55	65	75	125
All placed applicants	Men	35	30	35	30	30	55
	Women	55	70	60	70	80	130
June deadline applicants per 10,000 population	Men	2.7	3.0	2.3	2.2	2.6	3.4
	Women	4.6	6.0	5.6	5.2	7.2	10.4
Placed June deadline applicants per 10,000 population	Men	0.8	0.6	0.8	0.6	0.6	1.3
	Women	1.3	1.8	1.5	1.8	2.0	3.3
All placed applicants per 10,000 population	Men	0.9	0.7	0.8	0.7	0.8	1.4
	Women	1.4	1.9	1.6	1.8	2.1	3.5

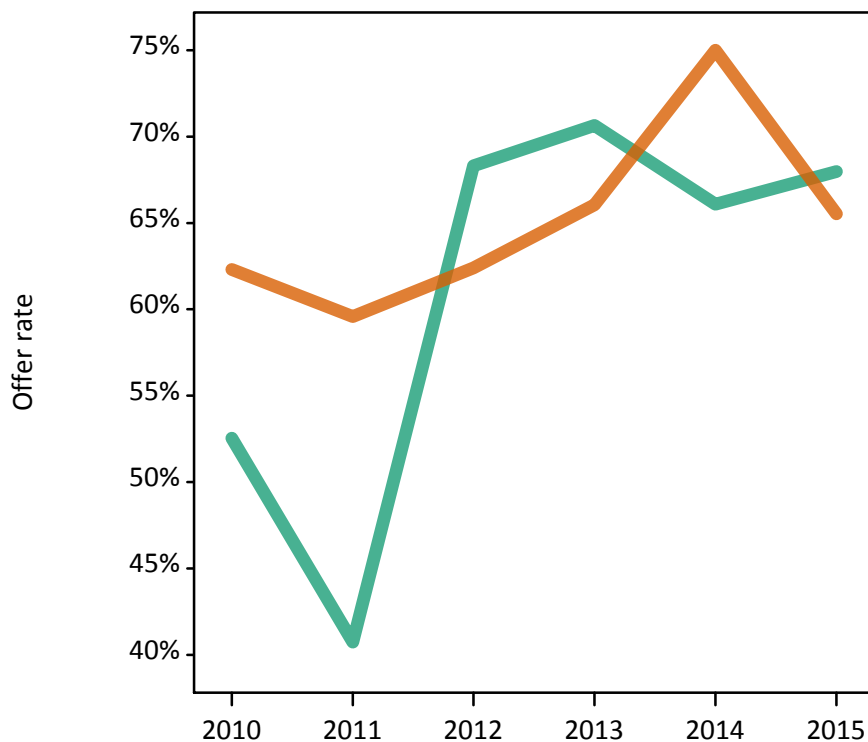
P.4 18 year old applications by sex

Statistic	Sex	2010	2011	2012	2013	2014	2015
June deadline applications	Men	120	135	100	90	115	155
	Women	190	240	225	215	295	410
Offers	Men	60	55	70	65	75	105
	Women	120	145	140	140	220	270
Offer rate	Men	52.5%	40.7%	68.3%	70.7%	66.1%	68.0%
	Women	62.3%	59.6%	62.4%	66.0%	75.0%	65.5%
Average offer rate	Men	58.3%	48.7%	67.1%	68.3%	67.7%	65.8%
	Women	58.7%	55.1%	62.9%	67.1%	74.4%	66.3%
Percentage point difference between offer rate and average offer rate	Men	-5.8	-7.9	1.2	2.4	-1.7	2.2
	Women	3.6	4.5	-0.5	-1.0	0.6	-0.8
Contribution of group to the average offer rate	Men	0.525	0.462	0.559	0.529	0.532	0.433
	Women	0.707	0.697	0.803	0.798	0.818	0.789

P.5 18 year old offer rate by sex

Note: The line for a group is not plotted when that group made fewer than 10 applications in any of the years from 2010-2015.

Men
Women



P.6 Percentage point difference between 18 year old offer rate and average offer rate by sex

Note: The line for a group is not plotted when that group made fewer than 50 applications in any of the years from 2010-2015.

Men
Women



P.7 18 year old applicants by POLAR3 quintile

Statistic	POLAR3 quintile	2010	2011	2012	2013	2014	2015
June deadline applicants	Quintile 1	40	50	50	50	60	100
	Quintile 2	60	65	60	50	70	110
	Quintile 3	65	85	80	70	75	105
	Quintile 4	75	85	70	65	105	120
	Quintile 5	45	60	40	40	55	80
Placed June deadline applicants	Quintile 1	15	15	20	20	25	40
	Quintile 2	20	15	20	15	20	40
	Quintile 3	15	30	20	25	20	30
	Quintile 4	20	15	20	20	25	40
	Quintile 5	10	15	10	10	10	30
All placed applicants	Quintile 1	15	15	20	20	30	40
	Quintile 2	20	15	20	15	25	40
	Quintile 3	20	35	20	25	20	30
	Quintile 4	25	20	25	20	30	45
	Quintile 5	10	15	10	15	10	30
June deadline applicants per 10,000 population	Quintile 1	2.8	3.4	3.7	3.5	4.4	7.2
	Quintile 2	3.8	4.3	4.1	3.5	4.6	7.5
	Quintile 3	4.1	5.5	5.1	4.5	4.9	7.0
	Quintile 4	4.6	5.4	4.3	4.3	6.9	7.7
	Quintile 5	2.8	3.7	2.5	2.5	3.4	4.9
Placed June deadline applicants per 10,000 population	Quintile 1	0.9	1.0	1.3	1.5	1.9	2.9
	Quintile 2	1.2	0.9	1.3	1.0	1.4	2.6
	Quintile 3	1.1	2.1	1.3	1.6	1.2	2.0
	Quintile 4	1.4	1.1	1.4	1.2	1.7	2.5
	Quintile 5	0.6	0.8	0.5	0.7	0.5	1.7
All placed applicants per 10,000 population	Quintile 1	0.9	1.1	1.3	1.5	2.1	2.9
	Quintile 2	1.4	0.9	1.4	1.0	1.6	2.8
	Quintile 3	1.3	2.3	1.4	1.7	1.5	2.1
	Quintile 4	1.6	1.3	1.6	1.2	1.8	2.7
	Quintile 5	0.6	0.9	0.5	0.9	0.5	1.7

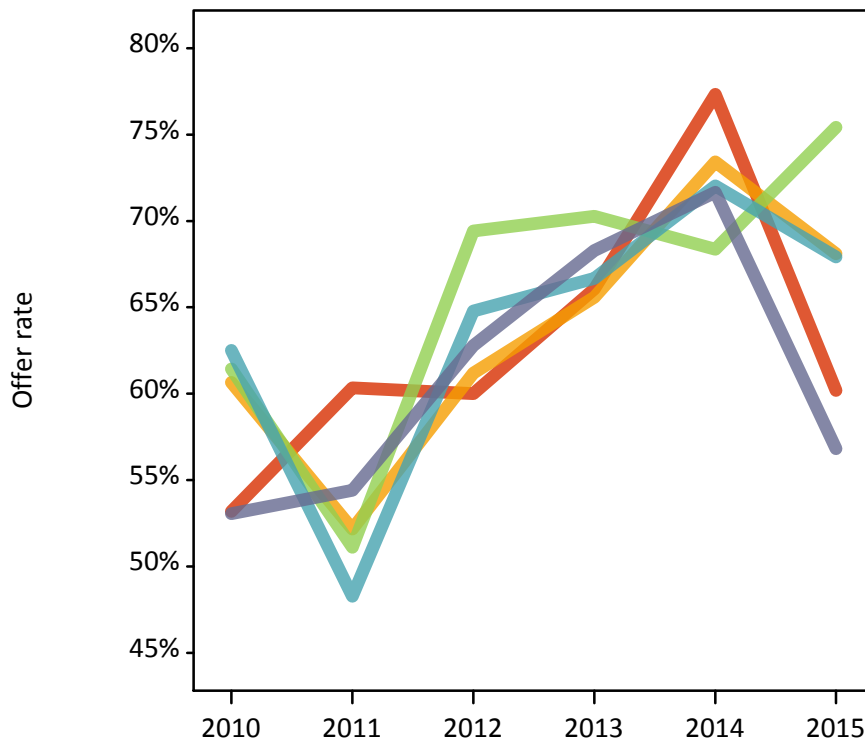
P.8 18 year old applications by POLAR3 quintile

Statistic	POLAR3 quintile	2010	2011	2012	2013	2014	2015
June deadline applications	Quintile 1	45	60	60	55	75	110
	Quintile 2	60	70	65	60	80	115
	Quintile 3	70	90	85	75	80	120
	Quintile 4	80	85	70	75	120	135
	Quintile 5	50	70	45	40	60	90
Offers	Quintile 1	25	35	35	35	60	65
	Quintile 2	35	35	40	40	60	80
	Quintile 3	45	45	60	50	55	90
	Quintile 4	50	40	45	50	85	90
	Quintile 5	25	35	25	30	45	50
Offer rate	Quintile 1	53.2%	60.3%	60.0%	66.1%	77.3%	60.2%
	Quintile 2	60.7%	52.2%	61.2%	65.6%	73.4%	68.1%
	Quintile 3	61.4%	51.1%	69.4%	70.3%	68.4%	75.4%
	Quintile 4	62.5%	48.3%	64.8%	66.7%	72.0%	67.9%
	Quintile 5	53.1%	54.4%	62.8%	68.3%	71.7%	56.8%
Average offer rate	Quintile 1	62.4%	52.3%	67.1%	65.1%	74.8%	67.7%
	Quintile 2	59.8%	53.1%	63.5%	64.8%	72.4%	62.9%
	Quintile 3	58.6%	55.7%	66.9%	67.7%	72.9%	69.6%
	Quintile 4	58.4%	49.3%	59.4%	67.5%	71.3%	64.7%
	Quintile 5	56.2%	52.9%	63.1%	73.8%	71.5%	67.0%
Percentage point difference between offer rate and average offer rate	Quintile 1	N/A	8.0	-7.1	1.0	2.5	-7.6
	Quintile 2	0.9	-0.9	-2.3	0.8	1.0	5.2
	Quintile 3	2.9	-4.6	2.5	2.5	-4.6	5.8
	Quintile 4	4.1	-1.1	5.4	-0.8	0.7	3.2
	Quintile 5	N/A	1.5	N/A	N/A	0.1	-10.2
Contribution of group to the average offer rate	Quintile 1	0.322	0.298	0.359	0.337	0.331	0.325
	Quintile 2	0.374	0.292	0.350	0.372	0.340	0.321
	Quintile 3	0.387	0.329	0.390	0.420	0.359	0.316
	Quintile 4	0.416	0.375	0.381	0.414	0.447	0.357
	Quintile 5	0.367	0.342	0.365	0.287	0.435	0.370

P.9 18 year old offer rate by POLAR3 quintile

Note: The line for a group is not plotted when that group made fewer than 10 applications in any of the years from 2010-2015.

- Quintile 1
- Quintile 2
- Quintile 3
- Quintile 4
- Quintile 5



P.10 Percentage point difference between 18 year old offer rate and average offer rate by POLAR3 quintile

Note: The line for a group is not plotted when that group made fewer than 50 applications in any of the years from 2010-2015.

- Quintile 1
- Quintile 2
- Quintile 3
- Quintile 4
- Quintile 5



P.11 18 year old applicants by ethnic group

Statistic	Ethnic group	2010	2011	2012	2013	2014	2015
June deadline applicants	Asian	5	5	5	10	5	15
	Black	0	5	5	5	5	10
	Mixed	5	10	5	5	5	20
	White	270	320	290	260	350	475
	Other	0	0	0	0	0	0
Placed June deadline applicants	Asian	0	0	0	5	0	0
	Black	0	0	0	0	0	0
	Mixed	5	5	0	0	0	5
	White	75	85	85	85	95	165
	Other	0	0	0	0	0	0
All placed applicants	Asian	0	0	0	5	0	0
	Black	0	0	0	0	0	0
	Mixed	5	5	0	0	0	5
	White	85	95	95	90	105	175
	Other	0	0	0	0	0	0
June deadline applicants per 10,000 population	Asian	0.6	0.8	0.8	1.2	0.4	1.8
	Black	0.0	2.2	1.8	1.0	2.0	3.5
	Mixed	3.0	5.0	1.9	2.6	1.7	7.1
	White	4.0	5.0	4.5	4.1	5.6	7.6
	Other	0.0	0.0	0.0	0.0	0.0	0.0
Placed June deadline applicants per 10,000 population	Asian	0.0	0.0	0.0	0.5	0.0	0.0
	Black	0.0	0.0	0.0	0.0	0.0	0.0
	Mixed	1.3	2.1	0.0	0.0	0.0	1.6
	White	1.1	1.3	1.3	1.4	1.6	2.7
	Other	0.0	0.0	0.0	0.0	0.0	0.0
All placed applicants per 10,000 population	Asian	0.0	0.0	0.0	0.5	0.0	0.0
	Black	0.0	0.0	0.0	0.0	0.0	0.0
	Mixed	1.7	2.1	0.0	0.0	0.0	1.6
	White	1.3	1.5	1.4	1.5	1.7	2.8
	Other	0.0	0.0	0.0	0.0	0.0	0.0

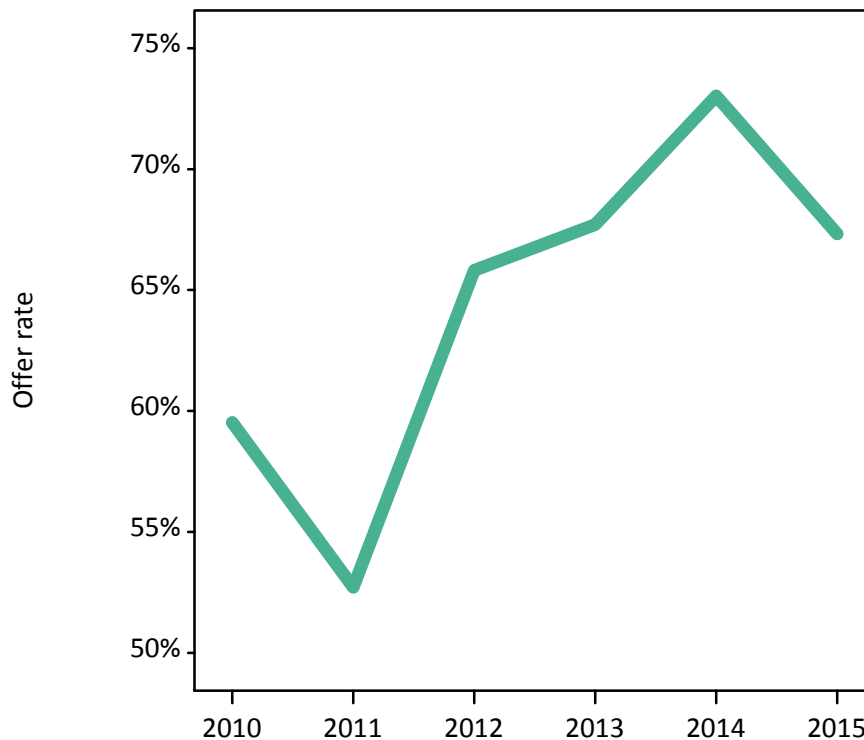
P.12 18 year old applications by ethnic group

Statistic	Ethnic group	2010	2011	2012	2013	2014	2015
June deadline applications	Asian	5	5	5	10	5	15
	Black	0	5	5	5	5	10
	Mixed	5	10	5	5	5	25
	White	295	350	310	290	395	515
	Other	0	0	0	0	0	0
Offers	Asian	0	5	0	5	5	5
	Black	0	0	0	0	0	5
	Mixed	5	5	5	5	5	15
	White	175	185	205	195	285	345
	Other	0	0	0	0	0	0
Offer rate	Asian	N/A	N/A	N/A	N/A	N/A	53.8%
	Black	N/A	N/A	N/A	N/A	N/A	54.5%
	Mixed	N/A	58.3%	N/A	N/A	N/A	58.3%
	White	59.5%	52.7%	65.8%	67.7%	73.0%	67.3%
	Other	N/A	N/A	N/A	N/A	N/A	N/A
Average offer rate	Asian	N/A	N/A	N/A	N/A	N/A	61.3%
	Black	N/A	N/A	N/A	N/A	N/A	65.6%
	Mixed	N/A	60.7%	N/A	N/A	N/A	60.0%
	White	58.4%	52.4%	64.5%	68.1%	72.7%	66.6%
	Other	N/A	N/A	N/A	N/A	N/A	N/A
Percentage point difference between offer rate and average offer rate	Asian	N/A	N/A	N/A	N/A	N/A	N/A
	Black	N/A	N/A	N/A	N/A	N/A	N/A
	Mixed	N/A	N/A	N/A	N/A	N/A	N/A
	White	1.1	0.3	1.3	-0.3	0.3	0.7
	Other	N/A	N/A	N/A	N/A	N/A	N/A
Contribution of group to the average offer rate	Asian	N/A	N/A	N/A	N/A	N/A	0.301
	Black	N/A	N/A	N/A	N/A	N/A	0.146
	Mixed	N/A	0.129	N/A	N/A	N/A	0.190
	White	0.960	0.951	0.960	0.952	0.964	0.924
	Other	N/A	N/A	N/A	N/A	N/A	N/A

P.13 18 year old offer rate by ethnic group

Note: The line for a group is not plotted when that group made fewer than 10 applications in any of the years from 2010-2015.

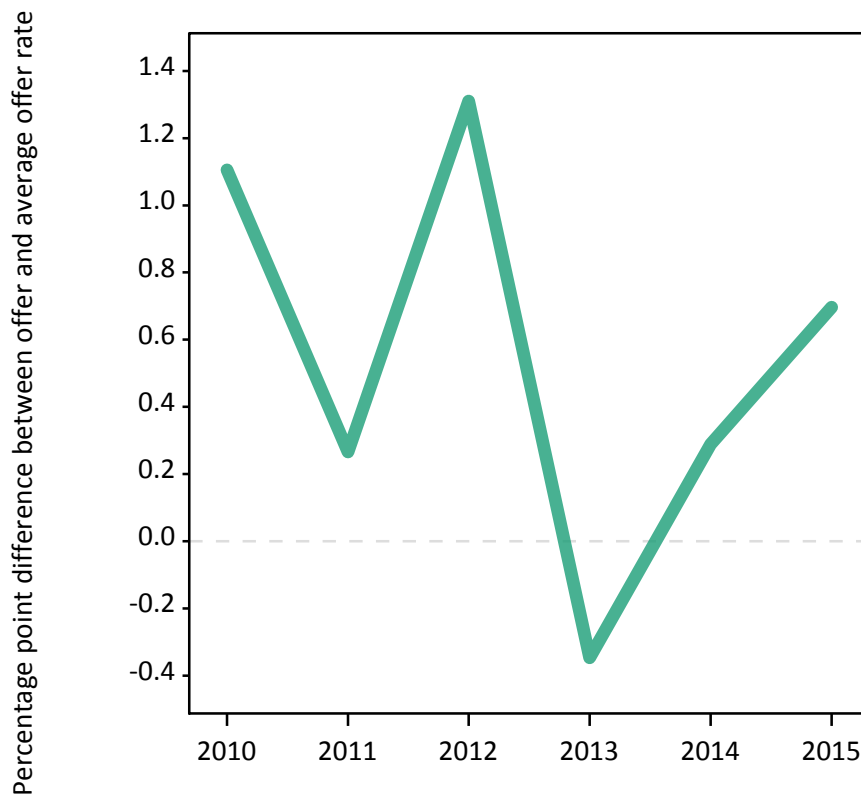
- Asian
- Black
- Mixed
- White
- Other



P.14 Percentage point difference between 18 year old offer rate and average offer rate by ethnic group

Note: The line for a group is not plotted when that group made fewer than 50 applications in any of the years from 2010-2015.

- Asian
- Black
- Mixed
- White
- Other



P.15 Applicants (all ages)

Statistic	2010	2011	2012	2013	2014	2015
June deadline applicants	765	1,000	955	815	1,000	1,210
Placed June deadline applicants	265	270	330	320	345	460
All placed applicants	320	305	370	370	405	505

P.16 Applications (all ages)

Statistic	2010	2011	2012	2013	2014	2015
June deadline applications	840	1,090	1,035	910	1,115	1,330
Offers	490	550	670	635	810	895
Offer rate	58.6%	50.5%	64.8%	69.8%	72.8%	67.4%

P.17 Applicants (all ages) by sex

Statistic	Sex	2010	2011	2012	2013	2014	2015
June deadline applicants	Men	325	395	355	285	315	370
	Women	440	605	600	525	685	840
Placed June deadline applicants	Men	115	100	130	125	115	150
	Women	150	170	200	195	230	310
All placed applicants	Men	135	115	145	145	145	165
	Women	185	195	225	220	255	345

P.18 Applications (all ages) by sex

Statistic	Sex	2010	2011	2012	2013	2014	2015
June deadline applications	Men	360	440	390	320	350	415
	Women	480	650	650	590	765	915
Offers	Men	200	200	255	225	250	290
	Women	290	350	415	410	560	605
Offer rate	Men	56.1%	45.7%	65.7%	69.7%	71.3%	70.2%
	Women	60.5%	53.7%	64.3%	69.8%	73.4%	66.2%

P.19 Applicants (all ages) by POLAR3 quintile

Statistic	POLAR3 quintile	2010	2011	2012	2013	2014	2015
June deadline applicants	Quintile 1	125	170	175	160	185	235
	Quintile 2	135	185	185	160	185	240
	Quintile 3	170	240	200	190	200	255
	Quintile 4	195	235	235	180	265	290
	Quintile 5	130	165	160	115	160	185
Placed June deadline applicants	Quintile 1	60	50	70	80	85	115
	Quintile 2	45	45	70	65	70	90
	Quintile 3	50	75	60	80	75	90
	Quintile 4	75	60	85	65	90	110
	Quintile 5	35	40	40	30	25	60
All placed applicants	Quintile 1	75	55	80	90	95	125
	Quintile 2	60	50	75	75	80	100
	Quintile 3	65	90	70	85	90	100
	Quintile 4	85	70	95	80	105	120
	Quintile 5	35	45	50	40	30	60

P.20 Applications (all ages) by POLAR3 quintile

Statistic	POLAR3 quintile	2010	2011	2012	2013	2014	2015
June deadline applications	Quintile 1	140	190	195	185	220	270
	Quintile 2	145	200	210	185	205	255
	Quintile 3	190	255	215	215	220	280
	Quintile 4	210	260	250	200	300	315
	Quintile 5	145	175	160	125	170	200
Offers	Quintile 1	90	100	125	130	160	185
	Quintile 2	85	105	125	125	145	175
	Quintile 3	110	120	140	150	170	195
	Quintile 4	130	125	170	140	215	220
	Quintile 5	80	95	110	90	125	120
Offer rate	Quintile 1	63.1%	52.9%	64.4%	69.2%	72.5%	68.0%
	Quintile 2	56.8%	52.0%	61.1%	68.3%	69.9%	68.8%
	Quintile 3	58.5%	47.5%	65.0%	69.8%	76.7%	68.4%
	Quintile 4	61.3%	48.3%	67.5%	71.2%	71.0%	69.4%
	Quintile 5	53.4%	54.2%	66.7%	71.0%	75.0%	60.5%

P.21 Applicants (all ages) by ethnic group

Statistic	Ethnic group	2010	2011	2012	2013	2014	2015
June deadline applicants	Asian	10	20	15	15	15	30
	Black	15	20	20	15	20	20
	Mixed	15	35	25	25	25	45
	White	720	920	885	750	935	1,100
	Other	5	5	10	5	5	5
Placed June deadline applicants	Asian	5	5	0	5	5	5
	Black	5	0	5	5	0	5
	Mixed	5	10	5	10	5	10
	White	255	255	315	305	330	435
	Other	0	0	0	0	0	0
All placed applicants	Asian	5	5	0	5	5	5
	Black	5	0	5	5	0	5
	Mixed	10	10	10	10	10	15
	White	305	290	355	345	385	475
	Other	0	0	0	5	0	0

P.22 Applications (all ages) by ethnic group

Statistic	Ethnic group	2010	2011	2012	2013	2014	2015
June deadline applications	Asian	10	20	15	15	15	30
	Black	15	20	20	15	20	20
	Mixed	15	35	25	25	25	50
	White	795	1,010	960	845	1,045	1,215
	Other	5	5	10	5	5	5
Offers	Asian	5	10	5	10	15	20
	Black	5	5	5	5	10	10
	Mixed	5	20	20	15	20	30
	White	475	520	635	595	765	830
	Other	0	0	5	5	5	0
Offer rate	Asian	N/A	42.1%	33.3%	58.8%	100.0%	68.8%
	Black	0.0%	0.0%	26.3%	53.8%	42.1%	45.0%
	Mixed	46.2%	51.4%	81.5%	68.0%	66.7%	60.4%
	White	59.7%	51.2%	65.8%	70.2%	73.3%	68.0%
	Other	N/A	N/A	N/A	N/A	N/A	N/A

Technical Notes and Definitions

UCAS undergraduate scheme

Adjustment

Adjustment allows applicants who have met and exceeded the terms of their conditional firm offer to seek and find a place at another provider whilst keeping their place at their original firm choice provider.

Clearing

Clearing is a route for applicants that are not placed and holding no offers to find a place on courses with vacancies.

Cycle year

The UCAS application cycle which runs from September to October the following year. For example the 2015 cycle runs from September 2014 through to October 2015.

End of cycle

The point in the cycle to which the numbers in this report refer, and the point at which the cycle is closed such that no more applications or offers can be made, and no more applicants can be placed. Numbers reported at the end of cycle exclude information on a small number of applicants who cancelled during the cycle.

Extra

Applicants who are unsuccessful in obtaining an offer or decline all offers may be eligible to apply through Extra, where they can apply to one further course at a time. Extra operates from 25 February until early July. It provides applicants who are eligible the possibility of obtaining an offer before exam results are published and Clearing starts.

June 30 deadline

The deadline for main scheme applications. Applicants who apply after this date will go directly into Clearing.

Record of Prior Acceptance (RPA)

RPA is an acceptance route used when a provider informs UCAS of applicants it has accepted outside of the normal application process (e.g. individuals who have applied directly to the provider).

Reporting groups

Ethnic group

High level grouping of ethnic origin as declared by the applicant: 'White', 'Black', 'Asian', 'Mixed', 'Other', 'Unknown'. Applicants who declare themselves as 'Unknown' ethnic origin are not reported in these tables, but are included in the associated csv data file.

POLAR3 quintile

Developed by HEFCE, POLAR3 classifies small areas across the UK into five groups according to their level of young participation in Higher Education. Each of these groups represents around 20 per cent of young people and is ranked from Quintile 1 (areas with the lowest young participation rates, considered as the most disadvantaged) to Quintile 5 (highest young participation rates, considered most advantaged). POLAR3 is based on the participation rates of young people between 2005 and 2009 who entered Higher Education between 2005-06 and 2010-11, therefore is most suitable for applicants aged 19 and under. These groups are assigned using the postcode declared by the applicant at the time of their application. If a UK postcode is invalid, considered unsafe for measurement or there is no link to Census geography possible then the applicant is not assigned to a quintile. Applicants with no POLAR3 quintile are not reported.

Sex

Sex as declared by the applicant.

SIMD quintile

Scottish index of multiple deprivation (SIMD) for 2012 identifies small area concentrations of multiple deprivation across all of Scotland, providing a relative measure of deprivation amongst 6505 small areas (data zones) based on 7 socio-economic domains. These small areas are classified into five groups ranked from Quintile 1 (considered the most deprived) to Quintile 5 (considered least deprived), with equal populations in each quintile. Quintiles are assigned using the postcode declared by the applicant, applicants declaring invalid postcodes are classified as 'Not assigned' and are not reported.

SIMD is only defined for applicants domiciled in Scotland, therefore any applicants domiciled outside of Scotland cannot be assigned to an SIMD quintile and so are not reported for this measure.

SIMD is only reported for providers in Scotland. Application and entry rates by SIMD are reported in the 2015 End of Cycle Report and the 2016 cycle January deadline application rate report.

Statistics reported in the tables

All placed applicants

The number of applicants placed for entry into higher education at the provider through one of their choices, including any choices made through Extra, or via Adjustment, Clearing or RPA.

All placed applicants per 10,000 population

The number of total UK domiciled 18 year old placed applicants for entry into higher education at the provider divided by the number of UK 18 year olds in the population, multiplied by 10,000. This gives the number of 18 year olds, for every 10,000 in the population, that were placed at the provider through one of their choices, including any choices made through Extra, or via Adjustment, Clearing or RPA. It is an alternative way of expressing the entry rate to a provider. By referencing the underlying population this statistic shows how the number of placed applicants is changing in relation to the available pool of potential applicants and so gives the chance that somebody from the group will be placed at a provider.

This statistic is only reported for 18 year olds.

Average offer rate

The offer rate that you might expect if the predicted grades and subject choice of applicants were the only factors that influenced whether an applicant was made an offer by the provider. The average offer rate is calculated by dividing applicants according to their specific combination of grades (for A levels the best three predicted grades are used, for BTECs, International Baccalaureate and Scottish Highers and Advanced Highers, predicted grades along with any grades already achieved upon applying are used) and subject choice. For each combination the number of main scheme offers is divided by the number of main scheme applications, to give an overall offer rate. This is then multiplied by the number of applications made by the group for which the average offer rate is being calculated (for example POLAR3 quintile 1), to give an average number of offers for that group. These average number of offers are then added together across all combinations of predicted grade and subject and divided by the number of main scheme applications from the group to give the average offer rate.

The average offer rate does not attempt to control for any other factors that may play a part in the decision to make an offer, such as the subject of the qualifications studied, their relevance to a course, or the grade in each subject; higher numbers of A levels being studied; the exact profile of grades predicted; personal statements; teacher references; interviews; or any other criteria (such as work experience or portfolios) that may be part of the admissions decision.

This statistic is only reported for 18 year olds.

Contribution of group to the average offer rate

The way in which the average offer rate is defined means that the pattern of application and offers of a group (for example POLAR3 quintile 1) will always contribute, in part, to the average offer rate for that group. When this contribution is large, the average offer rate will mainly reflect the patterns for the group, meaning that the value of the average offer rate will be similar to the offer rate, the percentage point difference statistic will be small, and any real difference between the offer rate and what might be expected given the predicted grades and subject choices of the applicants will be difficult to detect.

Values of the contribution of group to the average offer rate range between 0 and 1. The closer the value is to 1 the greater the contribution a group makes to its own average offer rate.

This statistic is only reported for 18 year olds.

Placed June deadline applicants

An applicant who has been placed for entry into higher education at the provider through a June deadline application.

Placed June deadline applicants per 10,000 population

The number of UK domiciled 18 year old placed June deadline applicants at the provider divided by the number of UK 18 year olds in the population, multiplied by 10,000. This gives the number of 18 year olds, for every 10,000 in the population, that were placed at the provider through one of their June deadline applications. It is an alternative way of expressing the entry rate to a provider, but for placed June deadline applicants only. By referencing the underlying population this statistic shows how the number of placed June deadline applicants is changing in relation to the available pool of potential 18 year old applicants and so gives the chance that somebody from the group will be placed at a provider through a June deadline application.

This statistic is only reported for 18 year olds.

June deadline applications

An application (or choice) to a course in higher education to the provider that is made by the June 30 deadline. Each applicant can make up to five choices this way. The number of June deadline applications does not include choices made through the following routes: Clearing, Extra, Adjustment and RPAs. Applications made to October deadline courses received after the October deadline are not included in these statistics.

June deadline applicants

The number of applicants that made at least one application to the provider by the June 30 deadline.

June deadline applicants per 10,000 population

The number of UK domiciled 18 year old June deadline applicants to the provider divided by the number of UK 18 year olds in the population, multiplied by 10,000. This gives the number of 18 year olds, for every 10,000 in the population, who applied by the June 30 deadline. It is equivalent to the application rate. By referencing the underlying population this statistic shows how the number of June deadline applicants is changing in relation to the available pool of potential 18 year old applicants and so gives the chance that somebody from the group will apply to a provider by the June 30 deadline.

This statistic is only reported for 18 year olds.

Offers

An offer is defined as a provider's decision in response to an application to offer a place to an applicant, often subject to the applicant satisfying academic and/or other criteria, via a June deadline application (i.e. does not cover choices made through the following routes: Clearing, Extra, Adjustment and RPAs).

Offer rate

The number of offers made divided by the number of June deadline applications. This gives the proportion of all June deadline applications to the provider that received an offer.

Percentage point difference between offer rate and average offer rate

The offer rate minus the average offer rate.

The percentage point difference can be compared to the expected range of statistical variation resulting from the calculation of the average offer rate using the Average Offer Rate Lookup Table. Where the value of the percentage point difference lies outside of this range, the percentage point difference may be considered to represent a real difference between the offer rate and the average offer rate.

Other definitions

Age

This analysis uses country-specific age definitions that align with the cut off points for school and college cohorts within the different administrations of the UK. For England and Wales, ages are defined on the 31 August, for Northern Ireland on the 1 July and for Scotland on the 28 February the following year. Defining ages in this way matches the assignment of children to school cohorts. For applicants outside of the UK a cohort cut off of 31 August has been used.

Provider

A higher education provider - a university or college.

UK domiciled

Declared area of permanent residence within England, Northern Ireland, Scotland and Wales. Applicants from the Channel Islands and Isle of Man are not included.