

O33 Oxford University

Cycle years: 2010 - 2015

Cycle Reference Point: End of Cycle

Applicant coverage: UK domiciled

Reporting groups: Sex, POLAR3, ethnic group

Applicant statistics: June deadline applicants, placed June deadline applicants, all placed applicants, June deadline applicants per 10,000 population, placed June deadline applicants per 10,000 population, all placed applicants per 10,000 population

Application statistics: June deadline applications, offers, offer rate, average offer rate, percentage point difference between offer rate and average offer rate, contribution of group to the average offer rate

Non-disclosure controls: To avoid the disclosure of information about any individual the following measures are taken

- Applicants, placed applicants, applications and offers are rounded to the nearest 5.
- Applicants/placed applicants per 10,000 population figures are reported as 0 if the applicant/placed applicant figures are rounded to 0.
- All statistics related to the offer rate are not reported when the number of applications for a group is less than 10. The percentage point difference between the offer rate and the average offer rate is not reported when the number of applications for a group is less than 50.
- Offer rates are reported as 0% if there are fewer than 5 offers, and 100% if the number of offers is within 5 of the number of applications. When the offer rate is reported as 0% or 100%, it is reported in italics.

Contents:

18 year old applicants:	P.1
18 year old applications:	P.2
18 year old applicants by sex:	P.3
18 year old applications by sex:	P.4
18 year old applicants by POLAR3 quintile:	P.7
18 year old applications by POLAR3 quintile:	P.8
18 year old applicants by ethnic group:	P.11
18 year old applications by ethnic group:	P.12
Applicants (all ages):	P.15
Applications (all ages):	P.16
Applicants (all ages) by sex:	P.17
Applications (all ages) by sex:	P.18
Applicants (all ages) by POLAR3 quintile:	P.19
Applications (all ages) by POLAR3 quintile:	P.20
Applicants (all ages) by ethnic group:	P.21
Applications (all ages) by ethnic group:	P.22

P.1 18 year old applicants

Statistic	2010	2011	2012	2013	2014	2015
June deadline applicants	10,275	10,005	10,110	9,715	9,695	10,015
Placed June deadline applicants	2,240	2,235	2,325	2,225	2,200	2,200
All placed applicants	2,240	2,240	2,330	2,225	2,205	2,210
June deadline applicants per 10,000 population	130.1	129.9	130.7	127.6	128.7	130.7
Placed June deadline applicants per 10,000	28.3	29.0	30.1	29.3	29.2	28.7
All placed applicants per 10,000 population	28.4	29.1	30.1	29.3	29.3	28.8

P.2 18 year old applications

Statistic	2010	2011	2012	2013	2014	2015
June deadline applications	10,275	10,005	10,110	9,715	9,695	10,015
Offers	2,415	2,405	2,515	2,425	2,465	2,480
Offer rate	23.5%	24.0%	24.9%	25.0%	25.4%	24.8%

P.3 18 year old applicants by sex

Statistic	Sex	2010	2011	2012	2013	2014	2015
June deadline applicants	Men	5,345	5,135	5,065	4,935	4,980	5,080
	Women	4,930	4,870	5,045	4,780	4,710	4,935
Placed June deadline applicants	Men	1,240	1,175	1,210	1,135	1,180	1,145
	Women	1,000	1,060	1,115	1,090	1,015	1,055
All placed applicants	Men	1,245	1,175	1,215	1,135	1,185	1,150
	Women	1,000	1,060	1,115	1,090	1,020	1,060
June deadline applicants per 10,000 population	Men	133.1	130.4	127.7	126.4	128.7	129.4
	Women	127.1	129.4	133.8	129.0	128.7	132.0
Placed June deadline applicants per 10,000 population	Men	30.9	29.9	30.6	29.1	30.5	29.1
	Women	25.7	28.2	29.5	29.4	27.8	28.3
All placed applicants per 10,000 population	Men	30.9	29.9	30.6	29.1	30.6	29.3
	Women	25.8	28.2	29.6	29.4	27.9	28.4

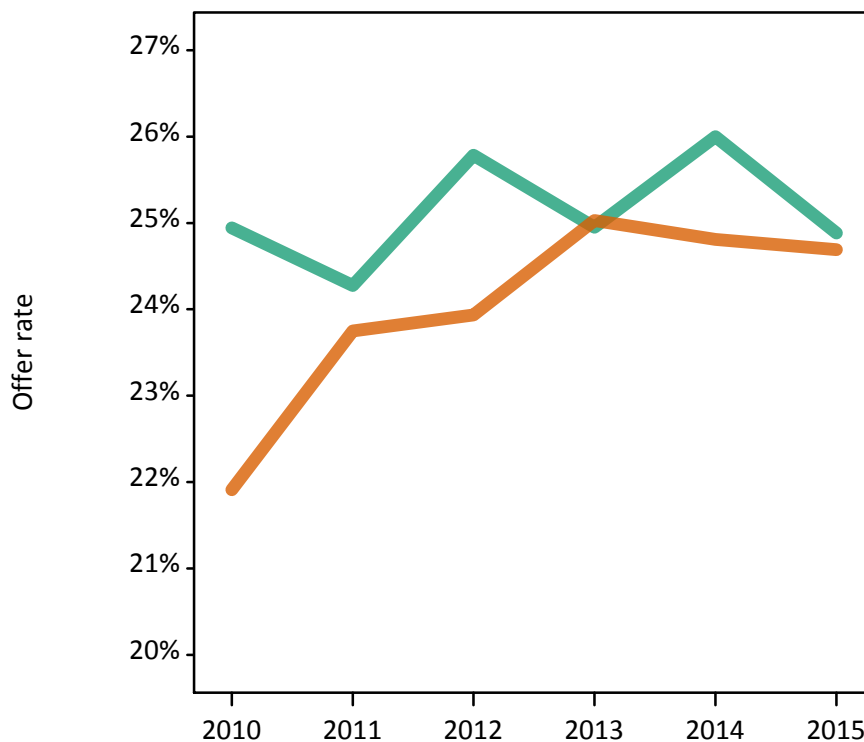
P.4 18 year old applications by sex

Statistic	Sex	2010	2011	2012	2013	2014	2015
June deadline applications	Men	5,345	5,135	5,065	4,935	4,980	5,080
	Women	4,930	4,870	5,045	4,780	4,710	4,935
Offers	Men	1,335	1,245	1,305	1,230	1,295	1,265
	Women	1,080	1,155	1,205	1,195	1,170	1,220
Offer rate	Men	24.9%	24.3%	25.8%	24.9%	26.0%	24.9%
	Women	21.9%	23.7%	23.9%	25.0%	24.8%	24.7%
Average offer rate	Men	23.8%	23.7%	25.0%	24.6%	25.2%	24.2%
	Women	23.1%	24.3%	24.7%	25.4%	25.6%	25.4%
Percentage point difference between offer rate and average offer rate	Men	1.1	0.5	0.8	0.4	0.8	0.7
	Women	-1.2	-0.6	-0.8	-0.4	-0.8	-0.7
Contribution of group to the average offer rate	Men	0.585	0.583	0.573	0.585	0.593	0.595
	Women	0.550	0.561	0.571	0.572	0.569	0.583

P.5 18 year old offer rate by sex

Note: The line for a group is not plotted when that group made fewer than 10 applications in any of the years from 2010-2015.

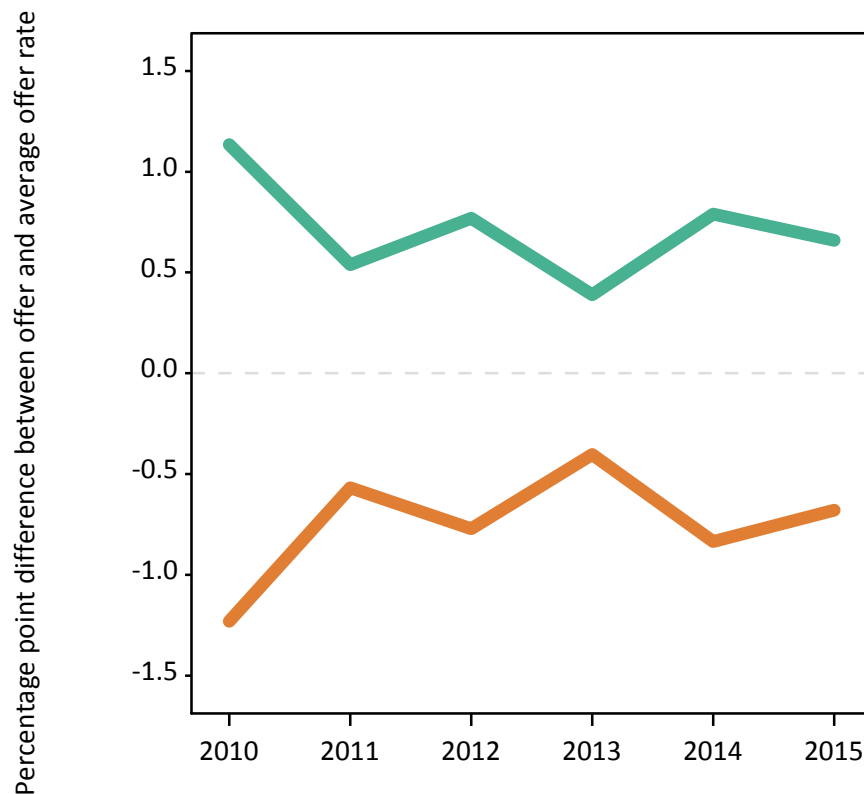
Men
Women



P.6 Percentage point difference between 18 year old offer rate and average offer rate by sex

Note: The line for a group is not plotted when that group made fewer than 50 applications in any of the years from 2010-2015.

Men
Women



P.7 18 year old applicants by POLAR3 quintile

Statistic	POLAR3 quintile	2010	2011	2012	2013	2014	2015
June deadline applicants	Quintile 1	410	415	380	350	415	410
	Quintile 2	810	825	855	765	820	845
	Quintile 3	1,425	1,365	1,410	1,395	1,410	1,330
	Quintile 4	2,380	2,345	2,400	2,240	2,260	2,385
	Quintile 5	5,220	5,035	5,040	4,945	4,770	5,005
Placed June deadline applicants	Quintile 1	65	75	70	50	75	70
	Quintile 2	155	145	160	170	160	180
	Quintile 3	265	275	290	265	265	230
	Quintile 4	465	490	540	495	520	520
	Quintile 5	1,275	1,245	1,255	1,245	1,175	1,195
All placed applicants	Quintile 1	65	75	70	50	75	70
	Quintile 2	155	145	160	170	160	180
	Quintile 3	265	275	290	265	270	235
	Quintile 4	470	490	545	495	520	520
	Quintile 5	1,280	1,250	1,255	1,245	1,175	1,205
June deadline applicants per 10,000 population	Quintile 1	27.8	28.9	26.7	25.0	29.9	29.3
	Quintile 2	52.5	54.9	57.0	51.8	55.9	56.9
	Quintile 3	89.7	88.6	91.2	91.6	93.8	86.5
	Quintile 4	149.5	149.7	151.1	143.2	146.5	152.5
	Quintile 5	308.0	304.1	299.9	299.1	292.5	299.0
Placed June deadline applicants per 10,000 population	Quintile 1	4.4	5.1	5.0	3.5	5.5	5.1
	Quintile 2	10.2	9.6	10.7	11.5	10.9	12.1
	Quintile 3	16.7	17.9	18.7	17.4	17.7	15.1
	Quintile 4	29.3	31.3	34.2	31.5	33.8	33.1
	Quintile 5	75.3	75.3	74.6	75.4	71.9	71.5
All placed applicants per 10,000 population	Quintile 1	4.5	5.1	5.0	3.5	5.5	5.1
	Quintile 2	10.2	9.6	10.7	11.5	10.9	12.1
	Quintile 3	16.7	17.9	18.8	17.4	17.8	15.2
	Quintile 4	29.4	31.4	34.2	31.5	33.9	33.3
	Quintile 5	75.5	75.4	74.6	75.4	72.1	71.9

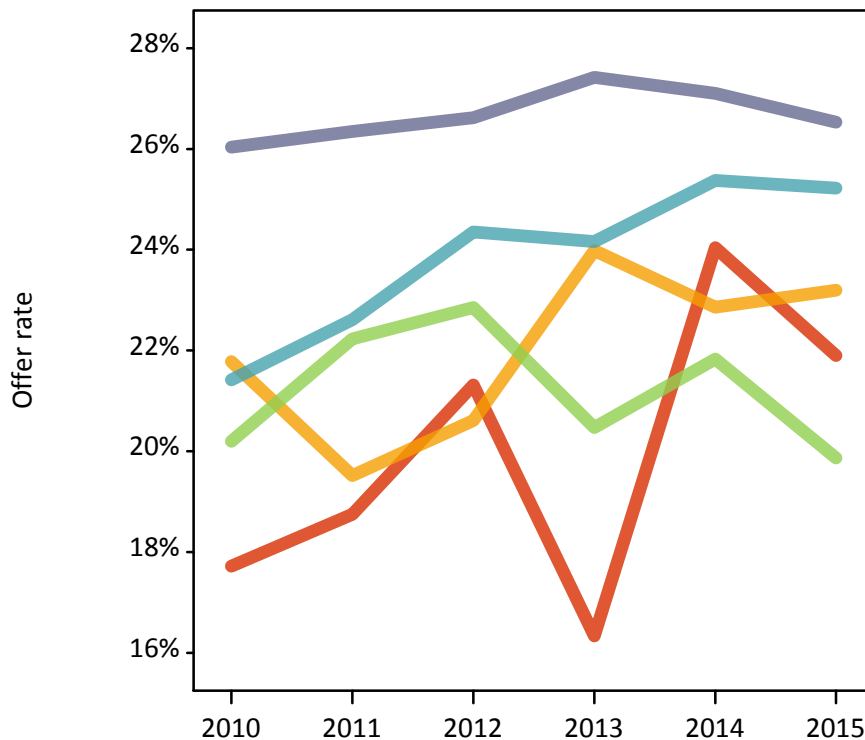
P.8 18 year old applications by POLAR3 quintile

Statistic	POLAR3 quintile	2010	2011	2012	2013	2014	2015
June deadline applications	Quintile 1	410	415	380	350	415	410
	Quintile 2	810	825	855	765	820	845
	Quintile 3	1,425	1,365	1,410	1,395	1,410	1,330
	Quintile 4	2,380	2,345	2,400	2,240	2,260	2,385
	Quintile 5	5,220	5,035	5,040	4,945	4,770	5,005
Offers	Quintile 1	75	80	80	55	100	90
	Quintile 2	175	160	175	185	185	195
	Quintile 3	290	305	320	285	310	265
	Quintile 4	510	530	585	540	575	600
	Quintile 5	1,360	1,325	1,340	1,355	1,295	1,330
Offer rate	Quintile 1	17.7%	18.8%	21.3%	16.3%	24.0%	21.9%
	Quintile 2	21.8%	19.5%	20.6%	24.0%	22.9%	23.2%
	Quintile 3	20.2%	22.2%	22.9%	20.5%	21.8%	19.9%
	Quintile 4	21.4%	22.6%	24.4%	24.2%	25.4%	25.2%
	Quintile 5	26.0%	26.3%	26.6%	27.4%	27.1%	26.5%
Average offer rate	Quintile 1	20.8%	21.0%	22.5%	20.6%	21.9%	19.8%
	Quintile 2	21.1%	21.5%	21.9%	21.7%	22.9%	22.0%
	Quintile 3	21.8%	22.4%	23.7%	22.8%	23.5%	22.7%
	Quintile 4	22.7%	23.4%	24.6%	24.5%	25.5%	24.6%
	Quintile 5	24.9%	25.4%	26.0%	26.7%	26.7%	26.5%
Percentage point difference between offer rate and average offer rate	Quintile 1	-3.1	-2.3	-1.2	-4.2	2.1	2.1
	Quintile 2	0.7	-1.9	-1.3	2.3	-0.0	1.2
	Quintile 3	-1.6	-0.2	-0.8	-2.4	-1.7	-2.8
	Quintile 4	-1.2	-0.8	-0.2	-0.3	-0.1	0.6
	Quintile 5	1.1	0.9	0.6	0.8	0.4	0.1
Contribution of group to the average offer rate	Quintile 1	0.081	0.092	0.074	0.080	0.097	0.093
	Quintile 2	0.126	0.129	0.125	0.129	0.121	0.129
	Quintile 3	0.177	0.172	0.178	0.185	0.185	0.174
	Quintile 4	0.264	0.266	0.272	0.261	0.268	0.271
	Quintile 5	0.540	0.532	0.532	0.540	0.524	0.533

P.9 18 year old offer rate by POLAR3 quintile

Note: The line for a group is not plotted when that group made fewer than 10 applications in any of the years from 2010-2015.

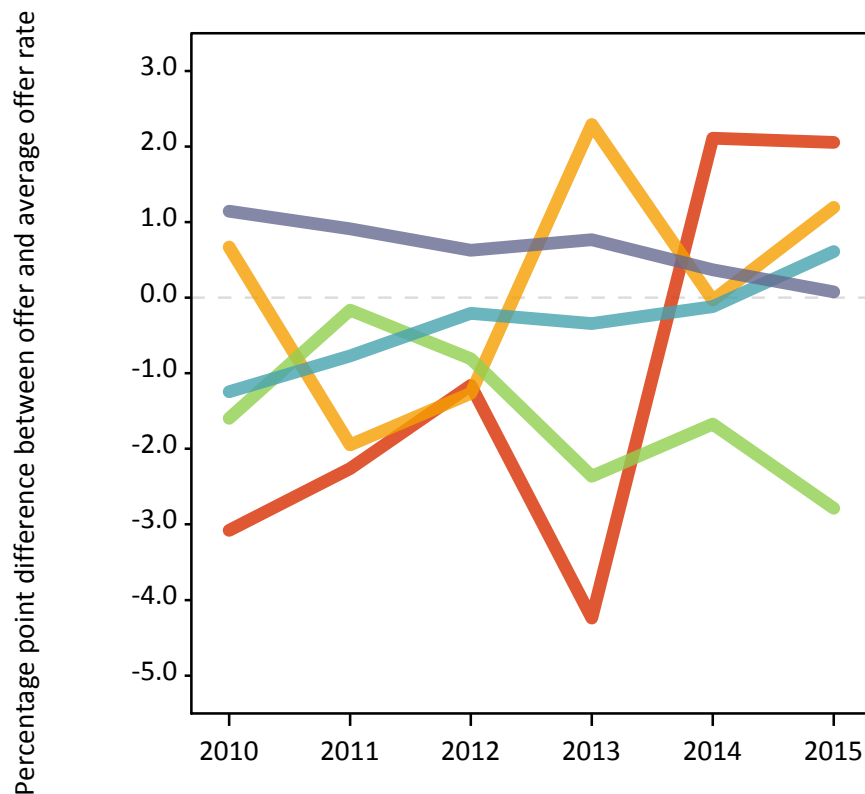
- Quintile 1
- Quintile 2
- Quintile 3
- Quintile 4
- Quintile 5



P.10 Percentage point difference between 18 year old offer rate and average offer rate by POLAR3 quintile

Note: The line for a group is not plotted when that group made fewer than 50 applications in any of the years from 2010-2015.

- Quintile 1
- Quintile 2
- Quintile 3
- Quintile 4
- Quintile 5



P.11 18 year old applicants by ethnic group

Statistic	Ethnic group	2010	2011	2012	2013	2014	2015
June deadline applicants	Asian	995	945	925	1,010	985	1,120
	Black	165	175	175	170	205	245
	Mixed	460	480	510	530	520	545
	White	8,395	8,150	8,295	7,800	7,755	7,840
	Other	95	95	75	95	115	100
Placed June deadline applicants	Asian	135	120	120	145	130	130
	Black	15	25	20	25	20	35
	Mixed	100	110	105	120	125	110
	White	1,940	1,920	2,045	1,895	1,880	1,865
	Other	15	15	5	10	20	10
All placed applicants	Asian	135	120	120	145	130	130
	Black	15	25	20	25	20	35
	Mixed	100	110	105	120	125	110
	White	1,945	1,920	2,050	1,895	1,885	1,875
	Other	15	15	5	10	20	10
June deadline applicants per 10,000 population	Asian	161.1	149.9	143.1	153.3	145.4	158.3
	Black	63.4	64.7	62.1	57.6	68.3	76.4
	Mixed	199.4	199.0	196.6	196.4	181.4	177.1
	White	125.2	125.9	128.5	124.0	125.7	125.8
	Other	124.7	119.8	87.0	105.9	121.4	101.8
Placed June deadline applicants per 10,000 population	Asian	21.7	18.9	18.8	22.1	19.2	18.4
	Black	6.5	9.5	6.7	8.1	6.9	11.0
	Mixed	42.3	46.2	39.5	45.1	42.8	36.0
	White	28.9	29.6	31.7	30.1	30.5	29.9
	Other	18.2	17.3	5.7	12.1	20.4	12.5
All placed applicants per 10,000 population	Asian	22.0	18.9	18.8	22.1	19.2	18.5
	Black	6.5	9.5	6.7	8.1	6.9	11.0
	Mixed	42.3	46.2	39.5	45.1	43.1	36.0
	White	29.0	29.7	31.7	30.1	30.6	30.1
	Other	18.2	17.3	5.7	12.1	20.4	12.5

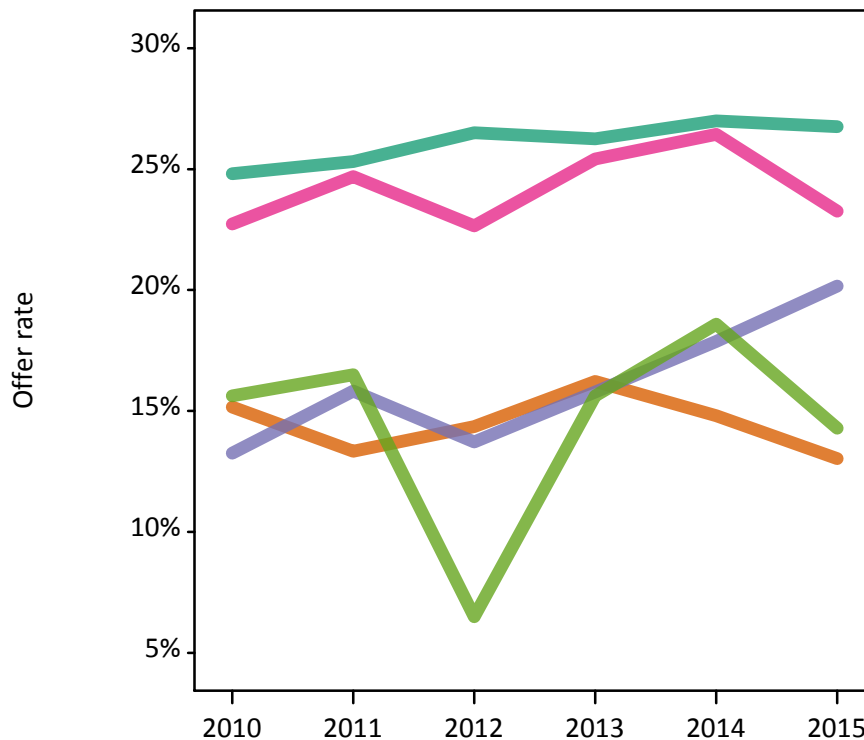
P.12 18 year old applications by ethnic group

Statistic	Ethnic group	2010	2011	2012	2013	2014	2015
June deadline applications	Asian	995	945	925	1,010	985	1,120
	Black	165	175	175	170	205	245
	Mixed	460	480	510	530	520	545
	White	8,395	8,150	8,295	7,800	7,755	7,840
	Other	95	95	75	95	115	100
Offers	Asian	150	125	135	165	145	145
	Black	20	30	25	25	35	50
	Mixed	105	120	115	135	140	125
	White	2,085	2,065	2,200	2,050	2,095	2,095
	Other	15	15	5	15	20	15
Offer rate	Asian	15.2%	13.3%	14.3%	16.2%	14.8%	13.0%
	Black	13.3%	15.8%	13.7%	15.8%	17.9%	20.2%
	Mixed	22.7%	24.7%	22.7%	25.4%	26.4%	23.3%
	White	24.8%	25.3%	26.5%	26.3%	27.0%	26.8%
	Other	15.6%	16.5%	6.5%	15.6%	18.6%	14.3%
Average offer rate	Asian	20.3%	20.7%	21.4%	21.7%	21.7%	20.8%
	Black	15.2%	16.5%	16.4%	17.7%	18.1%	18.5%
	Mixed	23.8%	24.4%	22.4%	24.3%	25.6%	22.7%
	White	24.0%	24.5%	25.6%	25.7%	26.1%	25.6%
	Other	21.5%	19.7%	20.0%	18.9%	20.2%	22.8%
Percentage point difference between offer rate and average offer rate	Asian	-5.2	-7.4	-7.0	-5.4	-6.9	-7.7
	Black	-1.9	-0.7	-2.7	-1.9	-0.3	1.6
	Mixed	-1.0	0.3	0.2	1.2	0.9	0.5
	White	0.8	0.8	0.9	0.6	0.9	1.1
	Other	-5.8	-3.2	-13.5	-3.3	-1.6	-8.5
Contribution of group to the average offer rate	Asian	0.187	0.176	0.170	0.180	0.187	0.197
	Black	0.079	0.066	0.070	0.073	0.110	0.087
	Mixed	0.090	0.091	0.101	0.104	0.093	0.106
	White	0.835	0.830	0.838	0.822	0.821	0.804
	Other	0.065	0.028	0.063	0.071	0.080	0.056

P.13 18 year old offer rate by ethnic group

Note: The line for a group is not plotted when that group made fewer than 10 applications in any of the years from 2010-2015.

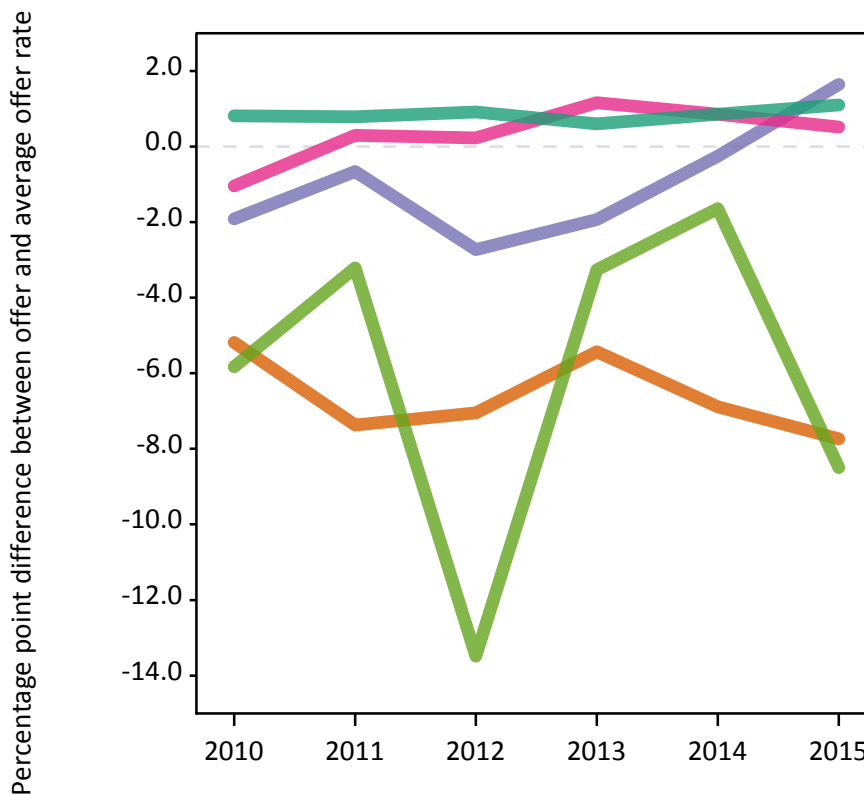
- Asian
- Black
- Mixed
- White
- Other



P.14 Percentage point difference between 18 year old offer rate and average offer rate by ethnic group

Note: The line for a group is not plotted when that group made fewer than 50 applications in any of the years from 2010-2015.

- Asian
- Black
- Mixed
- White
- Other



P.15 Applicants (all ages)

Statistic	2010	2011	2012	2013	2014	2015
June deadline applicants	12,500	12,305	11,980	11,695	11,565	11,975
Placed June deadline applicants	2,680	2,675	2,705	2,655	2,590	2,605
All placed applicants	2,685	2,680	2,705	2,655	2,600	2,620

P.16 Applications (all ages)

Statistic	2010	2011	2012	2013	2014	2015
June deadline applications	12,500	12,305	11,980	11,695	11,565	11,975
Offers	2,870	2,875	2,915	2,885	2,885	2,910
Offer rate	23.0%	23.4%	24.3%	24.7%	25.0%	24.3%

P.17 Applicants (all ages) by sex

Statistic	Sex	2010	2011	2012	2013	2014	2015
June deadline applicants	Men	6,510	6,350	6,080	5,955	5,950	6,095
	Women	5,990	5,955	5,905	5,740	5,615	5,880
Placed June deadline applicants	Men	1,490	1,405	1,445	1,365	1,385	1,365
	Women	1,190	1,270	1,260	1,290	1,205	1,245
All placed applicants	Men	1,495	1,405	1,445	1,365	1,390	1,370
	Women	1,195	1,270	1,260	1,290	1,210	1,250

P.18 Applications (all ages) by sex

Statistic	Sex	2010	2011	2012	2013	2014	2015
June deadline applications	Men	6,510	6,350	6,080	5,955	5,950	6,095
	Women	5,990	5,955	5,905	5,740	5,615	5,880
Offers	Men	1,590	1,490	1,550	1,470	1,515	1,490
	Women	1,280	1,385	1,365	1,415	1,370	1,415
Offer rate	Men	24.4%	23.5%	25.5%	24.7%	25.5%	24.5%
	Women	21.4%	23.2%	23.2%	24.6%	24.4%	24.1%

P.19 Applicants (all ages) by POLAR3 quintile

Statistic	POLAR3 quintile	2010	2011	2012	2013	2014	2015
June deadline applicants	Quintile 1	485	525	470	430	495	505
	Quintile 2	960	1,000	1,000	945	995	1,030
	Quintile 3	1,720	1,725	1,665	1,680	1,705	1,585
	Quintile 4	2,925	2,855	2,830	2,675	2,665	2,835
	Quintile 5	6,355	6,160	5,970	5,940	5,675	5,975
Placed June deadline applicants	Quintile 1	70	85	85	55	85	85
	Quintile 2	185	175	180	200	180	200
	Quintile 3	315	320	340	320	320	290
	Quintile 4	565	575	610	590	615	595
	Quintile 5	1,535	1,510	1,480	1,485	1,390	1,435
All placed applicants	Quintile 1	70	85	85	55	85	85
	Quintile 2	185	175	180	200	180	200
	Quintile 3	315	320	340	320	320	290
	Quintile 4	570	575	610	590	615	595
	Quintile 5	1,540	1,510	1,480	1,485	1,395	1,440

P.20 Applications (all ages) by POLAR3 quintile

Statistic	POLAR3 quintile	2010	2011	2012	2013	2014	2015
June deadline applications	Quintile 1	485	525	470	430	495	505
	Quintile 2	960	1,000	1,000	945	995	1,030
	Quintile 3	1,720	1,725	1,665	1,680	1,705	1,585
	Quintile 4	2,925	2,855	2,830	2,675	2,665	2,835
	Quintile 5	6,355	6,160	5,970	5,940	5,675	5,975
Offers	Quintile 1	80	90	95	65	110	105
	Quintile 2	205	195	200	215	210	220
	Quintile 3	335	355	375	345	370	325
	Quintile 4	615	625	655	640	675	680
	Quintile 5	1,630	1,605	1,580	1,610	1,520	1,570
Offer rate	Quintile 1	16.3%	17.1%	20.4%	15.0%	21.9%	20.7%
	Quintile 2	21.1%	19.5%	19.9%	22.7%	21.2%	21.6%
	Quintile 3	19.6%	20.7%	22.4%	20.6%	21.7%	20.4%
	Quintile 4	21.0%	21.8%	23.2%	24.0%	25.4%	24.0%
	Quintile 5	25.6%	26.1%	26.5%	27.1%	26.7%	26.3%

P.21 Applicants (all ages) by ethnic group

Statistic	Ethnic group	2010	2011	2012	2013	2014	2015
June deadline applicants	Asian	1,240	1,200	1,170	1,255	1,210	1,400
	Black	250	255	230	235	285	325
	Mixed	585	620	610	630	645	700
	White	10,090	9,865	9,695	9,290	9,115	9,195
	Other	120	135	105	130	150	140
Placed June deadline applicants	Asian	160	145	150	180	155	160
	Black	20	30	20	30	25	40
	Mixed	125	140	125	145	145	155
	White	2,310	2,275	2,355	2,245	2,205	2,180
	Other	15	15	5	15	20	15
All placed applicants	Asian	165	145	150	180	155	165
	Black	20	30	20	30	25	40
	Mixed	125	140	125	145	145	155
	White	2,315	2,275	2,360	2,245	2,210	2,190
	Other	15	15	5	15	20	15

P.22 Applications (all ages) by ethnic group

Statistic	Ethnic group	2010	2011	2012	2013	2014	2015
June deadline applications	Asian	1,240	1,200	1,170	1,255	1,210	1,400
	Black	250	255	230	235	285	325
	Mixed	585	620	610	630	645	700
	White	10,090	9,865	9,695	9,290	9,115	9,195
	Other	120	135	105	130	150	140
Offers	Asian	180	155	160	195	170	180
	Black	25	35	30	35	45	50
	Mixed	135	150	140	155	165	170
	White	2,465	2,445	2,530	2,425	2,440	2,430
	Other	15	20	10	20	25	15
Offer rate	Asian	14.4%	13.0%	13.8%	15.7%	14.2%	12.8%
	Black	10.1%	14.2%	12.7%	14.1%	15.7%	16.0%
	Mixed	22.9%	24.0%	22.9%	25.0%	25.3%	24.3%
	White	24.4%	24.8%	26.1%	26.1%	26.8%	26.4%
	Other	14.3%	15.0%	7.6%	14.7%	15.4%	11.6%

Technical Notes and Definitions

UCAS undergraduate scheme

Adjustment

Adjustment allows applicants who have met and exceeded the terms of their conditional firm offer to seek and find a place at another provider whilst keeping their place at their original firm choice provider.

Clearing

Clearing is a route for applicants that are not placed and holding no offers to find a place on courses with vacancies.

Cycle year

The UCAS application cycle which runs from September to October the following year. For example the 2015 cycle runs from September 2014 through to October 2015.

End of cycle

The point in the cycle to which the numbers in this report refer, and the point at which the cycle is closed such that no more applications or offers can be made, and no more applicants can be placed. Numbers reported at the end of cycle exclude information on a small number of applicants who cancelled during the cycle.

Extra

Applicants who are unsuccessful in obtaining an offer or decline all offers may be eligible to apply through Extra, where they can apply to one further course at a time. Extra operates from 25 February until early July. It provides applicants who are eligible the possibility of obtaining an offer before exam results are published and Clearing starts.

June 30 deadline

The deadline for main scheme applications. Applicants who apply after this date will go directly into Clearing.

Record of Prior Acceptance (RPA)

RPA is an acceptance route used when a provider informs UCAS of applicants it has accepted outside of the normal application process (e.g. individuals who have applied directly to the provider).

Reporting groups

Ethnic group

High level grouping of ethnic origin as declared by the applicant: 'White', 'Black', 'Asian', 'Mixed', 'Other', 'Unknown'. Applicants who declare themselves as 'Unknown' ethnic origin are not reported in these tables, but are included in the associated csv data file.

POLAR3 quintile

Developed by HEFCE, POLAR3 classifies small areas across the UK into five groups according to their level of young participation in Higher Education. Each of these groups represents around 20 per cent of young people and is ranked from Quintile 1 (areas with the lowest young participation rates, considered as the most disadvantaged) to Quintile 5 (highest young participation rates, considered most advantaged). POLAR3 is based on the participation rates of young people between 2005 and 2009 who entered Higher Education between 2005-06 and 2010-11, therefore is most suitable for applicants aged 19 and under. These groups are assigned using the postcode declared by the applicant at the time of their application. If a UK postcode is invalid, considered unsafe for measurement or there is no link to Census geography possible then the applicant is not assigned to a quintile. Applicants with no POLAR3 quintile are not reported.

Sex

Sex as declared by the applicant.

SIMD quintile

Scottish index of multiple deprivation (SIMD) for 2012 identifies small area concentrations of multiple deprivation across all of Scotland, providing a relative measure of deprivation amongst 6505 small areas (data zones) based on 7 socio-economic domains. These small areas are classified into five groups ranked from Quintile 1 (considered the most deprived) to Quintile 5 (considered least deprived), with equal populations in each quintile. Quintiles are assigned using the postcode declared by the applicant, applicants declaring invalid postcodes are classified as 'Not assigned' and are not reported.

SIMD is only defined for applicants domiciled in Scotland, therefore any applicants domiciled outside of Scotland cannot be assigned to an SIMD quintile and so are not reported for this measure.

SIMD is only reported for providers in Scotland. Application and entry rates by SIMD are reported in the 2015 End of Cycle Report and the 2016 cycle January deadline application rate report.

Statistics reported in the tables

All placed applicants

The number of applicants placed for entry into higher education at the provider through one of their choices, including any choices made through Extra, or via Adjustment, Clearing or RPA.

All placed applicants per 10,000 population

The number of total UK domiciled 18 year old placed applicants for entry into higher education at the provider divided by the number of UK 18 year olds in the population, multiplied by 10,000. This gives the number of 18 year olds, for every 10,000 in the population, that were placed at the provider through one of their choices, including any choices made through Extra, or via Adjustment, Clearing or RPA. It is an alternative way of expressing the entry rate to a provider. By referencing the underlying population this statistic shows how the number of placed applicants is changing in relation to the available pool of potential applicants and so gives the chance that somebody from the group will be placed at a provider.

This statistic is only reported for 18 year olds.

Average offer rate

The offer rate that you might expect if the predicted grades and subject choice of applicants were the only factors that influenced whether an applicant was made an offer by the provider. The average offer rate is calculated by dividing applicants according to their specific combination of grades (for A levels the best three predicted grades are used, for BTECs, International Baccalaureate and Scottish Highers and Advanced Highers, predicted grades along with any grades already achieved upon applying are used) and subject choice. For each combination the number of main scheme offers is divided by the number of main scheme applications, to give an overall offer rate. This is then multiplied by the number of applications made by the group for which the average offer rate is being calculated (for example POLAR3 quintile 1), to give an average number of offers for that group. These average number of offers are then added together across all combinations of predicted grade and subject and divided by the number of main scheme applications from the group to give the average offer rate.

The average offer rate does not attempt to control for any other factors that may play a part in the decision to make an offer, such as the subject of the qualifications studied, their relevance to a course, or the grade in each subject; higher numbers of A levels being studied; the exact profile of grades predicted; personal statements; teacher references; interviews; or any other criteria (such as work experience or portfolios) that may be part of the admissions decision.

This statistic is only reported for 18 year olds.

Contribution of group to the average offer rate

The way in which the average offer rate is defined means that the pattern of application and offers of a group (for example POLAR3 quintile 1) will always contribute, in part, to the average offer rate for that group. When this contribution is large, the average offer rate will mainly reflect the patterns for the group, meaning that the value of the average offer rate will be similar to the offer rate, the percentage point difference statistic will be small, and any real difference between the offer rate and what might be expected given the predicted grades and subject choices of the applicants will be difficult to detect.

Values of the contribution of group to the average offer rate range between 0 and 1. The closer the value is to 1 the greater the contribution a group makes to its own average offer rate.

This statistic is only reported for 18 year olds.

Placed June deadline applicants

An applicant who has been placed for entry into higher education at the provider through a June deadline application.

Placed June deadline applicants per 10,000 population

The number of UK domiciled 18 year old placed June deadline applicants at the provider divided by the number of UK 18 year olds in the population, multiplied by 10,000. This gives the number of 18 year olds, for every 10,000 in the population, that were placed at the provider through one of their June deadline applications. It is an alternative way of expressing the entry rate to a provider, but for placed June deadline applicants only. By referencing the underlying population this statistic shows how the number of placed June deadline applicants is changing in relation to the available pool of potential 18 year old applicants and so gives the chance that somebody from the group will be placed at a provider through a June deadline application.

This statistic is only reported for 18 year olds.

June deadline applications

An application (or choice) to a course in higher education to the provider that is made by the June 30 deadline. Each applicant can make up to five choices this way. The number of June deadline applications does not include choices made through the following routes: Clearing, Extra, Adjustment and RPAs. Applications made to October deadline courses received after the October deadline are not included in these statistics.

June deadline applicants

The number of applicants that made at least one application to the provider by the June 30 deadline.

June deadline applicants per 10,000 population

The number of UK domiciled 18 year old June deadline applicants to the provider divided by the number of UK 18 year olds in the population, multiplied by 10,000. This gives the number of 18 year olds, for every 10,000 in the population, who applied by the June 30 deadline. It is equivalent to the application rate. By referencing the underlying population this statistic shows how the number of June deadline applicants is changing in relation to the available pool of potential 18 year old applicants and so gives the chance that somebody from the group will apply to a provider by the June 30 deadline.

This statistic is only reported for 18 year olds.

Offers

An offer is defined as a provider's decision in response to an application to offer a place to an applicant, often subject to the applicant satisfying academic and/or other criteria, via a June deadline application (i.e. does not cover choices made through the following routes: Clearing, Extra, Adjustment and RPAs).

Offer rate

The number of offers made divided by the number of June deadline applications. This gives the proportion of all June deadline applications to the provider that received an offer.

Percentage point difference between offer rate and average offer rate

The offer rate minus the average offer rate.

The percentage point difference can be compared to the expected range of statistical variation resulting from the calculation of the average offer rate using the Average Offer Rate Lookup Table. Where the value of the percentage point difference lies outside of this range, the percentage point difference may be considered to represent a real difference between the offer rate and the average offer rate.

Other definitions

Age

This analysis uses country-specific age definitions that align with the cut off points for school and college cohorts within the different administrations of the UK. For England and Wales, ages are defined on the 31 August, for Northern Ireland on the 1 July and for Scotland on the 28 February the following year. Defining ages in this way matches the assignment of children to school cohorts. For applicants outside of the UK a cohort cut off of 31 August has been used.

Provider

A higher education provider - a university or college.

UK domiciled

Declared area of permanent residence within England, Northern Ireland, Scotland and Wales. Applicants from the Channel Islands and Isle of Man are not included.