

N84 The University of Nottingham

Cycle years: 2010 - 2015

Cycle Reference Point: End of Cycle

Applicant coverage: UK domiciled

Reporting groups: Sex, POLAR3, ethnic group

Applicant statistics: June deadline applicants, placed June deadline applicants, all placed applicants, June deadline applicants per 10,000 population, placed June deadline applicants per 10,000 population, all placed applicants per 10,000 population

Application statistics: June deadline applications, offers, offer rate, average offer rate, percentage point difference between offer rate and average offer rate, contribution of group to the average offer rate

Non-disclosure controls: To avoid the disclosure of information about any individual the following measures are taken

- Applicants, placed applicants, applications and offers are rounded to the nearest 5.
- Applicants/placed applicants per 10,000 population figures are reported as 0 if the applicant/placed applicant figures are rounded to 0.
- All statistics related to the offer rate are not reported when the number of applications for a group is less than 10. The percentage point difference between the offer rate and the average offer rate is not reported when the number of applications for a group is less than 50.
- Offer rates are reported as 0% if there are fewer than 5 offers, and 100% if the number of offers is within 5 of the number of applications. When the offer rate is reported as 0% or 100%, it is reported in italics.

Contents:

18 year old applicants:	P.1
18 year old applications:	P.2
18 year old applicants by sex:	P.3
18 year old applications by sex:	P.4
18 year old applicants by POLAR3 quintile:	P.7
18 year old applications by POLAR3 quintile:	P.8
18 year old applicants by ethnic group:	P.11
18 year old applications by ethnic group:	P.12
Applicants (all ages):	P.15
Applications (all ages):	P.16
Applicants (all ages) by sex:	P.17
Applications (all ages) by sex:	P.18
Applicants (all ages) by POLAR3 quintile:	P.19
Applications (all ages) by POLAR3 quintile:	P.20
Applicants (all ages) by ethnic group:	P.21
Applications (all ages) by ethnic group:	P.22

P.1 18 year old applicants

Statistic	2010	2011	2012	2013	2014	2015
June deadline applicants	25,645	26,825	28,645	27,580	25,100	25,900
Placed June deadline applicants	3,665	3,980	3,970	3,935	3,740	4,010
All placed applicants	3,780	4,050	4,220	4,195	3,905	4,485
June deadline applicants per 10,000 population	324.8	348.3	370.3	362.4	333.3	338.1
Placed June deadline applicants per 10,000	46.4	51.7	51.3	51.7	49.6	52.3
All placed applicants per 10,000 population	47.9	52.6	54.6	55.2	51.9	58.5

P.2 18 year old applications

Statistic	2010	2011	2012	2013	2014	2015
June deadline applications	26,720	27,980	29,680	28,490	25,885	26,665
Offers	19,255	19,020	20,650	20,965	20,045	20,940
Offer rate	72.1%	68.0%	69.6%	73.6%	77.4%	78.5%

P.3 18 year old applicants by sex

Statistic	Sex	2010	2011	2012	2013	2014	2015
June deadline applicants	Men	11,865	12,630	13,500	12,685	10,995	11,630
	Women	13,780	14,190	15,145	14,895	14,110	14,270
Placed June deadline applicants	Men	1,665	1,920	1,910	1,830	1,685	1,890
	Women	2,000	2,065	2,060	2,105	2,050	2,120
All placed applicants	Men	1,710	1,950	2,010	1,940	1,775	2,110
	Women	2,070	2,100	2,210	2,260	2,130	2,375
June deadline applicants per 10,000 population	Men	295.4	321.0	340.4	325.0	284.0	296.3
	Women	355.3	376.8	401.8	401.9	385.4	381.9
Placed June deadline applicants per 10,000 population	Men	41.5	48.7	48.1	46.9	43.6	48.1
	Women	51.5	54.8	54.7	56.8	56.1	56.7
All placed applicants per 10,000 population	Men	42.6	49.6	50.7	49.6	45.9	53.8
	Women	53.3	55.7	58.6	61.0	58.2	63.5

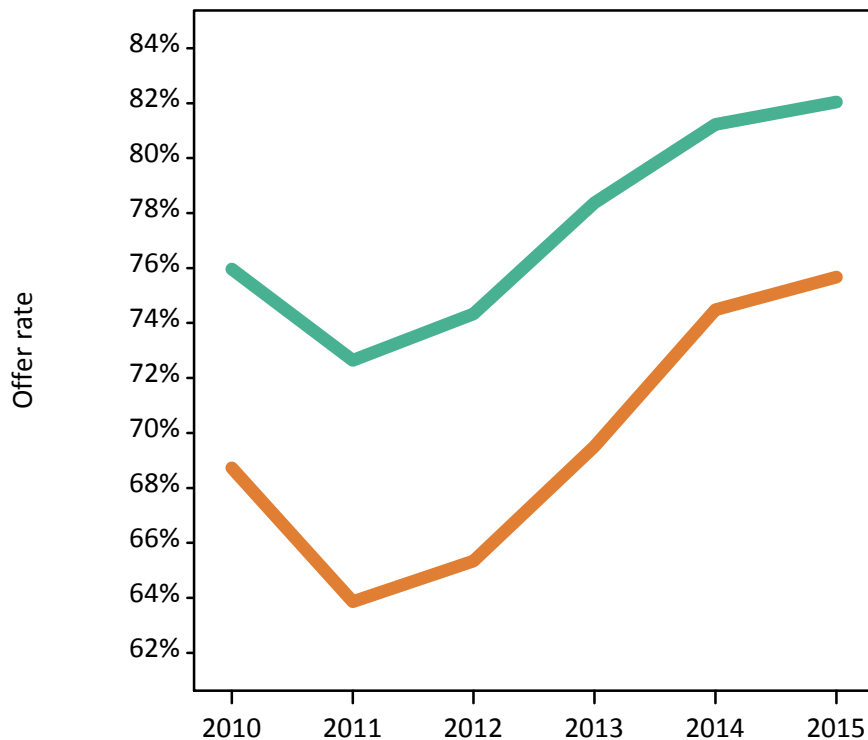
P.4 18 year old applications by sex

Statistic	Sex	2010	2011	2012	2013	2014	2015
June deadline applications	Men	12,310	13,115	13,960	13,105	11,325	11,970
	Women	14,415	14,870	15,720	15,380	14,560	14,695
Offers	Men	9,350	9,525	10,380	10,270	9,200	9,820
	Women	9,905	9,495	10,270	10,690	10,845	11,120
Offer rate	Men	76.0%	72.6%	74.3%	78.4%	81.2%	82.0%
	Women	68.7%	63.9%	65.3%	69.5%	74.5%	75.7%
Average offer rate	Men	76.5%	73.2%	74.6%	78.7%	81.6%	82.5%
	Women	68.3%	63.4%	65.1%	69.3%	74.2%	75.3%
Percentage point difference between offer rate and average offer rate	Men	-0.5	-0.5	-0.3	-0.3	-0.3	-0.5
	Women	0.4	0.5	0.3	0.2	0.3	0.4
Contribution of group to the average offer rate	Men	0.584	0.601	0.604	0.594	0.584	0.597
	Women	0.645	0.648	0.648	0.654	0.676	0.671

P.5 18 year old offer rate by sex

Note: The line for a group is not plotted when that group made fewer than 10 applications in any of the years from 2010-2015.

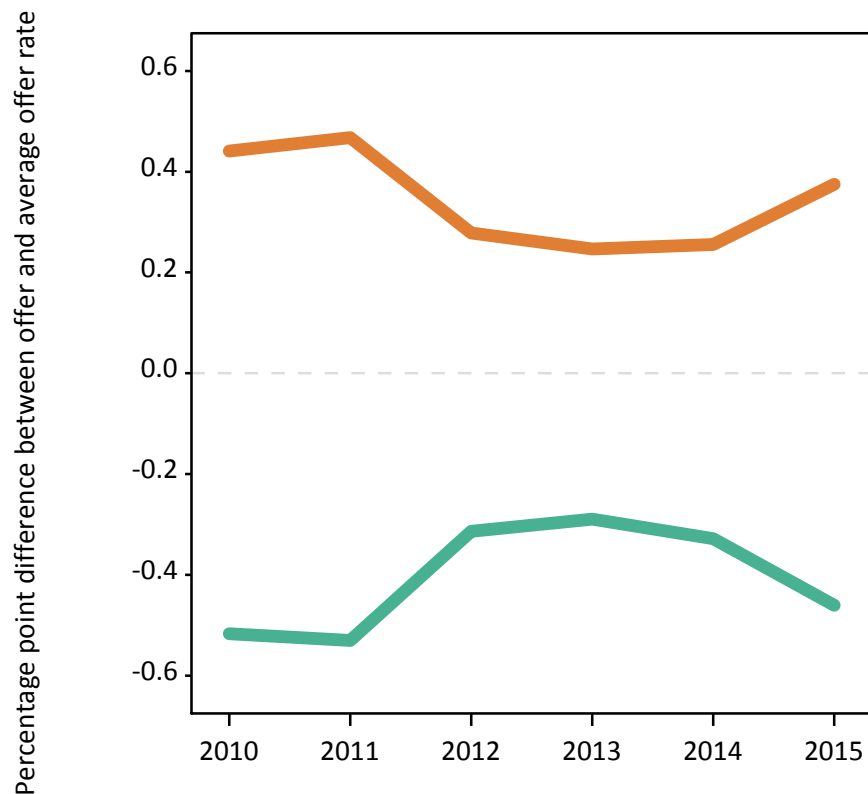
Men
Women



P.6 Percentage point difference between 18 year old offer rate and average offer rate by sex

Note: The line for a group is not plotted when that group made fewer than 50 applications in any of the years from 2010-2015.

Men
Women



P.7 18 year old applicants by POLAR3 quintile

Statistic	POLAR3 quintile	2010	2011	2012	2013	2014	2015
June deadline applicants	Quintile 1	1,630	1,765	1,735	1,695	1,790	1,820
	Quintile 2	2,765	2,800	3,160	3,045	2,895	3,070
	Quintile 3	3,940	4,150	4,530	4,340	4,125	4,220
	Quintile 4	5,990	6,235	6,690	6,400	5,635	5,870
	Quintile 5	11,275	11,825	12,485	12,065	10,615	10,865
Placed June deadline applicants	Quintile 1	220	245	195	220	225	230
	Quintile 2	350	365	405	440	430	450
	Quintile 3	530	560	615	595	605	595
	Quintile 4	850	935	920	890	840	910
	Quintile 5	1,710	1,870	1,830	1,785	1,640	1,815
All placed applicants	Quintile 1	225	250	205	235	235	250
	Quintile 2	355	370	435	460	440	480
	Quintile 3	545	570	650	630	630	660
	Quintile 4	875	950	975	940	880	1,015
	Quintile 5	1,775	1,905	1,950	1,930	1,715	2,055
June deadline applicants per 10,000 population	Quintile 1	110.2	122.9	121.8	121.6	128.7	129.8
	Quintile 2	179.7	186.2	210.8	206.7	198.0	206.7
	Quintile 3	247.7	269.6	293.2	284.5	274.0	274.7
	Quintile 4	376.2	398.1	421.7	409.3	365.7	375.0
	Quintile 5	665.2	714.4	743.3	729.6	650.8	649.0
Placed June deadline applicants per 10,000 population	Quintile 1	14.7	17.0	13.7	15.7	16.2	16.3
	Quintile 2	22.9	24.2	27.1	29.9	29.3	30.2
	Quintile 3	33.2	36.5	40.0	39.1	40.2	38.6
	Quintile 4	53.2	59.8	58.0	56.8	54.4	58.1
	Quintile 5	100.9	113.0	109.0	107.9	100.4	108.4
All placed applicants per 10,000 population	Quintile 1	15.1	17.4	14.5	16.8	16.9	17.9
	Quintile 2	23.2	24.7	29.1	31.2	30.0	32.4
	Quintile 3	34.1	37.0	42.1	41.2	42.0	43.0
	Quintile 4	55.1	60.6	61.4	60.2	57.2	65.0
	Quintile 5	104.6	115.0	116.1	116.7	105.2	122.9

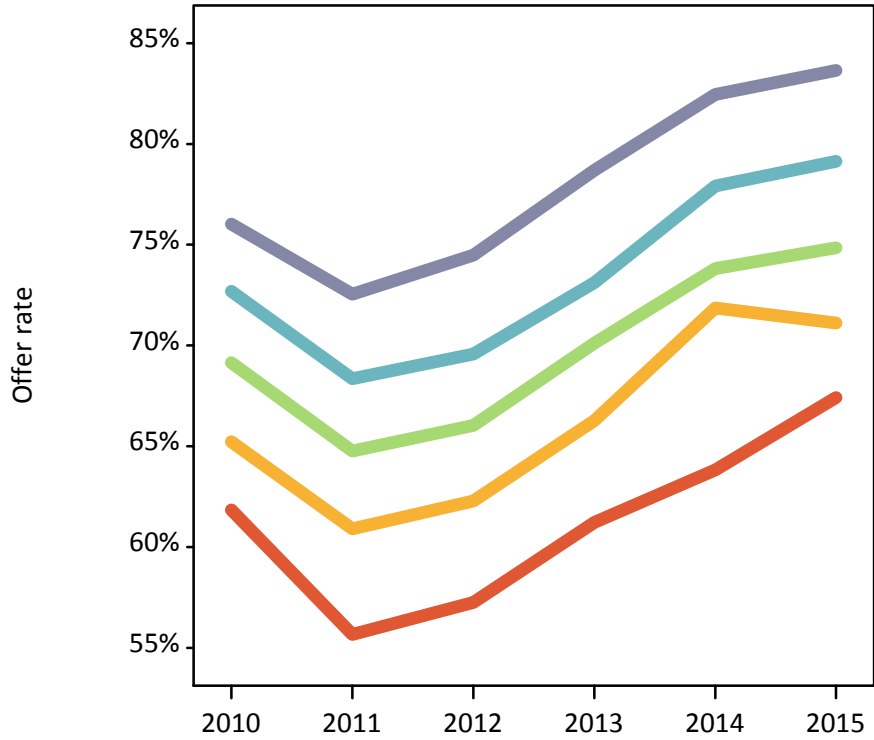
P.8 18 year old applications by POLAR3 quintile

Statistic	POLAR3 quintile	2010	2011	2012	2013	2014	2015
June deadline applications	Quintile 1	1,755	1,910	1,805	1,775	1,875	1,900
	Quintile 2	2,920	2,970	3,305	3,150	2,990	3,185
	Quintile 3	4,140	4,325	4,695	4,480	4,250	4,345
	Quintile 4	6,195	6,475	6,940	6,630	5,795	5,995
	Quintile 5	11,665	12,255	12,895	12,415	10,930	11,175
Offers	Quintile 1	1,085	1,065	1,035	1,085	1,200	1,280
	Quintile 2	1,905	1,810	2,060	2,085	2,150	2,265
	Quintile 3	2,860	2,800	3,100	3,140	3,135	3,255
	Quintile 4	4,505	4,425	4,825	4,850	4,515	4,745
	Quintile 5	8,870	8,890	9,605	9,770	9,015	9,345
Offer rate	Quintile 1	61.8%	55.7%	57.3%	61.2%	63.8%	67.4%
	Quintile 2	65.2%	60.9%	62.3%	66.3%	71.9%	71.1%
	Quintile 3	69.1%	64.8%	66.0%	70.1%	73.8%	74.9%
	Quintile 4	72.7%	68.3%	69.6%	73.1%	77.9%	79.1%
	Quintile 5	76.0%	72.5%	74.5%	78.7%	82.5%	83.6%
Average offer rate	Quintile 1	61.1%	57.7%	60.0%	62.6%	66.1%	69.1%
	Quintile 2	66.2%	62.4%	62.7%	66.9%	72.4%	72.6%
	Quintile 3	69.7%	65.9%	66.3%	70.9%	74.6%	75.5%
	Quintile 4	72.7%	68.5%	70.1%	73.3%	77.2%	79.0%
	Quintile 5	75.7%	71.4%	73.6%	77.9%	82.0%	82.8%
Percentage point difference between offer rate and average offer rate	Quintile 1	0.8	-2.1	-2.7	-1.4	-2.3	-1.7
	Quintile 2	-1.0	-1.5	-0.5	-0.6	-0.5	-1.5
	Quintile 3	-0.6	-1.1	-0.2	-0.7	-0.8	-0.6
	Quintile 4	0.0	-0.1	-0.5	-0.2	0.8	0.2
	Quintile 5	0.3	1.2	0.8	0.7	0.4	0.9
Contribution of group to the average offer rate	Quintile 1	0.144	0.146	0.129	0.131	0.155	0.143
	Quintile 2	0.166	0.165	0.164	0.165	0.171	0.176
	Quintile 3	0.201	0.199	0.202	0.197	0.213	0.210
	Quintile 4	0.270	0.266	0.267	0.268	0.260	0.259
	Quintile 5	0.485	0.486	0.480	0.482	0.476	0.472

P.9 18 year old offer rate by POLAR3 quintile

Note: The line for a group is not plotted when that group made fewer than 10 applications in any of the years from 2010-2015.

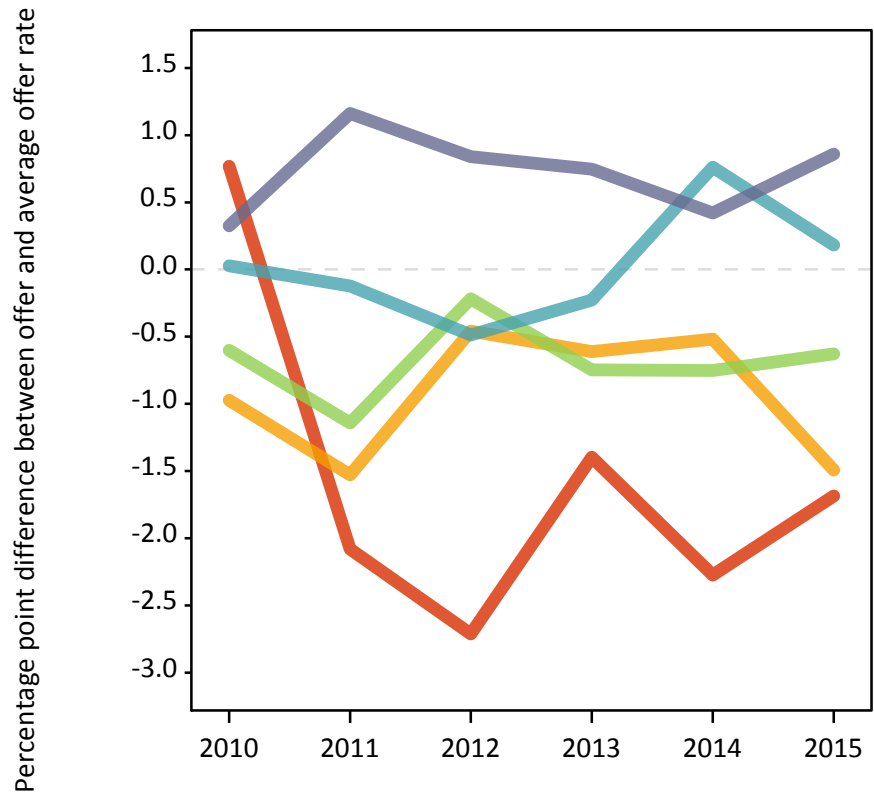
- Quintile 1
- Quintile 2
- Quintile 3
- Quintile 4
- Quintile 5



P.10 Percentage point difference between 18 year old offer rate and average offer rate by POLAR3 quintile

Note: The line for a group is not plotted when that group made fewer than 50 applications in any of the years from 2010-2015.

- Quintile 1
- Quintile 2
- Quintile 3
- Quintile 4
- Quintile 5



P.11 18 year old applicants by ethnic group

Statistic	Ethnic group	2010	2011	2012	2013	2014	2015
June deadline applicants	Asian	2,690	2,780	3,105	3,105	2,795	3,130
	Black	730	835	1,020	1,105	1,190	1,260
	Mixed	895	1,045	1,155	1,160	1,025	1,195
	White	20,955	21,785	22,930	21,835	19,720	19,885
	Other	175	205	235	240	255	270
Placed June deadline applicants	Asian	320	350	370	380	335	410
	Black	90	100	115	140	160	150
	Mixed	120	150	170	160	165	185
	White	3,090	3,330	3,270	3,200	3,035	3,220
	Other	20	30	25	30	30	25
All placed applicants	Asian	350	360	405	420	365	505
	Black	95	105	140	170	175	180
	Mixed	120	150	185	175	175	200
	White	3,165	3,375	3,435	3,380	3,145	3,545
	Other	25	30	30	30	35	35
June deadline applicants per 10,000 population	Asian	435.4	440.8	479.8	470.9	411.9	442.6
	Black	278.5	305.8	362.6	371.9	392.6	396.0
	Mixed	385.9	432.3	443.4	428.7	356.3	387.6
	White	312.5	336.5	355.1	347.0	319.7	319.1
	Other	229.9	251.9	266.7	264.7	271.8	279.3
Placed June deadline applicants per 10,000 population	Asian	51.6	55.2	56.8	57.8	49.4	58.1
	Black	34.4	36.2	40.1	47.8	52.5	47.1
	Mixed	50.9	61.9	65.3	59.5	56.7	59.4
	White	46.1	51.4	50.6	50.9	49.2	51.7
	Other	28.6	35.8	27.1	32.0	33.3	27.0
All placed applicants per 10,000 population	Asian	56.3	56.8	62.2	64.0	54.0	71.4
	Black	36.3	39.1	49.4	57.3	57.1	56.9
	Mixed	52.7	62.8	70.6	64.0	60.5	64.2
	White	47.2	52.1	53.2	53.7	50.9	56.9
	Other	31.2	35.8	33.9	32.0	37.6	34.3

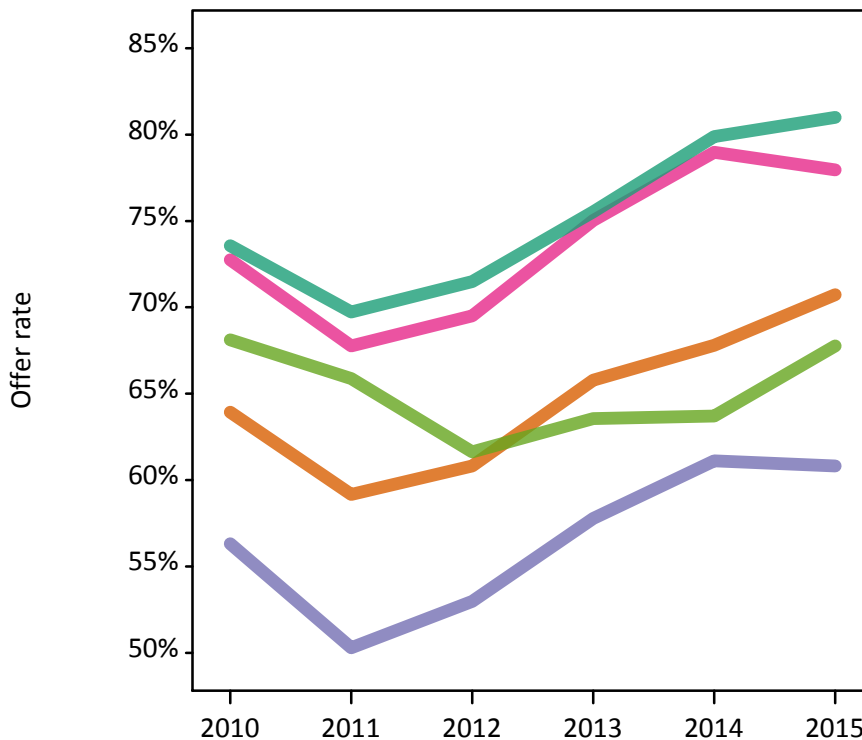
P.12 18 year old applications by ethnic group

Statistic	Ethnic group	2010	2011	2012	2013	2014	2015
June deadline applications	Asian	2,755	2,865	3,170	3,175	2,870	3,190
	Black	745	855	1,045	1,125	1,215	1,275
	Mixed	915	1,090	1,175	1,195	1,045	1,225
	White	21,920	22,785	23,845	22,605	20,375	20,535
	Other	185	210	245	245	260	275
Offers	Asian	1,760	1,695	1,930	2,090	1,945	2,255
	Black	420	430	555	650	740	775
	Mixed	665	740	820	895	825	955
	White	16,125	15,890	17,045	17,070	16,275	16,630
	Other	125	140	150	155	165	185
Offer rate	Asian	63.9%	59.2%	60.8%	65.8%	67.8%	70.7%
	Black	56.3%	50.3%	53.0%	57.8%	61.1%	60.8%
	Mixed	72.8%	67.8%	69.5%	75.0%	79.0%	78.0%
	White	73.6%	69.7%	71.5%	75.5%	79.9%	81.0%
	Other	68.1%	65.9%	61.6%	63.6%	63.7%	67.8%
Average offer rate	Asian	64.2%	60.3%	61.1%	65.9%	68.8%	71.0%
	Black	59.3%	54.0%	55.8%	59.0%	62.8%	63.7%
	Mixed	73.3%	67.8%	68.5%	74.6%	78.1%	78.8%
	White	73.4%	69.4%	71.4%	75.4%	79.6%	80.7%
	Other	70.8%	67.2%	63.6%	66.0%	67.3%	68.4%
Percentage point difference between offer rate and average offer rate	Asian	-0.3	-1.1	-0.3	-0.1	-1.0	-0.2
	Black	-3.0	-3.7	-2.8	-1.2	-1.7	-2.8
	Mixed	-0.6	-0.0	1.0	0.4	0.9	-0.9
	White	0.2	0.3	0.1	0.1	0.2	0.3
	Other	-2.7	-1.4	-2.0	-2.4	-3.6	-0.6
Contribution of group to the average offer rate	Asian	0.246	0.223	0.212	0.214	0.217	0.224
	Black	0.115	0.112	0.122	0.132	0.155	0.140
	Mixed	0.087	0.091	0.088	0.089	0.088	0.089
	White	0.848	0.839	0.829	0.822	0.819	0.802
	Other	0.059	0.054	0.059	0.063	0.076	0.071

P.13 18 year old offer rate by ethnic group

Note: The line for a group is not plotted when that group made fewer than 10 applications in any of the years from 2010-2015.

- Asian
- Black
- Mixed
- White
- Other



P.14 Percentage point difference between 18 year old offer rate and average offer rate by ethnic group

Note: The line for a group is not plotted when that group made fewer than 50 applications in any of the years from 2010-2015.

- Asian
- Black
- Mixed
- White
- Other



P.15 Applicants (all ages)

Statistic	2010	2011	2012	2013	2014	2015
June deadline applicants	37,730	40,175	40,575	39,850	37,855	38,870
Placed June deadline applicants	5,555	5,835	5,425	5,330	5,385	5,725
All placed applicants	5,745	5,975	5,810	5,805	5,705	6,480

P.16 Applications (all ages)

Statistic	2010	2011	2012	2013	2014	2015
June deadline applications	40,210	43,000	42,775	41,670	39,590	40,295
Offers	24,535	24,390	25,410	26,005	25,765	26,695
Offer rate	61.0%	56.7%	59.4%	62.4%	65.1%	66.3%

P.17 Applicants (all ages) by sex

Statistic	Sex	2010	2011	2012	2013	2014	2015
June deadline applicants	Men	17,000	18,180	18,285	17,740	16,060	16,990
	Women	20,725	21,995	22,290	22,110	21,800	21,885
Placed June deadline applicants	Men	2,435	2,735	2,530	2,440	2,360	2,595
	Women	3,120	3,100	2,895	2,895	3,025	3,130
All placed applicants	Men	2,520	2,795	2,675	2,615	2,500	2,935
	Women	3,225	3,180	3,135	3,190	3,205	3,545

P.18 Applications (all ages) by sex

Statistic	Sex	2010	2011	2012	2013	2014	2015
June deadline applications	Men	17,825	19,100	19,045	18,385	16,690	17,550
	Women	22,390	23,900	23,735	23,285	22,900	22,745
Offers	Men	11,950	12,255	12,785	12,830	11,940	12,600
	Women	12,585	12,130	12,625	13,175	13,825	14,095
Offer rate	Men	67.1%	64.2%	67.1%	69.8%	71.5%	71.8%
	Women	56.2%	50.8%	53.2%	56.6%	60.4%	62.0%

P.19 Applicants (all ages) by POLAR3 quintile

Statistic	POLAR3 quintile	2010	2011	2012	2013	2014	2015
June deadline applicants	Quintile 1	3,310	3,620	3,445	3,365	3,690	3,720
	Quintile 2	4,710	4,920	5,055	5,075	5,115	5,300
	Quintile 3	6,070	6,495	6,600	6,560	6,420	6,565
	Quintile 4	8,405	8,945	9,180	8,985	8,260	8,455
	Quintile 5	15,130	16,080	16,220	15,795	14,300	14,730
Placed June deadline applicants	Quintile 1	475	485	385	405	445	475
	Quintile 2	695	620	615	655	710	710
	Quintile 3	835	850	835	840	865	880
	Quintile 4	1,190	1,315	1,215	1,190	1,180	1,245
	Quintile 5	2,345	2,550	2,370	2,240	2,170	2,395
All placed applicants	Quintile 1	485	500	420	450	480	535
	Quintile 2	715	640	665	700	745	785
	Quintile 3	865	875	885	910	915	995
	Quintile 4	1,230	1,340	1,305	1,285	1,250	1,405
	Quintile 5	2,435	2,610	2,530	2,455	2,305	2,735

P.20 Applications (all ages) by POLAR3 quintile

Statistic	POLAR3 quintile	2010	2011	2012	2013	2014	2015
June deadline applications	Quintile 1	3,775	4,205	3,815	3,670	4,010	3,935
	Quintile 2	5,195	5,460	5,440	5,375	5,395	5,560
	Quintile 3	6,565	6,940	6,960	6,880	6,725	6,805
	Quintile 4	8,780	9,480	9,610	9,370	8,570	8,675
	Quintile 5	15,785	16,805	16,865	16,305	14,810	15,210
Offers	Quintile 1	1,610	1,575	1,490	1,555	1,785	1,865
	Quintile 2	2,655	2,490	2,625	2,765	2,925	3,025
	Quintile 3	3,715	3,625	3,825	3,975	4,100	4,195
	Quintile 4	5,555	5,585	5,885	5,980	5,775	5,970
	Quintile 5	10,950	11,060	11,540	11,685	11,135	11,575
Offer rate	Quintile 1	42.7%	37.5%	39.0%	42.4%	44.5%	47.4%
	Quintile 2	51.0%	45.6%	48.3%	51.4%	54.2%	54.4%
	Quintile 3	56.6%	52.2%	55.0%	57.8%	61.0%	61.6%
	Quintile 4	63.2%	58.9%	61.2%	63.8%	67.4%	68.8%
	Quintile 5	69.3%	65.8%	68.4%	71.7%	75.2%	76.1%

P.21 Applicants (all ages) by ethnic group

Statistic	Ethnic group	2010	2011	2012	2013	2014	2015
June deadline applicants	Asian	4,230	4,505	4,820	4,855	4,470	5,035
	Black	1,920	2,250	2,455	2,500	2,695	2,995
	Mixed	1,350	1,590	1,640	1,700	1,610	1,815
	White	29,555	31,140	30,900	30,110	28,340	28,210
	Other	320	350	425	435	435	495
Placed June deadline applicants	Asian	490	565	550	515	500	600
	Black	160	180	205	245	265	295
	Mixed	185	230	230	220	235	265
	White	4,625	4,755	4,350	4,275	4,300	4,480
	Other	40	50	35	45	45	45
All placed applicants	Asian	540	585	605	590	560	735
	Black	170	200	255	290	300	365
	Mixed	195	235	250	245	255	290
	White	4,740	4,845	4,605	4,595	4,505	4,950
	Other	40	50	50	50	50	60

P.22 Applications (all ages) by ethnic group

Statistic	Ethnic group	2010	2011	2012	2013	2014	2015
June deadline applications	Asian	4,360	4,715	4,970	4,980	4,610	5,150
	Black	2,055	2,420	2,615	2,600	2,825	3,105
	Mixed	1,410	1,690	1,700	1,760	1,665	1,875
	White	31,675	33,465	32,705	31,610	29,705	29,320
	Other	335	365	450	450	450	510
Offers	Asian	2,400	2,355	2,645	2,780	2,705	3,085
	Black	655	695	855	955	1,115	1,210
	Mixed	885	980	1,030	1,145	1,090	1,250
	White	20,180	19,975	20,445	20,745	20,435	20,665
	Other	175	185	235	230	235	285
Offer rate	Asian	55.0%	50.0%	53.2%	55.8%	58.6%	59.9%
	Black	32.0%	28.7%	32.8%	36.7%	39.4%	39.0%
	Mixed	62.8%	58.1%	60.4%	65.2%	65.4%	66.5%
	White	63.7%	59.7%	62.5%	65.6%	68.8%	70.5%
	Other	53.2%	50.8%	52.2%	51.3%	52.7%	56.2%

Technical Notes and Definitions

UCAS undergraduate scheme

Adjustment

Adjustment allows applicants who have met and exceeded the terms of their conditional firm offer to seek and find a place at another provider whilst keeping their place at their original firm choice provider.

Clearing

Clearing is a route for applicants that are not placed and holding no offers to find a place on courses with vacancies.

Cycle year

The UCAS application cycle which runs from September to October the following year. For example the 2015 cycle runs from September 2014 through to October 2015.

End of cycle

The point in the cycle to which the numbers in this report refer, and the point at which the cycle is closed such that no more applications or offers can be made, and no more applicants can be placed. Numbers reported at the end of cycle exclude information on a small number of applicants who cancelled during the cycle.

Extra

Applicants who are unsuccessful in obtaining an offer or decline all offers may be eligible to apply through Extra, where they can apply to one further course at a time. Extra operates from 25 February until early July. It provides applicants who are eligible the possibility of obtaining an offer before exam results are published and Clearing starts.

June 30 deadline

The deadline for main scheme applications. Applicants who apply after this date will go directly into Clearing.

Record of Prior Acceptance (RPA)

RPA is an acceptance route used when a provider informs UCAS of applicants it has accepted outside of the normal application process (e.g. individuals who have applied directly to the provider).

Reporting groups

Ethnic group

High level grouping of ethnic origin as declared by the applicant: 'White', 'Black', 'Asian', 'Mixed', 'Other', 'Unknown'. Applicants who declare themselves as 'Unknown' ethnic origin are not reported in these tables, but are included in the associated csv data file.

POLAR3 quintile

Developed by HEFCE, POLAR3 classifies small areas across the UK into five groups according to their level of young participation in Higher Education. Each of these groups represents around 20 per cent of young people and is ranked from Quintile 1 (areas with the lowest young participation rates, considered as the most disadvantaged) to Quintile 5 (highest young participation rates, considered most advantaged). POLAR3 is based on the participation rates of young people between 2005 and 2009 who entered Higher Education between 2005-06 and 2010-11, therefore is most suitable for applicants aged 19 and under. These groups are assigned using the postcode declared by the applicant at the time of their application. If a UK postcode is invalid, considered unsafe for measurement or there is no link to Census geography possible then the applicant is not assigned to a quintile. Applicants with no POLAR3 quintile are not reported.

Sex

Sex as declared by the applicant.

SIMD quintile

Scottish index of multiple deprivation (SIMD) for 2012 identifies small area concentrations of multiple deprivation across all of Scotland, providing a relative measure of deprivation amongst 6505 small areas (data zones) based on 7 socio-economic domains. These small areas are classified into five groups ranked from Quintile 1 (considered the most deprived) to Quintile 5 (considered least deprived), with equal populations in each quintile. Quintiles are assigned using the postcode declared by the applicant, applicants declaring invalid postcodes are classified as 'Not assigned' and are not reported.

SIMD is only defined for applicants domiciled in Scotland, therefore any applicants domiciled outside of Scotland cannot be assigned to an SIMD quintile and so are not reported for this measure.

SIMD is only reported for providers in Scotland. Application and entry rates by SIMD are reported in the 2015 End of Cycle Report and the 2016 cycle January deadline application rate report.

Statistics reported in the tables

All placed applicants

The number of applicants placed for entry into higher education at the provider through one of their choices, including any choices made through Extra, or via Adjustment, Clearing or RPA.

All placed applicants per 10,000 population

The number of total UK domiciled 18 year old placed applicants for entry into higher education at the provider divided by the number of UK 18 year olds in the population, multiplied by 10,000. This gives the number of 18 year olds, for every 10,000 in the population, that were placed at the provider through one of their choices, including any choices made through Extra, or via Adjustment, Clearing or RPA. It is an alternative way of expressing the entry rate to a provider. By referencing the underlying population this statistic shows how the number of placed applicants is changing in relation to the available pool of potential applicants and so gives the chance that somebody from the group will be placed at a provider.

This statistic is only reported for 18 year olds.

Average offer rate

The offer rate that you might expect if the predicted grades and subject choice of applicants were the only factors that influenced whether an applicant was made an offer by the provider. The average offer rate is calculated by dividing applicants according to their specific combination of grades (for A levels the best three predicted grades are used, for BTECs, International Baccalaureate and Scottish Highers and Advanced Highers, predicted grades along with any grades already achieved upon applying are used) and subject choice. For each combination the number of main scheme offers is divided by the number of main scheme applications, to give an overall offer rate. This is then multiplied by the number of applications made by the group for which the average offer rate is being calculated (for example POLAR3 quintile 1), to give an average number of offers for that group. These average number of offers are then added together across all combinations of predicted grade and subject and divided by the number of main scheme applications from the group to give the average offer rate.

The average offer rate does not attempt to control for any other factors that may play a part in the decision to make an offer, such as the subject of the qualifications studied, their relevance to a course, or the grade in each subject; higher numbers of A levels being studied; the exact profile of grades predicted; personal statements; teacher references; interviews; or any other criteria (such as work experience or portfolios) that may be part of the admissions decision.

This statistic is only reported for 18 year olds.

Contribution of group to the average offer rate

The way in which the average offer rate is defined means that the pattern of application and offers of a group (for example POLAR3 quintile 1) will always contribute, in part, to the average offer rate for that group. When this contribution is large, the average offer rate will mainly reflect the patterns for the group, meaning that the value of the average offer rate will be similar to the offer rate, the percentage point difference statistic will be small, and any real difference between the offer rate and what might be expected given the predicted grades and subject choices of the applicants will be difficult to detect.

Values of the contribution of group to the average offer rate range between 0 and 1. The closer the value is to 1 the greater the contribution a group makes to its own average offer rate.

This statistic is only reported for 18 year olds.

Placed June deadline applicants

An applicant who has been placed for entry into higher education at the provider through a June deadline application.

Placed June deadline applicants per 10,000 population

The number of UK domiciled 18 year old placed June deadline applicants at the provider divided by the number of UK 18 year olds in the population, multiplied by 10,000. This gives the number of 18 year olds, for every 10,000 in the population, that were placed at the provider through one of their June deadline applications. It is an alternative way of expressing the entry rate to a provider, but for placed June deadline applicants only. By referencing the underlying population this statistic shows how the number of placed June deadline applicants is changing in relation to the available pool of potential 18 year old applicants and so gives the chance that somebody from the group will be placed at a provider through a June deadline application.

This statistic is only reported for 18 year olds.

June deadline applications

An application (or choice) to a course in higher education to the provider that is made by the June 30 deadline. Each applicant can make up to five choices this way. The number of June deadline applications does not include choices made through the following routes: Clearing, Extra, Adjustment and RPAs. Applications made to October deadline courses received after the October deadline are not included in these statistics.

June deadline applicants

The number of applicants that made at least one application to the provider by the June 30 deadline.

June deadline applicants per 10,000 population

The number of UK domiciled 18 year old June deadline applicants to the provider divided by the number of UK 18 year olds in the population, multiplied by 10,000. This gives the number of 18 year olds, for every 10,000 in the population, who applied by the June 30 deadline. It is equivalent to the application rate. By referencing the underlying population this statistic shows how the number of June deadline applicants is changing in relation to the available pool of potential 18 year old applicants and so gives the chance that somebody from the group will apply to a provider by the June 30 deadline.

This statistic is only reported for 18 year olds.

Offers

An offer is defined as a provider's decision in response to an application to offer a place to an applicant, often subject to the applicant satisfying academic and/or other criteria, via a June deadline application (i.e. does not cover choices made through the following routes: Clearing, Extra, Adjustment and RPAs).

Offer rate

The number of offers made divided by the number of June deadline applications. This gives the proportion of all June deadline applications to the provider that received an offer.

Percentage point difference between offer rate and average offer rate

The offer rate minus the average offer rate.

The percentage point difference can be compared to the expected range of statistical variation resulting from the calculation of the average offer rate using the Average Offer Rate Lookup Table. Where the value of the percentage point difference lies outside of this range, the percentage point difference may be considered to represent a real difference between the offer rate and the average offer rate.

Other definitions

Age

This analysis uses country-specific age definitions that align with the cut off points for school and college cohorts within the different administrations of the UK. For England and Wales, ages are defined on the 31 August, for Northern Ireland on the 1 July and for Scotland on the 28 February the following year. Defining ages in this way matches the assignment of children to school cohorts. For applicants outside of the UK a cohort cut off of 31 August has been used.

Provider

A higher education provider - a university or college.

UK domiciled

Declared area of permanent residence within England, Northern Ireland, Scotland and Wales. Applicants from the Channel Islands and Isle of Man are not included.