

## N91 Nottingham Trent University

**Cycle years:** 2010 - 2015

**Cycle Reference Point:** End of Cycle

**Applicant coverage:** UK domiciled

**Reporting groups:** Sex, POLAR3, ethnic group

**Applicant statistics:** June deadline applicants, placed June deadline applicants, all placed applicants, June deadline applicants per 10,000 population, placed June deadline applicants per 10,000 population, all placed applicants per 10,000 population

**Application statistics:** June deadline applications, offers, offer rate, average offer rate, percentage point difference between offer rate and average offer rate, contribution of group to the average offer rate

**Non-disclosure controls:** To avoid the disclosure of information about any individual the following measures are taken

- Applicants, placed applicants, applications and offers are rounded to the nearest 5.
- Applicants/placed applicants per 10,000 population figures are reported as 0 if the applicant/placed applicant figures are rounded to 0.
- All statistics related to the offer rate are not reported when the number of applications for a group is less than 10. The percentage point difference between the offer rate and the average offer rate is not reported when the number of applications for a group is less than 50.
- Offer rates are reported as 0% if there are fewer than 5 offers, and 100% if the number of offers is within 5 of the number of applications. When the offer rate is reported as 0% or 100%, it is reported in italics.

### Contents:

18 year old applicants:	P.1
18 year old applications:	P.2
18 year old applicants by sex:	P.3
18 year old applications by sex:	P.4
18 year old applicants by POLAR3 quintile:	P.7
18 year old applications by POLAR3 quintile:	P.8
18 year old applicants by ethnic group:	P.11
18 year old applications by ethnic group:	P.12
Applicants (all ages):	P.15
Applications (all ages):	P.16
Applicants (all ages) by sex:	P.17
Applications (all ages) by sex:	P.18
Applicants (all ages) by POLAR3 quintile:	P.19
Applications (all ages) by POLAR3 quintile:	P.20
Applicants (all ages) by ethnic group:	P.21
Applications (all ages) by ethnic group:	P.22

## P.1 18 year old applicants

Statistic	2010	2011	2012	2013	2014	2015
June deadline applicants	20,080	21,760	19,115	18,410	19,010	20,700
Placed June deadline applicants	3,355	3,465	3,180	3,340	4,025	3,625
All placed applicants	3,600	3,655	3,585	3,650	4,470	4,075
June deadline applicants per 10,000 population	254.3	282.5	247.1	241.9	252.4	270.2
Placed June deadline applicants per 10,000	42.5	45.0	41.1	43.9	53.4	47.3
All placed applicants per 10,000 population	45.6	47.4	46.3	48.0	59.4	53.2

## P.2 18 year old applications

Statistic	2010	2011	2012	2013	2014	2015
June deadline applications	21,805	23,640	20,725	19,720	20,415	22,245
Offers	16,300	16,960	15,465	16,865	17,805	19,485
Offer rate	74.8%	71.7%	74.6%	85.5%	87.2%	87.6%

### P.3 18 year old applicants by sex

Statistic	Sex	2010	2011	2012	2013	2014	2015
June deadline applicants	Men	8,740	9,415	8,185	8,065	8,160	8,500
	Women	11,340	12,345	10,925	10,340	10,850	12,200
Placed June deadline applicants	Men	1,535	1,520	1,340	1,425	1,660	1,370
	Women	1,820	1,945	1,840	1,915	2,365	2,255
All placed applicants	Men	1,635	1,605	1,535	1,570	1,865	1,570
	Women	1,965	2,050	2,050	2,080	2,610	2,505
June deadline applicants per 10,000 population	Men	217.6	239.2	206.4	206.6	210.8	216.6
	Women	292.3	327.8	289.9	279.1	296.4	326.5
Placed June deadline applicants per 10,000 population	Men	38.3	38.6	33.7	36.5	42.8	35.0
	Women	46.9	51.6	48.8	51.6	64.6	60.3
All placed applicants per 10,000 population	Men	40.7	40.8	38.7	40.2	48.1	40.0
	Women	50.7	54.4	54.4	56.1	71.2	67.1

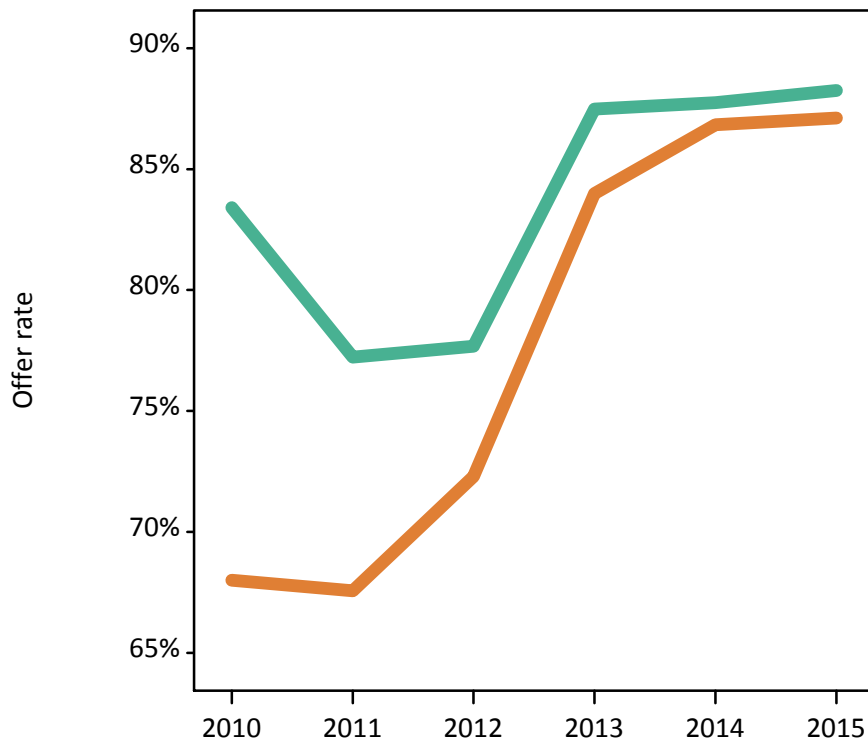
### P.4 18 year old applications by sex

Statistic	Sex	2010	2011	2012	2013	2014	2015
June deadline applications	Men	9,555	10,230	8,925	8,675	8,760	9,180
	Women	12,245	13,415	11,805	11,050	11,650	13,065
Offers	Men	7,970	7,900	6,930	7,585	7,690	8,100
	Women	8,330	9,060	8,535	9,280	10,120	11,385
Offer rate	Men	83.4%	77.2%	77.7%	87.5%	87.8%	88.3%
	Women	68.0%	67.6%	72.3%	84.0%	86.8%	87.1%
Average offer rate	Men	81.9%	76.2%	77.1%	86.9%	87.8%	88.8%
	Women	69.2%	68.4%	72.7%	84.4%	86.8%	86.7%
Percentage point difference between offer rate and average offer rate	Men	1.5	1.1	0.5	0.6	-0.0	-0.5
	Women	-1.2	-0.8	-0.4	-0.4	0.0	0.4
Contribution of group to the average offer rate	Men	0.599	0.584	0.587	0.601	0.600	0.587
	Women	0.687	0.683	0.688	0.687	0.699	0.710

### P.5 18 year old offer rate by sex

Note: The line for a group is not plotted when that group made fewer than 10 applications in any of the years from 2010-2015.

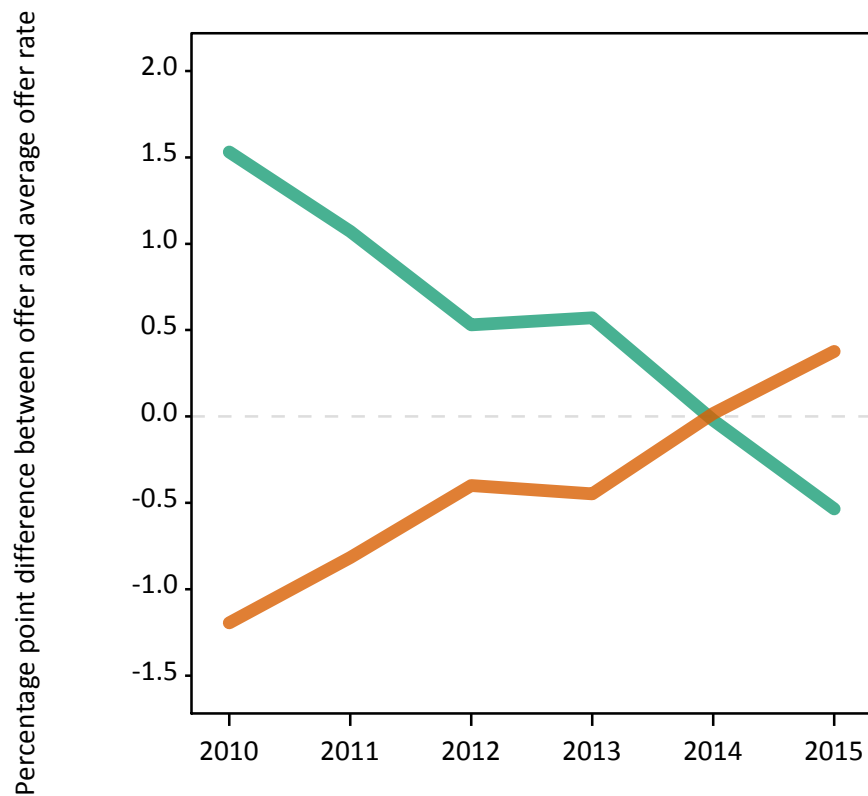
Men  
Women



### P.6 Percentage point difference between 18 year old offer rate and average offer rate by sex

Note: The line for a group is not plotted when that group made fewer than 50 applications in any of the years from 2010-2015.

Men  
Women



## P.7 18 year old applicants by POLAR3 quintile

Statistic	POLAR3 quintile	2010	2011	2012	2013	2014	2015
June deadline applicants	Quintile 1	2,275	2,470	2,180	2,180	2,335	2,580
	Quintile 2	3,280	3,520	3,225	3,070	3,320	3,590
	Quintile 3	3,805	3,990	3,560	3,610	3,670	4,040
	Quintile 4	4,625	5,065	4,320	4,240	4,205	4,690
	Quintile 5	6,050	6,685	5,795	5,290	5,445	5,750
Placed June deadline applicants	Quintile 1	390	395	365	445	455	470
	Quintile 2	590	555	500	605	705	630
	Quintile 3	615	605	600	655	800	690
	Quintile 4	735	835	690	750	910	780
	Quintile 5	1,020	1,075	1,015	880	1,150	1,050
All placed applicants	Quintile 1	420	415	415	470	510	520
	Quintile 2	635	580	580	650	775	705
	Quintile 3	660	630	670	720	870	775
	Quintile 4	780	880	775	820	1,015	880
	Quintile 5	1,105	1,145	1,135	990	1,295	1,185
June deadline applicants per 10,000 population	Quintile 1	153.6	171.8	153.0	156.3	167.7	184.3
	Quintile 2	213.4	234.1	215.2	208.4	226.8	241.6
	Quintile 3	239.2	259.4	230.5	236.8	243.8	263.0
	Quintile 4	290.4	323.4	272.2	271.0	272.9	299.6
	Quintile 5	357.1	403.7	344.9	320.0	333.9	343.4
Placed June deadline applicants per 10,000 population	Quintile 1	26.5	27.6	25.8	31.8	32.8	33.7
	Quintile 2	38.4	36.9	33.3	41.1	48.0	42.5
	Quintile 3	38.7	39.2	38.9	43.0	53.2	44.9
	Quintile 4	46.1	53.4	43.5	48.0	59.0	49.7
	Quintile 5	60.1	64.8	60.5	53.3	70.4	62.7
All placed applicants per 10,000 population	Quintile 1	28.3	28.9	29.2	33.7	36.7	37.2
	Quintile 2	41.2	38.7	38.7	44.0	52.9	47.5
	Quintile 3	41.4	40.9	43.4	47.1	57.9	50.5
	Quintile 4	48.9	56.1	49.0	52.3	65.7	56.2
	Quintile 5	65.1	69.2	67.6	60.0	79.4	70.7

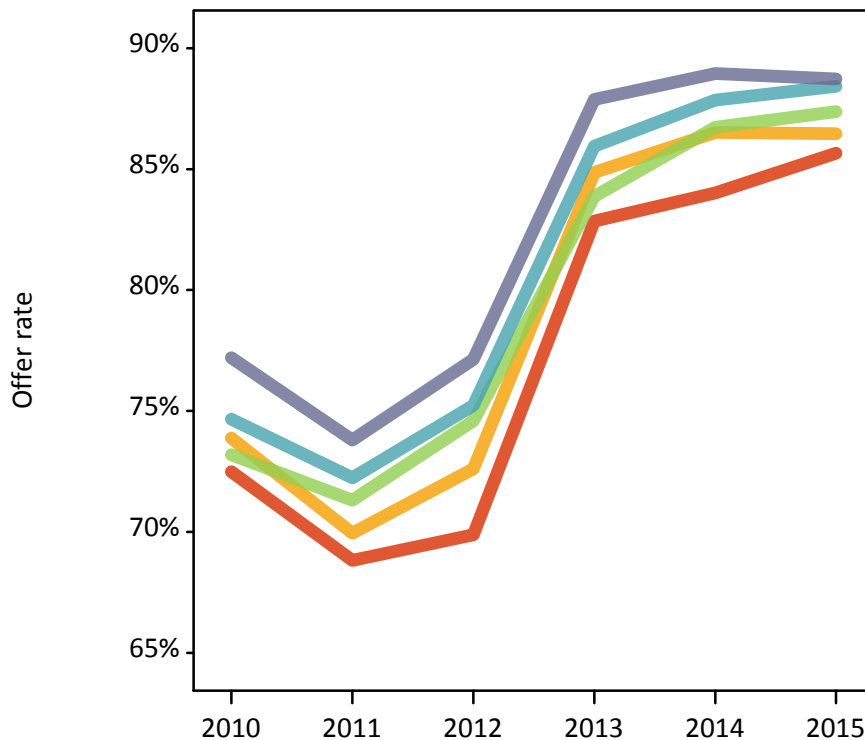
## P.8 18 year old applications by POLAR3 quintile

Statistic	POLAR3 quintile	2010	2011	2012	2013	2014	2015
June deadline applications	Quintile 1	2,510	2,810	2,445	2,385	2,570	2,850
	Quintile 2	3,670	3,865	3,545	3,385	3,565	3,950
	Quintile 3	4,110	4,330	3,835	3,850	3,910	4,305
	Quintile 4	4,955	5,460	4,645	4,470	4,520	4,975
	Quintile 5	6,510	7,145	6,230	5,615	5,805	6,105
Offers	Quintile 1	1,820	1,935	1,710	1,975	2,160	2,440
	Quintile 2	2,710	2,705	2,575	2,870	3,085	3,415
	Quintile 3	3,010	3,085	2,860	3,230	3,390	3,760
	Quintile 4	3,700	3,945	3,495	3,840	3,970	4,395
	Quintile 5	5,025	5,275	4,805	4,935	5,160	5,420
Offer rate	Quintile 1	72.5%	68.8%	69.9%	82.9%	84.0%	85.7%
	Quintile 2	73.9%	70.0%	72.6%	84.9%	86.5%	86.5%
	Quintile 3	73.2%	71.3%	74.6%	83.9%	86.7%	87.4%
	Quintile 4	74.7%	72.2%	75.2%	85.9%	87.9%	88.4%
	Quintile 5	77.2%	73.8%	77.1%	87.9%	89.0%	88.7%
Average offer rate	Quintile 1	72.3%	70.3%	71.3%	84.0%	85.4%	86.9%
	Quintile 2	73.4%	70.3%	74.3%	85.1%	86.5%	86.7%
	Quintile 3	74.0%	71.9%	74.8%	84.6%	87.2%	87.4%
	Quintile 4	75.1%	71.9%	74.6%	85.8%	87.9%	87.9%
	Quintile 5	76.7%	72.9%	75.9%	86.8%	88.0%	88.3%
Percentage point difference between offer rate and average offer rate	Quintile 1	0.2	-1.5	-1.4	-1.2	-1.3	-1.3
	Quintile 2	0.5	-0.4	-1.7	-0.3	0.0	-0.3
	Quintile 3	-0.8	-0.6	-0.2	-0.7	-0.4	-0.1
	Quintile 4	-0.4	0.3	0.6	0.1	-0.1	0.5
	Quintile 5	0.5	0.9	1.2	1.1	0.9	0.4
Contribution of group to the average offer rate	Quintile 1	0.173	0.177	0.188	0.184	0.182	0.185
	Quintile 2	0.212	0.208	0.222	0.224	0.224	0.225
	Quintile 3	0.227	0.216	0.227	0.241	0.233	0.231
	Quintile 4	0.265	0.264	0.266	0.270	0.261	0.263
	Quintile 5	0.346	0.349	0.356	0.340	0.342	0.329

### P.9 18 year old offer rate by POLAR3 quintile

Note: The line for a group is not plotted when that group made fewer than 10 applications in any of the years from 2010-2015.

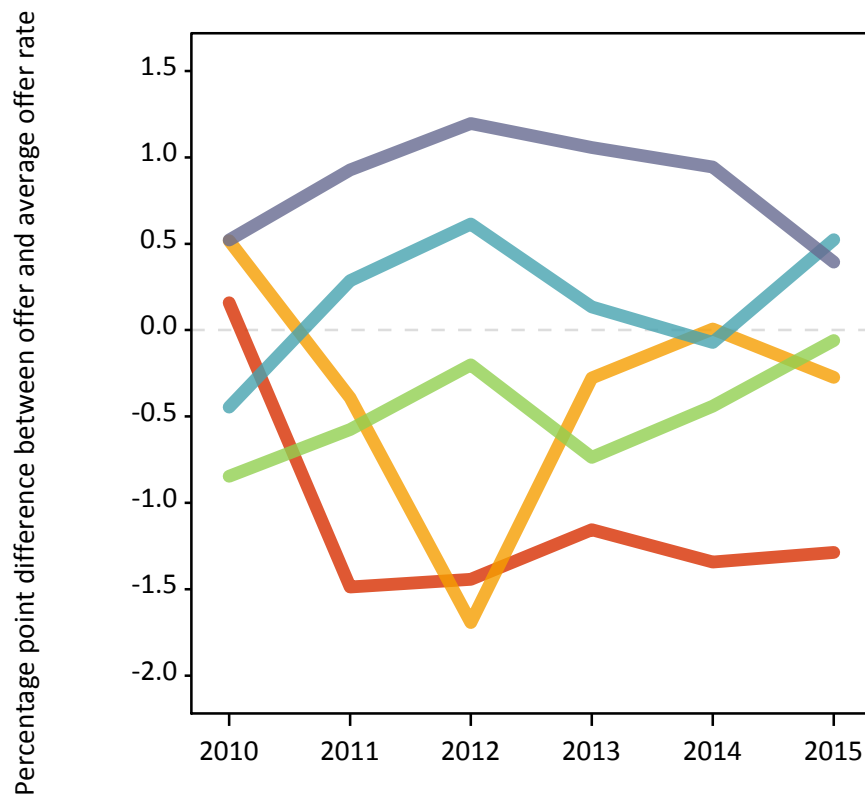
- Quintile 1
- Quintile 2
- Quintile 3
- Quintile 4
- Quintile 5



### P.10 Percentage point difference between 18 year old offer rate and average offer rate by POLAR3 quintile

Note: The line for a group is not plotted when that group made fewer than 50 applications in any of the years from 2010-2015.

- Quintile 1
- Quintile 2
- Quintile 3
- Quintile 4
- Quintile 5



## P.11 18 year old applicants by ethnic group

Statistic	Ethnic group	2010	2011	2012	2013	2014	2015
June deadline applicants	Asian	2,025	2,130	1,850	1,740	1,825	1,985
	Black	975	1,180	1,050	1,130	1,190	1,485
	Mixed	655	770	665	665	765	880
	White	16,240	17,475	15,365	14,725	15,040	16,125
	Other	125	130	125	115	135	165
Placed June deadline applicants	Asian	340	305	280	275	330	300
	Black	140	155	175	205	235	220
	Mixed	110	135	100	130	175	155
	White	2,730	2,845	2,600	2,695	3,250	2,920
	Other	20	10	20	20	25	20
All placed applicants	Asian	380	335	335	305	385	360
	Black	155	170	210	245	285	265
	Mixed	125	140	120	145	190	175
	White	2,900	2,980	2,885	2,920	3,575	3,240
	Other	20	15	25	25	25	25
June deadline applicants per 10,000 population	Asian	327.7	338.1	286.0	263.7	269.1	280.4
	Black	372.1	432.0	372.5	380.6	392.6	467.3
	Mixed	281.8	317.1	255.7	245.2	266.6	284.8
	White	242.1	269.9	238.0	234.0	243.8	258.8
	Other	159.8	159.3	142.4	126.8	142.9	173.4
Placed June deadline applicants per 10,000 population	Asian	55.3	48.6	43.1	42.0	49.0	42.7
	Black	53.5	57.1	61.8	69.7	77.5	69.8
	Mixed	47.9	55.7	37.6	48.5	60.1	49.6
	White	40.7	44.0	40.2	42.9	52.7	46.9
	Other	27.3	13.6	22.6	19.9	24.7	18.7
All placed applicants per 10,000 population	Asian	61.5	53.3	52.0	46.5	56.8	50.9
	Black	60.0	62.5	73.9	83.2	94.0	83.6
	Mixed	54.8	58.2	46.1	52.9	66.0	57.4
	White	43.2	46.0	44.7	46.4	58.0	52.0
	Other	28.6	17.3	26.0	25.4	25.8	23.9



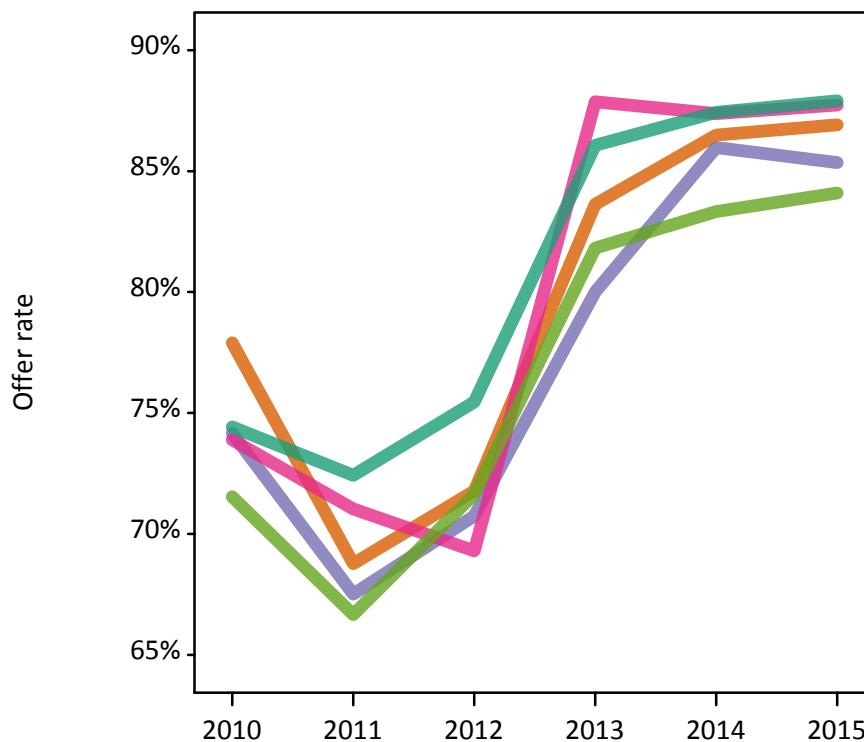
## P.12 18 year old applications by ethnic group

Statistic	Ethnic group	2010	2011	2012	2013	2014	2015
June deadline applications	Asian	2,250	2,310	2,020	1,890	1,960	2,125
	Black	1,005	1,235	1,090	1,160	1,235	1,530
	Mixed	720	820	725	710	825	930
	White	17,630	19,055	16,700	15,805	16,195	17,420
	Other	130	135	135	120	140	175
Offers	Asian	1,750	1,590	1,450	1,580	1,695	1,845
	Black	745	835	770	930	1,060	1,305
	Mixed	530	580	500	625	720	815
	White	13,120	13,800	12,605	13,605	14,160	15,315
	Other	95	90	95	100	115	150
Offer rate	Asian	77.9%	68.8%	71.8%	83.6%	86.5%	86.9%
	Black	74.2%	67.5%	70.7%	80.0%	86.0%	85.3%
	Mixed	73.9%	71.0%	69.3%	87.9%	87.4%	87.7%
	White	74.4%	72.4%	75.5%	86.1%	87.4%	87.9%
	Other	71.5%	66.7%	71.6%	81.8%	83.3%	84.1%
Average offer rate	Asian	78.3%	70.7%	73.3%	85.2%	87.2%	88.6%
	Black	76.5%	70.6%	75.6%	84.4%	88.0%	88.7%
	Mixed	75.1%	71.6%	71.4%	86.8%	87.9%	88.2%
	White	74.2%	72.0%	74.9%	85.6%	87.2%	87.3%
	Other	73.6%	69.2%	70.1%	84.2%	84.9%	86.4%
Percentage point difference between offer rate and average offer rate	Asian	-0.4	-1.9	-1.5	-1.6	-0.7	-1.7
	Black	-2.3	-3.1	-4.9	-4.4	-2.0	-3.4
	Mixed	-1.2	-0.6	-2.1	1.1	-0.5	-0.4
	White	0.2	0.5	0.6	0.5	0.3	0.6
	Other	-2.0	-2.6	1.6	-2.4	-1.5	-2.3
Contribution of group to the average offer rate	Asian	0.197	0.183	0.196	0.193	0.180	0.174
	Black	0.107	0.122	0.129	0.142	0.137	0.138
	Mixed	0.070	0.078	0.093	0.091	0.091	0.089
	White	0.832	0.830	0.832	0.829	0.819	0.808
	Other	0.068	0.076	0.061	0.047	0.048	0.044

### P.13 18 year old offer rate by ethnic group

Note: The line for a group is not plotted when that group made fewer than 10 applications in any of the years from 2010-2015.

- Asian
- Black
- Mixed
- White
- Other



### P.14 Percentage point difference between 18 year old offer rate and average offer rate by ethnic group

Note: The line for a group is not plotted when that group made fewer than 50 applications in any of the years from 2010-2015.

- Asian
- Black
- Mixed
- White
- Other



### P.15 Applicants (all ages)

Statistic	2010	2011	2012	2013	2014	2015
June deadline applicants	33,520	36,580	30,285	30,085	31,105	33,160
Placed June deadline applicants	5,825	6,150	5,285	5,955	6,730	6,205
All placed applicants	6,385	6,545	6,110	6,610	7,515	7,140

### P.16 Applications (all ages)

Statistic	2010	2011	2012	2013	2014	2015
June deadline applications	37,175	40,550	33,430	32,820	33,950	36,255
Offers	24,455	26,255	23,175	26,370	27,745	30,050
Offer rate	65.8%	64.8%	69.3%	80.4%	81.7%	82.9%

### P.17 Applicants (all ages) by sex

Statistic	Sex	2010	2011	2012	2013	2014	2015
June deadline applicants	Men	14,955	16,380	13,400	13,575	13,740	14,280
	Women	18,565	20,200	16,885	16,515	17,365	18,880
Placed June deadline applicants	Men	2,665	2,780	2,300	2,580	2,835	2,545
	Women	3,160	3,370	2,985	3,375	3,895	3,660
All placed applicants	Men	2,940	2,970	2,715	2,900	3,215	3,000
	Women	3,445	3,575	3,395	3,710	4,300	4,140

### P.18 Applications (all ages) by sex

Statistic	Sex	2010	2011	2012	2013	2014	2015
June deadline applications	Men	16,675	18,240	14,850	14,885	14,990	15,670
	Women	20,500	22,305	18,580	17,935	18,965	20,585
Offers	Men	12,145	12,585	10,710	12,180	12,195	13,000
	Women	12,310	13,670	12,465	14,190	15,550	17,045
Offer rate	Men	72.9%	69.0%	72.1%	81.8%	81.4%	83.0%
	Women	60.0%	61.3%	67.1%	79.1%	82.0%	82.8%

### P.19 Applicants (all ages) by POLAR3 quintile

Statistic	POLAR3 quintile	2010	2011	2012	2013	2014	2015
June deadline applicants	Quintile 1	4,100	4,580	3,900	3,970	4,220	4,495
	Quintile 2	5,635	6,250	5,275	5,150	5,545	5,935
	Quintile 3	6,345	6,790	5,750	5,905	5,930	6,515
	Quintile 4	7,485	8,130	6,555	6,650	6,780	7,280
	Quintile 5	9,865	10,760	8,735	8,375	8,565	8,850
Placed June deadline applicants	Quintile 1	740	830	750	880	940	905
	Quintile 2	1,050	1,070	880	1,080	1,220	1,150
	Quintile 3	1,075	1,115	970	1,140	1,300	1,195
	Quintile 4	1,240	1,330	1,090	1,290	1,430	1,280
	Quintile 5	1,710	1,790	1,590	1,555	1,835	1,660
All placed applicants	Quintile 1	825	885	880	965	1,055	1,050
	Quintile 2	1,155	1,140	1,030	1,185	1,350	1,300
	Quintile 3	1,160	1,185	1,130	1,270	1,420	1,380
	Quintile 4	1,350	1,410	1,245	1,425	1,600	1,475
	Quintile 5	1,875	1,920	1,810	1,755	2,080	1,920

### P.20 Applications (all ages) by POLAR3 quintile

Statistic	POLAR3 quintile	2010	2011	2012	2013	2014	2015
June deadline applications	Quintile 1	4,750	5,330	4,500	4,515	4,795	5,130
	Quintile 2	6,460	7,065	5,965	5,785	6,120	6,670
	Quintile 3	6,990	7,530	6,300	6,425	6,445	7,090
	Quintile 4	8,145	8,875	7,095	7,105	7,305	7,795
	Quintile 5	10,725	11,680	9,500	8,950	9,215	9,485
Offers	Quintile 1	2,935	3,285	2,915	3,455	3,730	4,130
	Quintile 2	4,195	4,435	4,020	4,580	4,900	5,430
	Quintile 3	4,465	4,830	4,305	5,120	5,235	5,840
	Quintile 4	5,420	5,770	5,025	5,775	6,070	6,565
	Quintile 5	7,380	7,895	6,870	7,415	7,755	8,005
Offer rate	Quintile 1	61.8%	61.6%	64.7%	76.5%	77.8%	80.5%
	Quintile 2	64.9%	62.8%	67.4%	79.1%	80.0%	81.5%
	Quintile 3	63.8%	64.1%	68.3%	79.7%	81.2%	82.4%
	Quintile 4	66.6%	65.0%	70.8%	81.3%	83.1%	84.2%
	Quintile 5	68.8%	67.6%	72.3%	82.9%	84.2%	84.4%

## P.21 Applicants (all ages) by ethnic group

Statistic	Ethnic group	2010	2011	2012	2013	2014	2015
June deadline applicants	Asian	3,780	4,055	3,425	3,250	3,285	3,530
	Black	2,055	2,365	2,120	2,160	2,320	2,755
	Mixed	1,250	1,480	1,200	1,210	1,375	1,520
	White	26,055	28,260	23,155	23,095	23,740	24,895
	Other	230	260	265	275	265	325
Placed June deadline applicants	Asian	615	635	560	570	605	570
	Black	300	335	370	420	465	455
	Mixed	230	270	210	250	310	285
	White	4,625	4,860	4,080	4,645	5,280	4,820
	Other	40	30	45	45	50	50
All placed applicants	Asian	730	700	695	655	720	705
	Black	370	380	485	520	560	590
	Mixed	265	295	265	285	345	340
	White	4,935	5,110	4,585	5,060	5,800	5,400
	Other	40	35	55	60	55	65

## P.22 Applications (all ages) by ethnic group

Statistic	Ethnic group	2010	2011	2012	2013	2014	2015
June deadline applications	Asian	4,270	4,535	3,845	3,595	3,590	3,835
	Black	2,240	2,565	2,280	2,300	2,460	2,895
	Mixed	1,410	1,640	1,350	1,340	1,515	1,640
	White	28,845	31,330	25,525	25,165	25,960	27,380
	Other	255	280	295	315	285	340
Offers	Asian	2,925	2,890	2,605	2,840	2,910	3,190
	Black	1,360	1,490	1,450	1,700	1,890	2,260
	Mixed	915	1,010	890	1,060	1,210	1,345
	White	18,990	20,565	17,945	20,475	21,400	22,840
	Other	170	170	200	220	230	280
Offer rate	Asian	68.5%	63.7%	67.8%	79.0%	81.1%	83.2%
	Black	60.7%	58.1%	63.7%	74.0%	76.7%	78.1%
	Mixed	65.0%	61.5%	66.2%	79.1%	79.9%	82.1%
	White	65.8%	65.6%	70.3%	81.4%	82.4%	83.4%
	Other	66.0%	60.5%	67.5%	69.2%	80.6%	81.8%

## Technical Notes and Definitions

### UCAS undergraduate scheme

#### Adjustment

Adjustment allows applicants who have met and exceeded the terms of their conditional firm offer to seek and find a place at another provider whilst keeping their place at their original firm choice provider.

#### Clearing

Clearing is a route for applicants that are not placed and holding no offers to find a place on courses with vacancies.

#### Cycle year

The UCAS application cycle which runs from September to October the following year. For example the 2015 cycle runs from September 2014 through to October 2015.

#### End of cycle

The point in the cycle to which the numbers in this report refer, and the point at which the cycle is closed such that no more applications or offers can be made, and no more applicants can be placed. Numbers reported at the end of cycle exclude information on a small number of applicants who cancelled during the cycle.

#### Extra

Applicants who are unsuccessful in obtaining an offer or decline all offers may be eligible to apply through Extra, where they can apply to one further course at a time. Extra operates from 25 February until early July. It provides applicants who are eligible the possibility of obtaining an offer before exam results are published and Clearing starts.

#### June 30 deadline

The deadline for main scheme applications. Applicants who apply after this date will go directly into Clearing.

#### Record of Prior Acceptance (RPA)

RPA is an acceptance route used when a provider informs UCAS of applicants it has accepted outside of the normal application process (e.g. individuals who have applied directly to the provider).

### Reporting groups

#### Ethnic group

High level grouping of ethnic origin as declared by the applicant: 'White', 'Black', 'Asian', 'Mixed', 'Other', 'Unknown'. Applicants who declare themselves as 'Unknown' ethnic origin are not reported in these tables, but are included in the associated csv data file.

#### POLAR3 quintile

Developed by HEFCE, POLAR3 classifies small areas across the UK into five groups according to their level of young participation in Higher Education. Each of these groups represents around 20 per cent of young people and is ranked from Quintile 1 (areas with the lowest young participation rates, considered as the most disadvantaged) to Quintile 5 (highest young participation rates, considered most advantaged). POLAR3 is based on the participation rates of young people between 2005 and 2009 who entered Higher Education between 2005-06 and 2010-11, therefore is most suitable for applicants aged 19 and under. These groups are assigned using the postcode declared by the applicant at the time of their application. If a UK postcode is invalid, considered unsafe for measurement or there is no link to Census geography possible then the applicant is not assigned to a quintile. Applicants with no POLAR3 quintile are not reported.

#### Sex

Sex as declared by the applicant.

### **SIMD quintile**

Scottish index of multiple deprivation (SIMD) for 2012 identifies small area concentrations of multiple deprivation across all of Scotland, providing a relative measure of deprivation amongst 6505 small areas (data zones) based on 7 socio-economic domains. These small areas are classified into five groups ranked from Quintile 1 (considered the most deprived) to Quintile 5 (considered least deprived), with equal populations in each quintile. Quintiles are assigned using the postcode declared by the applicant, applicants declaring invalid postcodes are classified as 'Not assigned' and are not reported.

SIMD is only defined for applicants domiciled in Scotland, therefore any applicants domiciled outside of Scotland cannot be assigned to an SIMD quintile and so are not reported for this measure.

SIMD is only reported for providers in Scotland. Application and entry rates by SIMD are reported in the 2015 End of Cycle Report and the 2016 cycle January deadline application rate report.

### **Statistics reported in the tables**

#### **All placed applicants**

The number of applicants placed for entry into higher education at the provider through one of their choices, including any choices made through Extra, or via Adjustment, Clearing or RPA.

#### **All placed applicants per 10,000 population**

The number of total UK domiciled 18 year old placed applicants for entry into higher education at the provider divided by the number of UK 18 year olds in the population, multiplied by 10,000. This gives the number of 18 year olds, for every 10,000 in the population, that were placed at the provider through one of their choices, including any choices made through Extra, or via Adjustment, Clearing or RPA. It is an alternative way of expressing the entry rate to a provider. By referencing the underlying population this statistic shows how the number of placed applicants is changing in relation to the available pool of potential applicants and so gives the chance that somebody from the group will be placed at a provider.

This statistic is only reported for 18 year olds.

#### **Average offer rate**

The offer rate that you might expect if the predicted grades and subject choice of applicants were the only factors that influenced whether an applicant was made an offer by the provider. The average offer rate is calculated by dividing applicants according to their specific combination of grades (for A levels the best three predicted grades are used, for BTECs, International Baccalaureate and Scottish Highers and Advanced Highers, predicted grades along with any grades already achieved upon applying are used) and subject choice. For each combination the number of main scheme offers is divided by the number of main scheme applications, to give an overall offer rate. This is then multiplied by the number of applications made by the group for which the average offer rate is being calculated (for example POLAR3 quintile 1), to give an average number of offers for that group. These average number of offers are then added together across all combinations of predicted grade and subject and divided by the number of main scheme applications from the group to give the average offer rate.

The average offer rate does not attempt to control for any other factors that may play a part in the decision to make an offer, such as the subject of the qualifications studied, their relevance to a course, or the grade in each subject; higher numbers of A levels being studied; the exact profile of grades predicted; personal statements; teacher references; interviews; or any other criteria (such as work experience or portfolios) that may be part of the admissions decision.

This statistic is only reported for 18 year olds.



### Contribution of group to the average offer rate

The way in which the average offer rate is defined means that the pattern of application and offers of a group (for example POLAR3 quintile 1) will always contribute, in part, to the average offer rate for that group. When this contribution is large, the average offer rate will mainly reflect the patterns for the group, meaning that the value of the average offer rate will be similar to the offer rate, the percentage point difference statistic will be small, and any real difference between the offer rate and what might be expected given the predicted grades and subject choices of the applicants will be difficult to detect.

Values of the contribution of group to the average offer rate range between 0 and 1. The closer the value is to 1 the greater the contribution a group makes to its own average offer rate.

This statistic is only reported for 18 year olds.

### Placed June deadline applicants

An applicant who has been placed for entry into higher education at the provider through a June deadline application.

### Placed June deadline applicants per 10,000 population

The number of UK domiciled 18 year old placed June deadline applicants at the provider divided by the number of UK 18 year olds in the population, multiplied by 10,000. This gives the number of 18 year olds, for every 10,000 in the population, that were placed at the provider through one of their June deadline applications. It is an alternative way of expressing the entry rate to a provider, but for placed June deadline applicants only. By referencing the underlying population this statistic shows how the number of placed June deadline applicants is changing in relation to the available pool of potential 18 year old applicants and so gives the chance that somebody from the group will be placed at a provider through a June deadline application.

This statistic is only reported for 18 year olds.

### June deadline applications

An application (or choice) to a course in higher education to the provider that is made by the June 30 deadline. Each applicant can make up to five choices this way. The number of June deadline applications does not include choices made through the following routes: Clearing, Extra, Adjustment and RPAs. Applications made to October deadline courses received after the October deadline are not included in these statistics.

### June deadline applicants

The number of applicants that made at least one application to the provider by the June 30 deadline.

### June deadline applicants per 10,000 population

The number of UK domiciled 18 year old June deadline applicants to the provider divided by the number of UK 18 year olds in the population, multiplied by 10,000. This gives the number of 18 year olds, for every 10,000 in the population, who applied by the June 30 deadline. It is equivalent to the application rate. By referencing the underlying population this statistic shows how the number of June deadline applicants is changing in relation to the available pool of potential 18 year old applicants and so gives the chance that somebody from the group will apply to a provider by the June 30 deadline.

This statistic is only reported for 18 year olds.

### Offers

An offer is defined as a provider's decision in response to an application to offer a place to an applicant, often subject to the applicant satisfying academic and/or other criteria, via a June deadline application (i.e. does not cover choices made through the following routes: Clearing, Extra, Adjustment and RPAs).

### Offer rate

The number of offers made divided by the number of June deadline applications. This gives the proportion of all June deadline applications to the provider that received an offer.

### Percentage point difference between offer rate and average offer rate

The offer rate minus the average offer rate.

The percentage point difference can be compared to the expected range of statistical variation resulting from the calculation of the average offer rate using the Average Offer Rate Lookup Table. Where the value of the percentage point difference lies outside of this range, the percentage point difference may be considered to represent a real difference between the offer rate and the average offer rate.

### Other definitions

#### Age

This analysis uses country-specific age definitions that align with the cut off points for school and college cohorts within the different administrations of the UK. For England and Wales, ages are defined on the 31 August, for Northern Ireland on the 1 July and for Scotland on the 28 February the following year. Defining ages in this way matches the assignment of children to school cohorts. For applicants outside of the UK a cohort cut off of 31 August has been used.

#### Provider

A higher education provider - a university or college.

#### UK domiciled

Declared area of permanent residence within England, Northern Ireland, Scotland and Wales. Applicants from the Channel Islands and Isle of Man are not included.