

## L51 Liverpool John Moores University (LJMU)

**Cycle years:** 2010 - 2015

**Cycle Reference Point:** End of Cycle

**Applicant coverage:** UK domiciled

**Reporting groups:** Sex, POLAR3, ethnic group

**Applicant statistics:** June deadline applicants, placed June deadline applicants, all placed applicants, June deadline applicants per 10,000 population, placed June deadline applicants per 10,000 population, all placed applicants per 10,000 population

**Application statistics:** June deadline applications, offers, offer rate, average offer rate, percentage point difference between offer rate and average offer rate, contribution of group to the average offer rate

**Non-disclosure controls:** To avoid the disclosure of information about any individual the following measures are taken

- Applicants, placed applicants, applications and offers are rounded to the nearest 5.
- Applicants/placed applicants per 10,000 population figures are reported as 0 if the applicant/placed applicant figures are rounded to 0.
- All statistics related to the offer rate are not reported when the number of applications for a group is less than 10. The percentage point difference between the offer rate and the average offer rate is not reported when the number of applications for a group is less than 50.
- Offer rates are reported as 0% if there are fewer than 5 offers, and 100% if the number of offers is within 5 of the number of applications. When the offer rate is reported as 0% or 100%, it is reported in italics.

### Contents:

18 year old applicants:	P.1
18 year old applications:	P.2
18 year old applicants by sex:	P.3
18 year old applications by sex:	P.4
18 year old applicants by POLAR3 quintile:	P.7
18 year old applications by POLAR3 quintile:	P.8
18 year old applicants by ethnic group:	P.11
18 year old applications by ethnic group:	P.12
Applicants (all ages):	P.15
Applications (all ages):	P.16
Applicants (all ages) by sex:	P.17
Applications (all ages) by sex:	P.18
Applicants (all ages) by POLAR3 quintile:	P.19
Applications (all ages) by POLAR3 quintile:	P.20
Applicants (all ages) by ethnic group:	P.21
Applications (all ages) by ethnic group:	P.22

## P.1 18 year old applicants

Statistic	2010	2011	2012	2013	2014	2015
June deadline applicants	14,190	13,745	13,520	14,585	15,035	15,820
Placed June deadline applicants	2,300	2,385	2,220	2,580	2,730	2,750
All placed applicants	2,725	2,960	2,595	3,065	3,200	3,325
June deadline applicants per 10,000 population	179.7	178.5	174.8	191.6	199.6	206.5
Placed June deadline applicants per 10,000	29.1	31.0	28.7	33.9	36.2	35.9
All placed applicants per 10,000 population	34.5	38.4	33.5	40.3	42.5	43.4

## P.2 18 year old applications

Statistic	2010	2011	2012	2013	2014	2015
June deadline applications	16,470	15,740	15,120	16,025	16,605	17,580
Offers	11,060	10,925	11,465	12,255	13,260	13,775
Offer rate	67.1%	69.4%	75.8%	76.5%	79.9%	78.4%

### P.3 18 year old applicants by sex

Statistic	Sex	2010	2011	2012	2013	2014	2015
June deadline applicants	Men	5,645	5,475	5,445	5,800	6,095	6,240
	Women	8,545	8,270	8,075	8,780	8,940	9,580
Placed June deadline applicants	Men	955	1,060	1,015	1,115	1,185	1,250
	Women	1,345	1,325	1,205	1,470	1,545	1,495
All placed applicants	Men	1,145	1,310	1,175	1,315	1,380	1,500
	Women	1,585	1,650	1,420	1,750	1,825	1,825
June deadline applicants per 10,000 population	Men	140.5	139.1	137.2	148.6	157.5	159.0
	Women	220.3	219.6	214.3	237.0	244.2	256.4
Placed June deadline applicants per 10,000 population	Men	23.8	27.0	25.5	28.5	30.7	31.9
	Women	34.6	35.1	32.0	39.6	42.2	40.0
All placed applicants per 10,000 population	Men	28.5	33.2	29.7	33.7	35.6	38.2
	Women	40.8	43.8	37.6	47.2	49.8	48.8

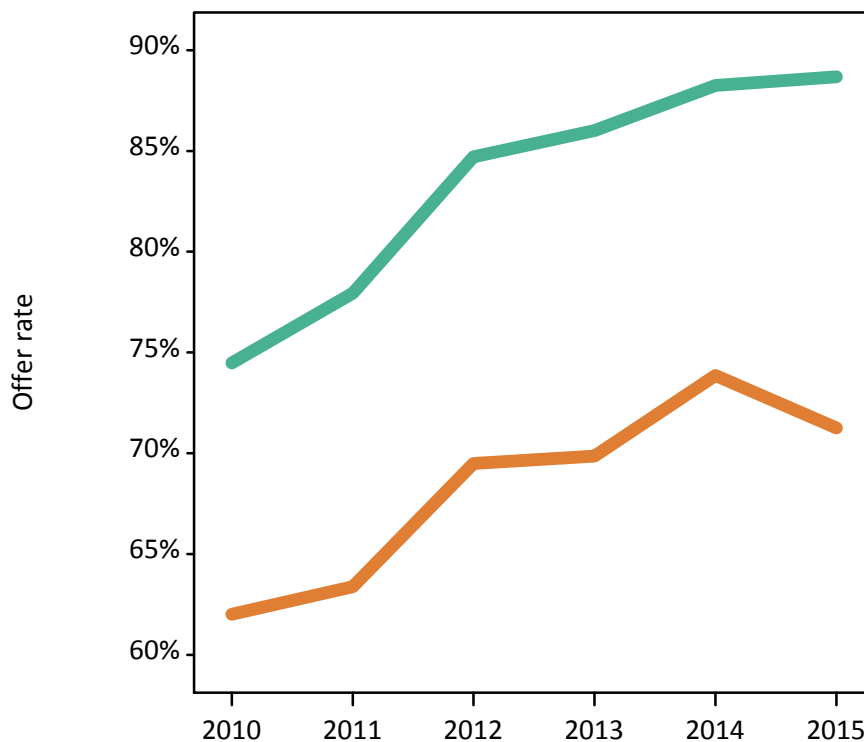
### P.4 18 year old applications by sex

Statistic	Sex	2010	2011	2012	2013	2014	2015
June deadline applications	Men	6,765	6,535	6,305	6,570	6,935	7,180
	Women	9,705	9,200	8,815	9,455	9,670	10,395
Offers	Men	5,040	5,095	5,340	5,650	6,120	6,370
	Women	6,020	5,830	6,125	6,605	7,140	7,405
Offer rate	Men	74.5%	77.9%	84.7%	86.0%	88.2%	88.7%
	Women	62.0%	63.4%	69.5%	69.9%	73.9%	71.2%
Average offer rate	Men	74.9%	78.0%	85.0%	86.1%	88.6%	89.2%
	Women	61.7%	63.4%	69.3%	69.8%	73.6%	70.9%
Percentage point difference between offer rate and average offer rate	Men	-0.4	-0.0	-0.3	-0.0	-0.3	-0.5
	Women	0.3	0.0	0.2	0.0	0.2	0.3
Contribution of group to the average offer rate	Men	0.604	0.615	0.605	0.612	0.619	0.615
	Women	0.724	0.727	0.717	0.730	0.727	0.734

### P.5 18 year old offer rate by sex

Note: The line for a group is not plotted when that group made fewer than 10 applications in any of the years from 2010-2015.

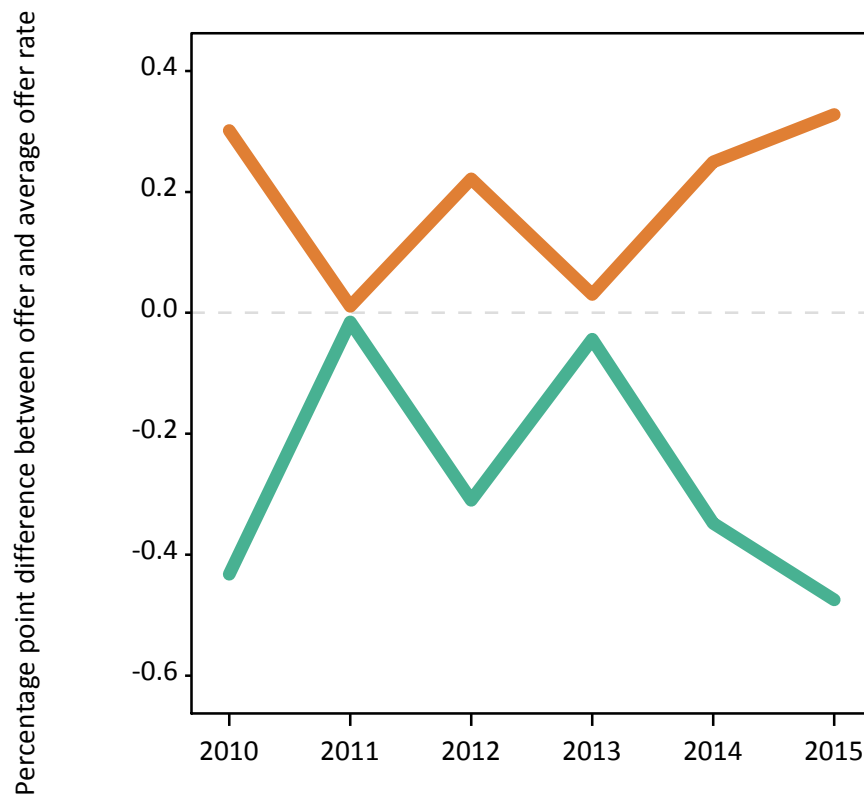
Men  
Women



### P.6 Percentage point difference between 18 year old offer rate and average offer rate by sex

Note: The line for a group is not plotted when that group made fewer than 50 applications in any of the years from 2010-2015.

Men  
Women



## P.7 18 year old applicants by POLAR3 quintile

Statistic	POLAR3 quintile	2010	2011	2012	2013	2014	2015
June deadline applicants	Quintile 1	2,210	2,075	2,155	2,320	2,540	2,730
	Quintile 2	2,465	2,485	2,570	2,680	2,825	3,015
	Quintile 3	2,625	2,515	2,600	2,855	2,875	3,000
	Quintile 4	3,395	3,320	3,125	3,425	3,420	3,630
	Quintile 5	3,470	3,325	3,050	3,285	3,360	3,425
Placed June deadline applicants	Quintile 1	390	385	425	465	525	525
	Quintile 2	455	440	430	480	555	545
	Quintile 3	355	380	385	475	455	455
	Quintile 4	545	605	515	560	605	620
	Quintile 5	550	570	460	595	585	590
All placed applicants	Quintile 1	455	445	470	540	600	620
	Quintile 2	510	520	495	570	635	650
	Quintile 3	425	500	445	555	545	560
	Quintile 4	650	750	615	660	710	755
	Quintile 5	685	740	560	730	700	730
June deadline applicants per 10,000 population	Quintile 1	149.4	144.5	151.3	166.3	182.4	194.9
	Quintile 2	160.4	165.2	171.3	181.8	193.1	202.9
	Quintile 3	165.1	163.6	168.4	187.3	190.9	195.3
	Quintile 4	213.1	212.0	197.1	218.9	221.9	231.8
	Quintile 5	204.6	200.8	181.5	198.6	206.0	204.6
Placed June deadline applicants per 10,000 population	Quintile 1	26.5	26.8	29.7	33.5	37.8	37.6
	Quintile 2	29.6	29.1	28.6	32.6	37.8	36.8
	Quintile 3	22.2	24.7	25.0	31.2	30.4	29.8
	Quintile 4	34.3	38.7	32.5	35.7	39.2	39.7
	Quintile 5	32.5	34.6	27.3	36.0	35.7	35.4
All placed applicants per 10,000 population	Quintile 1	30.7	30.8	33.1	38.7	43.2	44.3
	Quintile 2	33.3	34.6	33.1	38.8	43.5	43.8
	Quintile 3	26.6	32.6	28.9	36.5	36.1	36.6
	Quintile 4	40.8	47.9	38.7	42.1	46.1	48.2
	Quintile 5	40.4	44.6	33.5	44.3	43.0	43.6

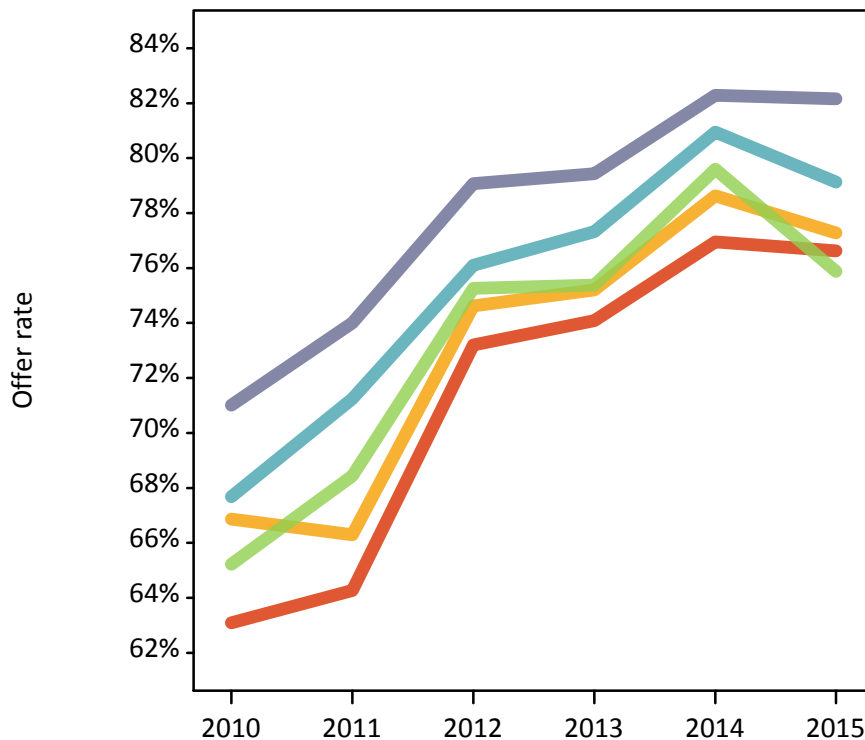
## P.8 18 year old applications by POLAR3 quintile

Statistic	POLAR3 quintile	2010	2011	2012	2013	2014	2015
June deadline applications	Quintile 1	2,670	2,445	2,515	2,630	2,890	3,130
	Quintile 2	2,940	2,915	2,910	2,950	3,140	3,370
	Quintile 3	2,940	2,795	2,815	3,090	3,110	3,260
	Quintile 4	3,925	3,785	3,490	3,735	3,750	4,005
	Quintile 5	3,975	3,775	3,370	3,590	3,690	3,790
Offers	Quintile 1	1,685	1,570	1,840	1,950	2,225	2,395
	Quintile 2	1,965	1,930	2,175	2,220	2,470	2,605
	Quintile 3	1,915	1,910	2,120	2,330	2,475	2,475
	Quintile 4	2,655	2,700	2,655	2,890	3,035	3,170
	Quintile 5	2,825	2,790	2,665	2,850	3,040	3,110
Offer rate	Quintile 1	63.1%	64.3%	73.2%	74.1%	77.0%	76.6%
	Quintile 2	66.9%	66.3%	74.6%	75.2%	78.6%	77.3%
	Quintile 3	65.2%	68.4%	75.3%	75.4%	79.6%	75.9%
	Quintile 4	67.7%	71.2%	76.1%	77.3%	80.9%	79.1%
	Quintile 5	71.0%	74.0%	79.1%	79.4%	82.3%	82.2%
Average offer rate	Quintile 1	63.6%	66.1%	74.2%	74.8%	78.1%	77.1%
	Quintile 2	66.6%	67.3%	74.8%	75.2%	78.5%	78.0%
	Quintile 3	65.7%	68.9%	74.9%	75.2%	79.7%	76.6%
	Quintile 4	68.0%	70.3%	76.0%	77.0%	80.1%	78.8%
	Quintile 5	70.1%	72.7%	78.6%	79.5%	82.3%	80.9%
Percentage point difference between offer rate and average offer rate	Quintile 1	-0.5	-1.8	-1.0	-0.7	-1.1	-0.4
	Quintile 2	0.2	-1.0	-0.2	0.0	0.1	-0.7
	Quintile 3	-0.4	-0.4	0.4	0.2	-0.1	-0.7
	Quintile 4	-0.3	1.0	0.1	0.4	0.9	0.3
	Quintile 5	0.9	1.3	0.5	-0.0	-0.1	1.3
Contribution of group to the average offer rate	Quintile 1	0.236	0.227	0.235	0.230	0.231	0.235
	Quintile 2	0.231	0.237	0.243	0.241	0.238	0.237
	Quintile 3	0.232	0.227	0.233	0.242	0.237	0.231
	Quintile 4	0.290	0.292	0.283	0.281	0.273	0.276
	Quintile 5	0.308	0.306	0.290	0.286	0.283	0.280

### P.9 18 year old offer rate by POLAR3 quintile

Note: The line for a group is not plotted when that group made fewer than 10 applications in any of the years from 2010-2015.

- Quintile 1
- Quintile 2
- Quintile 3
- Quintile 4
- Quintile 5



### P.10 Percentage point difference between 18 year old offer rate and average offer rate by POLAR3 quintile

Note: The line for a group is not plotted when that group made fewer than 50 applications in any of the years from 2010-2015.

- Quintile 1
- Quintile 2
- Quintile 3
- Quintile 4
- Quintile 5



## P.11 18 year old applicants by ethnic group

Statistic	Ethnic group	2010	2011	2012	2013	2014	2015
June deadline applicants	Asian	685	715	805	840	765	840
	Black	130	130	185	250	235	280
	Mixed	285	285	320	350	395	430
	White	13,010	12,560	12,120	13,045	13,540	14,160
	Other	45	35	65	70	70	85
Placed June deadline applicants	Asian	80	85	80	100	80	85
	Black	15	30	30	40	35	40
	Mixed	55	55	55	65	80	80
	White	2,140	2,210	2,040	2,355	2,515	2,525
	Other	10	5	5	20	20	15
All placed applicants	Asian	100	130	100	125	110	120
	Black	20	35	35	50	40	55
	Mixed	65	65	65	75	95	100
	White	2,525	2,720	2,375	2,785	2,930	3,025
	Other	10	10	10	20	20	20
June deadline applicants per 10,000 population	Asian	110.5	113.3	124.5	127.2	113.1	118.7
	Black	48.9	47.2	66.4	84.5	78.2	87.7
	Mixed	123.9	117.3	123.6	129.8	136.9	139.2
	White	194.0	194.0	187.7	207.3	219.5	227.2
	Other	58.4	43.2	71.2	79.4	76.3	88.3
Placed June deadline applicants per 10,000 population	Asian	12.8	13.6	12.2	15.3	11.6	12.0
	Black	5.7	10.2	10.3	13.8	11.5	12.6
	Mixed	22.9	21.9	21.9	23.3	27.5	25.3
	White	31.9	34.1	31.6	37.4	40.7	40.5
	Other	14.3	6.2	7.9	21.0	19.3	16.6
All placed applicants per 10,000 population	Asian	16.5	20.3	15.6	19.1	15.9	17.2
	Black	8.4	13.5	12.8	16.2	13.9	17.3
	Mixed	27.6	26.0	24.6	28.1	32.3	32.8
	White	37.6	42.0	36.8	44.3	47.5	48.5
	Other	15.6	9.9	12.4	23.2	21.5	18.7



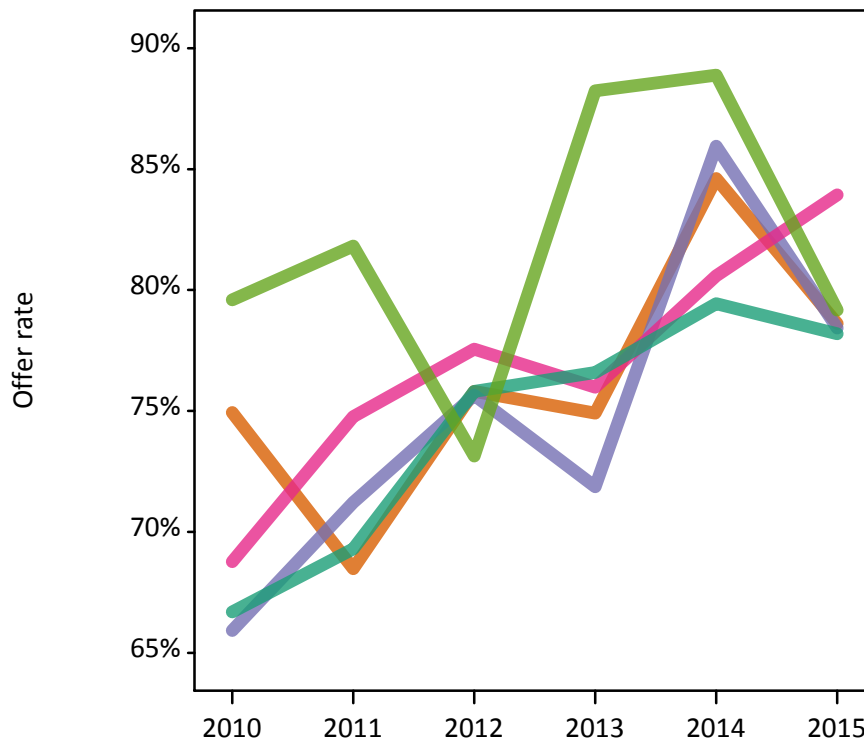
## P.12 18 year old applications by ethnic group

Statistic	Ethnic group	2010	2011	2012	2013	2014	2015
June deadline applications	Asian	720	740	835	870	800	870
	Black	135	140	195	265	240	290
	Mixed	315	315	350	385	410	475
	White	15,215	14,480	13,645	14,400	15,045	15,815
	Other	50	45	65	85	80	95
Offers	Asian	540	505	635	650	675	685
	Black	90	100	145	190	210	230
	Mixed	220	235	275	290	330	395
	White	10,150	10,035	10,345	11,030	11,950	12,365
	Other	40	35	50	75	70	75
Offer rate	Asian	74.9%	68.5%	75.8%	74.9%	84.6%	78.6%
	Black	65.9%	71.2%	75.6%	71.9%	86.0%	78.4%
	Mixed	68.8%	74.8%	77.6%	76.0%	80.6%	83.9%
	White	66.7%	69.3%	75.8%	76.6%	79.4%	78.2%
	Other	79.6%	81.8%	73.1%	88.2%	88.9%	79.2%
Average offer rate	Asian	72.7%	70.1%	77.7%	76.2%	83.6%	79.6%
	Black	70.1%	70.6%	74.8%	75.3%	84.6%	81.9%
	Mixed	66.7%	72.1%	77.6%	78.7%	82.1%	83.1%
	White	66.8%	69.3%	75.7%	76.4%	79.5%	78.1%
	Other	75.9%	82.0%	80.7%	88.1%	84.9%	77.6%
Percentage point difference between offer rate and average offer rate	Asian	2.3	-1.6	-1.9	-1.3	1.0	-1.0
	Black	-4.2	0.6	0.8	-3.4	1.3	-3.5
	Mixed	2.1	2.7	-0.1	-2.7	-1.5	0.8
	White	-0.1	0.0	0.1	0.2	-0.1	0.1
	Other	N/A	N/A	-7.6	0.2	4.0	1.6
Contribution of group to the average offer rate	Asian	0.269	0.243	0.274	0.241	0.205	0.179
	Black	0.108	0.065	0.098	0.097	0.085	0.064
	Mixed	0.066	0.076	0.073	0.079	0.088	0.077
	White	0.939	0.934	0.922	0.915	0.921	0.912
	Other	0.087	0.107	0.086	0.057	0.082	0.076

### P.13 18 year old offer rate by ethnic group

Note: The line for a group is not plotted when that group made fewer than 10 applications in any of the years from 2010-2015.

- Asian
- Black
- Mixed
- White
- Other



### P.14 Percentage point difference between 18 year old offer rate and average offer rate by ethnic group

Note: The line for a group is not plotted when that group made fewer than 50 applications in any of the years from 2010-2015.

- Asian
- Black
- Mixed
- White
- Other



### P.15 Applicants (all ages)

Statistic	2010	2011	2012	2013	2014	2015
June deadline applicants	27,110	26,960	25,595	27,685	28,395	28,800
Placed June deadline applicants	4,850	4,870	4,475	5,065	5,325	5,235
All placed applicants	5,695	5,955	5,275	6,105	6,400	6,400

### P.16 Applications (all ages)

Statistic	2010	2011	2012	2013	2014	2015
June deadline applications	32,035	31,285	29,055	30,935	31,970	32,515
Offers	18,465	18,640	18,910	20,235	22,120	22,465
Offer rate	57.6%	59.6%	65.1%	65.4%	69.2%	69.1%

### P.17 Applicants (all ages) by sex

Statistic	Sex	2010	2011	2012	2013	2014	2015
June deadline applicants	Men	11,250	11,235	10,465	11,345	11,650	11,560
	Women	15,860	15,725	15,130	16,340	16,750	17,235
Placed June deadline applicants	Men	2,220	2,340	2,090	2,350	2,380	2,445
	Women	2,630	2,530	2,385	2,710	2,945	2,790
All placed applicants	Men	2,615	2,835	2,465	2,790	2,840	2,995
	Women	3,080	3,125	2,805	3,315	3,560	3,410

### P.18 Applications (all ages) by sex

Statistic	Sex	2010	2011	2012	2013	2014	2015
June deadline applications	Men	13,850	13,630	12,345	13,170	13,555	13,585
	Women	18,190	17,655	16,710	17,765	18,415	18,930
Offers	Men	8,985	9,330	9,155	9,975	10,705	10,885
	Women	9,480	9,310	9,755	10,255	11,415	11,580
Offer rate	Men	64.9%	68.5%	74.2%	75.8%	79.0%	80.1%
	Women	52.1%	52.7%	58.4%	57.7%	62.0%	61.2%

### P.19 Applicants (all ages) by POLAR3 quintile

Statistic	POLAR3 quintile	2010	2011	2012	2013	2014	2015
June deadline applicants	Quintile 1	4,950	4,800	4,775	5,085	5,375	5,515
	Quintile 2	5,030	5,105	5,080	5,305	5,525	5,530
	Quintile 3	4,950	4,960	4,760	5,265	5,285	5,465
	Quintile 4	5,955	6,005	5,610	6,175	6,195	6,245
	Quintile 5	6,165	6,030	5,320	5,805	5,980	5,990
Placed June deadline applicants	Quintile 1	980	915	935	1,030	1,100	1,070
	Quintile 2	995	970	930	1,025	1,105	1,065
	Quintile 3	730	775	720	850	895	865
	Quintile 4	1,040	1,110	985	1,065	1,145	1,120
	Quintile 5	1,095	1,090	890	1,090	1,065	1,100
All placed applicants	Quintile 1	1,115	1,085	1,070	1,215	1,325	1,295
	Quintile 2	1,135	1,165	1,085	1,220	1,310	1,290
	Quintile 3	865	980	845	1,015	1,080	1,055
	Quintile 4	1,240	1,360	1,170	1,290	1,370	1,365
	Quintile 5	1,330	1,360	1,090	1,355	1,305	1,380

### P.20 Applications (all ages) by POLAR3 quintile

Statistic	POLAR3 quintile	2010	2011	2012	2013	2014	2015
June deadline applications	Quintile 1	6,080	5,705	5,620	5,825	6,230	6,410
	Quintile 2	6,090	6,105	5,840	5,980	6,330	6,305
	Quintile 3	5,620	5,545	5,250	5,780	5,790	6,025
	Quintile 4	7,030	6,950	6,325	6,860	6,920	7,000
	Quintile 5	7,155	6,915	5,965	6,440	6,665	6,720
Offers	Quintile 1	3,220	3,070	3,400	3,535	4,020	4,155
	Quintile 2	3,475	3,475	3,715	3,780	4,260	4,270
	Quintile 3	3,130	3,215	3,360	3,720	3,995	4,035
	Quintile 4	4,180	4,355	4,250	4,640	4,940	5,005
	Quintile 5	4,430	4,485	4,155	4,525	4,875	4,960
Offer rate	Quintile 1	52.9%	53.8%	60.5%	60.7%	64.5%	64.8%
	Quintile 2	57.1%	56.9%	63.6%	63.2%	67.3%	67.8%
	Quintile 3	55.7%	58.0%	64.0%	64.4%	69.0%	67.0%
	Quintile 4	59.5%	62.7%	67.2%	67.6%	71.4%	71.5%
	Quintile 5	61.9%	64.8%	69.7%	70.3%	73.1%	73.9%

## P.21 Applicants (all ages) by ethnic group

Statistic	Ethnic group	2010	2011	2012	2013	2014	2015
June deadline applicants	Asian	1,450	1,545	1,650	1,775	1,600	1,650
	Black	680	715	770	820	785	830
	Mixed	665	645	700	725	775	855
	White	24,065	23,865	22,210	24,060	24,960	25,135
	Other	130	115	175	225	210	240
Placed June deadline applicants	Asian	180	195	180	205	190	180
	Black	95	90	95	120	125	100
	Mixed	135	120	135	145	150	170
	White	4,385	4,440	4,020	4,535	4,810	4,725
	Other	35	15	30	45	40	45
All placed applicants	Asian	245	280	235	270	265	270
	Black	120	115	125	150	160	140
	Mixed	155	140	155	175	185	215
	White	5,100	5,365	4,685	5,425	5,705	5,680
	Other	40	25	35	55	50	65

## P.22 Applications (all ages) by ethnic group

Statistic	Ethnic group	2010	2011	2012	2013	2014	2015
June deadline applications	Asian	1,565	1,640	1,750	1,865	1,700	1,720
	Black	765	775	835	885	850	890
	Mixed	765	730	800	810	850	945
	White	28,655	27,920	25,380	27,025	28,265	28,580
	Other	155	135	200	255	235	275
Offers	Asian	1,005	955	1,190	1,240	1,285	1,240
	Black	325	280	380	445	490	475
	Mixed	425	455	520	520	590	705
	White	16,550	16,835	16,630	17,785	19,530	19,795
	Other	95	70	130	180	175	190
Offer rate	Asian	64.0%	58.4%	68.1%	66.4%	75.5%	72.0%
	Black	42.4%	36.0%	45.4%	50.3%	58.0%	53.1%
	Mixed	55.6%	62.3%	65.3%	64.4%	69.4%	74.7%
	White	57.8%	60.3%	65.5%	65.8%	69.1%	69.3%
	Other	63.0%	51.9%	64.3%	69.3%	73.4%	69.2%

## Technical Notes and Definitions

### UCAS undergraduate scheme

#### Adjustment

Adjustment allows applicants who have met and exceeded the terms of their conditional firm offer to seek and find a place at another provider whilst keeping their place at their original firm choice provider.

#### Clearing

Clearing is a route for applicants that are not placed and holding no offers to find a place on courses with vacancies.

#### Cycle year

The UCAS application cycle which runs from September to October the following year. For example the 2015 cycle runs from September 2014 through to October 2015.

#### End of cycle

The point in the cycle to which the numbers in this report refer, and the point at which the cycle is closed such that no more applications or offers can be made, and no more applicants can be placed. Numbers reported at the end of cycle exclude information on a small number of applicants who cancelled during the cycle.

#### Extra

Applicants who are unsuccessful in obtaining an offer or decline all offers may be eligible to apply through Extra, where they can apply to one further course at a time. Extra operates from 25 February until early July. It provides applicants who are eligible the possibility of obtaining an offer before exam results are published and Clearing starts.

#### June 30 deadline

The deadline for main scheme applications. Applicants who apply after this date will go directly into Clearing.

#### Record of Prior Acceptance (RPA)

RPA is an acceptance route used when a provider informs UCAS of applicants it has accepted outside of the normal application process (e.g. individuals who have applied directly to the provider).

### Reporting groups

#### Ethnic group

High level grouping of ethnic origin as declared by the applicant: 'White', 'Black', 'Asian', 'Mixed', 'Other', 'Unknown'. Applicants who declare themselves as 'Unknown' ethnic origin are not reported in these tables, but are included in the associated csv data file.

#### POLAR3 quintile

Developed by HEFCE, POLAR3 classifies small areas across the UK into five groups according to their level of young participation in Higher Education. Each of these groups represents around 20 per cent of young people and is ranked from Quintile 1 (areas with the lowest young participation rates, considered as the most disadvantaged) to Quintile 5 (highest young participation rates, considered most advantaged). POLAR3 is based on the participation rates of young people between 2005 and 2009 who entered Higher Education between 2005-06 and 2010-11, therefore is most suitable for applicants aged 19 and under. These groups are assigned using the postcode declared by the applicant at the time of their application. If a UK postcode is invalid, considered unsafe for measurement or there is no link to Census geography possible then the applicant is not assigned to a quintile. Applicants with no POLAR3 quintile are not reported.

#### Sex

Sex as declared by the applicant.

### **SIMD quintile**

Scottish index of multiple deprivation (SIMD) for 2012 identifies small area concentrations of multiple deprivation across all of Scotland, providing a relative measure of deprivation amongst 6505 small areas (data zones) based on 7 socio-economic domains. These small areas are classified into five groups ranked from Quintile 1 (considered the most deprived) to Quintile 5 (considered least deprived), with equal populations in each quintile. Quintiles are assigned using the postcode declared by the applicant, applicants declaring invalid postcodes are classified as 'Not assigned' and are not reported.

SIMD is only defined for applicants domiciled in Scotland, therefore any applicants domiciled outside of Scotland cannot be assigned to an SIMD quintile and so are not reported for this measure.

SIMD is only reported for providers in Scotland. Application and entry rates by SIMD are reported in the 2015 End of Cycle Report and the 2016 cycle January deadline application rate report.

### **Statistics reported in the tables**

#### **All placed applicants**

The number of applicants placed for entry into higher education at the provider through one of their choices, including any choices made through Extra, or via Adjustment, Clearing or RPA.

#### **All placed applicants per 10,000 population**

The number of total UK domiciled 18 year old placed applicants for entry into higher education at the provider divided by the number of UK 18 year olds in the population, multiplied by 10,000. This gives the number of 18 year olds, for every 10,000 in the population, that were placed at the provider through one of their choices, including any choices made through Extra, or via Adjustment, Clearing or RPA. It is an alternative way of expressing the entry rate to a provider. By referencing the underlying population this statistic shows how the number of placed applicants is changing in relation to the available pool of potential applicants and so gives the chance that somebody from the group will be placed at a provider.

This statistic is only reported for 18 year olds.

#### **Average offer rate**

The offer rate that you might expect if the predicted grades and subject choice of applicants were the only factors that influenced whether an applicant was made an offer by the provider. The average offer rate is calculated by dividing applicants according to their specific combination of grades (for A levels the best three predicted grades are used, for BTECs, International Baccalaureate and Scottish Highers and Advanced Highers, predicted grades along with any grades already achieved upon applying are used) and subject choice. For each combination the number of main scheme offers is divided by the number of main scheme applications, to give an overall offer rate. This is then multiplied by the number of applications made by the group for which the average offer rate is being calculated (for example POLAR3 quintile 1), to give an average number of offers for that group. These average number of offers are then added together across all combinations of predicted grade and subject and divided by the number of main scheme applications from the group to give the average offer rate.

The average offer rate does not attempt to control for any other factors that may play a part in the decision to make an offer, such as the subject of the qualifications studied, their relevance to a course, or the grade in each subject; higher numbers of A levels being studied; the exact profile of grades predicted; personal statements; teacher references; interviews; or any other criteria (such as work experience or portfolios) that may be part of the admissions decision.

This statistic is only reported for 18 year olds.



### Contribution of group to the average offer rate

The way in which the average offer rate is defined means that the pattern of application and offers of a group (for example POLAR3 quintile 1) will always contribute, in part, to the average offer rate for that group. When this contribution is large, the average offer rate will mainly reflect the patterns for the group, meaning that the value of the average offer rate will be similar to the offer rate, the percentage point difference statistic will be small, and any real difference between the offer rate and what might be expected given the predicted grades and subject choices of the applicants will be difficult to detect.

Values of the contribution of group to the average offer rate range between 0 and 1. The closer the value is to 1 the greater the contribution a group makes to its own average offer rate.

This statistic is only reported for 18 year olds.

### Placed June deadline applicants

An applicant who has been placed for entry into higher education at the provider through a June deadline application.

### Placed June deadline applicants per 10,000 population

The number of UK domiciled 18 year old placed June deadline applicants at the provider divided by the number of UK 18 year olds in the population, multiplied by 10,000. This gives the number of 18 year olds, for every 10,000 in the population, that were placed at the provider through one of their June deadline applications. It is an alternative way of expressing the entry rate to a provider, but for placed June deadline applicants only. By referencing the underlying population this statistic shows how the number of placed June deadline applicants is changing in relation to the available pool of potential 18 year old applicants and so gives the chance that somebody from the group will be placed at a provider through a June deadline application.

This statistic is only reported for 18 year olds.

### June deadline applications

An application (or choice) to a course in higher education to the provider that is made by the June 30 deadline. Each applicant can make up to five choices this way. The number of June deadline applications does not include choices made through the following routes: Clearing, Extra, Adjustment and RPAs. Applications made to October deadline courses received after the October deadline are not included in these statistics.

### June deadline applicants

The number of applicants that made at least one application to the provider by the June 30 deadline.

### June deadline applicants per 10,000 population

The number of UK domiciled 18 year old June deadline applicants to the provider divided by the number of UK 18 year olds in the population, multiplied by 10,000. This gives the number of 18 year olds, for every 10,000 in the population, who applied by the June 30 deadline. It is equivalent to the application rate. By referencing the underlying population this statistic shows how the number of June deadline applicants is changing in relation to the available pool of potential 18 year old applicants and so gives the chance that somebody from the group will apply to a provider by the June 30 deadline.

This statistic is only reported for 18 year olds.

### Offers

An offer is defined as a provider's decision in response to an application to offer a place to an applicant, often subject to the applicant satisfying academic and/or other criteria, via a June deadline application (i.e. does not cover choices made through the following routes: Clearing, Extra, Adjustment and RPAs).

### Offer rate

The number of offers made divided by the number of June deadline applications. This gives the proportion of all June deadline applications to the provider that received an offer.

### Percentage point difference between offer rate and average offer rate

The offer rate minus the average offer rate.

The percentage point difference can be compared to the expected range of statistical variation resulting from the calculation of the average offer rate using the Average Offer Rate Lookup Table. Where the value of the percentage point difference lies outside of this range, the percentage point difference may be considered to represent a real difference between the offer rate and the average offer rate.

### Other definitions

#### Age

This analysis uses country-specific age definitions that align with the cut off points for school and college cohorts within the different administrations of the UK. For England and Wales, ages are defined on the 31 August, for Northern Ireland on the 1 July and for Scotland on the 28 February the following year. Defining ages in this way matches the assignment of children to school cohorts. For applicants outside of the UK a cohort cut off of 31 August has been used.

#### Provider

A higher education provider - a university or college.

#### UK domiciled

Declared area of permanent residence within England, Northern Ireland, Scotland and Wales. Applicants from the Channel Islands and Isle of Man are not included.