

L27 Leeds Beckett University

Cycle years: 2010 - 2015

Cycle Reference Point: End of Cycle

Applicant coverage: UK domiciled

Reporting groups: Sex, POLAR3, ethnic group

Applicant statistics: June deadline applicants, placed June deadline applicants, all placed applicants, June deadline applicants per 10,000 population, placed June deadline applicants per 10,000 population, all placed applicants per 10,000 population

Application statistics: June deadline applications, offers, offer rate, average offer rate, percentage point difference between offer rate and average offer rate, contribution of group to the average offer rate

Non-disclosure controls: To avoid the disclosure of information about any individual the following measures are taken

- Applicants, placed applicants, applications and offers are rounded to the nearest 5.
- Applicants/placed applicants per 10,000 population figures are reported as 0 if the applicant/placed applicant figures are rounded to 0.
- All statistics related to the offer rate are not reported when the number of applications for a group is less than 10. The percentage point difference between the offer rate and the average offer rate is not reported when the number of applications for a group is less than 50.
- Offer rates are reported as 0% if there are fewer than 5 offers, and 100% if the number of offers is within 5 of the number of applications. When the offer rate is reported as 0% or 100%, it is reported in italics.

Contents:

18 year old applicants:	P.1
18 year old applications:	P.2
18 year old applicants by sex:	P.3
18 year old applications by sex:	P.4
18 year old applicants by POLAR3 quintile:	P.7
18 year old applications by POLAR3 quintile:	P.8
18 year old applicants by ethnic group:	P.11
18 year old applications by ethnic group:	P.12
Applicants (all ages):	P.15
Applications (all ages):	P.16
Applicants (all ages) by sex:	P.17
Applications (all ages) by sex:	P.18
Applicants (all ages) by POLAR3 quintile:	P.19
Applications (all ages) by POLAR3 quintile:	P.20
Applicants (all ages) by ethnic group:	P.21
Applications (all ages) by ethnic group:	P.22

P.1 18 year old applicants

Statistic	2010	2011	2012	2013	2014	2015
June deadline applicants	19,155	21,040	19,315	15,275	16,250	14,725
Placed June deadline applicants	3,165	3,750	2,435	2,585	2,935	3,340
All placed applicants	3,305	3,885	2,960	3,560	3,820	3,910
June deadline applicants per 10,000 population	242.6	273.2	249.7	200.7	215.8	192.2
Placed June deadline applicants per 10,000	40.1	48.7	31.5	34.0	39.0	43.6
All placed applicants per 10,000 population	41.8	50.5	38.3	46.8	50.7	51.1

P.2 18 year old applications

Statistic	2010	2011	2012	2013	2014	2015
June deadline applications	21,420	23,520	21,070	16,245	17,310	15,685
Offers	13,695	14,360	10,700	12,205	13,535	12,460
Offer rate	63.9%	61.1%	50.8%	75.1%	78.2%	79.4%

P.3 18 year old applicants by sex

Statistic	Sex	2010	2011	2012	2013	2014	2015
June deadline applicants	Men	8,645	9,515	8,255	6,685	7,170	6,320
	Women	10,505	11,530	11,065	8,585	9,085	8,400
Placed June deadline applicants	Men	1,435	1,845	1,080	1,265	1,430	1,605
	Women	1,730	1,905	1,350	1,320	1,505	1,735
All placed applicants	Men	1,495	1,900	1,345	1,745	1,845	1,845
	Women	1,805	1,990	1,615	1,815	1,975	2,065
June deadline applicants per 10,000 population	Men	215.3	241.8	208.1	171.3	185.2	161.1
	Women	270.9	306.1	293.5	231.7	248.1	224.8
Placed June deadline applicants per 10,000 population	Men	35.8	46.9	27.3	32.4	36.9	40.8
	Women	44.6	50.6	35.9	35.6	41.1	46.5
All placed applicants per 10,000 population	Men	37.3	48.3	33.9	44.7	47.7	47.0
	Women	46.6	52.8	42.9	49.0	54.0	55.3

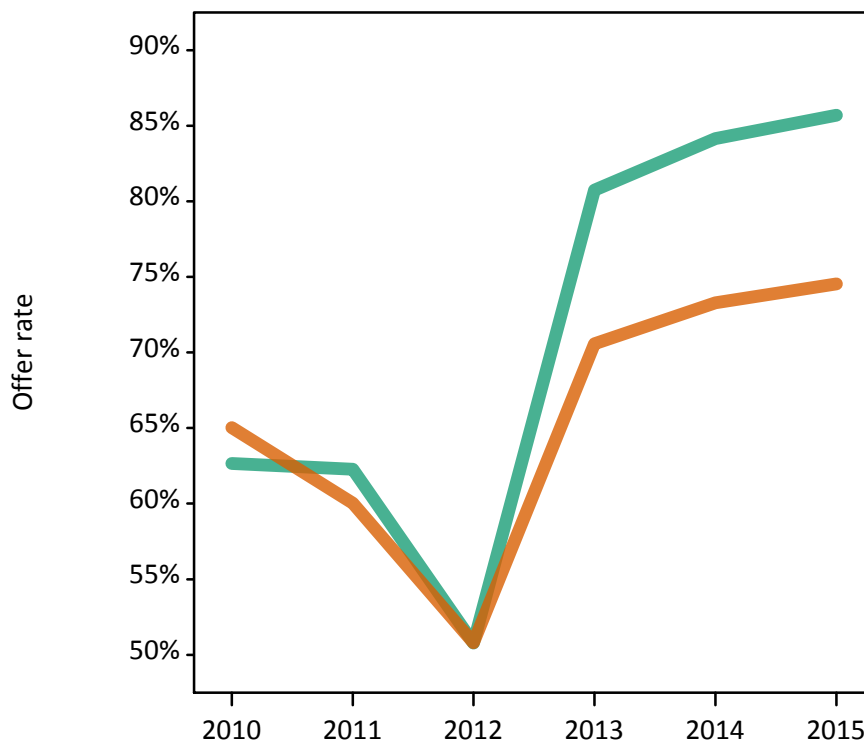
P.4 18 year old applications by sex

Statistic	Sex	2010	2011	2012	2013	2014	2015
June deadline applications	Men	9,965	10,915	9,245	7,285	7,830	6,890
	Women	11,455	12,605	11,825	8,960	9,480	8,795
Offers	Men	6,245	6,795	4,695	5,880	6,590	5,905
	Women	7,450	7,565	6,005	6,325	6,945	6,555
Offer rate	Men	62.6%	62.3%	50.8%	80.7%	84.2%	85.7%
	Women	65.0%	60.0%	50.8%	70.6%	73.3%	74.5%
Average offer rate	Men	64.2%	64.0%	53.3%	81.7%	84.7%	86.2%
	Women	63.7%	58.5%	48.8%	69.8%	72.8%	74.1%
Percentage point difference between offer rate and average offer rate	Men	-1.5	-1.7	-2.5	-0.9	-0.6	-0.5
	Women	1.3	1.5	2.0	0.8	0.5	0.4
Contribution of group to the average offer rate	Men	0.622	0.617	0.611	0.622	0.628	0.622
	Women	0.671	0.668	0.696	0.693	0.693	0.704

P.5 18 year old offer rate by sex

Note: The line for a group is not plotted when that group made fewer than 10 applications in any of the years from 2010-2015.

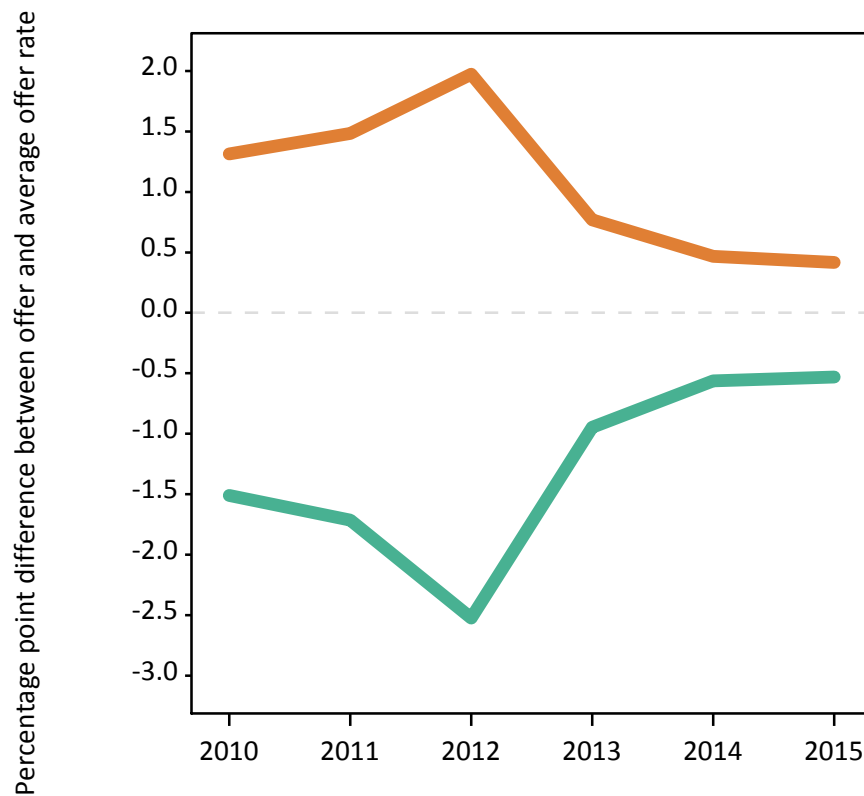
Men
Women



P.6 Percentage point difference between 18 year old offer rate and average offer rate by sex

Note: The line for a group is not plotted when that group made fewer than 50 applications in any of the years from 2010-2015.

Men
Women



P.7 18 year old applicants by POLAR3 quintile

Statistic	POLAR3 quintile	2010	2011	2012	2013	2014	2015
June deadline applicants	Quintile 1	2,855	3,000	2,975	2,360	2,740	2,520
	Quintile 2	3,510	3,865	3,660	2,995	3,135	2,965
	Quintile 3	3,905	4,190	3,910	3,125	3,395	3,020
	Quintile 4	4,065	4,545	3,985	3,165	3,345	2,990
	Quintile 5	4,790	5,400	4,750	3,615	3,605	3,210
Placed June deadline applicants	Quintile 1	450	465	330	390	495	575
	Quintile 2	535	625	445	480	550	670
	Quintile 3	635	730	485	520	575	655
	Quintile 4	650	805	520	555	625	660
	Quintile 5	900	1,115	645	630	690	775
All placed applicants	Quintile 1	475	490	400	520	620	660
	Quintile 2	555	650	545	670	705	780
	Quintile 3	655	755	585	705	740	790
	Quintile 4	675	835	640	755	800	770
	Quintile 5	935	1,150	785	905	955	910
June deadline applicants per 10,000 population	Quintile 1	192.7	208.6	208.8	169.2	196.8	180.0
	Quintile 2	228.1	257.2	244.0	203.1	214.2	199.6
	Quintile 3	245.6	272.3	253.3	204.8	225.7	196.6
	Quintile 4	255.3	290.3	251.3	202.4	217.1	191.0
	Quintile 5	282.5	326.2	282.8	218.6	221.1	191.7
Placed June deadline applicants per 10,000 population	Quintile 1	30.3	32.5	23.2	28.0	35.4	41.0
	Quintile 2	34.7	41.6	29.8	32.6	37.5	45.1
	Quintile 3	39.8	47.4	31.5	34.1	38.3	42.7
	Quintile 4	40.7	51.3	32.9	35.6	40.4	42.2
	Quintile 5	53.0	67.4	38.5	38.2	42.2	46.4
All placed applicants per 10,000 population	Quintile 1	32.2	34.0	28.1	37.4	44.4	47.0
	Quintile 2	36.1	43.2	36.5	45.3	48.2	52.6
	Quintile 3	41.3	49.0	37.8	46.2	49.1	51.5
	Quintile 4	42.3	53.2	40.5	48.2	51.9	49.1
	Quintile 5	55.3	69.5	46.7	54.8	58.4	54.4

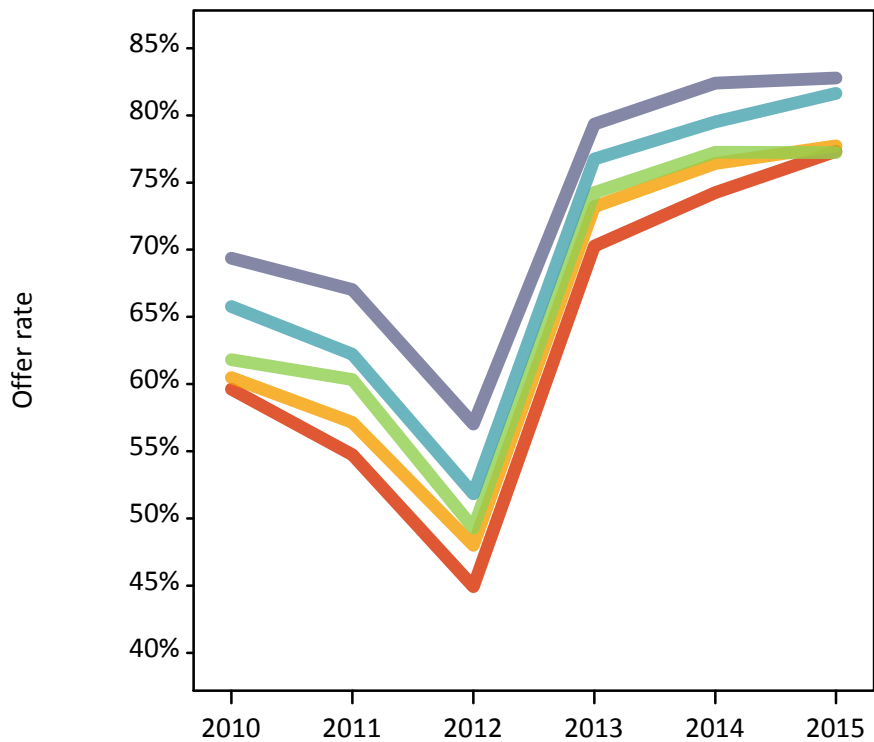
P.8 18 year old applications by POLAR3 quintile

Statistic	POLAR3 quintile	2010	2011	2012	2013	2014	2015
June deadline applications	Quintile 1	3,255	3,380	3,275	2,535	2,980	2,720
	Quintile 2	3,955	4,385	4,010	3,185	3,340	3,175
	Quintile 3	4,345	4,675	4,270	3,300	3,600	3,185
	Quintile 4	4,500	5,010	4,330	3,355	3,550	3,180
	Quintile 5	5,330	6,025	5,145	3,840	3,800	3,405
Offers	Quintile 1	1,940	1,850	1,470	1,785	2,210	2,105
	Quintile 2	2,390	2,505	1,925	2,335	2,555	2,465
	Quintile 3	2,685	2,820	2,105	2,450	2,785	2,460
	Quintile 4	2,960	3,115	2,245	2,575	2,825	2,595
	Quintile 5	3,695	4,040	2,935	3,050	3,135	2,820
Offer rate	Quintile 1	59.6%	54.7%	44.9%	70.3%	74.3%	77.3%
	Quintile 2	60.5%	57.1%	48.0%	73.2%	76.4%	77.7%
	Quintile 3	61.8%	60.3%	49.3%	74.2%	77.3%	77.2%
	Quintile 4	65.8%	62.2%	51.8%	76.7%	79.5%	81.6%
	Quintile 5	69.4%	67.0%	57.0%	79.4%	82.4%	82.8%
Average offer rate	Quintile 1	60.4%	55.9%	46.1%	71.9%	75.7%	77.6%
	Quintile 2	61.6%	58.4%	48.5%	73.2%	75.9%	78.7%
	Quintile 3	62.3%	60.2%	49.9%	74.2%	77.4%	77.0%
	Quintile 4	65.3%	61.9%	51.9%	76.6%	79.2%	81.3%
	Quintile 5	68.1%	65.8%	55.2%	78.6%	81.9%	82.2%
Percentage point difference between offer rate and average offer rate	Quintile 1	-0.8	-1.2	-1.2	-1.6	-1.4	-0.3
	Quintile 2	-1.1	-1.3	-0.5	0.0	0.5	-1.0
	Quintile 3	-0.5	0.1	-0.7	0.1	-0.2	0.2
	Quintile 4	0.5	0.3	-0.1	0.2	0.4	0.4
	Quintile 5	1.3	1.2	1.8	0.8	0.5	0.6
Contribution of group to the average offer rate	Quintile 1	0.199	0.190	0.206	0.214	0.229	0.226
	Quintile 2	0.223	0.221	0.229	0.241	0.237	0.251
	Quintile 3	0.239	0.231	0.239	0.246	0.243	0.246
	Quintile 4	0.247	0.244	0.242	0.251	0.245	0.248
	Quintile 5	0.308	0.310	0.304	0.306	0.295	0.292

P.9 18 year old offer rate by POLAR3 quintile

Note: The line for a group is not plotted when that group made fewer than 10 applications in any of the years from 2010-2015.

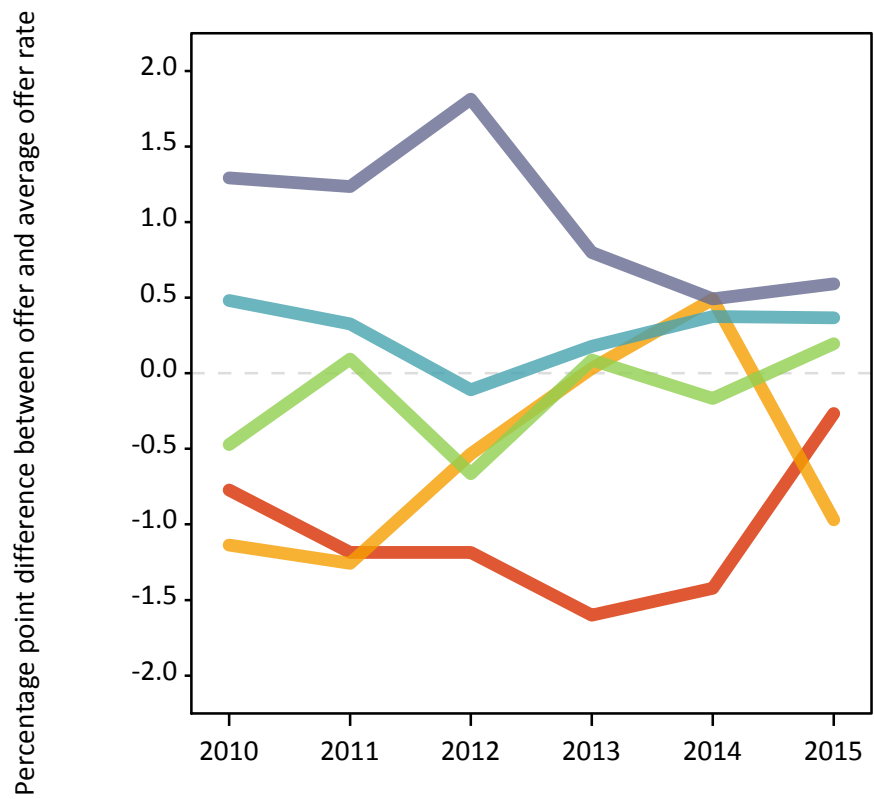
- Quintile 1
- Quintile 2
- Quintile 3
- Quintile 4
- Quintile 5



P.10 Percentage point difference between 18 year old offer rate and average offer rate by POLAR3 quintile

Note: The line for a group is not plotted when that group made fewer than 50 applications in any of the years from 2010-2015.

- Quintile 1
- Quintile 2
- Quintile 3
- Quintile 4
- Quintile 5



P.11 18 year old applicants by ethnic group

Statistic	Ethnic group	2010	2011	2012	2013	2014	2015
June deadline applicants	Asian	1,220	1,550	1,520	1,155	1,305	1,255
	Black	320	365	440	340	350	360
	Mixed	505	600	600	445	560	470
	White	17,000	18,440	16,640	13,235	13,945	12,535
	Other	60	45	70	65	70	65
Placed June deadline applicants	Asian	130	215	125	160	170	210
	Black	40	50	30	50	65	70
	Mixed	95	130	80	80	130	135
	White	2,880	3,345	2,195	2,280	2,555	2,900
	Other	10	5	5	10	10	10
All placed applicants	Asian	135	220	200	265	280	280
	Black	45	55	55	90	100	90
	Mixed	100	140	100	120	170	160
	White	3,000	3,460	2,600	3,055	3,255	3,360
	Other	10	5	10	20	15	15
June deadline applicants per 10,000 population	Asian	197.2	246.1	234.6	175.0	192.3	177.2
	Black	121.9	133.9	157.0	114.5	115.1	112.8
	Mixed	218.4	247.3	231.1	163.8	194.3	152.5
	White	253.5	284.8	257.7	210.3	226.0	201.2
	Other	75.3	56.8	81.4	72.8	74.1	69.6
Placed June deadline applicants per 10,000 population	Asian	21.0	34.0	19.0	24.0	24.9	29.7
	Black	15.7	18.3	11.0	17.5	21.8	22.6
	Mixed	41.4	53.7	30.3	29.2	44.5	43.8
	White	42.9	51.7	34.0	36.2	41.4	46.5
	Other	13.0	6.2	5.7	13.2	10.7	12.5
All placed applicants per 10,000 population	Asian	22.2	35.2	30.6	39.9	41.3	39.7
	Black	17.6	20.1	18.8	29.6	32.3	27.7
	Mixed	43.6	57.4	37.6	45.1	58.7	51.2
	White	44.7	53.4	40.3	48.6	52.7	53.9
	Other	13.0	8.6	9.0	22.1	14.0	14.5

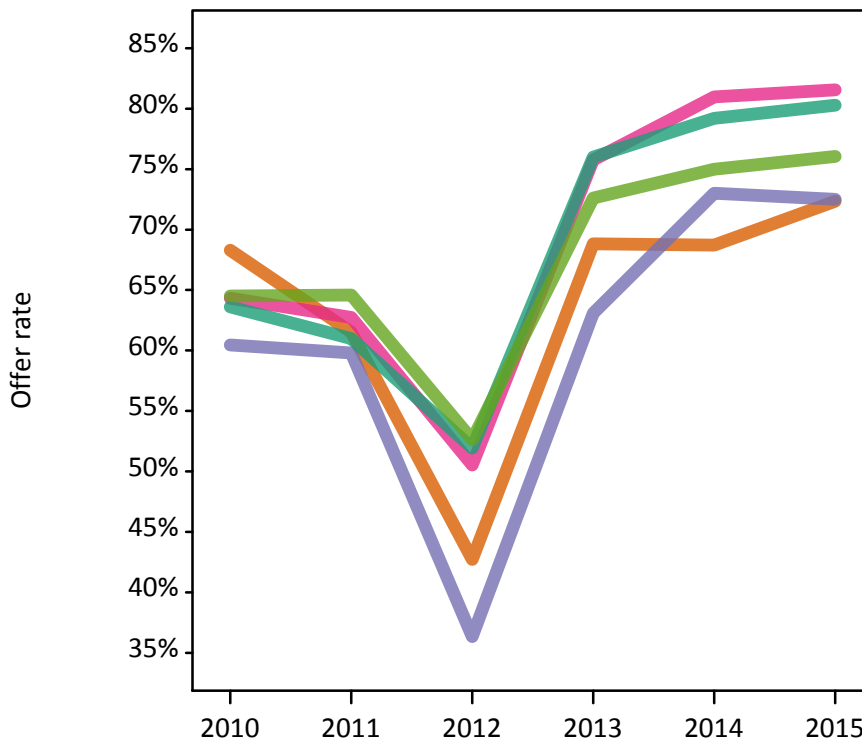
P.12 18 year old applications by ethnic group

Statistic	Ethnic group	2010	2011	2012	2013	2014	2015
June deadline applications	Asian	1,390	1,820	1,700	1,250	1,420	1,360
	Black	350	395	465	350	375	370
	Mixed	570	665	660	460	590	505
	White	18,990	20,545	18,130	14,075	14,820	13,335
	Other	60	50	75	75	75	70
Offers	Asian	950	1,120	725	860	975	985
	Black	210	235	170	220	275	270
	Mixed	365	415	335	345	475	410
	White	12,080	12,530	9,415	10,700	11,735	10,710
	Other	40	30	40	55	55	55
Offer rate	Asian	68.3%	61.5%	42.7%	68.8%	68.7%	72.3%
	Black	60.5%	59.8%	36.3%	63.1%	73.0%	72.5%
	Mixed	64.3%	62.7%	50.5%	75.8%	81.0%	81.5%
	White	63.6%	61.0%	51.9%	76.0%	79.2%	80.3%
	Other	64.5%	64.6%	52.6%	72.6%	75.0%	76.1%
Average offer rate	Asian	71.4%	65.3%	46.6%	73.3%	72.8%	76.2%
	Black	66.6%	61.6%	47.6%	73.1%	76.6%	78.1%
	Mixed	63.4%	62.4%	52.7%	76.8%	81.6%	81.7%
	White	63.3%	60.6%	51.2%	75.3%	78.6%	79.7%
	Other	70.7%	65.5%	54.3%	80.3%	82.4%	79.0%
Percentage point difference between offer rate and average offer rate	Asian	-3.1	-3.8	-3.8	-4.4	-4.1	-3.9
	Black	-6.1	-1.8	-11.2	-10.0	-3.6	-5.6
	Mixed	0.9	0.4	-2.1	-1.1	-0.7	-0.1
	White	0.3	0.4	0.8	0.7	0.6	0.6
	Other	-6.2	N/A	-1.7	-7.7	-7.4	-3.0
Contribution of group to the average offer rate	Asian	0.182	0.198	0.206	0.204	0.206	0.198
	Black	0.064	0.071	0.078	0.087	0.068	0.092
	Mixed	0.069	0.066	0.080	0.086	0.083	0.082
	White	0.899	0.888	0.877	0.884	0.872	0.867
	Other	0.047	0.046	0.048	0.063	0.069	0.081

P.13 18 year old offer rate by ethnic group

Note: The line for a group is not plotted when that group made fewer than 10 applications in any of the years from 2010-2015.

- Asian
- Black
- Mixed
- White
- Other



P.14 Percentage point difference between 18 year old offer rate and average offer rate by ethnic group

Note: The line for a group is not plotted when that group made fewer than 50 applications in any of the years from 2010-2015.

- Asian
- Black
- Mixed
- White
- Other



P.15 Applicants (all ages)

Statistic	2010	2011	2012	2013	2014	2015
June deadline applicants	35,135	39,070	34,005	28,075	28,990	25,600
Placed June deadline applicants	6,380	7,260	4,570	4,935	5,220	5,480
All placed applicants	6,715	7,555	5,810	6,855	6,995	6,715

P.16 Applications (all ages)

Statistic	2010	2011	2012	2013	2014	2015
June deadline applications	40,220	44,645	37,655	30,395	31,260	27,560
Offers	23,110	24,415	17,070	20,075	21,590	19,650
Offer rate	57.5%	54.7%	45.3%	66.1%	69.1%	71.3%

P.17 Applicants (all ages) by sex

Statistic	Sex	2010	2011	2012	2013	2014	2015
June deadline applicants	Men	17,010	18,790	15,635	13,045	13,570	11,540
	Women	18,125	20,280	18,370	15,030	15,425	14,060
Placed June deadline applicants	Men	3,150	3,890	2,295	2,615	2,705	2,800
	Women	3,230	3,365	2,275	2,315	2,515	2,680
All placed applicants	Men	3,330	4,025	2,985	3,685	3,675	3,430
	Women	3,385	3,535	2,825	3,170	3,320	3,285

P.18 Applications (all ages) by sex

Statistic	Sex	2010	2011	2012	2013	2014	2015
June deadline applications	Men	20,070	22,030	17,815	14,440	15,035	12,720
	Women	20,150	22,620	19,840	15,955	16,225	14,845
Offers	Men	11,440	12,490	8,275	10,320	11,245	9,955
	Women	11,670	11,930	8,800	9,760	10,345	9,695
Offer rate	Men	57.0%	56.7%	46.4%	71.5%	74.8%	78.3%
	Women	57.9%	52.7%	44.3%	61.2%	63.8%	65.3%

P.19 Applicants (all ages) by POLAR3 quintile

Statistic	POLAR3 quintile	2010	2011	2012	2013	2014	2015
June deadline applicants	Quintile 1	5,830	6,355	6,000	4,895	5,410	4,815
	Quintile 2	6,635	7,565	6,690	5,570	5,730	5,220
	Quintile 3	7,015	7,735	6,825	5,605	5,895	5,160
	Quintile 4	7,205	7,960	6,700	5,665	5,735	4,960
	Quintile 5	8,380	9,375	7,720	6,295	6,160	5,400
Placed June deadline applicants	Quintile 1	1,000	1,075	715	850	940	990
	Quintile 2	1,145	1,305	840	915	970	1,090
	Quintile 3	1,240	1,360	900	980	1,015	1,065
	Quintile 4	1,285	1,490	935	1,015	1,080	1,055
	Quintile 5	1,700	2,005	1,170	1,160	1,210	1,270
All placed applicants	Quintile 1	1,055	1,125	925	1,155	1,245	1,200
	Quintile 2	1,200	1,370	1,090	1,290	1,290	1,330
	Quintile 3	1,300	1,415	1,125	1,365	1,345	1,350
	Quintile 4	1,350	1,545	1,195	1,385	1,445	1,285
	Quintile 5	1,795	2,075	1,465	1,645	1,655	1,540

P.20 Applications (all ages) by POLAR3 quintile

Statistic	POLAR3 quintile	2010	2011	2012	2013	2014	2015
June deadline applications	Quintile 1	6,855	7,360	6,735	5,385	5,940	5,240
	Quintile 2	7,615	8,760	7,465	6,005	6,180	5,645
	Quintile 3	7,950	8,755	7,515	6,015	6,355	5,505
	Quintile 4	8,145	8,950	7,360	6,135	6,135	5,345
	Quintile 5	9,570	10,720	8,505	6,810	6,585	5,785
Offers	Quintile 1	3,595	3,525	2,630	3,195	3,725	3,465
	Quintile 2	4,185	4,475	3,145	3,760	4,095	3,910
	Quintile 3	4,420	4,730	3,270	4,005	4,365	3,870
	Quintile 4	4,850	5,100	3,515	4,250	4,405	3,995
	Quintile 5	6,020	6,540	4,470	4,840	4,955	4,380
Offer rate	Quintile 1	52.4%	47.9%	39.1%	59.3%	62.7%	66.1%
	Quintile 2	55.0%	51.1%	42.1%	62.6%	66.2%	69.3%
	Quintile 3	55.6%	54.0%	43.5%	66.5%	68.7%	70.3%
	Quintile 4	59.5%	57.0%	47.8%	69.3%	71.8%	74.8%
	Quintile 5	62.9%	61.0%	52.5%	71.1%	75.3%	75.7%

P.21 Applicants (all ages) by ethnic group

Statistic	Ethnic group	2010	2011	2012	2013	2014	2015
June deadline applicants	Asian	2,835	3,415	3,160	2,500	2,645	2,480
	Black	1,415	1,620	1,670	1,275	1,210	1,165
	Mixed	1,125	1,325	1,160	900	1,080	965
	White	29,480	32,410	27,675	23,095	23,785	20,695
	Other	145	180	230	190	195	185
Placed June deadline applicants	Asian	370	495	265	335	330	385
	Black	220	215	140	170	160	185
	Mixed	210	290	160	170	230	245
	White	5,515	6,210	3,965	4,195	4,450	4,600
	Other	30	30	20	40	30	40
All placed applicants	Asian	405	525	475	625	600	575
	Black	245	235	240	285	275	250
	Mixed	230	305	215	250	320	310
	White	5,745	6,430	4,790	5,585	5,715	5,490
	Other	35	35	40	65	50	55

P.22 Applications (all ages) by ethnic group

Statistic	Ethnic group	2010	2011	2012	2013	2014	2015
June deadline applications	Asian	3,355	4,060	3,575	2,740	2,885	2,710
	Black	1,615	1,865	1,850	1,385	1,325	1,250
	Mixed	1,295	1,505	1,290	970	1,170	1,050
	White	33,625	36,870	30,560	24,960	25,590	22,230
	Other	170	205	255	215	210	205
Offers	Asian	1,965	2,155	1,335	1,625	1,750	1,750
	Black	760	700	480	560	590	625
	Mixed	715	790	570	635	825	765
	White	19,465	20,585	14,540	17,045	18,260	16,295
	Other	95	110	95	140	125	130
Offer rate	Asian	58.6%	53.1%	37.3%	59.3%	60.6%	64.6%
	Black	47.0%	37.5%	26.1%	40.4%	44.7%	50.1%
	Mixed	55.3%	52.4%	44.1%	65.6%	70.8%	72.9%
	White	57.9%	55.8%	47.6%	68.3%	71.3%	73.3%
	Other	57.1%	54.1%	37.8%	64.4%	58.8%	63.9%

Technical Notes and Definitions

UCAS undergraduate scheme

Adjustment

Adjustment allows applicants who have met and exceeded the terms of their conditional firm offer to seek and find a place at another provider whilst keeping their place at their original firm choice provider.

Clearing

Clearing is a route for applicants that are not placed and holding no offers to find a place on courses with vacancies.

Cycle year

The UCAS application cycle which runs from September to October the following year. For example the 2015 cycle runs from September 2014 through to October 2015.

End of cycle

The point in the cycle to which the numbers in this report refer, and the point at which the cycle is closed such that no more applications or offers can be made, and no more applicants can be placed. Numbers reported at the end of cycle exclude information on a small number of applicants who cancelled during the cycle.

Extra

Applicants who are unsuccessful in obtaining an offer or decline all offers may be eligible to apply through Extra, where they can apply to one further course at a time. Extra operates from 25 February until early July. It provides applicants who are eligible the possibility of obtaining an offer before exam results are published and Clearing starts.

June 30 deadline

The deadline for main scheme applications. Applicants who apply after this date will go directly into Clearing.

Record of Prior Acceptance (RPA)

RPA is an acceptance route used when a provider informs UCAS of applicants it has accepted outside of the normal application process (e.g. individuals who have applied directly to the provider).

Reporting groups

Ethnic group

High level grouping of ethnic origin as declared by the applicant: 'White', 'Black', 'Asian', 'Mixed', 'Other', 'Unknown'. Applicants who declare themselves as 'Unknown' ethnic origin are not reported in these tables, but are included in the associated csv data file.

POLAR3 quintile

Developed by HEFCE, POLAR3 classifies small areas across the UK into five groups according to their level of young participation in Higher Education. Each of these groups represents around 20 per cent of young people and is ranked from Quintile 1 (areas with the lowest young participation rates, considered as the most disadvantaged) to Quintile 5 (highest young participation rates, considered most advantaged). POLAR3 is based on the participation rates of young people between 2005 and 2009 who entered Higher Education between 2005-06 and 2010-11, therefore is most suitable for applicants aged 19 and under. These groups are assigned using the postcode declared by the applicant at the time of their application. If a UK postcode is invalid, considered unsafe for measurement or there is no link to Census geography possible then the applicant is not assigned to a quintile. Applicants with no POLAR3 quintile are not reported.

Sex

Sex as declared by the applicant.

SIMD quintile

Scottish index of multiple deprivation (SIMD) for 2012 identifies small area concentrations of multiple deprivation across all of Scotland, providing a relative measure of deprivation amongst 6505 small areas (data zones) based on 7 socio-economic domains. These small areas are classified into five groups ranked from Quintile 1 (considered the most deprived) to Quintile 5 (considered least deprived), with equal populations in each quintile. Quintiles are assigned using the postcode declared by the applicant, applicants declaring invalid postcodes are classified as 'Not assigned' and are not reported.

SIMD is only defined for applicants domiciled in Scotland, therefore any applicants domiciled outside of Scotland cannot be assigned to an SIMD quintile and so are not reported for this measure.

SIMD is only reported for providers in Scotland. Application and entry rates by SIMD are reported in the 2015 End of Cycle Report and the 2016 cycle January deadline application rate report.

Statistics reported in the tables

All placed applicants

The number of applicants placed for entry into higher education at the provider through one of their choices, including any choices made through Extra, or via Adjustment, Clearing or RPA.

All placed applicants per 10,000 population

The number of total UK domiciled 18 year old placed applicants for entry into higher education at the provider divided by the number of UK 18 year olds in the population, multiplied by 10,000. This gives the number of 18 year olds, for every 10,000 in the population, that were placed at the provider through one of their choices, including any choices made through Extra, or via Adjustment, Clearing or RPA. It is an alternative way of expressing the entry rate to a provider. By referencing the underlying population this statistic shows how the number of placed applicants is changing in relation to the available pool of potential applicants and so gives the chance that somebody from the group will be placed at a provider.

This statistic is only reported for 18 year olds.

Average offer rate

The offer rate that you might expect if the predicted grades and subject choice of applicants were the only factors that influenced whether an applicant was made an offer by the provider. The average offer rate is calculated by dividing applicants according to their specific combination of grades (for A levels the best three predicted grades are used, for BTECs, International Baccalaureate and Scottish Highers and Advanced Highers, predicted grades along with any grades already achieved upon applying are used) and subject choice. For each combination the number of main scheme offers is divided by the number of main scheme applications, to give an overall offer rate. This is then multiplied by the number of applications made by the group for which the average offer rate is being calculated (for example POLAR3 quintile 1), to give an average number of offers for that group. These average number of offers are then added together across all combinations of predicted grade and subject and divided by the number of main scheme applications from the group to give the average offer rate.

The average offer rate does not attempt to control for any other factors that may play a part in the decision to make an offer, such as the subject of the qualifications studied, their relevance to a course, or the grade in each subject; higher numbers of A levels being studied; the exact profile of grades predicted; personal statements; teacher references; interviews; or any other criteria (such as work experience or portfolios) that may be part of the admissions decision.

This statistic is only reported for 18 year olds.

Contribution of group to the average offer rate

The way in which the average offer rate is defined means that the pattern of application and offers of a group (for example POLAR3 quintile 1) will always contribute, in part, to the average offer rate for that group. When this contribution is large, the average offer rate will mainly reflect the patterns for the group, meaning that the value of the average offer rate will be similar to the offer rate, the percentage point difference statistic will be small, and any real difference between the offer rate and what might be expected given the predicted grades and subject choices of the applicants will be difficult to detect.

Values of the contribution of group to the average offer rate range between 0 and 1. The closer the value is to 1 the greater the contribution a group makes to its own average offer rate.

This statistic is only reported for 18 year olds.

Placed June deadline applicants

An applicant who has been placed for entry into higher education at the provider through a June deadline application.

Placed June deadline applicants per 10,000 population

The number of UK domiciled 18 year old placed June deadline applicants at the provider divided by the number of UK 18 year olds in the population, multiplied by 10,000. This gives the number of 18 year olds, for every 10,000 in the population, that were placed at the provider through one of their June deadline applications. It is an alternative way of expressing the entry rate to a provider, but for placed June deadline applicants only. By referencing the underlying population this statistic shows how the number of placed June deadline applicants is changing in relation to the available pool of potential 18 year old applicants and so gives the chance that somebody from the group will be placed at a provider through a June deadline application.

This statistic is only reported for 18 year olds.

June deadline applications

An application (or choice) to a course in higher education to the provider that is made by the June 30 deadline. Each applicant can make up to five choices this way. The number of June deadline applications does not include choices made through the following routes: Clearing, Extra, Adjustment and RPAs. Applications made to October deadline courses received after the October deadline are not included in these statistics.

June deadline applicants

The number of applicants that made at least one application to the provider by the June 30 deadline.

June deadline applicants per 10,000 population

The number of UK domiciled 18 year old June deadline applicants to the provider divided by the number of UK 18 year olds in the population, multiplied by 10,000. This gives the number of 18 year olds, for every 10,000 in the population, who applied by the June 30 deadline. It is equivalent to the application rate. By referencing the underlying population this statistic shows how the number of June deadline applicants is changing in relation to the available pool of potential 18 year old applicants and so gives the chance that somebody from the group will apply to a provider by the June 30 deadline.

This statistic is only reported for 18 year olds.

Offers

An offer is defined as a provider's decision in response to an application to offer a place to an applicant, often subject to the applicant satisfying academic and/or other criteria, via a June deadline application (i.e. does not cover choices made through the following routes: Clearing, Extra, Adjustment and RPAs).

Offer rate

The number of offers made divided by the number of June deadline applications. This gives the proportion of all June deadline applications to the provider that received an offer.

Percentage point difference between offer rate and average offer rate

The offer rate minus the average offer rate.

The percentage point difference can be compared to the expected range of statistical variation resulting from the calculation of the average offer rate using the Average Offer Rate Lookup Table. Where the value of the percentage point difference lies outside of this range, the percentage point difference may be considered to represent a real difference between the offer rate and the average offer rate.

Other definitions

Age

This analysis uses country-specific age definitions that align with the cut off points for school and college cohorts within the different administrations of the UK. For England and Wales, ages are defined on the 31 August, for Northern Ireland on the 1 July and for Scotland on the 28 February the following year. Defining ages in this way matches the assignment of children to school cohorts. For applicants outside of the UK a cohort cut off of 31 August has been used.

Provider

A higher education provider - a university or college.

UK domiciled

Declared area of permanent residence within England, Northern Ireland, Scotland and Wales. Applicants from the Channel Islands and Isle of Man are not included.