

L14 Lancaster University

Cycle years: 2010 - 2015

Cycle Reference Point: End of Cycle

Applicant coverage: UK domiciled

Reporting groups: Sex, POLAR3, ethnic group

Applicant statistics: June deadline applicants, placed June deadline applicants, all placed applicants, June deadline applicants per 10,000 population, placed June deadline applicants per 10,000 population, all placed applicants per 10,000 population

Application statistics: June deadline applications, offers, offer rate, average offer rate, percentage point difference between offer rate and average offer rate, contribution of group to the average offer rate

Non-disclosure controls: To avoid the disclosure of information about any individual the following measures are taken

- Applicants, placed applicants, applications and offers are rounded to the nearest 5.
- Applicants/placed applicants per 10,000 population figures are reported as 0 if the applicant/placed applicant figures are rounded to 0.
- All statistics related to the offer rate are not reported when the number of applications for a group is less than 10. The percentage point difference between the offer rate and the average offer rate is not reported when the number of applications for a group is less than 50.
- Offer rates are reported as 0% if there are fewer than 5 offers, and 100% if the number of offers is within 5 of the number of applications. When the offer rate is reported as 0% or 100%, it is reported in italics.

Contents:

18 year old applicants:	P.1
18 year old applications:	P.2
18 year old applicants by sex:	P.3
18 year old applications by sex:	P.4
18 year old applicants by POLAR3 quintile:	P.7
18 year old applications by POLAR3 quintile:	P.8
18 year old applicants by ethnic group:	P.11
18 year old applications by ethnic group:	P.12
Applicants (all ages):	P.15
Applications (all ages):	P.16
Applicants (all ages) by sex:	P.17
Applications (all ages) by sex:	P.18
Applicants (all ages) by POLAR3 quintile:	P.19
Applications (all ages) by POLAR3 quintile:	P.20
Applicants (all ages) by ethnic group:	P.21
Applications (all ages) by ethnic group:	P.22

P.1 18 year old applicants

Statistic	2010	2011	2012	2013	2014	2015
June deadline applicants	7,570	9,540	9,930	8,485	7,835	9,440
Placed June deadline applicants	1,585	1,625	1,570	1,545	1,255	1,510
All placed applicants	1,890	1,670	1,695	1,785	1,580	1,715
June deadline applicants per 10,000 population	95.9	123.9	128.4	111.5	104.0	123.2
Placed June deadline applicants per 10,000	20.1	21.1	20.3	20.3	16.7	19.7
All placed applicants per 10,000 population	23.9	21.7	21.9	23.5	21.0	22.4

P.2 18 year old applications

Statistic	2010	2011	2012	2013	2014	2015
June deadline applications	7,935	9,965	10,270	8,760	8,080	9,740
Offers	7,300	9,075	9,335	7,975	7,200	8,355
Offer rate	92.0%	91.1%	90.9%	91.0%	89.1%	85.8%

P.3 18 year old applicants by sex

Statistic	Sex	2010	2011	2012	2013	2014	2015
June deadline applicants	Men	3,525	4,800	5,140	4,255	3,850	4,675
	Women	4,045	4,745	4,790	4,230	3,985	4,770
Placed June deadline applicants	Men	685	795	790	750	640	730
	Women	900	830	780	795	615	780
All placed applicants	Men	860	815	850	875	815	835
	Women	1,030	855	845	910	765	880
June deadline applicants per 10,000 population	Men	87.7	121.9	129.7	109.0	99.5	119.1
	Women	104.3	125.9	127.1	114.1	108.8	127.6
Placed June deadline applicants per 10,000 population	Men	17.1	20.2	20.0	19.2	16.5	18.7
	Women	23.2	22.0	20.7	21.5	16.8	20.8
All placed applicants per 10,000 population	Men	21.5	20.7	21.4	22.4	21.1	21.3
	Women	26.5	22.7	22.5	24.6	20.8	23.6

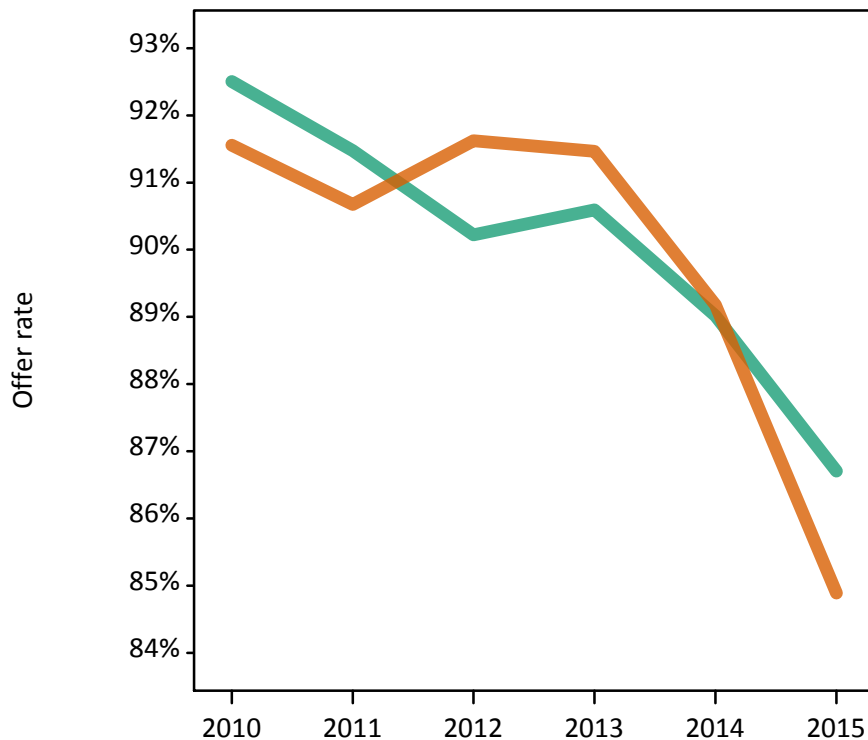
P.4 18 year old applications by sex

Statistic	Sex	2010	2011	2012	2013	2014	2015
June deadline applications	Men	3,710	5,010	5,320	4,400	3,985	4,835
	Women	4,230	4,955	4,955	4,360	4,095	4,905
Offers	Men	3,430	4,585	4,800	3,985	3,550	4,195
	Women	3,870	4,490	4,540	3,985	3,650	4,165
Offer rate	Men	92.5%	91.5%	90.2%	90.6%	89.0%	86.7%
	Women	91.6%	90.7%	91.6%	91.5%	89.2%	84.9%
Average offer rate	Men	92.5%	91.4%	90.4%	90.9%	89.3%	87.0%
	Women	91.6%	90.8%	91.4%	91.1%	88.9%	84.6%
Percentage point difference between offer rate and average offer rate	Men	0.0	0.1	-0.2	-0.3	-0.2	-0.3
	Women	-0.0	-0.1	0.2	0.3	0.2	0.3
Contribution of group to the average offer rate	Men	0.618	0.634	0.645	0.651	0.649	0.651
	Women	0.665	0.630	0.619	0.647	0.658	0.656

P.5 18 year old offer rate by sex

Note: The line for a group is not plotted when that group made fewer than 10 applications in any of the years from 2010-2015.

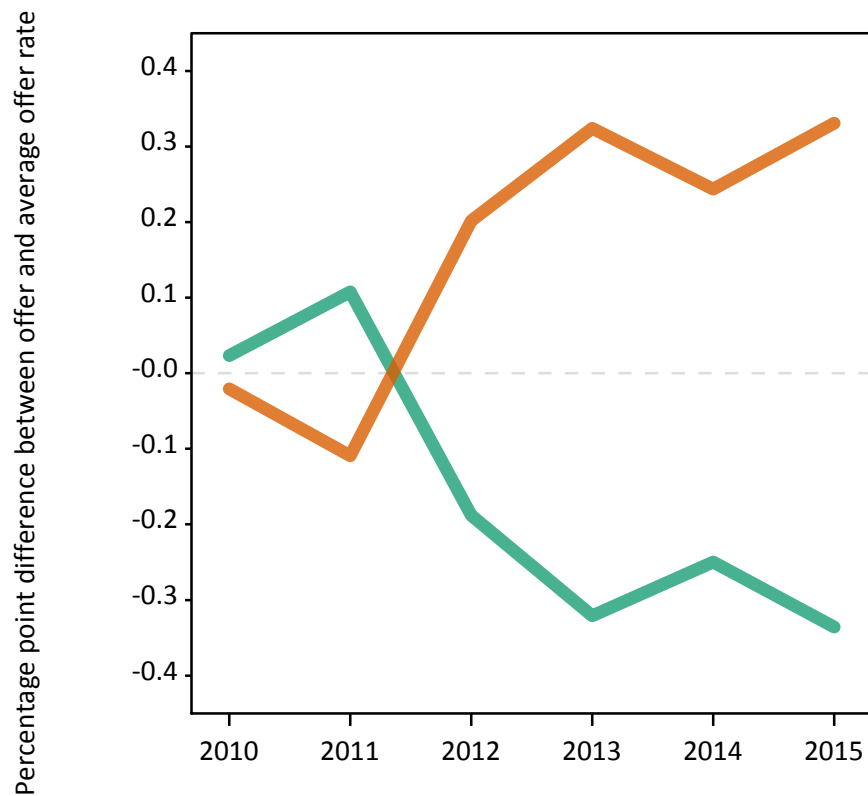
Men
Women



P.6 Percentage point difference between 18 year old offer rate and average offer rate by sex

Note: The line for a group is not plotted when that group made fewer than 50 applications in any of the years from 2010-2015.

Men
Women



P.7 18 year old applicants by POLAR3 quintile

Statistic	POLAR3 quintile	2010	2011	2012	2013	2014	2015
June deadline applicants	Quintile 1	710	860	875	780	730	940
	Quintile 2	1,010	1,270	1,350	1,175	1,140	1,355
	Quintile 3	1,535	1,755	1,870	1,600	1,470	1,805
	Quintile 4	1,955	2,370	2,455	2,055	1,875	2,400
	Quintile 5	2,340	3,265	3,370	2,865	2,600	2,915
Placed June deadline applicants	Quintile 1	150	145	155	145	120	140
	Quintile 2	185	215	210	210	185	195
	Quintile 3	330	315	310	315	240	310
	Quintile 4	440	415	400	390	340	410
	Quintile 5	480	530	495	490	370	450
All placed applicants	Quintile 1	175	150	155	165	135	160
	Quintile 2	215	220	225	235	235	230
	Quintile 3	385	320	345	360	305	335
	Quintile 4	520	430	430	435	420	460
	Quintile 5	595	545	540	590	485	525
June deadline applicants per 10,000 population	Quintile 1	48.0	59.7	61.4	56.1	52.5	67.1
	Quintile 2	65.7	84.4	89.9	79.7	78.0	91.2
	Quintile 3	96.7	114.0	121.1	104.8	97.6	117.7
	Quintile 4	122.8	151.4	154.7	131.5	121.6	153.3
	Quintile 5	138.1	197.3	200.5	173.3	159.4	174.1
Placed June deadline applicants per 10,000 population	Quintile 1	10.2	10.2	10.8	10.5	8.5	10.0
	Quintile 2	12.0	14.4	14.1	14.3	12.7	13.2
	Quintile 3	20.6	20.3	20.2	20.5	15.9	20.1
	Quintile 4	27.6	26.4	25.1	24.9	22.1	26.1
	Quintile 5	28.3	32.0	29.5	29.5	22.6	26.8
All placed applicants per 10,000 population	Quintile 1	11.7	10.4	11.0	11.8	9.8	11.3
	Quintile 2	13.9	14.8	14.9	15.9	15.9	15.4
	Quintile 3	24.3	20.8	22.3	23.7	20.1	21.9
	Quintile 4	32.7	27.4	27.0	27.8	27.1	29.3
	Quintile 5	35.0	32.9	32.3	35.6	29.7	31.4

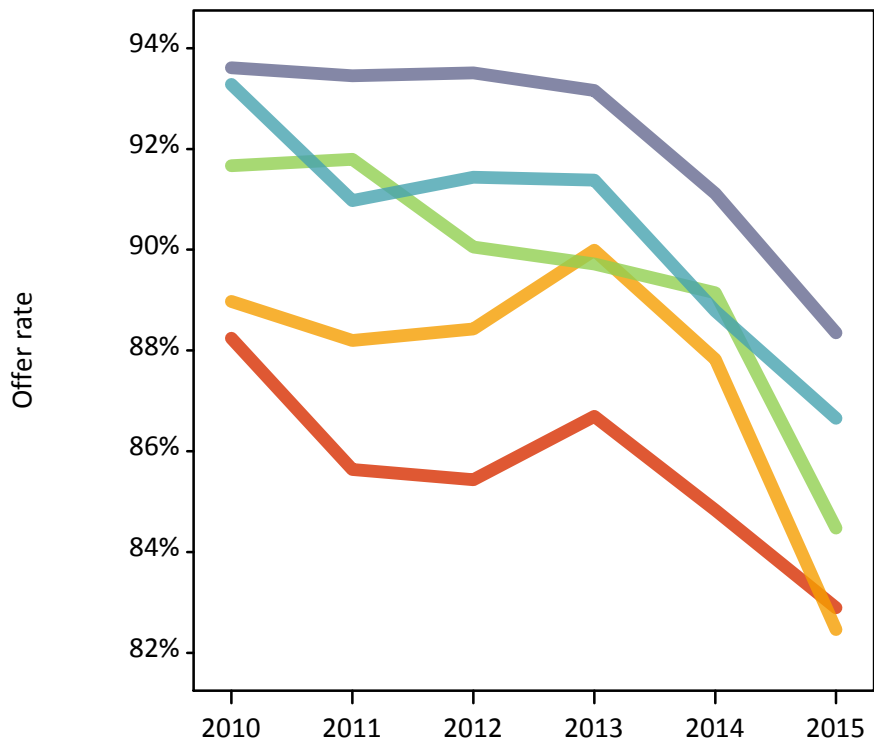
P.8 18 year old applications by POLAR3 quintile

Statistic	POLAR3 quintile	2010	2011	2012	2013	2014	2015
June deadline applications	Quintile 1	740	905	920	820	745	980
	Quintile 2	1,060	1,320	1,390	1,220	1,190	1,395
	Quintile 3	1,620	1,840	1,920	1,655	1,510	1,870
	Quintile 4	2,040	2,480	2,560	2,125	1,945	2,490
	Quintile 5	2,460	3,390	3,465	2,940	2,665	2,980
Offers	Quintile 1	655	775	785	710	630	815
	Quintile 2	945	1,165	1,230	1,095	1,045	1,150
	Quintile 3	1,485	1,690	1,730	1,485	1,345	1,580
	Quintile 4	1,905	2,260	2,340	1,940	1,725	2,155
	Quintile 5	2,300	3,170	3,240	2,735	2,430	2,630
Offer rate	Quintile 1	88.2%	85.6%	85.4%	86.7%	84.8%	82.9%
	Quintile 2	89.0%	88.2%	88.4%	90.0%	87.8%	82.5%
	Quintile 3	91.7%	91.8%	90.1%	89.7%	89.1%	84.5%
	Quintile 4	93.3%	91.0%	91.4%	91.4%	88.8%	86.7%
	Quintile 5	93.6%	93.5%	93.5%	93.2%	91.1%	88.4%
Average offer rate	Quintile 1	89.2%	86.8%	87.0%	88.2%	86.0%	84.0%
	Quintile 2	90.9%	88.5%	88.8%	89.4%	88.4%	82.9%
	Quintile 3	91.5%	91.5%	90.0%	90.3%	89.4%	84.5%
	Quintile 4	92.3%	91.2%	91.2%	91.0%	88.9%	86.7%
	Quintile 5	93.5%	93.0%	93.1%	93.0%	90.3%	87.8%
Percentage point difference between offer rate and average offer rate	Quintile 1	-1.0	-1.2	-1.5	-1.5	-1.2	-1.1
	Quintile 2	-1.9	-0.3	-0.4	0.6	-0.6	-0.4
	Quintile 3	0.2	0.3	0.1	-0.6	-0.2	0.0
	Quintile 4	1.0	-0.2	0.2	0.4	-0.1	-0.0
	Quintile 5	0.1	0.4	0.4	0.2	0.8	0.6
Contribution of group to the average offer rate	Quintile 1	0.207	0.207	0.196	0.200	0.203	0.208
	Quintile 2	0.233	0.224	0.217	0.226	0.237	0.228
	Quintile 3	0.303	0.260	0.264	0.267	0.270	0.266
	Quintile 4	0.341	0.319	0.316	0.315	0.316	0.323
	Quintile 5	0.396	0.413	0.407	0.409	0.411	0.385

P.9 18 year old offer rate by POLAR3 quintile

Note: The line for a group is not plotted when that group made fewer than 10 applications in any of the years from 2010-2015.

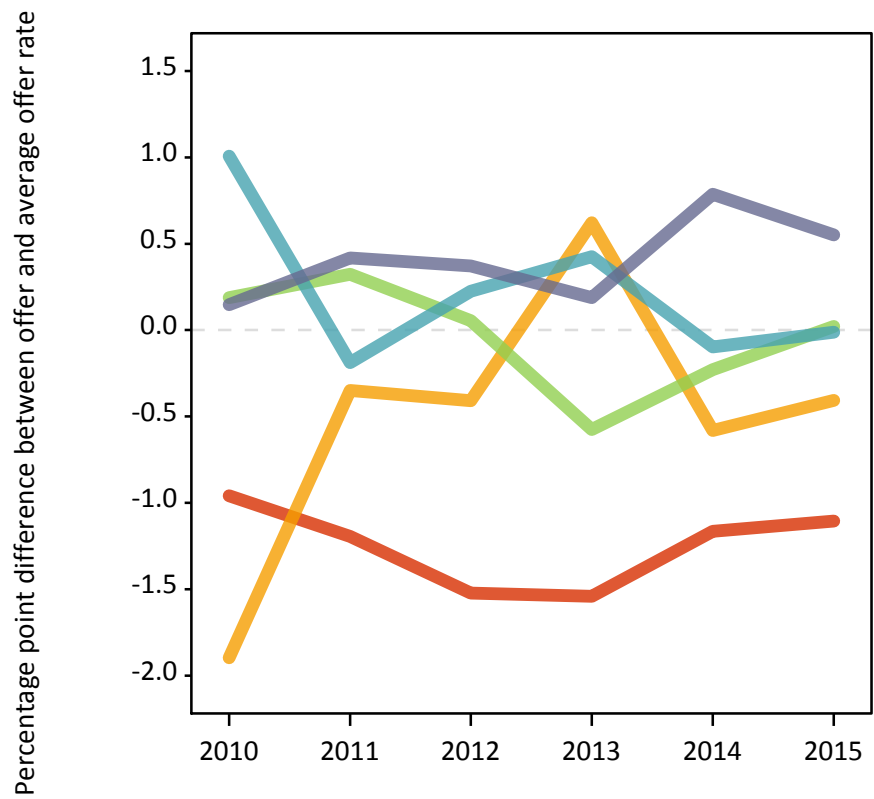
- Quintile 1
- Quintile 2
- Quintile 3
- Quintile 4
- Quintile 5



P.10 Percentage point difference between 18 year old offer rate and average offer rate by POLAR3 quintile

Note: The line for a group is not plotted when that group made fewer than 50 applications in any of the years from 2010-2015.

- Quintile 1
- Quintile 2
- Quintile 3
- Quintile 4
- Quintile 5



P.11 18 year old applicants by ethnic group

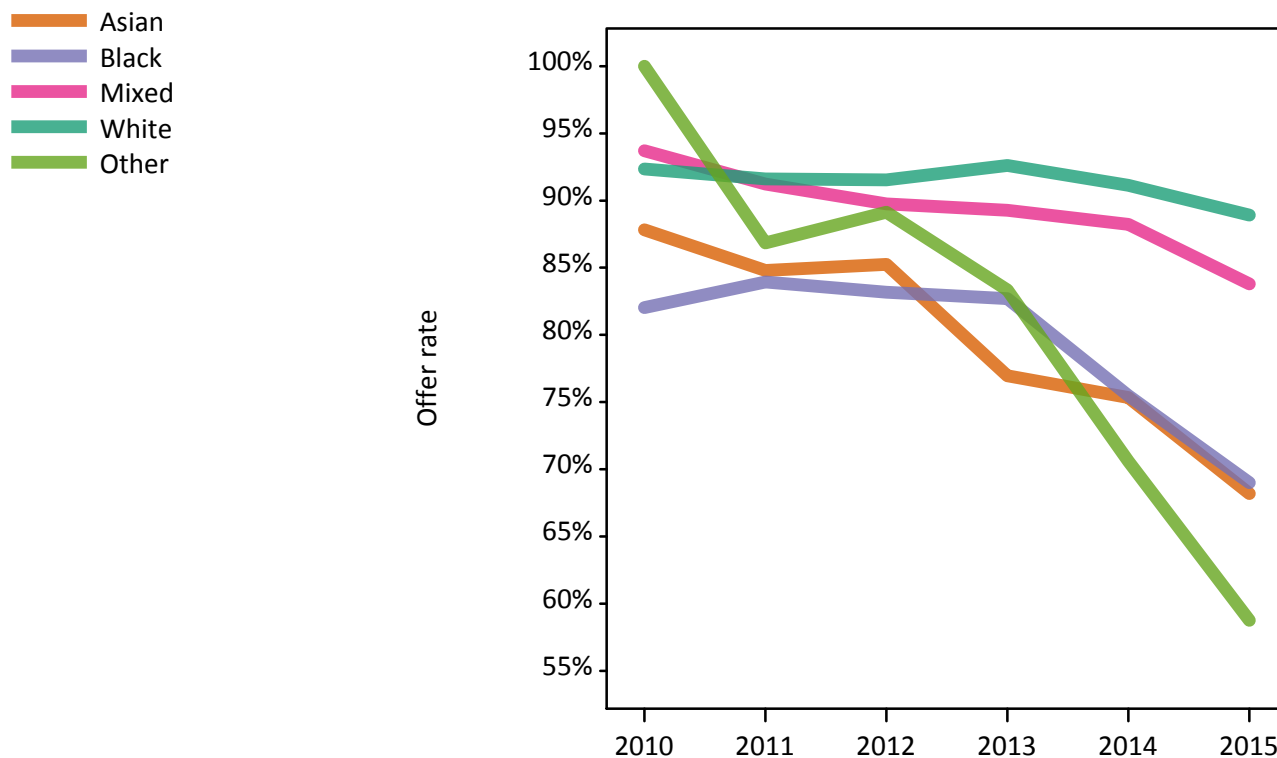
Statistic	Ethnic group	2010	2011	2012	2013	2014	2015
June deadline applicants	Asian	365	525	665	625	650	945
	Black	90	190	205	235	260	295
	Mixed	155	240	285	260	235	320
	White	6,895	8,490	8,690	7,280	6,610	7,740
	Other	20	40	45	35	50	80
Placed June deadline applicants	Asian	50	50	75	60	70	90
	Black	10	15	20	35	25	25
	Mixed	30	40	35	35	45	50
	White	1,485	1,500	1,430	1,410	1,110	1,335
	Other	0	5	5	5	5	5
All placed applicants	Asian	85	55	80	85	110	115
	Black	15	20	30	45	45	40
	Mixed	35	40	40	40	60	65
	White	1,735	1,540	1,535	1,605	1,350	1,480
	Other	5	5	5	5	5	10
June deadline applicants per 10,000 population	Asian	59.2	83.3	102.5	94.5	95.6	133.6
	Black	34.0	70.2	73.2	79.8	85.8	93.0
	Mixed	66.9	99.5	109.4	95.4	81.3	103.5
	White	102.8	131.1	134.6	115.7	107.2	124.2
	Other	24.7	46.9	52.0	39.7	53.7	82.0
Placed June deadline applicants per 10,000 population	Asian	7.8	8.3	11.6	8.8	10.0	12.6
	Black	4.2	5.9	7.8	11.5	8.9	8.2
	Mixed	12.5	16.5	13.1	12.2	15.3	15.6
	White	22.1	23.2	22.1	22.4	18.0	21.4
	Other	0.0	3.7	6.8	4.4	5.4	7.3
All placed applicants per 10,000 population	Asian	13.4	9.0	12.7	12.7	16.5	16.0
	Black	6.5	6.6	10.7	14.8	14.8	12.3
	Mixed	16.0	16.9	15.0	15.2	20.9	20.4
	White	25.9	23.8	23.8	25.5	21.9	23.8
	Other	9.1	3.7	7.9	4.4	6.4	11.4

P.12 18 year old applications by ethnic group

Statistic	Ethnic group	2010	2011	2012	2013	2014	2015
June deadline applications	Asian	380	535	680	630	665	960
	Black	90	195	210	235	260	300
	Mixed	160	250	295	260	240	320
	White	7,245	8,890	9,005	7,545	6,830	8,015
	Other	20	40	45	35	50	80
Offers	Asian	330	450	580	485	500	655
	Black	75	160	175	195	195	205
	Mixed	150	230	265	235	210	270
	White	6,690	8,145	8,245	6,985	6,225	7,130
	Other	15	35	40	30	35	45
Offer rate	Asian	87.8%	84.8%	85.3%	76.9%	75.3%	68.2%
	Black	82.0%	83.9%	83.2%	82.7%	75.5%	69.0%
	Mixed	93.7%	91.2%	89.8%	89.3%	88.2%	83.8%
	White	92.4%	91.6%	91.6%	92.6%	91.1%	88.9%
	Other	100.0%	86.8%	89.1%	83.3%	70.6%	58.8%
Average offer rate	Asian	87.0%	87.9%	86.3%	79.7%	77.2%	70.6%
	Black	84.3%	86.4%	85.8%	84.2%	77.7%	71.5%
	Mixed	92.4%	90.0%	89.8%	89.9%	88.5%	83.8%
	White	92.4%	91.4%	91.4%	92.3%	90.8%	88.5%
	Other	92.9%	90.0%	90.1%	86.2%	73.1%	64.7%
Percentage point difference between offer rate and average offer rate	Asian	0.8	-3.1	-1.1	-2.7	-1.8	-2.4
	Black	-2.2	-2.5	-2.6	-1.5	-2.2	-2.5
	Mixed	1.3	1.2	-0.1	-0.6	-0.3	0.0
	White	-0.0	0.2	0.2	0.3	0.3	0.4
	Other	N/A	N/A	N/A	N/A	-2.5	-6.0
Contribution of group to the average offer rate	Asian	0.207	0.192	0.198	0.231	0.242	0.241
	Black	0.175	0.150	0.156	0.156	0.215	0.159
	Mixed	0.128	0.134	0.117	0.144	0.137	0.135
	White	0.928	0.908	0.895	0.886	0.877	0.857
	Other	0.179	0.109	0.105	0.102	0.197	0.114

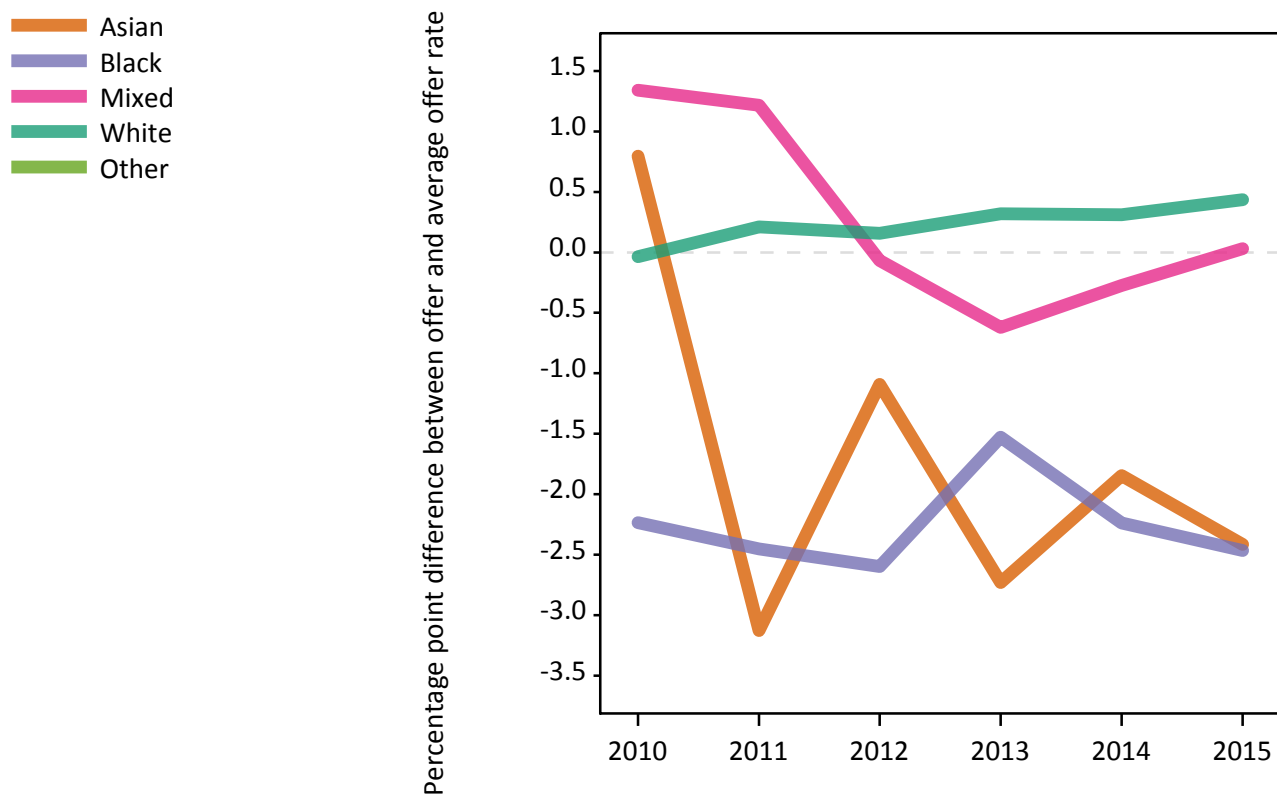
P.13 18 year old offer rate by ethnic group

Note: The line for a group is not plotted when that group made fewer than 10 applications in any of the years from 2010-2015.



P.14 Percentage point difference between 18 year old offer rate and average offer rate by ethnic group

Note: The line for a group is not plotted when that group made fewer than 50 applications in any of the years from 2010-2015.



P.15 Applicants (all ages)

Statistic	2010	2011	2012	2013	2014	2015
June deadline applicants	10,015	12,620	12,405	11,160	10,870	13,085
Placed June deadline applicants	2,110	2,155	1,945	2,020	1,710	2,020
All placed applicants	2,500	2,220	2,110	2,340	2,120	2,305

P.16 Applications (all ages)

Statistic	2010	2011	2012	2013	2014	2015
June deadline applications	10,595	13,210	12,875	11,605	11,275	13,545
Offers	9,055	11,210	11,035	9,760	9,190	10,630
Offer rate	85.5%	84.9%	85.7%	84.1%	81.5%	78.5%

P.17 Applicants (all ages) by sex

Statistic	Sex	2010	2011	2012	2013	2014	2015
June deadline applicants	Men	4,720	6,365	6,550	5,635	5,450	6,665
	Women	5,290	6,250	5,855	5,525	5,425	6,420
Placed June deadline applicants	Men	955	1,075	1,010	995	875	1,030
	Women	1,150	1,080	930	1,025	830	990
All placed applicants	Men	1,175	1,105	1,090	1,170	1,105	1,175
	Women	1,320	1,115	1,020	1,170	1,015	1,130

P.18 Applications (all ages) by sex

Statistic	Sex	2010	2011	2012	2013	2014	2015
June deadline applications	Men	5,030	6,675	6,800	5,875	5,665	6,920
	Women	5,560	6,535	6,075	5,730	5,605	6,620
Offers	Men	4,340	5,730	5,785	4,910	4,595	5,540
	Women	4,720	5,480	5,250	4,850	4,590	5,090
Offer rate	Men	86.2%	85.9%	85.1%	83.6%	81.1%	80.0%
	Women	84.8%	83.8%	86.4%	84.7%	81.9%	76.9%

P.19 Applicants (all ages) by POLAR3 quintile

Statistic	POLAR3 quintile	2010	2011	2012	2013	2014	2015
June deadline applicants	Quintile 1	1,070	1,260	1,200	1,110	1,160	1,395
	Quintile 2	1,385	1,715	1,730	1,630	1,625	1,965
	Quintile 3	2,000	2,325	2,310	2,125	2,080	2,490
	Quintile 4	2,545	3,110	3,025	2,660	2,590	3,235
	Quintile 5	2,990	4,165	4,110	3,620	3,390	3,960
Placed June deadline applicants	Quintile 1	205	200	200	205	180	205
	Quintile 2	250	280	260	290	255	275
	Quintile 3	430	405	380	390	335	415
	Quintile 4	590	565	495	480	460	520
	Quintile 5	625	700	605	655	480	595
All placed applicants	Quintile 1	235	210	210	230	210	230
	Quintile 2	290	285	280	330	310	315
	Quintile 3	505	415	420	455	420	465
	Quintile 4	690	585	535	555	560	590
	Quintile 5	770	720	670	775	620	690

P.20 Applications (all ages) by POLAR3 quintile

Statistic	POLAR3 quintile	2010	2011	2012	2013	2014	2015
June deadline applications	Quintile 1	1,145	1,330	1,270	1,180	1,195	1,460
	Quintile 2	1,460	1,790	1,810	1,710	1,710	2,035
	Quintile 3	2,130	2,435	2,375	2,200	2,140	2,575
	Quintile 4	2,675	3,270	3,155	2,755	2,700	3,365
	Quintile 5	3,160	4,345	4,240	3,745	3,495	4,065
Offers	Quintile 1	875	990	985	905	885	1,080
	Quintile 2	1,185	1,440	1,475	1,405	1,350	1,505
	Quintile 3	1,835	2,065	2,010	1,795	1,720	2,015
	Quintile 4	2,340	2,815	2,760	2,355	2,240	2,670
	Quintile 5	2,800	3,875	3,785	3,290	2,975	3,320
Offer rate	Quintile 1	76.6%	74.4%	77.4%	76.8%	74.0%	74.0%
	Quintile 2	81.2%	80.4%	81.7%	82.2%	78.8%	74.0%
	Quintile 3	86.2%	84.8%	84.7%	81.6%	80.3%	78.2%
	Quintile 4	87.5%	86.1%	87.4%	85.3%	82.9%	79.3%
	Quintile 5	88.7%	89.2%	89.3%	87.9%	85.1%	81.7%

P.21 Applicants (all ages) by ethnic group

Statistic	Ethnic group	2010	2011	2012	2013	2014	2015
June deadline applicants	Asian	555	790	955	1,020	1,120	1,605
	Black	225	375	360	425	470	575
	Mixed	220	350	395	365	365	475
	White	8,890	10,950	10,540	9,175	8,760	10,175
	Other	35	60	80	90	95	145
Placed June deadline applicants	Asian	65	90	115	85	100	125
	Black	25	30	35	55	45	40
	Mixed	40	60	50	50	65	65
	White	1,955	1,950	1,720	1,815	1,490	1,765
	Other	5	5	10	10	10	10
All placed applicants	Asian	115	95	130	130	165	160
	Black	40	35	45	70	70	60
	Mixed	50	60	60	60	85	85
	White	2,265	2,000	1,850	2,055	1,790	1,965
	Other	10	5	10	10	10	15

P.22 Applications (all ages) by ethnic group

Statistic	Ethnic group	2010	2011	2012	2013	2014	2015
June deadline applications	Asian	575	800	975	1,040	1,145	1,635
	Black	230	375	365	430	475	585
	Mixed	225	370	405	370	380	480
	White	9,440	11,515	10,970	9,590	9,115	10,585
	Other	35	60	80	90	95	145
Offers	Asian	450	635	770	685	735	955
	Black	135	265	250	295	290	335
	Mixed	200	305	330	300	300	350
	White	8,180	9,885	9,560	8,355	7,765	8,825
	Other	30	50	65	60	60	85
Offer rate	Asian	78.4%	79.0%	79.1%	66.1%	63.9%	58.5%
	Black	58.5%	69.8%	68.5%	69.4%	61.4%	57.6%
	Mixed	87.2%	83.4%	81.5%	80.9%	78.9%	72.7%
	White	86.6%	85.9%	87.1%	87.1%	85.2%	83.3%
	Other	77.8%	82.0%	81.5%	65.2%	63.5%	59.7%

Technical Notes and Definitions

UCAS undergraduate scheme

Adjustment

Adjustment allows applicants who have met and exceeded the terms of their conditional firm offer to seek and find a place at another provider whilst keeping their place at their original firm choice provider.

Clearing

Clearing is a route for applicants that are not placed and holding no offers to find a place on courses with vacancies.

Cycle year

The UCAS application cycle which runs from September to October the following year. For example the 2015 cycle runs from September 2014 through to October 2015.

End of cycle

The point in the cycle to which the numbers in this report refer, and the point at which the cycle is closed such that no more applications or offers can be made, and no more applicants can be placed. Numbers reported at the end of cycle exclude information on a small number of applicants who cancelled during the cycle.

Extra

Applicants who are unsuccessful in obtaining an offer or decline all offers may be eligible to apply through Extra, where they can apply to one further course at a time. Extra operates from 25 February until early July. It provides applicants who are eligible the possibility of obtaining an offer before exam results are published and Clearing starts.

June 30 deadline

The deadline for main scheme applications. Applicants who apply after this date will go directly into Clearing.

Record of Prior Acceptance (RPA)

RPA is an acceptance route used when a provider informs UCAS of applicants it has accepted outside of the normal application process (e.g. individuals who have applied directly to the provider).

Reporting groups

Ethnic group

High level grouping of ethnic origin as declared by the applicant: 'White', 'Black', 'Asian', 'Mixed', 'Other', 'Unknown'. Applicants who declare themselves as 'Unknown' ethnic origin are not reported in these tables, but are included in the associated csv data file.

POLAR3 quintile

Developed by HEFCE, POLAR3 classifies small areas across the UK into five groups according to their level of young participation in Higher Education. Each of these groups represents around 20 per cent of young people and is ranked from Quintile 1 (areas with the lowest young participation rates, considered as the most disadvantaged) to Quintile 5 (highest young participation rates, considered most advantaged). POLAR3 is based on the participation rates of young people between 2005 and 2009 who entered Higher Education between 2005-06 and 2010-11, therefore is most suitable for applicants aged 19 and under. These groups are assigned using the postcode declared by the applicant at the time of their application. If a UK postcode is invalid, considered unsafe for measurement or there is no link to Census geography possible then the applicant is not assigned to a quintile. Applicants with no POLAR3 quintile are not reported.

Sex

Sex as declared by the applicant.

SIMD quintile

Scottish index of multiple deprivation (SIMD) for 2012 identifies small area concentrations of multiple deprivation across all of Scotland, providing a relative measure of deprivation amongst 6505 small areas (data zones) based on 7 socio-economic domains. These small areas are classified into five groups ranked from Quintile 1 (considered the most deprived) to Quintile 5 (considered least deprived), with equal populations in each quintile. Quintiles are assigned using the postcode declared by the applicant, applicants declaring invalid postcodes are classified as 'Not assigned' and are not reported.

SIMD is only defined for applicants domiciled in Scotland, therefore any applicants domiciled outside of Scotland cannot be assigned to an SIMD quintile and so are not reported for this measure.

SIMD is only reported for providers in Scotland. Application and entry rates by SIMD are reported in the 2015 End of Cycle Report and the 2016 cycle January deadline application rate report.

Statistics reported in the tables

All placed applicants

The number of applicants placed for entry into higher education at the provider through one of their choices, including any choices made through Extra, or via Adjustment, Clearing or RPA.

All placed applicants per 10,000 population

The number of total UK domiciled 18 year old placed applicants for entry into higher education at the provider divided by the number of UK 18 year olds in the population, multiplied by 10,000. This gives the number of 18 year olds, for every 10,000 in the population, that were placed at the provider through one of their choices, including any choices made through Extra, or via Adjustment, Clearing or RPA. It is an alternative way of expressing the entry rate to a provider. By referencing the underlying population this statistic shows how the number of placed applicants is changing in relation to the available pool of potential applicants and so gives the chance that somebody from the group will be placed at a provider.

This statistic is only reported for 18 year olds.

Average offer rate

The offer rate that you might expect if the predicted grades and subject choice of applicants were the only factors that influenced whether an applicant was made an offer by the provider. The average offer rate is calculated by dividing applicants according to their specific combination of grades (for A levels the best three predicted grades are used, for BTECs, International Baccalaureate and Scottish Highers and Advanced Highers, predicted grades along with any grades already achieved upon applying are used) and subject choice. For each combination the number of main scheme offers is divided by the number of main scheme applications, to give an overall offer rate. This is then multiplied by the number of applications made by the group for which the average offer rate is being calculated (for example POLAR3 quintile 1), to give an average number of offers for that group. These average number of offers are then added together across all combinations of predicted grade and subject and divided by the number of main scheme applications from the group to give the average offer rate.

The average offer rate does not attempt to control for any other factors that may play a part in the decision to make an offer, such as the subject of the qualifications studied, their relevance to a course, or the grade in each subject; higher numbers of A levels being studied; the exact profile of grades predicted; personal statements; teacher references; interviews; or any other criteria (such as work experience or portfolios) that may be part of the admissions decision.

This statistic is only reported for 18 year olds.

Contribution of group to the average offer rate

The way in which the average offer rate is defined means that the pattern of application and offers of a group (for example POLAR3 quintile 1) will always contribute, in part, to the average offer rate for that group. When this contribution is large, the average offer rate will mainly reflect the patterns for the group, meaning that the value of the average offer rate will be similar to the offer rate, the percentage point difference statistic will be small, and any real difference between the offer rate and what might be expected given the predicted grades and subject choices of the applicants will be difficult to detect.

Values of the contribution of group to the average offer rate range between 0 and 1. The closer the value is to 1 the greater the contribution a group makes to its own average offer rate.

This statistic is only reported for 18 year olds.

Placed June deadline applicants

An applicant who has been placed for entry into higher education at the provider through a June deadline application.

Placed June deadline applicants per 10,000 population

The number of UK domiciled 18 year old placed June deadline applicants at the provider divided by the number of UK 18 year olds in the population, multiplied by 10,000. This gives the number of 18 year olds, for every 10,000 in the population, that were placed at the provider through one of their June deadline applications. It is an alternative way of expressing the entry rate to a provider, but for placed June deadline applicants only. By referencing the underlying population this statistic shows how the number of placed June deadline applicants is changing in relation to the available pool of potential 18 year old applicants and so gives the chance that somebody from the group will be placed at a provider through a June deadline application.

This statistic is only reported for 18 year olds.

June deadline applications

An application (or choice) to a course in higher education to the provider that is made by the June 30 deadline. Each applicant can make up to five choices this way. The number of June deadline applications does not include choices made through the following routes: Clearing, Extra, Adjustment and RPAs. Applications made to October deadline courses received after the October deadline are not included in these statistics.

June deadline applicants

The number of applicants that made at least one application to the provider by the June 30 deadline.

June deadline applicants per 10,000 population

The number of UK domiciled 18 year old June deadline applicants to the provider divided by the number of UK 18 year olds in the population, multiplied by 10,000. This gives the number of 18 year olds, for every 10,000 in the population, who applied by the June 30 deadline. It is equivalent to the application rate. By referencing the underlying population this statistic shows how the number of June deadline applicants is changing in relation to the available pool of potential 18 year old applicants and so gives the chance that somebody from the group will apply to a provider by the June 30 deadline.

This statistic is only reported for 18 year olds.

Offers

An offer is defined as a provider's decision in response to an application to offer a place to an applicant, often subject to the applicant satisfying academic and/or other criteria, via a June deadline application (i.e. does not cover choices made through the following routes: Clearing, Extra, Adjustment and RPAs).

Offer rate

The number of offers made divided by the number of June deadline applications. This gives the proportion of all June deadline applications to the provider that received an offer.

Percentage point difference between offer rate and average offer rate

The offer rate minus the average offer rate.

The percentage point difference can be compared to the expected range of statistical variation resulting from the calculation of the average offer rate using the Average Offer Rate Lookup Table. Where the value of the percentage point difference lies outside of this range, the percentage point difference may be considered to represent a real difference between the offer rate and the average offer rate.

Other definitions

Age

This analysis uses country-specific age definitions that align with the cut off points for school and college cohorts within the different administrations of the UK. For England and Wales, ages are defined on the 31 August, for Northern Ireland on the 1 July and for Scotland on the 28 February the following year. Defining ages in this way matches the assignment of children to school cohorts. For applicants outside of the UK a cohort cut off of 31 August has been used.

Provider

A higher education provider - a university or college.

UK domiciled

Declared area of permanent residence within England, Northern Ireland, Scotland and Wales. Applicants from the Channel Islands and Isle of Man are not included.