

G28 University of Glasgow

Cycle years: 2010 - 2015

Cycle Reference Point: End of Cycle

Applicant coverage: UK domiciled

Reporting groups: Sex, POLAR3, SIMD, ethnic group

Applicant statistics: June deadline applicants, placed June deadline applicants, all placed applicants, June deadline applicants per 10,000 population, placed June deadline applicants per 10,000 population, all placed applicants per 10,000 population

Application statistics: June deadline applications, offers, offer rate, average offer rate, percentage point difference between offer rate and average offer rate, contribution of group to the average offer rate

Non-disclosure controls: To avoid the disclosure of information about any individual the following measures are taken

- Applicants, placed applicants, applications and offers are rounded to the nearest 5.
- Applicants/placed applicants per 10,000 population figures are reported as 0 if the applicant/placed applicant figures are rounded to 0.
- All statistics related to the offer rate are not reported when the number of applications for a group is less than 10. The percentage point difference between the offer rate and the average offer rate is not reported when the number of applications for a group is less than 50.
- Offer rates are reported as 0% if there are fewer than 5 offers, and 100% if the number of offers is within 5 of the number of applications. When the offer rate is reported as 0% or 100%, it is reported in italics.

Contents:

18 year old applicants:	P.1
18 year old applications:	P.2
18 year old applicants by sex:	P.3
18 year old applications by sex:	P.4
18 year old applicants by POLAR3 quintile:	P.7
18 year old applications by POLAR3 quintile:	P.8
18 year old, Scotland domiciled applicants by SIMD quintile:	P.11
18 year old, Scotland domiciled applications by SIMD quintile:	P.12
18 year old applicants by ethnic group:	P.15
18 year old applications by ethnic group:	P.16
Applicants (all ages):	P.19
Applications (all ages):	P.20
Applicants (all ages) by sex:	P.21
Applications (all ages) by sex:	P.22
Applicants (all ages) by POLAR3 quintile:	P.23
Applications (all ages) by POLAR3 quintile:	P.24
Scotland domiciled applicants (all ages) by SIMD quintile:	P.25
Scotland domiciled applications (all ages) by SIMD quintile:	P.26
Applicants (all ages) by ethnic group:	P.27
Applications (all ages) by ethnic group:	P.28

P.1 18 year old applicants

Statistic	2010	2011	2012	2013	2014	2015
June deadline applicants	12,530	10,515	11,510	13,195	10,415	10,385
Placed June deadline applicants	2,305	1,895	1,940	2,445	2,055	2,350
All placed applicants	2,360	1,960	2,015	2,545	2,245	2,430
June deadline applicants per 10,000 population	158.7	136.5	148.8	173.4	138.3	135.5
Placed June deadline applicants per 10,000	29.2	24.6	25.1	32.1	27.3	30.7
All placed applicants per 10,000 population	29.9	25.5	26.1	33.4	29.8	31.7

P.2 18 year old applications

Statistic	2010	2011	2012	2013	2014	2015
June deadline applications	16,055	13,360	14,485	16,480	12,710	12,455
Offers	9,785	7,550	8,740	10,290	8,785	9,260
Offer rate	60.9%	56.5%	60.3%	62.4%	69.1%	74.3%

P.3 18 year old applicants by sex

Statistic	Sex	2010	2011	2012	2013	2014	2015
June deadline applicants	Men	5,285	4,740	4,980	5,655	4,195	4,400
	Women	7,245	5,775	6,530	7,545	6,220	5,985
Placed June deadline applicants	Men	935	835	805	995	780	975
	Women	1,370	1,060	1,135	1,450	1,275	1,375
All placed applicants	Men	955	865	840	1,035	850	1,005
	Women	1,405	1,095	1,175	1,510	1,395	1,430
June deadline applicants per 10,000 population	Men	131.6	120.5	125.5	144.8	108.4	112.1
	Women	186.7	153.3	173.2	203.6	169.9	160.1
Placed June deadline applicants per 10,000 population	Men	23.3	21.2	20.3	25.5	20.1	24.8
	Women	35.3	28.2	30.2	39.1	34.8	36.8
All placed applicants per 10,000 population	Men	23.8	22.0	21.2	26.5	21.9	25.6
	Women	36.2	29.1	31.1	40.7	38.2	38.2

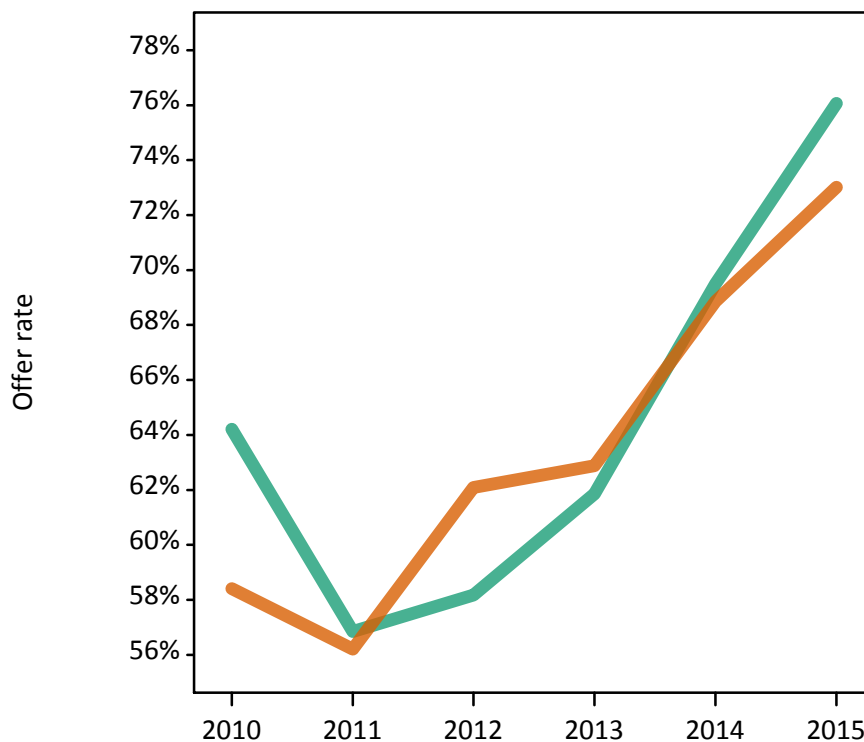
P.4 18 year old applications by sex

Statistic	Sex	2010	2011	2012	2013	2014	2015
June deadline applications	Men	7,025	6,285	6,515	7,305	5,250	5,395
	Women	9,030	7,075	7,970	9,175	7,465	7,060
Offers	Men	4,510	3,570	3,790	4,520	3,645	4,105
	Women	5,275	3,975	4,950	5,770	5,140	5,155
Offer rate	Men	64.2%	56.8%	58.2%	61.9%	69.5%	76.1%
	Women	58.4%	56.2%	62.1%	62.9%	68.9%	73.0%
Average offer rate	Men	65.0%	57.6%	59.7%	63.2%	71.1%	77.6%
	Women	57.8%	55.5%	60.9%	61.8%	67.7%	71.8%
Percentage point difference between offer rate and average offer rate	Men	-0.8	-0.8	-1.5	-1.3	-1.6	-1.5
	Women	0.6	0.7	1.2	1.1	1.2	1.2
Contribution of group to the average offer rate	Men	0.579	0.615	0.593	0.582	0.561	0.585
	Women	0.673	0.658	0.668	0.667	0.691	0.683

P.5 18 year old offer rate by sex

Note: The line for a group is not plotted when that group made fewer than 10 applications in any of the years from 2010-2015.

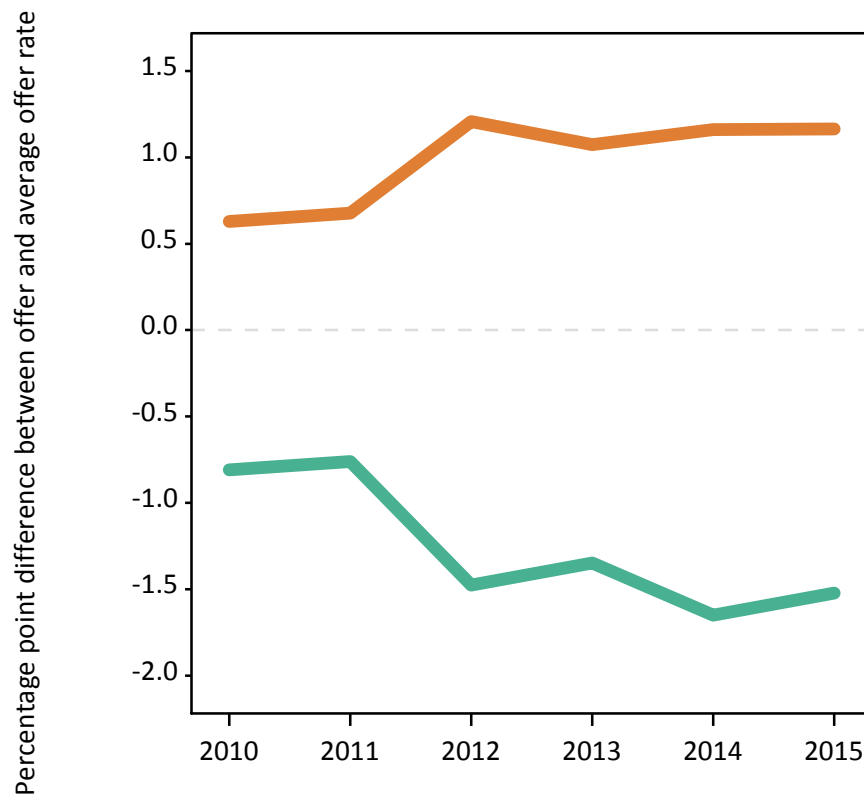
Men
Women



P.6 Percentage point difference between 18 year old offer rate and average offer rate by sex

Note: The line for a group is not plotted when that group made fewer than 50 applications in any of the years from 2010-2015.

Men
Women



P.7 18 year old applicants by POLAR3 quintile

Statistic	POLAR3 quintile	2010	2011	2012	2013	2014	2015
June deadline applicants	Quintile 1	555	395	455	570	490	515
	Quintile 2	1,180	1,080	1,085	1,305	1,020	1,070
	Quintile 3	1,880	1,500	1,740	1,995	1,505	1,470
	Quintile 4	2,925	2,520	2,705	3,070	2,435	2,460
	Quintile 5	5,970	4,990	5,510	6,225	4,945	4,840
Placed June deadline applicants	Quintile 1	80	60	90	90	90	95
	Quintile 2	120	160	145	250	190	230
	Quintile 3	305	235	265	335	290	295
	Quintile 4	530	445	430	530	450	560
	Quintile 5	1,270	990	1,010	1,235	1,035	1,165
All placed applicants	Quintile 1	80	60	95	95	100	100
	Quintile 2	130	170	150	260	210	235
	Quintile 3	320	245	275	355	315	305
	Quintile 4	540	460	440	545	500	580
	Quintile 5	1,290	1,015	1,050	1,280	1,120	1,205
June deadline applicants per 10,000 population	Quintile 1	37.5	27.6	31.8	40.9	35.3	36.6
	Quintile 2	76.8	71.8	72.3	88.5	69.6	72.2
	Quintile 3	118.1	97.5	112.5	130.7	100.1	95.9
	Quintile 4	183.5	160.8	170.3	196.4	157.9	157.3
	Quintile 5	352.4	301.5	328.0	376.5	303.3	289.1
Placed June deadline applicants per 10,000 population	Quintile 1	5.3	4.2	6.4	6.4	6.4	6.6
	Quintile 2	7.9	10.8	9.7	16.8	13.1	15.4
	Quintile 3	19.2	15.3	17.2	22.0	19.1	19.1
	Quintile 4	33.2	28.3	27.0	33.8	29.1	35.8
	Quintile 5	74.9	59.9	60.1	74.7	63.5	69.7
All placed applicants per 10,000 population	Quintile 1	5.4	4.2	6.8	6.8	7.2	7.1
	Quintile 2	8.5	11.4	10.0	17.8	14.4	15.9
	Quintile 3	20.0	16.0	17.9	23.2	20.8	20.0
	Quintile 4	33.8	29.4	27.7	34.9	32.4	37.0
	Quintile 5	76.1	61.4	62.6	77.3	68.5	71.9

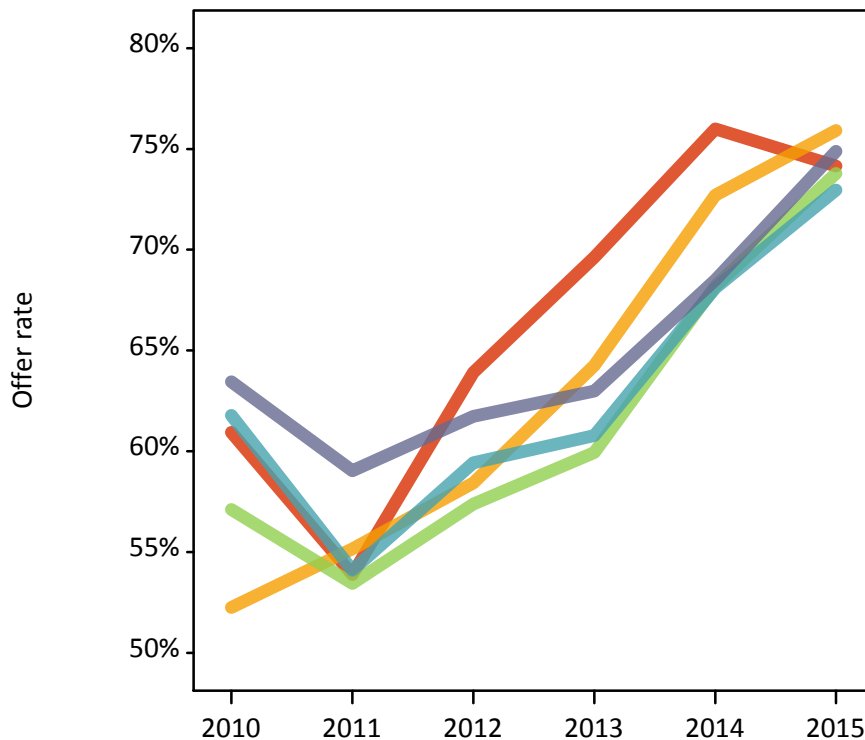
P.8 18 year old applications by POLAR3 quintile

Statistic	POLAR3 quintile	2010	2011	2012	2013	2014	2015
June deadline applications	Quintile 1	710	475	570	675	580	590
	Quintile 2	1,530	1,405	1,365	1,650	1,285	1,280
	Quintile 3	2,385	1,905	2,205	2,470	1,845	1,745
	Quintile 4	3,740	3,180	3,400	3,785	2,910	2,960
	Quintile 5	7,665	6,355	6,930	7,865	6,065	5,855
Offers	Quintile 1	430	255	365	470	440	435
	Quintile 2	800	775	795	1,060	935	970
	Quintile 3	1,360	1,015	1,265	1,480	1,260	1,285
	Quintile 4	2,310	1,720	2,020	2,300	1,985	2,160
	Quintile 5	4,865	3,750	4,280	4,955	4,155	4,385
Offer rate	Quintile 1	60.9%	53.9%	63.9%	69.6%	76.0%	74.1%
	Quintile 2	52.3%	55.2%	58.4%	64.3%	72.7%	75.9%
	Quintile 3	57.1%	53.4%	57.4%	59.9%	68.2%	73.8%
	Quintile 4	61.8%	54.1%	59.4%	60.8%	68.1%	73.0%
	Quintile 5	63.4%	59.0%	61.7%	63.0%	68.5%	74.9%
Average offer rate	Quintile 1	60.6%	53.6%	62.0%	65.0%	68.7%	72.6%
	Quintile 2	56.9%	54.4%	58.7%	61.8%	67.8%	72.2%
	Quintile 3	59.4%	54.9%	59.8%	61.2%	68.3%	72.8%
	Quintile 4	61.1%	56.5%	60.4%	62.3%	69.7%	74.4%
	Quintile 5	62.2%	57.6%	60.6%	62.8%	69.4%	75.4%
Percentage point difference between offer rate and average offer rate	Quintile 1	0.3	0.3	1.9	4.7	7.3	1.5
	Quintile 2	-4.6	0.7	-0.3	2.5	5.0	3.7
	Quintile 3	-2.3	-1.4	-2.4	-1.2	-0.1	1.0
	Quintile 4	0.7	-2.4	-0.9	-1.5	-1.6	-1.5
	Quintile 5	1.2	1.5	1.1	0.2	-0.9	-0.5
Contribution of group to the average offer rate	Quintile 1	0.127	0.133	0.119	0.126	0.148	0.165
	Quintile 2	0.159	0.176	0.162	0.167	0.177	0.186
	Quintile 3	0.204	0.198	0.211	0.197	0.207	0.209
	Quintile 4	0.282	0.291	0.286	0.273	0.285	0.299
	Quintile 5	0.520	0.521	0.520	0.518	0.525	0.525

P.9 18 year old offer rate by POLAR3 quintile

Note: The line for a group is not plotted when that group made fewer than 10 applications in any of the years from 2010-2015.

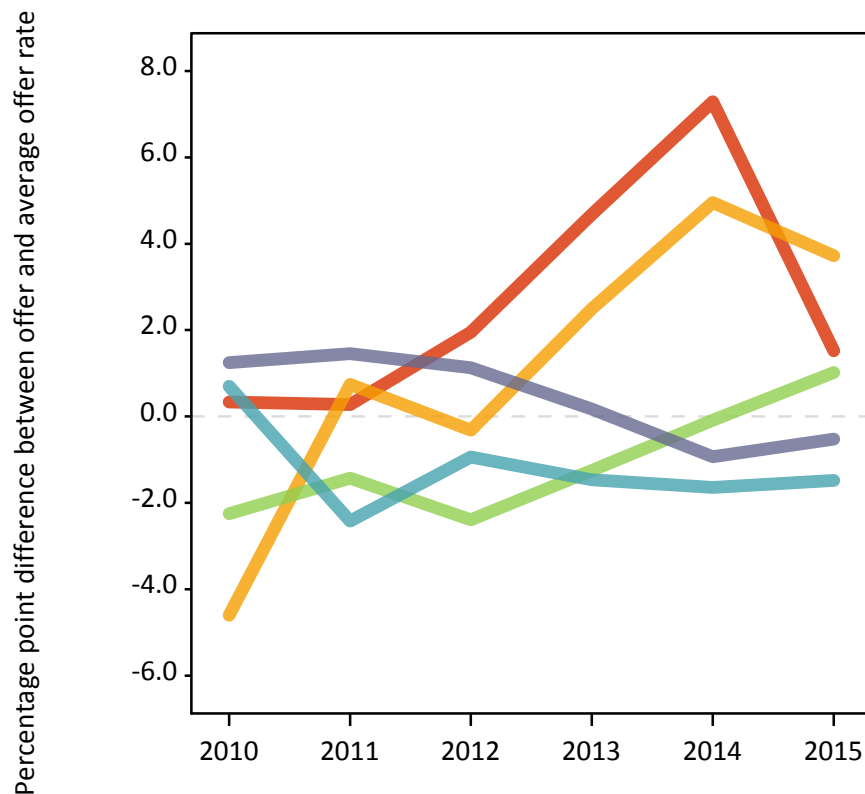
- Quintile 1
- Quintile 2
- Quintile 3
- Quintile 4
- Quintile 5



P.10 Percentage point difference between 18 year old offer rate and average offer rate by POLAR3 quintile

Note: The line for a group is not plotted when that group made fewer than 50 applications in any of the years from 2010-2015.

- Quintile 1
- Quintile 2
- Quintile 3
- Quintile 4
- Quintile 5



P.11 18 year old, Scotland domiciled applicants by SIMD quintile

Statistic	SIMD quintile	2010	2011	2012	2013	2014	2015
June deadline applicants	Quintile 1	750	630	715	780	715	630
	Quintile 2	1,110	945	970	1,115	900	835
	Quintile 3	1,605	1,390	1,435	1,530	1,220	1,275
	Quintile 4	2,135	1,850	1,900	2,080	1,750	1,650
	Quintile 5	3,185	2,780	3,020	3,195	2,710	2,530
Placed June deadline applicants	Quintile 1	130	120	140	175	180	185
	Quintile 2	200	170	185	200	210	260
	Quintile 3	335	250	305	320	250	290
	Quintile 4	460	345	350	405	360	415
	Quintile 5	770	575	620	670	595	705
All placed applicants	Quintile 1	135	120	150	185	190	190
	Quintile 2	205	175	190	205	220	265
	Quintile 3	340	260	315	330	265	300
	Quintile 4	465	360	365	410	370	415
	Quintile 5	780	590	635	680	605	715
June deadline applicants per 10,000 population	Quintile 1	552.5	470.5	548.0	593.3	543.9	493.1
	Quintile 2	892.4	785.1	825.1	952.8	773.8	733.8
	Quintile 3	1,293.1	1,133.1	1,186.7	1,286.2	1,034.7	1,097.7
	Quintile 4	1,707.1	1,483.0	1,527.9	1,680.2	1,415.8	1,344.3
	Quintile 5	2,462.9	2,183.4	2,398.4	2,562.9	2,191.7	2,071.8
Placed June deadline applicants per 10,000 population	Quintile 1	94.2	88.4	107.9	135.0	138.8	145.0
	Quintile 2	160.9	139.9	157.2	169.0	180.1	229.1
	Quintile 3	268.1	202.8	250.8	270.3	212.5	249.2
	Quintile 4	366.2	276.4	281.6	327.1	289.3	337.7
	Quintile 5	594.5	452.1	493.0	539.2	480.9	579.0
All placed applicants per 10,000 population	Quintile 1	97.9	89.9	114.8	139.6	144.2	148.2
	Quintile 2	165.8	144.9	159.8	173.3	187.8	231.7
	Quintile 3	273.8	210.2	262.3	275.4	223.5	257.8
	Quintile 4	372.6	290.0	292.9	330.4	298.2	339.3
	Quintile 5	603.0	464.6	504.1	544.0	490.5	584.7

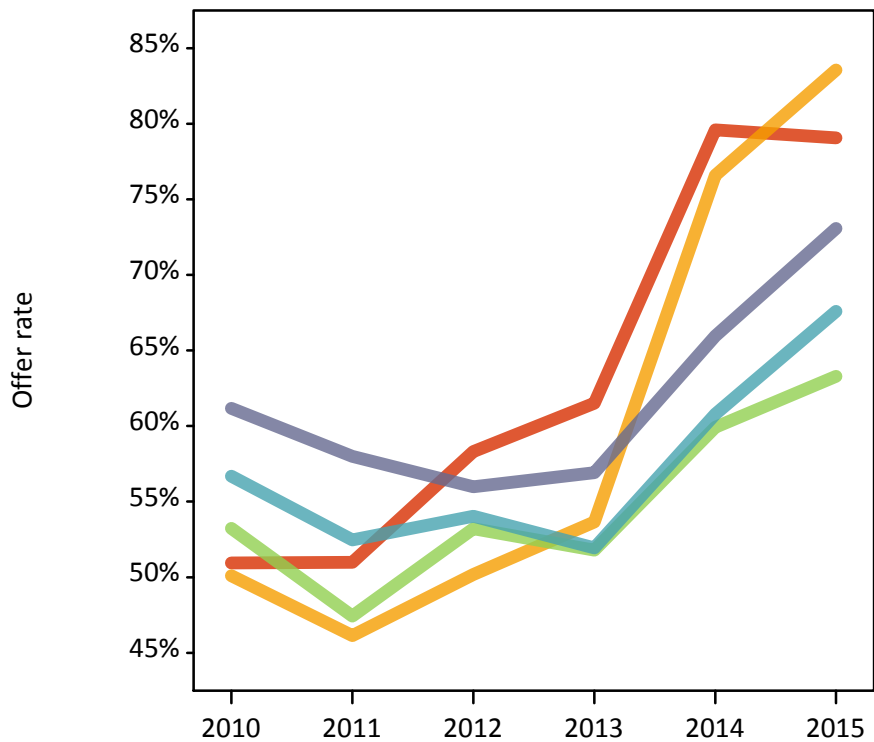
P.12 18 year old, Scotland domiciled applications by SIMD quintile

Statistic	SIMD quintile	2010	2011	2012	2013	2014	2015
June deadline applications	Quintile 1	1,115	870	1,055	1,095	960	835
	Quintile 2	1,605	1,345	1,330	1,535	1,225	1,090
	Quintile 3	2,245	1,925	2,000	2,145	1,605	1,640
	Quintile 4	2,915	2,470	2,500	2,780	2,255	2,080
	Quintile 5	4,295	3,720	4,025	4,275	3,480	3,240
Offers	Quintile 1	565	445	615	675	765	660
	Quintile 2	805	620	665	825	940	910
	Quintile 3	1,195	910	1,065	1,110	965	1,040
	Quintile 4	1,655	1,295	1,350	1,445	1,370	1,405
	Quintile 5	2,625	2,155	2,255	2,435	2,295	2,365
Offer rate	Quintile 1	50.9%	51.0%	58.3%	61.5%	79.6%	79.1%
	Quintile 2	50.1%	46.1%	50.2%	53.7%	76.6%	83.5%
	Quintile 3	53.2%	47.4%	53.2%	51.8%	59.9%	63.3%
	Quintile 4	56.7%	52.5%	54.0%	51.9%	60.8%	67.6%
	Quintile 5	61.2%	58.0%	56.0%	56.9%	66.0%	73.1%
Average offer rate	Quintile 1	51.5%	48.9%	52.8%	51.7%	62.8%	68.3%
	Quintile 2	54.8%	50.4%	52.4%	53.4%	65.1%	69.7%
	Quintile 3	55.2%	51.1%	54.3%	54.6%	66.2%	70.8%
	Quintile 4	56.2%	53.2%	54.9%	54.3%	66.8%	72.8%
	Quintile 5	58.6%	54.6%	55.6%	56.5%	67.9%	73.3%
Percentage point difference between offer rate and average offer rate	Quintile 1	-0.5	2.1	5.5	9.9	16.9	10.7
	Quintile 2	-4.7	-4.3	-2.2	0.2	11.5	13.8
	Quintile 3	-2.0	-3.7	-1.1	-2.9	-6.2	-7.5
	Quintile 4	0.5	-0.7	-0.9	-2.4	-6.0	-5.2
	Quintile 5	2.6	3.4	0.4	0.4	-1.9	-0.3
Contribution of group to the average offer rate	Quintile 1	0.124	0.123	0.135	0.124	0.149	0.136
	Quintile 2	0.158	0.160	0.146	0.157	0.167	0.159
	Quintile 3	0.206	0.212	0.206	0.202	0.197	0.210
	Quintile 4	0.259	0.262	0.247	0.255	0.264	0.261
	Quintile 5	0.381	0.386	0.395	0.391	0.397	0.394

P.13 18 year old, Scotland domiciled offer rate by SIMD quintile

Note: The line for a group is not plotted when that group made fewer than 10 applications in any of the years from 2010-2015.

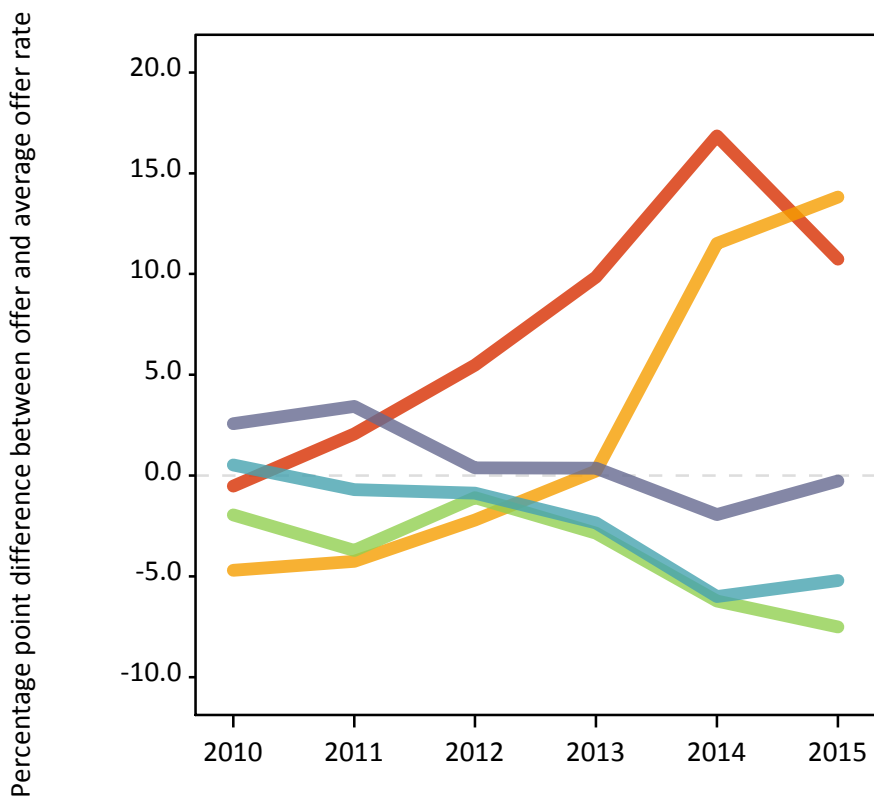
- Quintile 1
- Quintile 2
- Quintile 3
- Quintile 4
- Quintile 5



P.14 Percentage point difference between 18 year old, Scotland domiciled offer rate and average offer rate by SIMD quintile

Note: The line for a group is not plotted when that group made fewer than 50 applications in any of the years from 2010-2015.

- Quintile 1
- Quintile 2
- Quintile 3
- Quintile 4
- Quintile 5



P.15 18 year old applicants by ethnic group

Statistic	Ethnic group	2010	2011	2012	2013	2014	2015
June deadline applicants	Asian	450	425	470	570	470	465
	Black	55	55	65	115	80	90
	Mixed	185	190	210	285	230	250
	White	11,760	9,765	10,680	12,120	9,555	9,475
	Other	30	25	45	50	55	50
Placed June deadline applicants	Asian	50	50	65	85	75	90
	Black	5	5	5	20	10	10
	Mixed	25	35	35	50	35	50
	White	2,215	1,800	1,820	2,280	1,915	2,175
	Other	5	5	5	10	10	10
All placed applicants	Asian	55	50	75	85	85	95
	Black	5	5	5	20	15	10
	Mixed	25	35	35	55	45	55
	White	2,260	1,860	1,885	2,365	2,080	2,240
	Other	5	5	5	10	10	10
June deadline applicants per 10,000 population	Asian	72.6	67.6	72.4	86.7	69.5	65.9
	Black	21.8	20.8	22.4	39.4	25.7	28.0
	Mixed	79.4	78.9	81.4	105.0	80.3	81.4
	White	175.4	150.8	165.4	192.6	154.8	152.1
	Other	36.4	33.3	49.7	54.0	56.9	50.9
Placed June deadline applicants per 10,000 population	Asian	8.4	7.8	10.3	12.7	11.4	12.9
	Black	2.3	1.5	2.1	6.1	3.6	2.8
	Mixed	9.9	14.0	13.1	18.5	12.9	16.5
	White	33.0	27.8	28.2	36.2	31.0	34.9
	Other	3.9	4.9	7.9	11.0	9.7	10.4
All placed applicants per 10,000 population	Asian	8.9	8.3	11.4	13.2	12.8	13.6
	Black	2.7	1.5	2.1	7.4	4.9	3.1
	Mixed	10.4	15.3	14.2	20.0	16.0	17.8
	White	33.7	28.7	29.2	37.6	33.7	36.0
	Other	6.5	4.9	7.9	12.1	10.7	11.4

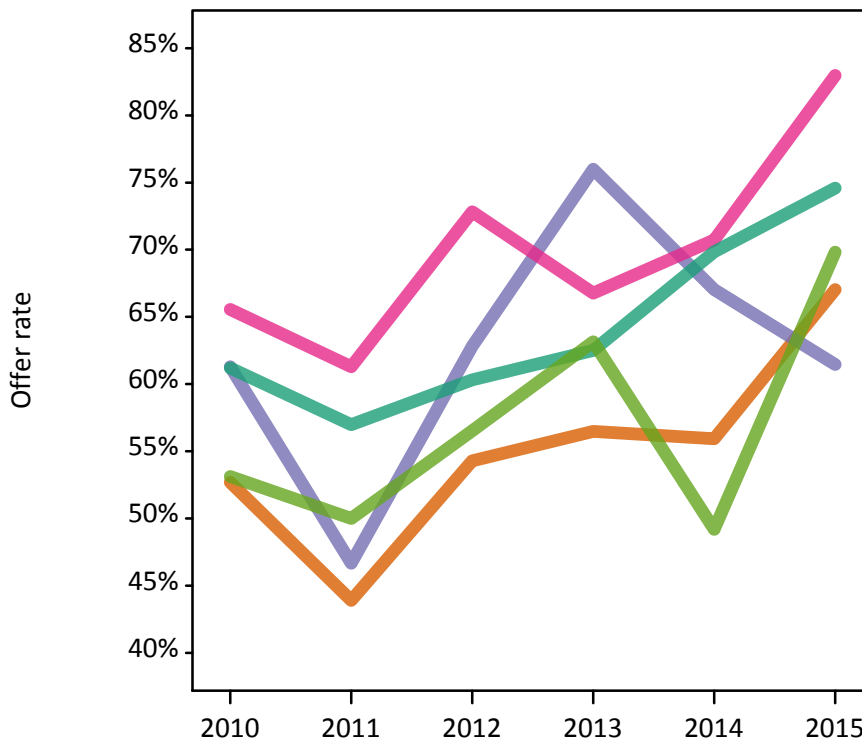
P.16 18 year old applications by ethnic group

Statistic	Ethnic group	2010	2011	2012	2013	2014	2015
June deadline applications	Asian	575	515	570	705	555	550
	Black	60	60	80	125	90	95
	Mixed	210	215	255	330	265	280
	White	15,115	12,485	13,490	15,205	11,715	11,415
	Other	30	30	45	55	60	55
Offers	Asian	305	225	310	395	310	370
	Black	40	30	50	95	60	60
	Mixed	140	135	185	220	185	235
	White	9,250	7,115	8,140	9,505	8,180	8,515
	Other	15	15	25	35	30	35
Offer rate	Asian	52.7%	43.9%	54.3%	56.5%	55.9%	67.0%
	Black	61.3%	46.7%	62.8%	76.0%	67.0%	61.5%
	Mixed	65.6%	61.3%	72.8%	66.8%	70.7%	83.0%
	White	61.2%	57.0%	60.3%	62.5%	69.8%	74.6%
	Other	53.1%	50.0%	56.5%	63.2%	49.2%	69.8%
Average offer rate	Asian	55.3%	49.1%	57.3%	59.3%	58.1%	69.3%
	Black	60.4%	52.3%	62.9%	75.2%	66.7%	68.3%
	Mixed	65.7%	61.5%	67.9%	68.1%	72.5%	80.5%
	White	61.1%	56.7%	60.3%	62.3%	69.7%	74.5%
	Other	58.7%	52.4%	62.3%	65.3%	48.6%	67.9%
Percentage point difference between offer rate and average offer rate	Asian	-2.6	-5.2	-3.0	-2.8	-2.1	-2.2
	Black	0.9	-5.6	-0.1	0.8	0.3	-6.9
	Mixed	-0.2	-0.2	5.0	-1.3	-1.8	2.5
	White	0.1	0.3	0.1	0.2	0.2	0.1
	Other	N/A	N/A	N/A	-2.2	0.6	1.9
Contribution of group to the average offer rate	Asian	0.135	0.157	0.144	0.145	0.160	0.159
	Black	0.135	0.197	0.127	0.164	0.184	0.147
	Mixed	0.116	0.119	0.106	0.114	0.126	0.118
	White	0.948	0.944	0.939	0.932	0.933	0.928
	Other	0.083	0.056	0.102	0.054	0.106	0.125

P.17 18 year old offer rate by ethnic group

Note: The line for a group is not plotted when that group made fewer than 10 applications in any of the years from 2010-2015.

- Asian
- Black
- Mixed
- White
- Other



P.18 Percentage point difference between 18 year old offer rate and average offer rate by ethnic group

Note: The line for a group is not plotted when that group made fewer than 50 applications in any of the years from 2010-2015.

- Asian
- Black
- Mixed
- White
- Other



P.19 Applicants (all ages)

Statistic	2010	2011	2012	2013	2014	2015
June deadline applicants	18,790	17,060	18,265	20,595	17,085	19,800
Placed June deadline applicants	3,465	3,185	3,180	3,735	3,200	3,900
All placed applicants	3,580	3,285	3,305	3,875	3,505	4,050

P.20 Applications (all ages)

Statistic	2010	2011	2012	2013	2014	2015
June deadline applications	24,135	21,575	23,065	25,700	20,970	23,480
Offers	13,985	11,635	13,125	14,770	12,615	13,660
Offer rate	58.0%	53.9%	56.9%	57.5%	60.2%	58.2%

P.21 Applicants (all ages) by sex

Statistic	Sex	2010	2011	2012	2013	2014	2015
June deadline applicants	Men	8,095	7,750	8,095	9,170	7,195	8,130
	Women	10,695	9,310	10,170	11,425	9,890	11,670
Placed June deadline applicants	Men	1,490	1,450	1,390	1,600	1,305	1,575
	Women	1,975	1,735	1,790	2,130	1,895	2,325
All placed applicants	Men	1,535	1,500	1,450	1,660	1,420	1,640
	Women	2,045	1,785	1,855	2,215	2,085	2,410

P.22 Applications (all ages) by sex

Statistic	Sex	2010	2011	2012	2013	2014	2015
June deadline applications	Men	10,805	10,165	10,630	11,820	9,030	9,865
	Women	13,330	11,410	12,435	13,880	11,940	13,620
Offers	Men	6,605	5,580	5,960	6,735	5,425	6,035
	Women	7,385	6,055	7,165	8,035	7,190	7,625
Offer rate	Men	61.1%	54.9%	56.1%	57.0%	60.1%	61.2%
	Women	55.4%	53.1%	57.6%	57.9%	60.2%	56.0%

P.23 Applicants (all ages) by POLAR3 quintile

Statistic	POLAR3 quintile	2010	2011	2012	2013	2014	2015
June deadline applicants	Quintile 1	965	850	895	1,100	955	1,155
	Quintile 2	1,995	1,895	1,935	2,225	1,910	2,285
	Quintile 3	2,865	2,615	2,835	3,135	2,585	3,030
	Quintile 4	4,370	3,960	4,270	4,795	3,880	4,610
	Quintile 5	8,545	7,685	8,270	9,280	7,715	8,650
Placed June deadline applicants	Quintile 1	140	125	155	175	145	185
	Quintile 2	245	295	285	410	325	420
	Quintile 3	460	435	445	520	450	545
	Quintile 4	765	730	690	810	685	885
	Quintile 5	1,840	1,595	1,595	1,805	1,590	1,860
All placed applicants	Quintile 1	145	125	160	180	170	200
	Quintile 2	260	310	295	430	355	435
	Quintile 3	480	455	460	545	495	570
	Quintile 4	790	750	725	835	765	915
	Quintile 5	1,895	1,635	1,650	1,870	1,715	1,920

P.24 Applications (all ages) by POLAR3 quintile

Statistic	POLAR3 quintile	2010	2011	2012	2013	2014	2015
June deadline applications	Quintile 1	1,235	1,035	1,110	1,330	1,150	1,325
	Quintile 2	2,605	2,430	2,455	2,830	2,400	2,705
	Quintile 3	3,655	3,265	3,565	3,885	3,155	3,545
	Quintile 4	5,565	4,955	5,350	5,885	4,670	5,485
	Quintile 5	11,020	9,825	10,505	11,700	9,560	10,340
Offers	Quintile 1	700	505	605	780	630	690
	Quintile 2	1,315	1,225	1,310	1,635	1,400	1,495
	Quintile 3	2,020	1,670	1,930	2,095	1,850	1,970
	Quintile 4	3,225	2,600	2,985	3,300	2,775	3,145
	Quintile 5	6,695	5,600	6,235	6,925	5,950	6,320
Offer rate	Quintile 1	56.8%	48.7%	54.6%	58.6%	54.7%	52.0%
	Quintile 2	50.4%	50.5%	53.3%	57.7%	58.3%	55.2%
	Quintile 3	55.3%	51.1%	54.1%	53.9%	58.7%	55.6%
	Quintile 4	58.0%	52.5%	55.8%	56.1%	59.4%	57.3%
	Quintile 5	60.8%	57.0%	59.4%	59.2%	62.2%	61.1%

P.25 Scotland domiciled applicants (all ages) by SIMD quintile

Statistic	SIMD quintile	2010	2011	2012	2013	2014	2015
June deadline applicants	Quintile 1	1,625	1,525	1,745	1,845	1,705	1,975
	Quintile 2	1,915	1,810	1,845	2,025	1,785	2,185
	Quintile 3	2,545	2,330	2,435	2,690	2,210	2,715
	Quintile 4	3,110	2,880	2,985	3,210	2,815	3,180
	Quintile 5	4,425	4,155	4,430	4,620	4,075	4,505
Placed June deadline applicants	Quintile 1	280	295	325	385	340	405
	Quintile 2	325	335	345	350	355	505
	Quintile 3	525	440	525	525	435	525
	Quintile 4	670	555	575	635	545	670
	Quintile 5	1,050	910	925	960	885	1,050
All placed applicants	Quintile 1	290	305	335	390	365	415
	Quintile 2	335	340	355	365	380	515
	Quintile 3	545	455	550	535	460	545
	Quintile 4	680	585	600	640	570	680
	Quintile 5	1,085	935	955	970	910	1,065

P.26 Scotland domiciled applications (all ages) by SIMD quintile

Statistic	SIMD quintile	2010	2011	2012	2013	2014	2015
June deadline applications	Quintile 1	2,360	2,060	2,405	2,555	2,260	2,510
	Quintile 2	2,720	2,475	2,525	2,710	2,370	2,710
	Quintile 3	3,500	3,150	3,310	3,650	2,880	3,370
	Quintile 4	4,255	3,795	3,940	4,240	3,600	3,910
	Quintile 5	5,930	5,565	5,880	6,105	5,235	5,585
Offers	Quintile 1	1,215	1,005	1,270	1,380	1,290	1,255
	Quintile 2	1,345	1,170	1,220	1,315	1,410	1,530
	Quintile 3	1,875	1,520	1,745	1,810	1,540	1,650
	Quintile 4	2,380	1,970	2,135	2,175	2,005	2,095
	Quintile 5	3,555	3,220	3,280	3,385	3,215	3,370
Offer rate	Quintile 1	51.4%	48.7%	52.9%	54.0%	57.0%	50.0%
	Quintile 2	49.5%	47.3%	48.2%	48.6%	59.5%	56.4%
	Quintile 3	53.5%	48.3%	52.7%	49.6%	53.4%	48.9%
	Quintile 4	56.0%	51.9%	54.2%	51.2%	55.7%	53.6%
	Quintile 5	59.9%	57.8%	55.8%	55.4%	61.4%	60.3%

P.27 Applicants (all ages) by ethnic group

Statistic	Ethnic group	2010	2011	2012	2013	2014	2015
June deadline applicants	Asian	885	905	920	1,075	950	1,070
	Black	235	260	290	325	285	345
	Mixed	335	340	385	450	385	480
	White	17,170	15,385	16,465	18,490	15,275	17,595
	Other	65	55	105	105	100	145
Placed June deadline applicants	Asian	95	130	120	155	150	150
	Black	20	20	25	40	30	25
	Mixed	50	55	60	90	65	85
	White	3,275	2,955	2,955	3,410	2,930	3,580
	Other	10	5	10	15	15	25
All placed applicants	Asian	100	135	130	160	160	165
	Black	20	25	25	45	40	30
	Mixed	50	60	60	95	75	95
	White	3,375	3,035	3,060	3,530	3,190	3,700
	Other	10	10	10	15	20	30

P.28 Applications (all ages) by ethnic group

Statistic	Ethnic group	2010	2011	2012	2013	2014	2015
June deadline applications	Asian	1,135	1,080	1,130	1,320	1,135	1,220
	Black	265	290	330	360	325	375
	Mixed	385	400	475	525	445	555
	White	22,155	19,625	20,895	23,200	18,845	20,970
	Other	70	60	125	120	110	160
Offers	Asian	570	455	565	670	540	595
	Black	115	100	135	185	120	130
	Mixed	235	215	295	340	280	365
	White	12,965	10,765	12,000	13,415	11,570	12,390
	Other	35	25	60	65	45	75
Offer rate	Asian	50.1%	42.3%	49.9%	50.6%	47.5%	48.5%
	Black	43.3%	35.2%	41.5%	51.5%	37.1%	34.6%
	Mixed	61.0%	53.9%	62.7%	64.8%	63.1%	65.4%
	White	58.5%	54.9%	57.4%	57.8%	61.4%	59.1%
	Other	51.4%	44.3%	48.0%	56.3%	42.3%	48.1%

Technical Notes and Definitions

UCAS undergraduate scheme

Adjustment

Adjustment allows applicants who have met and exceeded the terms of their conditional firm offer to seek and find a place at another provider whilst keeping their place at their original firm choice provider.

Clearing

Clearing is a route for applicants that are not placed and holding no offers to find a place on courses with vacancies.

Cycle year

The UCAS application cycle which runs from September to October the following year. For example the 2015 cycle runs from September 2014 through to October 2015.

End of cycle

The point in the cycle to which the numbers in this report refer, and the point at which the cycle is closed such that no more applications or offers can be made, and no more applicants can be placed. Numbers reported at the end of cycle exclude information on a small number of applicants who cancelled during the cycle.

Extra

Applicants who are unsuccessful in obtaining an offer or decline all offers may be eligible to apply through Extra, where they can apply to one further course at a time. Extra operates from 25 February until early July. It provides applicants who are eligible the possibility of obtaining an offer before exam results are published and Clearing starts.

June 30 deadline

The deadline for main scheme applications. Applicants who apply after this date will go directly into Clearing.

Record of Prior Acceptance (RPA)

RPA is an acceptance route used when a provider informs UCAS of applicants it has accepted outside of the normal application process (e.g. individuals who have applied directly to the provider).

Reporting groups

Ethnic group

High level grouping of ethnic origin as declared by the applicant: 'White', 'Black', 'Asian', 'Mixed', 'Other', 'Unknown'. Applicants who declare themselves as 'Unknown' ethnic origin are not reported in these tables, but are included in the associated csv data file.

POLAR3 quintile

Developed by HEFCE, POLAR3 classifies small areas across the UK into five groups according to their level of young participation in Higher Education. Each of these groups represents around 20 per cent of young people and is ranked from Quintile 1 (areas with the lowest young participation rates, considered as the most disadvantaged) to Quintile 5 (highest young participation rates, considered most advantaged). POLAR3 is based on the participation rates of young people between 2005 and 2009 who entered Higher Education between 2005-06 and 2010-11, therefore is most suitable for applicants aged 19 and under. These groups are assigned using the postcode declared by the applicant at the time of their application. If a UK postcode is invalid, considered unsafe for measurement or there is no link to Census geography possible then the applicant is not assigned to a quintile. Applicants with no POLAR3 quintile are not reported.

Sex

Sex as declared by the applicant.

SIMD quintile

Scottish index of multiple deprivation (SIMD) for 2012 identifies small area concentrations of multiple deprivation across all of Scotland, providing a relative measure of deprivation amongst 6505 small areas (data zones) based on 7 socio-economic domains. These small areas are classified into five groups ranked from Quintile 1 (considered the most deprived) to Quintile 5 (considered least deprived), with equal populations in each quintile. Quintiles are assigned using the postcode declared by the applicant, applicants declaring invalid postcodes are classified as 'Not assigned' and are not reported.

SIMD is only defined for applicants domiciled in Scotland, therefore any applicants domiciled outside of Scotland cannot be assigned to an SIMD quintile and so are not reported for this measure.

SIMD is only reported for providers in Scotland. Application and entry rates by SIMD are reported in the 2015 End of Cycle Report and the 2016 cycle January deadline application rate report.

Statistics reported in the tables

All placed applicants

The number of applicants placed for entry into higher education at the provider through one of their choices, including any choices made through Extra, or via Adjustment, Clearing or RPA.

All placed applicants per 10,000 population

The number of total UK domiciled 18 year old placed applicants for entry into higher education at the provider divided by the number of UK 18 year olds in the population, multiplied by 10,000. This gives the number of 18 year olds, for every 10,000 in the population, that were placed at the provider through one of their choices, including any choices made through Extra, or via Adjustment, Clearing or RPA. It is an alternative way of expressing the entry rate to a provider. By referencing the underlying population this statistic shows how the number of placed applicants is changing in relation to the available pool of potential applicants and so gives the chance that somebody from the group will be placed at a provider.

This statistic is only reported for 18 year olds.

Average offer rate

The offer rate that you might expect if the predicted grades and subject choice of applicants were the only factors that influenced whether an applicant was made an offer by the provider. The average offer rate is calculated by dividing applicants according to their specific combination of grades (for A levels the best three predicted grades are used, for BTECs, International Baccalaureate and Scottish Highers and Advanced Highers, predicted grades along with any grades already achieved upon applying are used) and subject choice. For each combination the number of main scheme offers is divided by the number of main scheme applications, to give an overall offer rate. This is then multiplied by the number of applications made by the group for which the average offer rate is being calculated (for example POLAR3 quintile 1), to give an average number of offers for that group. These average number of offers are then added together across all combinations of predicted grade and subject and divided by the number of main scheme applications from the group to give the average offer rate.

The average offer rate does not attempt to control for any other factors that may play a part in the decision to make an offer, such as the subject of the qualifications studied, their relevance to a course, or the grade in each subject; higher numbers of A levels being studied; the exact profile of grades predicted; personal statements; teacher references; interviews; or any other criteria (such as work experience or portfolios) that may be part of the admissions decision.

This statistic is only reported for 18 year olds.

Contribution of group to the average offer rate

The way in which the average offer rate is defined means that the pattern of application and offers of a group (for example POLAR3 quintile 1) will always contribute, in part, to the average offer rate for that group. When this contribution is large, the average offer rate will mainly reflect the patterns for the group, meaning that the value of the average offer rate will be similar to the offer rate, the percentage point difference statistic will be small, and any real difference between the offer rate and what might be expected given the predicted grades and subject choices of the applicants will be difficult to detect.

Values of the contribution of group to the average offer rate range between 0 and 1. The closer the value is to 1 the greater the contribution a group makes to its own average offer rate.

This statistic is only reported for 18 year olds.

Placed June deadline applicants

An applicant who has been placed for entry into higher education at the provider through a June deadline application.

Placed June deadline applicants per 10,000 population

The number of UK domiciled 18 year old placed June deadline applicants at the provider divided by the number of UK 18 year olds in the population, multiplied by 10,000. This gives the number of 18 year olds, for every 10,000 in the population, that were placed at the provider through one of their June deadline applications. It is an alternative way of expressing the entry rate to a provider, but for placed June deadline applicants only. By referencing the underlying population this statistic shows how the number of placed June deadline applicants is changing in relation to the available pool of potential 18 year old applicants and so gives the chance that somebody from the group will be placed at a provider through a June deadline application.

This statistic is only reported for 18 year olds.

June deadline applications

An application (or choice) to a course in higher education to the provider that is made by the June 30 deadline. Each applicant can make up to five choices this way. The number of June deadline applications does not include choices made through the following routes: Clearing, Extra, Adjustment and RPAs. Applications made to October deadline courses received after the October deadline are not included in these statistics.

June deadline applicants

The number of applicants that made at least one application to the provider by the June 30 deadline.

June deadline applicants per 10,000 population

The number of UK domiciled 18 year old June deadline applicants to the provider divided by the number of UK 18 year olds in the population, multiplied by 10,000. This gives the number of 18 year olds, for every 10,000 in the population, who applied by the June 30 deadline. It is equivalent to the application rate. By referencing the underlying population this statistic shows how the number of June deadline applicants is changing in relation to the available pool of potential 18 year old applicants and so gives the chance that somebody from the group will apply to a provider by the June 30 deadline.

This statistic is only reported for 18 year olds.

Offers

An offer is defined as a provider's decision in response to an application to offer a place to an applicant, often subject to the applicant satisfying academic and/or other criteria, via a June deadline application (i.e. does not cover choices made through the following routes: Clearing, Extra, Adjustment and RPAs).

Offer rate

The number of offers made divided by the number of June deadline applications. This gives the proportion of all June deadline applications to the provider that received an offer.

Percentage point difference between offer rate and average offer rate

The offer rate minus the average offer rate.

The percentage point difference can be compared to the expected range of statistical variation resulting from the calculation of the average offer rate using the Average Offer Rate Lookup Table. Where the value of the percentage point difference lies outside of this range, the percentage point difference may be considered to represent a real difference between the offer rate and the average offer rate.

Other definitions

Age

This analysis uses country-specific age definitions that align with the cut off points for school and college cohorts within the different administrations of the UK. For England and Wales, ages are defined on the 31 August, for Northern Ireland on the 1 July and for Scotland on the 28 February the following year. Defining ages in this way matches the assignment of children to school cohorts. For applicants outside of the UK a cohort cut off of 31 August has been used.

Provider

A higher education provider - a university or college.

UK domiciled

Declared area of permanent residence within England, Northern Ireland, Scotland and Wales. Applicants from the Channel Islands and Isle of Man are not included.