

F33 Falmouth University

Cycle years: 2010 - 2015

Cycle Reference Point: End of Cycle

Applicant coverage: UK domiciled

Reporting groups: Sex, POLAR3, ethnic group

Applicant statistics: June deadline applicants, placed June deadline applicants, all placed applicants, June deadline applicants per 10,000 population, placed June deadline applicants per 10,000 population, all placed applicants per 10,000 population

Application statistics: June deadline applications, offers, offer rate, average offer rate, percentage point difference between offer rate and average offer rate, contribution of group to the average offer rate

Non-disclosure controls: To avoid the disclosure of information about any individual the following measures are taken

- Applicants, placed applicants, applications and offers are rounded to the nearest 5.
- Applicants/placed applicants per 10,000 population figures are reported as 0 if the applicant/placed applicant figures are rounded to 0.
- All statistics related to the offer rate are not reported when the number of applications for a group is less than 10. The percentage point difference between the offer rate and the average offer rate is not reported when the number of applications for a group is less than 50.
- Offer rates are reported as 0% if there are fewer than 5 offers, and 100% if the number of offers is within 5 of the number of applications. When the offer rate is reported as 0% or 100%, it is reported in italics.

Contents:

18 year old applicants:	P.1
18 year old applications:	P.2
18 year old applicants by sex:	P.3
18 year old applications by sex:	P.4
18 year old applicants by POLAR3 quintile:	P.7
18 year old applications by POLAR3 quintile:	P.8
18 year old applicants by ethnic group:	P.11
18 year old applications by ethnic group:	P.12
Applicants (all ages):	P.15
Applications (all ages):	P.16
Applicants (all ages) by sex:	P.17
Applications (all ages) by sex:	P.18
Applicants (all ages) by POLAR3 quintile:	P.19
Applications (all ages) by POLAR3 quintile:	P.20
Applicants (all ages) by ethnic group:	P.21
Applications (all ages) by ethnic group:	P.22

P.1 18 year old applicants

Statistic	2010	2011	2012	2013	2014	2015
June deadline applicants	1,645	2,470	2,100	1,845	2,600	2,895
Placed June deadline applicants	395	490	505	505	740	775
All placed applicants	460	535	555	550	755	800
June deadline applicants per 10,000 population	20.8	32.1	27.1	24.2	34.5	37.8
Placed June deadline applicants per 10,000	5.0	6.3	6.5	6.6	9.8	10.1
All placed applicants per 10,000 population	5.8	7.0	7.2	7.2	10.1	10.4

P.2 18 year old applications

Statistic	2010	2011	2012	2013	2014	2015
June deadline applications	1,735	2,600	2,215	1,940	2,755	3,070
Offers	730	1,010	960	1,005	1,430	1,545
Offer rate	42.2%	38.9%	43.3%	51.8%	51.9%	50.3%

P.3 18 year old applicants by sex

Statistic	Sex	2010	2011	2012	2013	2014	2015
June deadline applicants	Men	630	890	680	605	855	1,045
	Women	1,015	1,580	1,420	1,235	1,745	1,845
Placed June deadline applicants	Men	160	210	165	175	260	290
	Women	235	280	335	330	480	480
All placed applicants	Men	195	230	190	190	270	305
	Women	270	310	365	360	490	495
June deadline applicants per 10,000 population	Men	15.7	22.6	17.2	15.5	22.1	26.7
	Women	26.1	42.0	37.6	33.4	47.7	49.4
Placed June deadline applicants per 10,000 population	Men	4.0	5.4	4.2	4.5	6.7	7.4
	Women	6.0	7.4	8.9	8.9	13.1	12.9
All placed applicants per 10,000 population	Men	4.8	5.8	4.8	4.8	6.9	7.7
	Women	6.9	8.2	9.7	9.7	13.4	13.2

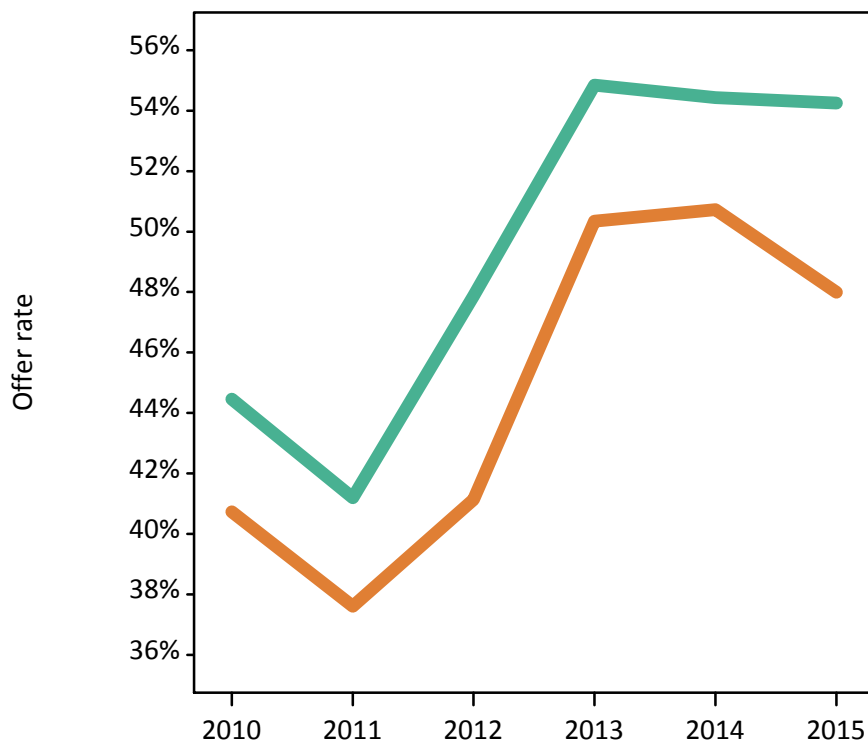
P.4 18 year old applications by sex

Statistic	Sex	2010	2011	2012	2013	2014	2015
June deadline applications	Men	670	935	725	640	900	1,130
	Women	1,070	1,660	1,490	1,300	1,855	1,940
Offers	Men	295	385	350	350	490	615
	Women	435	625	610	655	940	930
Offer rate	Men	44.5%	41.2%	47.9%	54.8%	54.4%	54.2%
	Women	40.7%	37.6%	41.1%	50.3%	50.7%	48.0%
Average offer rate	Men	42.8%	40.3%	45.6%	53.8%	54.3%	52.6%
	Women	41.7%	38.1%	42.2%	50.9%	50.8%	49.0%
Percentage point difference between offer rate and average offer rate	Men	1.6	0.8	2.3	1.0	0.1	1.7
	Women	-1.0	-0.5	-1.1	-0.5	-0.1	-1.0
Contribution of group to the average offer rate	Men	0.510	0.482	0.454	0.459	0.461	0.506
	Women	0.693	0.708	0.733	0.734	0.738	0.712

P.5 18 year old offer rate by sex

Note: The line for a group is not plotted when that group made fewer than 10 applications in any of the years from 2010-2015.

Men
Women



P.6 Percentage point difference between 18 year old offer rate and average offer rate by sex

Note: The line for a group is not plotted when that group made fewer than 50 applications in any of the years from 2010-2015.

Men
Women



P.7 18 year old applicants by POLAR3 quintile

Statistic	POLAR3 quintile	2010	2011	2012	2013	2014	2015
June deadline applicants	Quintile 1	180	295	220	180	295	330
	Quintile 2	315	385	335	310	485	495
	Quintile 3	285	500	440	400	510	615
	Quintile 4	435	595	560	485	645	720
	Quintile 5	425	690	535	470	655	725
Placed June deadline applicants	Quintile 1	45	55	45	40	60	75
	Quintile 2	70	75	70	80	130	135
	Quintile 3	65	95	100	95	150	170
	Quintile 4	120	110	150	140	195	195
	Quintile 5	95	155	140	145	200	195
All placed applicants	Quintile 1	50	60	45	45	60	80
	Quintile 2	80	80	85	90	135	140
	Quintile 3	80	100	110	100	150	170
	Quintile 4	135	125	160	150	205	205
	Quintile 5	110	170	155	160	205	200
June deadline applicants per 10,000 population	Quintile 1	12.1	20.5	15.3	12.8	21.3	23.4
	Quintile 2	20.5	25.7	22.5	20.9	33.3	33.5
	Quintile 3	18.0	32.4	28.5	26.2	33.8	40.0
	Quintile 4	27.4	38.1	35.4	31.0	41.9	46.1
	Quintile 5	25.0	41.6	32.0	28.4	40.3	43.3
Placed June deadline applicants per 10,000 population	Quintile 1	2.9	3.7	3.0	2.9	4.3	5.5
	Quintile 2	4.7	4.9	4.7	5.4	9.0	9.2
	Quintile 3	4.1	6.1	6.6	6.3	9.9	11.0
	Quintile 4	7.5	7.0	9.3	9.0	12.7	12.4
	Quintile 5	5.5	9.4	8.3	8.9	12.3	11.6
All placed applicants per 10,000 population	Quintile 1	3.4	4.2	3.2	3.2	4.4	5.6
	Quintile 2	5.3	5.3	5.5	6.2	9.1	9.6
	Quintile 3	5.0	6.5	7.3	6.6	10.0	11.1
	Quintile 4	8.6	8.0	10.0	9.7	13.3	13.0
	Quintile 5	6.5	10.3	9.1	9.6	12.6	12.1

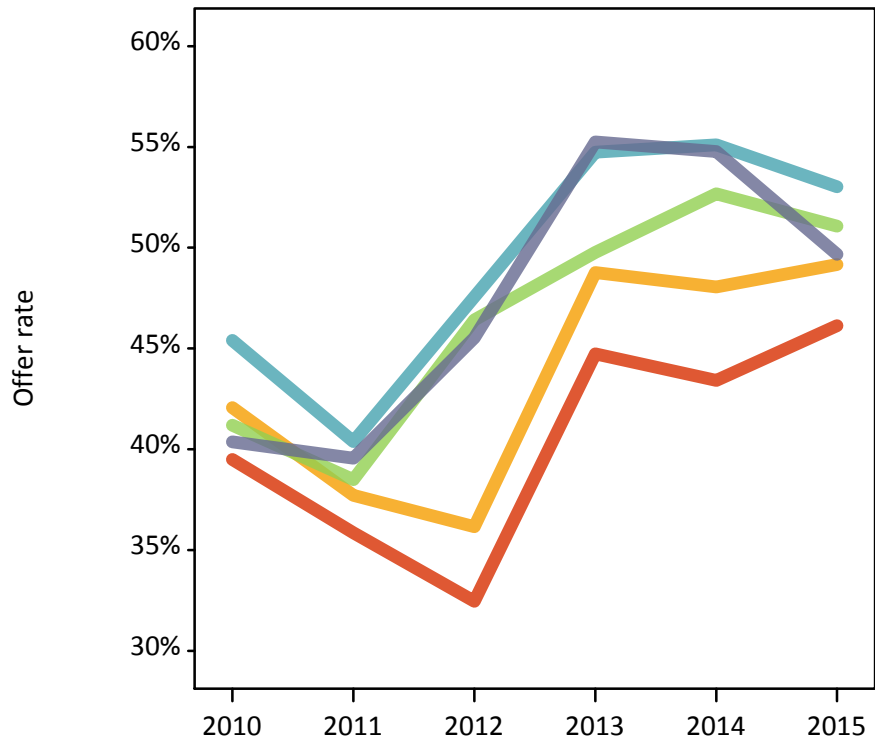
P.8 18 year old applications by POLAR3 quintile

Statistic	POLAR3 quintile	2010	2011	2012	2013	2014	2015
June deadline applications	Quintile 1	195	320	230	190	310	350
	Quintile 2	330	405	365	325	510	540
	Quintile 3	300	515	460	420	540	655
	Quintile 4	465	630	595	505	695	760
	Quintile 5	440	730	560	495	690	755
Offers	Quintile 1	75	115	75	85	135	160
	Quintile 2	140	150	130	160	245	265
	Quintile 3	125	200	215	210	285	335
	Quintile 4	210	255	285	275	385	405
	Quintile 5	180	290	255	275	380	375
Offer rate	Quintile 1	39.5%	35.8%	32.5%	44.7%	43.4%	46.1%
	Quintile 2	42.1%	37.7%	36.2%	48.8%	48.0%	49.2%
	Quintile 3	41.2%	38.5%	46.4%	49.8%	52.7%	51.1%
	Quintile 4	45.4%	40.4%	47.6%	54.7%	55.1%	53.0%
	Quintile 5	40.4%	39.6%	45.5%	55.2%	54.8%	49.7%
Average offer rate	Quintile 1	40.3%	38.3%	40.3%	51.1%	49.3%	50.0%
	Quintile 2	42.9%	36.8%	43.4%	51.1%	51.0%	49.5%
	Quintile 3	40.8%	39.1%	43.6%	51.6%	53.7%	51.4%
	Quintile 4	43.5%	39.6%	44.8%	51.2%	52.3%	50.8%
	Quintile 5	41.7%	39.2%	42.9%	53.3%	51.9%	49.6%
Percentage point difference between offer rate and average offer rate	Quintile 1	-0.8	-2.5	-7.8	-6.3	-5.8	-3.9
	Quintile 2	-0.8	1.0	-7.3	-2.3	-3.0	-0.4
	Quintile 3	0.4	-0.7	2.8	-1.9	-1.0	-0.3
	Quintile 4	1.9	0.8	2.8	3.5	2.8	2.2
	Quintile 5	-1.3	0.3	2.6	1.9	2.8	0.0
Contribution of group to the average offer rate	Quintile 1	0.250	0.222	0.176	0.214	0.207	0.204
	Quintile 2	0.296	0.233	0.258	0.268	0.272	0.257
	Quintile 3	0.277	0.268	0.300	0.296	0.272	0.280
	Quintile 4	0.373	0.302	0.340	0.338	0.325	0.311
	Quintile 5	0.348	0.354	0.350	0.348	0.349	0.323

P.9 18 year old offer rate by POLAR3 quintile

Note: The line for a group is not plotted when that group made fewer than 10 applications in any of the years from 2010-2015.

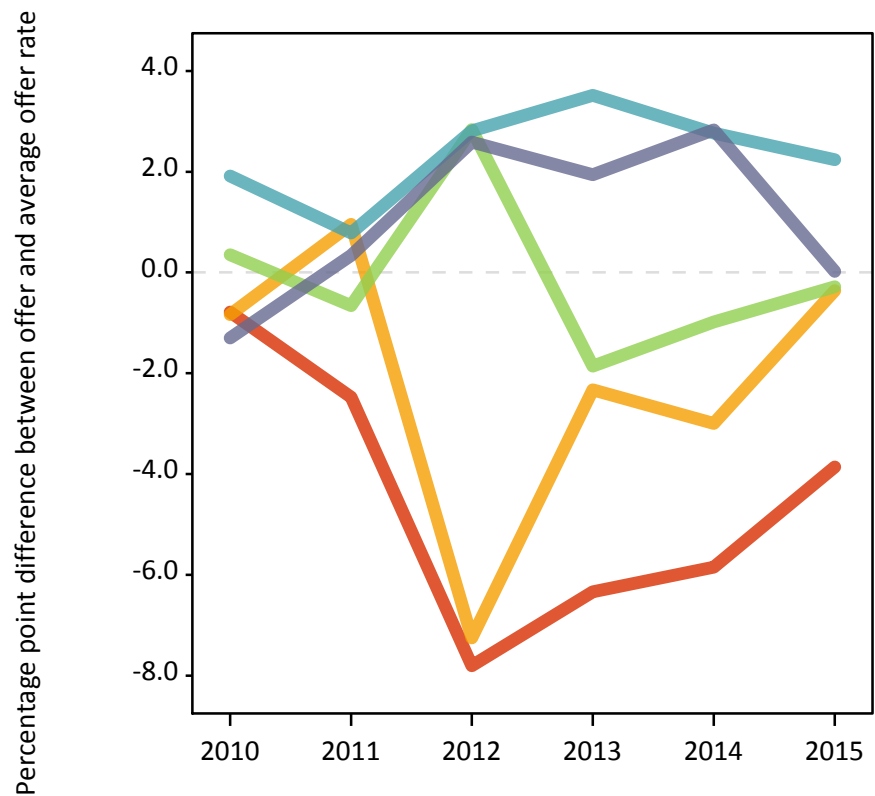
- Quintile 1
- Quintile 2
- Quintile 3
- Quintile 4
- Quintile 5



P.10 Percentage point difference between 18 year old offer rate and average offer rate by POLAR3 quintile

Note: The line for a group is not plotted when that group made fewer than 50 applications in any of the years from 2010-2015.

- Quintile 1
- Quintile 2
- Quintile 3
- Quintile 4
- Quintile 5



P.11 18 year old applicants by ethnic group

Statistic	Ethnic group	2010	2011	2012	2013	2014	2015
June deadline applicants	Asian	15	30	25	15	40	60
	Black	15	25	35	30	55	65
	Mixed	40	80	80	60	100	110
	White	1,560	2,325	1,950	1,720	2,380	2,635
	Other	5	5	5	5	20	10
Placed June deadline applicants	Asian	5	5	5	0	5	10
	Black	0	5	5	5	10	15
	Mixed	5	15	10	10	30	25
	White	380	460	480	485	685	715
	Other	0	0	5	0	0	0
All placed applicants	Asian	5	5	5	0	5	10
	Black	5	5	5	5	10	15
	Mixed	10	15	10	10	30	25
	White	440	505	530	525	705	740
	Other	0	0	5	0	0	0
June deadline applicants per 10,000 population	Asian	2.1	5.1	3.9	2.6	5.8	8.8
	Black	5.7	8.4	12.1	10.4	18.5	20.4
	Mixed	17.3	32.2	29.9	22.6	34.4	35.4
	White	23.3	35.9	30.2	27.4	38.6	42.3
	Other	5.2	7.4	7.9	7.7	20.4	11.4
Placed June deadline applicants per 10,000 population	Asian	0.5	0.6	0.5	0.0	1.0	1.7
	Black	0.0	2.2	1.8	2.0	3.3	4.7
	Mixed	2.2	5.4	3.5	4.1	11.1	8.1
	White	5.7	7.1	7.5	7.7	11.1	11.5
	Other	0.0	0.0	3.4	0.0	0.0	0.0
All placed applicants per 10,000 population	Asian	0.6	0.6	0.8	0.0	1.0	1.7
	Black	1.1	2.6	1.8	2.0	3.6	5.0
	Mixed	3.5	5.8	3.8	4.4	11.1	8.8
	White	6.6	7.8	8.2	8.3	11.4	11.9
	Other	0.0	0.0	3.4	0.0	0.0	0.0

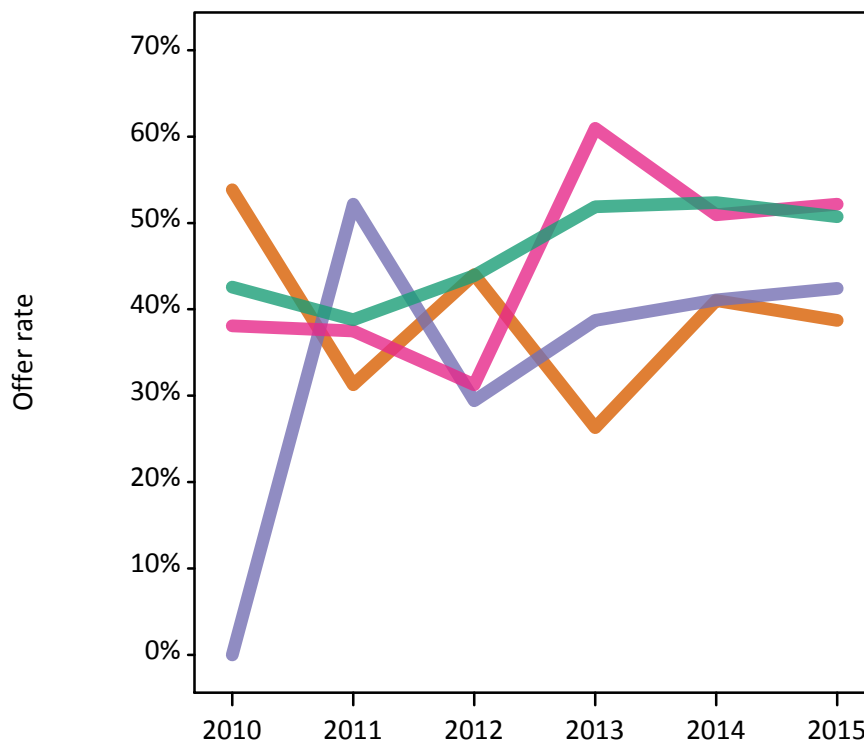
P.12 18 year old applications by ethnic group

Statistic	Ethnic group	2010	2011	2012	2013	2014	2015
June deadline applications	Asian	15	30	25	20	40	60
	Black	15	25	35	30	55	65
	Mixed	40	80	80	65	105	115
	White	1,650	2,450	2,060	1,810	2,530	2,805
	Other	5	5	5	5	20	10
Offers	Asian	5	10	10	5	15	25
	Black	0	10	10	10	25	30
	Mixed	15	30	25	40	55	60
	White	700	950	905	940	1,325	1,425
	Other	0	5	5	5	10	5
Offer rate	Asian	53.8%	31.3%	44.0%	26.3%	41.0%	38.7%
	Black	0.0%	52.2%	29.4%	38.7%	41.1%	42.4%
	Mixed	38.1%	37.5%	31.3%	60.9%	51.0%	52.2%
	White	42.6%	38.8%	43.9%	51.9%	52.4%	50.7%
	Other	N/A	N/A	N/A	N/A	47.4%	45.5%
Average offer rate	Asian	48.8%	33.4%	36.3%	43.2%	53.7%	40.9%
	Black	36.8%	37.2%	32.3%	53.7%	50.7%	47.3%
	Mixed	40.3%	40.9%	43.7%	52.7%	50.6%	50.8%
	White	42.3%	38.9%	43.6%	51.9%	52.0%	50.6%
	Other	N/A	N/A	N/A	N/A	45.5%	49.9%
Percentage point difference between offer rate and average offer rate	Asian	N/A	N/A	N/A	N/A	N/A	-2.2
	Black	N/A	N/A	N/A	N/A	-9.6	-4.9
	Mixed	N/A	-3.4	-12.5	8.3	0.3	1.4
	White	0.3	-0.1	0.3	0.0	0.4	0.1
	Other	N/A	N/A	N/A	N/A	N/A	N/A
Contribution of group to the average offer rate	Asian	0.205	0.058	0.081	0.168	0.141	0.098
	Black	0.189	0.083	0.126	0.099	0.131	0.120
	Mixed	0.222	0.130	0.115	0.153	0.139	0.113
	White	0.958	0.948	0.937	0.941	0.926	0.921
	Other	N/A	N/A	N/A	N/A	0.085	0.080

P.13 18 year old offer rate by ethnic group

Note: The line for a group is not plotted when that group made fewer than 10 applications in any of the years from 2010-2015.

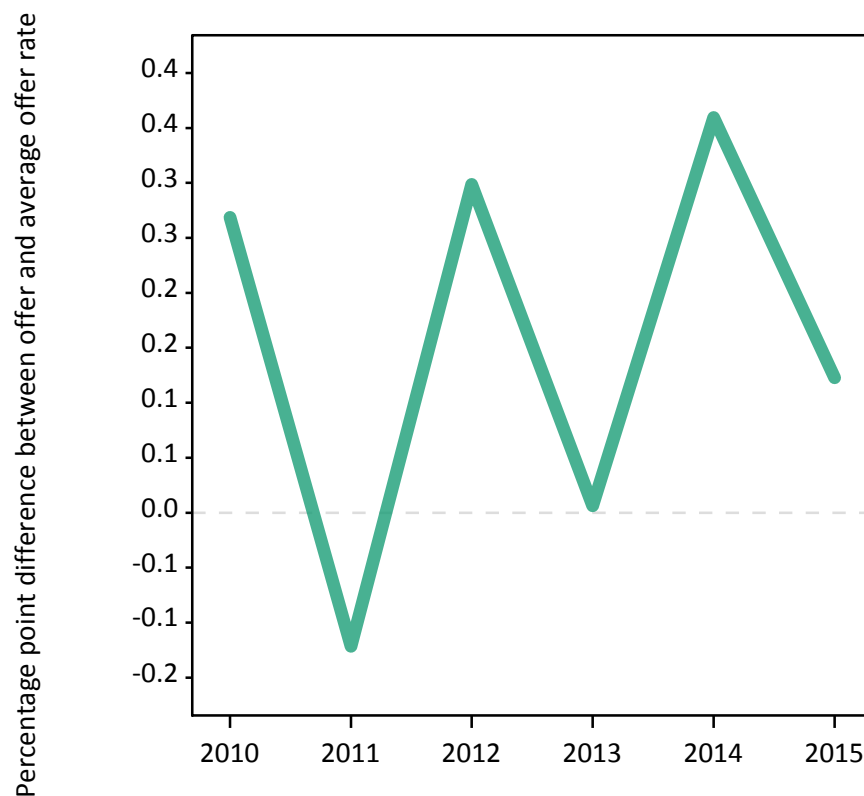
- Asian
- Black
- Mixed
- White
- Other



P.14 Percentage point difference between 18 year old offer rate and average offer rate by ethnic group

Note: The line for a group is not plotted when that group made fewer than 50 applications in any of the years from 2010-2015.

- Asian
- Black
- Mixed
- White
- Other



P.15 Applicants (all ages)

Statistic	2010	2011	2012	2013	2014	2015
June deadline applicants	4,370	5,600	4,570	4,255	5,400	5,660
Placed June deadline applicants	1,125	1,190	1,175	1,170	1,535	1,600
All placed applicants	1,365	1,335	1,335	1,320	1,600	1,685

P.16 Applications (all ages)

Statistic	2010	2011	2012	2013	2014	2015
June deadline applications	4,620	5,905	4,850	4,475	5,740	6,025
Offers	1,905	2,275	2,185	2,280	2,940	3,035
Offer rate	41.3%	38.5%	45.0%	50.9%	51.2%	50.4%

P.17 Applicants (all ages) by sex

Statistic	Sex	2010	2011	2012	2013	2014	2015
June deadline applicants	Men	1,800	2,215	1,700	1,590	1,990	2,155
	Women	2,570	3,385	2,870	2,665	3,410	3,505
Placed June deadline applicants	Men	450	480	445	485	590	620
	Women	675	710	730	685	945	980
All placed applicants	Men	570	540	520	565	620	665
	Women	800	795	815	760	985	1,025

P.18 Applications (all ages) by sex

Statistic	Sex	2010	2011	2012	2013	2014	2015
June deadline applications	Men	1,910	2,335	1,815	1,680	2,125	2,330
	Women	2,710	3,570	3,035	2,800	3,610	3,695
Offers	Men	765	875	850	880	1,070	1,185
	Women	1,145	1,400	1,335	1,400	1,865	1,850
Offer rate	Men	39.9%	37.5%	46.9%	52.4%	50.4%	50.9%
	Women	42.2%	39.2%	44.0%	50.0%	51.7%	50.0%

P.19 Applicants (all ages) by POLAR3 quintile

Statistic	POLAR3 quintile	2010	2011	2012	2013	2014	2015
June deadline applicants	Quintile 1	440	645	515	455	640	655
	Quintile 2	765	925	750	725	995	990
	Quintile 3	815	1,110	925	885	1,070	1,150
	Quintile 4	1,140	1,395	1,185	1,095	1,310	1,430
	Quintile 5	1,190	1,510	1,190	1,085	1,365	1,425
Placed June deadline applicants	Quintile 1	110	135	105	100	145	170
	Quintile 2	195	195	190	195	280	295
	Quintile 3	195	220	225	250	290	330
	Quintile 4	310	300	320	325	390	410
	Quintile 5	310	340	330	300	425	390
All placed applicants	Quintile 1	130	150	120	110	150	180
	Quintile 2	250	220	225	230	295	315
	Quintile 3	235	255	260	275	300	340
	Quintile 4	365	335	355	365	415	435
	Quintile 5	380	375	370	335	440	410

P.20 Applications (all ages) by POLAR3 quintile

Statistic	POLAR3 quintile	2010	2011	2012	2013	2014	2015
June deadline applications	Quintile 1	480	690	540	480	685	695
	Quintile 2	805	985	820	775	1,055	1,070
	Quintile 3	865	1,165	985	925	1,135	1,235
	Quintile 4	1,210	1,470	1,245	1,155	1,415	1,515
	Quintile 5	1,235	1,585	1,255	1,135	1,425	1,490
Offers	Quintile 1	180	250	195	210	285	320
	Quintile 2	320	365	345	375	505	530
	Quintile 3	360	440	445	470	580	640
	Quintile 4	515	585	595	625	775	785
	Quintile 5	525	625	595	595	780	750
Offer rate	Quintile 1	36.9%	36.0%	36.2%	44.1%	41.4%	46.2%
	Quintile 2	39.7%	37.3%	42.4%	48.2%	47.9%	49.4%
	Quintile 3	41.4%	37.8%	45.5%	50.6%	51.2%	51.8%
	Quintile 4	42.7%	39.8%	47.7%	54.2%	55.0%	51.9%
	Quintile 5	42.6%	39.5%	47.6%	52.5%	54.8%	50.3%

P.21 Applicants (all ages) by ethnic group

Statistic	Ethnic group	2010	2011	2012	2013	2014	2015
June deadline applicants	Asian	45	80	65	60	100	120
	Black	35	60	70	70	105	125
	Mixed	120	180	160	145	220	235
	White	4,120	5,220	4,230	3,940	4,905	5,135
	Other	15	20	15	15	35	20
Placed June deadline applicants	Asian	10	5	10	10	15	20
	Black	5	10	15	15	20	25
	Mixed	25	30	30	30	60	60
	White	1,070	1,135	1,110	1,105	1,420	1,485
	Other	5	0	5	5	5	10
All placed applicants	Asian	10	10	15	10	15	25
	Black	15	15	15	15	20	25
	Mixed	35	30	35	35	65	65
	White	1,285	1,265	1,260	1,240	1,485	1,560
	Other	5	5	5	5	5	10

P.22 Applications (all ages) by ethnic group

Statistic	Ethnic group	2010	2011	2012	2013	2014	2015
June deadline applications	Asian	45	80	65	60	100	120
	Black	35	65	75	70	105	130
	Mixed	125	185	170	150	230	245
	White	4,360	5,520	4,500	4,150	5,225	5,480
	Other	15	20	15	15	35	20
Offers	Asian	15	20	30	20	50	50
	Black	10	25	25	30	35	50
	Mixed	50	65	70	75	120	130
	White	1,810	2,140	2,035	2,125	2,700	2,785
	Other	5	10	10	10	15	10
Offer rate	Asian	37.2%	24.7%	47.8%	36.1%	49.0%	40.8%
	Black	27.0%	36.5%	37.0%	41.4%	34.6%	38.5%
	Mixed	40.3%	36.2%	40.8%	50.3%	52.4%	53.3%
	White	41.5%	38.7%	45.3%	51.2%	51.7%	50.8%
	Other	0.0%	45.0%	56.3%	56.3%	45.7%	54.5%

Technical Notes and Definitions

UCAS undergraduate scheme

Adjustment

Adjustment allows applicants who have met and exceeded the terms of their conditional firm offer to seek and find a place at another provider whilst keeping their place at their original firm choice provider.

Clearing

Clearing is a route for applicants that are not placed and holding no offers to find a place on courses with vacancies.

Cycle year

The UCAS application cycle which runs from September to October the following year. For example the 2015 cycle runs from September 2014 through to October 2015.

End of cycle

The point in the cycle to which the numbers in this report refer, and the point at which the cycle is closed such that no more applications or offers can be made, and no more applicants can be placed. Numbers reported at the end of cycle exclude information on a small number of applicants who cancelled during the cycle.

Extra

Applicants who are unsuccessful in obtaining an offer or decline all offers may be eligible to apply through Extra, where they can apply to one further course at a time. Extra operates from 25 February until early July. It provides applicants who are eligible the possibility of obtaining an offer before exam results are published and Clearing starts.

June 30 deadline

The deadline for main scheme applications. Applicants who apply after this date will go directly into Clearing.

Record of Prior Acceptance (RPA)

RPA is an acceptance route used when a provider informs UCAS of applicants it has accepted outside of the normal application process (e.g. individuals who have applied directly to the provider).

Reporting groups

Ethnic group

High level grouping of ethnic origin as declared by the applicant: 'White', 'Black', 'Asian', 'Mixed', 'Other', 'Unknown'. Applicants who declare themselves as 'Unknown' ethnic origin are not reported in these tables, but are included in the associated csv data file.

POLAR3 quintile

Developed by HEFCE, POLAR3 classifies small areas across the UK into five groups according to their level of young participation in Higher Education. Each of these groups represents around 20 per cent of young people and is ranked from Quintile 1 (areas with the lowest young participation rates, considered as the most disadvantaged) to Quintile 5 (highest young participation rates, considered most advantaged). POLAR3 is based on the participation rates of young people between 2005 and 2009 who entered Higher Education between 2005-06 and 2010-11, therefore is most suitable for applicants aged 19 and under. These groups are assigned using the postcode declared by the applicant at the time of their application. If a UK postcode is invalid, considered unsafe for measurement or there is no link to Census geography possible then the applicant is not assigned to a quintile. Applicants with no POLAR3 quintile are not reported.

Sex

Sex as declared by the applicant.

SIMD quintile

Scottish index of multiple deprivation (SIMD) for 2012 identifies small area concentrations of multiple deprivation across all of Scotland, providing a relative measure of deprivation amongst 6505 small areas (data zones) based on 7 socio-economic domains. These small areas are classified into five groups ranked from Quintile 1 (considered the most deprived) to Quintile 5 (considered least deprived), with equal populations in each quintile. Quintiles are assigned using the postcode declared by the applicant, applicants declaring invalid postcodes are classified as 'Not assigned' and are not reported.

SIMD is only defined for applicants domiciled in Scotland, therefore any applicants domiciled outside of Scotland cannot be assigned to an SIMD quintile and so are not reported for this measure.

SIMD is only reported for providers in Scotland. Application and entry rates by SIMD are reported in the 2015 End of Cycle Report and the 2016 cycle January deadline application rate report.

Statistics reported in the tables

All placed applicants

The number of applicants placed for entry into higher education at the provider through one of their choices, including any choices made through Extra, or via Adjustment, Clearing or RPA.

All placed applicants per 10,000 population

The number of total UK domiciled 18 year old placed applicants for entry into higher education at the provider divided by the number of UK 18 year olds in the population, multiplied by 10,000. This gives the number of 18 year olds, for every 10,000 in the population, that were placed at the provider through one of their choices, including any choices made through Extra, or via Adjustment, Clearing or RPA. It is an alternative way of expressing the entry rate to a provider. By referencing the underlying population this statistic shows how the number of placed applicants is changing in relation to the available pool of potential applicants and so gives the chance that somebody from the group will be placed at a provider.

This statistic is only reported for 18 year olds.

Average offer rate

The offer rate that you might expect if the predicted grades and subject choice of applicants were the only factors that influenced whether an applicant was made an offer by the provider. The average offer rate is calculated by dividing applicants according to their specific combination of grades (for A levels the best three predicted grades are used, for BTECs, International Baccalaureate and Scottish Highers and Advanced Highers, predicted grades along with any grades already achieved upon applying are used) and subject choice. For each combination the number of main scheme offers is divided by the number of main scheme applications, to give an overall offer rate. This is then multiplied by the number of applications made by the group for which the average offer rate is being calculated (for example POLAR3 quintile 1), to give an average number of offers for that group. These average number of offers are then added together across all combinations of predicted grade and subject and divided by the number of main scheme applications from the group to give the average offer rate.

The average offer rate does not attempt to control for any other factors that may play a part in the decision to make an offer, such as the subject of the qualifications studied, their relevance to a course, or the grade in each subject; higher numbers of A levels being studied; the exact profile of grades predicted; personal statements; teacher references; interviews; or any other criteria (such as work experience or portfolios) that may be part of the admissions decision.

This statistic is only reported for 18 year olds.

Contribution of group to the average offer rate

The way in which the average offer rate is defined means that the pattern of application and offers of a group (for example POLAR3 quintile 1) will always contribute, in part, to the average offer rate for that group. When this contribution is large, the average offer rate will mainly reflect the patterns for the group, meaning that the value of the average offer rate will be similar to the offer rate, the percentage point difference statistic will be small, and any real difference between the offer rate and what might be expected given the predicted grades and subject choices of the applicants will be difficult to detect.

Values of the contribution of group to the average offer rate range between 0 and 1. The closer the value is to 1 the greater the contribution a group makes to its own average offer rate.

This statistic is only reported for 18 year olds.

Placed June deadline applicants

An applicant who has been placed for entry into higher education at the provider through a June deadline application.

Placed June deadline applicants per 10,000 population

The number of UK domiciled 18 year old placed June deadline applicants at the provider divided by the number of UK 18 year olds in the population, multiplied by 10,000. This gives the number of 18 year olds, for every 10,000 in the population, that were placed at the provider through one of their June deadline applications. It is an alternative way of expressing the entry rate to a provider, but for placed June deadline applicants only. By referencing the underlying population this statistic shows how the number of placed June deadline applicants is changing in relation to the available pool of potential 18 year old applicants and so gives the chance that somebody from the group will be placed at a provider through a June deadline application.

This statistic is only reported for 18 year olds.

June deadline applications

An application (or choice) to a course in higher education to the provider that is made by the June 30 deadline. Each applicant can make up to five choices this way. The number of June deadline applications does not include choices made through the following routes: Clearing, Extra, Adjustment and RPAs. Applications made to October deadline courses received after the October deadline are not included in these statistics.

June deadline applicants

The number of applicants that made at least one application to the provider by the June 30 deadline.

June deadline applicants per 10,000 population

The number of UK domiciled 18 year old June deadline applicants to the provider divided by the number of UK 18 year olds in the population, multiplied by 10,000. This gives the number of 18 year olds, for every 10,000 in the population, who applied by the June 30 deadline. It is equivalent to the application rate. By referencing the underlying population this statistic shows how the number of June deadline applicants is changing in relation to the available pool of potential 18 year old applicants and so gives the chance that somebody from the group will apply to a provider by the June 30 deadline.

This statistic is only reported for 18 year olds.

Offers

An offer is defined as a provider's decision in response to an application to offer a place to an applicant, often subject to the applicant satisfying academic and/or other criteria, via a June deadline application (i.e. does not cover choices made through the following routes: Clearing, Extra, Adjustment and RPAs).

Offer rate

The number of offers made divided by the number of June deadline applications. This gives the proportion of all June deadline applications to the provider that received an offer.

Percentage point difference between offer rate and average offer rate

The offer rate minus the average offer rate.

The percentage point difference can be compared to the expected range of statistical variation resulting from the calculation of the average offer rate using the Average Offer Rate Lookup Table. Where the value of the percentage point difference lies outside of this range, the percentage point difference may be considered to represent a real difference between the offer rate and the average offer rate.

Other definitions

Age

This analysis uses country-specific age definitions that align with the cut off points for school and college cohorts within the different administrations of the UK. For England and Wales, ages are defined on the 31 August, for Northern Ireland on the 1 July and for Scotland on the 28 February the following year. Defining ages in this way matches the assignment of children to school cohorts. For applicants outside of the UK a cohort cut off of 31 August has been used.

Provider

A higher education provider - a university or college.

UK domiciled

Declared area of permanent residence within England, Northern Ireland, Scotland and Wales. Applicants from the Channel Islands and Isle of Man are not included.