

E14 University of East Anglia (UEA)

Cycle years: 2010 - 2015

Cycle Reference Point: End of Cycle

Applicant coverage: UK domiciled

Reporting groups: Sex, POLAR3, ethnic group

Applicant statistics: June deadline applicants, placed June deadline applicants, all placed applicants, June deadline applicants per 10,000 population, placed June deadline applicants per 10,000 population, all placed applicants per 10,000 population

Application statistics: June deadline applications, offers, offer rate, average offer rate, percentage point difference between offer rate and average offer rate, contribution of group to the average offer rate

Non-disclosure controls: To avoid the disclosure of information about any individual the following measures are taken

- Applicants, placed applicants, applications and offers are rounded to the nearest 5.
- Applicants/placed applicants per 10,000 population figures are reported as 0 if the applicant/placed applicant figures are rounded to 0.
- All statistics related to the offer rate are not reported when the number of applications for a group is less than 10. The percentage point difference between the offer rate and the average offer rate is not reported when the number of applications for a group is less than 50.
- Offer rates are reported as 0% if there are fewer than 5 offers, and 100% if the number of offers is within 5 of the number of applications. When the offer rate is reported as 0% or 100%, it is reported in italics.

Contents:

18 year old applicants:	P.1
18 year old applications:	P.2
18 year old applicants by sex:	P.3
18 year old applications by sex:	P.4
18 year old applicants by POLAR3 quintile:	P.7
18 year old applications by POLAR3 quintile:	P.8
18 year old applicants by ethnic group:	P.11
18 year old applications by ethnic group:	P.12
Applicants (all ages):	P.15
Applications (all ages):	P.16
Applicants (all ages) by sex:	P.17
Applications (all ages) by sex:	P.18
Applicants (all ages) by POLAR3 quintile:	P.19
Applications (all ages) by POLAR3 quintile:	P.20
Applicants (all ages) by ethnic group:	P.21
Applications (all ages) by ethnic group:	P.22

P.1 18 year old applicants

Statistic	2010	2011	2012	2013	2014	2015
June deadline applicants	10,275	12,530	10,770	8,610	9,435	11,460
Placed June deadline applicants	1,560	1,560	1,755	1,470	1,265	2,030
All placed applicants	1,645	1,680	1,910	1,605	1,385	2,105
June deadline applicants per 10,000 population	130.1	162.7	139.3	113.1	125.3	149.6
Placed June deadline applicants per 10,000	19.8	20.2	22.7	19.3	16.8	26.5
All placed applicants per 10,000 population	20.8	21.8	24.7	21.1	18.4	27.5

P.2 18 year old applications

Statistic	2010	2011	2012	2013	2014	2015
June deadline applications	10,835	13,100	11,220	8,920	9,810	11,910
Offers	8,195	8,900	8,020	6,840	7,725	9,575
Offer rate	75.6%	67.9%	71.5%	76.7%	78.7%	80.4%

P.3 18 year old applicants by sex

Statistic	Sex	2010	2011	2012	2013	2014	2015
June deadline applicants	Men	4,570	5,505	4,470	3,610	3,995	4,955
	Women	5,705	7,020	6,300	5,000	5,440	6,505
Placed June deadline applicants	Men	710	705	710	605	510	825
	Women	855	855	1,040	865	755	1,205
All placed applicants	Men	750	760	790	670	545	840
	Women	895	920	1,120	935	840	1,260
June deadline applicants per 10,000 population	Men	113.8	139.9	112.7	92.4	103.2	126.3
	Women	147.1	186.5	167.2	135.0	148.6	174.1
Placed June deadline applicants per 10,000 population	Men	17.6	17.9	17.9	15.5	13.2	21.0
	Women	22.0	22.7	27.6	23.3	20.7	32.3
All placed applicants per 10,000 population	Men	18.6	19.3	19.9	17.2	14.1	21.5
	Women	23.1	24.5	29.7	25.3	22.9	33.8

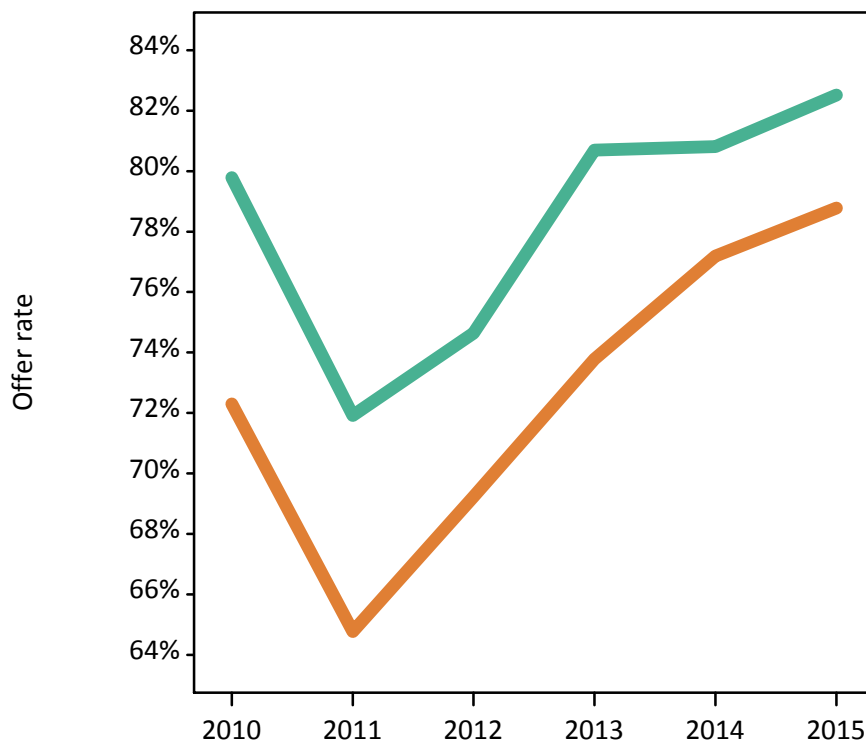
P.4 18 year old applications by sex

Statistic	Sex	2010	2011	2012	2013	2014	2015
June deadline applications	Men	4,825	5,780	4,695	3,745	4,180	5,175
	Women	6,015	7,320	6,520	5,175	5,630	6,735
Offers	Men	3,850	4,155	3,505	3,025	3,375	4,270
	Women	4,350	4,740	4,515	3,820	4,345	5,305
Offer rate	Men	79.8%	71.9%	74.6%	80.7%	80.8%	82.5%
	Women	72.3%	64.8%	69.2%	73.8%	77.2%	78.8%
Average offer rate	Men	80.1%	72.1%	75.2%	81.4%	81.3%	82.8%
	Women	72.0%	64.6%	68.8%	73.3%	76.9%	78.5%
Percentage point difference between offer rate and average offer rate	Men	-0.3	-0.2	-0.5	-0.7	-0.5	-0.3
	Women	0.3	0.2	0.4	0.5	0.3	0.3
Contribution of group to the average offer rate	Men	0.572	0.563	0.565	0.568	0.572	0.578
	Women	0.657	0.655	0.687	0.687	0.683	0.675

P.5 18 year old offer rate by sex

Note: The line for a group is not plotted when that group made fewer than 10 applications in any of the years from 2010-2015.

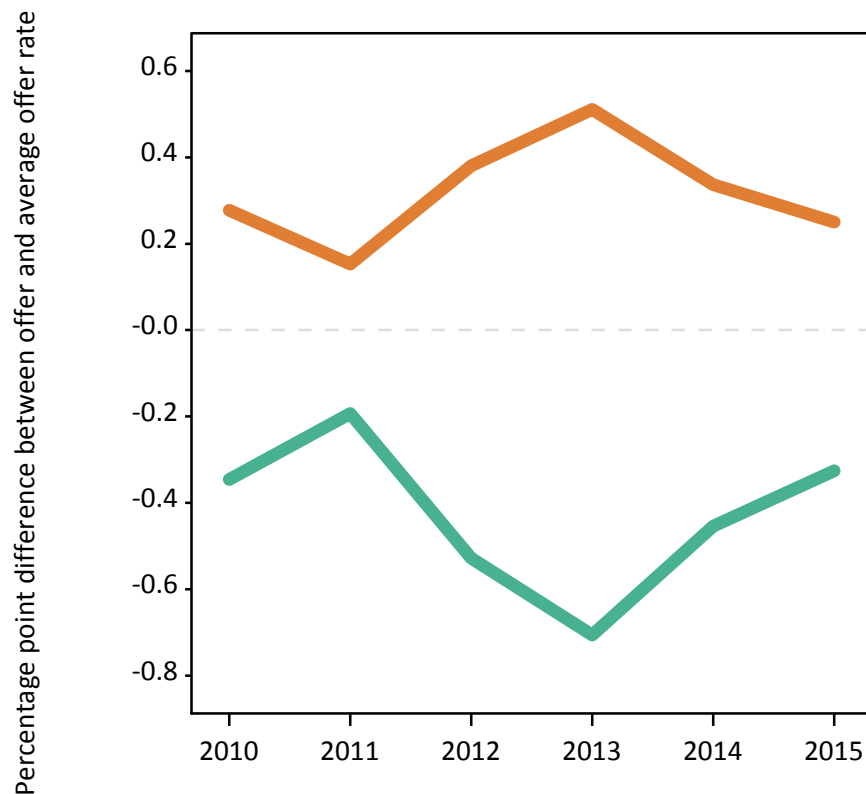
Men
Women



P.6 Percentage point difference between 18 year old offer rate and average offer rate by sex

Note: The line for a group is not plotted when that group made fewer than 50 applications in any of the years from 2010-2015.

Men
Women



P.7 18 year old applicants by POLAR3 quintile

Statistic	POLAR3 quintile	2010	2011	2012	2013	2014	2015
June deadline applicants	Quintile 1	810	950	770	705	760	985
	Quintile 2	1,475	1,705	1,485	1,255	1,375	1,635
	Quintile 3	1,935	2,260	2,000	1,700	1,770	2,265
	Quintile 4	2,695	3,270	2,790	2,210	2,370	2,850
	Quintile 5	3,340	4,320	3,710	2,735	3,140	3,695
Placed June deadline applicants	Quintile 1	120	105	105	115	120	185
	Quintile 2	235	225	260	220	195	320
	Quintile 3	305	275	325	295	225	380
	Quintile 4	405	425	485	390	360	500
	Quintile 5	500	525	570	445	360	645
All placed applicants	Quintile 1	125	115	125	120	130	190
	Quintile 2	240	235	290	245	215	335
	Quintile 3	325	300	340	325	255	390
	Quintile 4	420	450	530	425	390	520
	Quintile 5	535	575	620	490	390	660
June deadline applicants per 10,000 population	Quintile 1	54.7	66.2	54.2	50.4	54.5	70.3
	Quintile 2	95.9	113.3	99.1	85.1	93.8	110.1
	Quintile 3	121.8	146.7	129.5	111.4	117.5	147.4
	Quintile 4	169.3	208.7	175.7	141.4	153.9	182.2
	Quintile 5	197.0	261.1	220.7	165.3	192.5	220.8
Placed June deadline applicants per 10,000 population	Quintile 1	8.0	7.2	7.5	8.2	8.7	13.2
	Quintile 2	15.3	15.0	17.5	15.0	13.5	21.4
	Quintile 3	19.2	18.0	20.9	19.4	14.9	24.7
	Quintile 4	25.3	27.1	30.6	25.0	23.5	31.9
	Quintile 5	29.4	31.7	34.0	27.0	22.0	38.5
All placed applicants per 10,000 population	Quintile 1	8.6	8.0	8.6	8.8	9.3	13.6
	Quintile 2	15.7	15.6	19.4	16.6	14.7	22.5
	Quintile 3	20.3	19.5	22.0	21.4	16.8	25.4
	Quintile 4	26.4	28.7	33.3	27.0	25.4	33.3
	Quintile 5	31.4	34.9	37.0	29.6	24.0	39.5

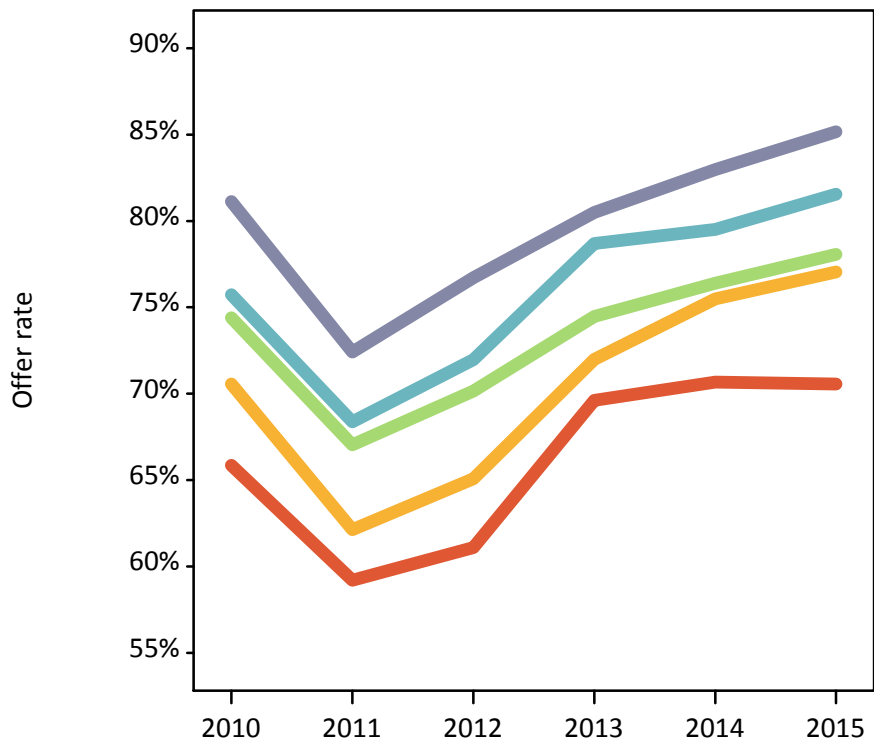
P.8 18 year old applications by POLAR3 quintile

Statistic	POLAR3 quintile	2010	2011	2012	2013	2014	2015
June deadline applications	Quintile 1	870	1,015	820	735	800	1,045
	Quintile 2	1,605	1,825	1,565	1,325	1,450	1,710
	Quintile 3	2,060	2,365	2,085	1,770	1,840	2,355
	Quintile 4	2,820	3,405	2,900	2,280	2,465	2,965
	Quintile 5	3,465	4,465	3,825	2,805	3,230	3,805
Offers	Quintile 1	575	600	500	510	565	735
	Quintile 2	1,135	1,135	1,020	955	1,095	1,320
	Quintile 3	1,530	1,585	1,465	1,320	1,405	1,835
	Quintile 4	2,135	2,330	2,085	1,795	1,960	2,420
	Quintile 5	2,810	3,230	2,935	2,255	2,680	3,240
Offer rate	Quintile 1	65.9%	59.2%	61.1%	69.6%	70.7%	70.6%
	Quintile 2	70.6%	62.1%	65.1%	72.0%	75.5%	77.0%
	Quintile 3	74.4%	67.0%	70.1%	74.5%	76.4%	78.1%
	Quintile 4	75.7%	68.4%	72.0%	78.7%	79.5%	81.6%
	Quintile 5	81.1%	72.4%	76.7%	80.5%	83.0%	85.2%
Average offer rate	Quintile 1	67.5%	60.2%	63.8%	70.3%	71.5%	73.5%
	Quintile 2	71.4%	63.4%	65.0%	73.9%	75.7%	77.3%
	Quintile 3	74.7%	67.0%	70.4%	74.6%	77.1%	78.4%
	Quintile 4	75.5%	68.4%	71.8%	78.5%	79.4%	81.2%
	Quintile 5	80.3%	71.6%	76.2%	79.5%	82.4%	84.3%
Percentage point difference between offer rate and average offer rate	Quintile 1	-1.6	-1.0	-2.7	-0.7	-0.8	-2.9
	Quintile 2	-0.8	-1.3	0.1	-1.9	-0.2	-0.2
	Quintile 3	-0.3	0.0	-0.2	-0.1	-0.7	-0.4
	Quintile 4	0.2	-0.1	0.2	0.2	0.1	0.3
	Quintile 5	0.8	0.8	0.5	1.0	0.6	0.9
Contribution of group to the average offer rate	Quintile 1	0.184	0.173	0.169	0.189	0.178	0.181
	Quintile 2	0.233	0.213	0.218	0.243	0.239	0.214
	Quintile 3	0.249	0.236	0.250	0.271	0.262	0.257
	Quintile 4	0.319	0.310	0.313	0.321	0.316	0.299
	Quintile 5	0.394	0.400	0.402	0.390	0.402	0.386

P.9 18 year old offer rate by POLAR3 quintile

Note: The line for a group is not plotted when that group made fewer than 10 applications in any of the years from 2010-2015.

- Quintile 1
- Quintile 2
- Quintile 3
- Quintile 4
- Quintile 5



P.10 Percentage point difference between 18 year old offer rate and average offer rate by POLAR3 quintile

Note: The line for a group is not plotted when that group made fewer than 50 applications in any of the years from 2010-2015.

- Quintile 1
- Quintile 2
- Quintile 3
- Quintile 4
- Quintile 5



P.11 18 year old applicants by ethnic group

Statistic	Ethnic group	2010	2011	2012	2013	2014	2015
June deadline applicants	Asian	750	910	805	720	800	1,070
	Black	425	580	525	455	545	740
	Mixed	360	485	430	335	400	485
	White	8,610	10,390	8,850	6,960	7,510	8,955
	Other	60	105	100	95	130	150
Placed June deadline applicants	Asian	40	60	85	65	70	85
	Black	40	60	50	50	45	70
	Mixed	55	55	65	40	45	90
	White	1,405	1,370	1,540	1,300	1,095	1,760
	Other	10	5	10	5	10	15
All placed applicants	Asian	55	85	100	90	90	95
	Black	50	75	65	65	60	85
	Mixed	60	60	70	55	45	90
	White	1,465	1,445	1,650	1,385	1,170	1,805
	Other	10	5	15	5	10	15
June deadline applicants per 10,000 population	Asian	121.5	144.2	124.5	109.2	118.1	150.9
	Black	161.6	212.5	186.4	153.3	179.5	233.2
	Mixed	154.5	199.4	164.3	123.5	139.0	156.7
	White	128.4	160.5	137.1	110.6	121.7	143.7
	Other	80.5	128.4	115.3	105.9	138.6	153.7
Placed June deadline applicants per 10,000 population	Asian	6.8	9.7	12.8	10.0	10.5	11.9
	Black	16.0	21.9	17.4	17.5	14.8	22.0
	Mixed	23.7	22.3	24.2	15.5	14.9	28.9
	White	21.0	21.1	23.8	20.7	17.7	28.2
	Other	13.0	4.9	11.3	5.5	10.7	17.7
All placed applicants per 10,000 population	Asian	8.7	13.6	15.4	13.8	13.0	13.6
	Black	19.5	26.7	23.1	22.2	20.5	26.7
	Mixed	25.0	24.4	26.1	19.6	16.3	29.8
	White	21.9	22.3	25.6	22.0	19.0	28.9
	Other	13.0	6.2	14.7	7.7	11.8	17.7

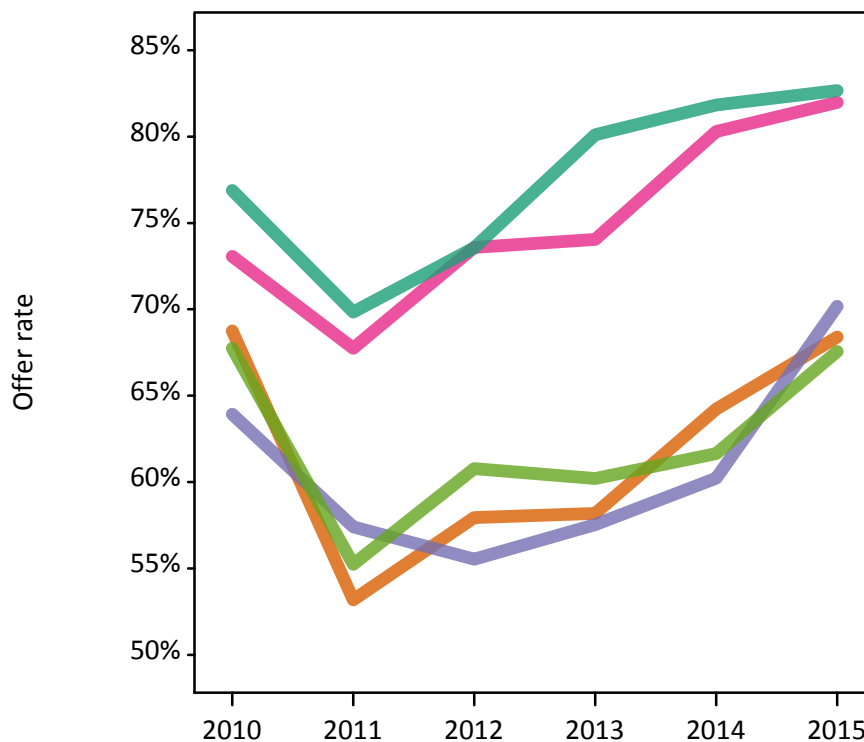
P.12 18 year old applications by ethnic group

Statistic	Ethnic group	2010	2011	2012	2013	2014	2015
June deadline applications	Asian	770	925	830	725	810	1,075
	Black	425	585	535	465	560	750
	Mixed	375	495	445	340	405	495
	White	9,130	10,920	9,250	7,250	7,850	9,375
	Other	60	105	100	100	135	150
Offers	Asian	530	495	480	425	520	735
	Black	275	335	295	265	335	525
	Mixed	275	335	325	250	325	405
	White	7,020	7,625	6,805	5,810	6,425	7,750
	Other	40	60	60	60	80	100
Offer rate	Asian	68.8%	53.2%	58.0%	58.2%	64.2%	68.4%
	Black	63.9%	57.4%	55.5%	57.5%	60.2%	70.2%
	Mixed	73.1%	67.7%	73.6%	74.0%	80.3%	82.0%
	White	76.9%	69.8%	73.6%	80.1%	81.8%	82.7%
	Other	67.7%	55.2%	60.8%	60.2%	61.7%	67.6%
Average offer rate	Asian	70.5%	56.8%	61.2%	60.0%	66.4%	70.7%
	Black	64.9%	58.3%	59.2%	60.4%	63.1%	72.9%
	Mixed	72.8%	68.4%	73.3%	75.4%	78.8%	81.0%
	White	76.7%	69.4%	73.1%	79.7%	81.4%	82.2%
	Other	69.2%	61.7%	63.7%	62.2%	66.2%	70.5%
Percentage point difference between offer rate and average offer rate	Asian	-1.8	-3.7	-3.3	-1.8	-2.2	-2.3
	Black	-0.9	-0.9	-3.7	-2.9	-2.9	-2.7
	Mixed	0.2	-0.7	0.3	-1.3	1.5	1.0
	White	0.2	0.4	0.5	0.5	0.5	0.4
	Other	-1.5	-6.5	-2.9	-2.0	-4.6	-2.9
Contribution of group to the average offer rate	Asian	0.261	0.233	0.226	0.262	0.247	0.232
	Black	0.188	0.168	0.166	0.190	0.210	0.171
	Mixed	0.124	0.115	0.117	0.128	0.148	0.115
	White	0.879	0.867	0.857	0.859	0.848	0.825
	Other	0.075	0.089	0.097	0.146	0.105	0.084

P.13 18 year old offer rate by ethnic group

Note: The line for a group is not plotted when that group made fewer than 10 applications in any of the years from 2010-2015.

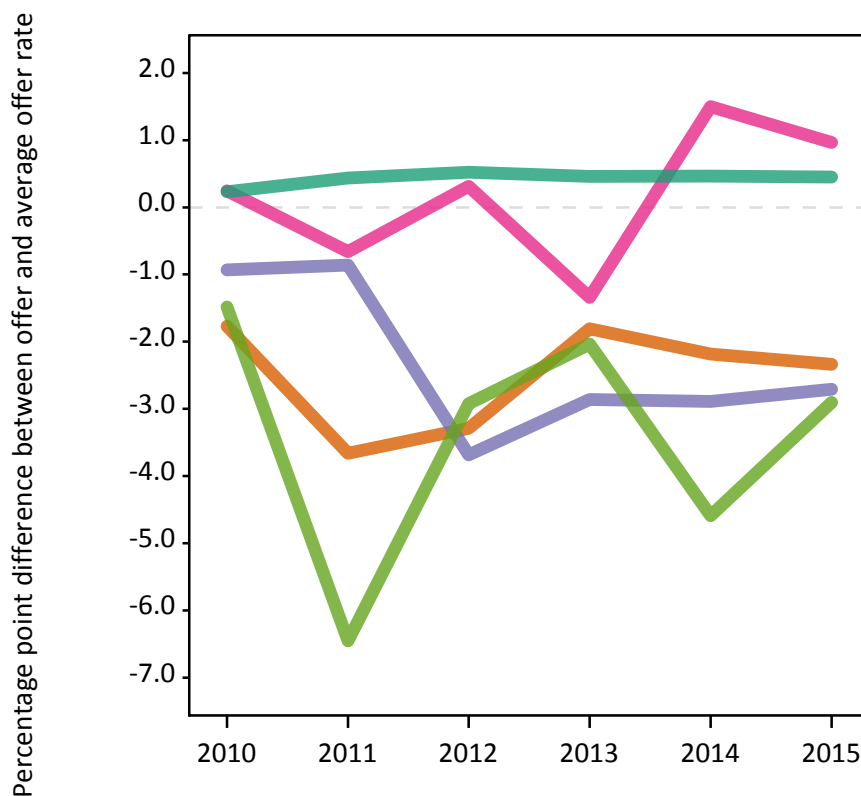
- Asian
- Black
- Mixed
- White
- Other



P.14 Percentage point difference between 18 year old offer rate and average offer rate by ethnic group

Note: The line for a group is not plotted when that group made fewer than 50 applications in any of the years from 2010-2015.

- Asian
- Black
- Mixed
- White
- Other



P.15 Applicants (all ages)

Statistic	2010	2011	2012	2013	2014	2015
June deadline applicants	16,390	19,475	16,200	13,780	15,200	17,840
Placed June deadline applicants	2,575	2,490	2,560	2,380	2,260	3,145
All placed applicants	2,785	2,735	2,875	2,645	2,545	3,355

P.16 Applications (all ages)

Statistic	2010	2011	2012	2013	2014	2015
June deadline applications	17,645	20,745	17,105	14,530	16,140	18,810
Offers	11,215	11,945	10,455	9,500	10,870	13,220
Offer rate	63.6%	57.6%	61.1%	65.4%	67.3%	70.3%

P.17 Applicants (all ages) by sex

Statistic	Sex	2010	2011	2012	2013	2014	2015
June deadline applicants	Men	7,225	8,570	6,715	5,745	6,435	7,730
	Women	9,165	10,905	9,485	8,035	8,770	10,110
Placed June deadline applicants	Men	1,125	1,130	1,040	955	895	1,275
	Women	1,450	1,360	1,520	1,425	1,365	1,870
All placed applicants	Men	1,200	1,230	1,165	1,070	975	1,345
	Women	1,585	1,500	1,710	1,575	1,570	2,010

P.18 Applications (all ages) by sex

Statistic	Sex	2010	2011	2012	2013	2014	2015
June deadline applications	Men	7,760	9,115	7,115	6,055	6,805	8,160
	Women	9,885	11,630	9,990	8,470	9,335	10,645
Offers	Men	5,315	5,690	4,680	4,240	4,790	5,980
	Women	5,900	6,255	5,775	5,260	6,080	7,240
Offer rate	Men	68.5%	62.5%	65.8%	70.0%	70.4%	73.3%
	Women	59.7%	53.8%	57.8%	62.1%	65.1%	68.0%

P.19 Applicants (all ages) by POLAR3 quintile

Statistic	POLAR3 quintile	2010	2011	2012	2013	2014	2015
June deadline applicants	Quintile 1	1,650	1,880	1,545	1,420	1,550	1,870
	Quintile 2	2,570	2,865	2,420	2,155	2,350	2,720
	Quintile 3	3,080	3,575	3,020	2,740	2,955	3,440
	Quintile 4	4,075	4,870	3,980	3,390	3,680	4,335
	Quintile 5	4,970	6,235	5,205	4,055	4,620	5,410
Placed June deadline applicants	Quintile 1	265	245	225	250	280	365
	Quintile 2	420	390	405	395	390	515
	Quintile 3	490	435	465	450	405	570
	Quintile 4	630	620	675	610	595	740
	Quintile 5	765	795	790	680	575	945
All placed applicants	Quintile 1	290	280	265	285	320	395
	Quintile 2	455	420	470	445	445	555
	Quintile 3	530	475	510	495	465	610
	Quintile 4	665	680	750	665	670	795
	Quintile 5	835	875	875	750	645	990

P.20 Applications (all ages) by POLAR3 quintile

Statistic	POLAR3 quintile	2010	2011	2012	2013	2014	2015
June deadline applications	Quintile 1	1,860	2,100	1,695	1,555	1,725	2,080
	Quintile 2	2,870	3,165	2,605	2,295	2,560	2,905
	Quintile 3	3,320	3,785	3,170	2,890	3,140	3,595
	Quintile 4	4,330	5,135	4,190	3,555	3,885	4,550
	Quintile 5	5,215	6,515	5,405	4,215	4,790	5,615
Offers	Quintile 1	895	955	770	815	990	1,200
	Quintile 2	1,620	1,605	1,375	1,390	1,585	1,915
	Quintile 3	2,075	2,105	1,880	1,800	2,035	2,465
	Quintile 4	2,875	3,055	2,660	2,450	2,690	3,290
	Quintile 5	3,725	4,200	3,750	3,035	3,540	4,310
Offer rate	Quintile 1	48.1%	45.5%	45.5%	52.4%	57.4%	57.8%
	Quintile 2	56.5%	50.7%	52.8%	60.5%	62.0%	65.9%
	Quintile 3	62.5%	55.6%	59.3%	62.3%	64.7%	68.6%
	Quintile 4	66.4%	59.5%	63.4%	68.9%	69.3%	72.4%
	Quintile 5	71.5%	64.5%	69.4%	72.0%	73.9%	76.8%

P.21 Applicants (all ages) by ethnic group

Statistic	Ethnic group	2010	2011	2012	2013	2014	2015
June deadline applicants	Asian	1,455	1,685	1,395	1,300	1,490	1,835
	Black	935	1,255	1,085	985	1,165	1,450
	Mixed	615	740	650	545	655	795
	White	13,075	15,440	12,735	10,670	11,565	13,345
	Other	160	190	205	180	205	270
Placed June deadline applicants	Asian	95	105	140	125	120	145
	Black	70	90	80	85	100	115
	Mixed	100	80	90	75	80	140
	White	2,280	2,185	2,210	2,075	1,930	2,700
	Other	20	5	20	10	15	30
All placed applicants	Asian	115	145	170	160	155	165
	Black	80	110	105	110	135	145
	Mixed	105	90	100	90	90	145
	White	2,420	2,325	2,425	2,245	2,120	2,840
	Other	25	20	25	15	20	30

P.22 Applications (all ages) by ethnic group

Statistic	Ethnic group	2010	2011	2012	2013	2014	2015
June deadline applications	Asian	1,500	1,725	1,430	1,320	1,530	1,855
	Black	980	1,305	1,120	1,020	1,205	1,485
	Mixed	650	765	675	565	680	825
	White	14,180	16,565	13,535	11,330	12,395	14,220
	Other	170	195	210	185	215	275
Offers	Asian	805	745	715	670	785	1,105
	Black	435	485	445	410	550	785
	Mixed	400	455	435	360	480	585
	White	9,410	10,080	8,680	7,910	8,870	10,480
	Other	75	85	100	95	115	160
Offer rate	Asian	53.6%	43.0%	49.8%	50.6%	51.4%	59.7%
	Black	44.1%	37.0%	39.8%	40.2%	45.8%	53.0%
	Mixed	61.5%	59.7%	64.5%	64.0%	70.7%	71.2%
	White	66.4%	60.9%	64.1%	69.8%	71.5%	73.7%
	Other	44.2%	44.6%	46.9%	50.5%	53.5%	59.1%

Technical Notes and Definitions

UCAS undergraduate scheme

Adjustment

Adjustment allows applicants who have met and exceeded the terms of their conditional firm offer to seek and find a place at another provider whilst keeping their place at their original firm choice provider.

Clearing

Clearing is a route for applicants that are not placed and holding no offers to find a place on courses with vacancies.

Cycle year

The UCAS application cycle which runs from September to October the following year. For example the 2015 cycle runs from September 2014 through to October 2015.

End of cycle

The point in the cycle to which the numbers in this report refer, and the point at which the cycle is closed such that no more applications or offers can be made, and no more applicants can be placed. Numbers reported at the end of cycle exclude information on a small number of applicants who cancelled during the cycle.

Extra

Applicants who are unsuccessful in obtaining an offer or decline all offers may be eligible to apply through Extra, where they can apply to one further course at a time. Extra operates from 25 February until early July. It provides applicants who are eligible the possibility of obtaining an offer before exam results are published and Clearing starts.

June 30 deadline

The deadline for main scheme applications. Applicants who apply after this date will go directly into Clearing.

Record of Prior Acceptance (RPA)

RPA is an acceptance route used when a provider informs UCAS of applicants it has accepted outside of the normal application process (e.g. individuals who have applied directly to the provider).

Reporting groups

Ethnic group

High level grouping of ethnic origin as declared by the applicant: 'White', 'Black', 'Asian', 'Mixed', 'Other', 'Unknown'. Applicants who declare themselves as 'Unknown' ethnic origin are not reported in these tables, but are included in the associated csv data file.

POLAR3 quintile

Developed by HEFCE, POLAR3 classifies small areas across the UK into five groups according to their level of young participation in Higher Education. Each of these groups represents around 20 per cent of young people and is ranked from Quintile 1 (areas with the lowest young participation rates, considered as the most disadvantaged) to Quintile 5 (highest young participation rates, considered most advantaged). POLAR3 is based on the participation rates of young people between 2005 and 2009 who entered Higher Education between 2005-06 and 2010-11, therefore is most suitable for applicants aged 19 and under. These groups are assigned using the postcode declared by the applicant at the time of their application. If a UK postcode is invalid, considered unsafe for measurement or there is no link to Census geography possible then the applicant is not assigned to a quintile. Applicants with no POLAR3 quintile are not reported.

Sex

Sex as declared by the applicant.

SIMD quintile

Scottish index of multiple deprivation (SIMD) for 2012 identifies small area concentrations of multiple deprivation across all of Scotland, providing a relative measure of deprivation amongst 6505 small areas (data zones) based on 7 socio-economic domains. These small areas are classified into five groups ranked from Quintile 1 (considered the most deprived) to Quintile 5 (considered least deprived), with equal populations in each quintile. Quintiles are assigned using the postcode declared by the applicant, applicants declaring invalid postcodes are classified as 'Not assigned' and are not reported.

SIMD is only defined for applicants domiciled in Scotland, therefore any applicants domiciled outside of Scotland cannot be assigned to an SIMD quintile and so are not reported for this measure.

SIMD is only reported for providers in Scotland. Application and entry rates by SIMD are reported in the 2015 End of Cycle Report and the 2016 cycle January deadline application rate report.

Statistics reported in the tables

All placed applicants

The number of applicants placed for entry into higher education at the provider through one of their choices, including any choices made through Extra, or via Adjustment, Clearing or RPA.

All placed applicants per 10,000 population

The number of total UK domiciled 18 year old placed applicants for entry into higher education at the provider divided by the number of UK 18 year olds in the population, multiplied by 10,000. This gives the number of 18 year olds, for every 10,000 in the population, that were placed at the provider through one of their choices, including any choices made through Extra, or via Adjustment, Clearing or RPA. It is an alternative way of expressing the entry rate to a provider. By referencing the underlying population this statistic shows how the number of placed applicants is changing in relation to the available pool of potential applicants and so gives the chance that somebody from the group will be placed at a provider.

This statistic is only reported for 18 year olds.

Average offer rate

The offer rate that you might expect if the predicted grades and subject choice of applicants were the only factors that influenced whether an applicant was made an offer by the provider. The average offer rate is calculated by dividing applicants according to their specific combination of grades (for A levels the best three predicted grades are used, for BTECs, International Baccalaureate and Scottish Highers and Advanced Highers, predicted grades along with any grades already achieved upon applying are used) and subject choice. For each combination the number of main scheme offers is divided by the number of main scheme applications, to give an overall offer rate. This is then multiplied by the number of applications made by the group for which the average offer rate is being calculated (for example POLAR3 quintile 1), to give an average number of offers for that group. These average number of offers are then added together across all combinations of predicted grade and subject and divided by the number of main scheme applications from the group to give the average offer rate.

The average offer rate does not attempt to control for any other factors that may play a part in the decision to make an offer, such as the subject of the qualifications studied, their relevance to a course, or the grade in each subject; higher numbers of A levels being studied; the exact profile of grades predicted; personal statements; teacher references; interviews; or any other criteria (such as work experience or portfolios) that may be part of the admissions decision.

This statistic is only reported for 18 year olds.

Contribution of group to the average offer rate

The way in which the average offer rate is defined means that the pattern of application and offers of a group (for example POLAR3 quintile 1) will always contribute, in part, to the average offer rate for that group. When this contribution is large, the average offer rate will mainly reflect the patterns for the group, meaning that the value of the average offer rate will be similar to the offer rate, the percentage point difference statistic will be small, and any real difference between the offer rate and what might be expected given the predicted grades and subject choices of the applicants will be difficult to detect.

Values of the contribution of group to the average offer rate range between 0 and 1. The closer the value is to 1 the greater the contribution a group makes to its own average offer rate.

This statistic is only reported for 18 year olds.

Placed June deadline applicants

An applicant who has been placed for entry into higher education at the provider through a June deadline application.

Placed June deadline applicants per 10,000 population

The number of UK domiciled 18 year old placed June deadline applicants at the provider divided by the number of UK 18 year olds in the population, multiplied by 10,000. This gives the number of 18 year olds, for every 10,000 in the population, that were placed at the provider through one of their June deadline applications. It is an alternative way of expressing the entry rate to a provider, but for placed June deadline applicants only. By referencing the underlying population this statistic shows how the number of placed June deadline applicants is changing in relation to the available pool of potential 18 year old applicants and so gives the chance that somebody from the group will be placed at a provider through a June deadline application.

This statistic is only reported for 18 year olds.

June deadline applications

An application (or choice) to a course in higher education to the provider that is made by the June 30 deadline. Each applicant can make up to five choices this way. The number of June deadline applications does not include choices made through the following routes: Clearing, Extra, Adjustment and RPAs. Applications made to October deadline courses received after the October deadline are not included in these statistics.

June deadline applicants

The number of applicants that made at least one application to the provider by the June 30 deadline.

June deadline applicants per 10,000 population

The number of UK domiciled 18 year old June deadline applicants to the provider divided by the number of UK 18 year olds in the population, multiplied by 10,000. This gives the number of 18 year olds, for every 10,000 in the population, who applied by the June 30 deadline. It is equivalent to the application rate. By referencing the underlying population this statistic shows how the number of June deadline applicants is changing in relation to the available pool of potential 18 year old applicants and so gives the chance that somebody from the group will apply to a provider by the June 30 deadline.

This statistic is only reported for 18 year olds.

Offers

An offer is defined as a provider's decision in response to an application to offer a place to an applicant, often subject to the applicant satisfying academic and/or other criteria, via a June deadline application (i.e. does not cover choices made through the following routes: Clearing, Extra, Adjustment and RPAs).

Offer rate

The number of offers made divided by the number of June deadline applications. This gives the proportion of all June deadline applications to the provider that received an offer.

Percentage point difference between offer rate and average offer rate

The offer rate minus the average offer rate.

The percentage point difference can be compared to the expected range of statistical variation resulting from the calculation of the average offer rate using the Average Offer Rate Lookup Table. Where the value of the percentage point difference lies outside of this range, the percentage point difference may be considered to represent a real difference between the offer rate and the average offer rate.

Other definitions

Age

This analysis uses country-specific age definitions that align with the cut off points for school and college cohorts within the different administrations of the UK. For England and Wales, ages are defined on the 31 August, for Northern Ireland on the 1 July and for Scotland on the 28 February the following year. Defining ages in this way matches the assignment of children to school cohorts. For applicants outside of the UK a cohort cut off of 31 August has been used.

Provider

A higher education provider - a university or college.

UK domiciled

Declared area of permanent residence within England, Northern Ireland, Scotland and Wales. Applicants from the Channel Islands and Isle of Man are not included.