

E70 The University of Essex

Cycle years: 2010 - 2015

Cycle Reference Point: End of Cycle

Applicant coverage: UK domiciled

Reporting groups: Sex, POLAR3, ethnic group

Applicant statistics: June deadline applicants, placed June deadline applicants, all placed applicants, June deadline applicants per 10,000 population, placed June deadline applicants per 10,000 population, all placed applicants per 10,000 population

Application statistics: June deadline applications, offers, offer rate, average offer rate, percentage point difference between offer rate and average offer rate, contribution of group to the average offer rate

Non-disclosure controls: To avoid the disclosure of information about any individual the following measures are taken

- Applicants, placed applicants, applications and offers are rounded to the nearest 5.
- Applicants/placed applicants per 10,000 population figures are reported as 0 if the applicant/placed applicant figures are rounded to 0.
- All statistics related to the offer rate are not reported when the number of applications for a group is less than 10. The percentage point difference between the offer rate and the average offer rate is not reported when the number of applications for a group is less than 50.
- Offer rates are reported as 0% if there are fewer than 5 offers, and 100% if the number of offers is within 5 of the number of applications. When the offer rate is reported as 0% or 100%, it is reported in italics.

Contents:

18 year old applicants:	P.1
18 year old applications:	P.2
18 year old applicants by sex:	P.3
18 year old applications by sex:	P.4
18 year old applicants by POLAR3 quintile:	P.7
18 year old applications by POLAR3 quintile:	P.8
18 year old applicants by ethnic group:	P.11
18 year old applications by ethnic group:	P.12
Applicants (all ages):	P.15
Applications (all ages):	P.16
Applicants (all ages) by sex:	P.17
Applications (all ages) by sex:	P.18
Applicants (all ages) by POLAR3 quintile:	P.19
Applications (all ages) by POLAR3 quintile:	P.20
Applicants (all ages) by ethnic group:	P.21
Applications (all ages) by ethnic group:	P.22

P.1 18 year old applicants

Statistic	2010	2011	2012	2013	2014	2015
June deadline applicants	5,995	6,320	7,150	7,100	5,840	7,365
Placed June deadline applicants	935	920	870	920	950	1,145
All placed applicants	1,095	1,105	1,095	1,140	1,405	1,455
June deadline applicants per 10,000 population	76.0	82.1	92.5	93.3	77.6	96.1
Placed June deadline applicants per 10,000	11.8	11.9	11.3	12.1	12.6	15.0
All placed applicants per 10,000 population	13.9	14.3	14.2	15.0	18.7	19.0

P.2 18 year old applications

Statistic	2010	2011	2012	2013	2014	2015
June deadline applications	6,285	6,585	7,445	7,370	6,070	7,610
Offers	5,355	5,385	5,730	5,480	4,470	5,685
Offer rate	85.2%	81.8%	77.0%	74.4%	73.6%	74.7%

P.3 18 year old applicants by sex

Statistic	Sex	2010	2011	2012	2013	2014	2015
June deadline applicants	Men	2,925	3,190	3,355	3,255	2,705	3,570
	Women	3,075	3,130	3,800	3,845	3,140	3,795
Placed June deadline applicants	Men	450	475	420	435	445	565
	Women	485	445	450	490	505	585
All placed applicants	Men	520	550	535	550	685	720
	Women	575	555	560	595	720	740
June deadline applicants per 10,000 population	Men	72.8	81.1	84.5	83.3	69.8	91.0
	Women	79.3	83.1	100.8	103.7	85.8	101.5
Placed June deadline applicants per 10,000 population	Men	11.2	12.1	10.6	11.1	11.5	14.3
	Women	12.5	11.8	11.9	13.2	13.8	15.6
All placed applicants per 10,000 population	Men	13.0	14.0	13.5	14.1	17.7	18.3
	Women	14.9	14.7	14.9	16.0	19.7	19.7

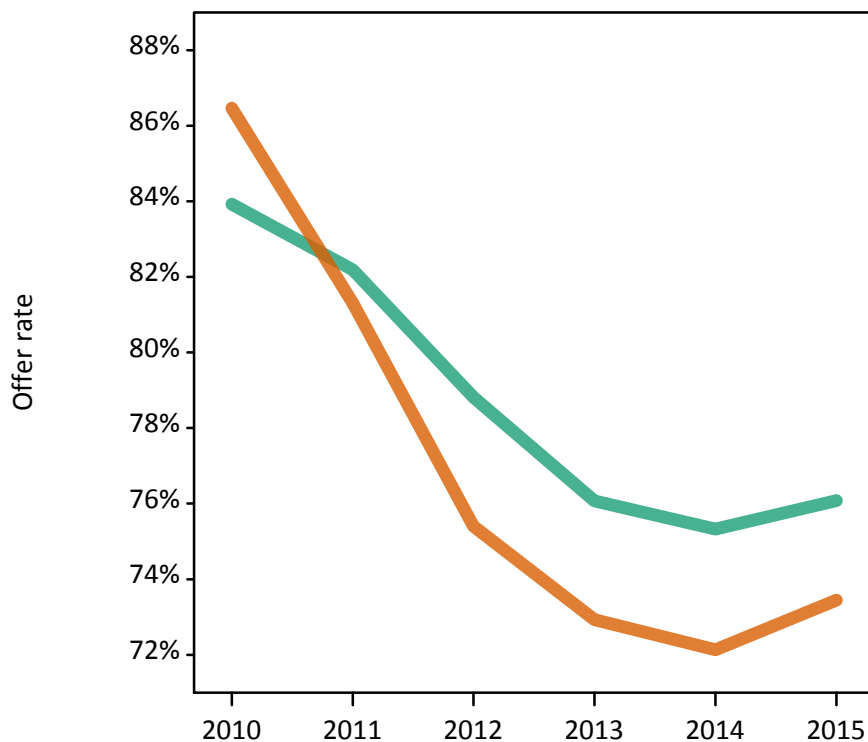
P.4 18 year old applications by sex

Statistic	Sex	2010	2011	2012	2013	2014	2015
June deadline applications	Men	3,085	3,330	3,495	3,390	2,810	3,705
	Women	3,200	3,260	3,950	3,980	3,260	3,905
Offers	Men	2,590	2,735	2,755	2,580	2,115	2,820
	Women	2,765	2,650	2,980	2,900	2,355	2,870
Offer rate	Men	83.9%	82.2%	78.8%	76.1%	75.3%	76.1%
	Women	86.5%	81.3%	75.4%	72.9%	72.1%	73.4%
Average offer rate	Men	84.0%	81.8%	79.1%	76.2%	75.0%	75.9%
	Women	86.4%	81.7%	75.2%	72.8%	72.4%	73.6%
Percentage point difference between offer rate and average offer rate	Men	-0.1	0.4	-0.3	-0.2	0.3	0.2
	Women	0.1	-0.4	0.2	0.1	-0.3	-0.2
Contribution of group to the average offer rate	Men	0.621	0.626	0.610	0.610	0.611	0.634
	Women	0.635	0.618	0.655	0.668	0.665	0.653

P.5 18 year old offer rate by sex

Note: The line for a group is not plotted when that group made fewer than 10 applications in any of the years from 2010-2015.

Men
Women



P.6 Percentage point difference between 18 year old offer rate and average offer rate by sex

Note: The line for a group is not plotted when that group made fewer than 50 applications in any of the years from 2010-2015.

Men
Women



P.7 18 year old applicants by POLAR3 quintile

Statistic	POLAR3 quintile	2010	2011	2012	2013	2014	2015
June deadline applicants	Quintile 1	645	700	780	785	680	895
	Quintile 2	960	985	1,190	1,190	1,015	1,205
	Quintile 3	1,305	1,365	1,525	1,630	1,355	1,795
	Quintile 4	1,510	1,510	1,735	1,710	1,385	1,760
	Quintile 5	1,565	1,740	1,910	1,770	1,405	1,695
Placed June deadline applicants	Quintile 1	110	90	95	105	120	130
	Quintile 2	160	155	155	160	145	180
	Quintile 3	210	190	190	220	235	300
	Quintile 4	240	245	215	225	235	290
	Quintile 5	210	240	220	210	215	250
All placed applicants	Quintile 1	125	100	110	120	160	160
	Quintile 2	185	180	185	190	200	220
	Quintile 3	240	220	250	270	360	375
	Quintile 4	285	290	270	290	345	375
	Quintile 5	260	310	280	270	340	320
June deadline applicants per 10,000 population	Quintile 1	43.6	48.6	54.7	56.3	48.9	64.0
	Quintile 2	62.4	65.5	79.4	80.8	69.2	81.1
	Quintile 3	82.1	88.7	98.6	107.0	90.0	117.0
	Quintile 4	94.8	96.3	109.2	109.3	89.7	112.6
	Quintile 5	92.2	105.2	113.6	107.0	86.1	101.2
Placed June deadline applicants per 10,000 population	Quintile 1	7.6	6.1	6.5	7.5	8.5	9.3
	Quintile 2	10.5	10.3	10.3	10.9	9.8	12.0
	Quintile 3	13.1	12.3	12.2	14.4	15.5	19.4
	Quintile 4	15.2	15.6	13.4	14.4	15.4	18.5
	Quintile 5	12.3	14.4	13.2	12.7	13.3	14.8
All placed applicants per 10,000 population	Quintile 1	8.5	7.0	7.7	8.6	11.4	11.3
	Quintile 2	12.0	12.0	12.5	12.8	13.7	14.9
	Quintile 3	15.0	14.2	16.1	17.8	23.9	24.5
	Quintile 4	18.0	18.5	16.9	18.7	22.4	24.1
	Quintile 5	15.3	18.7	16.7	16.2	20.8	19.1

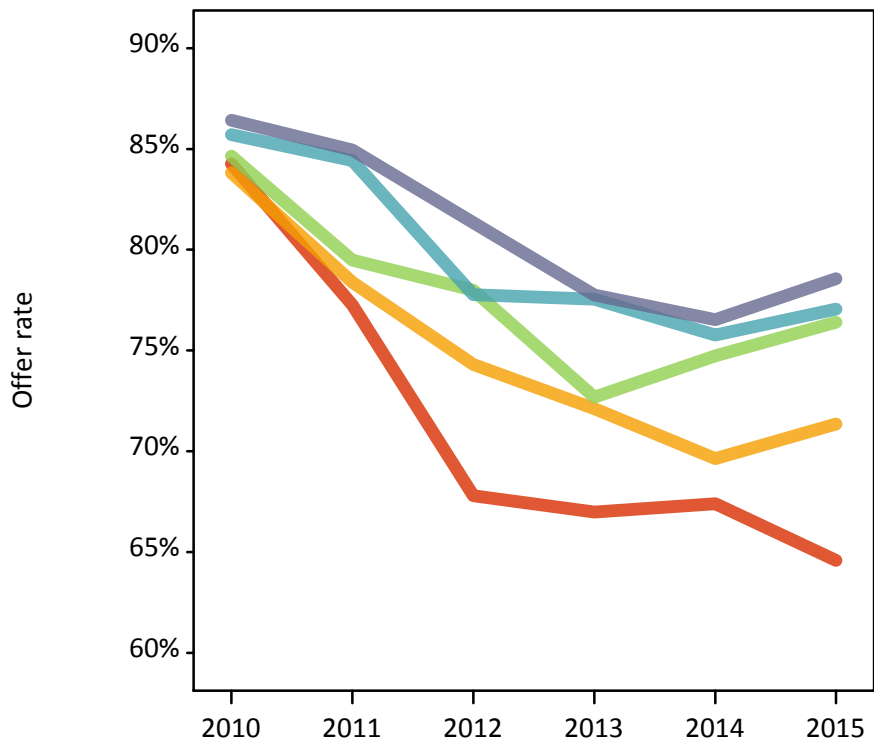
P.8 18 year old applications by POLAR3 quintile

Statistic	POLAR3 quintile	2010	2011	2012	2013	2014	2015
June deadline applications	Quintile 1	695	740	830	825	725	945
	Quintile 2	1,025	1,040	1,270	1,245	1,065	1,255
	Quintile 3	1,355	1,415	1,570	1,685	1,400	1,855
	Quintile 4	1,590	1,585	1,805	1,780	1,425	1,815
	Quintile 5	1,605	1,790	1,955	1,820	1,445	1,730
Offers	Quintile 1	585	570	560	550	490	610
	Quintile 2	860	815	945	895	745	895
	Quintile 3	1,145	1,125	1,225	1,225	1,045	1,420
	Quintile 4	1,360	1,340	1,405	1,380	1,080	1,400
	Quintile 5	1,390	1,520	1,590	1,415	1,105	1,360
Offer rate	Quintile 1	84.3%	77.3%	67.8%	67.0%	67.4%	64.6%
	Quintile 2	83.8%	78.4%	74.3%	72.1%	69.6%	71.3%
	Quintile 3	84.6%	79.5%	78.0%	72.7%	74.7%	76.4%
	Quintile 4	85.7%	84.4%	77.8%	77.6%	75.8%	77.1%
	Quintile 5	86.4%	85.0%	81.3%	77.7%	76.5%	78.6%
Average offer rate	Quintile 1	83.5%	78.1%	71.3%	67.8%	70.1%	67.6%
	Quintile 2	83.5%	79.1%	74.4%	72.2%	71.9%	72.5%
	Quintile 3	85.2%	79.5%	77.2%	73.9%	73.9%	75.1%
	Quintile 4	85.2%	83.8%	77.6%	77.0%	74.8%	76.8%
	Quintile 5	87.0%	84.7%	80.6%	76.6%	75.3%	77.8%
Percentage point difference between offer rate and average offer rate	Quintile 1	0.7	-0.9	-3.5	-0.8	-2.6	-3.0
	Quintile 2	0.3	-0.7	-0.1	-0.1	-2.2	-1.1
	Quintile 3	-0.6	-0.0	0.8	-1.3	0.8	1.3
	Quintile 4	0.6	0.6	0.2	0.5	0.9	0.3
	Quintile 5	-0.6	0.2	0.7	1.1	1.3	0.8
Contribution of group to the average offer rate	Quintile 1	0.234	0.227	0.217	0.216	0.226	0.219
	Quintile 2	0.269	0.258	0.261	0.246	0.270	0.242
	Quintile 3	0.301	0.299	0.292	0.300	0.311	0.314
	Quintile 4	0.333	0.325	0.314	0.312	0.318	0.309
	Quintile 5	0.351	0.370	0.346	0.334	0.327	0.314

P.9 18 year old offer rate by POLAR3 quintile

Note: The line for a group is not plotted when that group made fewer than 10 applications in any of the years from 2010-2015.

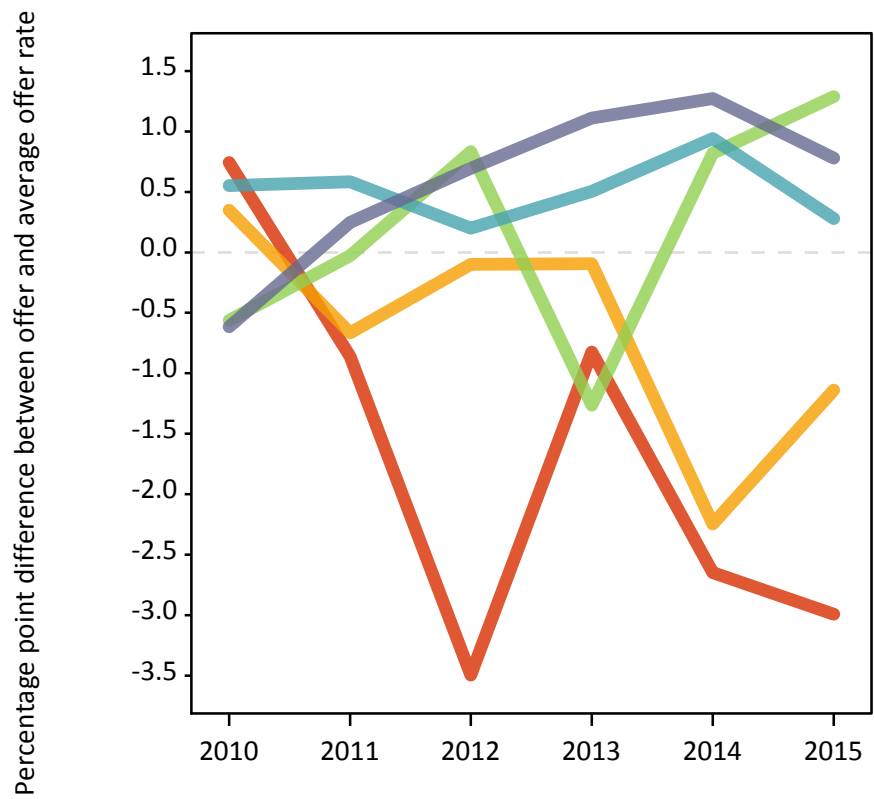
- Quintile 1
- Quintile 2
- Quintile 3
- Quintile 4
- Quintile 5



P.10 Percentage point difference between 18 year old offer rate and average offer rate by POLAR3 quintile

Note: The line for a group is not plotted when that group made fewer than 50 applications in any of the years from 2010-2015.

- Quintile 1
- Quintile 2
- Quintile 3
- Quintile 4
- Quintile 5



P.11 18 year old applicants by ethnic group

Statistic	Ethnic group	2010	2011	2012	2013	2014	2015
June deadline applicants	Asian	475	510	575	595	465	635
	Black	625	620	700	840	765	1,155
	Mixed	255	295	370	390	315	455
	White	4,525	4,735	5,360	5,130	4,180	4,930
	Other	75	115	105	110	105	150
Placed June deadline applicants	Asian	55	60	55	60	55	80
	Black	105	80	95	125	150	200
	Mixed	45	35	55	70	45	80
	White	705	730	645	645	680	755
	Other	15	10	15	15	15	25
All placed applicants	Asian	85	80	75	90	130	130
	Black	125	105	150	180	305	290
	Mixed	50	45	70	80	70	95
	White	810	855	765	765	875	905
	Other	15	15	15	20	25	30
June deadline applicants per 10,000 population	Asian	76.7	80.8	88.5	90.2	68.3	89.7
	Black	238.4	226.0	248.9	282.6	252.4	362.3
	Mixed	110.1	122.6	142.8	144.6	108.8	147.6
	White	67.4	73.2	83.0	81.5	67.7	79.1
	Other	98.7	139.5	118.7	122.4	111.7	154.7
Placed June deadline applicants per 10,000 population	Asian	9.2	9.2	8.8	9.2	8.4	11.6
	Black	39.3	30.0	33.0	41.4	49.8	62.9
	Mixed	19.4	13.6	21.5	25.5	16.0	25.9
	White	10.5	11.3	10.0	10.3	11.0	12.1
	Other	19.5	13.6	15.8	16.5	16.1	24.9
All placed applicants per 10,000 population	Asian	13.6	12.5	11.9	13.5	19.0	18.4
	Black	47.8	37.7	54.0	60.6	100.0	91.1
	Mixed	21.1	19.4	26.9	29.2	24.7	30.5
	White	12.1	13.2	11.8	12.2	14.2	14.5
	Other	22.1	16.0	19.2	21.0	25.8	32.2

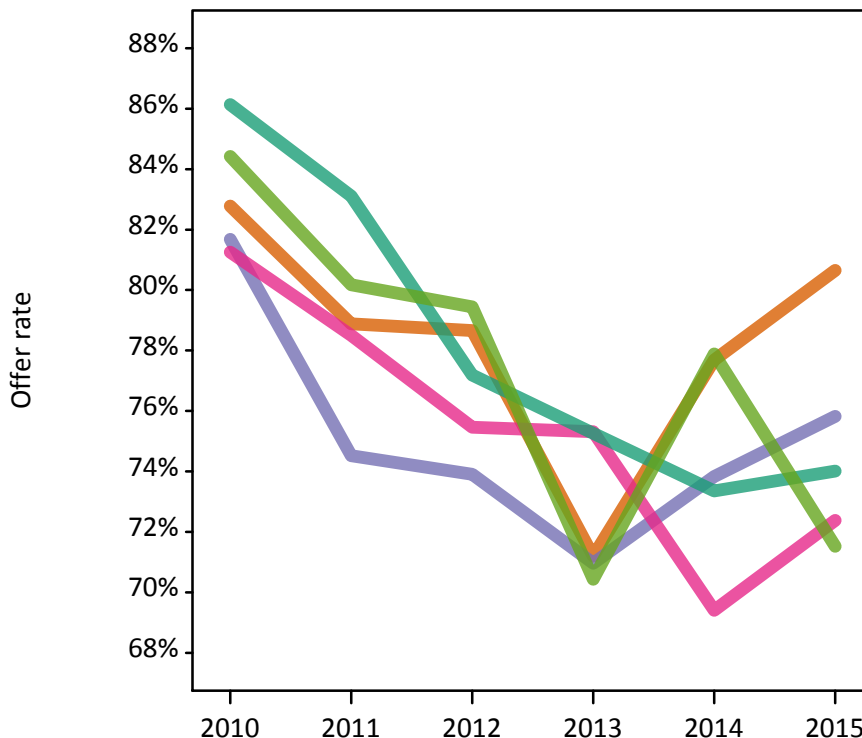
P.12 18 year old applications by ethnic group

Statistic	Ethnic group	2010	2011	2012	2013	2014	2015
June deadline applications	Asian	480	520	580	605	475	650
	Black	635	630	710	855	770	1,160
	Mixed	270	305	385	400	315	465
	White	4,775	4,970	5,625	5,360	4,385	5,135
	Other	75	115	105	115	105	150
Offers	Asian	400	410	455	430	370	525
	Black	515	470	525	605	570	880
	Mixed	220	240	290	300	220	340
	White	4,110	4,130	4,340	4,035	3,215	3,800
	Other	65	95	85	80	80	110
Offer rate	Asian	82.8%	78.9%	78.7%	71.2%	77.7%	80.6%
	Black	81.7%	74.5%	73.9%	71.0%	73.8%	75.8%
	Mixed	81.3%	78.5%	75.5%	75.3%	69.4%	72.4%
	White	86.1%	83.1%	77.2%	75.3%	73.4%	74.0%
	Other	84.4%	80.2%	79.4%	70.4%	77.9%	71.5%
Average offer rate	Asian	83.8%	78.8%	80.8%	74.4%	79.2%	81.7%
	Black	81.8%	75.9%	74.1%	71.7%	74.3%	74.7%
	Mixed	84.5%	80.3%	76.1%	74.2%	69.8%	71.5%
	White	85.8%	82.8%	77.0%	74.8%	73.1%	74.0%
	Other	85.8%	83.4%	76.3%	72.3%	77.5%	76.8%
Percentage point difference between offer rate and average offer rate	Asian	-1.0	0.1	-2.2	-3.2	-1.5	-1.1
	Black	-0.1	-1.4	-0.2	-0.7	-0.5	1.1
	Mixed	-3.3	-1.8	-0.6	1.1	-0.4	0.8
	White	0.3	0.3	0.2	0.4	0.3	-0.0
	Other	-1.3	-3.3	3.2	-1.9	0.4	-5.3
Contribution of group to the average offer rate	Asian	0.233	0.251	0.233	0.227	0.220	0.200
	Black	0.252	0.233	0.225	0.243	0.242	0.263
	Mixed	0.142	0.153	0.146	0.160	0.142	0.147
	White	0.806	0.799	0.797	0.779	0.771	0.728
	Other	0.129	0.181	0.115	0.150	0.147	0.115

P.13 18 year old offer rate by ethnic group

Note: The line for a group is not plotted when that group made fewer than 10 applications in any of the years from 2010-2015.

- Asian
- Black
- Mixed
- White
- Other



P.14 Percentage point difference between 18 year old offer rate and average offer rate by ethnic group

Note: The line for a group is not plotted when that group made fewer than 50 applications in any of the years from 2010-2015.

- Asian
- Black
- Mixed
- White
- Other



P.15 Applicants (all ages)

Statistic	2010	2011	2012	2013	2014	2015
June deadline applicants	10,385	11,350	11,915	12,285	10,835	13,075
Placed June deadline applicants	1,555	1,525	1,360	1,510	1,620	1,910
All placed applicants	1,935	1,925	1,835	1,995	2,510	2,695

P.16 Applications (all ages)

Statistic	2010	2011	2012	2013	2014	2015
June deadline applications	11,095	12,065	12,555	12,875	11,430	13,645
Offers	8,415	8,415	7,935	7,850	6,835	8,455
Offer rate	75.9%	69.8%	63.2%	61.0%	59.8%	62.0%

P.17 Applicants (all ages) by sex

Statistic	Sex	2010	2011	2012	2013	2014	2015
June deadline applicants	Men	5,125	5,690	5,595	5,625	4,950	6,190
	Women	5,260	5,660	6,315	6,655	5,885	6,885
Placed June deadline applicants	Men	750	765	645	660	760	925
	Women	805	765	715	850	860	985
All placed applicants	Men	895	925	870	890	1,190	1,265
	Women	1,040	995	965	1,105	1,320	1,435

P.18 Applications (all ages) by sex

Statistic	Sex	2010	2011	2012	2013	2014	2015
June deadline applications	Men	5,495	6,025	5,900	5,900	5,250	6,490
	Women	5,595	6,040	6,650	6,975	6,180	7,155
Offers	Men	4,145	4,265	3,900	3,740	3,335	4,230
	Women	4,275	4,155	4,035	4,110	3,505	4,220
Offer rate	Men	75.4%	70.8%	66.0%	63.4%	63.5%	65.2%
	Women	76.3%	68.8%	60.7%	58.9%	56.7%	59.0%

P.19 Applicants (all ages) by POLAR3 quintile

Statistic	POLAR3 quintile	2010	2011	2012	2013	2014	2015
June deadline applicants	Quintile 1	1,260	1,450	1,465	1,525	1,480	1,775
	Quintile 2	1,685	1,920	1,975	2,100	1,925	2,225
	Quintile 3	2,280	2,490	2,605	2,785	2,500	3,065
	Quintile 4	2,525	2,625	2,850	2,910	2,460	3,080
	Quintile 5	2,595	2,835	2,985	2,925	2,460	2,900
Placed June deadline applicants	Quintile 1	210	190	175	185	235	245
	Quintile 2	275	275	240	255	245	320
	Quintile 3	330	325	290	355	380	470
	Quintile 4	375	385	335	370	395	470
	Quintile 5	360	350	325	340	355	405
All placed applicants	Quintile 1	245	230	235	250	335	375
	Quintile 2	340	345	310	335	380	450
	Quintile 3	410	400	400	465	610	650
	Quintile 4	470	465	455	480	600	650
	Quintile 5	455	475	430	455	575	560

P.20 Applications (all ages) by POLAR3 quintile

Statistic	POLAR3 quintile	2010	2011	2012	2013	2014	2015
June deadline applications	Quintile 1	1,400	1,590	1,605	1,615	1,640	1,895
	Quintile 2	1,840	2,065	2,120	2,215	2,065	2,345
	Quintile 3	2,395	2,640	2,715	2,895	2,600	3,205
	Quintile 4	2,705	2,790	3,005	3,055	2,550	3,180
	Quintile 5	2,715	2,945	3,080	3,050	2,560	2,985
Offers	Quintile 1	1,010	1,000	835	835	860	1,000
	Quintile 2	1,360	1,330	1,285	1,270	1,155	1,360
	Quintile 3	1,800	1,775	1,695	1,730	1,575	2,030
	Quintile 4	2,055	2,060	1,960	1,980	1,625	2,050
	Quintile 5	2,160	2,230	2,140	2,015	1,620	2,000
Offer rate	Quintile 1	72.3%	62.8%	52.2%	51.7%	52.3%	52.7%
	Quintile 2	74.0%	64.5%	60.7%	57.4%	55.9%	58.0%
	Quintile 3	75.0%	67.2%	62.4%	59.7%	60.5%	63.4%
	Quintile 4	75.9%	73.7%	65.3%	64.8%	63.7%	64.4%
	Quintile 5	79.7%	75.7%	69.5%	66.0%	63.2%	66.9%

P.21 Applicants (all ages) by ethnic group

Statistic	Ethnic group	2010	2011	2012	2013	2014	2015
June deadline applicants	Asian	875	960	1,050	1,110	935	1,225
	Black	1,395	1,590	1,675	1,890	1,835	2,440
	Mixed	480	570	625	680	595	820
	White	7,405	7,945	8,270	8,315	7,215	8,220
	Other	140	190	215	200	195	275
Placed June deadline applicants	Asian	95	95	85	105	110	150
	Black	170	150	155	210	270	310
	Mixed	80	60	95	100	75	130
	White	1,185	1,190	990	1,050	1,135	1,260
	Other	20	15	25	20	30	40
All placed applicants	Asian	145	140	125	165	250	260
	Black	230	195	245	305	535	480
	Mixed	90	75	115	120	120	165
	White	1,345	1,390	1,200	1,295	1,480	1,610
	Other	25	20	45	25	50	55

P.22 Applications (all ages) by ethnic group

Statistic	Ethnic group	2010	2011	2012	2013	2014	2015
June deadline applications	Asian	900	990	1,075	1,140	965	1,265
	Black	1,440	1,630	1,710	1,930	1,885	2,485
	Mixed	530	605	655	705	615	855
	White	7,985	8,540	8,815	8,800	7,700	8,655
	Other	150	195	215	205	200	285
Offers	Asian	645	645	670	705	630	845
	Black	885	815	805	965	985	1,385
	Mixed	400	420	425	430	355	515
	White	6,310	6,320	5,835	5,570	4,705	5,470
	Other	100	135	140	125	130	170
Offer rate	Asian	71.7%	65.2%	62.6%	61.9%	65.0%	67.0%
	Black	61.6%	50.1%	47.1%	49.9%	52.1%	55.6%
	Mixed	76.1%	69.4%	64.8%	61.1%	57.9%	60.5%
	White	79.0%	74.0%	66.2%	63.3%	61.1%	63.2%
	Other	68.2%	69.9%	65.3%	59.4%	65.3%	60.8%

Technical Notes and Definitions

UCAS undergraduate scheme

Adjustment

Adjustment allows applicants who have met and exceeded the terms of their conditional firm offer to seek and find a place at another provider whilst keeping their place at their original firm choice provider.

Clearing

Clearing is a route for applicants that are not placed and holding no offers to find a place on courses with vacancies.

Cycle year

The UCAS application cycle which runs from September to October the following year. For example the 2015 cycle runs from September 2014 through to October 2015.

End of cycle

The point in the cycle to which the numbers in this report refer, and the point at which the cycle is closed such that no more applications or offers can be made, and no more applicants can be placed. Numbers reported at the end of cycle exclude information on a small number of applicants who cancelled during the cycle.

Extra

Applicants who are unsuccessful in obtaining an offer or decline all offers may be eligible to apply through Extra, where they can apply to one further course at a time. Extra operates from 25 February until early July. It provides applicants who are eligible the possibility of obtaining an offer before exam results are published and Clearing starts.

June 30 deadline

The deadline for main scheme applications. Applicants who apply after this date will go directly into Clearing.

Record of Prior Acceptance (RPA)

RPA is an acceptance route used when a provider informs UCAS of applicants it has accepted outside of the normal application process (e.g. individuals who have applied directly to the provider).

Reporting groups

Ethnic group

High level grouping of ethnic origin as declared by the applicant: 'White', 'Black', 'Asian', 'Mixed', 'Other', 'Unknown'. Applicants who declare themselves as 'Unknown' ethnic origin are not reported in these tables, but are included in the associated csv data file.

POLAR3 quintile

Developed by HEFCE, POLAR3 classifies small areas across the UK into five groups according to their level of young participation in Higher Education. Each of these groups represents around 20 per cent of young people and is ranked from Quintile 1 (areas with the lowest young participation rates, considered as the most disadvantaged) to Quintile 5 (highest young participation rates, considered most advantaged). POLAR3 is based on the participation rates of young people between 2005 and 2009 who entered Higher Education between 2005-06 and 2010-11, therefore is most suitable for applicants aged 19 and under. These groups are assigned using the postcode declared by the applicant at the time of their application. If a UK postcode is invalid, considered unsafe for measurement or there is no link to Census geography possible then the applicant is not assigned to a quintile. Applicants with no POLAR3 quintile are not reported.

Sex

Sex as declared by the applicant.

SIMD quintile

Scottish index of multiple deprivation (SIMD) for 2012 identifies small area concentrations of multiple deprivation across all of Scotland, providing a relative measure of deprivation amongst 6505 small areas (data zones) based on 7 socio-economic domains. These small areas are classified into five groups ranked from Quintile 1 (considered the most deprived) to Quintile 5 (considered least deprived), with equal populations in each quintile. Quintiles are assigned using the postcode declared by the applicant, applicants declaring invalid postcodes are classified as 'Not assigned' and are not reported.

SIMD is only defined for applicants domiciled in Scotland, therefore any applicants domiciled outside of Scotland cannot be assigned to an SIMD quintile and so are not reported for this measure.

SIMD is only reported for providers in Scotland. Application and entry rates by SIMD are reported in the 2015 End of Cycle Report and the 2016 cycle January deadline application rate report.

Statistics reported in the tables

All placed applicants

The number of applicants placed for entry into higher education at the provider through one of their choices, including any choices made through Extra, or via Adjustment, Clearing or RPA.

All placed applicants per 10,000 population

The number of total UK domiciled 18 year old placed applicants for entry into higher education at the provider divided by the number of UK 18 year olds in the population, multiplied by 10,000. This gives the number of 18 year olds, for every 10,000 in the population, that were placed at the provider through one of their choices, including any choices made through Extra, or via Adjustment, Clearing or RPA. It is an alternative way of expressing the entry rate to a provider. By referencing the underlying population this statistic shows how the number of placed applicants is changing in relation to the available pool of potential applicants and so gives the chance that somebody from the group will be placed at a provider.

This statistic is only reported for 18 year olds.

Average offer rate

The offer rate that you might expect if the predicted grades and subject choice of applicants were the only factors that influenced whether an applicant was made an offer by the provider. The average offer rate is calculated by dividing applicants according to their specific combination of grades (for A levels the best three predicted grades are used, for BTECs, International Baccalaureate and Scottish Highers and Advanced Highers, predicted grades along with any grades already achieved upon applying are used) and subject choice. For each combination the number of main scheme offers is divided by the number of main scheme applications, to give an overall offer rate. This is then multiplied by the number of applications made by the group for which the average offer rate is being calculated (for example POLAR3 quintile 1), to give an average number of offers for that group. These average number of offers are then added together across all combinations of predicted grade and subject and divided by the number of main scheme applications from the group to give the average offer rate.

The average offer rate does not attempt to control for any other factors that may play a part in the decision to make an offer, such as the subject of the qualifications studied, their relevance to a course, or the grade in each subject; higher numbers of A levels being studied; the exact profile of grades predicted; personal statements; teacher references; interviews; or any other criteria (such as work experience or portfolios) that may be part of the admissions decision.

This statistic is only reported for 18 year olds.

Contribution of group to the average offer rate

The way in which the average offer rate is defined means that the pattern of application and offers of a group (for example POLAR3 quintile 1) will always contribute, in part, to the average offer rate for that group. When this contribution is large, the average offer rate will mainly reflect the patterns for the group, meaning that the value of the average offer rate will be similar to the offer rate, the percentage point difference statistic will be small, and any real difference between the offer rate and what might be expected given the predicted grades and subject choices of the applicants will be difficult to detect.

Values of the contribution of group to the average offer rate range between 0 and 1. The closer the value is to 1 the greater the contribution a group makes to its own average offer rate.

This statistic is only reported for 18 year olds.

Placed June deadline applicants

An applicant who has been placed for entry into higher education at the provider through a June deadline application.

Placed June deadline applicants per 10,000 population

The number of UK domiciled 18 year old placed June deadline applicants at the provider divided by the number of UK 18 year olds in the population, multiplied by 10,000. This gives the number of 18 year olds, for every 10,000 in the population, that were placed at the provider through one of their June deadline applications. It is an alternative way of expressing the entry rate to a provider, but for placed June deadline applicants only. By referencing the underlying population this statistic shows how the number of placed June deadline applicants is changing in relation to the available pool of potential 18 year old applicants and so gives the chance that somebody from the group will be placed at a provider through a June deadline application.

This statistic is only reported for 18 year olds.

June deadline applications

An application (or choice) to a course in higher education to the provider that is made by the June 30 deadline. Each applicant can make up to five choices this way. The number of June deadline applications does not include choices made through the following routes: Clearing, Extra, Adjustment and RPAs. Applications made to October deadline courses received after the October deadline are not included in these statistics.

June deadline applicants

The number of applicants that made at least one application to the provider by the June 30 deadline.

June deadline applicants per 10,000 population

The number of UK domiciled 18 year old June deadline applicants to the provider divided by the number of UK 18 year olds in the population, multiplied by 10,000. This gives the number of 18 year olds, for every 10,000 in the population, who applied by the June 30 deadline. It is equivalent to the application rate. By referencing the underlying population this statistic shows how the number of June deadline applicants is changing in relation to the available pool of potential 18 year old applicants and so gives the chance that somebody from the group will apply to a provider by the June 30 deadline.

This statistic is only reported for 18 year olds.

Offers

An offer is defined as a provider's decision in response to an application to offer a place to an applicant, often subject to the applicant satisfying academic and/or other criteria, via a June deadline application (i.e. does not cover choices made through the following routes: Clearing, Extra, Adjustment and RPAs).

Offer rate

The number of offers made divided by the number of June deadline applications. This gives the proportion of all June deadline applications to the provider that received an offer.

Percentage point difference between offer rate and average offer rate

The offer rate minus the average offer rate.

The percentage point difference can be compared to the expected range of statistical variation resulting from the calculation of the average offer rate using the Average Offer Rate Lookup Table. Where the value of the percentage point difference lies outside of this range, the percentage point difference may be considered to represent a real difference between the offer rate and the average offer rate.

Other definitions

Age

This analysis uses country-specific age definitions that align with the cut off points for school and college cohorts within the different administrations of the UK. For England and Wales, ages are defined on the 31 August, for Northern Ireland on the 1 July and for Scotland on the 28 February the following year. Defining ages in this way matches the assignment of children to school cohorts. For applicants outside of the UK a cohort cut off of 31 August has been used.

Provider

A higher education provider - a university or college.

UK domiciled

Declared area of permanent residence within England, Northern Ireland, Scotland and Wales. Applicants from the Channel Islands and Isle of Man are not included.